



2021

Michigan Traffic Crash Facts

MTCF
Michigan Traffic
Crash Facts

Reporting Criteria

Please pay particular attention to the wording when interpreting the three levels of data gathered for this report.

Crash

The Crash Level analyzes data related to crash events and returns one result per crash.

Examples: Time, weather, and location.

Units

The Units Level analyzes the experience of the units in the crash and returns one result per vehicle, driver, pedestrian, bicyclist, or train.

Examples: Vehicle type, driver condition, and unit events.

People

The People Level analyzes the experience of the people involved in the crash and returns one result per occupant/person/party.

Examples: Age, injury severity, and seat belt or helmet use.

KABCO Injury Indicator:

K = Killed

A = Suspected Serious Injury

B = Suspected Minor Injury

C = Possible Injury

O = No Injury

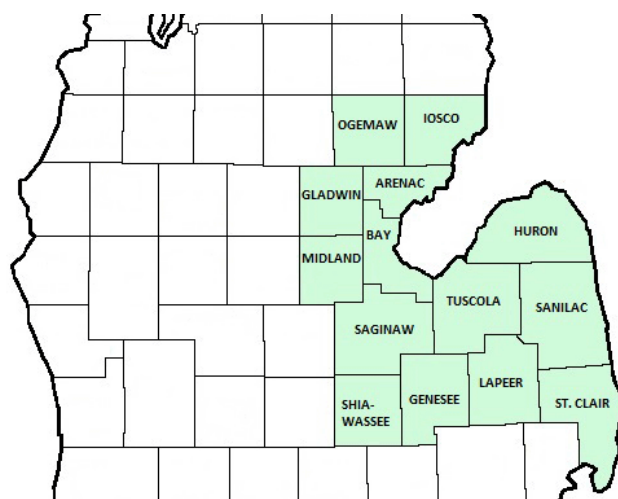
Property Damage Only (PDO)



Michigan State Police (MSP) District 3 - Thumb & Tri-Cities

2021 Traffic Crash Data & 2017-2021 5-Year Trends

Beginning in 2011, District 3 is comprised of Arenac, Bay, Genesee, Gladwin, Huron, Iosco, Lapeer, Midland, Ogemaw, Saginaw, St. Clair, Sanilac, Shiawassee and Tuscola counties. Trend tables for this report are based on those counties.



Sources:

The crashes in this report occurred on public roadways in Michigan and resulted in injuries, fatalities, or property damage (with \$1,000 as a reporting threshold). The information was gathered from Michigan Traffic Crash Report Forms (UD-10) submitted by local police departments, sheriff's offices, and the Michigan State Police. Other related information was obtained from the departments of Transportation, State, and Community Health.

MSP District 3 - Thumb & Tri-Cities

- There were 37,374 crashes in District 3 during 2021. [Page 1]
- A total of 186 fatalities resulted from 178 fatal crashes in 2021 in District 3. [Page 1]
- There were 8,864 injuries and 6,359 injury crashes. [Page 1]
- There were 30,837 property damage only crashes (no fatalities or injuries). [Page 1]
- November had the highest number of crashes (4,341). [Pages 1-2]
- July had the highest number of fatal crashes (26) and fatalities (28). [Pages 1-2]
- September had the highest number of injury crashes (633) while June had the highest number of injuries (906). [Page 1]
- November had the highest number of property damage only crashes (3,791). [Page 1]
- Of all vehicles involved in fatal crashes, 34 (12.1%) were motorcycles. [Page 1]
- Friday was the day of the week with the highest number of crashes (5,987) and Sunday had the highest number of fatal crashes (36). [Pages 2-3]
- The 3:00 PM – 5:59 PM time period had the highest number of crashes (7,181). This holds true for every year between 2017 and 2021. The 6:00 PM – 8:59 PM time period had the highest number of fatal crashes (38). [Pages 5-6]
- During the period from 2017 to 2021, the highest number of deer crashes occurred in 2019 (12,405). The 6:00 PM – 8:59 PM time period consistently had the highest number of deer-involved crashes during the five-year period. There was one fatal crash involving deer in 2021. [Page 7]
- Genesee County (28.4%) had the highest number of crashes in District 3 in 2021, followed by Saginaw County (14.5%), and St. Clair County (9.7%). [Page 11]
- Genesee County (32.3%) had the highest number of fatalities in District 3 in 2021, followed by St. Clair County (10.2%), and Saginaw County (9.7%). [Page 11]
- The highest number of drivers in crashes (59,738) occurred during 2019 and the highest number of drivers coded drinking in crashes (1,376) occurred during 2017 within the five year period between 2017 and 2021. [Page 12]
- A total of 1,355 crashes involved alcohol in 2021. [Page 13]
- Alcohol-involved fatal crashes were the highest in 2021 during the five-year period from 2017 to 2021 at 61. [Page 13]
- A total of 472 crashes, 51 fatal crashes, and 64 suspected injury crashes involved drugs in 2021, all the highest during the five-year period. [Page 14]
- There were 50,167 drivers wearing seatbelts and 646 drivers not wearing seatbelts in crashes in 2021. Of the 646 drivers not wearing seatbelts, 29 (4.5%) were killed and 311 (48.1%) were injured. [Pages 17-19]
- The most common hazardous action coded for drivers in 2021 in all crashes was unable to stop in assured clear distance (5,388), while the most common hazardous action coded for drivers in fatal crashes was unknown (49). [Page 20]

2021 - Crashes and Injury by Month

Month	Crashes				People	
	Total	Fatal	Injury	Property Damage Only (PDO)	Fatalities	Injuries
January	3,044	11	428	2,605	11	600
February	2,883	8	421	2,454	9	539
March	2,328	6	419	1,903	6	593
April	2,266	22	448	1,796	22	625
May	2,738	17	559	2,162	17	760
June	3,048	21	627	2,400	21	906
July	2,897	26	590	2,281	28	856
August	2,669	13	602	2,054	13	848
September	3,137	13	633	2,491	14	892
October	4,072	12	571	3,489	14	756
November	4,341	12	538	3,791	13	787
December	3,951	17	523	3,411	18	702
Total	37,374	178	6,359	30,837	186	8,864

2021 - Driver Statistics

Age Group	MSP District 3 - Thumb & Tri-Cities			Driver Rates	
	2019 Population*	Licensed Drivers	Drivers in Crashes	Per 10k Population	Per 10k Licensed
0 - 15	240,902	6,456	108	4.5	167.3
16 - 20	78,151	58,022	6,155	787.6	1,060.8
21 - 24	61,202	56,213	4,933	806.0	877.6
25 - 64	668,189	609,172	34,684	519.1	569.4
65 +	259,899	253,788	6,875	264.5	270.9
Unknown	0	0	3,955	--	--
Total	1,308,343	983,651	56,710	433.4	576.5

*2021 Population of Michigan Counties (by single-year of age) not yet available from U.S. Census Bureau.

2021 - Vehicles in Crashes

Vehicle Type	Motor Vehicles		Fatal Crashes		Injury Crashes	PDO Crashes
	Number of Vehicles	% of Total	Number	% of Total	Number	Number
Passenger Car, SUV, Van	43,186	76.2	159	56.6	8,405	34,622
Motor Home	78	0.1	0	0.0	17	61
Pickup Truck	9,925	17.5	61	21.7	1,663	8,201
Small Truck Under 10,000 lbs. GVWR	229	0.4	0	0.0	31	198
Motorcycle	482	0.8	34	12.1	356	92
Moped/Goped	64	0.1	0	0.0	53	11
Go-Cart/Golf Cart	12	0.0	0	0.0	10	2
Snowmobile	8	0.0	2	0.7	4	2
Off-Road Vehicle (ORV)/All-Terrain Vehicle (ATV)	79	0.1	3	1.1	48	28
Other (non-registered farm equipment, construction equipment, snow plows, etc.)	199	0.4	2	0.7	29	168
Truck/Bus (over 10,000 lbs. GVWR/8+ occupants/hazmat placard)	1,453	2.6	18	6.4	274	1,161
Uncoded & Errors	995	1.8	2	0.7	110	883
Total	56,710	100.0	281	100.0	11,000	45,429

MSP District 3 - Thumb & Tri-Cities (continued)

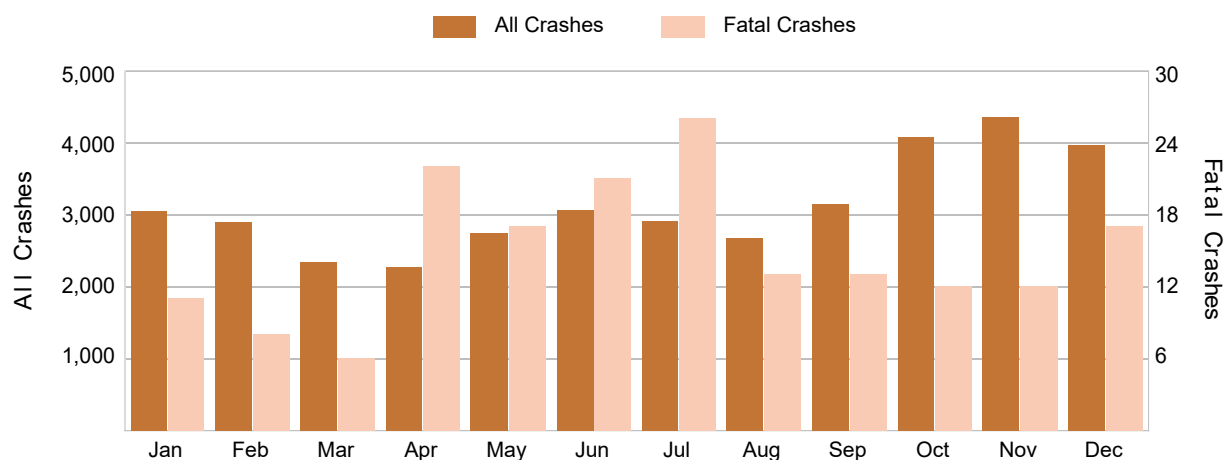
5-Year Trend - Crashes by Month

Month	2017		2018		2019		2020		2021	
	Total Crashes	Fatal Crashes	Total Crashes	Fatal Crashes	Total Crashes	Fatal Crashes	Total Crashes	Fatal Crashes	Total Crashes	Fatal Crashes
January	3,305	12	3,988	8	3,851	11	3,485	9	3,044	11
February	2,308	5	3,228	14	3,244	11	3,491	11	2,883	8
March	3,085	12	3,130	9	2,663	11	1,754	4	2,328	6
April	2,496	8	2,778	14	2,544	7	1,201	6	2,266	22
May	2,831	10	2,673	13	2,891	10	2,057	12	2,738	17
June	3,003	16	2,949	11	3,094	7	2,892	23	3,048	21
July	2,801	20	2,624	9	2,839	16	2,714	18	2,897	26
August	2,612	14	2,587	23	2,802	18	2,596	18	2,669	13
September	2,921	11	2,654	17	2,857	12	2,848	15	3,137	13
October	4,070	13	3,853	15	4,155	11	3,871	13	4,072	12
November	4,019	16	4,588	14	4,966	11	3,745	17	4,341	12
December	5,025	13	3,309	6	3,585	14	2,944	13	3,951	17
Total	38,476	150	38,361	153	39,491	139	33,598	159	37,374	178

5-Year Trend - Crashes by Day of Week

Day	2017		2018		2019		2020		2021	
	Total Crashes	Fatal Crashes	Total Crashes	Fatal Crashes	Total Crashes	Fatal Crashes	Total Crashes	Fatal Crashes	Total Crashes	Fatal Crashes
Monday	5,530	21	5,730	16	5,940	15	4,593	22	5,313	21
Tuesday	5,813	23	5,753	21	5,882	17	4,747	13	5,736	25
Wednesday	5,663	17	5,704	23	6,218	21	5,196	24	5,569	23
Thursday	5,923	22	5,789	23	5,837	28	5,414	19	5,628	26
Friday	6,196	21	6,437	18	6,289	19	5,312	24	5,987	25
Saturday	5,191	21	4,882	23	5,056	20	4,566	25	5,038	22
Sunday	4,160	25	4,066	29	4,269	19	3,770	32	4,103	36
Total	38,476	150	38,361	153	39,491	139	33,598	159	37,374	178

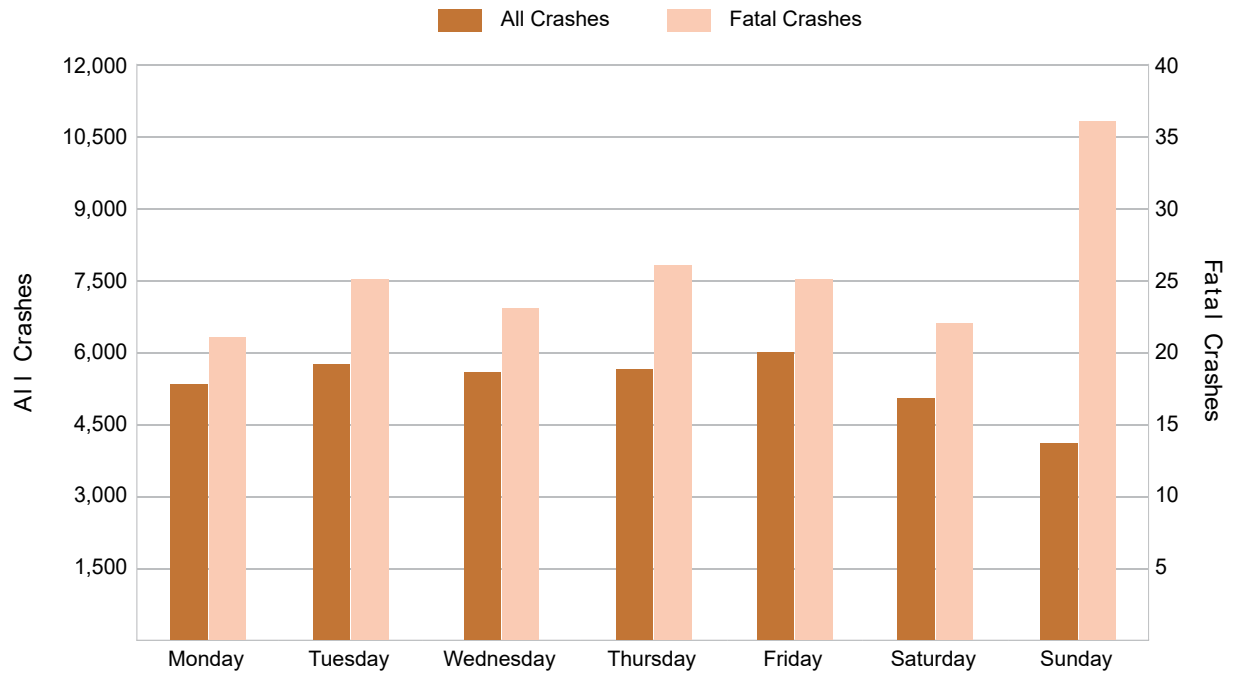
2021 Crashes by Month



2021 - Crashes by Day of Week

Day	All Crashes		Fatal Crashes		Injury Crashes			PDO Crashes
	Number	% of Total	Fatal	% of Fatal	A	B	C	Number
Monday	5,313	14.2	21	11.8	95	289	514	4,394
Tuesday	5,736	15.3	25	14.0	73	267	564	4,807
Wednesday	5,569	14.9	23	12.9	91	277	525	4,653
Thursday	5,628	15.1	26	14.6	102	264	571	4,665
Friday	5,987	16.0	25	14.0	110	313	589	4,950
Saturday	5,038	13.5	22	12.4	138	305	505	4,068
Sunday	4,103	11.0	36	20.2	94	250	423	3,300
Total	37,374	100.0	178	100.0	703	1,965	3,691	30,837

2021 Day of Week and Severity

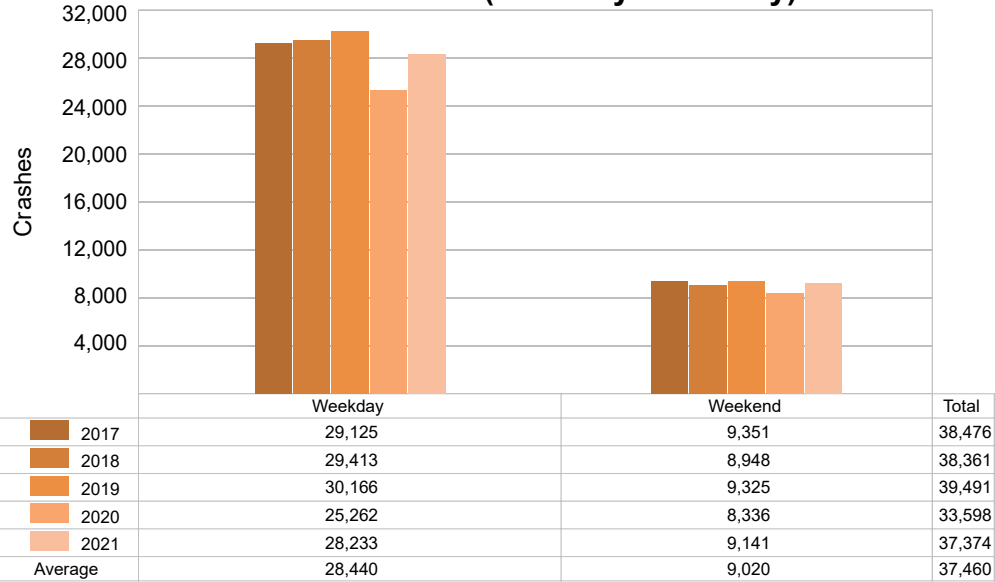


MSP District 3 - Thumb & Tri-Cities (continued)

5-Year Trend - Crashes by Weekday and Weekend

Portion of Week	2017		2018		2019		2020		2021	
	Total Crashes	Fatal Crashes	Total Crashes	Fatal Crashes	Total Crashes	Fatal Crashes	Total Crashes	Fatal Crashes	Total Crashes	Fatal Crashes
Weekday	29,125	104	29,413	101	30,166	100	25,262	102	28,233	120
Weekend	9,351	46	8,948	52	9,325	39	8,336	57	9,141	58
Total	38,476	150	38,361	153	39,491	139	33,598	159	37,374	178

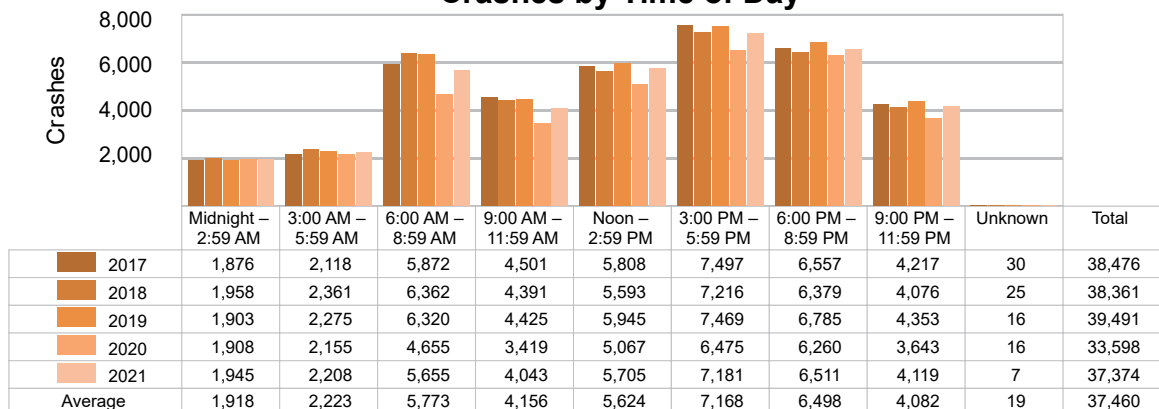
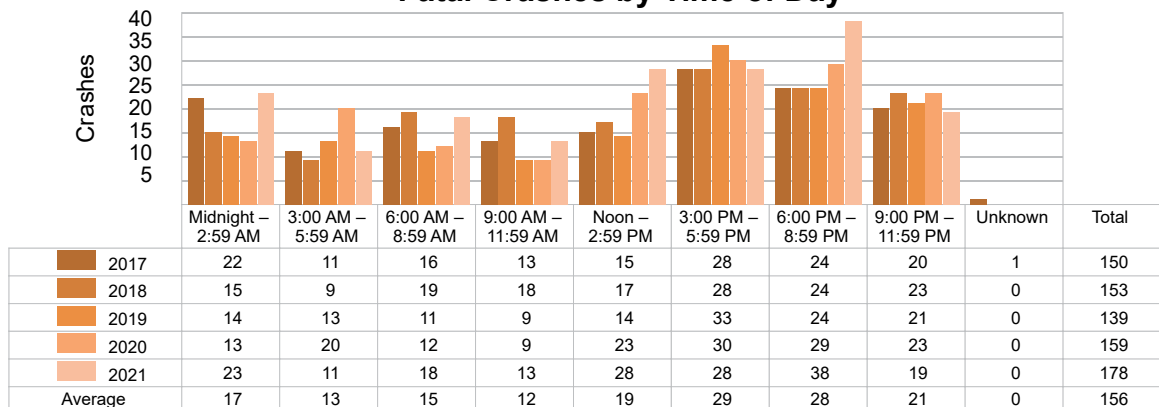
5-Year Crash Trends by Weekday (Monday - Friday) and Weekend (Saturday & Sunday)



5-Year Trend - Crashes by Time of Day

Time of Day	2017		2018		2019		2020		2021	
	Total Crashes	Fatal Crashes	Total Crashes	Fatal Crashes	Total Crashes	Fatal Crashes	Total Crashes	Fatal Crashes	Total Crashes	Fatal Crashes
Midnight – 2:59 AM	1,876	22	1,958	15	1,903	14	1,908	13	1,945	23
3:00 AM – 5:59 AM	2,118	11	2,361	9	2,275	13	2,155	20	2,208	11
6:00 AM – 8:59 AM	5,872	16	6,362	19	6,320	11	4,655	12	5,655	18
9:00 AM – 11:59 AM	4,501	13	4,391	18	4,425	9	3,419	9	4,043	13
Noon – 2:59 PM	5,808	15	5,593	17	5,945	14	5,067	23	5,705	28
3:00 PM – 5:59 PM	7,497 †	28	7,216 †	28	7,469 †	33	6,475 †	30	7,181 †	28
6:00 PM – 8:59 PM	6,557	24	6,379	24	6,785	24	6,260	29	6,511	38
9:00 PM – 11:59 PM	4,217	20	4,076	23	4,353	21	3,643	23	4,119	19
Unknown	30	1	25	0	16	0	16	0	7	0
Total	38,476	150	38,361	153	39,491	139	33,598	159	37,374	178

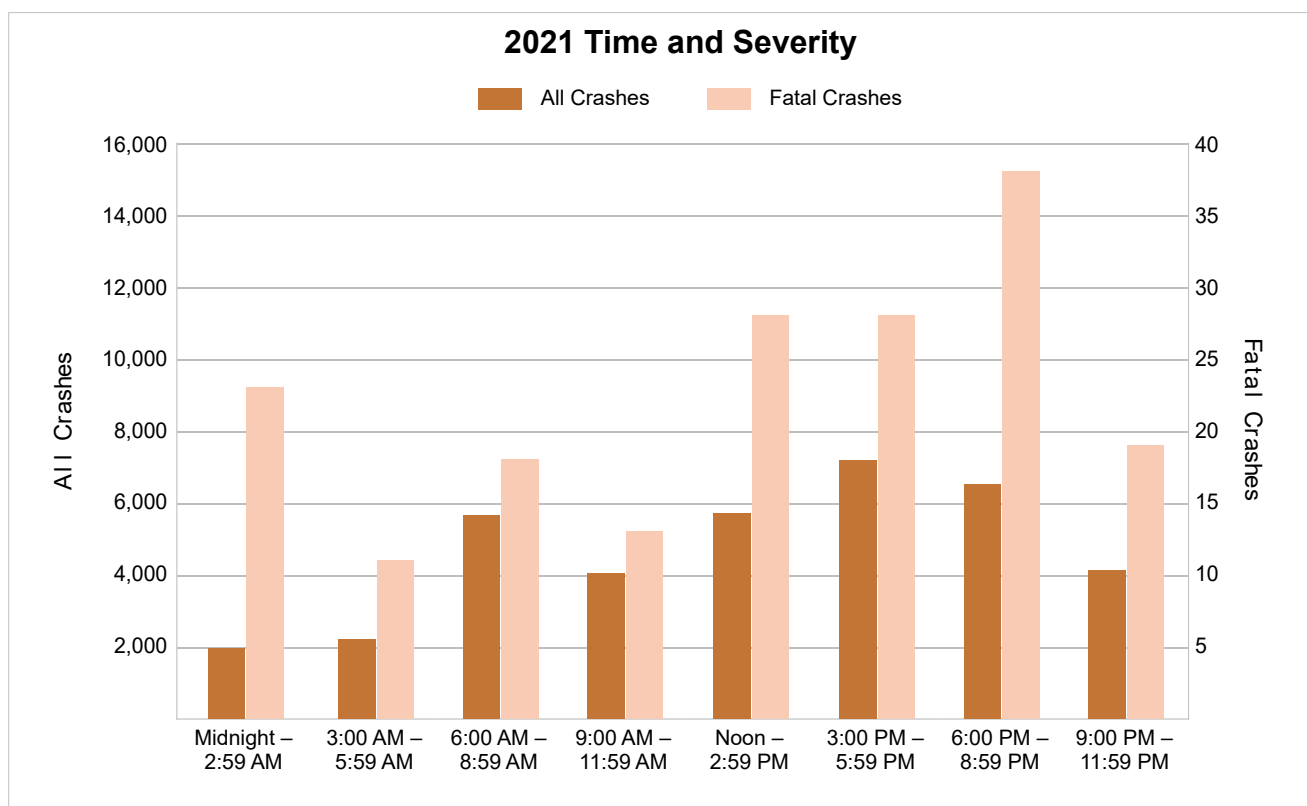
Note: † Indicates that the highest number of total crashes reported in the 5-year period occurred in the same time period.

5-Year Trend
Crashes by Time of Day

5-Year Trend
Fatal Crashes by Time of Day


MSP District 3 - Thumb & Tri-Cities (continued)

2021 - Time and Severity

Time of Day	All Crashes		Fatal Crashes		Injury Crashes			PDO Crashes
	Number	% of Total	Number	% of Fatal	A	B	C	Number
Midnight – 2:59 AM	1,945	5.2	23	12.9	46	126	190	1,560
3:00 AM – 5:59 AM	2,208	5.9	11	6.2	31	96	133	1,937
6:00 AM – 8:59 AM	5,655	15.1	18	10.1	60	176	382	5,019
9:00 AM – 11:59 AM	4,043	10.8	13	7.3	70	244	468	3,248
Noon – 2:59 PM	5,705	15.3	28	15.7	100	362	777	4,438
3:00 PM – 5:59 PM	7,181	19.2	28	15.7	153	479	887	5,634
6:00 PM – 8:59 PM	6,511	17.4	38	21.3	147	291	541	5,494
9:00 PM – 11:59 PM	4,119	11.0	19	10.7	96	190	313	3,501
Unknown	7	0.0	0	0.0	0	1	0	6
Total	37,374	100.0	178	100.0	703	1,965	3,691	30,837

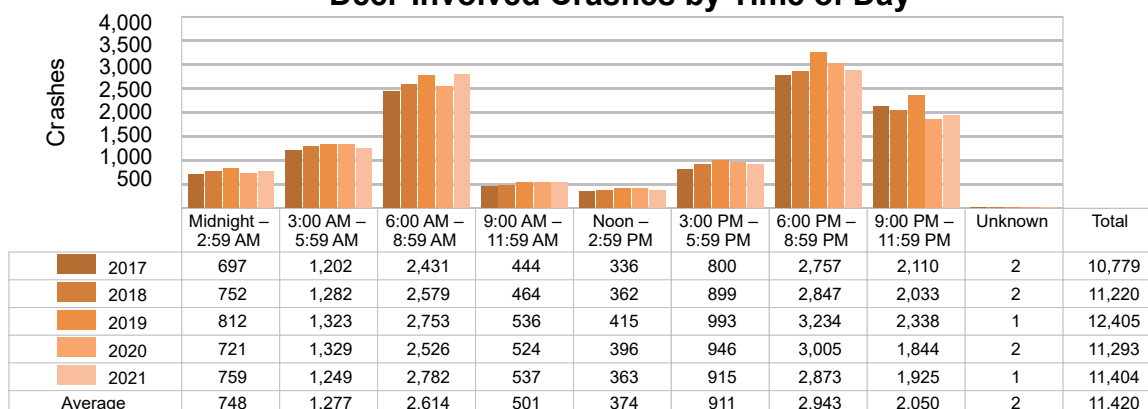


5-Year Trend - Deer-Involved Crashes by Time of Day

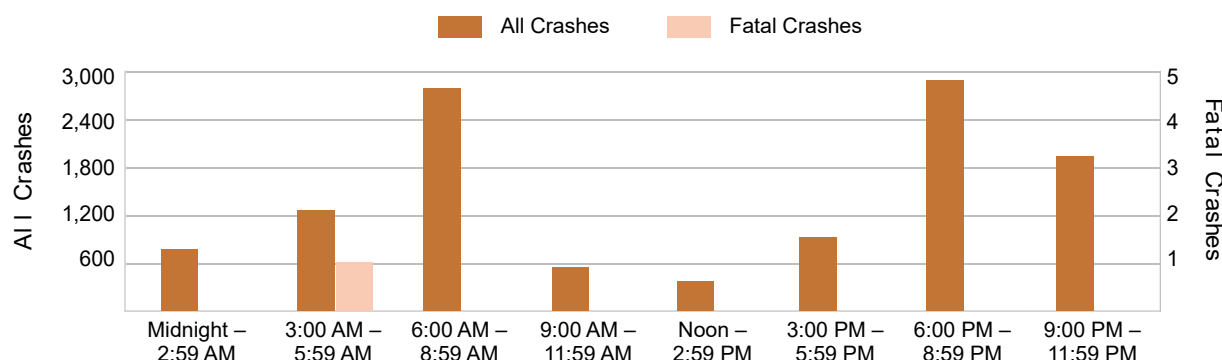
Time of Day	2017		2018		2019		2020		2021	
	Total Crashes	Fatal Crashes	Total Crashes	Fatal Crashes	Total Crashes	Fatal Crashes	Total Crashes	Fatal Crashes	Total Crashes	Fatal Crashes
Midnight – 2:59 AM	697	2	752	0	812	0	721	0	759	0
3:00 AM – 5:59 AM	1,202	0	1,282	0	1,323	0	1,329	0	1,249	1
6:00 AM – 8:59 AM	2,431	0	2,579	0	2,753	0	2,526	0	2,782	0
9:00 AM – 11:59 AM	444	0	464	0	536	0	524	0	537	0
Noon – 2:59 PM	336	0	362	0	415	0	396	0	363	0
3:00 PM – 5:59 PM	800	1	899	1	993	0	946	0	915	0
6:00 PM – 8:59 PM	2,757 †	1	2,847 †	2	3,234 †	3	3,005 †	0	2,873 †	0
9:00 PM – 11:59 PM	2,110	0	2,033	0	2,338	1	1,844	1	1,925	0
Unknown	2	0	2	0	1	0	2	0	1	0
Total	10,779	4	11,220	3	12,405	4	11,293	1	11,404	1

Note: † Indicates that the highest number of total crashes reported in the 5-year period occurred in the same time period.

5-Year Trend Deer-Involved Crashes by Time of Day

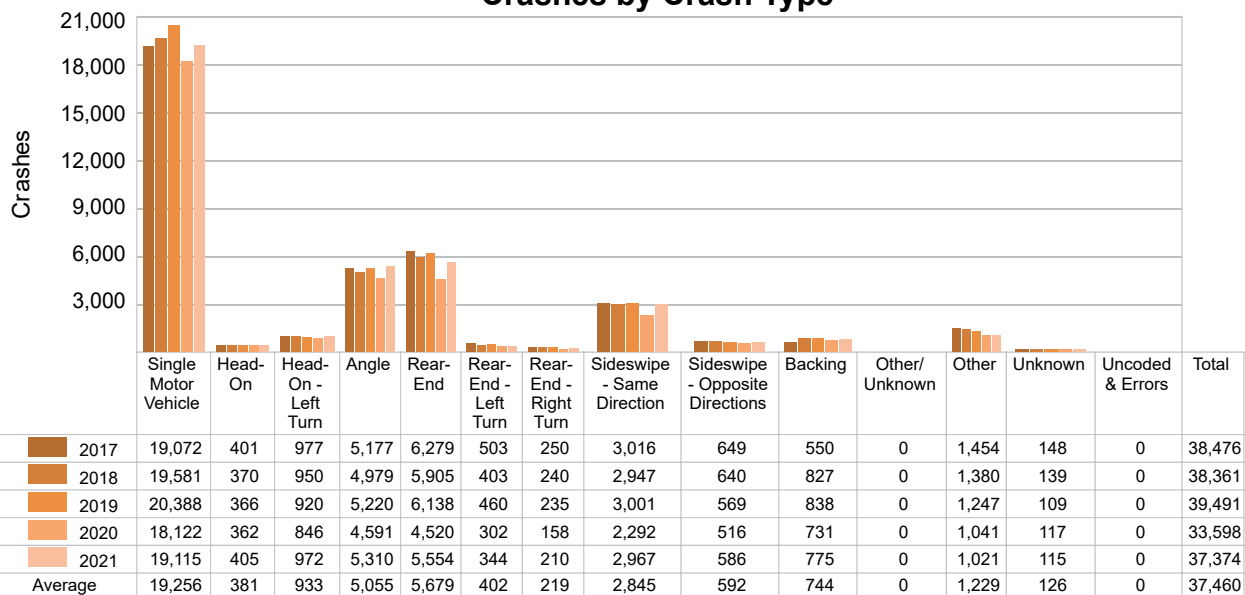


2021 Time and Severity of Deer-Involved Crashes



5-Year Trend - Crashes by Crash Type

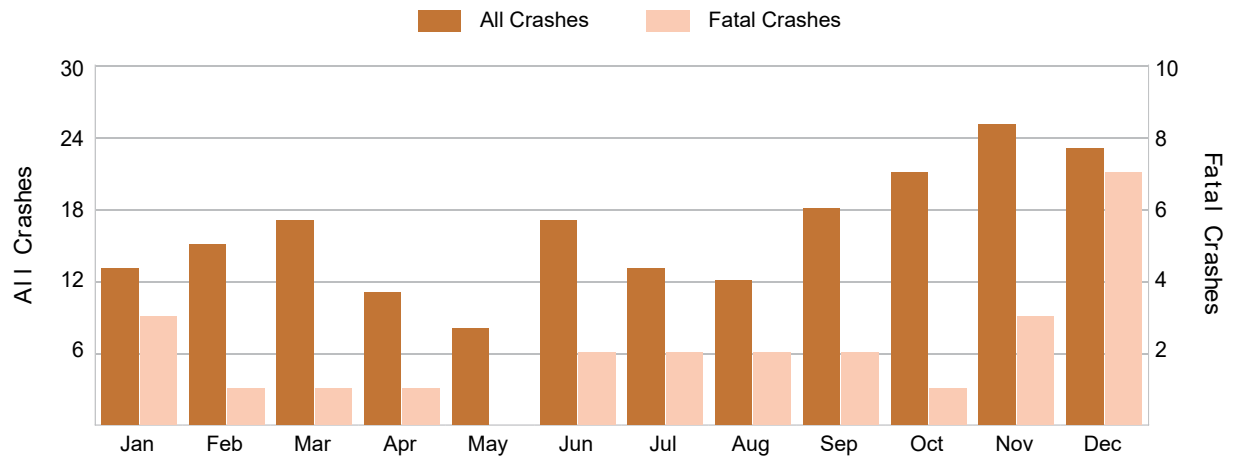
Crash Type	2017		2018		2019		2020		2021	
	Total Crashes	Fatal Crashes	Total Crashes	Fatal Crashes	Total Crashes	Fatal Crashes	Total Crashes	Fatal Crashes	Total Crashes	Fatal Crashes
Single Motor Vehicle	19,072	72	19,581	64	20,388	69	18,122	92	19,115	87
Head-On	401	15	370	19	366	24	362	17	405	22
Head-On - Left Turn	977	7	950	6	920	5	846	5	972	10
Angle	5,177	31	4,979	28	5,220	26	4,591	22	5,310	26
Rear-End	6,279	11	5,905	14	6,138	5	4,520	6	5,554	17
Rear-End - Left Turn	503	2	403	0	460	1	302	0	344	1
Rear-End - Right Turn	250	0	240	0	235	0	158	1	210	0
Sideswipe - Same Direction	3,016	0	2,947	4	3,001	3	2,292	3	2,967	3
Sideswipe - Opposite Directions	649	1	640	4	569	1	516	2	586	2
Backing	550	0	827	1	838	0	731	0	775	0
Other/Unknown	0	0	0	0	0	0	0	0	0	0
Other	1,454	10	1,380	13	1,247	4	1,041	10	1,021	10
Unknown	148	1	139	0	109	1	117	1	115	0
Uncoded & Errors	0	0	0	0	0	0	0	0	0	0
Total	38,476	150	38,361	153	39,491	139	33,598	159	37,374	178

5-Year Trend
Crashes by Crash Type

5-Year Trend - Pedestrian-Involved Crashes by Month

Month	2017		2018		2019		2020		2021	
	Total Crashes	Fatal Crashes	Total Crashes	Fatal Crashes	Total Crashes	Fatal Crashes	Total Crashes	Fatal Crashes	Total Crashes	Fatal Crashes
January	20	1	19	3	18	1	6	0	13	3
February	24	2	15	2	16	3	14	2	15	1
March	12	0	15	2	18	2	3	0	17	1
April	13	1	7	1	9	1	2	0	11	1
May	18	1	16	1	17	2	8	3	8	0
June	15	3	17	1	14	0	22	4	17	2
July	12	1	15	2	22	0	17	1	13	2
August	18	1	12	4	23	4	20	3	12	2
September	22	2	18	1	27	2	18	4	18	2
October	21	2	20	1	31	3	22	4	21	1
November	27	4	19	1	21	2	26	3	25	3
December	22	2	26	3	20	2	17	2	23	7
Total	224	20	199	22	236	22	175	26	193	25

2021 Pedestrian-Involved Crashes by Month

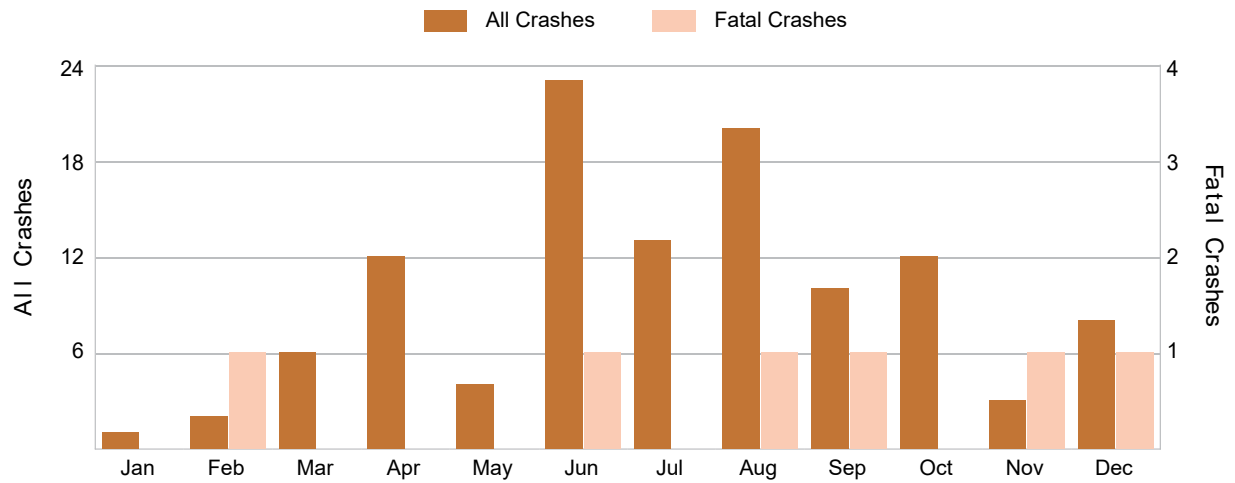


MSP District 3 - Thumb & Tri-Cities (continued)

5-Year Trend - Bicyclist-Involved Crashes by Month

Month	2017		2018		2019		2020		2021	
	Total Crashes	Fatal Crashes	Total Crashes	Fatal Crashes	Total Crashes	Fatal Crashes	Total Crashes	Fatal Crashes	Total Crashes	Fatal Crashes
January	4	0	5	0	3	0	3	0	1	0
February	5	0	2	1	0	0	3	0	2	1
March	7	1	1	0	3	0	3	0	6	0
April	8	0	3	0	10	0	3	0	12	0
May	15	0	10	0	17	0	9	0	4	0
June	21	1	13	0	13	0	20	1	23	1
July	20	0	18	0	19	0	18	0	13	0
August	22	0	26	1	26	1	18	1	20	1
September	24	0	27	2	15	0	18	1	10	1
October	15	0	7	0	17	0	5	0	12	0
November	10	0	2	0	1	0	11	0	3	1
December	3	0	6	0	5	0	5	2	8	1
Total	154	2	120	4	129	1	116	5	114	6

2021 Bicyclist-Involved Crashes by Month



2021 - Reported Motor Vehicle Crashes by County

County	Crashes												
	Total	Fatal	Injury	Property Damage	Inter-State	US Route	State Route	Local Street	Alcohol-Involved	Drug-Involved	Deer-Involved	Pedestrian-Involved	Bicyclist-Involved
Arenac	711	4	90	617	94	163	78	376	32	20	384	0	0
Bay	2,938	13	504	2,421	250	154	984	1,544	123	20	578	27	11
Genesee	10,601	59	2,301	8,241	1,188	410	1,505	7,477	365	156	1,254	65	27
Gladwin	710	2	80	628	0	0	279	425	33	6	396	9	1
Huron	1,395	6	162	1,227	0	0	569	824	36	11	950	5	1
Iosco	610	4	125	481	0	166	147	295	29	9	256	2	3
Lapeer	2,841	16	415	2,410	180	0	874	1,786	89	38	1,355	6	5
Midland	2,353	8	316	2,029	0	342	397	1,612	70	20	864	8	8
Ogemaw	791	7	104	680	137	0	234	413	21	3	395	1	1
Saginaw	5,428	18	1,017	4,393	514	0	1,940	2,951	219	69	941	38	22
St. Clair	3,626	17	623	2,986	614	0	664	2,340	140	52	1,012	12	24
Sanilac	1,541	11	126	1,404	0	0	674	866	33	7	1,080	5	0
Shiawassee	2,106	5	283	1,818	234	0	681	1,190	79	28	986	13	9
Tuscola	1,723	8	213	1,502	0	0	613	1,110	86	33	953	2	2
Total	37,374	178	6,359	30,837	3,211	1,235	9,639	23,209	1,355	472	11,404	193	114

2021 - People in Reported Motor Vehicle Crashes by County

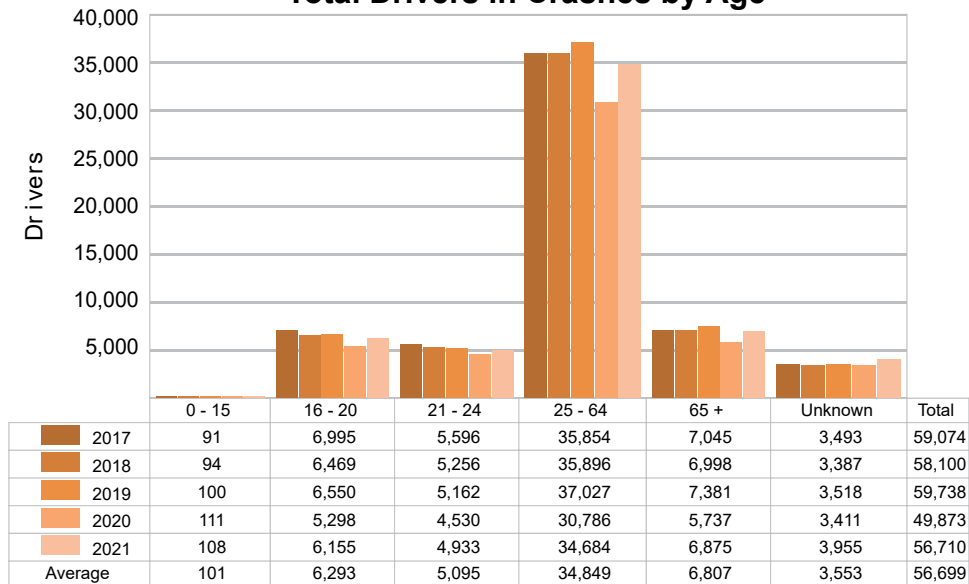
County	People					
	Fatalities	Suspected Serious Injuries	Suspected Minor Injuries	Possible Injuries	No Injuries	Uncoded & Errors
Arenac	4	45	49	99	849	15
Bay	13	134	311	793	4,612	448
Genesee	60	465	1,520	3,810	16,908	1,997
Gladwin	2	36	64	47	904	22
Huron	6	51	157	109	1,464	39
Iosco	5	41	62	148	778	25
Lapeer	16	114	371	429	3,966	111
Midland	10	79	240	364	3,164	143
Ogemaw	7	43	52	126	1,095	16
Saginaw	18	244	697	1,758	9,060	659
St. Clair	19	168	552	760	5,480	407
Sanilac	11	34	116	118	1,787	30
Shiawassee	6	111	201	347	2,878	111
Tuscola	9	84	208	164	2,130	43
Total	186	1,649	4,600	9,072	55,075	4,066

MSP District 3 - Thumb & Tri-Cities (continued)

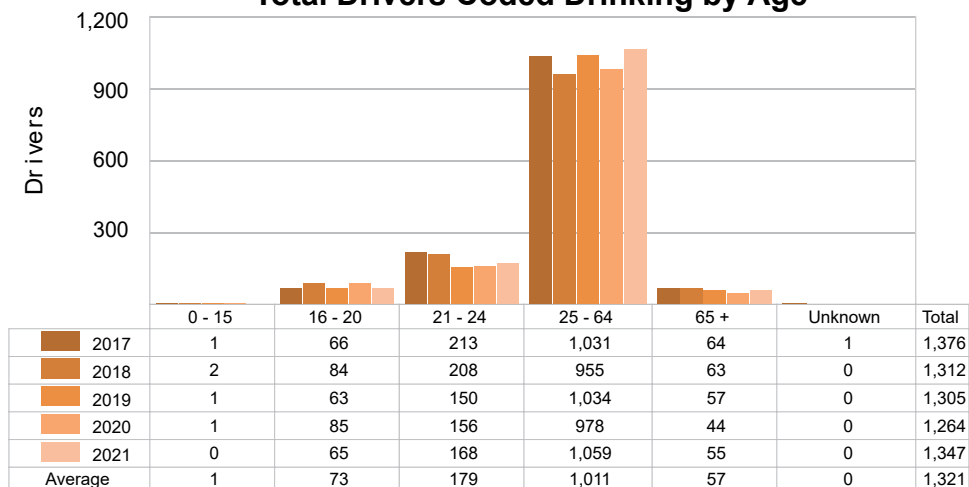
5-Year Trend - Drivers in Crashes Coded Drinking by Driver Age

Driver Age	2017		2018		2019		2020		2021	
	Total Drivers in Crashes	Total Drivers Coded Drinking	Total Drivers in Crashes	Total Drivers Coded Drinking	Total Drivers in Crashes	Total Drivers Coded Drinking	Total Drivers in Crashes	Total Drivers Coded Drinking	Total Drivers in Crashes	Total Drivers Coded Drinking
0 - 15	91	1	94	2	100	1	111	1	108	0
16 - 20	6,995	66	6,469	84	6,550	63	5,298	85	6,155	65
21 - 24	5,596	213	5,256	208	5,162	150	4,530	156	4,933	168
25 - 64	35,854	1,031	35,896	955	37,027	1,034	30,786	978	34,684	1,059
65 +	7,045	64	6,998	63	7,381	57	5,737	44	6,875	55
Unknown	3,493	1	3,387	0	3,518	0	3,411	0	3,955	0
Total	59,074	1,376	58,100	1,312	59,738	1,305	49,873	1,264	56,710	1,347

5-Year Trend Total Drivers in Crashes by Age



5-Year Trend Total Drivers Coded Drinking by Age



**2021 - Bodily Alcohol Concentration (BAC) Results Among
All Vehicle Drivers in Alcohol-Involved Crashes by Age**

Age Group	Drivers				BAC Result Range for Drivers Coded Drinking				
	Total Drivers in Alcohol-Involved Crashes	Total Drivers Tested in all Crashes	Total Drivers Coded Drinking, Tested	Total Drivers Coded Drinking	BAC = 0.00	BAC 0.01 g/dL to 0.07 g/dL	BAC 0.08 g/dL to 0.16 g/dL	BAC 0.17 g/dL and Above	BAC Not Reported
0 - 15	0	2	0	0	0	0	0	0	0
16 - 20	114	101	53	65	0	7	20	13	25
21 - 24	208	194	135	168	0	12	32	42	82
25 - 64	1,318	1,149	846	1,059	0	50	225	277	507
65 +	98	71	45	55	0	8	15	8	24
Unknown	96	1	0	0	0	0	0	0	0
Total	1,834	1,518	1,079	1,347	0	77	292	340	638

Notes: BAC measured in grams (g) per deciliter (dL).

BAC may not be reported if drivers are not tested or if the results are not available immediately (as in the case of a blood test).

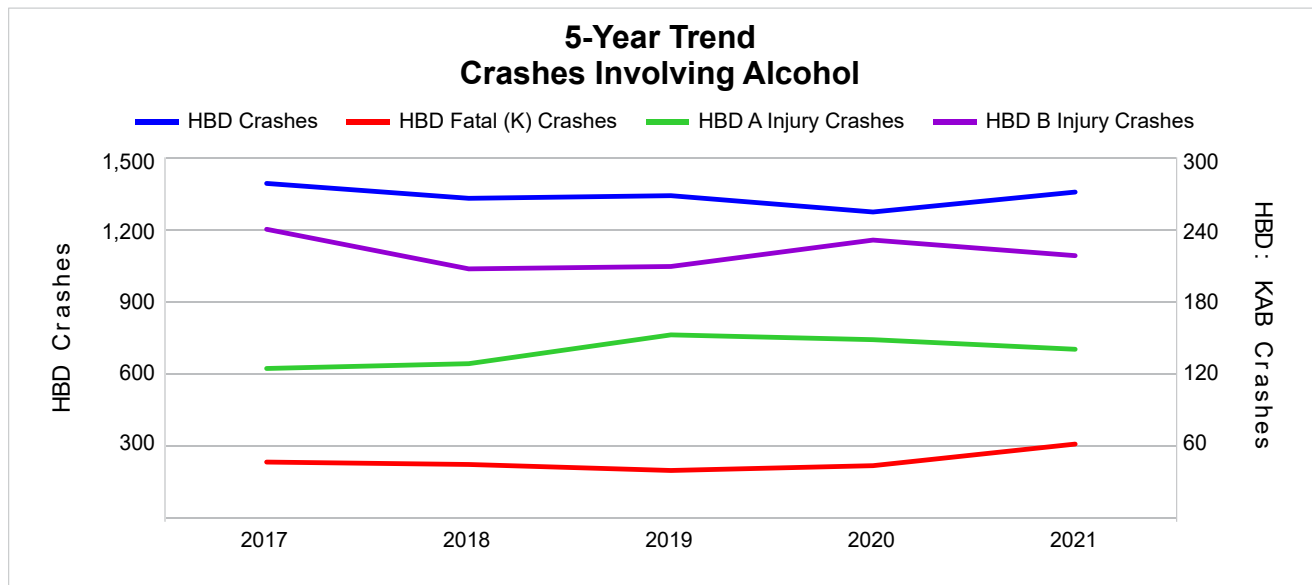
A driver may be coded by the officer as drinking even though no test is administered.

5-Year Trend - Crashes Involving Alcohol

Year	All Crashes	HBD Crashes	% HBD	Fatal Crashes	HBD Fatal Crashes	% HBD	A Injury Crashes	HBD A Injury Crashes	% HBD	B Injury Crashes	HBD B Injury Crashes	% HBD
2017	38,476	1,391	3.6	150	46	30.7	653	124	19.0	1,956	240	12.3
2018	38,361	1,329	3.5	153	44	28.8	587	128	21.8	1,837	207	11.3
2019	39,491	1,340	3.4	139	39	28.1	684	152	22.2	1,866	209	11.2
2020	33,598	1,272	3.8	159	43	27.0	674	148	22.0	1,781	231	13.0
2021	37,374	1,355	3.6	178 **	61 **	34.3 **	703 **	140	19.9	1,965 **	218	11.1 *

Note: * Indicates that the most recent year is the lowest number or percentage reported in the 5-year period in that column.

** Indicates that the most recent year is the highest number or percentage reported in the 5-year period in that column.



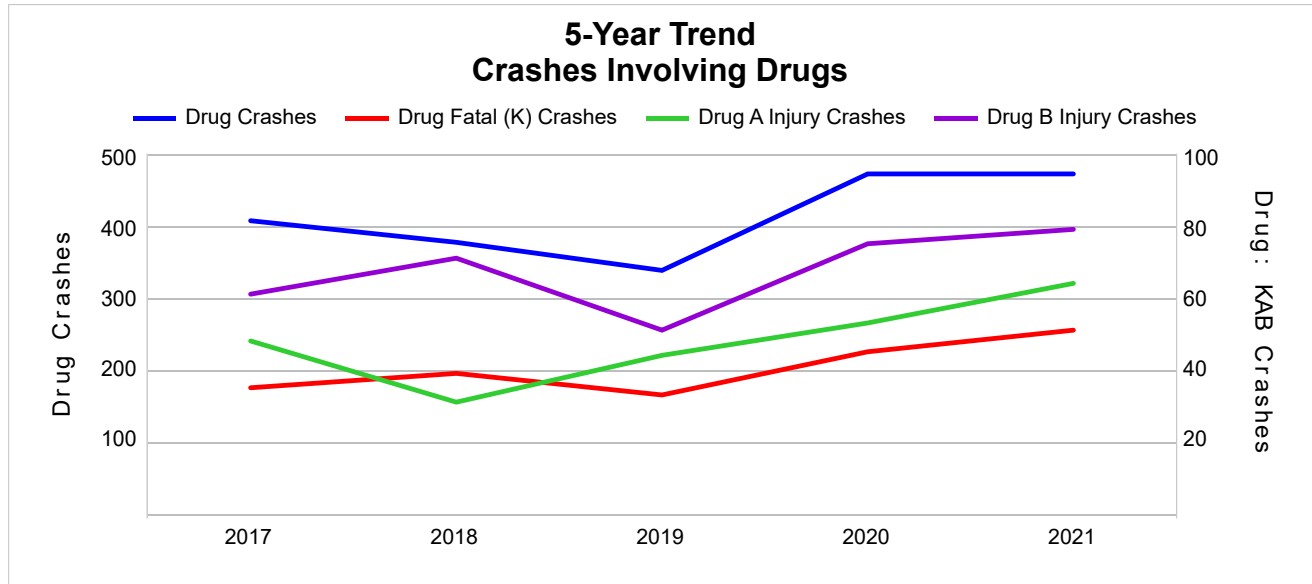
Note: Had-Been-Drinking (HBD)

5-Year Trend - Crashes Involving Drugs

Year	All Crashes	Drug Crashes	% Drug	Fatal Crashes	Drug Fatal Crashes	% Drug	A Injury Crashes	Drug A Injury Crashes	% Drug	B Injury Crashes	Drug B Injury Crashes	% Drug
2017	38,476	407	1.1	150	35	23.3	653	48	7.4	1,956	61	3.1
2018	38,361	377	1.0	153	39	25.5	587	31	5.3	1,837	71	3.9
2019	39,491	338	0.9	139	33	23.7	684	44	6.4	1,866	51	2.7
2020	33,598	472	1.4	159	45	28.3	674	53	7.9	1,781	75	4.2
2021	37,374	472	1.3	178 **	51 **	28.7 **	703 **	64 **	9.1 **	1,965 **	79 **	4.0

Note: * Indicates that the most recent year is the lowest number or percentage reported in the 5-year period in that column.

** Indicates that the most recent year is the highest number or percentage reported in the 5-year period in that column.

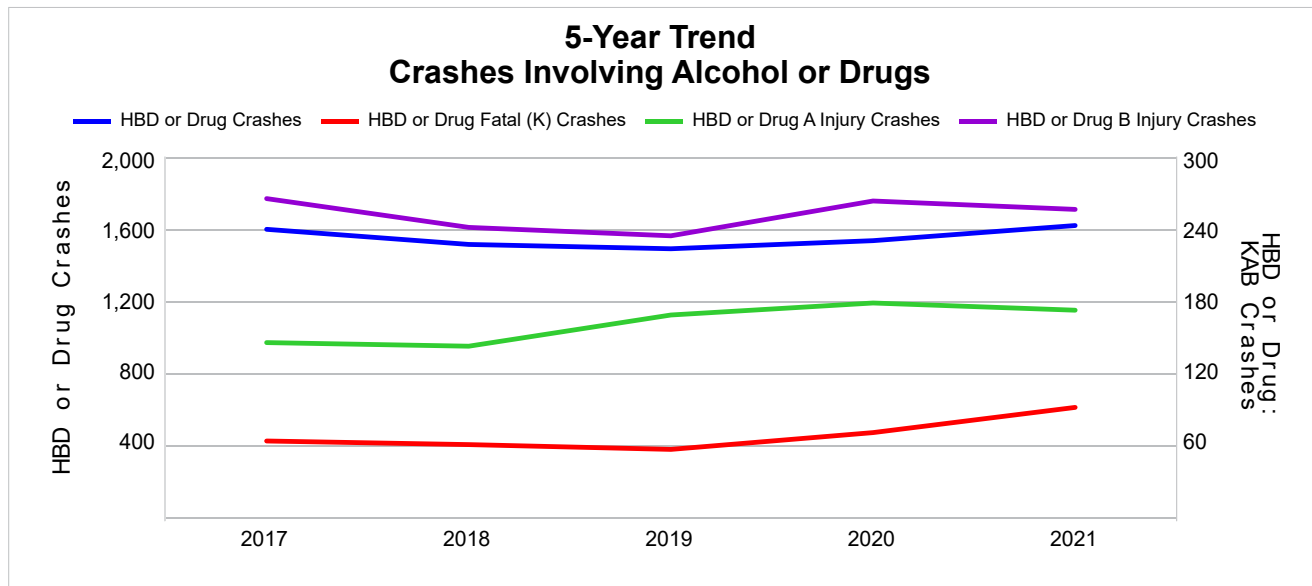


5-Year Trend - Crashes Involving Alcohol or Drugs

Year	All Crashes	HBD or Drug Crashes	% HBD or Drug	Fatal Crashes	HBD or Drug Fatal Crashes	% HBD or Drug	A Injury Crashes	HBD or Drug A Injury Crashes	% HBD or Drug	B Injury Crashes	HBD or Drug B Injury Crashes	% HBD or Drug
2017	38,476	1,596	4.1	150	63	42.0	653	145	22.2	1,956	265	13.5
2018	38,361	1,512	3.9	153	60	39.2	587	142	24.2	1,837	241	13.1
2019	39,491	1,488	3.8	139	56	40.3	684	168	24.6	1,866	234	12.5
2020	33,598	1,533	4.6	159	70	44.0	674	178	26.4	1,781	263	14.8
2021	37,374	1,617 **	4.3	178 **	91 **	51.1 **	703 **	172	24.5	1,965 **	256	13.0

Note: * Indicates that the most recent year is the lowest number or percentage reported in the 5-year period in that column.

** Indicates that the most recent year is the highest number or percentage reported in the 5-year period in that column.



Note: Had-Been-Drinking (HBD)

2021 - Restraints Worn Among Vehicle Drivers and Injured Passengers by Vehicle Type

Vehicle Type	Total Occupants			Fatalities			A - Suspected Serious			B - Suspected Minor			C - Possible Injury			No Injury		
	Total	Used Restraint	%	Total	Used Restraint	%	Total	Used Restraint	%	Total	Used Restraint	%	Total	Used Restraint	%	Total	Used Restraint	%
Passenger Car, SUV, Van	44,902	40,829	90.9	88	37	42.0	510	370	72.5	1,786	1,572	88.0	4,511	4,222	93.6	35,610	34,628	97.2
Motor Home	85	78	91.8	0	0	0.0	0	0	0.0	4	4	100.0	11	10	90.9	65	64	98.5
Pickup Truck	10,204	9,310	91.2	26	11	42.3	99	61	61.6	343	294	85.7	669	616	92.1	8,539	8,328	97.5
Small Truck Under 10,000 lbs. GVWR	232	204	87.9	0	0	0.0	3	3	100.0	4	3	75.0	7	7	100.0	197	191	97.0
Motorcycle	531	294	55.4	33	15	45.5	136	63	46.3	160	98	61.3	90	54	60.0	98	64	65.3
Moped/Goped	67	19	28.4	0	0	0.0	11	6	54.5	25	4	16.0	20	6	30.0	9	3	33.3
Go-Cart/Golf Cart	26	7	26.9	0	0	0.0	0	0	0.0	12	1	8.3	9	4	44.4	5	2	40.0
Snowmobile	8	6	75.0	2	2	100.0	2	1	50.0	2	1	50.0	0	0	0.0	2	2	100.0
Off-Road Vehicle (ORV)/All-Terrain Vehicle (ATV)	98	29	29.6	3	0	0.0	21	7	33.3	34	11	32.4	9	0	0.0	29	11	37.9
Other (non-registered farm equipment, construction equipment, snow plows, etc.)	200	122	61.0	0	0	0.0	3	1	33.3	3	2	66.7	8	6	75.0	156	113	72.4
Truck/Bus (over 10,000 lbs. GVWR/8+ occupants/hazmat placard)	1,509	1,357	89.9	3	2	66.7	8	6	75.0	42	24	57.1	78	45	57.7	1,315	1,280	97.3
Uncoded & Errors	995	0	0.0	0	0	0.0	0	0	0.0	0	0	0.0	0	0	0.0	4	0	0.0
Total	58,857	52,255	88.8	155	67	43.2	793	518	65.3	2,415	2,014	83.4	5,412	4,970	91.8	46,029	44,686	97.1

Note: Restraint Use includes shoulder belt only used, lap belt only used, both lap and shoulder belts used, child restraint used, restraint failure, and helmet worn.

2021 - Restraints Worn Among Vehicle Drivers and Injured Passengers by Age

Age Group	Total Occupants			Fatalities			A - Suspected Serious			B - Suspected Minor			C - Possible Injury			No Injury		
	Total	Used Restraint	%	Total	Used Restraint	%	Total	Used Restraint	%	Total	Used Restraint	%	Total	Used Restraint	%	Total	Used Restraint	%
0 - 15	652	570	87.4	3	2	66.7	30	22	73.3	139	110	79.1	398	366	92.0	79	70	88.6
16 - 20	6,488	6,193	95.5	13	5	38.5	80	55	68.8	314	255	81.2	673	601	89.3	5,400	5,277	97.7
21 - 24	5,119	4,812	94.0	15	4	26.7	81	51	63.0	234	181	77.4	533	469	88.0	4,241	4,107	96.8
25 - 64	35,532	33,776	95.1	101	41	40.6	509	313	61.5	1,398	1,160	83.0	3,092	2,847	92.1	30,352	29,415	96.9
65 +	7,111	6,899	97.0	23	15	65.2	93	77	82.8	329	308	93.6	716	687	95.9	5,941	5,812	97.8
Unknown	3,955	5	0.1	0	0	0.0	0	0	0.0	1	0	0.0	0	0	0.0	16	5	31.3
Total	58,857	52,255	88.8	155	67	43.2	793	518	65.3	2,415	2,014	83.4	5,412	4,970	91.8	46,029	44,686	97.1

Note: Restraint Use includes shoulder belt only used, lap belt only used, both lap and shoulder belts used, child restraint used, restraint failure, and helmet worn.

5-Year Trend - Restraint Use Among Drivers

Restraint Use	2017			2018			2019			2020			2021		
	Drivers	Fatal Drivers	Injured Drivers	Drivers	Fatal Drivers	Injured Drivers	Drivers	Fatal Drivers	Injured Drivers	Drivers	Fatal Drivers	Injured Drivers	Drivers	Fatal Drivers	Injured Drivers
No Belts Available	133	1	40	116	2	22	96	0	11	106	1	22	132	0	26
Shoulder Belt Only Used	274	0	38	229	1	30	307	0	45	195	0	23	253	0	32
Lap Belt Only Used	177	0	21	165	0	29	138	0	19	90	0	9	126	0	17
Both Lap & Shoulder Belt Used	52,883	45	6,065	52,041	47	5,800	53,468	46	5,874	43,675	23	4,783	49,784	41	5,463
No Belts Used	494	30	233	491	29	231	456	28	221	510	39	264	514	29	285
Child Restraint Used - Forward Facing	0	0	0	3	0	1	0	0	0	0	0	0	0	0	0
Child Restraint Not Used, Unavailable or Improper Use	0	0	0	0	0	0	0	0	0	0	0	0	0	0	0
Child Restraint Used - Rear Facing	0	0	0	0	0	0	0	0	0	0	0	0	0	0	0
Child Restraint Used - Booster Seat	5	0	0	0	0	0	0	0	0	0	0	0	0	0	0
Restraint Failure	21	0	5	11	0	2	16	0	2	11	0	2	4	0	2
Restraint Use Unknown	4,323	7	195	4,289	14	191	4,519	10	223	4,439	17	245	5,030	23	243
Helmet Worn	274	11	199	260	10	198	260	5	198	303	15	222	308	17	217
Helmet Not Worn	167	13	133	171	7	132	188	7	140	260	15	192	247	14	188
Helmet Use Unknown	16	1	7	21	1	13	32	3	20	38	3	20	41	5	26
Uncoded & Errors	307	0	0	303	0	1	258	0	0	246	0	0	271	0	0
Total	59,074	108	6,936	58,100	111	6,650	59,738	99	6,753	49,873	113	5,782	56,710	129	6,499

5-Year Trend - Restraint Use Among Drivers Coded Drinking

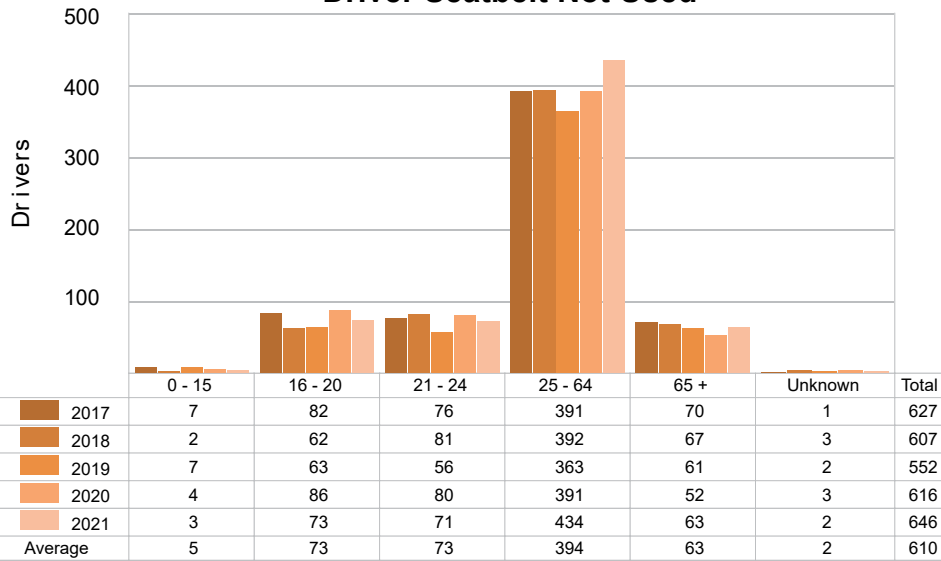
Restraint Use	2017			2018			2019			2020			2021		
	Drivers	Fatal Drivers	Injured Drivers	Drivers	Fatal Drivers	Injured Drivers	Drivers	Fatal Drivers	Injured Drivers	Drivers	Fatal Drivers	Injured Drivers	Drivers	Fatal Drivers	Injured Drivers
No Belts Available	4	0	2	7	1	2	1	0	0	5	0	2	6	0	4
Shoulder Belt Only Used	9	0	3	3	0	0	11	0	2	8	0	3	6	0	0
Lap Belt Only Used	5	0	2	1	0	1	3	0	2	4	0	0	3	0	2
Both Lap & Shoulder Belt Used	958	7	295	923	8	287	922	6	278	824	1	273	942	12	294
No Belts Used	117	12	82	114	11	74	111	13	74	119	15	76	108	11	67
Child Restraint Used - Forward Facing	0	0	0	0	0	0	0	0	0	0	0	0	0	0	0
Child Restraint Not Used, Unavailable or Improper Use	0	0	0	0	0	0	0	0	0	0	0	0	0	0	0
Child Restraint Used - Rear Facing	0	0	0	0	0	0	0	0	0	0	0	0	0	0	0
Child Restraint Used - Booster Seat	0	0	0	0	0	0	0	0	0	0	0	0	0	0	0
Restraint Failure	0	0	0	0	0	0	3	0	1	1	0	1	0	0	0
Restraint Use Unknown	223	3	59	220	4	67	216	3	70	230	3	83	203	8	54
Helmet Worn	15	0	13	12	0	10	3	0	3	16	3	11	16	2	11
Helmet Not Worn	43	9	31	28	3	21	33	2	26	55	8	42	54	7	44
Helmet Use Unknown	1	1	0	4	0	3	2	0	0	2	1	1	9	2	6
Uncoded & Errors	1	0	0	0	0	0	0	0	0	0	0	0	0	0	0
Total	1,376	32	487	1,312	27	465	1,305	24	456	1,264	31	492	1,347	42	482

5-Year Trend - Seatbelt Not Used Among Drivers by Age

Age Group	2017			2018			2019			2020			2021		
	Drivers	Fatal Drivers	Injured Drivers	Drivers	Fatal Drivers	Injured Drivers	Drivers	Fatal Drivers	Injured Drivers	Drivers	Fatal Drivers	Injured Drivers	Drivers	Fatal Drivers	Injured Drivers
0 - 15	7	0	3	2	0	2	7	0	2	4	0	0	3	0	2
16 - 20	82	0	46	62	2	23	63	1	39	86	5	50	73	5	38
21 - 24	76	5	42	81	3	45	56	3	32	80	10	42	71	6	40
25 - 64	391	19	158	392	20	164	363	21	137	391	16	170	434	15	206
65 +	70	7	24	67	6	19	61	3	22	52	9	24	63	3	25
Unknown	1	0	0	3	0	0	2	0	0	3	0	0	2	0	0
Total	627	31	273	607	31	253	552	28	232	616	40	286	646	29	311

Note: Seatbelt Not Used includes no belts available or no belts used.

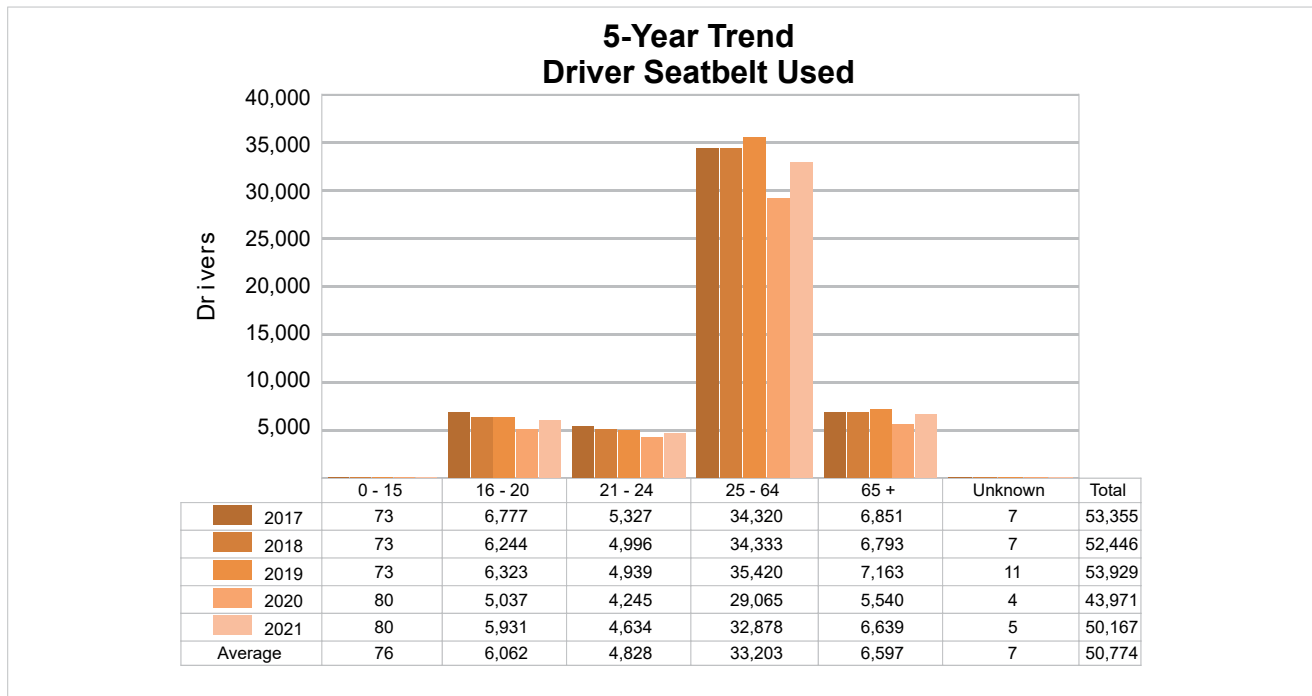
5-Year Trend Driver Seatbelt Not Used



5-Year Trend - Seatbelt Used Among Drivers by Age

Age Group	2017			2018			2019			2020			2021		
	Drivers	Fatal Drivers	Injured Drivers	Drivers	Fatal Drivers	Injured Drivers	Drivers	Fatal Drivers	Injured Drivers	Drivers	Fatal Drivers	Injured Drivers	Drivers	Fatal Drivers	Injured Drivers
0 - 15	73	0	12	73	1	13	73	0	12	80	0	12	80	0	13
16 - 20	6,777	2	805	6,244	5	717	6,323	2	785	5,037	1	581	5,931	4	652
21 - 24	5,327	4	645	4,996	1	559	4,939	1	549	4,245	0	480	4,634	3	535
25 - 64	34,320	21	3,805	34,333	29	3,710	35,420	29	3,677	29,065	13	3,035	32,878	24	3,492
65 +	6,851	18	862	6,793	12	862	7,163	14	914	5,540	9	709	6,639	10	822
Unknown	7	0	0	7	0	0	11	0	3	4	0	0	5	0	0
Total	53,355	45	6,129	52,446	48	5,861	53,929	46	5,940	43,971	23	4,817	50,167	41	5,514

Note: Seatbelt Used includes shoulder belt only used, lap belt only used, both lap and shoulder belts used, and restraint failure.



5-Year Trend - Drivers in Crashes by Hazardous Action

Hazardous Action	2017		2018		2019		2020		2021	
	Total Drivers in Crashes	Drivers in Fatal Crashes	Total Drivers in Crashes	Drivers in Fatal Crashes	Total Drivers in Crashes	Drivers in Fatal Crashes	Total Drivers in Crashes	Drivers in Fatal Crashes	Total Drivers in Crashes	Drivers in Fatal Crashes
None	32,111	96	31,684	110	33,523	92	28,181	83	31,359	100
Speed Too Fast	4,167	19	4,810	28	4,234	23	3,078	36	3,577	41
Speed Too Slow	47	0	46	1	22	0	24	0	26	1
Failed to Yield	5,264	21	4,986	13	5,046	14	4,410	18	5,231	20
Disregard Traffic Control	1,289	14	1,289	18	1,318	11	1,281	5	1,476	7
Drove Wrong Way	37	1	41	2	32	0	29	2	47	2
Drove Left of Center	342	10	355	13	312	12	306	11	406	12
Improper Passing	312	1	273	3	332	3	281	0	349	1
Improper Lane Use	1,042	2	1,161	0	1,158	2	867	3	1,163	3
Improper Turn	672	2	598	0	649	1	539	3	573	0
Improper/No Signal	59	0	52	0	54	0	38	0	39	0
Improper Backing	828	0	899	0	879	0	709	0	749	1
Unable to Stop in Assured Clear Distance	6,247	3	5,808	14	6,117	6	4,313	4	5,388	14
Other	1,963	11	1,913	15	1,975	9	1,762	19	1,889	14
Unknown	2,244	21	2,016	19	2,001	23	1,888	30	2,162	49
Reckless Driving	310	10	279	7	293	7	341	11	352	7
Careless/Negligent Driving	1,776	17	1,571	17	1,548	14	1,590	10	1,659	7
Uncoded & Errors	364	3	319	3	245	3	236	5	265	2
Total	59,074	231	58,100	263	59,738	220	49,873	240	56,710	281

Office of Highway Safety Planning

Physical Address:
7150 Harris Drive
Dimondale, Michigan 48821

Mailing Address:
P.O. Box 30634
Lansing, Michigan 48909

Find us on the web:
MichiganTrafficCrashFacts.org
mtcf-info@umich.edu

