



2021

# Michigan Traffic Crash Facts

**MTCF**  
Michigan Traffic  
Crash Facts

## Reporting Criteria

Please pay particular attention to the wording when interpreting the three levels of data gathered for this report.

### Crash

The Crash Level analyzes data related to crash events and returns one result per crash.

Examples: Time, weather, and location.

### Units

The Units Level analyzes the experience of the units in the crash and returns one result per vehicle, driver, pedestrian, bicyclist, or train.

Examples: Vehicle type, driver condition, and unit events.

### People

The People Level analyzes the experience of the people involved in the crash and returns one result per occupant/person/party.

Examples: Age, injury severity, and seat belt or helmet use.

### **KABCO Injury Indicator:**

K = Killed

A = Suspected Serious Injury

B = Suspected Minor Injury

C = Possible Injury

O = No Injury

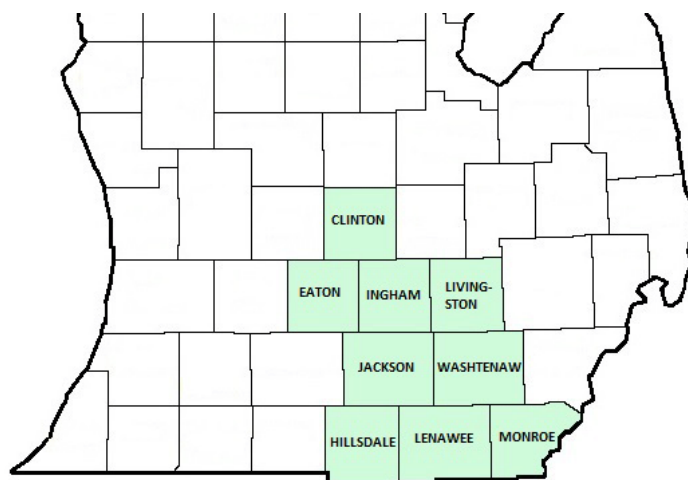
Property Damage Only (PDO)



## Michigan State Police (MSP) District 1 - Central

### 2021 Traffic Crash Data & 2017-2021 5-Year Trends

Beginning in 2011, District 1 is comprised of Clinton, Eaton, Hillsdale, Ingham, Jackson, Lenawee, Livingston, Monroe and Washtenaw counties. Trend tables for this report are based on those counties.



### Sources:

The crashes in this report occurred on public roadways in Michigan and resulted in injuries, fatalities, or property damage (with \$1,000 as a reporting threshold). The information was gathered from Michigan Traffic Crash Report Forms (UD-10) submitted by local police departments, sheriff's offices, and the Michigan State Police. Other related information was obtained from the departments of Transportation, State, and Community Health.

## MSP District 1 - Central

- There were 38,842 crashes in District 1 during 2021. [Page 1]
- A total of 165 fatalities resulted from 154 fatal crashes in 2021 in District 1. [Page 1]
- There were 9,050 injuries and 6,616 injury crashes. [Page 1]
- There were 32,072 property damage only crashes (no fatalities or injuries). [Page 1]
- October had the highest number of crashes (4,511). [Pages 1-2]
- August had the highest number of fatal crashes (19) and fatalities (21). [Pages 1-2]
- August had the highest number of injury crashes (706) and injuries (995). [Page 1]
- November had the highest number of property damage only crashes (3,897). [Page 1]
- Of all vehicles involved in fatal crashes, 24 (9.9%) were motorcycles. [Page 1]
- Friday was the day of the week with the highest number of crashes (6,397) and Saturday had the highest number of fatal crashes (35). [Pages 2-3]
- The 3:00 PM – 5:59 PM time period had the highest number of crashes (8,556). This holds true for every year between 2017 and 2021. The 6:00 PM – 8:59 PM time period had the highest number of fatal crashes (30). [Pages 5-6]
- During the period from 2017 to 2021, the highest number of deer crashes occurred in 2019 (9,137). The 6:00 PM – 8:59 PM time period consistently had the highest number of deer-involved crashes during the five-year period. There were 0 fatal crashes involving deer in 2021. [Page 7]
- Washtenaw County (22.3%) had the highest number of crashes in District 1 in 2021, followed by Ingham County (20.3%), and Jackson County (13.5%). [Page 11]
- Ingham County (19.4%) had the highest number of fatalities in District 1 in 2021, followed by Washtenaw County (18.2%), and Jackson and Monroe County (12.7%). [Page 11]
- The highest number of drivers in crashes (74,899) occurred during 2019 and the highest number of drivers coded drinking in crashes (1,545) occurred during 2017 within the five year period between 2017 and 2021. [Page 12]
- A total of 1,455 crashes involved alcohol in 2021. [Page 13]
- Alcohol-involved fatal crashes were the highest in 2017 during the five-year period from 2017 to 2021 at 56. [Page 13]
- A total of 501 crashes, 41 fatal crashes, and 61 suspected injury crashes involved drugs in 2021. [Page 14]
- There were 55,090 drivers wearing seatbelts and 499 drivers not wearing seatbelts in crashes in 2021. Of the 499 drivers not wearing seatbelts, 31 (6.2%) were killed and 225 (45.1%) were injured. [Pages 17-19]
- The most common hazardous action coded for drivers in 2021 in all crashes was unable to stop in assured clear distance (7,162), while the most common hazardous action coded for drivers in fatal crashes was unknown (30). [Page 20]

## 2021 - Crashes and Injury by Month

Month	Crashes				People	
	Total	Fatal	Injury	Property Damage Only (PDO)	Fatalities	Injuries
January	3,133	11	440	2,682	11	579
February	3,073	7	432	2,634	7	583
March	2,311	12	365	1,934	13	461
April	2,362	6	487	1,869	7	663
May	2,864	18	523	2,323	20	723
June	3,161	6	661	2,494	7	960
July	2,878	13	598	2,267	14	844
August	3,215	19	706	2,490	21	995
September	3,423	15	697	2,711	16	978
October	4,511	17	674	3,820	17	874
November	4,472	18	557	3,897	19	731
December	3,439	12	476	2,951	13	659
<b>Total</b>	<b>38,842</b>	<b>154</b>	<b>6,616</b>	<b>32,072</b>	<b>165</b>	<b>9,050</b>

## 2021 - Driver Statistics

Age Group	MSP District 1 - Central			Driver Rates	
	2019 Population*	Licensed Drivers	Drivers in Crashes	Per 10k Population	Per 10k Licensed
0 - 15	264,711	7,642	127	4.8	166.2
16 - 20	121,887	67,569	7,350	603.0	1,087.8
21 - 24	106,676	68,548	6,277	588.4	915.7
25 - 64	752,813	688,148	37,264	495.0	541.5
65 +	248,844	247,315	6,790	272.9	274.5
Unknown	0	0	4,902	--	--
<b>Total</b>	<b>1,494,931</b>	<b>1,079,222</b>	<b>62,710</b>	<b>419.5</b>	<b>581.1</b>

\*2021 Population of Michigan Counties (by single-year of age) not yet available from U.S. Census Bureau.

## 2021 - Vehicles in Crashes

Vehicle Type	Motor Vehicles		Fatal Crashes		Injury Crashes	PDO Crashes
	Number of Vehicles	% of Total	Number	% of Total	Number	Number
Passenger Car, SUV, Van	50,044	79.8	160	66.1	9,351	40,533
Motor Home	237	0.4	1	0.4	36	200
Pickup Truck	7,582	12.1	40	16.5	1,289	6,253
Small Truck Under 10,000 lbs. GVWR	326	0.5	0	0.0	58	268
Motorcycle	470	0.7	24	9.9	340	106
Moped/Goped	65	0.1	0	0.0	55	10
Go-Cart/Golf Cart	6	0.0	0	0.0	5	1
Snowmobile	2	0.0	0	0.0	1	1
Off-Road Vehicle (ORV)/All-Terrain Vehicle (ATV)	29	0.0	1	0.4	15	13
Other (non-registered farm equipment, construction equipment, snow plows, etc.)	261	0.4	3	1.2	45	213
Truck/Bus (over 10,000 lbs. GVWR/8+ occupants/hazmat placard)	2,175	3.5	13	5.4	373	1,789
Uncoded & Errors	1,513	2.4	0	0.0	135	1,378
<b>Total</b>	<b>62,710</b>	<b>100.0</b>	<b>242</b>	<b>100.0</b>	<b>11,703</b>	<b>50,765</b>

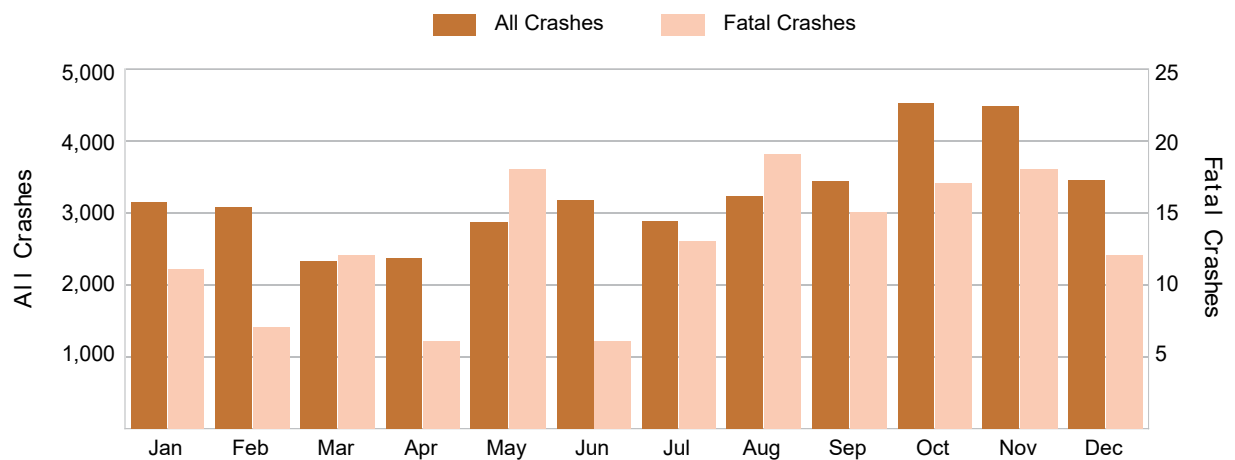
## 5-Year Trend - Crashes by Month

Month	2017		2018		2019		2020		2021	
	Total Crashes	Fatal Crashes	Total Crashes	Fatal Crashes	Total Crashes	Fatal Crashes	Total Crashes	Fatal Crashes	Total Crashes	Fatal Crashes
January	3,772	13	4,754	12	4,413	9	3,826	5	3,133	11
February	2,846	7	3,899	7	3,796	3	4,148	9	3,073	7
March	3,854	7	3,459	11	3,324	8	1,914	8	2,311	12
April	2,961	19	3,136	10	2,970	14	1,206	4	2,362	6
May	3,502	12	3,358	9	3,327	10	1,951	5	2,864	18
June	3,380	14	3,307	9	3,549	8	2,690	20	3,161	6
July	2,937	16	2,930	15	3,252	9	2,716	14	2,878	13
August	3,021	13	3,047	19	3,265	15	2,585	14	3,215	19
September	3,279	13	3,342	17	3,449	5	2,761	9	3,423	15
October	4,591	14	4,509	13	4,766	15	3,645	14	4,511	17
November	4,549	11	4,930	7	5,412	16	3,648	15	4,472	18
December	5,363	6	3,730	7	3,946	9	2,898	16	3,439	12
<b>Total</b>	<b>44,055</b>	<b>145</b>	<b>44,401</b>	<b>136</b>	<b>45,469</b>	<b>121</b>	<b>33,988</b>	<b>133</b>	<b>38,842</b>	<b>154</b>

## 5-Year Trend - Crashes by Day of Week

Day	2017		2018		2019		2020		2021	
	Total Crashes	Fatal Crashes	Total Crashes	Fatal Crashes	Total Crashes	Fatal Crashes	Total Crashes	Fatal Crashes	Total Crashes	Fatal Crashes
Monday	6,514	20	6,657	15	7,220	19	4,625	16	5,684	18
Tuesday	6,679	16	6,913	19	7,064	12	4,813	17	6,021	23
Wednesday	6,678	24	6,610	23	7,154	19	5,759	16	5,740	12
Thursday	6,958	17	6,948	10	6,819	14	5,292	14	5,656	26
Friday	7,436	27	7,504	23	7,240	20	5,440	34	6,397	23
Saturday	5,385	24	5,377	21	5,316	21	4,358	18	5,179	35
Sunday	4,405	17	4,392	25	4,656	16	3,701	18	4,165	17
<b>Total</b>	<b>44,055</b>	<b>145</b>	<b>44,401</b>	<b>136</b>	<b>45,469</b>	<b>121</b>	<b>33,988</b>	<b>133</b>	<b>38,842</b>	<b>154</b>

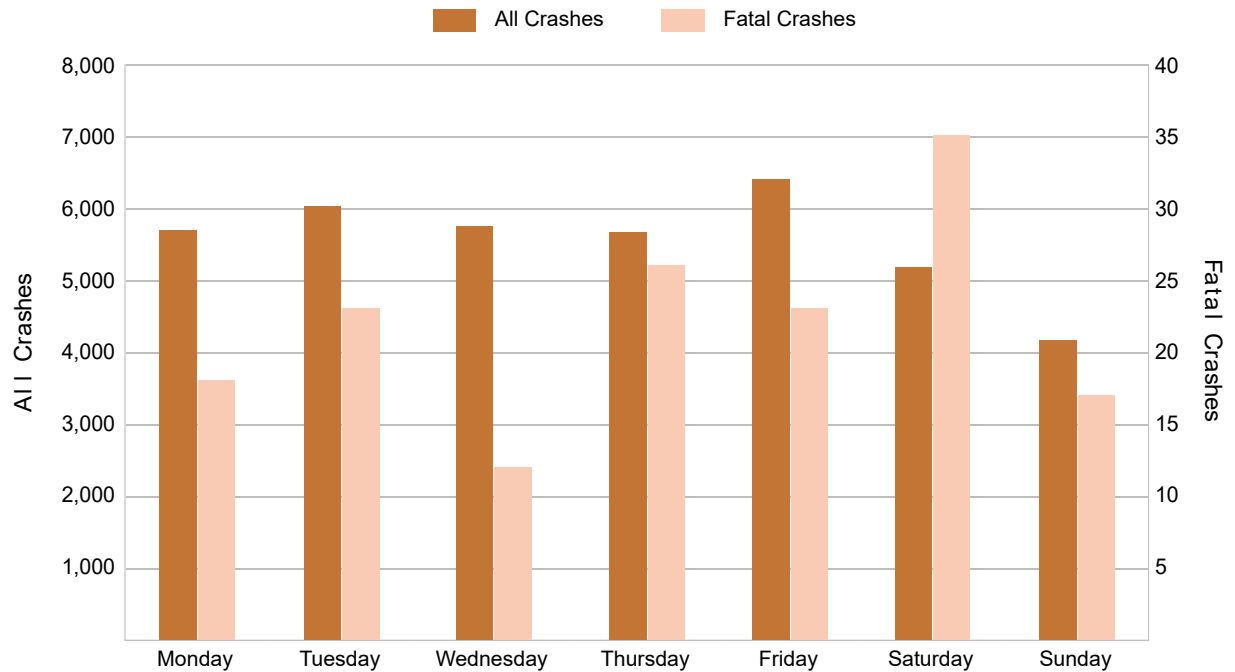
## 2021 Crashes by Month



## 2021 - Crashes by Day of Week

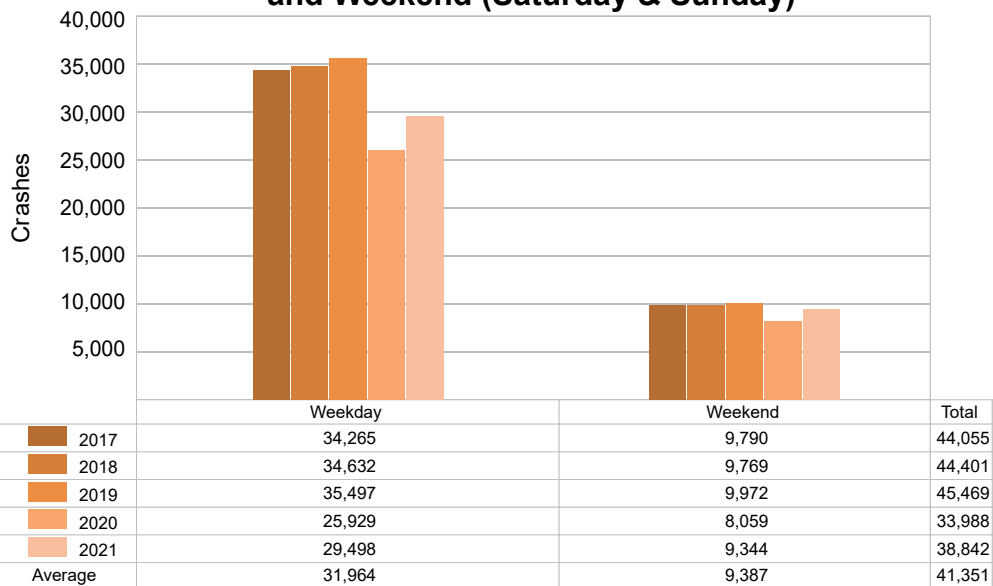
Day	All Crashes		Fatal Crashes		Injury Crashes			PDO Crashes
	Number	% of Total	Fatal	% of Fatal	A	B	C	Number
Monday	5,684	14.6	18	11.7	75	304	554	4,733
Tuesday	6,021	15.5	23	14.9	97	327	564	5,010
Wednesday	5,740	14.8	12	7.8	97	348	530	4,753
Thursday	5,656	14.6	26	16.9	86	315	560	4,669
Friday	6,397	16.5	23	14.9	102	367	600	5,305
Saturday	5,179	13.3	35	22.7	109	342	482	4,211
Sunday	4,165	10.7	17	11.0	93	290	374	3,391
<b>Total</b>	<b>38,842</b>	<b>100.0</b>	<b>154</b>	<b>100.0</b>	<b>659</b>	<b>2,293</b>	<b>3,664</b>	<b>32,072</b>

## 2021 Day of Week and Severity



## 5-Year Trend - Crashes by Weekday and Weekend

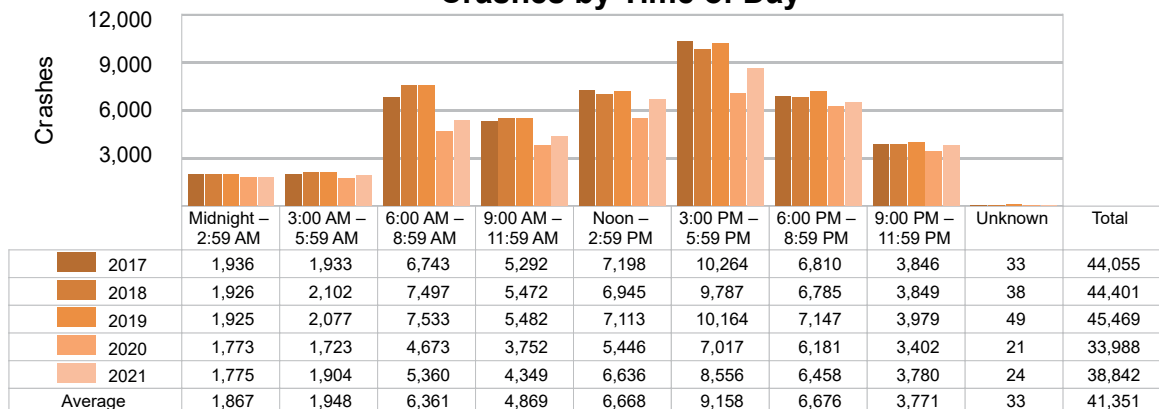
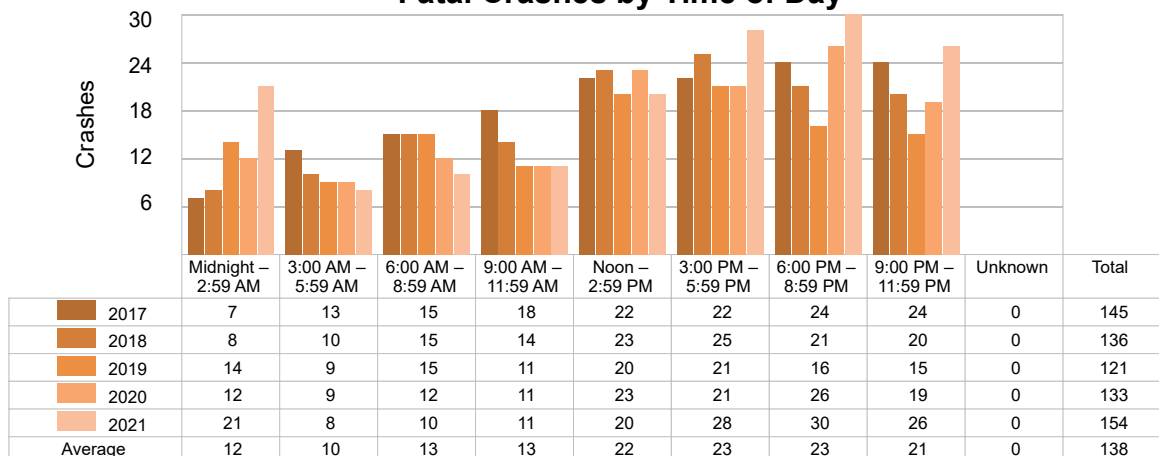
Portion of Week	2017		2018		2019		2020		2021	
	Total Crashes	Fatal Crashes	Total Crashes	Fatal Crashes	Total Crashes	Fatal Crashes	Total Crashes	Fatal Crashes	Total Crashes	Fatal Crashes
Weekday	34,265	104	34,632	90	35,497	84	25,929	97	29,498	102
Weekend	9,790	41	9,769	46	9,972	37	8,059	36	9,344	52
<b>Total</b>	<b>44,055</b>	<b>145</b>	<b>44,401</b>	<b>136</b>	<b>45,469</b>	<b>121</b>	<b>33,988</b>	<b>133</b>	<b>38,842</b>	<b>154</b>

5-Year Crash Trends by Weekday (Monday - Friday)  
and Weekend (Saturday & Sunday)

## 5-Year Trend - Crashes by Time of Day

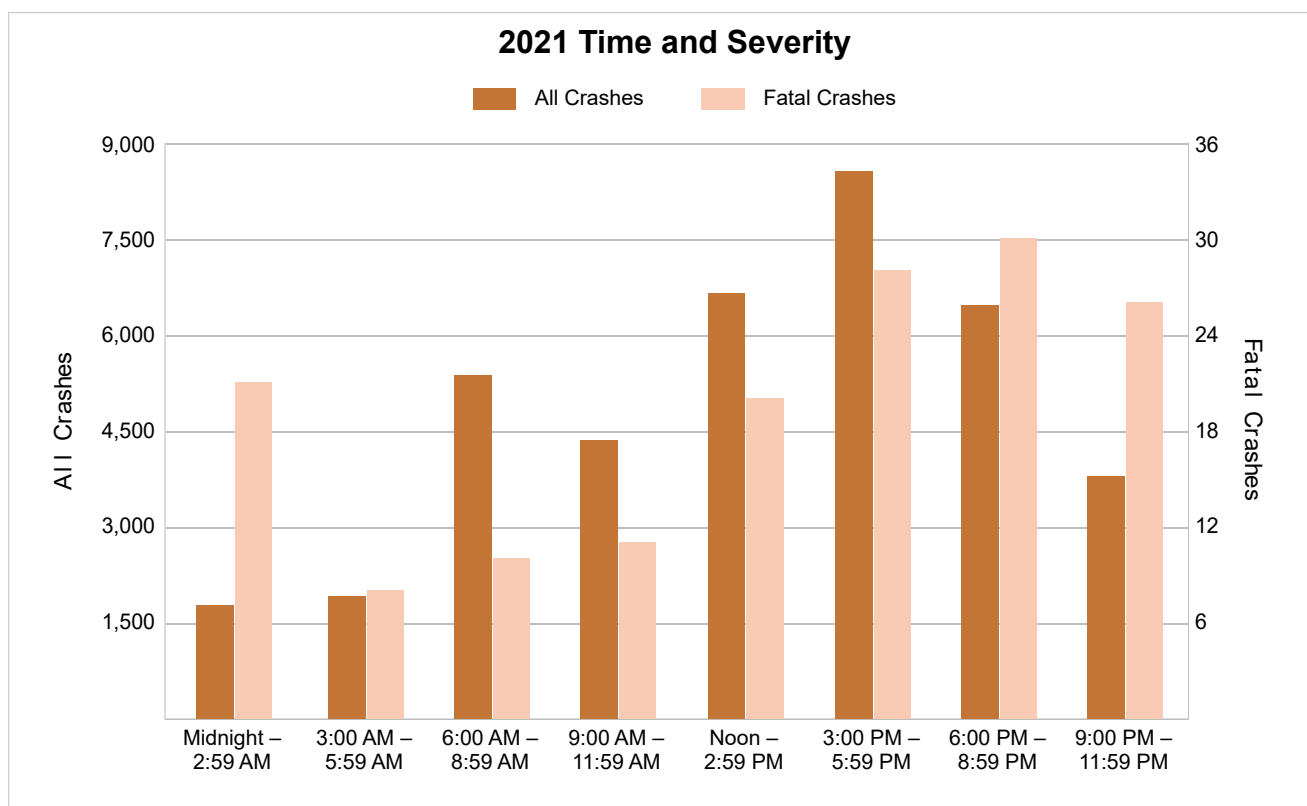
Time of Day	2017		2018		2019		2020		2021	
	Total Crashes	Fatal Crashes	Total Crashes	Fatal Crashes	Total Crashes	Fatal Crashes	Total Crashes	Fatal Crashes	Total Crashes	Fatal Crashes
Midnight – 2:59 AM	1,936	7	1,926	8	1,925	14	1,773	12	1,775	21
3:00 AM – 5:59 AM	1,933	13	2,102	10	2,077	9	1,723	9	1,904	8
6:00 AM – 8:59 AM	6,743	15	7,497	15	7,533	15	4,673	12	5,360	10
9:00 AM – 11:59 AM	5,292	18	5,472	14	5,482	11	3,752	11	4,349	11
Noon – 2:59 PM	7,198	22	6,945	23	7,113	20	5,446	23	6,636	20
3:00 PM – 5:59 PM	10,264 †	22	9,787 †	25	10,164 †	21	7,017 †	21	8,556 †	28
6:00 PM – 8:59 PM	6,810	24	6,785	21	7,147	16	6,181	26	6,458	30
9:00 PM – 11:59 PM	3,846	24	3,849	20	3,979	15	3,402	19	3,780	26
Unknown	33	0	38	0	49	0	21	0	24	0
<b>Total</b>	<b>44,055</b>	<b>145</b>	<b>44,401</b>	<b>136</b>	<b>45,469</b>	<b>121</b>	<b>33,988</b>	<b>133</b>	<b>38,842</b>	<b>154</b>

Note: † Indicates that the highest number of total crashes reported in the 5-year period occurred in the same time period.

5-Year Trend  
Crashes by Time of Day

5-Year Trend  
Fatal Crashes by Time of Day


## 2021 - Time and Severity

Time of Day	All Crashes		Fatal Crashes		Injury Crashes			PDO Crashes
	Number	% of Total	Number	% of Fatal	A	B	C	Number
Midnight – 2:59 AM	1,775	4.6	21	13.6	35	135	135	1,449
3:00 AM – 5:59 AM	1,904	4.9	8	5.2	23	81	125	1,667
6:00 AM – 8:59 AM	5,360	13.8	10	6.5	52	208	402	4,688
9:00 AM – 11:59 AM	4,349	11.2	11	7.1	65	259	456	3,558
Noon – 2:59 PM	6,636	17.1	20	13.0	111	431	730	5,344
3:00 PM – 5:59 PM	8,556	22.0	28	18.2	168	556	905	6,899
6:00 PM – 8:59 PM	6,458	16.6	30	19.5	124	404	585	5,315
9:00 PM – 11:59 PM	3,780	9.7	26	16.9	81	219	323	3,131
Unknown	24	0.1	0	0.0	0	0	3	21
<b>Total</b>	<b>38,842</b>	<b>100.0</b>	<b>154</b>	<b>100.0</b>	<b>659</b>	<b>2,293</b>	<b>3,664</b>	<b>32,072</b>

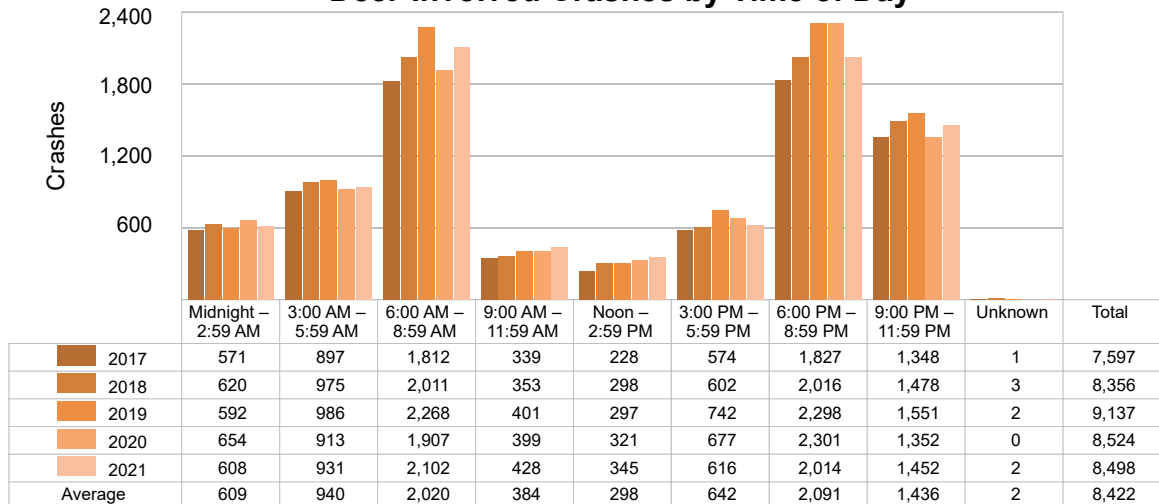




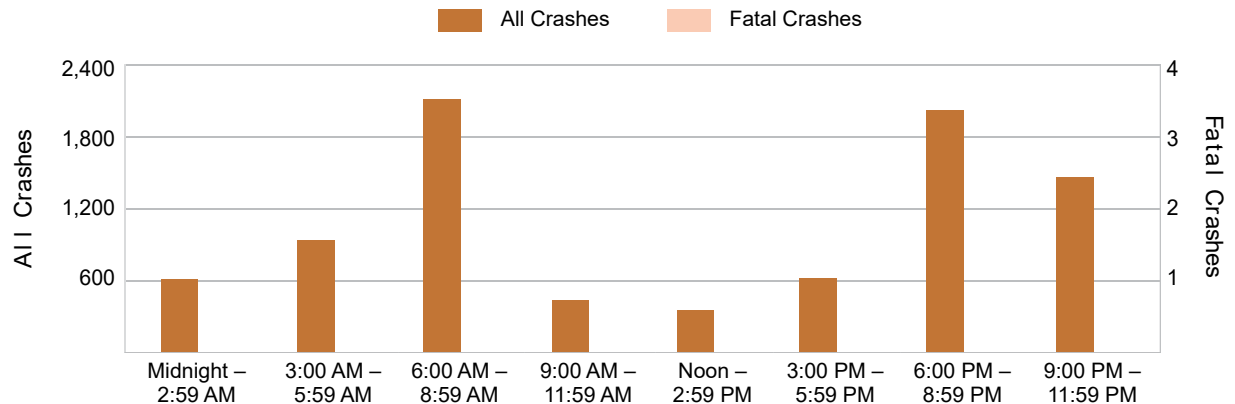
### 5-Year Trend - Deer-Involved Crashes by Time of Day

Time of Day	2017		2018		2019		2020		2021	
	Total Crashes	Fatal Crashes	Total Crashes	Fatal Crashes	Total Crashes	Fatal Crashes	Total Crashes	Fatal Crashes	Total Crashes	Fatal Crashes
Midnight – 2:59 AM	571	0	620	0	592	0	654	0	608	0
3:00 AM – 5:59 AM	897	1	975	0	986	0	913	0	931	0
6:00 AM – 8:59 AM	1,812	0	2,011	0	2,268	0	1,907	0	2,102	0
9:00 AM – 11:59 AM	339	0	353	0	401	0	399	1	428	0
Noon – 2:59 PM	228	0	298	1	297	0	321	0	345	0
3:00 PM – 5:59 PM	574	0	602	0	742	0	677	0	616	0
6:00 PM – 8:59 PM	1,827	0	2,016	0	2,298	0	2,301	0	2,014	0
9:00 PM – 11:59 PM	1,348	1	1,478	0	1,551	0	1,352	0	1,452	0
Unknown	1	0	3	0	2	0	0	0	2	0
<b>Total</b>	<b>7,597</b>	<b>2</b>	<b>8,356</b>	<b>1</b>	<b>9,137</b>	<b>0</b>	<b>8,524</b>	<b>1</b>	<b>8,498</b>	<b>0</b>

### 5-Year Trend Deer-Involved Crashes by Time of Day



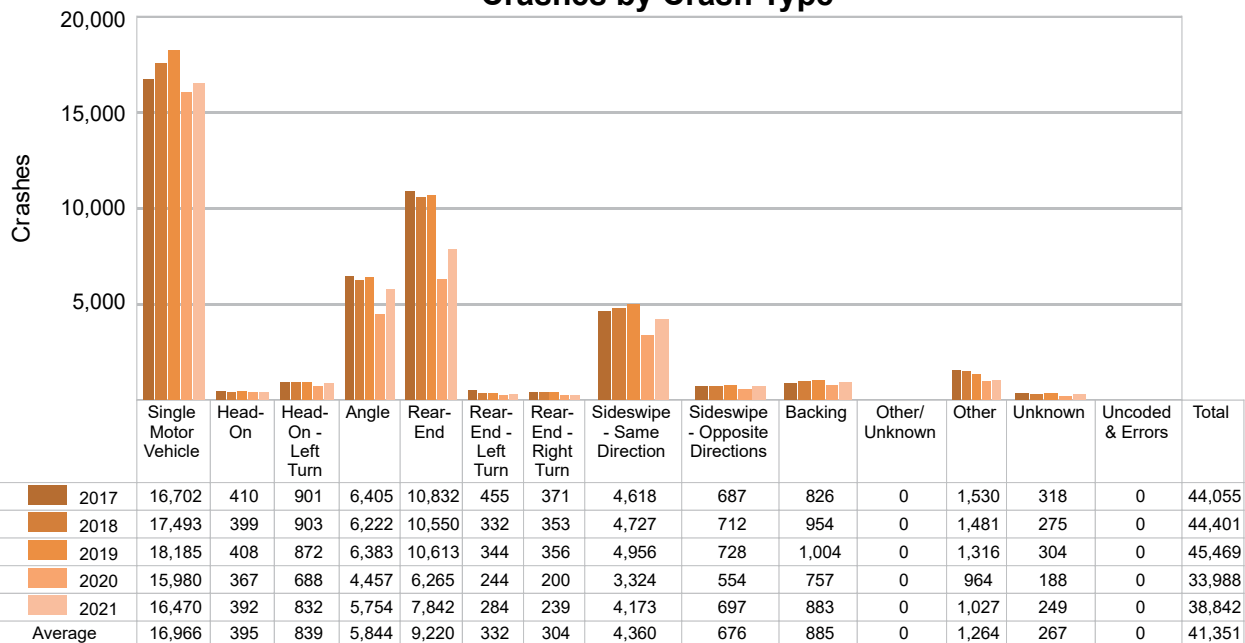
### 2021 Time and Severity of Deer-Involved Crashes



There were no fatal deer-involved crashes in MSP District 1 - Central in 2021.

## 5-Year Trend - Crashes by Crash Type

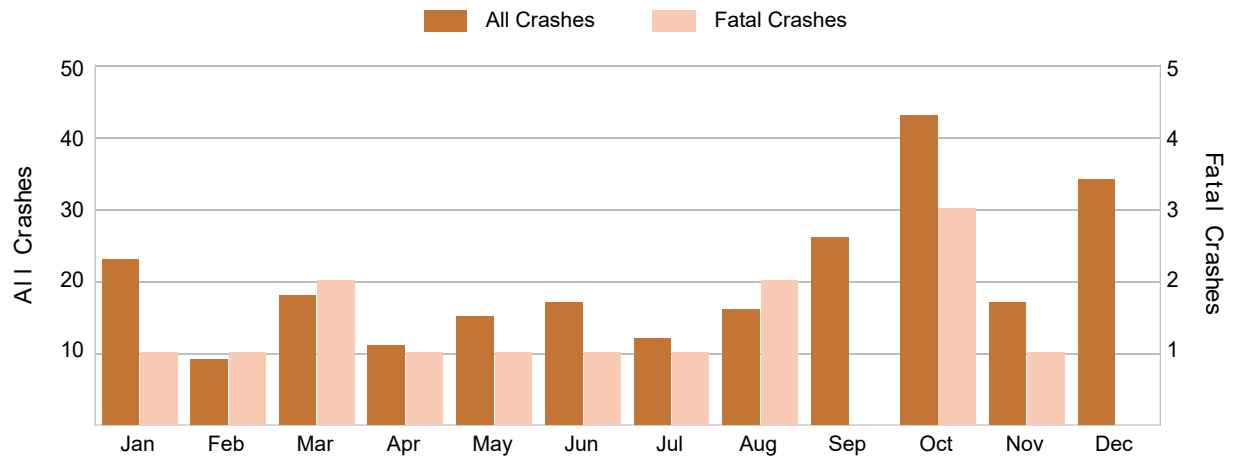
Crash Type	2017		2018		2019		2020		2021	
	Total Crashes	Fatal Crashes	Total Crashes	Fatal Crashes	Total Crashes	Fatal Crashes	Total Crashes	Fatal Crashes	Total Crashes	Fatal Crashes
Single Motor Vehicle	16,702	77	17,493	55	18,185	54	15,980	66	16,470	85
Head-On	410	14	399	19	408	22	367	18	392	19
Head-On - Left Turn	901	5	903	8	872	5	688	5	832	2
Angle	6,405	24	6,222	23	6,383	19	4,457	27	5,754	33
Rear-End	10,832	12	10,550	12	10,613	10	6,265	9	7,842	10
Rear-End - Left Turn	455	1	332	3	344	1	244	0	284	0
Rear-End - Right Turn	371	0	353	1	356	0	200	0	239	0
Sideswipe - Same Direction	4,618	6	4,727	2	4,956	3	3,324	3	4,173	1
Sideswipe - Opposite Directions	687	0	712	1	728	0	554	0	697	1
Backing	826	0	954	1	1,004	0	757	0	883	1
Other/Unknown	0	0	0	0	0	0	0	0	0	0
Other	1,530	6	1,481	11	1,316	7	964	5	1,027	2
Unknown	318	0	275	0	304	0	188	0	249	0
Uncoded & Errors	0	0	0	0	0	0	0	0	0	0
<b>Total</b>	<b>44,055</b>	<b>145</b>	<b>44,401</b>	<b>136</b>	<b>45,469</b>	<b>121</b>	<b>33,988</b>	<b>133</b>	<b>38,842</b>	<b>154</b>

5-Year Trend  
Crashes by Crash Type

5-Year Trend - Pedestrian-Involved Crashes by Month

Month	2017		2018		2019		2020		2021	
	Total Crashes	Fatal Crashes	Total Crashes	Fatal Crashes	Total Crashes	Fatal Crashes	Total Crashes	Fatal Crashes	Total Crashes	Fatal Crashes
January	33	2	28	1	32	0	30	3	23	1
February	29	2	22	0	24	0	21	1	9	1
March	25	3	24	3	32	1	14	1	18	2
April	31	7	26	2	19	2	9	0	11	1
May	27	2	13	1	16	1	5	1	15	1
June	23	0	23	0	13	0	27	2	17	1
July	11	1	22	2	24	1	14	1	12	1
August	19	2	19	0	16	1	15	1	16	2
September	27	1	24	2	32	1	19	2	26	0
October	41	2	30	1	36	2	17	2	43	3
November	47	2	38	2	32	0	26	3	17	1
December	24	0	22	0	33	2	12	3	34	0
<b>Total</b>	<b>337</b>	<b>24</b>	<b>291</b>	<b>14</b>	<b>309</b>	<b>11</b>	<b>209</b>	<b>20</b>	<b>241</b>	<b>14</b>

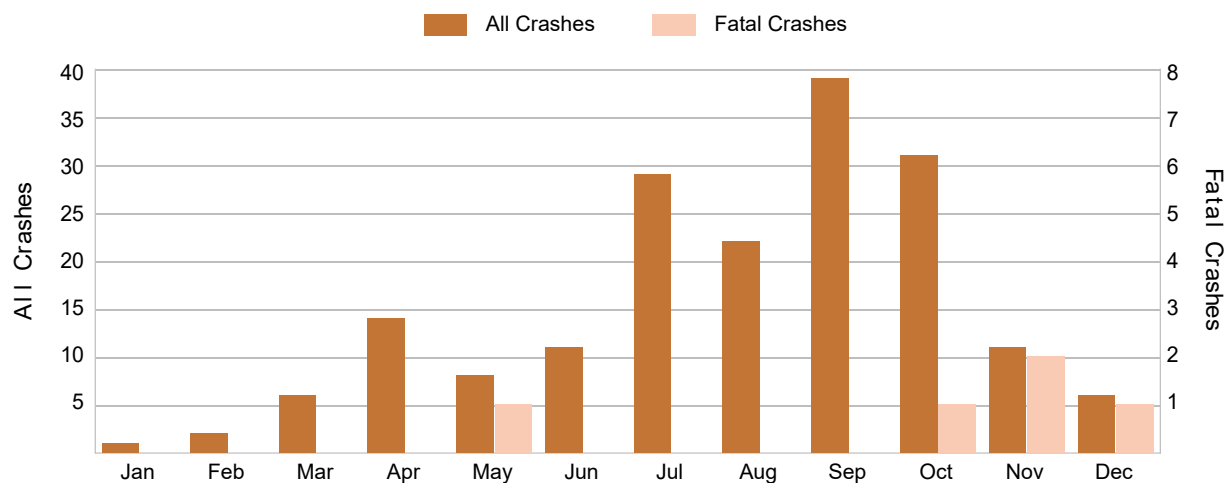
2021 Pedestrian-Involved Crashes by Month



## 5-Year Trend - Bicyclist-Involved Crashes by Month

Month	2017		2018		2019		2020		2021	
	Total Crashes	Fatal Crashes	Total Crashes	Fatal Crashes	Total Crashes	Fatal Crashes	Total Crashes	Fatal Crashes	Total Crashes	Fatal Crashes
January	14	2	7	0	9	0	5	0	1	0
February	14	0	6	0	3	0	8	0	2	0
March	9	0	14	0	10	0	5	1	6	0
April	23	0	10	1	14	1	6	0	14	0
May	25	1	27	1	15	0	8	0	8	1
June	23	0	23	2	39	0	15	1	11	0
July	25	0	24	0	29	1	26	0	29	0
August	28	1	27	0	22	1	28	2	22	0
September	44	0	38	0	51	0	20	0	39	0
October	41	0	33	0	39	0	14	0	31	1
November	21	0	20	0	9	0	12	1	11	2
December	8	0	7	0	7	0	9	2	6	1
<b>Total</b>	<b>275</b>	<b>4</b>	<b>236</b>	<b>4</b>	<b>247</b>	<b>3</b>	<b>156</b>	<b>7</b>	<b>180</b>	<b>5</b>

## 2021 Bicyclist-Involved Crashes by Month



## 2021 - Reported Motor Vehicle Crashes by County

County	Crashes												
	Total	Fatal	Injury	Property Damage	Inter-State	US Route	State Route	Local Street	Alcohol-Involved	Drug-Involved	Deer-Involved	Pedestrian-Involved	Bicyclist-Involved
Clinton	2,201	4	265	1,932	349	311	258	1,282	51	23	1,116	4	3
Eaton	2,787	12	470	2,305	462	0	1,017	1,306	93	41	720	14	10
Hillsdale	1,737	9	204	1,524	0	227	431	1,078	42	18	936	6	1
Ingham	7,887	30	1,603	6,254	1,233	324	1,879	4,442	256	67	976	66	58
Jackson	5,239	21	725	4,493	769	267	898	3,301	194	50	1,544	17	19
Lenawee	2,385	19	458	1,908	0	506	515	1,361	110	26	730	17	6
Livingston	4,389	12	658	3,719	724	464	588	2,611	181	62	948	20	7
Monroe	3,553	19	714	2,820	433	734	359	2,023	237	85	448	18	14
Washtenaw	8,664	28	1,519	7,117	1,177	1,358	821	5,266	291	129	1,080	79	62
<b>Total</b>	<b>38,842</b>	<b>154</b>	<b>6,616</b>	<b>32,072</b>	<b>5,147</b>	<b>4,191</b>	<b>6,766</b>	<b>22,670</b>	<b>1,455</b>	<b>501</b>	<b>8,498</b>	<b>241</b>	<b>180</b>

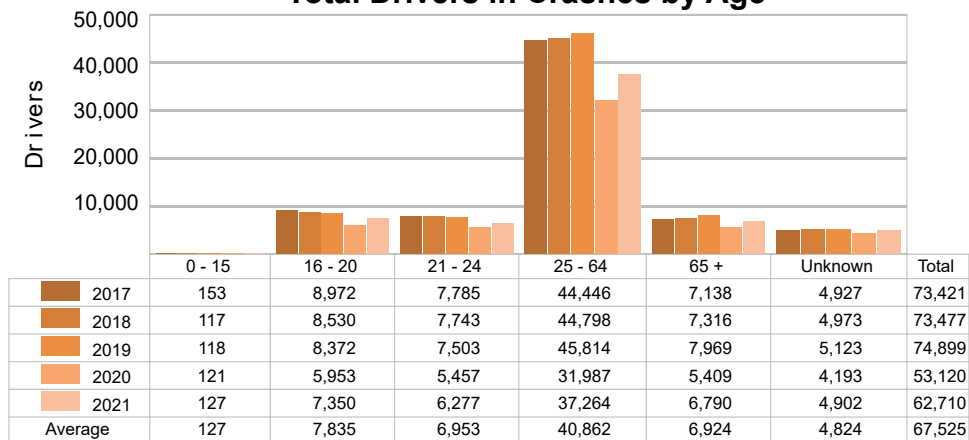
## 2021 - People in Reported Motor Vehicle Crashes by County

County	People					
	Fatalities	Suspected Serious Injuries	Suspected Minor Injuries	Possible Injuries	No Injuries	Uncoded & Errors
Clinton	4	70	221	273	2,867	79
Eaton	14	142	317	644	4,339	265
Hillsdale	11	59	168	200	2,105	75
Ingham	32	328	1,118	2,732	13,438	1,564
Jackson	21	163	457	1,018	7,619	591
Lenawee	20	145	433	486	3,362	268
Livingston	12	133	528	851	6,800	190
Monroe	21	229	524	910	5,431	564
Washtenaw	30	300	1,590	1,892	14,740	1,358
<b>Total</b>	<b>165</b>	<b>1,569</b>	<b>5,356</b>	<b>9,006</b>	<b>60,701</b>	<b>4,954</b>

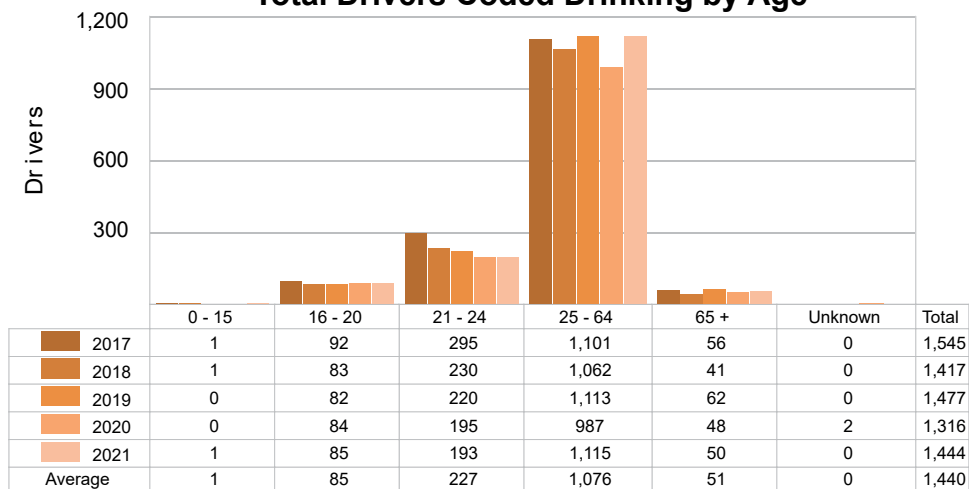
## 5-Year Trend - Drivers in Crashes Coded Drinking by Driver Age

Driver Age	2017		2018		2019		2020		2021	
	Total Drivers in Crashes	Total Drivers Coded Drinking	Total Drivers in Crashes	Total Drivers Coded Drinking	Total Drivers in Crashes	Total Drivers Coded Drinking	Total Drivers in Crashes	Total Drivers Coded Drinking	Total Drivers in Crashes	Total Drivers Coded Drinking
0 - 15	153	1	117	1	118	0	121	0	127	1
16 - 20	8,972	92	8,530	83	8,372	82	5,953	84	7,350	85
21 - 24	7,785	295	7,743	230	7,503	220	5,457	195	6,277	193
25 - 64	44,446	1,101	44,798	1,062	45,814	1,113	31,987	987	37,264	1,115
65 +	7,138	56	7,316	41	7,969	62	5,409	48	6,790	50
Unknown	4,927	0	4,973	0	5,123	0	4,193	2	4,902	0
<b>Total</b>	<b>73,421</b>	<b>1,545</b>	<b>73,477</b>	<b>1,417</b>	<b>74,899</b>	<b>1,477</b>	<b>53,120</b>	<b>1,316</b>	<b>62,710</b>	<b>1,444</b>

### 5-Year Trend Total Drivers in Crashes by Age



### 5-Year Trend Total Drivers Coded Drinking by Age



**2021 - Bodily Alcohol Concentration (BAC) Results Among All Vehicle Drivers in Alcohol-Involved Crashes by Age**

Age Group	Drivers				BAC Result Range for Drivers Coded Drinking				
	Total Drivers in Alcohol-Involved Crashes	Total Drivers Tested in all Crashes	Total Drivers Coded Drinking, Tested	Total Drivers Coded Drinking	BAC = 0.00	BAC 0.01 g/dL to 0.07 g/dL	BAC 0.08 g/dL to 0.16 g/dL	BAC 0.17 g/dL and Above	BAC Not Reported
0 - 15	1	3	1	1	0	0	0	0	1
16 - 20	139	115	74	85	0	15	22	17	31
21 - 24	260	204	162	193	1	25	42	39	86
25 - 64	1,464	1,191	918	1,115	3	90	188	274	560
65 +	92	76	46	50	0	6	11	10	23
Unknown	132	0	0	0	0	0	0	0	0
<b>Total</b>	<b>2,088</b>	<b>1,589</b>	<b>1,201</b>	<b>1,444</b>	<b>4</b>	<b>136</b>	<b>263</b>	<b>340</b>	<b>701</b>

Notes: BAC measured in grams (g) per deciliter (dL).

BAC may not be reported if drivers are not tested or if the results are not available immediately (as in the case of a blood test).

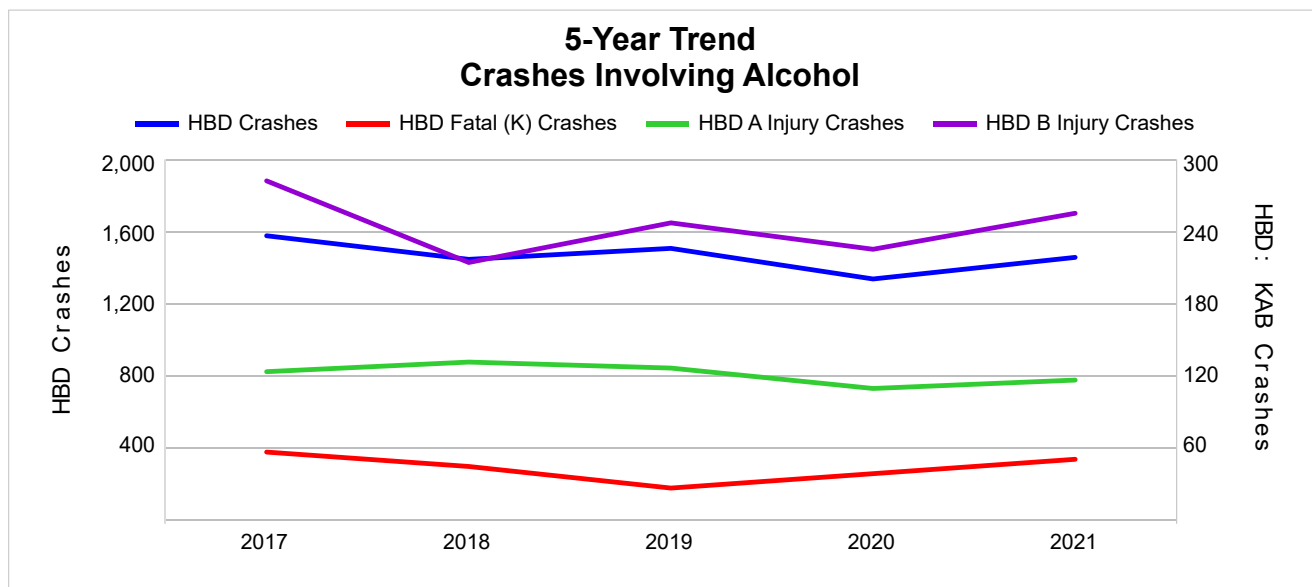
A driver may be coded by the officer as drinking even though no test is administered.

**5-Year Trend - Crashes Involving Alcohol**

Year	All Crashes	HBD Crashes	% HBD	Fatal Crashes	HBD Fatal Crashes	% HBD	A Injury Crashes	HBD A Injury Crashes	% HBD	B Injury Crashes	HBD B Injury Crashes	% HBD
2017	44,055	1,575	3.6	145	56	38.6	714	123	17.2	2,335	282	12.1
2018	44,401	1,444	3.3	136	44	32.4	678	131	19.3	2,232	214	9.6
2019	45,469	1,505	3.3	121	26	21.5	682	126	18.5	2,334	247	10.6
2020	33,988	1,335	3.9	133	38	28.6	584	109	18.7	1,855	225	12.1
2021	38,842	1,455	3.7	154 **	50	32.5	659	116	17.6	2,293	255	11.1

Note: \* Indicates that the most recent year is the lowest number or percentage reported in the 5-year period in that column.

\*\* Indicates that the most recent year is the highest number or percentage reported in the 5-year period in that column.



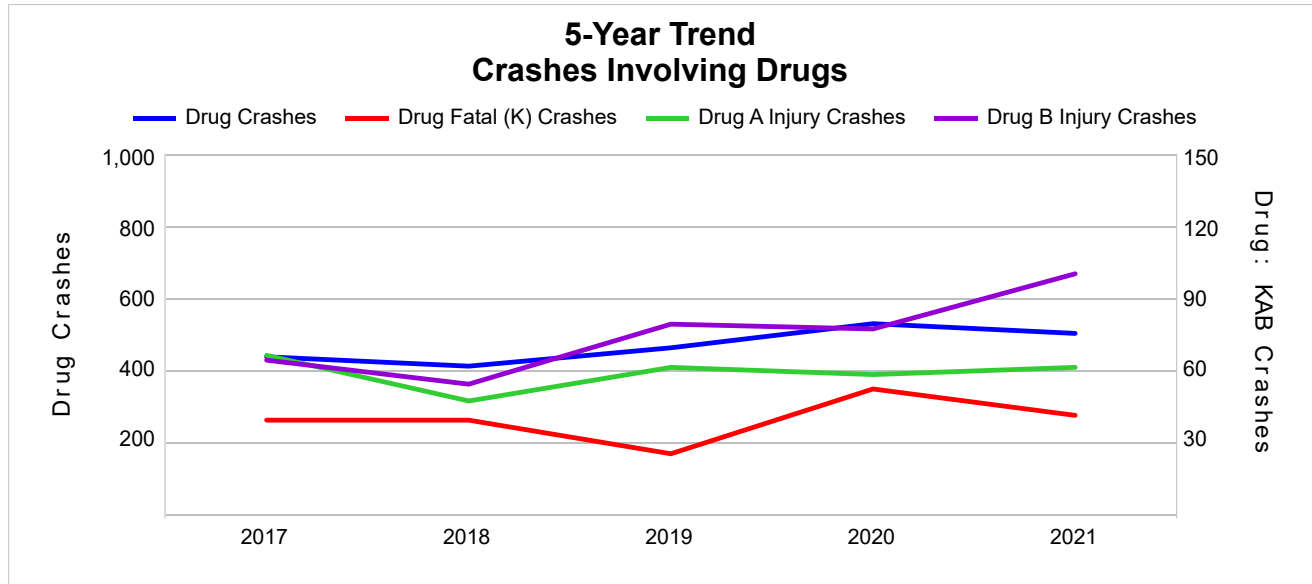
Note: Had-Been-Drinking (HBD)

## 5-Year Trend - Crashes Involving Drugs

Year	All Crashes	Drug Crashes	% Drug	Fatal Crashes	Drug Fatal Crashes	% Drug	A Injury Crashes	Drug A Injury Crashes	% Drug	B Injury Crashes	Drug B Injury Crashes	% Drug
2017	44,055	436	1.0	145	39	26.9	714	66	9.2	2,335	64	2.7
2018	44,401	410	0.9	136	39	28.7	678	47	6.9	2,232	54	2.4
2019	45,469	461	1.0	121	25	20.7	682	61	8.9	2,334	79	3.4
2020	33,988	528	1.6	133	52	39.1	584	58	9.9	1,855	77	4.2
2021	38,842	501	1.3	154 **	41	26.6	659	61	9.3	2,293	100 **	4.4 **

Note: \* Indicates that the most recent year is the lowest number or percentage reported in the 5-year period in that column.

\*\* Indicates that the most recent year is the highest number or percentage reported in the 5-year period in that column.



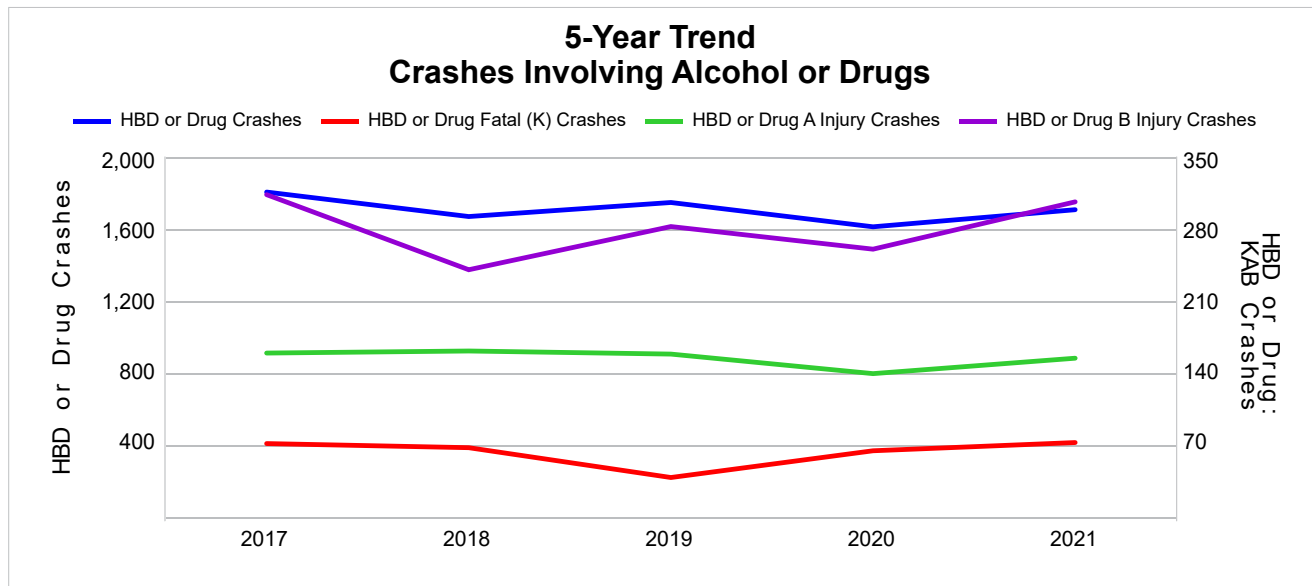


## 5-Year Trend - Crashes Involving Alcohol or Drugs

Year	All Crashes	HBD or Drug Crashes	% HBD or Drug	Fatal Crashes	HBD or Drug Fatal Crashes	% HBD or Drug	A Injury Crashes	HBD or Drug A Injury Crashes	% HBD or Drug	B Injury Crashes	HBD or Drug B Injury Crashes	% HBD or Drug
2017	44,055	1,803	4.1	145	71	49.0	714	159	22.3	2,335	313	13.4
2018	44,401	1,667	3.8	136	67	49.3	678	161	23.7	2,232	240	10.8
2019	45,469	1,745	3.8	121	38	31.4	682	158	23.2	2,334	282	12.1
2020	33,988	1,610	4.7	133	64	48.1	584	139	23.8	1,855	260	14.0
2021	38,842	1,705	4.4	154 **	72 **	46.8	659	154	23.4	2,293	306	13.3

Note: \* Indicates that the most recent year is the lowest number or percentage reported in the 5-year period in that column.

\*\* Indicates that the most recent year is the highest number or percentage reported in the 5-year period in that column.



Note: Had-Been-Drinking (HBD)

## 2021 - Restraints Worn Among Vehicle Drivers and Injured Passengers by Vehicle Type

Vehicle Type	Total Occupants			Fatalities			A - Suspected Serious			B - Suspected Minor			C - Possible Injury			No Injury		
	Total	Used Restraint	%	Total	Used Restraint	%	Total	Used Restraint	%	Total	Used Restraint	%	Total	Used Restraint	%	Total	Used Restraint	%
Passenger Car, SUV, Van	51,747	47,096	91.0	90	61	67.8	520	398	76.5	2,202	1,984	90.1	4,514	4,246	94.1	41,627	40,407	97.1
Motor Home	249	226	90.8	0	0	0.0	3	2	66.7	7	6	85.7	23	22	95.7	209	196	93.8
Pickup Truck	7,759	6,959	89.7	25	7	28.0	60	45	75.0	280	240	85.7	457	419	91.7	6,489	6,248	96.3
Small Truck Under 10,000 lbs. GVWR	330	288	87.3	0	0	0.0	0	0	0.0	11	10	90.9	14	12	85.7	276	266	96.4
Motorcycle	506	294	58.1	24	12	50.0	120	53	44.2	168	107	63.7	78	56	71.8	102	66	64.7
Moped/Goped	69	19	27.5	0	0	0.0	10	0	0.0	25	10	40.0	23	6	26.1	10	3	30.0
Go-Cart/Golf Cart	11	2	18.2	0	0	0.0	1	0	0.0	5	1	20.0	4	1	25.0	0	0	0.0
Snowmobile	2	0	0.0	0	0	0.0	1	0	0.0	0	0	0.0	0	0	0.0	1	0	0.0
Off-Road Vehicle (ORV)/ All-Terrain Vehicle (ATV)	31	8	25.8	1	0	0.0	6	2	33.3	8	2	25.0	2	0	0.0	12	4	33.3
Other (non-registered farm equipment, construction equipment, snow plows, etc.)	265	188	70.9	1	0	0.0	1	0	0.0	7	3	42.9	23	12	52.2	208	173	83.2
Truck/Bus (over 10,000 lbs. GVWR/8+ occupants/hazmat placard)	2,198	1,996	90.8	5	1	20.0	13	11	84.6	36	32	88.9	73	57	78.1	1,966	1,895	96.4
Uncoded & Errors	1,513	1	0.1	0	0	0.0	0	0	0.0	0	0	0.0	0	0	0.0	7	1	14.3
<b>Total</b>	<b>64,680</b>	<b>57,077</b>	<b>88.2</b>	<b>146</b>	<b>81</b>	<b>55.5</b>	<b>735</b>	<b>511</b>	<b>69.5</b>	<b>2,749</b>	<b>2,395</b>	<b>87.1</b>	<b>5,211</b>	<b>4,831</b>	<b>92.7</b>	<b>50,907</b>	<b>49,259</b>	<b>96.8</b>

Note: Restraint Use includes shoulder belt only used, lap belt only used, both lap and shoulder belts used, child restraint used, restraint failure, and helmet worn.

## 2021 - Restraints Worn Among Vehicle Drivers and Injured Passengers by Age

Age Group	Total Occupants			Fatalities			A - Suspected Serious			B - Suspected Minor			C - Possible Injury			No Injury		
	Total	Used Restraint	%	Total	Used Restraint	%	Total	Used Restraint	%	Total	Used Restraint	%	Total	Used Restraint	%	Total	Used Restraint	%
0 - 15	650	550	84.6	5	1	20.0	30	22	73.3	124	96	77.4	382	336	88.0	107	95	88.8
16 - 20	7,649	7,338	95.9	18	12	66.7	79	57	72.2	351	304	86.6	626	573	91.5	6,566	6,392	97.3
21 - 24	6,451	6,150	95.3	10	3	30.0	66	45	68.2	339	287	84.7	520	484	93.1	5,496	5,331	97.0
25 - 64	38,028	36,271	95.4	82	40	48.8	463	306	66.1	1,524	1,323	86.8	3,047	2,831	92.9	32,809	31,771	96.8
65 +	7,000	6,765	96.6	31	25	80.6	97	81	83.5	409	384	93.9	636	607	95.4	5,818	5,668	97.4
Unknown	4,902	3	0.1	0	0	0.0	0	0	0.0	2	1	50.0	0	0	0.0	111	2	1.8
<b>Total</b>	<b>64,680</b>	<b>57,077</b>	<b>88.2</b>	<b>146</b>	<b>81</b>	<b>55.5</b>	<b>735</b>	<b>511</b>	<b>69.5</b>	<b>2,749</b>	<b>2,395</b>	<b>87.1</b>	<b>5,211</b>	<b>4,831</b>	<b>92.7</b>	<b>50,907</b>	<b>49,259</b>	<b>96.8</b>

Note: Restraint Use includes shoulder belt only used, lap belt only used, both lap and shoulder belts used, child restraint used, restraint failure, and helmet worn.

## 5-Year Trend - Restraint Use Among Drivers

Restraint Use	2017			2018			2019			2020			2021		
	Drivers	Fatal Drivers	Injured Drivers	Drivers	Fatal Drivers	Injured Drivers	Drivers	Fatal Drivers	Injured Drivers	Drivers	Fatal Drivers	Injured Drivers	Drivers	Fatal Drivers	Injured Drivers
No Belts Available	117	0	17	121	1	20	118	0	11	104	0	23	116	1	29
Shoulder Belt Only Used	234	0	38	219	0	30	200	1	20	170	0	22	193	0	21
Lap Belt Only Used	141	0	16	122	1	20	147	0	14	90	0	12	96	0	10
Both Lap & Shoulder Belt Used	65,436	49	6,605	65,434	51	6,513	66,748	37	6,487	46,396	41	4,822	54,793	54	5,816
No Belts Used	387	24	159	372	23	154	420	21	214	366	25	199	383	30	196
Child Restraint Used - Forward Facing	2	0	0	0	0	0	0	0	0	0	0	0	0	0	0
Child Restraint Not Used, Unavailable or Improper Use	0	0	0	0	0	0	0	0	0	0	0	0	0	0	0
Child Restraint Used - Rear Facing	1	0	0	0	0	0	0	0	0	0	0	0	0	0	0
Child Restraint Used - Booster Seat	6	0	0	0	0	0	2	0	0	0	0	0	0	0	0
Restraint Failure	13	0	5	13	0	1	16	0	2	3	0	0	8	0	1
Restraint Use Unknown	5,343	7	230	5,563	7	234	5,597	8	212	4,650	13	194	5,707	9	284
Helmet Worn	317	14	227	294	16	211	309	10	235	291	7	218	297	12	214
Helmet Not Worn	199	11	152	186	8	138	201	8	150	199	14	151	217	11	172
Helmet Use Unknown	25	1	15	19	1	10	16	5	6	22	0	13	27	2	9
Uncoded & Errors	1,200	0	1	1,134	0	0	1,125	0	0	829	0	0	873	0	0
<b>Total</b>	<b>73,421</b>	<b>106</b>	<b>7,465</b>	<b>73,477</b>	<b>108</b>	<b>7,331</b>	<b>74,899</b>	<b>90</b>	<b>7,351</b>	<b>53,120</b>	<b>100</b>	<b>5,654</b>	<b>62,710</b>	<b>119</b>	<b>6,752</b>

## 5-Year Trend - Restraint Use Among Drivers Coded Drinking

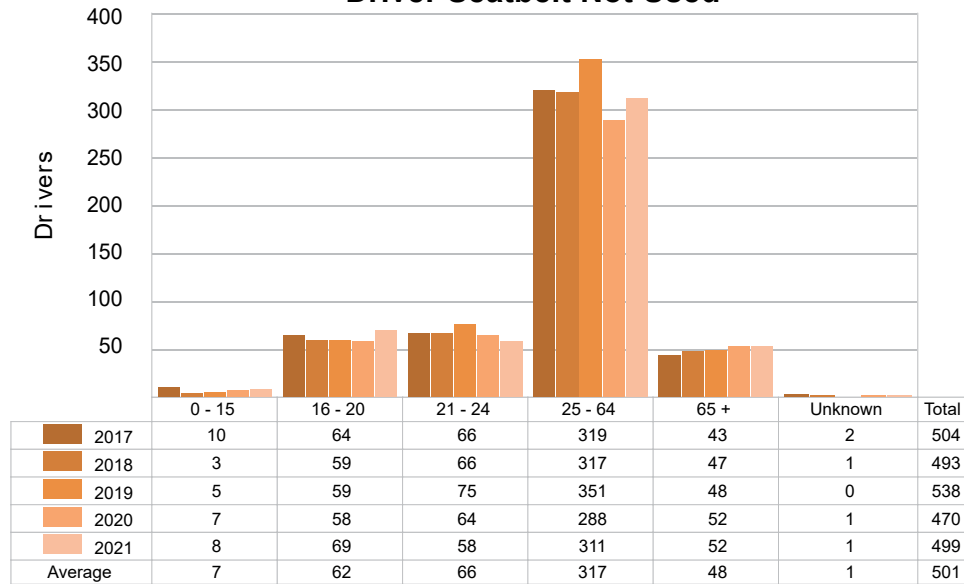
Restraint Use	2017			2018			2019			2020			2021		
	Drivers	Fatal Drivers	Injured Drivers	Drivers	Fatal Drivers	Injured Drivers	Drivers	Fatal Drivers	Injured Drivers	Drivers	Fatal Drivers	Injured Drivers	Drivers	Fatal Drivers	Injured Drivers
No Belts Available	1	0	0	4	0	1	3	0	2	2	0	0	6	1	3
Shoulder Belt Only Used	2	0	1	7	0	2	6	0	0	3	0	1	4	0	0
Lap Belt Only Used	3	0	2	1	0	0	3	0	2	3	0	3	5	0	3
Both Lap & Shoulder Belt Used	1,122	9	369	1,050	9	341	1,083	2	319	976	10	336	1,035	5	358
No Belts Used	98	12	54	81	9	47	112	6	77	79	7	63	83	14	50
Child Restraint Used - Forward Facing	0	0	0	0	0	0	0	0	0	0	0	0	0	0	0
Child Restraint Not Used, Unavailable or Improper Use	0	0	0	0	0	0	0	0	0	0	0	0	0	0	0
Child Restraint Used - Rear Facing	0	0	0	0	0	0	0	0	0	0	0	0	0	0	0
Child Restraint Used - Booster Seat	1	0	0	0	0	0	0	0	0	0	0	0	0	0	0
Restraint Failure	0	0	0	1	0	1	0	0	0	0	0	0	1	0	0
Restraint Use Unknown	279	5	89	238	3	80	227	3	80	225	3	68	261	3	76
Helmet Worn	12	3	9	13	4	8	11	1	8	9	0	9	14	3	9
Helmet Not Worn	25	4	21	20	5	15	31	4	25	17	5	9	34	4	28
Helmet Use Unknown	2	0	2	2	0	0	1	1	0	2	0	2	1	1	0
Uncoded & Errors	0	0	0	0	0	0	0	0	0	0	0	0	0	0	0
<b>Total</b>	<b>1,545</b>	<b>33</b>	<b>547</b>	<b>1,417</b>	<b>30</b>	<b>495</b>	<b>1,477</b>	<b>17</b>	<b>513</b>	<b>1,316</b>	<b>25</b>	<b>491</b>	<b>1,444</b>	<b>31</b>	<b>527</b>

## 5-Year Trend - Seatbelt Not Used Among Drivers by Age

Age Group	2017			2018			2019			2020			2021		
	Drivers	Fatal Drivers	Injured Drivers	Drivers	Fatal Drivers	Injured Drivers	Drivers	Fatal Drivers	Injured Drivers	Drivers	Fatal Drivers	Injured Drivers	Drivers	Fatal Drivers	Injured Drivers
0 - 15	10	0	4	3	0	0	5	0	0	7	0	4	8	0	5
16 - 20	64	1	26	59	0	24	59	4	26	58	0	33	69	3	32
21 - 24	66	5	28	66	4	24	75	3	40	64	1	30	58	4	32
25 - 64	319	16	109	317	15	113	351	11	145	288	16	136	311	21	127
65 +	43	2	9	47	5	13	48	3	14	52	8	19	52	3	29
Unknown	2	0	0	1	0	0	0	0	0	1	0	0	1	0	0
<b>Total</b>	<b>504</b>	<b>24</b>	<b>176</b>	<b>493</b>	<b>24</b>	<b>174</b>	<b>538</b>	<b>21</b>	<b>225</b>	<b>470</b>	<b>25</b>	<b>222</b>	<b>499</b>	<b>31</b>	<b>225</b>

Note: Seatbelt Not Used includes no belts available or no belts used.

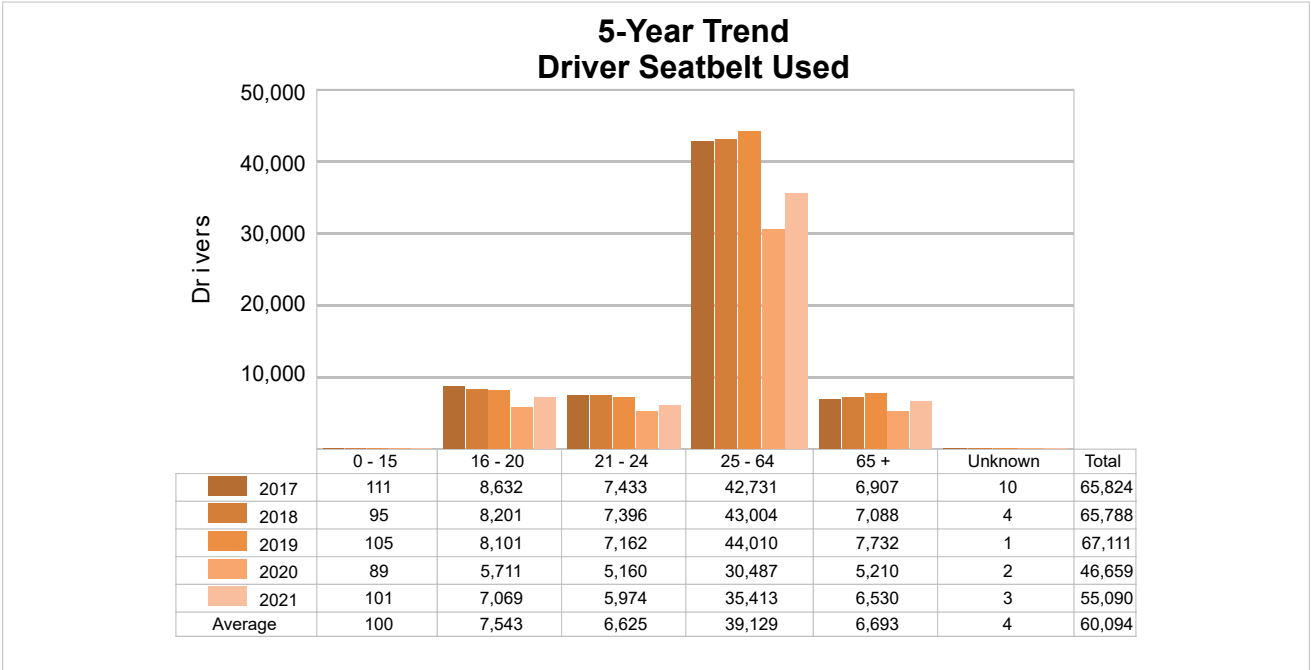
### 5-Year Trend Driver Seatbelt Not Used



5-Year Trend - Seatbelt Used Among Drivers by Age

Age Group	2017			2018			2019			2020			2021		
	Drivers	Fatal Drivers	Injured Drivers	Drivers	Fatal Drivers	Injured Drivers	Drivers	Fatal Drivers	Injured Drivers	Drivers	Fatal Drivers	Injured Drivers	Drivers	Fatal Drivers	Injured Drivers
0 - 15	111	0	13	95	0	6	105	0	10	89	0	13	101	1	6
16 - 20	8,632	2	905	8,201	7	847	8,101	2	779	5,711	3	570	7,069	7	676
21 - 24	7,433	3	753	7,396	6	675	7,162	1	642	5,160	3	535	5,974	2	651
25 - 64	42,731	32	4,212	43,004	27	4,190	44,010	20	4,203	30,487	21	3,120	35,413	23	3,668
65 +	6,907	12	781	7,088	12	845	7,732	15	889	5,210	14	618	6,530	21	846
Unknown	10	0	0	4	0	1	1	0	0	2	0	0	3	0	1
Total	65,824	49	6,664	65,788	52	6,564	67,111	38	6,523	46,659	41	4,856	55,090	54	5,848

Note: Seatbelt Used includes shoulder belt only used, lap belt only used, both lap and shoulder belts used, and restraint failure.



## 5-Year Trend - Drivers in Crashes by Hazardous Action

Hazardous Action	2017		2018		2019		2020		2021	
	Total Drivers in Crashes	Drivers in Fatal Crashes	Total Drivers in Crashes	Drivers in Fatal Crashes	Total Drivers in Crashes	Drivers in Fatal Crashes	Total Drivers in Crashes	Drivers in Fatal Crashes	Total Drivers in Crashes	Drivers in Fatal Crashes
None	37,378	108	37,971	102	38,838	77	28,027	89	32,948	93
Speed Too Fast	4,746	25	5,054	29	4,897	21	3,412	22	3,451	29
Speed Too Slow	33	0	41	0	34	0	19	0	21	0
Failed to Yield	6,838	19	6,733	18	6,788	16	4,524	19	5,917	14
Disregard Traffic Control	1,251	7	1,262	7	1,276	5	1,082	8	1,331	9
Drove Wrong Way	42	2	47	2	37	0	36	1	42	1
Drove Left of Center	303	7	347	12	330	11	288	9	322	7
Improper Passing	368	3	365	0	386	3	273	1	354	1
Improper Lane Use	1,681	2	1,662	1	1,856	2	1,223	1	1,630	2
Improper Turn	679	2	690	0	758	1	572	0	655	1
Improper/No Signal	90	0	96	0	63	0	59	0	73	0
Improper Backing	1,066	0	987	0	1,029	0	713	0	817	0
Unable to Stop in Assured Clear Distance	10,313	9	9,854	6	10,022	6	5,750	6	7,162	6
Other	1,944	8	1,966	13	1,906	14	1,505	7	1,692	12
Unknown	2,853	18	2,869	20	2,966	24	2,402	23	3,119	30
Reckless Driving	410	13	324	10	389	7	424	13	469	19
Careless/Negligent Driving	2,223	13	2,038	20	2,155	13	1,974	16	1,869	18
Uncoded & Errors	1,203	0	1,171	3	1,169	8	837	0	838	0
<b>Total</b>	<b>73,421</b>	<b>236</b>	<b>73,477</b>	<b>243</b>	<b>74,899</b>	<b>208</b>	<b>53,120</b>	<b>215</b>	<b>62,710</b>	<b>242</b>

### Office of Highway Safety Planning

---

Physical Address:  
7150 Harris Drive  
Dimondale, Michigan 48821

Mailing Address:  
P.O. Box 30634  
Lansing, Michigan 48909

Find us on the web:  
[MichiganTrafficCrashFacts.org](http://MichiganTrafficCrashFacts.org)  
[mtcf-info@umich.edu](mailto:mtcf-info@umich.edu)

