



2021

**MTCF**  
Michigan Traffic  
Crash Facts

# Michigan Traffic Crash Facts

## Reporting Criteria

Please pay particular attention to the wording when interpreting the three levels of data gathered for this report.

### Crash

The Crash Level analyzes data related to crash events and returns one result per crash.

Examples: Time, weather, and location.

### Units

The Units Level analyzes the experience of the units in the crash and returns one result per vehicle, driver, pedestrian, bicyclist, or train.

Examples: Vehicle type, driver condition, and unit events.

### People

The People Level analyzes the experience of the people involved in the crash and returns one result per occupant/person/party.

Examples: Age, injury severity, and seat belt or helmet use.

### **KABCO Injury Indicator:**

K = Killed

A = Suspected Serious Injury

B = Suspected Minor Injury

C = Possible Injury

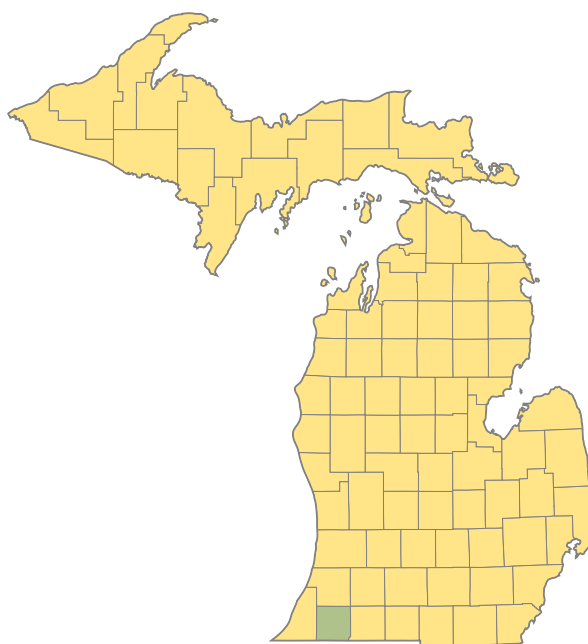
O = No Injury

Property Damage Only (PDO)



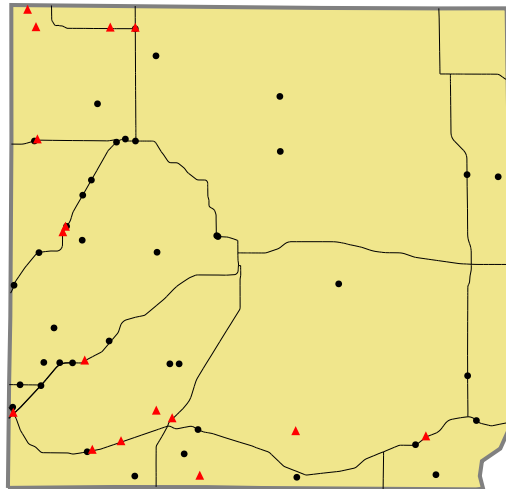
## Cass County

### 2021 Traffic Crash Data & 2017-2021 5-Year Trends



#### Sources:

The crashes in this report occurred on public roadways in Michigan and resulted in injuries, fatalities, or property damage (with \$1,000 as a reporting threshold). The information was gathered from Michigan Traffic Crash Report Forms (UD-10) submitted by local police departments, sheriff's offices, and the Michigan State Police. Other related information was obtained from the departments of Transportation, State, and Community Health.



Crashes by most severe injury (mapped/actual)  
 ▲ K - Fatal (16/16)  
 ● A - Suspected Serious (40/40)

### 2021 - Crashes and Injury by Month

Month	Crashes				People	
	Total	Fatal	Injury	Property Damage Only (PDO)	Fatalities	Injuries
January	178	3	12	163	3	18
February	141	1	14	126	1	16
March	98	2	10	86	2	11
April	105	1	19	85	1	24
May	110	0	18	92	0	26
June	127	0	23	104	0	29
July	123	1	25	97	1	42
August	95	2	17	76	2	31
September	120	1	24	95	1	29
October	168	3	17	148	3	28
November	199	1	20	178	1	30
December	161	1	20	140	2	31
<b>Total</b>	<b>1,625</b>	<b>16</b>	<b>219</b>	<b>1,390</b>	<b>17</b>	<b>315</b>

### 2021 - Driver Statistics

Age Group	Cass County			Driver Rates	
	2019 Population*	Licensed Drivers	Drivers in Crashes	Per 10k Population	Per 10k Licensed
0 - 15	9,374	214	2	2.1	93.5
16 - 20	3,023	2,186	231	764.1	1,056.7
21 - 24	2,261	1,919	206	911.1	1,073.5
25 - 64	25,980	23,338	1,369	526.9	586.6
65 +	11,149	10,644	254	227.8	238.6
Unknown	0	0	82	--	--
<b>Total</b>	<b>51,787</b>	<b>38,301</b>	<b>2,144</b>	<b>414.0</b>	<b>559.8</b>

\*2021 Population of Michigan Counties (by single-year of age) not yet available from U.S. Census Bureau.

### 2021 - Vehicles in Crashes

Vehicle Type	Motor Vehicles		Fatal Crashes		Injury Crashes	PDO Crashes
	Number of Vehicles	% of Total	Number	% of Total	Number	Number
Passenger Car, SUV, Van	1,626	75.8	18	69.2	253	1,355
Motor Home	12	0.6	0	0.0	0	12
Pickup Truck	385	18.0	7	26.9	64	314
Small Truck Under 10,000 lbs. GVWR	14	0.7	0	0.0	0	14
Motorcycle	22	1.0	0	0.0	20	2
Moped/Goped	0	0.0	0	0.0	0	0
Go-Cart/Golf Cart	0	0.0	0	0.0	0	0
Snowmobile	0	0.0	0	0.0	0	0
Off-Road Vehicle (ORV)/All-Terrain Vehicle (ATV)	1	0.0	0	0.0	0	1
Other (non-registered farm equipment, construction equipment, snow plows, etc.)	9	0.4	0	0.0	4	5
Truck/Bus (over 10,000 lbs. GVWR/8+ occupants/hazmat placard)	50	2.3	1	3.8	5	44
Uncoded & Errors	25	1.2	0	0.0	1	24
<b>Total</b>	<b>2,144</b>	<b>100.0</b>	<b>26</b>	<b>100.0</b>	<b>347</b>	<b>1,771</b>

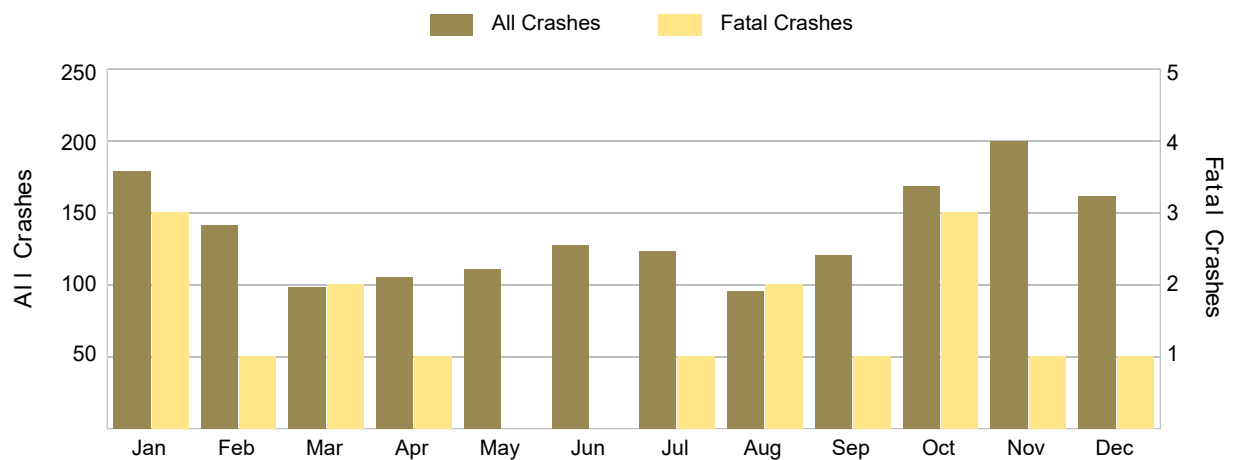
## 5-Year Trend - Crashes by Month

Month	2017		2018		2019		2020		2021	
	Total Crashes	Fatal Crashes	Total Crashes	Fatal Crashes	Total Crashes	Fatal Crashes	Total Crashes	Fatal Crashes	Total Crashes	Fatal Crashes
January	137	2	141	1	201	2	149	0	178	3
February	74	2	123	0	135	2	171	0	141	1
March	100	0	115	0	95	0	76	0	98	2
April	90	0	105	2	91	0	65	0	105	1
May	110	0	93	0	81	0	95	1	110	0
June	120	1	103	1	91	0	125	2	127	0
July	91	1	112	1	139	2	93	0	123	1
August	106	1	96	0	94	0	113	3	95	2
September	96	1	120	2	119	1	105	1	120	1
October	135	0	148	1	156	0	149	0	168	3
November	145	3	227	0	208	1	176	2	199	1
December	227	2	134	0	146	0	122	0	161	1
<b>Total</b>	<b>1,431</b>	<b>13</b>	<b>1,517</b>	<b>8</b>	<b>1,556</b>	<b>8</b>	<b>1,439</b>	<b>9</b>	<b>1,625</b>	<b>16</b>

## 5-Year Trend - Crashes by Day of Week

Day	2017		2018		2019		2020		2021	
	Total Crashes	Fatal Crashes	Total Crashes	Fatal Crashes	Total Crashes	Fatal Crashes	Total Crashes	Fatal Crashes	Total Crashes	Fatal Crashes
Monday	196	1	248	3	235	2	210	3	246	4
Tuesday	218	1	195	0	265	1	195	0	239	1
Wednesday	199	3	228	0	244	0	245	2	222	0
Thursday	216	0	234	2	234	0	183	1	241	2
Friday	242	3	252	2	232	2	247	0	289	7
Saturday	187	2	200	0	168	2	211	2	217	0
Sunday	173	3	160	1	178	1	148	1	171	2
<b>Total</b>	<b>1,431</b>	<b>13</b>	<b>1,517</b>	<b>8</b>	<b>1,556</b>	<b>8</b>	<b>1,439</b>	<b>9</b>	<b>1,625</b>	<b>16</b>

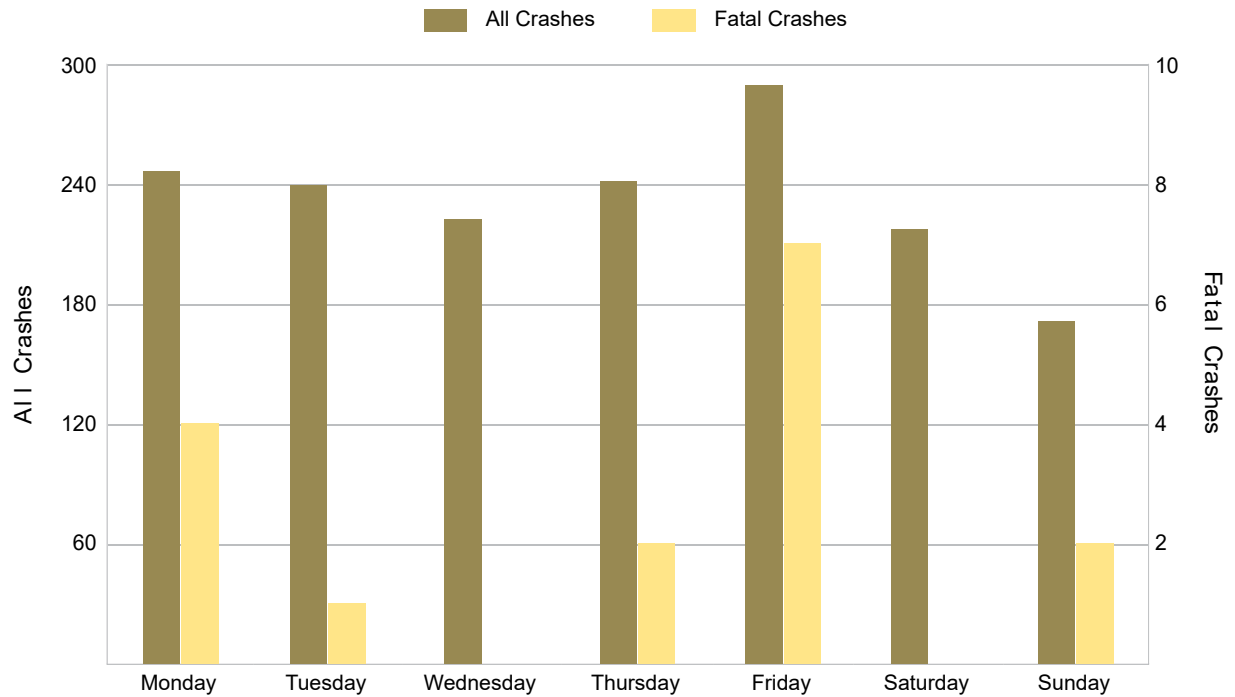
## 2021 Crashes by Month



## 2021 - Crashes by Day of Week

Day	All Crashes		Fatal Crashes		Injury Crashes			PDO Crashes
	Number	% of Total	Fatal	% of Fatal	A	B	C	Number
Monday	246	15.1	4	25.0	9	8	16	209
Tuesday	239	14.7	1	6.3	3	11	24	200
Wednesday	222	13.7	0	0.0	5	8	12	197
Thursday	241	14.8	2	12.5	4	8	14	213
Friday	289	17.8	7	43.8	7	9	13	253
Saturday	217	13.4	0	0.0	5	12	23	177
Sunday	171	10.5	2	12.5	7	6	15	141
<b>Total</b>	<b>1,625</b>	<b>100.0</b>	<b>16</b>	<b>100.0</b>	<b>40</b>	<b>62</b>	<b>117</b>	<b>1,390</b>

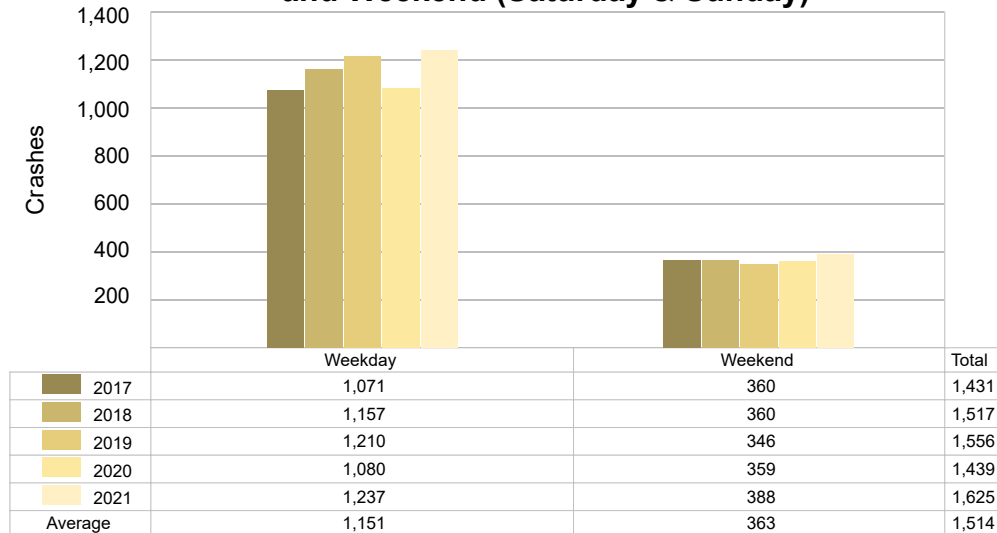
## 2021 Day of Week and Severity



## 5-Year Trend - Crashes by Weekday and Weekend

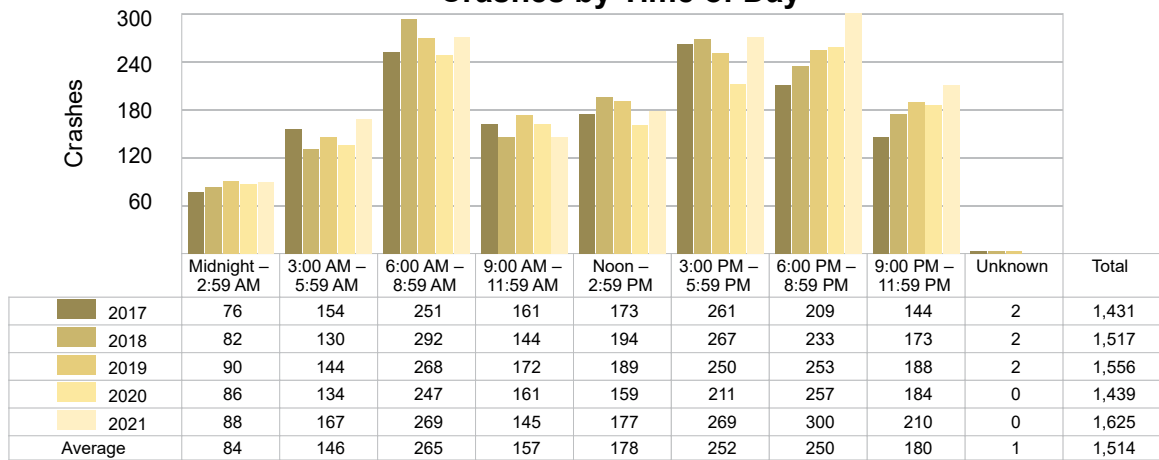
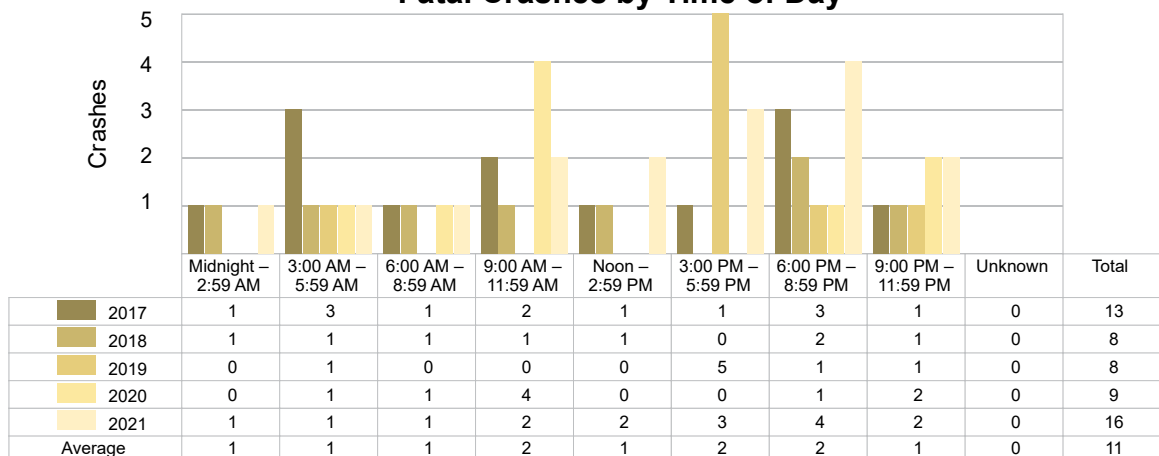
Portion of Week	2017		2018		2019		2020		2021	
	Total Crashes	Fatal Crashes	Total Crashes	Fatal Crashes	Total Crashes	Fatal Crashes	Total Crashes	Fatal Crashes	Total Crashes	Fatal Crashes
Weekday	1,071	8	1,157	7	1,210	5	1,080	6	1,237	14
Weekend	360	5	360	1	346	3	359	3	388	2
<b>Total</b>	<b>1,431</b>	<b>13</b>	<b>1,517</b>	<b>8</b>	<b>1,556</b>	<b>8</b>	<b>1,439</b>	<b>9</b>	<b>1,625</b>	<b>16</b>

## 5-Year Crash Trends by Weekday (Monday - Friday) and Weekend (Saturday & Sunday)



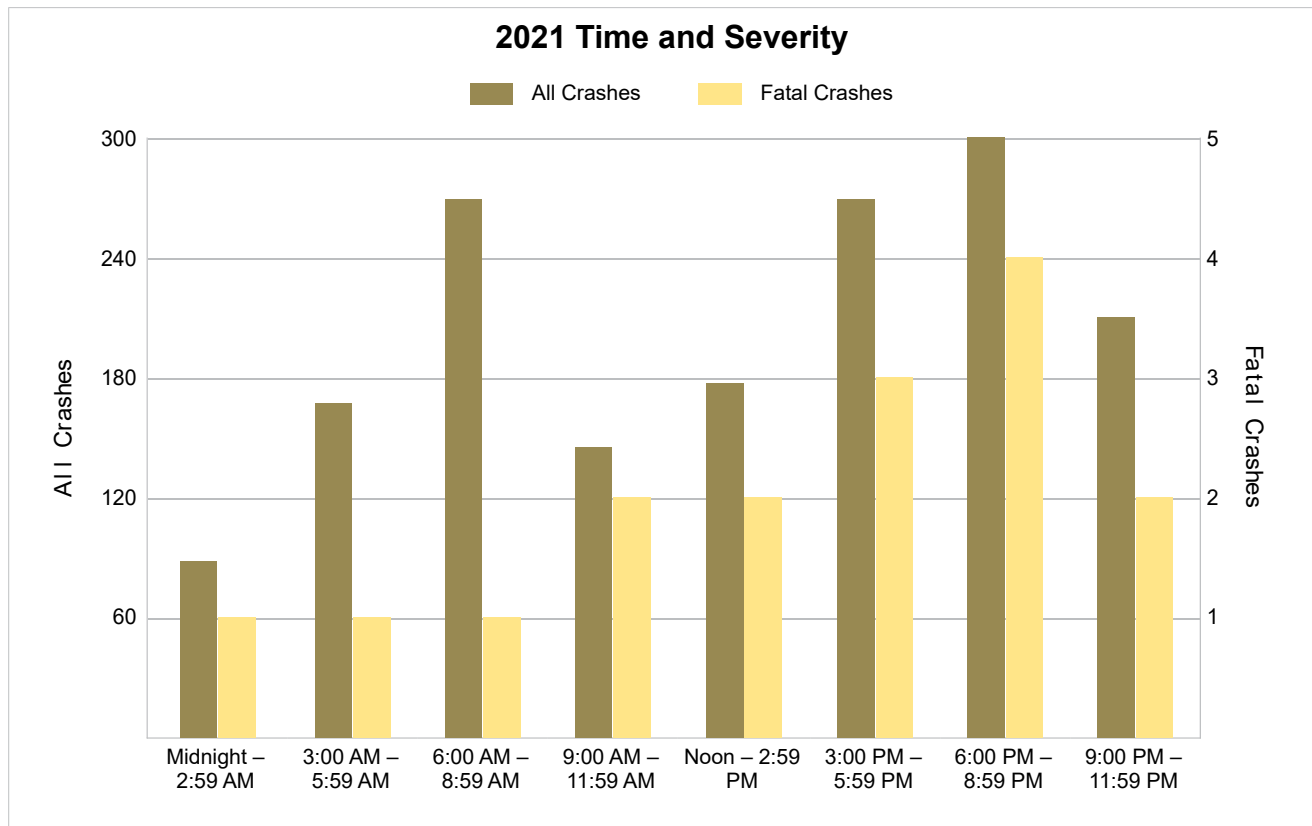
## 5-Year Trend - Crashes by Time of Day

Time of Day	2017		2018		2019		2020		2021	
	Total Crashes	Fatal Crashes	Total Crashes	Fatal Crashes	Total Crashes	Fatal Crashes	Total Crashes	Fatal Crashes	Total Crashes	Fatal Crashes
Midnight – 2:59 AM	76	1	82	1	90	0	86	0	88	1
3:00 AM – 5:59 AM	154	3	130	1	144	1	134	1	167	1
6:00 AM – 8:59 AM	251	1	292	1	268	0	247	1	269	1
9:00 AM – 11:59 AM	161	2	144	1	172	0	161	4	145	2
Noon – 2:59 PM	173	1	194	1	189	0	159	0	177	2
3:00 PM – 5:59 PM	261	1	267	0	250	5	211	0	269	3
6:00 PM – 8:59 PM	209	3	233	2	253	1	257	1	300	4
9:00 PM – 11:59 PM	144	1	173	1	188	1	184	2	210	2
Unknown	2	0	2	0	2	0	0	0	0	0
<b>Total</b>	<b>1,431</b>	<b>13</b>	<b>1,517</b>	<b>8</b>	<b>1,556</b>	<b>8</b>	<b>1,439</b>	<b>9</b>	<b>1,625</b>	<b>16</b>

5-Year Trend  
Crashes by Time of Day5-Year Trend  
Fatal Crashes by Time of Day

## 2021 - Time and Severity

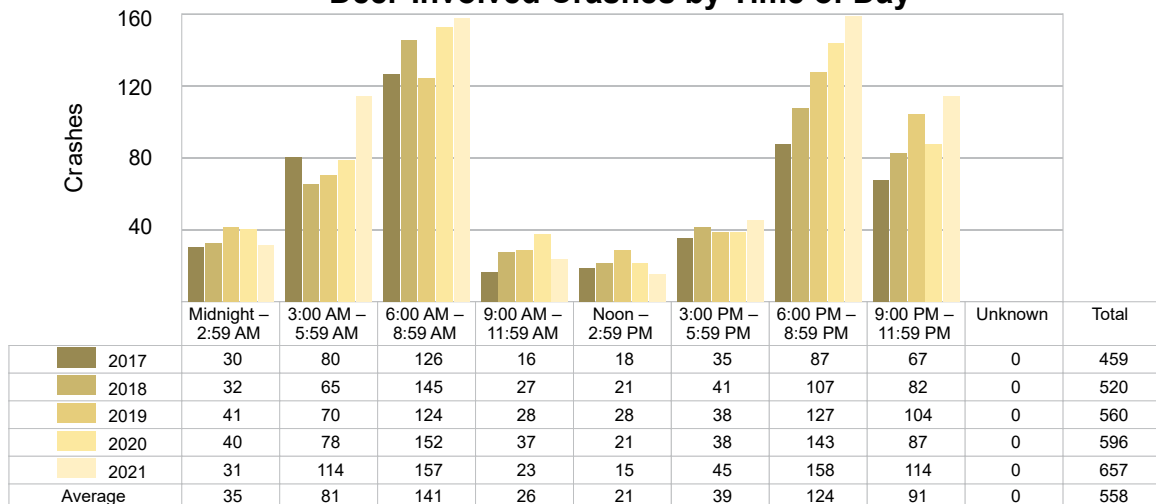
Time of Day	All Crashes		Fatal Crashes		Injury Crashes			PDO Crashes
	Number	% of Total	Number	% of Fatal	A	B	C	Number
Midnight – 2:59 AM	88	5.4	1	6.3	6	2	4	75
3:00 AM – 5:59 AM	167	10.3	1	6.3	1	3	12	150
6:00 AM – 8:59 AM	269	16.6	1	6.3	4	4	14	246
9:00 AM – 11:59 AM	145	8.9	2	12.5	1	8	13	121
Noon – 2:59 PM	177	10.9	2	12.5	7	11	24	133
3:00 PM – 5:59 PM	269	16.6	3	18.8	10	12	26	218
6:00 PM – 8:59 PM	300	18.5	4	25.0	7	14	13	262
9:00 PM – 11:59 PM	210	12.9	2	12.5	4	8	11	185
Unknown	0	0.0	0	0.0	0	0	0	0
<b>Total</b>	<b>1,625</b>	<b>100.0</b>	<b>16</b>	<b>100.0</b>	<b>40</b>	<b>62</b>	<b>117</b>	<b>1,390</b>



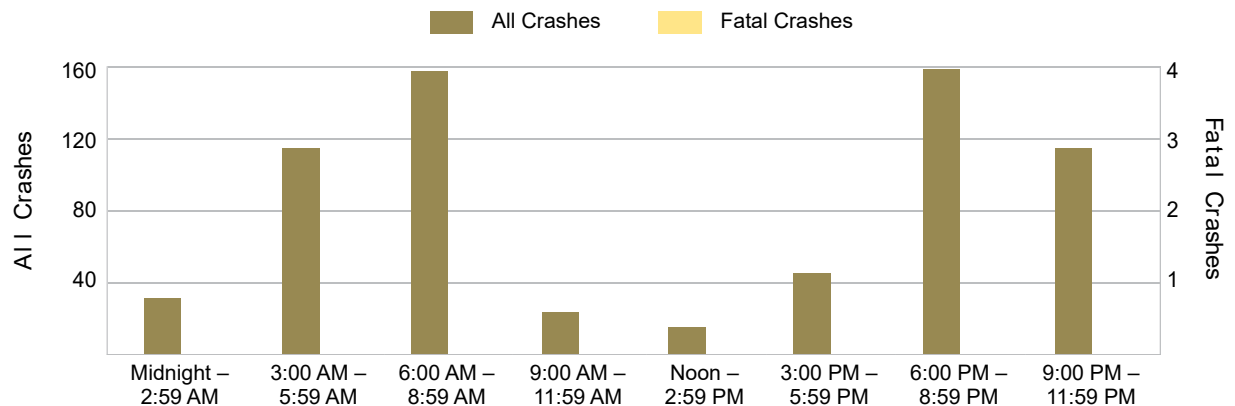
## 5-Year Trend - Deer-Involved Crashes by Time of Day

Time of Day	2017		2018		2019		2020		2021	
	Total Crashes	Fatal Crashes	Total Crashes	Fatal Crashes	Total Crashes	Fatal Crashes	Total Crashes	Fatal Crashes	Total Crashes	Fatal Crashes
Midnight – 2:59 AM	30	0	32	0	41	0	40	0	31	0
3:00 AM – 5:59 AM	80	0	65	0	70	0	78	0	114	0
6:00 AM – 8:59 AM	126	0	145	0	124	0	152	0	157	0
9:00 AM – 11:59 AM	16	0	27	0	28	0	37	0	23	0
Noon – 2:59 PM	18	0	21	0	28	0	21	0	15	0
3:00 PM – 5:59 PM	35	0	41	0	38	0	38	0	45	0
6:00 PM – 8:59 PM	87	0	107	0	127	0	143	0	158	0
9:00 PM – 11:59 PM	67	0	82	0	104	0	87	0	114	0
Unknown	0	0	0	0	0	0	0	0	0	0
<b>Total</b>	<b>459</b>	<b>0</b>	<b>520</b>	<b>0</b>	<b>560</b>	<b>0</b>	<b>596</b>	<b>0</b>	<b>657</b>	<b>0</b>

### 5-Year Trend Deer-Involved Crashes by Time of Day



### 2021 Time and Severity of Deer-Involved Crashes



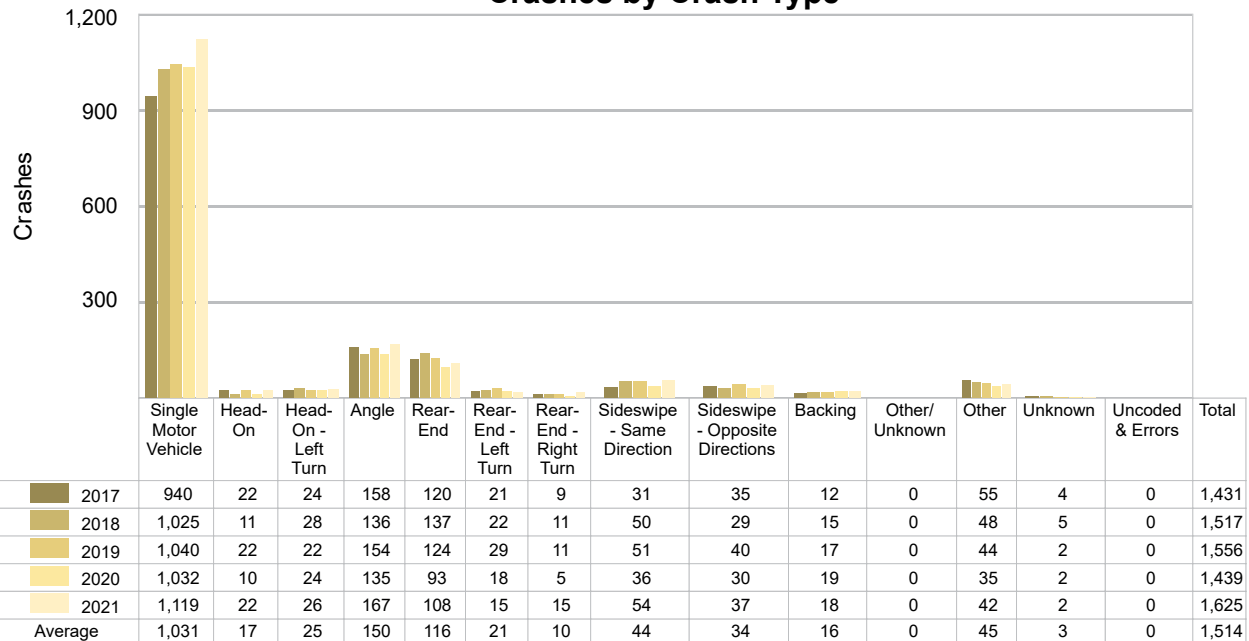
There were no fatal deer-involved crashes in Cass County in 2021.



## 5-Year Trend - Crashes by Crash Type

Crash Type	2017		2018		2019		2020		2021	
	Total Crashes	Fatal Crashes	Total Crashes	Fatal Crashes	Total Crashes	Fatal Crashes	Total Crashes	Fatal Crashes	Total Crashes	Fatal Crashes
Single Motor Vehicle	940	8	1,025	5	1,040	4	1,032	7	1,119	7
Head-On	22	2	11	2	22	1	10	0	22	7
Head-On - Left Turn	24	0	28	0	22	0	24	0	26	0
Angle	158	1	136	1	154	2	135	2	167	1
Rear-End	120	1	137	0	124	0	93	0	108	0
Rear-End - Left Turn	21	0	22	0	29	0	18	0	15	0
Rear-End - Right Turn	9	0	11	0	11	0	5	0	15	0
Sideswipe - Same Direction	31	0	50	0	51	0	36	0	54	1
Sideswipe - Opposite Directions	35	0	29	0	40	0	30	0	37	0
Backing	12	0	15	0	17	0	19	0	18	0
Other/Unknown	0	0	0	0	0	0	0	0	0	0
Other	55	1	48	0	44	1	35	0	42	0
Unknown	4	0	5	0	2	0	2	0	2	0
Uncoded & Errors	0	0	0	0	0	0	0	0	0	0
<b>Total</b>	<b>1,431</b>	<b>13</b>	<b>1,517</b>	<b>8</b>	<b>1,556</b>	<b>8</b>	<b>1,439</b>	<b>9</b>	<b>1,625</b>	<b>16</b>

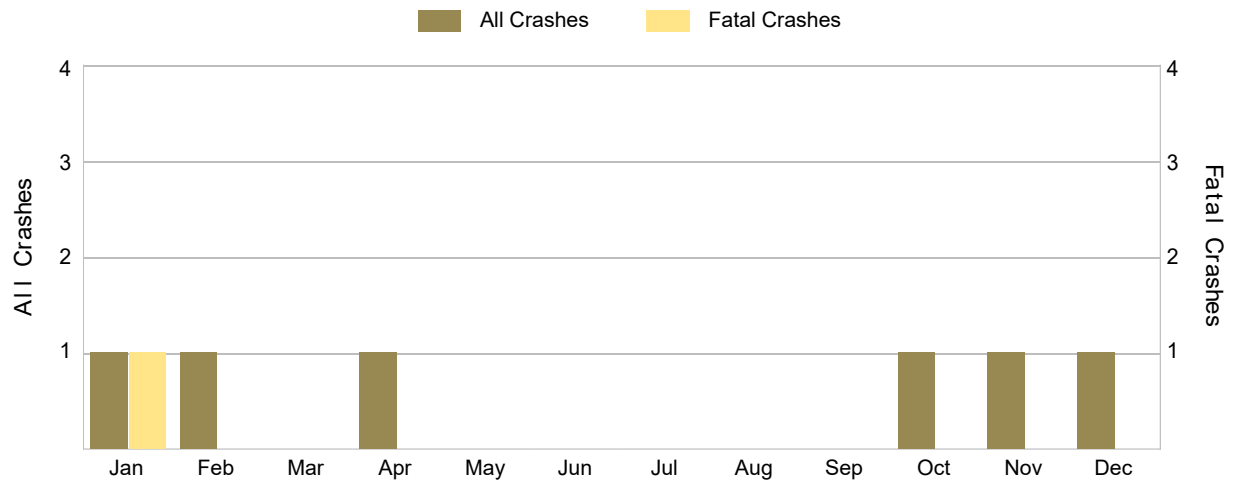
## 5-Year Trend Crashes by Crash Type



## 5-Year Trend - Pedestrian-Involved Crashes by Month

Month	2017		2018		2019		2020		2021	
	Total Crashes	Fatal Crashes	Total Crashes	Fatal Crashes	Total Crashes	Fatal Crashes	Total Crashes	Fatal Crashes	Total Crashes	Fatal Crashes
January	1	0	0	0	1	0	1	0	1	1
February	0	0	0	0	1	1	0	0	1	0
March	0	0	0	0	1	0	0	0	0	0
April	0	0	1	0	1	0	1	0	1	0
May	1	0	1	0	0	0	0	0	0	0
June	1	0	0	0	0	0	0	0	0	0
July	0	0	1	1	0	0	0	0	0	0
August	1	1	1	0	1	0	0	0	0	0
September	0	0	0	0	1	0	1	0	0	0
October	1	0	0	0	0	0	0	0	1	0
November	1	1	0	0	0	0	1	1	1	0
December	0	0	0	0	0	0	0	0	1	0
<b>Total</b>	<b>6</b>	<b>2</b>	<b>4</b>	<b>1</b>	<b>6</b>	<b>1</b>	<b>4</b>	<b>1</b>	<b>6</b>	<b>1</b>

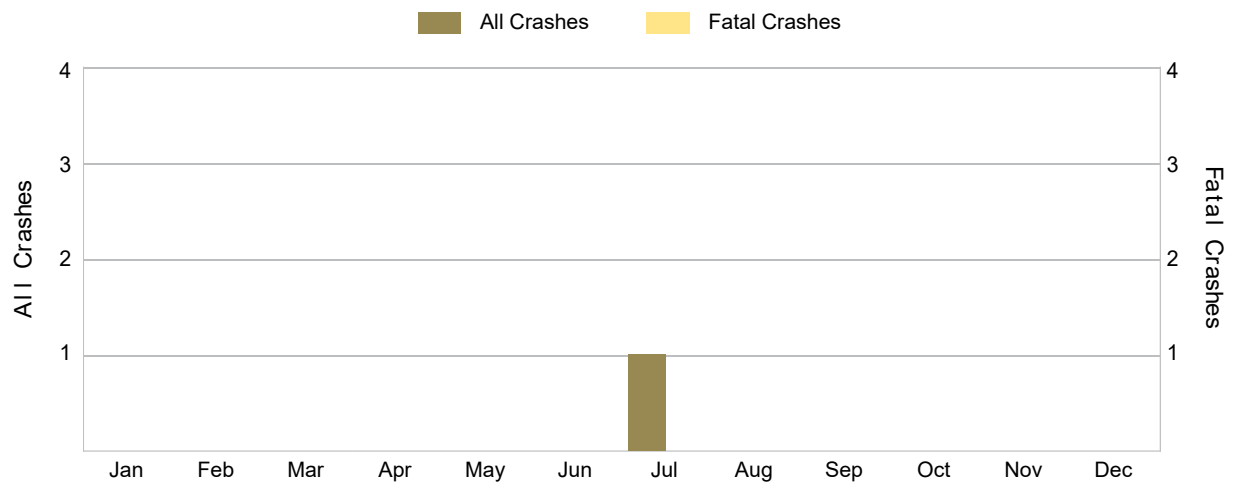
## 2021 Pedestrian-Involved Crashes by Month



## 5-Year Trend - Bicyclist-Involved Crashes by Month

Month	2017		2018		2019		2020		2021	
	Total Crashes	Fatal Crashes	Total Crashes	Fatal Crashes	Total Crashes	Fatal Crashes	Total Crashes	Fatal Crashes	Total Crashes	Fatal Crashes
January	0	0	0	0	0	0	1	0	0	0
February	0	0	0	0	0	0	0	0	0	0
March	0	0	0	0	0	0	0	0	0	0
April	1	0	0	0	1	0	0	0	0	0
May	0	0	0	0	0	0	0	0	0	0
June	0	0	0	0	1	0	0	0	0	0
July	0	0	1	0	1	0	0	0	1	0
August	0	0	0	0	0	0	1	0	0	0
September	1	0	2	1	0	0	0	0	0	0
October	1	0	0	0	0	0	0	0	0	0
November	0	0	0	0	0	0	0	0	0	0
December	1	0	0	0	0	0	0	0	0	0
<b>Total</b>	<b>4</b>	<b>0</b>	<b>3</b>	<b>1</b>	<b>3</b>	<b>0</b>	<b>2</b>	<b>0</b>	<b>1</b>	<b>0</b>

## 2021 Bicyclist-Involved Crashes by Month



There were no fatal bicyclist-involved crashes in Cass County in 2021.

## 2021 - Reported Motor Vehicle Crashes by Municipality

Municipality	Crashes												
	Total	Fatal	Injury	Property Damage	Inter-State	US Route	State Route	Local Street	Alcohol-Involved	Drug-Involved	Deer-Involved	Pedestrian-Involved	Bicyclist-Involved
Calvin Twp.	64	0	5	59	0	0	0	64	2	0	42	0	0
Cassopolis	0	0	0	0	0	0	0	0	0	0	0	0	0
Dowagiac	97	0	14	83	0	0	51	46	5	1	3	1	0
Edwardsburg	0	0	0	0	0	0	0	0	0	0	0	0	0
Howard Twp.	145	1	26	118	0	0	74	71	12	3	59	1	0
Jefferson Twp.	134	0	13	121	0	0	64	70	7	2	63	0	0
LaGrange Twp.	133	0	18	115	0	0	61	72	2	1	67	0	0
Marcellus	0	0	0	0	0	0	0	0	0	0	0	0	0
Marcellus Twp.	62	0	2	60	0	0	34	28	3	0	34	0	0
Mason Twp.	84	1	11	72	0	37	0	47	6	1	29	0	1
Milton Twp.	194	3	30	161	0	55	13	126	8	3	58	1	0
Newberg Twp.	64	0	9	55	0	0	37	27	0	0	26	0	0
Niles	1	0	1	0	0	0	0	1	0	0	0	0	0
Ontwa Twp.	134	3	21	110	0	44	25	65	6	3	37	1	0
Penn Twp.	71	0	6	65	0	0	21	50	3	1	40	0	0
Pokagon Twp.	90	2	18	70	0	0	39	51	2	1	37	0	0
Porter Twp.	119	1	15	103	0	45	33	41	5	1	56	1	0
Silver Creek Twp.	80	5	13	62	0	0	32	48	8	4	40	1	0
Vandalia	0	0	0	0	0	0	0	0	0	0	0	0	0
Volinia Twp.	66	0	6	60	0	0	0	66	1	2	31	0	0
Wayne Twp.	87	0	11	76	0	0	24	63	2	1	35	0	0
<b>Total</b>	<b>1,625</b>	<b>16</b>	<b>219</b>	<b>1,390</b>	<b>0</b>	<b>181</b>	<b>508</b>	<b>936</b>	<b>72</b>	<b>24</b>	<b>657</b>	<b>6</b>	<b>1</b>

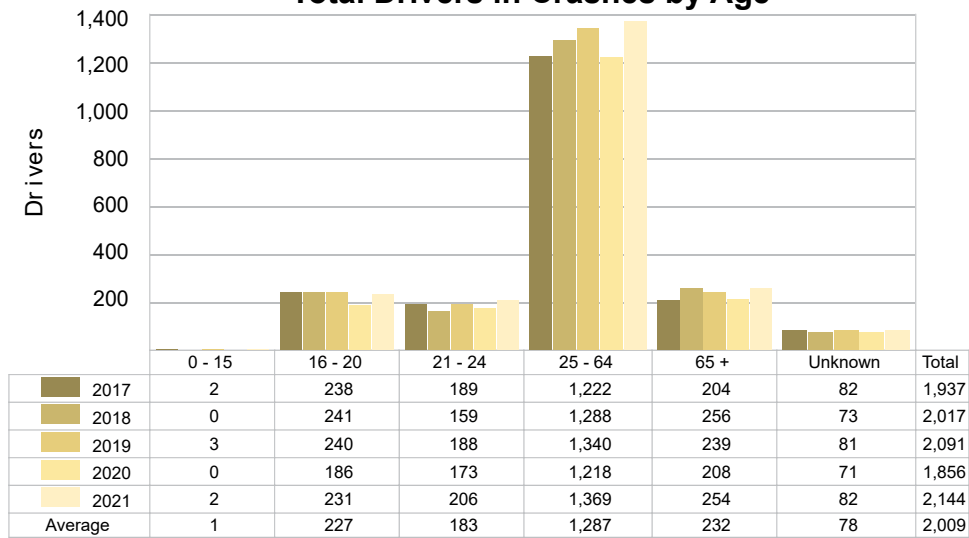
## 2021 - People in Reported Motor Vehicle Crashes by Municipality

Municipality	People					
	Fatalities	Suspected Serious Injuries	Suspected Minor Injuries	Possible Injuries	No Injuries	Uncoded & Errors
Calvin Twp.	0	1	7	6	79	1
Cassopolis	0	0	0	0	0	0
Dowagiac	0	5	13	13	187	17
Edwardsburg	0	0	0	0	0	0
Howard Twp.	2	17	13	24	191	12
Jefferson Twp.	0	2	8	17	176	6
LaGrange Twp.	0	7	19	17	178	3
Marcellus	0	0	0	0	0	0
Marcellus Twp.	0	0	0	3	88	3
Mason Twp.	1	2	18	9	129	8
Milton Twp.	3	2	21	38	299	7
Newberg Twp.	0	2	5	10	85	2
Niles	0	0	0	1	0	0
Ontwa Twp.	3	8	11	28	201	6
Penn Twp.	0	1	3	14	91	5
Pokagon Twp.	2	17	12	20	103	4
Porter Twp.	1	9	8	16	162	4
Silver Creek Twp.	5	10	6	12	86	2
Vandalia	0	0	0	0	0	0
Volinia Twp.	0	5	3	5	88	0
Wayne Twp.	0	1	3	19	108	5
<b>Total</b>	<b>17</b>	<b>89</b>	<b>150</b>	<b>252</b>	<b>2,251</b>	<b>85</b>

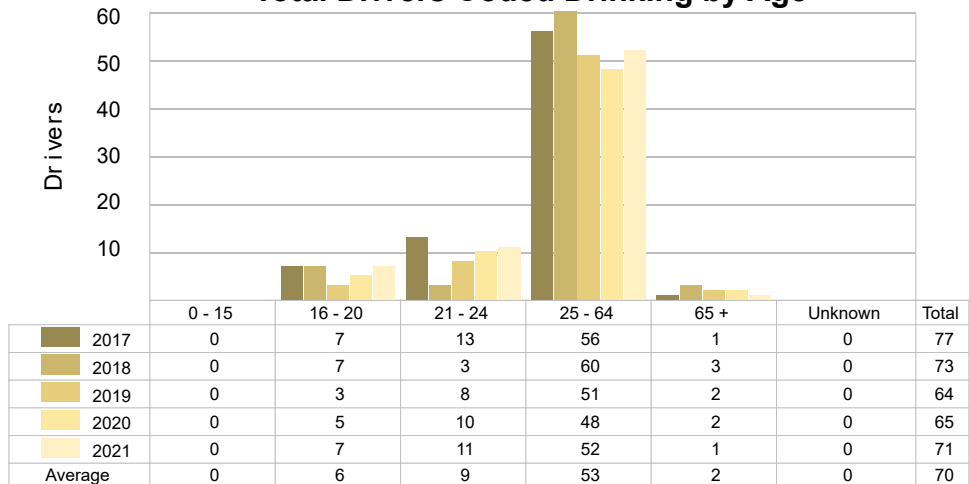
## 5-Year Trend - Drivers in Crashes Coded Drinking by Driver Age

Driver Age	2017		2018		2019		2020		2021	
	Total Drivers in Crashes	Total Drivers Coded Drinking	Total Drivers in Crashes	Total Drivers Coded Drinking	Total Drivers in Crashes	Total Drivers Coded Drinking	Total Drivers in Crashes	Total Drivers Coded Drinking	Total Drivers in Crashes	Total Drivers Coded Drinking
0 - 15	2	0	0	0	3	0	0	0	2	0
16 - 20	238	7	241	7	240	3	186	5	231	7
21 - 24	189	13	159	3	188	8	173	10	206	11
25 - 64	1,222	56	1,288	60	1,340	51	1,218	48	1,369	52
65 +	204	1	256	3	239	2	208	2	254	1
Unknown	82	0	73	0	81	0	71	0	82	0
<b>Total</b>	<b>1,937</b>	<b>77</b>	<b>2,017</b>	<b>73</b>	<b>2,091</b>	<b>64</b>	<b>1,856</b>	<b>65</b>	<b>2,144</b>	<b>71</b>

### 5-Year Trend Total Drivers in Crashes by Age



### 5-Year Trend Total Drivers Coded Drinking by Age



**2021 - Bodily Alcohol Concentration (BAC) Results Among  
All Vehicle Drivers in Alcohol-Involved Crashes by Age**

Age Group	Drivers				BAC Result Range for Drivers Coded Drinking				
	Total Drivers in Alcohol-Involved Crashes	Total Drivers Tested in all Crashes	Total Drivers Coded Drinking, Tested	Total Drivers Coded Drinking	BAC = 0.00	BAC 0.01 g/dL to 0.07 g/dL	BAC 0.08 g/dL to 0.16 g/dL	BAC 0.17 g/dL and Above	BAC Not Reported
0 - 15	0	0	0	0	0	0	0	0	0
16 - 20	8	6	6	7	0	3	1	0	3
21 - 24	11	15	10	11	0	0	2	5	4
25 - 64	67	61	44	52	0	5	11	19	17
65 +	4	5	1	1	0	1	0	0	0
Unknown	0	0	0	0	0	0	0	0	0
<b>Total</b>	<b>90</b>	<b>87</b>	<b>61</b>	<b>71</b>	<b>0</b>	<b>9</b>	<b>14</b>	<b>24</b>	<b>24</b>

Notes: BAC measured in grams (g) per deciliter (dL).

BAC may not be reported if drivers are not tested or if the results are not available immediately (as in the case of a blood test).

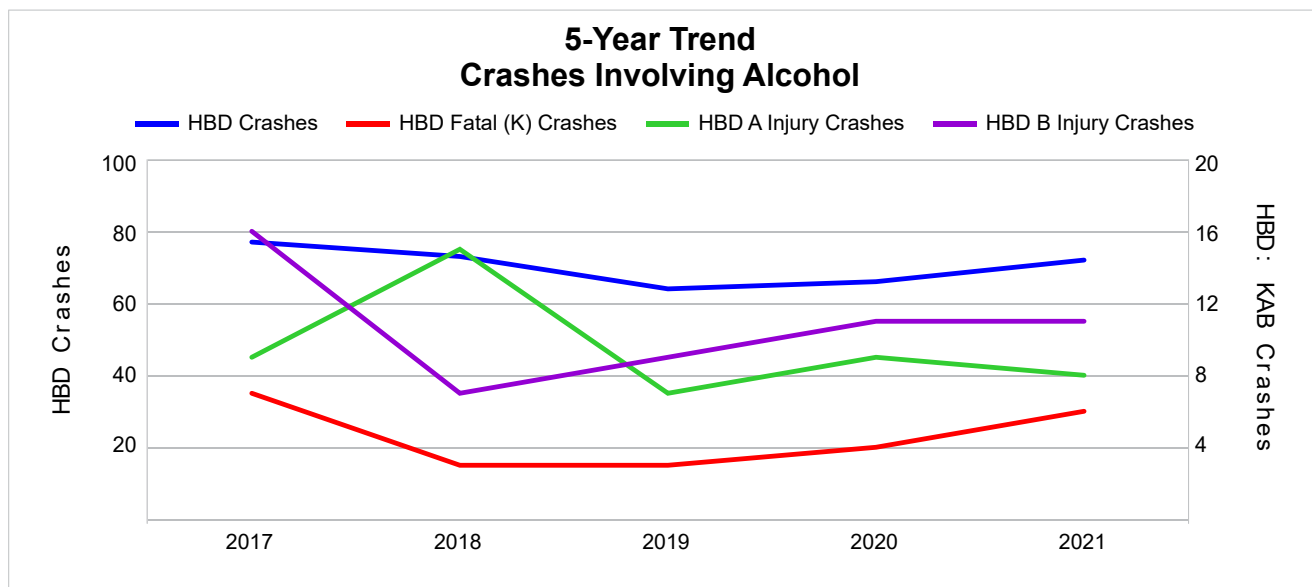
A driver may be coded by the officer as drinking even though no test is administered.

**5-Year Trend - Crashes Involving Alcohol**

Year	All Crashes	HBD Crashes	% HBD	Fatal Crashes	HBD Fatal Crashes	% HBD	A Injury Crashes	HBD A Injury Crashes	% HBD	B Injury Crashes	HBD B Injury Crashes	% HBD
2017	1,431	77	5.4	13	7	53.8	51	9	17.6	80	16	20.0
2018	1,517	73	4.8	8	3	37.5	52	15	28.8	68	7	10.3
2019	1,556	64	4.1	8	3	37.5	47	7	14.9	70	9	12.9
2020	1,439	66	4.6	9	4	44.4	41	9	22.0	59	11	18.6
2021	1,625 **	72	4.4	16 **	6	37.5	40 *	8	20.0	62	11	17.7

Note: \* Indicates that the most recent year is the lowest number or percentage reported in the 5-year period in that column.

\*\* Indicates that the most recent year is the highest number or percentage reported in the 5-year period in that column.



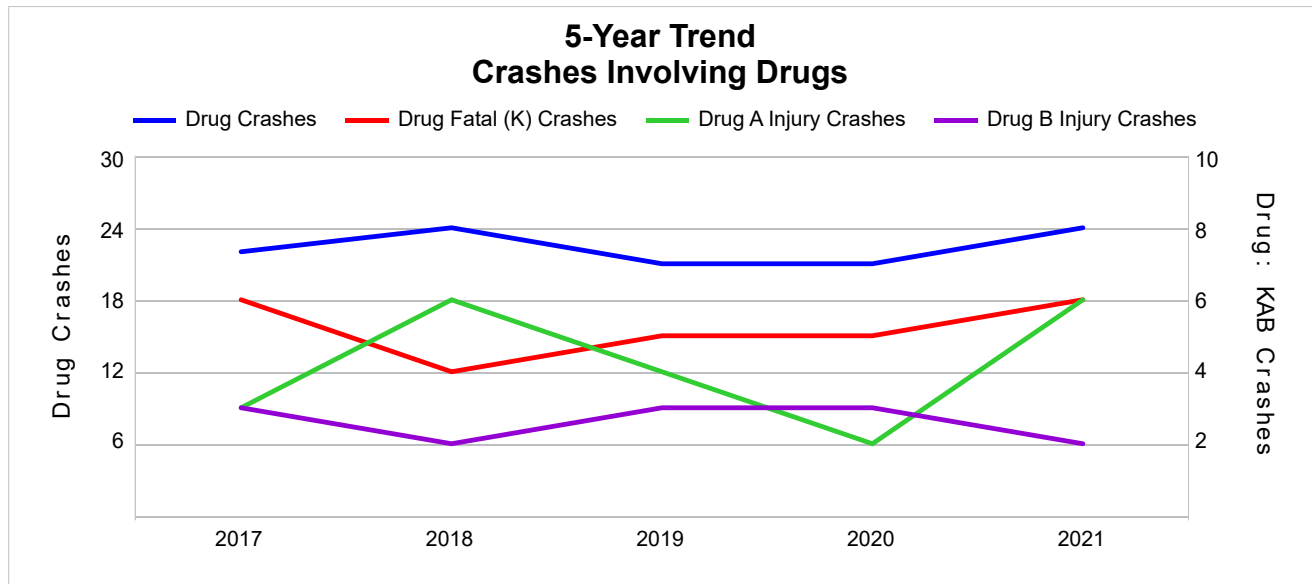
Note: Had-Been-Drinking (HBD)

## 5-Year Trend - Crashes Involving Drugs

Year	All Crashes	Drug Crashes	% Drug	Fatal Crashes	Drug Fatal Crashes	% Drug	A Injury Crashes	Drug A Injury Crashes	% Drug	B Injury Crashes	Drug B Injury Crashes	% Drug
2017	1,431	22	1.5	13	6	46.2	51	3	5.9	80	3	3.8
2018	1,517	24	1.6	8	4	50.0	52	6	11.5	68	2	2.9
2019	1,556	21	1.3	8	5	62.5	47	4	8.5	70	3	4.3
2020	1,439	21	1.5	9	5	55.6	41	2	4.9	59	3	5.1
2021	1,625 **	24	1.5	16 **	6	37.5 *	40 *	6	15.0 **	62	2	3.2

Note: \* Indicates that the most recent year is the lowest number or percentage reported in the 5-year period in that column.

\*\* Indicates that the most recent year is the highest number or percentage reported in the 5-year period in that column.



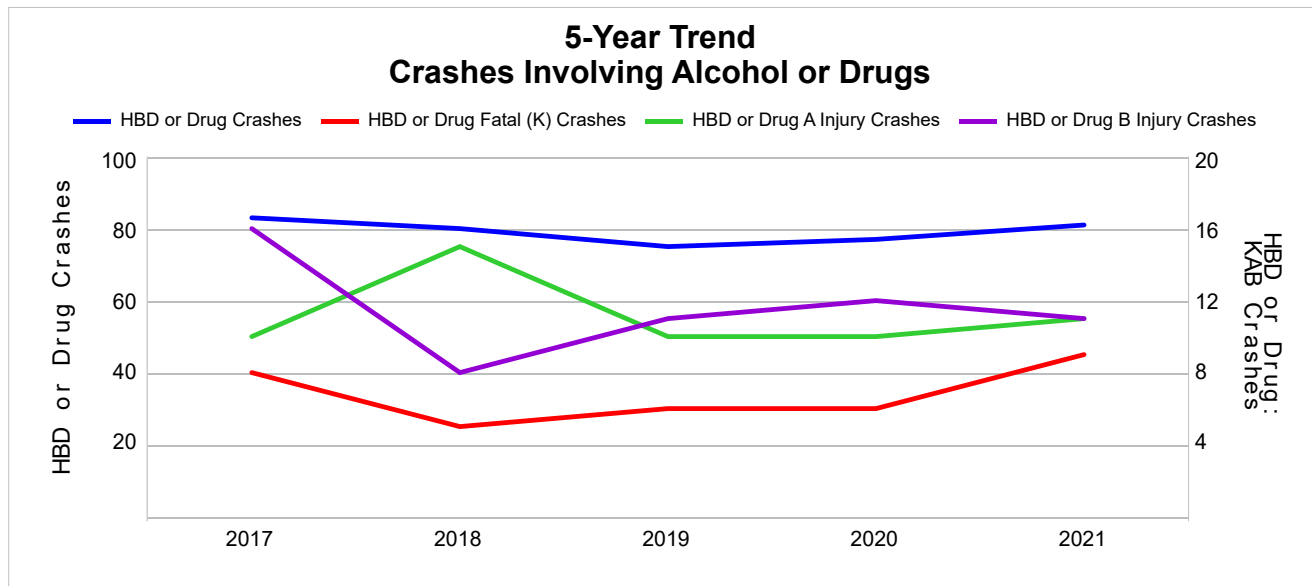


## 5-Year Trend - Crashes Involving Alcohol or Drugs

Year	All Crashes	HBD or Drug Crashes	% HBD or Drug	Fatal Crashes	HBD or Drug Fatal Crashes	% HBD or Drug	A Injury Crashes	HBD or Drug A Injury Crashes	% HBD or Drug	B Injury Crashes	HBD or Drug B Injury Crashes	% HBD or Drug
2017	1,431	83	5.8	13	8	61.5	51	10	19.6	80	16	20.0
2018	1,517	80	5.3	8	5	62.5	52	15	28.8	68	8	11.8
2019	1,556	75	4.8	8	6	75.0	47	10	21.3	70	11	15.7
2020	1,439	77	5.4	9	6	66.7	41	10	24.4	59	12	20.3
2021	1,625 **	81	5.0	16 **	9 **	56.3 *	40 *	11	27.5	62	11	17.7

Note: \* Indicates that the most recent year is the lowest number or percentage reported in the 5-year period in that column.

\*\* Indicates that the most recent year is the highest number or percentage reported in the 5-year period in that column.



Note: Had-Been-Drinking (HBD)

## 2021 - Restraints Worn Among Vehicle Drivers and Injured Passengers by Vehicle Type

Vehicle Type	Total Occupants			Fatalities			A - Suspected Serious			B - Suspected Minor			C - Possible Injury			No Injury		
	Total	Used Restraint	%	Total	Used Restraint	%	Total	Used Restraint	%	Total	Used Restraint	%	Total	Used Restraint	%	Total	Used Restraint	%
Passenger Car, SUV, Van	1,688	1,556	92.2	14	8	57.1	31	17	54.8	57	53	93.0	139	131	94.2	1,406	1,347	95.8
Motor Home	12	12	100.0	0	0	0.0	0	0	0.0	0	0	0.0	0	0	0.0	12	12	100.0
Pickup Truck	402	372	92.5	2	1	50.0	13	10	76.9	18	17	94.4	26	25	96.2	328	319	97.3
Small Truck Under 10,000 lbs. GVWR	14	13	92.9	0	0	0.0	0	0	0.0	0	0	0.0	0	0	0.0	14	13	92.9
Motorcycle	24	14	58.3	0	0	0.0	6	2	33.3	9	4	44.4	7	6	85.7	2	2	100.0
Moped/Goped	0	0	0.0	0	0	0.0	0	0	0.0	0	0	0.0	0	0	0.0	0	0	0.0
Go-Cart/Golf Cart	0	0	0.0	0	0	0.0	0	0	0.0	0	0	0.0	0	0	0.0	0	0	0.0
Snowmobile	0	0	0.0	0	0	0.0	0	0	0.0	0	0	0.0	0	0	0.0	0	0	0.0
Off-Road Vehicle (ORV)/All-Terrain Vehicle (ATV)	1	0	0.0	0	0	0.0	0	0	0.0	0	0	0.0	0	0	0.0	0	0	0.0
Other (non-registered farm equipment, construction equipment, snow plows, etc.)	9	4	44.4	0	0	0.0	1	0	0.0	0	0	0.0	1	1	100.0	6	3	50.0
Truck/Bus (over 10,000 lbs. GVWR/8+ occupants/hazmat placard)	50	49	98.0	0	0	0.0	0	0	0.0	0	0	0.0	1	1	100.0	48	48	100.0
Uncoded & Errors	25	0	0.0	0	0	0.0	0	0	0.0	0	0	0.0	0	0	0.0	0	0	0.0
<b>Total</b>	<b>2,225</b>	<b>2,020</b>	<b>90.8</b>	<b>16</b>	<b>9</b>	<b>56.3</b>	<b>51</b>	<b>29</b>	<b>56.9</b>	<b>84</b>	<b>74</b>	<b>88.1</b>	<b>174</b>	<b>164</b>	<b>94.3</b>	<b>1,816</b>	<b>1,744</b>	<b>96.0</b>

Note: Restraint Use includes shoulder belt only used, lap belt only used, both lap and shoulder belts used, child restraint used, restraint failure, and helmet worn.

## 2021 - Restraints Worn Among Vehicle Drivers and Injured Passengers by Age

Age Group	Total Occupants			Fatalities			A - Suspected Serious			B - Suspected Minor			C - Possible Injury			No Injury		
	Total	Used Restraint	%	Total	Used Restraint	%	Total	Used Restraint	%	Total	Used Restraint	%	Total	Used Restraint	%	Total	Used Restraint	%
0 - 15	21	20	95.2	1	1	100.0	4	3	75.0	5	5	100.0	9	9	100.0	2	2	100.0
16 - 20	252	231	91.7	2	2	100.0	8	2	25.0	14	12	85.7	28	24	85.7	199	191	96.0
21 - 24	214	201	93.9	5	2	40.0	2	1	50.0	7	7	100.0	21	19	90.5	179	172	96.1
25 - 64	1,398	1,324	94.7	8	4	50.0	33	20	60.6	44	39	88.6	94	90	95.7	1,217	1,171	96.2
65 +	258	244	94.6	0	0	0.0	4	3	75.0	14	11	78.6	22	22	100.0	217	208	95.9
Unknown	82	0	0.0	0	0	0.0	0	0	0.0	0	0	0.0	0	0	0.0	2	0	0.0
<b>Total</b>	<b>2,225</b>	<b>2,020</b>	<b>90.8</b>	<b>16</b>	<b>9</b>	<b>56.3</b>	<b>51</b>	<b>29</b>	<b>56.9</b>	<b>84</b>	<b>74</b>	<b>88.1</b>	<b>174</b>	<b>164</b>	<b>94.3</b>	<b>1,816</b>	<b>1,744</b>	<b>96.0</b>

Note: Restraint Use includes shoulder belt only used, lap belt only used, both lap and shoulder belts used, child restraint used, restraint failure, and helmet worn.

## 5-Year Trend - Restraint Use Among Drivers

Restraint Use	2017			2018			2019			2020			2021		
	Drivers	Fatal Drivers	Injured Drivers	Drivers	Fatal Drivers	Injured Drivers	Drivers	Fatal Drivers	Injured Drivers	Drivers	Fatal Drivers	Injured Drivers	Drivers	Fatal Drivers	Injured Drivers
No Belts Available	8	0	2	4	0	2	3	0	1	1	0	0	6	0	1
Shoulder Belt Only Used	14	0	2	18	0	2	13	0	0	10	0	0	19	0	1
Lap Belt Only Used	4	0	0	2	0	1	5	0	0	3	0	0	10	0	2
Both Lap & Shoulder Belt Used	1,729	4	224	1,812	1	226	1,889	2	240	1,677	2	211	1,911	8	187
No Belts Used	15	3	6	17	1	10	17	2	6	23	2	8	18	5	9
Child Restraint Used - Forward Facing	0	0	0	0	0	0	0	0	0	0	0	0	0	0	0
Child Restraint Not Used, Unavailable or Improper Use	0	0	0	0	0	0	0	0	0	0	0	0	0	0	0
Child Restraint Used - Rear Facing	0	0	0	0	0	0	0	0	0	0	0	0	0	0	0
Child Restraint Used - Booster Seat	0	0	0	0	0	0	0	0	0	0	0	0	0	0	0
Restraint Failure	1	0	1	0	0	0	1	1	0	0	0	0	0	0	0
Restraint Use Unknown	140	2	21	131	1	13	143	0	13	118	1	7	155	1	10
Helmet Worn	12	1	9	16	2	12	8	1	5	13	1	8	12	0	10
Helmet Not Worn	11	0	10	12	0	10	11	0	10	10	0	9	9	0	9
Helmet Use Unknown	2	0	1	3	0	2	0	0	0	0	0	0	1	0	1
Uncoded & Errors	1	0	0	2	0	0	1	0	0	1	0	0	3	0	0
<b>Total</b>	<b>1,937</b>	<b>10</b>	<b>276</b>	<b>2,017</b>	<b>5</b>	<b>278</b>	<b>2,091</b>	<b>6</b>	<b>275</b>	<b>1,856</b>	<b>6</b>	<b>243</b>	<b>2,144</b>	<b>14</b>	<b>230</b>

## 5-Year Trend - Restraint Use Among Drivers Coded Drinking

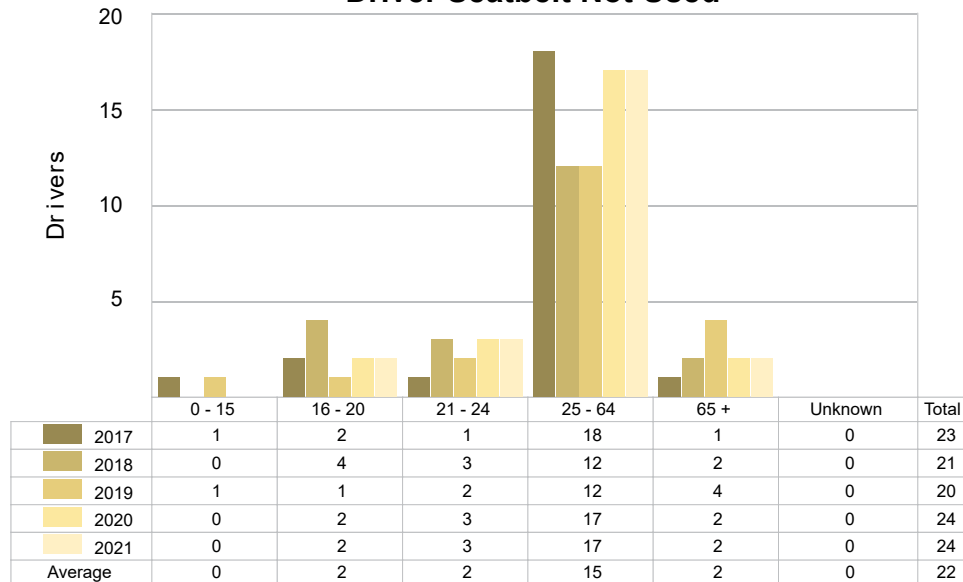
Restraint Use	2017			2018			2019			2020			2021		
	Drivers	Fatal Drivers	Injured Drivers	Drivers	Fatal Drivers	Injured Drivers	Drivers	Fatal Drivers	Injured Drivers	Drivers	Fatal Drivers	Injured Drivers	Drivers	Fatal Drivers	Injured Drivers
No Belts Available	0	0	0	0	0	0	0	0	0	0	0	0	0	0	0
Shoulder Belt Only Used	1	0	1	0	0	0	0	0	0	0	0	0	1	0	0
Lap Belt Only Used	0	0	0	0	0	0	0	0	0	0	0	0	0	0	0
Both Lap & Shoulder Belt Used	54	2	24	49	1	21	46	0	20	49	0	23	55	3	12
No Belts Used	7	2	4	5	1	3	3	2	0	4	1	3	5	3	2
Child Restraint Used - Forward Facing	0	0	0	0	0	0	0	0	0	0	0	0	0	0	0
Child Restraint Not Used, Unavailable or Improper Use	0	0	0	0	0	0	0	0	0	0	0	0	0	0	0
Child Restraint Used - Rear Facing	0	0	0	0	0	0	0	0	0	0	0	0	0	0	0
Child Restraint Used - Booster Seat	0	0	0	0	0	0	0	0	0	0	0	0	0	0	0
Restraint Failure	0	0	0	0	0	0	0	0	0	0	0	0	0	0	0
Restraint Use Unknown	13	0	8	16	0	8	12	0	3	10	1	2	10	0	4
Helmet Worn	1	1	0	1	0	1	0	0	0	1	0	1	0	0	0
Helmet Not Worn	1	0	0	2	0	2	3	0	3	1	0	1	0	0	0
Helmet Use Unknown	0	0	0	0	0	0	0	0	0	0	0	0	0	0	0
Uncoded & Errors	0	0	0	0	0	0	0	0	0	0	0	0	0	0	0
<b>Total</b>	<b>77</b>	<b>5</b>	<b>37</b>	<b>73</b>	<b>2</b>	<b>35</b>	<b>64</b>	<b>2</b>	<b>26</b>	<b>65</b>	<b>2</b>	<b>30</b>	<b>71</b>	<b>6</b>	<b>18</b>

## 5-Year Trend - Seatbelt Not Used Among Drivers by Age

Age Group	2017			2018			2019			2020			2021		
	Drivers	Fatal Drivers	Injured Drivers	Drivers	Fatal Drivers	Injured Drivers	Drivers	Fatal Drivers	Injured Drivers	Drivers	Fatal Drivers	Injured Drivers	Drivers	Fatal Drivers	Injured Drivers
0 - 15	1	0	1	0	0	0	1	0	1	0	0	0	0	0	0
16 - 20	2	0	1	4	0	3	1	0	1	2	0	0	2	0	2
21 - 24	1	1	0	3	0	2	2	1	0	3	0	1	3	2	0
25 - 64	18	2	5	12	1	6	12	1	4	17	1	7	17	3	6
65 +	1	0	1	2	0	1	4	0	1	2	1	0	2	0	2
Unknown	0	0	0	0	0	0	0	0	0	0	0	0	0	0	0
<b>Total</b>	<b>23</b>	<b>3</b>	<b>8</b>	<b>21</b>	<b>1</b>	<b>12</b>	<b>20</b>	<b>2</b>	<b>7</b>	<b>24</b>	<b>2</b>	<b>8</b>	<b>24</b>	<b>5</b>	<b>10</b>

Note: Seatbelt Not Used includes no belts available or no belts used.

### 5-Year Trend Driver Seatbelt Not Used

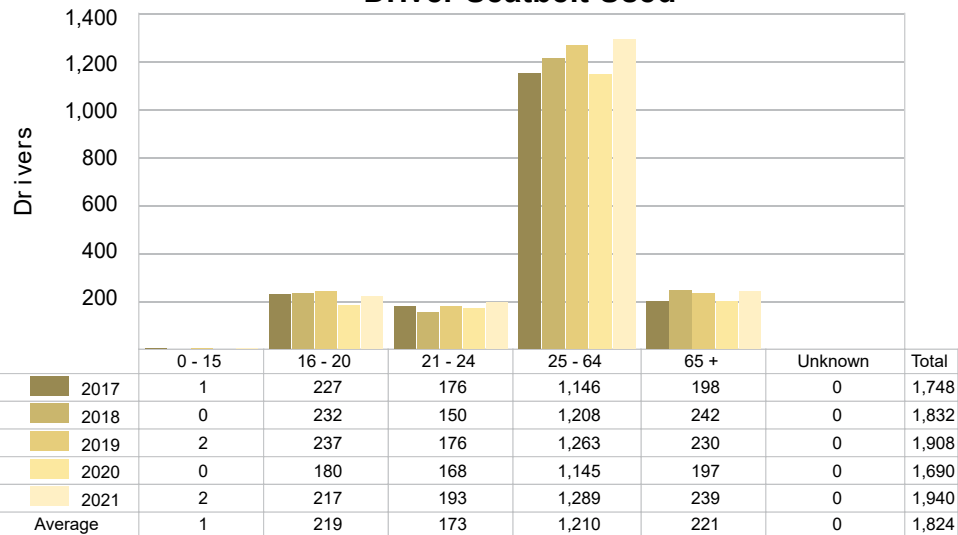


## 5-Year Trend - Seatbelt Used Among Drivers by Age

Age Group	2017			2018			2019			2020			2021		
	Drivers	Fatal Drivers	Injured Drivers	Drivers	Fatal Drivers	Injured Drivers	Drivers	Fatal Drivers	Injured Drivers	Drivers	Fatal Drivers	Injured Drivers	Drivers	Fatal Drivers	Injured Drivers
0 - 15	1	0	1	0	0	0	2	0	0	0	0	0	2	0	0
16 - 20	227	0	30	232	0	32	237	0	29	180	0	25	217	2	24
21 - 24	176	1	29	150	0	14	176	1	21	168	0	21	193	2	19
25 - 64	1,146	3	143	1,208	1	145	1,263	1	152	1,145	0	137	1,289	4	115
65 +	198	0	24	242	0	38	230	1	38	197	2	28	239	0	32
Unknown	0	0	0	0	0	0	0	0	0	0	0	0	0	0	0
<b>Total</b>	<b>1,748</b>	<b>4</b>	<b>227</b>	<b>1,832</b>	<b>1</b>	<b>229</b>	<b>1,908</b>	<b>3</b>	<b>240</b>	<b>1,690</b>	<b>2</b>	<b>211</b>	<b>1,940</b>	<b>8</b>	<b>190</b>

Note: Seatbelt Used includes shoulder belt only used, lap belt only used, both lap and shoulder belts used, and restraint failure.

## 5-Year Trend Driver Seatbelt Used



## 5-Year Trend - Drivers in Crashes by Hazardous Action

Hazardous Action	2017		2018		2019		2020		2021	
	Total Drivers in Crashes	Drivers in Fatal Crashes	Total Drivers in Crashes	Drivers in Fatal Crashes	Total Drivers in Crashes	Drivers in Fatal Crashes	Total Drivers in Crashes	Drivers in Fatal Crashes	Total Drivers in Crashes	Drivers in Fatal Crashes
None	1,068	7	1,119	3	1,208	6	1,078	3	1,274	8
Speed Too Fast	203	5	219	2	230	3	196	2	188	6
Speed Too Slow	3	0	4	0	2	0	1	0	1	0
Failed to Yield	168	0	159	0	152	0	151	2	182	0
Disregard Traffic Control	24	1	21	0	33	1	22	0	41	0
Drove Wrong Way	2	0	1	0	0	0	4	0	2	0
Drove Left of Center	19	2	14	1	28	1	17	0	11	0
Improper Passing	11	0	21	0	10	0	13	0	18	0
Improper Lane Use	7	0	13	0	12	0	12	0	14	0
Improper Turn	13	0	18	0	15	0	11	0	10	0
Improper/No Signal	1	0	0	0	3	0	5	0	3	0
Improper Backing	20	0	13	0	17	0	14	0	8	0
Unable to Stop in Assured Clear Distance	124	0	140	0	146	0	110	1	140	0
Other	71	1	85	0	62	0	71	0	91	0
Unknown	91	1	105	3	90	1	71	1	75	8
Reckless Driving	23	1	19	0	18	0	15	2	12	2
Careless/Negligent Driving	89	0	65	2	64	1	64	1	72	2
Uncoded & Errors	0	0	1	0	1	0	1	0	2	0
<b>Total</b>	<b>1,937</b>	<b>18</b>	<b>2,017</b>	<b>11</b>	<b>2,091</b>	<b>13</b>	<b>1,856</b>	<b>12</b>	<b>2,144</b>	<b>26</b>

### Office of Highway Safety Planning

---

Physical Address:  
7150 Harris Drive  
Dimondale, Michigan 48821

Mailing Address:  
P.O. Box 30634  
Lansing, Michigan 48909

Find us on the web:  
[MichiganTrafficCrashFacts.org](http://MichiganTrafficCrashFacts.org)  
[mtcf-info@umich.edu](mailto:mtcf-info@umich.edu)

