



2020

**MTCF**  
Michigan Traffic  
Crash Facts

# Michigan Traffic Crash Facts

## Reporting Criteria

Please pay particular attention to the wording when interpreting the three levels of data gathered for this report.

### Crash

The Crash Level analyzes data related to crash events and returns one result per crash.

Examples: Time, weather, and location.

### Units

The Units Level analyzes the experience of the units in the crash and returns one result per vehicle, driver, pedestrian, bicyclist, or train.

Examples: Vehicle type, driver condition, and unit events.

### People

The People Level analyzes the experience of the people involved in the crash and returns one result per occupant/person/party.

Examples: Age, injury severity, and seat belt or helmet use.

### **KABCO Injury Indicator:**

K = Killed

A = Suspected Serious Injury

B = Suspected Minor Injury

C = Possible Injury

O = No Injury

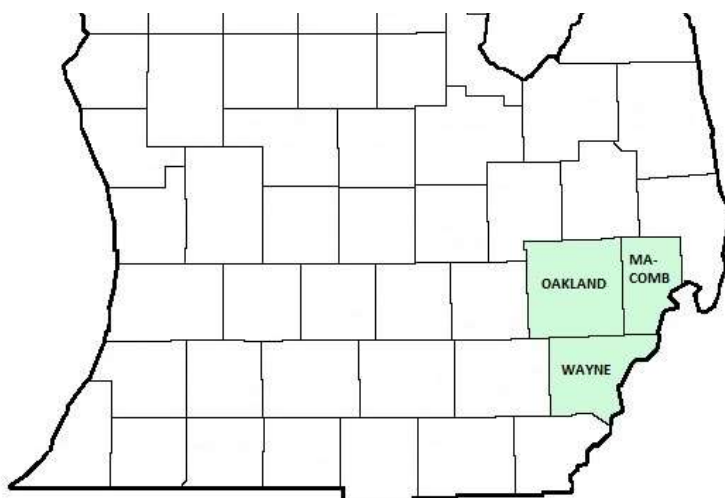
Property Damage Only (PDO)



## Michigan State Police (MSP) District 2 - Metro

### 2020 Traffic Crash Data & 2016-2020 5-Year Trends

Beginning in 2011, District 2 is comprised of Macomb, Oakland, and Wayne counties. Trend tables for this report are based on those counties.



### Sources:

The crashes in this report occurred on public roadways in Michigan and resulted in injuries, fatalities, or property damage (with \$1,000 as a reporting threshold). The information was gathered from Michigan Traffic Crash Report Forms (UD-10) submitted by local police departments, sheriff's offices, and the Michigan State Police. Other related information was obtained from the departments of Transportation, State, and Community Health.

This page left intentionally blank

## MSP District 2 - Metro

- There were 88,129 crashes in District 2 during 2020. [Page 1]
- A total of 355 fatalities resulted from 329 fatal crashes in 2020 in District 2. [Page 1]
- There were 26,825 injuries and 19,339 injury crashes. [Page 1]
- There were 68,461 property damage only crashes (no fatalities or injuries). [Page 1]
- January had the highest number of crashes (9,362). [Pages 1-2]
- July had the highest number of fatal crashes (43) and fatalities (45). [Pages 1-2]
- August had the highest number of injury crashes (2,139) and injuries (3,007). [Page 1]
- February had the highest number of property damage only crashes (7,621). [Page 1]
- Of all vehicles involved in fatal crashes, 55 (10.1%) were motorcycles. [Page 1]
- Wednesday was the day of the week with the highest number of crashes (14,382) and Saturday had the highest number of fatal crashes (60). [Pages 2-3]
- The 3:00 PM - 5:59 PM time period had the highest number of crashes (21,909). This holds true for every year between 2016 and 2020. The 9:00 PM - 11:59 PM time period had the highest number of fatal crashes (74). [Pages 5-6]
- During the period from 2016 to 2020, the highest number of deer crashes occurred in 2019 (3,120). The 6:00 PM - 8:59 PM time period consistently had the highest number of deer-involved crashes during the five-year period. There was one fatal crash involving deer in 2020. [Pages 7-8]
- Wayne County (49.9%) had the highest number of crashes in District 2 in 2020, followed by Oakland County (29.9%), and Macomb County (20.2%). [Page 8]
- Wayne County (71.0%) had the highest number of fatalities in District 2 in 2020, followed by Oakland County (17.5%), and Macomb County (11.5%). [Page 8]
- The highest number of drivers in crashes (238,176) occurred during 2017 and the highest number of drivers coded drinking in crashes (3,154) occurred during 2016 within the five year period between 2016 and 2020. [Page 9]
- A total of 2,843 crashes involved alcohol in 2020. [Page 11]
- Alcohol-involved fatal crashes were the highest in 2016 during the five-year period from 2016 to 2020 at 97. [Page 11]
- A total of 890 crashes, 31 fatal crashes, and 71 suspected serious injury crashes involved drugs in 2020. [Page 12]
- There were 125,163 drivers wearing seatbelts and 1,179 drivers not wearing seatbelts in crashes in 2020. Of the 1,179 drivers not wearing seat belts, 39 (3.3%) were killed and 483 (41.0%) were injured. [Pages 15-17]
- The most common hazardous action coded for drivers in 2020 in all crashes was unable to stop in assured clear distance (22,402), while the most common hazardous action coded for drivers in fatal crashes was unknown (69). [Page 18]

# MSP District 2 - Metro (continued)

## District 2 Experience

In 2020:

There were 167,210 drivers involved in 88,129 motor vehicle crashes in MSP District 2. Of those crashes, 329 were classified as fatal, resulting in 355 fatalities. An additional 26,825 persons were injured.

District 2 experienced the highest number of motor vehicle crashes (9,362) in January, the highest number of fatal crashes (43) and the highest number of persons killed (45) in July.

Michigan driver statistics indicate 6.0 percent of licensed drivers in District 2 were age 16-20, and 9.0 percent of drivers in crashes were also in that age group.

## 2020 - Crashes and Injuries by Month

Month	Crashes				Persons	
	Total	Fatal	Injury	Property Damage Only (PDO)	Fatalities	Injuries
January	9,362	19	1,759	7,584	20	2,430
February	9,252	15	1,616	7,621	17	2,247
March	5,353	21	1,185	4,147	23	1,689
April	3,002	17	686	2,299	20	914
May	5,350	29	1,268	4,053	31	1,779
June	7,551	30	1,897	5,624	33	2,676
July	8,340	43	2,083	6,214	45	2,841
August	8,328	38	2,139	6,151	38	3,007
September	7,941	39	1,864	6,038	41	2,565
October	8,563	32	1,827	6,704	33	2,538
November	7,498	23	1,555	5,920	27	2,128
December	7,589	23	1,460	6,106	27	2,011
<b>Total</b>	<b>88,129</b>	<b>329</b>	<b>19,339</b>	<b>68,461</b>	<b>355</b>	<b>26,825</b>

## 2020 - Driver Statistics

Age Group	District 2			Driver Rates	
	2019 Population*	Licensed Drivers	Drivers in Crashes	Per 10k Population	Per 10k Licensed
0 - 15	753,175	12,313	251	3.3	203.8
16 - 20	228,751	163,508	15,066	658.6	921.4
21 - 24	192,476	165,511	14,642	760.7	884.7
25 - 64	2,060,023	1,817,740	96,305	467.5	529.8
65 +	646,474	555,307	14,790	228.8	266.3
Unknown	0	0	26,156	--	--
<b>Total</b>	<b>3,880,899</b>	<b>2,714,379</b>	<b>167,210</b>	<b>430.9</b>	<b>616.0</b>

\*2020 Population of Michigan Counties (by single-year of age) not yet available from U.S. Census Bureau

## 2020 - Vehicles in Crashes

Vehicle Type	Motor Vehicles		Fatal Crashes		Injury Crashes	PDO Crashes
	Number of Vehicles	% of Total	Number	% of Total	Number	Number
Passenger car, SUV, van	139,367	83.3	417	76.4	31,938	107,012
Motor home	244	0.1	0	0.0	48	196
Pickup truck	13,778	8.2	30	5.5	2,648	11,100
Small truck under 10,000 lbs. GVWR	650	0.4	2	0.4	133	515
Motorcycle	967	0.6	55	10.1	688	224
Moped / goped	164	0.1	3	0.5	124	37
Go-cart / golf cart	12	0.0	0	0.0	11	1
Snowmobile	1	0.0	0	0.0	1	0
Off-Road Vehicle - ORV / All-Terrain Vehicle - ATV	87	0.1	3	0.5	57	27
Other	522	0.3	3	0.5	114	405
Truck/bus over 10,000 lbs.	4,910	2.9	18	3.3	834	4,058
Unknown	6,508	3.9	15	2.7	879	5,614
<b>Total</b>	<b>167,210</b>	<b>100.0</b>	<b>546</b>	<b>100.0</b>	<b>37,475</b>	<b>129,189</b>

## 5-Year Trend - Crashes by Month

Month	2016		2017		2018		2019		2020	
	Total Crashes	Fatal Crashes	Total Crashes	Fatal Crashes	Total Crashes	Fatal Crashes	Total Crashes	Fatal Crashes	Total Crashes	Fatal Crashes
January	9,778	17	9,733	23	11,443	8	10,325	21	9,362	19
February	9,649	23	8,079	20	10,051	18	9,135	17	9,252	15
March	9,783	13	10,744	18	9,077	11	8,911	23	5,353	21
April	9,287	32	8,697	18	8,681	20	8,300	22	3,002	17
May	9,973	24	10,917	24	10,679	22	10,043	25	5,350	29
June	10,002	30	10,469	29	10,372	30	10,021	26	7,551	30
July	9,549	23	9,213	19	9,238	21	9,490	22	8,340	43
August	9,841	39	9,820	19	9,474	38	9,453	18	8,328	38
September	10,447	34	9,814	24	9,706	31	9,921	21	7,941	39
October	10,675	29	11,248	18	11,485	15	11,345	35	8,563	32
November	10,282	34	10,463	19	10,532	22	10,932	17	7,498	23
December	11,969	23	12,891	23	9,932	22	9,482	17	7,589	23
<b>Total</b>	<b>121,235</b>	<b>321</b>	<b>122,088</b>	<b>254</b>	<b>120,670</b>	<b>258</b>	<b>117,358</b>	<b>264</b>	<b>88,129</b>	<b>329</b>

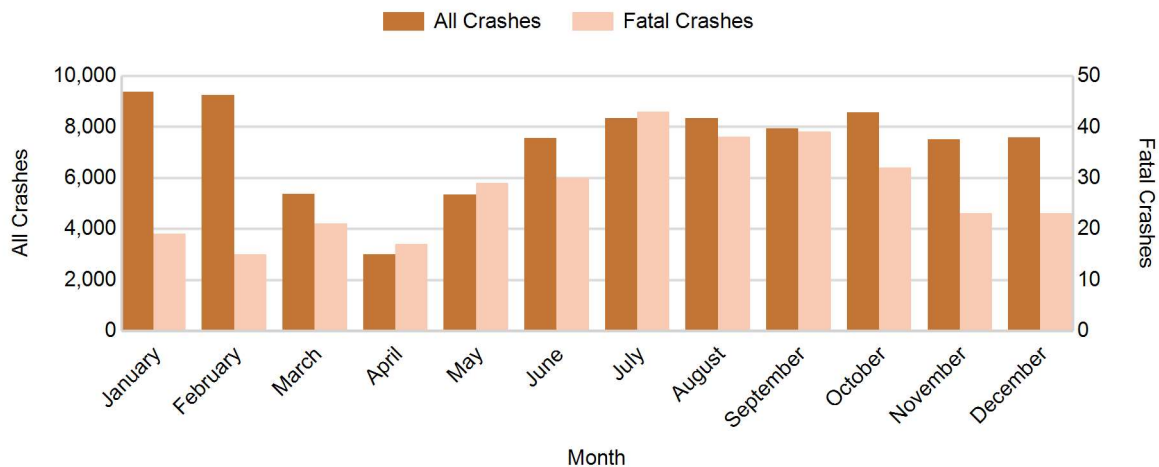
Note: † Indicates that the highest number of total crashes reported in the 5-year period occurred in the same month

## 5-Year Trend - Crashes by Day of Week

Day	2016		2017		2018		2019		2020	
	Total Crashes	Fatal Crashes	Total Crashes	Fatal Crashes	Total Crashes	Fatal Crashes	Total Crashes	Fatal Crashes	Total Crashes	Fatal Crashes
Monday	17,242	32	18,636	34	18,671	40	18,155	29	12,039	48
Tuesday	18,669	37	19,371	39	19,467	35	18,061	40	12,462	41
Wednesday	19,477	44	19,532	31	18,378	20	18,976	27	14,382	42
Thursday	19,612	44	19,209	40	18,850	34	18,097	40	13,430	43
Friday	20,093	47	19,805	35	19,783	47	18,442	32	14,273	43
Saturday	14,573	62	14,270	40	14,361	49	14,062	58	11,938	60
Sunday	11,569	55	11,265	35	11,160	33	11,565	38	9,605	52
<b>Total</b>	<b>121,235</b>	<b>321</b>	<b>122,088</b>	<b>254</b>	<b>120,670</b>	<b>258</b>	<b>117,358</b>	<b>264</b>	<b>88,129</b>	<b>329</b>

Note: † Indicates that the highest number of total crashes reported in the 5-year period occurred on the same day of the week

## 2020 Crashes by Month

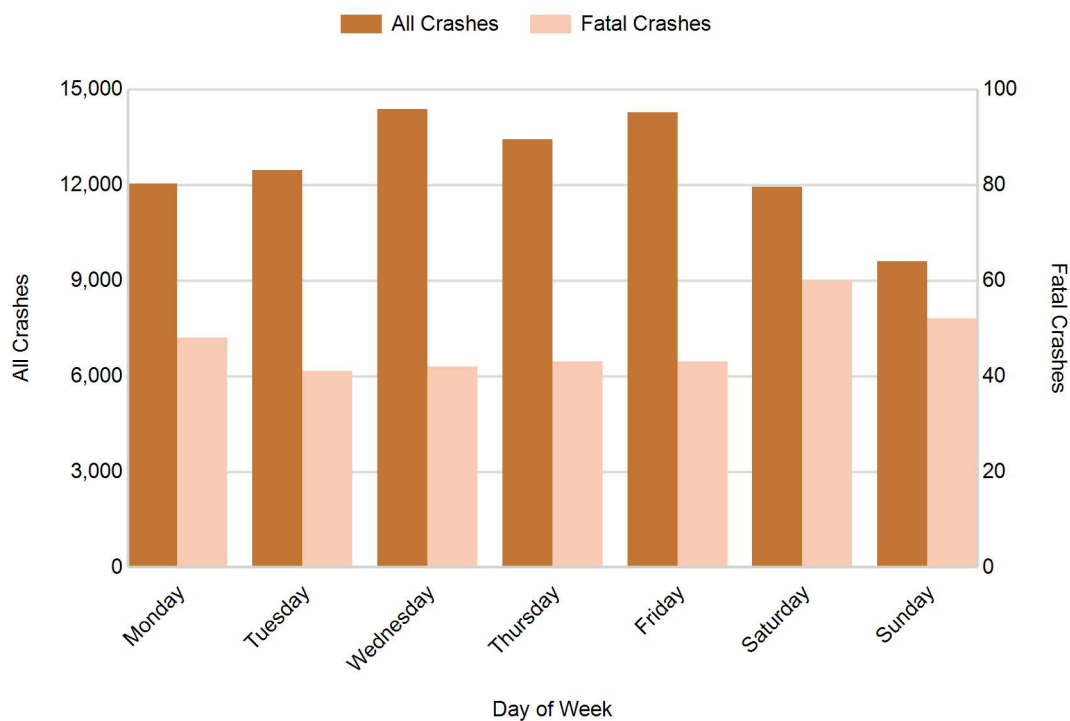


## MSP District 2 - Metro (continued)

## 2020 - Crashes by Day of Week

Day	All Crashes		Fatal Crashes		Injury Crashes			PDO Crashes
	Number	% of Total	Number	% of Fatal	A	B	C	Number
Monday	12,039	13.7	48	14.6	177	785	1,586	9,443
Tuesday	12,462	14.1	41	12.5	169	828	1,683	9,741
Wednesday	14,382	16.3	42	12.8	176	905	1,907	11,352
Thursday	13,430	15.2	43	13.1	192	878	1,824	10,493
Friday	14,273	16.2	43	13.1	210	901	2,017	11,102
Saturday	11,938	13.5	60	18.2	235	871	1,641	9,131
Sunday	9,605	10.9	52	15.8	225	736	1,393	7,199
<b>Total</b>	<b>88,129</b>	<b>100.0</b>	<b>329</b>	<b>100.0</b>	<b>1,384</b>	<b>5,904</b>	<b>12,051</b>	<b>68,461</b>

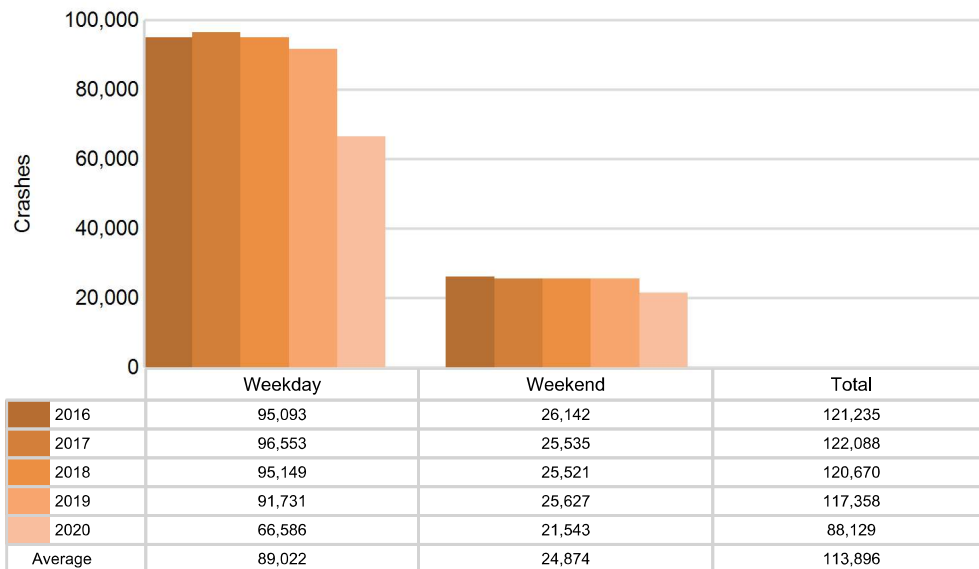
## 2020 Day of Week and Severity



## 5-Year Trend - Crashes by Weekday and Weekend

Portion of Week	2016		2017		2018		2019		2020	
	Total Crashes	Fatal Crashes	Total Crashes	Fatal Crashes	Total Crashes	Fatal Crashes	Total Crashes	Fatal Crashes	Total Crashes	Fatal Crashes
Weekday	95,093	204	96,553	179	95,149	176	91,731	168	66,586	217
Weekend	26,142	117	25,535	75	25,521	82	25,627	96	21,543	112
<b>Total</b>	<b>121,235</b>	<b>321</b>	<b>122,088</b>	<b>254</b>	<b>120,670</b>	<b>258</b>	<b>117,358</b>	<b>264</b>	<b>88,129</b>	<b>329</b>

## 5-Year Crash Trends by Weekday (Monday - Friday) and Weekend (Saturday & Sunday)

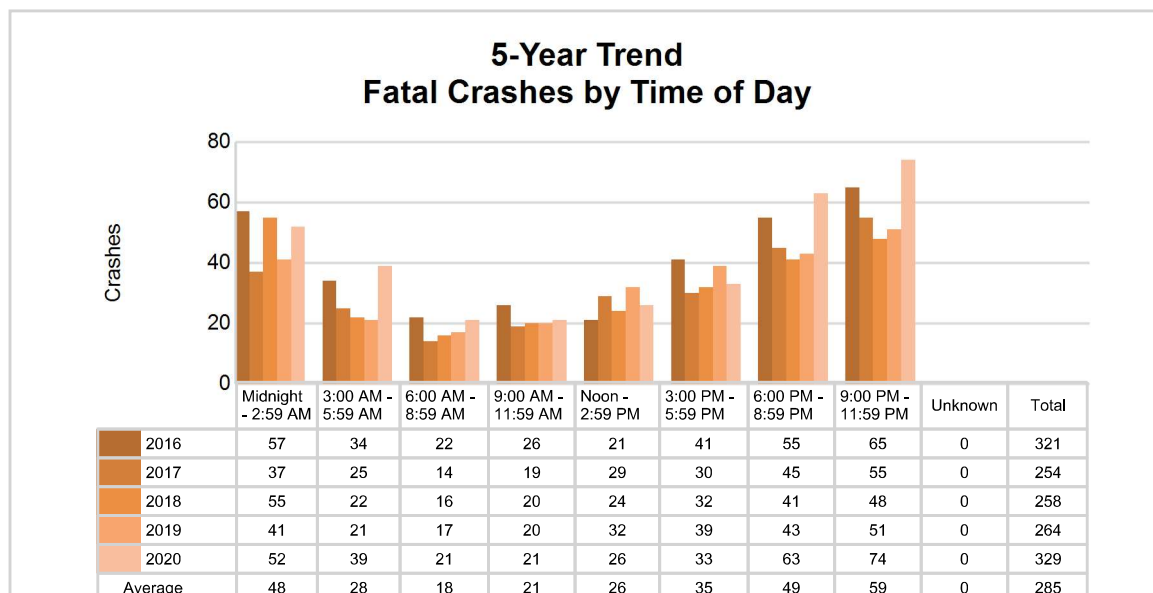
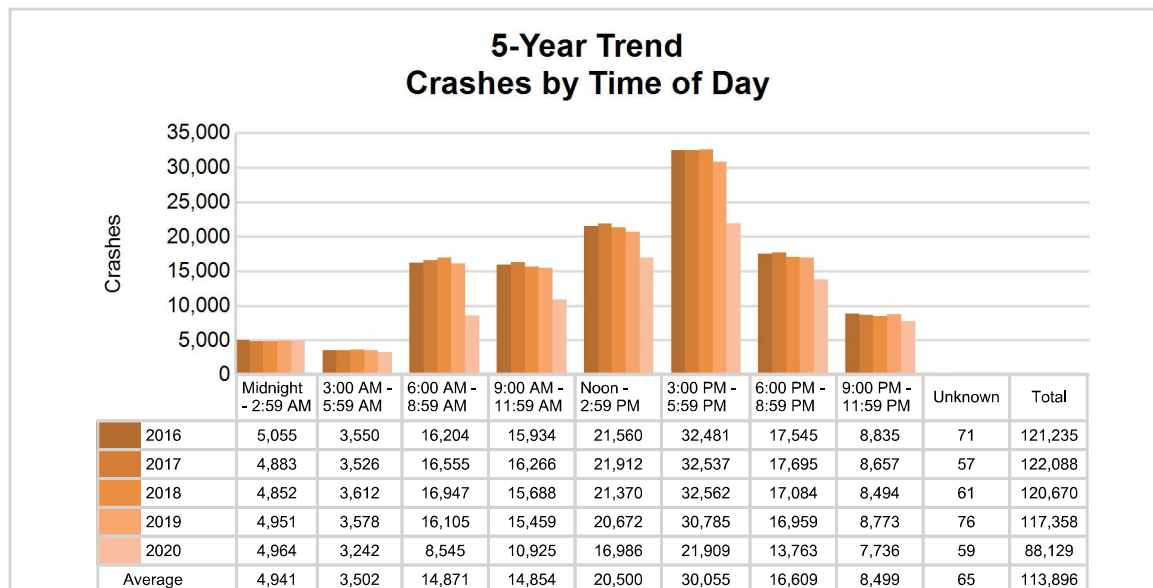


# MSP District 2 - Metro (continued)

## 5-Year Trend - Crashes by Time of Day

Time of Day	2016		2017		2018		2019		2020	
	Total Crashes	Fatal Crashes	Total Crashes	Fatal Crashes	Total Crashes	Fatal Crashes	Total Crashes	Fatal Crashes	Total Crashes	Fatal Crashes
Midnight - 2:59 AM	5,055	57	4,883	37	4,852	55	4,951	41	4,964	52
3:00 AM - 5:59 AM	3,550	34	3,526	25	3,612	22	3,578	21	3,242	39
6:00 AM - 8:59 AM	16,204	22	16,555	14	16,947	16	16,105	17	8,545	21
9:00 AM - 11:59 AM	15,934	26	16,266	19	15,688	20	15,459	20	10,925	21
Noon - 2:59 PM	21,560	21	21,912	29	21,370	24	20,672	32	16,986	26
3:00 PM - 5:59 PM	32,481 †	41	32,537 †	30	32,562 †	32	30,785 †	39	21,909 †	33
6:00 PM - 8:59 PM	17,545	55	17,695	45	17,084	41	16,959	43	13,763	63
9:00 PM - 11:59 PM	8,835	65	8,657	55	8,494	48	8,773	51	7,736	74
Unknown	71	0	57	0	61	0	76	0	59	0
<b>Total</b>	<b>121,235</b>	<b>321</b>	<b>122,088</b>	<b>254</b>	<b>120,670</b>	<b>258</b>	<b>117,358</b>	<b>264</b>	<b>88,129</b>	<b>329</b>

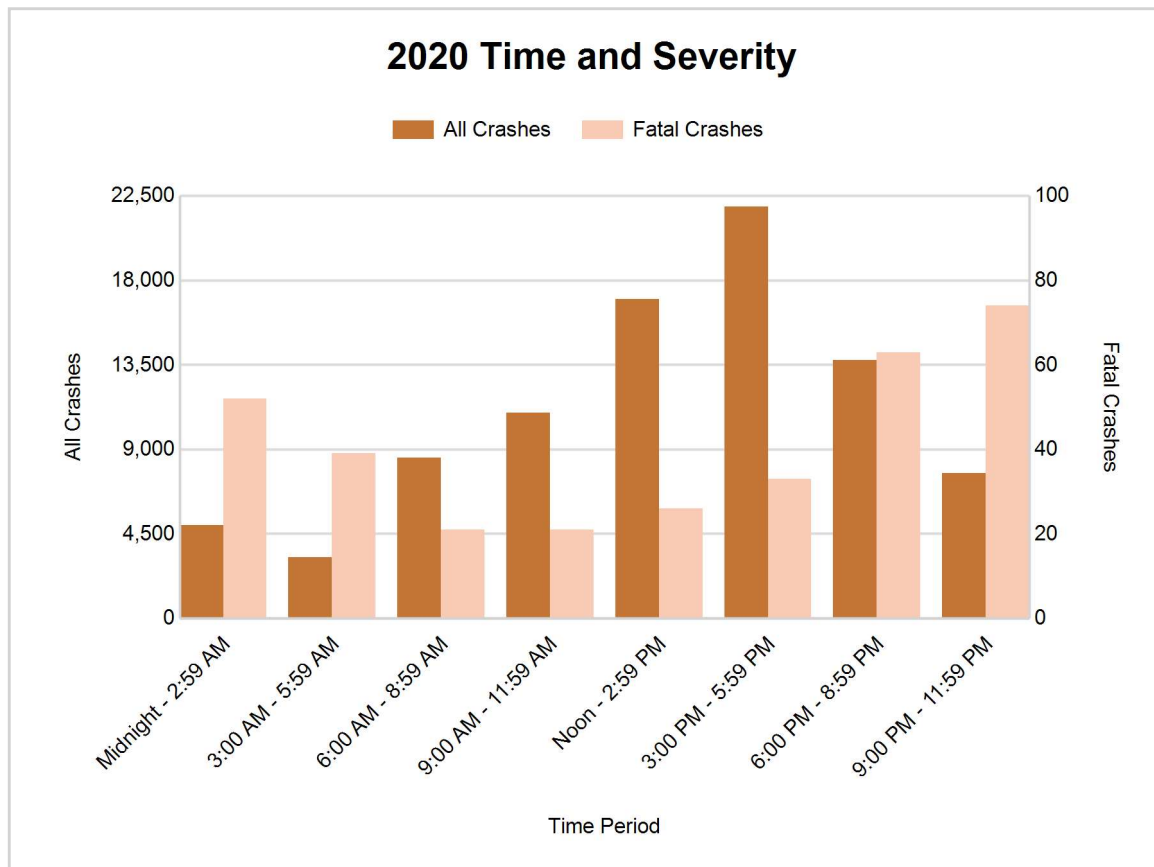
Note: † Indicates that the highest number of total crashes reported in the 5-year period occurred in the same time period





## 2020 - Time and Severity

Time of Day	All Crashes		Fatal Crashes		Injury Crashes			PDO Crashes
	Number	% of Total	Number	% of Fatal	A	B	C	Number
Midnight - 2:59 AM	4,964	5.6	52	15.8	184	410	776	3,542
3:00 AM - 5:59 AM	3,242	3.7	39	11.9	63	256	438	2,446
6:00 AM - 8:59 AM	8,545	9.7	21	6.4	72	456	1,026	6,970
9:00 AM - 11:59 AM	10,925	12.4	21	6.4	99	694	1,359	8,752
Noon - 2:59 PM	16,986	19.3	26	7.9	188	1,058	2,435	13,279
3:00 PM - 5:59 PM	21,909	24.9	33	10.0	268	1,421	2,965	17,222
6:00 PM - 8:59 PM	13,763	15.6	63	19.1	284	1,005	1,894	10,517
9:00 PM - 11:59 PM	7,736	8.8	74	22.5	225	602	1,154	5,681
Unknown	59	0.1	0	0.0	1	2	4	52
<b>Total</b>	<b>88,129</b>	<b>100.0</b>	<b>329</b>	<b>100.0</b>	<b>1,384</b>	<b>5,904</b>	<b>12,051</b>	<b>68,461</b>

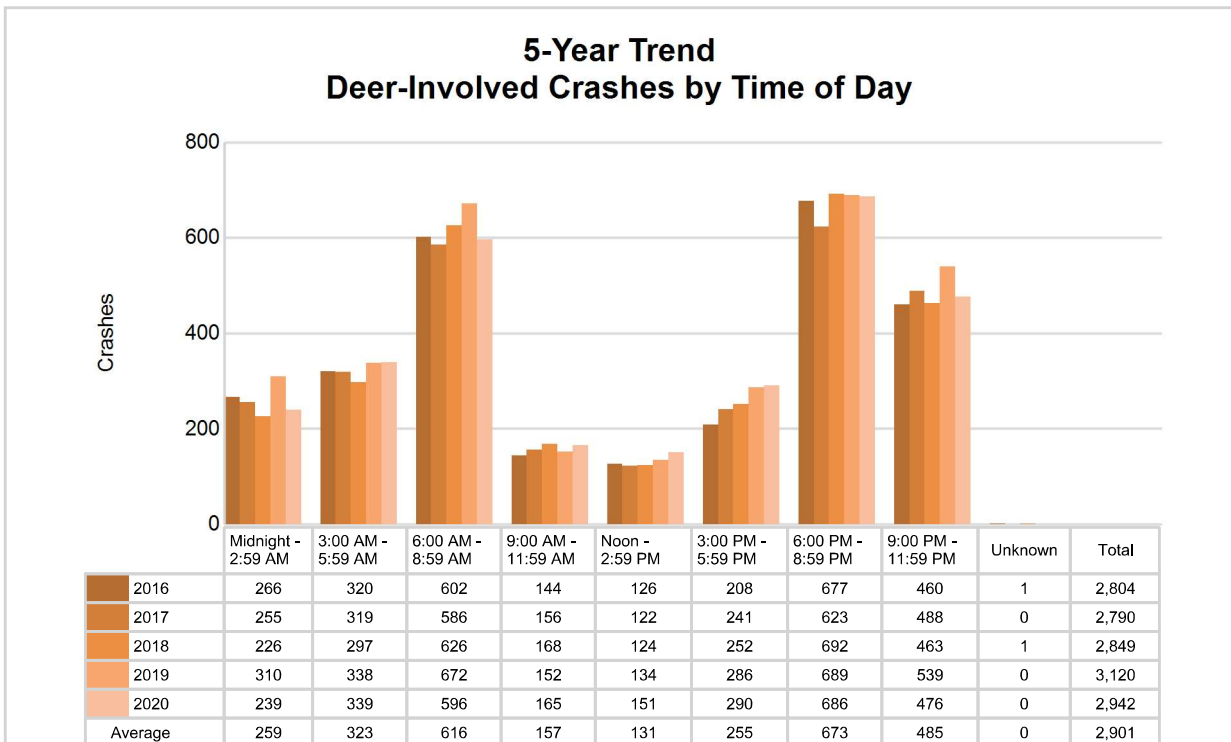


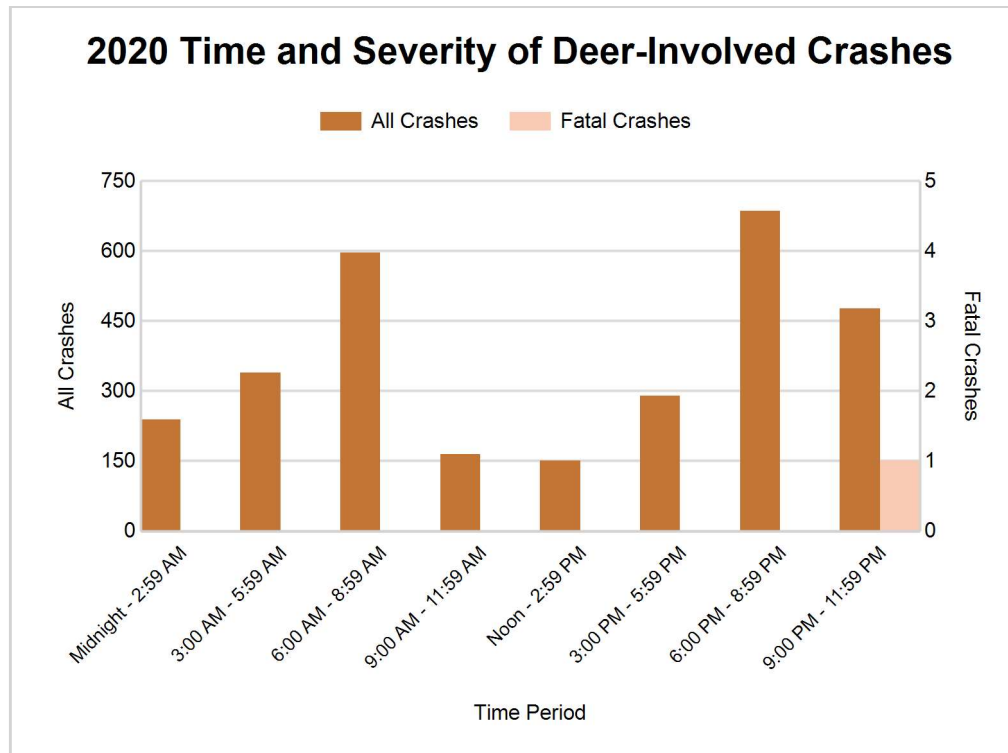
## MSP District 2 - Metro (continued)

### 5-Year Trend - Deer-Involved Crashes by Time of Day

Time of Day	2016		2017		2018		2019		2020	
	Total Crashes	Fatal Crashes	Total Crashes	Fatal Crashes	Total Crashes	Fatal Crashes	Total Crashes	Fatal Crashes	Total Crashes	Fatal Crashes
Midnight - 2:59 AM	266	0	255	1	226	0	310	0	239	0
3:00 AM - 5:59 AM	320	0	319	0	297	0	338	0	339	0
6:00 AM - 8:59 AM	602	0	586	0	626	0	672	1	596	0
9:00 AM - 11:59 AM	144	0	156	0	168	0	152	0	165	0
Noon - 2:59 PM	126	0	122	0	124	0	134	0	151	0
3:00 PM - 5:59 PM	208	0	241	0	252	0	286	0	290	0
6:00 PM - 8:59 PM	677 †	0	623 †	0	692 †	0	689 †	0	686 †	0
9:00 PM - 11:59 PM	460	0	488	0	463	0	539	0	476	1
Unknown	1	0	0	0	1	0	0	0	0	0
<b>Total</b>	<b>2,804</b>	<b>0</b>	<b>2,790</b>	<b>1</b>	<b>2,849</b>	<b>0</b>	<b>3,120</b>	<b>1</b>	<b>2,942</b>	<b>1</b>

Note: † Indicates that the highest number of total crashes reported in the 5-year period occurred in the same time period





#### 2020 - Reported Motor Vehicle Crashes by County

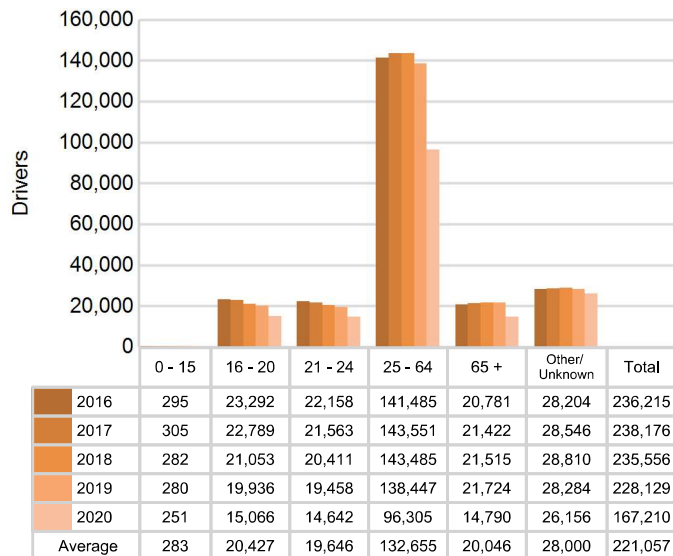
County	Crashes											Persons	
	Total	Fatal	Injury	Property Damage	Inter-state	US Route	State Route	Local Street	Alcohol-Involved	Drug-Involved	Deer-Involved	Fatalities	Injuries
Macomb	17,796	40	3,816	13,940	1,729	0	4,829	11,206	590	196	636	41	5,211
Oakland	26,316	55	4,962	21,299	3,688	1,425	4,445	16,724	915	300	1,854	62	6,563
Wayne	44,017	234	10,561	33,222	5,680	2,493	7,942	27,854	1,338	394	452	252	15,051
<b>Total</b>	<b>88,129</b>	<b>329</b>	<b>19,339</b>	<b>68,461</b>	<b>11,097</b>	<b>3,918</b>	<b>17,216</b>	<b>55,784</b>	<b>2,843</b>	<b>890</b>	<b>2,942</b>	<b>355</b>	<b>26,825</b>

## MSP District 2 - Metro (continued)

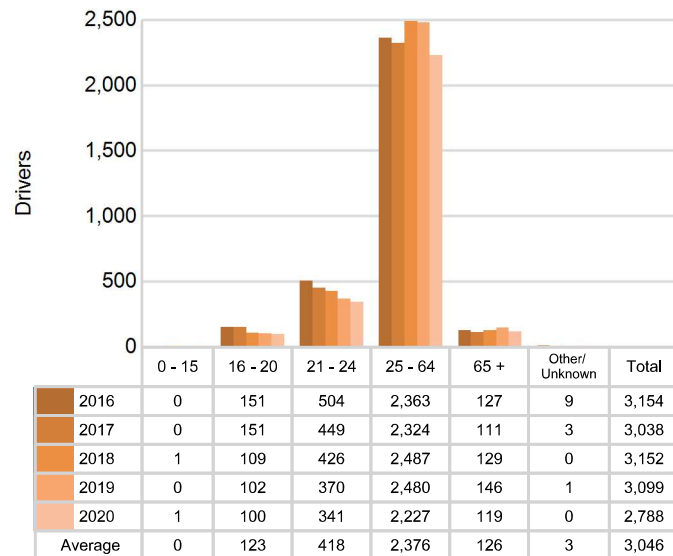
### 5-Year Trend - Drivers in Crashes Coded Drinking by Driver Age

Driver Age	2016		2017		2018		2019		2020	
	Total Drivers in Crashes	Total Drivers Coded Drinking	Total Drivers in Crashes	Total Drivers Coded Drinking	Total Drivers in Crashes	Total Drivers Coded Drinking	Total Drivers in Crashes	Total Drivers Coded Drinking	Total Drivers in Crashes	Total Drivers Coded Drinking
0 - 15	295	0	305	0	282	1	280	0	251	1
16 - 20	23,292	151	22,789	151	21,053	109	19,936	102	15,066	100
21 - 24	22,158	504	21,563	449	20,411	426	19,458	370	14,642	341
25 - 64	141,485	2,363	143,551	2,324	143,485	2,487	138,447	2,480	96,305	2,227
65 +	20,781	127	21,422	111	21,515	129	21,724	146	14,790	119
Unknown	28,204	9	28,546	3	28,810	0	28,284	1	26,156	0
<b>Total</b>	<b>236,215</b>	<b>3,154</b>	<b>238,176</b>	<b>3,038</b>	<b>235,556</b>	<b>3,152</b>	<b>228,129</b>	<b>3,099</b>	<b>167,210</b>	<b>2,788</b>

### 5-Year Trend Total Drivers in Crashes by Age



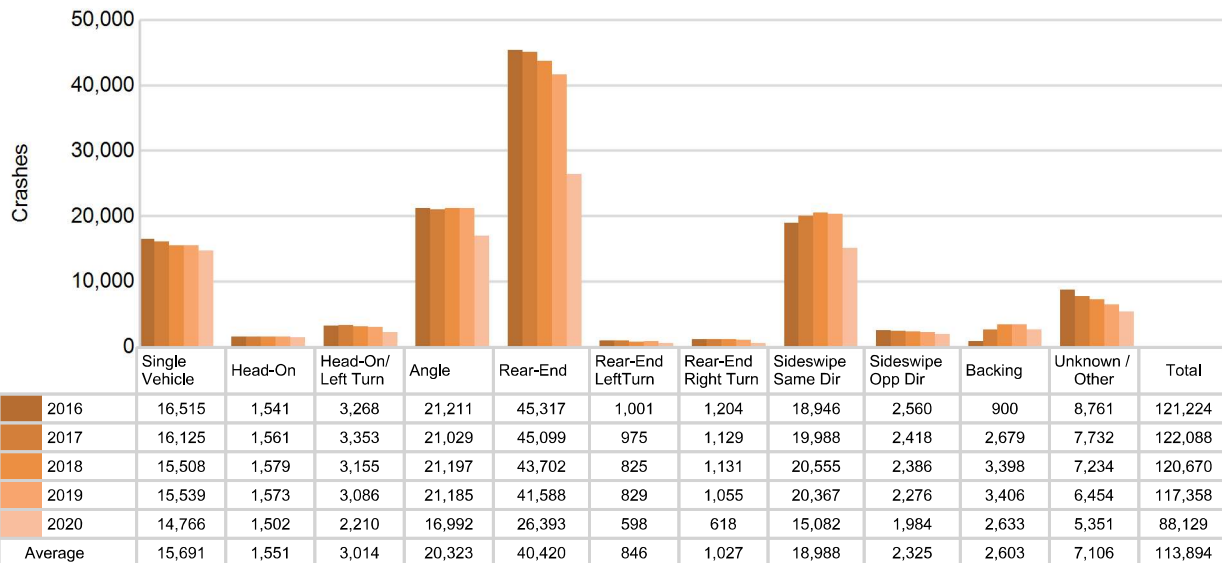
### 5-Year Trend Total Drivers Coded Drinking by Age



## 5-Year Trend - Crashes by Crash Type

Crash Type	2016		2017		2018		2019		2020	
	Total Crashes	Fatal Crashes	Total Crashes	Fatal Crashes	Total Crashes	Fatal Crashes	Total Crashes	Fatal Crashes	Total Crashes	Fatal Crashes
Single motor vehicle	16,515	165	16,125	106	15,508	125	15,539	130	14,766	161
Head-on	1,541	24	1,561	33	1,579	19	1,573	19	1,502	19
Head-on / left turn	3,268	20	3,353	6	3,155	7	3,086	14	2,210	12
Angle	21,211	51	21,029	44	21,197	37	21,185	56	16,992	65
Rear-end	45,317	37	45,099	25	43,702	26	41,588	16	26,393	34
Rear-end left turn	1,001	1	975	0	825	0	829	0	598	1
Rear-end right turn	1,204	0	1,129	0	1,131	0	1,055	0	618	0
Sideswipe same direction	18,946	6	19,988	9	20,555	8	20,367	7	15,082	11
Sideswipe opposite direction	2,560	6	2,418	3	2,386	4	2,276	2	1,984	8
Backing	900	0	2,679	0	3,398	0	3,406	0	2,633	0
Other / Unknown	8,761	11	7,732	28	7,234	32	6,454	20	5,351	18
Uncoded and Errors	11	0	0	0	0	0	0	0	0	0
<b>Total</b>	<b>121,235</b>	<b>321</b>	<b>122,088</b>	<b>254</b>	<b>120,670</b>	<b>258</b>	<b>117,358</b>	<b>264</b>	<b>88,129</b>	<b>329</b>

## 5-Year Trend Crashes by Crash Type



**2020 - Bodily Alcohol Concentration (BAC) Results Among All Vehicle Drivers in Alcohol-Involved Crashes by Age**

Age Group	Drivers				BAC Result Range for Drivers Coded Drinking				
	Total Drivers in Alcohol-Involved Crashes	Total Drivers Tested in all Crashes	Total Drivers Coded Drinking, Tested	Total Drivers Coded Drinking	BAC = 0.00	BAC 0.01 g/dL to 0.07 g/dL	BAC 0.08 g/dL to 0.16 g/dL	BAC 0.17 g/dL and Above	BAC Not Reported
0 - 15	1	1	1	1	0	0	0	0	1
16 - 20	221	137	85	100	0	10	28	22	40
21 - 24	468	372	292	341	0	19	102	105	115
25 - 64	3,322	2,383	1,913	2,227	1	101	525	808	792
65 +	215	130	98	119	1	8	33	26	51
Unknown	634	8	0	0	0	0	0	0	0
<b>Total</b>	<b>4,861</b>	<b>3,031</b>	<b>2,389</b>	<b>2,788</b>	<b>2</b>	<b>138</b>	<b>688</b>	<b>961</b>	<b>999</b>

Notes: BAC measured in grams (g) per deciliter (dL).

BAC may not be reported if drivers are not tested or if the results are not available immediately (as in the case of a blood test).

A driver may be coded by the officer as drinking even though no test is administered.

**Alcohol-Involved Crashes**

In 2020, there were 4,861 drivers in alcohol-involved crashes; 2,788 (57.4%) of those drivers were coded as had-been-drinking by the officer on the crash form.

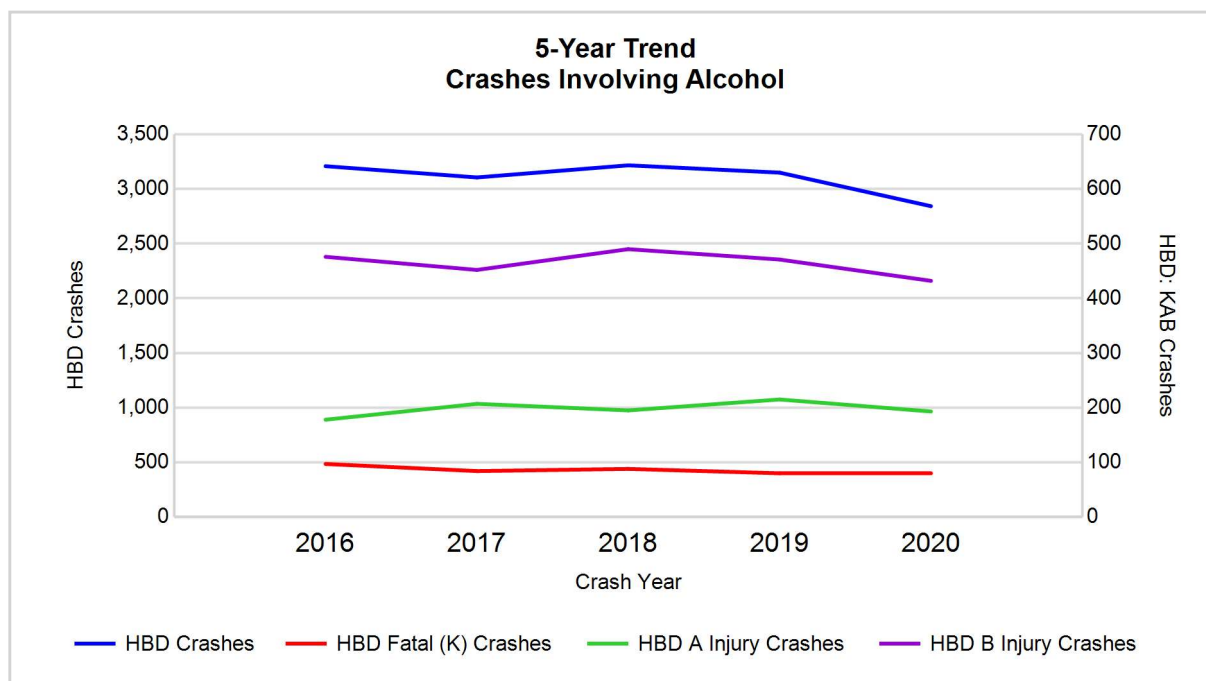
- 1,649 (59.1%) of the 2,788 drivers had a blood alcohol concentration (BAC) of 0.08 g/dL (grams per deciliter) or greater, and 961 (58.3%) of the 1,649 drivers had a BAC at or above 0.17 g/dL.
- 2,389 (85.7%) of the 2,788 drivers were coded as had-been-drinking and were tested for alcohol consumption.

**5-Year Trend - Crashes Involving Alcohol**

Year	All Crashes	HBD Crashes	% HBD	Fatal Crashes	HBD Fatal Crashes	% HBD	A Injury Crashes	HBD A Injury Crashes	% HBD	B Injury Crashes	HBD B Injury Crashes	% HBD
2016	121,235	3,209	2.6	321	97	30.2	1,360	178	13.1	6,400	476	7.4
2017	122,088	3,106	2.5	254	84	33.1	1,544	207	13.4	7,008	452	6.4
2018	120,670	3,217	2.7	258	88	34.1	1,428	195	13.7	6,861	490	7.1
2019	117,358	3,150	2.7	264	80	30.3	1,402	215	15.3	6,877	471	6.8
2020	88,129	2,843	3.2	329	80	24.3	1,384	193	13.9	5,904	432	7.3

Note: \* Indicates that the most recent year is the lowest number or percentage reported in the 5-year period in that column

\*\* Indicates that the most recent year is the highest number or percentage reported in the 5-year period in that column

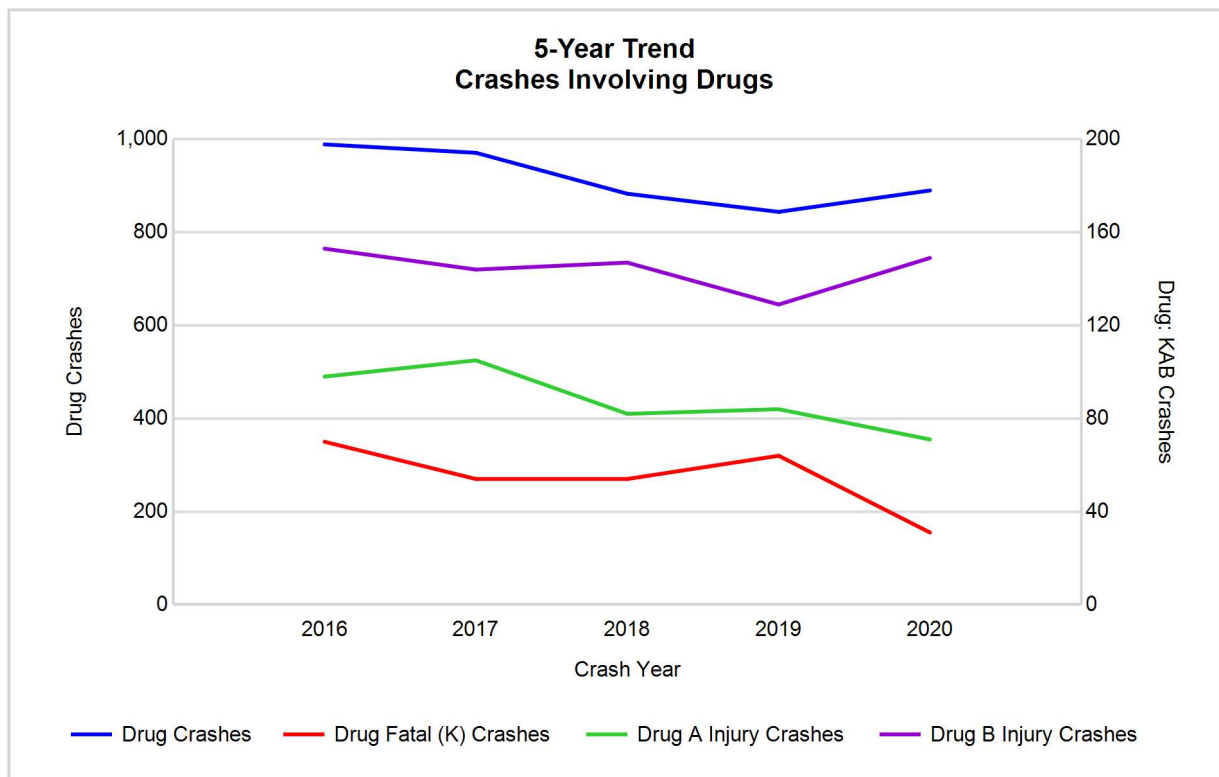


Note: Had-Been-Drinking (HBD)

## 5-Year Trend - Crashes Involving Drugs

Year	All Crashes	Drug Crashes	% Drug	Fatal Crashes	Drug Fatal Crashes	% Drug	A Injury Crashes	Drug A Injury Crashes	% Drug	B Injury Crashes	Drug B Injury Crashes	% Drug
2016	121,235	989	0.8	321	70	21.8	1,360	98	7.2	6,400	153	2.4
2017	122,088	971	0.8	254	54	21.3	1,544	105	6.8	7,008	144	2.1
2018	120,670	883	0.7	258	54	20.9	1,428	82	5.7	6,861	147	2.1
2019	117,358	844	0.7	264	64	24.2	1,402	84	6.0	6,877	129	1.9
2020	88,129	890	1.0	329	31	9.4	1,384	71	5.1	5,904	149	2.5

Note: \* Indicates that the most recent year is the lowest number or percentage reported in the 5-year period in that column  
 \*\* Indicates that the most recent year is the highest number or percentage reported in the 5-year period in that column

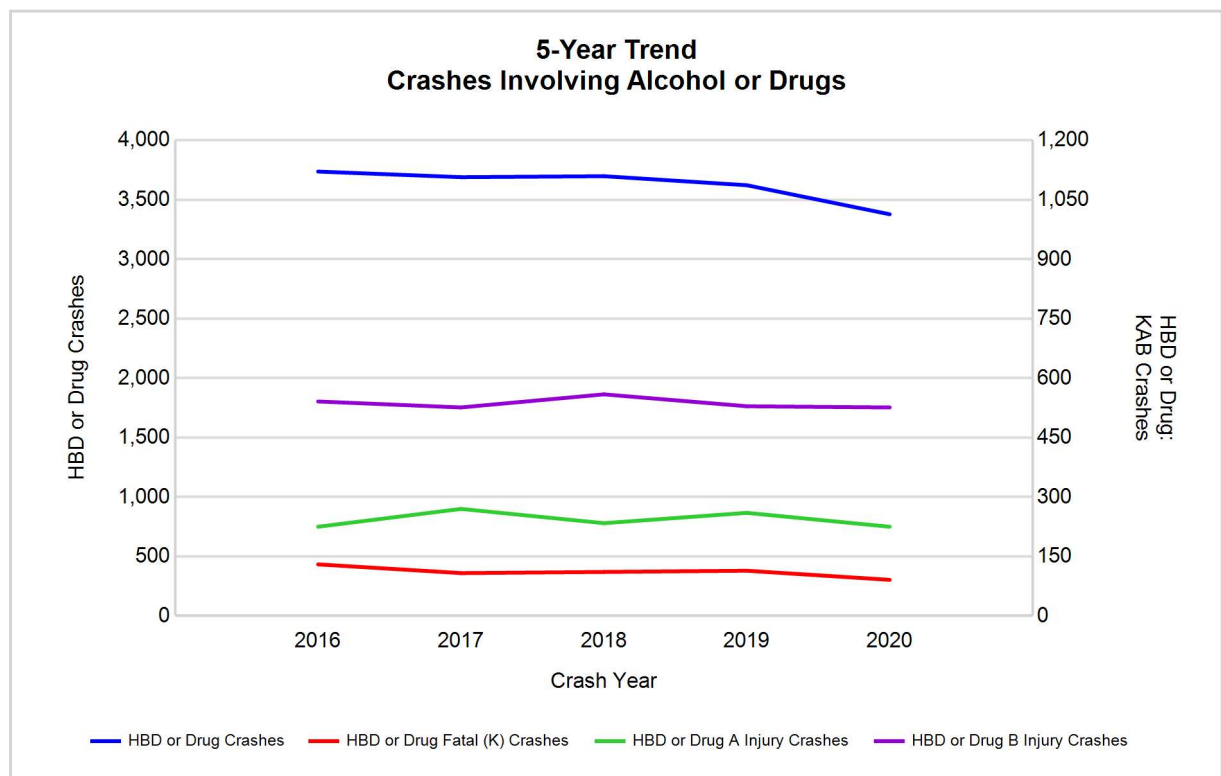


## 5-Year Trend - Crashes Involving Alcohol or Drugs

Year	All Crashes	HBD or Drug Crashes	% HBD or Drug	Fatal Crashes	HBD or Drug Fatal Crashes	% HBD or Drug	A Injury Crashes	HBD or Drug A Injury Crashes	% HBD or Drug	B Injury Crashes	HBD or Drug B Injury Crashes	% HBD or Drug
2016	121,235	3,737	3.1	321	130	40.5	1,360	225	16.5	6,400	541	8.5
2017	122,088	3,690	3.0	254	108	42.5	1,544	270	17.5	7,008	526	7.5
2018	120,670	3,698	3.1	258	111	43.0	1,428	234	16.4	6,861	559	8.1
2019	117,358	3,622	3.1	264	114	43.2	1,402	260	18.5	6,877	529	7.7
2020	88,129	3,378	3.8	329	91	27.7	1,384	225	16.3	5,904	526	8.9

Note: \* Indicates that the most recent year is the lowest number or percentage reported in the 5-year period in that column

\*\* Indicates that the most recent year is the highest number or percentage reported in the 5-year period in that column



Note: Had-Been-Drinking (HBD)



2020 - Restraints Worn Among Vehicle Drivers and Injured Passengers by Vehicle Type

Vehicle Type	Total Occupants			Fatalities			A - Suspected Serious			B - Suspected Minor			C - Possible Injury			No Injury		
	Total	Used Restraint	%	Total	Used Restraint	%	Total	Used Restraint	%	Total	Used Restraint	%	Total	Used Restraint	%	Total	Used Restraint	%
Passenger car, SUV, van	145,235	112,970	77.8	177	56	31.6	1,058	624	59.0	5,816	4,858	83.5	16,147	13,497	83.6	103,648	93,935	90.6
Motor home	258	201	77.9	0	0	0.0	3	0	0.0	7	6	85.7	20	18	90.0	198	177	89.4
Pickup truck	14,051	11,572	82.4	12	8	66.7	65	45	69.2	383	332	86.7	902	823	91.2	10,918	10,364	94.9
Small truck under 10,000 lbs. GVWR	664	484	72.9	0	0	0.0	6	4	66.7	12	7	58.3	46	37	80.4	483	436	90.3
Motorcycle	1,014	520	51.3	52	24	46.2	214	102	47.7	333	186	55.9	164	100	61.0	191	108	56.5
Moped / goped	170	31	18.2	3	0	0.0	28	5	17.9	61	15	24.6	36	6	16.7	23	5	21.7
Go-cart / golf cart	18	3	16.7	0	0	0.0	1	0	0.0	5	0	0.0	7	1	14.3	5	2	40.0
Snowmobile	1	1	100.0	0	0	0.0	0	0	0.0	1	1	100.0	0	0	0.0	0	0	0.0
Off-Road Vehicle - ORV / All-Terrain Vehicle - ATV	92	7	7.6	3	0	0.0	22	1	4.5	26	2	7.7	9	0	0.0	17	4	23.5
Other	553	273	49.4	3	0	0.0	6	1	16.7	24	10	41.7	53	30	56.6	316	232	73.4
Truck/bus over 10,000 lbs.	5,054	4,210	83.3	1	1	100.0	11	6	54.5	58	43	74.1	223	105	47.1	4,399	4,055	92.2
Unknown	6,513	1	0.0	0	0	0.0	0	0	0.0	2	0	0.0	3	1	33.3	12	0	0.0
Total	173,623	130,273	75.0	251	89	35.5	1,414	788	55.7	6,728	5,460	81.2	17,610	14,618	83.0	120,210	109,318	90.9

Note: Restraint Use includes shoulder belt only used, lap belt only used, both lap and shoulder belts used, child restraint used, restraint failure, and helmet worn.

2020 - Restraints Worn Among Vehicle Drivers and Injured Passengers by Age

Age Group	Total Occupants			Fatalities			A - Suspected Serious			B - Suspected Minor			C - Possible Injury			No Injury		
	Total	Used Restraint	%	Total	Used Restraint	%	Total	Used Restraint	%	Total	Used Restraint	%	Total	Used Restraint	%	Total	Used Restraint	%
0 - 15	1,542	1,171	75.9	12	3	25.0	56	21	37.5	253	175	69.2	1,031	820	79.5	180	152	84.4
16 - 20	16,145	14,422	89.3	18	2	11.1	140	71	50.7	836	659	78.8	2,062	1,656	80.3	12,993	12,034	92.6
21 - 24	15,343	13,322	86.8	38	11	28.9	176	91	51.7	789	616	78.1	1,865	1,449	77.7	12,333	11,155	90.4
25 - 64	99,184	87,266	88.0	147	48	32.7	939	525	55.9	4,130	3,338	80.8	10,931	9,126	83.5	81,841	74,229	90.7
65 +	15,248	14,077	92.3	36	25	69.4	99	80	80.8	720	672	93.3	1,716	1,566	91.3	12,537	11,734	93.6
Unknown	26,161	15	0.1	0	0	0.0	4	0	0.0	0	0	0.0	5	1	20.0	326	14	4.3
Total	173,623	130,273	75.0	251	89	35.5	1,414	788	55.7	6,728	5,460	81.2	17,610	14,618	83.0	120,210	109,318	90.9

Note: Restraint Use includes shoulder belt only used, lap belt only used, both lap and shoulder belts used, child restraint used, restraint failure, and helmet worn.

## 5-Year Trend - Restraint Use Among Drivers

Restraint Use	2016			2017			2018			2019			2020		
	Drivers	Fatal Drivers	Injured Drivers	Drivers	Fatal Drivers	Injured Drivers	Drivers	Fatal Drivers	Injured Drivers	Drivers	Fatal Drivers	Injured Drivers	Drivers	Fatal Drivers	Injured Drivers
No belts available	340	0	52	241	1	39	176	0	32	227	0	37	199	1	56
Shoulder belt only used	750	1	100	883	1	113	616	0	99	678	2	112	585	0	101
Lap belt only used	281	0	32	248	1	25	188	0	27	194	0	34	145	0	24
Both lap & shoulder belts used	195,277	57	22,816	194,373	55	22,549	190,964	56	21,769	183,257	45	21,262	124,405	50	15,782
No belts used	1,181	42	438	971	28	422	891	30	373	914	39	390	980	38	427
Child restraint used	12	0	1	9	0	1	1	0	0	2	0	0	0	0	0
Child restraint not used, unavailable or improper use	3	0	0	0	0	0	0	0	0	0	0	0	0	0	0
Restraint failure	36	0	8	33	0	9	24	0	5	26	0	4	28	0	3
Restraint use unknown	29,419	37	1,162	34,895	34	1,436	36,740	28	1,687	36,969	31	1,775	35,388	43	2,181
Helmet worn	725	24	512	666	15	477	569	16	414	575	20	405	536	24	397
Helmet not worn	487	17	282	310	16	230	332	20	253	349	17	267	471	26	363
Helmet use unknown	98	6	36	78	5	46	87	3	55	75	4	45	102	7	66
Uncoded & errors	7,606	0	16	5,469	0	0	4,968	0	0	4,863	0	0	4,371	0	1
<b>Total</b>	<b>236,215</b>	<b>184</b>	<b>25,455</b>	<b>238,176</b>	<b>156</b>	<b>25,347</b>	<b>235,556</b>	<b>153</b>	<b>24,714</b>	<b>228,129</b>	<b>158</b>	<b>24,331</b>	<b>167,210</b>	<b>189</b>	<b>19,401</b>

## 5-Year Trend - Restraint Use Among Drivers Coded Drinking

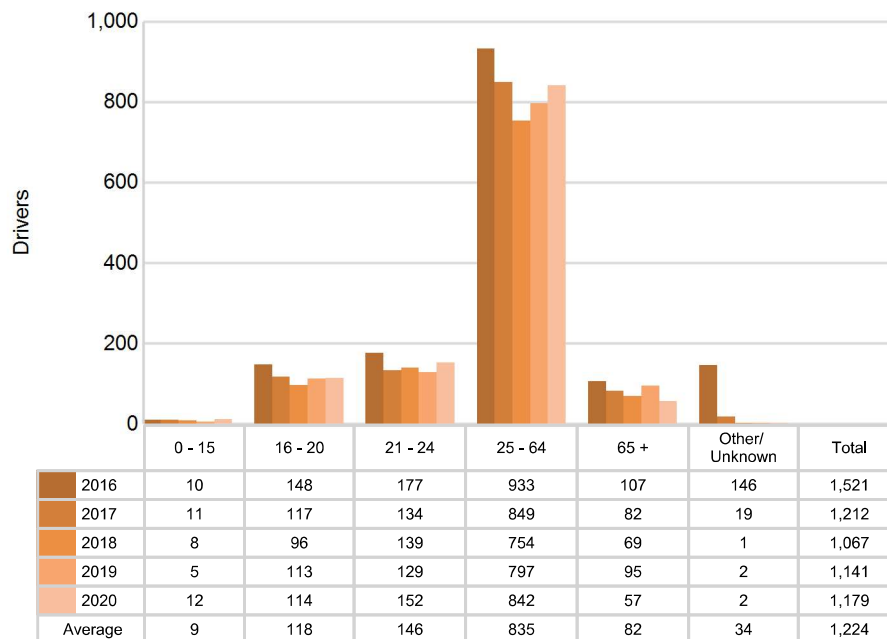
Restraint Use	2016			2017			2018			2019			2020		
	Drivers	Fatal Drivers	Injured Drivers	Drivers	Fatal Drivers	Injured Drivers	Drivers	Fatal Drivers	Injured Drivers	Drivers	Fatal Drivers	Injured Drivers	Drivers	Fatal Drivers	Injured Drivers
No belts available	9	0	4	4	0	0	8	0	3	2	0	2	7	0	3
Shoulder belt only used	15	0	3	7	0	2	5	0	1	9	0	3	5	0	2
Lap belt only used	2	0	1	1	0	0	3	0	1	3	0	2	3	0	1
Both lap & shoulder belts used	2,410	6	600	2,318	13	552	2,393	5	588	2,303	7	583	1,968	4	507
No belts used	172	18	94	120	9	71	133	9	84	146	14	82	147	7	94
Child restraint used	0	0	0	1	0	0	0	0	0	0	0	0	0	0	0
Child restraint not used, unavailable or improper use	0	0	0	0	0	0	0	0	0	0	0	0	0	0	0
Restraint failure	0	0	0	0	0	0	0	0	0	0	0	0	2	0	0
Restraint use unknown	486	11	123	537	10	155	555	16	168	568	9	174	592	6	176
Helmet worn	21	2	18	16	1	14	16	3	11	16	8	6	15	2	11
Helmet not worn	35	5	27	28	3	24	36	7	25	48	7	39	48	4	37
Helmet use unknown	2	1	1	4	0	2	3	0	2	4	0	3	1	0	1
Uncoded & errors	2	0	0	2	0	0	0	0	0	0	0	0	0	0	0
<b>Total</b>	<b>3,154</b>	<b>43</b>	<b>871</b>	<b>3,038</b>	<b>36</b>	<b>820</b>	<b>3,152</b>	<b>40</b>	<b>883</b>	<b>3,099</b>	<b>45</b>	<b>894</b>	<b>2,788</b>	<b>23</b>	<b>832</b>

## 5-Year Trend - Seatbelt Not Used Among Drivers by Age

Age Group	2016			2017			2018			2019			2020		
	Drivers	Fatal Drivers	Injured Drivers	Drivers	Fatal Drivers	Injured Drivers	Drivers	Fatal Drivers	Injured Drivers	Drivers	Fatal Drivers	Injured Drivers	Drivers	Fatal Drivers	Injured Drivers
0 - 15	10	0	1	11	0	2	8	0	4	5	0	0	12	0	8
16 - 20	148	2	71	117	5	52	96	4	44	113	1	51	114	1	52
21 - 24	177	6	79	134	5	58	139	3	63	129	6	57	152	9	75
25 - 64	933	28	310	849	14	326	754	20	278	797	22	291	842	26	333
65 +	107	6	27	82	5	23	69	3	16	95	10	28	57	3	15
Unknown	146	0	2	19	0	0	1	0	0	2	0	0	2	0	0
<b>Total</b>	<b>1,521</b>	<b>42</b>	<b>490</b>	<b>1,212</b>	<b>29</b>	<b>461</b>	<b>1,067</b>	<b>30</b>	<b>405</b>	<b>1,141</b>	<b>39</b>	<b>427</b>	<b>1,179</b>	<b>39</b>	<b>483</b>

Note: Seatbelt Not Used includes no belts available or no belts used.

## 5-Year Trend Driver Seatbelt Not Used

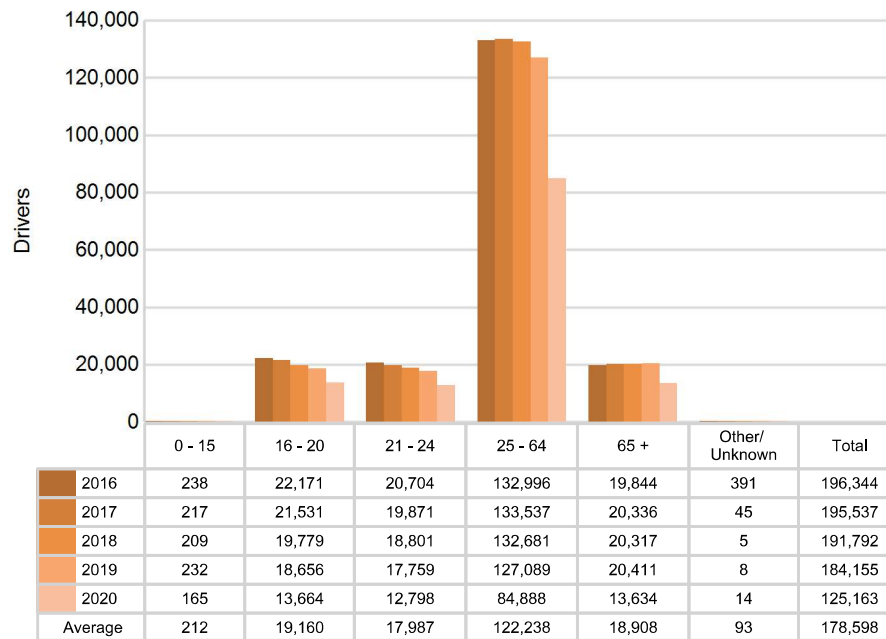


## 5-Year Trend - Seatbelt Used Among Drivers by Age

Age Group	2016			2017			2018			2019			2020		
	Drivers	Fatal Drivers	Injured Drivers	Drivers	Fatal Drivers	Injured Drivers	Drivers	Fatal Drivers	Injured Drivers	Drivers	Fatal Drivers	Injured Drivers	Drivers	Fatal Drivers	Injured Drivers
0 - 15	238	1	16	217	0	17	209	0	19	232	0	16	165	0	17
16 - 20	22,171	3	2,276	21,531	5	2,201	19,779	2	2,038	18,656	3	1,862	13,664	1	1,636
21 - 24	20,704	4	2,456	19,871	4	2,320	18,801	4	2,174	17,759	5	2,107	12,798	4	1,653
25 - 64	132,996	32	15,562	133,537	35	15,517	132,681	31	15,018	127,089	23	14,800	84,888	29	10,711
65 +	19,844	18	2,640	20,336	13	2,638	20,317	19	2,650	20,411	16	2,627	13,634	16	1,893
Unknown	391	0	6	45	0	3	5	0	1	8	0	0	14	0	0
<b>Total</b>	<b>196,344</b>	<b>58</b>	<b>22,956</b>	<b>195,537</b>	<b>57</b>	<b>22,696</b>	<b>191,792</b>	<b>56</b>	<b>21,900</b>	<b>184,155</b>	<b>47</b>	<b>21,412</b>	<b>125,163</b>	<b>50</b>	<b>15,910</b>

Note: Seatbelt Used includes shoulder belt only used, lap belt only used, both lap and shoulder belts used, and restraint failure.

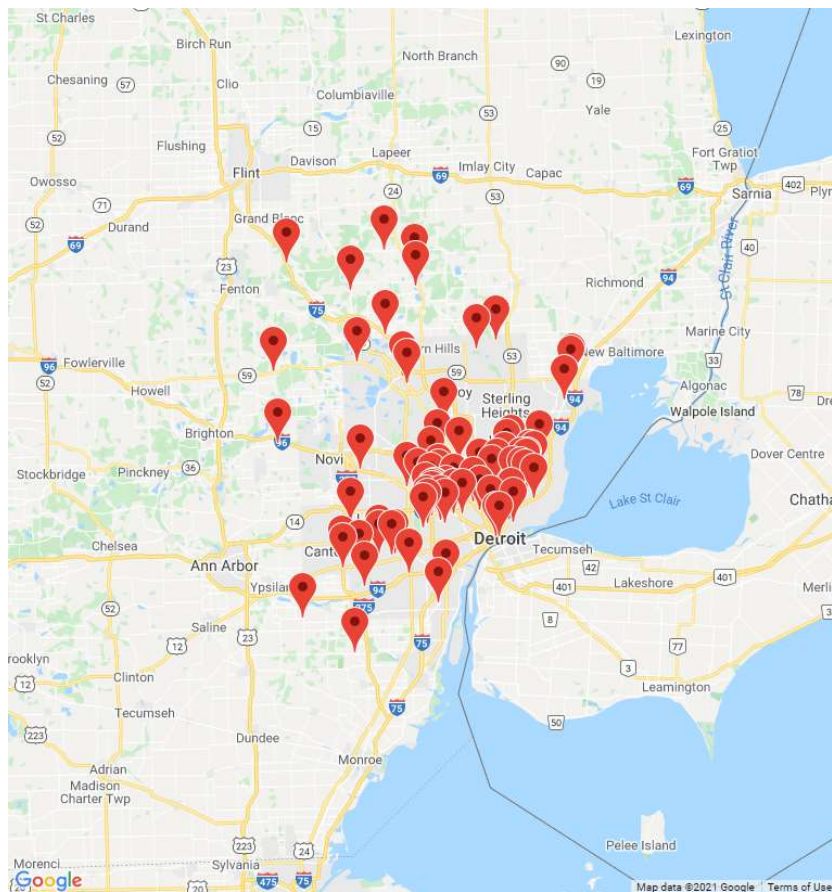
### 5-Year Trend Driver Seatbelt Used



## 5-Year Trend - Drivers in Crashes by Hazardous Action

Hazardous Action	2016		2017		2018		2019		2020	
	Total Drivers in Crashes	Drivers in Fatal Crashes	Total Drivers in Crashes	Drivers in Fatal Crashes	Total Drivers in Crashes	Drivers in Fatal Crashes	Total Drivers in Crashes	Drivers in Fatal Crashes	Total Drivers in Crashes	Drivers in Fatal Crashes
None	111,862	229	111,142	196	109,103	176	105,811	173	74,682	212
Speed too fast	7,823	59	7,535	41	7,405	47	7,342	46	6,333	54
Speed too slow	77	1	48	0	60	1	51	0	44	0
Failed to yield	20,369	23	20,748	17	21,148	21	20,760	25	14,439	23
Disregard traffic control	5,020	22	4,950	13	4,985	20	4,959	19	4,722	26
Drove wrong way	215	2	200	5	233	0	226	0	230	4
Drove left of center	970	19	956	16	889	16	885	16	784	8
Improper passing	1,178	4	1,286	3	1,365	2	1,462	1	1,087	1
Improper lane use	7,200	3	7,531	3	7,506	3	7,613	2	5,413	5
Improper turn	2,378	2	2,490	3	2,460	2	2,579	4	1,892	2
Improper/no signal	177	0	181	0	152	0	177	0	90	0
Improper backing	3,211	0	3,098	0	3,180	1	3,199	0	2,381	1
Unable to stop in assured clear distance	40,955	17	40,407	13	38,894	17	37,342	12	22,402	22
Other	7,849	31	7,618	26	7,804	26	7,447	32	5,927	30
Unknown	15,860	57	20,466	54	21,151	49	19,378	48	18,997	69
Reckless driving	1,212	27	1,020	28	958	26	906	29	1,005	62
Careless/negligent driving	5,229	26	4,187	20	3,980	22	3,784	14	3,131	24
Uncoded & errors	4,630	3	4,313	8	4,283	0	4,208	5	3,651	3
<b>Total</b>	<b>236,215</b>	<b>525</b>	<b>238,176</b>	<b>446</b>	<b>235,556</b>	<b>429</b>	<b>228,129</b>	<b>426</b>	<b>167,210</b>	<b>546</b>

## MSP District 2 - Metro (continued)



The picture above represents all 2020 alcohol-involved fatal crashes in District 2.

In 2020, there were 2,843 alcohol-involved crashes in District 2:

80	K - Fatal Crashes
193	A - Suspected Serious Injury Crashes
432	B - Suspected Minor Injury Crashes
494	C - Possible Injury Crashes
1,644	O - Property Damage Only/No Injury Crashes

### Office of Highway Safety Planning

**Physical Address:**

7150 Harris Drive  
Dimondale, Michigan 48821

**Mailing Address:**

P.O. Box 30634  
Lansing, Michigan 48909

Phone: (517) 284-3332

Fax: (517) 284-3338

**Find us on the web:**

[MichiganTrafficCrashFacts.org](http://MichiganTrafficCrashFacts.org)

