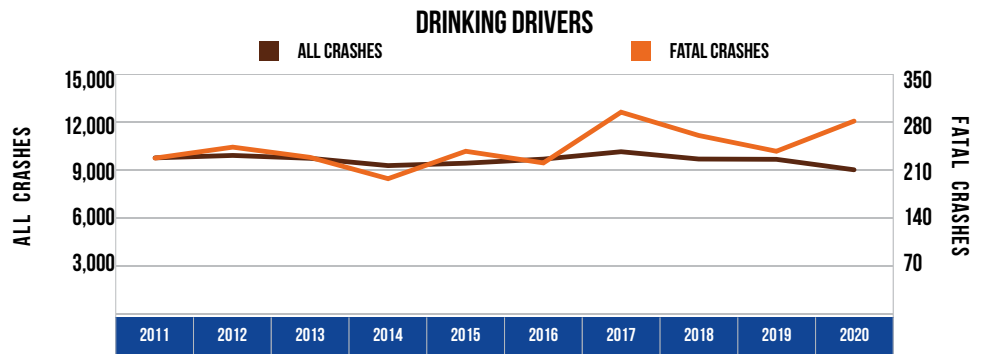


## 10 YEAR TRENDS-STATEWIDE (CONTINUED)

### DRINKING DRIVERS

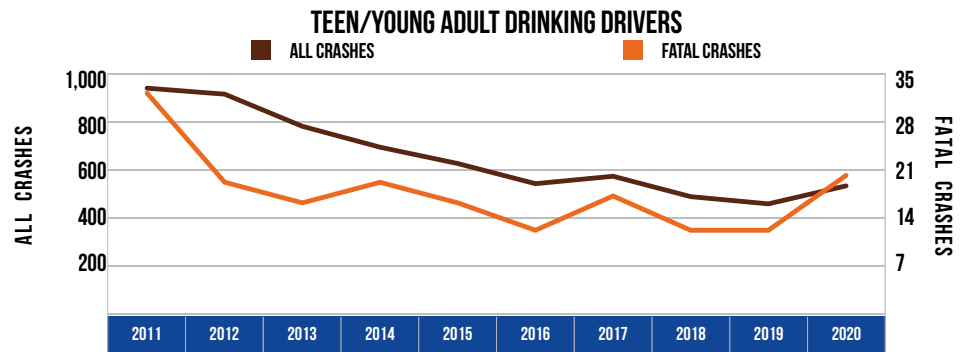
Year	All Crashes	Fatal Crashes
2011	9,701	226
2012	9,853	242
2013	9,673	227
2014	9,218	196
2015	9,368	236
2016	9,623	219
2017	10,085	293
2018	9,628	259
2019	9,610	236
2020	8,956	280



Drinking driver involvement in all crashes decreased by 7.7 percent from 2011. Drinking driver involvement in fatal crashes increased by 23.9 percent from 2011.

### TEEN/YOUNG ADULT DRINKING DRIVERS (AGE 16-20)

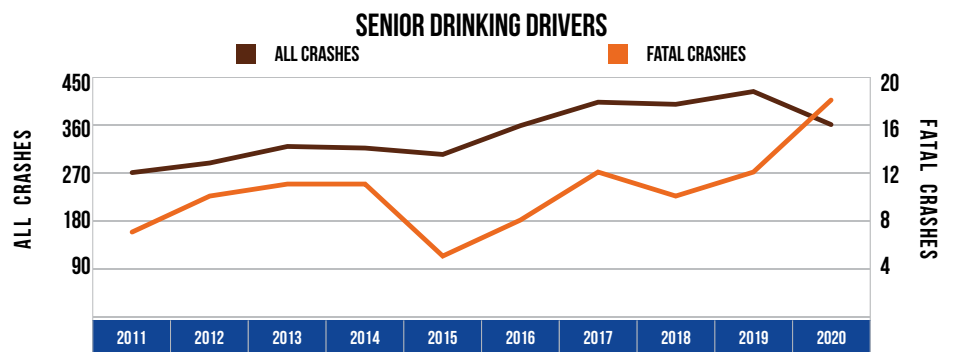
Year	All Crashes	Fatal Crashes
2011	935	32
2012	910	19
2013	776	16
2014	689	19
2015	621	16
2016	537	12
2017	568	17
2018	483	12
2019	453	12
2020	528	20



The number of teen/young adult drinking drivers (age 16-20) in all crashes decreased by 43.5 percent, and their involvement in fatal crashes decreased by 37.5 percent from 2011.

### SENIOR DRINKING DRIVERS (AGE 65 & OVER)

Year	All Crashes	Fatal Crashes
2011	269	7
2012	287	10
2013	318	11
2014	315	11
2015	303	5
2016	357	8
2017	401	12
2018	397	10
2019	421	12
2020	359	18



The number of senior drinking drivers (age 65 and over) in all crashes increased by 33.5 percent from 2011. Their involvement in fatal crashes increased by 157.1 percent from 2011.