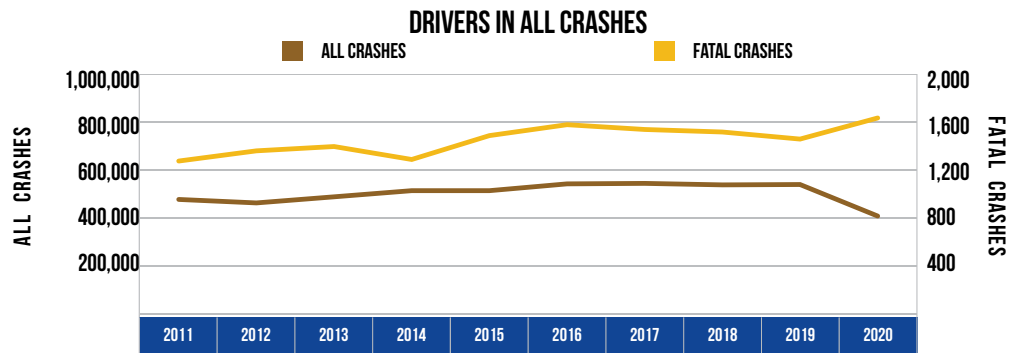


10 YEAR TRENDS-STATEWIDE (CONTINUED)

DRIVERS IN ALL CRASHES

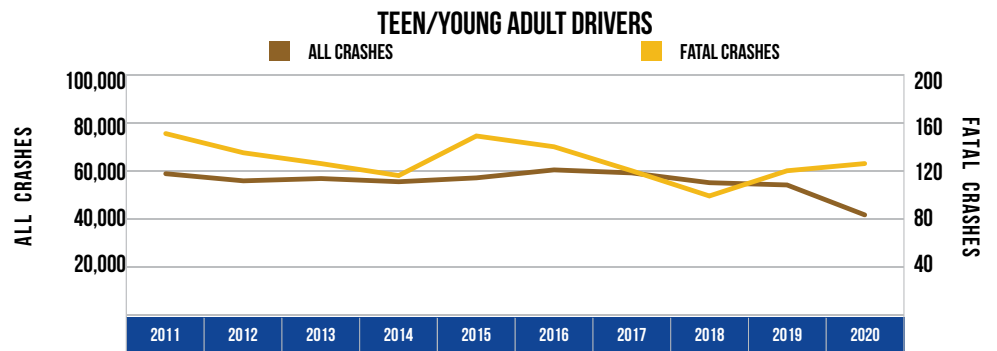
Year	All Crashes	Fatal Crashes
2011	473,501	1,267
2012	459,030	1,352
2013	484,446	1,388
2014	510,086	1,280
2015	510,074	1,479
2016	538,412	1,570
2017	540,387	1,530
2018	534,223	1,509
2019	535,721	1,450
2020	404,286	1,626



The number of drivers involved in all crashes decreased 14.6 percent over the 10-year period. The number of drivers involved in fatal crashes increased 28.3 percent over the 10-year period.

TEEN/YOUNG ADULT DRIVERS (AGE 16-20)

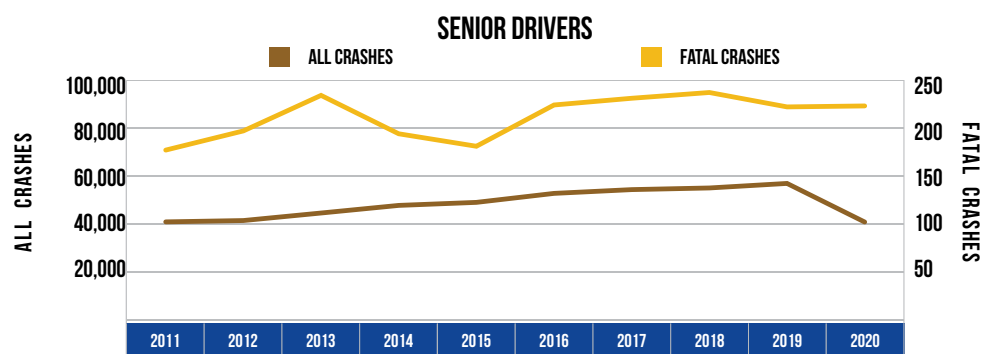
Year	All Crashes	Fatal Crashes
2011	58,279	150
2012	55,307	134
2013	56,264	125
2014	54,935	115
2015	56,544	148
2016	59,865	139
2017	58,607	119
2018	54,530	98
2019	53,586	119
2020	41,119	125



Teen/young adult drivers (age 16-20) represented 6.1 percent of the licensed drivers in 2020. The number of teen/young adult drivers in all crashes has decreased by 29.4 percent since 2011. Their involvement in fatal crashes has decreased 16.7 percent during the same time period.

SENIOR DRIVERS (AGE 65 & OVER)

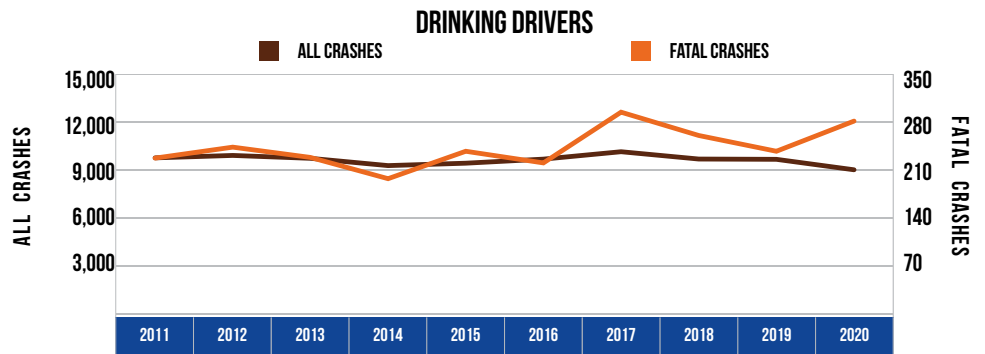
Year	All Crashes	Fatal Crashes
2011	40,495	176
2012	41,047	196
2013	44,183	233
2014	47,356	193
2015	48,615	180
2016	52,362	223
2017	53,934	230
2018	54,621	236
2019	56,515	221
2020	40,432	222



Senior drivers (age 65 and over) represented 22.5 percent of the licensed drivers in 2020. The number of drivers age 65 and over in all crashes has decreased 0.2 percent since 2011. Senior driver involvement in fatal crashes increased 26.1 percent during the same time period.

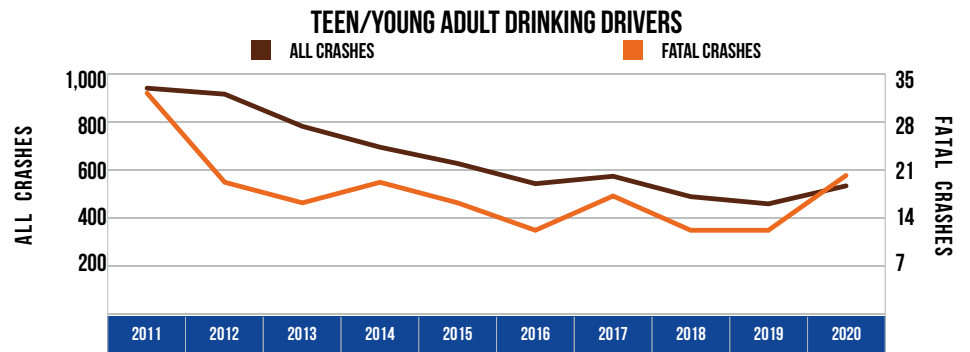
10 YEAR TRENDS-STATEWIDE (CONTINUED)

DRINKING DRIVERS		
Year	All Crashes	Fatal Crashes
2011	9,701	226
2012	9,853	242
2013	9,673	227
2014	9,218	196
2015	9,368	236
2016	9,623	219
2017	10,085	293
2018	9,628	259
2019	9,610	236
2020	8,956	280



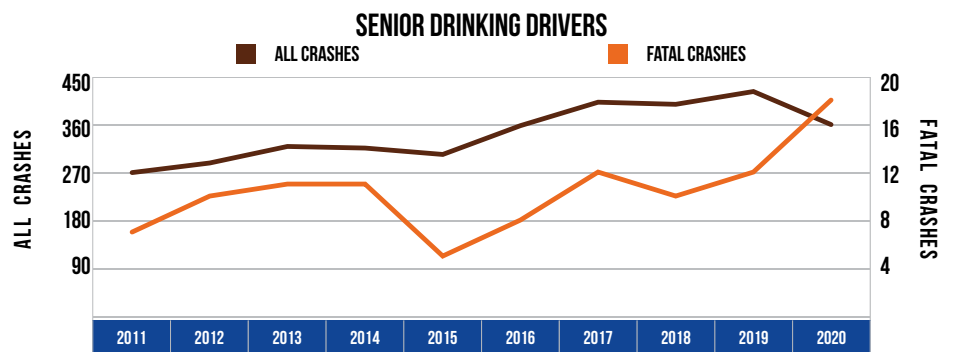
Drinking driver involvement in all crashes decreased by 7.7 percent from 2011. Drinking driver involvement in fatal crashes increased by 23.9 percent from 2011.

TEEN/YOUNG ADULT DRINKING DRIVERS (AGE 16-20)		
Year	All Crashes	Fatal Crashes
2011	935	32
2012	910	19
2013	776	16
2014	689	19
2015	621	16
2016	537	12
2017	568	17
2018	483	12
2019	453	12
2020	528	20



The number of teen/young adult drinking drivers (age 16-20) in all crashes decreased by 43.5 percent, and their involvement in fatal crashes decreased by 37.5 percent from 2011.

SENIOR DRINKING DRIVERS (AGE 65 & OVER)		
Year	All Crashes	Fatal Crashes
2011	269	7
2012	287	10
2013	318	11
2014	315	11
2015	303	5
2016	357	8
2017	401	12
2018	397	10
2019	421	12
2020	359	18



The number of senior drinking drivers (age 65 and over) in all crashes increased by 33.5 percent from 2011. Their involvement in fatal crashes increased by 157.1 percent from 2011.