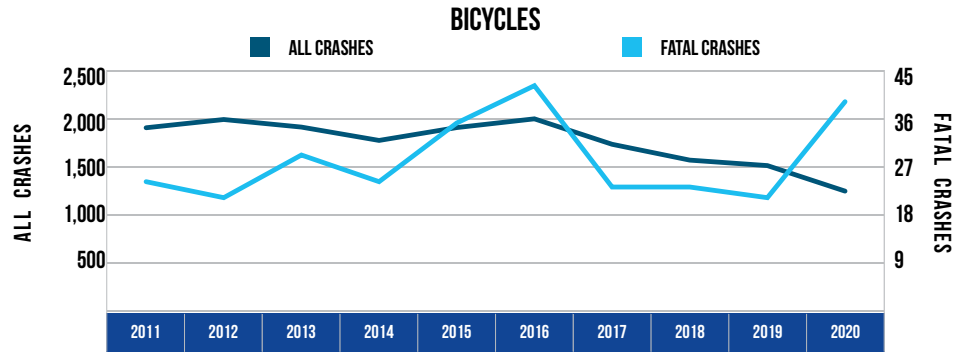


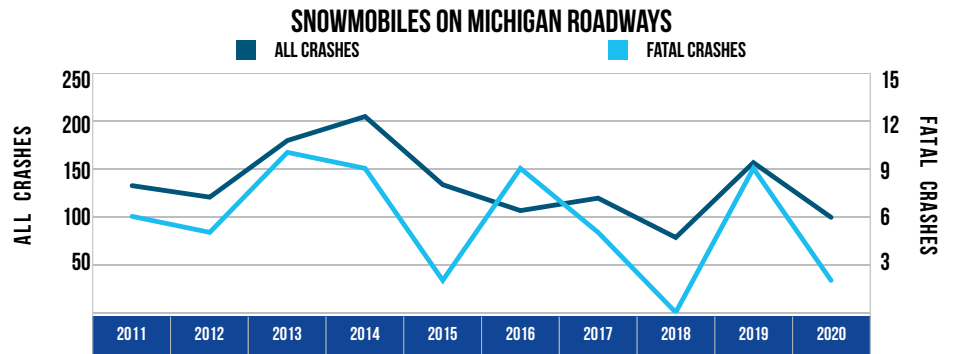
10 YEAR TRENDS-STATEWIDE (CONTINUED)

BICYCLES		
Year	All Crashes	Fatal Crashes
2011	1,895	24
2012	1,981	21
2013	1,902	29
2014	1,763	24
2015	1,897	35
2016	1,988	42
2017	1,723	23
2018	1,558	23
2019	1,501	21
2020	1,235	39



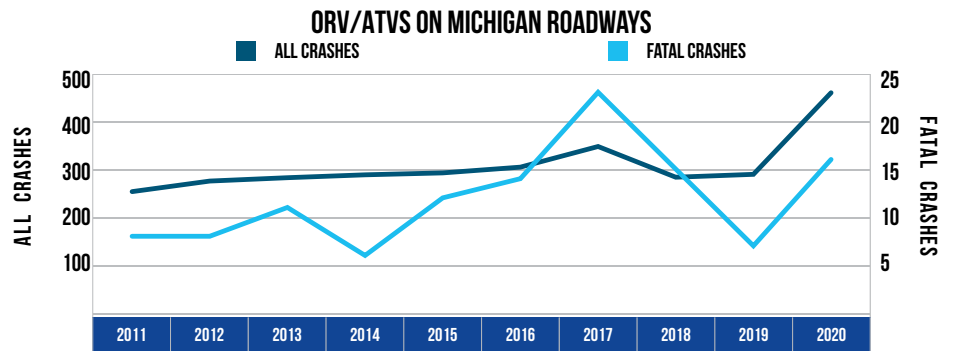
There were 1,235 bicycles involved in crashes in 2020, down 34.8 percent from 2011. There were 39 bicycles involved in fatal crashes in 2020, up 62.5 percent from 2011.

SNOWMOBILES ON MICHIGAN ROADWAYS		
Year	All Crashes	Fatal Crashes
2011	132	6
2012	120	5
2013	179	10
2014	204	9
2015	133	2
2016	106	9
2017	119	5
2018	78	0
2019	156	9
2020	99	2



There were 99 snowmobiles in crashes on roadways in 2020, down 25.0 percent from 2011. There were two snowmobiles in fatal crashes, down 66.7 percent from 2011.

ORV/ATVS ON MICHIGAN ROADWAYS		
Year	All Crashes	Fatal Crashes
2011	253	8
2012	275	8
2013	282	11
2014	288	6
2015	292	12
2016	304	14
2017	347	23
2018	283	15
2019	289	7
2020	459	16



There were 459 ORV/ATVs in crashes on roadways in 2020, up 81.4 percent from 2011. There were 16 ORV/ATVs in fatal crashes, up 100.0 percent from 2011.