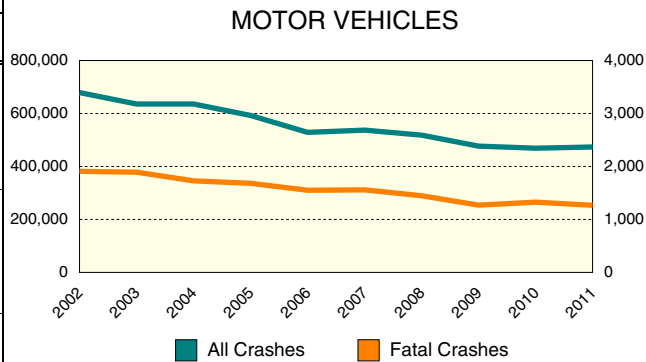


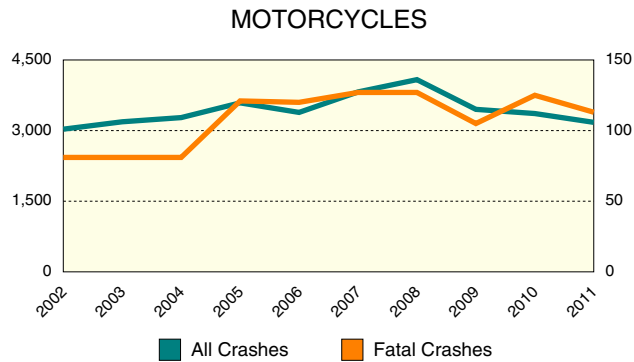
10 YEAR TRENDS

MOTOR VEHICLES		
	All Crashes	Fatal Crashes
2002	678,990	1,908
2003	635,767	1,892
2004	635,913	1,728
2005	592,671	1,682
2006	528,763	1,551
2007	537,228	1,558
2008	518,240	1,447
2009	476,801	1,270
2010	468,968	1,326
2011	473,501	1,267



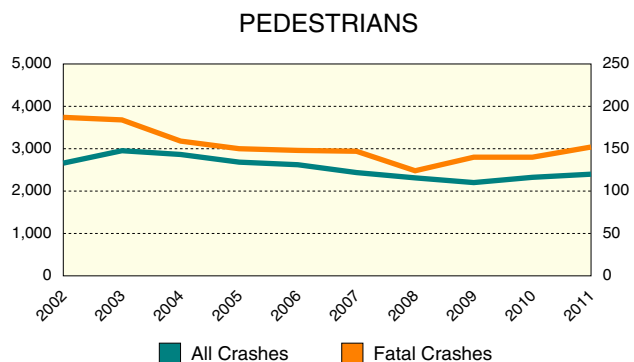
There were 1,267 motor vehicles involved in fatal crashes in 2011, down 33.6 percent from 2002. There has been a 30.3 percent decrease in all crashes.

MOTORCYCLES		
	All Crashes	Fatal Crashes
2002	3,030	81
2003	3,187	81
2004	3,276	81
2005	3,589	121
2006	3,386	120
2007	3,821	127
2008	4,082	127
2009	3,451	105
2010	3,362	125
2011	3,175	113



The number of motorcycles involved in fatal crashes has increased 39.5 percent in the ten-year period. There has been a 4.8 percent increase in all crashes.

PEDESTRIANS		
	All Crashes	Fatal Crashes
2002	2,660	187
2003	2,953	184
2004	2,864	159
2005	2,683	150
2006	2,622	148
2007	2,437	147
2008	2,312	124
2009	2,201	140
2010	2,325	140
2011	2,399	152



There were 152 pedestrians involved in fatal crashes in 2011, down 18.7 percent from 2002. There has been a 9.8 percent decrease in pedestrians involved in all crashes.