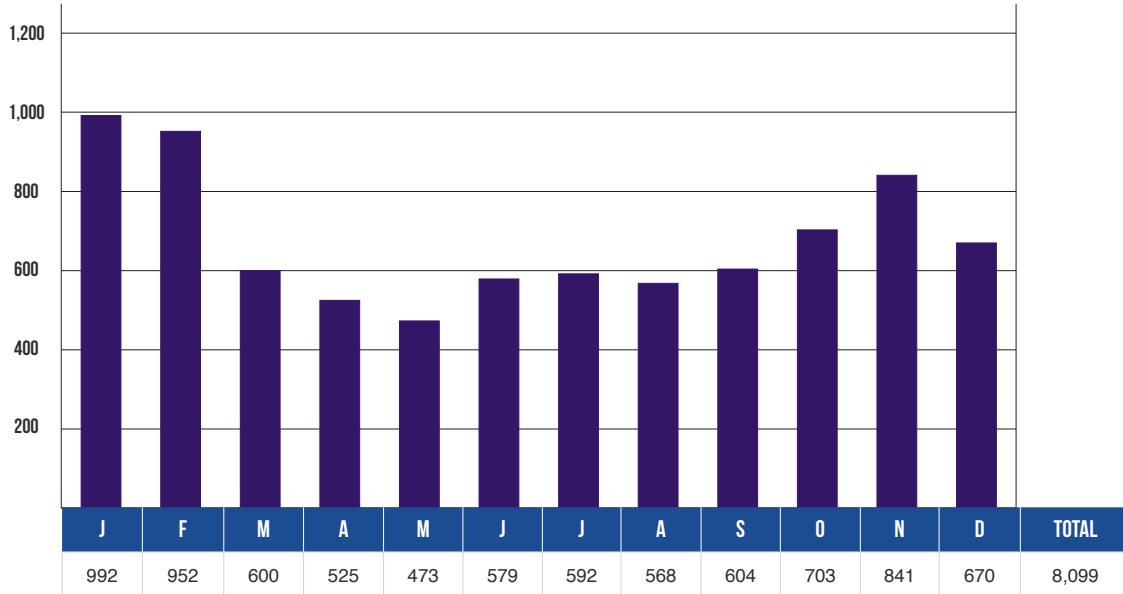
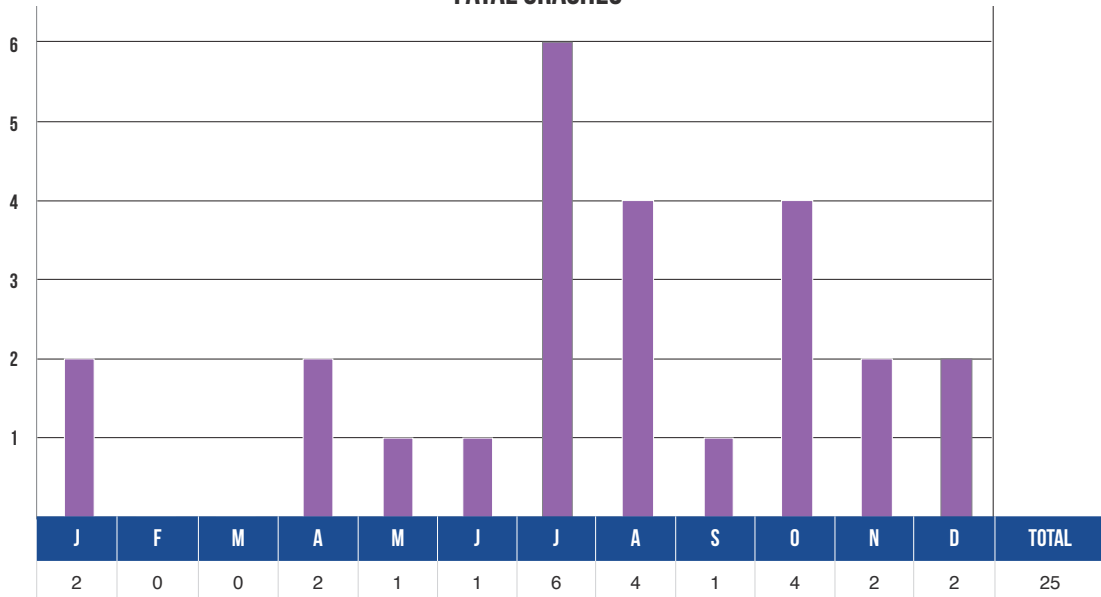


# UPPER PENINSULA ALL CRASHES INJURY SEVERITY BY MONTH

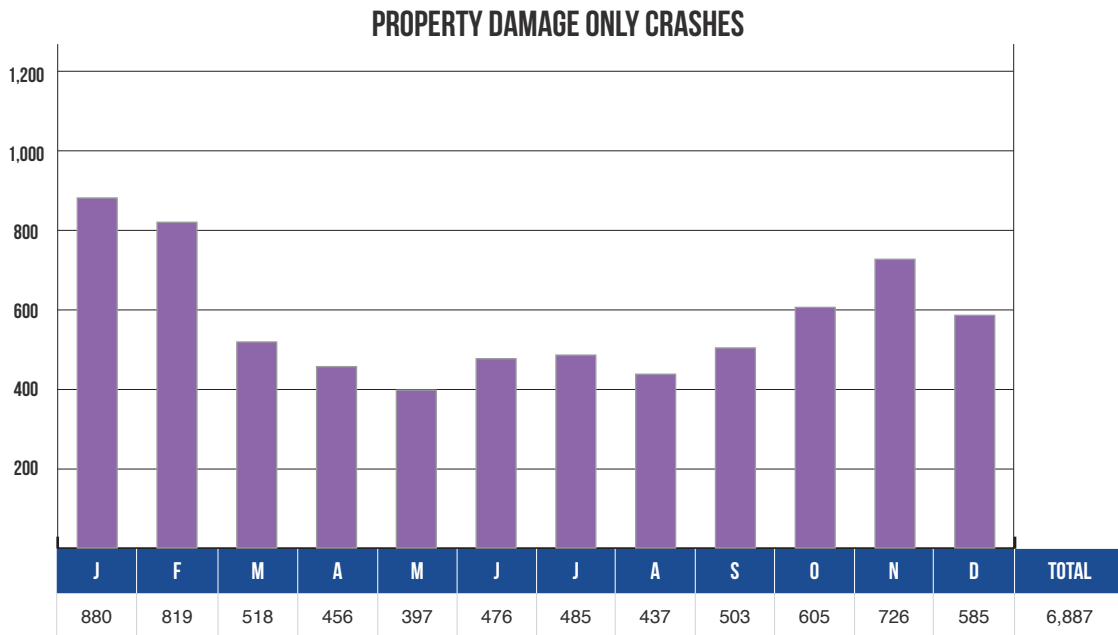
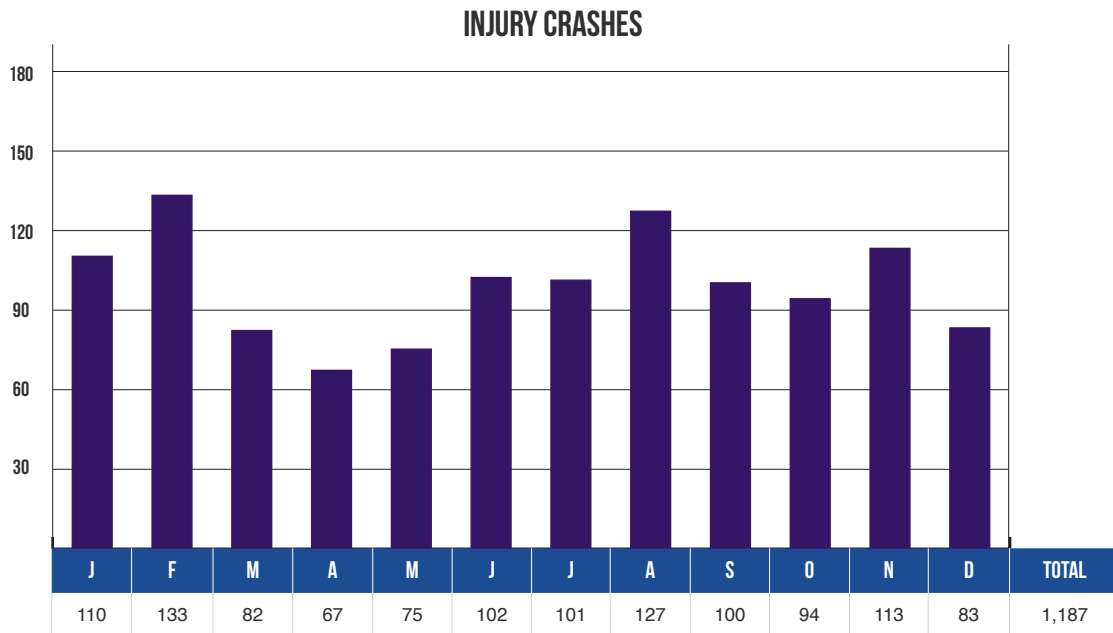
## TOTAL CRASHES



## FATAL CRASHES



## UPPER PENINSULA ALL CRASHES INJURY SEVERITY BY MONTH (CONTINUED)



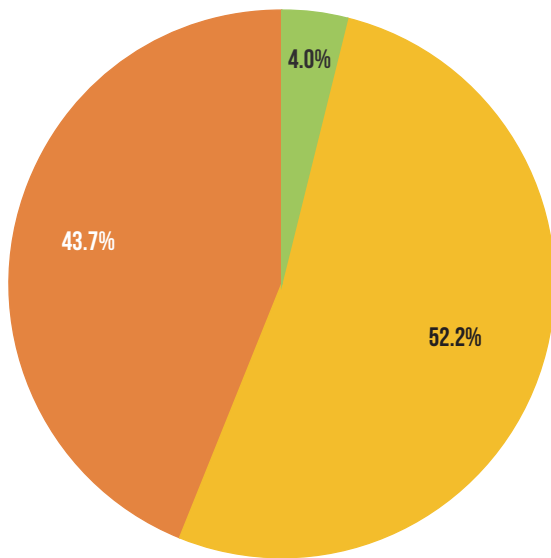
## UPPER PENINSULA CRASH EXPERIENCE BY HIGHWAY CLASS

HIGHWAY CLASS	ALL CRASHES	FATAL CRASHES	INJURY CRASHES	PROPERTY DAMAGE ONLY
Interstate Routes	328	1	46	281
U.S. & Michigan Roads	4,229	13	600	3,616
County & City Roads	3,542	11	541	2,990
<b>TOTAL</b>	<b>8,099</b>	<b>25</b>	<b>1,187</b>	<b>6,887</b>

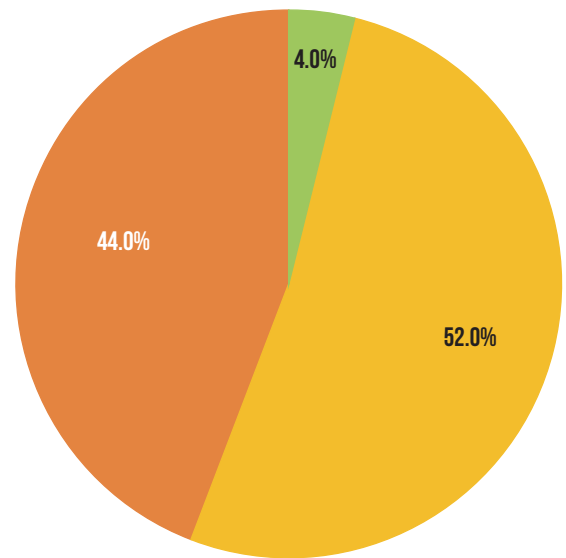
INTERSTATE ROUTES

U.S. & MICHIGAN ROADS

COUNTY & CITY ROADS



ALL CRASHES



FATAL CRASHES

The majority of all crashes (52.2%), fatal crashes (52.0%), injury crashes (50.5%), and property damage only crashes (52.5%) occur on U.S. and Michigan roads.

## UPPER PENINSULA CRASH EXPERIENCE BY CRASH TYPE

CRASH TYPE	ALL CRASHES		FATAL CRASHES		INJURY CRASHES			PROPERTY DAMAGE ONLY
	Number	% of Total	Number	% of Total	A	B	C	
Single Vehicle	4,622	57.1	15	60.0	97	155	280	4,075
Head On	90	1.1	4	16.0	10	8	20	48
Head On – Left Turn	107	1.3	1	4.0	9	10	22	65
Angle	1,124	13.9	3	12.0	17	63	165	876
Rear End	963	11.9	2	8.0	12	27	155	767
Rear End – Left Turn	77	1.0	0	0.0	4	1	17	55
Rear End – Right Turn	66	0.8	0	0.0	1	0	4	61
Sideswipe – Same Direction	406	5.0	0	0.0	2	2	24	378
Sideswipe – Opposite Direction	162	2.0	0	0.0	2	6	16	138
Other/Unknown	482	6.0	0	0.0	12	14	32	424
<b>TOTAL</b>	<b>8,099</b>	<b>100.0</b>	<b>25</b>	<b>100.0</b>	<b>166</b>	<b>286</b>	<b>735</b>	<b>6,887</b>

In the Upper Peninsula, the single vehicle crash type produces the highest percentage of all crashes (57.1%), fatal crashes (60.0%), injury crashes (44.8%), and property damage only crashes (59.2%). Single vehicle crashes include rollovers, which are a particularly deadly crash type.

## RELATIONSHIP TO ROADWAY

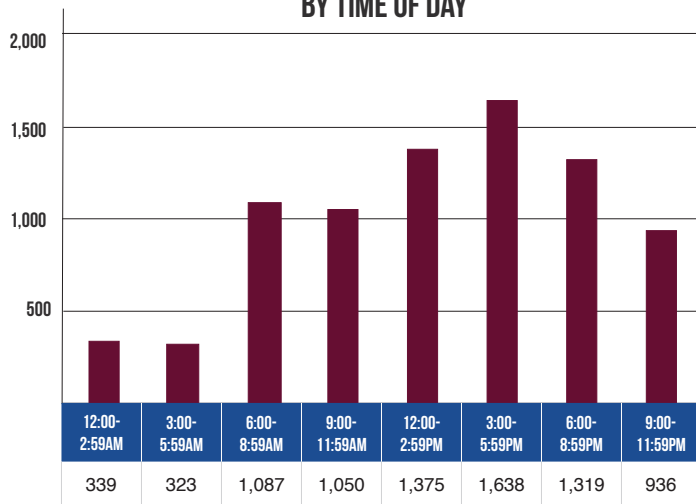
LOCATION OF FIRST IMPACT	ALL CRASHES		FATAL CRASHES		INJURY CRASHES			PROPERTY DAMAGE ONLY
	Number	% of Total	Number	% of Total	A	B	C	
On Road	6,410	79.1	14	56.0	86	173	526	5,611
Median	26	0.3	0	0.0	2	1	1	22
Shoulder	639	7.9	2	8.0	26	25	63	523
Outside of Shoulder/Curb	852	10.5	7	28.0	41	73	122	609
Gore	28	0.3	2	8.0	2	3	4	17
Other/Unknown	144	1.8	0	0.0	9	11	19	105
<b>TOTAL</b>	<b>8,099</b>	<b>100.0</b>	<b>25</b>	<b>100.0</b>	<b>166</b>	<b>286</b>	<b>735</b>	<b>6,887</b>

Only 10.5 percent of crashes occur outside of the shoulder/curb of the road, but these crashes account for 28.0 percent of the fatal crashes.

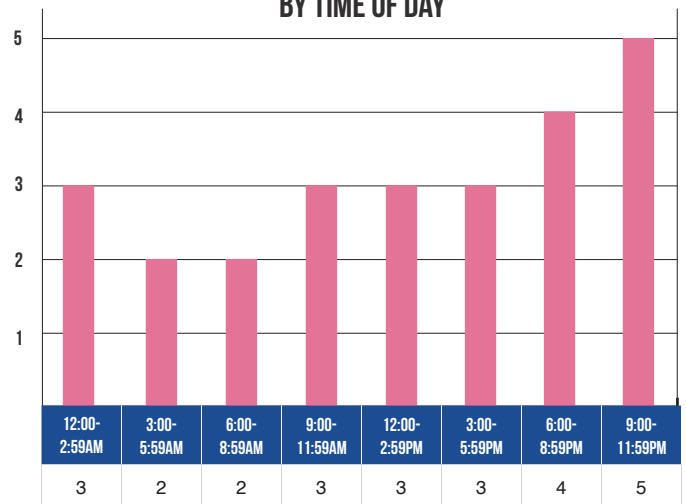
## UPPER PENINSULA TIME AND SEVERITY

TIME OF DAY	ALL CRASHES		FATAL CRASHES		INJURY CRASHES			PROPERTY DAMAGE ONLY
	Number	% of Total	Number	% of Total	A	B	C	
12:00 AM–2:59 AM	339	4.2	3	12.0	9	20	21	286
3:00 AM–5:59 AM	323	4.0	2	8.0	7	15	25	274
6:00 AM–8:59 AM	1,087	13.4	2	8.0	13	36	74	962
9:00 AM–11:59 AM	1,050	13.0	3	12.0	20	43	123	861
12:00 PM–2:59 PM	1,375	17.0	3	12.0	33	55	169	1,115
3:00 PM–5:59 PM	1,638	20.2	3	12.0	42	59	182	1,352
6:00 PM–8:59 PM	1,319	16.3	4	16.0	28	35	98	1,154
9:00 PM–11:59 PM	936	11.6	5	20.0	14	23	41	853
Unknown	32	0.4	0	0.0	0	0	2	30
<b>TOTAL</b>	<b>8,099</b>	<b>100.0</b>	<b>25</b>	<b>100.0</b>	<b>166</b>	<b>286</b>	<b>735</b>	<b>6,887</b>

**ALL CRASHES  
BY TIME OF DAY**



**FATAL CRASHES  
BY TIME OF DAY**

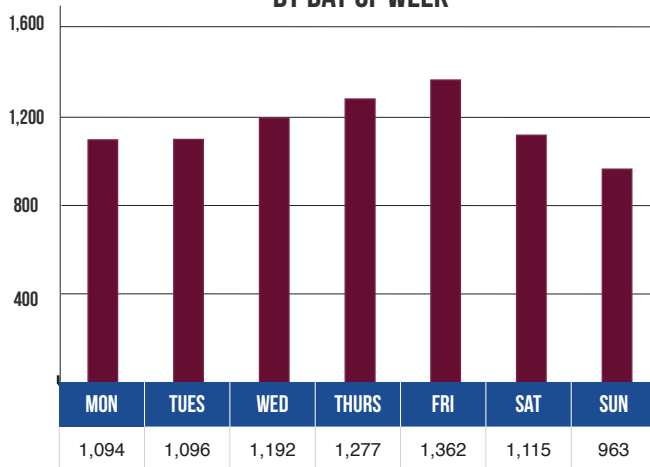


In the Upper Peninsula, crash frequencies peak in the early evening, then drop off until 6:00 AM (the morning rush hour).

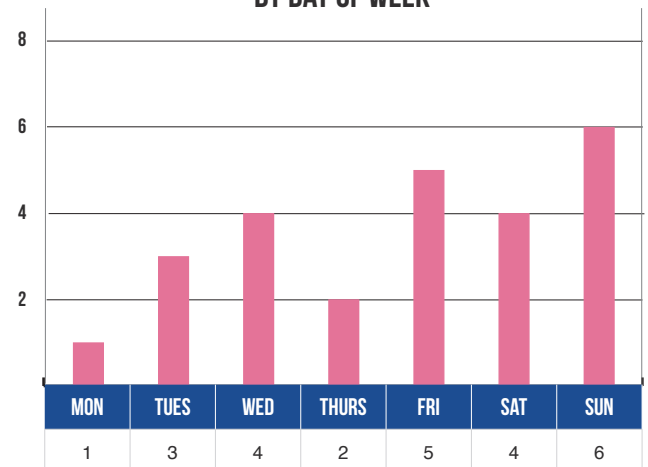
## UPPER PENINSULA DAY OF WEEK

DAY OF WEEK	ALL CRASHES		FATAL CRASHES		INJURY CRASHES			PROPERTY DAMAGE ONLY
	Number	% of Total	Number	% of Total	A	B	C	
Monday	1,094	13.5	1	4.0	20	44	101	928
Tuesday	1,096	13.5	3	12.0	27	30	96	940
Wednesday	1,192	14.7	4	16.0	21	35	103	1,029
Thursday	1,277	15.8	2	8.0	18	40	117	1,100
Friday	1,362	16.8	5	20.0	34	42	115	1,166
Saturday	1,115	13.8	4	16.0	26	52	103	930
Sunday	963	11.9	6	24.0	20	43	100	794
<b>TOTAL</b>	<b>8,099</b>	<b>100.0</b>	<b>25</b>	<b>100.0</b>	<b>166</b>	<b>286</b>	<b>735</b>	<b>6,887</b>

**ALL CRASHES  
BY DAY OF WEEK**



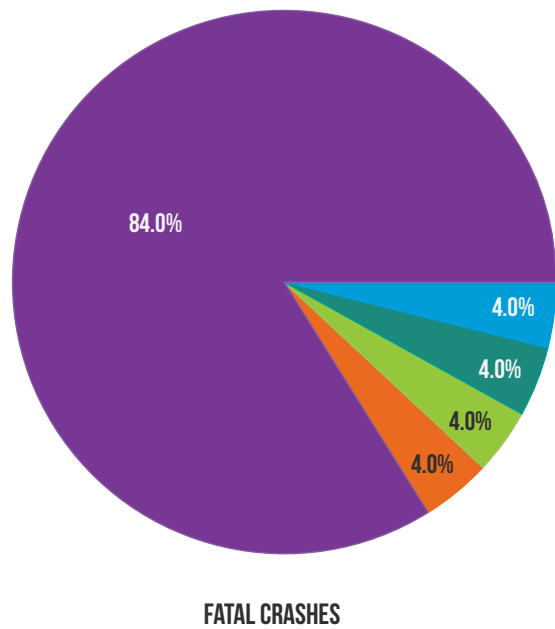
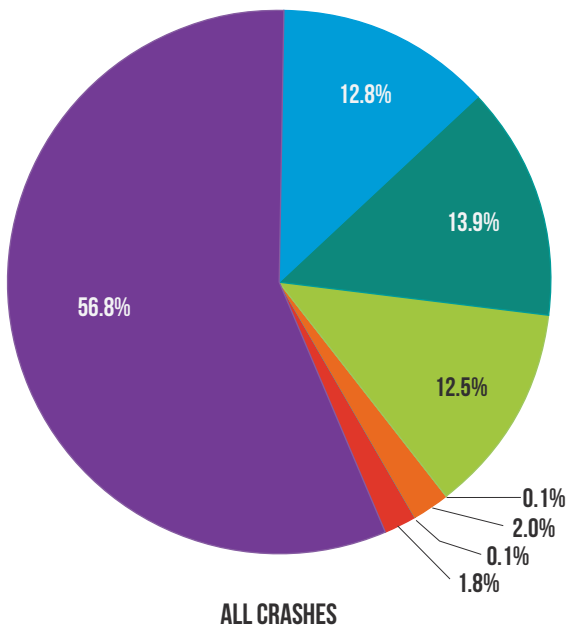
**FATAL CRASHES  
BY DAY OF WEEK**



In the Upper Peninsula, crash frequencies are the highest on Friday (1,362). Sunday has the highest number of fatal crashes (6).

# UPPER PENINSULA ROAD CONDITION

ROAD SURFACE CONDITION	ALL CRASHES		FATAL CRASHES		INJURY CRASHES			PROPERTY DAMAGE ONLY
	Number	% of Total	Number	% of Total	A	B	C	
Dry	4,601	56.8	21	84.0	109	176	380	3,915
Wet	1,034	12.8	1	4.0	23	39	107	864
Icy	1,128	13.9	1	4.0	14	31	129	953
Snowy	1,009	12.5	1	4.0	14	27	96	871
Muddy	11	0.1	0	0.0	1	1	1	8
Slushy	161	2.0	1	4.0	2	6	16	136
Debris	7	0.1	0	0.0	1	0	1	5
Other/Unknown	148	1.8	0	0.0	2	6	5	135
<b>TOTAL</b>	<b>8,099</b>	<b>100.0</b>	<b>25</b>	<b>100.0</b>	<b>166</b>	<b>286</b>	<b>735</b>	<b>6,887</b>

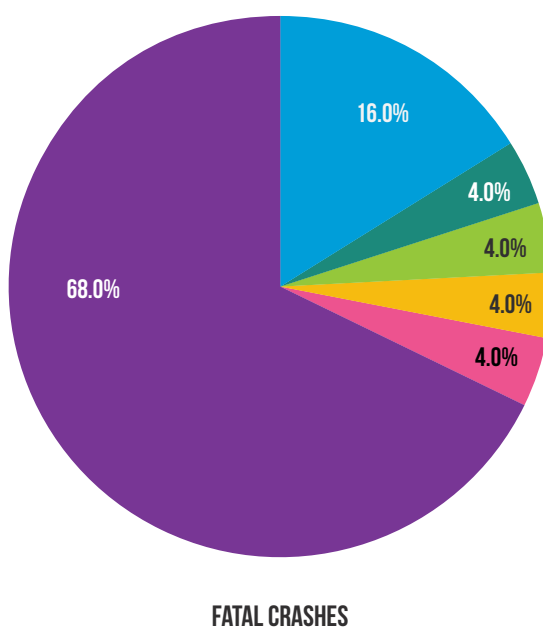
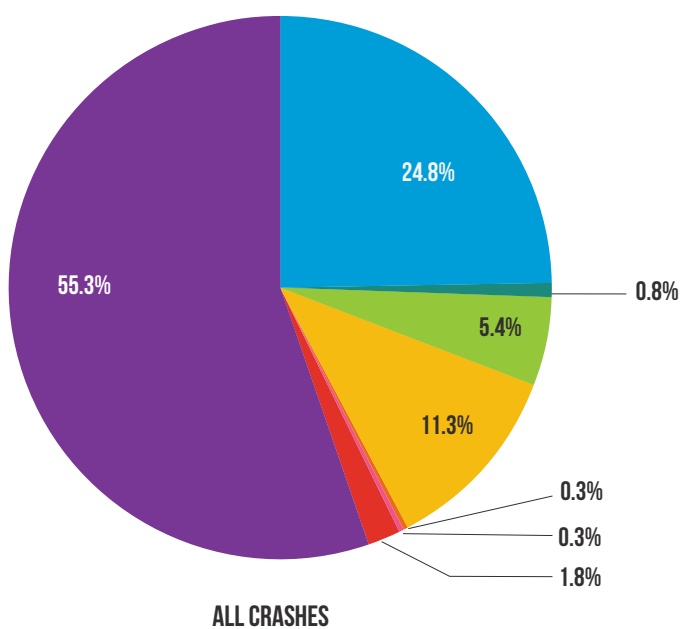


In the Upper Peninsula, the majority of all crashes (56.8%), fatal crashes (84.0%), injury crashes (56.0%), and property damage only crashes (56.8%) occur on dry roads.

## UPPER PENINSULA WEATHER CONDITION

WEATHER CONDITION	ALL CRASHES		FATAL CRASHES		INJURY CRASHES			PROPERTY DAMAGE ONLY
	Number	% of Total	Number	% of Total	A	B	C	
Clear	4,477	55.3	17	68.0	103	174	370	3,813
Cloudy	2,010	24.8	4	16.0	38	67	188	1,713
Fog/Smoke	67	0.8	1	4.0	0	1	3	62
Rain	437	5.4	1	4.0	8	20	52	356
Snow/Blowing Snow	914	11.3	1	4.0	16	21	116	760
Severe Wind	25	0.3	0	0.0	0	0	3	22
Sleet/Hail	22	0.3	1	4.0	0	0	1	20
Other/Unknown	147	1.8	0	0.0	1	3	2	141
<b>TOTAL</b>	<b>8,099</b>	<b>100.0</b>	<b>25</b>	<b>100.0</b>	<b>166</b>	<b>286</b>	<b>735</b>	<b>6,887</b>

■ CLEAR   
 ■ CLOUDY   
 ■ FOG/SMOKE   
 ■ RAIN   
 ■ SNOW/ BLOWING SNOW   
 ■ SEVERE WIND   
 ■ SLEET/HAIL   
 ■ OTHER/UNKNOWN



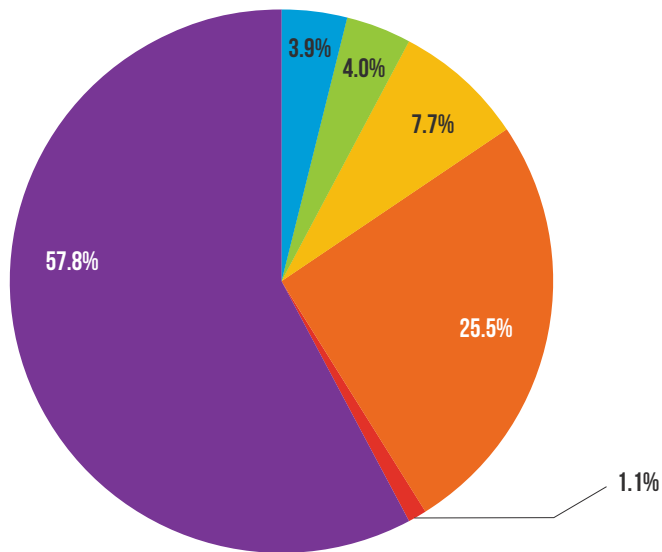
In the Upper Peninsula, the majority of all crashes (55.3%), fatal crashes (68.0%), injury crashes (54.5%), and property damage only crashes (55.4%) occur during clear weather conditions.



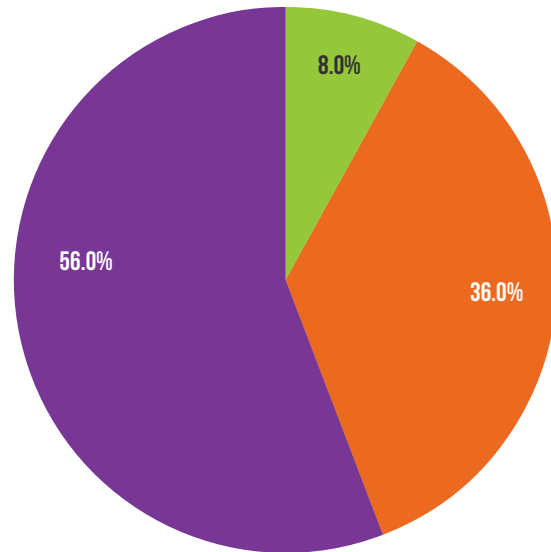
## UPPER PENINSULA LIGHT CONDITION

LIGHT CONDITION	ALL CRASHES		FATAL CRASHES		INJURY CRASHES			PROPERTY DAMAGE ONLY
	Number	% of Total	Number	% of Total	A	B	C	
Daylight	4,681	57.8	14	56.0	108	195	535	3,829
Dawn	318	3.9	0	0.0	2	12	14	290
Dusk	321	4.0	2	8.0	7	5	15	292
Dark – Lighted	625	7.7	0	0.0	4	26	70	525
Dark – Unlighted	2,063	25.5	9	36.0	45	47	99	1,863
Other/Unknown	91	1.1	0	0.0	0	1	2	88
<b>TOTAL</b>	<b>8,099</b>	<b>100.0</b>	<b>25</b>	<b>100.0</b>	<b>166</b>	<b>286</b>	<b>735</b>	<b>6,887</b>

■ DAYLIGHT     
 ■ DAWN     
 ■ DUSK     
 ■ DARK-LIGHTED     
 ■ DARK-UNLIGHTED     
 ■ OTHER/UNKNOWN



ALL CRASHES



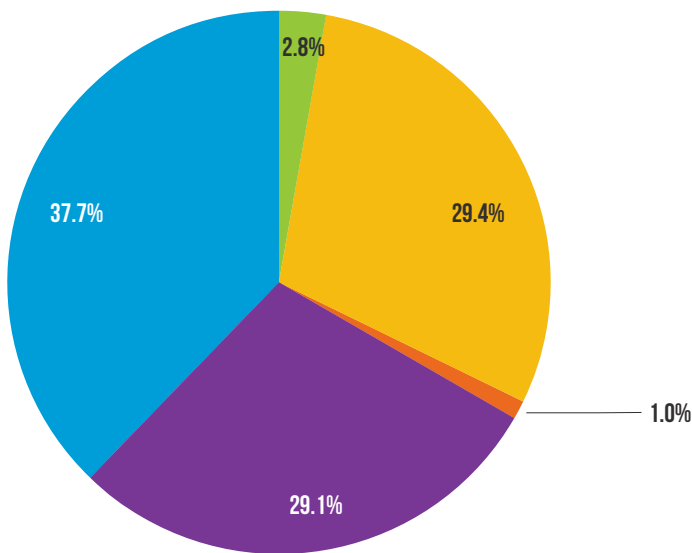
FATAL CRASHES

In the Upper Peninsula, the majority of all crashes (57.8%), fatal crashes (56.0%), injury crashes (70.6%), and property damage only crashes (55.6%) occur during daylight hours.

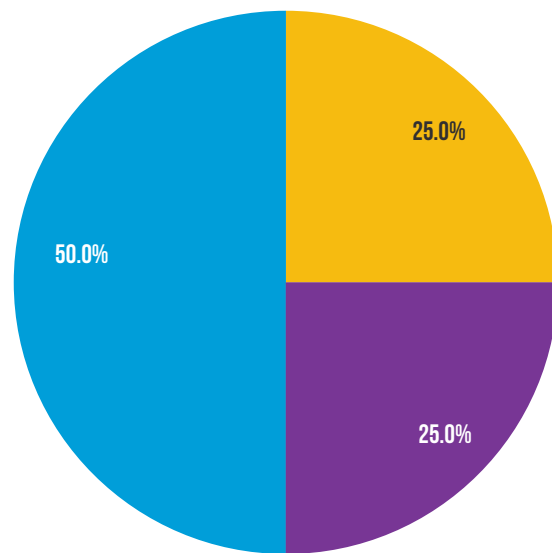
## UPPER PENINSULA INTERSECTION CRASHES BY TRAFFIC CONTROL TYPE

TRAFFIC CONTROL TYPE	ALL CRASHES		FATAL CRASHES		INJURY CRASHES			PROPERTY DAMAGE ONLY
	Number	% of Total	Number	% of Total	A	B	C	
Signal	556	29.1	1	25.0	7	30	102	416
Stop Sign	720	37.7	2	50.0	9	39	101	569
Yield Sign	53	2.8	0	0.0	0	3	7	43
None of These	560	29.4	1	25.0	14	21	72	452
Unknown	19	1.0	0	0.0	2	1	2	14
<b>TOTAL</b>	<b>1,908</b>	<b>100.0</b>	<b>4</b>	<b>100.0</b>	<b>32</b>	<b>94</b>	<b>284</b>	<b>1,494</b>

■ SIGNAL     
 ■ STOP SIGN     
 ■ YIELD SIGN     
 ■ NONE OF THESE     
 ■ UNKNOWN



ALL CRASHES



FATAL CRASHES

Compared to other intersection crashes, Upper Peninsula intersections with stop signs have the highest percentage of all crashes (37.7%), fatal crashes (50.0%), injury crashes (36.3%), and property damage only crashes (38.1%).

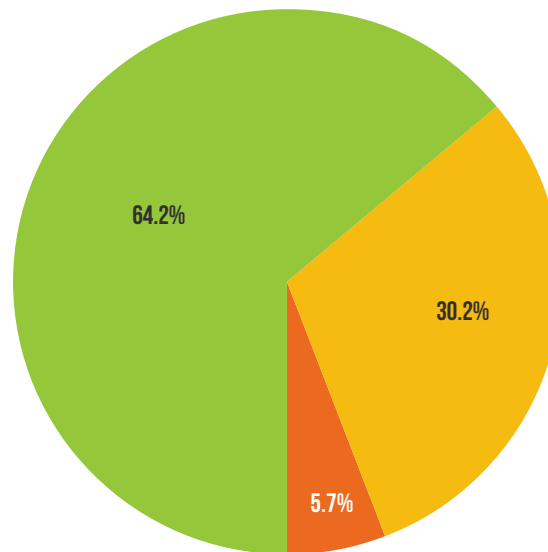
## UPPER PENINSULA CONSTRUCTION ZONE CRASHES

CONSTRUCTION ZONE TYPE	ALL CRASHES		FATAL CRASHES		INJURY CRASHES			PROPERTY DAMAGE ONLY
	Number	% of Total	Number	% of Total	A	B	C	
<b>CONSTRUCTION/MAINTENANCE</b>	<i>Indicates roadway construction, maintenance, or repair. The building, maintenance, or repair of the road itself and roadway-related features (e.g., overhead signs, signals).</i>							
Lane Closed	34	64.2	0	0.0	1	0	7	26
Lane Open	16	30.2	0	0.0	0	0	0	16
Unknown Lane Closure	3	5.7	0	0.0	0	0	0	3
<b>TOTAL</b>	<b>53</b>	<b>100.0</b>	<b>0</b>	<b>0.0</b>	<b>1</b>	<b>0</b>	<b>7</b>	<b>45</b>

■ LANE CLOSED

■ LANE OPEN

■ UNKNOWN LANE CLOSURE



ALL CRASHES

The majority of all crashes (64.2%), injury crashes (100.0%), and property damage only crashes (57.8%) occur in closed lanes in construction/maintenance zones.

## UPPER PENINSULA CONSTRUCTION ZONE CRASHES

CONSTRUCTION ZONE TYPE	ALL CRASHES		FATAL CRASHES		INJURY CRASHES			PROPERTY DAMAGE ONLY
	Number	% of Total	Number	% of Total	A	B	C	
<b>UTILITY</b>	<i>Indicates work on facilities other than the roadway such as telephone, electrical, cable television, water, or sewer.</i>							
Lane Closed	0	0.0	0	0.0	0	0	0	0
Lane Open	2	100.0	0	0.0	0	0	0	2
Unknown Lane Closure	0	0.0	0	0.0	0	0	0	0
<b>TOTAL</b>	<b>2</b>	<b>100.0</b>	<b>0</b>	<b>0.0</b>	<b>0</b>	<b>0</b>	<b>0</b>	<b>2</b>