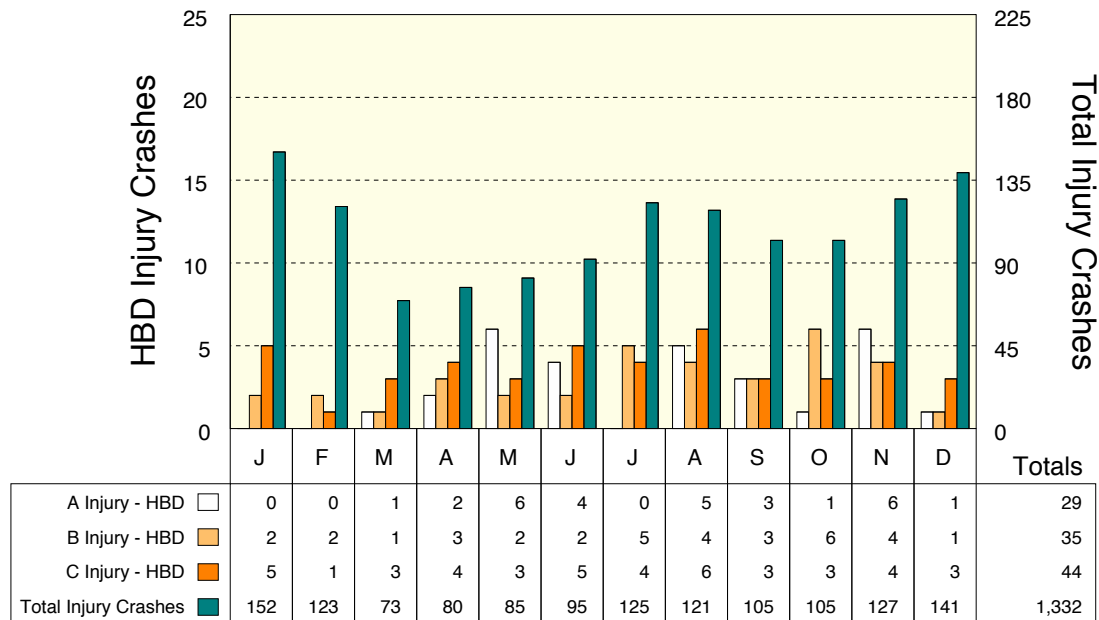


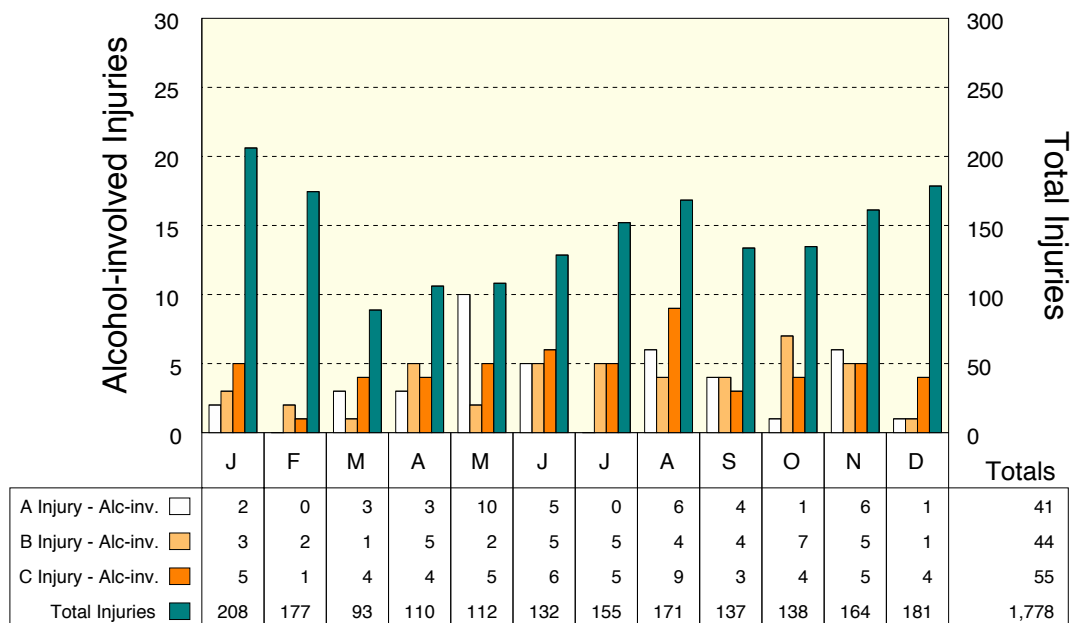
## UPPER PENINSULA ALCOHOL INVOLVEMENT IN INJURY CRASHES

### HBD Injury Crashes by Month



Alcohol involvement in injury crashes is an important indicator of the alcohol impaired driving problem. In 2013, the highest number of HBD injury crashes occurred in August (15). The highest proportion of HBD injury crashes occurred in May (12.9%).

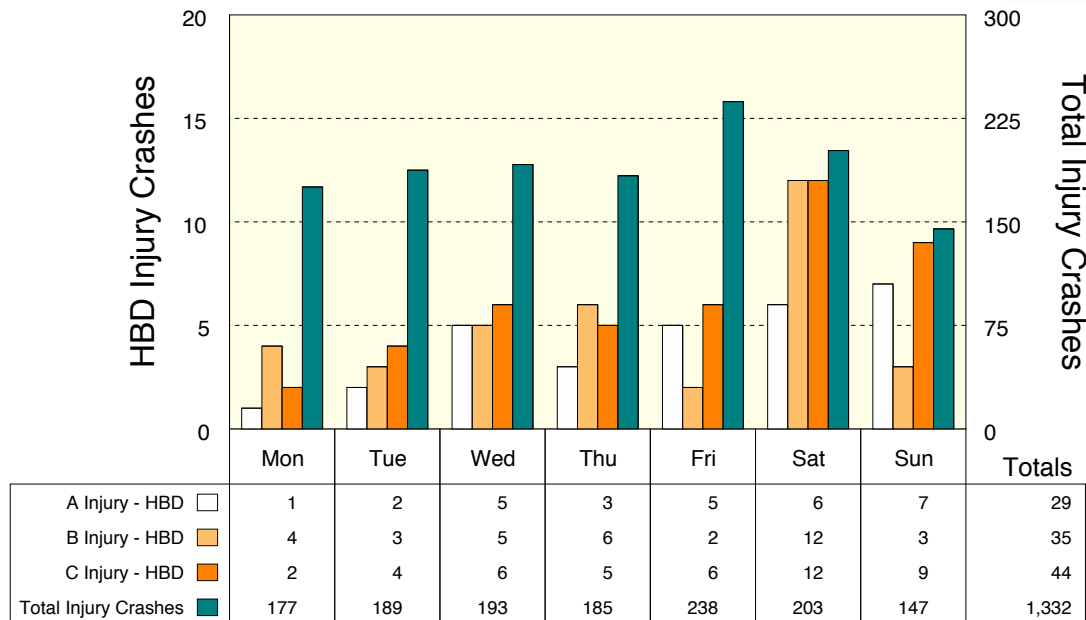
### Alcohol-involved Injuries by Month



Note: An alcohol-involved injury is any person injured in an HBD crash.

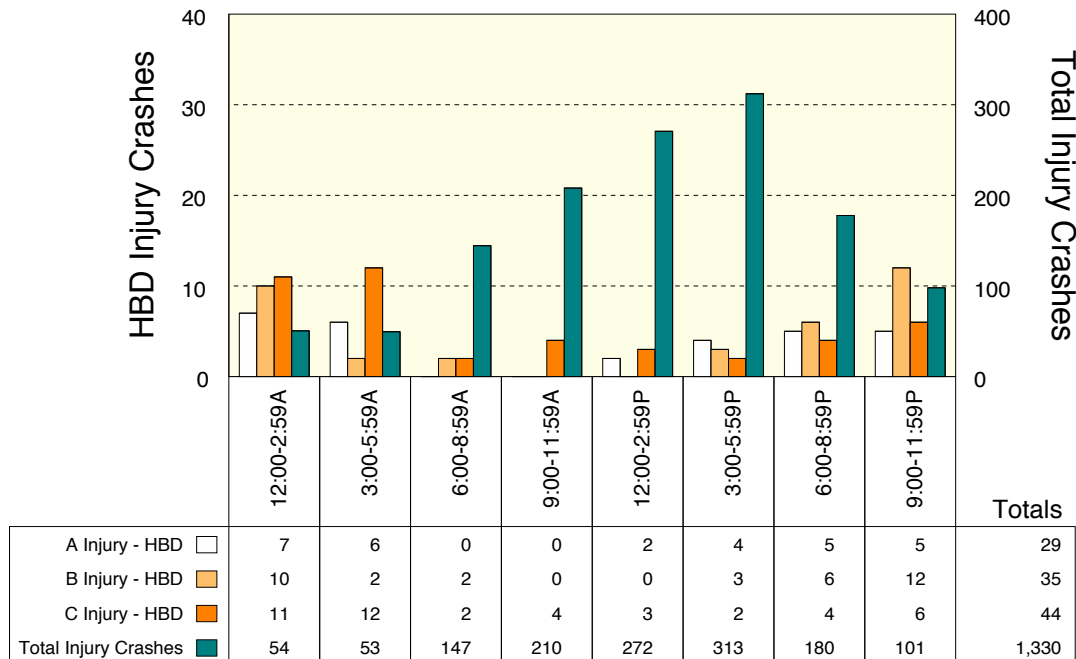


## HBD Injury Crashes by Day of Week



The peak day for all injury crashes is Friday. The highest proportion of HBD injury crashes to total injury crashes occurred on Saturday (14.8%).

## HBD Injury Crashes by Time of Day



Total injury crash frequencies peak in the hours between 3:00 PM and 5:59 PM, while HBD injury crash frequencies peak between midnight and 2:59 AM (a particularly hazardous travel period). There were four HBD injury crashes where the time of day was unknown and they do not appear in this table.