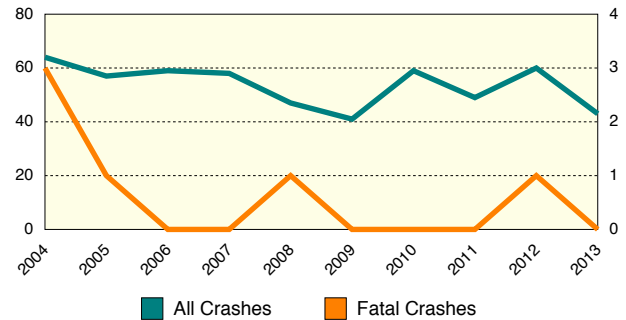




## 10 YEAR TRENDS (continued)

UPPER PENINSULA BICYCLES		
	All Crashes	Fatal Crashes
2004	64	3
2005	57	1
2006	59	0
2007	58	0
2008	47	1
2009	41	0
2010	59	0
2011	49	0
2012	60	1
2013	43	0

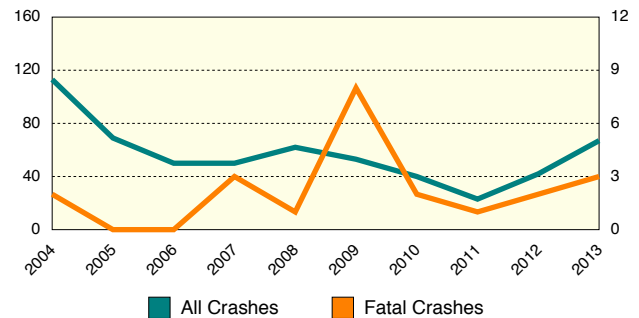
**UPPER PENINSULA BICYCLES**



There were 43 bicycles involved in Upper Peninsula crashes in 2013, down 32.8 percent from 2004. There were 0 bicycles involved in fatal crashes in 2013, compared to 3 bicycles involved in fatal crashes in 2004.

UPPER PENINSULA SNOWMOBILES ON MICHIGAN ROADWAYS		
	All Crashes	Fatal Crashes
2004	113	2
2005	69	0
2006	50	0
2007	50	3
2008	62	1
2009	53	8
2010	40	2
2011	23	1
2012	42	2
2013	67	3

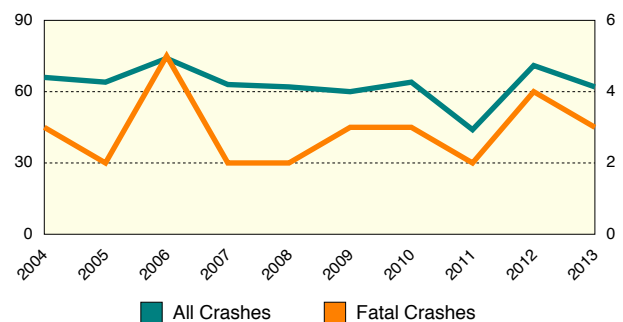
**UPPER PENINSULA SNOWMOBILES ON MICHIGAN ROADWAYS**



There were 67 snowmobile crashes on roadways in the Upper Peninsula in 2013, down 40.7 percent from 2004. There were 3 fatal snowmobile crashes, up 50.0 percent from 2004.

UPPER PENINSULA ORV/ATVs ON MICHIGAN ROADWAYS		
	All Crashes	Fatal Crashes
2004	66	3
2005	64	2
2006	74	5
2007	63	2
2008	62	2
2009	60	3
2010	64	3
2011	44	2
2012	71	4
2013	62	3

**UPPER PENINSULA ORV/ATV's ON MICHIGAN ROADWAYS**



There were 62 ORV/ATV crashes on roadways in the Upper Peninsula in 2013, down 6.1 percent from 2004. There were 3 fatal ORV/ATV crashes in both 2004 and 2013.