



2021

MTCF
Michigan Traffic
Crash Facts

Michigan Traffic Crash Facts

Reporting Criteria

Please pay particular attention to the wording when interpreting the three levels of data gathered for this report.

Crash

The Crash Level analyzes data related to crash events and returns one result per crash.

Examples: Time, weather, and location.

Units

The Units Level analyzes the experience of the units in the crash and returns one result per vehicle, driver, pedestrian, bicyclist, or train.

Examples: Vehicle type, driver condition, and unit events.

People

The People Level analyzes the experience of the people involved in the crash and returns one result per occupant/person/party.

Examples: Age, injury severity, and seat belt or helmet use.

KABCO Injury Indicator:

K = Killed

A = Suspected Serious Injury

B = Suspected Minor Injury

C = Possible Injury

O = No Injury

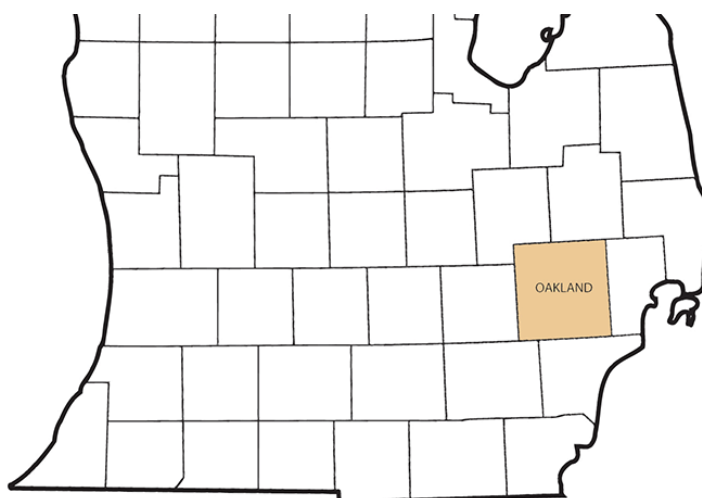
Property Damage Only (PDO)



Traffic Safety Network Oakland County/TIA Early Birds

2021 Traffic Crash Data & 2017-2021 5-Year Trends

Traffic Safety Network Oakland County/TIA Early Birds is comprised of Oakland county. Trend tables for this report are based on those counties.



Sources:

The crashes in this report occurred on public roadways in Michigan and resulted in injuries, fatalities, or property damage (with \$1,000 as a reporting threshold). The information was gathered from Michigan Traffic Crash Report Forms (UD-10) submitted by local police departments, sheriff's offices, and the Michigan State Police. Other related information was obtained from the departments of Transportation, State, and Community Health.

TSN Oakland County/TIA Early Birds

2021 - Crashes and Injury by Month

Month	Crashes				People	
	Total	Fatal	Injury	Property Damage Only (PDO)	Fatalities	Injuries
January	2,312	4	433	1,875	4	586
February	2,284	0	419	1,865	0	544
March	1,940	8	402	1,530	9	516
April	2,057	4	422	1,631	4	574
May	2,577	4	527	2,046	4	756
June	2,845	6	605	2,234	7	853
July	2,694	6	561	2,127	6	809
August	2,912	6	604	2,302	6	817
September	3,004	4	587	2,413	4	804
October	3,289	5	597	2,687	5	826
November	3,255	9	571	2,675	9	799
December	2,869	8	492	2,369	8	651
Total	32,038	64	6,220	25,754	66	8,535

2021 - Driver Statistics

Age Group	TSN Oakland County/TIA Early Birds			Driver Rates	
	2019 Population*	Licensed Drivers	Drivers in Crashes	Per 10k Population	Per 10k Licensed
0 - 15	227,847	6,723	100	4.4	148.7
16 - 20	73,050	60,340	6,326	866.0	1,048.4
21 - 24	60,226	57,034	5,446	904.3	954.9
25 - 64	678,785	644,798	36,449	537.0	565.3
65 +	217,676	212,362	6,707	308.1	315.8
Unknown	0	0	5,169	--	--
Total	1,257,584	981,257	60,197	478.7	613.5

*2021 Population of Michigan Counties (by single-year of age) not yet available from U.S. Census Bureau.

2021 - Vehicles in Crashes

Vehicle Type	Motor Vehicles		Fatal Crashes		Injury Crashes	PDO Crashes
	Number of Vehicles	% of Total	Number	% of Total	Number	Number
Passenger Car, SUV, Van	51,325	85.3	76	78.4	10,595	40,654
Motor Home	54	0.1	0	0.0	10	44
Pickup Truck	5,560	9.2	8	8.2	1,047	4,505
Small Truck Under 10,000 lbs. GVWR	160	0.3	0	0.0	25	135
Motorcycle	265	0.4	6	6.2	189	70
Moped/Goped	18	0.0	0	0.0	17	1
Go-Cart/Golf Cart	3	0.0	0	0.0	2	1
Snowmobile	0	0.0	0	0.0	0	0
Off-Road Vehicle (ORV)/All-Terrain Vehicle (ATV)	16	0.0	1	1.0	10	5
Other (non-registered farm equipment, construction equipment, snow plows, etc.)	116	0.2	2	2.1	24	90
Truck/Bus (over 10,000 lbs. GVWR/8+ occupants/hazmat placard)	1,838	3.1	4	4.1	296	1,538
Uncoded & Errors	842	1.4	0	0.0	74	768
Total	60,197	100.0	97	100.0	12,289	47,811

TSN Oakland County/TIA Early Birds (continued)

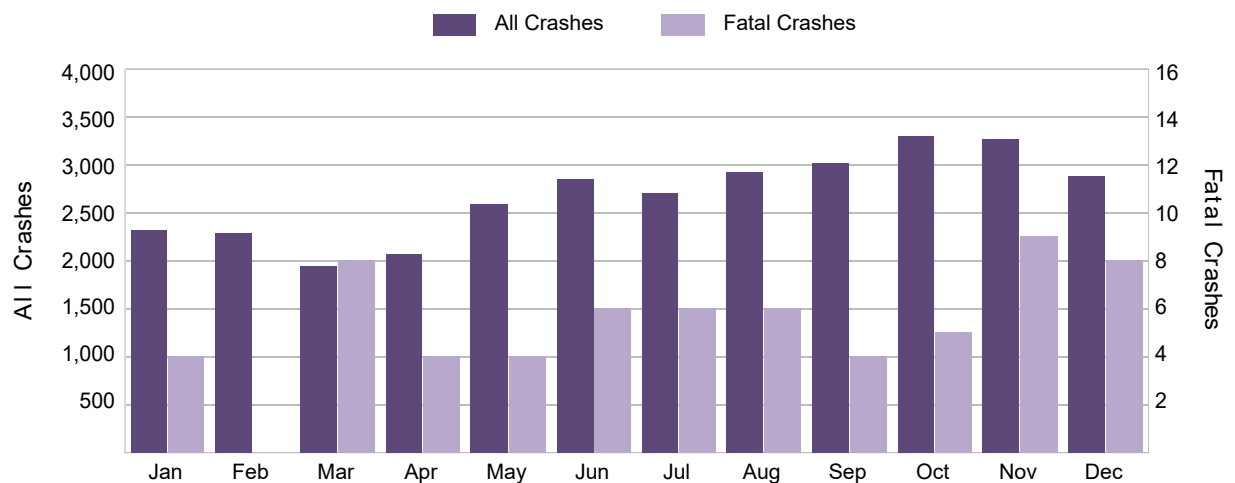
5-Year Trend - Crashes by Month

Month	2017		2018		2019		2020		2021	
	Total Crashes	Fatal Crashes	Total Crashes	Fatal Crashes	Total Crashes	Fatal Crashes	Total Crashes	Fatal Crashes	Total Crashes	Fatal Crashes
January	3,554	5	3,990	2	3,540	2	3,219	6	2,312	4
February	2,640	5	3,257	4	3,114	8	3,332	3	2,284	0
March	3,469	5	3,040	2	2,891	5	1,592	4	1,940	8
April	2,751	2	2,899	4	2,646	5	703	2	2,057	4
May	3,733	3	3,465	3	3,396	2	1,305	4	2,577	4
June	3,524	6	3,457	7	3,413	5	2,157	6	2,845	6
July	3,150	10	3,106	4	3,317	8	2,257	5	2,694	6
August	3,489	5	3,180	9	3,291	7	2,299	5	2,912	6
September	3,281	7	3,140	7	3,374	6	2,246	9	3,004	4
October	3,989	6	3,986	3	4,019	7	2,593	6	3,289	5
November	3,698	7	3,779	5	4,138	4	2,286	1	3,255	9
December	4,505	7	3,515	3	3,255	4	2,327	4	2,869	8
Total	41,783	68	40,814	53	40,394	63	26,316	55	32,038	64

5-Year Trend - Crashes by Day of Week

Day	2017		2018		2019		2020		2021	
	Total Crashes	Fatal Crashes	Total Crashes	Fatal Crashes	Total Crashes	Fatal Crashes	Total Crashes	Fatal Crashes	Total Crashes	Fatal Crashes
Monday	6,453	10	6,195	7	6,466	4	3,652	8	4,414	10
Tuesday	6,975	9	7,054	6	6,394	15	3,800	9	5,153	11
Wednesday	7,027	14	6,305	3	6,920	7	4,602	9	4,989	7
Thursday	6,728	13	6,813	7	6,523	8	4,238	7	4,885	8
Friday	6,849	8	6,784	12	6,437	6	4,280	7	5,354	12
Saturday	4,474	7	4,409	14	4,278	16	3,282	9	4,052	8
Sunday	3,277	7	3,254	4	3,376	7	2,462	6	3,191	8
Total	41,783	68	40,814	53	40,394	63	26,316	55	32,038	64

2021 Crashes by Month

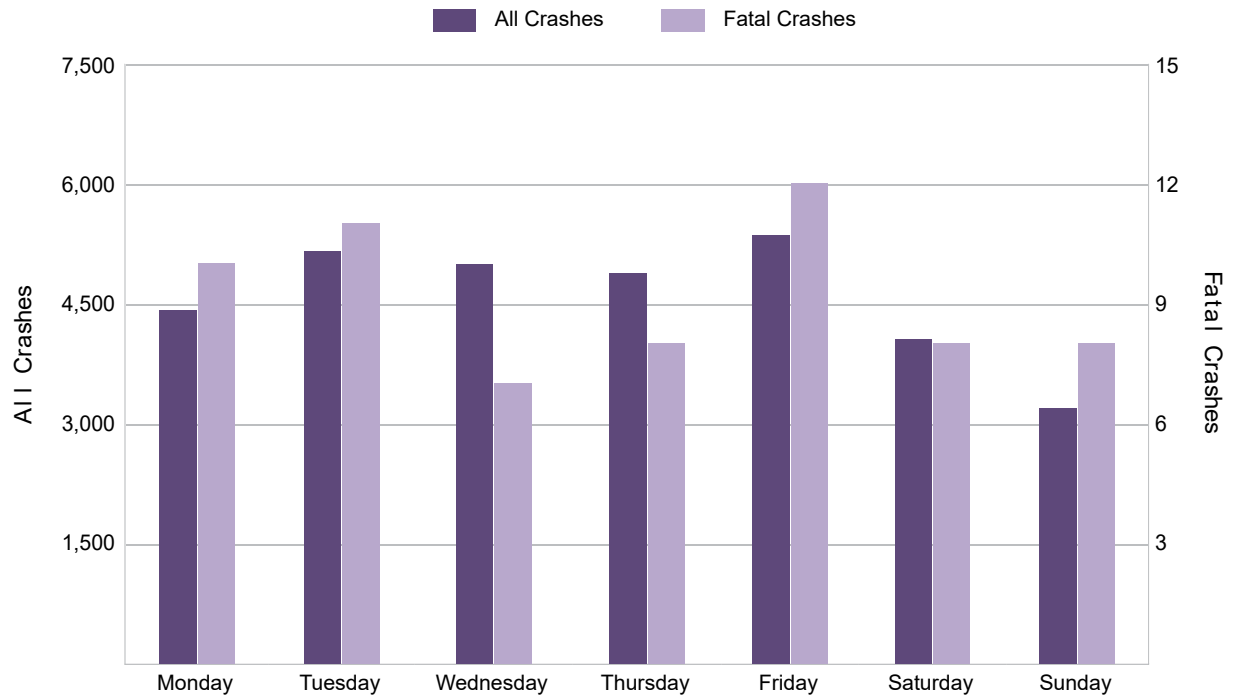


TSN Oakland County/TIA Early Birds (continued)

2021 - Crashes by Day of Week

Day	All Crashes		Fatal Crashes		Injury Crashes			PDO Crashes
	Number	% of Total	Fatal	% of Fatal	A	B	C	Number
Monday	4,414	13.8	10	15.6	42	299	490	3,573
Tuesday	5,153	16.1	11	17.2	45	363	571	4,163
Wednesday	4,989	15.6	7	10.9	48	323	597	4,014
Thursday	4,885	15.2	8	12.5	65	351	496	3,965
Friday	5,354	16.7	12	18.8	59	395	582	4,306
Saturday	4,052	12.6	8	12.5	56	314	451	3,223
Sunday	3,191	10.0	8	12.5	58	247	368	2,510
Total	32,038	100.0	64	100.0	373	2,292	3,555	25,754

2021 Day of Week and Severity

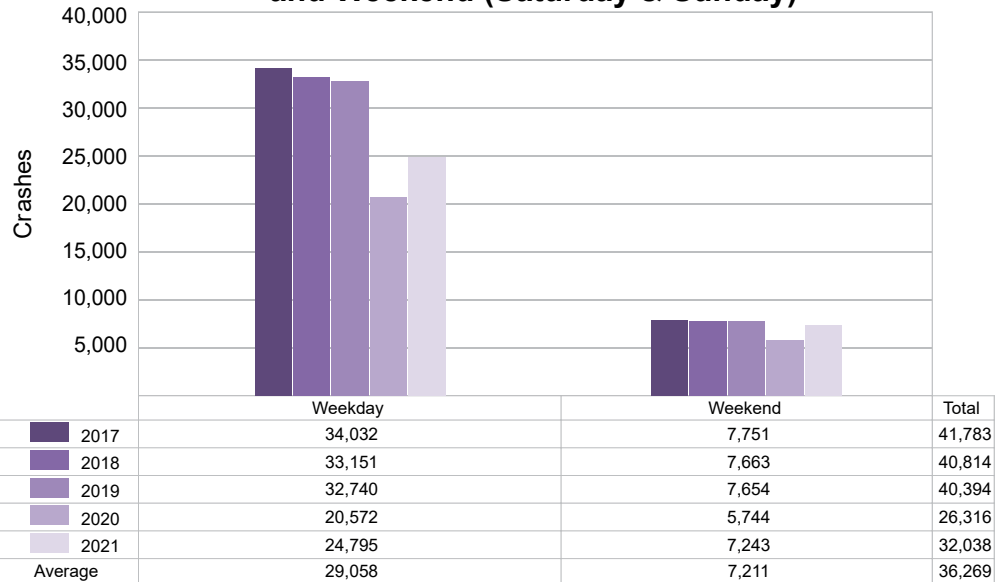


TSN Oakland County/TIA Early Birds (continued)

5-Year Trend - Crashes by Weekday and Weekend

Portion of Week	2017		2018		2019		2020		2021	
	Total Crashes	Fatal Crashes	Total Crashes	Fatal Crashes	Total Crashes	Fatal Crashes	Total Crashes	Fatal Crashes	Total Crashes	Fatal Crashes
Weekday	34,032	54	33,151	35	32,740	40	20,572	40	24,795	48
Weekend	7,751	14	7,663	18	7,654	23	5,744	15	7,243	16
Total	41,783	68	40,814	53	40,394	63	26,316	55	32,038	64

5-Year Crash Trends by Weekday (Monday - Friday)
and Weekend (Saturday & Sunday)



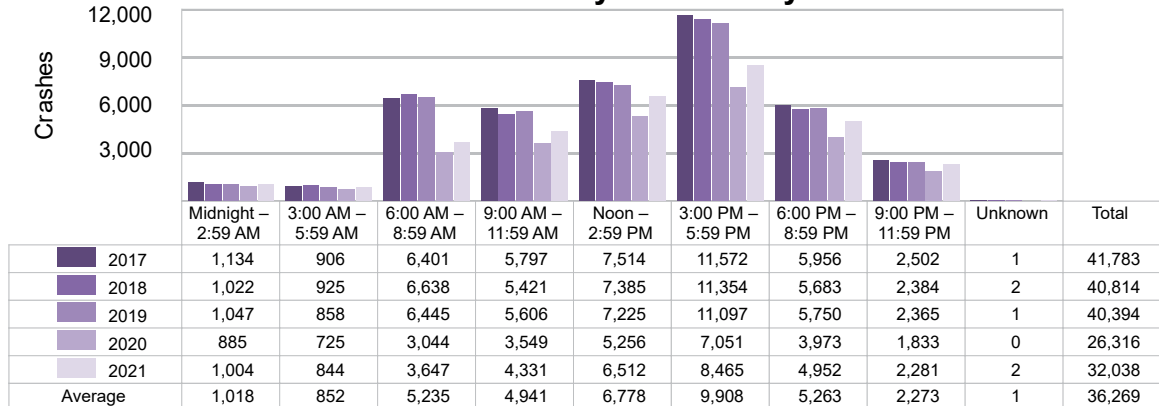
TSN Oakland County/TIA Early Birds (continued)

5-Year Trend - Crashes by Time of Day

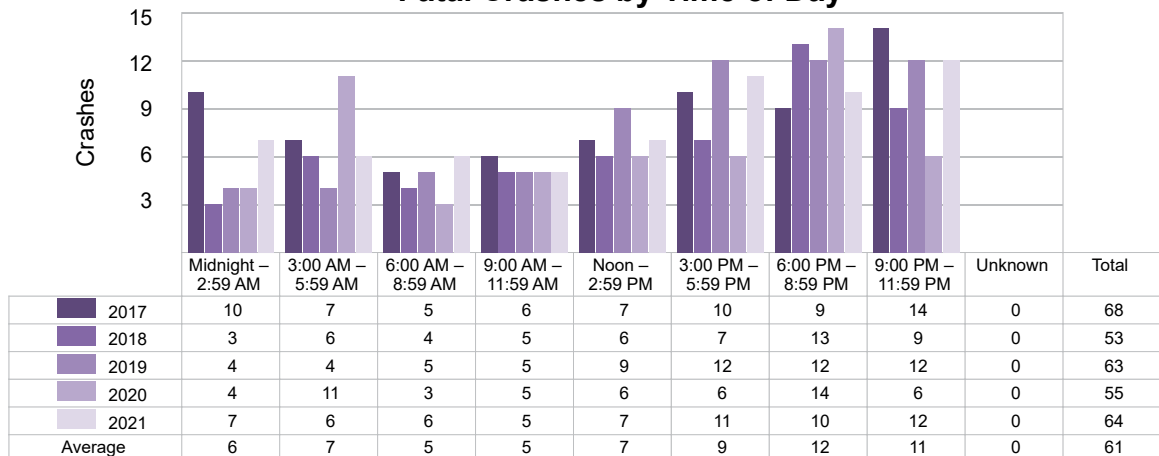
Time of Day	2017		2018		2019		2020		2021	
	Total Crashes	Fatal Crashes	Total Crashes	Fatal Crashes	Total Crashes	Fatal Crashes	Total Crashes	Fatal Crashes	Total Crashes	Fatal Crashes
Midnight – 2:59 AM	1,134	10	1,022	3	1,047	4	885	4	1,004	7
3:00 AM – 5:59 AM	906	7	925	6	858	4	725	11	844	6
6:00 AM – 8:59 AM	6,401	5	6,638	4	6,445	5	3,044	3	3,647	6
9:00 AM – 11:59 AM	5,797	6	5,421	5	5,606	5	3,549	5	4,331	5
Noon – 2:59 PM	7,514	7	7,385	6	7,225	9	5,256	6	6,512	7
3:00 PM – 5:59 PM	11,572 †	10	11,354 †	7	11,097 †	12	7,051 †	6	8,465 †	11
6:00 PM – 8:59 PM	5,956	9	5,683	13	5,750	12	3,973	14	4,952	10
9:00 PM – 11:59 PM	2,502	14	2,384	9	2,365	12	1,833	6	2,281	12
Unknown	1	0	2	0	1	0	0	0	2	0
Total	41,783	68	40,814	53	40,394	63	26,316	55	32,038	64

Note: † Indicates that the highest number of total crashes reported in the 5-year period occurred in the same time period.

5-Year Trend Crashes by Time of Day



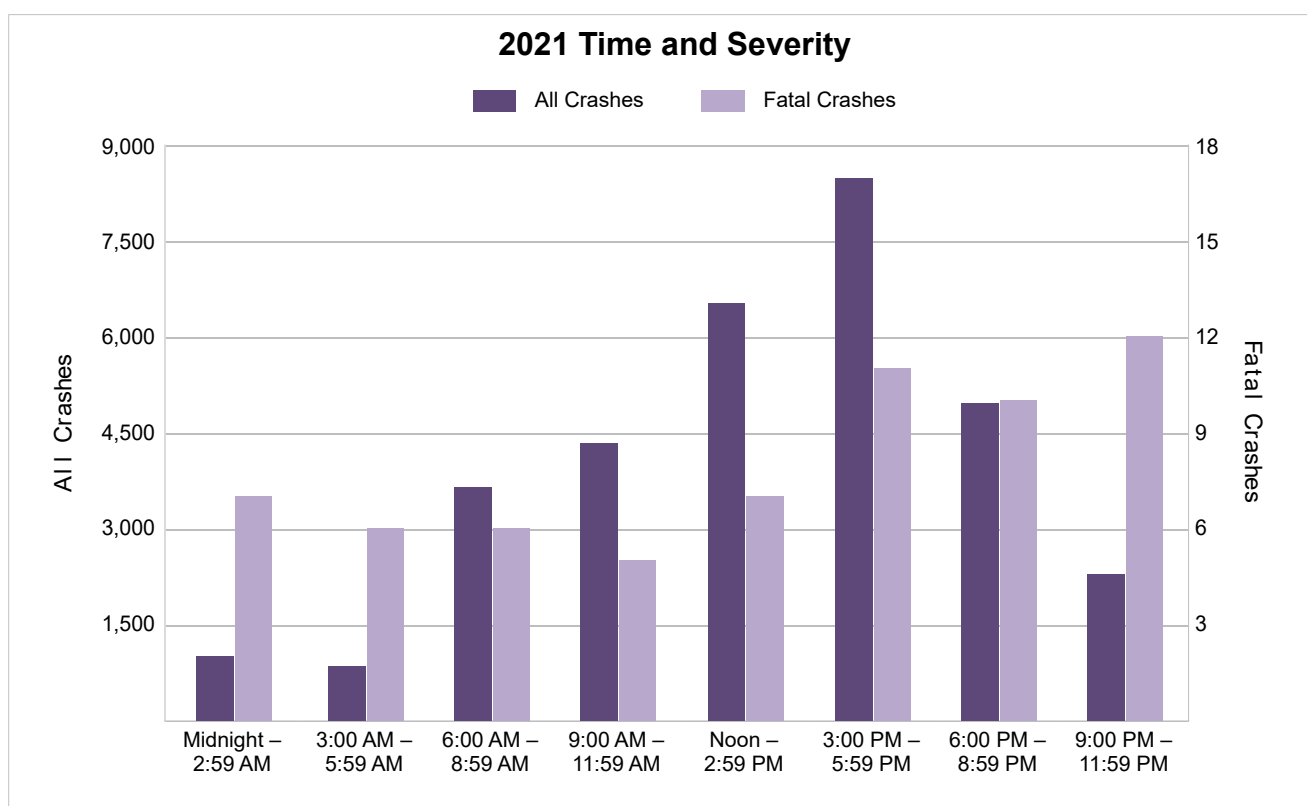
5-Year Trend Fatal Crashes by Time of Day



TSN Oakland County/TIA Early Birds (continued)

2021 - Time and Severity

Time of Day	All Crashes		Fatal Crashes		Injury Crashes			PDO Crashes
	Number	% of Total	Number	% of Fatal	A	B	C	Number
Midnight – 2:59 AM	1,004	3.1	7	10.9	36	95	91	775
3:00 AM – 5:59 AM	844	2.6	6	9.4	12	79	91	656
6:00 AM – 8:59 AM	3,647	11.4	6	9.4	33	248	376	2,984
9:00 AM – 11:59 AM	4,331	13.5	5	7.8	32	291	487	3,516
Noon – 2:59 PM	6,512	20.3	7	10.9	60	448	720	5,277
3:00 PM – 5:59 PM	8,465	26.4	11	17.2	75	576	1,008	6,795
6:00 PM – 8:59 PM	4,952	15.5	10	15.6	81	357	541	3,963
9:00 PM – 11:59 PM	2,281	7.1	12	18.8	44	198	241	1,786
Unknown	2	0.0	0	0.0	0	0	0	2
Total	32,038	100.0	64	100.0	373	2,292	3,555	25,754

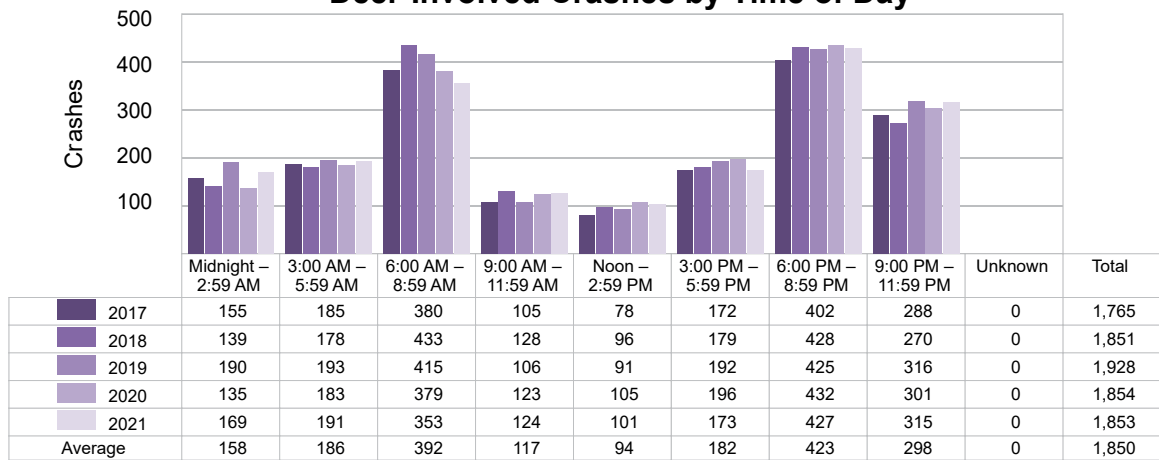


TSN Oakland County/TIA Early Birds (continued)

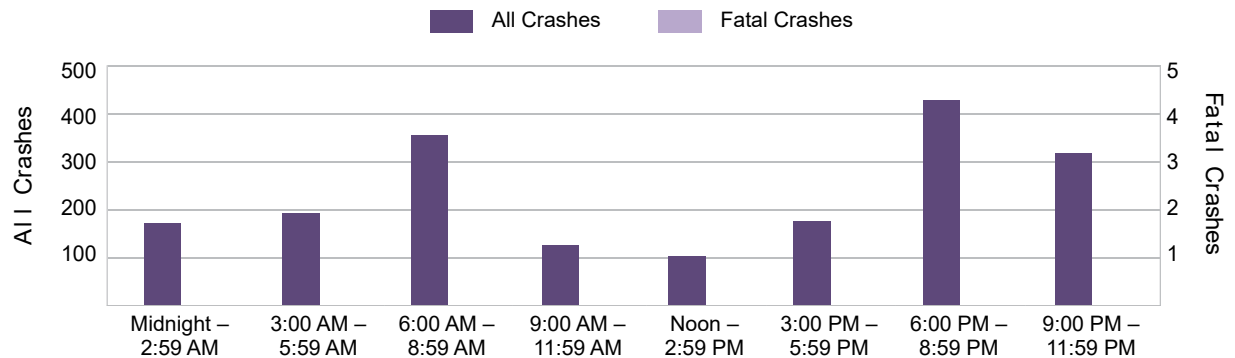
5-Year Trend - Deer-Involved Crashes by Time of Day

Time of Day	2017		2018		2019		2020		2021	
	Total Crashes	Fatal Crashes	Total Crashes	Fatal Crashes	Total Crashes	Fatal Crashes	Total Crashes	Fatal Crashes	Total Crashes	Fatal Crashes
Midnight – 2:59 AM	155	1	139	0	190	0	135	0	169	0
3:00 AM – 5:59 AM	185	0	178	0	193	0	183	0	191	0
6:00 AM – 8:59 AM	380	0	433	0	415	0	379	0	353	0
9:00 AM – 11:59 AM	105	0	128	0	106	0	123	0	124	0
Noon – 2:59 PM	78	0	96	0	91	0	105	0	101	0
3:00 PM – 5:59 PM	172	0	179	0	192	0	196	0	173	0
6:00 PM – 8:59 PM	402	0	428	0	425	0	432	0	427	0
9:00 PM – 11:59 PM	288	0	270	0	316	0	301	0	315	0
Unknown	0	0	0	0	0	0	0	0	0	0
Total	1,765	1	1,851	0	1,928	0	1,854	0	1,853	0

5-Year Trend Deer-Involved Crashes by Time of Day



2021 Time and Severity of Deer-Involved Crashes

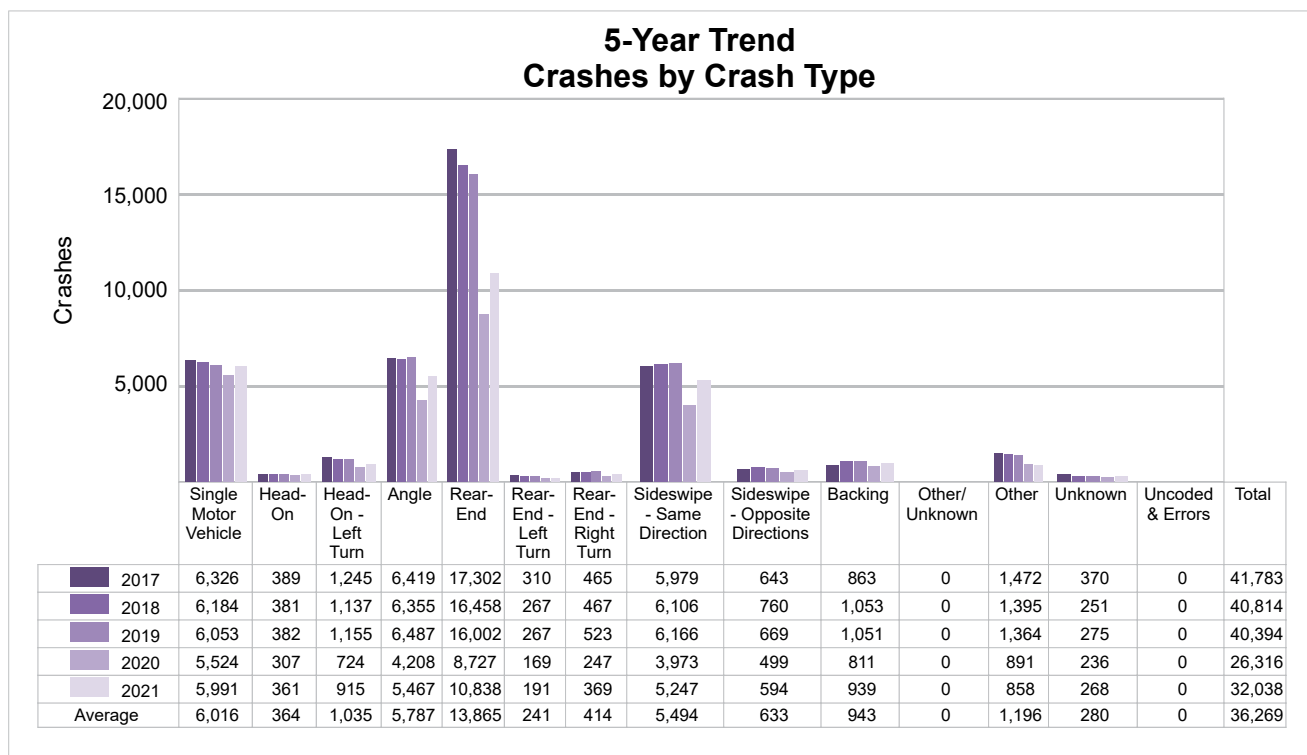


There were no fatal deer-involved crashes in TSN Oakland County/TIA Early Birds in 2021.

TSN Oakland County/TIA Early Birds (continued)

5-Year Trend - Crashes by Crash Type

Crash Type	2017		2018		2019		2020		2021	
	Total Crashes	Fatal Crashes	Total Crashes	Fatal Crashes	Total Crashes	Fatal Crashes	Total Crashes	Fatal Crashes	Total Crashes	Fatal Crashes
Single Motor Vehicle	6,326	24	6,184	23	6,053	38	5,524	31	5,991	33
Head-On	389	13	381	7	382	4	307	5	361	3
Head-On - Left Turn	1,245	0	1,137	3	1,155	5	724	3	915	5
Angle	6,419	8	6,355	3	6,487	9	4,208	5	5,467	11
Rear-End	17,302	11	16,458	8	16,002	2	8,727	7	10,838	7
Rear-End - Left Turn	310	0	267	0	267	0	169	0	191	0
Rear-End - Right Turn	465	0	467	0	523	0	247	0	369	0
Sideswipe - Same Direction	5,979	2	6,106	1	6,166	0	3,973	0	5,247	0
Sideswipe - Opposite Directions	643	0	760	3	669	1	499	2	594	0
Backing	863	0	1,053	0	1,051	0	811	0	939	0
Other/Unknown	0	0	0	0	0	0	0	0	0	0
Other	1,472	9	1,395	5	1,364	4	891	2	858	5
Unknown	370	1	251	0	275	0	236	0	268	0
Uncoded & Errors	0	0	0	0	0	0	0	0	0	0
Total	41,783	68	40,814	53	40,394	63	26,316	55	32,038	64

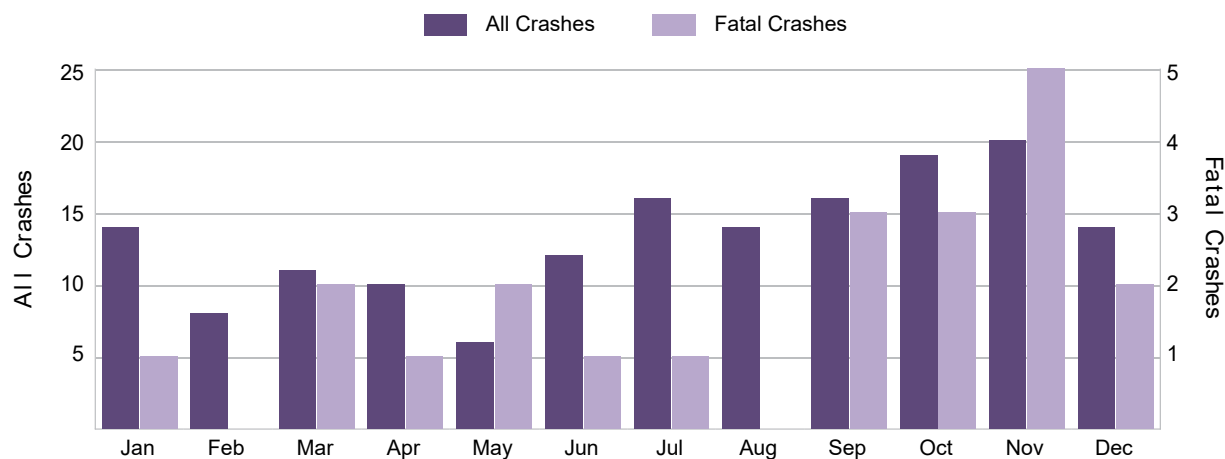


TSN Oakland County/TIA Early Birds (continued)

5-Year Trend - Pedestrian-Involved Crashes by Month

Month	2017		2018		2019		2020		2021	
	Total Crashes	Fatal Crashes	Total Crashes	Fatal Crashes	Total Crashes	Fatal Crashes	Total Crashes	Fatal Crashes	Total Crashes	Fatal Crashes
January	13	1	21	0	21	1	31	2	14	1
February	16	3	15	1	18	2	12	1	8	0
March	16	1	15	0	20	2	10	3	11	2
April	10	1	11	0	12	2	5	1	10	1
May	11	0	16	0	15	0	5	1	6	2
June	11	0	13	1	9	0	17	2	12	1
July	19	1	18	1	23	3	9	1	16	1
August	21	2	8	1	10	3	13	1	14	0
September	23	3	19	0	25	3	14	2	16	3
October	22	3	20	0	23	4	25	3	19	3
November	24	3	16	1	21	0	8	0	20	5
December	27	2	24	2	16	1	11	2	14	2
Total	213	20	196	7	213	21	160	19	160	21

2021 Pedestrian-Involved Crashes by Month

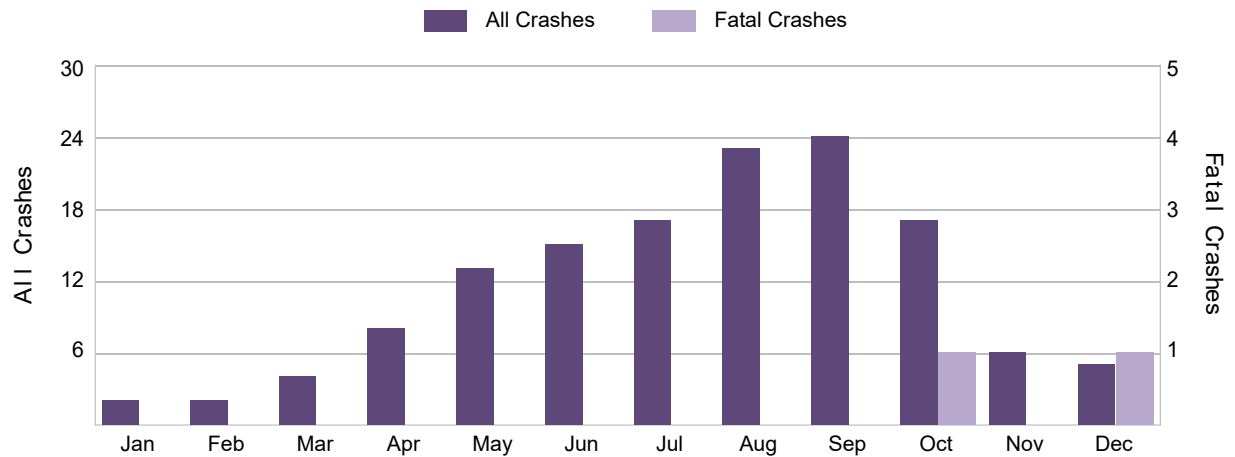


TSN Oakland County/TIA Early Birds (continued)

5-Year Trend - Bicyclist-Involved Crashes by Month

Month	2017		2018		2019		2020		2021	
	Total Crashes	Fatal Crashes	Total Crashes	Fatal Crashes	Total Crashes	Fatal Crashes	Total Crashes	Fatal Crashes	Total Crashes	Fatal Crashes
January	1	0	4	1	3	0	3	0	2	0
February	3	0	3	0	1	0	2	0	2	0
March	3	0	5	0	2	0	6	0	4	0
April	8	0	8	0	7	0	8	0	8	0
May	14	0	22	0	18	0	6	0	13	0
June	19	0	30	1	15	0	35	0	15	0
July	37	1	27	0	27	0	23	1	17	0
August	28	0	27	0	26	0	28	0	23	0
September	22	0	33	0	24	0	20	1	24	0
October	15	0	13	0	18	0	15	0	17	1
November	10	0	10	0	4	0	15	0	6	0
December	2	0	5	0	6	1	1	0	5	1
Total	162	1	187	2	151	1	162	2	136	2

2021 Bicyclist-Involved Crashes by Month



TSN Oakland County/TIA Early Birds (continued)

2021 - Reported Motor Vehicle Crashes by County

County	Crashes												
	Total	Fatal	Injury	Property Damage	Inter-State	US Route	State Route	Local Street	Alcohol-Involved	Drug-Involved	Deer-Involved	Pedestrian-Involved	Bicyclist-Involved
Oakland	32,038	64	6,220	25,754	3,906	1,865	5,307	20,943	944	263	1,853	160	136
Total	32,038	64	6,220	25,754	3,906	1,865	5,307	20,943	944	263	1,853	160	136

2021 - People in Reported Motor Vehicle Crashes by County

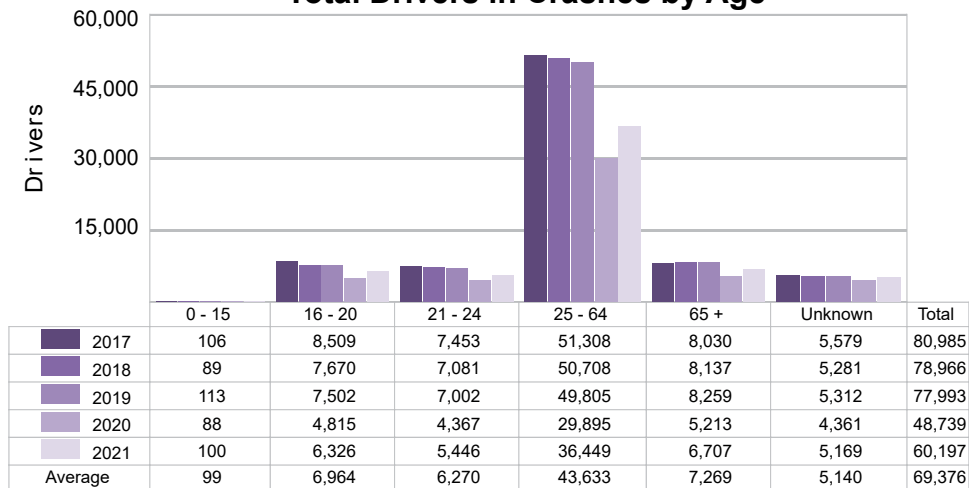
County	People					
	Fatalities	Suspected Serious Injuries	Suspected Minor Injuries	Possible Injuries	No Injuries	Uncoded & Errors
Oakland	66	896	5,770	9,137	56,442	5,519
Total	66	896	5,770	9,137	56,442	5,519

TSN Oakland County/TIA Early Birds (continued)

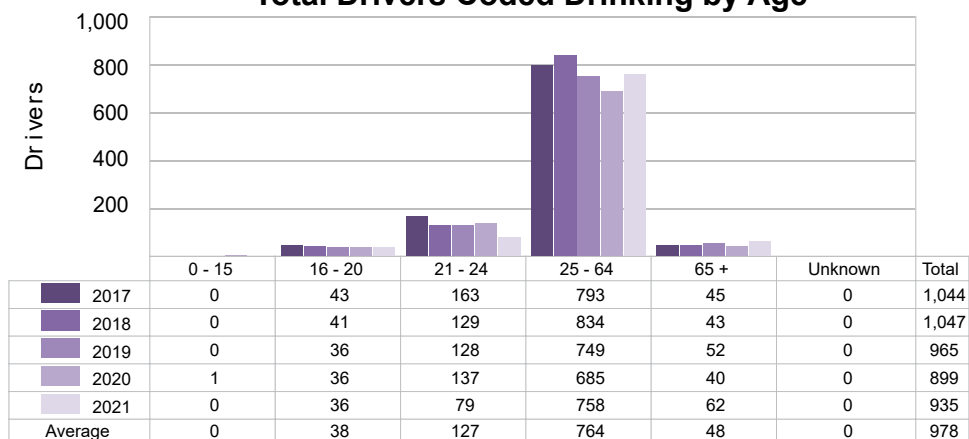
5-Year Trend - Drivers in Crashes Coded Drinking by Driver Age

Driver Age	2017		2018		2019		2020		2021	
	Total Drivers in Crashes	Total Drivers Coded Drinking	Total Drivers in Crashes	Total Drivers Coded Drinking	Total Drivers in Crashes	Total Drivers Coded Drinking	Total Drivers in Crashes	Total Drivers Coded Drinking	Total Drivers in Crashes	Total Drivers Coded Drinking
0 - 15	106	0	89	0	113	0	88	1	100	0
16 - 20	8,509	43	7,670	41	7,502	36	4,815	36	6,326	36
21 - 24	7,453	163	7,081	129	7,002	128	4,367	137	5,446	79
25 - 64	51,308	793	50,708	834	49,805	749	29,895	685	36,449	758
65 +	8,030	45	8,137	43	8,259	52	5,213	40	6,707	62
Unknown	5,579	0	5,281	0	5,312	0	4,361	0	5,169	0
Total	80,985	1,044	78,966	1,047	77,993	965	48,739	899	60,197	935

5-Year Trend
Total Drivers in Crashes by Age



5-Year Trend
Total Drivers Coded Drinking by Age



TSN Oakland County/TIA Early Birds (continued)

2021 - Bodily Alcohol Concentration (BAC) Results Among All Vehicle Drivers in Alcohol-Involved Crashes by Age

Age Group	Drivers				BAC Result Range for Drivers Coded Drinking				
	Total Drivers in Alcohol-Involved Crashes	Total Drivers Tested in all Crashes	Total Drivers Coded Drinking, Tested	Total Drivers Coded Drinking	BAC = 0.00	BAC 0.01 g/dL to 0.07 g/dL	BAC 0.08 g/dL to 0.16 g/dL	BAC 0.17 g/dL and Above	BAC Not Reported
0 - 15	2	0	0	0	0	0	0	0	0
16 - 20	69	44	32	36	0	5	13	7	11
21 - 24	123	92	70	79	0	7	22	12	38
25 - 64	1,103	833	685	758	0	37	160	236	325
65 +	96	70	60	62	0	3	13	21	25
Unknown	121	0	0	0	0	0	0	0	0
Total	1,514	1,039	847	935	0	52	208	276	399

Notes: BAC measured in grams (g) per deciliter (dL).

BAC may not be reported if drivers are not tested or if the results are not available immediately (as in the case of a blood test).

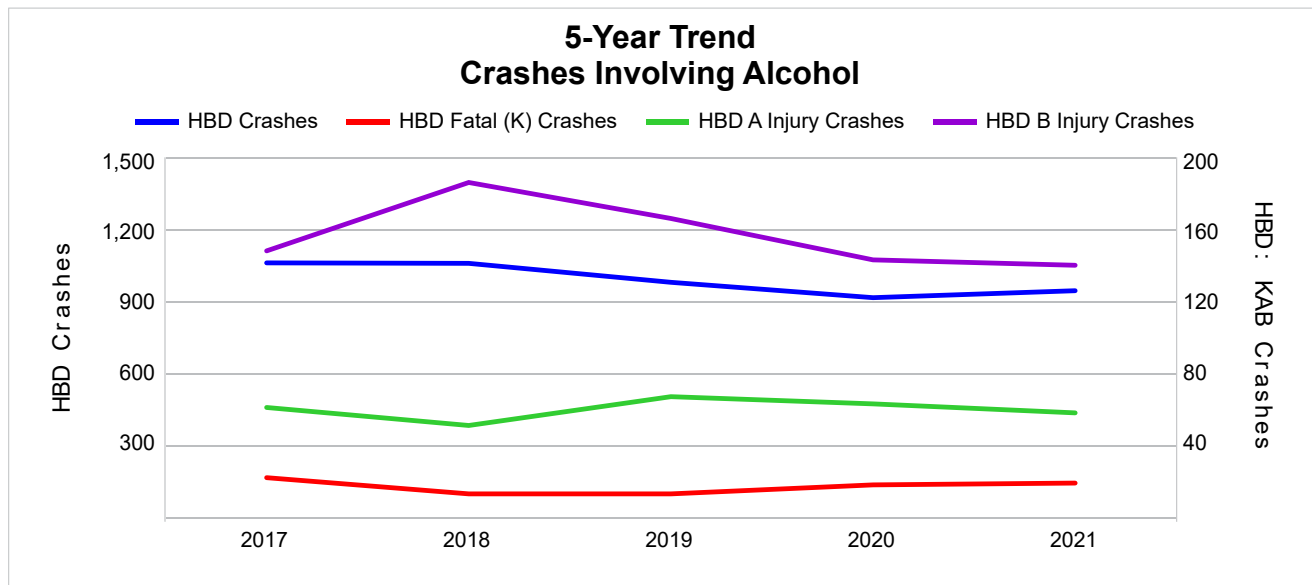
A driver may be coded by the officer as drinking even though no test is administered.

5-Year Trend - Crashes Involving Alcohol

Year	All Crashes	HBD Crashes	% HBD	Fatal Crashes	HBD Fatal Crashes	% HBD	A Injury Crashes	HBD A Injury Crashes	% HBD	B Injury Crashes	HBD B Injury Crashes	% HBD
2017	41,783	1,060	2.5	68	22	32.4	386	61	15.8	2,528	148	5.9
2018	40,814	1,058	2.6	53	13	24.5	352	51	14.5	2,471	186	7.5
2019	40,394	979	2.4	63	13	20.6	365	67	18.4	2,424	166	6.8
2020	26,316	915	3.5	55	18	32.7	332	63	19.0	1,841	143	7.8
2021	32,038	944	2.9	64	19	29.7	373	58	15.5	2,292	140 *	6.1

Note: * Indicates that the most recent year is the lowest number or percentage reported in the 5-year period in that column.

** Indicates that the most recent year is the highest number or percentage reported in the 5-year period in that column.



Note: Had-Been-Drinking (HBD)

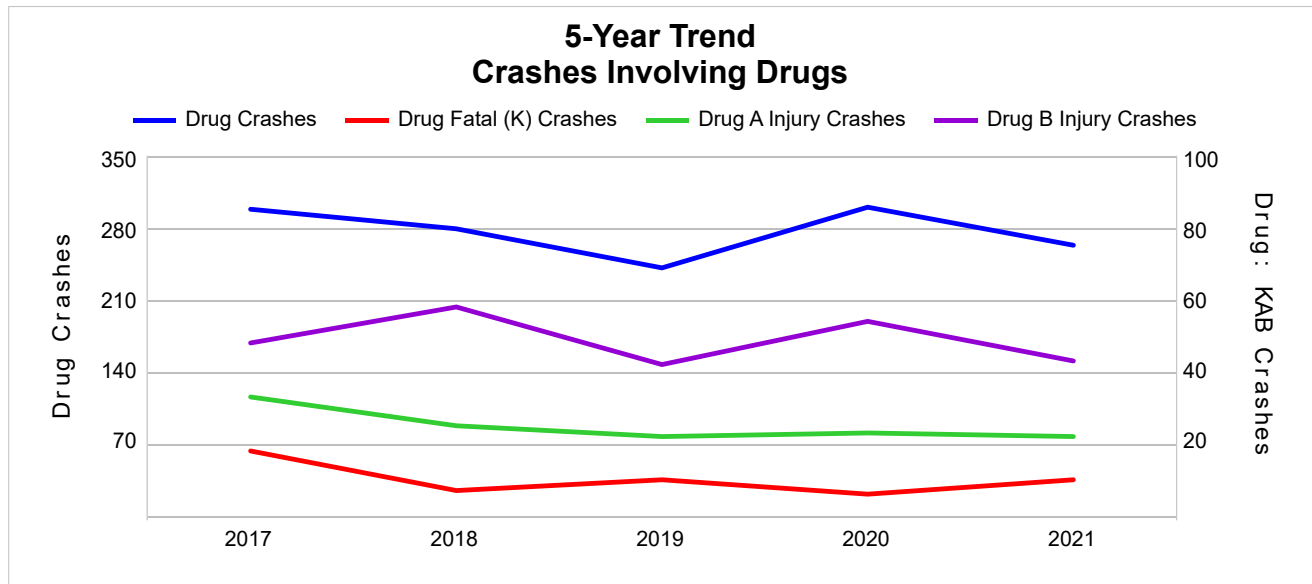
TSN Oakland County/TIA Early Birds (continued)

5-Year Trend - Crashes Involving Drugs

Year	All Crashes	Drug Crashes	% Drug	Fatal Crashes	Drug Fatal Crashes	% Drug	A Injury Crashes	Drug A Injury Crashes	% Drug	B Injury Crashes	Drug B Injury Crashes	% Drug
2017	41,783	298	0.7	68	18	26.5	386	33	8.5	2,528	48	1.9
2018	40,814	279	0.7	53	7	13.2	352	25	7.1	2,471	58	2.3
2019	40,394	241	0.6	63	10	15.9	365	22	6.0	2,424	42	1.7
2020	26,316	300	1.1	55	6	10.9	332	23	6.9	1,841	54	2.9
2021	32,038	263	0.8	64	10	15.6	373	22	5.9 *	2,292	43	1.9

Note: * Indicates that the most recent year is the lowest number or percentage reported in the 5-year period in that column.

** Indicates that the most recent year is the highest number or percentage reported in the 5-year period in that column.



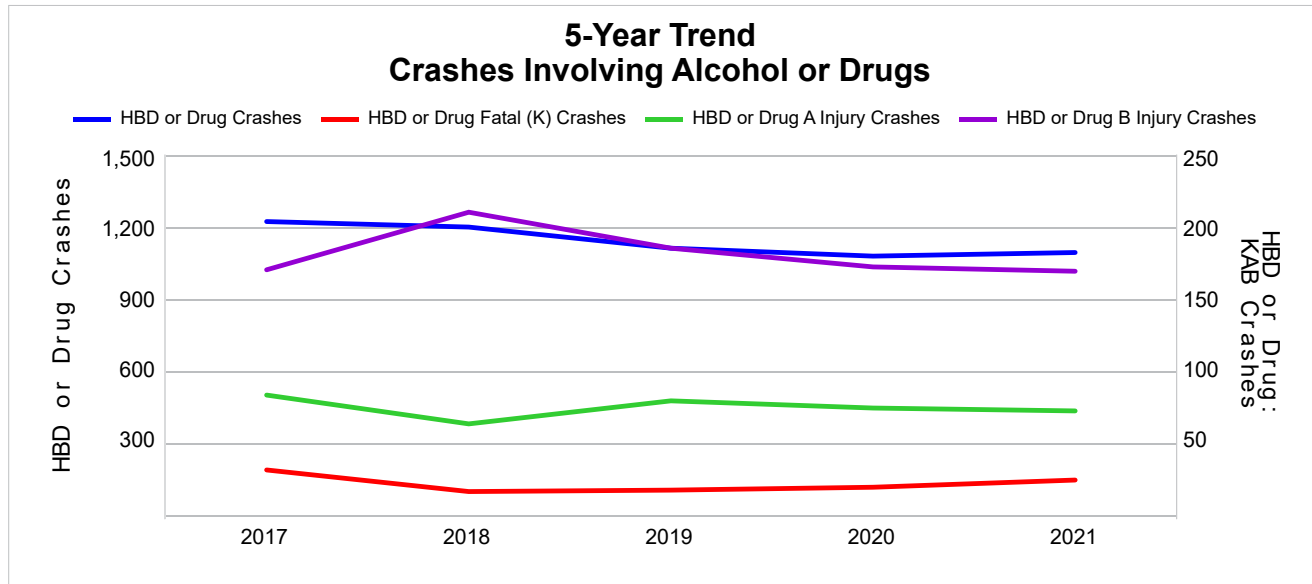
TSN Oakland County/TIA Early Birds (continued)

5-Year Trend - Crashes Involving Alcohol or Drugs

Year	All Crashes	HBD or Drug Crashes	% HBD or Drug	Fatal Crashes	HBD or Drug Fatal Crashes	% HBD or Drug	A Injury Crashes	HBD or Drug A Injury Crashes	% HBD or Drug	B Injury Crashes	HBD or Drug B Injury Crashes	% HBD or Drug
2017	41,783	1,221	2.9	68	31	45.6	386	83	21.5	2,528	170	6.7
2018	40,814	1,198	2.9	53	16	30.2	352	63	17.9	2,471	210	8.5
2019	40,394	1,110	2.7	63	17	27.0	365	79	21.6	2,424	185	7.6
2020	26,316	1,077	4.1	55	19	34.5	332	74	22.3	1,841	172	9.3
2021	32,038	1,092	3.4	64	24	37.5	373	72	19.3	2,292	169 *	7.4

Note: * Indicates that the most recent year is the lowest number or percentage reported in the 5-year period in that column.

** Indicates that the most recent year is the highest number or percentage reported in the 5-year period in that column.



Note: Had-Been-Drinking (HBD)

TSN Oakland County/TIA Early Birds
(continued)

2021 - Restraints Worn Among Vehicle Drivers and Injured Passengers by Vehicle Type

Vehicle Type	Total Occupants			Fatalities			A - Suspected Serious			B - Suspected Minor			C - Possible Injury			No Injury		
	Total	Used Restraint	%	Total	Used Restraint	%	Total	Used Restraint	%	Total	Used Restraint	%	Total	Used Restraint	%	Total	Used Restraint	%
Passenger Car, SUV, Van	52,778	47,592	90.2	32	14	43.8	294	225	76.5	2,363	2,238	94.7	4,761	4,583	96.3	41,453	40,532	97.8
Motor Home	55	55	100.0	0	0	0.0	0	0	0.0	2	2	100.0	5	5	100.0	48	48	100.0
Pickup Truck	5,645	5,009	88.7	1	0	0.0	25	20	80.0	154	141	91.6	360	349	96.9	4,582	4,499	98.2
Small Truck Under 10,000 lbs. GVWR	164	144	87.8	0	0	0.0	2	1	50.0	3	3	100.0	9	9	100.0	132	131	99.2
Motorcycle	273	152	55.7	6	4	66.7	55	27	49.1	98	65	66.3	38	24	63.2	59	32	54.2
Moped/Goped	18	4	22.2	0	0	0.0	4	0	0.0	9	3	33.3	3	0	0.0	1	1	100.0
Go-Cart/Golf Cart	6	0	0.0	0	0	0.0	1	0	0.0	2	0	0.0	1	0	0.0	1	0	0.0
Snowmobile	0	0	0.0	0	0	0.0	0	0	0.0	0	0	0.0	0	0	0.0	0	0	0.0
Off-Road Vehicle (ORV)/All-Terrain Vehicle (ATV)	18	4	22.2	1	0	0.0	4	1	25.0	6	1	16.7	2	1	50.0	4	1	25.0
Other (non-registered farm equipment, construction equipment, snow plows, etc.)	117	70	59.8	2	1	50.0	4	2	50.0	4	2	50.0	5	3	60.0	72	62	86.1
Truck/Bus (over 10,000 lbs. GVWR/8+ occupants/ hazmat placard)	1,860	1,648	88.6	1	1	100.0	2	2	100.0	24	20	83.3	60	50	83.3	1,620	1,575	97.2
Uncoded & Errors	843	1	0.1	0	0	0.0	0	0	0.0	0	0	0.0	1	1	100.0	0	0	0.0
Total	61,777	54,679	88.5	43	20	46.5	391	278	71.1	2,665	2,475	92.9	5,245	5,025	95.8	47,972	46,881	97.7

Note: Restraint Use includes shoulder belt only used, lap belt only used, both lap and shoulder belts used, child restraint used, restraint failure, and helmet worn.

2021 - Restraints Worn Among Vehicle Drivers and Injured Passengers by Age

Age Group	Total Occupants			Fatalities			A - Suspected Serious			B - Suspected Minor			C - Possible Injury			No Injury		
	Total	Used Restraint	%	Total	Used Restraint	%	Total	Used Restraint	%	Total	Used Restraint	%	Total	Used Restraint	%	Total	Used Restraint	%
0 - 15	491	436	88.8	1	0	0.0	12	3	25.0	75	61	81.3	322	303	94.1	78	69	88.5
16 - 20	6,555	6,344	96.8	3	0	0.0	49	31	63.3	274	256	93.4	524	492	93.9	5,675	5,565	98.1
21 - 24	5,559	5,351	96.3	2	0	0.0	30	20	66.7	288	259	89.9	484	457	94.4	4,729	4,615	97.6
25 - 64	37,088	35,807	96.5	28	16	57.1	243	171	70.4	1,656	1,537	92.8	3,198	3,076	96.2	31,746	31,007	97.7
65 +	6,914	6,739	97.5	9	4	44.4	57	53	93.0	372	362	97.3	715	696	97.3	5,743	5,624	97.9
Unknown	5,170	2	0.0	0	0	0.0	0	0	0.0	0	0	0.0	2	1	50.0	1	1	100.0
Total	61,777	54,679	88.5	43	20	46.5	391	278	71.1	2,665	2,475	92.9	5,245	5,025	95.8	47,972	46,881	97.7

Note: Restraint Use includes shoulder belt only used, lap belt only used, both lap and shoulder belts used, child restraint used, restraint failure, and helmet worn.

TSN Oakland County/TIA Early Birds (continued)

5-Year Trend - Restraint Use Among Drivers

Restraint Use	2017			2018			2019			2020			2021		
	Drivers	Fatal Drivers	Injured Drivers	Drivers	Fatal Drivers	Injured Drivers	Drivers	Fatal Drivers	Injured Drivers	Drivers	Fatal Drivers	Injured Drivers	Drivers	Fatal Drivers	Injured Drivers
No Belts Available	32	1	2	13	0	0	39	0	6	25	0	7	24	2	11
Shoulder Belt Only Used	49	0	7	44	0	4	32	0	8	22	0	4	29	0	8
Lap Belt Only Used	33	0	4	23	0	1	23	0	3	20	0	4	15	0	5
Both Lap & Shoulder Belt Used	73,288	20	7,733	71,880	12	7,460	70,897	17	7,244	42,882	14	4,650	53,062	15	6,230
No Belts Used	210	13	115	210	8	103	217	10	106	211	5	103	271	10	151
Child Restraint Used - Forward Facing	0	0	0	0	0	0	0	0	0	0	0	0	0	0	0
Child Restraint Not Used, Unavailable or Improper Use	0	0	0	0	0	0	0	0	0	0	0	0	0	0	0
Child Restraint Used - Rear Facing	0	0	0	0	0	0	0	0	0	0	0	0	0	0	0
Child Restraint Used - Booster Seat	0	0	0	0	0	0	0	0	0	0	0	0	0	0	0
Restraint Failure	1	0	0	0	0	0	1	0	0	0	0	0	0	0	0
Restraint Use Unknown	5,286	3	124	4,837	4	84	4,894	2	108	3,820	2	101	4,863	5	111
Helmet Worn	200	4	146	175	9	124	169	2	119	148	4	116	157	4	120
Helmet Not Worn	76	3	55	63	1	51	55	1	45	85	3	66	112	1	85
Helmet Use Unknown	12	0	7	7	1	3	6	0	3	13	1	7	10	1	5
Uncoded & Errors	1,798	0	0	1,714	0	0	1,660	0	0	1,513	0	0	1,654	0	0
Total	80,985	44	8,193	78,966	35	7,830	77,993	32	7,642	48,739	29	5,058	60,197	38	6,726

5-Year Trend - Restraint Use Among Drivers Coded Drinking

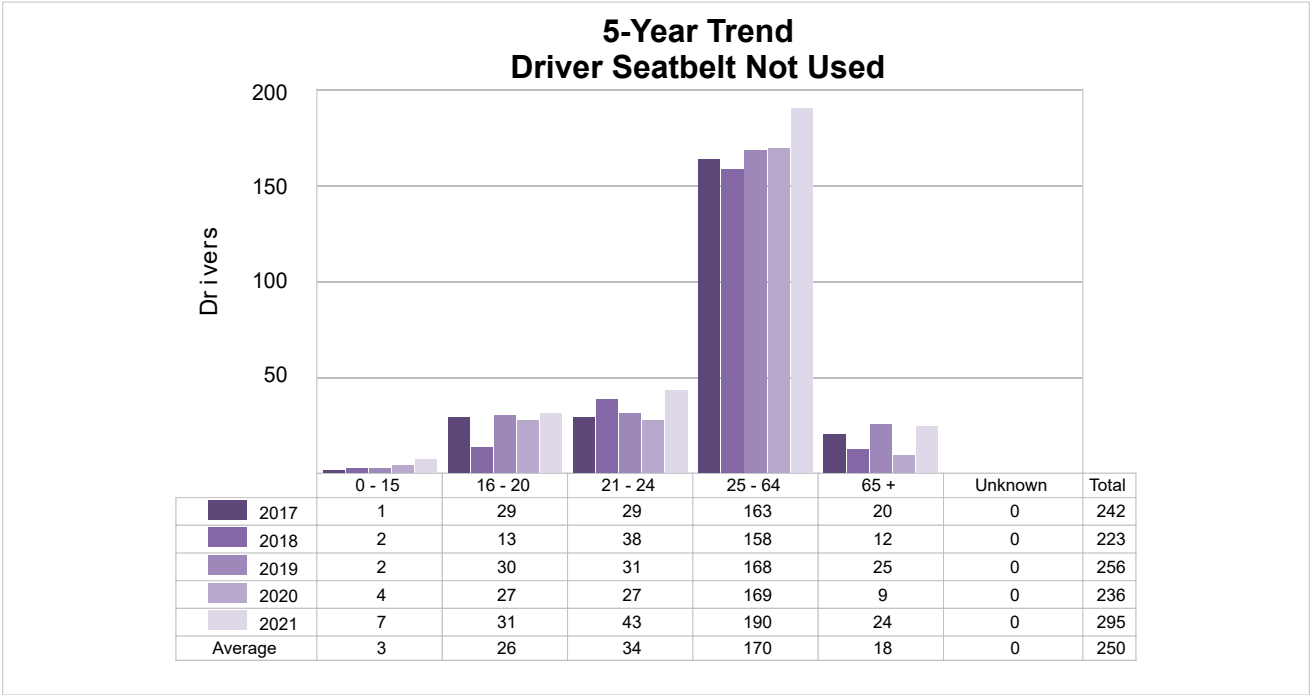
Restraint Use	2017			2018			2019			2020			2021		
	Drivers	Fatal Drivers	Injured Drivers	Drivers	Fatal Drivers	Injured Drivers	Drivers	Fatal Drivers	Injured Drivers	Drivers	Fatal Drivers	Injured Drivers	Drivers	Fatal Drivers	Injured Drivers
No Belts Available	0	0	0	1	0	0	2	0	2	1	0	1	1	0	1
Shoulder Belt Only Used	0	0	0	0	0	0	1	0	1	0	0	0	0	0	0
Lap Belt Only Used	0	0	0	0	0	0	1	0	1	2	0	1	0	0	0
Both Lap & Shoulder Belt Used	864	3	201	868	1	214	810	2	224	719	1	199	765	2	197
No Belts Used	37	4	25	47	4	30	42	5	24	49	1	32	53	4	39
Child Restraint Used - Forward Facing	0	0	0	0	0	0	0	0	0	0	0	0	0	0	0
Child Restraint Not Used, Unavailable or Improper Use	0	0	0	0	0	0	0	0	0	0	0	0	0	0	0
Child Restraint Used - Rear Facing	0	0	0	0	0	0	0	0	0	0	0	0	0	0	0
Child Restraint Used - Booster Seat	0	0	0	0	0	0	0	0	0	0	0	0	0	0	0
Restraint Failure	0	0	0	0	0	0	0	0	0	0	0	0	0	0	0
Restraint Use Unknown	124	0	37	117	2	28	97	0	31	109	1	29	99	0	17
Helmet Worn	6	1	4	7	1	6	3	0	2	7	1	6	5	0	5
Helmet Not Worn	12	1	10	7	0	7	8	0	8	12	1	9	11	0	11
Helmet Use Unknown	1	0	1	0	0	0	1	0	1	0	0	0	1	1	0
Uncoded & Errors	0	0	0	0	0	0	0	0	0	0	0	0	0	0	0
Total	1,044	9	278	1,047	8	285	965	7	294	899	5	277	935	7	270

TSN Oakland County/TIA Early Birds (continued)

5-Year Trend - Seatbelt Not Used Among Drivers by Age

Age Group	2017			2018			2019			2020			2021		
	Drivers	Fatal Drivers	Injured Drivers	Drivers	Fatal Drivers	Injured Drivers	Drivers	Fatal Drivers	Injured Drivers	Drivers	Fatal Drivers	Injured Drivers	Drivers	Fatal Drivers	Injured Drivers
0 - 15	1	0	0	2	0	1	2	0	0	4	0	2	7	0	3
16 - 20	29	3	15	13	0	7	30	0	16	27	0	15	31	1	17
21 - 24	29	1	16	38	2	21	31	2	14	27	0	16	43	2	29
25 - 64	163	6	77	158	4	70	168	5	71	169	4	74	190	7	105
65 +	20	4	9	12	2	4	25	3	11	9	1	3	24	2	8
Unknown	0	0	0	0	0	0	0	0	0	0	0	0	0	0	0
Total	242	14	117	223	8	103	256	10	112	236	5	110	295	12	162

Note: Seatbelt Not Used includes no belts available or no belts used.

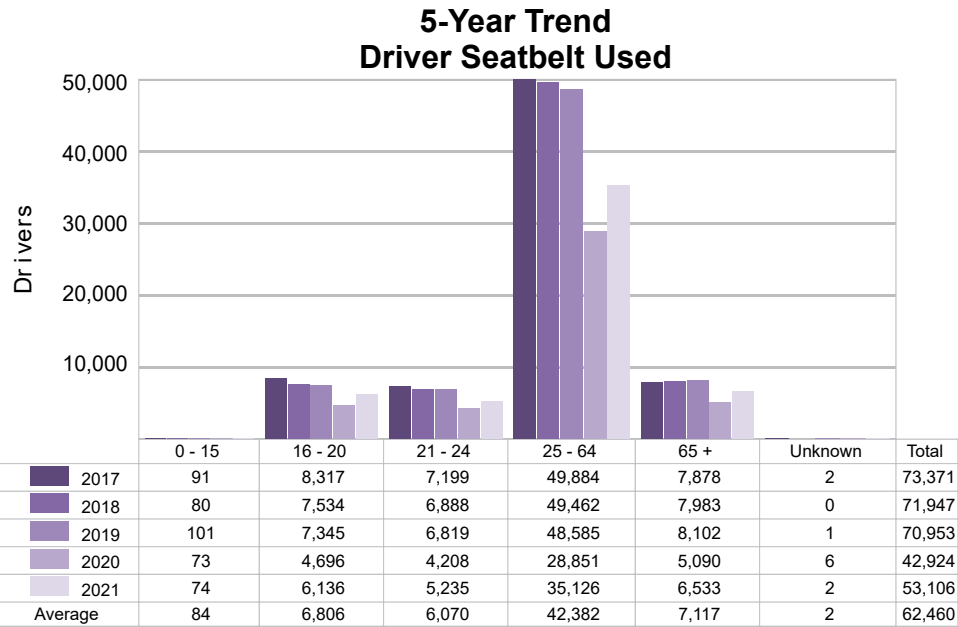


TSN Oakland County/TIA Early Birds (continued)

5-Year Trend - Seatbelt Used Among Drivers by Age

Age Group	2017			2018			2019			2020			2021		
	Drivers	Fatal Drivers	Injured Drivers	Drivers	Fatal Drivers	Injured Drivers	Drivers	Fatal Drivers	Injured Drivers	Drivers	Fatal Drivers	Injured Drivers	Drivers	Fatal Drivers	Injured Drivers
0 - 15	91	0	2	80	0	9	101	0	5	73	0	5	74	0	5
16 - 20	8,317	2	752	7,534	0	682	7,345	1	607	4,696	0	454	6,136	0	575
21 - 24	7,199	2	741	6,888	0	693	6,819	3	680	4,208	0	424	5,235	0	624
25 - 64	49,884	10	5,240	49,462	6	5,140	48,585	5	4,986	28,851	9	3,097	35,126	11	4,131
65 +	7,878	6	1,009	7,983	6	941	8,102	8	977	5,090	5	678	6,533	4	907
Unknown	2	0	0	0	0	0	1	0	0	6	0	0	2	0	1
Total	73,371	20	7,744	71,947	12	7,465	70,953	17	7,255	42,924	14	4,658	53,106	15	6,243

Note: Seatbelt Used includes shoulder belt only used, lap belt only used, both lap and shoulder belts used, and restraint failure.



TSN Oakland County/TIA Early Birds (continued)

5-Year Trend - Drivers in Crashes by Hazardous Action

Hazardous Action	2017		2018		2019		2020		2021	
	Total Drivers in Crashes	Drivers in Fatal Crashes	Total Drivers in Crashes	Drivers in Fatal Crashes	Total Drivers in Crashes	Drivers in Fatal Crashes	Total Drivers in Crashes	Drivers in Fatal Crashes	Total Drivers in Crashes	Drivers in Fatal Crashes
None	39,218	67	38,243	38	37,752	41	23,169	43	28,691	39
Speed Too Fast	2,455	7	2,456	9	2,398	7	1,839	6	2,013	14
Speed Too Slow	11	0	18	1	11	0	11	0	12	0
Failed to Yield	7,356	7	7,317	6	7,464	9	4,527	2	5,967	13
Disregard Traffic Control	1,252	2	1,279	1	1,228	3	1,012	4	1,188	0
Drove Wrong Way	41	1	49	0	31	0	43	1	57	0
Drove Left of Center	332	9	336	4	302	3	243	3	303	0
Improper Passing	319	0	343	1	411	0	233	0	332	0
Improper Lane Use	2,388	0	2,406	1	2,392	0	1,551	0	2,020	2
Improper Turn	735	0	697	0	734	1	504	0	660	0
Improper/No Signal	63	0	51	0	60	0	17	0	26	0
Improper Backing	969	0	1,035	1	989	0	738	0	890	0
Unable to Stop in Assured Clear Distance	16,500	7	15,721	6	15,345	2	8,006	7	10,063	4
Other	2,412	7	2,579	7	2,468	10	1,864	5	2,083	5
Unknown	4,109	12	3,834	6	3,975	11	3,035	13	3,667	14
Reckless Driving	251	3	226	4	191	1	211	6	201	4
Careless/Negligent Driving	1,238	3	1,044	3	1,017	1	689	2	833	2
Uncoded & Errors	1,336	1	1,332	0	1,225	3	1,047	0	1,191	0
Total	80,985	126	78,966	88	77,993	92	48,739	92	60,197	97

Office of Highway Safety Planning

Physical Address:
7150 Harris Drive
Dimondale, Michigan 48821

Mailing Address:
P.O. Box 30634
Lansing, Michigan 48909

Find us on the web:
MichiganTrafficCrashFacts.org
mtcf-info@umich.edu

