



2021

# Michigan Traffic Crash Facts

**MTCF**  
Michigan Traffic  
Crash Facts

## Reporting Criteria

Please pay particular attention to the wording when interpreting the three levels of data gathered for this report.

### Crash

The Crash Level analyzes data related to crash events and returns one result per crash.

Examples: Time, weather, and location.

### Units

The Units Level analyzes the experience of the units in the crash and returns one result per vehicle, driver, pedestrian, bicyclist, or train.

Examples: Vehicle type, driver condition, and unit events.

### People

The People Level analyzes the experience of the people involved in the crash and returns one result per occupant/person/party.

Examples: Age, injury severity, and seat belt or helmet use.

### **KABCO Injury Indicator:**

K = Killed

A = Suspected Serious Injury

B = Suspected Minor Injury

C = Possible Injury

O = No Injury

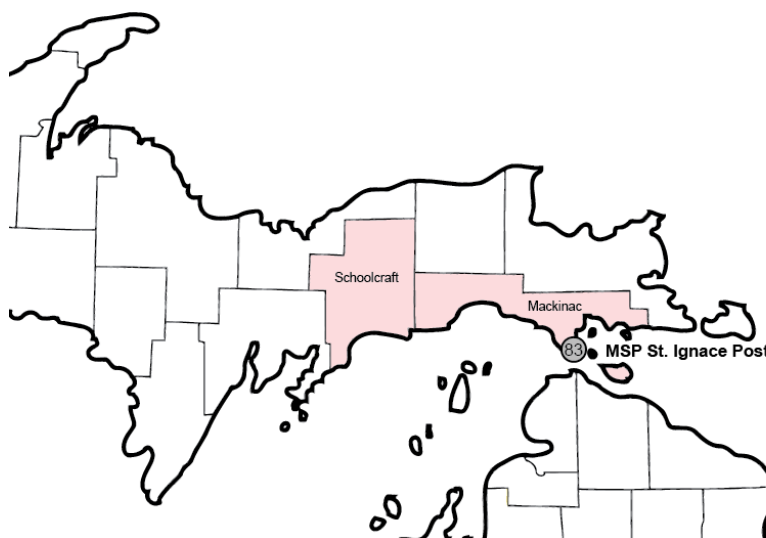
Property Damage Only (PDO)



## Michigan State Police (MSP) Post 83 - St. Ignace

### 2021 Traffic Crash Data & 2017-2021 5-Year Trends

MSP Post 83 - St. Ignace is comprised of Mackinac and Schoolcraft counties. Trend tables for this report are based on those counties.



### Sources:

The crashes in this report occurred on public roadways in Michigan and resulted in injuries, fatalities, or property damage (with \$1,000 as a reporting threshold). The information was gathered from Michigan Traffic Crash Report Forms (UD-10) submitted by local police departments, sheriff's offices, and the Michigan State Police. Other related information was obtained from the departments of Transportation, State, and Community Health.

## MSP Post 83 - St. Ignace

- There were 840 crashes in Post 83 during 2021. [Page 1]
- A total of 3 fatalities resulted from 3 fatal crashes in 2021 in Post 83. [Page 1]
- There were 131 injuries and 95 injury crashes. [Page 1]
- There were 742 property damage only crashes (no fatalities or injuries). [Page 1]
- December had the highest number of crashes (122). [Pages 1-2]
- August had the highest number of fatal crashes (2) and fatalities (2). [Pages 1-2]
- July had the highest number of injury crashes (17) and injuries (31). [Page 1]
- December had the highest number of property damage only crashes (115). [Page 1]
- Of all vehicles involved in fatal crashes, 1 (16.7%) was a motorcycle. [Page 1]
- Friday was the day of the week with the highest number of crashes (135) and Tuesday had the highest number of fatal crashes (2). [Pages 2-3]
- The 6:00 PM – 8:59 PM time period had the highest number of crashes (178). This holds true for every year between 2017 and 2021. The Midnight – 2:59 AM, 9:00 AM – 11:59 AM, and Noon – 2:59 PM time periods had the highest number of fatal crashes (1). [Pages 5-6]
- During the period from 2017 to 2021, the highest number of deer crashes occurred in 2018 (630). The 6:00 PM – 8:59 PM time period consistently had the highest number of deer-involved crashes during the five-year period. There were 0 fatal crashes involving deer in 2021. [Page 7]
- Mackinac County (59.0%) had the highest number of crashes in Post 83 in 2021, followed by Schoolcraft County (41.0%). [Page 11]
- Schoolcraft County (66.7%) had the highest number of fatalities in Post 83 in 2021, followed by Mackinac County (33.3%). [Page 11]
- The highest number of drivers in crashes (1,306) occurred during 2019 and the highest number of drivers coded drinking in crashes (37) occurred during 2020 within the five year period between 2017 and 2021. [Page 12]
- A total of 28 crashes involved alcohol in 2021. [Page 13]
- Alcohol-involved fatal crashes were the highest in 2019 during the five-year period from 2017 to 2021 at 3. [Page 13]
- A total of 13 crashes, 2 fatal crashes, and 2 suspected injury crashes involved drugs in 2021. [Page 14]
- There were 940 drivers wearing seatbelts and 12 drivers not wearing seatbelts in crashes in 2021. Of the 12 drivers not wearing seatbelts, 1 (8.3%) were killed and 7 (58.3%) were injured. [Pages 17-19]
- The most common hazardous action coded for drivers in 2021 in all crashes was speed too fast (99), while the most common hazardous actions coded for drivers in fatal crashes were unable to stop in assured clear distance, unknown, and careless/negligent driving (1). [Page 20]

## 2021 - Crashes and Injury by Month

Month	Crashes				People	
	Total	Fatal	Injury	Property Damage Only (PDO)	Fatalities	Injuries
January	74	0	5	69	0	6
February	66	0	2	64	0	3
March	79	0	3	76	0	3
April	45	0	6	39	0	7
May	50	0	5	45	0	6
June	72	1	13	58	1	17
July	62	0	17	45	0	31
August	55	2	15	38	2	23
September	68	0	13	55	0	17
October	56	0	5	51	0	5
November	91	0	4	87	0	4
December	122	0	7	115	0	9
<b>Total</b>	<b>840</b>	<b>3</b>	<b>95</b>	<b>742</b>	<b>3</b>	<b>131</b>

## 2021 - Driver Statistics

Age Group	MSP Post 83 - St. Ignace			Driver Rates	
	2019 Population*	Licensed Drivers	Drivers in Crashes	Per 10k Population	Per 10k Licensed
0 - 15	2,702	80	4	14.8	500.0
16 - 20	881	733	85	964.8	1,159.6
21 - 24	700	616	84	1,200.0	1,363.6
25 - 64	9,297	8,635	678	729.3	785.2
65 +	5,313	5,549	153	288.0	275.7
Unknown	0	0	23	--	--
<b>Total</b>	<b>18,893</b>	<b>15,613</b>	<b>1,027</b>	<b>543.6</b>	<b>657.8</b>

\*2021 Population of Michigan Counties (by single-year of age) not yet available from U.S. Census Bureau.

## 2021 - Vehicles in Crashes

Vehicle Type	Motor Vehicles		Fatal Crashes		Injury Crashes	PDO Crashes
	Number of Vehicles	% of Total	Number	% of Total	Number	Number
Passenger Car, SUV, Van	671	65.3	3	50.0	70	598
Motor Home	4	0.4	0	0.0	0	4
Pickup Truck	260	25.3	2	33.3	39	219
Small Truck Under 10,000 lbs. GVWR	8	0.8	0	0.0	1	7
Motorcycle	19	1.9	1	16.7	15	3
Moped/Goped	2	0.2	0	0.0	2	0
Go-Cart/Golf Cart	0	0.0	0	0.0	0	0
Snowmobile	3	0.3	0	0.0	0	3
Off-Road Vehicle (ORV)/All-Terrain Vehicle (ATV)	11	1.1	0	0.0	8	3
Other (non-registered farm equipment, construction equipment, snow plows, etc.)	2	0.2	0	0.0	1	1
Truck/Bus (over 10,000 lbs. GVWR/8+ occupants/hazmat placard)	39	3.8	0	0.0	3	36
Uncoded & Errors	8	0.8	0	0.0	0	8
<b>Total</b>	<b>1,027</b>	<b>100.0</b>	<b>6</b>	<b>100.0</b>	<b>139</b>	<b>882</b>

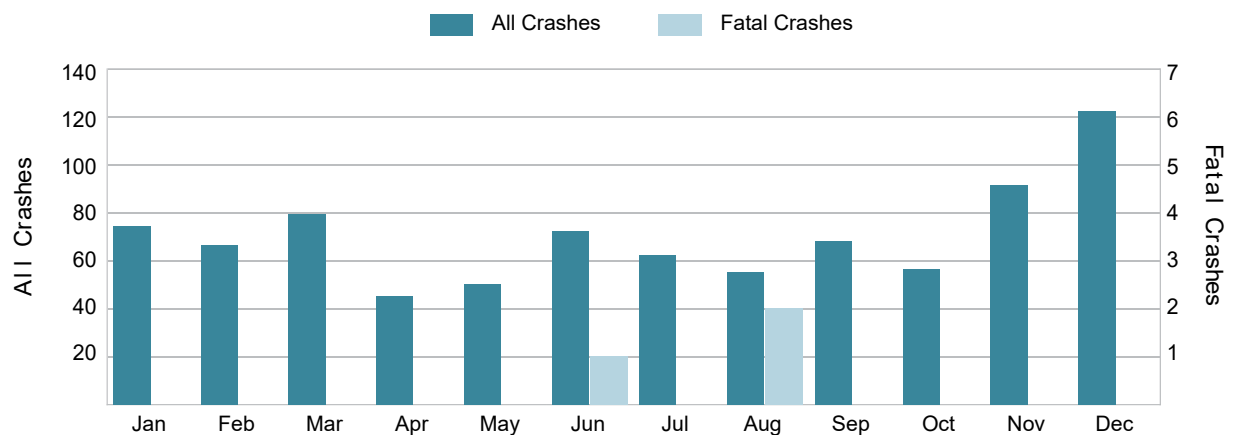
## 5-Year Trend - Crashes by Month

Month	2017		2018		2019		2020		2021	
	Total Crashes	Fatal Crashes	Total Crashes	Fatal Crashes	Total Crashes	Fatal Crashes	Total Crashes	Fatal Crashes	Total Crashes	Fatal Crashes
January	101	0	111	0	109	1	84	0	74	0
February	71	0	90	0	112	0	85	1	66	0
March	91	1	99	2	102	0	75	0	79	0
April	43	1	99	0	98	0	41	0	45	0
May	37	1	49	0	57	0	43	0	50	0
June	78	0	69	1	63	0	53	0	72	1
July	78	1	64	1	86	1	62	1	62	0
August	68	0	68	1	80	0	53	1	55	2
September	76	0	72	1	51	2	64	0	68	0
October	71	0	69	0	75	0	63	0	56	0
November	113	0	116	0	118	0	71	0	91	0
December	149	0	112	0	131	0	71	0	122	0
<b>Total</b>	<b>976</b>	<b>4</b>	<b>1,018</b>	<b>6</b>	<b>1,082</b>	<b>4</b>	<b>765</b>	<b>3</b>	<b>840</b>	<b>3</b>

## 5-Year Trend - Crashes by Day of Week

Day	2017		2018		2019		2020		2021	
	Total Crashes	Fatal Crashes	Total Crashes	Fatal Crashes	Total Crashes	Fatal Crashes	Total Crashes	Fatal Crashes	Total Crashes	Fatal Crashes
Monday	139	1	143	0	138	0	110	0	129	0
Tuesday	102	1	120	1	137	1	84	0	107	2
Wednesday	129	1	139	2	162	0	114	1	112	0
Thursday	129	0	136	1	161	1	119	0	120	0
Friday	170	1	174	0	162	1	114	0	135	0
Saturday	162	0	140	2	143	1	121	2	103	1
Sunday	145	0	166	0	179	0	103	0	134	0
<b>Total</b>	<b>976</b>	<b>4</b>	<b>1,018</b>	<b>6</b>	<b>1,082</b>	<b>4</b>	<b>765</b>	<b>3</b>	<b>840</b>	<b>3</b>

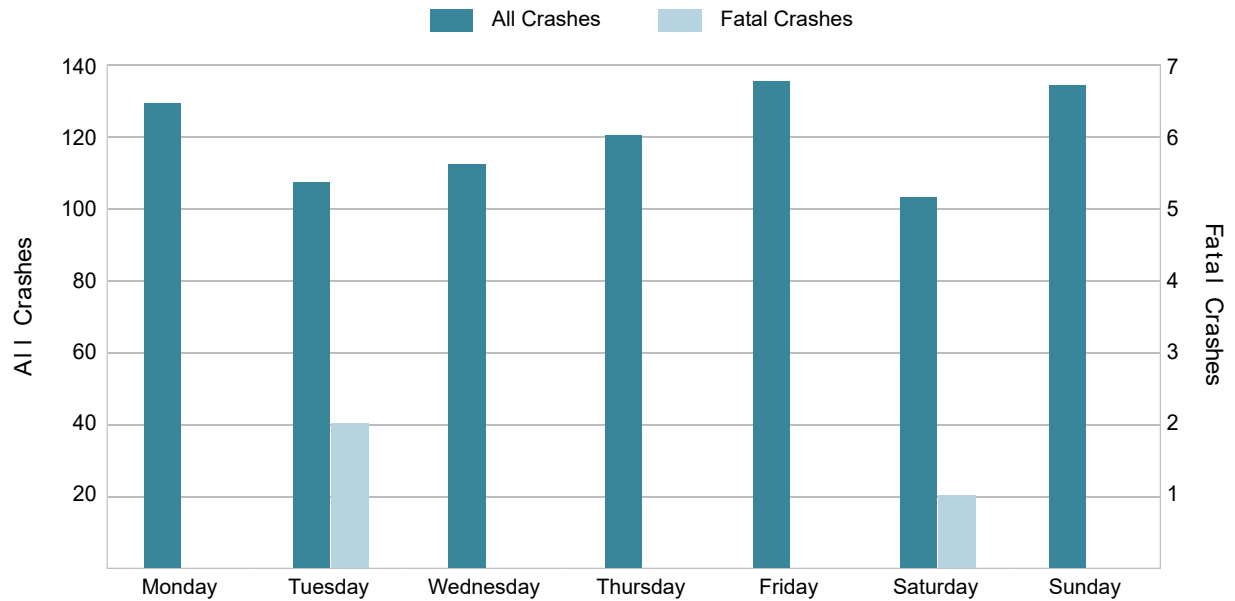
## 2021 Crashes by Month



2021 - Crashes by Day of Week

Day	All Crashes		Fatal Crashes		Injury Crashes			PDO Crashes
	Number	% of Total	Fatal	% of Fatal	A	B	C	Number
Monday	129	15.4	0	0.0	2	3	9	115
Tuesday	107	12.7	2	66.7	2	1	4	98
Wednesday	112	13.3	0	0.0	0	7	6	99
Thursday	120	14.3	0	0.0	2	2	9	107
Friday	135	16.1	0	0.0	9	5	7	114
Saturday	103	12.3	1	33.3	6	5	2	89
Sunday	134	16.0	0	0.0	3	4	7	120
<b>Total</b>	<b>840</b>	<b>100.0</b>	<b>3</b>	<b>100.0</b>	<b>24</b>	<b>27</b>	<b>44</b>	<b>742</b>

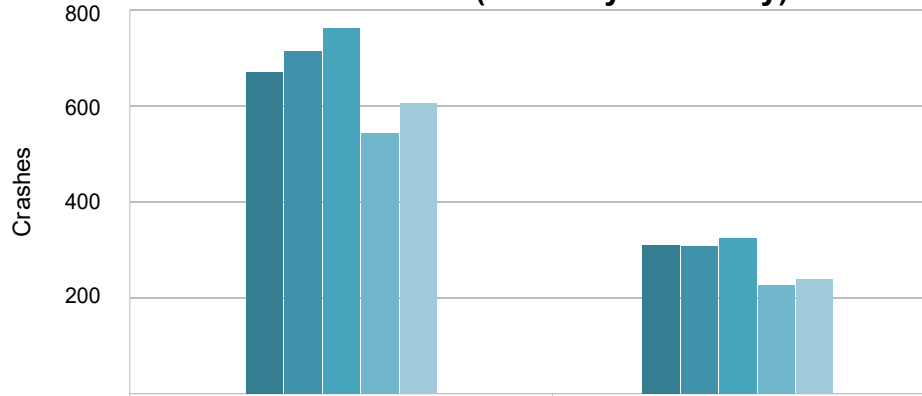
2021 Day of Week and Severity



## 5-Year Trend - Crashes by Weekday and Weekend

Portion of Week	2017		2018		2019		2020		2021	
	Total Crashes	Fatal Crashes	Total Crashes	Fatal Crashes	Total Crashes	Fatal Crashes	Total Crashes	Fatal Crashes	Total Crashes	Fatal Crashes
Weekday	669	4	712	4	760	3	541	1	603	2
Weekend	307	0	306	2	322	1	224	2	237	1
<b>Total</b>	<b>976</b>	<b>4</b>	<b>1,018</b>	<b>6</b>	<b>1,082</b>	<b>4</b>	<b>765</b>	<b>3</b>	<b>840</b>	<b>3</b>

## 5-Year Crash Trends by Weekday (Monday - Friday) and Weekend (Saturday &amp; Sunday)

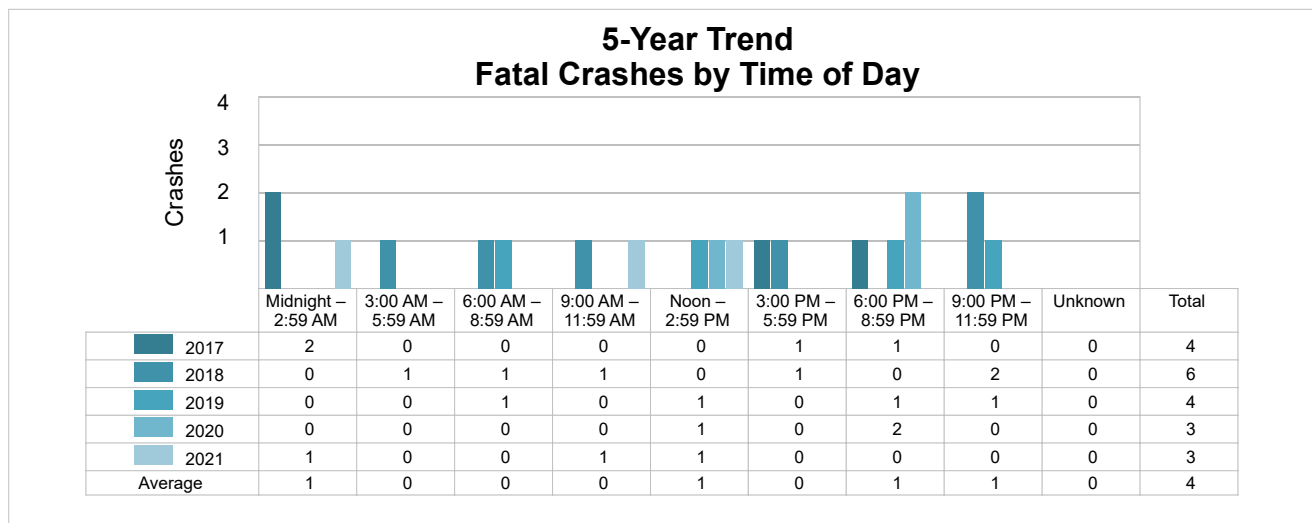
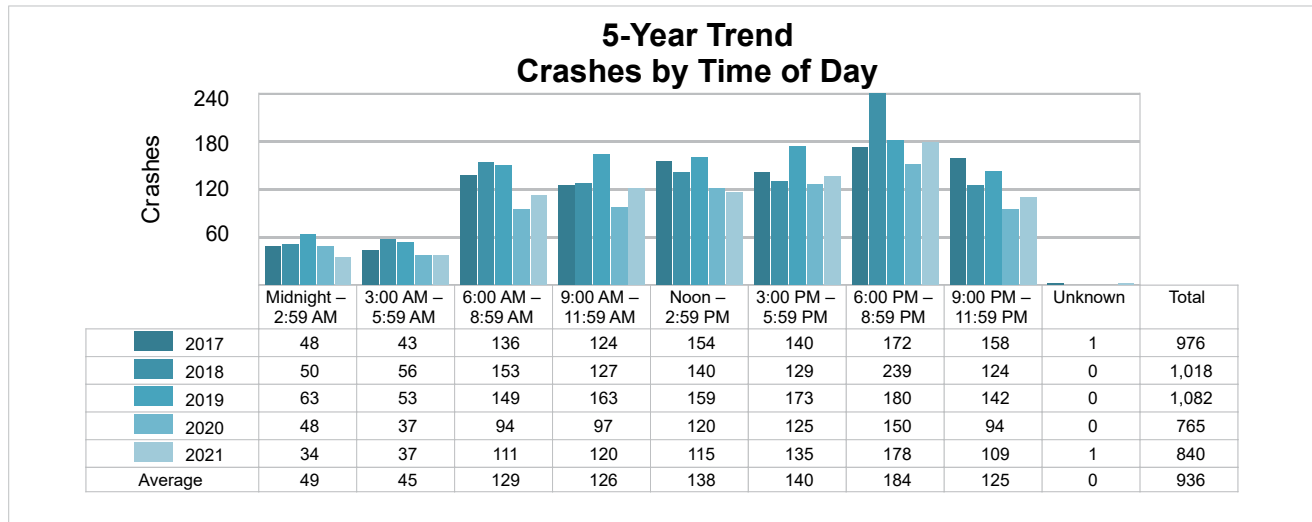


	Weekday	Weekend	Total
2017	669	307	976
2018	712	306	1,018
2019	760	322	1,082
2020	541	224	765
2021	603	237	840
Average	657	279	936

## 5-Year Trend - Crashes by Time of Day

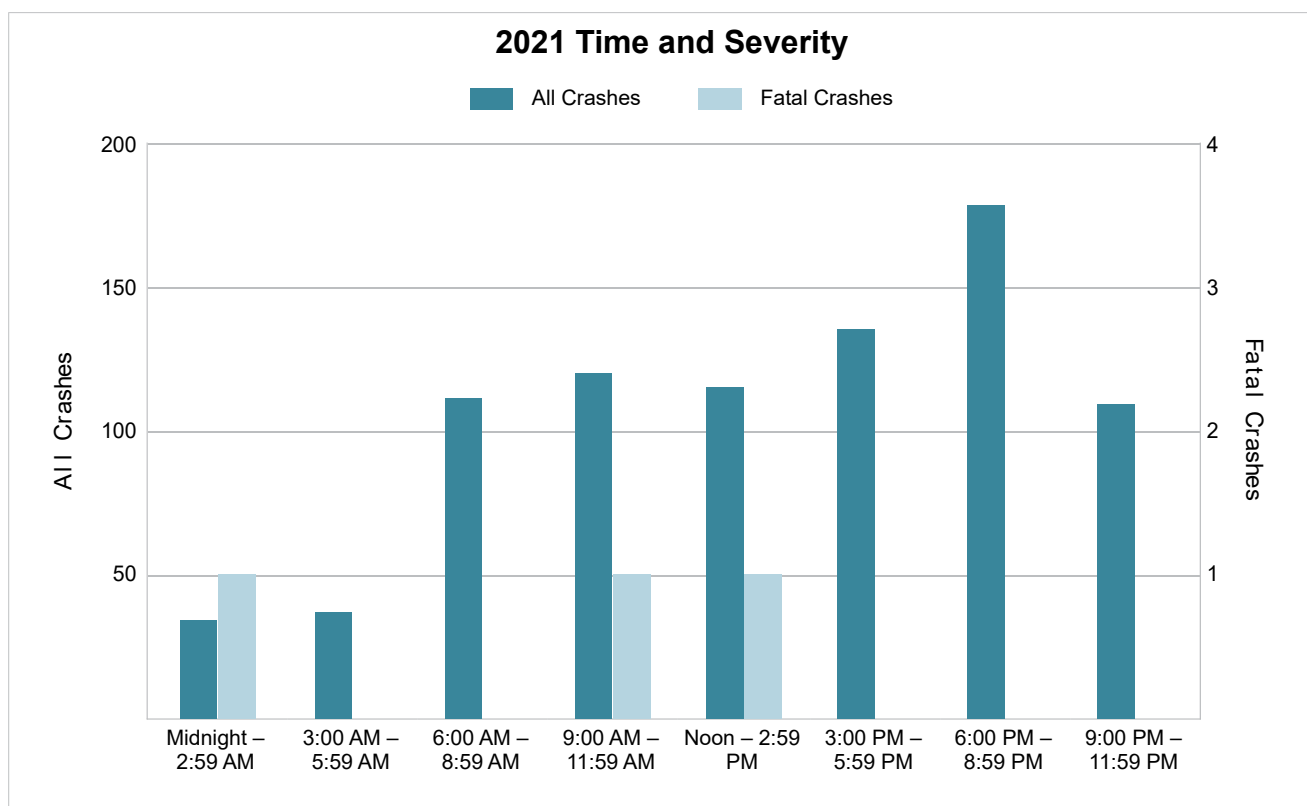
Time of Day	2017		2018		2019		2020		2021	
	Total Crashes	Fatal Crashes	Total Crashes	Fatal Crashes	Total Crashes	Fatal Crashes	Total Crashes	Fatal Crashes	Total Crashes	Fatal Crashes
Midnight – 2:59 AM	48	2	50	0	63	0	48	0	34	1
3:00 AM – 5:59 AM	43	0	56	1	53	0	37	0	37	0
6:00 AM – 8:59 AM	136	0	153	1	149	1	94	0	111	0
9:00 AM – 11:59 AM	124	0	127	1	163	0	97	0	120	1
Noon – 2:59 PM	154	0	140	0	159	1	120	1	115	1
3:00 PM – 5:59 PM	140	1	129	1	173	0	125	0	135	0
6:00 PM – 8:59 PM	172 †	1	239 †	0	180 †	1	150 †	2	178 †	0
9:00 PM – 11:59 PM	158	0	124	2	142	1	94	0	109	0
Unknown	1	0	0	0	0	0	0	0	1	0
<b>Total</b>	<b>976</b>	<b>4</b>	<b>1,018</b>	<b>6</b>	<b>1,082</b>	<b>4</b>	<b>765</b>	<b>3</b>	<b>840</b>	<b>3</b>

Note: † Indicates that the highest number of total crashes reported in the 5-year period occurred in the same time period.



## 2021 - Time and Severity

Time of Day	All Crashes		Fatal Crashes		Injury Crashes			PDO Crashes
	Number	% of Total	Number	% of Fatal	A	B	C	Number
Midnight – 2:59 AM	34	4.0	1	33.3	1	1	0	31
3:00 AM – 5:59 AM	37	4.4	0	0.0	0	0	4	33
6:00 AM – 8:59 AM	111	13.2	0	0.0	0	4	4	103
9:00 AM – 11:59 AM	120	14.3	1	33.3	7	2	9	101
Noon – 2:59 PM	115	13.7	1	33.3	4	6	10	94
3:00 PM – 5:59 PM	135	16.1	0	0.0	6	4	9	116
6:00 PM – 8:59 PM	178	21.2	0	0.0	5	6	7	160
9:00 PM – 11:59 PM	109	13.0	0	0.0	1	4	1	103
Unknown	1	0.1	0	0.0	0	0	0	1
<b>Total</b>	<b>840</b>	<b>100.0</b>	<b>3</b>	<b>100.0</b>	<b>24</b>	<b>27</b>	<b>44</b>	<b>742</b>

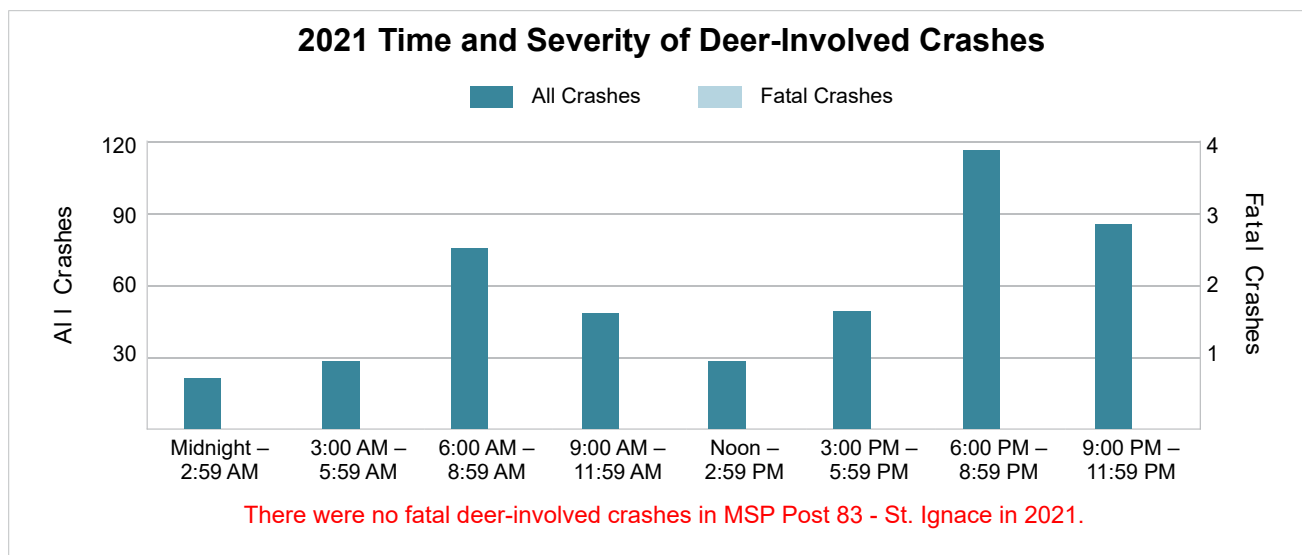
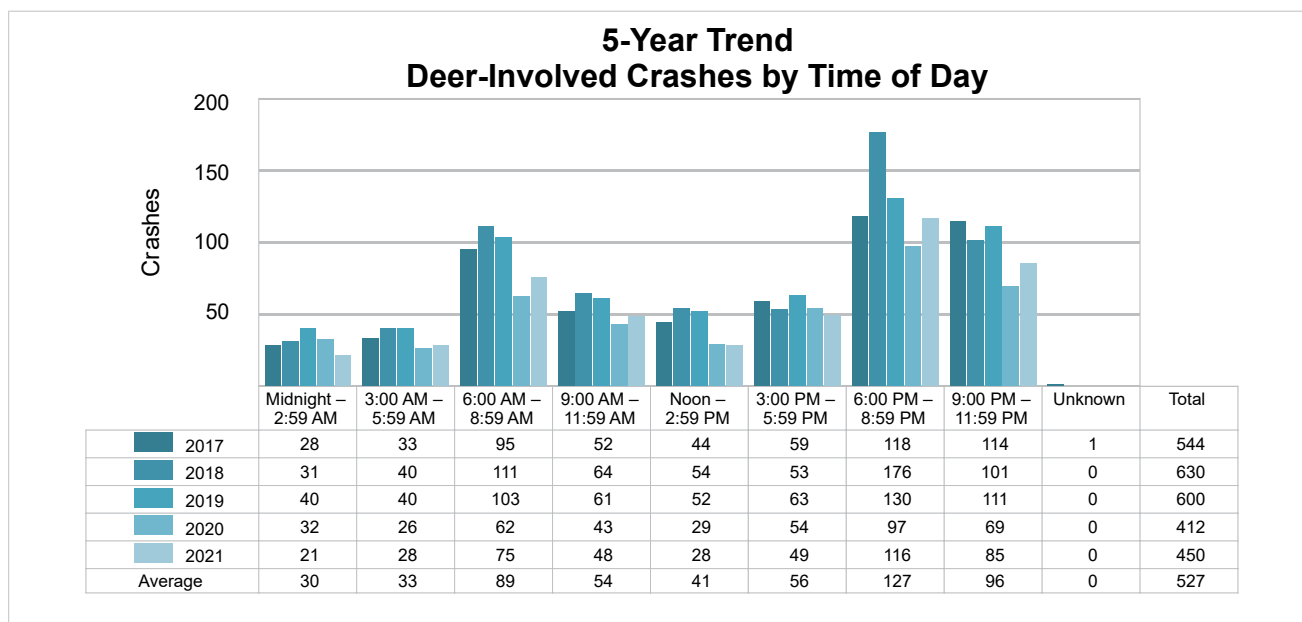




## 5-Year Trend - Deer-Involved Crashes by Time of Day

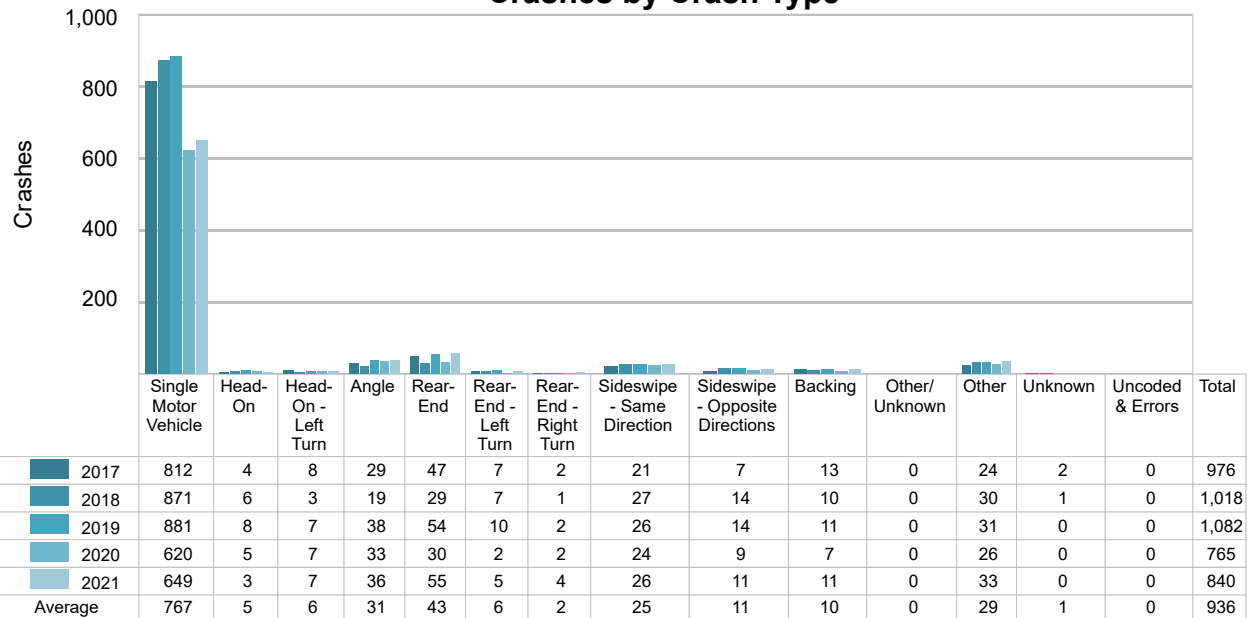
Time of Day	2017		2018		2019		2020		2021	
	Total Crashes	Fatal Crashes	Total Crashes	Fatal Crashes	Total Crashes	Fatal Crashes	Total Crashes	Fatal Crashes	Total Crashes	Fatal Crashes
Midnight – 2:59 AM	28	0	31	0	40	0	32	0	21	0
3:00 AM – 5:59 AM	33	0	40	0	40	0	26	0	28	0
6:00 AM – 8:59 AM	95	0	111	0	103	0	62	0	75	0
9:00 AM – 11:59 AM	52	0	64	1	61	0	43	0	48	0
Noon – 2:59 PM	44	0	54	0	52	0	29	0	28	0
3:00 PM – 5:59 PM	59	0	53	0	63	0	54	0	49	0
6:00 PM – 8:59 PM	118 †	0	176 †	0	130 †	0	97 †	0	116 †	0
9:00 PM – 11:59 PM	114	0	101	0	111	0	69	0	85	0
Unknown	1	0	0	0	0	0	0	0	0	0
<b>Total</b>	<b>544</b>	<b>0</b>	<b>630</b>	<b>1</b>	<b>600</b>	<b>0</b>	<b>412</b>	<b>0</b>	<b>450</b>	<b>0</b>

Note: † Indicates that the highest number of total crashes reported in the 5-year period occurred in the same time period.



## 5-Year Trend - Crashes by Crash Type

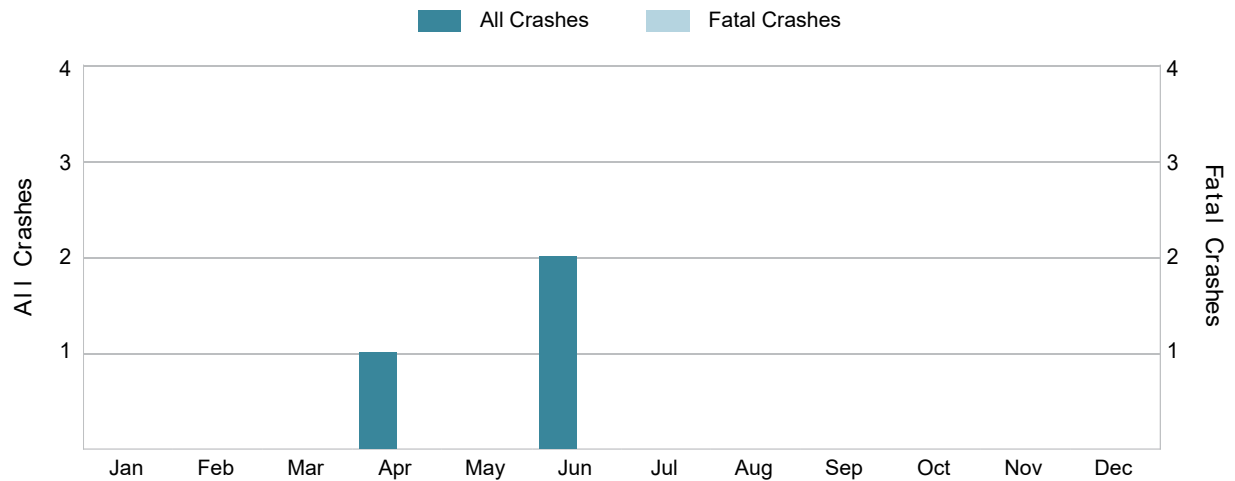
Crash Type	2017		2018		2019		2020		2021	
	Total Crashes	Fatal Crashes	Total Crashes	Fatal Crashes	Total Crashes	Fatal Crashes	Total Crashes	Fatal Crashes	Total Crashes	Fatal Crashes
Single Motor Vehicle	812	1	871	4	881	3	620	2	649	1
Head-On	4	1	6	1	8	0	5	1	3	0
Head-On - Left Turn	8	0	3	0	7	0	7	0	7	0
Angle	29	0	19	1	38	1	33	0	36	1
Rear-End	47	0	29	0	54	0	30	0	55	1
Rear-End - Left Turn	7	0	7	0	10	0	2	0	5	0
Rear-End - Right Turn	2	0	1	0	2	0	2	0	4	0
Sideswipe - Same Direction	21	0	27	0	26	0	24	0	26	0
Sideswipe - Opposite Directions	7	0	14	0	14	0	9	0	11	0
Backing	13	0	10	0	11	0	7	0	11	0
Other/Unknown	0	0	0	0	0	0	0	0	0	0
Other	24	2	30	0	31	0	26	0	33	0
Unknown	2	0	1	0	0	0	0	0	0	0
Uncoded & Errors	0	0	0	0	0	0	0	0	0	0
<b>Total</b>	<b>976</b>	<b>4</b>	<b>1,018</b>	<b>6</b>	<b>1,082</b>	<b>4</b>	<b>765</b>	<b>3</b>	<b>840</b>	<b>3</b>

5-Year Trend  
Crashes by Crash Type

5-Year Trend - Pedestrian-Involved Crashes by Month

Month	2017		2018		2019		2020		2021	
	Total Crashes	Fatal Crashes	Total Crashes	Fatal Crashes	Total Crashes	Fatal Crashes	Total Crashes	Fatal Crashes	Total Crashes	Fatal Crashes
January	0	0	0	0	0	0	0	0	0	0
February	0	0	1	0	1	0	0	0	0	0
March	0	0	0	0	0	0	0	0	0	0
April	0	0	0	0	0	0	0	0	1	0
May	0	0	0	0	0	0	0	0	0	0
June	0	0	0	0	0	0	1	0	2	0
July	0	0	0	0	0	0	1	0	0	0
August	0	0	0	0	1	0	0	0	0	0
September	0	0	0	0	0	0	0	0	0	0
October	0	0	0	0	0	0	0	0	0	0
November	0	0	0	0	0	0	1	0	0	0
December	1	0	0	0	0	0	0	0	0	0
<b>Total</b>	<b>1</b>	<b>0</b>	<b>1</b>	<b>0</b>	<b>2</b>	<b>0</b>	<b>3</b>	<b>0</b>	<b>3</b>	<b>0</b>

2021 Pedestrian-Involved Crashes by Month

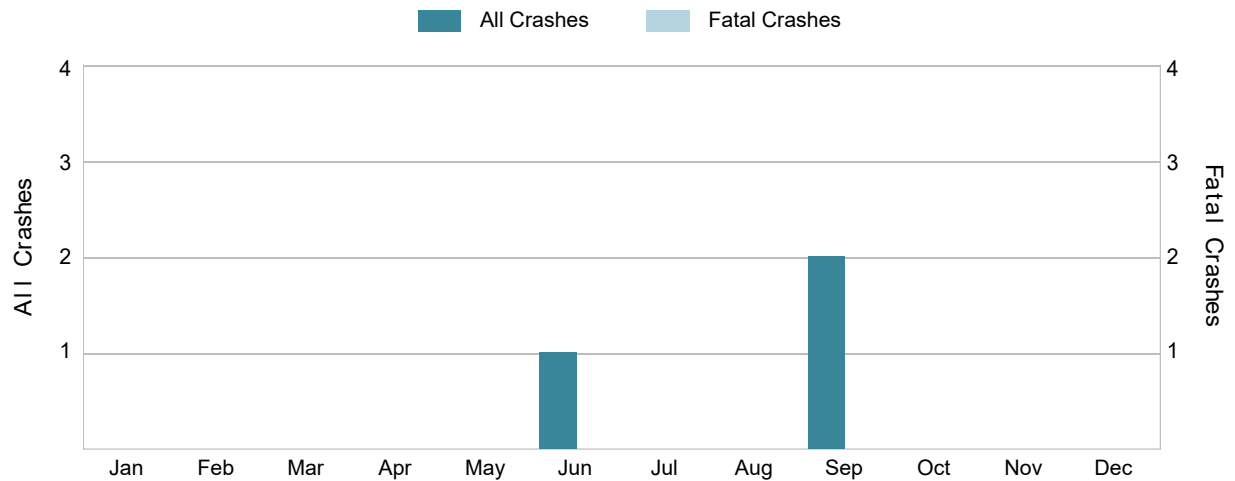


There were no fatal pedestrian-involved crashes in MSP Post 83 - St. Ignace in 2021.

## 5-Year Trend - Bicyclist-Involved Crashes by Month

Month	2017		2018		2019		2020		2021	
	Total Crashes	Fatal Crashes	Total Crashes	Fatal Crashes	Total Crashes	Fatal Crashes	Total Crashes	Fatal Crashes	Total Crashes	Fatal Crashes
January	0	0	0	0	0	0	0	0	0	0
February	0	0	0	0	0	0	0	0	0	0
March	0	0	0	0	0	0	0	0	0	0
April	0	0	0	0	0	0	0	0	0	0
May	0	0	0	0	0	0	0	0	0	0
June	0	0	0	0	0	0	1	0	1	0
July	1	0	1	0	0	0	0	0	0	0
August	0	0	0	0	1	0	0	0	0	0
September	0	0	1	0	0	0	0	0	2	0
October	1	0	0	0	0	0	0	0	0	0
November	0	0	0	0	0	0	0	0	0	0
December	0	0	0	0	0	0	0	0	0	0
<b>Total</b>	<b>2</b>	<b>0</b>	<b>2</b>	<b>0</b>	<b>1</b>	<b>0</b>	<b>1</b>	<b>0</b>	<b>3</b>	<b>0</b>

## 2021 Bicyclist-Involved Crashes by Month



There were no fatal bicyclist-involved crashes in MSP Post 83 - St. Ignace in 2021.

## 2021 - Reported Motor Vehicle Crashes by County

County	Crashes												
	Total	Fatal	Injury	Property Damage	Inter-State	US Route	State Route	Local Street	Alcohol-Involved	Drug-Involved	Deer-Involved	Pedestrian-Involved	Bicyclist-Involved
Mackinac	496	1	56	439	95	131	123	141	16	9	268	0	2
Schoolcraft	344	2	39	303	0	145	109	85	12	4	182	3	1
<b>Total</b>	<b>840</b>	<b>3</b>	<b>95</b>	<b>742</b>	<b>95</b>	<b>276</b>	<b>232</b>	<b>226</b>	<b>28</b>	<b>13</b>	<b>450</b>	<b>3</b>	<b>3</b>

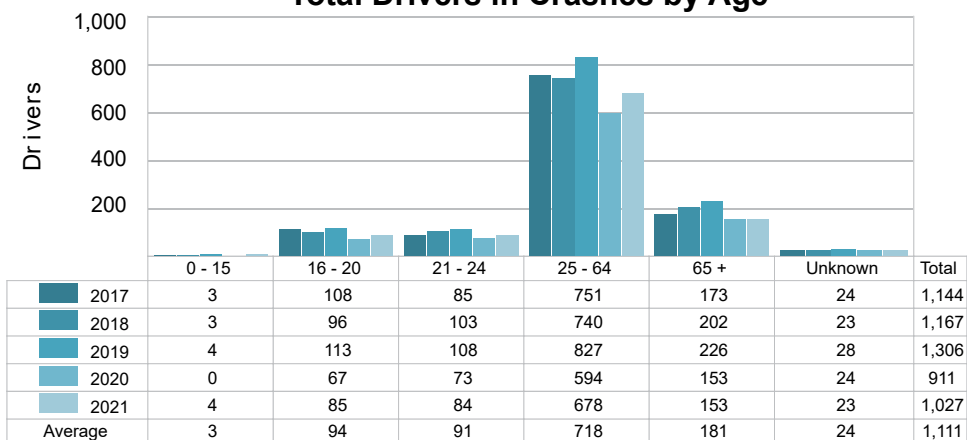
## 2021 - People in Reported Motor Vehicle Crashes by County

County	People					
	Fatalities	Suspected Serious Injuries	Suspected Minor Injuries	Possible Injuries	No Injuries	Uncoded & Errors
Mackinac	1	28	38	51	619	13
Schoolcraft	2	33	15	43	434	9
<b>Total</b>	<b>3</b>	<b>61</b>	<b>53</b>	<b>94</b>	<b>1,053</b>	<b>22</b>

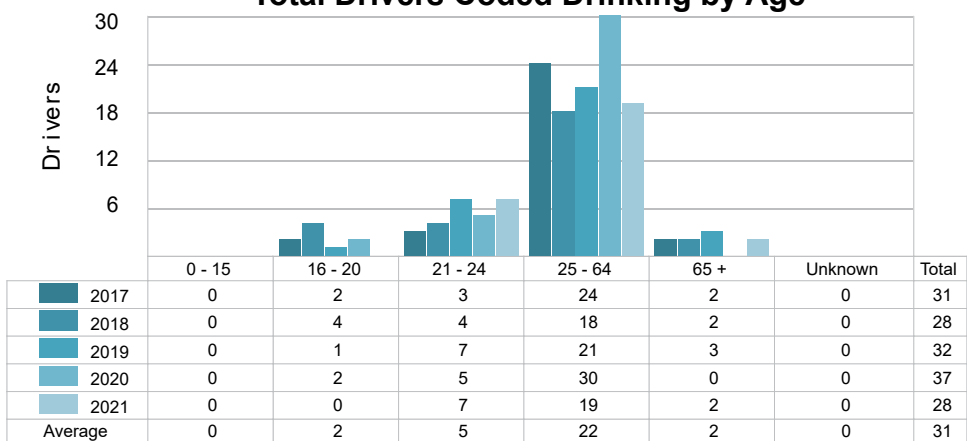
## 5-Year Trend - Drivers in Crashes Coded Drinking by Driver Age

Driver Age	2017		2018		2019		2020		2021	
	Total Drivers in Crashes	Total Drivers Coded Drinking	Total Drivers in Crashes	Total Drivers Coded Drinking	Total Drivers in Crashes	Total Drivers Coded Drinking	Total Drivers in Crashes	Total Drivers Coded Drinking	Total Drivers in Crashes	Total Drivers Coded Drinking
0 - 15	3	0	3	0	4	0	0	0	4	0
16 - 20	108	2	96	4	113	1	67	2	85	0
21 - 24	85	3	103	4	108	7	73	5	84	7
25 - 64	751	24	740	18	827	21	594	30	678	19
65 +	173	2	202	2	226	3	153	0	153	2
Unknown	24	0	23	0	28	0	24	0	23	0
<b>Total</b>	<b>1,144</b>	<b>31</b>	<b>1,167</b>	<b>28</b>	<b>1,306</b>	<b>32</b>	<b>911</b>	<b>37</b>	<b>1,027</b>	<b>28</b>

### 5-Year Trend Total Drivers in Crashes by Age



### 5-Year Trend Total Drivers Coded Drinking by Age



### 2021 - Bodily Alcohol Concentration (BAC) Results Among All Vehicle Drivers in Alcohol-Involved Crashes by Age

Age Group	Drivers				BAC Result Range for Drivers Coded Drinking				
	Total Drivers in Alcohol-Involved Crashes	Total Drivers Tested in all Crashes	Total Drivers Coded Drinking, Tested	Total Drivers Coded Drinking	BAC = 0.00	BAC 0.01 g/dL to 0.07 g/dL	BAC 0.08 g/dL to 0.16 g/dL	BAC 0.17 g/dL and Above	BAC Not Reported
0 - 15	0	0	0	0	0	0	0	0	0
16 - 20	1	0	0	0	0	0	0	0	0
21 - 24	7	5	5	7	0	0	5	1	1
25 - 64	25	29	15	19	0	2	7	4	6
65 +	2	8	1	2	0	1	0	0	1
Unknown	1	0	0	0	0	0	0	0	0
<b>Total</b>	<b>36</b>	<b>42</b>	<b>21</b>	<b>28</b>	<b>0</b>	<b>3</b>	<b>12</b>	<b>5</b>	<b>8</b>

Notes: BAC measured in grams (g) per deciliter (dL).

BAC may not be reported if drivers are not tested or if the results are not available immediately (as in the case of a blood test).

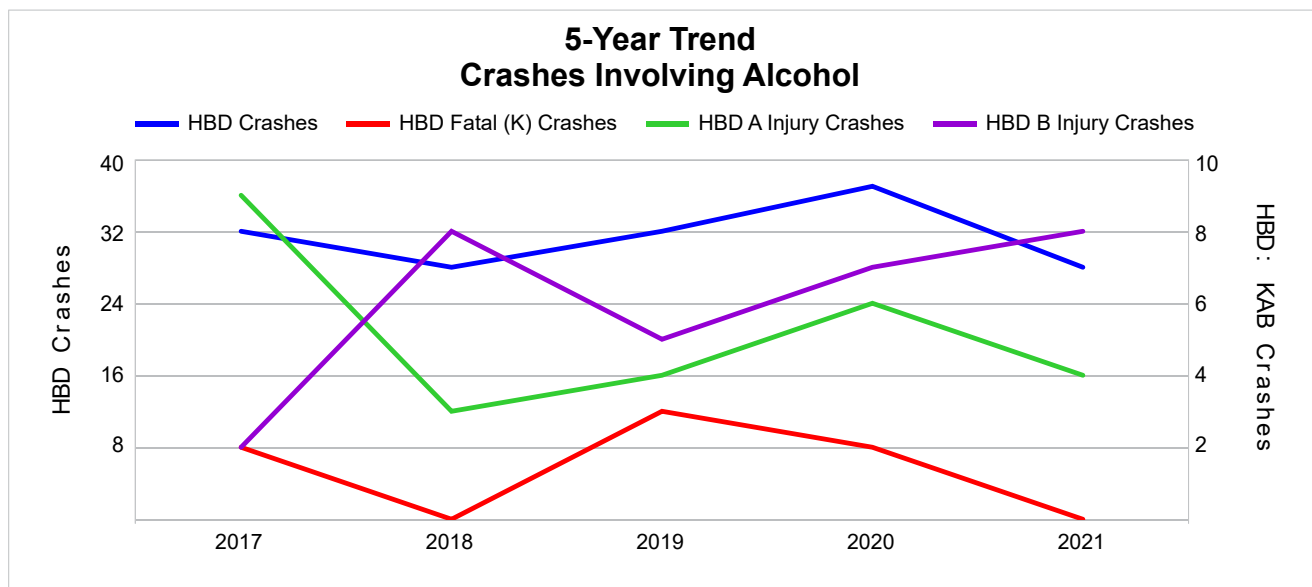
A driver may be coded by the officer as drinking even though no test is administered.

### 5-Year Trend - Crashes Involving Alcohol

Year	All Crashes	HBD Crashes	% HBD	Fatal Crashes	HBD Fatal Crashes	% HBD	A Injury Crashes	HBD A Injury Crashes	% HBD	B Injury Crashes	HBD B Injury Crashes	% HBD
2017	976	32	3.3	4	2	50.0	22	9	40.9	28	2	7.1
2018	1,018	28	2.8	6	0	0.0	16	3	18.8	36	8	22.2
2019	1,082	32	3.0	4	3	75.0	19	4	21.1	30	5	16.7
2020	765	37	4.8	3	2	66.7	17	6	35.3	31	7	22.6
2021	840	28	3.3	3	0	0.0	24 **	4	16.7 *	27 *	8	29.6 **

Note: \* Indicates that the most recent year is the lowest number or percentage reported in the 5-year period in that column.

\*\* Indicates that the most recent year is the highest number or percentage reported in the 5-year period in that column.



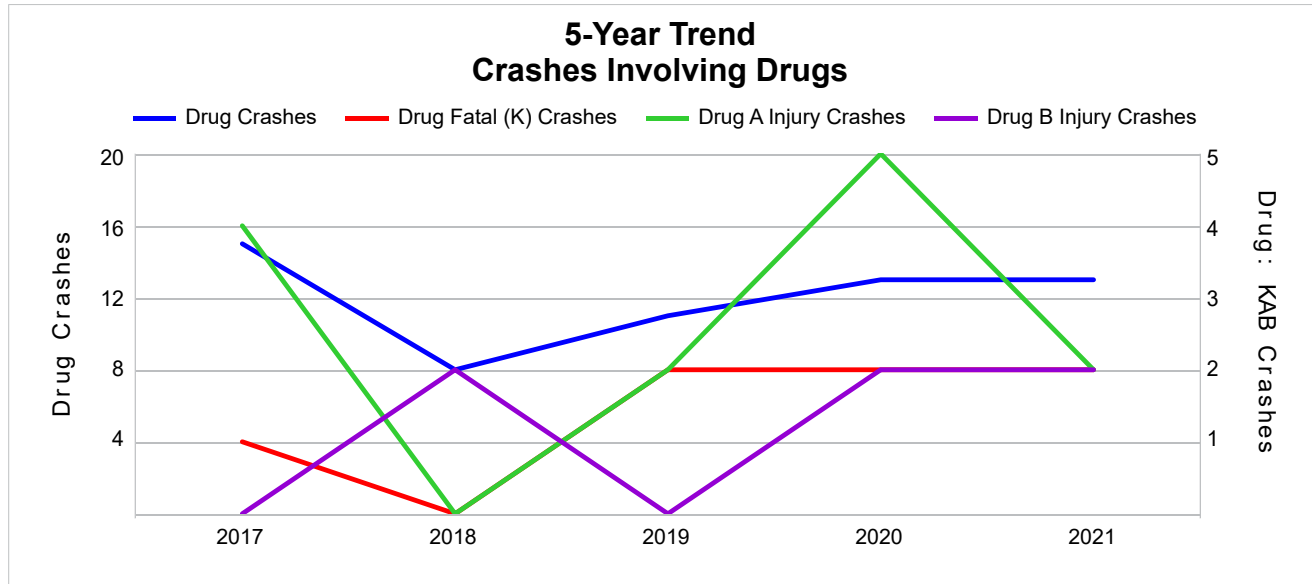
Note: Had-Been-Drinking (HBD)

## 5-Year Trend - Crashes Involving Drugs

Year	All Crashes	Drug Crashes	% Drug	Fatal Crashes	Drug Fatal Crashes	% Drug	A Injury Crashes	Drug A Injury Crashes	% Drug	B Injury Crashes	Drug B Injury Crashes	% Drug
2017	976	15	1.5	4	1	25.0	22	4	18.2	28	0	0.0
2018	1,018	8	0.8	6	0	0.0	16	0	0.0	36	2	5.6
2019	1,082	11	1.0	4	2	50.0	19	2	10.5	30	0	0.0
2020	765	13	1.7	3	2	66.7	17	5	29.4	31	2	6.5
2021	840	13	1.5	3	2	66.7	24 **	2	8.3	27 *	2	7.4 **

Note: \* Indicates that the most recent year is the lowest number or percentage reported in the 5-year period in that column.

\*\* Indicates that the most recent year is the highest number or percentage reported in the 5-year period in that column.



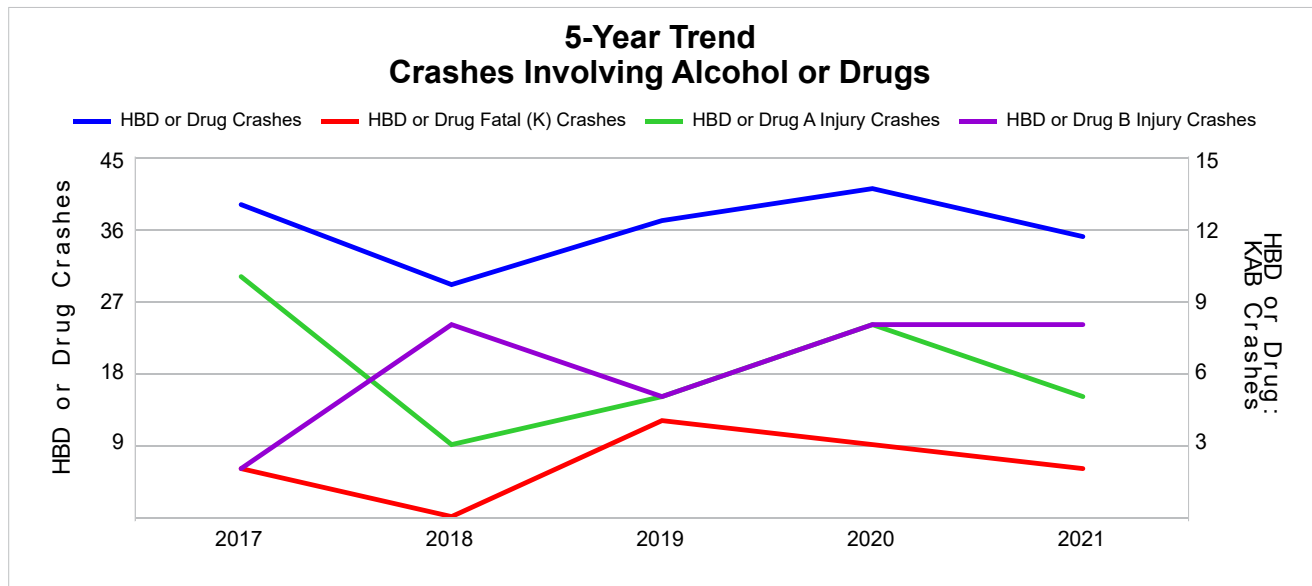


### 5-Year Trend - Crashes Involving Alcohol or Drugs

Year	All Crashes	HBD or Drug Crashes	% HBD or Drug	Fatal Crashes	HBD or Drug Fatal Crashes	% HBD or Drug	A Injury Crashes	HBD or Drug A Injury Crashes	% HBD or Drug	B Injury Crashes	HBD or Drug B Injury Crashes	% HBD or Drug
2017	976	39	4.0	4	2	50.0	22	10	45.5	28	2	7.1
2018	1,018	29	2.8	6	0	0.0	16	3	18.8	36	8	22.2
2019	1,082	37	3.4	4	4	100.0	19	5	26.3	30	5	16.7
2020	765	41	5.4	3	3	100.0	17	8	47.1	31	8	25.8
2021	840	35	4.2	3	2	66.7	24 **	5	20.8	27 *	8	29.6 **

Note: \* Indicates that the most recent year is the lowest number or percentage reported in the 5-year period in that column.

\*\* Indicates that the most recent year is the highest number or percentage reported in the 5-year period in that column.



Note: Had-Been-Drinking (HBD)

## 2021 - Restraints Worn Among Vehicle Drivers and Injured Passengers by Vehicle Type

Vehicle Type	Total Occupants			Fatalities			A - Suspected Serious			B - Suspected Minor			C - Possible Injury			No Injury		
	Total	Used Restraint	%	Total	Used Restraint	%	Total	Used Restraint	%	Total	Used Restraint	%	Total	Used Restraint	%	Total	Used Restraint	%
Passenger Car, SUV, Van	695	665	95.7	1	0	0.0	8	5	62.5	14	13	92.9	44	43	97.7	620	604	97.4
Motor Home	4	4	100.0	0	0	0.0	0	0	0.0	0	0	0.0	0	0	0.0	4	4	100.0
Pickup Truck	270	253	93.7	1	1	100.0	2	2	100.0	13	10	76.9	14	12	85.7	237	228	96.2
Small Truck Under 10,000 lbs. GVWR	8	7	87.5	0	0	0.0	0	0	0.0	0	0	0.0	0	0	0.0	7	7	100.0
Motorcycle	22	15	68.2	1	0	0.0	9	6	66.7	6	4	66.7	1	1	100.0	5	4	80.0
Moped/Goped	2	1	50.0	0	0	0.0	2	1	50.0	0	0	0.0	0	0	0.0	0	0	0.0
Go-Cart/Golf Cart	0	0	0.0	0	0	0.0	0	0	0.0	0	0	0.0	0	0	0.0	0	0	0.0
Snowmobile	3	3	100.0	0	0	0.0	0	0	0.0	0	0	0.0	0	0	0.0	3	3	100.0
Off-Road Vehicle (ORV)/All-Terrain Vehicle (ATV)	13	10	76.9	0	0	0.0	1	1	100.0	1	1	100.0	6	5	83.3	4	3	75.0
Other (non-registered farm equipment, construction equipment, snow plows, etc.)	2	0	0.0	0	0	0.0	1	0	0.0	0	0	0.0	0	0	0.0	1	0	0.0
Truck/Bus (over 10,000 lbs. GVWR/ 8+ occupants/ hazmat placard)	41	39	95.1	0	0	0.0	0	0	0.0	3	3	100.0	0	0	0.0	37	36	97.3
Uncoded & Errors	8	0	0.0	0	0	0.0	0	0	0.0	0	0	0.0	0	0	0.0	0	0	0.0
<b>Total</b>	<b>1,068</b>	<b>997</b>	<b>93.4</b>	<b>3</b>	<b>1</b>	<b>33.3</b>	<b>23</b>	<b>15</b>	<b>65.2</b>	<b>37</b>	<b>31</b>	<b>83.8</b>	<b>65</b>	<b>61</b>	<b>93.8</b>	<b>918</b>	<b>889</b>	<b>96.8</b>

Note: Restraint Use includes shoulder belt only used, lap belt only used, both lap and shoulder belts used, child restraint used, restraint failure, and helmet worn.

## 2021 - Restraints Worn Among Vehicle Drivers and Injured Passengers by Age

Age Group	Total Occupants			Fatalities			A - Suspected Serious			B - Suspected Minor			C - Possible Injury			No Injury		
	Total	Used Restraint	%	Total	Used Restraint	%	Total	Used Restraint	%	Total	Used Restraint	%	Total	Used Restraint	%	Total	Used Restraint	%
0 - 15	13	12	92.3	0	0	0.0	0	0	0.0	3	3	100.0	7	6	85.7	3	3	100.0
16 - 20	91	90	98.9	0	0	0.0	2	2	100.0	3	3	100.0	11	11	100.0	75	74	98.7
21 - 24	88	83	94.3	0	0	0.0	1	0	0.0	7	6	85.7	4	3	75.0	76	74	97.4
25 - 64	697	663	95.1	3	1	33.3	14	9	64.3	19	14	73.7	35	34	97.1	626	605	96.6
65 +	156	149	95.5	0	0	0.0	6	4	66.7	5	5	100.0	8	7	87.5	137	133	97.1
Unknown	23	0	0.0	0	0	0.0	0	0	0.0	0	0	0.0	0	0	0.0	1	0	0.0
<b>Total</b>	<b>1,068</b>	<b>997</b>	<b>93.4</b>	<b>3</b>	<b>1</b>	<b>33.3</b>	<b>23</b>	<b>15</b>	<b>65.2</b>	<b>37</b>	<b>31</b>	<b>83.8</b>	<b>65</b>	<b>61</b>	<b>93.8</b>	<b>918</b>	<b>889</b>	<b>96.8</b>

Note: Restraint Use includes shoulder belt only used, lap belt only used, both lap and shoulder belts used, child restraint used, restraint failure, and helmet worn.

## 5-Year Trend - Restraint Use Among Drivers

Restraint Use	2017			2018			2019			2020			2021		
	Drivers	Fatal Drivers	Injured Drivers	Drivers	Fatal Drivers	Injured Drivers	Drivers	Fatal Drivers	Injured Drivers	Drivers	Fatal Drivers	Injured Drivers	Drivers	Fatal Drivers	Injured Drivers
No Belts Available	4	0	2	5	0	0	1	0	0	1	0	0	3	0	1
Shoulder Belt Only Used	12	0	1	5	0	1	10	0	0	2	0	0	2	0	1
Lap Belt Only Used	0	0	0	1	0	0	5	0	0	5	0	0	4	0	0
Both Lap & Shoulder Belt Used	1,037	1	67	1,051	2	55	1,183	1	66	826	0	51	932	1	55
No Belts Used	11	1	8	10	1	4	13	1	4	12	1	6	9	1	6
Child Restraint Used - Forward Facing	0	0	0	1	0	1	0	0	0	0	0	0	0	0	0
Child Restraint Not Used, Unavailable or Improper Use	0	0	0	0	0	0	0	0	0	0	0	0	0	0	0
Child Restraint Used - Rear Facing	0	0	0	0	0	0	0	0	0	0	0	0	0	0	0
Child Restraint Used - Booster Seat	0	0	0	0	0	0	0	0	0	0	0	0	0	0	0
Restraint Failure	1	0	0	0	0	0	1	0	0	1	0	1	2	0	1
Restraint Use Unknown	51	0	8	67	0	4	62	1	2	45	0	6	41	0	0
Helmet Worn	12	0	7	14	2	9	22	0	16	14	1	8	21	0	14
Helmet Not Worn	5	0	3	4	0	2	4	1	2	3	1	1	7	1	5
Helmet Use Unknown	2	0	1	0	0	0	0	0	0	1	0	1	1	0	1
Uncoded & Errors	9	0	0	9	0	0	5	0	0	1	0	0	5	0	0
<b>Total</b>	<b>1,144</b>	<b>2</b>	<b>97</b>	<b>1,167</b>	<b>5</b>	<b>76</b>	<b>1,306</b>	<b>4</b>	<b>90</b>	<b>911</b>	<b>3</b>	<b>74</b>	<b>1,027</b>	<b>3</b>	<b>84</b>

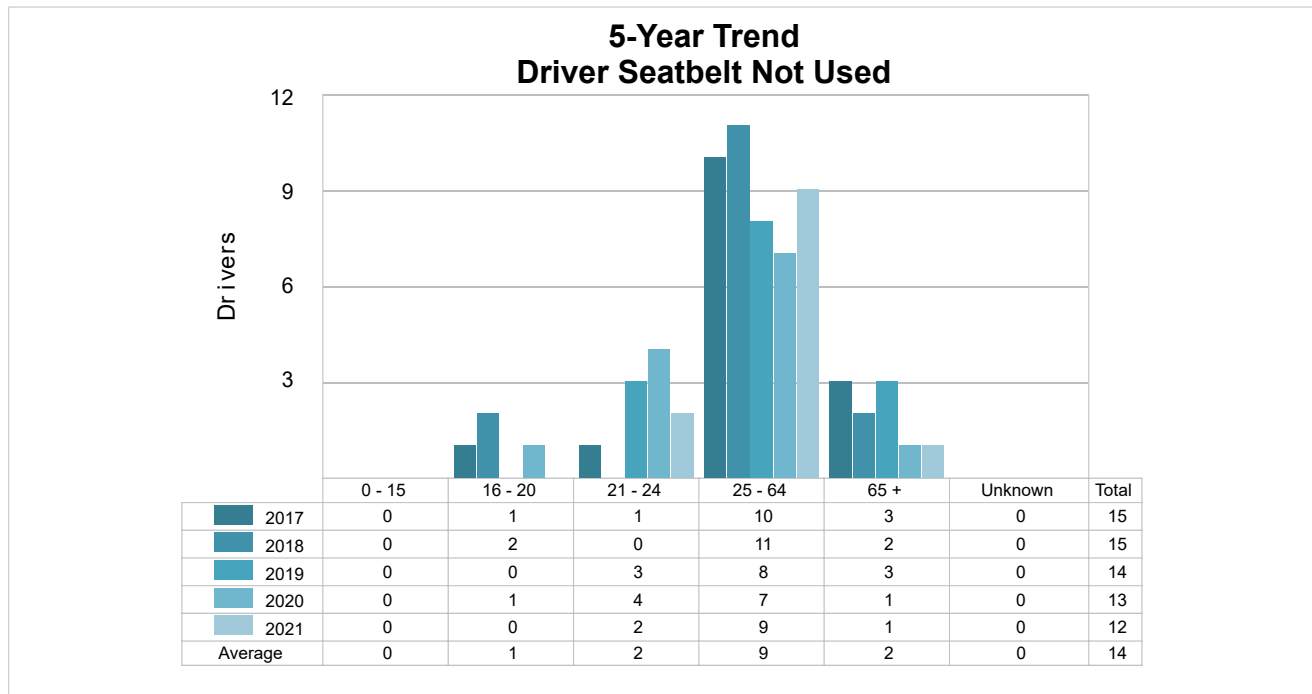
## 5-Year Trend - Restraint Use Among Drivers Coded Drinking

Restraint Use	2017			2018			2019			2020			2021		
	Drivers	Fatal Drivers	Injured Drivers	Drivers	Fatal Drivers	Injured Drivers	Drivers	Fatal Drivers	Injured Drivers	Drivers	Fatal Drivers	Injured Drivers	Drivers	Fatal Drivers	Injured Drivers
No Belts Available	0	0	0	0	0	0	0	0	0	0	0	0	0	0	0
Shoulder Belt Only Used	0	0	0	0	0	0	0	0	0	0	0	0	0	0	0
Lap Belt Only Used	0	0	0	1	0	0	0	0	0	0	0	0	1	0	0
Both Lap & Shoulder Belt Used	17	0	5	14	0	5	15	0	4	23	0	4	17	0	5
No Belts Used	4	1	3	3	0	2	4	1	2	4	1	2	4	0	4
Child Restraint Used - Forward Facing	0	0	0	0	0	0	0	0	0	0	0	0	0	0	0
Child Restraint Not Used, Unavailable or Improper Use	0	0	0	0	0	0	0	0	0	0	0	0	0	0	0
Child Restraint Used - Rear Facing	0	0	0	0	0	0	0	0	0	0	0	0	0	0	0
Child Restraint Used - Booster Seat	0	0	0	0	0	0	0	0	0	0	0	0	0	0	0
Restraint Failure	0	0	0	0	0	0	0	0	0	0	0	0	0	0	0
Restraint Use Unknown	7	0	3	9	0	3	10	1	2	6	0	4	4	0	0
Helmet Worn	2	0	1	0	0	0	2	0	2	2	1	1	1	0	1
Helmet Not Worn	1	0	1	1	0	1	1	1	0	1	0	0	1	0	1
Helmet Use Unknown	0	0	0	0	0	0	0	0	0	1	0	1	0	0	0
Uncoded & Errors	0	0	0	0	0	0	0	0	0	0	0	0	0	0	0
<b>Total</b>	<b>31</b>	<b>1</b>	<b>13</b>	<b>28</b>	<b>0</b>	<b>11</b>	<b>32</b>	<b>3</b>	<b>10</b>	<b>37</b>	<b>2</b>	<b>12</b>	<b>28</b>	<b>0</b>	<b>11</b>

## 5-Year Trend - Seatbelt Not Used Among Drivers by Age

Age Group	2017			2018			2019			2020			2021		
	Drivers	Fatal Drivers	Injured Drivers	Drivers	Fatal Drivers	Injured Drivers	Drivers	Fatal Drivers	Injured Drivers	Drivers	Fatal Drivers	Injured Drivers	Drivers	Fatal Drivers	Injured Drivers
0 - 15	0	0	0	0	0	0	0	0	0	0	0	0	0	0	0
16 - 20	1	0	1	2	1	0	0	0	0	1	0	0	0	0	0
21 - 24	1	0	0	0	0	0	3	0	2	4	0	3	2	0	2
25 - 64	10	1	7	11	0	4	8	1	2	7	1	2	9	1	5
65 +	3	0	2	2	0	0	3	0	0	1	0	1	1	0	0
Unknown	0	0	0	0	0	0	0	0	0	0	0	0	0	0	0
<b>Total</b>	<b>15</b>	<b>1</b>	<b>10</b>	<b>15</b>	<b>1</b>	<b>4</b>	<b>14</b>	<b>1</b>	<b>4</b>	<b>13</b>	<b>1</b>	<b>6</b>	<b>12</b>	<b>1</b>	<b>7</b>

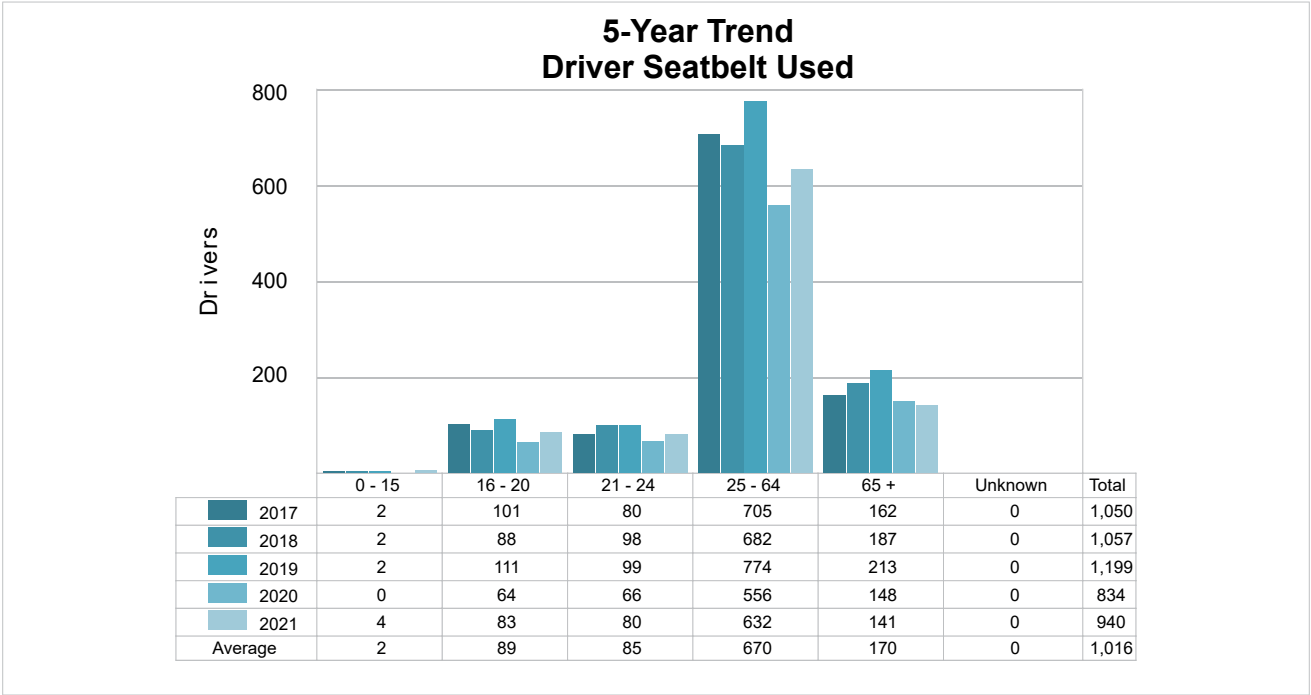
Note: Seatbelt Not Used includes no belts available or no belts used.



5-Year Trend - Seatbelt Used Among Drivers by Age

Age Group	2017			2018			2019			2020			2021		
	Drivers	Fatal Drivers	Injured Drivers	Drivers	Fatal Drivers	Injured Drivers	Drivers	Fatal Drivers	Injured Drivers	Drivers	Fatal Drivers	Injured Drivers	Drivers	Fatal Drivers	Injured Drivers
0 - 15	2	0	0	2	0	0	2	0	0	0	0	0	4	0	1
16 - 20	101	0	9	88	0	11	111	1	10	64	0	5	83	0	9
21 - 24	80	0	9	98	0	9	99	0	6	66	0	9	80	0	6
25 - 64	705	0	37	682	1	29	774	0	36	556	0	28	632	1	31
65 +	162	1	13	187	1	7	213	0	14	148	0	10	141	0	10
Unknown	0	0	0	0	0	0	0	0	0	0	0	0	0	0	0
Total	1,050	1	68	1,057	2	56	1,199	1	66	834	0	52	940	1	57

Note: Seatbelt Used includes shoulder belt only used, lap belt only used, both lap and shoulder belts used, and restraint failure.



## 5-Year Trend - Drivers in Crashes by Hazardous Action

Hazardous Action	2017		2018		2019		2020		2021	
	Total Drivers in Crashes	Drivers in Fatal Crashes	Total Drivers in Crashes	Drivers in Fatal Crashes	Total Drivers in Crashes	Drivers in Fatal Crashes	Total Drivers in Crashes	Drivers in Fatal Crashes	Total Drivers in Crashes	Drivers in Fatal Crashes
None	774	4	815	3	862	2	618	1	665	3
Speed Too Fast	125	1	129	3	176	0	90	1	99	0
Speed Too Slow	1	0	1	0	0	0	1	0	1	0
Failed to Yield	34	0	35	1	39	0	40	0	43	0
Disregard Traffic Control	5	1	2	0	4	0	3	0	3	0
Drove Wrong Way	0	0	0	0	1	0	0	0	1	0
Drove Left of Center	4	0	7	0	4	0	7	0	5	0
Improper Passing	5	0	6	0	8	0	4	1	8	0
Improper Lane Use	5	0	10	0	10	0	16	0	8	0
Improper Turn	8	0	3	0	12	0	4	0	9	0
Improper/No Signal	0	0	2	0	0	0	0	0	0	0
Improper Backing	14	0	12	0	17	0	8	0	7	0
Unable to Stop in Assured Clear Distance	58	2	38	0	55	0	32	0	60	1
Other	20	0	22	0	30	1	24	0	29	0
Unknown	29	0	46	1	34	1	18	1	38	1
Reckless Driving	12	0	2	0	2	0	3	0	4	0
Careless/Negligent Driving	46	0	32	0	49	1	43	0	47	1
Uncoded & Errors	4	0	5	0	3	0	0	0	0	0
<b>Total</b>	<b>1,144</b>	<b>8</b>	<b>1,167</b>	<b>8</b>	<b>1,306</b>	<b>5</b>	<b>911</b>	<b>4</b>	<b>1,027</b>	<b>6</b>

## Office of Highway Safety Planning

---

Physical Address:  
7150 Harris Drive  
Dimondale, Michigan 48821

Mailing Address:  
P.O. Box 30634  
Lansing, Michigan 48909

Find us on the web:  
[MichiganTrafficCrashFacts.org](http://MichiganTrafficCrashFacts.org)  
[mtcf-info@umich.edu](mailto:mtcf-info@umich.edu)

