



2021

MTCF
Michigan Traffic
Crash Facts

Michigan Traffic Crash Facts

Reporting Criteria

Please pay particular attention to the wording when interpreting the three levels of data gathered for this report.

Crash

The Crash Level analyzes data related to crash events and returns one result per crash.

Examples: Time, weather, and location.

Units

The Units Level analyzes the experience of the units in the crash and returns one result per vehicle, driver, pedestrian, bicyclist, or train.

Examples: Vehicle type, driver condition, and unit events.

People

The People Level analyzes the experience of the people involved in the crash and returns one result per occupant/person/party.

Examples: Age, injury severity, and seat belt or helmet use.

KABCO Injury Indicator:

K = Killed

A = Suspected Serious Injury

B = Suspected Minor Injury

C = Possible Injury

O = No Injury

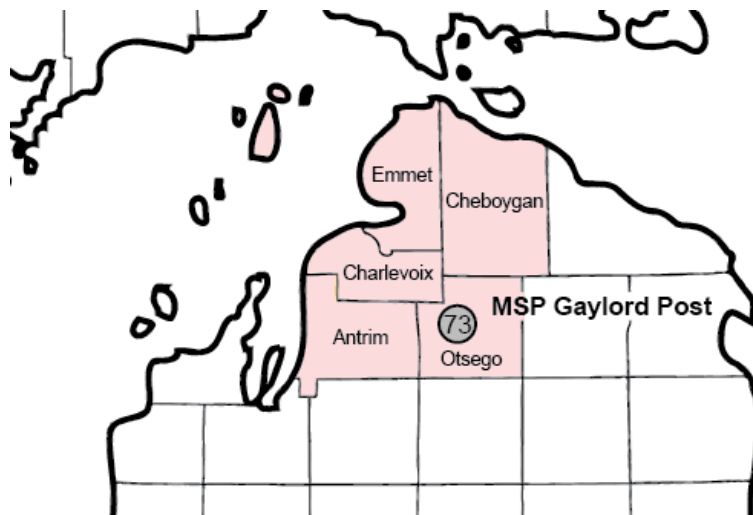
Property Damage Only (PDO)



Michigan State Police (MSP) Post 73 - Gaylord

2021 Traffic Crash Data & 2017-2021 5-Year Trends

MSP Post 73 - Gaylord is comprised of Antrim, Charlevoix, Cheboygan, Emmet and Otsego counties. Trend tables for this report are based on those counties.



Sources:

The crashes in this report occurred on public roadways in Michigan and resulted in injuries, fatalities, or property damage (with \$1,000 as a reporting threshold). The information was gathered from Michigan Traffic Crash Report Forms (UD-10) submitted by local police departments, sheriff's offices, and the Michigan State Police. Other related information was obtained from the departments of Transportation, State, and Community Health.

MSP Post 73 - Gaylord

- There were 4,918 crashes in Post 73 during 2021. [Page 1]
- A total of 17 fatalities resulted from 16 fatal crashes in 2021 in Post 73. [Page 1]
- There were 772 injuries and 580 injury crashes. [Page 1]
- There were 4,322 property damage only crashes (no fatalities or injuries). [Page 1]
- November had the highest number of crashes (669). [Pages 1-2]
- August had the highest number of fatal crashes (5) and fatalities (5). [Pages 1-2]
- July had the highest number of injury crashes (69) while October had the highest number of injuries (100). [Page 1]
- November had the highest number of property damage only crashes (606). [Page 1]
- Of all vehicles involved in fatal crashes, 6 (24.0%) were motorcycles. [Page 1]
- Friday was the day of the week with the highest number of crashes (781) and Tuesday, Thursday, Friday, and Saturday had the highest number of fatal crashes (3). [Pages 2-3]
- The 6:00 AM – 8:59 AM time period had the highest number of crashes (959). This holds true for every year between 2017 and 2021. The Noon – 2:59 PM time period had the highest number of fatal crashes (5). [Pages 5-6]
- During the period from 2017 to 2021, the highest number of deer crashes occurred in 2018 (2,772). The 6:00 AM – 8:59 AM time period consistently had the highest number of deer-involved crashes during the five-year period. There were 0 fatal crashes involving deer in 2021. [Page 7]
- Emmet County (25.2%) had the highest number of crashes in Post 73 in 2021, followed by Cheboygan County (21.4%), and Charlevoix County (19.6%). [Page 11]
- Otsego County (29.4%) had the highest number of fatalities in Post 73 in 2021, followed by Charlevoix County (23.5%), and Cheboygan and Emmet County (17.6%). [Page 11]
- The highest number of drivers in crashes (7,534) occurred during 2017 and the highest number of drivers coded drinking in crashes (207) occurred during 2017 within the five year period between 2017 and 2021. [Page 12]
- A total of 159 crashes involved alcohol in 2021. [Page 13]
- Alcohol-involved fatal crashes were the highest in 2020 during the five-year period from 2017 to 2021 at 7. [Page 13]
- A total of 59 crashes, 3 fatal crashes, and 5 suspected injury crashes involved drugs in 2021. [Page 14]
- There were 5,880 drivers wearing seatbelts and 58 drivers not wearing seatbelts in crashes in 2021. Of the 58 drivers not wearing seatbelts, 4 (6.9%) were killed and 24 (41.4%) were injured. [Pages 17-19]
- The most common hazardous action coded for drivers in 2021 in all crashes was speed too fast (670), while the most common hazardous actions coded for drivers in fatal crashes were speed too fast and other (4). [Page 20]

2021 - Crashes and Injury by Month

Month	Crashes				People	
	Total	Fatal	Injury	Property Damage Only (PDO)	Fatalities	Injuries
January	397	0	32	365	0	44
February	342	0	31	311	0	42
March	283	1	29	253	1	46
April	236	1	23	212	1	28
May	295	1	47	247	1	55
June	435	3	60	372	4	88
July	420	1	69	350	1	83
August	360	5	58	297	5	82
September	423	2	63	358	2	81
October	515	0	67	448	0	100
November	669	2	61	606	2	71
December	543	0	40	503	0	52
Total	4,918	16	580	4,322	17	772

2021 - Driver Statistics

Age Group	MSP Post 73 - Gaylord			Driver Rates	
	2019 Population*	Licensed Drivers	Drivers in Crashes	Per 10k Population	Per 10k Licensed
0 - 15	21,265	695	12	5.6	172.7
16 - 20	7,070	6,041	645	912.3	1,067.7
21 - 24	5,399	5,330	513	950.2	962.5
25 - 64	65,736	64,517	4,075	619.9	631.6
65 +	33,356	35,327	1,034	310.0	292.7
Unknown	0	0	189	--	--
Total	132,826	111,910	6,468	487.0	578.0

*2021 Population of Michigan Counties (by single-year of age) not yet available from U.S. Census Bureau.

2021 - Vehicles in Crashes

Vehicle Type	Motor Vehicles		Fatal Crashes		Injury Crashes	PDO Crashes
	Number of Vehicles	% of Total	Number	% of Total	Number	Number
Passenger Car, SUV, Van	4,504	69.6	11	44.0	605	3,888
Motor Home	67	1.0	0	0.0	7	60
Pickup Truck	1,496	23.1	4	16.0	185	1,307
Small Truck Under 10,000 lbs. GVWR	58	0.9	0	0.0	4	54
Motorcycle	69	1.1	6	24.0	50	13
Moped/Goped	5	0.1	0	0.0	5	0
Go-Cart/Golf Cart	1	0.0	0	0.0	1	0
Snowmobile	12	0.2	0	0.0	5	7
Off-Road Vehicle (ORV)/All-Terrain Vehicle (ATV)	12	0.2	0	0.0	6	6
Other (non-registered farm equipment, construction equipment, snow plows, etc.)	18	0.3	1	4.0	5	12
Truck/Bus (over 10,000 lbs. GVWR/8+ occupants/hazmat placard)	166	2.6	3	12.0	28	135
Uncoded & Errors	60	0.9	0	0.0	5	55
Total	6,468	100.0	25	100.0	906	5,537

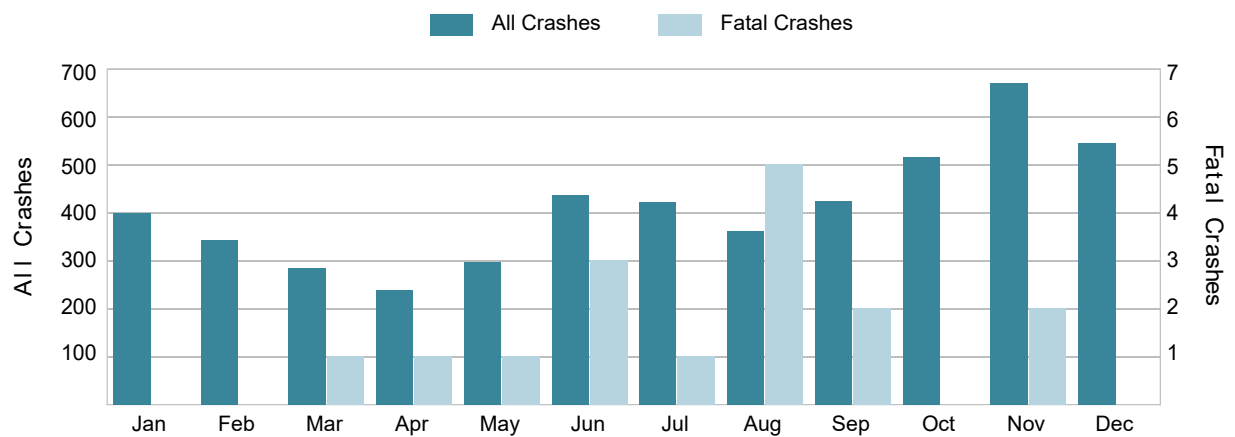
5-Year Trend - Crashes by Month

Month	2017		2018		2019		2020		2021	
	Total Crashes	Fatal Crashes	Total Crashes	Fatal Crashes	Total Crashes	Fatal Crashes	Total Crashes	Fatal Crashes	Total Crashes	Fatal Crashes
January	512	2	502	0	612	2	502	0	397	0
February	459	0	465	0	458	2	398	2	342	0
March	351	0	407	1	432	0	248	0	283	1
April	254	1	410	0	337	1	137	3	236	1
May	346	2	349	1	291	1	211	0	295	1
June	423	1	453	0	408	2	385	1	435	3
July	449	4	476	1	421	1	391	3	420	1
August	411	0	435	2	366	2	339	2	360	5
September	417	2	363	0	330	1	386	3	423	2
October	590	1	505	2	441	1	476	1	515	0
November	700	2	766	0	701	2	533	1	669	2
December	814	1	644	1	630	2	450	2	543	0
Total	5,726	16	5,775	8	5,427	17	4,456	18	4,918	16

5-Year Trend - Crashes by Day of Week

Day	2017		2018		2019		2020		2021	
	Total Crashes	Fatal Crashes	Total Crashes	Fatal Crashes	Total Crashes	Fatal Crashes	Total Crashes	Fatal Crashes	Total Crashes	Fatal Crashes
Monday	807	2	847	1	748	2	595	4	774	1
Tuesday	835	2	897	0	784	0	715	2	708	3
Wednesday	869	1	810	2	893	1	622	3	698	1
Thursday	844	4	822	1	850	4	706	2	747	3
Friday	948	0	1,019	1	887	4	689	2	781	3
Saturday	778	5	730	2	679	2	631	2	649	3
Sunday	645	2	650	1	586	4	498	3	561	2
Total	5,726	16	5,775	8	5,427	17	4,456	18	4,918	16

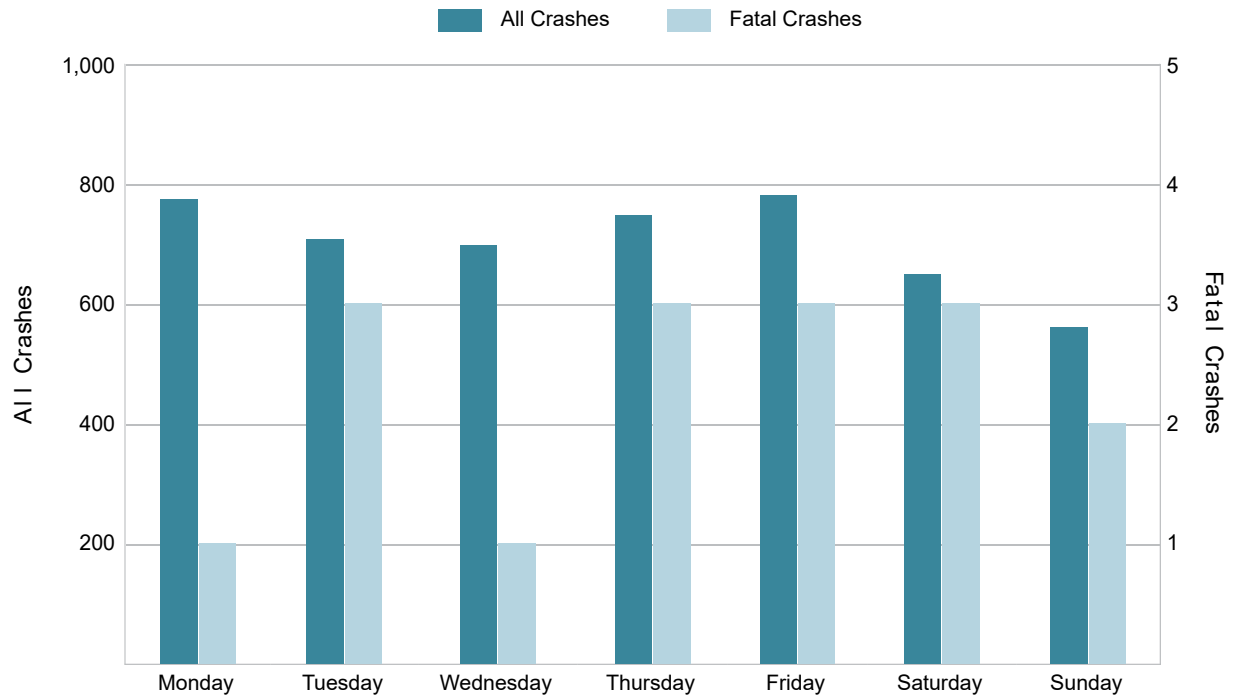
2021 Crashes by Month



2021 - Crashes by Day of Week

Day	All Crashes		Fatal Crashes		Injury Crashes			PDO Crashes
	Number	% of Total	Fatal	% of Fatal	A	B	C	Number
Monday	774	15.7	1	6.3	9	36	56	672
Tuesday	708	14.4	3	18.8	9	34	30	632
Wednesday	698	14.2	1	6.3	5	27	39	626
Thursday	747	15.2	3	18.8	12	36	46	650
Friday	781	15.9	3	18.8	16	19	44	699
Saturday	649	13.2	3	18.8	7	29	51	559
Sunday	561	11.4	2	12.5	12	28	35	484
Total	4,918	100.0	16	100.0	70	209	301	4,322

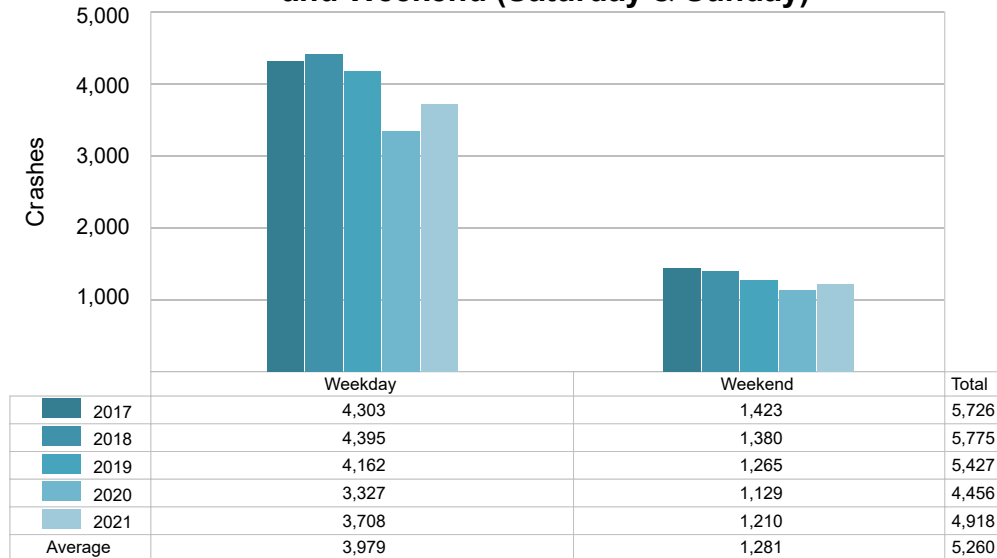
2021 Day of Week and Severity



5-Year Trend - Crashes by Weekday and Weekend

Portion of Week	2017		2018		2019		2020		2021	
	Total Crashes	Fatal Crashes	Total Crashes	Fatal Crashes	Total Crashes	Fatal Crashes	Total Crashes	Fatal Crashes	Total Crashes	Fatal Crashes
Weekday	4,303	9	4,395	5	4,162	11	3,327	13	3,708	11
Weekend	1,423	7	1,380	3	1,265	6	1,129	5	1,210	5
Total	5,726	16	5,775	8	5,427	17	4,456	18	4,918	16

5-Year Crash Trends by Weekday (Monday - Friday) and Weekend (Saturday & Sunday)

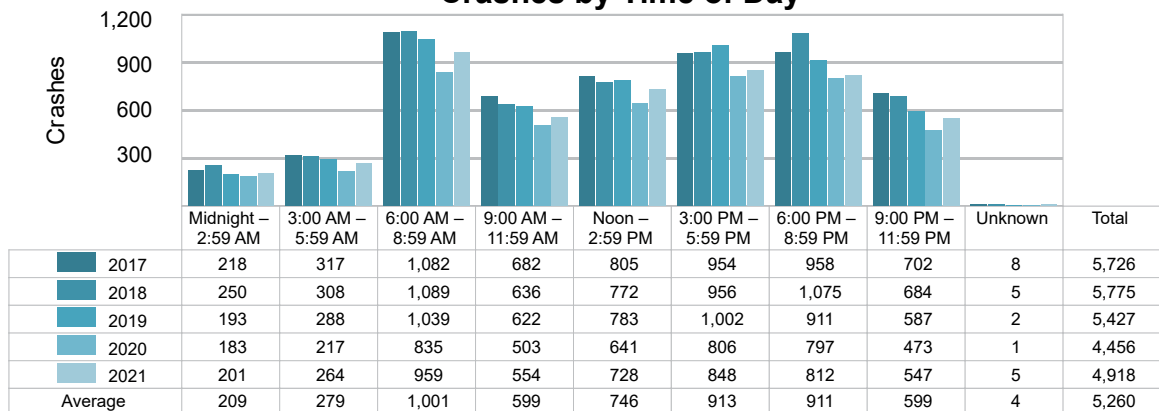


5-Year Trend - Crashes by Time of Day

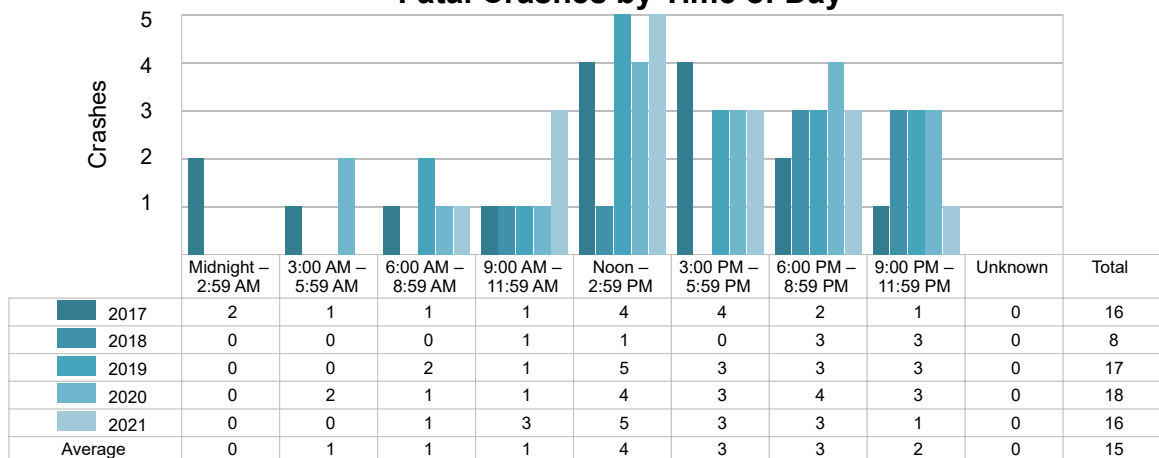
Time of Day	2017		2018		2019		2020		2021	
	Total Crashes	Fatal Crashes	Total Crashes	Fatal Crashes	Total Crashes	Fatal Crashes	Total Crashes	Fatal Crashes	Total Crashes	Fatal Crashes
Midnight – 2:59 AM	218	2	250	0	193	0	183	0	201	0
3:00 AM – 5:59 AM	317	1	308	0	288	0	217	2	264	0
6:00 AM – 8:59 AM	1,082 †	1	1,089 †	0	1,039 †	2	835 †	1	959 †	1
9:00 AM – 11:59 AM	682	1	636	1	622	1	503	1	554	3
Noon – 2:59 PM	805	4	772	1	783	5	641	4	728	5
3:00 PM – 5:59 PM	954	4	956	0	1,002	3	806	3	848	3
6:00 PM – 8:59 PM	958	2	1,075	3	911	3	797	4	812	3
9:00 PM – 11:59 PM	702	1	684	3	587	3	473	3	547	1
Unknown	8	0	5	0	2	0	1	0	5	0
Total	5,726	16	5,775	8	5,427	17	4,456	18	4,918	16

Note: † Indicates that the highest number of total crashes reported in the 5-year period occurred in the same time period.

5-Year Trend Crashes by Time of Day

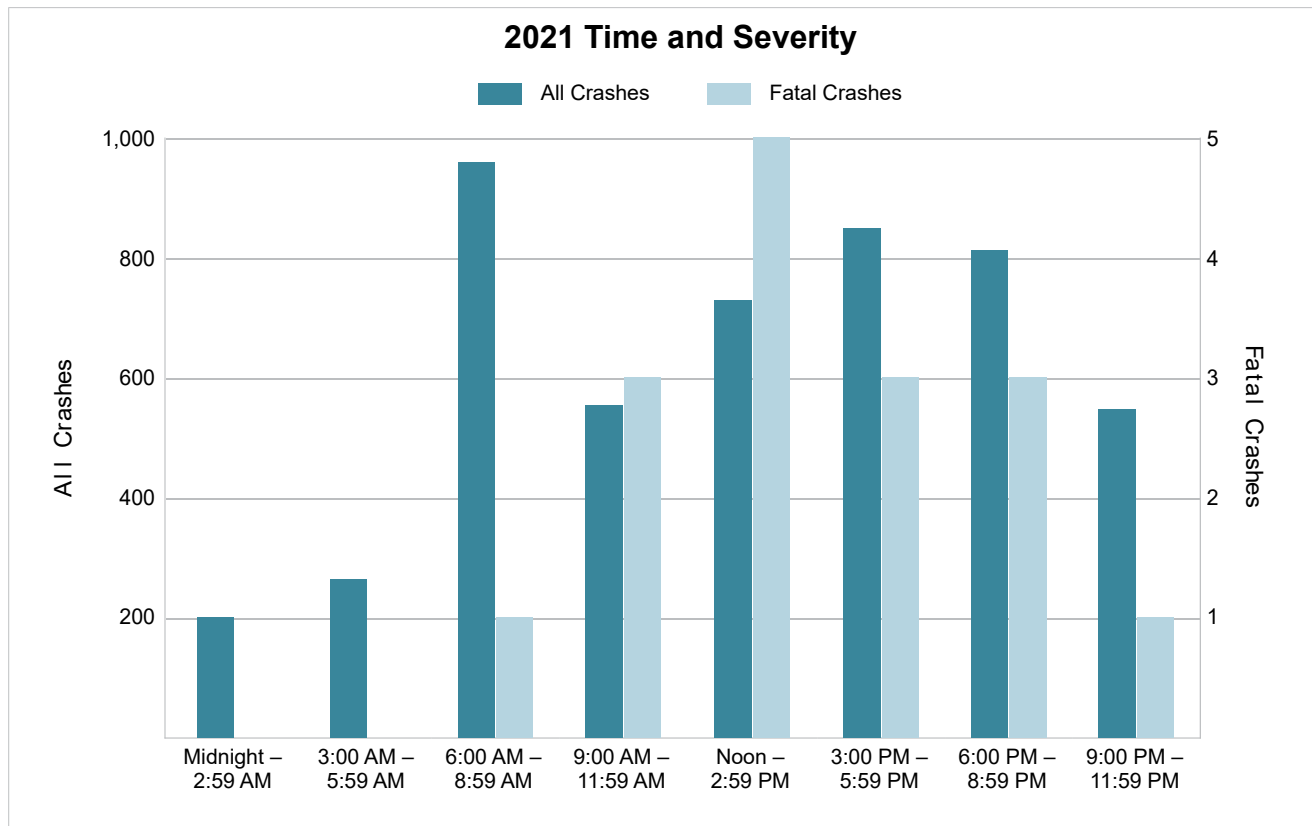


5-Year Trend Fatal Crashes by Time of Day



2021 - Time and Severity

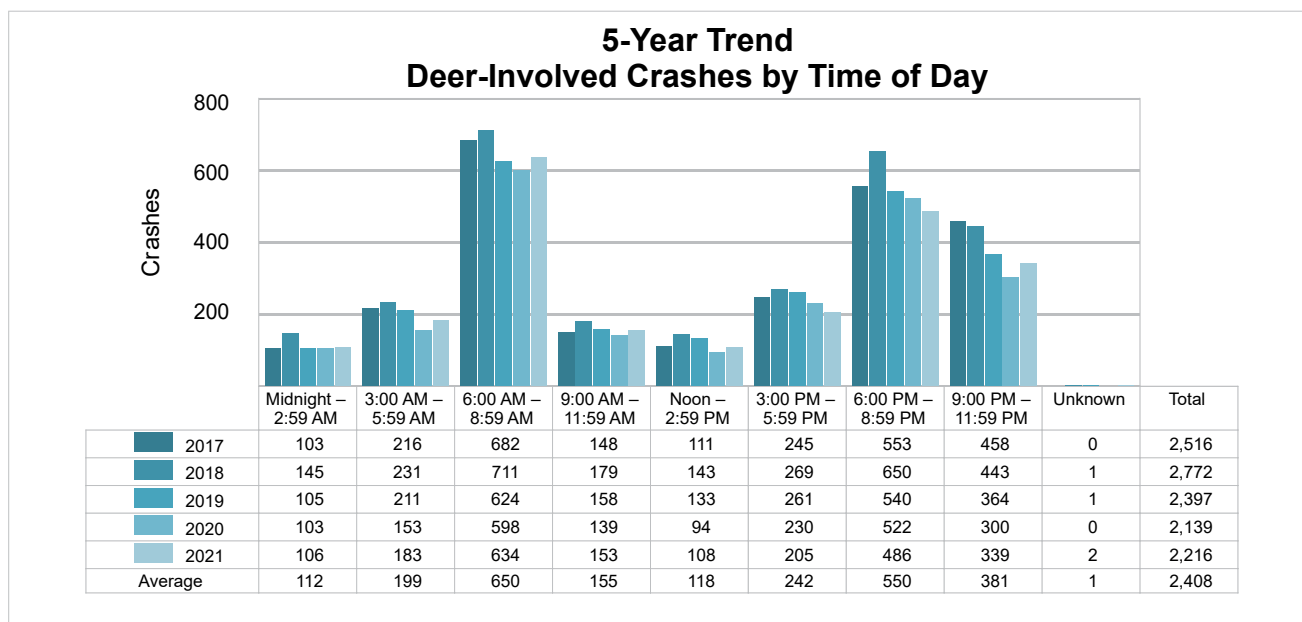
Time of Day	All Crashes		Fatal Crashes		Injury Crashes			PDO Crashes
	Number	% of Total	Number	% of Fatal	A	B	C	Number
Midnight – 2:59 AM	201	4.1	0	0.0	5	11	15	170
3:00 AM – 5:59 AM	264	5.4	0	0.0	1	6	10	247
6:00 AM – 8:59 AM	959	19.5	1	6.3	4	21	32	901
9:00 AM – 11:59 AM	554	11.3	3	18.8	8	31	37	475
Noon – 2:59 PM	728	14.8	5	31.3	15	37	66	605
3:00 PM – 5:59 PM	848	17.2	3	18.8	15	42	72	716
6:00 PM – 8:59 PM	812	16.5	3	18.8	13	34	34	728
9:00 PM – 11:59 PM	547	11.1	1	6.3	9	27	35	475
Unknown	5	0.1	0	0.0	0	0	0	5
Total	4,918	100.0	16	100.0	70	209	301	4,322



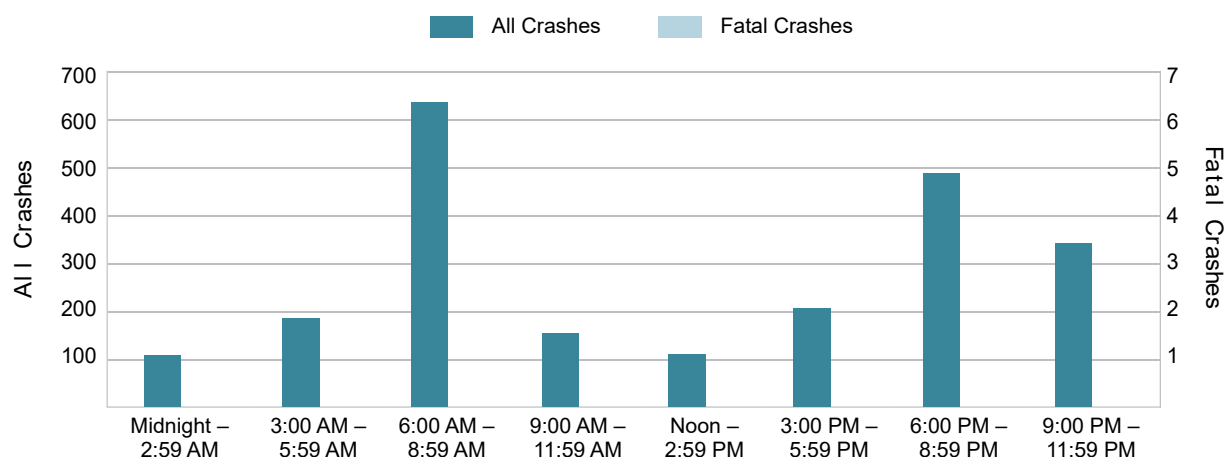
5-Year Trend - Deer-Involved Crashes by Time of Day

Time of Day	2017		2018		2019		2020		2021	
	Total Crashes	Fatal Crashes	Total Crashes	Fatal Crashes	Total Crashes	Fatal Crashes	Total Crashes	Fatal Crashes	Total Crashes	Fatal Crashes
Midnight – 2:59 AM	103	0	145	0	105	0	103	0	106	0
3:00 AM – 5:59 AM	216	0	231	0	211	0	153	1	183	0
6:00 AM – 8:59 AM	682 †	0	711 †	0	624 †	0	598 †	0	634 †	0
9:00 AM – 11:59 AM	148	0	179	0	158	0	139	0	153	0
Noon – 2:59 PM	111	0	143	0	133	0	94	0	108	0
3:00 PM – 5:59 PM	245	0	269	0	261	0	230	0	205	0
6:00 PM – 8:59 PM	553	0	650	1	540	0	522	0	486	0
9:00 PM – 11:59 PM	458	0	443	0	364	0	300	0	339	0
Unknown	0	0	1	0	1	0	0	0	2	0
Total	2,516	0	2,772	1	2,397	0	2,139	1	2,216	0

Note: † Indicates that the highest number of total crashes reported in the 5-year period occurred in the same time period.



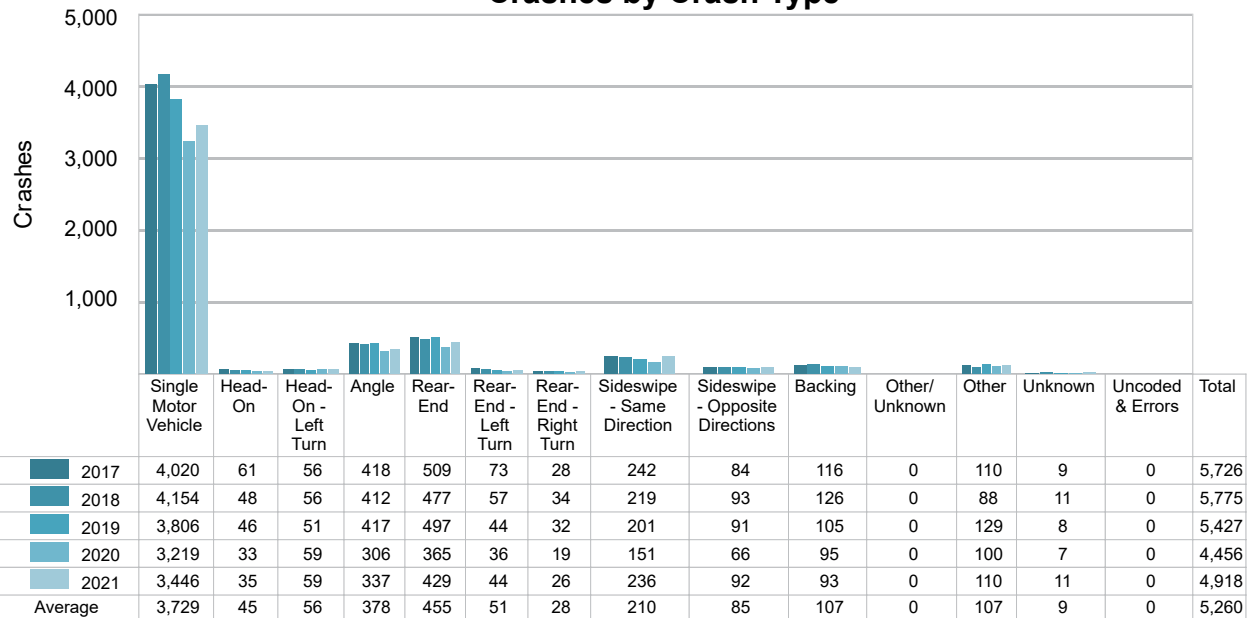
2021 Time and Severity of Deer-Involved Crashes



There were no fatal deer-involved crashes in MSP Post 73 - Gaylord in 2021.

5-Year Trend - Crashes by Crash Type

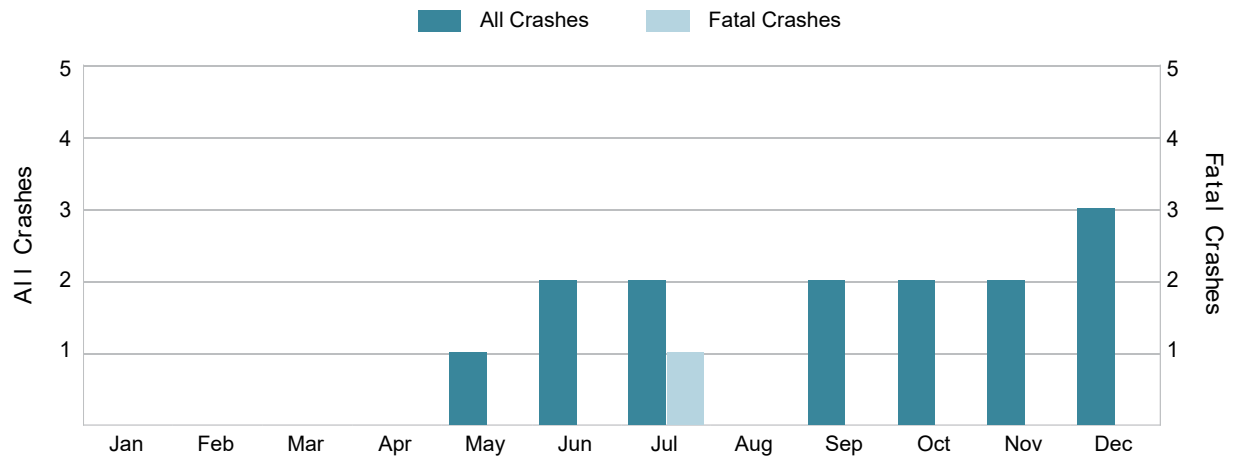
Crash Type	2017		2018		2019		2020		2021	
	Total Crashes	Fatal Crashes	Total Crashes	Fatal Crashes	Total Crashes	Fatal Crashes	Total Crashes	Fatal Crashes	Total Crashes	Fatal Crashes
Single Motor Vehicle	4,020	8	4,154	5	3,806	5	3,219	12	3,446	7
Head-On	61	4	48	1	46	4	33	3	35	5
Head-On - Left Turn	56	1	56	0	51	0	59	2	59	0
Angle	418	2	412	1	417	3	306	0	337	3
Rear-End	509	0	477	0	497	3	365	0	429	0
Rear-End - Left Turn	73	1	57	0	44	0	36	0	44	0
Rear-End - Right Turn	28	0	34	0	32	0	19	0	26	0
Sideswipe - Same Direction	242	0	219	0	201	1	151	0	236	1
Sideswipe - Opposite Directions	84	0	93	0	91	0	66	1	92	0
Backing	116	0	126	0	105	0	95	0	93	0
Other/Unknown	0	0	0	0	0	0	0	0	0	0
Other	110	0	88	1	129	1	100	0	110	0
Unknown	9	0	11	0	8	0	7	0	11	0
Uncoded & Errors	0	0	0	0	0	0	0	0	0	0
Total	5,726	16	5,775	8	5,427	17	4,456	18	4,918	16

5-Year Trend
Crashes by Crash Type

5-Year Trend - Pedestrian-Involved Crashes by Month

Month	2017		2018		2019		2020		2021	
	Total Crashes	Fatal Crashes	Total Crashes	Fatal Crashes	Total Crashes	Fatal Crashes	Total Crashes	Fatal Crashes	Total Crashes	Fatal Crashes
January	3	0	0	0	2	1	0	0	0	0
February	0	0	0	0	0	0	0	0	0	0
March	0	0	0	0	0	0	0	0	0	0
April	2	0	0	0	3	0	0	0	0	0
May	0	0	2	0	0	0	0	0	1	0
June	2	0	2	0	5	0	2	1	2	0
July	2	0	4	0	1	0	1	0	2	1
August	1	0	3	1	0	0	0	0	0	0
September	2	1	3	0	2	0	0	0	2	0
October	2	0	1	0	1	0	2	0	2	0
November	0	0	2	0	0	0	2	1	2	0
December	3	0	1	0	1	0	0	0	3	0
Total	17	1	18	1	15	1	7	2	14	1

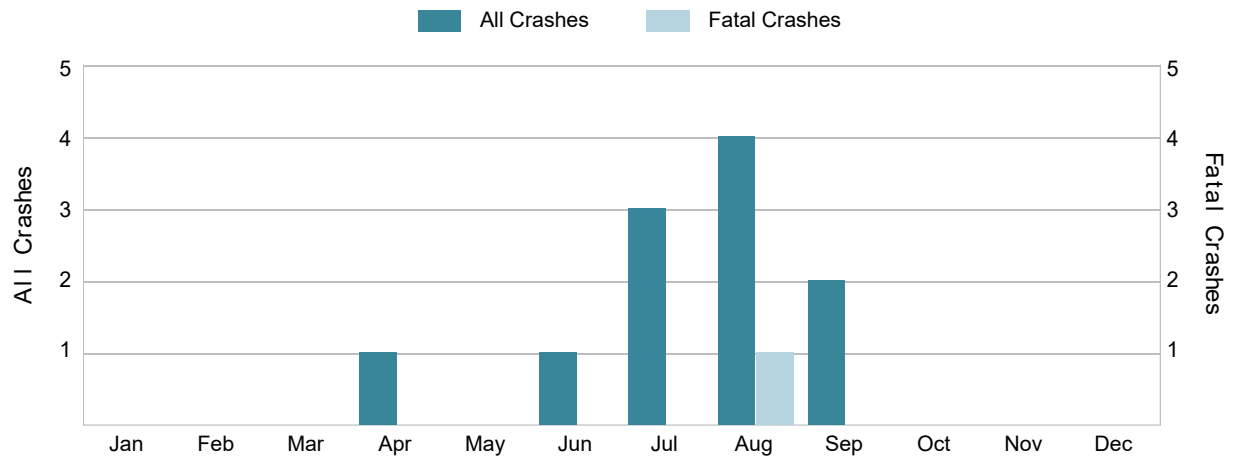
2021 Pedestrian-Involved Crashes by Month



5-Year Trend - Bicyclist-Involved Crashes by Month

Month	2017		2018		2019		2020		2021	
	Total Crashes	Fatal Crashes	Total Crashes	Fatal Crashes	Total Crashes	Fatal Crashes	Total Crashes	Fatal Crashes	Total Crashes	Fatal Crashes
January	0	0	0	0	0	0	0	0	0	0
February	0	0	0	0	0	0	0	0	0	0
March	0	0	0	0	0	0	0	0	0	0
April	1	0	0	0	2	0	0	0	1	0
May	0	0	2	0	2	0	0	0	0	0
June	4	0	1	0	2	0	2	0	1	0
July	4	0	6	0	2	0	1	0	3	0
August	1	0	3	0	2	0	3	0	4	1
September	0	0	3	0	2	0	3	0	2	0
October	1	0	2	0	1	0	0	0	0	0
November	0	0	0	0	0	0	0	0	0	0
December	1	0	0	0	0	0	0	0	0	0
Total	12	0	17	0	13	0	9	0	11	1

2021 Bicyclist-Involved Crashes by Month



2021 - Reported Motor Vehicle Crashes by County

County	Crashes												
	Total	Fatal	Injury	Property Damage	Inter-State	US Route	State Route	Local Street	Alcohol-Involved	Drug-Involved	Deer-Involved	Pedestrian-Involved	Bicyclist-Involved
Antrim	805	2	90	713	0	199	166	428	21	6	421	3	2
Charlevoix	962	4	90	868	0	235	170	552	30	13	508	6	2
Cheboygan	1,051	3	113	935	207	69	238	537	32	10	563	0	3
Emmet	1,237	3	161	1,073	10	432	118	669	47	22	419	0	2
Otsego	863	4	126	733	195	0	264	395	29	8	305	5	2
Total	4,918	16	580	4,322	412	935	956	2,581	159	59	2,216	14	11

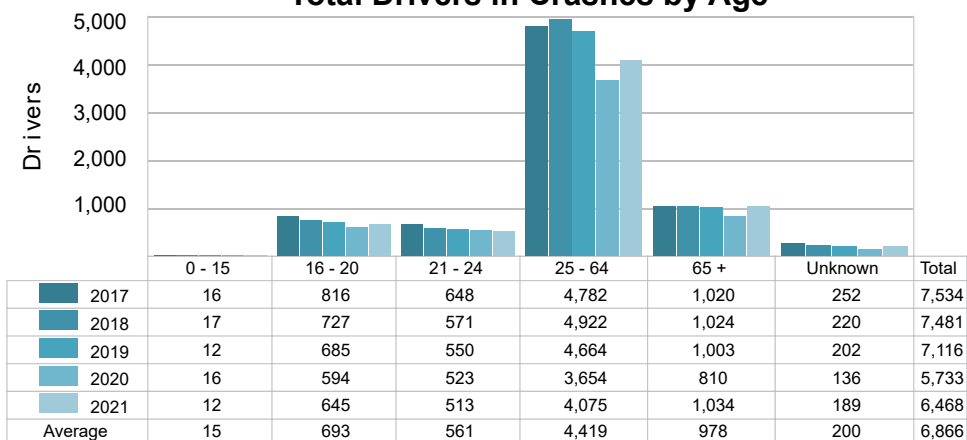
2021 - People in Reported Motor Vehicle Crashes by County

County	People					
	Fatalities	Suspected Serious Injuries	Suspected Minor Injuries	Possible Injuries	No Injuries	Uncoded & Errors
Antrim	2	25	69	76	962	44
Charlevoix	4	24	82	80	1,204	41
Cheboygan	3	23	91	94	1,229	16
Emmet	3	47	95	222	1,714	54
Otsego	5	42	87	162	1,289	19
Total	17	161	424	634	6,398	174

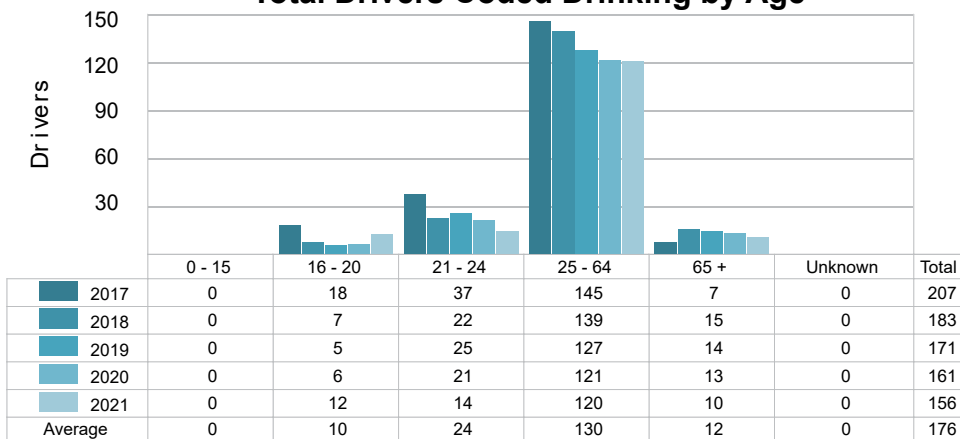
5-Year Trend - Drivers in Crashes Coded Drinking by Driver Age

Driver Age	2017		2018		2019		2020		2021	
	Total Drivers in Crashes	Total Drivers Coded Drinking	Total Drivers in Crashes	Total Drivers Coded Drinking	Total Drivers in Crashes	Total Drivers Coded Drinking	Total Drivers in Crashes	Total Drivers Coded Drinking	Total Drivers in Crashes	Total Drivers Coded Drinking
0 - 15	16	0	17	0	12	0	16	0	12	0
16 - 20	816	18	727	7	685	5	594	6	645	12
21 - 24	648	37	571	22	550	25	523	21	513	14
25 - 64	4,782	145	4,922	139	4,664	127	3,654	121	4,075	120
65 +	1,020	7	1,024	15	1,003	14	810	13	1,034	10
Unknown	252	0	220	0	202	0	136	0	189	0
Total	7,534	207	7,481	183	7,116	171	5,733	161	6,468	156

5-Year Trend Total Drivers in Crashes by Age



5-Year Trend Total Drivers Coded Drinking by Age



2021 - Bodily Alcohol Concentration (BAC) Results Among All Vehicle Drivers in Alcohol-Involved Crashes by Age

Age Group	Drivers				BAC Result Range for Drivers Coded Drinking				
	Total Drivers in Alcohol-Involved Crashes	Total Drivers Tested in all Crashes	Total Drivers Coded Drinking, Tested	Total Drivers Coded Drinking	BAC = 0.00	BAC 0.01 g/dL to 0.07 g/dL	BAC 0.08 g/dL to 0.16 g/dL	BAC 0.17 g/dL and Above	BAC Not Reported
0 - 15	0	0	0	0	0	0	0	0	0
16 - 20	15	20	11	12	0	2	3	1	6
21 - 24	18	14	12	14	0	1	6	0	7
25 - 64	138	120	92	120	0	8	30	31	51
65 +	12	14	8	10	0	1	2	1	6
Unknown	7	0	0	0	0	0	0	0	0
Total	190	168	123	156	0	12	41	33	70

Notes: BAC measured in grams (g) per deciliter (dL).

BAC may not be reported if drivers are not tested or if the results are not available immediately (as in the case of a blood test).

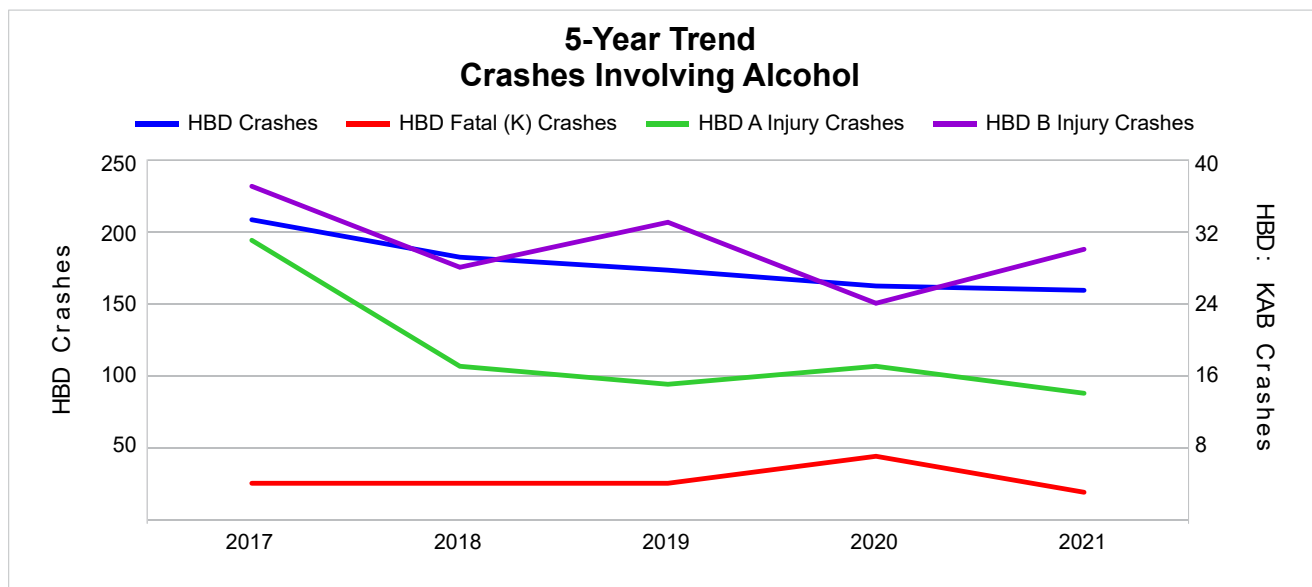
A driver may be coded by the officer as drinking even though no test is administered.

5-Year Trend - Crashes Involving Alcohol

Year	All Crashes	HBD Crashes	% HBD	Fatal Crashes	HBD Fatal Crashes	% HBD	A Injury Crashes	HBD A Injury Crashes	% HBD	B Injury Crashes	HBD B Injury Crashes	% HBD
2017	5,726	208	3.6	16	4	25.0	105	31	29.5	276	37	13.4
2018	5,775	182	3.2	8	4	50.0	74	17	23.0	232	28	12.1
2019	5,427	173	3.2	17	4	23.5	82	15	18.3	223	33	14.8
2020	4,456	162	3.6	18	7	38.9	67	17	25.4	160	24	15.0
2021	4,918	159 *	3.2	16	3 *	18.8 *	70	14 *	20.0	209	30	14.4

Note: * Indicates that the most recent year is the lowest number or percentage reported in the 5-year period in that column.

** Indicates that the most recent year is the highest number or percentage reported in the 5-year period in that column.



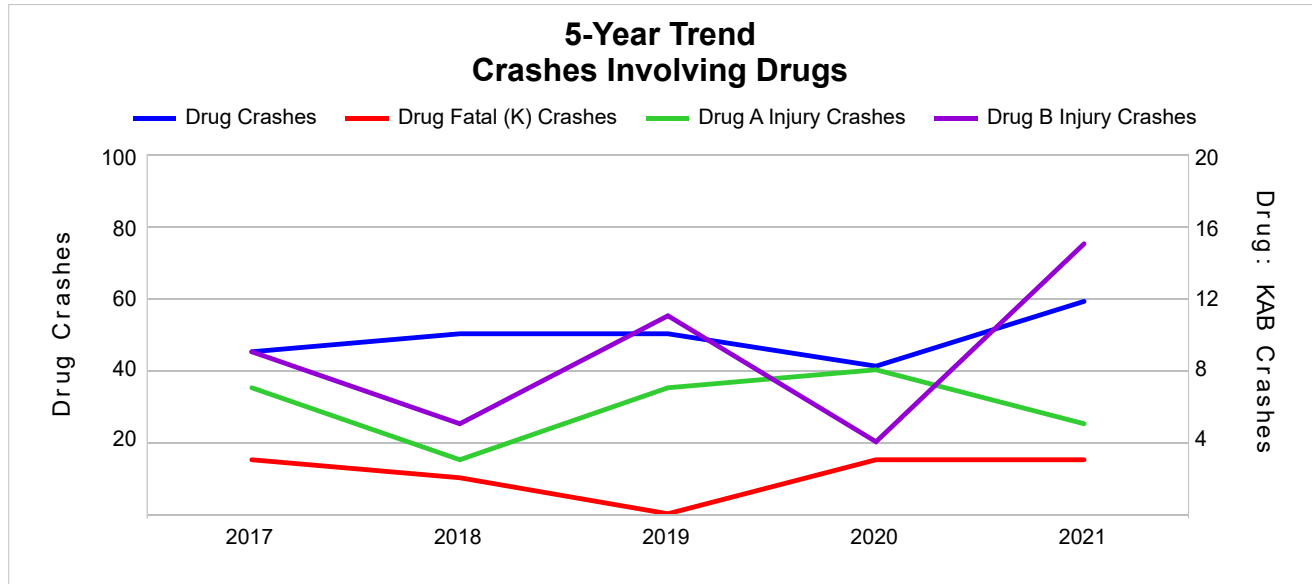
Note: Had-Been-Drinking (HBD)

5-Year Trend - Crashes Involving Drugs

Year	All Crashes	Drug Crashes	% Drug	Fatal Crashes	Drug Fatal Crashes	% Drug	A Injury Crashes	Drug A Injury Crashes	% Drug	B Injury Crashes	Drug B Injury Crashes	% Drug
2017	5,726	45	0.8	16	3	18.8	105	7	6.7	276	9	3.3
2018	5,775	50	0.9	8	2	25.0	74	3	4.1	232	5	2.2
2019	5,427	50	0.9	17	0	0.0	82	7	8.5	223	11	4.9
2020	4,456	41	0.9	18	3	16.7	67	8	11.9	160	4	2.5
2021	4,918	59 **	1.2 **	16	3	18.8	70	5	7.1	209	15 **	7.2 **

Note: * Indicates that the most recent year is the lowest number or percentage reported in the 5-year period in that column.

** Indicates that the most recent year is the highest number or percentage reported in the 5-year period in that column.

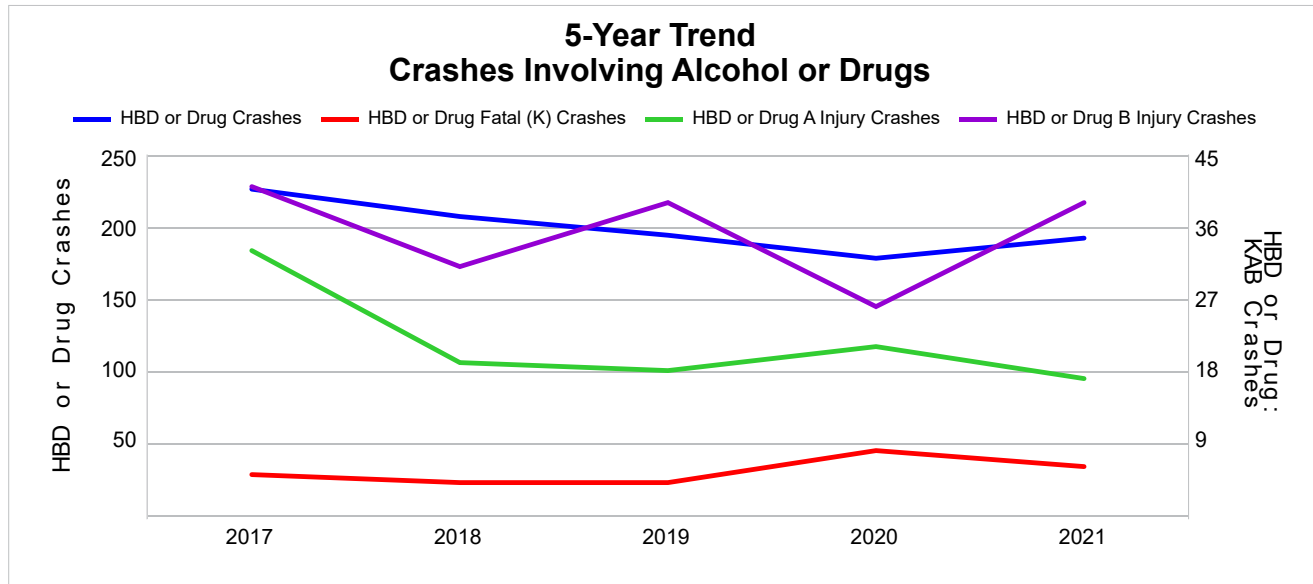


5-Year Trend - Crashes Involving Alcohol or Drugs

Year	All Crashes	HBD or Drug Crashes	% HBD or Drug	Fatal Crashes	HBD or Drug Fatal Crashes	% HBD or Drug	A Injury Crashes	HBD or Drug A Injury Crashes	% HBD or Drug	B Injury Crashes	HBD or Drug B Injury Crashes	% HBD or Drug
2017	5,726	226	3.9	16	5	31.3	105	33	31.4	276	41	14.9
2018	5,775	207	3.6	8	4	50.0	74	19	25.7	232	31	13.4
2019	5,427	194	3.6	17	4	23.5	82	18	22.0	223	39	17.5
2020	4,456	178	4.0	18	8	44.4	67	21	31.3	160	26	16.3
2021	4,918	192	3.9	16	6	37.5	70	17 *	24.3	209	39	18.7 **

Note: * Indicates that the most recent year is the lowest number or percentage reported in the 5-year period in that column.

** Indicates that the most recent year is the highest number or percentage reported in the 5-year period in that column.



Note: Had-Been-Drinking (HBD)

2021 - Restraints Worn Among Vehicle Drivers and Injured Passengers by Vehicle Type

Vehicle Type	Total Occupants			Fatalities			A - Suspected Serious			B - Suspected Minor			C - Possible Injury			No Injury		
	Total	Used Restraint	%	Total	Used Restraint	%	Total	Used Restraint	%	Total	Used Restraint	%	Total	Used Restraint	%	Total	Used Restraint	%
Passenger Car, SUV, Van	4,633	4,319	93.2	8	4	50.0	48	34	70.8	170	153	90.0	287	259	90.2	4,040	3,869	95.8
Motor Home	67	62	92.5	0	0	0.0	0	0	0.0	2	2	100.0	2	1	50.0	61	59	96.7
Pickup Truck	1,542	1,427	92.5	0	0	0.0	18	10	55.6	49	38	77.6	86	82	95.3	1,358	1,296	95.4
Small Truck Under 10,000 lbs. GVWR	59	54	91.5	0	0	0.0	1	1	100.0	0	0	0.0	2	2	100.0	53	51	96.2
Motorcycle	75	46	61.3	6	5	83.3	15	8	53.3	28	21	75.0	10	7	70.0	15	5	33.3
Moped/Goped	6	1	16.7	0	0	0.0	2	0	0.0	4	1	25.0	0	0	0.0	0	0	0.0
Go-Cart/Golf Cart	2	0	0.0	0	0	0.0	0	0	0.0	2	0	0.0	0	0	0.0	0	0	0.0
Snowmobile	12	9	75.0	0	0	0.0	4	4	100.0	0	0	0.0	1	0	0.0	7	5	71.4
Off-Road Vehicle (ORV)/All-Terrain Vehicle (ATV)	12	4	33.3	0	0	0.0	0	0	0.0	4	2	50.0	2	2	100.0	5	0	0.0
Other (non-registered farm equipment, construction equipment, snow plows, etc.)	18	11	61.1	0	0	0.0	1	0	0.0	0	0	0.0	0	0	0.0	16	11	68.8
Truck/Bus (over 10,000 lbs. GVWR/8+ occupants/hazmat placard)	168	156	92.9	1	0	0.0	0	0	0.0	3	2	66.7	8	7	87.5	154	147	95.5
Uncoded & Errors	60	0	0.0	0	0	0.0	1	0	0.0	0	0	0.0	0	0	0.0	6	0	0.0
Total	6,654	6,089	91.5	15	9	60.0	90	57	63.3	262	219	83.6	398	360	90.5	5,715	5,443	95.2

Note: Restraint Use includes shoulder belt only used, lap belt only used, both lap and shoulder belts used, child restraint used, restraint failure, and helmet worn.

2021 - Restraints Worn Among Vehicle Drivers and Injured Passengers by Age

Age Group	Total Occupants			Fatalities			A - Suspected Serious			B - Suspected Minor			C - Possible Injury			No Injury		
	Total	Used Restraint	%	Total	Used Restraint	%	Total	Used Restraint	%	Total	Used Restraint	%	Total	Used Restraint	%	Total	Used Restraint	%
0 - 15	44	40	90.9	0	0	0.0	3	3	100.0	12	10	83.3	21	20	95.2	8	7	87.5
16 - 20	683	639	93.6	2	1	50.0	11	5	45.5	33	26	78.8	57	49	86.0	580	558	96.2
21 - 24	525	491	93.5	1	1	100.0	4	2	50.0	34	28	82.4	32	29	90.6	452	431	95.4
25 - 64	4,157	3,915	94.2	9	4	44.4	58	38	65.5	138	115	83.3	220	197	89.5	3,720	3,560	95.7
65 +	1,056	1,004	95.1	3	3	100.0	13	9	69.2	45	40	88.9	68	65	95.6	926	887	95.8
Unknown	189	0	0.0	0	0	0.0	1	0	0.0	0	0	0.0	0	0	0.0	29	0	0.0
Total	6,654	6,089	91.5	15	9	60.0	90	57	63.3	262	219	83.6	398	360	90.5	5,715	5,443	95.2

Note: Restraint Use includes shoulder belt only used, lap belt only used, both lap and shoulder belts used, child restraint used, restraint failure, and helmet worn.

5-Year Trend - Restraint Use Among Drivers

Restraint Use	2017			2018			2019			2020			2021		
	Drivers	Fatal Drivers	Injured Drivers	Drivers	Fatal Drivers	Injured Drivers	Drivers	Fatal Drivers	Injured Drivers	Drivers	Fatal Drivers	Injured Drivers	Drivers	Fatal Drivers	Injured Drivers
No Belts Available	26	0	4	11	0	2	15	0	3	17	0	5	13	0	2
Shoulder Belt Only Used	14	0	3	12	0	0	27	0	4	18	0	2	36	0	3
Lap Belt Only Used	4	0	0	8	1	2	3	0	0	5	0	2	6	0	0
Both Lap & Shoulder Belt Used	6,940	7	601	6,905	2	508	6,561	6	509	5,204	6	422	5,838	2	441
No Belts Used	38	3	19	43	2	26	26	3	11	37	2	23	45	4	22
Child Restraint Used - Forward Facing	2	0	0	2	0	1	0	0	0	0	0	0	0	0	0
Child Restraint Not Used, Unavailable or Improper Use	0	0	0	0	0	0	0	0	0	0	0	0	0	0	0
Child Restraint Used - Rear Facing	1	0	0	0	0	0	0	0	0	0	0	0	0	0	0
Child Restraint Used - Booster Seat	1	0	1	0	0	0	0	0	0	0	0	0	0	0	0
Restraint Failure	2	0	0	2	0	0	0	0	0	0	0	0	0	0	0
Restraint Use Unknown	311	0	23	363	1	22	345	1	19	360	3	27	425	0	36
Helmet Worn	77	3	56	46	0	41	69	4	54	54	1	44	57	5	42
Helmet Not Worn	28	1	17	17	1	15	23	0	20	16	0	13	31	1	18
Helmet Use Unknown	5	0	2	6	0	4	8	0	3	7	0	6	6	0	3
Uncoded & Errors	85	0	0	66	0	0	39	0	0	15	0	0	11	0	0
Total	7,534	14	726	7,481	7	621	7,116	14	623	5,733	12	544	6,468	12	567

5-Year Trend - Restraint Use Among Drivers Coded Drinking

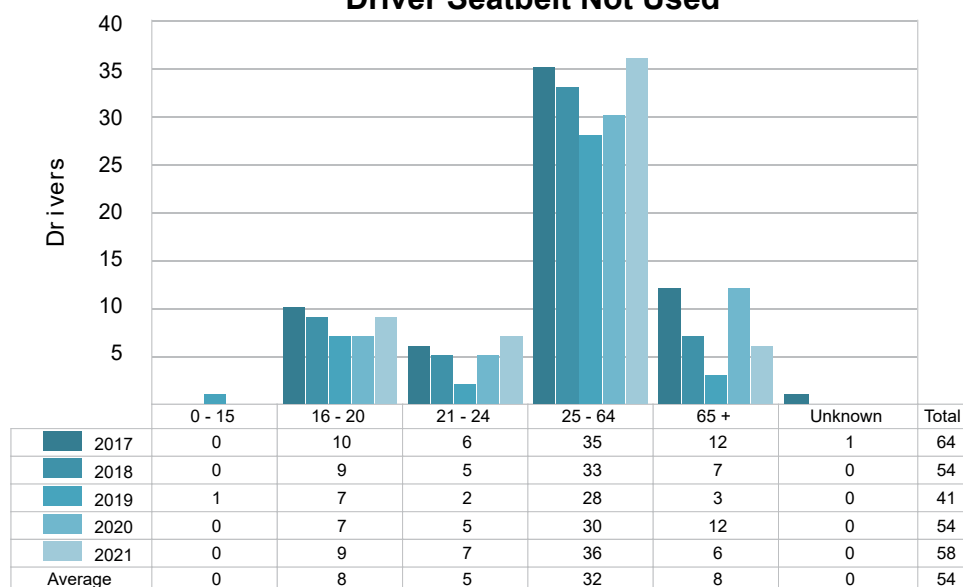
Restraint Use	2017			2018			2019			2020			2021		
	Drivers	Fatal Drivers	Injured Drivers	Drivers	Fatal Drivers	Injured Drivers	Drivers	Fatal Drivers	Injured Drivers	Drivers	Fatal Drivers	Injured Drivers	Drivers	Fatal Drivers	Injured Drivers
No Belts Available	1	0	0	2	0	2	1	0	0	0	0	0	0	0	0
Shoulder Belt Only Used	1	0	1	0	0	0	1	0	0	0	0	0	1	0	0
Lap Belt Only Used	0	0	0	1	1	0	0	0	0	0	0	0	1	0	0
Both Lap & Shoulder Belt Used	148	0	39	124	1	33	117	0	34	107	3	29	103	0	29
No Belts Used	14	3	11	12	1	7	8	2	4	6	0	6	9	2	5
Child Restraint Used - Forward Facing	0	0	0	0	0	0	0	0	0	0	0	0	0	0	0
Child Restraint Not Used, Unavailable or Improper Use	0	0	0	0	0	0	0	0	0	0	0	0	0	0	0
Child Restraint Used - Rear Facing	0	0	0	0	0	0	0	0	0	0	0	0	0	0	0
Child Restraint Used - Booster Seat	0	0	0	0	0	0	0	0	0	0	0	0	0	0	0
Restraint Failure	0	0	0	0	0	0	0	0	0	0	0	0	0	0	0
Restraint Use Unknown	32	0	14	36	0	9	35	0	10	41	2	11	35	0	13
Helmet Worn	4	0	4	2	0	2	5	1	4	5	1	4	4	0	4
Helmet Not Worn	6	0	6	6	0	6	4	0	3	2	0	2	3	0	3
Helmet Use Unknown	1	0	1	0	0	0	0	0	0	0	0	0	0	0	0
Uncoded & Errors	0	0	0	0	0	0	0	0	0	0	0	0	0	0	0
Total	207	3	76	183	3	59	171	3	55	161	6	52	156	2	54

5-Year Trend - Seatbelt Not Used Among Drivers by Age

Age Group	2017			2018			2019			2020			2021		
	Drivers	Fatal Drivers	Injured Drivers	Drivers	Fatal Drivers	Injured Drivers	Drivers	Fatal Drivers	Injured Drivers	Drivers	Fatal Drivers	Injured Drivers	Drivers	Fatal Drivers	Injured Drivers
0 - 15	0	0	0	0	0	0	1	0	1	0	0	0	0	0	0
16 - 20	10	1	3	9	0	5	7	1	2	7	0	3	9	1	3
21 - 24	6	0	4	5	1	4	2	0	1	5	0	1	7	0	5
25 - 64	35	2	11	33	1	16	28	2	9	30	1	18	36	3	16
65 +	12	0	5	7	0	3	3	0	1	12	1	6	6	0	0
Unknown	1	0	0	0	0	0	0	0	0	0	0	0	0	0	0
Total	64	3	23	54	2	28	41	3	14	54	2	28	58	4	24

Note: Seatbelt Not Used includes no belts available or no belts used.

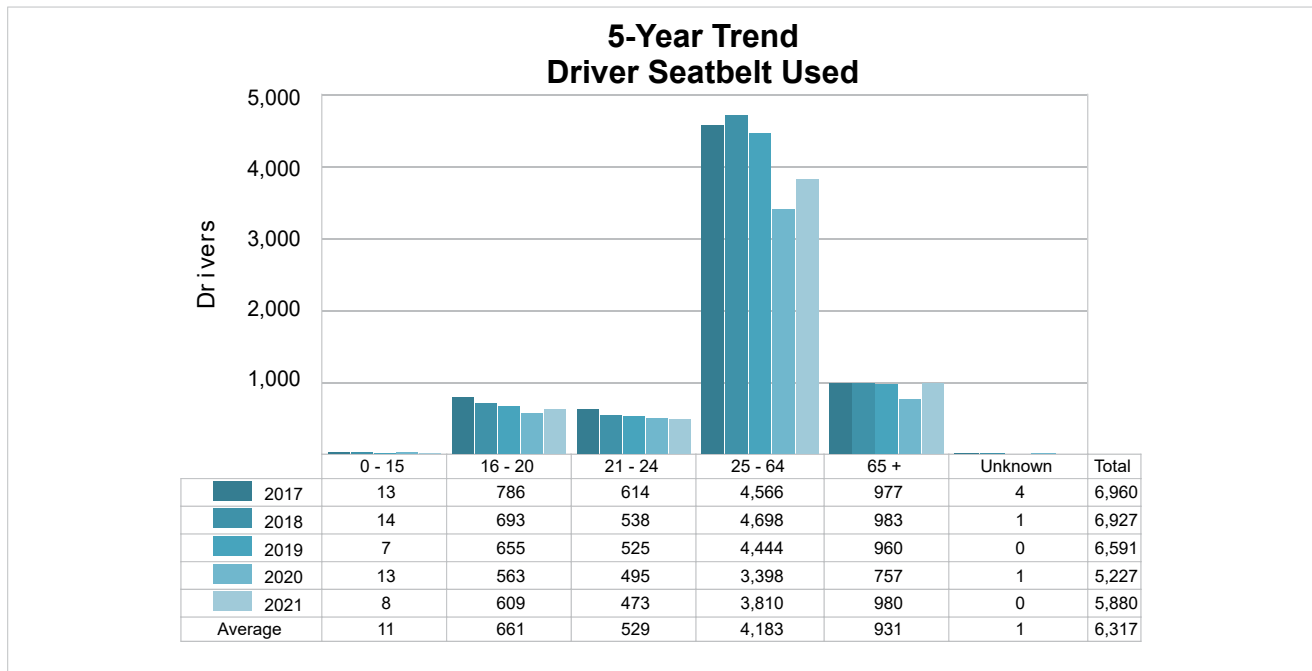
5-Year Trend Driver Seatbelt Not Used



5-Year Trend - Seatbelt Used Among Drivers by Age

Age Group	2017			2018			2019			2020			2021		
	Drivers	Fatal Drivers	Injured Drivers	Drivers	Fatal Drivers	Injured Drivers	Drivers	Fatal Drivers	Injured Drivers	Drivers	Fatal Drivers	Injured Drivers	Drivers	Fatal Drivers	Injured Drivers
0 - 15	13	0	1	14	0	1	7	0	0	13	0	2	8	0	2
16 - 20	786	2	105	693	0	76	655	1	62	563	0	60	609	0	53
21 - 24	614	0	62	538	2	40	525	0	51	495	1	40	473	0	43
25 - 64	4,566	3	339	4,698	0	309	4,444	4	321	3,398	4	258	3,810	1	253
65 +	977	2	96	983	1	84	960	1	79	757	1	66	980	1	93
Unknown	4	0	1	1	0	0	0	0	0	1	0	0	0	0	0
Total	6,960	7	604	6,927	3	510	6,591	6	513	5,227	6	426	5,880	2	444

Note: Seatbelt Used includes shoulder belt only used, lap belt only used, both lap and shoulder belts used, and restraint failure.



5-Year Trend - Drivers in Crashes by Hazardous Action

Hazardous Action	2017		2018		2019		2020		2021	
	Total Drivers in Crashes	Drivers in Fatal Crashes	Total Drivers in Crashes	Drivers in Fatal Crashes	Total Drivers in Crashes	Drivers in Fatal Crashes	Total Drivers in Crashes	Drivers in Fatal Crashes	Total Drivers in Crashes	Drivers in Fatal Crashes
None	4,571	13	4,702	4	4,435	15	3,708	7	4,068	10
Speed Too Fast	1,071	4	842	2	939	7	606	7	670	4
Speed Too Slow	5	0	1	0	4	0	0	0	3	0
Failed to Yield	467	2	471	1	464	1	389	3	431	2
Disregard Traffic Control	65	0	59	0	48	1	50	0	64	0
Drove Wrong Way	3	0	2	0	3	1	2	0	1	0
Drove Left of Center	55	3	60	1	46	0	36	2	33	1
Improper Passing	26	0	29	0	25	2	27	0	26	1
Improper Lane Use	85	0	65	0	67	0	53	0	80	0
Improper Turn	36	0	53	0	46	0	37	0	57	0
Improper/No Signal	2	0	6	0	6	0	3	0	5	0
Improper Backing	105	0	126	0	81	0	78	0	86	0
Unable to Stop in Assured Clear Distance	459	1	449	0	448	1	332	0	391	0
Other	190	0	199	0	165	0	134	0	181	4
Unknown	92	1	113	1	129	2	102	4	132	1
Reckless Driving	19	1	34	0	25	0	16	2	25	1
Careless/Negligent Driving	195	0	212	3	155	1	153	1	210	1
Uncoded & Errors	88	0	58	0	30	0	7	0	5	0
Total	7,534	25	7,481	12	7,116	31	5,733	26	6,468	25

Office of Highway Safety Planning

Physical Address:
7150 Harris Drive
Dimondale, Michigan 48821

Mailing Address:
P.O. Box 30634
Lansing, Michigan 48909

Find us on the web:
MichiganTrafficCrashFacts.org
mtcf-info@umich.edu

