



2021

MTCF
Michigan Traffic
Crash Facts

Michigan Traffic Crash Facts

Reporting Criteria

Please pay particular attention to the wording when interpreting the three levels of data gathered for this report.

Crash

The Crash Level analyzes data related to crash events and returns one result per crash.

Examples: Time, weather, and location.

Units

The Units Level analyzes the experience of the units in the crash and returns one result per vehicle, driver, pedestrian, bicyclist, or train.

Examples: Vehicle type, driver condition, and unit events.

People

The People Level analyzes the experience of the people involved in the crash and returns one result per occupant/person/party.

Examples: Age, injury severity, and seat belt or helmet use.

KABCO Injury Indicator:

K = Killed

A = Suspected Serious Injury

B = Suspected Minor Injury

C = Possible Injury

O = No Injury

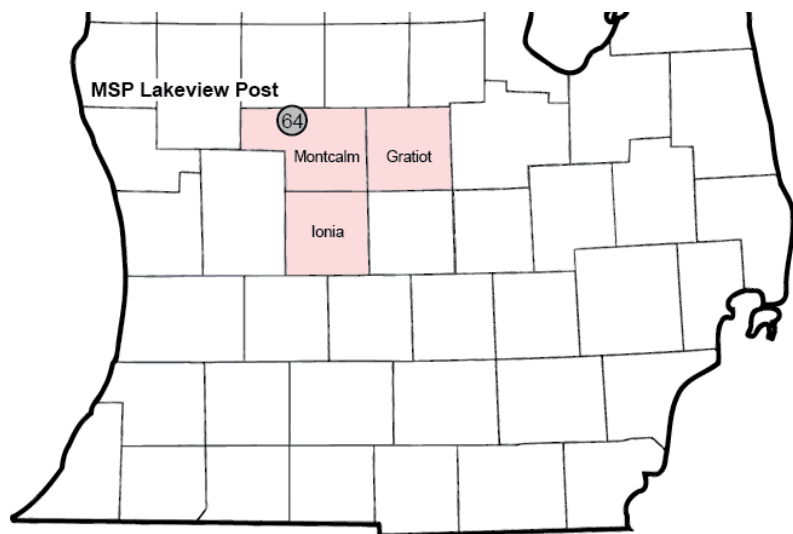
Property Damage Only (PDO)



Michigan State Police (MSP) Post 64 - Lakeview

2021 Traffic Crash Data & 2017-2021 5-Year Trends

MSP Post 64 - Lakeview is comprised of Gratiot, Ionia and Montcalm counties. Trend tables for this report are based on those counties.



Sources:

The crashes in this report occurred on public roadways in Michigan and resulted in injuries, fatalities, or property damage (with \$1,000 as a reporting threshold). The information was gathered from Michigan Traffic Crash Report Forms (UD-10) submitted by local police departments, sheriff's offices, and the Michigan State Police. Other related information was obtained from the departments of Transportation, State, and Community Health.

MSP Post 64 - Lakeview

- There were 5,223 crashes in Post 64 during 2021. [Page 1]
- A total of 31 fatalities resulted from 30 fatal crashes in 2021 in Post 64. [Page 1]
- There were 990 injuries and 725 injury crashes. [Page 1]
- There were 4,468 property damage only crashes (no fatalities or injuries). [Page 1]
- November had the highest number of crashes (668). [Pages 1-2]
- September had the highest number of fatal crashes (7) and fatalities (7). [Pages 1-2]
- June had the highest number of injury crashes (80) while September had the highest number of injuries (115). [Page 1]
- November had the highest number of property damage only crashes (607). [Page 1]
- Of all vehicles involved in fatal crashes, 3 (7.1%) were motorcycles. [Page 1]
- Friday was the day of the week with the highest number of crashes (855) and Thursday had the highest number of fatal crashes (8). [Pages 2-3]
- The 6:00 PM – 8:59 PM time period had the highest number of crashes (986). The 3:00 PM – 5:59 PM time period had the highest number of fatal crashes (8). [Pages 5-6]
- During the period from 2017 to 2021, the highest number of deer crashes occurred in 2019 (2,558). The 6:00 PM – 8:59 PM time period had the highest number of deer-involved crashes. There was one fatal crash involving deer in 2021. [Page 7]
- Montcalm County (35.9%) had the highest number of crashes in Post 64 in 2021, followed by Ionia County (33.3%), and Gratiot County (30.7%). [Page 11]
- Ionia and Montcalm County (41.9%) had the highest number of fatalities in Post 64 in 2021, followed by Montcalm County (41.9%), and Gratiot County (16.1%). [Page 11]
- The highest number of drivers in crashes (7,690) occurred during 2019 and the highest number of drivers coded drinking in crashes (199) occurred during 2017 within the five year period between 2017 and 2021. [Page 12]
- A total of 149 crashes involved alcohol in 2021. [Page 13]
- Alcohol-involved fatal crashes were the highest in 2017 during the five-year period from 2017 to 2021 at 11. [Page 13]
- A total of 64 crashes, 4 fatal crashes, and 13 suspected injury crashes involved drugs in 2021. [Page 14]
- There were 6,331 drivers wearing seatbelts and 95 drivers not wearing seatbelts in crashes in 2021. Of the 95 drivers not wearing seatbelts, 10 (10.5%) were killed and 42 (44.2%) were injured. [Pages 17-19]
- The most common hazardous action coded for drivers in 2021 in all crashes was speed too fast (665), while the most common hazardous actions coded for drivers in fatal crashes were speed too fast and unknown (5). [Page 20]

2021 - Crashes and Injury by Month

Month	Crashes				People	
	Total	Fatal	Injury	Property Damage Only (PDO)	Fatalities	Injuries
January	473	2	51	420	2	64
February	456	1	37	418	1	49
March	292	1	39	252	1	48
April	295	2	59	234	2	76
May	362	1	60	301	1	87
June	386	1	80	305	1	110
July	394	2	62	330	2	89
August	338	4	69	265	4	100
September	421	7	79	335	7	115
October	573	0	64	509	0	88
November	668	4	57	607	4	80
December	565	5	68	492	6	84
Total	5,223	30	725	4,468	31	990

2021 - Driver Statistics

Age Group	MSP Post 64 - Lakeview			Driver Rates	
	2019 Population*	Licensed Drivers	Drivers in Crashes	Per 10k Population	Per 10k Licensed
0 - 15	31,895	917	13	4.1	141.8
16 - 20	10,687	7,595	824	771.0	1,084.9
21 - 24	8,989	7,029	672	747.6	956.0
25 - 64	89,050	75,619	4,453	500.1	588.9
65 +	28,675	28,186	748	260.9	265.4
Unknown	0	0	287	--	--
Total	169,296	119,346	6,997	413.3	586.3

*2021 Population of Michigan Counties (by single-year of age) not yet available from U.S. Census Bureau.

2021 - Vehicles in Crashes

Vehicle Type	Motor Vehicles		Fatal Crashes		Injury Crashes	PDO Crashes
	Number of Vehicles	% of Total	Number	% of Total	Number	Number
Passenger Car, SUV, Van	5,050	72.2	26	61.9	816	4,208
Motor Home	23	0.3	0	0.0	2	21
Pickup Truck	1,415	20.2	7	16.7	200	1,208
Small Truck Under 10,000 lbs. GVWR	33	0.5	0	0.0	3	30
Motorcycle	75	1.1	3	7.1	58	14
Moped/Goped	8	0.1	0	0.0	6	2
Go-Cart/Golf Cart	1	0.0	0	0.0	1	0
Snowmobile	2	0.0	0	0.0	1	1
Off-Road Vehicle (ORV)/All-Terrain Vehicle (ATV)	8	0.1	0	0.0	4	4
Other (non-registered farm equipment, construction equipment, snow plows, etc.)	42	0.6	2	4.8	8	32
Truck/Bus (over 10,000 lbs. GVWR/8+ occupants/hazmat placard)	226	3.2	4	9.5	49	173
Uncoded & Errors	114	1.6	0	0.0	5	109
Total	6,997	100.0	42	100.0	1,153	5,802

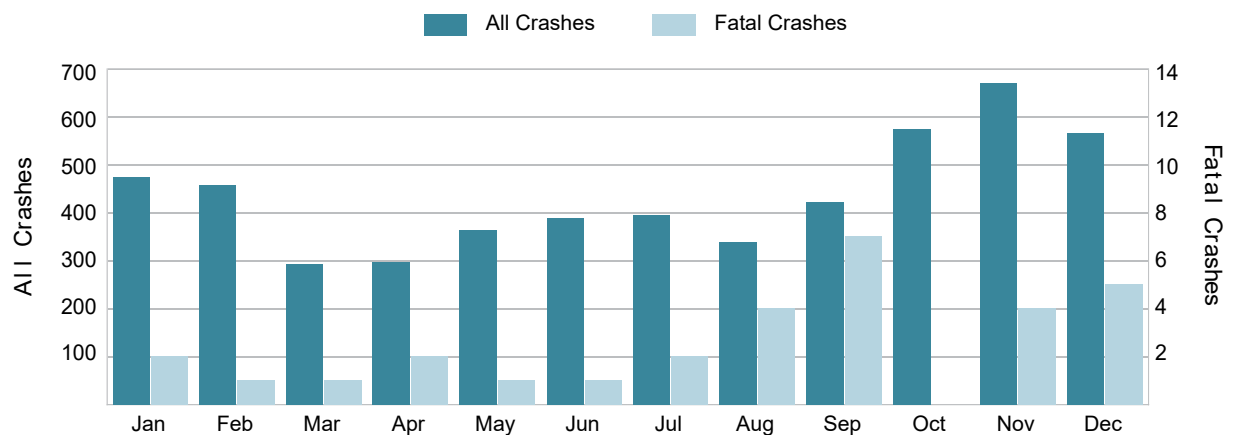
5-Year Trend - Crashes by Month

Month	2017		2018		2019		2020		2021	
	Total Crashes	Fatal Crashes	Total Crashes	Fatal Crashes	Total Crashes	Fatal Crashes	Total Crashes	Fatal Crashes	Total Crashes	Fatal Crashes
January	515	1	617	0	525	2	536	2	473	2
February	334	2	423	2	523	1	517	3	456	1
March	418	3	395	1	471	1	263	1	292	1
April	315	5	371	2	380	1	175	0	295	2
May	395	3	348	0	391	2	281	4	362	1
June	463	4	428	1	408	0	399	1	386	1
July	363	4	392	1	388	3	352	4	394	2
August	320	2	325	3	383	3	290	2	338	4
September	382	2	409	1	341	6	373	1	421	7
October	609	3	642	6	627	1	605	4	573	0
November	671	4	726	3	823	1	588	3	668	4
December	771	1	507	1	565	3	410	1	565	5
Total	5,556	34	5,583	21	5,825	24	4,789	26	5,223	30

5-Year Trend - Crashes by Day of Week

Day	2017		2018		2019		2020		2021	
	Total Crashes	Fatal Crashes	Total Crashes	Fatal Crashes	Total Crashes	Fatal Crashes	Total Crashes	Fatal Crashes	Total Crashes	Fatal Crashes
Monday	784	3	857	3	842	3	612	2	758	4
Tuesday	832	4	785	3	898	3	702	4	724	3
Wednesday	816	9	797	3	916	2	728	5	715	3
Thursday	798	6	778	1	805	6	732	1	834	8
Friday	887	1	936	6	881	2	717	6	855	6
Saturday	753	6	771	4	715	6	676	5	713	1
Sunday	686	5	659	1	768	2	622	3	624	5
Total	5,556	34	5,583	21	5,825	24	4,789	26	5,223	30

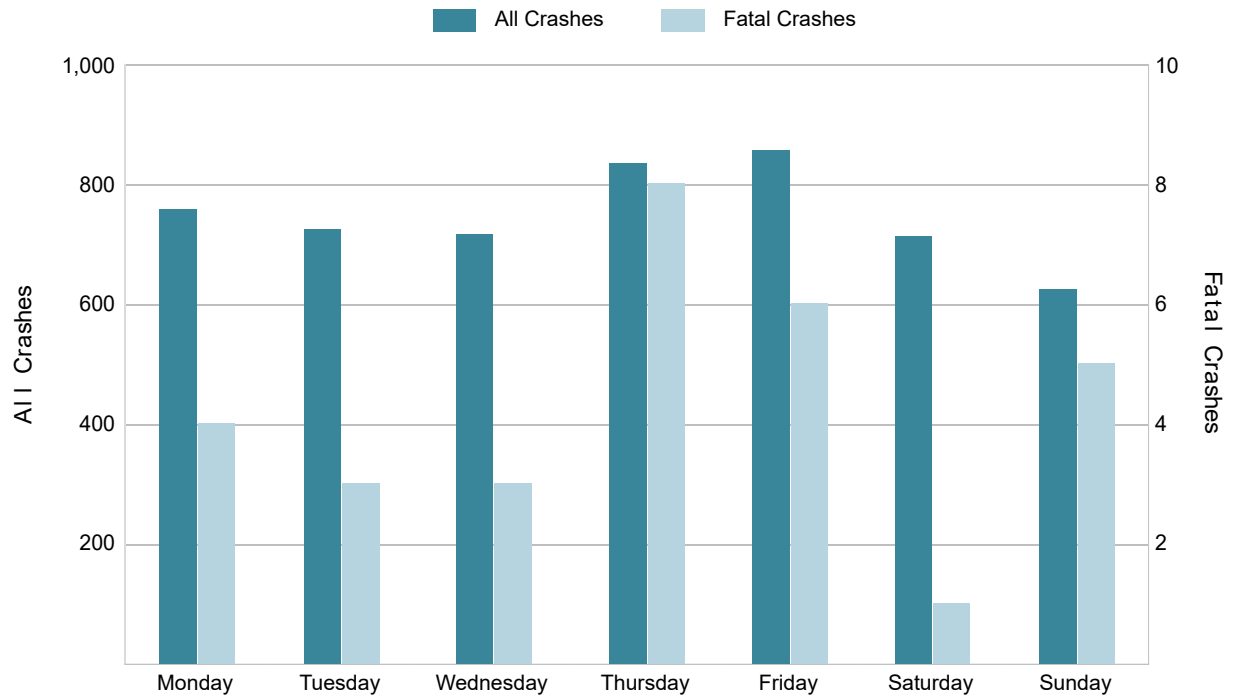
2021 Crashes by Month



2021 - Crashes by Day of Week

Day	All Crashes		Fatal Crashes		Injury Crashes			PDO Crashes
	Number	% of Total	Fatal	% of Fatal	A	B	C	Number
Monday	758	14.5	4	13.3	14	33	63	644
Tuesday	724	13.9	3	10.0	14	26	53	628
Wednesday	715	13.7	3	10.0	11	29	51	621
Thursday	834	16.0	8	26.7	16	39	63	708
Friday	855	16.4	6	20.0	27	34	62	726
Saturday	713	13.7	1	3.3	18	45	45	604
Sunday	624	11.9	5	16.7	17	32	33	537
Total	5,223	100.0	30	100.0	117	238	370	4,468

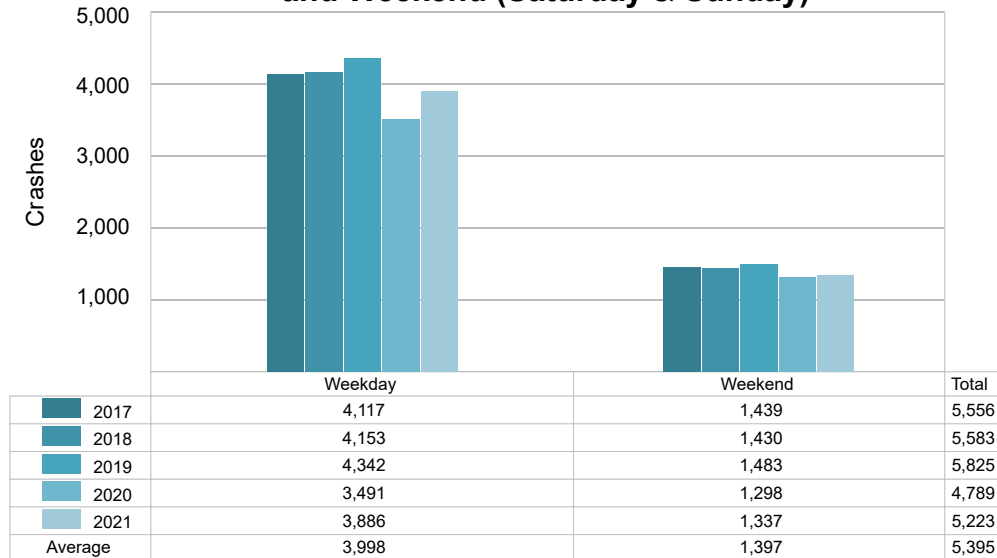
2021 Day of Week and Severity



5-Year Trend - Crashes by Weekday and Weekend

Portion of Week	2017		2018		2019		2020		2021	
	Total Crashes	Fatal Crashes	Total Crashes	Fatal Crashes	Total Crashes	Fatal Crashes	Total Crashes	Fatal Crashes	Total Crashes	Fatal Crashes
Weekday	4,117	23	4,153	16	4,342	16	3,491	18	3,886	24
Weekend	1,439	11	1,430	5	1,483	8	1,298	8	1,337	6
Total	5,556	34	5,583	21	5,825	24	4,789	26	5,223	30

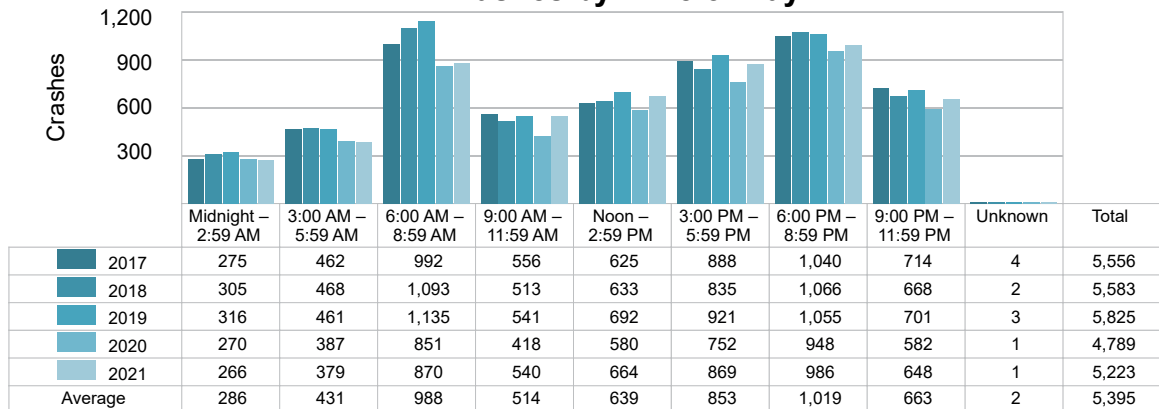
5-Year Crash Trends by Weekday (Monday - Friday) and Weekend (Saturday & Sunday)



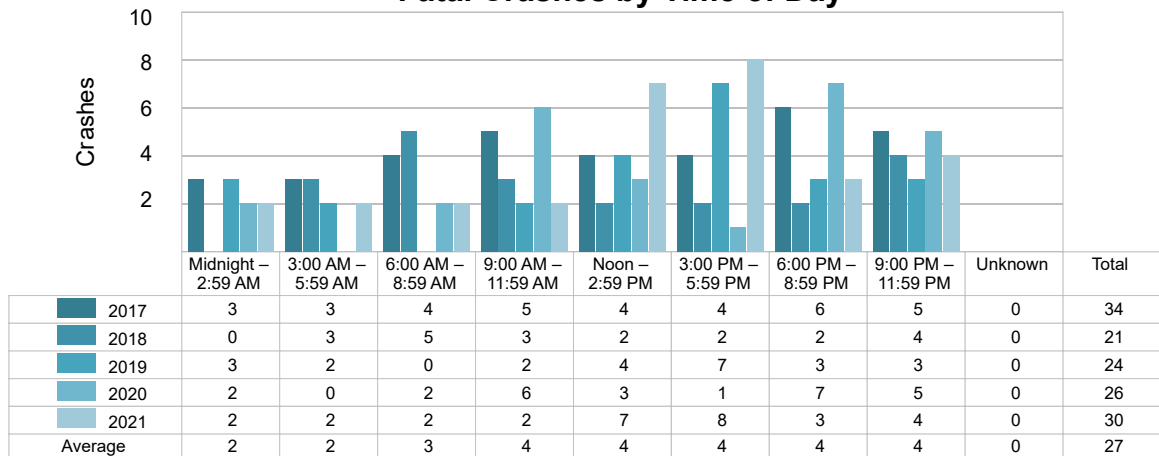
5-Year Trend - Crashes by Time of Day

Time of Day	2017		2018		2019		2020		2021	
	Total Crashes	Fatal Crashes	Total Crashes	Fatal Crashes	Total Crashes	Fatal Crashes	Total Crashes	Fatal Crashes	Total Crashes	Fatal Crashes
Midnight – 2:59 AM	275	3	305	0	316	3	270	2	266	2
3:00 AM – 5:59 AM	462	3	468	3	461	2	387	0	379	2
6:00 AM – 8:59 AM	992	4	1,093	5	1,135	0	851	2	870	2
9:00 AM – 11:59 AM	556	5	513	3	541	2	418	6	540	2
Noon – 2:59 PM	625	4	633	2	692	4	580	3	664	7
3:00 PM – 5:59 PM	888	4	835	2	921	7	752	1	869	8
6:00 PM – 8:59 PM	1,040	6	1,066	2	1,055	3	948	7	986	3
9:00 PM – 11:59 PM	714	5	668	4	701	3	582	5	648	4
Unknown	4	0	2	0	3	0	1	0	1	0
Total	5,556	34	5,583	21	5,825	24	4,789	26	5,223	30

5-Year Trend Crashes by Time of Day

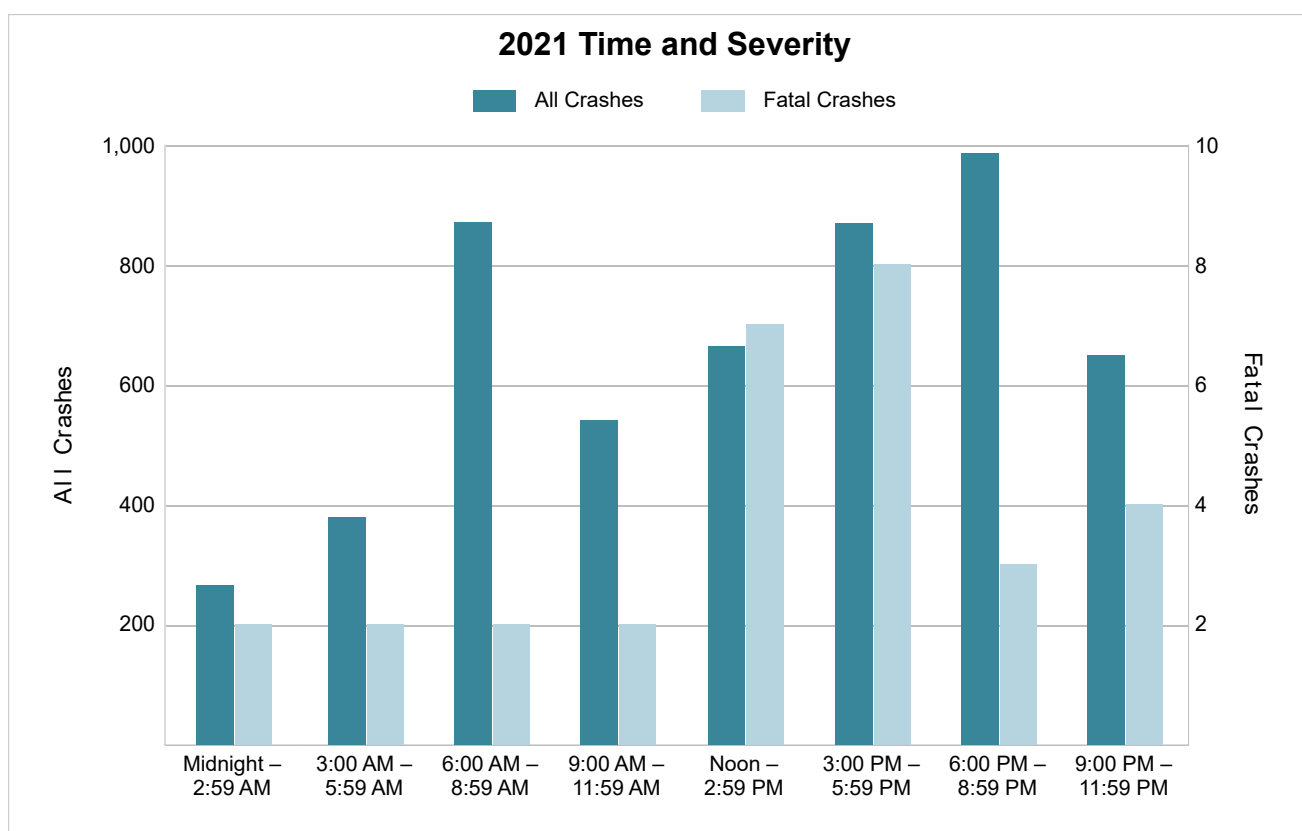


5-Year Trend Fatal Crashes by Time of Day



2021 - Time and Severity

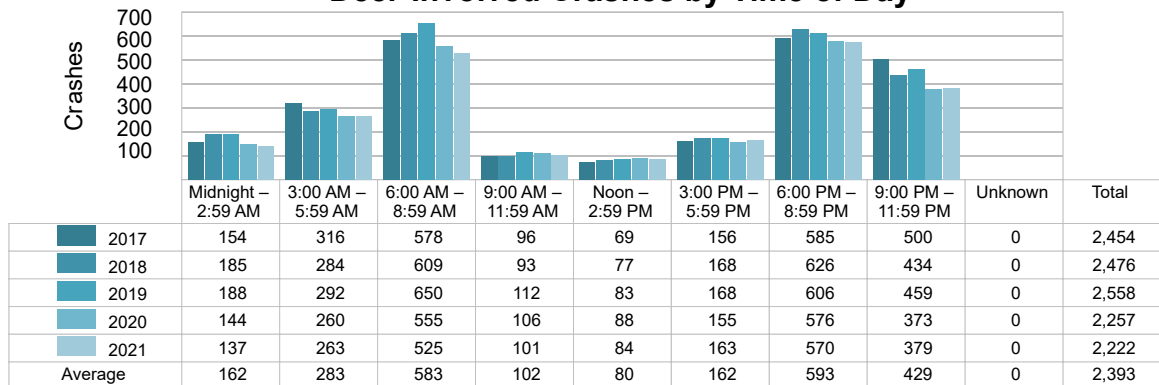
Time of Day	All Crashes		Fatal Crashes		Injury Crashes			PDO Crashes
	Number	% of Total	Number	% of Fatal	A	B	C	Number
Midnight – 2:59 AM	266	5.1	2	6.7	8	13	15	228
3:00 AM – 5:59 AM	379	7.3	2	6.7	5	15	14	343
6:00 AM – 8:59 AM	870	16.7	2	6.7	10	17	47	794
9:00 AM – 11:59 AM	540	10.3	2	6.7	16	22	52	448
Noon – 2:59 PM	664	12.7	7	23.3	18	44	67	528
3:00 PM – 5:59 PM	869	16.6	8	26.7	20	69	86	686
6:00 PM – 8:59 PM	986	18.9	3	10.0	27	38	50	868
9:00 PM – 11:59 PM	648	12.4	4	13.3	13	20	39	572
Unknown	1	0.0	0	0.0	0	0	0	1
Total	5,223	100.0	30	100.0	117	238	370	4,468



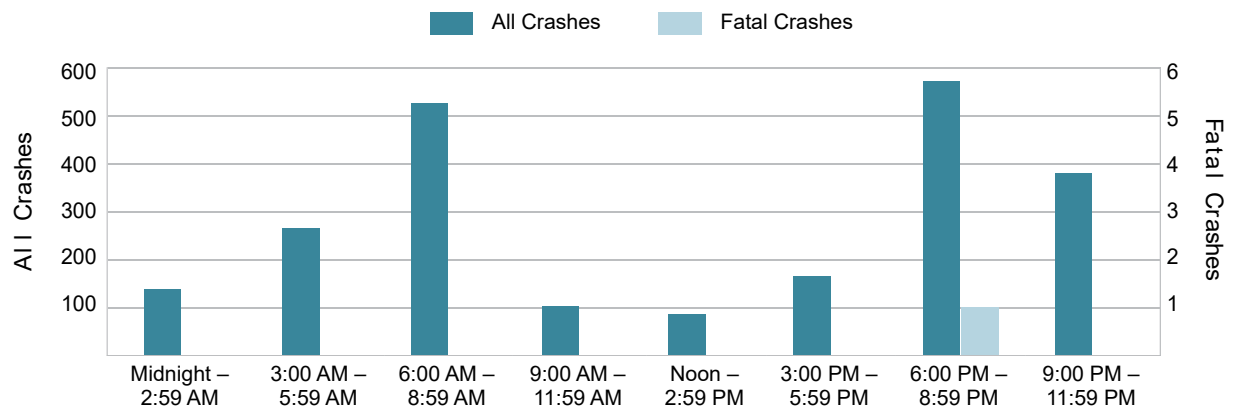
5-Year Trend - Deer-Involved Crashes by Time of Day

Time of Day	2017		2018		2019		2020		2021	
	Total Crashes	Fatal Crashes	Total Crashes	Fatal Crashes	Total Crashes	Fatal Crashes	Total Crashes	Fatal Crashes	Total Crashes	Fatal Crashes
Midnight – 2:59 AM	154	0	185	0	188	0	144	0	137	0
3:00 AM – 5:59 AM	316	0	284	0	292	0	260	0	263	0
6:00 AM – 8:59 AM	578	0	609	1	650	0	555	0	525	0
9:00 AM – 11:59 AM	96	0	93	0	112	0	106	0	101	0
Noon – 2:59 PM	69	0	77	0	83	0	88	0	84	0
3:00 PM – 5:59 PM	156	0	168	0	168	0	155	0	163	0
6:00 PM – 8:59 PM	585	0	626	0	606	0	576	0	570	1
9:00 PM – 11:59 PM	500	0	434	0	459	0	373	0	379	0
Unknown	0	0	0	0	0	0	0	0	0	0
Total	2,454	0	2,476	1	2,558	0	2,257	0	2,222	1

5-Year Trend Deer-Involved Crashes by Time of Day

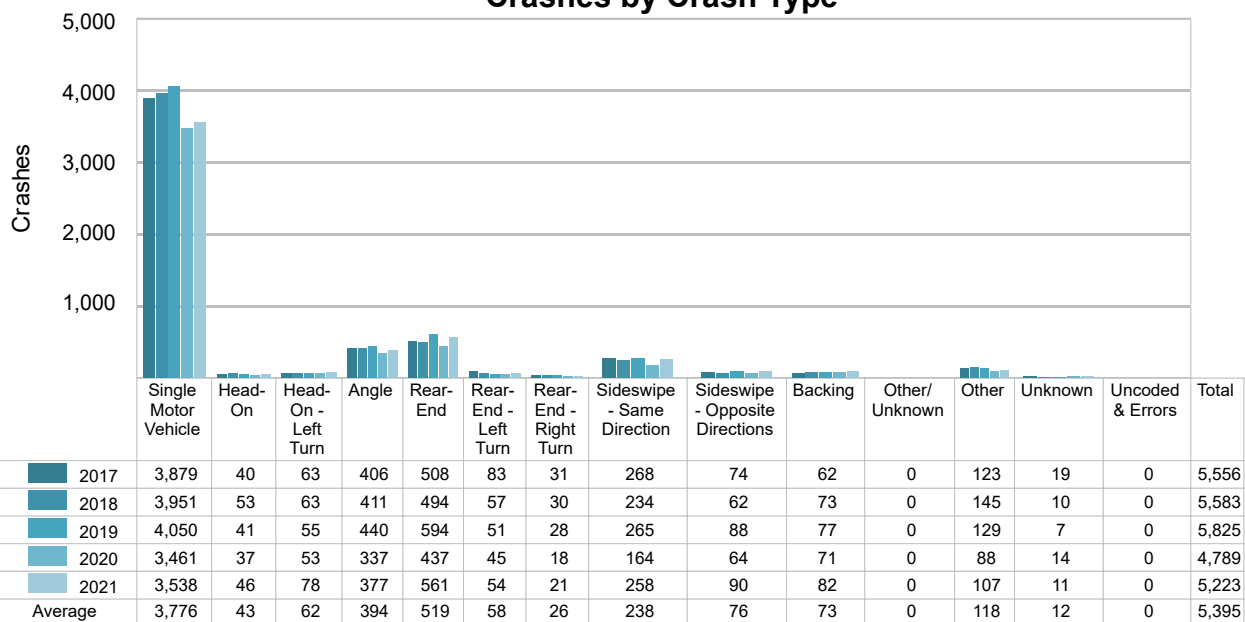


2021 Time and Severity of Deer-Involved Crashes



5-Year Trend - Crashes by Crash Type

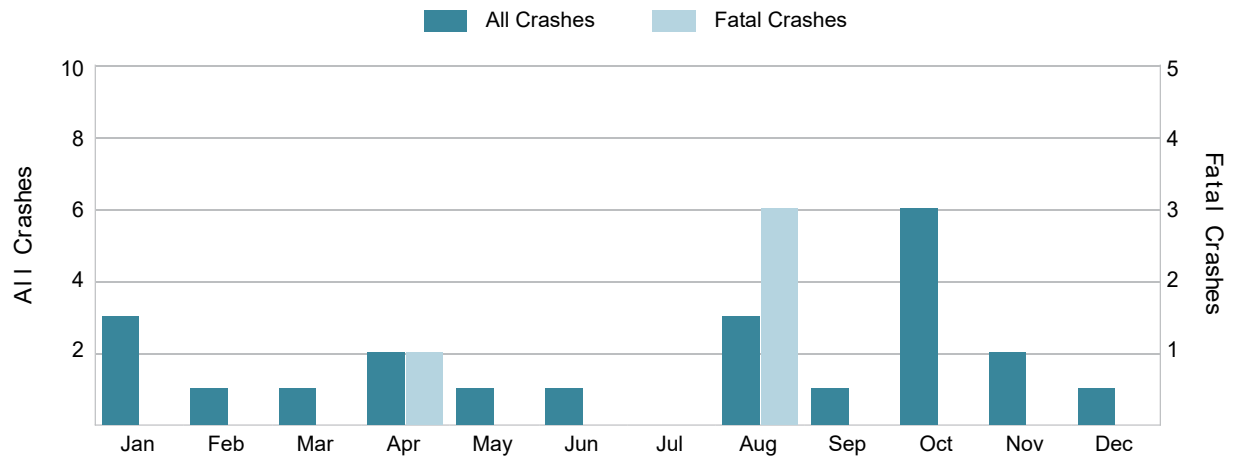
Crash Type	2017		2018		2019		2020		2021	
	Total Crashes	Fatal Crashes	Total Crashes	Fatal Crashes	Total Crashes	Fatal Crashes	Total Crashes	Fatal Crashes	Total Crashes	Fatal Crashes
Single Motor Vehicle	3,879	20	3,951	10	4,050	11	3,461	11	3,538	19
Head-On	40	1	53	7	41	6	37	5	46	2
Head-On - Left Turn	63	2	63	0	55	0	53	0	78	1
Angle	406	5	411	3	440	0	337	5	377	5
Rear-End	508	2	494	1	594	3	437	4	561	3
Rear-End - Left Turn	83	1	57	0	51	0	45	1	54	0
Rear-End - Right Turn	31	0	30	0	28	0	18	0	21	0
Sideswipe - Same Direction	268	0	234	0	265	0	164	0	258	0
Sideswipe - Opposite Directions	74	1	62	0	88	1	64	0	90	0
Backing	62	0	73	0	77	0	71	0	82	0
Other/Unknown	0	0	0	0	0	0	0	0	0	0
Other	123	2	145	0	129	3	88	0	107	0
Unknown	19	0	10	0	7	0	14	0	11	0
Uncoded & Errors	0	0	0	0	0	0	0	0	0	0
Total	5,556	34	5,583	21	5,825	24	4,789	26	5,223	30

5-Year Trend
Crashes by Crash Type

5-Year Trend - Pedestrian-Involved Crashes by Month

Month	2017		2018		2019		2020		2021	
	Total Crashes	Fatal Crashes	Total Crashes	Fatal Crashes	Total Crashes	Fatal Crashes	Total Crashes	Fatal Crashes	Total Crashes	Fatal Crashes
January	1	0	2	0	1	0	0	0	3	0
February	1	0	3	1	0	0	0	0	1	0
March	3	1	1	0	2	0	0	0	1	0
April	0	0	0	0	2	0	1	0	2	1
May	2	1	1	0	1	0	0	0	1	0
June	4	1	2	0	0	0	1	0	1	0
July	3	0	2	1	3	0	2	0	0	0
August	1	0	1	0	3	0	4	1	3	3
September	1	0	1	0	0	0	4	0	1	0
October	4	1	4	0	4	0	3	0	6	0
November	1	1	0	0	2	0	4	1	2	0
December	2	0	1	1	2	0	2	0	1	0
Total	23	5	18	3	20	0	21	2	22	4

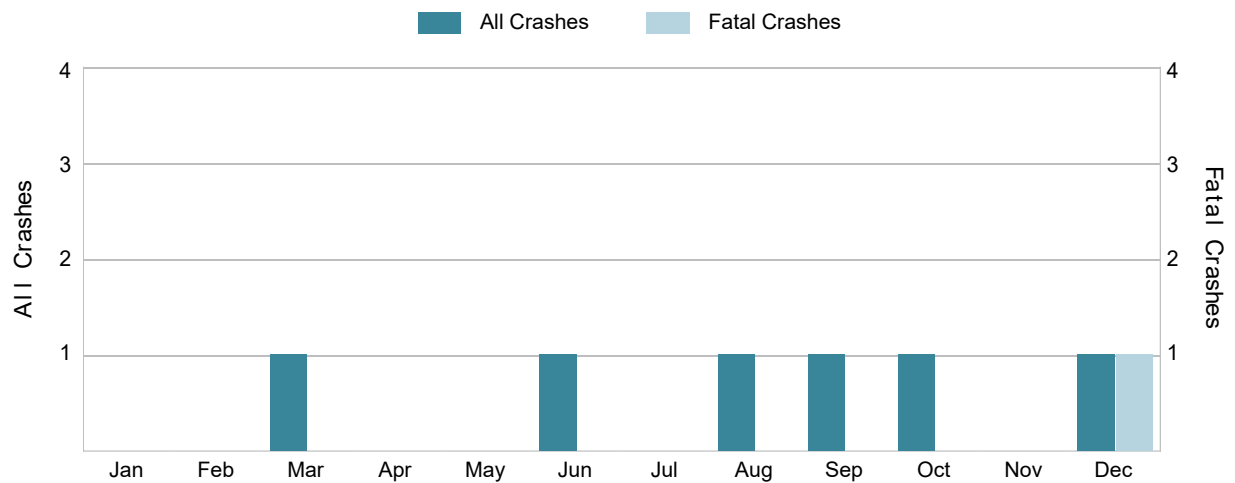
2021 Pedestrian-Involved Crashes by Month



5-Year Trend - Bicyclist-Involved Crashes by Month

Month	2017		2018		2019		2020		2021	
	Total Crashes	Fatal Crashes	Total Crashes	Fatal Crashes	Total Crashes	Fatal Crashes	Total Crashes	Fatal Crashes	Total Crashes	Fatal Crashes
January	0	0	1	0	0	0	0	0	0	0
February	1	0	0	0	0	0	0	0	0	0
March	1	0	0	0	2	0	0	0	1	0
April	1	0	0	0	0	0	1	0	0	0
May	0	0	3	0	1	0	0	0	0	0
June	4	0	1	0	1	0	1	0	1	0
July	4	0	1	0	3	0	1	0	0	0
August	2	1	3	0	3	0	1	0	1	0
September	2	0	0	0	5	0	1	0	1	0
October	0	0	0	0	0	0	0	0	1	0
November	0	0	0	0	1	0	0	0	0	0
December	0	0	0	0	0	0	0	0	1	1
Total	15	1	9	0	16	0	5	0	6	1

2021 Bicyclist-Involved Crashes by Month



2021 - Reported Motor Vehicle Crashes by County

County	Crashes												
	Total	Fatal	Injury	Property Damage	Inter-State	US Route	State Route	Local Street	Alcohol-Involved	Drug-Involved	Deer-Involved	Pedestrian-Involved	Bicyclist-Involved
Gratiot	1,606	5	158	1,443	0	408	282	913	26	15	931	6	3
Ionia	1,740	12	270	1,458	364	0	539	836	57	19	533	9	0
Montcalm	1,877	13	297	1,567	0	137	683	1,054	66	30	758	7	3
Total	5,223	30	725	4,468	364	545	1,504	2,803	149	64	2,222	22	6

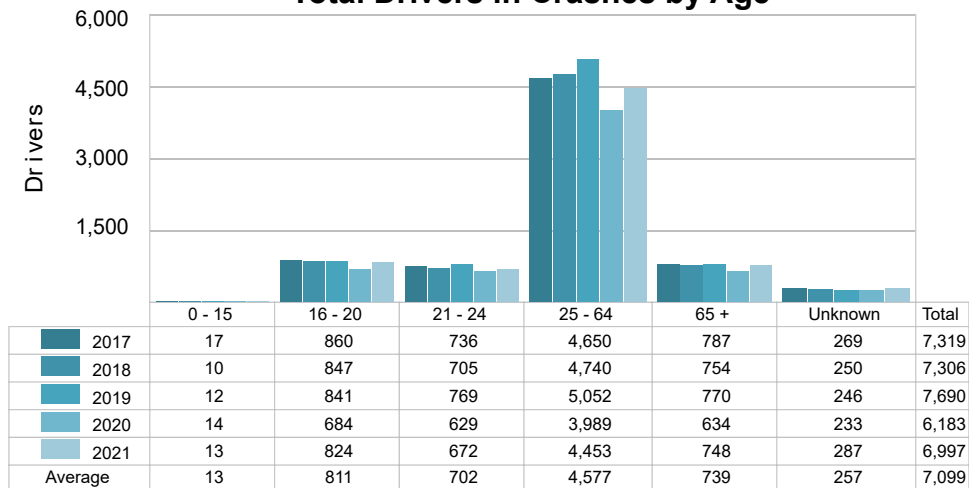
2021 - People in Reported Motor Vehicle Crashes by County

County	People					
	Fatalities	Suspected Serious Injuries	Suspected Minor Injuries	Possible Injuries	No Injuries	Uncoded & Errors
Gratiot	5	61	135	173	2,244	57
Ionia	13	84	192	340	2,471	142
Montcalm	13	104	220	371	2,650	87
Total	31	249	547	884	7,365	286

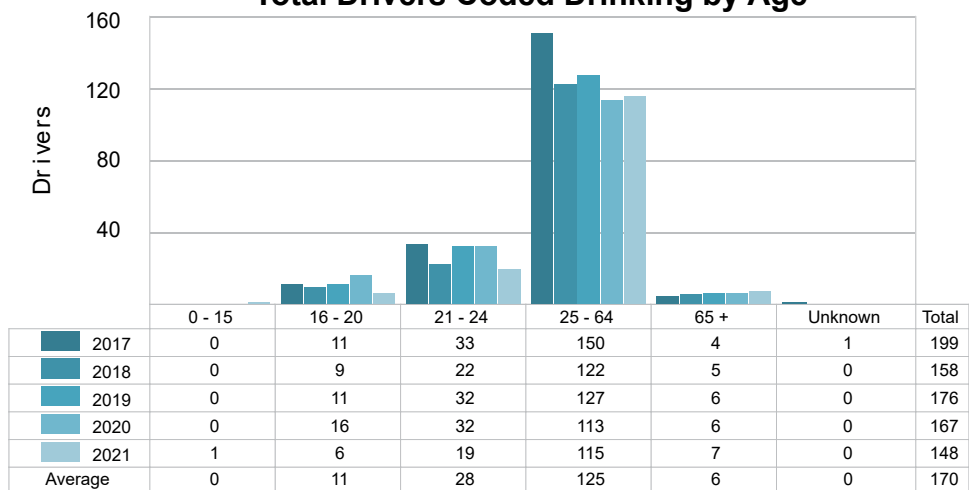
5-Year Trend - Drivers in Crashes Coded Drinking by Driver Age

Driver Age	2017		2018		2019		2020		2021	
	Total Drivers in Crashes	Total Drivers Coded Drinking	Total Drivers in Crashes	Total Drivers Coded Drinking	Total Drivers in Crashes	Total Drivers Coded Drinking	Total Drivers in Crashes	Total Drivers Coded Drinking	Total Drivers in Crashes	Total Drivers Coded Drinking
0 - 15	17	0	10	0	12	0	14	0	13	1
16 - 20	860	11	847	9	841	11	684	16	824	6
21 - 24	736	33	705	22	769	32	629	32	672	19
25 - 64	4,650	150	4,740	122	5,052	127	3,989	113	4,453	115
65 +	787	4	754	5	770	6	634	6	748	7
Unknown	269	1	250	0	246	0	233	0	287	0
Total	7,319	199	7,306	158	7,690	176	6,183	167	6,997	148

5-Year Trend Total Drivers in Crashes by Age



5-Year Trend Total Drivers Coded Drinking by Age



2021 - Bodily Alcohol Concentration (BAC) Results Among All Vehicle Drivers in Alcohol-Involved Crashes by Age

Age Group	Drivers				BAC Result Range for Drivers Coded Drinking				
	Total Drivers in Alcohol-Involved Crashes	Total Drivers Tested in all Crashes	Total Drivers Coded Drinking, Tested	Total Drivers Coded Drinking	BAC = 0.00	BAC 0.01 g/dL to 0.07 g/dL	BAC 0.08 g/dL to 0.16 g/dL	BAC 0.17 g/dL and Above	BAC Not Reported
0 - 15	1	1	1	1	0	0	0	0	1
16 - 20	9	13	6	6	0	0	4	1	1
21 - 24	21	23	18	19	0	0	9	4	6
25 - 64	140	134	86	115	0	9	22	33	51
65 +	12	9	5	7	0	1	3	2	1
Unknown	3	0	0	0	0	0	0	0	0
Total	186	180	116	148	0	10	38	40	60

Notes: BAC measured in grams (g) per deciliter (dL).

BAC may not be reported if drivers are not tested or if the results are not available immediately (as in the case of a blood test).

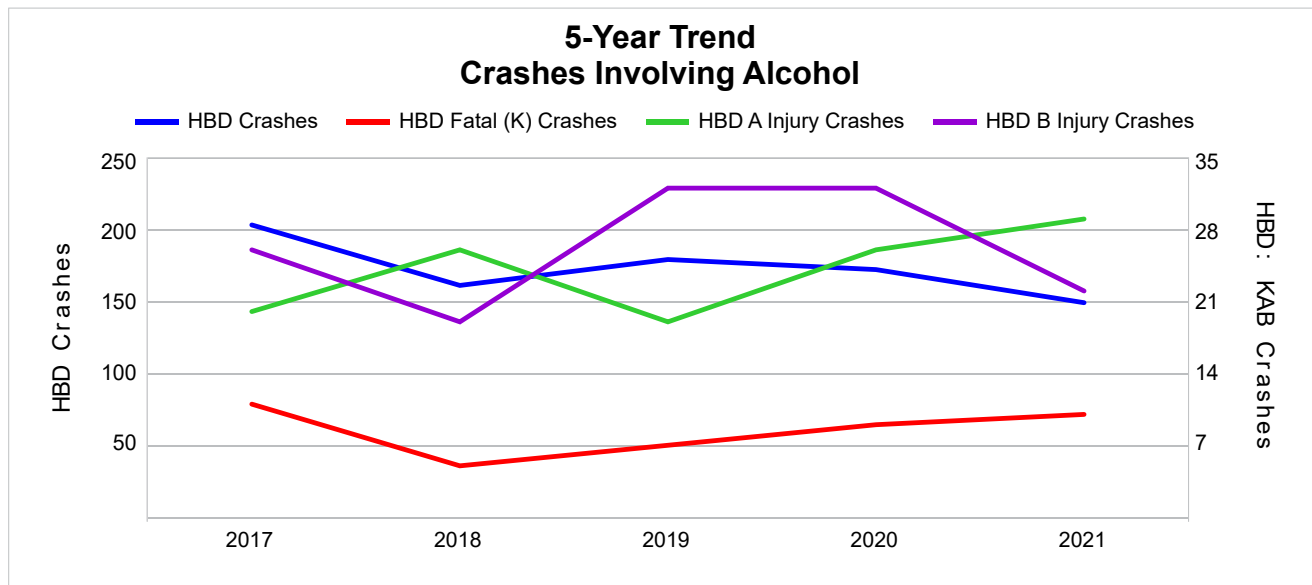
A driver may be coded by the officer as drinking even though no test is administered.

5-Year Trend - Crashes Involving Alcohol

Year	All Crashes	HBD Crashes	% HBD	Fatal Crashes	HBD Fatal Crashes	% HBD	A Injury Crashes	HBD A Injury Crashes	% HBD	B Injury Crashes	HBD B Injury Crashes	% HBD
2017	5,556	203	3.7	34	11	32.4	124	20	16.1	252	26	10.3
2018	5,583	161	2.9	21	5	23.8	124	26	21.0	241	19	7.9
2019	5,825	179	3.1	24	7	29.2	114	19	16.7	208	32	15.4
2020	4,789	172	3.6	26	9	34.6	104	26	25.0	222	32	14.4
2021	5,223	149 *	2.9 *	30	10	33.3	117	29 **	24.8	238	22	9.2

Note: * Indicates that the most recent year is the lowest number or percentage reported in the 5-year period in that column.

** Indicates that the most recent year is the highest number or percentage reported in the 5-year period in that column.



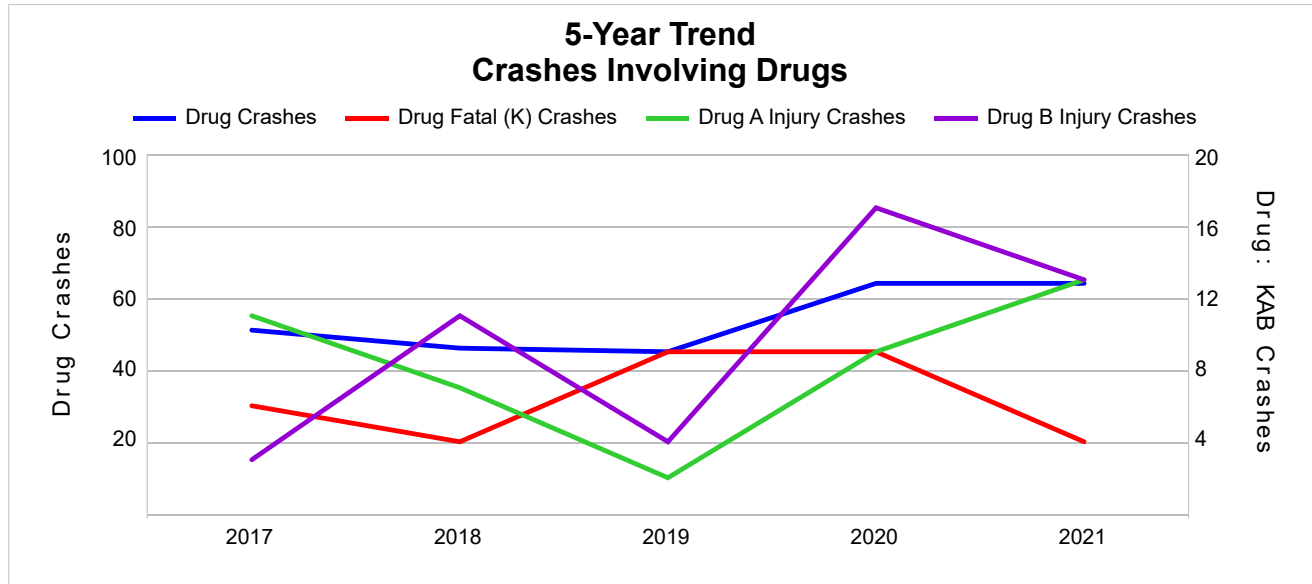
Note: Had-Been-Drinking (HBD)

5-Year Trend - Crashes Involving Drugs

Year	All Crashes	Drug Crashes	% Drug	Fatal Crashes	Drug Fatal Crashes	% Drug	A Injury Crashes	Drug A Injury Crashes	% Drug	B Injury Crashes	Drug B Injury Crashes	% Drug
2017	5,556	51	0.9	34	6	17.6	124	11	8.9	252	3	1.2
2018	5,583	46	0.8	21	4	19.0	124	7	5.6	241	11	4.6
2019	5,825	45	0.8	24	9	37.5	114	2	1.8	208	4	1.9
2020	4,789	64	1.3	26	9	34.6	104	9	8.7	222	17	7.7
2021	5,223	64	1.2	30	4	13.3 *	117	13 **	11.1 **	238	13	5.5

Note: * Indicates that the most recent year is the lowest number or percentage reported in the 5-year period in that column.

** Indicates that the most recent year is the highest number or percentage reported in the 5-year period in that column.

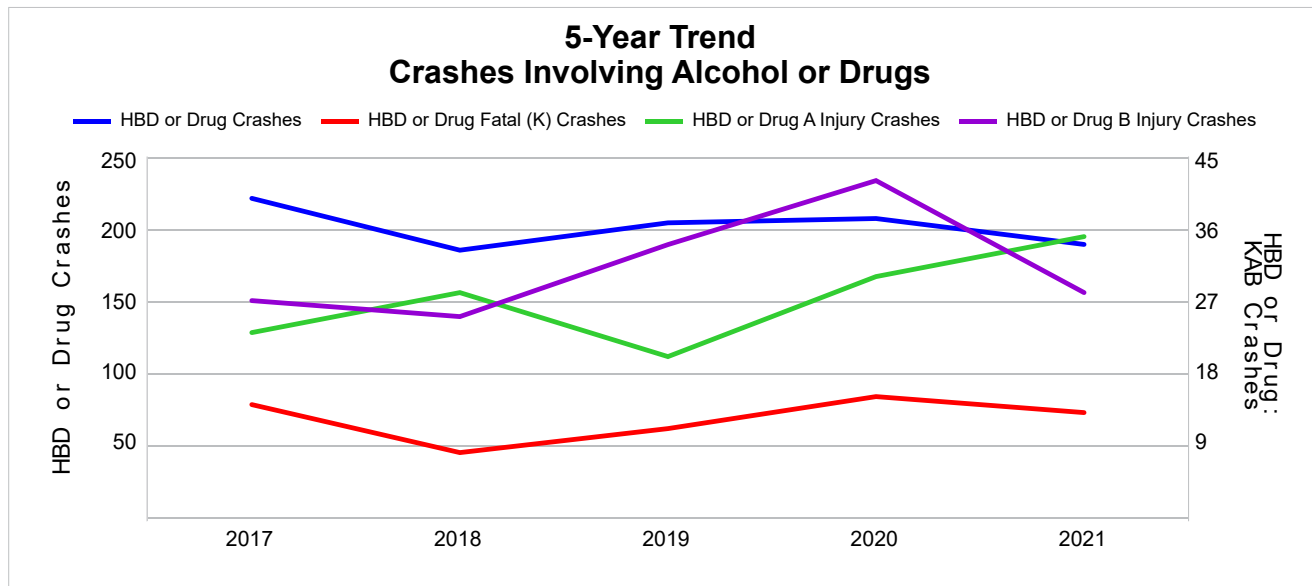


5-Year Trend - Crashes Involving Alcohol or Drugs

Year	All Crashes	HBD or Drug Crashes	% HBD or Drug	Fatal Crashes	HBD or Drug Fatal Crashes	% HBD or Drug	A Injury Crashes	HBD or Drug A Injury Crashes	% HBD or Drug	B Injury Crashes	HBD or Drug B Injury Crashes	% HBD or Drug
2017	5,556	221	4.0	34	14	41.2	124	23	18.5	252	27	10.7
2018	5,583	185	3.3	21	8	38.1	124	28	22.6	241	25	10.4
2019	5,825	204	3.5	24	11	45.8	114	20	17.5	208	34	16.3
2020	4,789	207	4.3	26	15	57.7	104	30	28.8	222	42	18.9
2021	5,223	189	3.6	30	13	43.3	117	35 **	29.9 **	238	28	11.8

Note: * Indicates that the most recent year is the lowest number or percentage reported in the 5-year period in that column.

** Indicates that the most recent year is the highest number or percentage reported in the 5-year period in that column.



Note: Had-Been-Drinking (HBD)

2021 - Restraints Worn Among Vehicle Drivers and Injured Passengers by Vehicle Type

Vehicle Type	Total Occupants			Fatalities			A - Suspected Serious			B - Suspected Minor			C - Possible Injury			No Injury		
	Total	Used Restraint	%	Total	Used Restraint	%	Total	Used Restraint	%	Total	Used Restraint	%	Total	Used Restraint	%	Total	Used Restraint	%
Passenger Car, SUV, Van	5,260	4,929	93.7	17	10	58.8	69	49	71.0	225	215	95.6	445	417	93.7	4,381	4,238	96.7
Motor Home	23	23	100.0	0	0	0.0	0	0	0.0	0	0	0.0	2	2	100.0	21	21	100.0
Pickup Truck	1,442	1,320	91.5	4	1	25.0	25	11	44.0	36	32	88.9	68	56	82.4	1,270	1,220	96.1
Small Truck Under 10,000 lbs. GVWR	34	32	94.1	0	0	0.0	0	0	0.0	1	0	0.0	2	2	100.0	30	30	100.0
Motorcycle	82	49	59.8	3	2	66.7	23	11	47.8	30	19	63.3	9	5	55.6	16	12	75.0
Moped/Goped	8	3	37.5	0	0	0.0	3	1	33.3	1	0	0.0	2	1	50.0	2	1	50.0
Go-Cart/Golf Cart	1	0	0.0	0	0	0.0	0	0	0.0	1	0	0.0	0	0	0.0	0	0	0.0
Snowmobile	2	2	100.0	0	0	0.0	1	1	100.0	0	0	0.0	0	0	0.0	1	1	100.0
Off-Road Vehicle (ORV)/All-Terrain Vehicle (ATV)	8	1	12.5	0	0	0.0	3	0	0.0	1	1	100.0	0	0	0.0	4	0	0.0
Other (non-registered farm equipment, construction equipment, snow plows, etc.)	42	25	59.5	2	0	0.0	2	1	50.0	0	0	0.0	0	0	0.0	36	24	66.7
Truck/Bus (over 10,000 lbs. GVWR/8+ occupants/hazmat placard)	229	215	93.9	0	0	0.0	3	3	100.0	5	5	100.0	13	13	100.0	199	194	97.5
Uncoded & Errors	114	0	0.0	0	0	0.0	0	0	0.0	0	0	0.0	0	0	0.0	3	0	0.0
Total	7,245	6,599	91.1	26	13	50.0	129	77	59.7	300	272	90.7	541	496	91.7	5,963	5,741	96.3

Note: Restraint Use includes shoulder belt only used, lap belt only used, both lap and shoulder belts used, child restraint used, restraint failure, and helmet worn.

2021 - Restraints Worn Among Vehicle Drivers and Injured Passengers by Age

Age Group	Total Occupants			Fatalities			A - Suspected Serious			B - Suspected Minor			C - Possible Injury			No Injury		
	Total	Used Restraint	%	Total	Used Restraint	%	Total	Used Restraint	%	Total	Used Restraint	%	Total	Used Restraint	%	Total	Used Restraint	%
0 - 15	77	68	88.3	0	0	0.0	7	5	71.4	18	16	88.9	44	40	90.9	7	7	100.0
16 - 20	872	834	95.6	2	1	50.0	16	8	50.0	45	41	91.1	94	85	90.4	713	699	98.0
21 - 24	695	666	95.8	1	1	100.0	14	12	85.7	34	31	91.2	64	59	92.2	581	563	96.9
25 - 64	4,542	4,283	94.3	17	7	41.2	78	40	51.3	167	151	90.4	292	267	91.4	3,976	3,818	96.0
65 +	772	748	96.9	6	4	66.7	14	12	85.7	36	33	91.7	47	45	95.7	667	654	98.1
Unknown	287	0	0.0	0	0	0.0	0	0	0.0	0	0	0.0	0	0	0.0	19	0	0.0
Total	7,245	6,599	91.1	26	13	50.0	129	77	59.7	300	272	90.7	541	496	91.7	5,963	5,741	96.3

Note: Restraint Use includes shoulder belt only used, lap belt only used, both lap and shoulder belts used, child restraint used, restraint failure, and helmet worn.

5-Year Trend - Restraint Use Among Drivers

Restraint Use	2017			2018			2019			2020			2021		
	Drivers	Fatal Drivers	Injured Drivers	Drivers	Fatal Drivers	Injured Drivers	Drivers	Fatal Drivers	Injured Drivers	Drivers	Fatal Drivers	Injured Drivers	Drivers	Fatal Drivers	Injured Drivers
No Belts Available	10	0	1	12	0	2	18	1	1	24	0	7	23	1	5
Shoulder Belt Only Used	21	0	0	37	0	4	31	0	3	33	0	5	29	0	4
Lap Belt Only Used	19	0	1	24	0	3	17	0	0	12	0	0	14	0	2
Both Lap & Shoulder Belt Used	6,705	11	670	6,714	11	683	7,065	10	619	5,571	9	479	6,287	8	590
No Belts Used	56	4	27	52	2	33	47	2	27	63	8	36	72	9	37
Child Restraint Used - Forward Facing	0	0	0	0	0	0	0	0	0	0	0	0	0	0	0
Child Restraint Not Used, Unavailable or Improper Use	0	0	0	0	0	0	0	0	0	0	0	0	0	0	0
Child Restraint Used - Rear Facing	0	0	0	0	0	0	0	0	0	0	0	0	0	0	0
Child Restraint Used - Booster Seat	0	0	0	0	0	0	0	0	0	0	0	0	0	0	0
Restraint Failure	2	0	0	1	0	0	2	0	1	1	0	0	1	0	0
Restraint Use Unknown	439	3	26	403	1	23	446	2	17	399	0	28	482	1	24
Helmet Worn	27	0	21	28	0	27	28	0	20	44	2	27	52	2	36
Helmet Not Worn	30	7	19	27	1	21	29	3	21	33	1	30	34	1	27
Helmet Use Unknown	3	0	2	0	0	0	3	0	2	2	0	0	2	0	1
Uncoded & Errors	7	0	0	8	0	0	4	0	0	1	0	0	1	0	0
Total	7,319	25	767	7,306	15	796	7,690	18	711	6,183	20	612	6,997	22	726

5-Year Trend - Restraint Use Among Drivers Coded Drinking

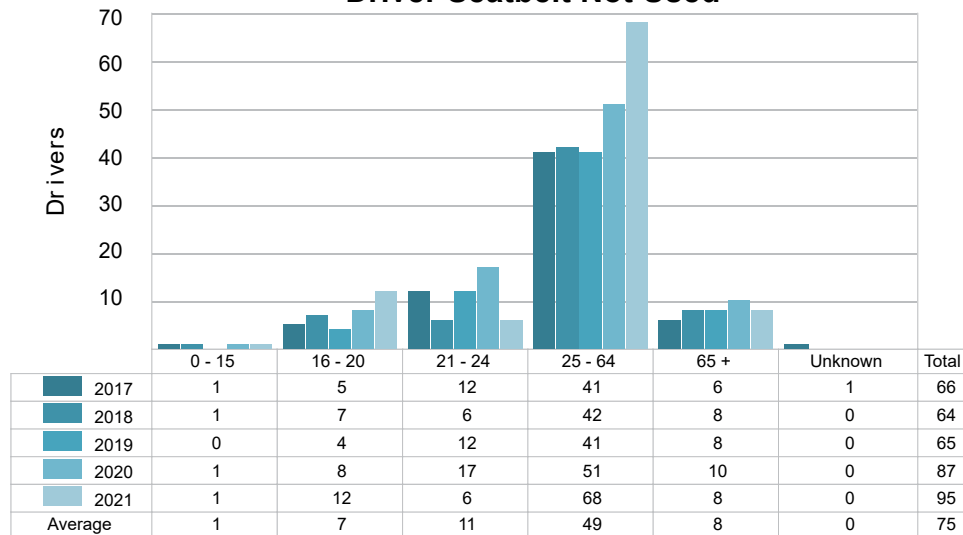
Restraint Use	2017			2018			2019			2020			2021		
	Drivers	Fatal Drivers	Injured Drivers	Drivers	Fatal Drivers	Injured Drivers	Drivers	Fatal Drivers	Injured Drivers	Drivers	Fatal Drivers	Injured Drivers	Drivers	Fatal Drivers	Injured Drivers
No Belts Available	1	0	0	0	0	0	0	0	0	2	0	2	0	0	0
Shoulder Belt Only Used	0	0	0	1	0	0	0	0	0	2	0	1	0	0	0
Lap Belt Only Used	0	0	0	1	0	0	0	0	0	0	0	0	0	0	0
Both Lap & Shoulder Belt Used	131	1	29	112	1	32	118	1	26	106	1	32	94	3	33
No Belts Used	16	3	8	9	1	7	15	2	13	20	2	15	18	4	12
Child Restraint Used - Forward Facing	0	0	0	0	0	0	0	0	0	0	0	0	0	0	0
Child Restraint Not Used, Unavailable or Improper Use	0	0	0	0	0	0	0	0	0	0	0	0	0	0	0
Child Restraint Used - Rear Facing	0	0	0	0	0	0	0	0	0	0	0	0	0	0	0
Child Restraint Used - Booster Seat	0	0	0	0	0	0	0	0	0	0	0	0	0	0	0
Restraint Failure	0	0	0	0	0	0	0	0	0	1	0	0	0	0	0
Restraint Use Unknown	47	1	13	26	0	10	31	1	8	31	0	11	28	0	11
Helmet Worn	0	0	0	2	0	2	2	0	1	0	0	0	5	0	4
Helmet Not Worn	4	2	2	6	0	6	10	3	7	4	0	4	3	0	1
Helmet Use Unknown	0	0	0	0	0	0	0	0	0	1	0	0	0	0	0
Uncoded & Errors	0	0	0	1	0	0	0	0	0	0	0	0	0	0	0
Total	199	7	52	158	2	57	176	7	55	167	3	65	148	7	61

5-Year Trend - Seatbelt Not Used Among Drivers by Age

Age Group	2017			2018			2019			2020			2021		
	Drivers	Fatal Drivers	Injured Drivers	Drivers	Fatal Drivers	Injured Drivers	Drivers	Fatal Drivers	Injured Drivers	Drivers	Fatal Drivers	Injured Drivers	Drivers	Fatal Drivers	Injured Drivers
0 - 15	1	0	1	1	0	0	0	0	0	1	0	0	1	0	1
16 - 20	5	0	3	7	0	5	4	0	3	8	0	4	12	1	7
21 - 24	12	1	5	6	1	4	12	1	5	17	2	11	6	0	3
25 - 64	41	3	16	42	1	25	41	2	16	51	4	24	68	8	29
65 +	6	0	3	8	0	1	8	0	4	10	2	4	8	1	2
Unknown	1	0	0	0	0	0	0	0	0	0	0	0	0	0	0
Total	66	4	28	64	2	35	65	3	28	87	8	43	95	10	42

Note: Seatbelt Not Used includes no belts available or no belts used.

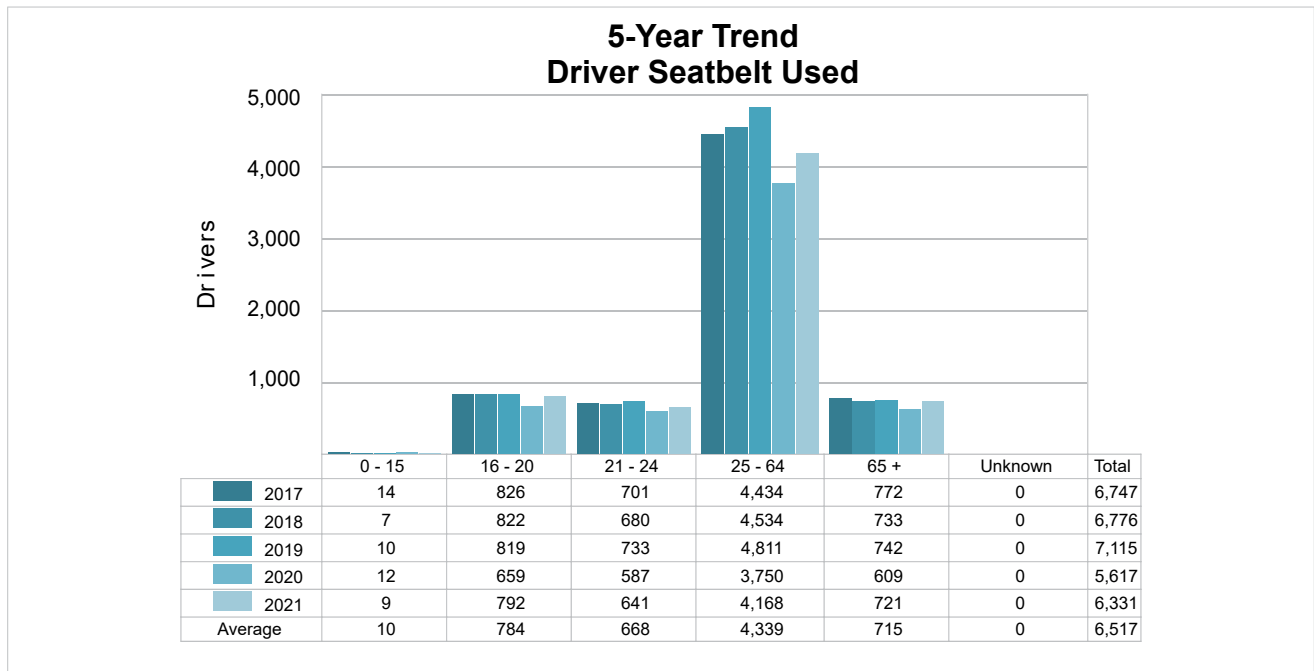
5-Year Trend Driver Seatbelt Not Used



5-Year Trend - Seatbelt Used Among Drivers by Age

Age Group	2017			2018			2019			2020			2021		
	Drivers	Fatal Drivers	Injured Drivers	Drivers	Fatal Drivers	Injured Drivers	Drivers	Fatal Drivers	Injured Drivers	Drivers	Fatal Drivers	Injured Drivers	Drivers	Fatal Drivers	Injured Drivers
0 - 15	14	0	4	7	0	0	10	0	0	12	0	2	9	0	2
16 - 20	826	1	118	822	2	108	819	1	102	659	0	74	792	1	92
21 - 24	701	1	67	680	3	82	733	1	63	587	2	59	641	1	80
25 - 64	4,434	6	390	4,534	6	410	4,811	6	373	3,750	5	287	4,168	4	356
65 +	772	3	92	733	0	90	742	2	85	609	2	62	721	2	66
Unknown	0	0	0	0	0	0	0	0	0	0	0	0	0	0	0
Total	6,747	11	671	6,776	11	690	7,115	10	623	5,617	9	484	6,331	8	596

Note: Seatbelt Used includes shoulder belt only used, lap belt only used, both lap and shoulder belts used, and restraint failure.



5-Year Trend - Drivers in Crashes by Hazardous Action

Hazardous Action	2017		2018		2019		2020		2021	
	Total Drivers in Crashes	Drivers in Fatal Crashes	Total Drivers in Crashes	Drivers in Fatal Crashes	Total Drivers in Crashes	Drivers in Fatal Crashes	Total Drivers in Crashes	Drivers in Fatal Crashes	Total Drivers in Crashes	Drivers in Fatal Crashes
None	4,449	23	4,478	15	4,692	13	3,872	21	4,278	17
Speed Too Fast	799	2	827	2	859	9	592	5	665	5
Speed Too Slow	5	1	3	0	4	0	5	0	2	0
Failed to Yield	437	4	467	1	470	0	339	3	405	1
Disregard Traffic Control	62	2	57	1	58	0	62	2	76	3
Drove Wrong Way	5	0	3	0	1	0	1	0	2	0
Drove Left of Center	28	1	32	1	53	5	37	3	35	1
Improper Passing	39	0	34	1	36	0	32	0	47	0
Improper Lane Use	101	1	82	1	90	0	69	0	100	0
Improper Turn	36	0	45	0	47	0	38	0	40	0
Improper/No Signal	8	0	3	0	5	0	2	0	6	0
Improper Backing	78	0	70	0	77	0	65	0	67	0
Unable to Stop in Assured Clear Distance	575	3	513	1	629	0	454	2	583	2
Other	178	3	213	2	200	2	189	4	206	3
Unknown	198	5	179	6	177	4	133	2	175	5
Reckless Driving	47	2	24	0	23	2	37	0	53	1
Careless/Negligent Driving	261	5	269	2	266	3	256	3	257	4
Uncoded & Errors	13	0	7	0	3	0	0	0	0	0
Total	7,319	52	7,306	33	7,690	38	6,183	45	6,997	42

Office of Highway Safety Planning

Physical Address:
7150 Harris Drive
Dimondale, Michigan 48821

Mailing Address:
P.O. Box 30634
Lansing, Michigan 48909

Find us on the web:
MichiganTrafficCrashFacts.org
mtcf-info@umich.edu

