



2021

MTCF
Michigan Traffic
Crash Facts

Michigan Traffic Crash Facts

Reporting Criteria

Please pay particular attention to the wording when interpreting the three levels of data gathered for this report.

Crash

The Crash Level analyzes data related to crash events and returns one result per crash.

Examples: Time, weather, and location.

Units

The Units Level analyzes the experience of the units in the crash and returns one result per vehicle, driver, pedestrian, bicyclist, or train.

Examples: Vehicle type, driver condition, and unit events.

People

The People Level analyzes the experience of the people involved in the crash and returns one result per occupant/person/party.

Examples: Age, injury severity, and seat belt or helmet use.

KABCO Injury Indicator:

K = Killed

A = Suspected Serious Injury

B = Suspected Minor Injury

C = Possible Injury

O = No Injury

Property Damage Only (PDO)



Michigan State Police (MSP) Post 62 - Hart

2021 Traffic Crash Data & 2017-2021 5-Year Trends

MSP Post 62 - Hart is comprised of Lake, Mason, Newaygo and Oceana counties. Trend tables for this report are based on those counties.



Sources:

The crashes in this report occurred on public roadways in Michigan and resulted in injuries, fatalities, or property damage (with \$1,000 as a reporting threshold). The information was gathered from Michigan Traffic Crash Report Forms (UD-10) submitted by local police departments, sheriff's offices, and the Michigan State Police. Other related information was obtained from the departments of Transportation, State, and Community Health.

MSP Post 62 - Hart

- There were 3,919 crashes in Post 62 during 2021. [Page 1]
- A total of 14 fatalities resulted from 12 fatal crashes in 2021 in Post 62. [Page 1]
- There were 678 injuries and 481 injury crashes. [Page 1]
- There were 3,426 property damage only crashes (no fatalities or injuries). [Page 1]
- November had the highest number of crashes (481). [Pages 1-2]
- August had the highest number of fatal crashes (3) and fatalities (4). [Pages 1-2]
- July had the highest number of injury crashes (60) and injuries (90). [Page 1]
- November had the highest number of property damage only crashes (446). [Page 1]
- Of all vehicles involved in fatal crashes, 0 (0.0%) were motorcycles. [Page 1]
- Friday was the day of the week with the highest number of crashes (649) and Monday had the highest number of fatal crashes (3). [Pages 2-3]
- The 6:00 PM – 8:59 PM time period had the highest number of crashes (755). The 6:00 PM – 8:59 PM time period had the highest number of fatal crashes (5). [Pages 5-6]
- During the period from 2017 to 2021, the highest number of deer crashes occurred in 2019 (2,404). The 6:00 AM – 8:59 AM time period had the highest number of deer-involved crashes. There were 0 fatal crashes involving deer in 2021. [Page 7]
- Newaygo County (37.3%) had the highest number of crashes in Post 62 in 2021, followed by Mason County (30.4%), and Oceana County (24.4%). [Page 11]
- Mason and Newaygo County (42.9%) had the highest number of fatalities in Post 62 in 2021, followed by Newaygo County (42.9%), and Oceana County (14.3%). [Page 11]
- The highest number of drivers in crashes (5,717) occurred during 2019 and the highest number of drivers coded drinking in crashes (186) occurred during 2017 within the five year period between 2017 and 2021. [Page 12]
- A total of 151 crashes involved alcohol in 2021. [Page 13]
- Alcohol-involved fatal crashes were the highest in 2017 and 2020 during the five-year period from 2017 to 2021 at 9. [Page 13]
- A total of 52 crashes, 5 fatal crashes, and 8 suspected injury crashes involved drugs in 2021. [Page 14]
- There were 4,392 drivers wearing seatbelts and 79 drivers not wearing seatbelts in crashes in 2021. Of the 79 drivers not wearing seatbelts, 4 (5.1%) were killed and 31 (39.2%) were injured. [Pages 17-19]
- The most common hazardous action coded for drivers in 2021 in all crashes was speed too fast (435), while the most common hazardous action coded for drivers in fatal crashes was unknown (3). [Page 20]

2021 - Crashes and Injury by Month

Month	Crashes				People	
	Total	Fatal	Injury	Property Damage Only (PDO)	Fatalities	Injuries
January	309	0	44	265	0	64
February	267	1	28	238	1	46
March	218	1	18	199	2	25
April	231	0	29	202	0	38
May	253	0	38	215	0	51
June	349	1	53	295	1	81
July	329	2	60	267	2	90
August	303	3	51	249	4	65
September	365	0	51	314	0	66
October	429	1	30	398	1	39
November	481	2	33	446	2	45
December	385	1	46	338	1	68
Total	3,919	12	481	3,426	14	678

2021 - Driver Statistics

Age Group	MSP Post 62 - Hart			Driver Rates	
	2019 Population*	Licensed Drivers	Drivers in Crashes	Per 10k Population	Per 10k Licensed
0 - 15	21,852	522	12	5.5	229.9
16 - 20	6,292	4,998	534	848.7	1,068.4
21 - 24	4,702	4,433	356	757.1	803.1
25 - 64	57,657	53,657	3,211	556.9	598.4
65 +	25,941	26,168	662	255.2	253.0
Unknown	0	0	107	--	--
Total	116,444	89,778	4,882	419.3	543.8

*2021 Population of Michigan Counties (by single-year of age) not yet available from U.S. Census Bureau.

2021 - Vehicles in Crashes

Vehicle Type	Motor Vehicles		Fatal Crashes		Injury Crashes	PDO Crashes
	Number of Vehicles	% of Total	Number	% of Total	Number	Number
Passenger Car, SUV, Van	3,487	71.4	11	52.4	460	3,016
Motor Home	9	0.2	0	0.0	1	8
Pickup Truck	1,098	22.5	8	38.1	167	923
Small Truck Under 10,000 lbs. GVWR	30	0.6	0	0.0	5	25
Motorcycle	60	1.2	0	0.0	48	12
Moped/Goped	6	0.1	0	0.0	5	1
Go-Cart/Golf Cart	0	0.0	0	0.0	0	0
Snowmobile	4	0.1	0	0.0	1	3
Off-Road Vehicle (ORV)/All-Terrain Vehicle (ATV)	17	0.3	0	0.0	12	5
Other (non-registered farm equipment, construction equipment, snow plows, etc.)	28	0.6	1	4.8	6	21
Truck/Bus (over 10,000 lbs. GVWR/8+ occupants/hazmat placard)	101	2.1	1	4.8	11	89
Uncoded & Errors	42	0.9	0	0.0	1	41
Total	4,882	100.0	21	100.0	717	4,144

5-Year Trend - Crashes by Month

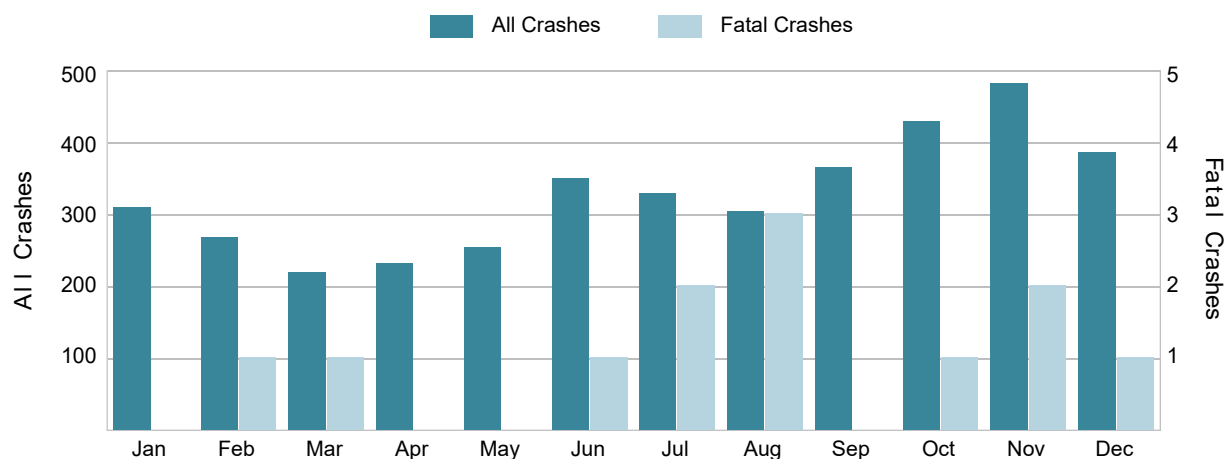
Month	2017		2018		2019		2020		2021	
	Total Crashes	Fatal Crashes	Total Crashes	Fatal Crashes	Total Crashes	Fatal Crashes	Total Crashes	Fatal Crashes	Total Crashes	Fatal Crashes
January	374	1	433	0	393	2	400	2	309	0
February	266	2	326	1	308	1	306	1	267	1
March	293	1	330	1	366	1	189	1	218	1
April	255	0	313	1	303	1	130	1	231	0
May	329	0	302	1	286	5	257	1	253	0
June	382	2	361	1	362	2	370	1	349	1
July	322	3	351	4	324	1	323	5	329	2
August	324	3	310	4	322	6	304	3	303	3
September	382	3	309	1	287	4	351	4	365	0
October	480	2	448	1	512	1	503	2	429	1
November	554 †	2	581 †	2	655 †	1	537 †	3	481 †	2
December	531	4	389	2	485	1	382	0	385	1
Total	4,492	23	4,453	19	4,603	26	4,052	24	3,919	12

Note: † Indicates that the highest number of total crashes reported in the 5-year period occurred in the same month.

5-Year Trend - Crashes by Day of Week

Day	2017		2018		2019		2020		2021	
	Total Crashes	Fatal Crashes	Total Crashes	Fatal Crashes	Total Crashes	Fatal Crashes	Total Crashes	Fatal Crashes	Total Crashes	Fatal Crashes
Monday	617	0	606	2	619	6	549	4	540	3
Tuesday	635	1	698	1	623	1	562	5	546	1
Wednesday	601	2	670	3	734	1	603	2	550	1
Thursday	662	6	623	0	677	5	565	2	560	2
Friday	723	7	675	0	744	4	652	1	649	2
Saturday	687	2	691	7	627	6	629	5	547	1
Sunday	567	5	490	6	579	3	492	5	527	2
Total	4,492	23	4,453	19	4,603	26	4,052	24	3,919	12

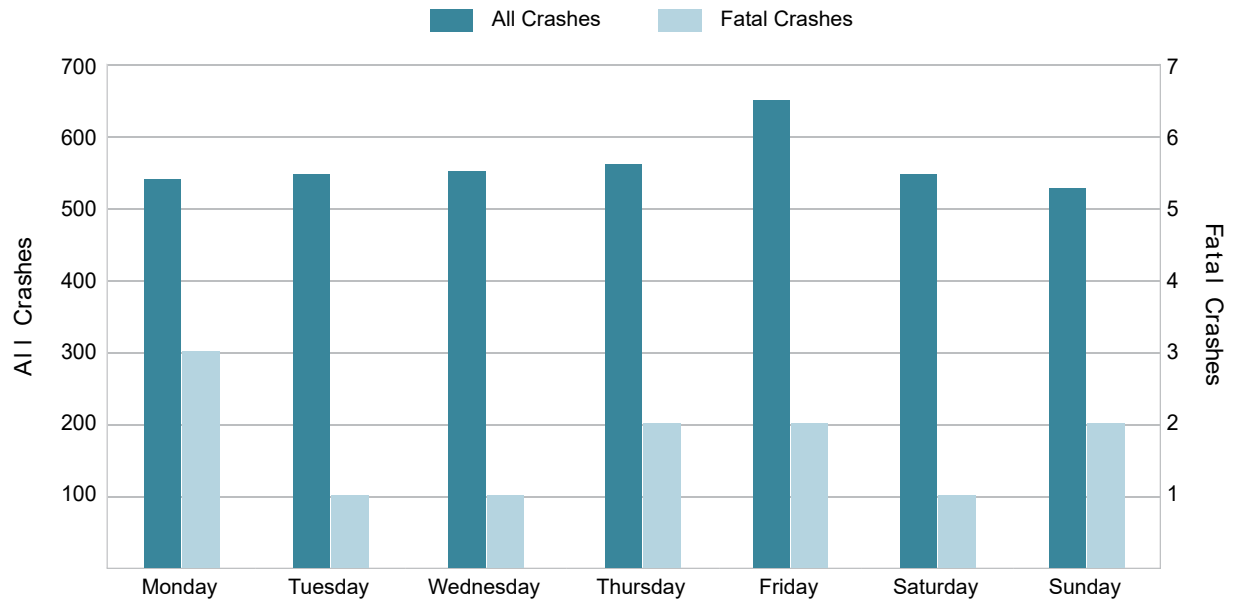
2021 Crashes by Month



2021 - Crashes by Day of Week

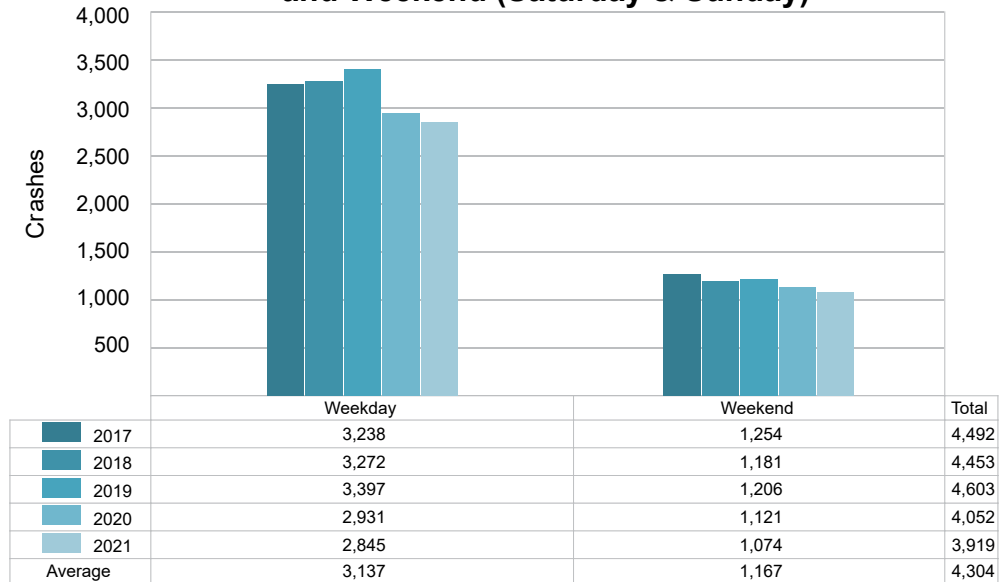
Day	All Crashes		Fatal Crashes		Injury Crashes			PDO Crashes
	Number	% of Total	Fatal	% of Fatal	A	B	C	Number
Monday	540	13.8	3	25.0	12	23	27	475
Tuesday	546	13.9	1	8.3	11	26	27	481
Wednesday	550	14.0	1	8.3	16	25	29	479
Thursday	560	14.3	2	16.7	18	28	20	492
Friday	649	16.6	2	16.7	7	35	31	574
Saturday	547	14.0	1	8.3	16	35	29	466
Sunday	527	13.4	2	16.7	15	22	29	459
Total	3,919	100.0	12	100.0	95	194	192	3,426

2021 Day of Week and Severity



5-Year Trend - Crashes by Weekday and Weekend

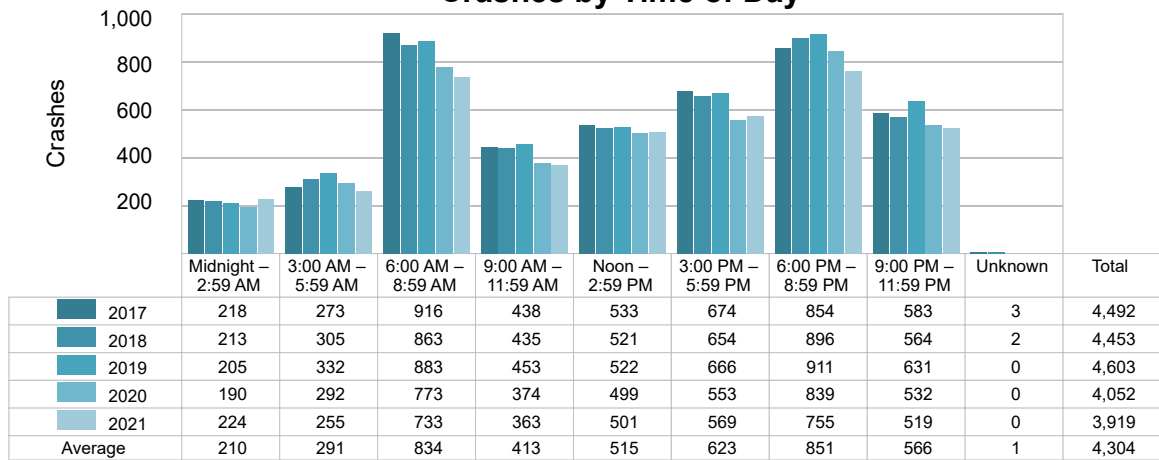
Portion of Week	2017		2018		2019		2020		2021	
	Total Crashes	Fatal Crashes	Total Crashes	Fatal Crashes	Total Crashes	Fatal Crashes	Total Crashes	Fatal Crashes	Total Crashes	Fatal Crashes
Weekday	3,238	16	3,272	6	3,397	17	2,931	14	2,845	9
Weekend	1,254	7	1,181	13	1,206	9	1,121	10	1,074	3
Total	4,492	23	4,453	19	4,603	26	4,052	24	3,919	12

5-Year Crash Trends by Weekday (Monday - Friday)
and Weekend (Saturday & Sunday)

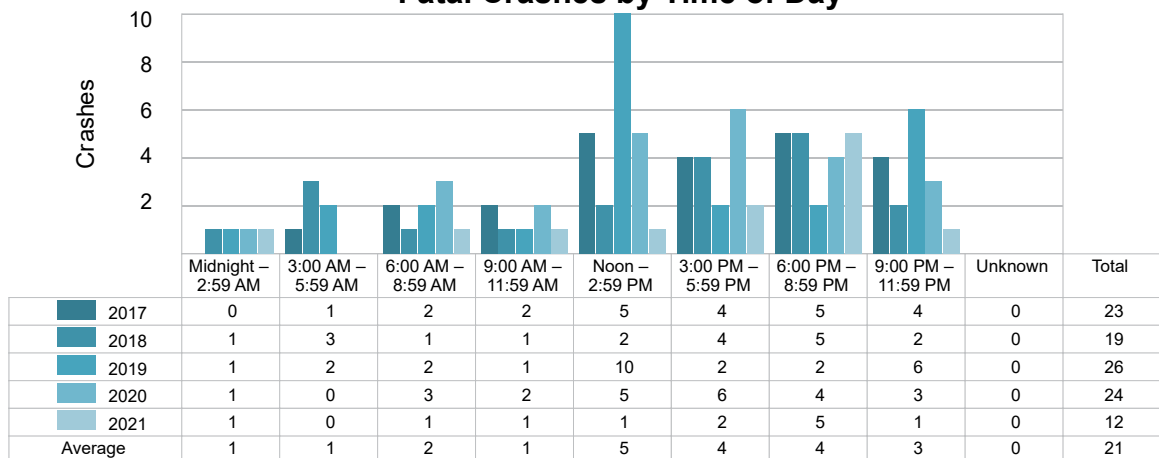
5-Year Trend - Crashes by Time of Day

Time of Day	2017		2018		2019		2020		2021	
	Total Crashes	Fatal Crashes	Total Crashes	Fatal Crashes	Total Crashes	Fatal Crashes	Total Crashes	Fatal Crashes	Total Crashes	Fatal Crashes
Midnight – 2:59 AM	218	0	213	1	205	1	190	1	224	1
3:00 AM – 5:59 AM	273	1	305	3	332	2	292	0	255	0
6:00 AM – 8:59 AM	916	2	863	1	883	2	773	3	733	1
9:00 AM – 11:59 AM	438	2	435	1	453	1	374	2	363	1
Noon – 2:59 PM	533	5	521	2	522	10	499	5	501	1
3:00 PM – 5:59 PM	674	4	654	4	666	2	553	6	569	2
6:00 PM – 8:59 PM	854	5	896	5	911	2	839	4	755	5
9:00 PM – 11:59 PM	583	4	564	2	631	6	532	3	519	1
Unknown	3	0	2	0	0	0	0	0	0	0
Total	4,492	23	4,453	19	4,603	26	4,052	24	3,919	12

5-Year Trend Crashes by Time of Day

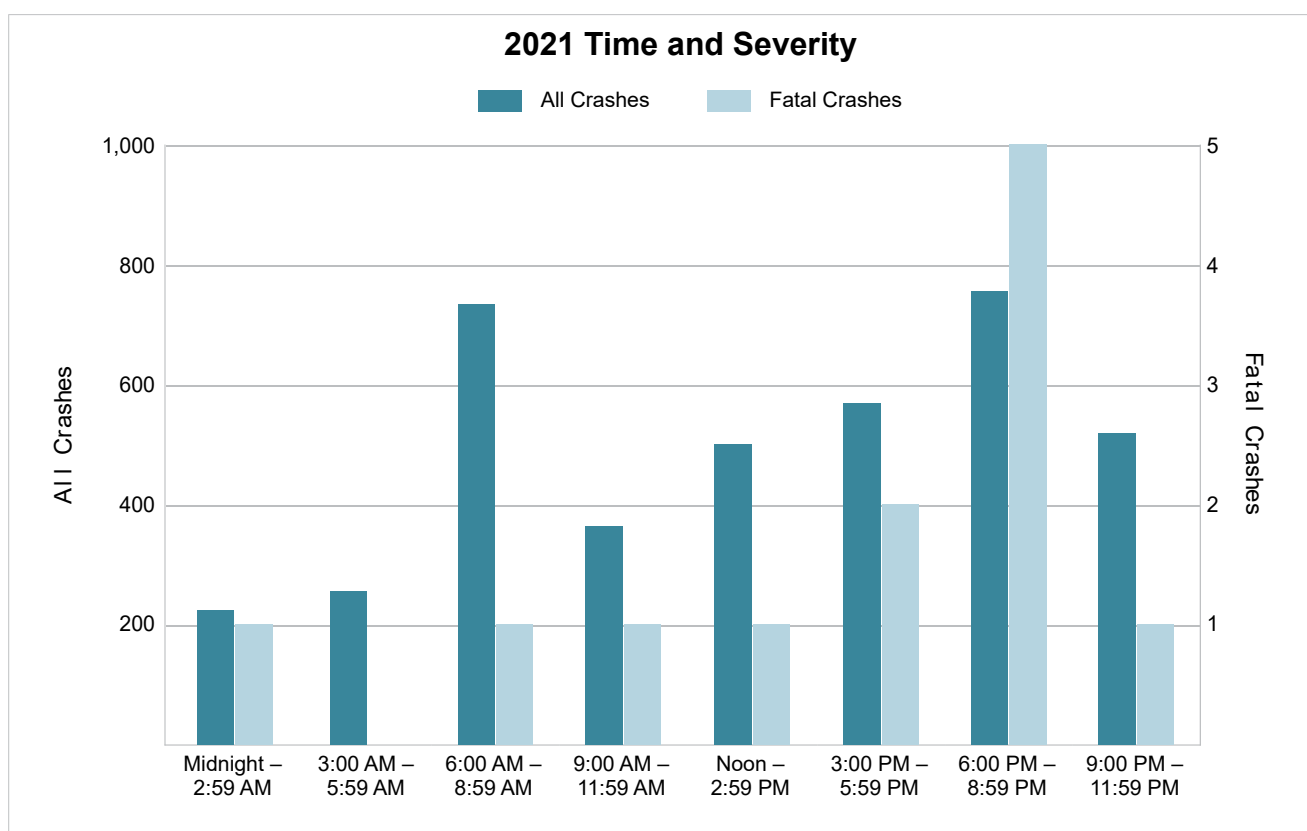


5-Year Trend Fatal Crashes by Time of Day



2021 - Time and Severity

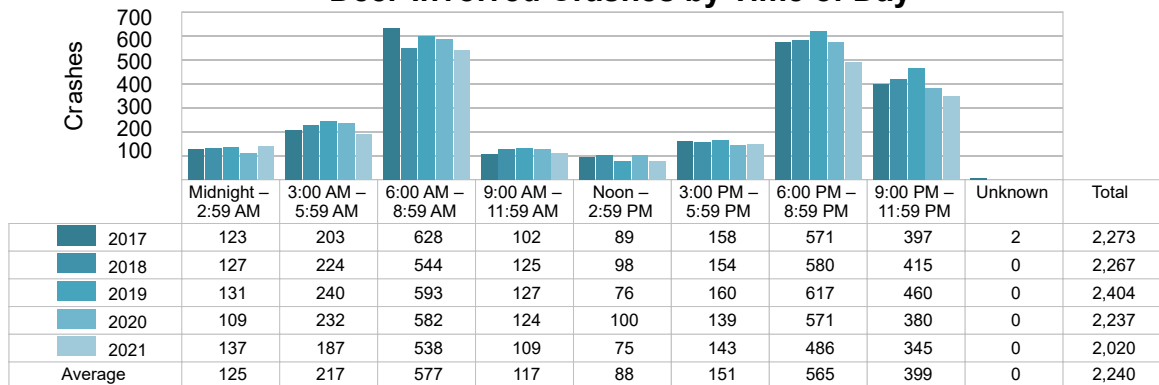
Time of Day	All Crashes		Fatal Crashes		Injury Crashes			PDO Crashes
	Number	% of Total	Number	% of Fatal	A	B	C	Number
Midnight – 2:59 AM	224	5.7	1	8.3	5	9	6	203
3:00 AM – 5:59 AM	255	6.5	0	0.0	4	6	5	240
6:00 AM – 8:59 AM	733	18.7	1	8.3	5	14	18	695
9:00 AM – 11:59 AM	363	9.3	1	8.3	8	25	23	306
Noon – 2:59 PM	501	12.8	1	8.3	15	46	46	393
3:00 PM – 5:59 PM	569	14.5	2	16.7	27	47	46	447
6:00 PM – 8:59 PM	755	19.3	5	41.7	13	31	25	681
9:00 PM – 11:59 PM	519	13.2	1	8.3	18	16	23	461
Unknown	0	0.0	0	0.0	0	0	0	0
Total	3,919	100.0	12	100.0	95	194	192	3,426



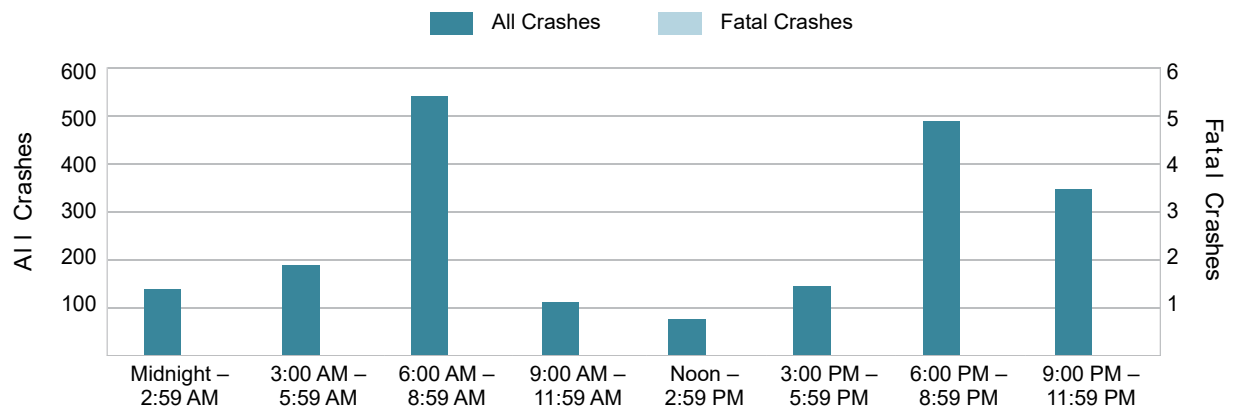
5-Year Trend - Deer-Involved Crashes by Time of Day

Time of Day	2017		2018		2019		2020		2021	
	Total Crashes	Fatal Crashes	Total Crashes	Fatal Crashes	Total Crashes	Fatal Crashes	Total Crashes	Fatal Crashes	Total Crashes	Fatal Crashes
Midnight – 2:59 AM	123	0	127	0	131	0	109	1	137	0
3:00 AM – 5:59 AM	203	0	224	0	240	0	232	0	187	0
6:00 AM – 8:59 AM	628	0	544	1	593	0	582	0	538	0
9:00 AM – 11:59 AM	102	0	125	0	127	0	124	0	109	0
Noon – 2:59 PM	89	0	98	0	76	0	100	0	75	0
3:00 PM – 5:59 PM	158	0	154	0	160	0	139	0	143	0
6:00 PM – 8:59 PM	571	1	580	0	617	0	571	0	486	0
9:00 PM – 11:59 PM	397	0	415	0	460	0	380	0	345	0
Unknown	2	0	0	0	0	0	0	0	0	0
Total	2,273	1	2,267	1	2,404	0	2,237	1	2,020	0

5-Year Trend Deer-Involved Crashes by Time of Day



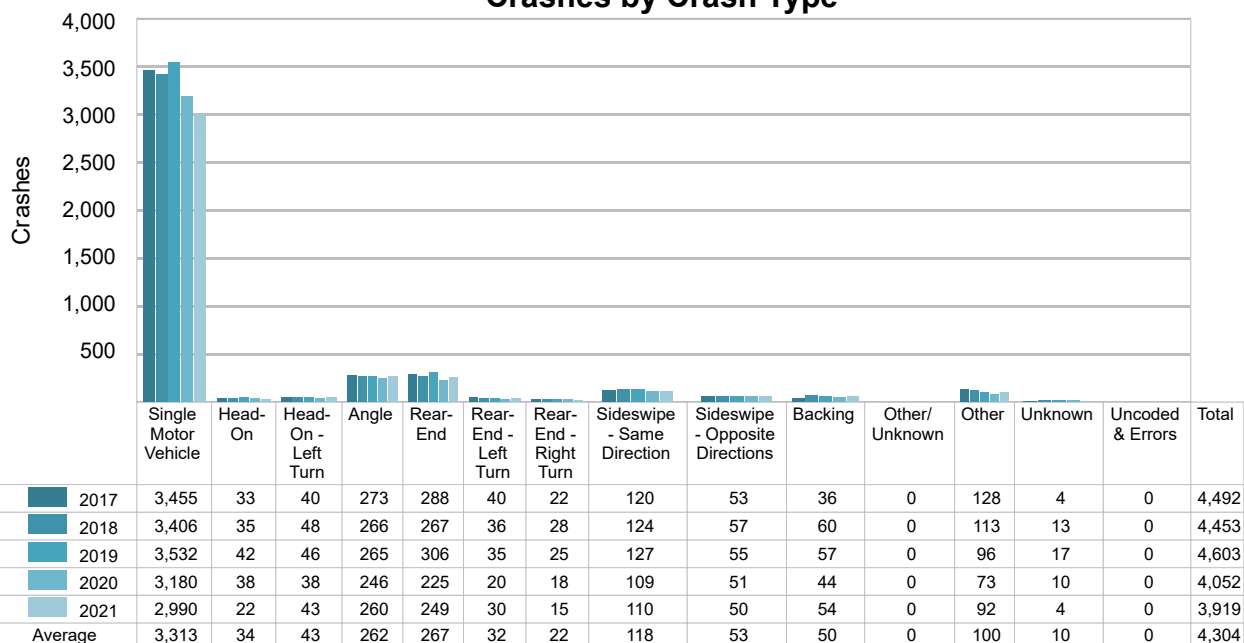
2021 Time and Severity of Deer-Involved Crashes



There were no fatal deer-involved crashes in MSP Post 62 - Hart in 2021.

5-Year Trend - Crashes by Crash Type

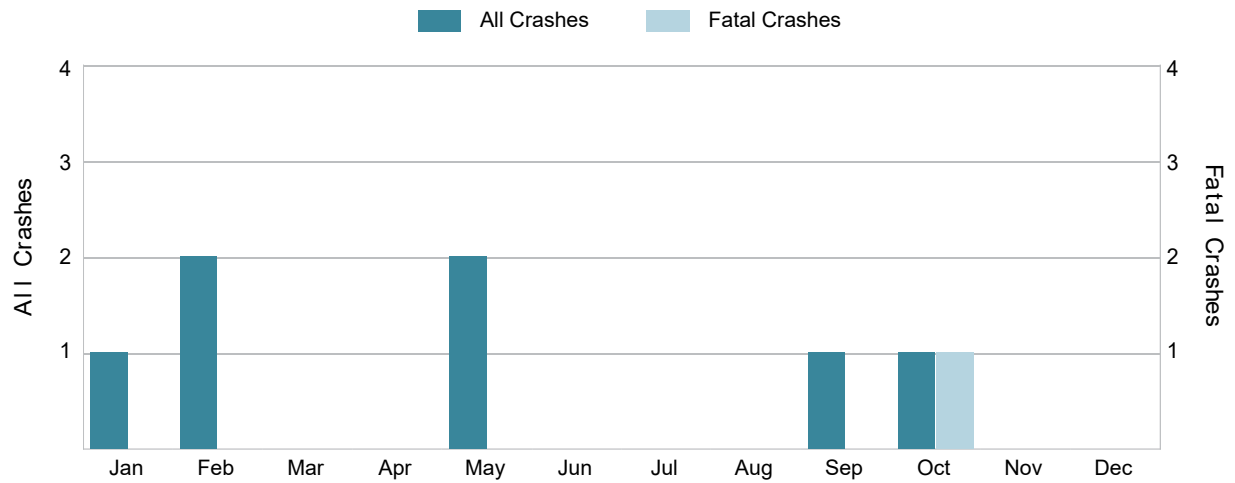
Crash Type	2017		2018		2019		2020		2021	
	Total Crashes	Fatal Crashes	Total Crashes	Fatal Crashes	Total Crashes	Fatal Crashes	Total Crashes	Fatal Crashes	Total Crashes	Fatal Crashes
Single Motor Vehicle	3,455	12	3,406	13	3,532	17	3,180	10	2,990	5
Head-On	33	2	35	1	42	2	38	3	22	3
Head-On - Left Turn	40	0	48	1	46	0	38	4	43	0
Angle	273	5	266	1	265	2	246	5	260	3
Rear-End	288	2	267	2	306	3	225	1	249	0
Rear-End - Left Turn	40	0	36	0	35	0	20	0	30	0
Rear-End - Right Turn	22	0	28	0	25	0	18	0	15	0
Sideswipe - Same Direction	120	0	124	0	127	1	109	0	110	0
Sideswipe - Opposite Directions	53	1	57	0	55	0	51	1	50	1
Backing	36	0	60	0	57	0	44	0	54	0
Other/Unknown	0	0	0	0	0	0	0	0	0	0
Other	128	1	113	1	96	1	73	0	92	0
Unknown	4	0	13	0	17	0	10	0	4	0
Uncoded & Errors	0	0	0	0	0	0	0	0	0	0
Total	4,492	23	4,453	19	4,603	26	4,052	24	3,919	12

5-Year Trend
Crashes by Crash Type

5-Year Trend - Pedestrian-Involved Crashes by Month

Month	2017		2018		2019		2020		2021	
	Total Crashes	Fatal Crashes	Total Crashes	Fatal Crashes	Total Crashes	Fatal Crashes	Total Crashes	Fatal Crashes	Total Crashes	Fatal Crashes
January	0	0	1	0	1	0	1	0	1	0
February	0	0	0	0	0	0	0	0	2	0
March	0	0	1	0	0	0	0	0	0	0
April	0	0	2	1	0	0	0	0	0	0
May	0	0	1	0	0	0	1	0	2	0
June	2	0	3	0	4	1	0	0	0	0
July	3	0	1	0	0	0	1	0	0	0
August	1	0	1	1	4	2	2	0	0	0
September	6	0	1	0	1	0	2	1	1	0
October	1	0	3	0	0	0	0	0	1	1
November	1	0	5	1	0	0	0	0	0	0
December	1	1	0	0	2	0	0	0	0	0
Total	15	1	19	3	12	3	7	1	7	1

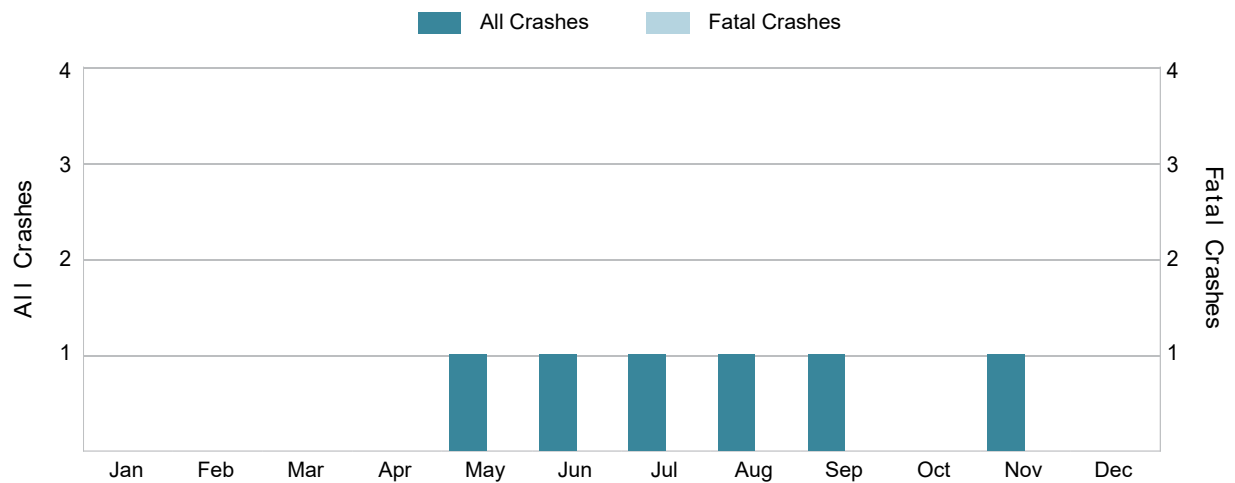
2021 Pedestrian-Involved Crashes by Month



5-Year Trend - Bicyclist-Involved Crashes by Month

Month	2017		2018		2019		2020		2021	
	Total Crashes	Fatal Crashes	Total Crashes	Fatal Crashes	Total Crashes	Fatal Crashes	Total Crashes	Fatal Crashes	Total Crashes	Fatal Crashes
January	0	0	0	0	0	0	0	0	0	0
February	0	0	0	0	0	0	0	0	0	0
March	0	0	0	0	0	0	0	0	0	0
April	0	0	0	0	0	0	0	0	0	0
May	1	0	1	0	0	0	0	0	1	0
June	3	0	3	0	1	0	0	0	1	0
July	1	0	0	0	0	0	1	0	1	0
August	1	0	1	0	2	2	3	0	1	0
September	2	0	1	0	1	0	1	0	1	0
October	1	0	0	0	0	0	2	1	0	0
November	1	0	1	0	0	0	0	0	1	0
December	0	0	0	0	0	0	0	0	0	0
Total	10	0	7	0	4	2	7	1	6	0

2021 Bicyclist-Involved Crashes by Month



There were no fatal bicyclist-involved crashes in MSP Post 62 - Hart in 2021.

2021 - Reported Motor Vehicle Crashes by County

County	Crashes												
	Total	Fatal	Injury	Property Damage	Inter-State	US Route	State Route	Local Street	Alcohol-Involved	Drug-Involved	Deer-Involved	Pedestrian-Involved	Bicyclist-Involved
Lake	309	0	37	272	0	86	42	180	9	1	160	0	1
Mason	1,193	4	110	1,079	0	470	21	702	31	18	646	4	2
Newaygo	1,460	6	223	1,231	0	0	528	930	68	22	661	2	1
Oceana	957	2	111	844	0	226	102	627	43	11	553	1	2
Total	3,919	12	481	3,426	0	782	693	2,439	151	52	2,020	7	6

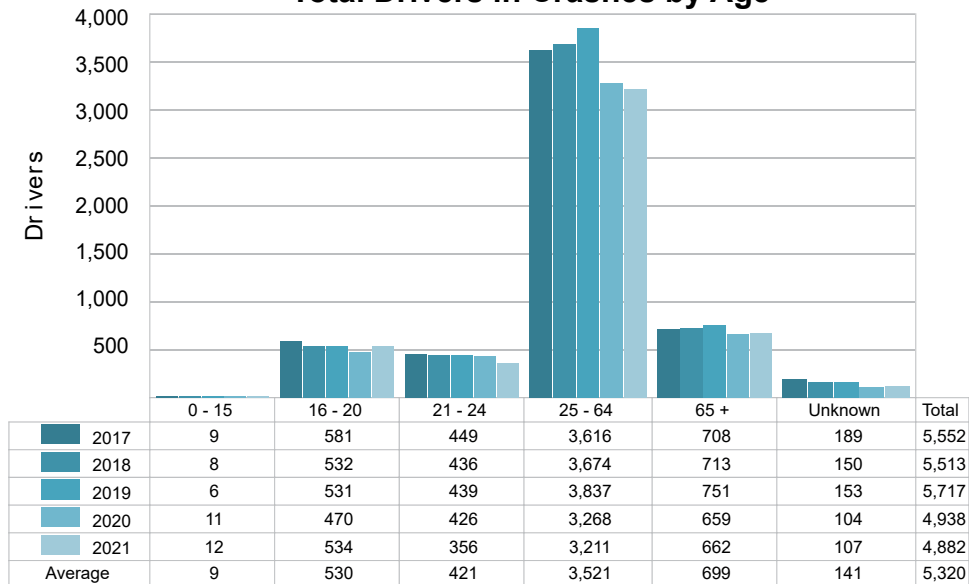
2021 - People in Reported Motor Vehicle Crashes by County

County	People					
	Fatalities	Suspected Serious Injuries	Suspected Minor Injuries	Possible Injuries	No Injuries	Uncoded & Errors
Lake	0	12	46	39	443	5
Mason	6	54	78	128	1,531	47
Newaygo	6	94	238	150	1,905	37
Oceana	2	49	98	104	1,175	23
Total	14	209	460	421	5,054	112

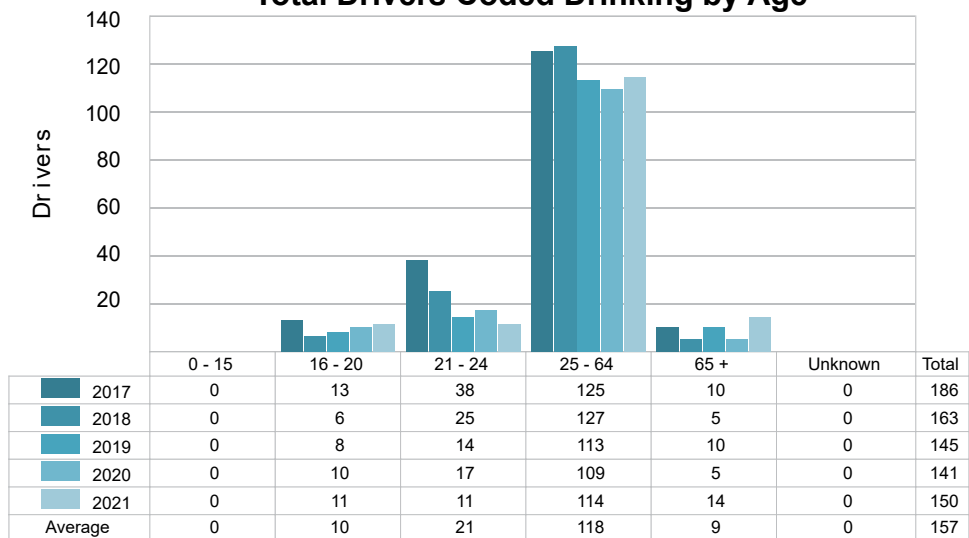
5-Year Trend - Drivers in Crashes Coded Drinking by Driver Age

Driver Age	2017		2018		2019		2020		2021	
	Total Drivers in Crashes	Total Drivers Coded Drinking	Total Drivers in Crashes	Total Drivers Coded Drinking	Total Drivers in Crashes	Total Drivers Coded Drinking	Total Drivers in Crashes	Total Drivers Coded Drinking	Total Drivers in Crashes	Total Drivers Coded Drinking
0 - 15	9	0	8	0	6	0	11	0	12	0
16 - 20	581	13	532	6	531	8	470	10	534	11
21 - 24	449	38	436	25	439	14	426	17	356	11
25 - 64	3,616	125	3,674	127	3,837	113	3,268	109	3,211	114
65 +	708	10	713	5	751	10	659	5	662	14
Unknown	189	0	150	0	153	0	104	0	107	0
Total	5,552	186	5,513	163	5,717	145	4,938	141	4,882	150

**5-Year Trend
Total Drivers in Crashes by Age**



**5-Year Trend
Total Drivers Coded Drinking by Age**



2021 - Bodily Alcohol Concentration (BAC) Results Among All Vehicle Drivers in Alcohol-Involved Crashes by Age

Age Group	Drivers				BAC Result Range for Drivers Coded Drinking				
	Total Drivers in Alcohol-Involved Crashes	Total Drivers Tested in all Crashes	Total Drivers Coded Drinking, Tested	Total Drivers Coded Drinking	BAC = 0.00	BAC 0.01 g/dL to 0.07 g/dL	BAC 0.08 g/dL to 0.16 g/dL	BAC 0.17 g/dL and Above	BAC Not Reported
0 - 15	0	0	0	0	0	0	0	0	0
16 - 20	13	14	9	11	0	2	5	0	4
21 - 24	14	16	10	11	0	0	3	4	4
25 - 64	130	111	77	114	0	6	25	21	62
65 +	19	17	12	14	0	3	7	3	1
Unknown	5	0	0	0	0	0	0	0	0
Total	181	158	108	150	0	11	40	28	71

Notes: BAC measured in grams (g) per deciliter (dL).

BAC may not be reported if drivers are not tested or if the results are not available immediately (as in the case of a blood test).

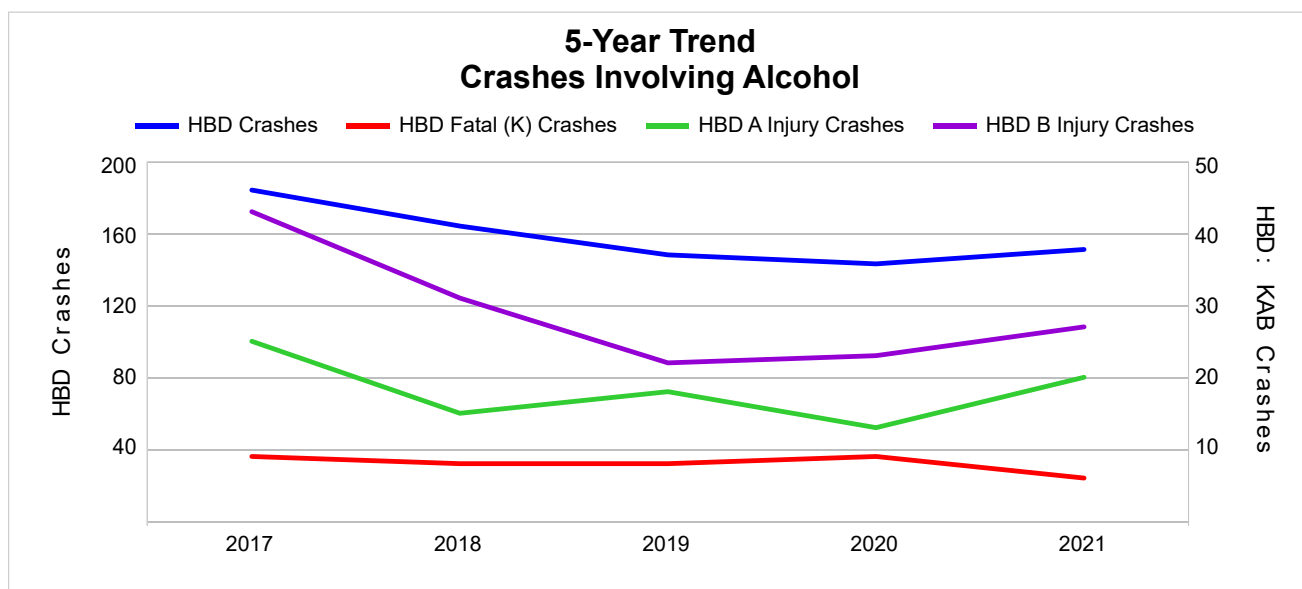
A driver may be coded by the officer as drinking even though no test is administered.

5-Year Trend - Crashes Involving Alcohol

Year	All Crashes	HBD Crashes	% HBD	Fatal Crashes	HBD Fatal Crashes	% HBD	A Injury Crashes	HBD A Injury Crashes	% HBD	B Injury Crashes	HBD B Injury Crashes	% HBD
2017	4,492	184	4.1	23	9	39.1	105	25	23.8	241	43	17.8
2018	4,453	164	3.7	19	8	42.1	100	15	15.0	226	31	13.7
2019	4,603	148	3.2	26	8	30.8	90	18	20.0	203	22	10.8
2020	4,052	143	3.5	24	9	37.5	91	13	14.3	215	23	10.7
2021	3,919 *	151	3.9	12 *	6 *	50.0 **	95	20	21.1	194 *	27	13.9

Note: * Indicates that the most recent year is the lowest number or percentage reported in the 5-year period in that column.

** Indicates that the most recent year is the highest number or percentage reported in the 5-year period in that column.



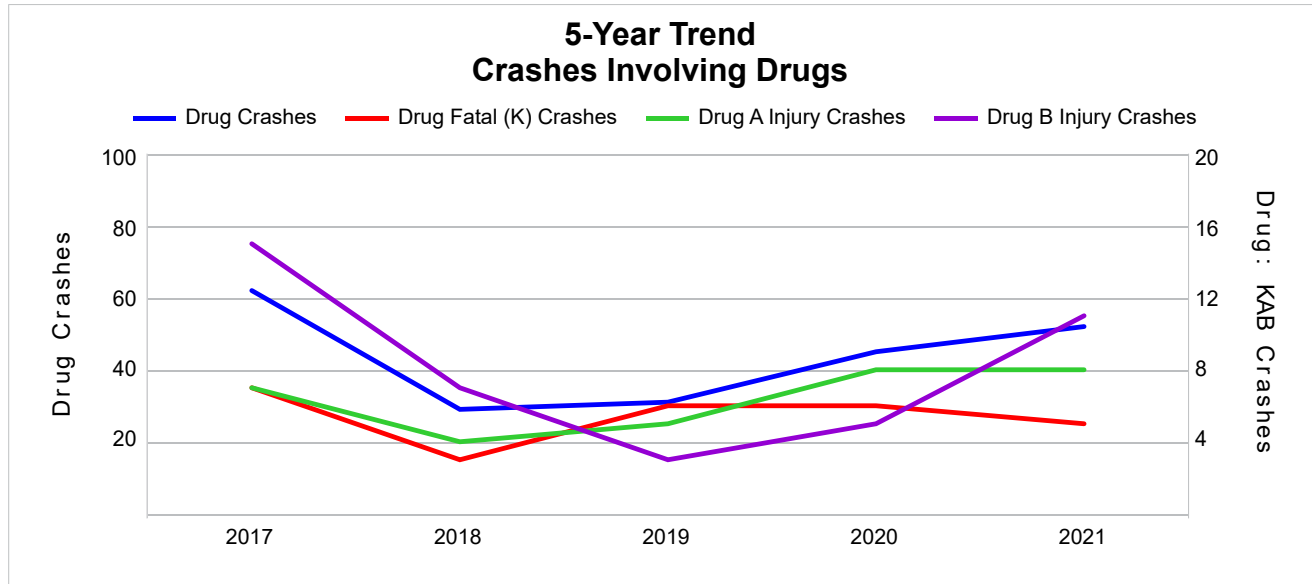
Note: Had-Been-Drinking (HBD)

5-Year Trend - Crashes Involving Drugs

Year	All Crashes	Drug Crashes	% Drug	Fatal Crashes	Drug Fatal Crashes	% Drug	A Injury Crashes	Drug A Injury Crashes	% Drug	B Injury Crashes	Drug B Injury Crashes	% Drug
2017	4,492	62	1.4	23	7	30.4	105	7	6.7	241	15	6.2
2018	4,453	29	0.7	19	3	15.8	100	4	4.0	226	7	3.1
2019	4,603	31	0.7	26	6	23.1	90	5	5.6	203	3	1.5
2020	4,052	45	1.1	24	6	25.0	91	8	8.8	215	5	2.3
2021	3,919 *	52	1.3	12 *	5	41.7 **	95	8	8.4	194 *	11	5.7

Note: * Indicates that the most recent year is the lowest number or percentage reported in the 5-year period in that column.

** Indicates that the most recent year is the highest number or percentage reported in the 5-year period in that column.

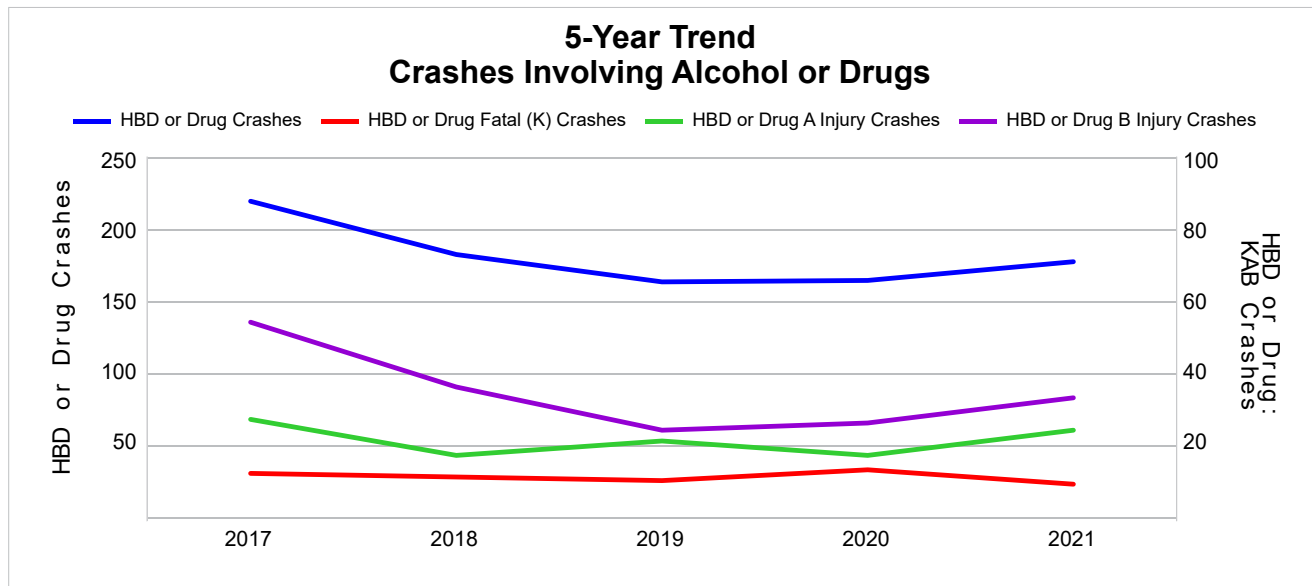


5-Year Trend - Crashes Involving Alcohol or Drugs

Year	All Crashes	HBD or Drug Crashes	% HBD or Drug	Fatal Crashes	HBD or Drug Fatal Crashes	% HBD or Drug	A Injury Crashes	HBD or Drug A Injury Crashes	% HBD or Drug	B Injury Crashes	HBD or Drug B Injury Crashes	% HBD or Drug
2017	4,492	219	4.9	23	12	52.2	105	27	25.7	241	54	22.4
2018	4,453	182	4.1	19	11	57.9	100	17	17.0	226	36	15.9
2019	4,603	163	3.5	26	10	38.5	90	21	23.3	203	24	11.8
2020	4,052	164	4.0	24	13	54.2	91	17	18.7	215	26	12.1
2021	3,919 *	177	4.5	12 *	9 *	75.0 **	95	24	25.3	194 *	33	17.0

Note: * Indicates that the most recent year is the lowest number or percentage reported in the 5-year period in that column.

** Indicates that the most recent year is the highest number or percentage reported in the 5-year period in that column.



Note: Had-Been-Drinking (HBD)

2021 - Restraints Worn Among Vehicle Drivers and Injured Passengers by Vehicle Type

Vehicle Type	Total Occupants			Fatalities			A - Suspected Serious			B - Suspected Minor			C - Possible Injury			No Injury		
	Total	Used Restraint	%	Total	Used Restraint	%	Total	Used Restraint	%	Total	Used Restraint	%	Total	Used Restraint	%	Total	Used Restraint	%
Passenger Car, SUV, Van	3,641	3,384	92.9	7	5	71.4	64	49	76.6	171	145	84.8	218	199	91.3	3,135	2,986	95.2
Motor Home	10	9	90.0	0	0	0.0	0	0	0.0	1	0	0.0	0	0	0.0	9	9	100.0
Pickup Truck	1,138	1,022	89.8	5	4	80.0	23	10	43.5	61	52	85.2	56	51	91.1	974	905	92.9
Small Truck Under 10,000 lbs. GVWR	30	29	96.7	0	0	0.0	0	0	0.0	1	1	100.0	1	1	100.0	27	27	100.0
Motorcycle	67	37	55.2	0	0	0.0	16	8	50.0	25	15	60.0	7	4	57.1	17	10	58.8
Moped/Goped	6	5	83.3	0	0	0.0	0	0	0.0	5	4	80.0	0	0	0.0	1	1	100.0
Go-Cart/Golf Cart	0	0	0.0	0	0	0.0	0	0	0.0	0	0	0.0	0	0	0.0	0	0	0.0
Snowmobile	4	2	50.0	0	0	0.0	1	1	100.0	0	0	0.0	0	0	0.0	3	1	33.3
Off-Road Vehicle (ORV)/All-Terrain Vehicle (ATV)	22	8	36.4	0	0	0.0	6	1	16.7	3	1	33.3	4	1	25.0	9	5	55.6
Other (non-registered farm equipment, construction equipment, snow plows, etc.)	28	18	64.3	1	0	0.0	0	0	0.0	0	0	0.0	0	0	0.0	26	18	69.2
Truck/Bus (over 10,000 lbs. GVWR/8+ occupants/hazmat placard)	102	98	96.1	0	0	0.0	1	1	100.0	2	2	100.0	1	1	100.0	97	94	96.9
Uncoded & Errors	42	0	0.0	0	0	0.0	0	0	0.0	0	0	0.0	0	0	0.0	0	0	0.0
Total	5,090	4,612	90.6	13	9	69.2	111	70	63.1	269	220	81.8	287	257	89.5	4,298	4,056	94.4

Note: Restraint Use includes shoulder belt only used, lap belt only used, both lap and shoulder belts used, child restraint used, restraint failure, and helmet worn.

2021 - Restraints Worn Among Vehicle Drivers and Injured Passengers by Age

Age Group	Total Occupants			Fatalities			A - Suspected Serious			B - Suspected Minor			C - Possible Injury			No Injury		
	Total	Used Restraint	%	Total	Used Restraint	%	Total	Used Restraint	%	Total	Used Restraint	%	Total	Used Restraint	%	Total	Used Restraint	%
0 - 15	73	62	84.9	0	0	0.0	4	1	25.0	29	26	89.7	30	29	96.7	10	6	60.0
16 - 20	563	524	93.1	1	1	100.0	14	8	57.1	35	33	94.3	35	31	88.6	477	451	94.5
21 - 24	376	347	92.3	3	3	100.0	8	4	50.0	23	17	73.9	19	18	94.7	322	305	94.7
25 - 64	3,285	3,049	92.8	8	4	50.0	68	40	58.8	146	119	81.5	162	142	87.7	2,896	2,744	94.8
65 +	686	629	91.7	1	1	100.0	17	17	100.0	36	25	69.4	41	37	90.2	590	549	93.1
Unknown	107	1	0.9	0	0	0.0	0	0	0.0	0	0	0.0	0	0	0.0	3	1	33.3
Total	5,090	4,612	90.6	13	9	69.2	111	70	63.1	269	220	81.8	287	257	89.5	4,298	4,056	94.4

Note: Restraint Use includes shoulder belt only used, lap belt only used, both lap and shoulder belts used, child restraint used, restraint failure, and helmet worn.

5-Year Trend - Restraint Use Among Drivers

Restraint Use	2017			2018			2019			2020			2021		
	Drivers	Fatal Drivers	Injured Drivers	Drivers	Fatal Drivers	Injured Drivers	Drivers	Fatal Drivers	Injured Drivers	Drivers	Fatal Drivers	Injured Drivers	Drivers	Fatal Drivers	Injured Drivers
No Belts Available	16	0	4	21	0	6	22	0	2	22	0	3	26	1	3
Shoulder Belt Only Used	35	0	8	44	0	4	48	0	4	27	0	2	22	0	2
Lap Belt Only Used	18	0	2	9	0	2	12	0	3	9	0	0	3	0	0
Both Lap & Shoulder Belt Used	5,000	13	428	5,075	1	468	5,187	8	426	4,421	8	376	4,364	7	341
No Belts Used	66	4	34	39	3	23	43	4	21	42	3	20	53	3	28
Child Restraint Used - Forward Facing	1	0	0	0	0	0	0	0	0	0	0	0	0	0	0
Child Restraint Not Used, Unavailable or Improper Use	0	0	0	0	0	0	0	0	0	0	0	0	0	0	0
Child Restraint Used - Rear Facing	0	0	0	0	0	0	0	0	0	0	0	0	0	0	0
Child Restraint Used - Booster Seat	0	0	0	0	0	0	0	0	0	0	0	0	0	0	0
Restraint Failure	1	0	1	1	0	0	5	0	1	2	0	1	3	0	0
Restraint Use Unknown	298	1	22	230	0	14	295	2	21	309	1	25	335	0	34
Helmet Worn	56	3	38	51	1	38	53	2	40	68	6	52	44	0	30
Helmet Not Worn	26	1	24	21	3	14	31	2	22	32	0	24	27	0	21
Helmet Use Unknown	4	0	2	5	0	5	5	0	4	6	0	4	4	0	2
Uncoded & Errors	31	0	0	17	0	0	16	0	0	0	0	0	1	0	0
Total	5,552	22	563	5,513	8	574	5,717	18	544	4,938	18	507	4,882	11	461

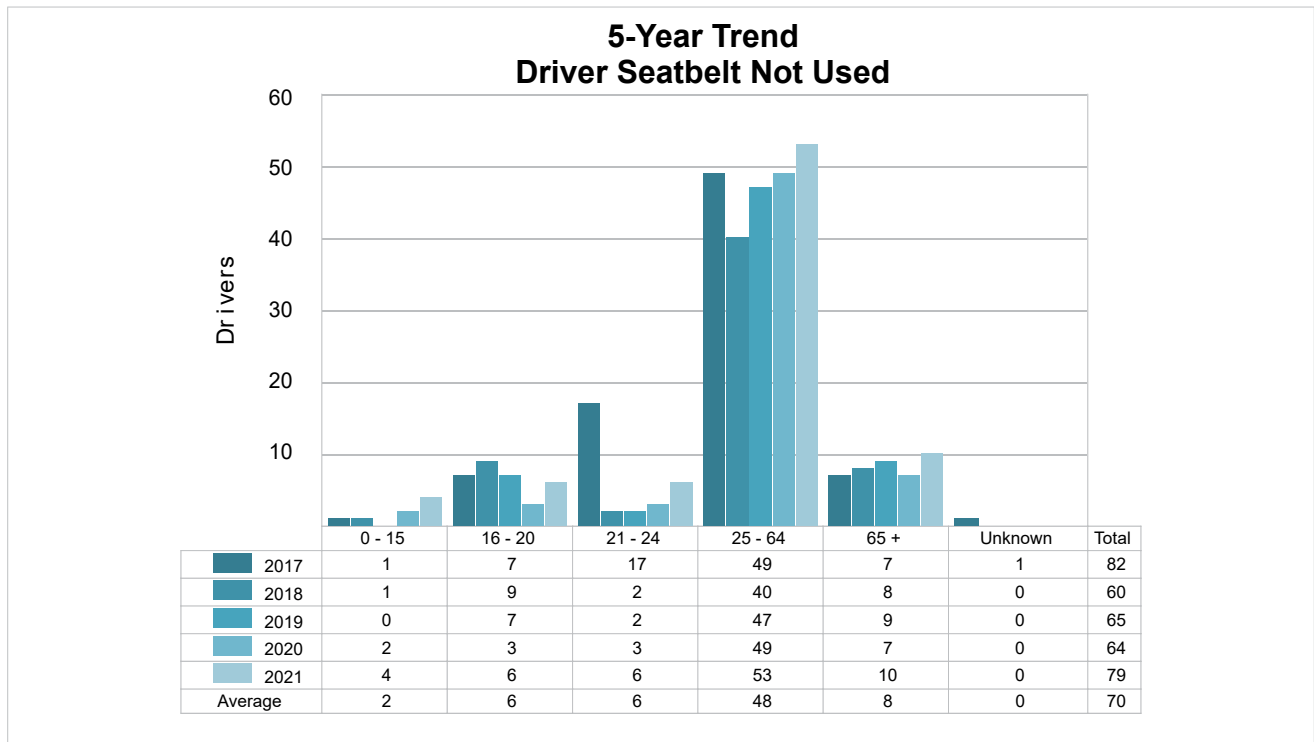
5-Year Trend - Restraint Use Among Drivers Coded Drinking

Restraint Use	2017			2018			2019			2020			2021		
	Drivers	Fatal Drivers	Injured Drivers	Drivers	Fatal Drivers	Injured Drivers	Drivers	Fatal Drivers	Injured Drivers	Drivers	Fatal Drivers	Injured Drivers	Drivers	Fatal Drivers	Injured Drivers
No Belts Available	1	0	1	0	0	0	0	0	0	1	0	0	1	0	1
Shoulder Belt Only Used	2	0	2	0	0	0	2	0	1	2	0	0	2	0	1
Lap Belt Only Used	0	0	0	0	0	0	1	0	1	1	0	0	0	0	0
Both Lap & Shoulder Belt Used	129	4	39	114	0	38	101	2	26	77	0	19	78	1	31
No Belts Used	22	4	16	11	1	8	11	1	8	13	2	7	17	3	10
Child Restraint Used - Forward Facing	0	0	0	0	0	0	0	0	0	0	0	0	0	0	0
Child Restraint Not Used, Unavailable or Improper Use	0	0	0	0	0	0	0	0	0	0	0	0	0	0	0
Child Restraint Used - Rear Facing	0	0	0	0	0	0	0	0	0	0	0	0	0	0	0
Child Restraint Used - Booster Seat	0	0	0	0	0	0	0	0	0	0	0	0	0	0	0
Restraint Failure	0	0	0	0	0	0	2	0	0	0	0	0	1	0	0
Restraint Use Unknown	17	0	4	30	0	4	20	2	6	37	1	11	44	0	17
Helmet Worn	5	1	3	6	1	4	3	0	2	7	1	4	2	0	0
Helmet Not Worn	10	0	10	2	1	1	5	0	4	3	0	1	4	0	4
Helmet Use Unknown	0	0	0	0	0	0	0	0	0	0	0	0	1	0	0
Uncoded & Errors	0	0	0	0	0	0	0	0	0	0	0	0	0	0	0
Total	186	9	75	163	3	55	145	5	48	141	4	42	150	4	64

5-Year Trend - Seatbelt Not Used Among Drivers by Age

Age Group	2017			2018			2019			2020			2021		
	Drivers	Fatal Drivers	Injured Drivers	Drivers	Fatal Drivers	Injured Drivers	Drivers	Fatal Drivers	Injured Drivers	Drivers	Fatal Drivers	Injured Drivers	Drivers	Fatal Drivers	Injured Drivers
0 - 15	1	0	0	1	0	0	0	0	0	2	0	0	4	0	1
16 - 20	7	1	5	9	1	5	7	0	4	3	0	0	6	0	4
21 - 24	17	2	13	2	0	1	2	0	2	3	0	3	6	0	3
25 - 64	49	1	16	40	2	22	47	2	14	49	2	18	53	4	21
65 +	7	0	4	8	0	1	9	2	3	7	1	2	10	0	2
Unknown	1	0	0	0	0	0	0	0	0	0	0	0	0	0	0
Total	82	4	38	60	3	29	65	4	23	64	3	23	79	4	31

Note: Seatbelt Not Used includes no belts available or no belts used.

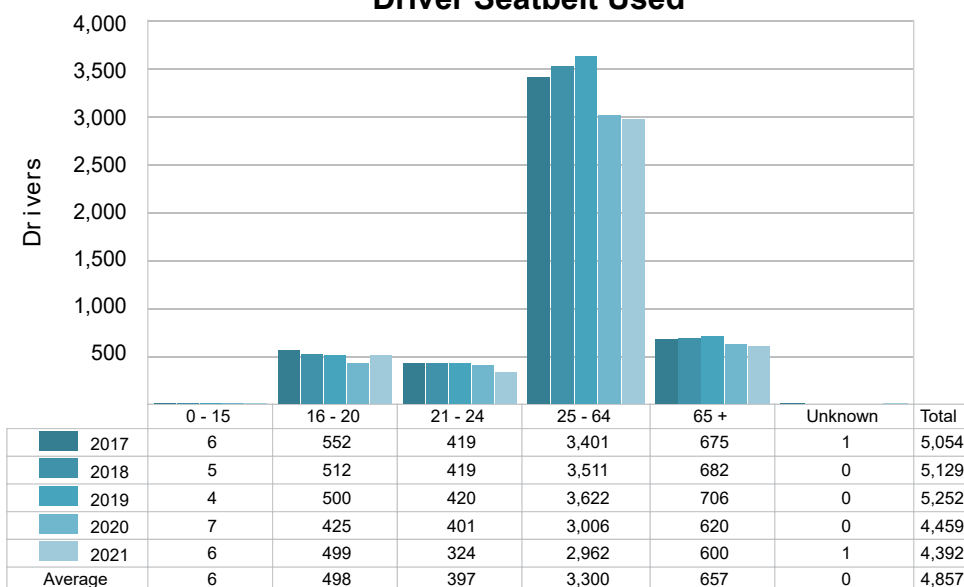


5-Year Trend - Seatbelt Used Among Drivers by Age

Age Group	2017			2018			2019			2020			2021		
	Drivers	Fatal Drivers	Injured Drivers	Drivers	Fatal Drivers	Injured Drivers	Drivers	Fatal Drivers	Injured Drivers	Drivers	Fatal Drivers	Injured Drivers	Drivers	Fatal Drivers	Injured Drivers
0 - 15	6	0	0	5	0	0	4	0	0	7	0	1	6	0	0
16 - 20	552	2	71	512	0	62	500	0	57	425	1	58	499	1	48
21 - 24	419	0	38	419	0	40	420	0	41	401	0	39	324	1	19
25 - 64	3,401	6	272	3,511	1	310	3,622	5	267	3,006	3	207	2,962	4	224
65 +	675	5	58	682	0	62	706	3	69	620	4	74	600	1	52
Unknown	1	0	0	0	0	0	0	0	0	0	0	0	1	0	0
Total	5,054	13	439	5,129	1	474	5,252	8	434	4,459	8	379	4,392	7	343

Note: Seatbelt Used includes shoulder belt only used, lap belt only used, both lap and shoulder belts used, and restraint failure.

5-Year Trend Driver Seatbelt Used



5-Year Trend - Drivers in Crashes by Hazardous Action

Hazardous Action	2017		2018		2019		2020		2021	
	Total Drivers in Crashes	Drivers in Fatal Crashes	Total Drivers in Crashes	Drivers in Fatal Crashes	Total Drivers in Crashes	Drivers in Fatal Crashes	Total Drivers in Crashes	Drivers in Fatal Crashes	Total Drivers in Crashes	Drivers in Fatal Crashes
None	3,666	17	3,697	11	3,852	12	3,444	17	3,315	8
Speed Too Fast	585	8	530	5	610	8	426	7	435	1
Speed Too Slow	3	0	0	0	3	1	3	0	3	0
Failed to Yield	304	4	305	1	323	1	252	1	291	1
Disregard Traffic Control	46	2	69	1	40	2	63	4	44	2
Drove Wrong Way	1	0	2	0	2	0	2	0	1	0
Drove Left of Center	37	3	34	1	38	2	34	2	38	0
Improper Passing	19	0	24	0	22	0	30	1	22	0
Improper Lane Use	41	0	29	0	29	0	31	0	35	2
Improper Turn	21	0	29	0	39	0	21	2	26	0
Improper/No Signal	4	0	7	0	5	0	6	0	3	0
Improper Backing	74	0	57	0	56	0	38	0	51	0
Unable to Stop in Assured Clear Distance	310	1	268	0	298	2	233	0	264	0
Other	131	1	167	2	140	3	110	1	127	1
Unknown	111	2	105	3	113	3	113	1	118	3
Reckless Driving	39	0	32	2	18	1	27	2	21	2
Careless/Negligent Driving	138	0	144	0	113	1	105	1	88	1
Uncoded & Errors	22	0	14	0	16	0	0	0	0	0
Total	5,552	38	5,513	26	5,717	36	4,938	39	4,882	21

Office of Highway Safety Planning

Physical Address:
7150 Harris Drive
Dimondale, Michigan 48821

Mailing Address:
P.O. Box 30634
Lansing, Michigan 48909

Find us on the web:
MichiganTrafficCrashFacts.org
mtcf-info@umich.edu

