



2021

# Michigan Traffic Crash Facts

**MTCF**  
Michigan Traffic  
Crash Facts

## Reporting Criteria

Please pay particular attention to the wording when interpreting the three levels of data gathered for this report.

### Crash

The Crash Level analyzes data related to crash events and returns one result per crash.

Examples: Time, weather, and location.

### Units

The Units Level analyzes the experience of the units in the crash and returns one result per vehicle, driver, pedestrian, bicyclist, or train.

Examples: Vehicle type, driver condition, and unit events.

### People

The People Level analyzes the experience of the people involved in the crash and returns one result per occupant/person/party.

Examples: Age, injury severity, and seat belt or helmet use.

### **KABCO Injury Indicator:**

K = Killed

A = Suspected Serious Injury

B = Suspected Minor Injury

C = Possible Injury

O = No Injury

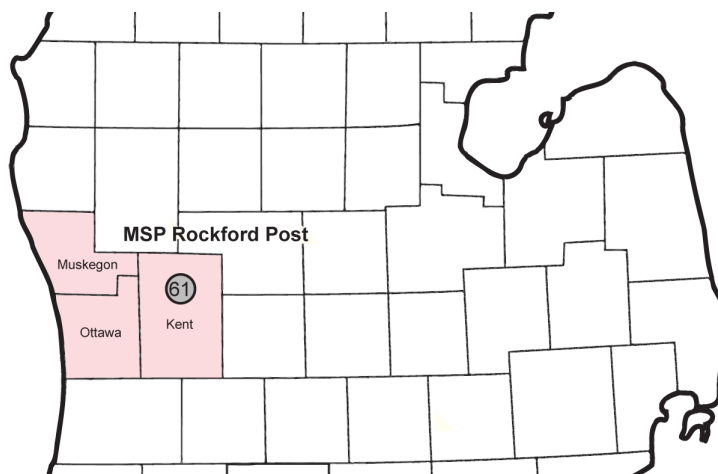
Property Damage Only (PDO)



## Michigan State Police (MSP) Post 61 - Grand Rapids

### 2021 Traffic Crash Data & 2017-2021 5-Year Trends

MSP Post 61 - Grand Rapids is comprised of Kent, Muskegon and Ottawa counties. Trend tables for this report are based on those counties.



### Sources:

The crashes in this report occurred on public roadways in Michigan and resulted in injuries, fatalities, or property damage (with \$1,000 as a reporting threshold). The information was gathered from Michigan Traffic Crash Report Forms (UD-10) submitted by local police departments, sheriff's offices, and the Michigan State Police. Other related information was obtained from the departments of Transportation, State, and Community Health.

## MSP Post 61 - Grand Rapids

- There were 32,415 crashes in Post 61 during 2021. [Page 1]
- A total of 114 fatalities resulted from 105 fatal crashes in 2021 in Post 61. [Page 1]
- There were 8,198 injuries and 6,077 injury crashes. [Page 1]
- There were 26,233 property damage only crashes (no fatalities or injuries). [Page 1]
- November had the highest number of crashes (3,390). [Pages 1-2]
- September had the highest number of fatal crashes (16) and fatalities (17). [Pages 1-2]
- September had the highest number of injury crashes (602) while October had the highest number of injuries (815). [Page 1]
- November had the highest number of property damage only crashes (2,815). [Page 1]
- Of all vehicles involved in fatal crashes, 19 (11.0%) were motorcycles. [Page 1]
- Friday was the day of the week with the highest number of crashes (5,449) and Sunday had the highest number of fatal crashes (19). [Pages 2-3]
- The 3:00 PM – 5:59 PM time period had the highest number of crashes (7,799). This holds true for every year between 2017 and 2021. The 6:00 PM – 8:59 PM time period had the highest number of fatal crashes (22). [Pages 5-6]
- During the period from 2017 to 2021, the highest number of deer crashes occurred in 2021 (3,864). The 6:00 AM – 8:59 AM time period had the highest number of deer-involved crashes. There was one fatal crash involving deer in 2021. [Page 7]
- Kent County (62.0%) had the highest number of crashes in Post 61 in 2021, followed by Ottawa County (23.6%), and Muskegon County (14.4%). [Page 11]
- Kent County (57.9%) had the highest number of fatalities in Post 61 in 2021, followed by Ottawa County (25.4%), and Muskegon County (16.7%). [Page 11]
- The highest number of drivers in crashes (65,361) occurred during 2019 and the highest number of drivers coded drinking in crashes (1,317) occurred during 2017 within the five year period between 2017 and 2021. [Page 12]
- A total of 1,241 crashes involved alcohol in 2021. [Page 13]
- Alcohol-involved fatal crashes were the highest in 2020 during the five-year period from 2017 to 2021 at 35. [Page 13]
- A total of 351 crashes, 28 fatal crashes, and 38 suspected injury crashes involved drugs in 2021. [Page 14]
- There were 47,721 drivers wearing seatbelts and 364 drivers not wearing seatbelts in crashes in 2021. Of the 364 drivers not wearing seatbelts, 19 (5.2%) were killed and 149 (40.9%) were injured. [Pages 17-19]
- The most common hazardous action coded for drivers in 2021 in all crashes was unable to stop in assured clear distance (7,574), while the most common hazardous action coded for drivers in fatal crashes was unknown (19). [Page 20]

## 2021 - Crashes and Injury by Month

Month	Crashes				People	
	Total	Fatal	Injury	Property Damage Only (PDO)	Fatalities	Injuries
January	2,532	5	406	2,121	5	537
February	2,771	8	401	2,362	8	505
March	2,116	9	409	1,698	9	573
April	2,111	10	426	1,675	13	593
May	2,707	13	495	2,199	15	659
June	2,744	4	571	2,169	4	787
July	2,482	10	544	1,928	10	731
August	2,646	14	565	2,067	16	795
September	2,757	16	602	2,139	17	794
October	3,312	8	598	2,706	9	815
November	3,390	3	572	2,815	3	796
December	2,847	5	488	2,354	5	613
<b>Total</b>	<b>32,415</b>	<b>105</b>	<b>6,077</b>	<b>26,233</b>	<b>114</b>	<b>8,198</b>

## 2021 - Driver Statistics

Age Group	MSP Post 61 - Grand Rapids			Driver Rates	
	2019 Population*	Licensed Drivers	Drivers in Crashes	Per 10k Population	Per 10k Licensed
0 - 15	236,158	6,711	115	4.9	171.4
16 - 20	78,689	53,896	7,089	900.9	1,315.3
21 - 24	64,796	53,676	5,897	910.1	1,098.6
25 - 64	574,039	530,344	32,787	571.2	618.2
65 +	168,669	166,588	5,213	309.1	312.9
Unknown	0	0	6,249	--	--
<b>Total</b>	<b>1,122,351</b>	<b>811,215</b>	<b>57,350</b>	<b>511.0</b>	<b>707.0</b>

\*2021 Population of Michigan Counties (by single-year of age) not yet available from U.S. Census Bureau.

## 2021 - Vehicles in Crashes

Vehicle Type	Motor Vehicles		Fatal Crashes		Injury Crashes	PDO Crashes
	Number of Vehicles	% of Total	Number	% of Total	Number	Number
Passenger Car, SUV, Van	47,337	82.5	126	73.3	9,665	37,546
Motor Home	139	0.2	0	0.0	28	111
Pickup Truck	5,466	9.5	12	7.0	1,010	4,444
Small Truck Under 10,000 lbs. GVWR	232	0.4	0	0.0	39	193
Motorcycle	364	0.6	19	11.0	254	91
Moped/Goped	76	0.1	0	0.0	62	14
Go-Cart/Golf Cart	2	0.0	0	0.0	1	1
Snowmobile	3	0.0	1	0.6	1	1
Off-Road Vehicle (ORV)/All-Terrain Vehicle (ATV)	22	0.0	0	0.0	17	5
Other (non-registered farm equipment, construction equipment, snow plows, etc.)	174	0.3	1	0.6	40	133
Truck/Bus (over 10,000 lbs. GVWR/8+ occupants/hazmat placard)	1,727	3.0	11	6.4	288	1,428
Uncoded & Errors	1,808	3.2	2	1.2	141	1,665
<b>Total</b>	<b>57,350</b>	<b>100.0</b>	<b>172</b>	<b>100.0</b>	<b>11,546</b>	<b>45,632</b>

# MSP Post 61 - Grand Rapids (continued)

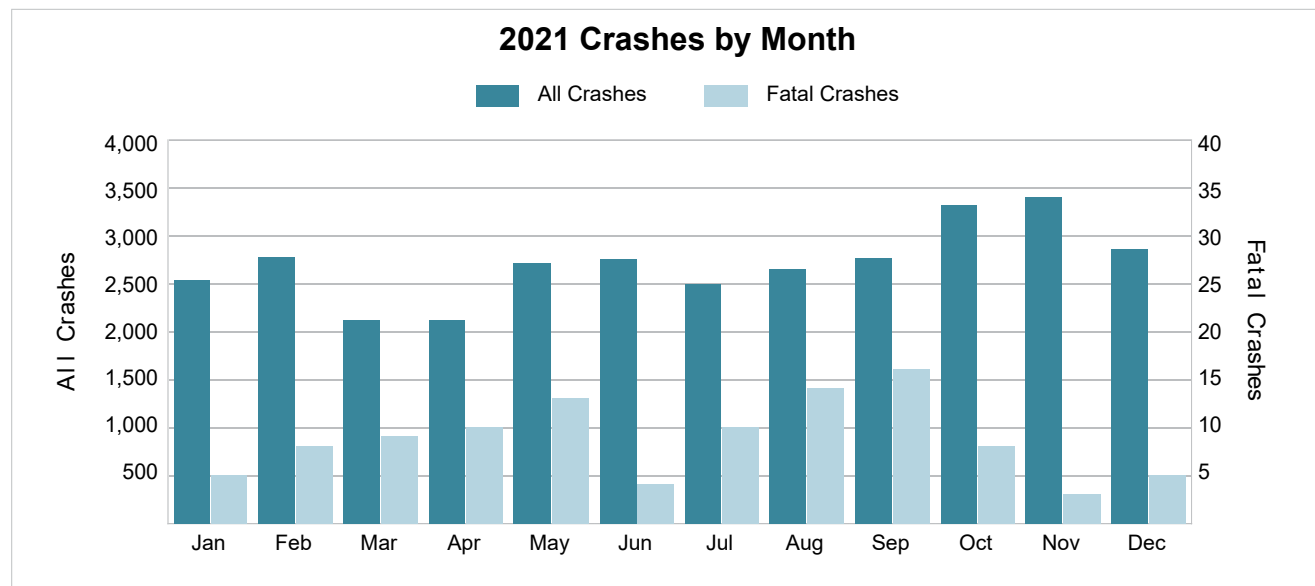
## 5-Year Trend - Crashes by Month

Month	2017		2018		2019		2020		2021	
	Total Crashes	Fatal Crashes	Total Crashes	Fatal Crashes	Total Crashes	Fatal Crashes	Total Crashes	Fatal Crashes	Total Crashes	Fatal Crashes
January	3,303	6	3,265	11	4,019	3	2,709	6	2,532	5
February	2,319	8	2,904	5	3,164	3	2,733	8	2,771	8
March	2,675	9	2,400	3	2,651	6	1,524	3	2,116	9
April	2,377	6	2,755	9	2,485	5	1,064	2	2,111	10
May	2,782	7	2,735	12	2,752	9	1,698	13	2,707	13
June	2,836	8	2,750	6	2,782	10	2,307	11	2,744	4
July	2,653	5	2,529	7	2,616	14	2,375	11	2,482	10
August	2,640	10	2,744	16	2,704	9	2,421	12	2,646	14
September	2,685	12	2,776	17	2,799	6	2,622	9	2,757	16
October	3,602	8	3,573	5	3,762	13	3,122	5	3,312	8
November	3,110	14	3,736	2	3,599	8	2,673	7	3,390	3
December	4,794	5	3,010	7	3,144	6	2,489	5	2,847	5
<b>Total</b>	<b>35,776</b>	<b>98</b>	<b>35,177</b>	<b>100</b>	<b>36,477</b>	<b>92</b>	<b>27,737</b>	<b>92</b>	<b>32,415</b>	<b>105</b>

## 5-Year Trend - Crashes by Day of Week

Day	2017		2018		2019		2020		2021	
	Total Crashes	Fatal Crashes	Total Crashes	Fatal Crashes	Total Crashes	Fatal Crashes	Total Crashes	Fatal Crashes	Total Crashes	Fatal Crashes
Monday	5,143	10	5,353	12	5,359	9	3,915	11	4,753	16
Tuesday	5,298	15	5,564	12	6,216	7	3,889	6	4,968	15
Wednesday	5,526	15	5,600	15	5,873	13	4,226	16	4,702	12
Thursday	5,706	19	5,044	11	5,514	11	4,528	12	4,954	14
Friday	6,154	14	5,892	13	5,890	25	4,536	15	5,449	13
Saturday	4,620	17	4,356	11	4,108	16	3,721	16	4,247	16
Sunday	3,329	8	3,368	26	3,517	11	2,922	16	3,342	19
<b>Total</b>	<b>35,776</b>	<b>98</b>	<b>35,177</b>	<b>100</b>	<b>36,477</b>	<b>92</b>	<b>27,737</b>	<b>92</b>	<b>32,415</b>	<b>105</b>

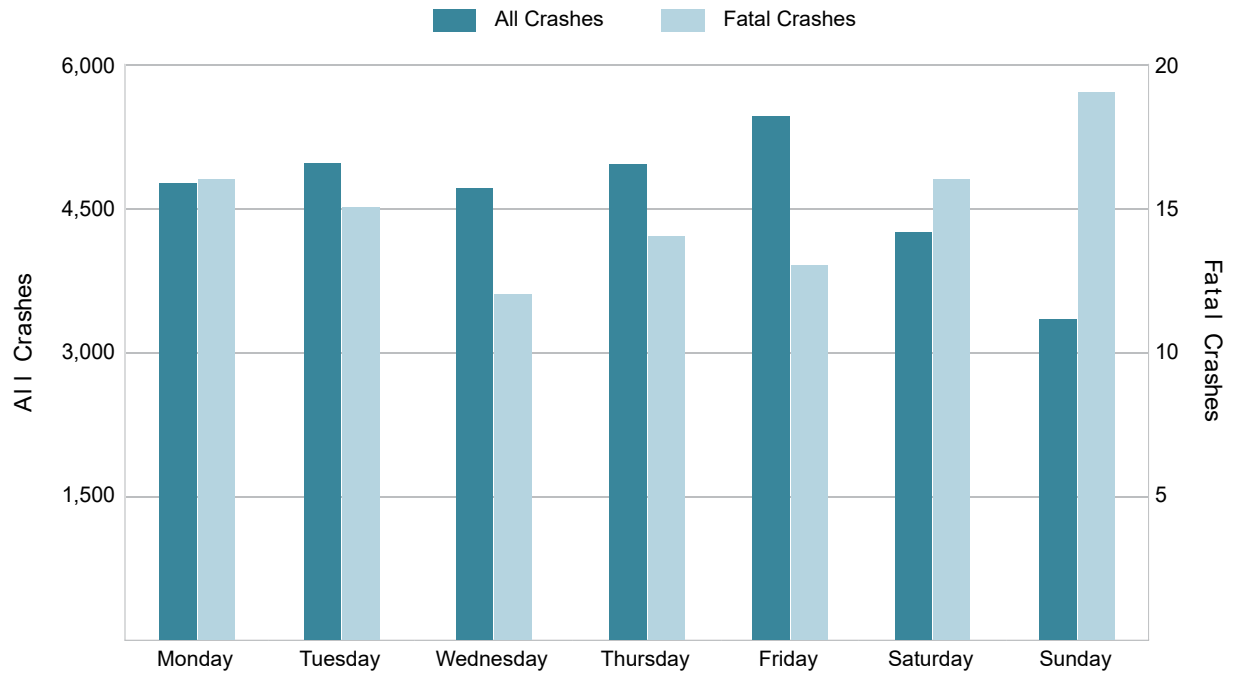
## 2021 Crashes by Month



2021 - Crashes by Day of Week

Day	All Crashes		Fatal Crashes		Injury Crashes			PDO Crashes
	Number	% of Total	Fatal	% of Fatal	A	B	C	Number
Monday	4,753	14.7	16	15.2	85	242	583	3,827
Tuesday	4,968	15.3	15	14.3	64	236	605	4,048
Wednesday	4,702	14.5	12	11.4	70	231	560	3,829
Thursday	4,954	15.3	14	13.3	69	234	585	4,052
Friday	5,449	16.8	13	12.4	102	300	632	4,402
Saturday	4,247	13.1	16	15.2	91	255	487	3,398
Sunday	3,342	10.3	19	18.1	68	223	355	2,677
<b>Total</b>	<b>32,415</b>	<b>100.0</b>	<b>105</b>	<b>100.0</b>	<b>549</b>	<b>1,721</b>	<b>3,807</b>	<b>26,233</b>

2021 Day of Week and Severity

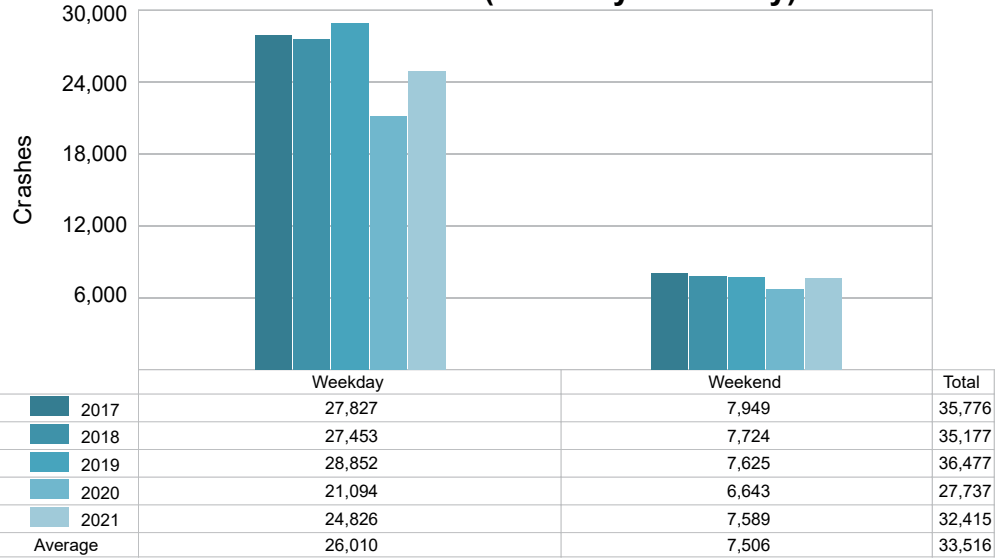


## MSP Post 61 - Grand Rapids (continued)

### 5-Year Trend - Crashes by Weekday and Weekend

Portion of Week	2017		2018		2019		2020		2021	
	Total Crashes	Fatal Crashes	Total Crashes	Fatal Crashes	Total Crashes	Fatal Crashes	Total Crashes	Fatal Crashes	Total Crashes	Fatal Crashes
Weekday	27,827	73	27,453	63	28,852	65	21,094	60	24,826	70
Weekend	7,949	25	7,724	37	7,625	27	6,643	32	7,589	35
<b>Total</b>	<b>35,776</b>	<b>98</b>	<b>35,177</b>	<b>100</b>	<b>36,477</b>	<b>92</b>	<b>27,737</b>	<b>92</b>	<b>32,415</b>	<b>105</b>

### 5-Year Crash Trends by Weekday (Monday - Friday) and Weekend (Saturday & Sunday)

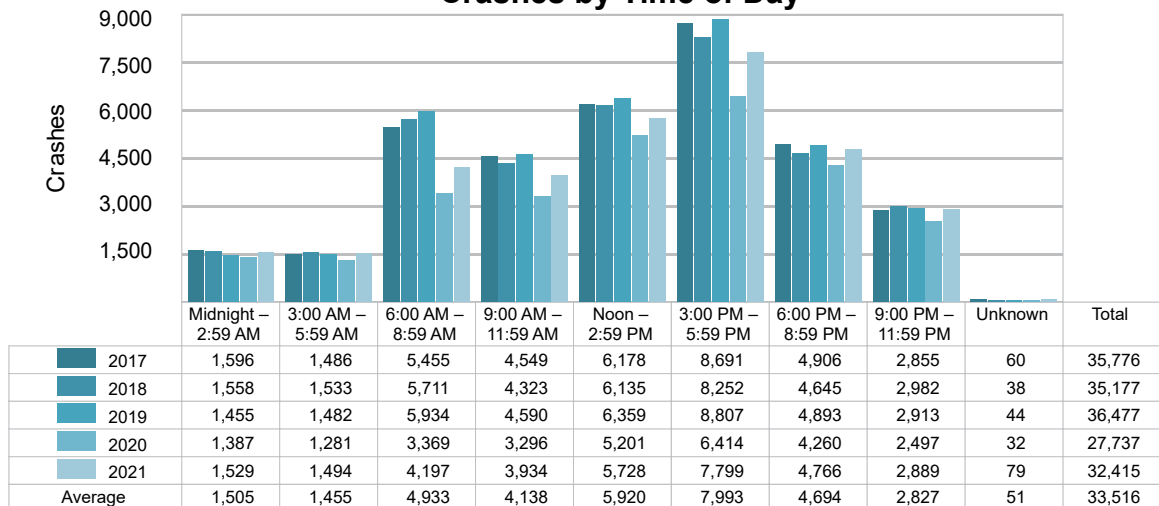


## 5-Year Trend - Crashes by Time of Day

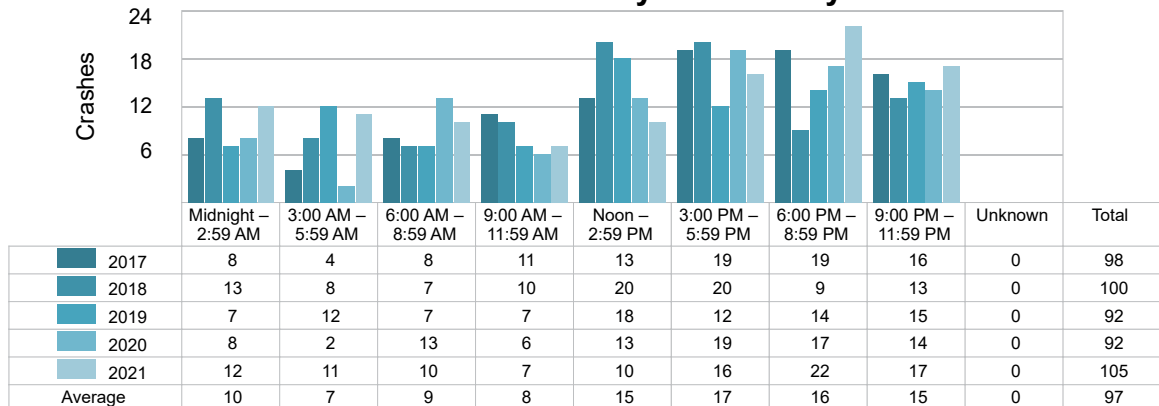
Time of Day	2017		2018		2019		2020		2021	
	Total Crashes	Fatal Crashes	Total Crashes	Fatal Crashes	Total Crashes	Fatal Crashes	Total Crashes	Fatal Crashes	Total Crashes	Fatal Crashes
Midnight – 2:59 AM	1,596	8	1,558	13	1,455	7	1,387	8	1,529	12
3:00 AM – 5:59 AM	1,486	4	1,533	8	1,482	12	1,281	2	1,494	11
6:00 AM – 8:59 AM	5,455	8	5,711	7	5,934	7	3,369	13	4,197	10
9:00 AM – 11:59 AM	4,549	11	4,323	10	4,590	7	3,296	6	3,934	7
Noon – 2:59 PM	6,178	13	6,135	20	6,359	18	5,201	13	5,728	10
3:00 PM – 5:59 PM	8,691 †	19	8,252 †	20	8,807 †	12	6,414 †	19	7,799 †	16
6:00 PM – 8:59 PM	4,906	19	4,645	9	4,893	14	4,260	17	4,766	22
9:00 PM – 11:59 PM	2,855	16	2,982	13	2,913	15	2,497	14	2,889	17
Unknown	60	0	38	0	44	0	32	0	79	0
<b>Total</b>	<b>35,776</b>	<b>98</b>	<b>35,177</b>	<b>100</b>	<b>36,477</b>	<b>92</b>	<b>27,737</b>	<b>92</b>	<b>32,415</b>	<b>105</b>

Note: † Indicates that the highest number of total crashes reported in the 5-year period occurred in the same time period.

## 5-Year Trend Crashes by Time of Day



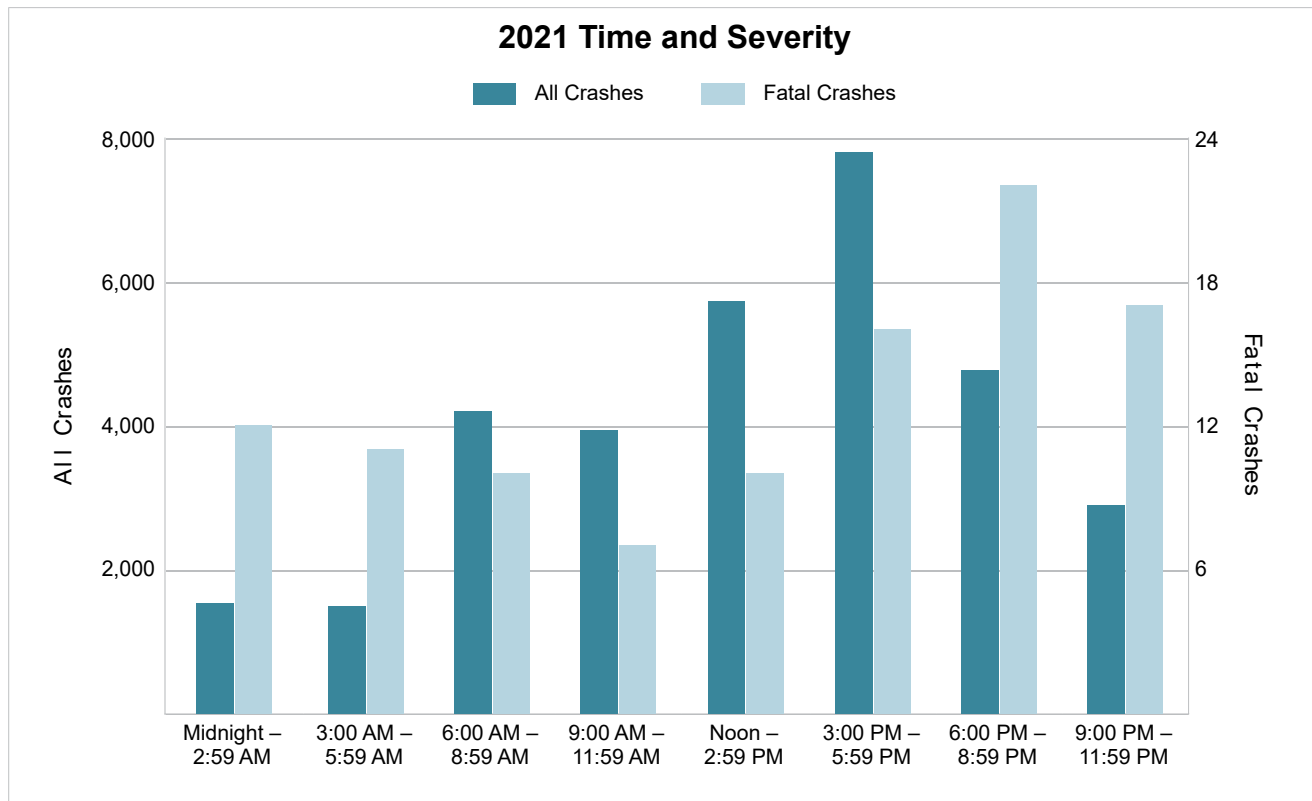
## 5-Year Trend Fatal Crashes by Time of Day



# MSP Post 61 - Grand Rapids (continued)

## 2021 - Time and Severity

Time of Day	All Crashes		Fatal Crashes		Injury Crashes			PDO Crashes
	Number	% of Total	Number	% of Fatal	A	B	C	Number
Midnight – 2:59 AM	1,529	4.7	12	11.4	41	109	153	1,214
3:00 AM – 5:59 AM	1,494	4.6	11	10.5	29	79	130	1,245
6:00 AM – 8:59 AM	4,197	12.9	10	9.5	44	191	428	3,524
9:00 AM – 11:59 AM	3,934	12.1	7	6.7	64	219	450	3,194
Noon – 2:59 PM	5,728	17.7	10	9.5	98	316	779	4,525
3:00 PM – 5:59 PM	7,799	24.1	16	15.2	110	431	1,037	6,205
6:00 PM – 8:59 PM	4,766	14.7	22	21.0	92	232	521	3,899
9:00 PM – 11:59 PM	2,889	8.9	17	16.2	71	144	308	2,349
Unknown	79	0.2	0	0.0	0	0	1	78
<b>Total</b>	<b>32,415</b>	<b>100.0</b>	<b>105</b>	<b>100.0</b>	<b>549</b>	<b>1,721</b>	<b>3,807</b>	<b>26,233</b>

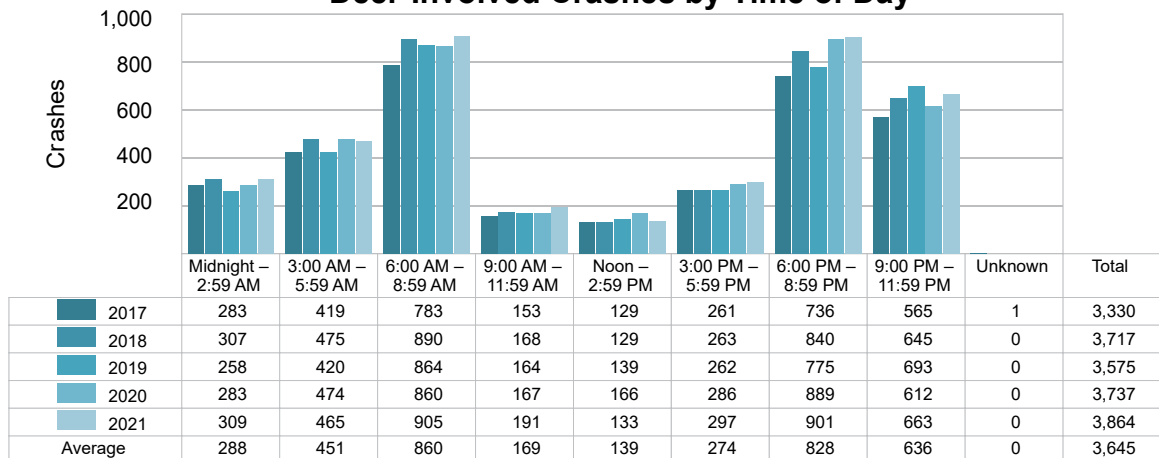




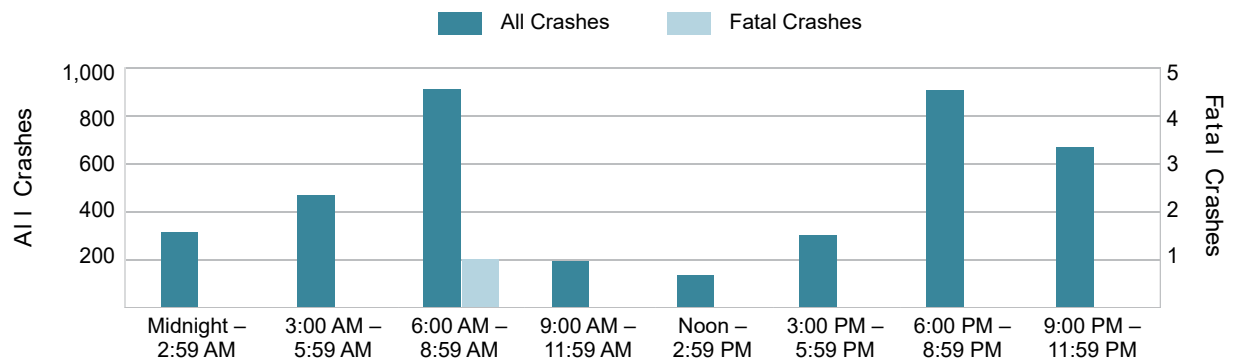
## 5-Year Trend - Deer-Involved Crashes by Time of Day

Time of Day	2017		2018		2019		2020		2021	
	Total Crashes	Fatal Crashes	Total Crashes	Fatal Crashes	Total Crashes	Fatal Crashes	Total Crashes	Fatal Crashes	Total Crashes	Fatal Crashes
Midnight – 2:59 AM	283	0	307	0	258	0	283	0	309	0
3:00 AM – 5:59 AM	419	0	475	1	420	0	474	0	465	0
6:00 AM – 8:59 AM	783	1	890	0	864	0	860	0	905	1
9:00 AM – 11:59 AM	153	0	168	0	164	0	167	0	191	0
Noon – 2:59 PM	129	0	129	0	139	0	166	0	133	0
3:00 PM – 5:59 PM	261	1	263	0	262	1	286	0	297	0
6:00 PM – 8:59 PM	736	0	840	0	775	0	889	0	901	0
9:00 PM – 11:59 PM	565	0	645	0	693	0	612	0	663	0
Unknown	1	0	0	0	0	0	0	0	0	0
<b>Total</b>	<b>3,330</b>	<b>2</b>	<b>3,717</b>	<b>1</b>	<b>3,575</b>	<b>1</b>	<b>3,737</b>	<b>0</b>	<b>3,864</b>	<b>1</b>

## 5-Year Trend Deer-Involved Crashes by Time of Day



## 2021 Time and Severity of Deer-Involved Crashes

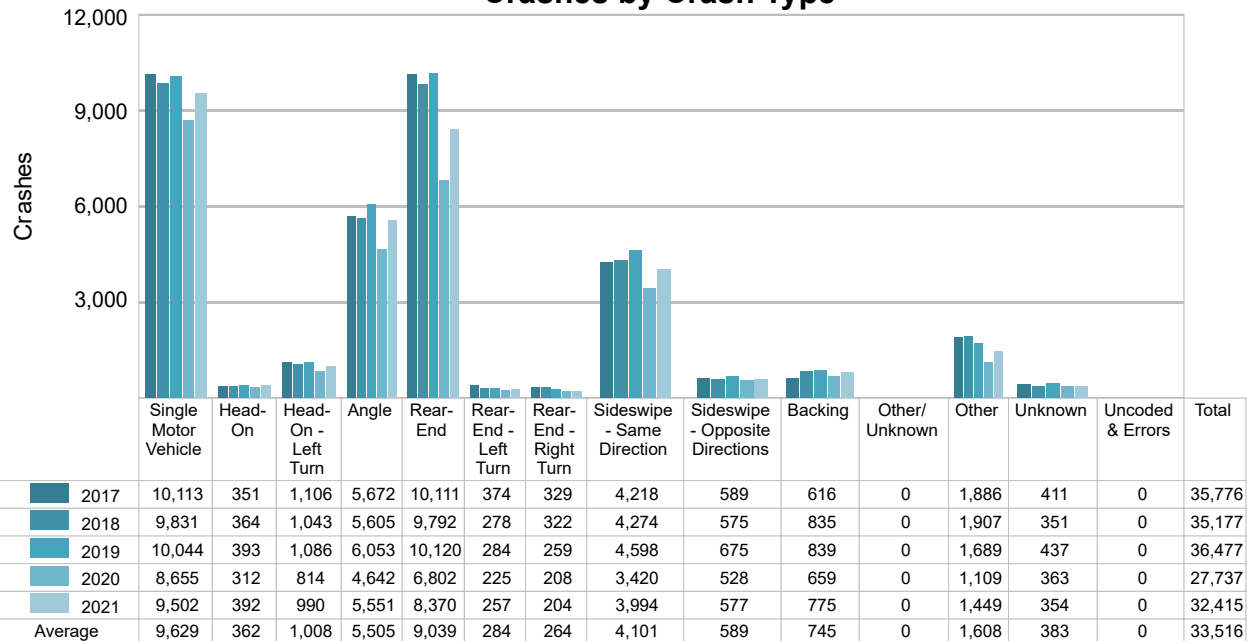


# MSP Post 61 - Grand Rapids (continued)

## 5-Year Trend - Crashes by Crash Type

Crash Type	2017		2018		2019		2020		2021	
	Total Crashes	Fatal Crashes	Total Crashes	Fatal Crashes	Total Crashes	Fatal Crashes	Total Crashes	Fatal Crashes	Total Crashes	Fatal Crashes
Single Motor Vehicle	10,113	41	9,831	40	10,044	39	8,655	42	9,502	52
Head-On	351	9	364	10	393	11	312	9	392	12
Head-On - Left Turn	1,106	4	1,043	6	1,086	7	814	7	990	8
Angle	5,672	26	5,605	27	6,053	22	4,642	23	5,551	18
Rear-End	10,111	8	9,792	11	10,120	8	6,802	6	8,370	5
Rear-End - Left Turn	374	1	278	2	284	0	225	1	257	1
Rear-End - Right Turn	329	0	322	0	259	0	208	0	204	0
Sideswipe - Same Direction	4,218	4	4,274	1	4,598	0	3,420	1	3,994	4
Sideswipe - Opposite Directions	589	0	575	0	675	2	528	1	577	1
Backing	616	0	835	0	839	0	659	0	775	0
Other/Unknown	0	0	0	0	0	0	0	0	0	0
Other	1,886	5	1,907	3	1,689	3	1,109	2	1,449	4
Unknown	411	0	351	0	437	0	363	0	354	0
Uncoded & Errors	0	0	0	0	0	0	0	0	0	0
<b>Total</b>	<b>35,776</b>	<b>98</b>	<b>35,177</b>	<b>100</b>	<b>36,477</b>	<b>92</b>	<b>27,737</b>	<b>92</b>	<b>32,415</b>	<b>105</b>

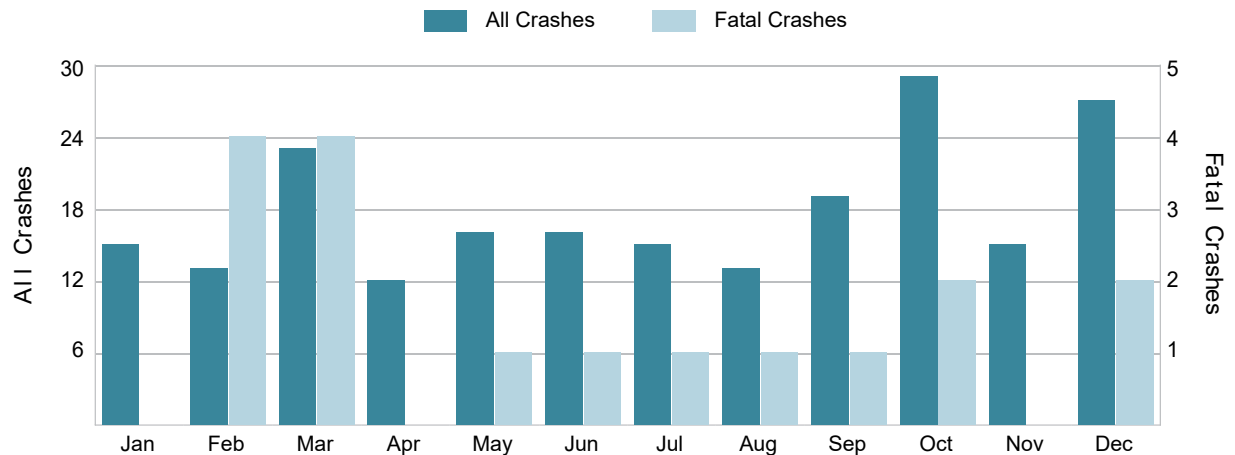
## 5-Year Trend Crashes by Crash Type



## 5-Year Trend - Pedestrian-Involved Crashes by Month

Month	2017		2018		2019		2020		2021	
	Total Crashes	Fatal Crashes	Total Crashes	Fatal Crashes	Total Crashes	Fatal Crashes	Total Crashes	Fatal Crashes	Total Crashes	Fatal Crashes
January	28	1	17	2	25	0	19	1	15	0
February	32	2	18	0	14	0	22	0	13	4
March	18	2	26	1	10	0	11	0	23	4
April	14	1	13	0	20	1	7	1	12	0
May	14	0	20	2	19	1	8	0	16	1
June	20	1	17	0	19	1	9	0	16	1
July	19	0	18	0	20	1	25	3	15	1
August	24	2	21	0	22	1	25	3	13	1
September	35	0	18	2	24	0	24	3	19	1
October	45	1	25	1	38	4	18	2	29	2
November	21	2	25	0	22	2	21	0	15	0
December	24	1	25	1	34	3	23	1	27	2
<b>Total</b>	<b>294</b>	<b>13</b>	<b>243</b>	<b>9</b>	<b>267</b>	<b>14</b>	<b>212</b>	<b>14</b>	<b>213</b>	<b>17</b>

## 2021 Pedestrian-Involved Crashes by Month

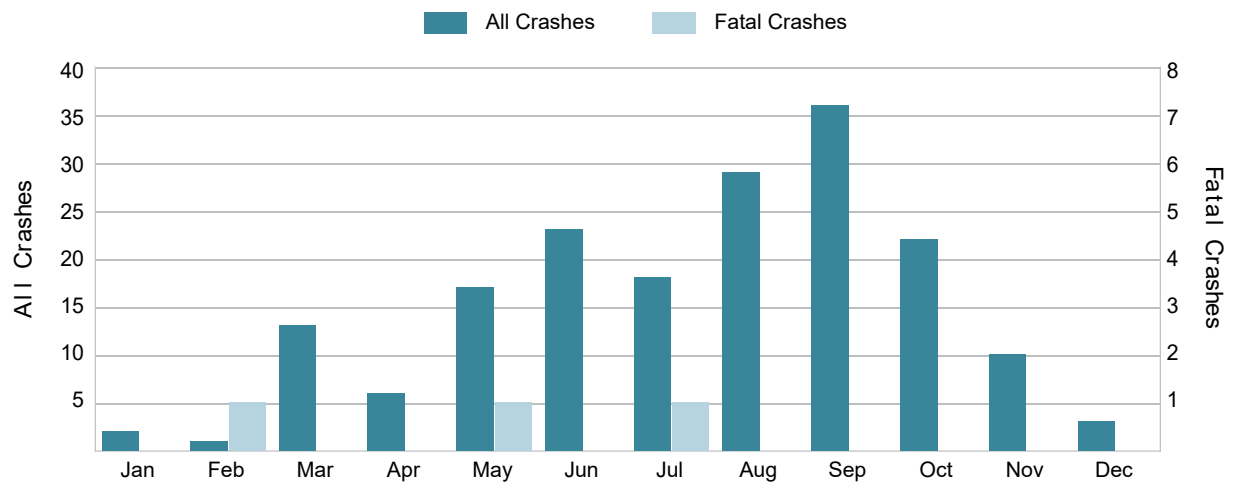


# MSP Post 61 - Grand Rapids (continued)

## 5-Year Trend - Bicyclist-Involved Crashes by Month

Month	2017		2018		2019		2020		2021	
	Total Crashes	Fatal Crashes	Total Crashes	Fatal Crashes	Total Crashes	Fatal Crashes	Total Crashes	Fatal Crashes	Total Crashes	Fatal Crashes
January	4	0	1	1	5	0	5	0	2	0
February	8	0	2	0	1	0	2	0	1	1
March	7	0	7	0	5	0	5	0	13	0
April	13	0	18	0	9	0	11	1	6	0
May	33	0	19	0	29	1	12	0	17	1
June	44	1	36	1	27	1	26	1	23	0
July	33	1	34	0	41	1	24	0	18	1
August	37	1	36	1	30	0	31	0	29	0
September	41	1	31	1	37	1	20	0	36	0
October	36	0	19	0	16	0	15	0	22	0
November	10	0	8	0	7	0	10	0	10	0
December	8	1	9	0	3	0	5	1	3	0
<b>Total</b>	<b>274</b>	<b>5</b>	<b>220</b>	<b>4</b>	<b>210</b>	<b>4</b>	<b>166</b>	<b>3</b>	<b>180</b>	<b>3</b>

## 2021 Bicyclist-Involved Crashes by Month



## 2021 - Reported Motor Vehicle Crashes by County

County	Crashes												
	Total	Fatal	Injury	Property Damage	Inter-State	US Route	State Route	Local Street	Alcohol-Involved	Drug-Involved	Deer-Involved	Pedestrian-Involved	Bicyclist-Involved
Kent	20,091	61	3,944	16,086	1,395	1,520	4,135	13,035	786	195	1,810	166	114
Muskegon	4,673	17	840	3,816	87	794	589	3,189	172	71	663	23	18
Ottawa	7,651	27	1,293	6,331	683	872	790	5,299	283	85	1,391	24	48
Total	32,415	105	6,077	26,233	2,165	3,186	5,514	21,523	1,241	351	3,864	213	180

## 2021 - People in Reported Motor Vehicle Crashes by County

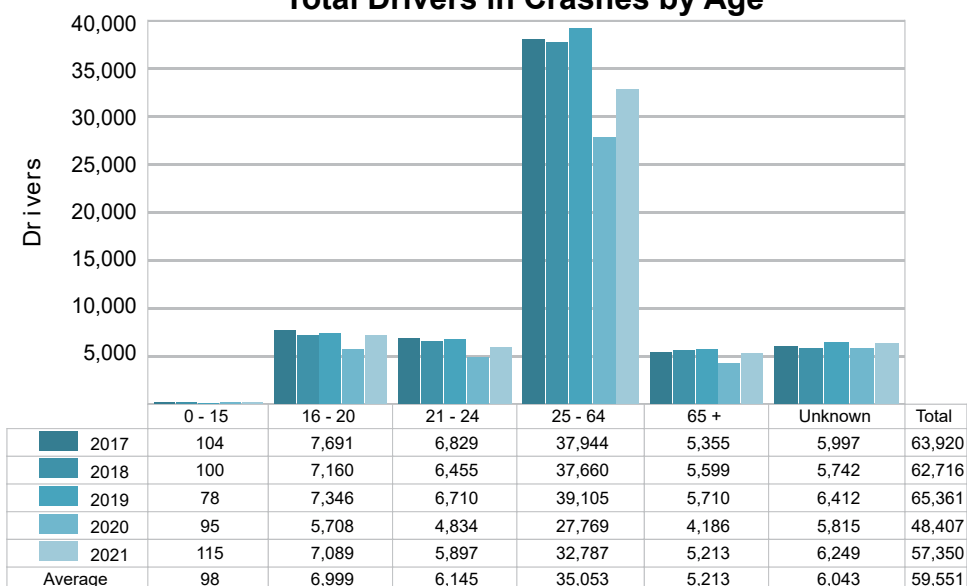
County	People					
	Fatalities	Suspected Serious Injuries	Suspected Minor Injuries	Possible Injuries	No Injuries	Uncoded & Errors
Kent	66	917	2,760	6,483	32,692	4,780
Muskegon	19	176	694	1,117	7,425	529
Ottawa	29	225	904	2,116	12,679	746
<b>Total</b>	<b>114</b>	<b>1,318</b>	<b>4,358</b>	<b>9,716</b>	<b>52,796</b>	<b>6,055</b>

# MSP Post 61 - Grand Rapids (continued)

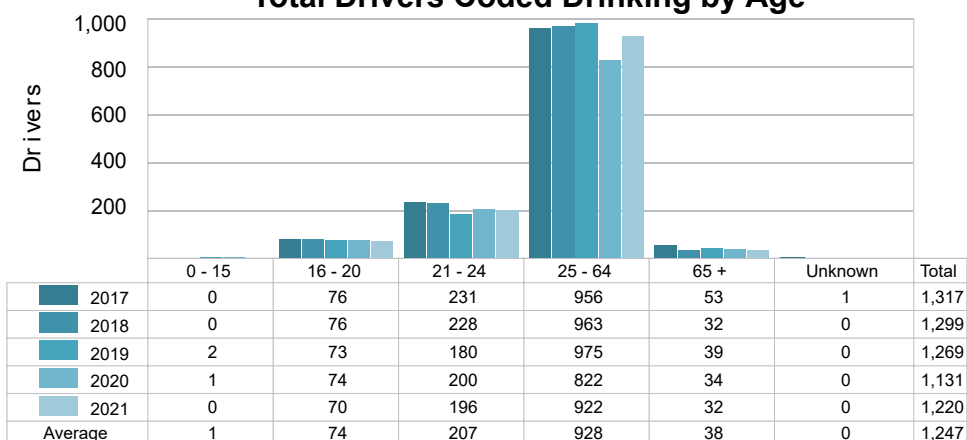
## 5-Year Trend - Drivers in Crashes Coded Drinking by Driver Age

Driver Age	2017		2018		2019		2020		2021	
	Total Drivers in Crashes	Total Drivers Coded Drinking	Total Drivers in Crashes	Total Drivers Coded Drinking	Total Drivers in Crashes	Total Drivers Coded Drinking	Total Drivers in Crashes	Total Drivers Coded Drinking	Total Drivers in Crashes	Total Drivers Coded Drinking
0 - 15	104	0	100	0	78	2	95	1	115	0
16 - 20	7,691	76	7,160	76	7,346	73	5,708	74	7,089	70
21 - 24	6,829	231	6,455	228	6,710	180	4,834	200	5,897	196
25 - 64	37,944	956	37,660	963	39,105	975	27,769	822	32,787	922
65 +	5,355	53	5,599	32	5,710	39	4,186	34	5,213	32
Unknown	5,997	1	5,742	0	6,412	0	5,815	0	6,249	0
<b>Total</b>	<b>63,920</b>	<b>1,317</b>	<b>62,716</b>	<b>1,299</b>	<b>65,361</b>	<b>1,269</b>	<b>48,407</b>	<b>1,131</b>	<b>57,350</b>	<b>1,220</b>

### 5-Year Trend Total Drivers in Crashes by Age



### 5-Year Trend Total Drivers Coded Drinking by Age



### 2021 - Bodily Alcohol Concentration (BAC) Results Among All Vehicle Drivers in Alcohol-Involved Crashes by Age

Age Group	Drivers				BAC Result Range for Drivers Coded Drinking				
	Total Drivers in Alcohol-Involved Crashes	Total Drivers Tested in all Crashes	Total Drivers Coded Drinking, Tested	Total Drivers Coded Drinking	BAC = 0.00	BAC 0.01 g/dL to 0.07 g/dL	BAC 0.08 g/dL to 0.16 g/dL	BAC 0.17 g/dL and Above	BAC Not Reported
0 - 15	0	0	0	0	0	0	0	0	0
16 - 20	118	105	62	70	0	10	20	15	25
21 - 24	259	220	172	196	0	16	63	48	69
25 - 64	1,258	991	784	922	1	50	204	268	399
65 +	76	51	29	32	0	7	10	3	12
Unknown	192	0	0	0	0	0	0	0	0
<b>Total</b>	<b>1,903</b>	<b>1,367</b>	<b>1,047</b>	<b>1,220</b>	<b>1</b>	<b>83</b>	<b>297</b>	<b>334</b>	<b>505</b>

Notes: BAC measured in grams (g) per deciliter (dL).

BAC may not be reported if drivers are not tested or if the results are not available immediately (as in the case of a blood test).

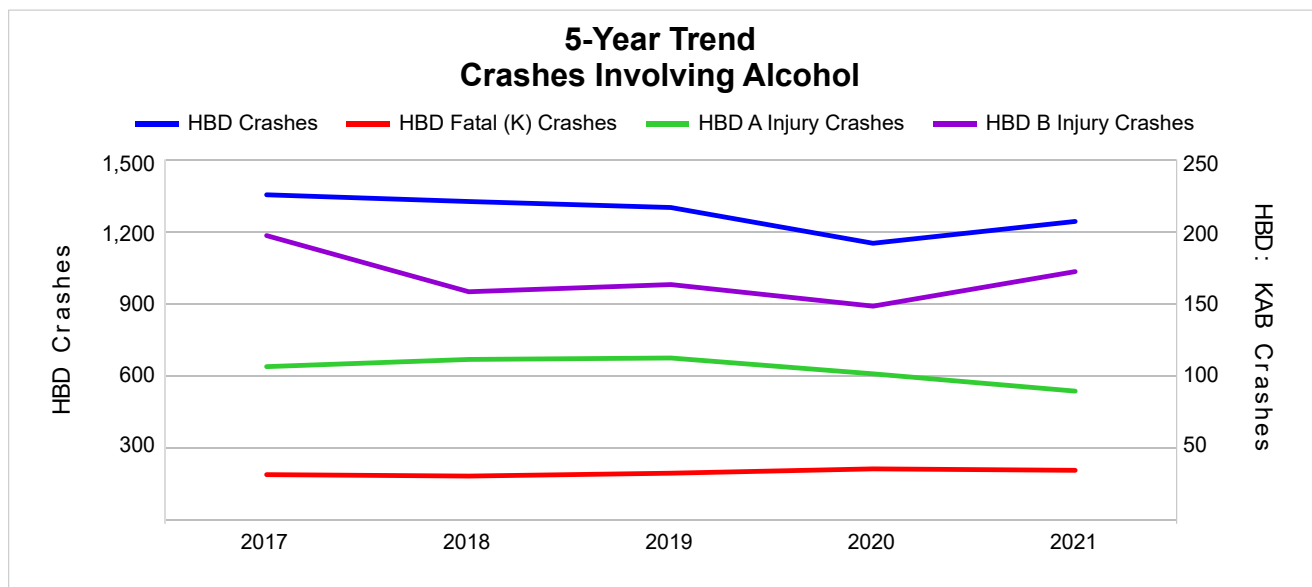
A driver may be coded by the officer as drinking even though no test is administered.

### 5-Year Trend - Crashes Involving Alcohol

Year	All Crashes	HBD Crashes	% HBD	Fatal Crashes	HBD Fatal Crashes	% HBD	A Injury Crashes	HBD A Injury Crashes	% HBD	B Injury Crashes	HBD B Injury Crashes	% HBD
2017	35,776	1,352	3.8	98	31	31.6	603	106	17.6	1,648	197	12.0
2018	35,177	1,324	3.8	100	30	30.0	576	111	19.3	1,604	158	9.9
2019	36,477	1,299	3.6	92	32	34.8	567	112	19.8	1,548	163	10.5
2020	27,737	1,150	4.1	92	35	38.0	500	101	20.2	1,423	148	10.4
2021	32,415	1,241	3.8	105 **	34	32.4	549	89 *	16.2 *	1,721 **	172	10.0

Note: \* Indicates that the most recent year is the lowest number or percentage reported in the 5-year period in that column.

\*\* Indicates that the most recent year is the highest number or percentage reported in the 5-year period in that column.



Note: Had-Been-Drinking (HBD)

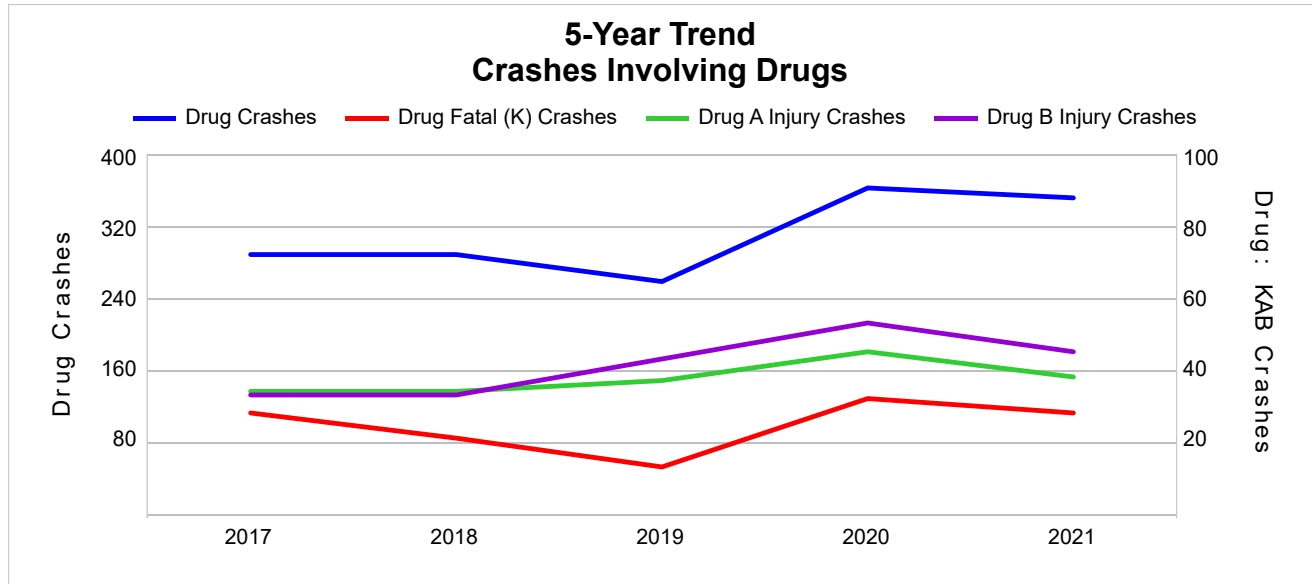
# MSP Post 61 - Grand Rapids (continued)

## 5-Year Trend - Crashes Involving Drugs

Year	All Crashes	Drug Crashes	% Drug	Fatal Crashes	Drug Fatal Crashes	% Drug	A Injury Crashes	Drug A Injury Crashes	% Drug	B Injury Crashes	Drug B Injury Crashes	% Drug
2017	35,776	288	0.8	98	28	28.6	603	34	5.6	1,648	33	2.0
2018	35,177	288	0.8	100	21	21.0	576	34	5.9	1,604	33	2.1
2019	36,477	258	0.7	92	13	14.1	567	37	6.5	1,548	43	2.8
2020	27,737	362	1.3	92	32	34.8	500	45	9.0	1,423	53	3.7
2021	32,415	351	1.1	105 **	28	26.7	549	38	6.9	1,721 **	45	2.6

Note: \* Indicates that the most recent year is the lowest number or percentage reported in the 5-year period in that column.

\*\* Indicates that the most recent year is the highest number or percentage reported in the 5-year period in that column.



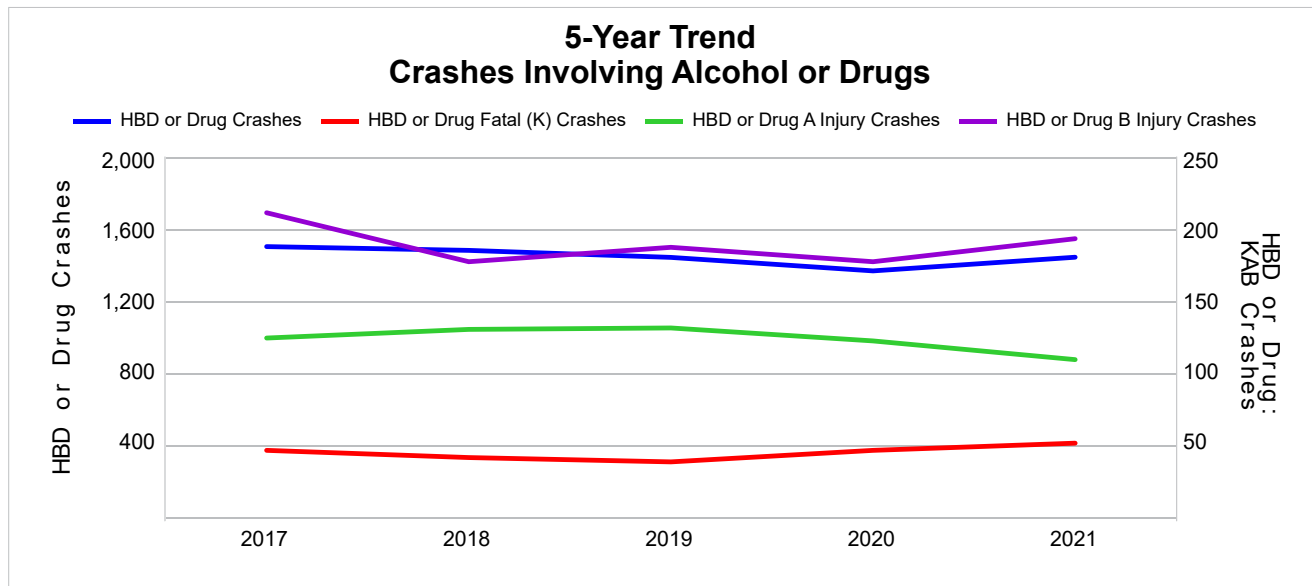


## 5-Year Trend - Crashes Involving Alcohol or Drugs

Year	All Crashes	HBD or Drug Crashes	% HBD or Drug	Fatal Crashes	HBD or Drug Fatal Crashes	% HBD or Drug	A Injury Crashes	HBD or Drug A Injury Crashes	% HBD or Drug	B Injury Crashes	HBD or Drug B Injury Crashes	% HBD or Drug
2017	35,776	1,500	4.2	98	46	46.9	603	124	20.6	1,648	211	12.8
2018	35,177	1,479	4.2	100	41	41.0	576	130	22.6	1,604	177	11.0
2019	36,477	1,440	3.9	92	38	41.3	567	131	23.1	1,548	187	12.1
2020	27,737	1,365	4.9	92	46	50.0	500	122	24.4	1,423	177	12.4
2021	32,415	1,441	4.4	105 **	51 **	48.6	549	109 *	19.9 *	1,721 **	193	11.2

Note: \* Indicates that the most recent year is the lowest number or percentage reported in the 5-year period in that column.

\*\* Indicates that the most recent year is the highest number or percentage reported in the 5-year period in that column.



Note: Had-Been-Drinking (HBD)

# MSP Post 61 - Grand Rapids (continued)

## 2021 - Restraints Worn Among Vehicle Drivers and Injured Passengers by Vehicle Type

Vehicle Type	Total Occupants			Fatalities			A - Suspected Serious			B - Suspected Minor			C - Possible Injury			No Injury		
	Total	Used Restraint	%	Total	Used Restraint	%	Total	Used Restraint	%	Total	Used Restraint	%	Total	Used Restraint	%	Total	Used Restraint	%
Passenger Car, SUV, Van	49,006	42,422	86.6	61	31	50.8	443	332	74.9	1,652	1,455	88.1	4,804	4,526	94.2	38,370	36,078	94.0
Motor Home	143	119	83.2	0	0	0.0	0	0	0.0	7	5	71.4	10	10	100.0	114	104	91.2
Pickup Truck	5,576	4,880	87.5	11	4	36.4	49	27	55.1	149	132	88.6	289	282	97.6	4,649	4,435	95.4
Small Truck Under 10,000 lbs. GVWR	235	189	80.4	0	0	0.0	1	1	100.0	3	3	100.0	17	15	88.2	188	170	90.4
Motorcycle	387	213	55.0	18	7	38.9	83	50	60.2	133	74	55.6	55	36	65.5	78	46	59.0
Moped/Goped	79	30	38.0	0	0	0.0	15	2	13.3	24	10	41.7	23	11	47.8	14	7	50.0
Go-Cart/Golf Cart	2	0	0.0	0	0	0.0	0	0	0.0	0	0	0.0	0	0	0.0	2	0	0.0
Snowmobile	3	1	33.3	1	0	0.0	0	0	0.0	0	0	0.0	1	1	100.0	0	0	0.0
Off-Road Vehicle (ORV)/All-Terrain Vehicle (ATV)	24	4	16.7	0	0	0.0	5	2	40.0	10	0	0.0	4	0	0.0	3	2	66.7
Other (non-registered farm equipment, construction equipment, snow plows, etc.)	176	76	43.2	1	0	0.0	4	0	0.0	5	3	60.0	13	5	38.5	107	68	63.6
Truck/Bus (over 10,000 lbs. GVWR/ 8+ occupants/ hazmat placard)	1,748	1,608	92.0	2	0	0.0	7	6	85.7	16	14	87.5	54	37	68.5	1,610	1,551	96.3
Uncoded & Errors	1,808	0	0.0	0	0	0.0	0	0	0.0	0	0	0.0	0	0	0.0	38	0	0.0
<b>Total</b>	<b>59,187</b>	<b>49,542</b>	<b>83.7</b>	<b>94</b>	<b>42</b>	<b>44.7</b>	<b>607</b>	<b>420</b>	<b>69.2</b>	<b>1,999</b>	<b>1,696</b>	<b>84.8</b>	<b>5,270</b>	<b>4,923</b>	<b>93.4</b>	<b>45,173</b>	<b>42,461</b>	<b>94.0</b>

Note: Restraint Use includes shoulder belt only used, lap belt only used, both lap and shoulder belts used, child restraint used, restraint failure, and helmet worn.

## 2021 - Restraints Worn Among Vehicle Drivers and Injured Passengers by Age

Age Group	Total Occupants			Fatalities			A - Suspected Serious			B - Suspected Minor			C - Possible Injury			No Injury		
	Total	Used Restraint	%	Total	Used Restraint	%	Total	Used Restraint	%	Total	Used Restraint	%	Total	Used Restraint	%	Total	Used Restraint	%
0 - 15	620	528	85.2	2	0	0.0	32	16	50.0	137	112	81.8	361	333	92.2	87	67	77.0
16 - 20	7,409	6,993	94.4	13	3	23.1	84	49	58.3	324	272	84.0	720	669	92.9	6,260	6,000	95.8
21 - 24	6,043	5,649	93.5	8	6	75.0	50	29	58.0	232	191	82.3	559	518	92.7	5,174	4,905	94.8
25 - 64	33,470	31,200	93.2	53	17	32.1	366	261	71.3	1,080	909	84.2	3,050	2,850	93.4	28,793	27,163	94.3
65 +	5,395	5,169	95.8	18	16	88.9	74	65	87.8	226	212	93.8	575	552	96.0	4,494	4,324	96.2
Unknown	6,250	3	0.0	0	0	0.0	1	0	0.0	0	0	0.0	5	1	20.0	365	2	0.5
<b>Total</b>	<b>59,187</b>	<b>49,542</b>	<b>83.7</b>	<b>94</b>	<b>42</b>	<b>44.7</b>	<b>607</b>	<b>420</b>	<b>69.2</b>	<b>1,999</b>	<b>1,696</b>	<b>84.8</b>	<b>5,270</b>	<b>4,923</b>	<b>93.4</b>	<b>45,173</b>	<b>42,461</b>	<b>94.0</b>

Note: Restraint Use includes shoulder belt only used, lap belt only used, both lap and shoulder belts used, child restraint used, restraint failure, and helmet worn.

## 5-Year Trend - Restraint Use Among Drivers

Restraint Use	2017			2018			2019			2020			2021		
	Drivers	Fatal Drivers	Injured Drivers	Drivers	Fatal Drivers	Injured Drivers	Drivers	Fatal Drivers	Injured Drivers	Drivers	Fatal Drivers	Injured Drivers	Drivers	Fatal Drivers	Injured Drivers
No Belts Available	84	0	12	94	0	12	93	1	15	75	0	11	94	1	17
Shoulder Belt Only Used	260	0	34	233	0	35	307	0	36	270	0	36	226	0	33
Lap Belt Only Used	210	0	31	147	0	19	122	0	8	86	0	7	77	0	8
Both Lap & Shoulder Belt Used	54,386	34	5,484	53,781	40	5,498	55,632	33	5,256	39,805	27	4,158	47,406	26	5,248
No Belts Used	327	15	110	263	14	106	246	10	102	204	16	96	270	18	132
Child Restraint Used - Forward Facing	0	0	0	0	0	0	0	0	0	0	0	0	0	0	0
Child Restraint Not Used, Unavailable or Improper Use	0	0	0	0	0	0	0	0	0	0	0	0	0	0	0
Child Restraint Used - Rear Facing	0	0	0	0	0	0	0	0	0	0	0	0	0	0	0
Child Restraint Used - Booster Seat	0	0	0	0	0	0	0	0	0	0	0	0	0	0	0
Restraint Failure	34	0	7	31	0	2	19	0	1	15	0	3	12	0	0
Restraint Use Unknown	8,135	9	180	7,764	5	202	8,558	6	197	7,523	7	213	8,838	12	301
Helmet Worn	258	10	174	250	14	177	239	5	162	229	7	168	233	7	171
Helmet Not Worn	137	4	106	130	2	107	124	12	91	181	6	152	170	8	134
Helmet Use Unknown	20	0	10	14	0	9	18	0	10	17	2	11	24	3	14
Uncoded & Errors	69	0	0	9	0	0	3	0	0	2	0	0	0	0	0
<b>Total</b>	<b>63,920</b>	<b>72</b>	<b>6,148</b>	<b>62,716</b>	<b>75</b>	<b>6,167</b>	<b>65,361</b>	<b>67</b>	<b>5,878</b>	<b>48,407</b>	<b>65</b>	<b>4,855</b>	<b>57,350</b>	<b>75</b>	<b>6,058</b>

## 5-Year Trend - Restraint Use Among Drivers Coded Drinking

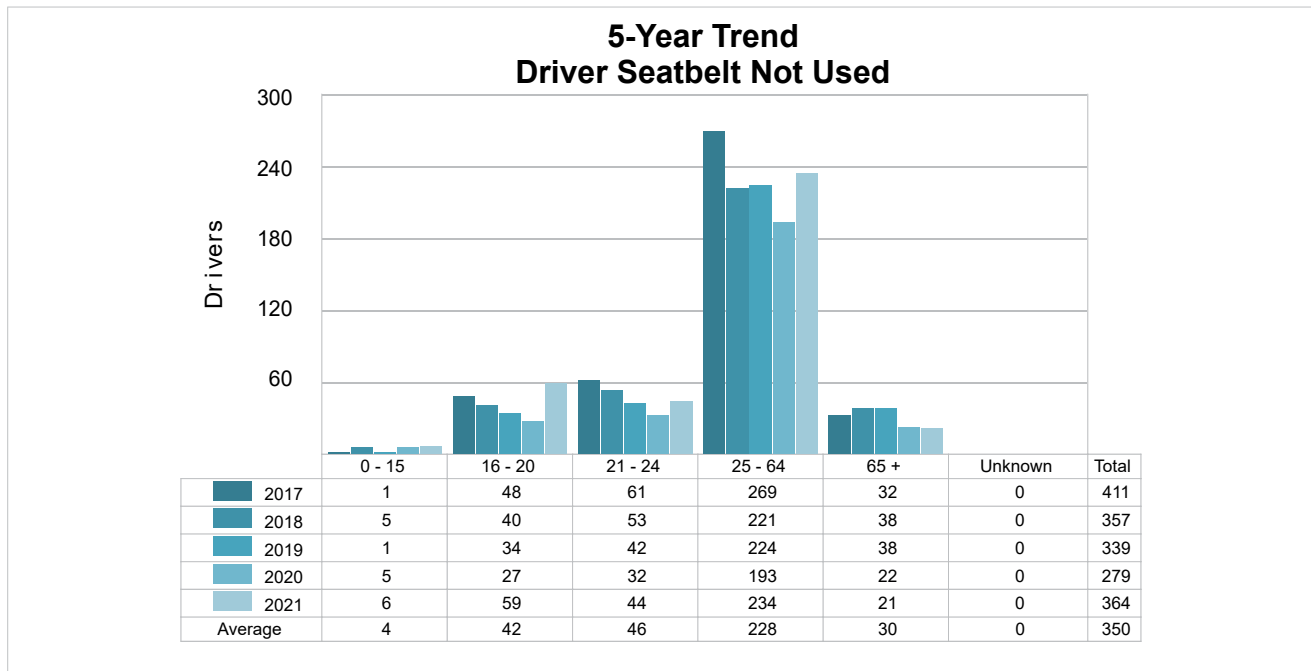
Restraint Use	2017			2018			2019			2020			2021		
	Drivers	Fatal Drivers	Injured Drivers	Drivers	Fatal Drivers	Injured Drivers	Drivers	Fatal Drivers	Injured Drivers	Drivers	Fatal Drivers	Injured Drivers	Drivers	Fatal Drivers	Injured Drivers
No Belts Available	4	0	3	1	0	0	2	0	1	1	0	1	3	0	3
Shoulder Belt Only Used	4	0	3	5	0	1	5	0	0	4	0	0	8	0	3
Lap Belt Only Used	3	0	0	1	0	1	0	0	0	1	0	0	2	0	1
Both Lap & Shoulder Belt Used	959	5	246	940	9	218	907	5	212	777	6	195	889	3	218
No Belts Used	49	7	30	45	7	28	40	5	25	51	7	35	55	9	31
Child Restraint Used - Forward Facing	0	0	0	0	0	0	0	0	0	0	0	0	0	0	0
Child Restraint Not Used, Unavailable or Improper Use	0	0	0	0	0	0	0	0	0	0	0	0	0	0	0
Child Restraint Used - Rear Facing	0	0	0	0	0	0	0	0	0	0	0	0	0	0	0
Child Restraint Used - Booster Seat	0	0	0	0	0	0	0	0	0	0	0	0	0	0	0
Restraint Failure	1	0	0	2	0	0	0	0	0	0	0	0	0	0	0
Restraint Use Unknown	262	3	48	272	2	65	275	4	59	256	4	80	222	4	61
Helmet Worn	12	1	10	16	2	10	9	1	8	10	1	7	14	1	13
Helmet Not Worn	21	1	18	17	1	16	26	4	21	29	2	23	24	3	17
Helmet Use Unknown	2	0	2	0	0	0	5	0	3	2	1	0	3	0	3
Uncoded & Errors	0	0	0	0	0	0	0	0	0	0	0	0	0	0	0
<b>Total</b>	<b>1,317</b>	<b>17</b>	<b>360</b>	<b>1,299</b>	<b>21</b>	<b>339</b>	<b>1,269</b>	<b>19</b>	<b>329</b>	<b>1,131</b>	<b>21</b>	<b>341</b>	<b>1,220</b>	<b>20</b>	<b>350</b>

# MSP Post 61 - Grand Rapids (continued)

## 5-Year Trend - Seatbelt Not Used Among Drivers by Age

Age Group	2017			2018			2019			2020			2021		
	Drivers	Fatal Drivers	Injured Drivers	Drivers	Fatal Drivers	Injured Drivers	Drivers	Fatal Drivers	Injured Drivers	Drivers	Fatal Drivers	Injured Drivers	Drivers	Fatal Drivers	Injured Drivers
0 - 15	1	0	0	5	0	0	1	0	0	5	0	1	6	0	2
16 - 20	48	2	19	40	0	19	34	0	9	27	2	13	59	4	27
21 - 24	61	3	17	53	2	19	42	1	17	32	1	14	44	0	21
25 - 64	269	9	76	221	11	71	224	7	77	193	11	76	234	14	90
65 +	32	1	10	38	1	9	38	3	14	22	2	3	21	1	9
Unknown	0	0	0	0	0	0	0	0	0	0	0	0	0	0	0
<b>Total</b>	<b>411</b>	<b>15</b>	<b>122</b>	<b>357</b>	<b>14</b>	<b>118</b>	<b>339</b>	<b>11</b>	<b>117</b>	<b>279</b>	<b>16</b>	<b>107</b>	<b>364</b>	<b>19</b>	<b>149</b>

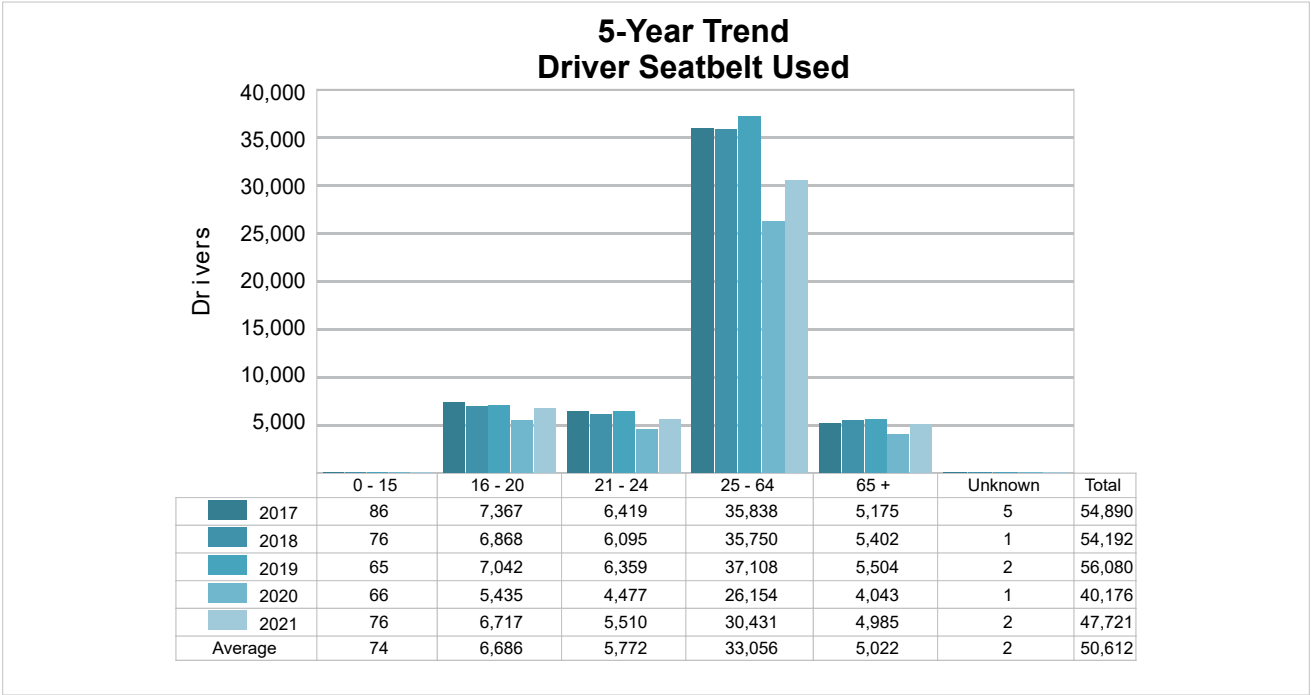
Note: Seatbelt Not Used includes no belts available or no belts used.



5-Year Trend - Seatbelt Used Among Drivers by Age

Age Group	2017			2018			2019			2020			2021		
	Drivers	Fatal Drivers	Injured Drivers	Drivers	Fatal Drivers	Injured Drivers	Drivers	Fatal Drivers	Injured Drivers	Drivers	Fatal Drivers	Injured Drivers	Drivers	Fatal Drivers	Injured Drivers
0 - 15	86	0	6	76	0	4	65	0	10	66	0	11	76	0	11
16 - 20	7,367	4	744	6,868	0	648	7,042	6	597	5,435	1	552	6,717	3	716
21 - 24	6,419	3	567	6,095	3	580	6,359	2	565	4,477	3	429	5,510	4	608
25 - 64	35,838	15	3,605	35,750	27	3,633	37,108	16	3,516	26,154	18	2,707	30,431	9	3,299
65 +	5,175	12	634	5,402	10	689	5,504	9	613	4,043	5	505	4,985	10	655
Unknown	5	0	0	1	0	0	2	0	0	1	0	0	2	0	0
Total	54,890	34	5,556	54,192	40	5,554	56,080	33	5,301	40,176	27	4,204	47,721	26	5,289

Note: Seatbelt Used includes shoulder belt only used, lap belt only used, both lap and shoulder belts used, and restraint failure.



## MSP Post 61 - Grand Rapids (continued)

## 5-Year Trend - Drivers in Crashes by Hazardous Action

Hazardous Action	2017		2018		2019		2020		2021	
	Total Drivers in Crashes	Drivers in Fatal Crashes	Total Drivers in Crashes	Drivers in Fatal Crashes	Total Drivers in Crashes	Drivers in Fatal Crashes	Total Drivers in Crashes	Drivers in Fatal Crashes	Total Drivers in Crashes	Drivers in Fatal Crashes
None	31,968	79	31,489	76	32,759	69	24,883	71	29,294	75
Speed Too Fast	4,211	17	3,935	18	4,610	18	2,654	11	3,274	13
Speed Too Slow	40	1	42	0	33	0	9	0	18	0
Failed to Yield	6,006	14	6,079	17	6,336	25	4,591	12	5,692	10
Disregard Traffic Control	1,433	12	1,426	7	1,462	5	1,319	9	1,493	9
Drove Wrong Way	45	2	34	0	29	0	34	1	38	0
Drove Left of Center	265	7	242	4	276	7	233	3	287	7
Improper Passing	376	1	327	0	318	0	285	1	319	3
Improper Lane Use	1,585	1	1,769	1	1,829	0	1,410	2	1,771	1
Improper Turn	639	0	625	0	681	0	579	1	626	2
Improper/No Signal	57	0	56	0	51	0	35	0	46	0
Improper Backing	981	0	890	0	895	0	654	0	713	0
Unable to Stop in Assured Clear Distance	9,423	9	9,143	12	9,452	7	6,199	6	7,574	4
Other	2,178	3	1,973	4	2,071	6	1,482	4	1,659	6
Unknown	2,882	7	2,994	21	3,040	7	2,630	20	2,997	19
Reckless Driving	261	7	242	6	253	2	310	9	305	8
Careless/Negligent Driving	1,351	4	1,446	6	1,263	9	1,100	9	1,244	15
Uncoded & Errors	219	0	4	1	3	0	0	0	0	0
<b>Total</b>	<b>63,920</b>	<b>164</b>	<b>62,716</b>	<b>173</b>	<b>65,361</b>	<b>155</b>	<b>48,407</b>	<b>159</b>	<b>57,350</b>	<b>172</b>

### Office of Highway Safety Planning

---

Physical Address:  
7150 Harris Drive  
Dimondale, Michigan 48821

Mailing Address:  
P.O. Box 30634  
Lansing, Michigan 48909

Find us on the web:  
[MichiganTrafficCrashFacts.org](http://MichiganTrafficCrashFacts.org)  
[mtcf-info@umich.edu](mailto:mtcf-info@umich.edu)

