



2021

MTCF
Michigan Traffic
Crash Facts

Michigan Traffic Crash Facts

Reporting Criteria

Please pay particular attention to the wording when interpreting the three levels of data gathered for this report.

Crash

The Crash Level analyzes data related to crash events and returns one result per crash.

Examples: Time, weather, and location.

Units

The Units Level analyzes the experience of the units in the crash and returns one result per vehicle, driver, pedestrian, bicyclist, or train.

Examples: Vehicle type, driver condition, and unit events.

People

The People Level analyzes the experience of the people involved in the crash and returns one result per occupant/person/party.

Examples: Age, injury severity, and seat belt or helmet use.

KABCO Injury Indicator:

K = Killed

A = Suspected Serious Injury

B = Suspected Minor Injury

C = Possible Injury

O = No Injury

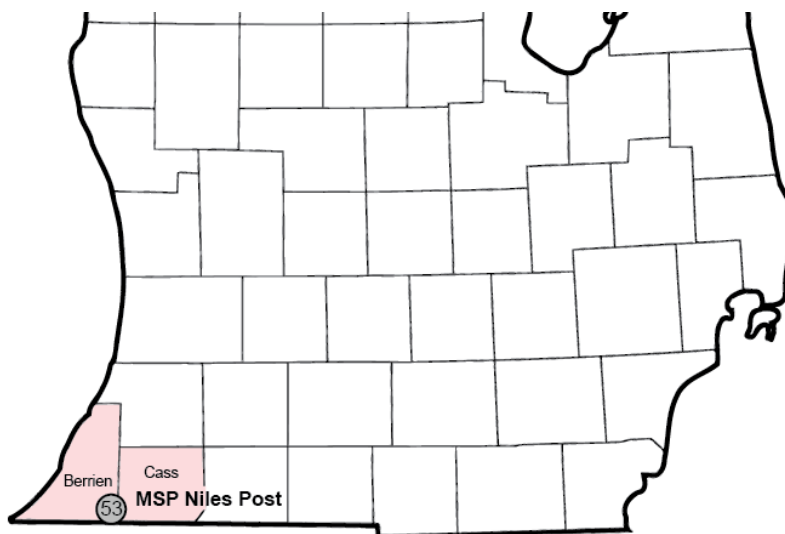
Property Damage Only (PDO)



Michigan State Police (MSP) Post 53 - Niles

2021 Traffic Crash Data & 2017-2021 5-Year Trends

MSP Post 53 - Niles is comprised of Berrien and Cass counties. Trend tables for this report are based on those counties.



Sources:

The crashes in this report occurred on public roadways in Michigan and resulted in injuries, fatalities, or property damage (with \$1,000 as a reporting threshold). The information was gathered from Michigan Traffic Crash Report Forms (UD-10) submitted by local police departments, sheriff's offices, and the Michigan State Police. Other related information was obtained from the departments of Transportation, State, and Community Health.

MSP Post 53 - Niles

- There were 6,010 crashes in Post 53 during 2021. [Page 1]
- A total of 42 fatalities resulted from 40 fatal crashes in 2021 in Post 53. [Page 1]
- There were 1,408 injuries and 1,008 injury crashes. [Page 1]
- There were 4,962 property damage only crashes (no fatalities or injuries). [Page 1]
- November had the highest number of crashes (712). [Pages 1-2]
- August had the highest number of fatal crashes (7) and fatalities (7). [Pages 1-2]
- September had the highest number of injury crashes (99) while June had the highest number of injuries (139). [Page 1]
- November had the highest number of property damage only crashes (613). [Page 1]
- Of all vehicles involved in fatal crashes, 3 (4.6%) were motorcycles. [Page 1]
- Friday was the day of the week with the highest number of crashes (1,007) and fatal crashes (11). [Pages 2-3]
- The 3:00 PM – 5:59 PM time period had the highest number of crashes (1,157). This holds true for every year between 2017 and 2021. The 3:00 PM – 5:59 PM time period had the highest number of fatal crashes (10). [Pages 5-6]
- During the period from 2017 to 2021, the highest number of deer crashes occurred in 2021 (1,670). The 6:00 AM – 8:59 AM time period consistently had the highest number of deer-involved crashes during the five-year period. There were 0 fatal crashes involving deer in 2021. [Page 7]
- Berrien County (73.0%) had the highest number of crashes in Post 53 in 2021, followed by Cass County (27.0%). [Page 11]
- Berrien County (59.5%) had the highest number of fatalities in Post 53 in 2021, followed by Cass County (40.5%). [Page 11]
- The highest number of drivers in crashes (9,257) occurred during 2019 and the highest number of drivers coded drinking in crashes (245) occurred during 2021 within the five year period between 2017 and 2021. [Page 12]
- A total of 246 crashes involved alcohol in 2021. [Page 13]
- Alcohol-involved fatal crashes were the highest in 2017 during the five-year period from 2017 to 2021 at 13. [Page 13]
- A total of 74 crashes, 12 fatal crashes, and 14 suspected injury crashes involved drugs in 2021. [Page 14]
- There were 7,445 drivers wearing seatbelts and 90 drivers not wearing seatbelts in crashes in 2021. Of the 90 drivers not wearing seatbelts, 8 (8.9%) were killed and 41 (45.6%) were injured. [Pages 17-19]
- The most common hazardous action coded for drivers in 2021 in all crashes was failed to yield (876), while the most common hazardous action coded for drivers in fatal crashes was unknown (14). [Page 20]

2021 - Crashes and Injury by Month

Month	Crashes				People	
	Total	Fatal	Injury	Property Damage Only (PDO)	Fatalities	Injuries
January	584	3	59	522	3	79
February	489	2	64	423	2	84
March	380	4	75	301	4	101
April	402	3	87	312	3	120
May	444	2	68	374	2	93
June	477	2	95	380	2	139
July	482	5	94	383	5	133
August	404	7	88	309	7	132
September	459	2	99	358	3	135
October	618	5	92	521	5	124
November	712	4	95	613	4	136
December	559	1	92	466	2	132
Total	6,010	40	1,008	4,962	42	1,408

2021 - Driver Statistics

Age Group	MSP Post 53 - Niles			Driver Rates	
	2019 Population*	Licensed Drivers	Drivers in Crashes	Per 10k Population	Per 10k Licensed
0 - 15	38,714	824	13	3.4	157.8
16 - 20	12,242	8,221	854	697.6	1,038.8
21 - 24	9,178	7,718	770	839.0	997.7
25 - 64	102,783	91,354	5,540	539.0	606.4
65 +	42,271	41,151	1,162	274.9	282.4
Unknown	0	0	547	--	--
Total	205,188	149,268	8,886	433.1	595.3

*2021 Population of Michigan Counties (by single-year of age) not yet available from U.S. Census Bureau.

2021 - Vehicles in Crashes

Vehicle Type	Motor Vehicles		Fatal Crashes		Injury Crashes	PDO Crashes
	Number of Vehicles	% of Total	Number	% of Total	Number	Number
Passenger Car, SUV, Van	7,036	79.2	46	70.8	1,342	5,648
Motor Home	23	0.3	0	0.0	3	20
Pickup Truck	1,076	12.1	11	16.9	198	867
Small Truck Under 10,000 lbs. GVWR	44	0.5	0	0.0	5	39
Motorcycle	63	0.7	3	4.6	51	9
Moped/Goped	9	0.1	0	0.0	8	1
Go-Cart/Golf Cart	0	0.0	0	0.0	0	0
Snowmobile	0	0.0	0	0.0	0	0
Off-Road Vehicle (ORV)/All-Terrain Vehicle (ATV)	6	0.1	1	1.5	3	2
Other (non-registered farm equipment, construction equipment, snow plows, etc.)	33	0.4	0	0.0	9	24
Truck/Bus (over 10,000 lbs. GVWR/8+ occupants/hazmat placard)	390	4.4	4	6.2	73	313
Uncoded & Errors	206	2.3	0	0.0	18	188
Total	8,886	100.0	65	100.0	1,710	7,111

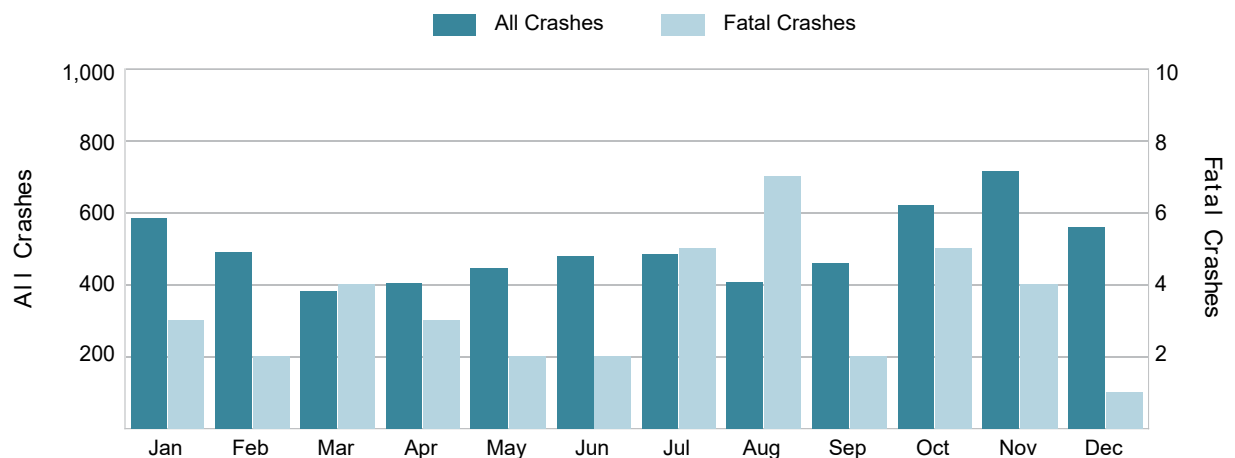
5-Year Trend - Crashes by Month

Month	2017		2018		2019		2020		2021	
	Total Crashes	Fatal Crashes	Total Crashes	Fatal Crashes	Total Crashes	Fatal Crashes	Total Crashes	Fatal Crashes	Total Crashes	Fatal Crashes
January	614	4	726	3	783	5	534	1	584	3
February	320	2	548	0	514	2	589	0	489	2
March	426	1	452	4	425	2	307	0	380	4
April	375	3	429	3	435	2	201	0	402	3
May	438	0	439	0	444	3	316	2	444	2
June	502	1	442	4	451	0	435	2	477	2
July	438	4	471	2	499	3	417	5	482	5
August	432	4	379	1	422	4	476	5	404	7
September	426	4	462	5	426	3	417	1	459	2
October	573	0	527	3	601	4	567	0	618	5
November	565	6	772	1	740	3	609	5	712	4
December	907	2	511	0	514	1	472	0	559	1
Total	6,016	31	6,158	26	6,254	32	5,340	21	6,010	40

5-Year Trend - Crashes by Day of Week

Day	2017		2018		2019		2020		2021	
	Total Crashes	Fatal Crashes	Total Crashes	Fatal Crashes	Total Crashes	Fatal Crashes	Total Crashes	Fatal Crashes	Total Crashes	Fatal Crashes
Monday	849	3	943	6	947	5	776	6	882	9
Tuesday	828	3	815	1	1,037	2	729	1	900	4
Wednesday	862	5	959	1	892	4	847	5	811	3
Thursday	884	3	902	6	827	1	794	2	865	5
Friday	1,013	5	1,032	4	975	7	861	0	1,007	11
Saturday	822	6	812	4	765	6	733	4	822	4
Sunday	758	6	695	4	811	7	600	3	723	4
Total	6,016	31	6,158	26	6,254	32	5,340	21	6,010	40

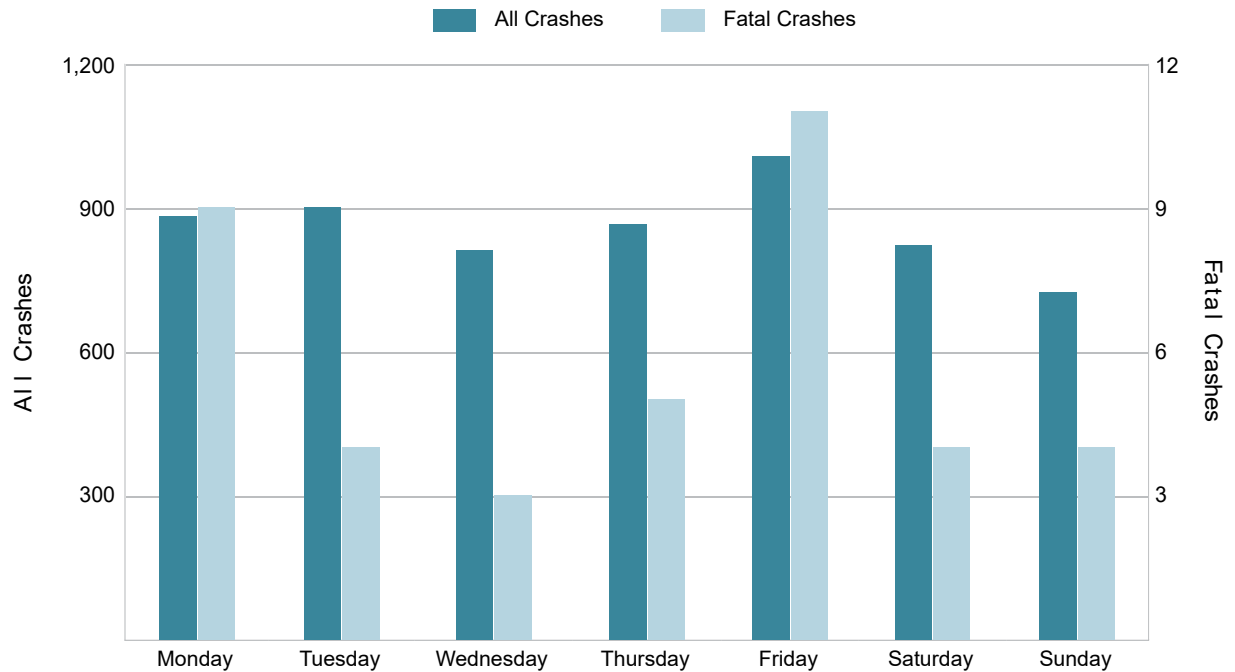
2021 Crashes by Month



2021 - Crashes by Day of Week

Day	All Crashes		Fatal Crashes		Injury Crashes			PDO Crashes
	Number	% of Total	Fatal	% of Fatal	A	B	C	Number
Monday	882	14.7	9	22.5	17	49	80	727
Tuesday	900	15.0	4	10.0	17	46	105	728
Wednesday	811	13.5	3	7.5	16	34	78	680
Thursday	865	14.4	5	12.5	15	41	75	729
Friday	1,007	16.8	11	27.5	21	52	88	835
Saturday	822	13.7	4	10.0	24	39	88	667
Sunday	723	12.0	4	10.0	15	33	75	596
Total	6,010	100.0	40	100.0	125	294	589	4,962

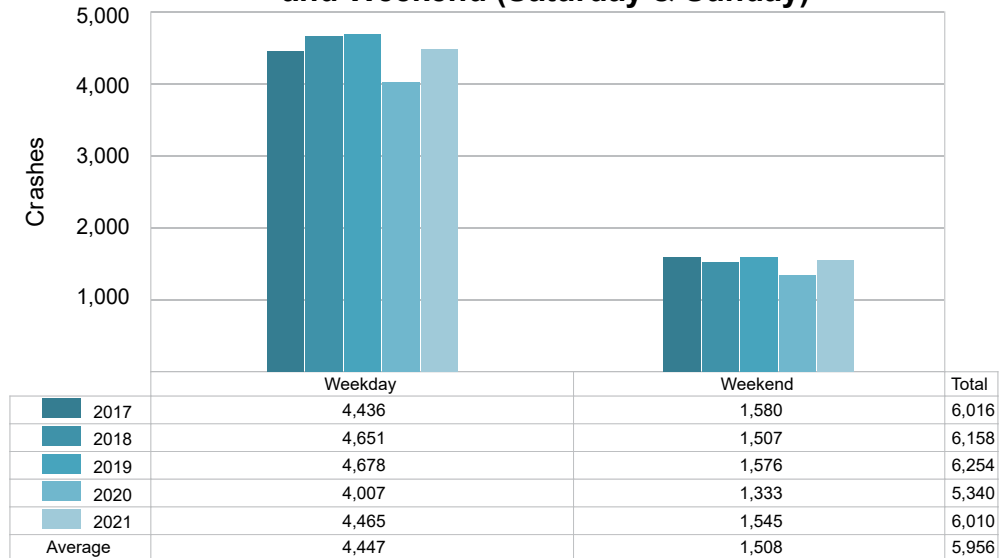
2021 Day of Week and Severity



5-Year Trend - Crashes by Weekday and Weekend

Portion of Week	2017		2018		2019		2020		2021	
	Total Crashes	Fatal Crashes	Total Crashes	Fatal Crashes	Total Crashes	Fatal Crashes	Total Crashes	Fatal Crashes	Total Crashes	Fatal Crashes
Weekday	4,436	19	4,651	18	4,678	19	4,007	14	4,465	32
Weekend	1,580	12	1,507	8	1,576	13	1,333	7	1,545	8
Total	6,016	31	6,158	26	6,254	32	5,340	21	6,010	40

5-Year Crash Trends by Weekday (Monday - Friday) and Weekend (Saturday & Sunday)

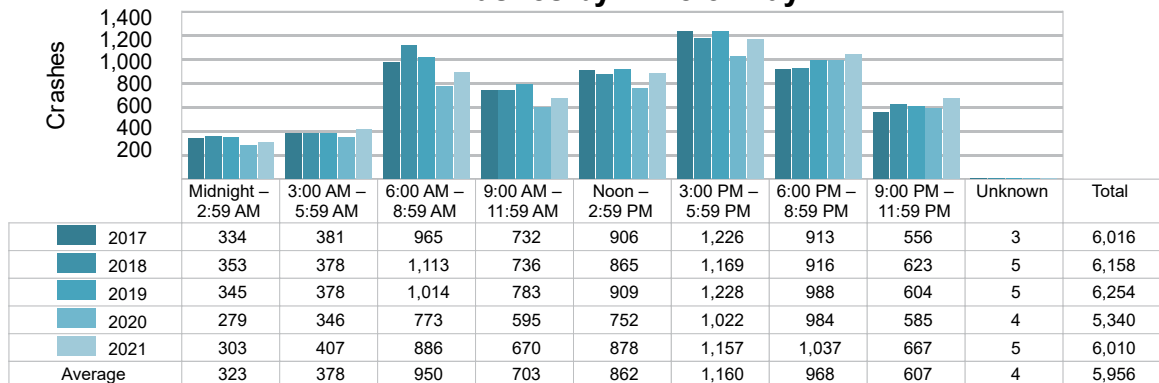


5-Year Trend - Crashes by Time of Day

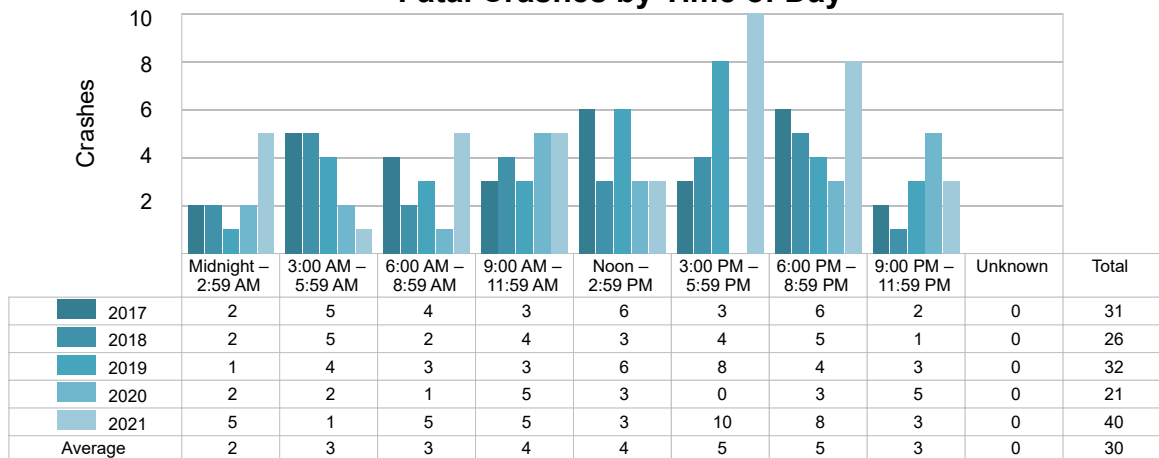
Time of Day	2017		2018		2019		2020		2021	
	Total Crashes	Fatal Crashes	Total Crashes	Fatal Crashes	Total Crashes	Fatal Crashes	Total Crashes	Fatal Crashes	Total Crashes	Fatal Crashes
Midnight – 2:59 AM	334	2	353	2	345	1	279	2	303	5
3:00 AM – 5:59 AM	381	5	378	5	378	4	346	2	407	1
6:00 AM – 8:59 AM	965	4	1,113	2	1,014	3	773	1	886	5
9:00 AM – 11:59 AM	732	3	736	4	783	3	595	5	670	5
Noon – 2:59 PM	906	6	865	3	909	6	752	3	878	3
3:00 PM – 5:59 PM	1,226 †	3	1,169 †	4	1,228 †	8	1,022 †	0	1,157 †	10
6:00 PM – 8:59 PM	913	6	916	5	988	4	984	3	1,037	8
9:00 PM – 11:59 PM	556	2	623	1	604	3	585	5	667	3
Unknown	3	0	5	0	5	0	4	0	5	0
Total	6,016	31	6,158	26	6,254	32	5,340	21	6,010	40

Note: † Indicates that the highest number of total crashes reported in the 5-year period occurred in the same time period.

5-Year Trend Crashes by Time of Day

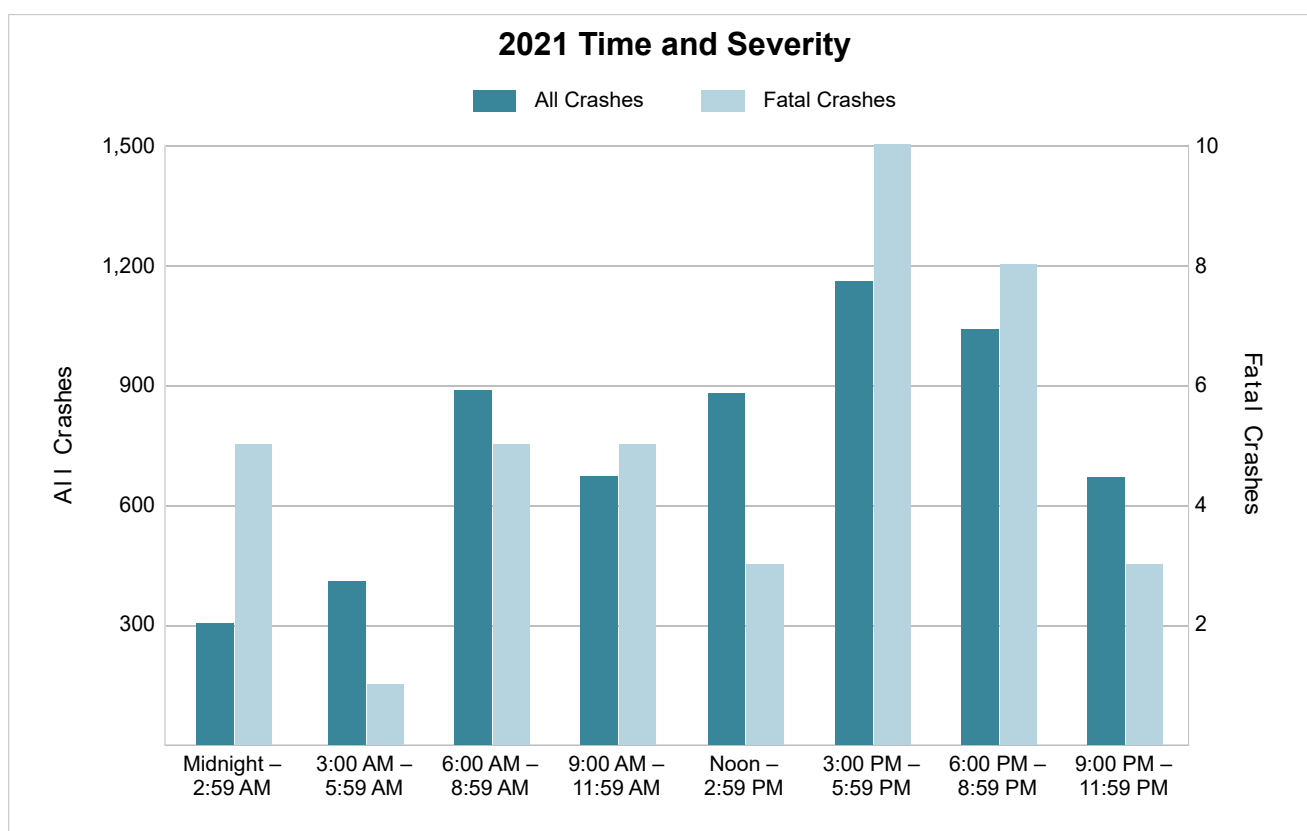


5-Year Trend Fatal Crashes by Time of Day



2021 - Time and Severity

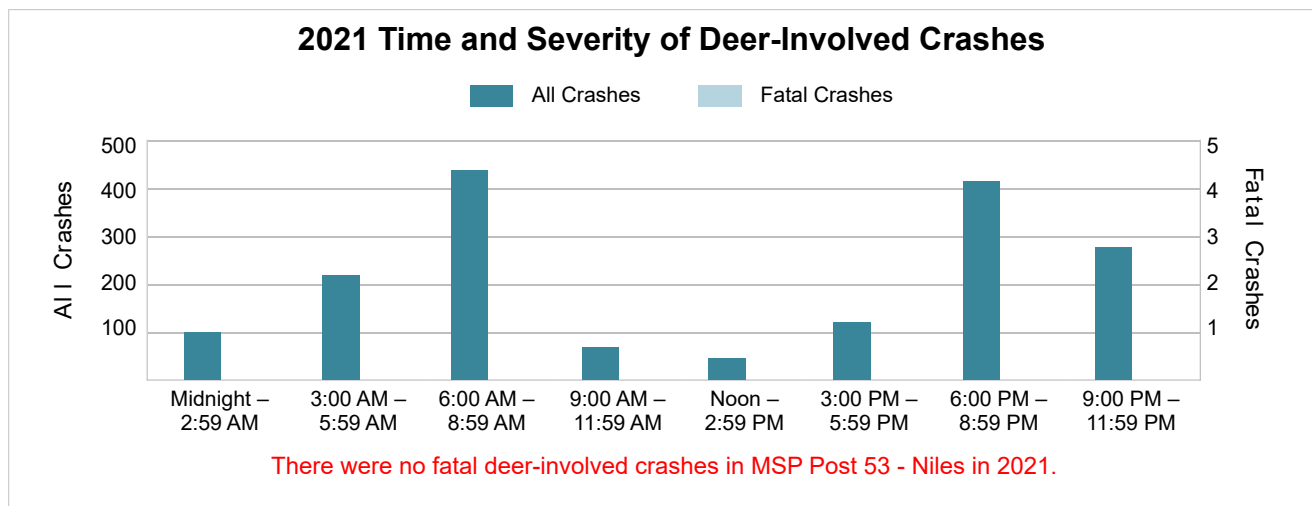
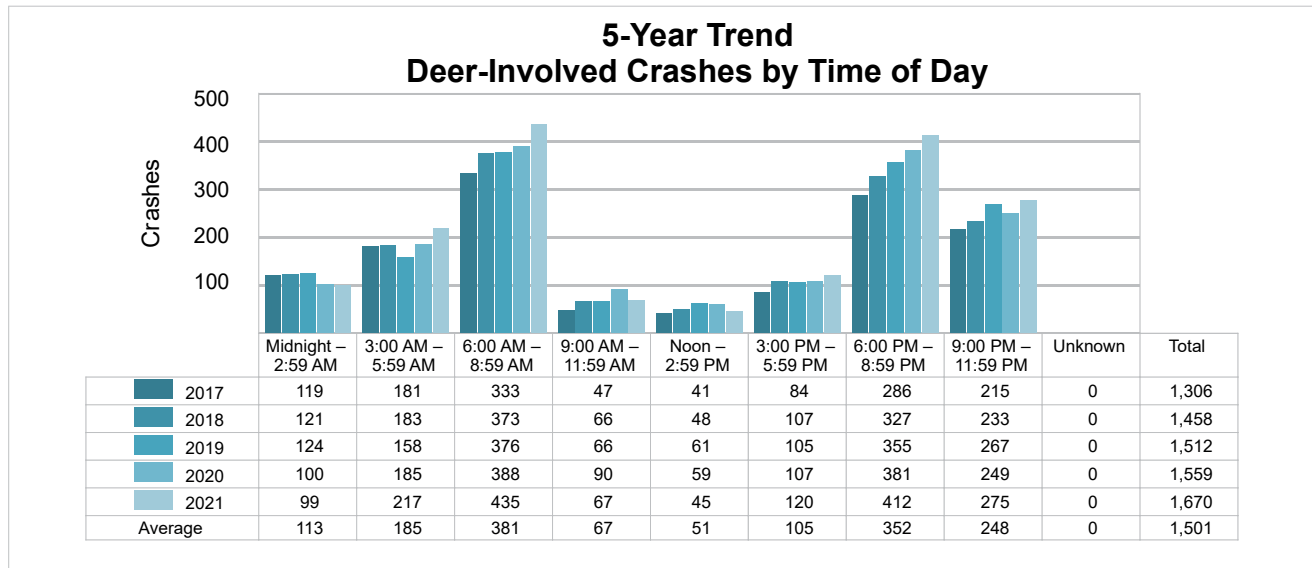
Time of Day	All Crashes		Fatal Crashes		Injury Crashes			PDO Crashes
	Number	% of Total	Number	% of Fatal	A	B	C	Number
Midnight – 2:59 AM	303	5.0	5	12.5	13	17	26	242
3:00 AM – 5:59 AM	407	6.8	1	2.5	10	9	32	355
6:00 AM – 8:59 AM	886	14.7	5	12.5	7	28	56	790
9:00 AM – 11:59 AM	670	11.1	5	12.5	12	32	75	546
Noon – 2:59 PM	878	14.6	3	7.5	19	66	122	668
3:00 PM – 5:59 PM	1,157	19.3	10	25.0	30	60	139	918
6:00 PM – 8:59 PM	1,037	17.3	8	20.0	18	50	86	875
9:00 PM – 11:59 PM	667	11.1	3	7.5	16	32	53	563
Unknown	5	0.1	0	0.0	0	0	0	5
Total	6,010	100.0	40	100.0	125	294	589	4,962



5-Year Trend - Deer-Involved Crashes by Time of Day

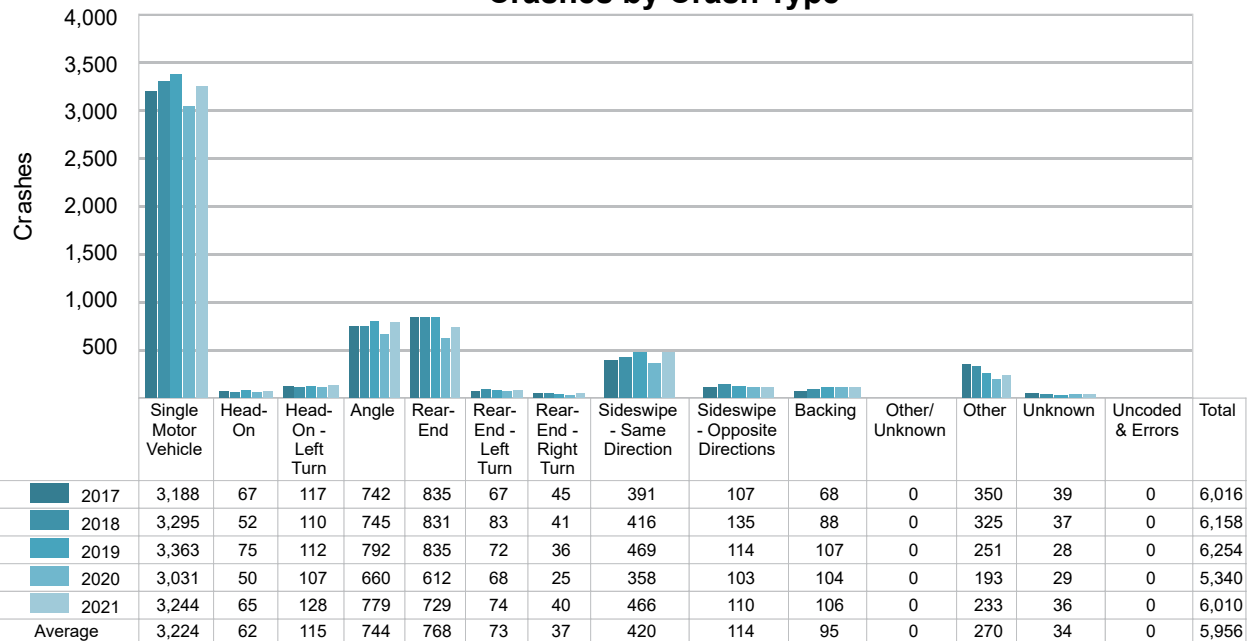
Time of Day	2017		2018		2019		2020		2021	
	Total Crashes	Fatal Crashes	Total Crashes	Fatal Crashes	Total Crashes	Fatal Crashes	Total Crashes	Fatal Crashes	Total Crashes	Fatal Crashes
Midnight – 2:59 AM	119	0	121	0	124	0	100	0	99	0
3:00 AM – 5:59 AM	181	0	183	0	158	0	185	0	217	0
6:00 AM – 8:59 AM	333 †	0	373 †	0	376 †	0	388 †	0	435 †	0
9:00 AM – 11:59 AM	47	0	66	0	66	0	90	0	67	0
Noon – 2:59 PM	41	0	48	0	61	0	59	0	45	0
3:00 PM – 5:59 PM	84	0	107	0	105	0	107	0	120	0
6:00 PM – 8:59 PM	286	0	327	0	355	0	381	0	412	0
9:00 PM – 11:59 PM	215	0	233	0	267	0	249	0	275	0
Unknown	0	0	0	0	0	0	0	0	0	0
Total	1,306	0	1,458	0	1,512	0	1,559	0	1,670	0

Note: † Indicates that the highest number of total crashes reported in the 5-year period occurred in the same time period.



5-Year Trend - Crashes by Crash Type

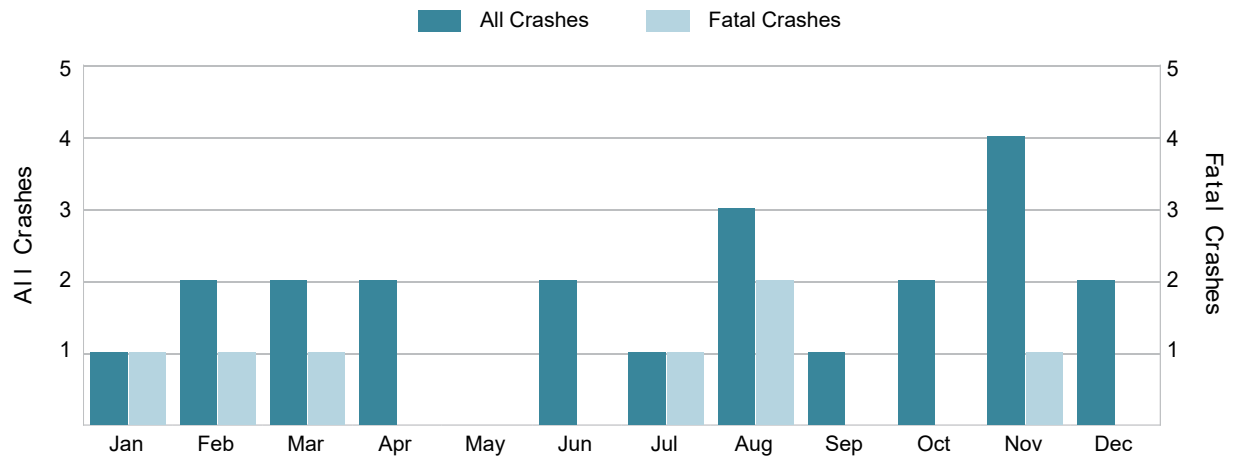
Crash Type	2017		2018		2019		2020		2021	
	Total Crashes	Fatal Crashes	Total Crashes	Fatal Crashes	Total Crashes	Fatal Crashes	Total Crashes	Fatal Crashes	Total Crashes	Fatal Crashes
Single Motor Vehicle	3,188	18	3,295	11	3,363	16	3,031	8	3,244	17
Head-On	67	2	52	3	75	1	50	3	65	12
Head-On - Left Turn	117	1	110	1	112	0	107	2	128	0
Angle	742	3	745	5	792	6	660	5	779	6
Rear-End	835	3	831	3	835	3	612	2	729	2
Rear-End - Left Turn	67	0	83	1	72	0	68	0	74	0
Rear-End - Right Turn	45	0	41	0	36	0	25	0	40	0
Sideswipe - Same Direction	391	0	416	0	469	1	358	0	466	1
Sideswipe - Opposite Directions	107	0	135	0	114	0	103	0	110	1
Backing	68	0	88	0	107	0	104	0	106	0
Other/Unknown	0	0	0	0	0	0	0	0	0	0
Other	350	4	325	2	251	5	193	1	233	1
Unknown	39	0	37	0	28	0	29	0	36	0
Uncoded & Errors	0	0	0	0	0	0	0	0	0	0
Total	6,016	31	6,158	26	6,254	32	5,340	21	6,010	40

5-Year Trend
Crashes by Crash Type

5-Year Trend - Pedestrian-Involved Crashes by Month

Month	2017		2018		2019		2020		2021	
	Total Crashes	Fatal Crashes	Total Crashes	Fatal Crashes	Total Crashes	Fatal Crashes	Total Crashes	Fatal Crashes	Total Crashes	Fatal Crashes
January	4	1	5	2	6	1	4	0	1	1
February	1	0	2	0	3	1	0	0	2	1
March	1	0	1	1	5	1	0	0	2	1
April	1	0	4	0	2	0	1	0	2	0
May	3	0	5	0	2	0	0	0	0	0
June	3	0	1	0	1	0	4	0	2	0
July	2	1	1	1	1	0	3	1	1	1
August	4	2	5	0	4	2	2	0	3	2
September	4	1	1	0	1	0	5	0	1	0
October	5	0	4	0	5	2	0	0	2	0
November	3	1	0	0	3	0	3	1	4	1
December	3	0	3	0	2	0	5	0	2	0
Total	34	6	32	4	35	7	27	2	22	7

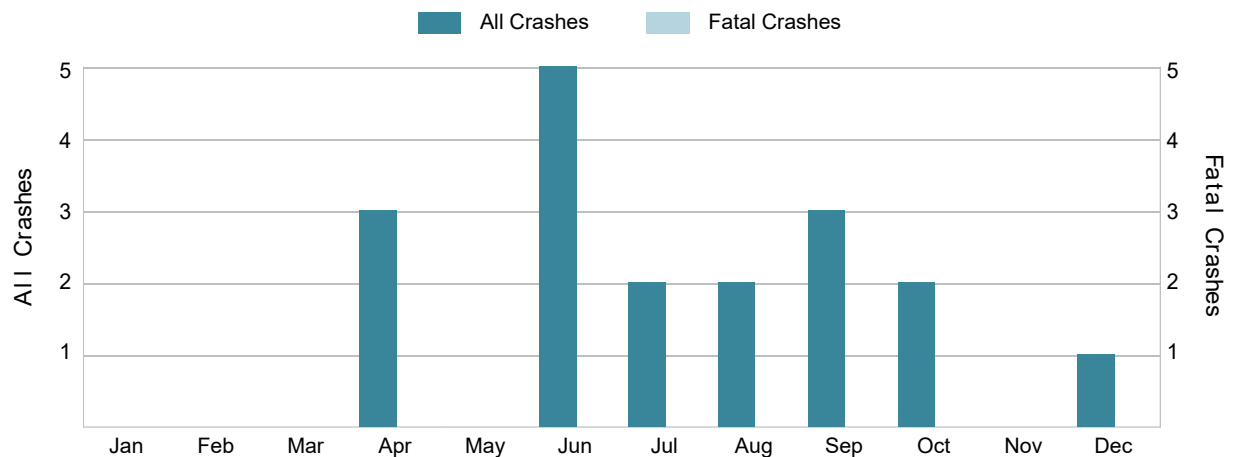
2021 Pedestrian-Involved Crashes by Month



5-Year Trend - Bicyclist-Involved Crashes by Month

Month	2017		2018		2019		2020		2021	
	Total Crashes	Fatal Crashes	Total Crashes	Fatal Crashes	Total Crashes	Fatal Crashes	Total Crashes	Fatal Crashes	Total Crashes	Fatal Crashes
January	0	0	0	0	0	0	1	0	0	0
February	1	0	0	0	0	0	0	0	0	0
March	0	0	1	0	0	0	1	0	0	0
April	3	0	1	0	1	0	0	0	3	0
May	1	0	2	0	0	0	2	0	0	0
June	0	0	3	0	4	0	7	0	5	0
July	6	0	3	0	4	0	3	0	2	0
August	5	0	1	0	3	0	2	0	2	0
September	5	0	6	2	3	0	1	0	3	0
October	2	0	1	0	1	0	2	0	2	0
November	2	0	0	0	2	0	3	0	0	0
December	1	0	0	0	0	0	0	0	1	0
Total	26	0	18	2	18	0	22	0	18	0

2021 Bicyclist-Involved Crashes by Month



There were no fatal bicyclist-involved crashes in MSP Post 53 - Niles in 2021.

2021 - Reported Motor Vehicle Crashes by County

County	Crashes												
	Total	Fatal	Injury	Property Damage	Inter-State	US Route	State Route	Local Street	Alcohol-Involved	Drug-Involved	Deer-Involved	Pedestrian-Involved	Bicyclist-Involved
Berrien	4,385	24	789	3,572	683	407	935	2,350	174	50	1,013	16	17
Cass	1,625	16	219	1,390	0	181	508	936	72	24	657	6	1
Total	6,010	40	1,008	4,962	683	588	1,443	3,286	246	74	1,670	22	18

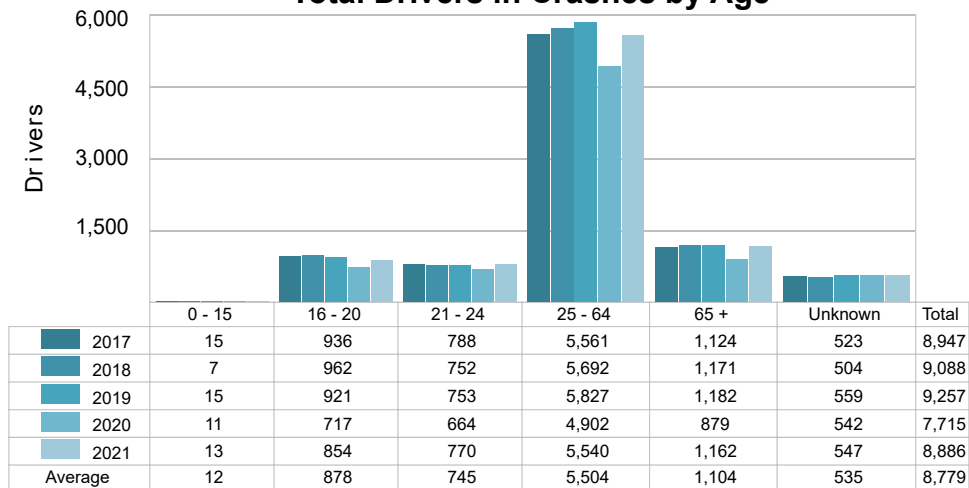
2021 - People in Reported Motor Vehicle Crashes by County

County	People					
	Fatalities	Suspected Serious Injuries	Suspected Minor Injuries	Possible Injuries	No Injuries	Uncoded & Errors
Berrien	25	195	508	1,123	6,570	509
Cass	17	89	150	252	2,251	85
Total	42	284	658	1,375	8,821	594

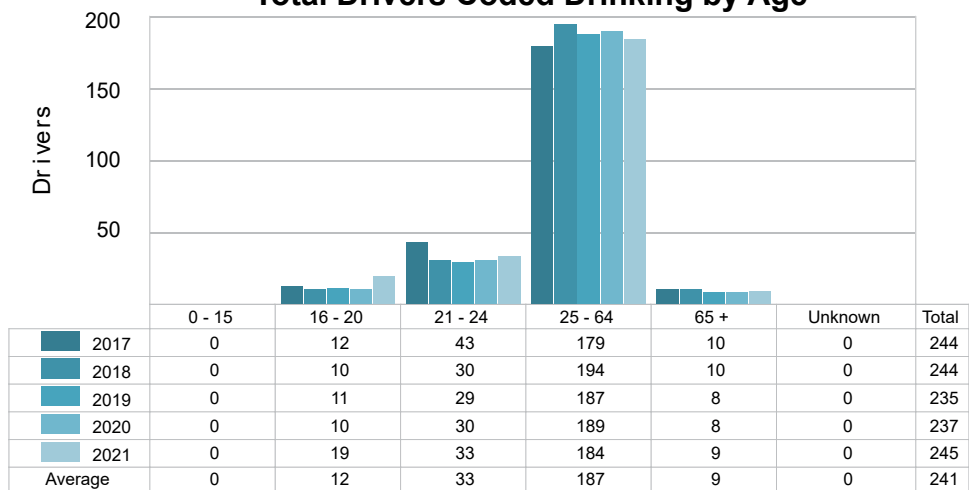
5-Year Trend - Drivers in Crashes Coded Drinking by Driver Age

Driver Age	2017		2018		2019		2020		2021	
	Total Drivers in Crashes	Total Drivers Coded Drinking	Total Drivers in Crashes	Total Drivers Coded Drinking	Total Drivers in Crashes	Total Drivers Coded Drinking	Total Drivers in Crashes	Total Drivers Coded Drinking	Total Drivers in Crashes	Total Drivers Coded Drinking
0 - 15	15	0	7	0	15	0	11	0	13	0
16 - 20	936	12	962	10	921	11	717	10	854	19
21 - 24	788	43	752	30	753	29	664	30	770	33
25 - 64	5,561	179	5,692	194	5,827	187	4,902	189	5,540	184
65 +	1,124	10	1,171	10	1,182	8	879	8	1,162	9
Unknown	523	0	504	0	559	0	542	0	547	0
Total	8,947	244	9,088	244	9,257	235	7,715	237	8,886	245

5-Year Trend Total Drivers in Crashes by Age



5-Year Trend Total Drivers Coded Drinking by Age



2021 - Bodily Alcohol Concentration (BAC) Results Among All Vehicle Drivers in Alcohol-Involved Crashes by Age

Age Group	Drivers				BAC Result Range for Drivers Coded Drinking				
	Total Drivers in Alcohol-Involved Crashes	Total Drivers Tested in all Crashes	Total Drivers Coded Drinking, Tested	Total Drivers Coded Drinking	BAC = 0.00	BAC 0.01 g/dL to 0.07 g/dL	BAC 0.08 g/dL to 0.16 g/dL	BAC 0.17 g/dL and Above	BAC Not Reported
0 - 15	0	0	0	0	0	0	0	0	0
16 - 20	24	21	17	19	0	3	6	5	5
21 - 24	39	38	27	33	0	2	7	14	10
25 - 64	242	225	155	184	0	13	39	85	47
65 +	16	13	7	9	0	2	1	4	2
Unknown	20	1	0	0	0	0	0	0	0
Total	341	298	206	245	0	20	53	108	64

Notes: BAC measured in grams (g) per deciliter (dL).

BAC may not be reported if drivers are not tested or if the results are not available immediately (as in the case of a blood test).

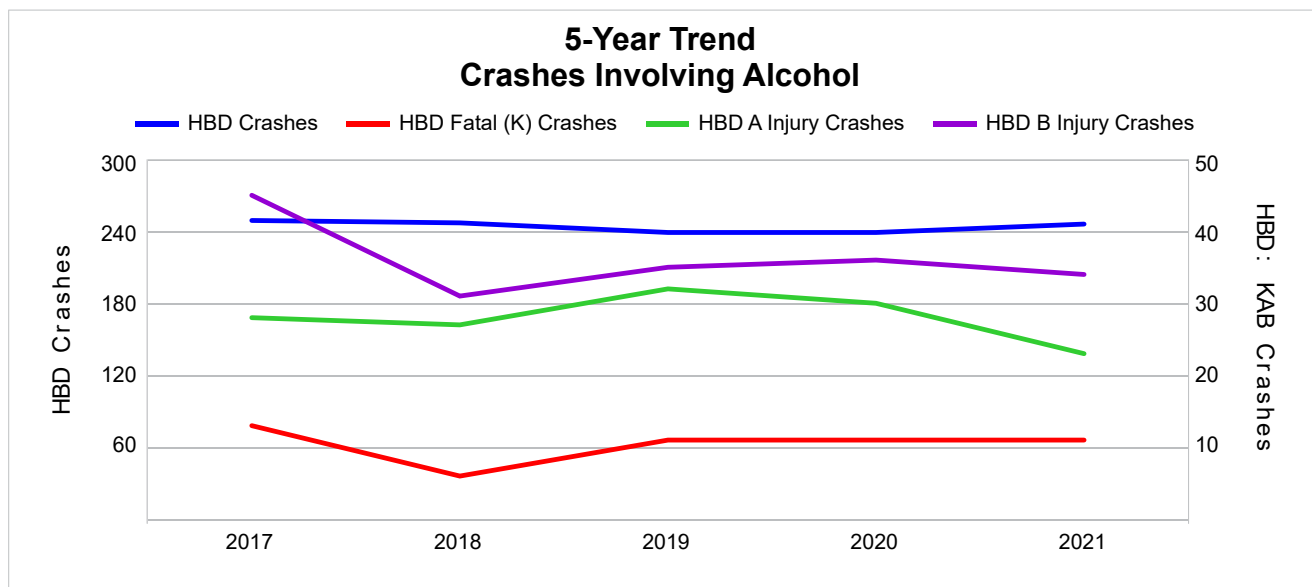
A driver may be coded by the officer as drinking even though no test is administered.

5-Year Trend - Crashes Involving Alcohol

Year	All Crashes	HBD Crashes	% HBD	Fatal Crashes	HBD Fatal Crashes	% HBD	A Injury Crashes	HBD A Injury Crashes	% HBD	B Injury Crashes	HBD B Injury Crashes	% HBD
2017	6,016	249	4.1	31	13	41.9	156	28	17.9	308	45	14.6
2018	6,158	247	4.0	26	6	23.1	134	27	20.1	268	31	11.6
2019	6,254	239	3.8	32	11	34.4	131	32	24.4	302	35	11.6
2020	5,340	239	4.5	21	11	52.4	133	30	22.6	268	36	13.4
2021	6,010	246	4.1	40 **	11	27.5	125 *	23 *	18.4	294	34	11.6 *

Note: * Indicates that the most recent year is the lowest number or percentage reported in the 5-year period in that column.

** Indicates that the most recent year is the highest number or percentage reported in the 5-year period in that column.



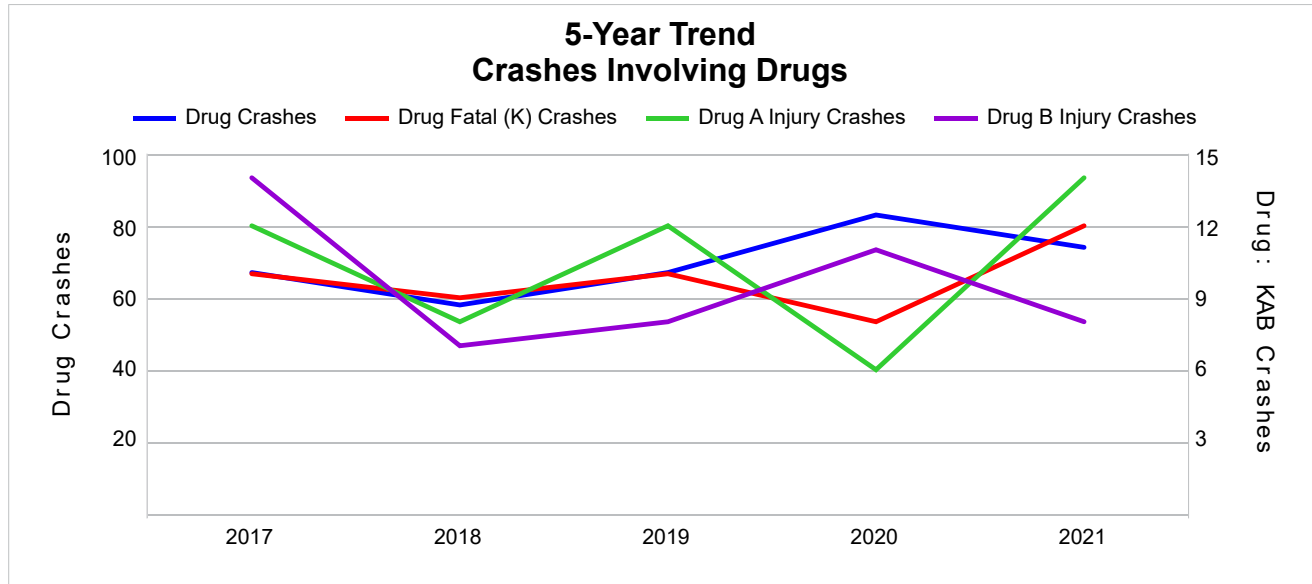
Note: Had-Been-Drinking (HBD)

5-Year Trend - Crashes Involving Drugs

Year	All Crashes	Drug Crashes	% Drug	Fatal Crashes	Drug Fatal Crashes	% Drug	A Injury Crashes	Drug A Injury Crashes	% Drug	B Injury Crashes	Drug B Injury Crashes	% Drug
2017	6,016	67	1.1	31	10	32.3	156	12	7.7	308	14	4.5
2018	6,158	58	0.9	26	9	34.6	134	8	6.0	268	7	2.6
2019	6,254	67	1.1	32	10	31.3	131	12	9.2	302	8	2.6
2020	5,340	83	1.6	21	8	38.1	133	6	4.5	268	11	4.1
2021	6,010	74	1.2	40 **	12 **	30.0 *	125 *	14 **	11.2 **	294	8	2.7

Note: * Indicates that the most recent year is the lowest number or percentage reported in the 5-year period in that column.

** Indicates that the most recent year is the highest number or percentage reported in the 5-year period in that column.

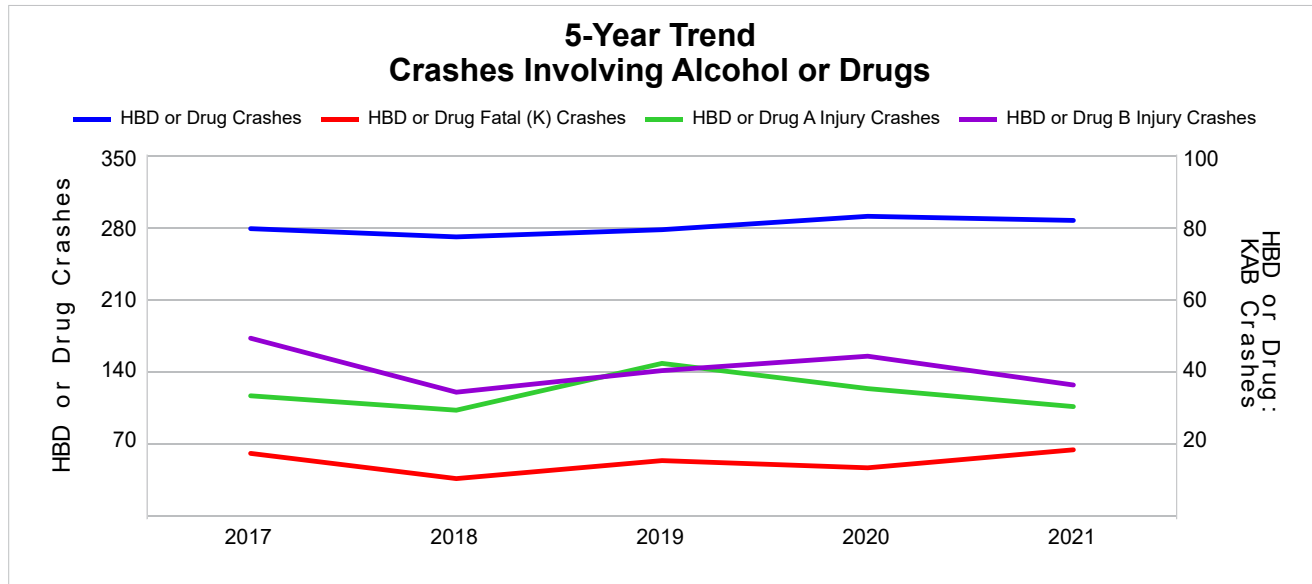


5-Year Trend - Crashes Involving Alcohol or Drugs

Year	All Crashes	HBD or Drug Crashes	% HBD or Drug	Fatal Crashes	HBD or Drug Fatal Crashes	% HBD or Drug	A Injury Crashes	HBD or Drug A Injury Crashes	% HBD or Drug	B Injury Crashes	HBD or Drug B Injury Crashes	% HBD or Drug
2017	6,016	278	4.6	31	17	54.8	156	33	21.2	308	49	15.9
2018	6,158	270	4.4	26	10	38.5	134	29	21.6	268	34	12.7
2019	6,254	277	4.4	32	15	46.9	131	42	32.1	302	40	13.2
2020	5,340	290	5.4	21	13	61.9	133	35	26.3	268	44	16.4
2021	6,010	286	4.8	40 **	18 **	45.0	125 *	30	24.0	294	36	12.2 *

Note: * Indicates that the most recent year is the lowest number or percentage reported in the 5-year period in that column.

** Indicates that the most recent year is the highest number or percentage reported in the 5-year period in that column.



Note: Had-Been-Drinking (HBD)

2021 - Restraints Worn Among Vehicle Drivers and Injured Passengers by Vehicle Type

Vehicle Type	Total Occupants			Fatalities			A - Suspected Serious			B - Suspected Minor			C - Possible Injury			No Injury		
	Total	Used Restraint	%	Total	Used Restraint	%	Total	Used Restraint	%	Total	Used Restraint	%	Total	Used Restraint	%	Total	Used Restraint	%
Passenger Car, SUV, Van	7,321	6,305	86.1	27	16	59.3	108	69	63.9	291	243	83.5	732	644	88.0	5,854	5,333	91.1
Motor Home	23	22	95.7	0	0	0.0	0	0	0.0	0	0	0.0	1	1	100.0	21	21	100.0
Pickup Truck	1,115	978	87.7	3	1	33.3	29	18	62.1	31	30	96.8	78	70	89.7	913	859	94.1
Small Truck Under 10,000 lbs. GVWR	44	39	88.6	0	0	0.0	0	0	0.0	0	0	0.0	4	3	75.0	40	36	90.0
Motorcycle	68	33	48.5	3	1	33.3	17	5	29.4	30	16	53.3	9	8	88.9	9	3	33.3
Moped/Goped	9	2	22.2	0	0	0.0	1	0	0.0	4	0	0.0	3	1	33.3	1	1	100.0
Go-Cart/Golf Cart	0	0	0.0	0	0	0.0	0	0	0.0	0	0	0.0	0	0	0.0	0	0	0.0
Snowmobile	0	0	0.0	0	0	0.0	0	0	0.0	0	0	0.0	0	0	0.0	0	0	0.0
Off-Road Vehicle (ORV)/All-Terrain Vehicle (ATV)	7	0	0.0	1	0	0.0	3	0	0.0	0	0	0.0	1	0	0.0	1	0	0.0
Other (non-registered farm equipment, construction equipment, snow plows, etc.)	34	12	35.3	0	0	0.0	1	0	0.0	2	0	0.0	3	2	66.7	24	10	41.7
Truck/Bus (over 10,000 lbs. GVWR/8+ occupants/hazmat placard)	391	344	88.0	1	1	100.0	4	4	100.0	10	10	100.0	18	13	72.2	348	316	90.8
Uncoded & Errors	206	0	0.0	0	0	0.0	0	0	0.0	0	0	0.0	0	0	0.0	0	0	0.0
Total	9,218	7,735	83.9	35	19	54.3	163	96	58.9	368	299	81.3	849	742	87.4	7,211	6,579	91.2

Note: Restraint Use includes shoulder belt only used, lap belt only used, both lap and shoulder belts used, child restraint used, restraint failure, and helmet worn.

2021 - Restraints Worn Among Vehicle Drivers and Injured Passengers by Age

Age Group	Total Occupants			Fatalities			A - Suspected Serious			B - Suspected Minor			C - Possible Injury			No Injury		
	Total	Used Restraint	%	Total	Used Restraint	%	Total	Used Restraint	%	Total	Used Restraint	%	Total	Used Restraint	%	Total	Used Restraint	%
0 - 15	83	73	88.0	2	2	100.0	9	6	66.7	17	14	82.4	45	42	93.3	10	9	90.0
16 - 20	908	799	88.0	3	3	100.0	21	9	42.9	43	34	79.1	103	87	84.5	735	666	90.6
21 - 24	806	708	87.8	6	2	33.3	10	6	60.0	40	32	80.0	85	69	81.2	661	599	90.6
25 - 64	5,677	5,061	89.1	19	10	52.6	102	61	59.8	213	170	79.8	495	436	88.1	4,812	4,384	91.1
65 +	1,197	1,094	91.4	5	2	40.0	21	14	66.7	55	49	89.1	121	108	89.3	989	921	93.1
Unknown	547	0	0.0	0	0	0.0	0	0	0.0	0	0	0.0	0	0	0.0	4	0	0.0
Total	9,218	7,735	83.9	35	19	54.3	163	96	58.9	368	299	81.3	849	742	87.4	7,211	6,579	91.2

Note: Restraint Use includes shoulder belt only used, lap belt only used, both lap and shoulder belts used, child restraint used, restraint failure, and helmet worn.

5-Year Trend - Restraint Use Among Drivers

Restraint Use	2017			2018			2019			2020			2021		
	Drivers	Fatal Drivers	Injured Drivers	Drivers	Fatal Drivers	Injured Drivers	Drivers	Fatal Drivers	Injured Drivers	Drivers	Fatal Drivers	Injured Drivers	Drivers	Fatal Drivers	Injured Drivers
No Belts Available	18	0	3	18	0	6	21	0	3	23	0	3	20	1	3
Shoulder Belt Only Used	65	1	13	73	0	7	59	0	5	72	0	11	59	0	7
Lap Belt Only Used	18	0	0	16	0	2	25	0	4	13	0	1	20	0	4
Both Lap & Shoulder Belt Used	7,692	9	901	7,783	6	862	7,896	7	872	6,427	4	792	7,364	13	845
No Belts Used	79	6	33	72	5	34	64	7	26	66	3	28	70	7	38
Child Restraint Used - Forward Facing	0	0	0	0	0	0	0	0	0	0	0	0	0	0	0
Child Restraint Not Used, Unavailable or Improper Use	0	0	0	0	0	0	0	0	0	0	0	0	0	0	0
Child Restraint Used - Rear Facing	0	0	0	0	0	0	0	0	0	0	0	0	0	0	0
Child Restraint Used - Booster Seat	0	0	0	0	0	0	0	0	0	0	0	0	0	0	0
Restraint Failure	8	0	1	0	0	0	2	1	0	2	0	0	2	0	1
Restraint Use Unknown	963	3	78	1,038	3	62	1,107	3	87	1,028	4	57	1,273	2	97
Helmet Worn	51	1	37	42	3	29	40	2	30	39	2	28	32	1	27
Helmet Not Worn	42	1	30	36	0	28	38	1	28	40	3	31	36	2	29
Helmet Use Unknown	7	0	5	5	0	3	4	0	2	4	0	1	7	1	5
Uncoded & Errors	4	0	0	5	0	0	1	0	0	1	0	0	3	0	0
Total	8,947	21	1,101	9,088	17	1,033	9,257	21	1,057	7,715	16	952	8,886	27	1,056

5-Year Trend - Restraint Use Among Drivers Coded Drinking

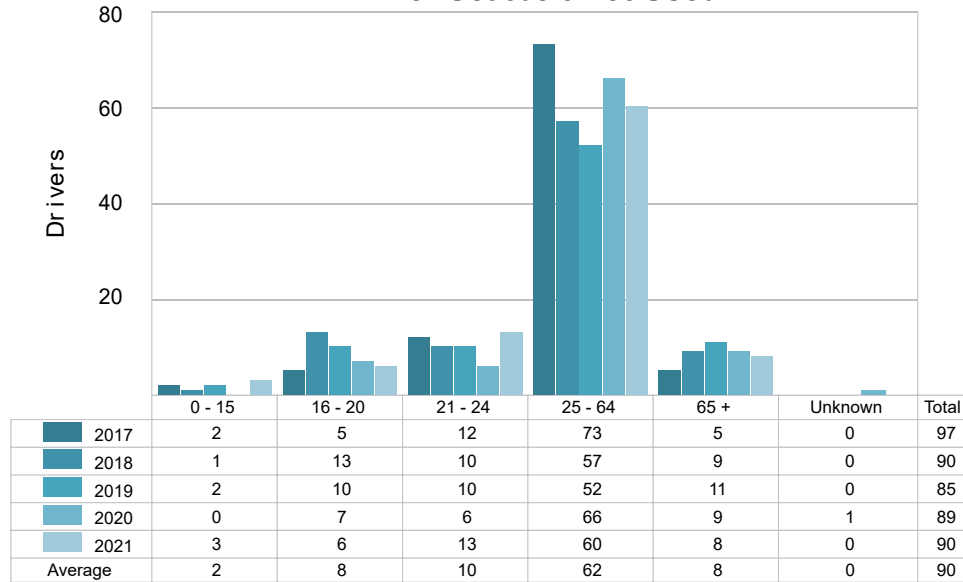
Restraint Use	2017			2018			2019			2020			2021		
	Drivers	Fatal Drivers	Injured Drivers	Drivers	Fatal Drivers	Injured Drivers	Drivers	Fatal Drivers	Injured Drivers	Drivers	Fatal Drivers	Injured Drivers	Drivers	Fatal Drivers	Injured Drivers
No Belts Available	0	0	0	1	0	1	1	0	0	1	0	1	0	0	0
Shoulder Belt Only Used	3	1	2	1	0	1	0	0	0	2	0	1	3	0	0
Lap Belt Only Used	0	0	0	0	0	0	0	0	0	1	0	1	0	0	0
Both Lap & Shoulder Belt Used	171	3	64	177	1	51	164	1	53	161	0	67	173	4	51
No Belts Used	20	4	11	10	1	6	16	4	9	13	1	8	20	5	10
Child Restraint Used - Forward Facing	0	0	0	0	0	0	0	0	0	0	0	0	0	0	0
Child Restraint Not Used, Unavailable or Improper Use	0	0	0	0	0	0	0	0	0	0	0	0	0	0	0
Child Restraint Used - Rear Facing	0	0	0	0	0	0	0	0	0	0	0	0	0	0	0
Child Restraint Used - Booster Seat	0	0	0	0	0	0	0	0	0	0	0	0	0	0	0
Restraint Failure	0	0	0	0	0	0	0	0	0	0	0	0	0	0	0
Restraint Use Unknown	40	0	20	48	1	19	44	1	14	53	2	15	47	1	18
Helmet Worn	3	1	2	1	0	1	2	0	2	3	0	3	2	0	2
Helmet Not Worn	6	1	4	6	0	6	7	0	7	3	0	2	0	0	0
Helmet Use Unknown	1	0	1	0	0	0	1	0	1	0	0	0	0	0	0
Uncoded & Errors	0	0	0	0	0	0	0	0	0	0	0	0	0	0	0
Total	244	10	104	244	3	85	235	6	86	237	3	98	245	10	81

5-Year Trend - Seatbelt Not Used Among Drivers by Age

Age Group	2017			2018			2019			2020			2021		
	Drivers	Fatal Drivers	Injured Drivers	Drivers	Fatal Drivers	Injured Drivers	Drivers	Fatal Drivers	Injured Drivers	Drivers	Fatal Drivers	Injured Drivers	Drivers	Fatal Drivers	Injured Drivers
0 - 15	2	0	1	1	0	1	2	0	1	0	0	0	3	0	2
16 - 20	5	0	1	13	1	6	10	0	4	7	0	1	6	0	5
21 - 24	12	2	5	10	0	5	10	1	4	6	0	3	13	2	5
25 - 64	73	4	26	57	3	23	52	5	19	66	2	23	60	5	24
65 +	5	0	3	9	1	5	11	1	1	9	1	3	8	1	5
Unknown	0	0	0	0	0	0	0	0	0	1	0	1	0	0	0
Total	97	6	36	90	5	40	85	7	29	89	3	31	90	8	41

Note: Seatbelt Not Used includes no belts available or no belts used.

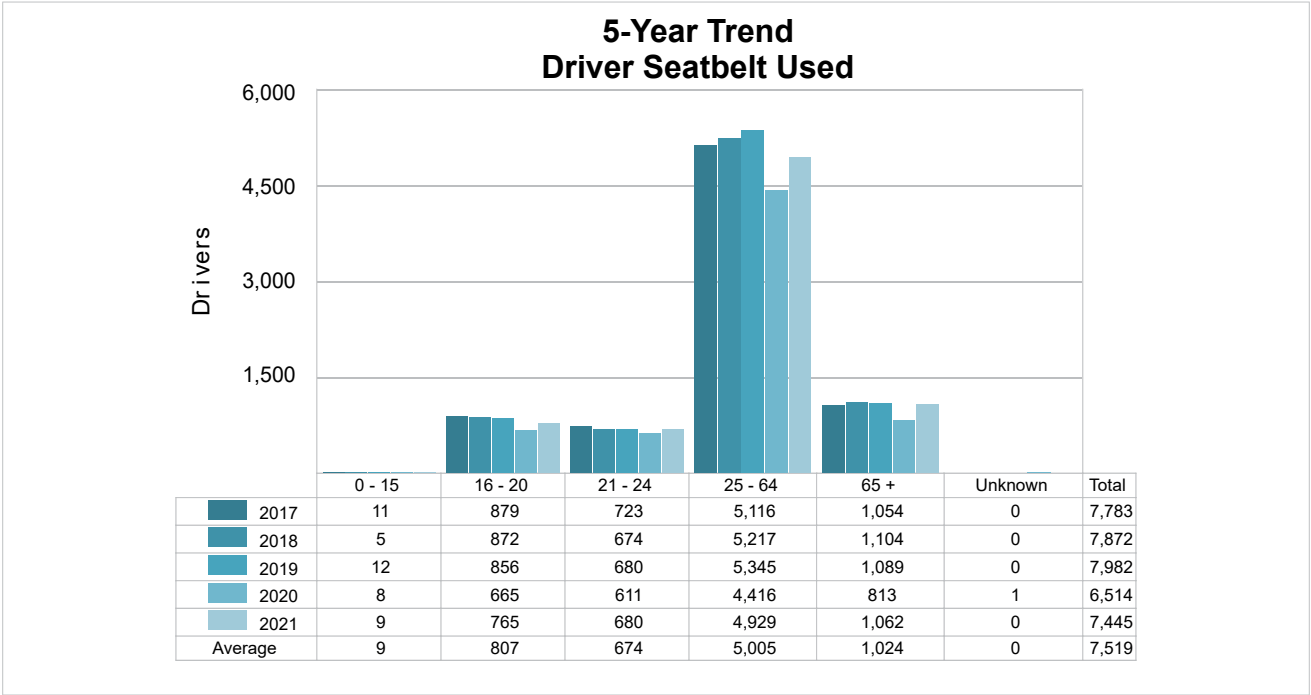
5-Year Trend Driver Seatbelt Not Used



5-Year Trend - Seatbelt Used Among Drivers by Age

Age Group	2017			2018			2019			2020			2021		
	Drivers	Fatal Drivers	Injured Drivers	Drivers	Fatal Drivers	Injured Drivers	Drivers	Fatal Drivers	Injured Drivers	Drivers	Fatal Drivers	Injured Drivers	Drivers	Fatal Drivers	Injured Drivers
0 - 15	11	0	3	5	0	0	12	0	3	8	0	2	9	0	0
16 - 20	879	0	108	872	0	105	856	0	93	665	0	91	765	3	97
21 - 24	723	1	101	674	1	80	680	2	90	611	0	72	680	2	80
25 - 64	5,116	8	577	5,217	4	554	5,345	4	559	4,416	2	519	4,929	7	539
65 +	1,054	1	126	1,104	1	132	1,089	2	136	813	2	119	1,062	1	141
Unknown	0	0	0	0	0	0	0	0	0	1	0	1	0	0	0
Total	7,783	10	915	7,872	6	871	7,982	8	881	6,514	4	804	7,445	13	857

Note: Seatbelt Used includes shoulder belt only used, lap belt only used, both lap and shoulder belts used, and restraint failure.



5-Year Trend - Drivers in Crashes by Hazardous Action

Hazardous Action	2017		2018		2019		2020		2021	
	Total Drivers in Crashes	Drivers in Fatal Crashes	Total Drivers in Crashes	Drivers in Fatal Crashes	Total Drivers in Crashes	Drivers in Fatal Crashes	Total Drivers in Crashes	Drivers in Fatal Crashes	Total Drivers in Crashes	Drivers in Fatal Crashes
None	4,602	15	4,765	19	4,859	27	4,171	12	4,859	23
Speed Too Fast	993	6	966	4	1,039	5	688	2	669	10
Speed Too Slow	12	1	11	0	12	1	5	0	4	0
Failed to Yield	871	3	835	4	836	5	684	4	876	6
Disregard Traffic Control	114	1	137	1	115	1	135	0	155	1
Drove Wrong Way	4	0	3	0	5	0	7	1	4	0
Drove Left of Center	54	2	65	2	80	2	52	0	45	1
Improper Passing	36	0	50	0	58	0	54	0	68	0
Improper Lane Use	90	0	92	0	116	0	93	0	117	0
Improper Turn	66	0	71	0	67	0	75	1	88	0
Improper/No Signal	7	0	11	0	10	0	8	0	11	0
Improper Backing	125	1	108	0	114	0	96	0	95	0
Unable to Stop in Assured Clear Distance	798	0	795	3	813	1	621	1	694	1
Other	334	4	351	0	335	2	274	2	355	4
Unknown	461	4	445	6	468	10	438	7	483	14
Reckless Driving	72	2	63	2	59	0	67	2	72	3
Careless/Negligent Driving	307	4	318	3	270	3	246	4	289	2
Uncoded & Errors	1	0	2	0	1	0	1	0	2	0
Total	8,947	43	9,088	44	9,257	57	7,715	36	8,886	65

Office of Highway Safety Planning

Physical Address:
7150 Harris Drive
Dimondale, Michigan 48821

Mailing Address:
P.O. Box 30634
Lansing, Michigan 48909

Find us on the web:
MichiganTrafficCrashFacts.org
mtcf-info@umich.edu

