



2021

**MTCF**  
Michigan Traffic  
Crash Facts

# Michigan Traffic Crash Facts

## Reporting Criteria

Please pay particular attention to the wording when interpreting the three levels of data gathered for this report.

### Crash

The Crash Level analyzes data related to crash events and returns one result per crash.

Examples: Time, weather, and location.

### Units

The Units Level analyzes the experience of the units in the crash and returns one result per vehicle, driver, pedestrian, bicyclist, or train.

Examples: Vehicle type, driver condition, and unit events.

### People

The People Level analyzes the experience of the people involved in the crash and returns one result per occupant/person/party.

Examples: Age, injury severity, and seat belt or helmet use.

### **KABCO Injury Indicator:**

K = Killed

A = Suspected Serious Injury

B = Suspected Minor Injury

C = Possible Injury

O = No Injury

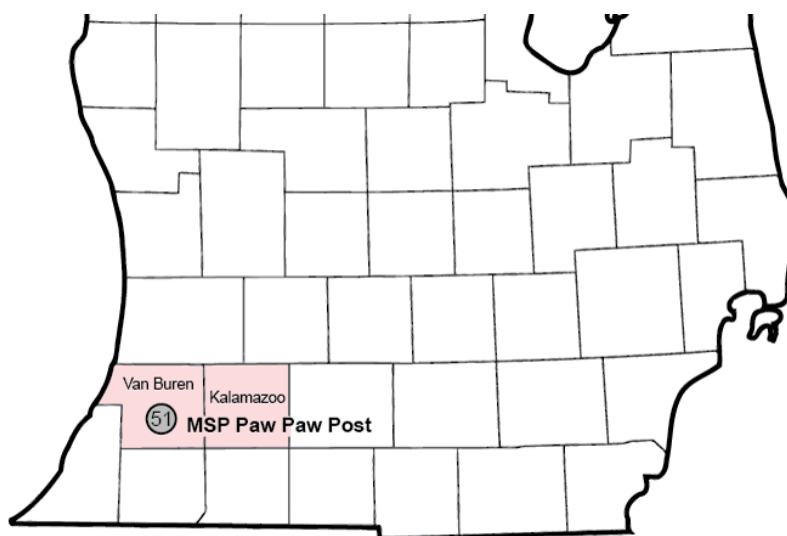
Property Damage Only (PDO)



## Michigan State Police (MSP) Post 51 - Paw Paw

### 2021 Traffic Crash Data & 2017-2021 5-Year Trends

MSP Post 51 - Paw Paw is comprised of Kalamazoo and Van Buren counties. Trend tables for this report are based on those counties.



### Sources:

The crashes in this report occurred on public roadways in Michigan and resulted in injuries, fatalities, or property damage (with \$1,000 as a reporting threshold). The information was gathered from Michigan Traffic Crash Report Forms (UD-10) submitted by local police departments, sheriff's offices, and the Michigan State Police. Other related information was obtained from the departments of Transportation, State, and Community Health.

## MSP Post 51 - Paw Paw

- There were 10,455 crashes in Post 51 during 2021. [Page 1]
- A total of 56 fatalities resulted from 54 fatal crashes in 2021 in Post 51. [Page 1]
- There were 2,539 injuries and 1,861 injury crashes. [Page 1]
- There were 8,540 property damage only crashes (no fatalities or injuries). [Page 1]
- November had the highest number of crashes (1,130). [Pages 1-2]
- May and August had the highest number of fatal crashes (8) while May had the highest number of fatalities (9). [Pages 1-2]
- October had the highest number of injury crashes (200) while August had the highest number of injuries (264). [Page 1]
- November had the highest number of property damage only crashes (990). [Page 1]
- Of all vehicles involved in fatal crashes, 10 (11.5%) were motorcycles. [Page 1]
- Friday was the day of the week with the highest number of crashes (1,785) and Saturday had the highest number of fatal crashes (11). [Pages 2-3]
- The 3:00 PM – 5:59 PM time period had the highest number of crashes (2,321). This holds true for every year between 2017 and 2021. The 6:00 PM – 8:59 PM time period had the highest number of fatal crashes (13). [Pages 5-6]
- During the period from 2017 to 2021, the highest number of deer crashes occurred in 2021 (1,990). The 6:00 AM – 8:59 AM time period had the highest number of deer-involved crashes. There was one fatal crash involving deer in 2021. [Page 7]
- Kalamazoo County (78.8%) had the highest number of crashes in Post 51 in 2021, followed by Van Buren County (21.2%). [Page 11]
- Kalamazoo County (69.6%) had the highest number of fatalities in Post 51 in 2021, followed by Van Buren County (30.4%). [Page 11]
- The highest number of drivers in crashes (19,006) occurred during 2019 and the highest number of drivers coded drinking in crashes (418) occurred during 2017 within the five year period between 2017 and 2021. [Page 12]
- A total of 372 crashes involved alcohol in 2021. [Page 13]
- Alcohol-involved fatal crashes were the highest in 2021 during the five-year period from 2017 to 2021 at 18. [Page 13]
- A total of 126 crashes, 19 fatal crashes, and 24 suspected injury crashes involved drugs in 2021. [Page 14]
- There were 14,122 drivers wearing seatbelts and 145 drivers not wearing seatbelts in crashes in 2021. Of the 145 drivers not wearing seatbelts, 10 (6.9%) were killed and 51 (35.2%) were injured. [Pages 17-19]
- The most common hazardous action coded for drivers in 2021 in all crashes was unable to stop in assured clear distance (2,074), while the most common hazardous action coded for drivers in fatal crashes was unknown (17). [Page 20]

## 2021 - Crashes and Injury by Month

Month	Crashes				People	
	Total	Fatal	Injury	Property Damage Only (PDO)	Fatalities	Injuries
January	874	4	134	736	4	184
February	902	2	130	770	2	172
March	645	5	123	517	6	159
April	690	5	138	547	5	197
May	731	8	156	567	9	215
June	870	1	181	688	1	259
July	764	7	134	623	7	195
August	830	8	194	628	8	264
September	850	4	177	669	4	240
October	1,114	2	200	912	2	261
November	1,130	5	135	990	5	188
December	1,055	3	159	893	3	205
<b>Total</b>	<b>10,455</b>	<b>54</b>	<b>1,861</b>	<b>8,540</b>	<b>56</b>	<b>2,539</b>

## 2021 - Driver Statistics

Age Group	MSP Post 51 - Paw Paw			Driver Rates	
	2019 Population*	Licensed Drivers	Drivers in Crashes	Per 10k Population	Per 10k Licensed
0 - 15	66,058	1,621	22	3.3	135.7
16 - 20	26,244	14,182	1,955	744.9	1,378.5
21 - 24	28,298	15,716	1,811	640.0	1,152.3
25 - 64	165,109	151,935	10,141	614.2	667.5
65 +	55,034	54,626	1,758	319.4	321.8
Unknown	0	0	1,640	--	--
<b>Total</b>	<b>340,743</b>	<b>238,080</b>	<b>17,327</b>	<b>508.5</b>	<b>727.8</b>

\*2021 Population of Michigan Counties (by single-year of age) not yet available from U.S. Census Bureau.

## 2021 - Vehicles in Crashes

Vehicle Type	Motor Vehicles		Fatal Crashes		Injury Crashes	PDO Crashes
	Number of Vehicles	% of Total	Number	% of Total	Number	Number
Passenger Car, SUV, Van	13,951	80.5	58	66.7	2,655	11,238
Motor Home	40	0.2	0	0.0	8	32
Pickup Truck	1,717	9.9	7	8.0	329	1,381
Small Truck Under 10,000 lbs. GVWR	69	0.4	0	0.0	16	53
Motorcycle	142	0.8	10	11.5	98	34
Moped/Goped	16	0.1	0	0.0	15	1
Go-Cart/Golf Cart	2	0.0	0	0.0	1	1
Snowmobile	0	0.0	0	0.0	0	0
Off-Road Vehicle (ORV)/All-Terrain Vehicle (ATV)	6	0.0	1	1.1	2	3
Other (non-registered farm equipment, construction equipment, snow plows, etc.)	52	0.3	1	1.1	12	39
Truck/Bus (over 10,000 lbs. GVWR/8+ occupants/hazmat placard)	625	3.6	9	10.3	121	495
Uncoded & Errors	707	4.1	1	1.1	62	644
<b>Total</b>	<b>17,327</b>	<b>100.0</b>	<b>87</b>	<b>100.0</b>	<b>3,319</b>	<b>13,921</b>

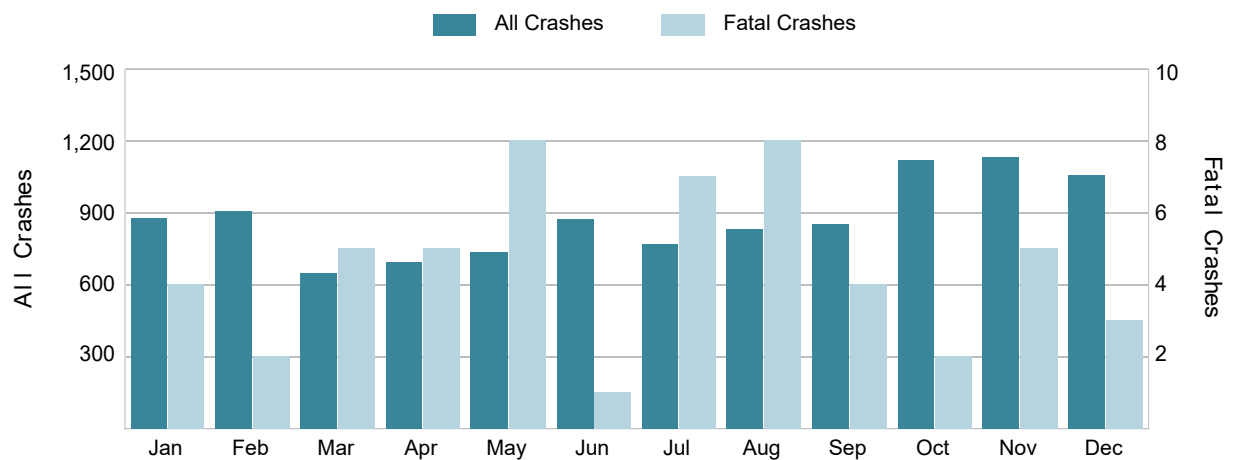
## 5-Year Trend - Crashes by Month

Month	2017		2018		2019		2020		2021	
	Total Crashes	Fatal Crashes	Total Crashes	Fatal Crashes	Total Crashes	Fatal Crashes	Total Crashes	Fatal Crashes	Total Crashes	Fatal Crashes
January	1,011	2	1,083	2	1,358	2	906	2	874	4
February	736	0	910	1	938	5	1,133	1	902	2
March	807	5	778	5	827	3	463	1	645	5
April	705	3	784	1	692	1	327	2	690	5
May	808	4	803	5	790	1	514	3	731	8
June	790	8	759	4	831	3	730	5	870	1
July	813	4	761	7	888	3	706	1	764	7
August	761	4	733	5	737	1	702	1	830	8
September	808	4	777	2	809	4	794	6	850	4
October	1,099	3	975	2	1,056	6	922	7	1,114	2
November	1,073	1	1,270	1	1,341	2	849	3	1,130	5
December	1,512	6	911	3	1,057	3	860	2	1,055	3
<b>Total</b>	<b>10,923</b>	<b>44</b>	<b>10,544</b>	<b>38</b>	<b>11,324</b>	<b>34</b>	<b>8,906</b>	<b>34</b>	<b>10,455</b>	<b>54</b>

## 5-Year Trend - Crashes by Day of Week

Day	2017		2018		2019		2020		2021	
	Total Crashes	Fatal Crashes	Total Crashes	Fatal Crashes	Total Crashes	Fatal Crashes	Total Crashes	Fatal Crashes	Total Crashes	Fatal Crashes
Monday	1,593	3	1,654	2	1,703	4	1,200	10	1,484	3
Tuesday	1,566	3	1,529	2	1,940	7	1,201	6	1,672	5
Wednesday	1,650	8	1,595	8	1,771	5	1,453	3	1,517	8
Thursday	1,720	8	1,537	3	1,605	6	1,444	4	1,533	7
Friday	1,766	12	1,881	8	1,815	4	1,491	2	1,785	10
Saturday	1,426	3	1,292	5	1,346	4	1,156	6	1,368	11
Sunday	1,202	7	1,056	10	1,144	4	961	3	1,096	10
<b>Total</b>	<b>10,923</b>	<b>44</b>	<b>10,544</b>	<b>38</b>	<b>11,324</b>	<b>34</b>	<b>8,906</b>	<b>34</b>	<b>10,455</b>	<b>54</b>

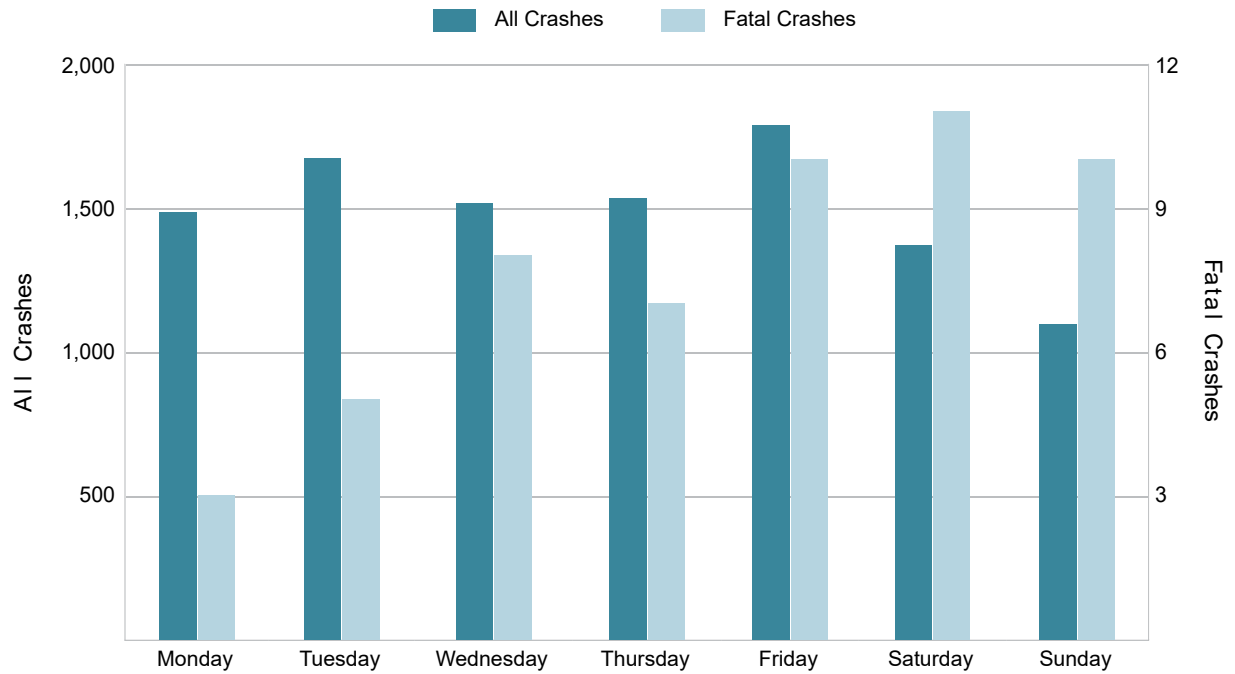
## 2021 Crashes by Month



## 2021 - Crashes by Day of Week

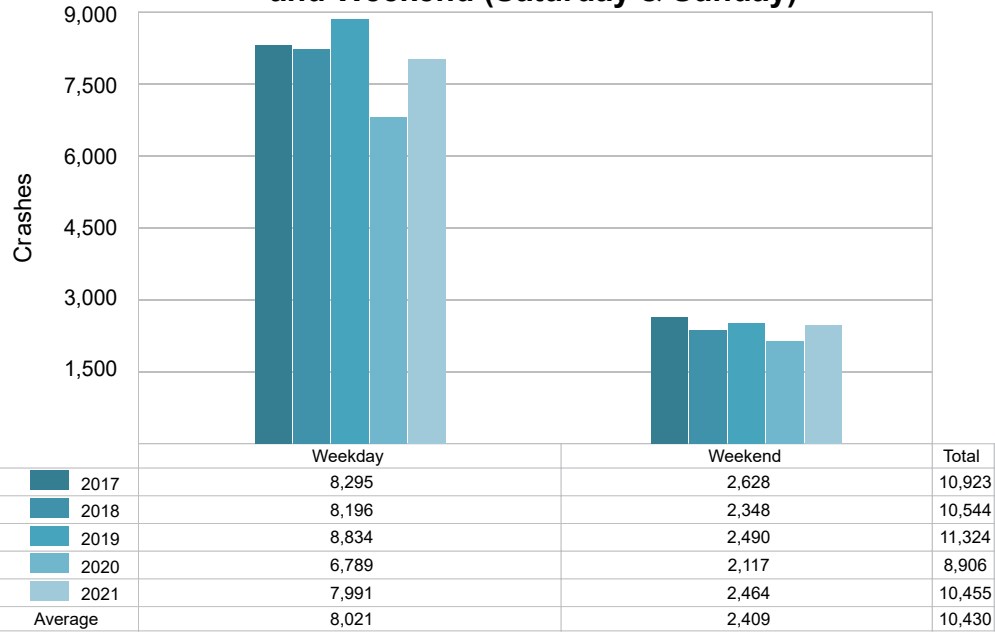
Day	All Crashes		Fatal Crashes		Injury Crashes			PDO Crashes
	Number	% of Total	Fatal	% of Fatal	A	B	C	Number
Monday	1,484	14.2	3	5.6	26	76	133	1,246
Tuesday	1,672	16.0	5	9.3	40	74	149	1,404
Wednesday	1,517	14.5	8	14.8	31	77	166	1,235
Thursday	1,533	14.7	7	13.0	30	88	164	1,244
Friday	1,785	17.1	10	18.5	26	111	188	1,450
Saturday	1,368	13.1	11	20.4	42	78	143	1,094
Sunday	1,096	10.5	10	18.5	28	80	111	867
<b>Total</b>	<b>10,455</b>	<b>100.0</b>	<b>54</b>	<b>100.0</b>	<b>223</b>	<b>584</b>	<b>1,054</b>	<b>8,540</b>

## 2021 Day of Week and Severity



## 5-Year Trend - Crashes by Weekday and Weekend

Portion of Week	2017		2018		2019		2020		2021	
	Total Crashes	Fatal Crashes	Total Crashes	Fatal Crashes	Total Crashes	Fatal Crashes	Total Crashes	Fatal Crashes	Total Crashes	Fatal Crashes
Weekday	8,295	34	8,196	23	8,834	26	6,789	25	7,991	33
Weekend	2,628	10	2,348	15	2,490	8	2,117	9	2,464	21
<b>Total</b>	<b>10,923</b>	<b>44</b>	<b>10,544</b>	<b>38</b>	<b>11,324</b>	<b>34</b>	<b>8,906</b>	<b>34</b>	<b>10,455</b>	<b>54</b>

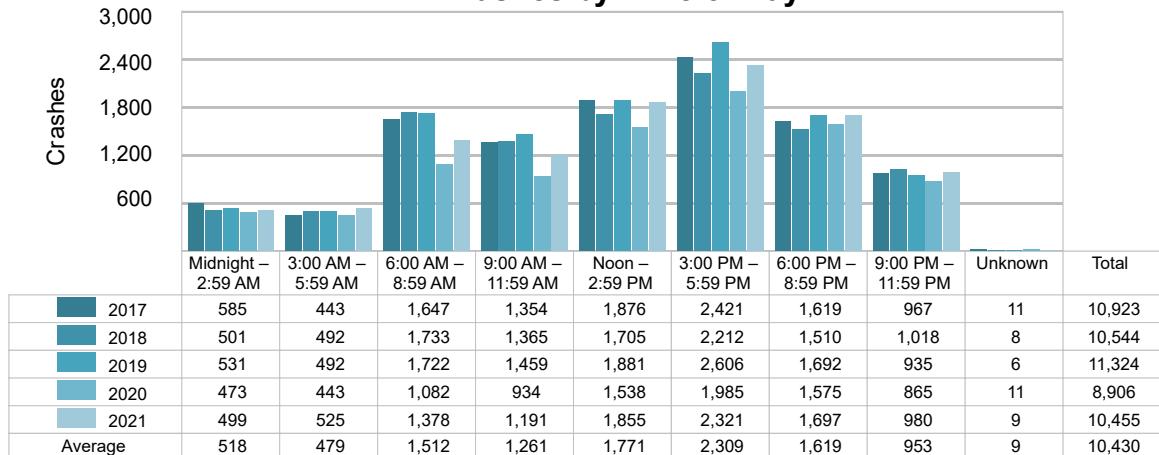
5-Year Crash Trends by Weekday (Monday - Friday)  
and Weekend (Saturday & Sunday)

## 5-Year Trend - Crashes by Time of Day

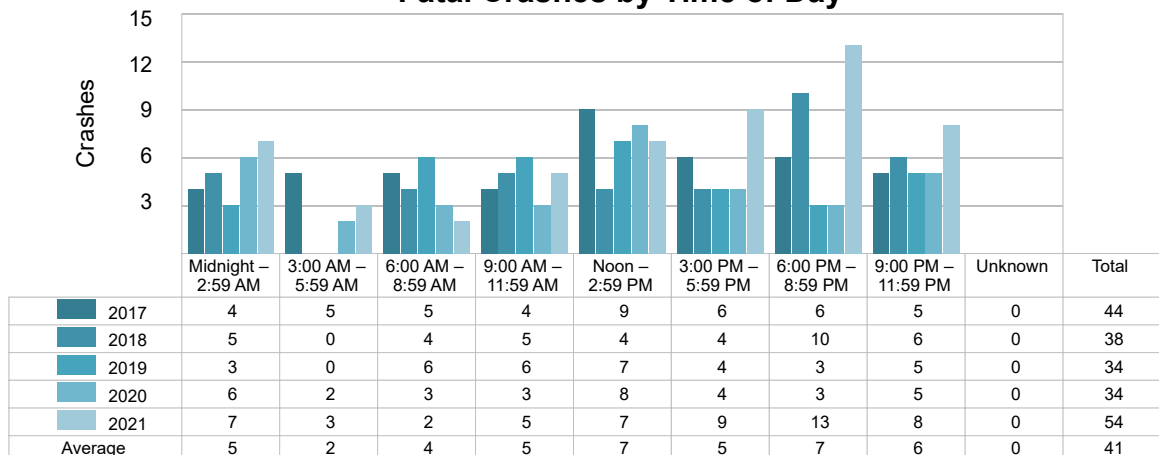
Time of Day	2017		2018		2019		2020		2021	
	Total Crashes	Fatal Crashes	Total Crashes	Fatal Crashes	Total Crashes	Fatal Crashes	Total Crashes	Fatal Crashes	Total Crashes	Fatal Crashes
Midnight – 2:59 AM	585	4	501	5	531	3	473	6	499	7
3:00 AM – 5:59 AM	443	5	492	0	492	0	443	2	525	3
6:00 AM – 8:59 AM	1,647	5	1,733	4	1,722	6	1,082	3	1,378	2
9:00 AM – 11:59 AM	1,354	4	1,365	5	1,459	6	934	3	1,191	5
Noon – 2:59 PM	1,876	9	1,705	4	1,881	7	1,538	8	1,855	7
3:00 PM – 5:59 PM	2,421 †	6	2,212 †	4	2,606 †	4	1,985 †	4	2,321 †	9
6:00 PM – 8:59 PM	1,619	6	1,510	10	1,692	3	1,575	3	1,697	13
9:00 PM – 11:59 PM	967	5	1,018	6	935	5	865	5	980	8
Unknown	11	0	8	0	6	0	11	0	9	0
<b>Total</b>	<b>10,923</b>	<b>44</b>	<b>10,544</b>	<b>38</b>	<b>11,324</b>	<b>34</b>	<b>8,906</b>	<b>34</b>	<b>10,455</b>	<b>54</b>

Note: † Indicates that the highest number of total crashes reported in the 5-year period occurred in the same time period.

## 5-Year Trend Crashes by Time of Day

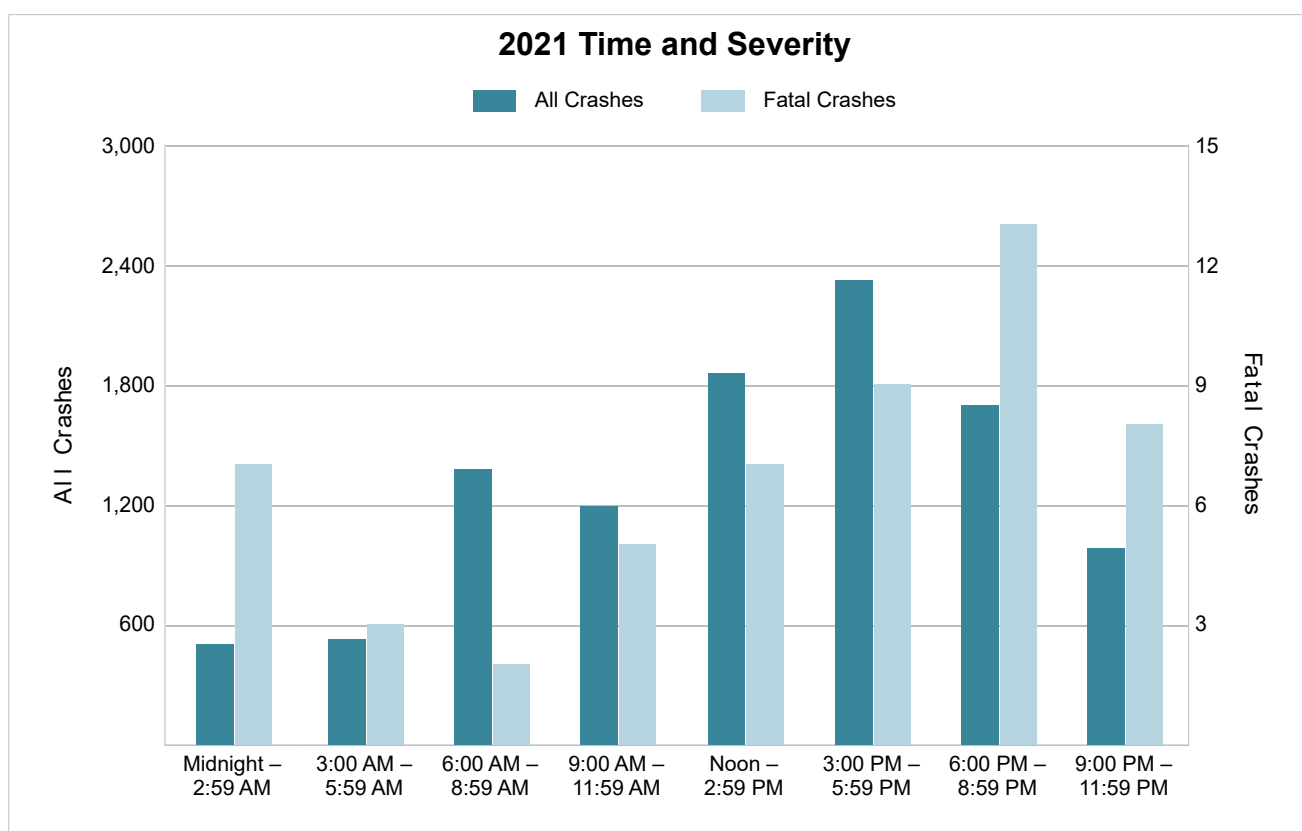


## 5-Year Trend Fatal Crashes by Time of Day



## 2021 - Time and Severity

Time of Day	All Crashes		Fatal Crashes		Injury Crashes			PDO Crashes
	Number	% of Total	Number	% of Fatal	A	B	C	Number
Midnight – 2:59 AM	499	4.8	7	13.0	13	39	39	401
3:00 AM – 5:59 AM	525	5.0	3	5.6	4	29	35	454
6:00 AM – 8:59 AM	1,378	13.2	2	3.7	27	33	110	1,206
9:00 AM – 11:59 AM	1,191	11.4	5	9.3	34	62	139	951
Noon – 2:59 PM	1,855	17.7	7	13.0	45	113	232	1,458
3:00 PM – 5:59 PM	2,321	22.2	9	16.7	44	155	268	1,845
6:00 PM – 8:59 PM	1,697	16.2	13	24.1	29	96	151	1,408
9:00 PM – 11:59 PM	980	9.4	8	14.8	27	56	80	809
Unknown	9	0.1	0	0.0	0	1	0	8
<b>Total</b>	<b>10,455</b>	<b>100.0</b>	<b>54</b>	<b>100.0</b>	<b>223</b>	<b>584</b>	<b>1,054</b>	<b>8,540</b>

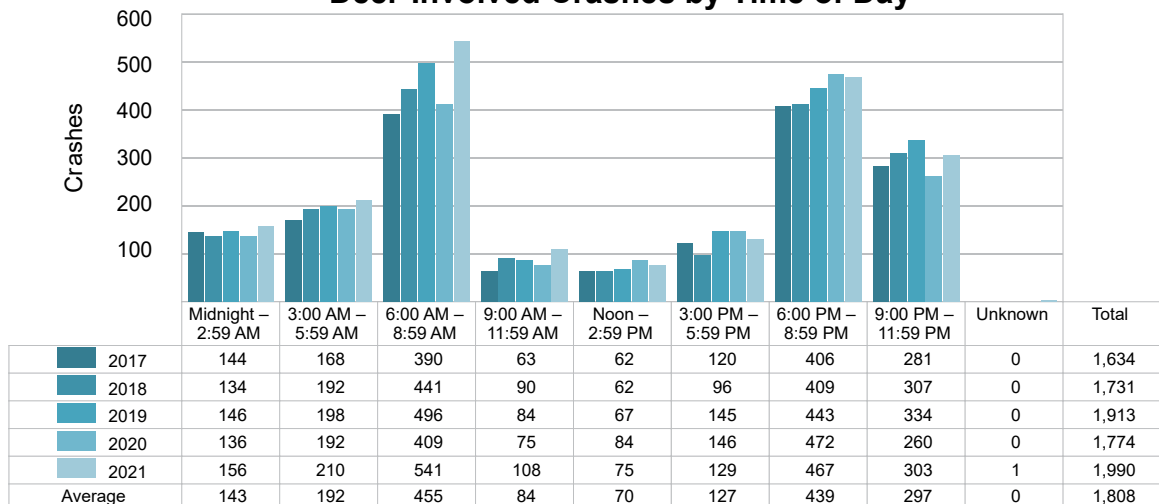




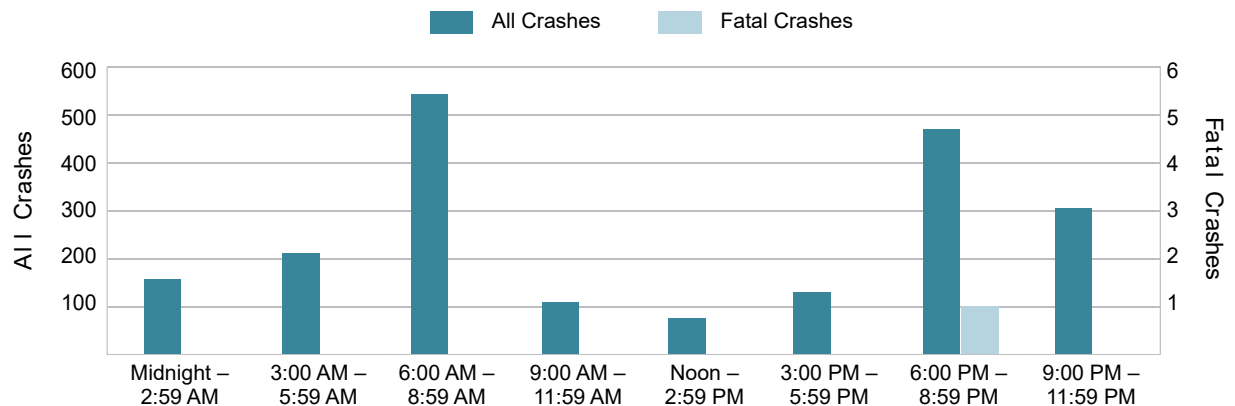
## 5-Year Trend - Deer-Involved Crashes by Time of Day

Time of Day	2017		2018		2019		2020		2021	
	Total Crashes	Fatal Crashes	Total Crashes	Fatal Crashes	Total Crashes	Fatal Crashes	Total Crashes	Fatal Crashes	Total Crashes	Fatal Crashes
Midnight – 2:59 AM	144	0	134	0	146	0	136	0	156	0
3:00 AM – 5:59 AM	168	0	192	0	198	0	192	0	210	0
6:00 AM – 8:59 AM	390	0	441	0	496	0	409	0	541	0
9:00 AM – 11:59 AM	63	0	90	0	84	0	75	0	108	0
Noon – 2:59 PM	62	0	62	0	67	0	84	0	75	0
3:00 PM – 5:59 PM	120	0	96	0	145	0	146	0	129	0
6:00 PM – 8:59 PM	406	0	409	0	443	0	472	0	467	1
9:00 PM – 11:59 PM	281	0	307	0	334	0	260	0	303	0
Unknown	0	0	0	0	0	0	0	0	1	0
<b>Total</b>	<b>1,634</b>	<b>0</b>	<b>1,731</b>	<b>0</b>	<b>1,913</b>	<b>0</b>	<b>1,774</b>	<b>0</b>	<b>1,990</b>	<b>1</b>

## 5-Year Trend Deer-Involved Crashes by Time of Day

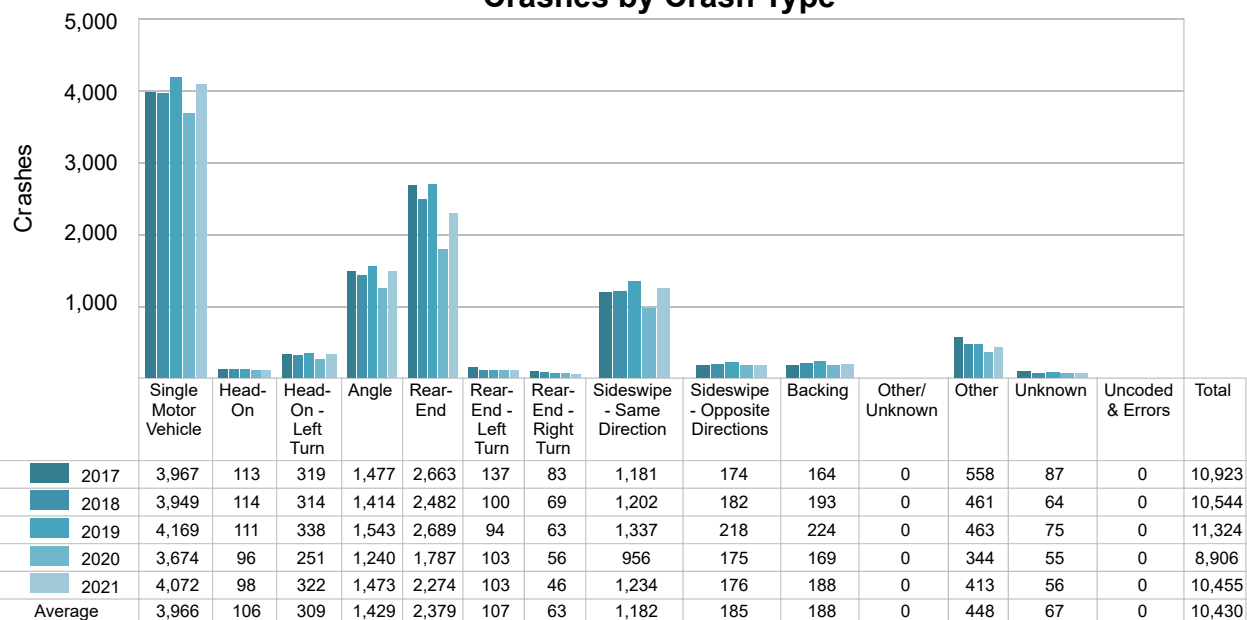


## 2021 Time and Severity of Deer-Involved Crashes



## 5-Year Trend - Crashes by Crash Type

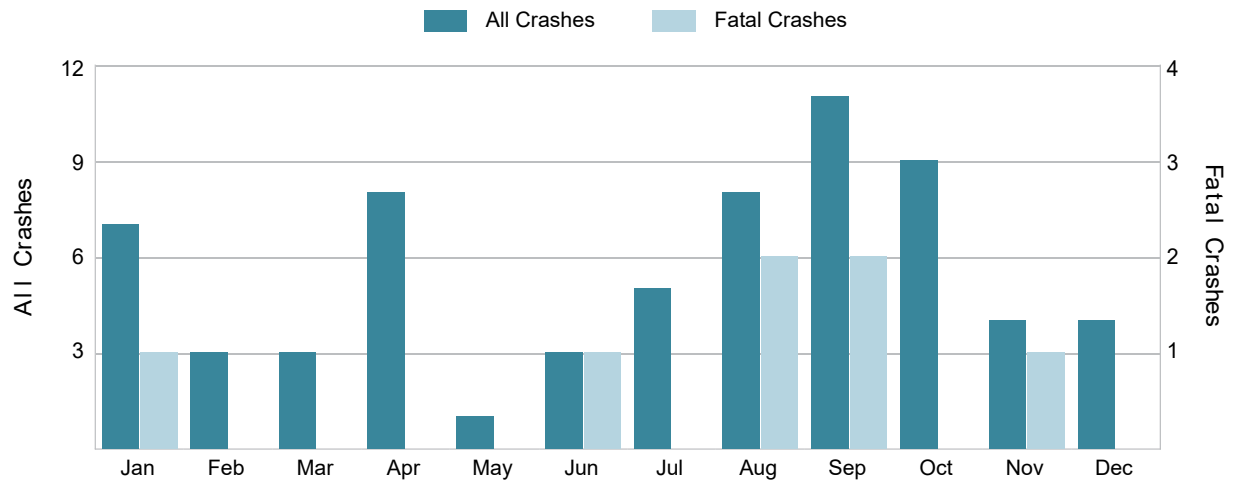
Crash Type	2017		2018		2019		2020		2021	
	Total Crashes	Fatal Crashes	Total Crashes	Fatal Crashes	Total Crashes	Fatal Crashes	Total Crashes	Fatal Crashes	Total Crashes	Fatal Crashes
Single Motor Vehicle	3,967	19	3,949	20	4,169	20	3,674	22	4,072	27
Head-On	113	5	114	3	111	5	96	0	98	5
Head-On - Left Turn	319	2	314	1	338	2	251	3	322	1
Angle	1,477	10	1,414	7	1,543	3	1,240	5	1,473	9
Rear-End	2,663	4	2,482	3	2,689	1	1,787	3	2,274	3
Rear-End - Left Turn	137	0	100	0	94	0	103	0	103	0
Rear-End - Right Turn	83	0	69	0	63	0	56	0	46	0
Sideswipe - Same Direction	1,181	1	1,202	0	1,337	1	956	0	1,234	1
Sideswipe - Opposite Directions	174	1	182	0	218	0	175	0	176	1
Backing	164	0	193	0	224	0	169	0	188	0
Other/Unknown	0	0	0	0	0	0	0	0	0	0
Other	558	2	461	4	463	2	344	1	413	6
Unknown	87	0	64	0	75	0	55	0	56	1
Uncoded & Errors	0	0	0	0	0	0	0	0	0	0
<b>Total</b>	<b>10,923</b>	<b>44</b>	<b>10,544</b>	<b>38</b>	<b>11,324</b>	<b>34</b>	<b>8,906</b>	<b>34</b>	<b>10,455</b>	<b>54</b>

5-Year Trend  
Crashes by Crash Type

5-Year Trend - Pedestrian-Involved Crashes by Month

Month	2017		2018		2019		2020		2021	
	Total Crashes	Fatal Crashes	Total Crashes	Fatal Crashes	Total Crashes	Fatal Crashes	Total Crashes	Fatal Crashes	Total Crashes	Fatal Crashes
January	10	1	6	0	8	0	9	2	7	1
February	5	0	6	0	5	1	8	0	3	0
March	4	0	6	1	7	0	7	0	3	0
April	3	0	5	0	5	0	2	1	8	0
May	6	0	4	0	8	0	3	0	1	0
June	7	1	4	0	6	0	10	1	3	1
July	9	1	9	0	4	0	3	0	5	0
August	4	1	2	1	6	0	5	1	8	2
September	17	1	8	0	13	0	8	1	11	2
October	12	1	9	1	12	1	4	1	9	0
November	11	0	8	0	9	1	6	1	4	1
December	5	0	9	2	7	1	4	0	4	0
<b>Total</b>	<b>93</b>	<b>6</b>	<b>76</b>	<b>5</b>	<b>90</b>	<b>4</b>	<b>69</b>	<b>8</b>	<b>66</b>	<b>7</b>

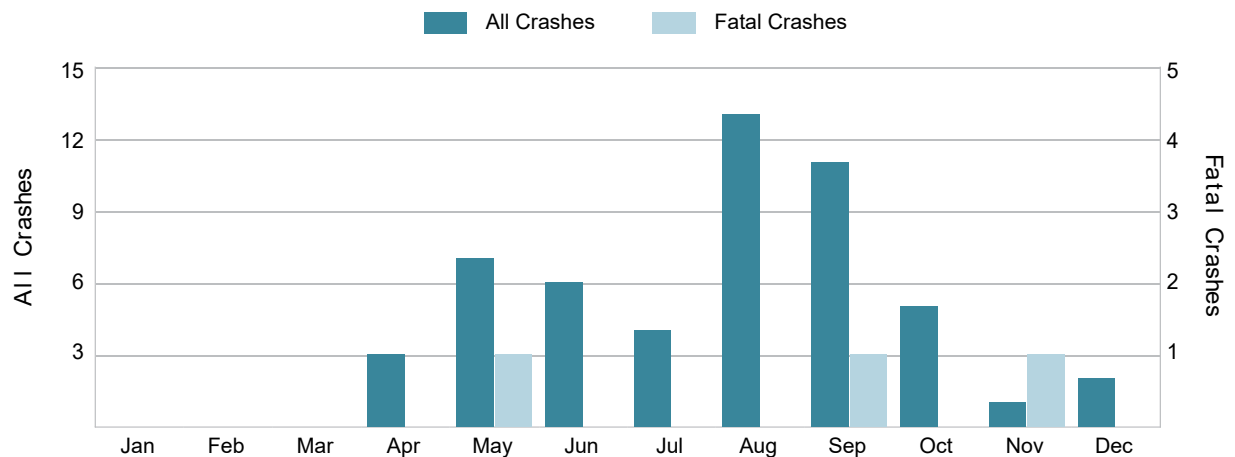
2021 Pedestrian-Involved Crashes by Month



## 5-Year Trend - Bicyclist-Involved Crashes by Month

Month	2017		2018		2019		2020		2021	
	Total Crashes	Fatal Crashes	Total Crashes	Fatal Crashes	Total Crashes	Fatal Crashes	Total Crashes	Fatal Crashes	Total Crashes	Fatal Crashes
January	0	0	1	0	1	0	2	0	0	0
February	4	0	0	0	0	0	1	0	0	0
March	4	0	8	0	3	0	2	0	0	0
April	5	0	1	0	5	0	5	0	3	0
May	4	0	8	0	2	0	4	0	7	1
June	9	0	10	0	4	0	5	0	6	0
July	11	1	12	1	10	0	12	0	4	0
August	8	1	15	0	13	0	8	0	13	0
September	5	0	14	0	10	0	5	1	11	1
October	4	0	8	0	5	0	3	0	5	0
November	2	0	1	0	2	0	3	0	1	1
December	0	0	1	0	3	0	1	0	2	0
<b>Total</b>	<b>56</b>	<b>2</b>	<b>79</b>	<b>1</b>	<b>58</b>	<b>0</b>	<b>51</b>	<b>1</b>	<b>52</b>	<b>3</b>

## 2021 Bicyclist-Involved Crashes by Month



## 2021 - Reported Motor Vehicle Crashes by County

County	Crashes												
	Total	Fatal	Injury	Property Damage	Inter-State	US Route	State Route	Local Street	Alcohol-Involved	Drug-Involved	Deer-Involved	Pedestrian-Involved	Bicyclist-Involved
Kalamazoo	8,236	38	1,490	6,708	568	345	1,170	6,138	279	84	1,137	55	44
Van Buren	2,219	16	371	1,832	391	0	463	1,359	93	42	853	11	8
<b>Total</b>	<b>10,455</b>	<b>54</b>	<b>1,861</b>	<b>8,540</b>	<b>959</b>	<b>345</b>	<b>1,633</b>	<b>7,497</b>	<b>372</b>	<b>126</b>	<b>1,990</b>	<b>66</b>	<b>52</b>

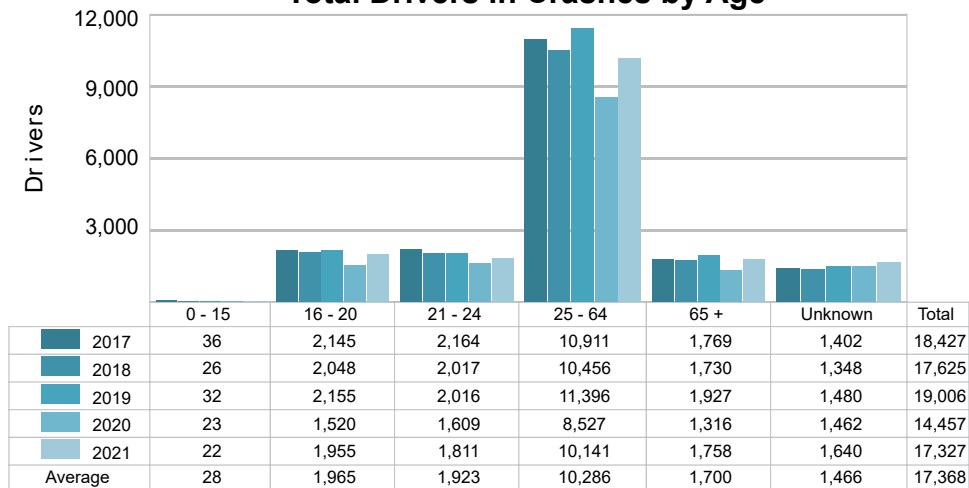
## 2021 - People in Reported Motor Vehicle Crashes by County

County	People					
	Fatalities	Suspected Serious Injuries	Suspected Minor Injuries	Possible Injuries	No Injuries	Uncoded & Errors
Kalamazoo	39	397	1,121	2,256	13,571	1,560
Van Buren	17	122	295	397	3,125	121
<b>Total</b>	<b>56</b>	<b>519</b>	<b>1,416</b>	<b>2,653</b>	<b>16,696</b>	<b>1,681</b>

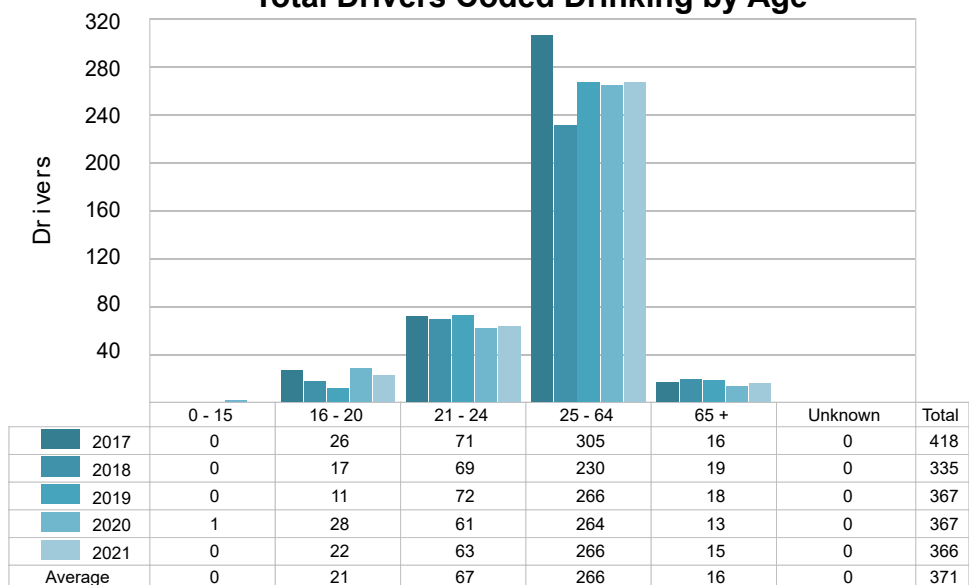
## 5-Year Trend - Drivers in Crashes Coded Drinking by Driver Age

Driver Age	2017		2018		2019		2020		2021	
	Total Drivers in Crashes	Total Drivers Coded Drinking	Total Drivers in Crashes	Total Drivers Coded Drinking	Total Drivers in Crashes	Total Drivers Coded Drinking	Total Drivers in Crashes	Total Drivers Coded Drinking	Total Drivers in Crashes	Total Drivers Coded Drinking
0 - 15	36	0	26	0	32	0	23	1	22	0
16 - 20	2,145	26	2,048	17	2,155	11	1,520	28	1,955	22
21 - 24	2,164	71	2,017	69	2,016	72	1,609	61	1,811	63
25 - 64	10,911	305	10,456	230	11,396	266	8,527	264	10,141	266
65 +	1,769	16	1,730	19	1,927	18	1,316	13	1,758	15
Unknown	1,402	0	1,348	0	1,480	0	1,462	0	1,640	0
<b>Total</b>	<b>18,427</b>	<b>418</b>	<b>17,625</b>	<b>335</b>	<b>19,006</b>	<b>367</b>	<b>14,457</b>	<b>367</b>	<b>17,327</b>	<b>366</b>

**5-Year Trend**  
**Total Drivers in Crashes by Age**



**5-Year Trend**  
**Total Drivers Coded Drinking by Age**



### 2021 - Bodily Alcohol Concentration (BAC) Results Among All Vehicle Drivers in Alcohol-Involved Crashes by Age

Age Group	Drivers				BAC Result Range for Drivers Coded Drinking				
	Total Drivers in Alcohol-Involved Crashes	Total Drivers Tested in all Crashes	Total Drivers Coded Drinking, Tested	Total Drivers Coded Drinking	BAC = 0.00	BAC 0.01 g/dL to 0.07 g/dL	BAC 0.08 g/dL to 0.16 g/dL	BAC 0.17 g/dL and Above	BAC Not Reported
0 - 15	0	0	0	0	0	0	0	0	0
16 - 20	32	33	19	22	0	3	6	7	6
21 - 24	74	76	55	63	1	4	24	18	16
25 - 64	360	335	235	266	0	11	58	112	85
65 +	28	31	15	15	0	1	3	5	6
Unknown	42	0	0	0	0	0	0	0	0
<b>Total</b>	<b>536</b>	<b>475</b>	<b>324</b>	<b>366</b>	<b>1</b>	<b>19</b>	<b>91</b>	<b>142</b>	<b>113</b>

Notes: BAC measured in grams (g) per deciliter (dL).

BAC may not be reported if drivers are not tested or if the results are not available immediately (as in the case of a blood test).

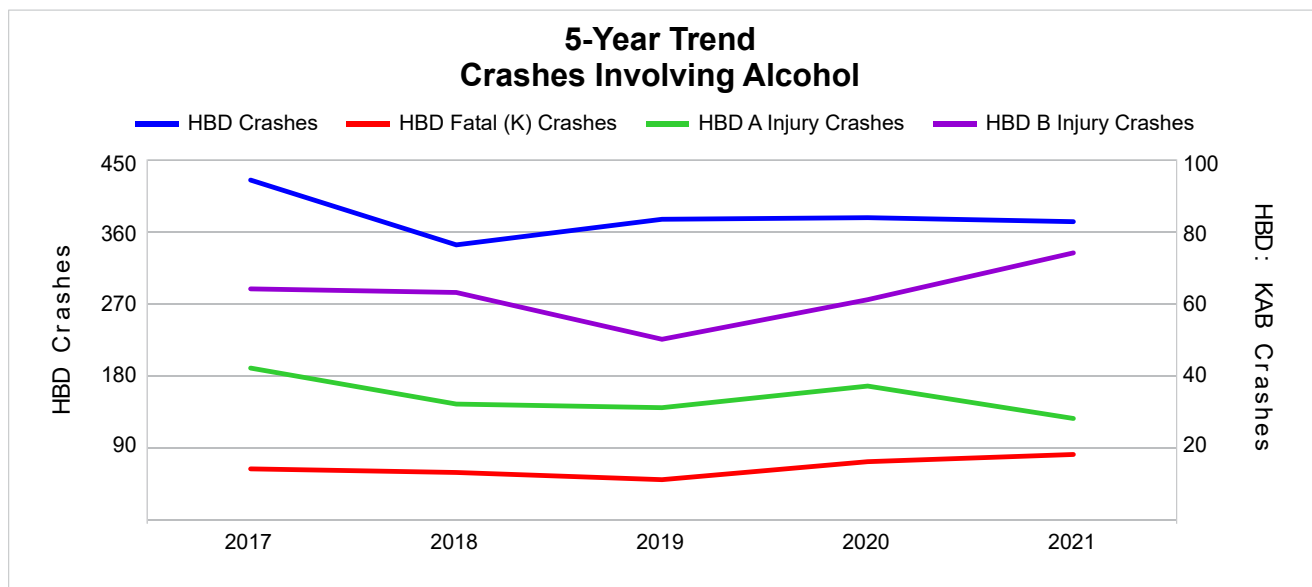
A driver may be coded by the officer as drinking even though no test is administered.

### 5-Year Trend - Crashes Involving Alcohol

Year	All Crashes	HBD Crashes	% HBD	Fatal Crashes	HBD Fatal Crashes	% HBD	A Injury Crashes	HBD A Injury Crashes	% HBD	B Injury Crashes	HBD B Injury Crashes	% HBD
2017	10,923	424	3.9	44	14	31.8	206	42	20.4	529	64	12.1
2018	10,544	343	3.3	38	13	34.2	202	32	15.8	512	63	12.3
2019	11,324	375	3.3	34	11	32.4	222	31	14.0	515	50	9.7
2020	8,906	377	4.2	34	16	47.1	198	37	18.7	438	61	13.9
2021	10,455	372	3.6	54 **	18 **	33.3	223 **	28 *	12.6 *	584 **	74 **	12.7

Note: \* Indicates that the most recent year is the lowest number or percentage reported in the 5-year period in that column.

\*\* Indicates that the most recent year is the highest number or percentage reported in the 5-year period in that column.



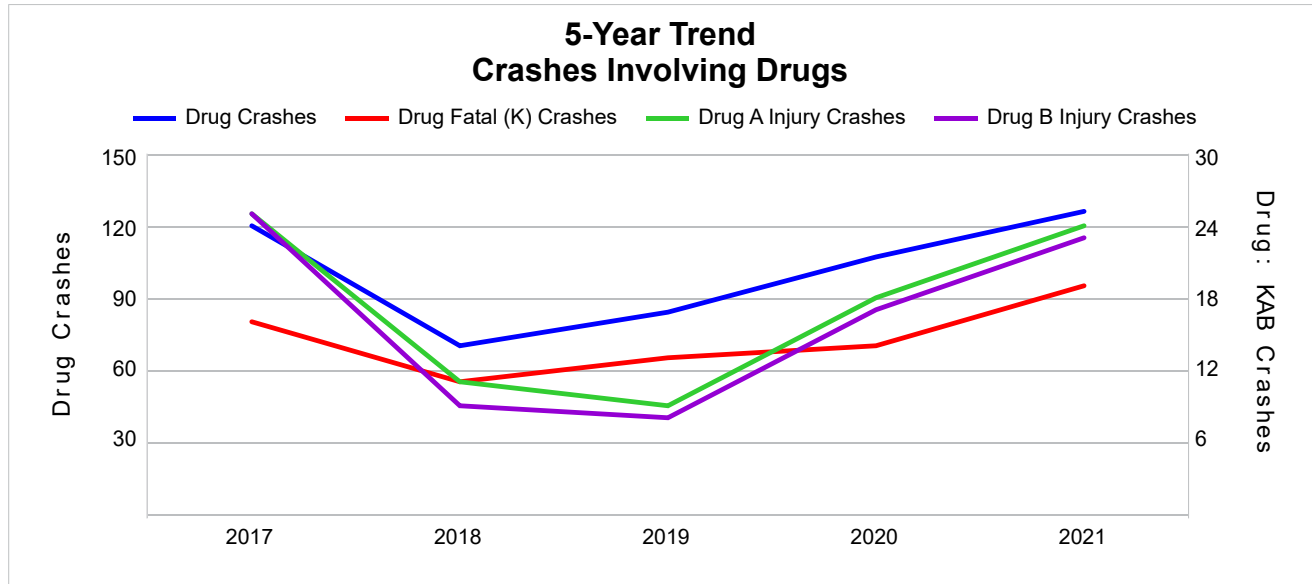
Note: Had-Been-Drinking (HBD)

## 5-Year Trend - Crashes Involving Drugs

Year	All Crashes	Drug Crashes	% Drug	Fatal Crashes	Drug Fatal Crashes	% Drug	A Injury Crashes	Drug A Injury Crashes	% Drug	B Injury Crashes	Drug B Injury Crashes	% Drug
2017	10,923	120	1.1	44	16	36.4	206	25	12.1	529	25	4.7
2018	10,544	70	0.7	38	11	28.9	202	11	5.4	512	9	1.8
2019	11,324	84	0.7	34	13	38.2	222	9	4.1	515	8	1.6
2020	8,906	107	1.2	34	14	41.2	198	18	9.1	438	17	3.9
2021	10,455	126 **	1.2 **	54 **	19 **	35.2	223 **	24	10.8	584 **	23	3.9

Note: \* Indicates that the most recent year is the lowest number or percentage reported in the 5-year period in that column.

\*\* Indicates that the most recent year is the highest number or percentage reported in the 5-year period in that column.



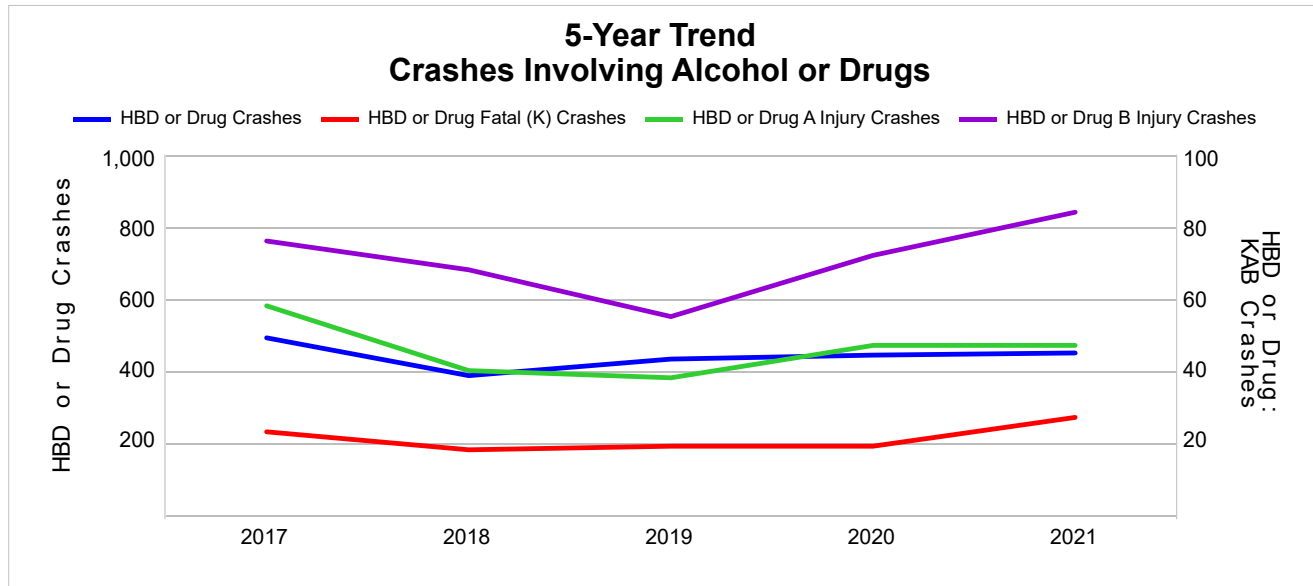


## 5-Year Trend - Crashes Involving Alcohol or Drugs

Year	All Crashes	HBD or Drug Crashes	% HBD or Drug	Fatal Crashes	HBD or Drug Fatal Crashes	% HBD or Drug	A Injury Crashes	HBD or Drug A Injury Crashes	% HBD or Drug	B Injury Crashes	HBD or Drug B Injury Crashes	% HBD or Drug
2017	10,923	491	4.5	44	23	52.3	206	58	28.2	529	76	14.4
2018	10,544	386	3.7	38	18	47.4	202	40	19.8	512	68	13.3
2019	11,324	432	3.8	34	19	55.9	222	38	17.1	515	55	10.7
2020	8,906	443	5.0	34	19	55.9	198	47	23.7	438	72	16.4
2021	10,455	449	4.3	54 **	27 **	50.0	223 **	47	21.1	584 **	84 **	14.4

Note: \* Indicates that the most recent year is the lowest number or percentage reported in the 5-year period in that column.

\*\* Indicates that the most recent year is the highest number or percentage reported in the 5-year period in that column.



Note: Had-Been-Drinking (HBD)

## 2021 - Restraints Worn Among Vehicle Drivers and Injured Passengers by Vehicle Type

Vehicle Type	Total Occupants			Fatalities			A - Suspected Serious			B - Suspected Minor			C - Possible Injury			No Injury		
	Total	Used Restraint	%	Total	Used Restraint	%	Total	Used Restraint	%	Total	Used Restraint	%	Total	Used Restraint	%	Total	Used Restraint	%
Passenger Car, SUV, Van	14,493	12,408	85.6	32	16	50.0	173	118	68.2	566	496	87.6	1,308	1,184	90.5	11,623	10,594	91.1
Motor Home	44	40	90.9	0	0	0.0	0	0	0.0	2	2	100.0	6	6	100.0	33	32	97.0
Pickup Truck	1,770	1,527	86.3	5	1	20.0	19	14	73.7	58	48	82.8	132	115	87.1	1,444	1,349	93.4
Small Truck Under 10,000 lbs. GVWR	70	51	72.9	0	0	0.0	2	2	100.0	2	1	50.0	0	0	0.0	54	48	88.9
Motorcycle	151	70	46.4	8	4	50.0	44	23	52.3	43	21	48.8	20	9	45.0	26	13	50.0
Moped/Goped	16	5	31.3	0	0	0.0	4	1	25.0	6	2	33.3	4	2	50.0	1	0	0.0
Go-Cart/Golf Cart	2	0	0.0	0	0	0.0	0	0	0.0	0	0	0.0	1	0	0.0	0	0	0.0
Snowmobile	0	0	0.0	0	0	0.0	0	0	0.0	0	0	0.0	0	0	0.0	0	0	0.0
Off-Road Vehicle (ORV)/All-Terrain Vehicle (ATV)	8	0	0.0	1	0	0.0	2	0	0.0	2	0	0.0	0	0	0.0	2	0	0.0
Other (non-registered farm equipment, construction equipment, snow plows, etc.)	53	32	60.4	0	0	0.0	0	0	0.0	3	2	66.7	3	2	66.7	38	28	73.7
Truck/Bus (over 10,000 lbs. GVWR/ 8+ occupants/hazmat placard)	628	557	88.7	0	0	0.0	2	1	50.0	13	11	84.6	30	27	90.0	554	518	93.5
Uncoded & Errors	707	0	0.0	0	0	0.0	0	0	0.0	0	0	0.0	0	0	0.0	0	0	0.0
<b>Total</b>	<b>17,942</b>	<b>14,690</b>	<b>81.9</b>	<b>46</b>	<b>21</b>	<b>45.7</b>	<b>246</b>	<b>159</b>	<b>64.6</b>	<b>695</b>	<b>583</b>	<b>83.9</b>	<b>1,504</b>	<b>1,345</b>	<b>89.4</b>	<b>13,775</b>	<b>12,582</b>	<b>91.3</b>

Note: Restraint Use includes shoulder belt only used, lap belt only used, both lap and shoulder belts used, child restraint used, restraint failure, and helmet worn.

## 2021 - Restraints Worn Among Vehicle Drivers and Injured Passengers by Age

Age Group	Total Occupants			Fatalities			A - Suspected Serious			B - Suspected Minor			C - Possible Injury			No Injury		
	Total	Used Restraint	%	Total	Used Restraint	%	Total	Used Restraint	%	Total	Used Restraint	%	Total	Used Restraint	%	Total	Used Restraint	%
0 - 15	180	154	85.6	0	0	0.0	6	2	33.3	46	39	84.8	110	100	90.9	18	13	72.2
16 - 20	2,052	1,854	90.4	0	0	0.0	27	17	63.0	90	74	82.2	195	170	87.2	1,738	1,593	91.7
21 - 24	1,876	1,654	88.2	3	1	33.3	27	18	66.7	97	76	78.4	167	139	83.2	1,576	1,420	90.1
25 - 64	10,377	9,340	90.0	32	14	43.8	156	99	63.5	372	309	83.1	864	778	90.0	8,924	8,140	91.2
65 +	1,817	1,688	92.9	11	6	54.5	30	23	76.7	90	85	94.4	168	158	94.0	1,518	1,416	93.3
Unknown	1,640	0	0.0	0	0	0.0	0	0	0.0	0	0	0.0	0	0	0.0	1	0	0.0
<b>Total</b>	<b>17,942</b>	<b>14,690</b>	<b>81.9</b>	<b>46</b>	<b>21</b>	<b>45.7</b>	<b>246</b>	<b>159</b>	<b>64.6</b>	<b>695</b>	<b>583</b>	<b>83.9</b>	<b>1,504</b>	<b>1,345</b>	<b>89.4</b>	<b>13,775</b>	<b>12,582</b>	<b>91.3</b>

Note: Restraint Use includes shoulder belt only used, lap belt only used, both lap and shoulder belts used, child restraint used, restraint failure, and helmet worn.

## 5-Year Trend - Restraint Use Among Drivers

Restraint Use	2017			2018			2019			2020			2021		
	Drivers	Fatal Drivers	Injured Drivers	Drivers	Fatal Drivers	Injured Drivers	Drivers	Fatal Drivers	Injured Drivers	Drivers	Fatal Drivers	Injured Drivers	Drivers	Fatal Drivers	Injured Drivers
No Belts Available	21	0	4	26	0	2	27	0	10	34	0	5	52	0	3
Shoulder Belt Only Used	129	0	22	91	0	8	110	1	14	103	0	11	121	0	10
Lap Belt Only Used	62	1	9	62	0	9	42	0	8	20	0	2	37	0	4
Both Lap & Shoulder Belt Used	15,311	18	1,586	14,691	7	1,528	16,030	12	1,565	11,550	10	1,145	13,952	14	1,523
No Belts Used	102	3	38	87	8	42	86	9	31	94	3	43	93	10	48
Child Restraint Used - Forward Facing	0	0	0	0	0	0	0	0	0	0	0	0	0	0	0
Child Restraint Not Used, Unavailable or Improper Use	0	0	0	0	0	0	0	0	0	0	0	0	0	0	0
Child Restraint Used - Rear Facing	0	0	0	0	0	0	0	0	0	0	0	0	0	0	0
Child Restraint Used - Booster Seat	0	0	0	0	0	0	0	0	0	0	0	0	0	0	0
Restraint Failure	7	0	2	6	0	0	10	0	1	6	0	1	12	0	2
Restraint Use Unknown	2,659	3	127	2,548	7	111	2,573	5	87	2,504	2	97	2,909	6	133
Helmet Worn	80	3	52	66	0	51	60	0	43	70	0	55	72	4	55
Helmet Not Worn	46	3	37	44	2	37	58	1	48	68	4	51	68	5	55
Helmet Use Unknown	7	0	4	4	1	2	10	0	6	8	0	6	10	0	4
Uncoded & Errors	3	0	1	0	0	0	0	0	0	0	0	0	1	0	0
<b>Total</b>	<b>18,427</b>	<b>31</b>	<b>1,882</b>	<b>17,625</b>	<b>25</b>	<b>1,790</b>	<b>19,006</b>	<b>28</b>	<b>1,813</b>	<b>14,457</b>	<b>19</b>	<b>1,416</b>	<b>17,327</b>	<b>39</b>	<b>1,837</b>

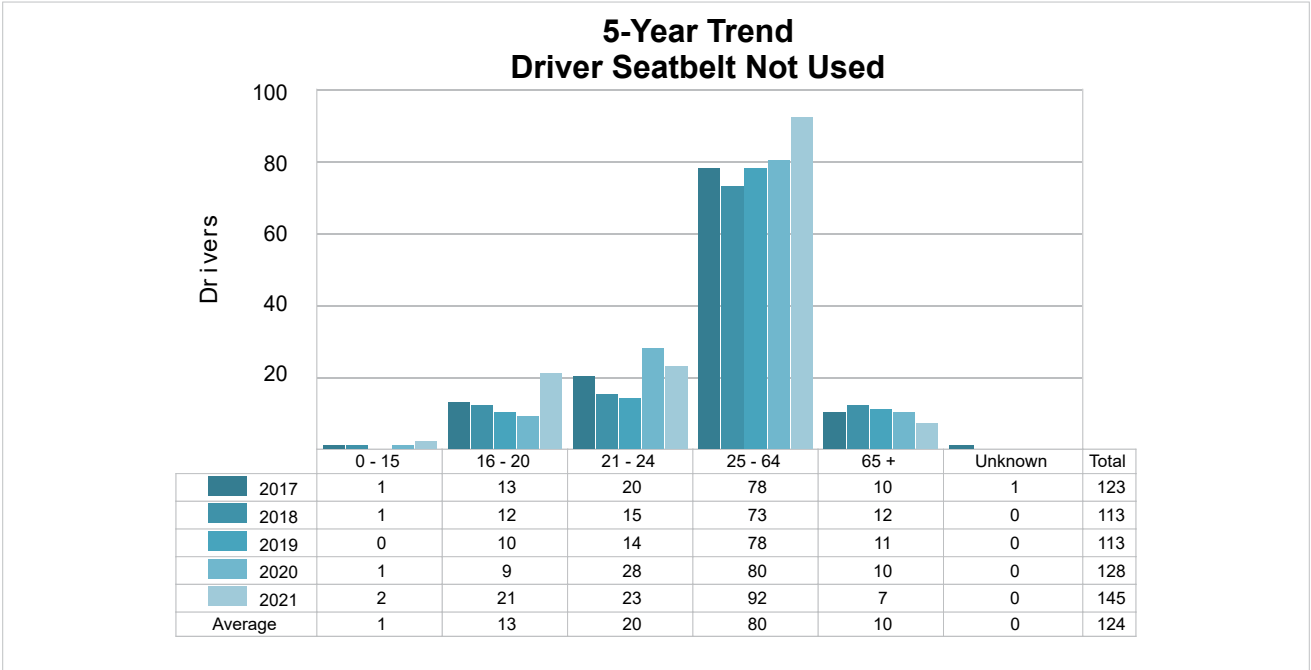
## 5-Year Trend - Restraint Use Among Drivers Coded Drinking

Restraint Use	2017			2018			2019			2020			2021		
	Drivers	Fatal Drivers	Injured Drivers	Drivers	Fatal Drivers	Injured Drivers	Drivers	Fatal Drivers	Injured Drivers	Drivers	Fatal Drivers	Injured Drivers	Drivers	Fatal Drivers	Injured Drivers
No Belts Available	0	0	0	0	0	0	2	0	2	1	0	1	1	0	0
Shoulder Belt Only Used	2	0	1	0	0	0	1	0	0	3	0	1	3	0	1
Lap Belt Only Used	1	0	0	2	0	1	1	0	1	0	0	0	0	0	0
Both Lap & Shoulder Belt Used	256	4	70	220	1	77	250	3	64	248	1	72	242	3	76
No Belts Used	17	2	12	18	3	13	14	3	8	15	1	9	21	5	14
Child Restraint Used - Forward Facing	0	0	0	0	0	0	0	0	0	0	0	0	0	0	0
Child Restraint Not Used, Unavailable or Improper Use	0	0	0	0	0	0	0	0	0	0	0	0	0	0	0
Child Restraint Used - Rear Facing	0	0	0	0	0	0	0	0	0	0	0	0	0	0	0
Child Restraint Used - Booster Seat	0	0	0	0	0	0	0	0	0	0	0	0	0	0	0
Restraint Failure	0	0	0	0	0	0	0	0	0	0	0	0	0	0	0
Restraint Use Unknown	125	2	31	85	1	27	89	2	23	88	1	25	87	1	23
Helmet Worn	6	1	4	0	0	0	2	0	2	3	0	2	2	0	2
Helmet Not Worn	10	1	9	10	2	7	8	1	7	8	1	5	9	3	5
Helmet Use Unknown	1	0	1	0	0	0	0	0	0	1	0	1	1	0	0
Uncoded & Errors	0	0	0	0	0	0	0	0	0	0	0	0	0	0	0
<b>Total</b>	<b>418</b>	<b>10</b>	<b>128</b>	<b>335</b>	<b>7</b>	<b>125</b>	<b>367</b>	<b>9</b>	<b>107</b>	<b>367</b>	<b>4</b>	<b>116</b>	<b>366</b>	<b>12</b>	<b>121</b>

5-Year Trend - Seatbelt Not Used Among Drivers by Age

Age Group	2017			2018			2019			2020			2021		
	Drivers	Fatal Drivers	Injured Drivers	Drivers	Fatal Drivers	Injured Drivers	Drivers	Fatal Drivers	Injured Drivers	Drivers	Fatal Drivers	Injured Drivers	Drivers	Fatal Drivers	Injured Drivers
0 - 15	1	0	0	1	0	0	0	0	0	1	0	0	2	0	0
16 - 20	13	0	3	12	1	4	10	0	5	9	0	6	21	0	9
21 - 24	20	0	8	15	1	6	14	0	6	28	0	11	23	2	9
25 - 64	78	3	26	73	5	31	78	9	25	80	3	29	92	6	31
65 +	10	0	5	12	1	3	11	0	5	10	0	2	7	2	2
Unknown	1	0	0	0	0	0	0	0	0	0	0	0	0	0	0
Total	123	3	42	113	8	44	113	9	41	128	3	48	145	10	51

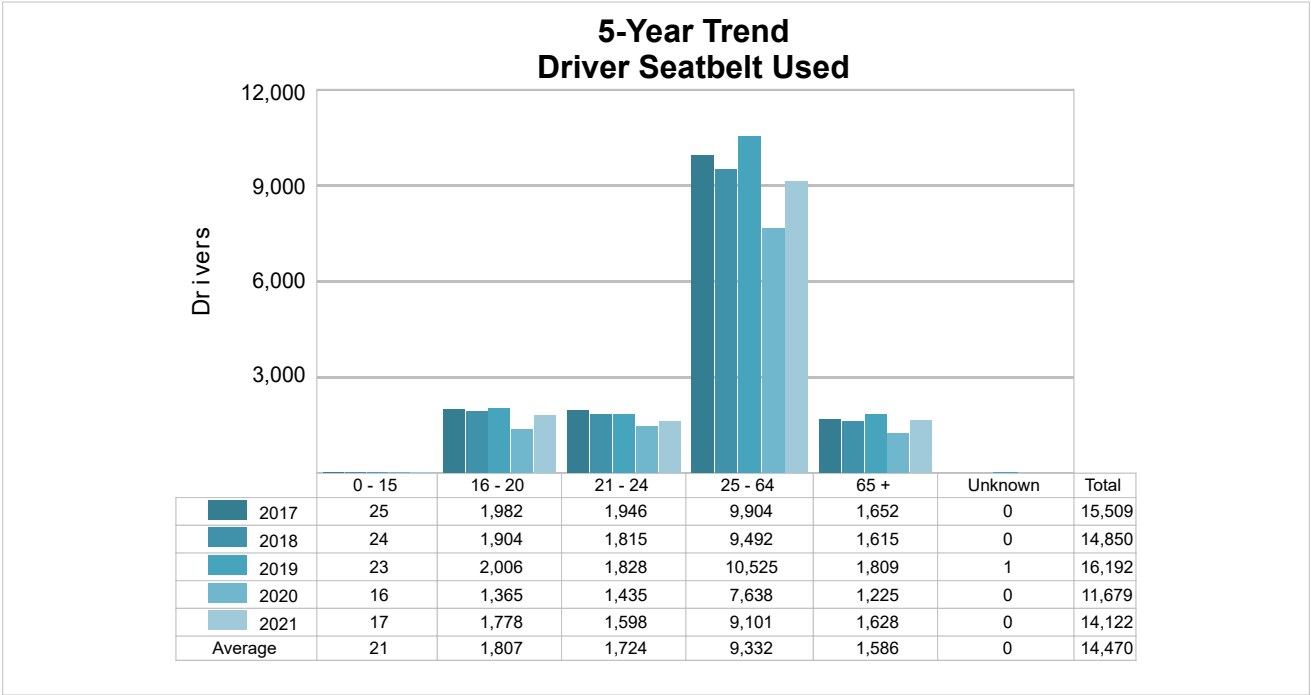
Note: Seatbelt Not Used includes no belts available or no belts used.



5-Year Trend - Seatbelt Used Among Drivers by Age

Age Group	2017			2018			2019			2020			2021		
	Drivers	Fatal Drivers	Injured Drivers	Drivers	Fatal Drivers	Injured Drivers	Drivers	Fatal Drivers	Injured Drivers	Drivers	Fatal Drivers	Injured Drivers	Drivers	Fatal Drivers	Injured Drivers
0 - 15	25	0	3	24	0	4	23	0	1	16	0	4	17	0	4
16 - 20	1,982	0	188	1,904	0	193	2,006	0	185	1,365	1	141	1,778	0	185
21 - 24	1,946	1	178	1,815	0	194	1,828	1	181	1,435	1	144	1,598	0	179
25 - 64	9,904	12	1,018	9,492	4	950	10,525	6	1,041	7,638	4	730	9,101	10	960
65 +	1,652	6	232	1,615	3	204	1,809	6	179	1,225	4	140	1,628	4	211
Unknown	0	0	0	0	0	0	1	0	1	0	0	0	0	0	0
Total	15,509	19	1,619	14,850	7	1,545	16,192	13	1,588	11,679	10	1,159	14,122	14	1,539

Note: Seatbelt Used includes shoulder belt only used, lap belt only used, both lap and shoulder belts used, and restraint failure.



## 5-Year Trend - Drivers in Crashes by Hazardous Action

Hazardous Action	2017		2018		2019		2020		2021	
	Total Drivers in Crashes	Drivers in Fatal Crashes	Total Drivers in Crashes	Drivers in Fatal Crashes	Total Drivers in Crashes	Drivers in Fatal Crashes	Total Drivers in Crashes	Drivers in Fatal Crashes	Total Drivers in Crashes	Drivers in Fatal Crashes
None	9,377	39	9,062	19	9,844	16	7,521	19	9,100	34
Speed Too Fast	1,344	5	1,217	8	1,408	5	826	5	923	12
Speed Too Slow	15	0	19	1	7	0	8	0	3	0
Failed to Yield	1,529	3	1,461	5	1,541	2	1,227	3	1,451	2
Disregard Traffic Control	395	6	393	4	388	4	332	4	397	2
Drove Wrong Way	12	1	17	0	10	0	12	0	9	0
Drove Left of Center	86	3	92	1	88	4	102	1	96	3
Improper Passing	87	0	96	1	93	0	63	0	88	1
Improper Lane Use	496	1	458	0	473	3	337	0	502	2
Improper Turn	252	1	267	0	244	0	231	1	255	0
Improper/No Signal	14	0	11	0	21	0	12	0	15	0
Improper Backing	198	0	216	0	211	0	155	0	185	0
Unable to Stop in Assured Clear Distance	2,626	4	2,401	1	2,494	2	1,684	2	2,074	2
Other	697	3	629	4	746	1	575	2	650	7
Unknown	791	6	856	5	1,004	9	979	10	1,182	17
Reckless Driving	89	2	80	4	77	0	96	2	79	2
Careless/Negligent Driving	416	5	347	3	357	3	297	1	318	3
Uncoded & Errors	3	0	3	0	0	0	0	0	0	0
<b>Total</b>	<b>18,427</b>	<b>79</b>	<b>17,625</b>	<b>56</b>	<b>19,006</b>	<b>49</b>	<b>14,457</b>	<b>50</b>	<b>17,327</b>	<b>87</b>

### Office of Highway Safety Planning

---

Physical Address:  
7150 Harris Drive  
Dimondale, Michigan 48821

Mailing Address:  
P.O. Box 30634  
Lansing, Michigan 48909

Find us on the web:  
[MichiganTrafficCrashFacts.org](http://MichiganTrafficCrashFacts.org)  
[mtcf-info@umich.edu](mailto:mtcf-info@umich.edu)

