



2021

**MTCF**  
Michigan Traffic  
Crash Facts

# Michigan Traffic Crash Facts

## Reporting Criteria

Please pay particular attention to the wording when interpreting the three levels of data gathered for this report.

### Crash

The Crash Level analyzes data related to crash events and returns one result per crash.

Examples: Time, weather, and location.

### Units

The Units Level analyzes the experience of the units in the crash and returns one result per vehicle, driver, pedestrian, bicyclist, or train.

Examples: Vehicle type, driver condition, and unit events.

### People

The People Level analyzes the experience of the people involved in the crash and returns one result per occupant/person/party.

Examples: Age, injury severity, and seat belt or helmet use.

### **KABCO Injury Indicator:**

K = Killed

A = Suspected Serious Injury

B = Suspected Minor Injury

C = Possible Injury

O = No Injury

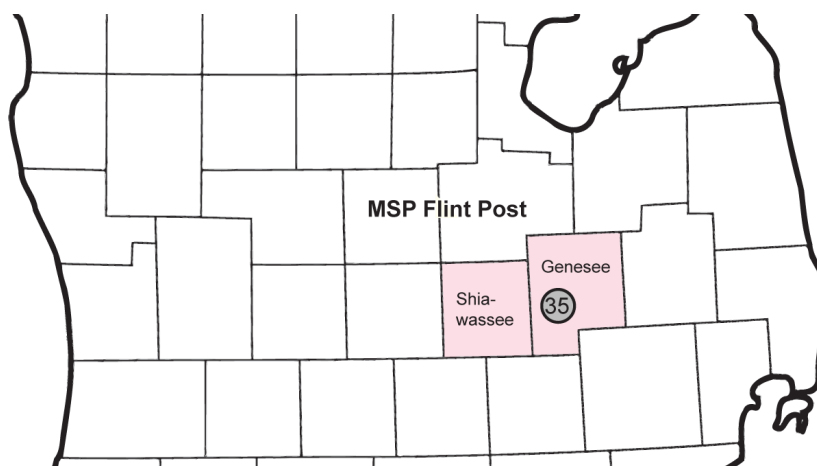
Property Damage Only (PDO)



## Michigan State Police (MSP) Post 35 - Flint

### 2021 Traffic Crash Data & 2017-2021 5-Year Trends

MSP Post 35 - Flint is comprised of Genesee and Shiawassee counties. Trend tables for this report are based on those counties.



### Sources:

The crashes in this report occurred on public roadways in Michigan and resulted in injuries, fatalities, or property damage (with \$1,000 as a reporting threshold). The information was gathered from Michigan Traffic Crash Report Forms (UD-10) submitted by local police departments, sheriff's offices, and the Michigan State Police. Other related information was obtained from the departments of Transportation, State, and Community Health.

## MSP Post 35 - Flint

- There were 12,707 crashes in Post 35 during 2021. [Page 1]
- A total of 66 fatalities resulted from 64 fatal crashes in 2021 in Post 35. [Page 1]
- There were 3,614 injuries and 2,584 injury crashes. [Page 1]
- There were 10,059 property damage only crashes (no fatalities or injuries). [Page 1]
- November had the highest number of crashes (1,351). [Pages 1-2]
- June and July had the highest number of fatal crashes (10) and fatalities (10). [Pages 1-2]
- June had the highest number of injury crashes (275) and injuries (405). [Page 1]
- November had the highest number of property damage only crashes (1,117). [Page 1]
- Of all vehicles involved in fatal crashes, 16 (16.0%) were motorcycles. [Page 1]
- Friday was the day of the week with the highest number of crashes (2,085) and Sunday had the highest number of fatal crashes (16). [Pages 2-3]
- The 3:00 PM – 5:59 PM time period had the highest number of crashes (2,685). This holds true for every year between 2017 and 2021. The Midnight – 2:59 AM time period had the highest number of fatal crashes (15). [Pages 5-6]
- During the period from 2017 to 2021, the highest number of deer crashes occurred in 2019 (2,248). The 6:00 PM – 8:59 PM time period consistently had the highest number of deer-involved crashes during the five-year period. There were 0 fatal crashes involving deer in 2021. [Page 7]
- Genesee County (83.4%) had the highest number of crashes in Post 35 in 2021, followed by Shiawassee County (16.6%). [Page 11]
- Genesee County (90.9%) had the highest number of fatalities in Post 35 in 2021, followed by Shiawassee County (9.1%). [Page 11]
- The highest number of drivers in crashes (21,679) occurred during 2019 and the highest number of drivers coded drinking in crashes (445) occurred during 2021 within the five year period between 2017 and 2021. [Page 12]
- A total of 444 crashes involved alcohol in 2021. [Page 13]
- Alcohol-involved fatal crashes were the highest in 2021 during the five-year period from 2017 to 2021 at 25. [Page 13]
- A total of 184 crashes, 22 fatal crashes, and 19 suspected injury crashes involved drugs in 2021, all the highest during the five-year period. [Page 14]
- There were 17,937 drivers wearing seatbelts and 274 drivers not wearing seatbelts in crashes in 2021. Of the 274 drivers not wearing seatbelts, 9 (3.3%) were killed and 124 (45.3%) were injured. [Pages 17-19]
- The most common hazardous action coded for drivers in 2021 in all crashes was unable to stop in assured clear distance (2,446), while the most common hazardous action coded for drivers in fatal crashes was unknown (27). [Page 20]

## 2021 - Crashes and Injury by Month

Month	Crashes				People	
	Total	Fatal	Injury	Property Damage Only (PDO)	Fatalities	Injuries
January	959	3	156	800	3	220
February	994	3	152	839	3	197
March	808	2	185	621	2	260
April	863	6	215	642	6	305
May	1,032	9	217	806	9	304
June	1,096	10	275	811	10	405
July	1,006	10	236	760	10	341
August	976	4	251	721	4	344
September	1,067	7	249	811	8	346
October	1,308	4	226	1,078	4	299
November	1,351	2	232	1,117	2	331
December	1,247	4	190	1,053	5	262
<b>Total</b>	<b>12,707</b>	<b>64</b>	<b>2,584</b>	<b>10,059</b>	<b>66</b>	<b>3,614</b>

## 2021 - Driver Statistics

Age Group	MSP Post 35 - Flint			Driver Rates	
	2019 Population*	Licensed Drivers	Drivers in Crashes	Per 10k Population	Per 10k Licensed
0 - 15	92,052	1,938	35	3.8	180.6
16 - 20	29,054	20,123	2,154	741.4	1,070.4
21 - 24	23,361	20,828	1,833	784.6	880.1
25 - 64	243,576	218,976	12,643	519.1	577.4
65 +	85,892	81,957	2,376	276.6	289.9
Unknown	0	0	2,062	--	--
<b>Total</b>	<b>473,935</b>	<b>343,822</b>	<b>21,103</b>	<b>445.3</b>	<b>613.8</b>

\*2021 Population of Michigan Counties (by single-year of age) not yet available from U.S. Census Bureau.

## 2021 - Vehicles in Crashes

Vehicle Type	Motor Vehicles		Fatal Crashes		Injury Crashes	PDO Crashes
	Number of Vehicles	% of Total	Number	% of Total	Number	Number
Passenger Car, SUV, Van	16,601	78.7	61	61.0	3,701	12,839
Motor Home	29	0.1	0	0.0	8	21
Pickup Truck	3,058	14.5	17	17.0	601	2,440
Small Truck Under 10,000 lbs. GVWR	86	0.4	0	0.0	8	78
Motorcycle	167	0.8	16	16.0	122	29
Moped/Goped	25	0.1	0	0.0	22	3
Go-Cart/Golf Cart	4	0.0	0	0.0	4	0
Snowmobile	1	0.0	0	0.0	1	0
Off-Road Vehicle (ORV)/All-Terrain Vehicle (ATV)	10	0.0	1	1.0	5	4
Other (non-registered farm equipment, construction equipment, snow plows, etc.)	70	0.3	0	0.0	10	60
Truck/Bus (over 10,000 lbs. GVWR/8+ occupants/hazmat placard)	591	2.8	4	4.0	119	468
Uncoded & Errors	461	2.2	1	1.0	66	394
<b>Total</b>	<b>21,103</b>	<b>100.0</b>	<b>100</b>	<b>100.0</b>	<b>4,667</b>	<b>16,336</b>

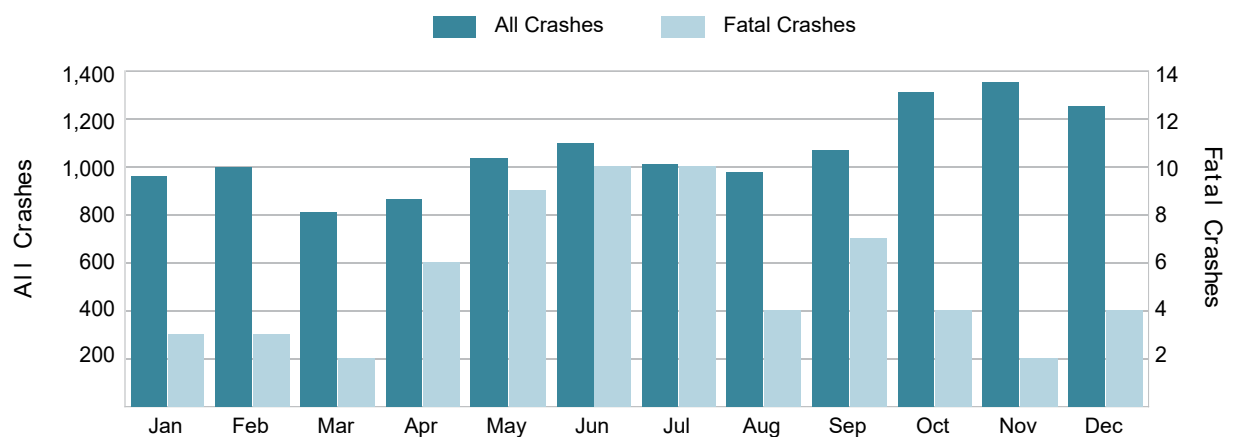
## 5-Year Trend - Crashes by Month

Month	2017		2018		2019		2020		2021	
	Total Crashes	Fatal Crashes	Total Crashes	Fatal Crashes	Total Crashes	Fatal Crashes	Total Crashes	Fatal Crashes	Total Crashes	Fatal Crashes
January	1,107	7	1,388	2	1,357	6	1,128	4	959	3
February	811	2	1,215	3	1,139	6	1,180	4	994	3
March	1,101	4	1,073	5	870	4	571	3	808	2
April	880	1	874	4	822	2	390	1	863	6
May	1,012	3	944	4	981	3	678	3	1,032	9
June	1,020	6	951	5	984	3	950	9	1,096	10
July	847	8	810	3	936	8	965	10	1,006	10
August	892	3	873	7	958	10	888	6	976	4
September	953	3	872	4	951	3	983	4	1,067	7
October	1,293	1	1,231	3	1,340	3	1,192	5	1,308	4
November	1,210	4	1,374	2	1,481	5	1,100	5	1,351	2
December	1,750	2	1,121	5	1,098	4	936	7	1,247	4
<b>Total</b>	<b>12,876</b>	<b>44</b>	<b>12,726</b>	<b>47</b>	<b>12,917</b>	<b>57</b>	<b>10,961</b>	<b>61</b>	<b>12,707</b>	<b>64</b>

## 5-Year Trend - Crashes by Day of Week

Day	2017		2018		2019		2020		2021	
	Total Crashes	Fatal Crashes	Total Crashes	Fatal Crashes	Total Crashes	Fatal Crashes	Total Crashes	Fatal Crashes	Total Crashes	Fatal Crashes
Monday	1,784	8	1,966	8	2,052	4	1,506	8	1,817	8
Tuesday	1,947	7	1,905	6	1,982	6	1,474	6	1,892	7
Wednesday	1,877	5	1,888	7	2,052	8	1,790	14	1,910	6
Thursday	2,002	6	1,887	3	1,947	10	1,786	3	1,911	9
Friday	2,179	7	2,137	5	2,028	13	1,789	6	2,085	11
Saturday	1,743	7	1,666	9	1,525	7	1,463	14	1,674	7
Sunday	1,344	4	1,277	9	1,331	9	1,153	10	1,418	16
<b>Total</b>	<b>12,876</b>	<b>44</b>	<b>12,726</b>	<b>47</b>	<b>12,917</b>	<b>57</b>	<b>10,961</b>	<b>61</b>	<b>12,707</b>	<b>64</b>

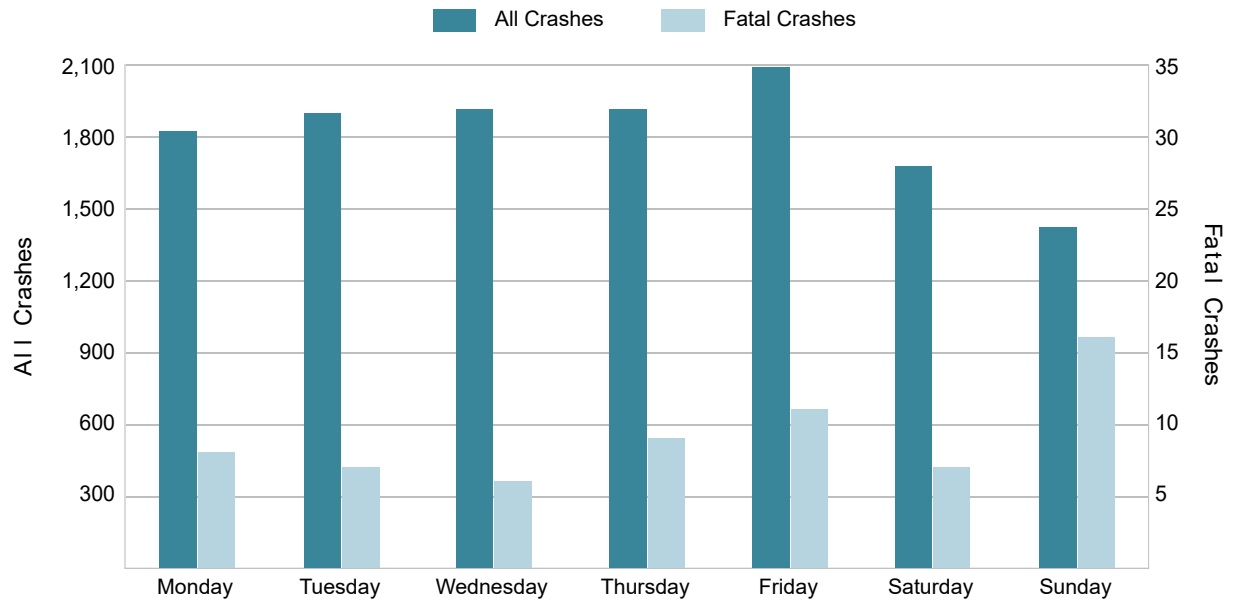
## 2021 Crashes by Month



2021 - Crashes by Day of Week

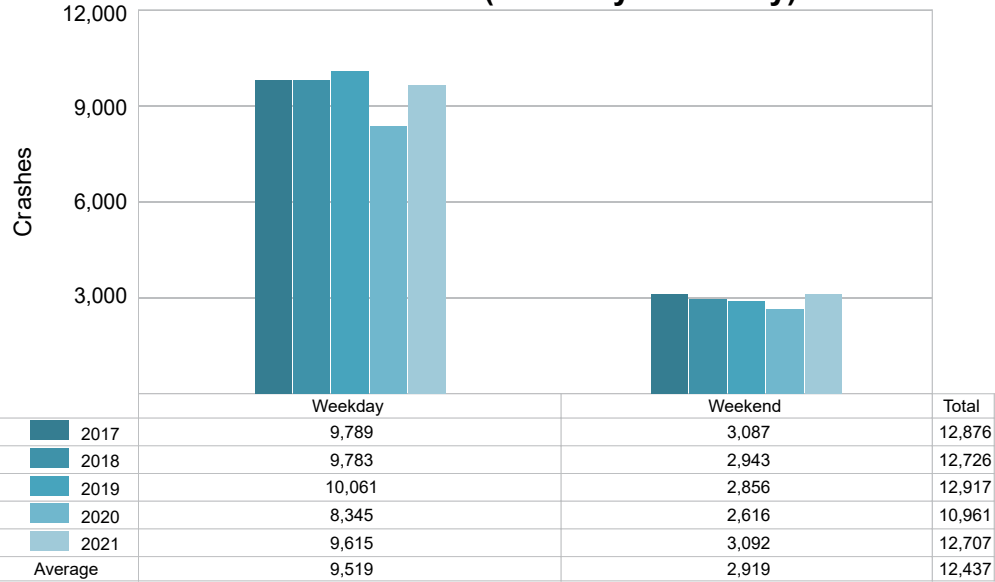
Day	All Crashes		Fatal Crashes		Injury Crashes			PDO Crashes
	Number	% of Total	Fatal	% of Fatal	A	B	C	Number
Monday	1,817	14.3	8	12.5	34	91	239	1,445
Tuesday	1,892	14.9	7	10.9	20	98	258	1,509
Wednesday	1,910	15.0	6	9.4	38	97	217	1,552
Thursday	1,911	15.0	9	14.1	32	108	242	1,520
Friday	2,085	16.4	11	17.2	37	117	269	1,651
Saturday	1,674	13.2	7	10.9	39	106	225	1,297
Sunday	1,418	11.2	16	25.0	36	81	200	1,085
<b>Total</b>	<b>12,707</b>	<b>100.0</b>	<b>64</b>	<b>100.0</b>	<b>236</b>	<b>698</b>	<b>1,650</b>	<b>10,059</b>

2021 Day of Week and Severity



## 5-Year Trend - Crashes by Weekday and Weekend

Portion of Week	2017		2018		2019		2020		2021	
	Total Crashes	Fatal Crashes	Total Crashes	Fatal Crashes	Total Crashes	Fatal Crashes	Total Crashes	Fatal Crashes	Total Crashes	Fatal Crashes
Weekday	9,789	33	9,783	29	10,061	41	8,345	37	9,615	41
Weekend	3,087	11	2,943	18	2,856	16	2,616	24	3,092	23
<b>Total</b>	<b>12,876</b>	<b>44</b>	<b>12,726</b>	<b>47</b>	<b>12,917</b>	<b>57</b>	<b>10,961</b>	<b>61</b>	<b>12,707</b>	<b>64</b>

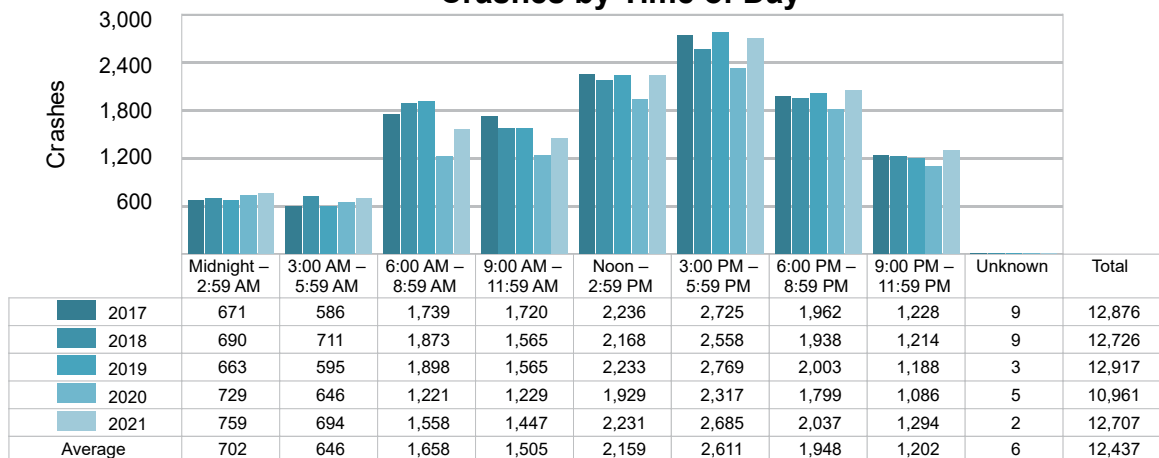
5-Year Crash Trends by Weekday (Monday - Friday)  
and Weekend (Saturday & Sunday)

## 5-Year Trend - Crashes by Time of Day

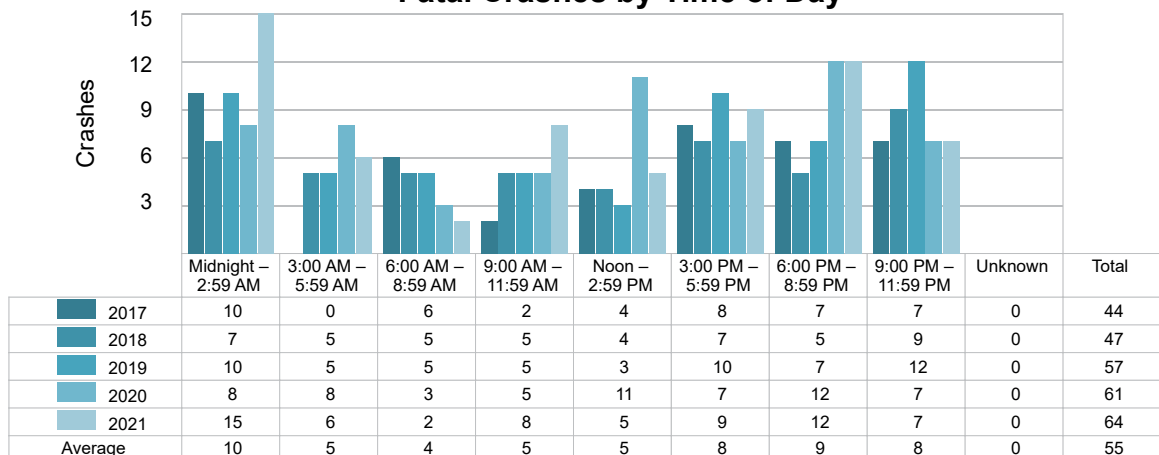
Time of Day	2017		2018		2019		2020		2021	
	Total Crashes	Fatal Crashes	Total Crashes	Fatal Crashes	Total Crashes	Fatal Crashes	Total Crashes	Fatal Crashes	Total Crashes	Fatal Crashes
Midnight – 2:59 AM	671	10	690	7	663	10	729	8	759	15
3:00 AM – 5:59 AM	586	0	711	5	595	5	646	8	694	6
6:00 AM – 8:59 AM	1,739	6	1,873	5	1,898	5	1,221	3	1,558	2
9:00 AM – 11:59 AM	1,720	2	1,565	5	1,565	5	1,229	5	1,447	8
Noon – 2:59 PM	2,236	4	2,168	4	2,233	3	1,929	11	2,231	5
3:00 PM – 5:59 PM	2,725 †	8	2,558 †	7	2,769 †	10	2,317 †	7	2,685 †	9
6:00 PM – 8:59 PM	1,962	7	1,938	5	2,003	7	1,799	12	2,037	12
9:00 PM – 11:59 PM	1,228	7	1,214	9	1,188	12	1,086	7	1,294	7
Unknown	9	0	9	0	3	0	5	0	2	0
<b>Total</b>	<b>12,876</b>	<b>44</b>	<b>12,726</b>	<b>47</b>	<b>12,917</b>	<b>57</b>	<b>10,961</b>	<b>61</b>	<b>12,707</b>	<b>64</b>

Note: † Indicates that the highest number of total crashes reported in the 5-year period occurred in the same time period.

## 5-Year Trend Crashes by Time of Day

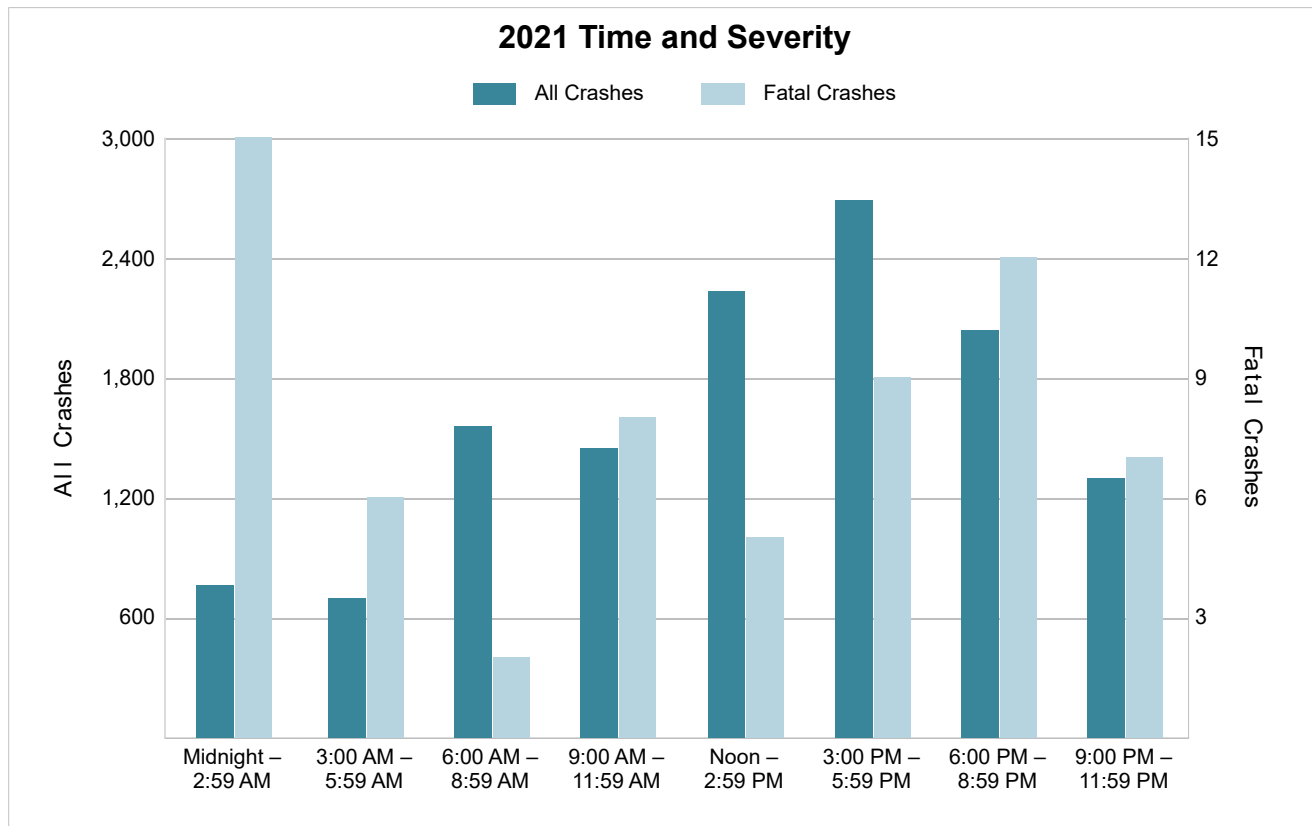


## 5-Year Trend Fatal Crashes by Time of Day



## 2021 - Time and Severity

Time of Day	All Crashes		Fatal Crashes		Injury Crashes			PDO Crashes
	Number	% of Total	Number	% of Fatal	A	B	C	Number
Midnight – 2:59 AM	759	6.0	15	23.4	14	58	108	564
3:00 AM – 5:59 AM	694	5.5	6	9.4	12	32	59	585
6:00 AM – 8:59 AM	1,558	12.3	2	3.1	19	49	150	1,338
9:00 AM – 11:59 AM	1,447	11.4	8	12.5	22	87	218	1,112
Noon – 2:59 PM	2,231	17.6	5	7.8	27	125	362	1,712
3:00 PM – 5:59 PM	2,685	21.1	9	14.1	62	174	379	2,061
6:00 PM – 8:59 PM	2,037	16.0	12	18.8	47	94	236	1,648
9:00 PM – 11:59 PM	1,294	10.2	7	10.9	33	79	138	1,037
Unknown	2	0.0	0	0.0	0	0	0	2
<b>Total</b>	<b>12,707</b>	<b>100.0</b>	<b>64</b>	<b>100.0</b>	<b>236</b>	<b>698</b>	<b>1,650</b>	<b>10,059</b>

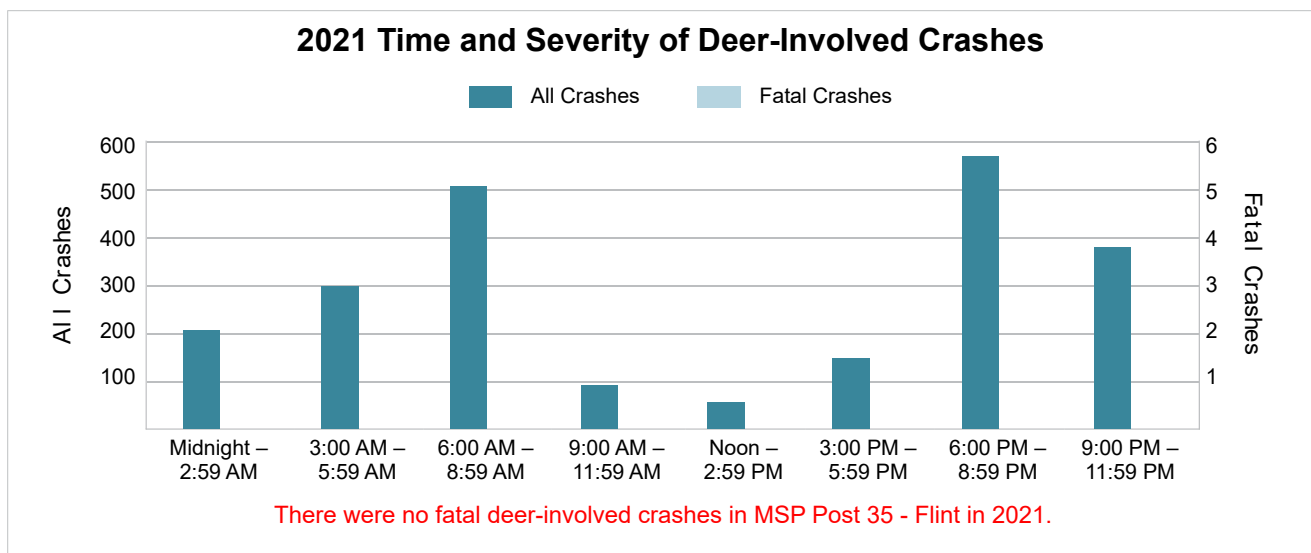
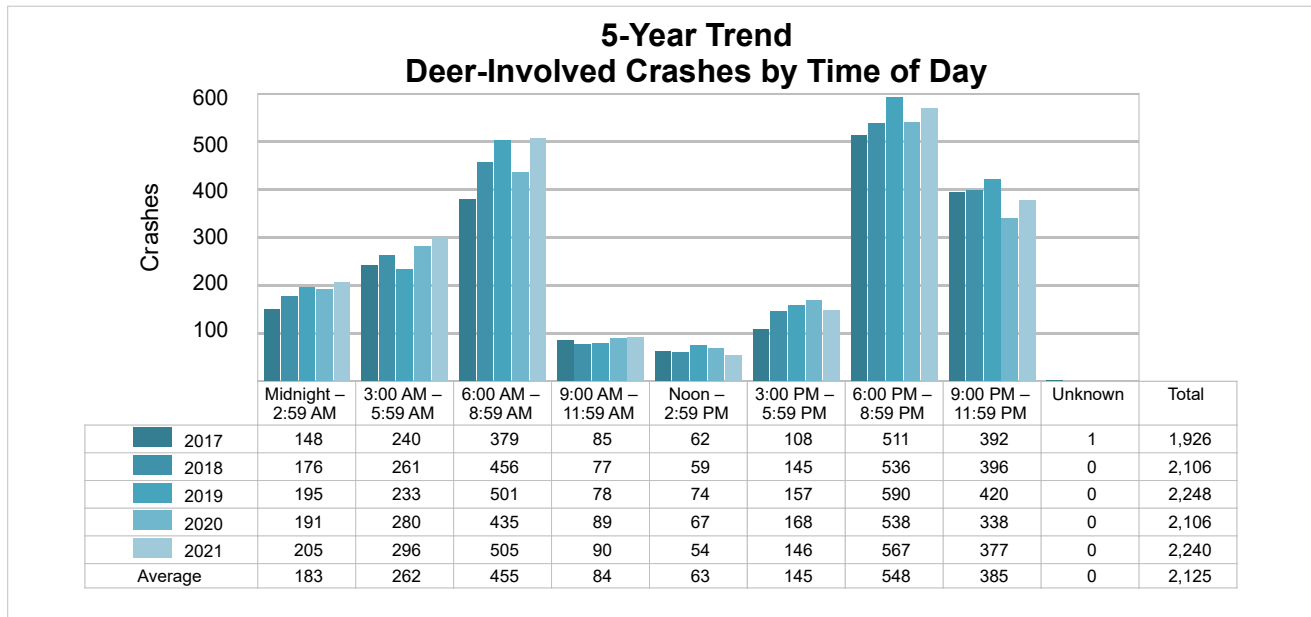




## 5-Year Trend - Deer-Involved Crashes by Time of Day

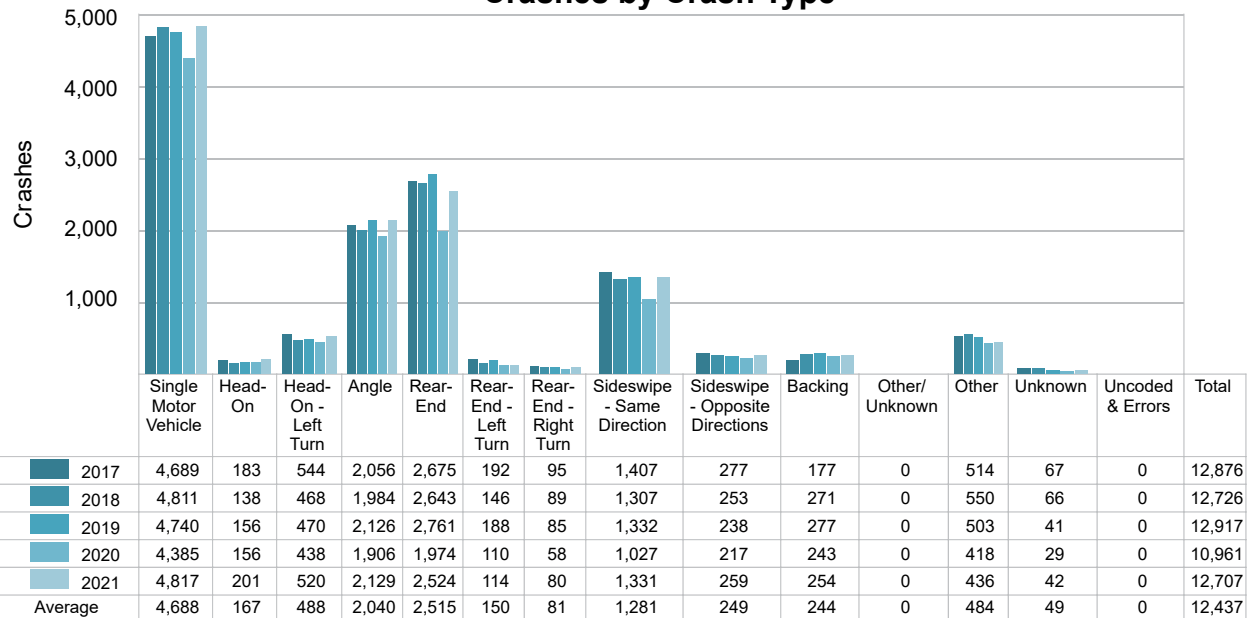
Time of Day	2017		2018		2019		2020		2021	
	Total Crashes	Fatal Crashes	Total Crashes	Fatal Crashes	Total Crashes	Fatal Crashes	Total Crashes	Fatal Crashes	Total Crashes	Fatal Crashes
Midnight – 2:59 AM	148	0	176	0	195	0	191	0	205	0
3:00 AM – 5:59 AM	240	0	261	0	233	0	280	0	296	0
6:00 AM – 8:59 AM	379	0	456	0	501	0	435	0	505	0
9:00 AM – 11:59 AM	85	0	77	0	78	0	89	0	90	0
Noon – 2:59 PM	62	0	59	0	74	0	67	0	54	0
3:00 PM – 5:59 PM	108	0	145	0	157	0	168	0	146	0
6:00 PM – 8:59 PM	511 †	0	536 †	0	590 †	0	538 †	0	567 †	0
9:00 PM – 11:59 PM	392	0	396	0	420	1	338	0	377	0
Unknown	1	0	0	0	0	0	0	0	0	0
<b>Total</b>	<b>1,926</b>	<b>0</b>	<b>2,106</b>	<b>0</b>	<b>2,248</b>	<b>1</b>	<b>2,106</b>	<b>0</b>	<b>2,240</b>	<b>0</b>

Note: † Indicates that the highest number of total crashes reported in the 5-year period occurred in the same time period.



## 5-Year Trend - Crashes by Crash Type

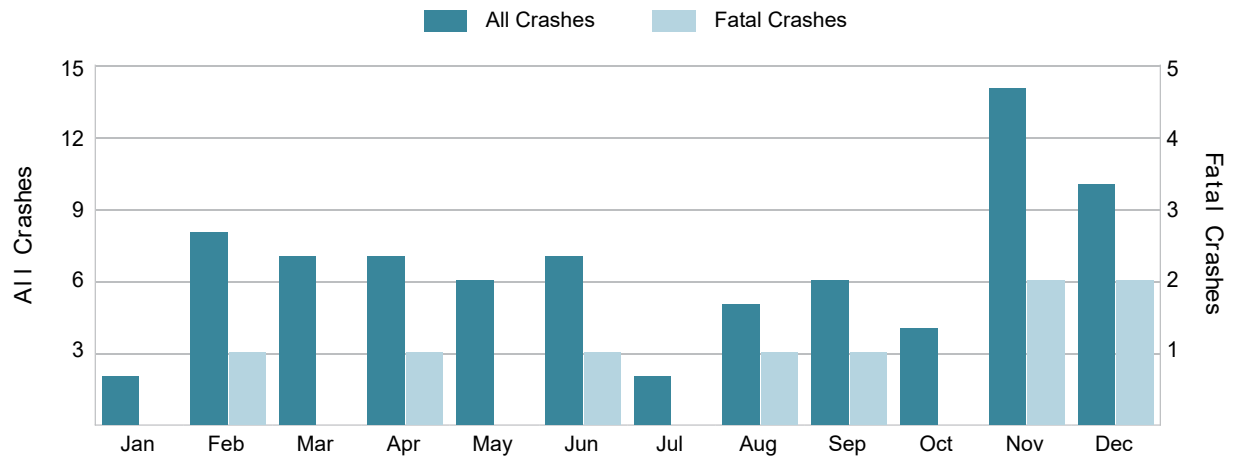
Crash Type	2017		2018		2019		2020		2021	
	Total Crashes	Fatal Crashes	Total Crashes	Fatal Crashes	Total Crashes	Fatal Crashes	Total Crashes	Fatal Crashes	Total Crashes	Fatal Crashes
Single Motor Vehicle	4,689	22	4,811	21	4,740	27	4,385	33	4,817	33
Head-On	183	2	138	2	156	9	156	4	201	3
Head-On - Left Turn	544	3	468	3	470	2	438	2	520	5
Angle	2,056	4	1,984	9	2,126	12	1,906	8	2,129	10
Rear-End	2,675	7	2,643	6	2,761	2	1,974	5	2,524	9
Rear-End - Left Turn	192	0	146	0	188	0	110	0	114	0
Rear-End - Right Turn	95	0	89	0	85	0	58	1	80	0
Sideswipe - Same Direction	1,407	0	1,307	1	1,332	1	1,027	1	1,331	0
Sideswipe - Opposite Directions	277	0	253	1	238	0	217	2	259	0
Backing	177	0	271	0	277	0	243	0	254	0
Other/Unknown	0	0	0	0	0	0	0	0	0	0
Other	514	5	550	4	503	3	418	5	436	4
Unknown	67	1	66	0	41	1	29	0	42	0
Uncoded & Errors	0	0	0	0	0	0	0	0	0	0
<b>Total</b>	<b>12,876</b>	<b>44</b>	<b>12,726</b>	<b>47</b>	<b>12,917</b>	<b>57</b>	<b>10,961</b>	<b>61</b>	<b>12,707</b>	<b>64</b>

5-Year Trend  
Crashes by Crash Type

5-Year Trend - Pedestrian-Involved Crashes by Month

Month	2017		2018		2019		2020		2021	
	Total Crashes	Fatal Crashes	Total Crashes	Fatal Crashes	Total Crashes	Fatal Crashes	Total Crashes	Fatal Crashes	Total Crashes	Fatal Crashes
January	11	1	10	1	9	1	4	0	2	0
February	9	1	8	1	11	2	5	1	8	1
March	6	0	6	2	10	1	1	0	7	0
April	3	0	2	0	2	1	0	0	7	1
May	8	1	8	1	8	0	2	0	6	0
June	6	1	10	1	7	0	8	2	7	1
July	7	0	4	1	10	0	11	0	2	0
August	13	1	6	2	15	3	13	2	5	1
September	11	2	8	1	14	1	6	2	6	1
October	9	1	9	0	10	1	9	3	4	0
November	13	1	7	0	13	2	12	1	14	2
December	16	1	14	3	7	1	6	2	10	2
<b>Total</b>	<b>112</b>	<b>10</b>	<b>92</b>	<b>13</b>	<b>116</b>	<b>13</b>	<b>77</b>	<b>13</b>	<b>78</b>	<b>9</b>

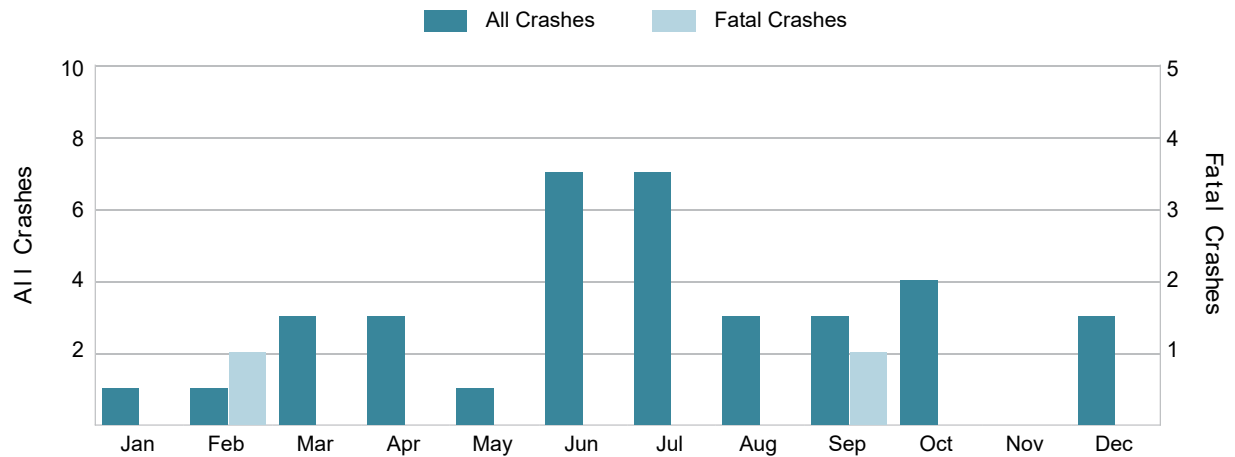
2021 Pedestrian-Involved Crashes by Month



## 5-Year Trend - Bicyclist-Involved Crashes by Month

Month	2017		2018		2019		2020		2021	
	Total Crashes	Fatal Crashes	Total Crashes	Fatal Crashes	Total Crashes	Fatal Crashes	Total Crashes	Fatal Crashes	Total Crashes	Fatal Crashes
January	2	0	1	0	0	0	0	0	1	0
February	2	0	0	0	0	0	1	0	1	1
March	1	1	0	0	1	0	2	0	3	0
April	2	0	0	0	3	0	2	0	3	0
May	1	0	1	0	5	0	3	0	1	0
June	6	0	4	0	4	0	6	1	7	0
July	7	0	6	0	8	0	11	0	7	0
August	10	0	9	0	9	1	8	0	3	0
September	6	0	9	0	3	0	6	0	3	1
October	4	0	3	0	6	0	3	0	4	0
November	3	0	1	0	0	0	2	0	0	0
December	1	0	3	0	0	0	4	1	3	0
<b>Total</b>	<b>45</b>	<b>1</b>	<b>37</b>	<b>0</b>	<b>39</b>	<b>1</b>	<b>48</b>	<b>2</b>	<b>36</b>	<b>2</b>

## 2021 Bicyclist-Involved Crashes by Month



## 2021 - Reported Motor Vehicle Crashes by County

County	Crashes												
	Total	Fatal	Injury	Property Damage	Inter-State	US Route	State Route	Local Street	Alcohol-Involved	Drug-Involved	Deer-Involved	Pedestrian-Involved	Bicyclist-Involved
Genesee	10,601	59	2,301	8,241	1,188	410	1,505	7,477	365	156	1,254	65	27
Shiawassee	2,106	5	283	1,818	234	0	681	1,190	79	28	986	13	9
Total	12,707	64	2,584	10,059	1,422	410	2,186	8,667	444	184	2,240	78	36

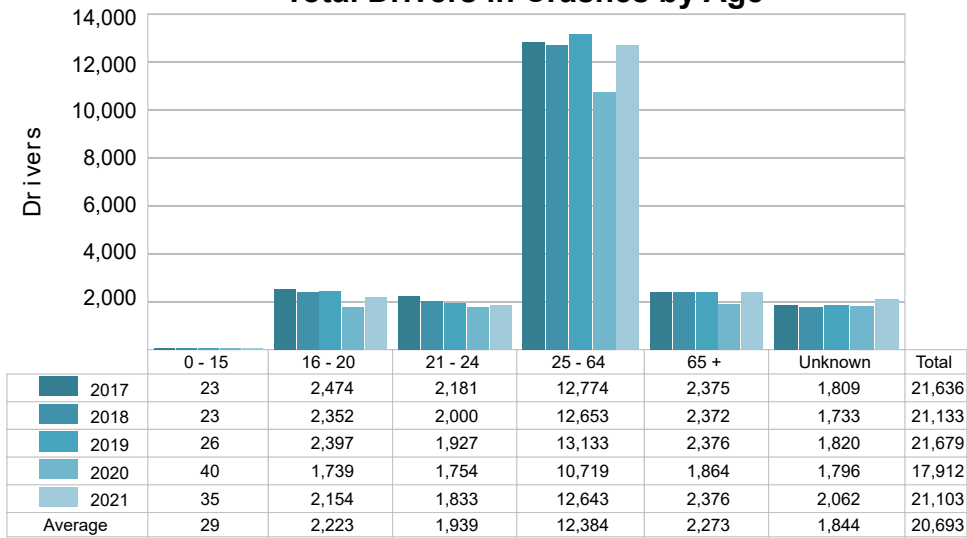
## 2021 - People in Reported Motor Vehicle Crashes by County

County	People					
	Fatalities	Suspected Serious Injuries	Suspected Minor Injuries	Possible Injuries	No Injuries	Uncoded & Errors
Genesee	60	465	1,520	3,810	16,908	1,997
Shiawassee	6	111	201	347	2,878	111
<b>Total</b>	<b>66</b>	<b>576</b>	<b>1,721</b>	<b>4,157</b>	<b>19,786</b>	<b>2,108</b>

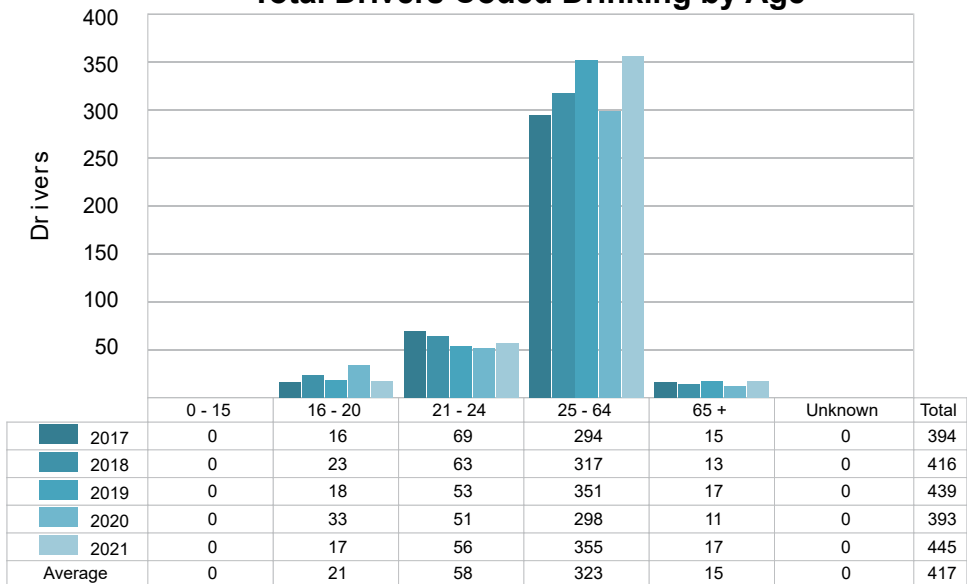
## 5-Year Trend - Drivers in Crashes Coded Drinking by Driver Age

Driver Age	2017		2018		2019		2020		2021	
	Total Drivers in Crashes	Total Drivers Coded Drinking	Total Drivers in Crashes	Total Drivers Coded Drinking	Total Drivers in Crashes	Total Drivers Coded Drinking	Total Drivers in Crashes	Total Drivers Coded Drinking	Total Drivers in Crashes	Total Drivers Coded Drinking
0 - 15	23	0	23	0	26	0	40	0	35	0
16 - 20	2,474	16	2,352	23	2,397	18	1,739	33	2,154	17
21 - 24	2,181	69	2,000	63	1,927	53	1,754	51	1,833	56
25 - 64	12,774	294	12,653	317	13,133	351	10,719	298	12,643	355
65 +	2,375	15	2,372	13	2,376	17	1,864	11	2,376	17
Unknown	1,809	0	1,733	0	1,820	0	1,796	0	2,062	0
<b>Total</b>	<b>21,636</b>	<b>394</b>	<b>21,133</b>	<b>416</b>	<b>21,679</b>	<b>439</b>	<b>17,912</b>	<b>393</b>	<b>21,103</b>	<b>445</b>

**5-Year Trend  
Total Drivers in Crashes by Age**



**5-Year Trend  
Total Drivers Coded Drinking by Age**



### 2021 - Bodily Alcohol Concentration (BAC) Results Among All Vehicle Drivers in Alcohol-Involved Crashes by Age

Age Group	Drivers				BAC Result Range for Drivers Coded Drinking				
	Total Drivers in Alcohol-Involved Crashes	Total Drivers Tested in all Crashes	Total Drivers Coded Drinking, Tested	Total Drivers Coded Drinking	BAC = 0.00	BAC 0.01 g/dL to 0.07 g/dL	BAC 0.08 g/dL to 0.16 g/dL	BAC 0.17 g/dL and Above	BAC Not Reported
0 - 15	0	2	0	0	0	0	0	0	0
16 - 20	35	29	16	17	0	2	5	4	6
21 - 24	73	65	46	56	0	5	6	15	30
25 - 64	467	380	271	355	0	20	60	90	185
65 +	31	22	15	17	0	1	5	5	6
Unknown	27	1	0	0	0	0	0	0	0
<b>Total</b>	<b>633</b>	<b>499</b>	<b>348</b>	<b>445</b>	<b>0</b>	<b>28</b>	<b>76</b>	<b>114</b>	<b>227</b>

Notes: BAC measured in grams (g) per deciliter (dL).

BAC may not be reported if drivers are not tested or if the results are not available immediately (as in the case of a blood test).

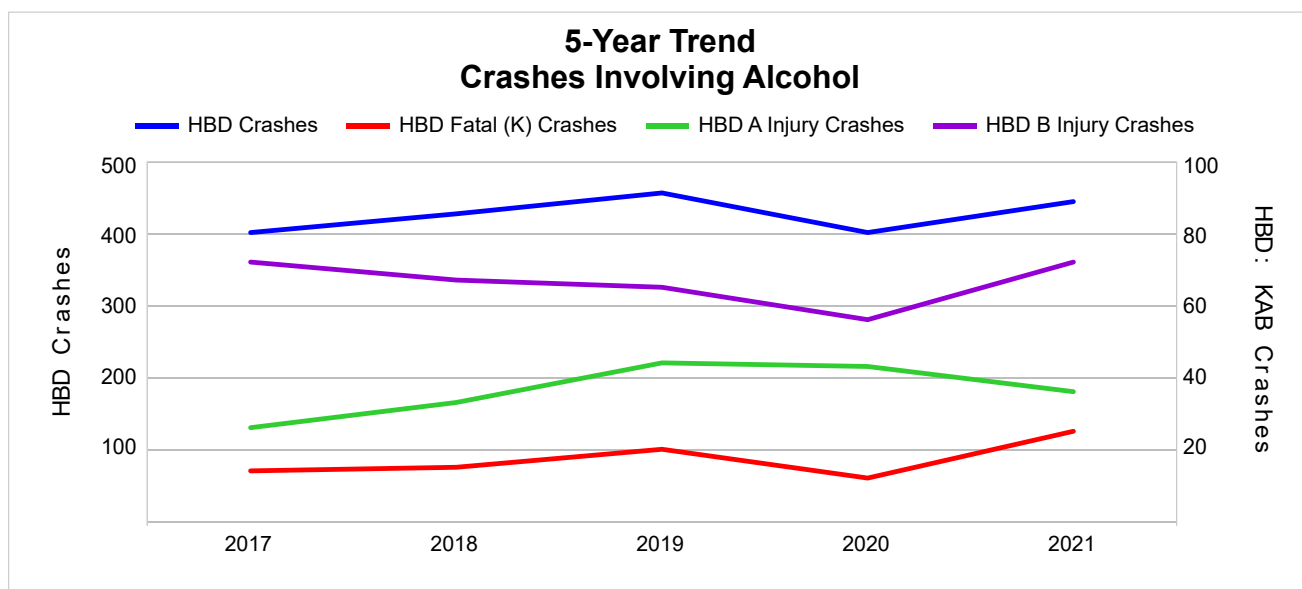
A driver may be coded by the officer as drinking even though no test is administered.

### 5-Year Trend - Crashes Involving Alcohol

Year	All Crashes	HBD Crashes	% HBD	Fatal Crashes	HBD Fatal Crashes	% HBD	A Injury Crashes	HBD A Injury Crashes	% HBD	B Injury Crashes	HBD B Injury Crashes	% HBD
2017	12,876	401	3.1	44	14	31.8	197	26	13.2	641	72	11.2
2018	12,726	427	3.4	47	15	31.9	171	33	19.3	607	67	11.0
2019	12,917	456	3.5	57	20	35.1	228	44	19.3	599	65	10.9
2020	10,961	401	3.7	61	12	19.7	221	43	19.5	569	56	9.8
2021	12,707	444	3.5	64 **	25 **	39.1 **	236 **	36	15.3	698 **	72	10.3

Note: \* Indicates that the most recent year is the lowest number or percentage reported in the 5-year period in that column.

\*\* Indicates that the most recent year is the highest number or percentage reported in the 5-year period in that column.



Note: Had-Been-Drinking (HBD)

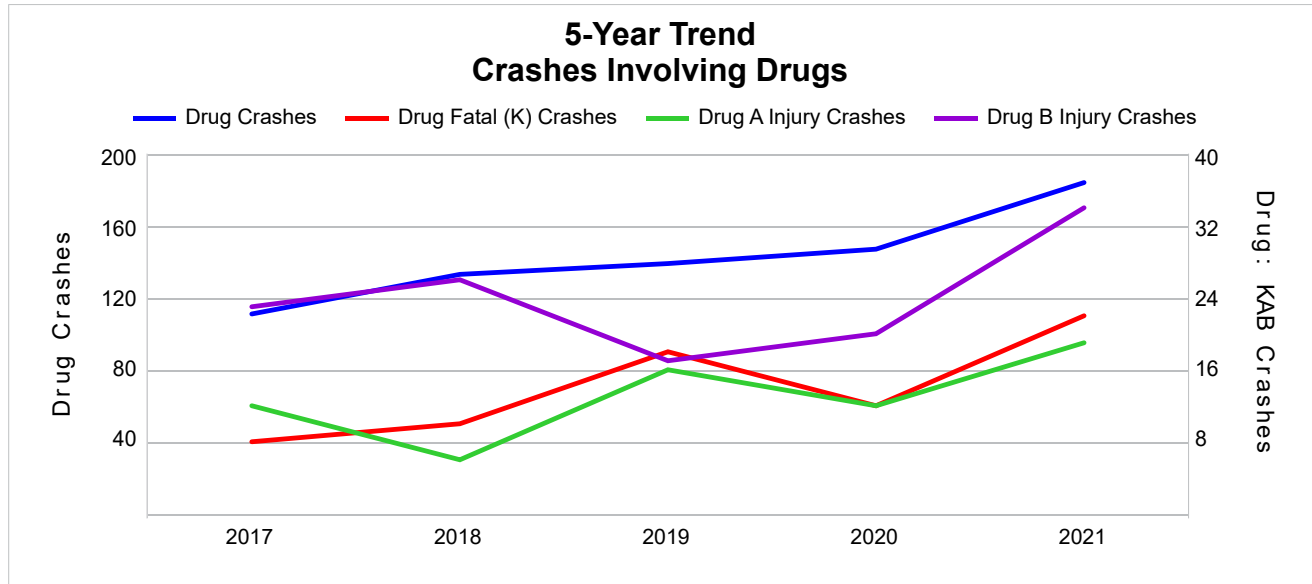


## 5-Year Trend - Crashes Involving Drugs

Year	All Crashes	Drug Crashes	% Drug	Fatal Crashes	Drug Fatal Crashes	% Drug	A Injury Crashes	Drug A Injury Crashes	% Drug	B Injury Crashes	Drug B Injury Crashes	% Drug
2017	12,876	111	0.9	44	8	18.2	197	12	6.1	641	23	3.6
2018	12,726	133	1.0	47	10	21.3	171	6	3.5	607	26	4.3
2019	12,917	139	1.1	57	18	31.6	228	16	7.0	599	17	2.8
2020	10,961	147	1.3	61	12	19.7	221	12	5.4	569	20	3.5
2021	12,707	184 **	1.4 **	64 **	22 **	34.4 **	236 **	19 **	8.1 **	698 **	34 **	4.9 **

Note: \* Indicates that the most recent year is the lowest number or percentage reported in the 5-year period in that column.

\*\* Indicates that the most recent year is the highest number or percentage reported in the 5-year period in that column.

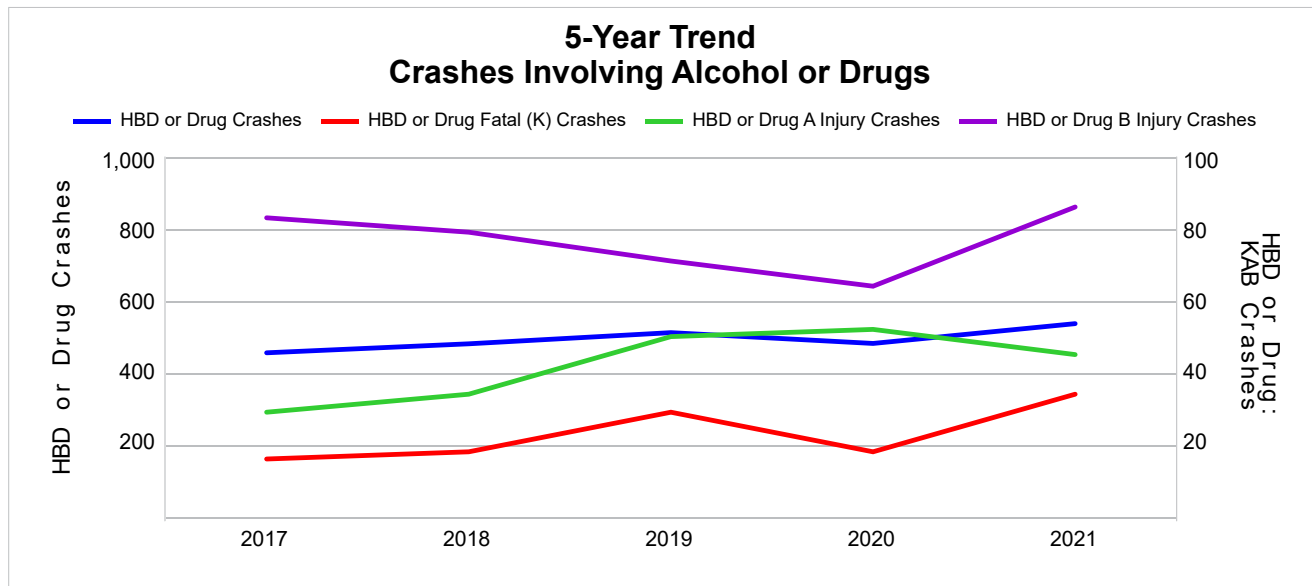


## 5-Year Trend - Crashes Involving Alcohol or Drugs

Year	All Crashes	HBD or Drug Crashes	% HBD or Drug	Fatal Crashes	HBD or Drug Fatal Crashes	% HBD or Drug	A Injury Crashes	HBD or Drug A Injury Crashes	% HBD or Drug	B Injury Crashes	HBD or Drug B Injury Crashes	% HBD or Drug
2017	12,876	455	3.5	44	16	36.4	197	29	14.7	641	83	12.9
2018	12,726	480	3.8	47	18	38.3	171	34	19.9	607	79	13.0
2019	12,917	511	4.0	57	29	50.9	228	50	21.9	599	71	11.9
2020	10,961	481	4.4	61	18	29.5	221	52	23.5	569	64	11.2
2021	12,707	536 **	4.2	64 **	34 **	53.1 **	236 **	45	19.1	698 **	86 **	12.3

Note: \* Indicates that the most recent year is the lowest number or percentage reported in the 5-year period in that column.

\*\* Indicates that the most recent year is the highest number or percentage reported in the 5-year period in that column.



Note: Had-Been-Drinking (HBD)

2021 - Restraints Worn Among Vehicle Drivers and Injured Passengers by Vehicle Type

Vehicle Type	Total Occupants			Fatalities			A - Suspected Serious			B - Suspected Minor			C - Possible Injury			No Injury		
	Total	Used Restraint	%	Total	Used Restraint	%	Total	Used Restraint	%	Total	Used Restraint	%	Total	Used Restraint	%	Total	Used Restraint	%
Passenger Car, SUV, Van	17,351	15,186	87.5	31	11	35.5	183	122	66.7	652	552	84.7	2,111	1,949	92.3	13,042	12,552	96.2
Motor Home	30	26	86.7	0	0	0.0	0	0	0.0	2	2	100.0	2	2	100.0	23	22	95.7
Pickup Truck	3,151	2,784	88.4	7	2	28.6	19	10	52.6	94	79	84.0	243	227	93.4	2,536	2,466	97.2
Small Truck Under 10,000 lbs. GVWR	87	74	85.1	0	0	0.0	0	0	0.0	1	1	100.0	4	4	100.0	70	69	98.6
Motorcycle	182	96	52.7	15	3	20.0	50	25	50.0	55	36	65.5	25	11	44.0	34	21	61.8
Moped/Goped	28	7	25.0	0	0	0.0	6	3	50.0	7	0	0.0	12	3	25.0	2	1	50.0
Go-Cart/Golf Cart	7	3	42.9	0	0	0.0	0	0	0.0	4	1	25.0	2	2	100.0	1	0	0.0
Snowmobile	1	0	0.0	0	0	0.0	1	0	0.0	0	0	0.0	0	0	0.0	0	0	0.0
Off-Road Vehicle (ORV)/All-Terrain Vehicle (ATV)	10	2	20.0	1	0	0.0	1	0	0.0	4	0	0.0	0	0	0.0	4	2	50.0
Other (non-registered farm equipment, construction equipment, snow plows, etc.)	70	38	54.3	0	0	0.0	0	0	0.0	1	0	0.0	4	2	50.0	50	36	72.0
Truck/Bus (over 10,000 lbs. GVWR/ 8+ occupants/ hazmat placard)	608	555	91.3	1	1	100.0	0	0	0.0	10	7	70.0	27	16	59.3	544	531	97.6
Uncoded & Errors	461	0	0.0	0	0	0.0	0	0	0.0	0	0	0.0	0	0	0.0	0	0	0.0
Total	21,986	18,771	85.4	55	17	30.9	260	160	61.5	830	678	81.7	2,430	2,216	91.2	16,306	15,700	96.3

Note: Restraint Use includes shoulder belt only used, lap belt only used, both lap and shoulder belts used, child restraint used, restraint failure, and helmet worn.

2021 - Restraints Worn Among Vehicle Drivers and Injured Passengers by Age

Age Group	Total Occupants			Fatalities			A - Suspected Serious			B - Suspected Minor			C - Possible Injury			No Injury		
	Total	Used Restraint	%	Total	Used Restraint	%	Total	Used Restraint	%	Total	Used Restraint	%	Total	Used Restraint	%	Total	Used Restraint	%
0 - 15	263	237	90.1	1	1	100.0	11	7	63.6	52	43	82.7	173	163	94.2	26	23	88.5
16 - 20	2,282	2,147	94.1	5	2	40.0	22	14	63.6	111	90	81.1	281	252	89.7	1,860	1,789	96.2
21 - 24	1,922	1,770	92.1	5	0	0.0	29	17	58.6	102	74	72.5	246	210	85.4	1,533	1,469	95.8
25 - 64	12,992	12,251	94.3	42	13	31.0	166	97	58.4	462	378	81.8	1,435	1,311	91.4	10,850	10,452	96.3
65 +	2,465	2,366	96.0	2	1	50.0	32	25	78.1	102	93	91.2	295	280	94.9	2,031	1,967	96.8
Unknown	2,062	0	0.0	0	0	0.0	0	0	0.0	1	0	0.0	0	0	0.0	6	0	0.0
Total	21,986	18,771	85.4	55	17	30.9	260	160	61.5	830	678	81.7	2,430	2,216	91.2	16,306	15,700	96.3

Note: Restraint Use includes shoulder belt only used, lap belt only used, both lap and shoulder belts used, child restraint used, restraint failure, and helmet worn.

## 5-Year Trend - Restraint Use Among Drivers

Restraint Use	2017			2018			2019			2020			2021		
	Drivers	Fatal Drivers	Injured Drivers	Drivers	Fatal Drivers	Injured Drivers	Drivers	Fatal Drivers	Injured Drivers	Drivers	Fatal Drivers	Injured Drivers	Drivers	Fatal Drivers	Injured Drivers
No Belts Available	43	0	11	33	0	8	28	0	6	42	1	9	54	0	11
Shoulder Belt Only Used	119	0	22	92	0	10	113	0	23	76	0	5	130	0	19
Lap Belt Only Used	50	0	3	56	0	14	59	0	9	34	0	4	60	0	7
Both Lap & Shoulder Belt Used	18,880	11	2,527	18,468	9	2,328	18,797	17	2,313	15,021	12	1,906	17,747	11	2,224
No Belts Used	134	8	63	161	10	84	161	10	70	177	7	87	220	9	113
Child Restraint Used - Forward Facing	0	0	0	1	0	0	0	0	0	0	0	0	0	0	0
Child Restraint Not Used, Unavailable or Improper Use	0	0	0	0	0	0	0	0	0	0	0	0	0	0	0
Child Restraint Used - Rear Facing	0	0	0	0	0	0	0	0	0	0	0	0	0	0	0
Child Restraint Used - Booster Seat	4	0	0	0	0	0	0	0	0	0	0	0	0	0	0
Restraint Failure	8	0	2	3	0	0	6	0	2	5	0	1	0	0	0
Restraint Use Unknown	2,226	2	88	2,163	5	84	2,357	6	111	2,321	7	110	2,688	10	131
Helmet Worn	82	1	58	73	2	59	79	1	62	108	6	81	96	3	69
Helmet Not Worn	45	3	37	50	1	38	65	4	48	102	5	76	89	9	68
Helmet Use Unknown	7	0	4	6	0	4	9	0	5	15	1	10	11	3	5
Uncoded & Errors	38	0	0	27	0	0	5	0	0	11	0	0	8	0	0
<b>Total</b>	<b>21,636</b>	<b>25</b>	<b>2,815</b>	<b>21,133</b>	<b>27</b>	<b>2,629</b>	<b>21,679</b>	<b>38</b>	<b>2,649</b>	<b>17,912</b>	<b>39</b>	<b>2,289</b>	<b>21,103</b>	<b>45</b>	<b>2,647</b>

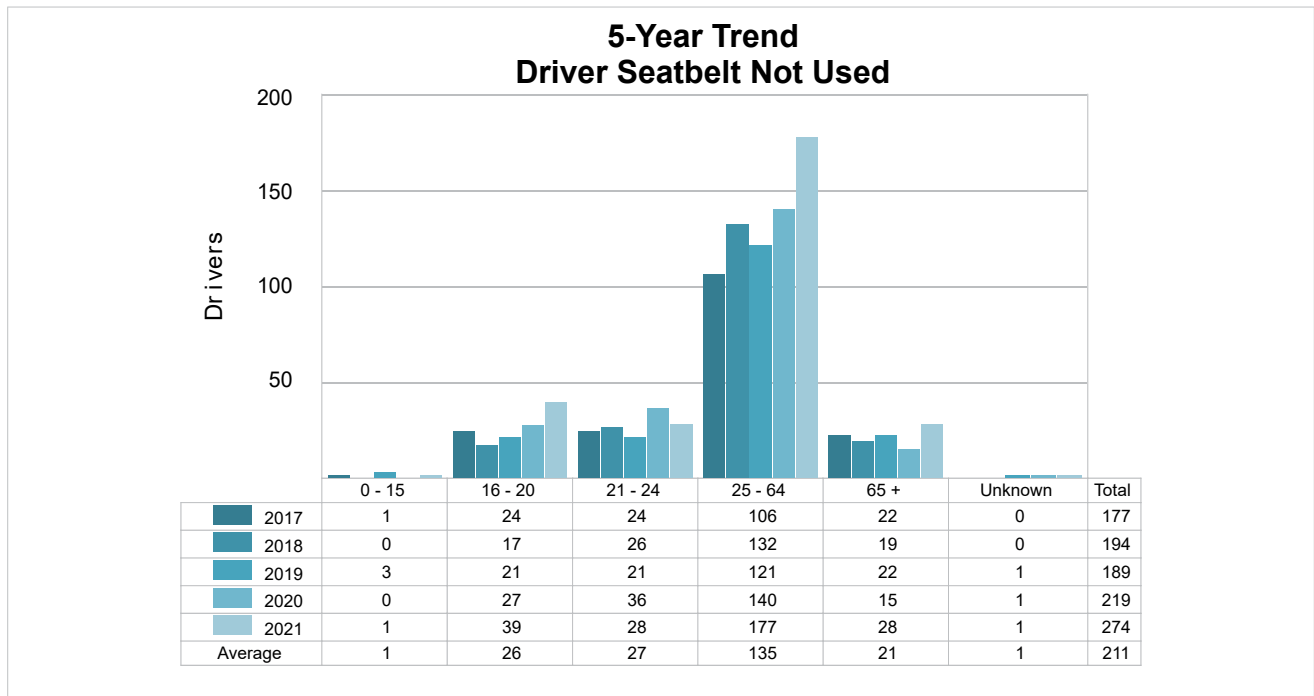
## 5-Year Trend - Restraint Use Among Drivers Coded Drinking

Restraint Use	2017			2018			2019			2020			2021		
	Drivers	Fatal Drivers	Injured Drivers	Drivers	Fatal Drivers	Injured Drivers	Drivers	Fatal Drivers	Injured Drivers	Drivers	Fatal Drivers	Injured Drivers	Drivers	Fatal Drivers	Injured Drivers
No Belts Available	1	0	1	4	0	1	1	0	0	3	0	1	3	0	3
Shoulder Belt Only Used	2	0	1	1	0	0	3	0	2	3	0	0	4	0	0
Lap Belt Only Used	1	0	1	0	0	0	0	0	0	2	0	0	2	0	2
Both Lap & Shoulder Belt Used	283	2	93	295	0	87	315	2	97	256	0	87	307	3	105
No Belts Used	26	3	14	45	5	31	38	6	22	38	2	25	39	2	21
Child Restraint Used - Forward Facing	0	0	0	0	0	0	0	0	0	0	0	0	0	0	0
Child Restraint Not Used, Unavailable or Improper Use	0	0	0	0	0	0	0	0	0	0	0	0	0	0	0
Child Restraint Used - Rear Facing	0	0	0	0	0	0	0	0	0	0	0	0	0	0	0
Child Restraint Used - Booster Seat	0	0	0	0	0	0	0	0	0	0	0	0	0	0	0
Restraint Failure	0	0	0	0	0	0	1	0	1	1	0	1	0	0	0
Restraint Use Unknown	70	0	17	61	2	21	72	2	20	69	0	26	68	5	21
Helmet Worn	1	0	1	4	0	3	0	0	0	6	1	4	5	0	3
Helmet Not Worn	9	3	6	6	0	3	9	2	6	15	3	11	16	3	12
Helmet Use Unknown	0	0	0	0	0	0	0	0	0	0	0	0	1	1	0
Uncoded & Errors	1	0	0	0	0	0	0	0	0	0	0	0	0	0	0
<b>Total</b>	<b>394</b>	<b>8</b>	<b>134</b>	<b>416</b>	<b>7</b>	<b>146</b>	<b>439</b>	<b>12</b>	<b>148</b>	<b>393</b>	<b>6</b>	<b>155</b>	<b>445</b>	<b>14</b>	<b>167</b>

## 5-Year Trend - Seatbelt Not Used Among Drivers by Age

Age Group	2017			2018			2019			2020			2021		
	Drivers	Fatal Drivers	Injured Drivers	Drivers	Fatal Drivers	Injured Drivers	Drivers	Fatal Drivers	Injured Drivers	Drivers	Fatal Drivers	Injured Drivers	Drivers	Fatal Drivers	Injured Drivers
0 - 15	1	0	0	0	0	0	3	0	1	0	0	0	1	0	0
16 - 20	24	0	14	17	1	8	21	0	12	27	1	15	39	2	15
21 - 24	24	1	16	26	1	18	21	1	13	36	2	18	28	2	15
25 - 64	106	6	37	132	6	59	121	9	41	140	3	53	177	4	80
65 +	22	1	7	19	2	7	22	0	9	15	2	10	28	1	14
Unknown	0	0	0	0	0	0	1	0	0	1	0	0	1	0	0
<b>Total</b>	<b>177</b>	<b>8</b>	<b>74</b>	<b>194</b>	<b>10</b>	<b>92</b>	<b>189</b>	<b>10</b>	<b>76</b>	<b>219</b>	<b>8</b>	<b>96</b>	<b>274</b>	<b>9</b>	<b>124</b>

Note: Seatbelt Not Used includes no belts available or no belts used.

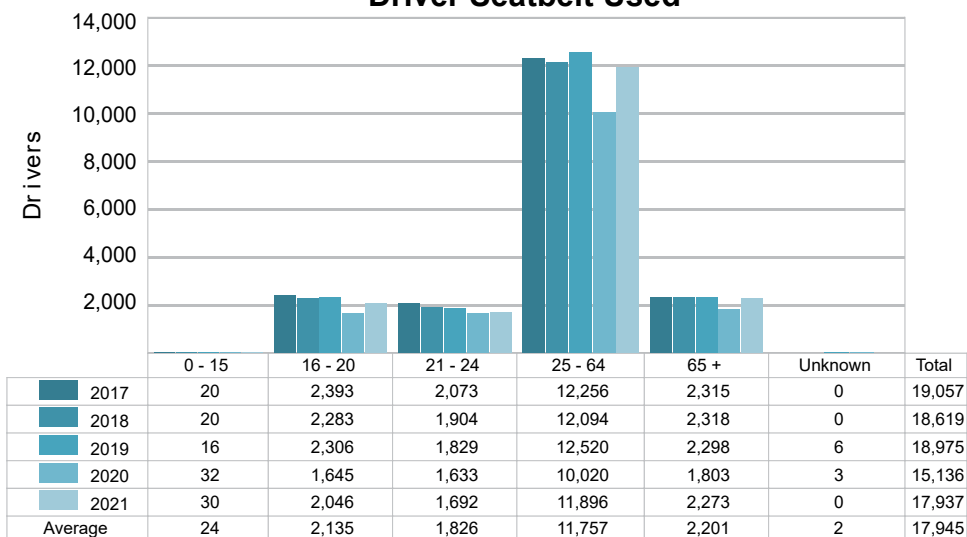


## 5-Year Trend - Seatbelt Used Among Drivers by Age

Age Group	2017			2018			2019			2020			2021		
	Drivers	Fatal Drivers	Injured Drivers	Drivers	Fatal Drivers	Injured Drivers	Drivers	Fatal Drivers	Injured Drivers	Drivers	Fatal Drivers	Injured Drivers	Drivers	Fatal Drivers	Injured Drivers
0 - 15	20	0	1	20	0	3	16	0	3	32	0	3	30	0	8
16 - 20	2,393	1	287	2,283	0	263	2,306	1	298	1,645	1	199	2,046	1	256
21 - 24	2,073	1	325	1,904	0	237	1,829	0	216	1,633	0	219	1,692	0	226
25 - 64	12,256	6	1,609	12,094	6	1,522	12,520	10	1,502	10,020	5	1,233	11,896	9	1,454
65 +	2,315	3	332	2,318	3	327	2,298	6	326	1,803	6	262	2,273	1	306
Unknown	0	0	0	0	0	0	6	0	2	3	0	0	0	0	0
<b>Total</b>	<b>19,057</b>	<b>11</b>	<b>2,554</b>	<b>18,619</b>	<b>9</b>	<b>2,352</b>	<b>18,975</b>	<b>17</b>	<b>2,347</b>	<b>15,136</b>	<b>12</b>	<b>1,916</b>	<b>17,937</b>	<b>11</b>	<b>2,250</b>

Note: Seatbelt Used includes shoulder belt only used, lap belt only used, both lap and shoulder belts used, and restraint failure.

### 5-Year Trend Driver Seatbelt Used



## 5-Year Trend - Drivers in Crashes by Hazardous Action

Hazardous Action	2017		2018		2019		2020		2021	
	Total Drivers in Crashes	Drivers in Fatal Crashes	Total Drivers in Crashes	Drivers in Fatal Crashes	Total Drivers in Crashes	Drivers in Fatal Crashes	Total Drivers in Crashes	Drivers in Fatal Crashes	Total Drivers in Crashes	Drivers in Fatal Crashes
None	10,951	26	10,722	43	11,197	41	9,209	35	10,728	32
Speed Too Fast	1,492	7	1,704	5	1,360	8	1,083	20	1,330	17
Speed Too Slow	17	0	8	0	11	0	14	0	11	0
Failed to Yield	2,211	6	2,015	5	2,086	5	1,818	4	2,166	6
Disregard Traffic Control	558	2	579	7	574	4	600	1	720	2
Drove Wrong Way	14	0	22	0	14	0	13	1	19	1
Drove Left of Center	136	1	138	1	121	4	123	2	188	1
Improper Passing	112	1	100	0	136	1	117	0	137	0
Improper Lane Use	525	1	531	0	556	0	400	1	559	0
Improper Turn	238	1	216	0	255	1	214	0	207	0
Improper/No Signal	24	0	16	0	17	0	13	0	6	0
Improper Backing	249	0	308	0	298	0	232	0	236	0
Unable to Stop in Assured Clear Distance	2,644	1	2,578	5	2,746	2	1,901	3	2,446	5
Other	695	3	718	4	705	3	710	6	667	2
Unknown	1,014	6	841	11	903	15	779	16	899	27
Reckless Driving	137	4	135	3	157	5	144	5	192	3
Careless/Negligent Driving	575	4	474	4	538	4	531	2	584	4
Uncoded & Errors	44	0	28	0	5	0	11	0	8	0
<b>Total</b>	<b>21,636</b>	<b>63</b>	<b>21,133</b>	<b>88</b>	<b>21,679</b>	<b>93</b>	<b>17,912</b>	<b>96</b>	<b>21,103</b>	<b>100</b>

### Office of Highway Safety Planning

---

Physical Address:  
7150 Harris Drive  
Dimondale, Michigan 48821

Mailing Address:  
P.O. Box 30634  
Lansing, Michigan 48909

Find us on the web:  
[MichiganTrafficCrashFacts.org](http://MichiganTrafficCrashFacts.org)  
[mtcf-info@umich.edu](mailto:mtcf-info@umich.edu)

