



2021

MTCF
Michigan Traffic
Crash Facts

Michigan Traffic Crash Facts

Reporting Criteria

Please pay particular attention to the wording when interpreting the three levels of data gathered for this report.

Crash

The Crash Level analyzes data related to crash events and returns one result per crash.

Examples: Time, weather, and location.

Units

The Units Level analyzes the experience of the units in the crash and returns one result per vehicle, driver, pedestrian, bicyclist, or train.

Examples: Vehicle type, driver condition, and unit events.

People

The People Level analyzes the experience of the people involved in the crash and returns one result per occupant/person/party.

Examples: Age, injury severity, and seat belt or helmet use.

KABCO Injury Indicator:

K = Killed

A = Suspected Serious Injury

B = Suspected Minor Injury

C = Possible Injury

O = No Injury

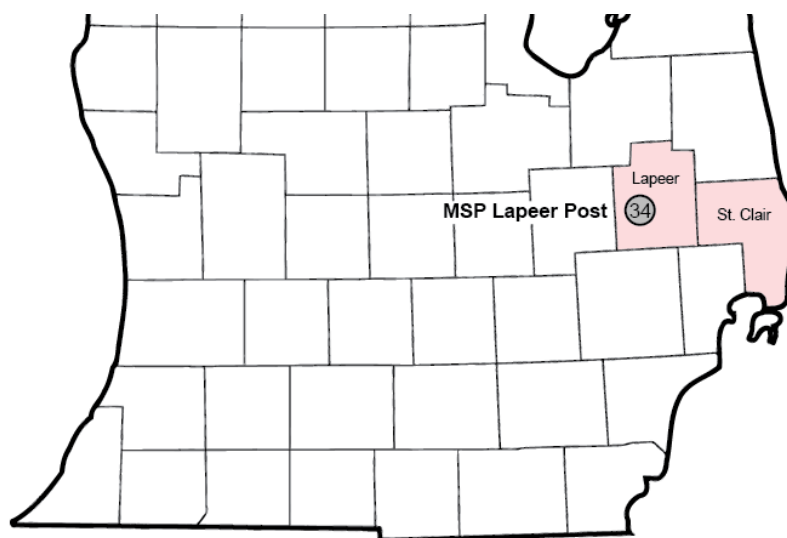
Property Damage Only (PDO)



Michigan State Police (MSP) Post 34 - Lapeer

2021 Traffic Crash Data & 2017-2021 5-Year Trends

MSP Post 34 - Lapeer is comprised of Lapeer and St. Clair counties. Trend tables for this report are based on those counties.



Sources:

The crashes in this report occurred on public roadways in Michigan and resulted in injuries, fatalities, or property damage (with \$1,000 as a reporting threshold). The information was gathered from Michigan Traffic Crash Report Forms (UD-10) submitted by local police departments, sheriff's offices, and the Michigan State Police. Other related information was obtained from the departments of Transportation, State, and Community Health.

MSP Post 34 - Lapeer

- There were 6,467 crashes in Post 34 during 2021. [Page 1]
- A total of 35 fatalities resulted from 33 fatal crashes in 2021 in Post 34. [Page 1]
- There were 1,426 injuries and 1,038 injury crashes. [Page 1]
- There were 5,396 property damage only crashes (no fatalities or injuries). [Page 1]
- November had the highest number of crashes (793). [Pages 1-2]
- April had the highest number of fatal crashes (7) while April and July had the highest number of fatalities (7). [Pages 1-2]
- September had the highest number of injury crashes (123) and injuries (176). [Page 1]
- November had the highest number of property damage only crashes (715). [Page 1]
- Of all vehicles involved in fatal crashes, 8 (14.5%) were motorcycles. [Page 1]
- Tuesday was the day of the week with the highest number of crashes (1,025) and Tuesday, Thursday, and Saturday had the highest number of fatal crashes (7). [Pages 2-3]
- The 3:00 PM – 5:59 PM time period had the highest number of crashes (1,267). The 3:00 PM – 5:59 PM and 6:00 PM – 8:59 PM time periods had the highest number of fatal crashes (7). [Pages 5-6]
- During the period from 2017 to 2021, the highest number of deer crashes occurred in 2021 (2,367). The 6:00 PM – 8:59 PM time period consistently had the highest number of deer-involved crashes during the five-year period. There were 0 fatal crashes involving deer in 2021. [Page 7]
- St. Clair County (56.1%) had the highest number of crashes in Post 34 in 2021, followed by Lapeer County (43.9%). [Page 11]
- St. Clair County (54.3%) had the highest number of fatalities in Post 34 in 2021, followed by Lapeer County (45.7%). [Page 11]
- The highest number of drivers in crashes (10,091) occurred during 2017 and the highest number of drivers coded drinking in crashes (260) occurred during 2017 within the five year period between 2017 and 2021. [Page 12]
- A total of 229 crashes involved alcohol in 2021. [Page 13]
- Alcohol-involved fatal crashes were the highest in 2021 during the five-year period from 2017 to 2021 at 11. [Page 13]
- A total of 90 crashes, 8 fatal crashes, and 15 suspected injury crashes involved drugs in 2021. [Page 14]
- There were 8,566 drivers wearing seatbelts and 68 drivers not wearing seatbelts in crashes in 2021. Of the 68 drivers not wearing seatbelts, 2 (2.9%) were killed and 37 (54.4%) were injured. [Pages 17-19]
- The most common hazardous action coded for drivers in 2021 in all crashes was unable to stop in assured clear distance (896), while the most common hazardous actions coded for drivers in fatal crashes were speed too fast and failed to yield (6). [Page 20]

2021 - Crashes and Injury by Month

Month	Crashes				People	
	Total	Fatal	Injury	Property Damage Only (PDO)	Fatalities	Injuries
January	511	2	62	447	2	85
February	527	2	86	439	3	118
March	417	1	61	355	1	89
April	389	7	75	307	7	108
May	429	3	85	341	3	116
June	510	3	93	414	3	125
July	465	6	93	366	7	131
August	426	4	98	324	4	140
September	575	3	123	449	3	176
October	713	0	96	617	0	119
November	793	1	77	715	1	99
December	712	1	89	622	1	120
Total	6,467	33	1,038	5,396	35	1,426

2021 - Driver Statistics

Age Group	MSP Post 34 - Lapeer			Driver Rates	
	2019 Population*	Licensed Drivers	Drivers in Crashes	Per 10k Population	Per 10k Licensed
0 - 15	43,726	1,333	25	5.7	187.5
16 - 20	14,541	12,185	1,091	750.3	895.4
21 - 24	11,124	11,046	812	730.0	735.1
25 - 64	129,932	121,524	5,969	459.4	491.2
65 +	47,412	47,828	1,083	228.4	226.4
Unknown	0	0	489	--	--
Total	246,735	193,916	9,469	383.8	488.3

*2021 Population of Michigan Counties (by single-year of age) not yet available from U.S. Census Bureau.

2021 - Vehicles in Crashes

Vehicle Type	Motor Vehicles		Fatal Crashes		Injury Crashes	PDO Crashes
	Number of Vehicles	% of Total	Number	% of Total	Number	Number
Passenger Car, SUV, Van	6,960	73.5	30	54.5	1,268	5,662
Motor Home	7	0.1	0	0.0	1	6
Pickup Truck	1,938	20.5	11	20.0	340	1,587
Small Truck Under 10,000 lbs. GVWR	39	0.4	0	0.0	8	31
Motorcycle	98	1.0	8	14.5	73	17
Moped/Goped	11	0.1	0	0.0	7	4
Go-Cart/Golf Cart	0	0.0	0	0.0	0	0
Snowmobile	1	0.0	1	1.8	0	0
Off-Road Vehicle (ORV)/All-Terrain Vehicle (ATV)	25	0.3	2	3.6	15	8
Other (non-registered farm equipment, construction equipment, snow plows, etc.)	27	0.3	0	0.0	3	24
Truck/Bus (over 10,000 lbs. GVWR/8+ occupants/hazmat placard)	265	2.8	3	5.5	53	209
Uncoded & Errors	98	1.0	0	0.0	4	94
Total	9,469	100.0	55	100.0	1,772	7,642

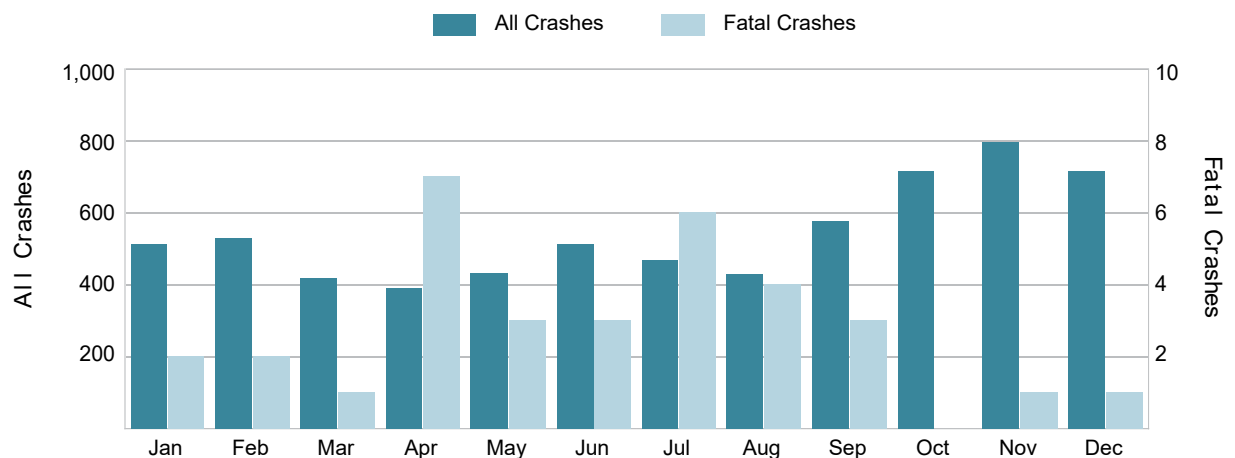
5-Year Trend - Crashes by Month

Month	2017		2018		2019		2020		2021	
	Total Crashes	Fatal Crashes	Total Crashes	Fatal Crashes	Total Crashes	Fatal Crashes	Total Crashes	Fatal Crashes	Total Crashes	Fatal Crashes
January	557	1	720	2	614	3	624	1	511	2
February	392	1	504	4	522	3	621	1	527	2
March	521	0	556	1	476	3	317	1	417	1
April	410	1	431	4	375	2	173	1	389	7
May	490	2	450	2	477	2	308	0	429	3
June	527	3	519	2	525	1	491	2	510	3
July	473	2	473	1	500	2	424	3	465	6
August	439	2	435	6	471	2	442	3	426	4
September	490	2	441	2	512	2	457	4	575	3
October	737	4	689	1	718	2	686	3	713	0
November	739	4	829	6	897	3	717	6	793	1
December	805	2	563	0	611	3	587	2	712	1
Total	6,580	24	6,610	31	6,698	28	5,847	27	6,467	33

5-Year Trend - Crashes by Day of Week

Day	2017		2018		2019		2020		2021	
	Total Crashes	Fatal Crashes	Total Crashes	Fatal Crashes	Total Crashes	Fatal Crashes	Total Crashes	Fatal Crashes	Total Crashes	Fatal Crashes
Monday	970	3	972	1	988	2	795	5	898	3
Tuesday	1,000	3	1,016	3	1,013	4	870	3	1,025	7
Wednesday	959	1	1,037	3	1,088	7	938	2	1,000	0
Thursday	1,008	3	1,050	9	991	7	978	3	978	7
Friday	1,089	3	1,042	4	1,071	1	867	4	1,003	3
Saturday	895	4	829	4	868	3	777	3	871	7
Sunday	659	7	664	7	679	4	622	7	692	6
Total	6,580	24	6,610	31	6,698	28	5,847	27	6,467	33

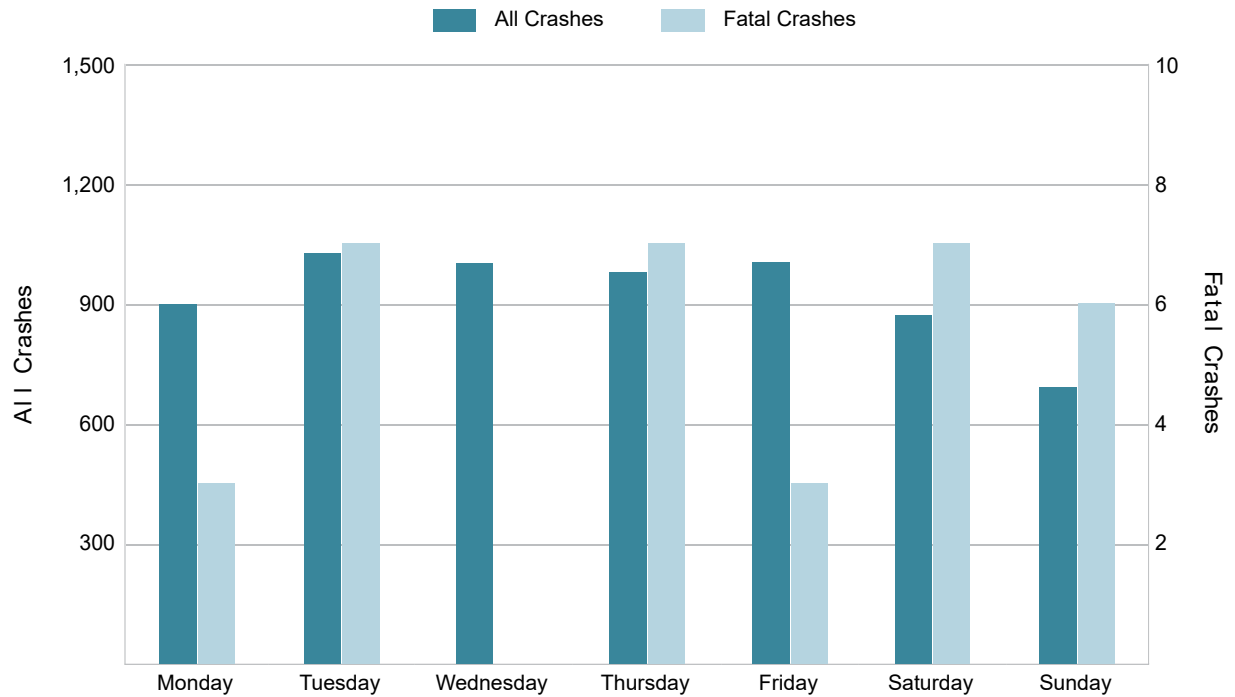
2021 Crashes by Month



2021 - Crashes by Day of Week

Day	All Crashes		Fatal Crashes		Injury Crashes			PDO Crashes
	Number	% of Total	Fatal	% of Fatal	A	B	C	Number
Monday	898	13.9	3	9.1	15	70	70	740
Tuesday	1,025	15.8	7	21.2	16	61	71	870
Wednesday	1,000	15.5	0	0.0	10	55	83	852
Thursday	978	15.1	7	21.2	18	53	79	821
Friday	1,003	15.5	3	9.1	22	57	69	852
Saturday	871	13.5	7	21.2	30	68	74	692
Sunday	692	10.7	6	18.2	10	49	58	569
Total	6,467	100.0	33	100.0	121	413	504	5,396

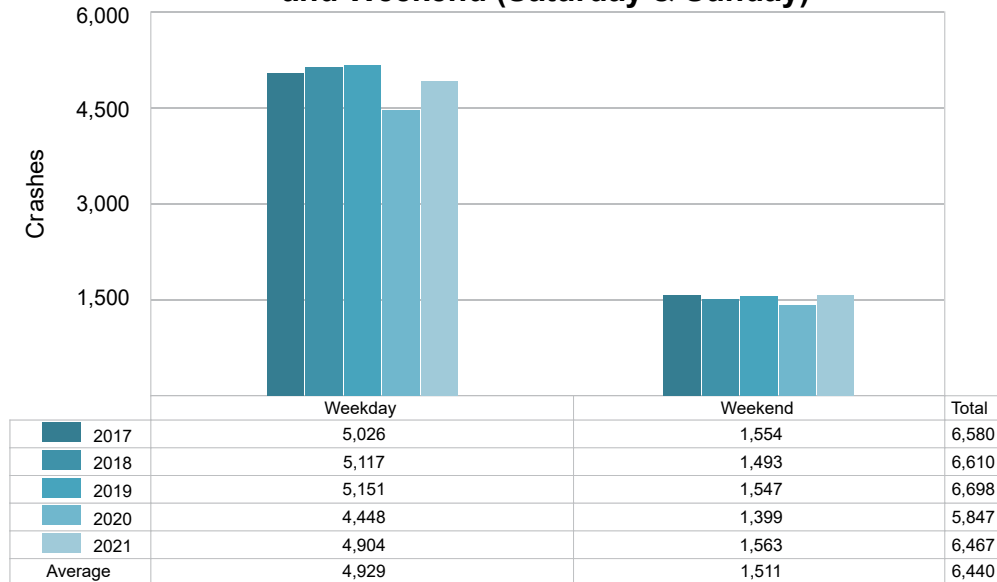
2021 Day of Week and Severity



5-Year Trend - Crashes by Weekday and Weekend

Portion of Week	2017		2018		2019		2020		2021	
	Total Crashes	Fatal Crashes	Total Crashes	Fatal Crashes	Total Crashes	Fatal Crashes	Total Crashes	Fatal Crashes	Total Crashes	Fatal Crashes
Weekday	5,026	13	5,117	20	5,151	21	4,448	17	4,904	20
Weekend	1,554	11	1,493	11	1,547	7	1,399	10	1,563	13
Total	6,580	24	6,610	31	6,698	28	5,847	27	6,467	33

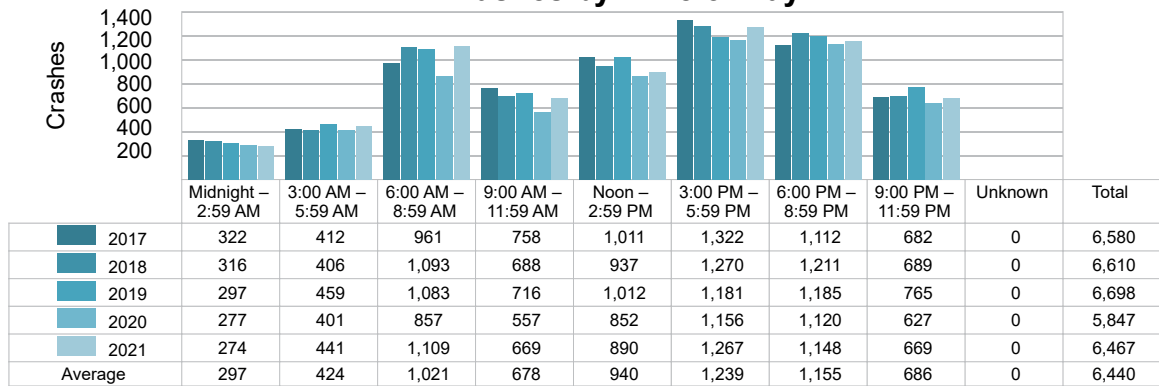
5-Year Crash Trends by Weekday (Monday - Friday) and Weekend (Saturday & Sunday)



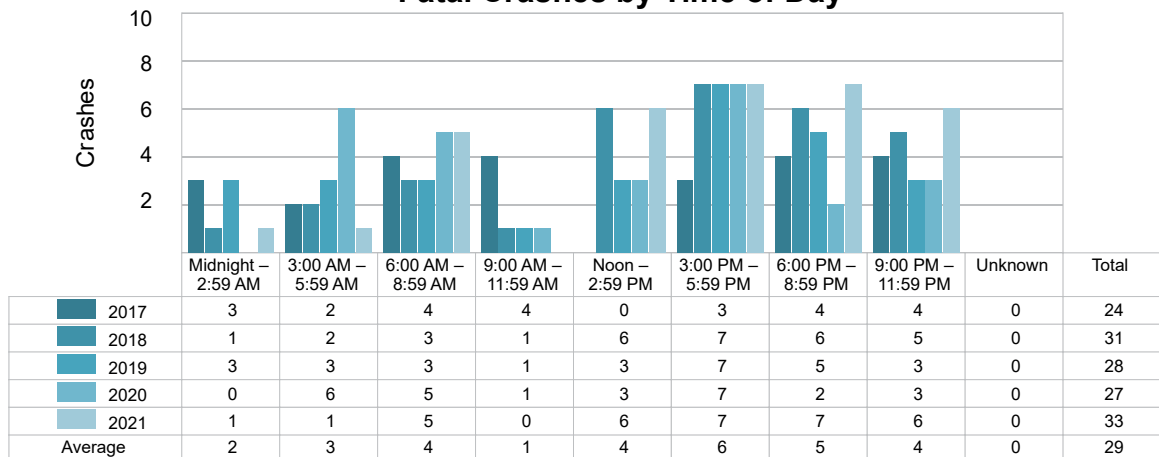
5-Year Trend - Crashes by Time of Day

Time of Day	2017		2018		2019		2020		2021	
	Total Crashes	Fatal Crashes	Total Crashes	Fatal Crashes	Total Crashes	Fatal Crashes	Total Crashes	Fatal Crashes	Total Crashes	Fatal Crashes
Midnight – 2:59 AM	322	3	316	1	297	3	277	0	274	1
3:00 AM – 5:59 AM	412	2	406	2	459	3	401	6	441	1
6:00 AM – 8:59 AM	961	4	1,093	3	1,083	3	857	5	1,109	5
9:00 AM – 11:59 AM	758	4	688	1	716	1	557	1	669	0
Noon – 2:59 PM	1,011	0	937	6	1,012	3	852	3	890	6
3:00 PM – 5:59 PM	1,322	3	1,270	7	1,181	7	1,156	7	1,267	7
6:00 PM – 8:59 PM	1,112	4	1,211	6	1,185	5	1,120	2	1,148	7
9:00 PM – 11:59 PM	682	4	689	5	765	3	627	3	669	6
Unknown	0	0	0	0	0	0	0	0	0	0
Total	6,580	24	6,610	31	6,698	28	5,847	27	6,467	33

5-Year Trend Crashes by Time of Day

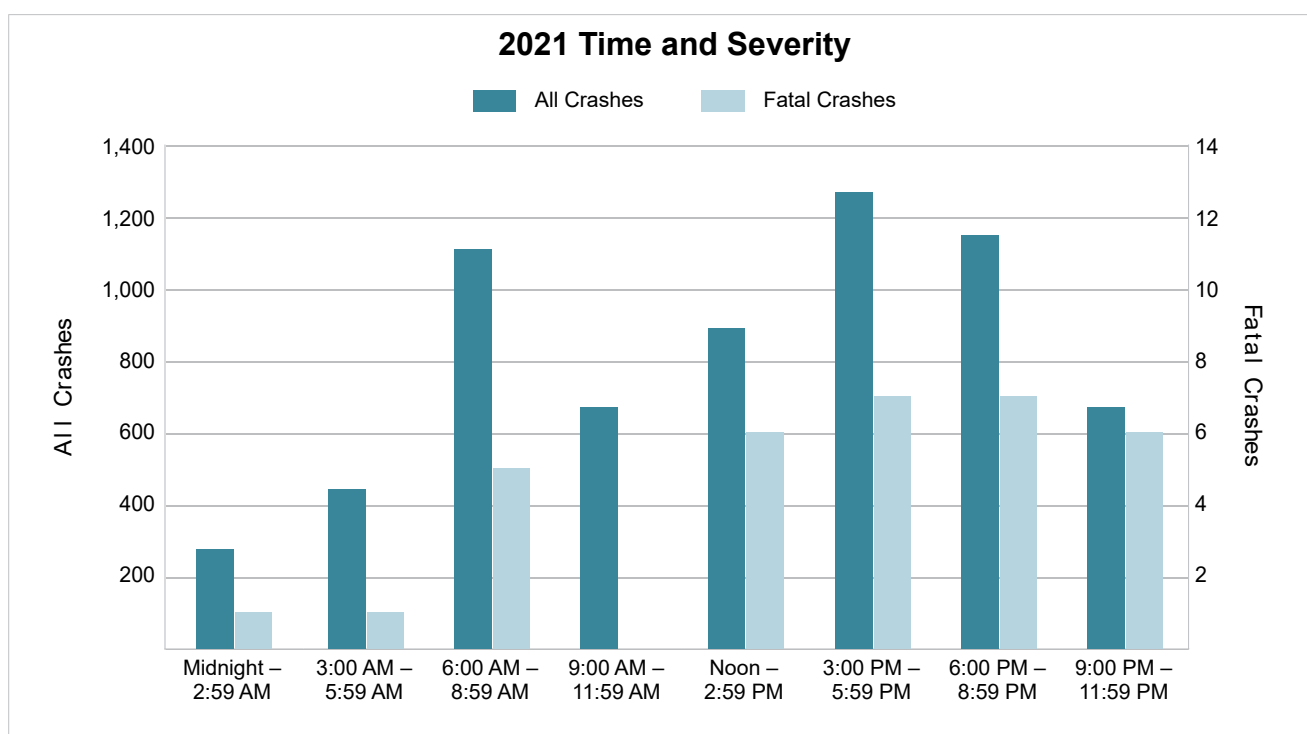


5-Year Trend Fatal Crashes by Time of Day



2021 - Time and Severity

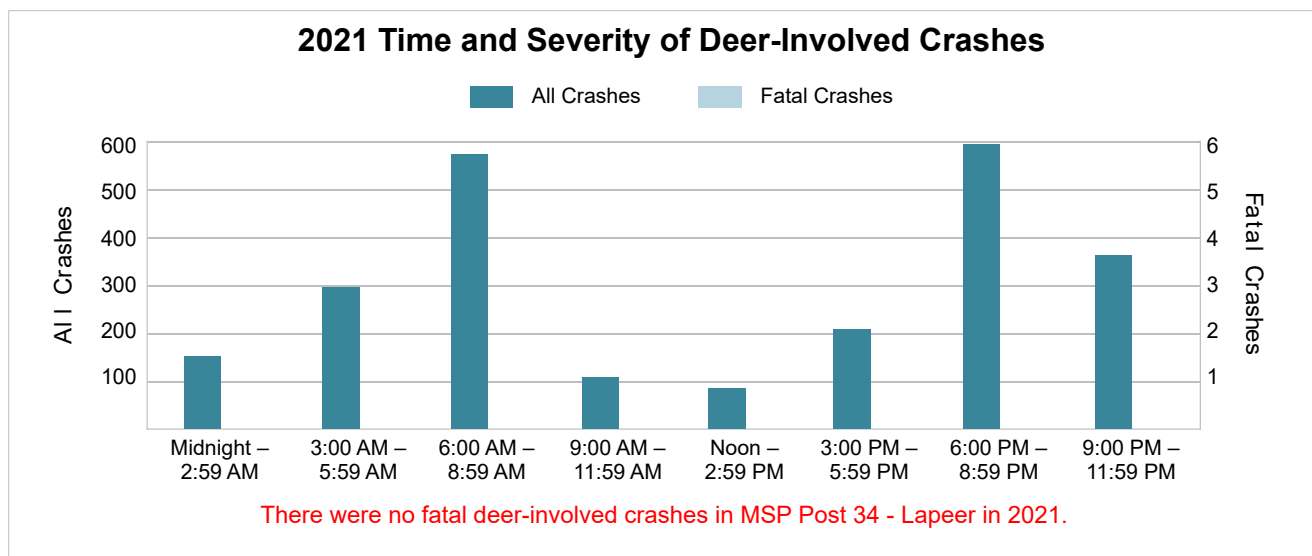
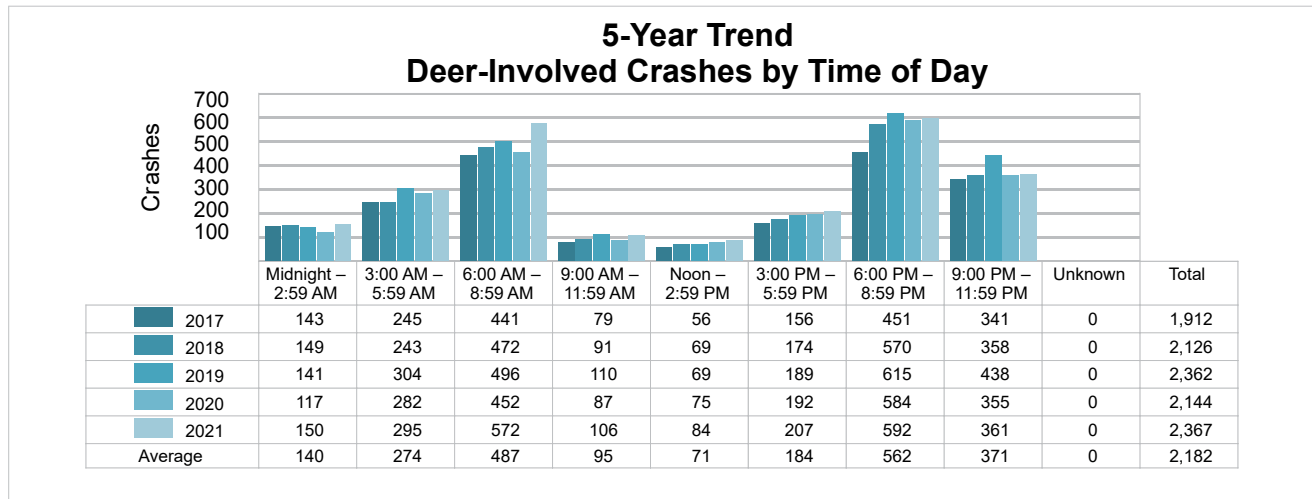
Time of Day	All Crashes		Fatal Crashes		Injury Crashes			PDO Crashes
	Number	% of Total	Number	% of Fatal	A	B	C	Number
Midnight – 2:59 AM	274	4.2	1	3.0	7	12	16	238
3:00 AM – 5:59 AM	441	6.8	1	3.0	4	24	20	392
6:00 AM – 8:59 AM	1,109	17.1	5	15.2	13	47	66	978
9:00 AM – 11:59 AM	669	10.3	0	0.0	10	54	62	543
Noon – 2:59 PM	890	13.8	6	18.2	24	72	91	697
3:00 PM – 5:59 PM	1,267	19.6	7	21.2	19	110	139	992
6:00 PM – 8:59 PM	1,148	17.8	7	21.2	29	61	72	979
9:00 PM – 11:59 PM	669	10.3	6	18.2	15	33	38	577
Unknown	0	0.0	0	0.0	0	0	0	0
Total	6,467	100.0	33	100.0	121	413	504	5,396



5-Year Trend - Deer-Involved Crashes by Time of Day

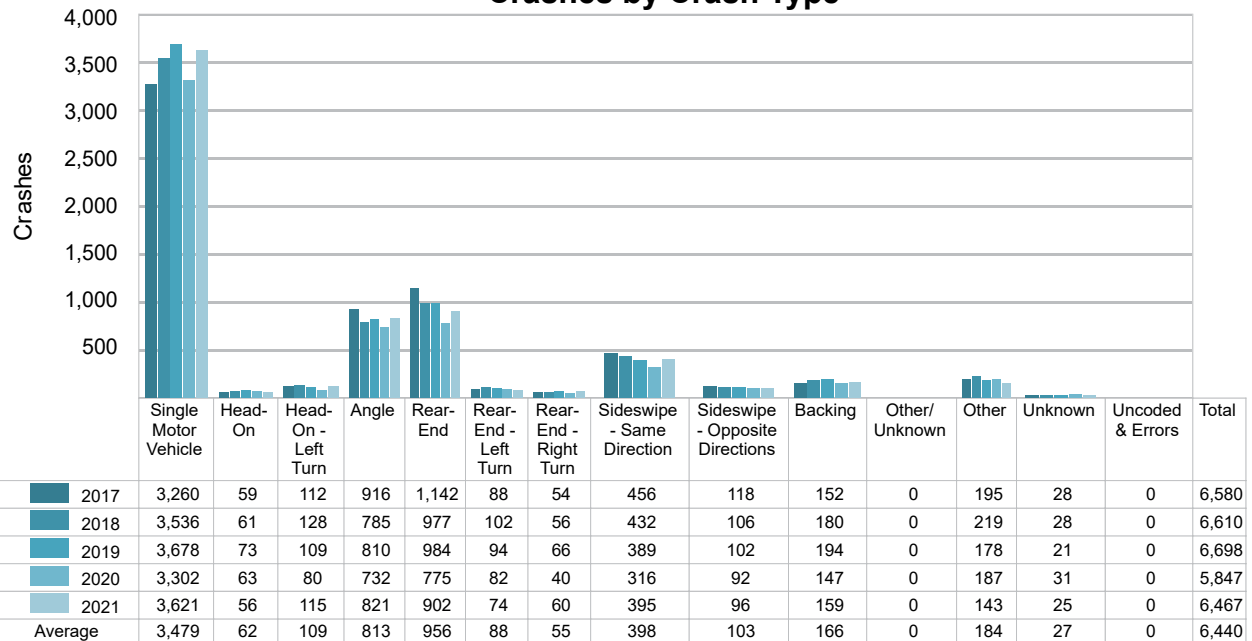
Time of Day	2017		2018		2019		2020		2021	
	Total Crashes	Fatal Crashes	Total Crashes	Fatal Crashes	Total Crashes	Fatal Crashes	Total Crashes	Fatal Crashes	Total Crashes	Fatal Crashes
Midnight – 2:59 AM	143	1	149	0	141	0	117	0	150	0
3:00 AM – 5:59 AM	245	0	243	0	304	0	282	0	295	0
6:00 AM – 8:59 AM	441	0	472	0	496	0	452	0	572	0
9:00 AM – 11:59 AM	79	0	91	0	110	0	87	0	106	0
Noon – 2:59 PM	56	0	69	0	69	0	75	0	84	0
3:00 PM – 5:59 PM	156	0	174	1	189	0	192	0	207	0
6:00 PM – 8:59 PM	451 †	0	570 †	0	615 †	1	584 †	0	592 †	0
9:00 PM – 11:59 PM	341	0	358	0	438	0	355	0	361	0
Unknown	0	0	0	0	0	0	0	0	0	0
Total	1,912	1	2,126	1	2,362	1	2,144	0	2,367	0

Note: † Indicates that the highest number of total crashes reported in the 5-year period occurred in the same time period.



5-Year Trend - Crashes by Crash Type

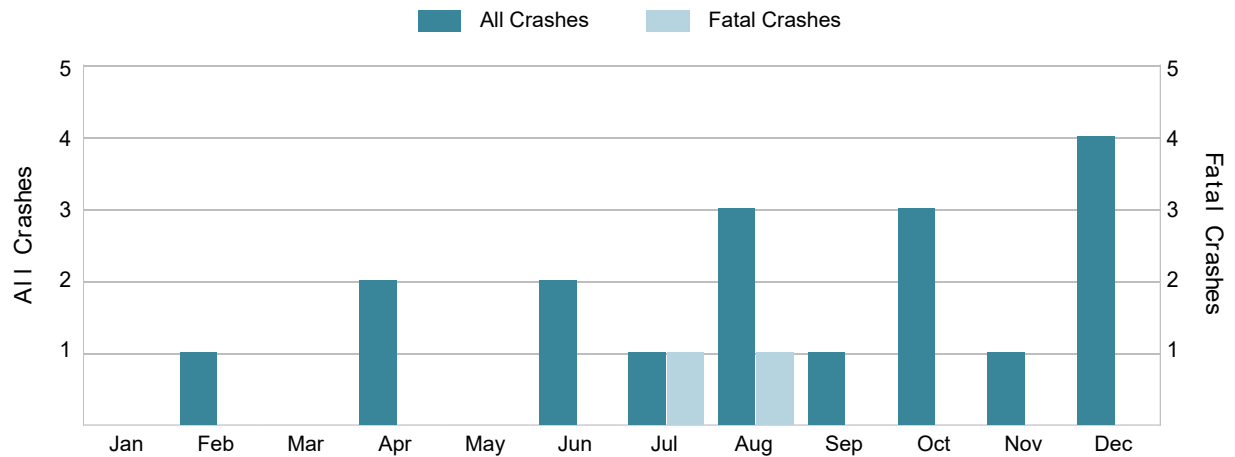
Crash Type	2017		2018		2019		2020		2021	
	Total Crashes	Fatal Crashes	Total Crashes	Fatal Crashes	Total Crashes	Fatal Crashes	Total Crashes	Fatal Crashes	Total Crashes	Fatal Crashes
Single Motor Vehicle	3,260	15	3,536	15	3,678	14	3,302	14	3,621	14
Head-On	59	1	61	5	73	7	63	6	56	8
Head-On - Left Turn	112	1	128	1	109	1	80	1	115	3
Angle	916	4	785	3	810	4	732	3	821	5
Rear-End	1,142	0	977	1	984	1	775	1	902	1
Rear-End - Left Turn	88	1	102	0	94	0	82	0	74	1
Rear-End - Right Turn	54	0	56	0	66	0	40	0	60	0
Sideswipe - Same Direction	456	0	432	2	389	1	316	0	395	0
Sideswipe - Opposite Directions	118	1	106	1	102	0	92	0	96	0
Backing	152	0	180	0	194	0	147	0	159	0
Other/Unknown	0	0	0	0	0	0	0	0	0	0
Other	195	1	219	3	178	0	187	2	143	1
Unknown	28	0	28	0	21	0	31	0	25	0
Uncoded & Errors	0	0	0	0	0	0	0	0	0	0
Total	6,580	24	6,610	31	6,698	28	5,847	27	6,467	33

5-Year Trend
Crashes by Crash Type

5-Year Trend - Pedestrian-Involved Crashes by Month

Month	2017		2018		2019		2020		2021	
	Total Crashes	Fatal Crashes	Total Crashes	Fatal Crashes	Total Crashes	Fatal Crashes	Total Crashes	Fatal Crashes	Total Crashes	Fatal Crashes
January	2	0	6	0	4	0	0	0	0	0
February	2	0	2	1	1	0	3	0	1	0
March	1	0	2	0	2	1	0	0	0	0
April	2	0	3	1	3	0	1	0	2	0
May	3	0	1	0	3	1	1	0	0	0
June	1	1	1	0	2	0	5	1	2	0
July	0	0	3	1	3	0	1	1	1	1
August	1	0	1	0	2	0	1	0	3	1
September	1	0	2	0	2	0	2	0	1	0
October	6	0	2	0	6	0	6	0	3	0
November	7	3	5	1	0	0	1	0	1	0
December	3	0	5	0	3	0	2	0	4	0
Total	29	4	33	4	31	2	23	2	18	2

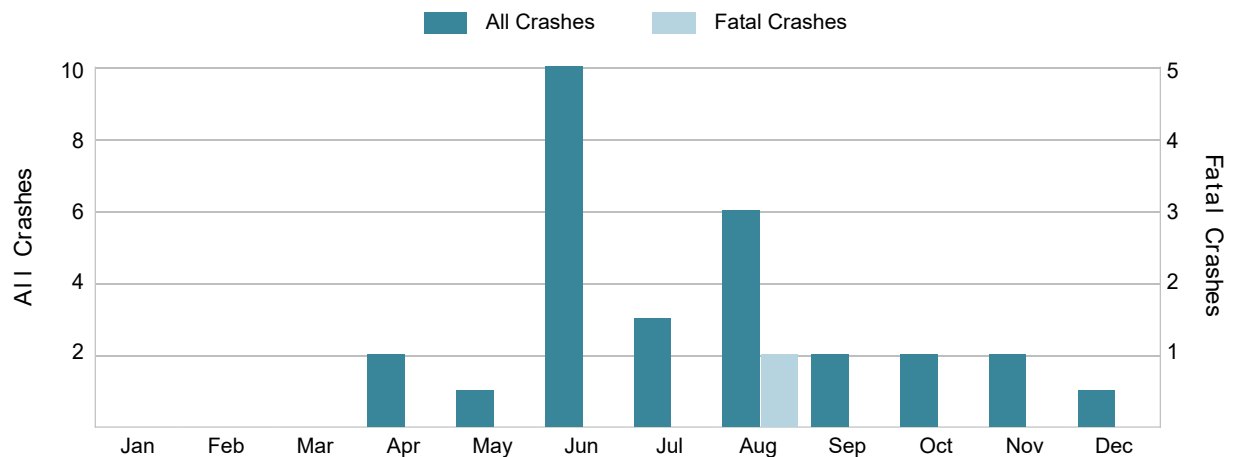
2021 Pedestrian-Involved Crashes by Month



5-Year Trend - Bicyclist-Involved Crashes by Month

Month	2017		2018		2019		2020		2021	
	Total Crashes	Fatal Crashes	Total Crashes	Fatal Crashes	Total Crashes	Fatal Crashes	Total Crashes	Fatal Crashes	Total Crashes	Fatal Crashes
January	1	0	1	0	2	0	2	0	0	0
February	2	0	1	0	0	0	2	0	0	0
March	3	0	1	0	0	0	0	0	0	0
April	0	0	0	0	2	0	1	0	2	0
May	2	0	3	0	2	0	2	0	1	0
June	2	0	6	0	4	0	5	0	10	0
July	2	0	4	0	7	0	4	0	3	0
August	6	0	5	1	6	0	4	0	6	1
September	7	0	6	0	4	0	4	0	2	0
October	6	0	2	0	5	0	0	0	2	0
November	1	0	0	0	0	0	6	0	2	0
December	0	0	0	0	3	0	1	1	1	0
Total	32	0	29	1	35	0	31	1	29	1

2021 Bicyclist-Involved Crashes by Month



2021 - Reported Motor Vehicle Crashes by County

County	Crashes												
	Total	Fatal	Injury	Property Damage	Inter-State	US Route	State Route	Local Street	Alcohol-Involved	Drug-Involved	Deer-Involved	Pedestrian-Involved	Bicyclist-Involved
Lapeer	2,841	16	415	2,410	180	0	874	1,786	89	38	1,355	6	5
St. Clair	3,626	17	623	2,986	614	0	664	2,340	140	52	1,012	12	24
Total	6,467	33	1,038	5,396	794	0	1,538	4,126	229	90	2,367	18	29

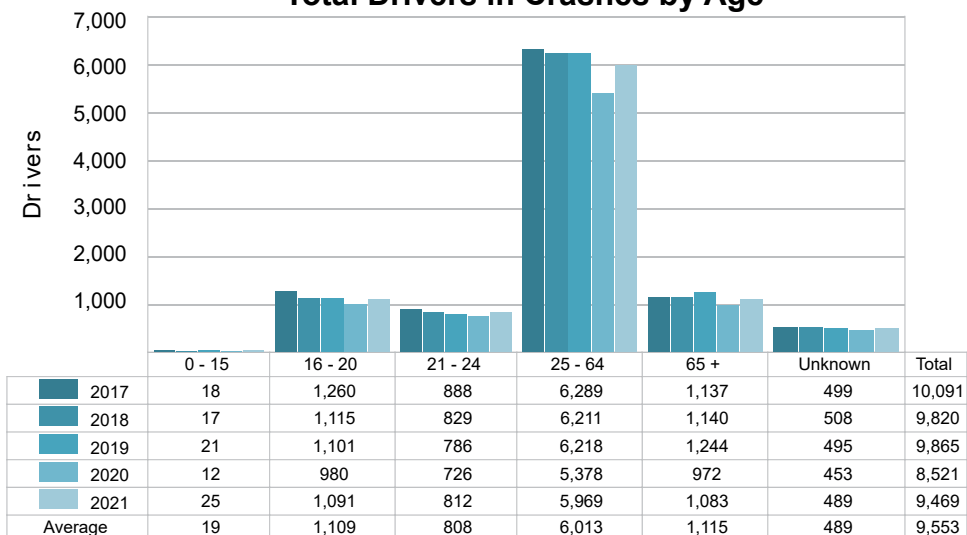
2021 - People in Reported Motor Vehicle Crashes by County

County	People					
	Fatalities	Suspected Serious Injuries	Suspected Minor Injuries	Possible Injuries	No Injuries	Uncoded & Errors
Lapeer	16	114	371	429	3,966	111
St. Clair	19	168	552	760	5,480	407
Total	35	282	923	1,189	9,446	518

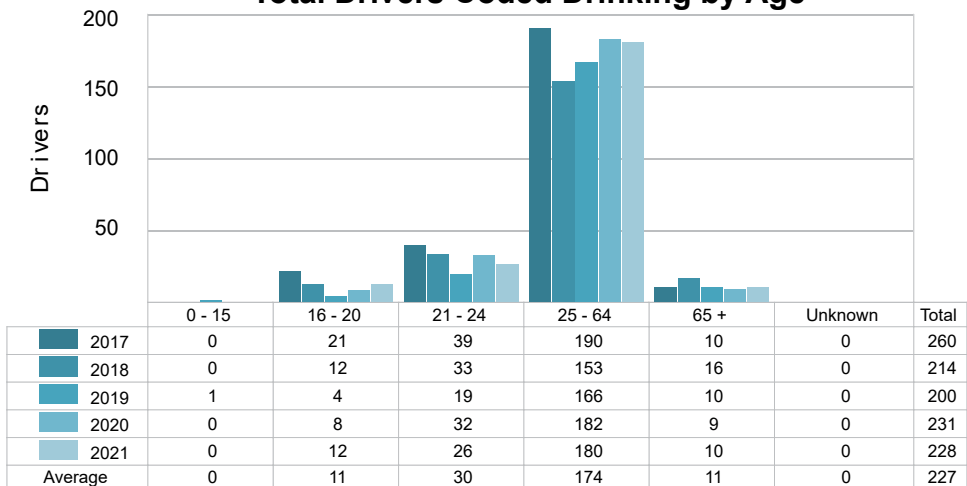
5-Year Trend - Drivers in Crashes Coded Drinking by Driver Age

Driver Age	2017		2018		2019		2020		2021	
	Total Drivers in Crashes	Total Drivers Coded Drinking	Total Drivers in Crashes	Total Drivers Coded Drinking	Total Drivers in Crashes	Total Drivers Coded Drinking	Total Drivers in Crashes	Total Drivers Coded Drinking	Total Drivers in Crashes	Total Drivers Coded Drinking
0 - 15	18	0	17	0	21	1	12	0	25	0
16 - 20	1,260	21	1,115	12	1,101	4	980	8	1,091	12
21 - 24	888	39	829	33	786	19	726	32	812	26
25 - 64	6,289	190	6,211	153	6,218	166	5,378	182	5,969	180
65 +	1,137	10	1,140	16	1,244	10	972	9	1,083	10
Unknown	499	0	508	0	495	0	453	0	489	0
Total	10,091	260	9,820	214	9,865	200	8,521	231	9,469	228

5-Year Trend Total Drivers in Crashes by Age



5-Year Trend Total Drivers Coded Drinking by Age



2021 - Bodily Alcohol Concentration (BAC) Results Among All Vehicle Drivers in Alcohol-Involved Crashes by Age

Age Group	Drivers				BAC Result Range for Drivers Coded Drinking				
	Total Drivers in Alcohol-Involved Crashes	Total Drivers Tested in all Crashes	Total Drivers Coded Drinking, Tested	Total Drivers Coded Drinking	BAC = 0.00	BAC 0.01 g/dL to 0.07 g/dL	BAC 0.08 g/dL to 0.16 g/dL	BAC 0.17 g/dL and Above	BAC Not Reported
0 - 15	0	0	0	0	0	0	0	0	0
16 - 20	21	20	7	12	0	0	1	2	9
21 - 24	31	30	22	26	0	2	5	10	9
25 - 64	220	225	151	180	0	8	37	49	86
65 +	16	14	9	10	0	2	5	0	3
Unknown	9	0	0	0	0	0	0	0	0
Total	297	289	189	228	0	12	48	61	107

Notes: BAC measured in grams (g) per deciliter (dL).

BAC may not be reported if drivers are not tested or if the results are not available immediately (as in the case of a blood test).

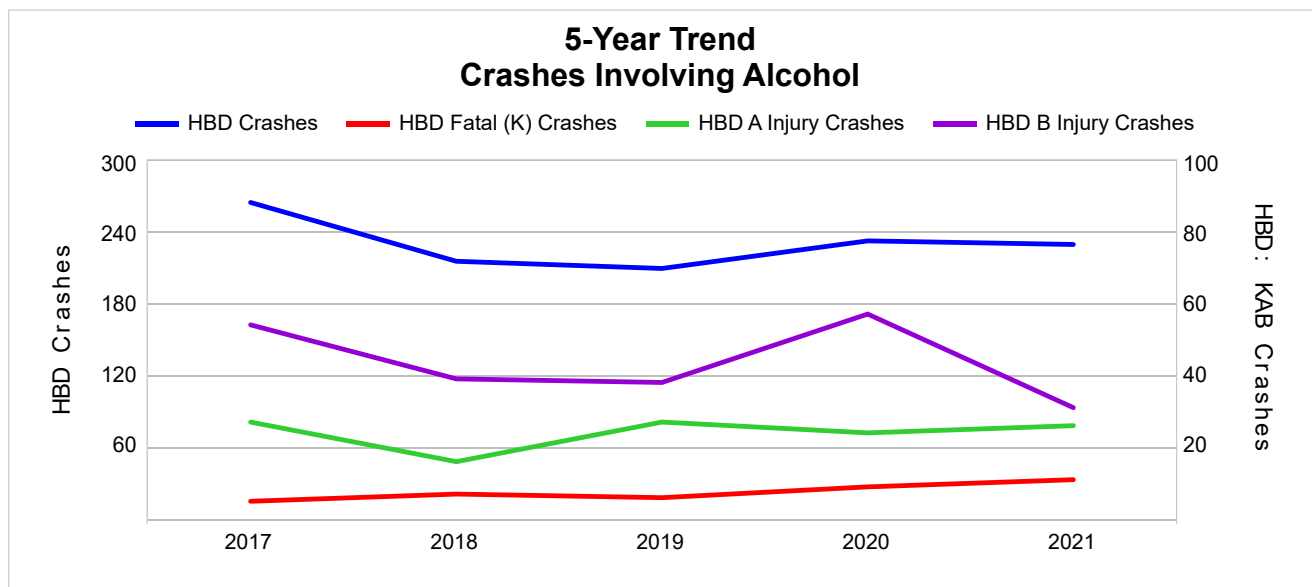
A driver may be coded by the officer as drinking even though no test is administered.

5-Year Trend - Crashes Involving Alcohol

Year	All Crashes	HBD Crashes	% HBD	Fatal Crashes	HBD Fatal Crashes	% HBD	A Injury Crashes	HBD A Injury Crashes	% HBD	B Injury Crashes	HBD B Injury Crashes	% HBD
2017	6,580	264	4.0	24	5	20.8	124	27	21.8	420	54	12.9
2018	6,610	215	3.3	31	7	22.6	108	16	14.8	419	39	9.3
2019	6,698	209	3.1	28	6	21.4	117	27	23.1	409	38	9.3
2020	5,847	232	4.0	27	9	33.3	120	24	20.0	395	57	14.4
2021	6,467	229	3.5	33 **	11 **	33.3	121	26	21.5	413	31 *	7.5 *

Note: * Indicates that the most recent year is the lowest number or percentage reported in the 5-year period in that column.

** Indicates that the most recent year is the highest number or percentage reported in the 5-year period in that column.



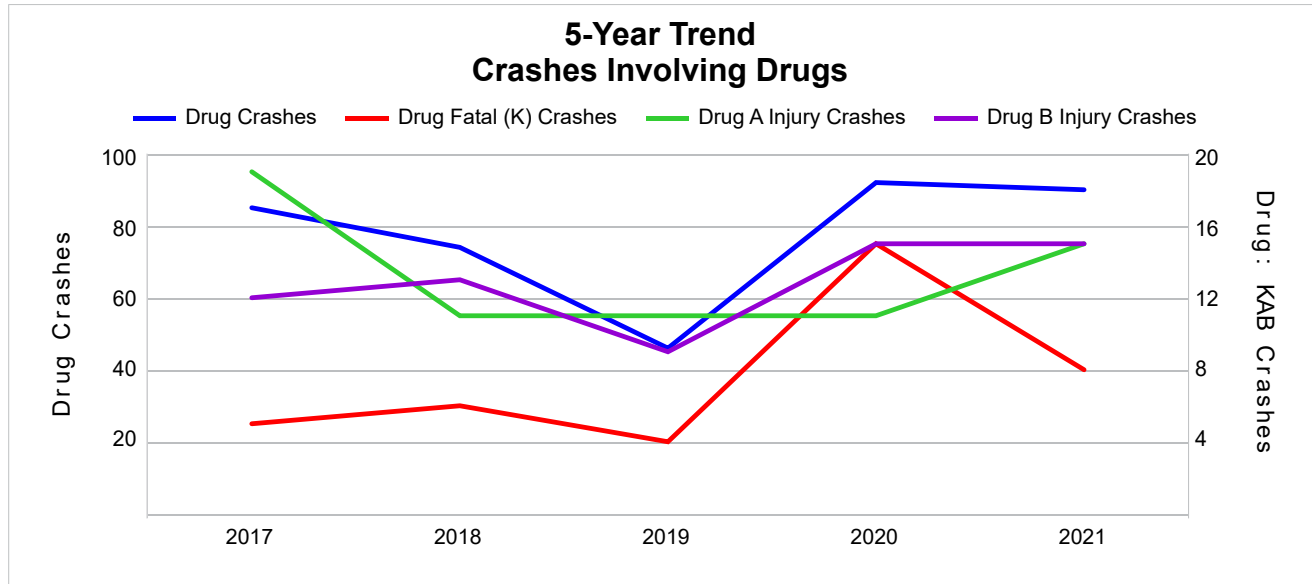
Note: Had-Been-Drinking (HBD)

5-Year Trend - Crashes Involving Drugs

Year	All Crashes	Drug Crashes	% Drug	Fatal Crashes	Drug Fatal Crashes	% Drug	A Injury Crashes	Drug A Injury Crashes	% Drug	B Injury Crashes	Drug B Injury Crashes	% Drug
2017	6,580	85	1.3	24	5	20.8	124	19	15.3	420	12	2.9
2018	6,610	74	1.1	31	6	19.4	108	11	10.2	419	13	3.1
2019	6,698	46	0.7	28	4	14.3	117	11	9.4	409	9	2.2
2020	5,847	92	1.6	27	15	55.6	120	11	9.2	395	15	3.8
2021	6,467	90	1.4	33 **	8	24.2	121	15	12.4	413	15	3.6

Note: * Indicates that the most recent year is the lowest number or percentage reported in the 5-year period in that column.

** Indicates that the most recent year is the highest number or percentage reported in the 5-year period in that column.

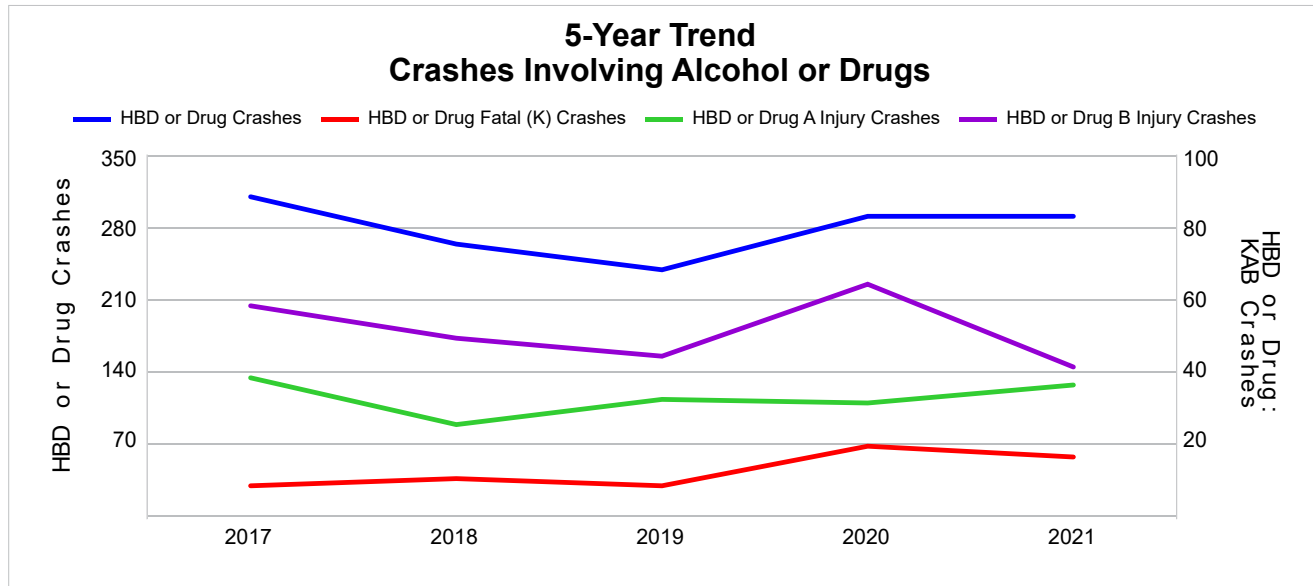


5-Year Trend - Crashes Involving Alcohol or Drugs

Year	All Crashes	HBD or Drug Crashes	% HBD or Drug	Fatal Crashes	HBD or Drug Fatal Crashes	% HBD or Drug	A Injury Crashes	HBD or Drug A Injury Crashes	% HBD or Drug	B Injury Crashes	HBD or Drug B Injury Crashes	% HBD or Drug
2017	6,580	309	4.7	24	8	33.3	124	38	30.6	420	58	13.8
2018	6,610	263	4.0	31	10	32.3	108	25	23.1	419	49	11.7
2019	6,698	238	3.6	28	8	28.6	117	32	27.4	409	44	10.8
2020	5,847	290	5.0	27	19	70.4	120	31	25.8	395	64	16.2
2021	6,467	290	4.5	33 **	16	48.5	121	36	29.8	413	41 *	9.9 *

Note: * Indicates that the most recent year is the lowest number or percentage reported in the 5-year period in that column.

** Indicates that the most recent year is the highest number or percentage reported in the 5-year period in that column.



Note: Had-Been-Drinking (HBD)

2021 - Restraints Worn Among Vehicle Drivers and Injured Passengers by Vehicle Type

Vehicle Type	Total Occupants			Fatalities			A - Suspected Serious			B - Suspected Minor			C - Possible Injury			No Injury		
	Total	Used Restraint	%	Total	Used Restraint	%	Total	Used Restraint	%	Total	Used Restraint	%	Total	Used Restraint	%	Total	Used Restraint	%
Passenger Car, SUV, Van	7,184	6,701	93.3	16	10	62.5	71	54	76.1	366	344	94.0	579	556	96.0	5,860	5,737	97.9
Motor Home	7	7	100.0	0	0	0.0	0	0	0.0	0	0	0.0	0	0	0.0	7	7	100.0
Pickup Truck	1,993	1,817	91.2	5	2	40.0	20	13	65.0	92	79	85.9	132	123	93.2	1,648	1,600	97.1
Small Truck Under 10,000 lbs. GVWR	39	36	92.3	0	0	0.0	0	0	0.0	1	1	100.0	1	1	100.0	36	34	94.4
Motorcycle	111	64	57.7	8	5	62.5	36	14	38.9	20	12	60.0	25	19	76.0	20	14	70.0
Moped/Goped	11	4	36.4	0	0	0.0	1	0	0.0	3	2	66.7	3	0	0.0	4	2	50.0
Go-Cart/Golf Cart	0	0	0.0	0	0	0.0	0	0	0.0	0	0	0.0	0	0	0.0	0	0	0.0
Snowmobile	1	1	100.0	1	1	100.0	0	0	0.0	0	0	0.0	0	0	0.0	0	0	0.0
Off-Road Vehicle (ORV)/All-Terrain Vehicle (ATV)	31	7	22.6	2	0	0.0	5	2	40.0	10	4	40.0	6	0	0.0	8	1	12.5
Other (non-registered farm equipment, construction equipment, snow plows, etc.)	27	12	44.4	0	0	0.0	1	0	0.0	0	0	0.0	0	0	0.0	23	12	52.2
Truck/Bus (over 10,000 lbs. GVWR/8+ occupants/hazmat placard)	272	242	89.0	0	0	0.0	0	0	0.0	10	7	70.0	9	4	44.4	235	231	98.3
Uncoded & Errors	98	0	0.0	0	0	0.0	0	0	0.0	0	0	0.0	0	0	0.0	0	0	0.0
Total	9,774	8,891	91.0	32	18	56.3	134	83	61.9	502	449	89.4	755	703	93.1	7,841	7,638	97.4

Note: Restraint Use includes shoulder belt only used, lap belt only used, both lap and shoulder belts used, child restraint used, restraint failure, and helmet worn.

2021 - Restraints Worn Among Vehicle Drivers and Injured Passengers by Age

Age Group	Total Occupants			Fatalities			A - Suspected Serious			B - Suspected Minor			C - Possible Injury			No Injury		
	Total	Used Restraint	%	Total	Used Restraint	%	Total	Used Restraint	%	Total	Used Restraint	%	Total	Used Restraint	%	Total	Used Restraint	%
0 - 15	113	96	85.0	0	0	0.0	7	3	42.9	19	15	78.9	69	65	94.2	17	13	76.5
16 - 20	1,128	1,097	97.3	3	1	33.3	12	10	83.3	50	46	92.0	101	99	98.0	959	941	98.1
21 - 24	838	796	95.0	2	2	100.0	8	4	50.0	44	38	86.4	71	63	88.7	711	689	96.9
25 - 64	6,090	5,819	95.6	21	11	52.4	97	58	59.8	325	289	88.9	415	383	92.3	5,218	5,078	97.3
65 +	1,116	1,083	97.0	6	4	66.7	10	8	80.0	64	61	95.3	99	93	93.9	936	917	98.0
Unknown	489	0	0.0	0	0	0.0	0	0	0.0	0	0	0.0	0	0	0.0	0	0	0.0
Total	9,774	8,891	91.0	32	18	56.3	134	83	61.9	502	449	89.4	755	703	93.1	7,841	7,638	97.4

Note: Restraint Use includes shoulder belt only used, lap belt only used, both lap and shoulder belts used, child restraint used, restraint failure, and helmet worn.

5-Year Trend - Restraint Use Among Drivers

Restraint Use	2017			2018			2019			2020			2021		
	Drivers	Fatal Drivers	Injured Drivers	Drivers	Fatal Drivers	Injured Drivers	Drivers	Fatal Drivers	Injured Drivers	Drivers	Fatal Drivers	Injured Drivers	Drivers	Fatal Drivers	Injured Drivers
No Belts Available	8	0	2	11	1	1	8	0	1	5	0	1	11	0	1
Shoulder Belt Only Used	12	0	2	21	0	4	34	0	0	33	0	4	39	0	5
Lap Belt Only Used	11	0	3	6	0	1	7	0	1	4	0	0	6	0	2
Both Lap & Shoulder Belt Used	9,248	4	1,031	8,893	12	961	8,945	10	904	7,643	4	792	8,520	12	925
No Belts Used	68	6	39	89	4	45	69	10	33	78	10	44	57	2	36
Child Restraint Used - Forward Facing	0	0	0	0	0	0	0	0	0	0	0	0	0	0	0
Child Restraint Not Used, Unavailable or Improper Use	0	0	0	0	0	0	0	0	0	0	0	0	0	0	0
Child Restraint Used - Rear Facing	0	0	0	0	0	0	0	0	0	0	0	0	0	0	0
Child Restraint Used - Booster Seat	0	0	0	0	0	0	0	0	0	0	0	0	0	0	0
Restraint Failure	0	0	0	2	0	1	0	0	0	1	0	1	1	0	1
Restraint Use Unknown	445	2	24	493	1	41	483	1	34	416	2	38	471	4	30
Helmet Worn	50	3	36	49	1	36	60	2	47	70	3	46	69	6	46
Helmet Not Worn	39	4	31	23	3	17	29	1	25	58	3	43	52	3	37
Helmet Use Unknown	1	0	0	6	1	4	11	1	8	7	1	2	11	2	6
Uncoded & Errors	209	0	0	227	0	0	219	0	0	206	0	0	232	0	0
Total	10,091	19	1,168	9,820	23	1,111	9,865	25	1,053	8,521	23	971	9,469	29	1,089

5-Year Trend - Restraint Use Among Drivers Coded Drinking

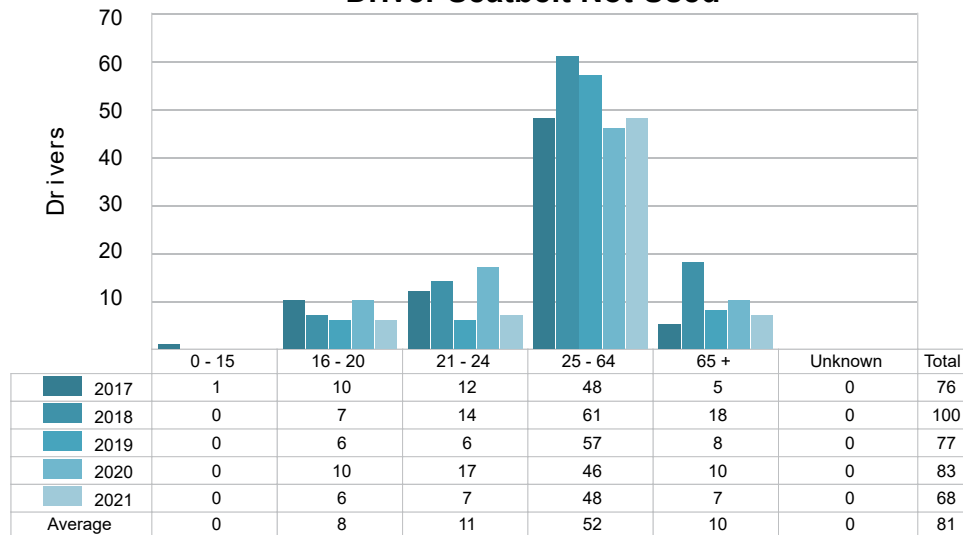
Restraint Use	2017			2018			2019			2020			2021		
	Drivers	Fatal Drivers	Injured Drivers	Drivers	Fatal Drivers	Injured Drivers	Drivers	Fatal Drivers	Injured Drivers	Drivers	Fatal Drivers	Injured Drivers	Drivers	Fatal Drivers	Injured Drivers
No Belts Available	0	0	0	0	0	0	0	0	0	1	0	0	0	0	0
Shoulder Belt Only Used	0	0	0	0	0	0	1	0	0	1	0	1	0	0	0
Lap Belt Only Used	0	0	0	0	0	0	0	0	0	0	0	0	0	0	0
Both Lap & Shoulder Belt Used	182	0	58	159	3	55	132	0	45	155	0	59	170	2	54
No Belts Used	24	1	19	10	1	4	16	5	9	16	4	9	9	2	5
Child Restraint Used - Forward Facing	0	0	0	0	0	0	0	0	0	0	0	0	0	0	0
Child Restraint Not Used, Unavailable or Improper Use	0	0	0	0	0	0	0	0	0	0	0	0	0	0	0
Child Restraint Used - Rear Facing	0	0	0	0	0	0	0	0	0	0	0	0	0	0	0
Child Restraint Used - Booster Seat	0	0	0	0	0	0	0	0	0	0	0	0	0	0	0
Restraint Failure	0	0	0	0	0	0	0	0	0	0	0	0	0	0	0
Restraint Use Unknown	39	1	11	41	1	18	45	0	15	41	1	15	33	0	8
Helmet Worn	7	0	6	2	0	2	0	0	0	5	0	4	2	1	0
Helmet Not Worn	8	2	5	1	0	0	5	0	5	12	1	9	11	3	7
Helmet Use Unknown	0	0	0	1	0	1	1	0	0	0	0	0	3	1	2
Uncoded & Errors	0	0	0	0	0	0	0	0	0	0	0	0	0	0	0
Total	260	4	99	214	5	80	200	5	74	231	6	97	228	9	76

5-Year Trend - Seatbelt Not Used Among Drivers by Age

Age Group	2017			2018			2019			2020			2021		
	Drivers	Fatal Drivers	Injured Drivers	Drivers	Fatal Drivers	Injured Drivers	Drivers	Fatal Drivers	Injured Drivers	Drivers	Fatal Drivers	Injured Drivers	Drivers	Fatal Drivers	Injured Drivers
0 - 15	1	0	0	0	0	0	0	0	0	0	0	0	0	0	0
16 - 20	10	0	9	7	0	4	6	0	4	10	2	6	6	1	3
21 - 24	12	1	6	14	0	6	6	1	3	17	2	12	7	0	4
25 - 64	48	4	24	61	3	30	57	8	22	46	5	24	48	1	27
65 +	5	1	2	18	2	6	8	1	5	10	1	3	7	0	3
Unknown	0	0	0	0	0	0	0	0	0	0	0	0	0	0	0
Total	76	6	41	100	5	46	77	10	34	83	10	45	68	2	37

Note: Seatbelt Not Used includes no belts available or no belts used.

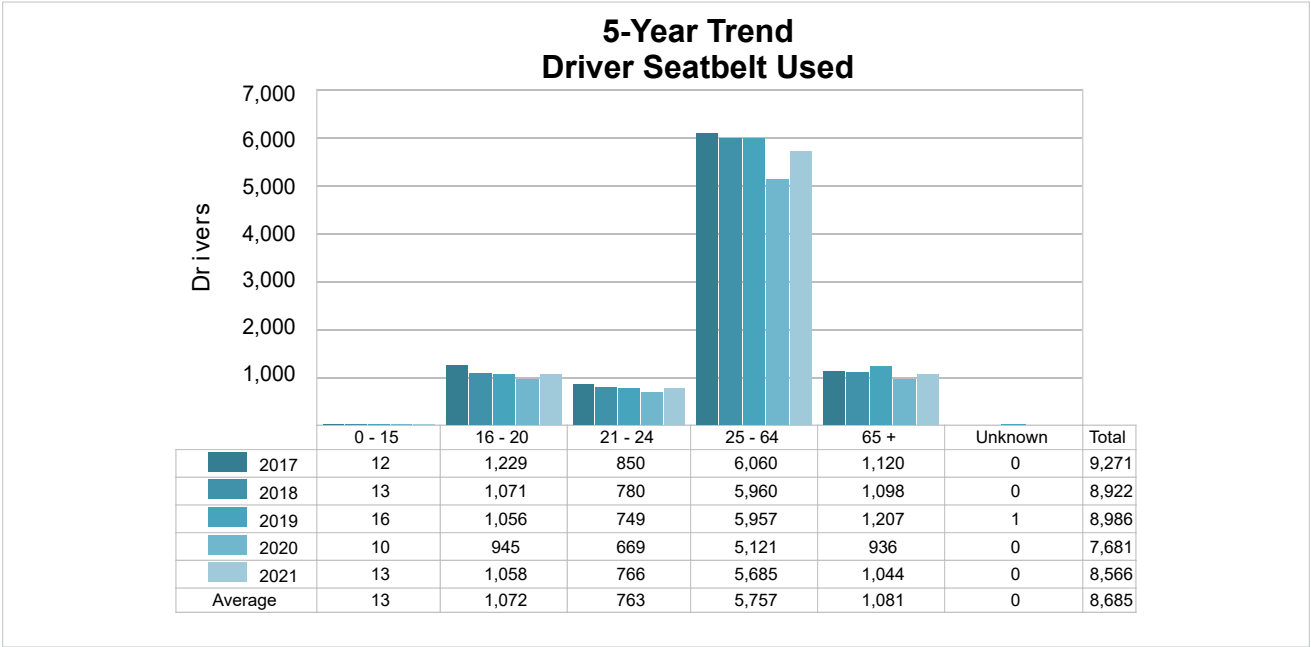
5-Year Trend Driver Seatbelt Not Used



5-Year Trend - Seatbelt Used Among Drivers by Age

Age Group	2017			2018			2019			2020			2021		
	Drivers	Fatal Drivers	Injured Drivers	Drivers	Fatal Drivers	Injured Drivers	Drivers	Fatal Drivers	Injured Drivers	Drivers	Fatal Drivers	Injured Drivers	Drivers	Fatal Drivers	Injured Drivers
0 - 15	12	0	2	13	1	5	16	0	2	10	0	1	13	0	1
16 - 20	1,229	0	151	1,071	2	135	1,056	0	131	945	0	114	1,058	1	117
21 - 24	850	0	83	780	0	72	749	0	77	669	0	70	766	2	80
25 - 64	6,060	3	649	5,960	8	609	5,957	9	551	5,121	3	489	5,685	6	608
65 +	1,120	1	151	1,098	1	146	1,207	1	144	936	1	123	1,044	3	127
Unknown	0	0	0	0	0	0	1	0	0	0	0	0	0	0	0
Total	9,271	4	1,036	8,922	12	967	8,986	10	905	7,681	4	797	8,566	12	933

Note: Seatbelt Used includes shoulder belt only used, lap belt only used, both lap and shoulder belts used, and restraint failure.



5-Year Trend - Drivers in Crashes by Hazardous Action

Hazardous Action	2017		2018		2019		2020		2021	
	Total Drivers in Crashes	Drivers in Fatal Crashes	Total Drivers in Crashes	Drivers in Fatal Crashes	Total Drivers in Crashes	Drivers in Fatal Crashes	Total Drivers in Crashes	Drivers in Fatal Crashes	Total Drivers in Crashes	Drivers in Fatal Crashes
None	5,470	15	5,366	17	5,570	14	4,858	13	5,391	23
Speed Too Fast	622	2	732	6	626	8	543	5	521	6
Speed Too Slow	1	0	2	1	2	0	1	0	4	0
Failed to Yield	901	1	804	2	802	2	737	2	862	6
Disregard Traffic Control	162	2	141	1	150	3	128	2	143	2
Drove Wrong Way	6	0	2	1	3	0	6	0	13	1
Drove Left of Center	72	2	69	3	70	2	63	6	71	4
Improper Passing	55	0	44	0	59	1	57	0	70	1
Improper Lane Use	161	1	202	0	173	1	135	0	181	1
Improper Turn	116	1	117	0	99	0	97	0	88	0
Improper/No Signal	7	0	8	0	12	0	6	0	14	0
Improper Backing	187	0	176	0	186	0	137	0	156	0
Unable to Stop in Assured Clear Distance	1,165	0	1,023	3	1,033	2	779	0	896	1
Other	331	2	332	7	326	1	274	2	335	3
Unknown	403	6	379	2	353	4	315	4	308	4
Reckless Driving	48	1	27	2	29	1	41	2	41	3
Careless/Negligent Driving	183	2	180	4	175	2	160	2	160	0
Uncoded & Errors	201	0	216	1	197	3	184	4	215	0
Total	10,091	35	9,820	50	9,865	44	8,521	42	9,469	55

Office of Highway Safety Planning

Physical Address:
7150 Harris Drive
Dimondale, Michigan 48821

Mailing Address:
P.O. Box 30634
Lansing, Michigan 48909

Find us on the web:
MichiganTrafficCrashFacts.org
mtcf-info@umich.edu

