



2021

MTCF
Michigan Traffic
Crash Facts

Michigan Traffic Crash Facts

Reporting Criteria

Please pay particular attention to the wording when interpreting the three levels of data gathered for this report.

Crash

The Crash Level analyzes data related to crash events and returns one result per crash.

Examples: Time, weather, and location.

Units

The Units Level analyzes the experience of the units in the crash and returns one result per vehicle, driver, pedestrian, bicyclist, or train.

Examples: Vehicle type, driver condition, and unit events.

People

The People Level analyzes the experience of the people involved in the crash and returns one result per occupant/person/party.

Examples: Age, injury severity, and seat belt or helmet use.

KABCO Injury Indicator:

K = Killed

A = Suspected Serious Injury

B = Suspected Minor Injury

C = Possible Injury

O = No Injury

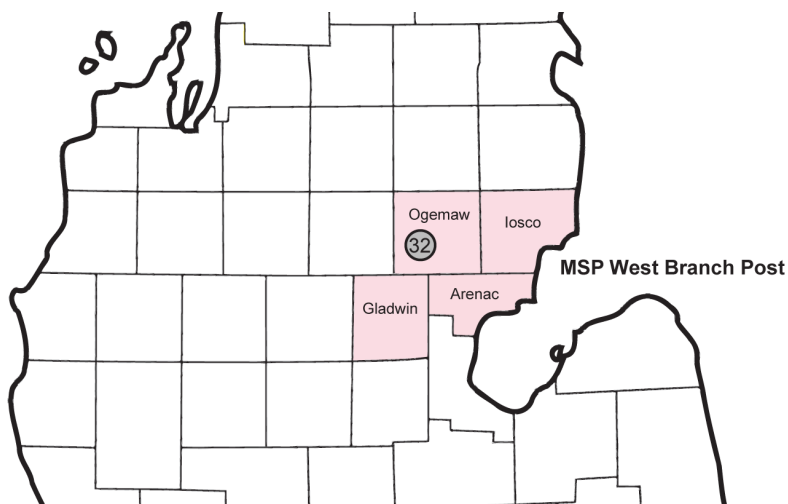
Property Damage Only (PDO)



Michigan State Police (MSP) Post 32 - West Branch

2021 Traffic Crash Data & 2017-2021 5-Year Trends

MSP Post 32 - West Branch is comprised of Arenac, Gladwin, Iosco and Ogemaw counties. Trend tables for this report are based on those counties.



Sources:

The crashes in this report occurred on public roadways in Michigan and resulted in injuries, fatalities, or property damage (with \$1,000 as a reporting threshold). The information was gathered from Michigan Traffic Crash Report Forms (UD-10) submitted by local police departments, sheriff's offices, and the Michigan State Police. Other related information was obtained from the departments of Transportation, State, and Community Health.

MSP Post 32 - West Branch

- There were 2,822 crashes in Post 32 during 2021. [Page 1]
- A total of 18 fatalities resulted from 17 fatal crashes in 2021 in Post 32. [Page 1]
- There were 540 injuries and 399 injury crashes. [Page 1]
- There were 2,406 property damage only crashes (no fatalities or injuries). [Page 1]
- November had the highest number of crashes (352). [Pages 1-2]
- October had the highest number of fatal crashes (4) and fatalities (4). [Pages 1-2]
- December had the highest number of injury crashes (45) while July had the highest number of injuries (66). [Page 1]
- November had the highest number of property damage only crashes (323). [Page 1]
- Of all vehicles involved in fatal crashes, 0 (0.0%) were motorcycles. [Page 1]
- Friday was the day of the week with the highest number of crashes (501) and Sunday had the highest number of fatal crashes (4). [Pages 2-3]
- The 6:00 PM – 8:59 PM time period had the highest number of crashes (547). This holds true for every year between 2017 and 2021. The Noon – 2:59 PM time period had the highest number of fatal crashes (7). [Pages 5-6]
- During the period from 2017 to 2021, the highest number of deer crashes occurred in 2019 (1,710). The 6:00 PM – 8:59 PM time period had the highest number of deer-involved crashes. There were 0 fatal crashes involving deer in 2021. [Page 7]
- Ogemaw County (28.0%) had the highest number of crashes in Post 32 in 2021, followed by Arenac County (25.2%), and Gladwin County (25.2%). [Page 11]
- Ogemaw County (38.9%) had the highest number of fatalities in Post 32 in 2021, followed by Iosco County (27.8%), and Arenac County (22.2%). [Page 11]
- The highest number of drivers in crashes (3,824) occurred during 2019 and the highest number of drivers coded drinking in crashes (136) occurred during 2017 within the five year period between 2017 and 2021. [Page 12]
- A total of 115 crashes involved alcohol in 2021. [Page 13]
- Alcohol-involved fatal crashes were the highest in 2020 during the five-year period from 2017 to 2021 at 8. [Page 13]
- A total of 38 crashes, 6 fatal crashes, and 6 suspected injury crashes involved drugs in 2021, all the highest during the five-year period. [Page 14]
- There were 3,245 drivers wearing seatbelts and 54 drivers not wearing seatbelts in crashes in 2021. Of the 54 drivers not wearing seatbelts, 5 (9.3%) were killed and 27 (50.0%) were injured. [Pages 17-19]
- The most common hazardous action coded for drivers in 2021 in all crashes was speed too fast (395), while the most common hazardous action coded for drivers in fatal crashes was unknown (7). [Page 20]

2021 - Crashes and Injury by Month

Month	Crashes				People	
	Total	Fatal	Injury	Property Damage Only (PDO)	Fatalities	Injuries
January	234	1	31	202	1	42
February	189	1	19	169	1	25
March	162	1	23	138	1	30
April	128	2	20	106	2	24
May	203	0	39	164	0	44
June	244	0	36	208	0	49
July	235	1	41	193	1	66
August	209	2	43	164	2	58
September	229	1	34	194	1	43
October	337	4	41	292	4	51
November	352	2	27	323	3	43
December	300	2	45	253	2	65
Total	2,822	17	399	2,406	18	540

2021 - Driver Statistics

Age Group	MSP Post 32 - West Branch			Driver Rates	
	2019 Population*	Licensed Drivers	Drivers in Crashes	Per 10k Population	Per 10k Licensed
0 - 15	13,622	296	11	8.1	371.6
16 - 20	4,061	3,174	329	810.1	1,036.5
21 - 24	3,042	2,964	253	831.7	853.6
25 - 64	41,907	39,178	2,285	545.3	583.2
65 +	23,824	24,151	558	234.2	231.0
Unknown	0	0	70	--	--
Total	86,456	69,763	3,506	405.5	502.6

*2021 Population of Michigan Counties (by single-year of age) not yet available from U.S. Census Bureau.

2021 - Vehicles in Crashes

Vehicle Type	Motor Vehicles		Fatal Crashes		Injury Crashes	PDO Crashes
	Number of Vehicles	% of Total	Number	% of Total	Number	Number
Passenger Car, SUV, Van	2,465	70.3	13	43.3	373	2,079
Motor Home	4	0.1	0	0.0	1	3
Pickup Truck	863	24.6	10	33.3	135	718
Small Truck Under 10,000 lbs. GVWR	17	0.5	0	0.0	3	14
Motorcycle	34	1.0	0	0.0	30	4
Moped/Goped	2	0.1	0	0.0	2	0
Go-Cart/Golf Cart	1	0.0	0	0.0	0	1
Snowmobile	2	0.1	1	3.3	0	1
Off-Road Vehicle (ORV)/All-Terrain Vehicle (ATV)	14	0.4	0	0.0	7	7
Other (non-registered farm equipment, construction equipment, snow plows, etc.)	20	0.6	0	0.0	0	20
Truck/Bus (over 10,000 lbs. GVWR/8+ occupants/hazmat placard)	66	1.9	6	20.0	12	48
Uncoded & Errors	18	0.5	0	0.0	2	16
Total	3,506	100.0	30	100.0	565	2,911

MSP Post 32 - West Branch (continued)

5-Year Trend - Crashes by Month

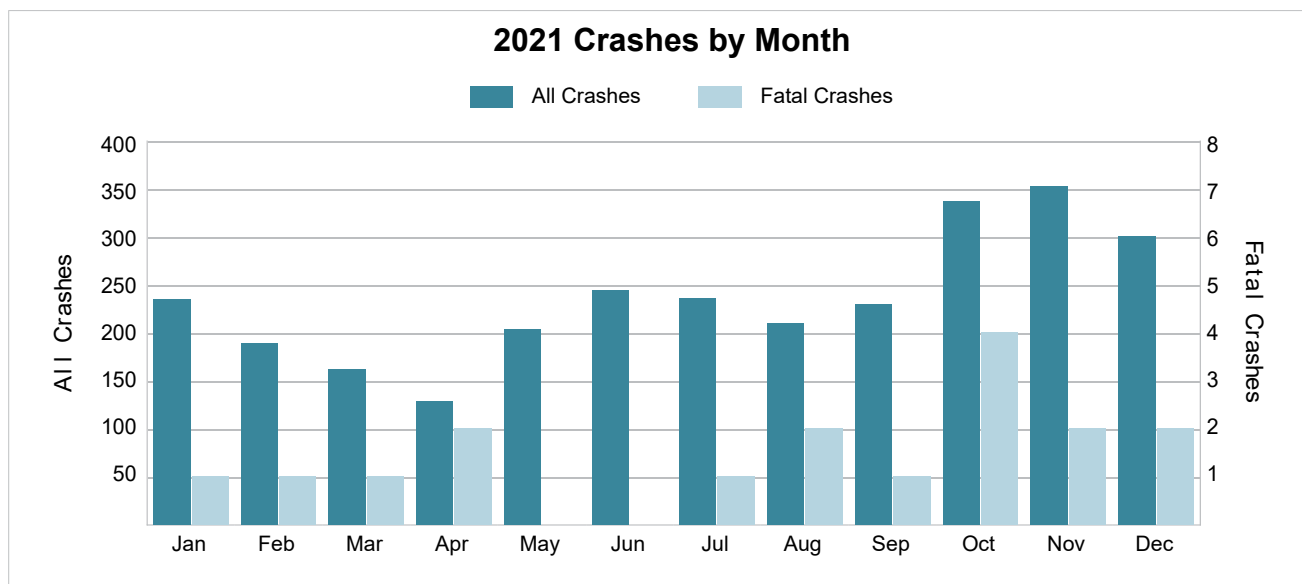
Month	2017		2018		2019		2020		2021	
	Total Crashes	Fatal Crashes	Total Crashes	Fatal Crashes	Total Crashes	Fatal Crashes	Total Crashes	Fatal Crashes	Total Crashes	Fatal Crashes
January	233	1	277	0	264	0	264	1	234	1
February	183	0	251	3	245	0	213	0	189	1
March	218	2	232	0	187	1	125	0	162	1
April	174	2	268	1	210	0	113	0	128	2
May	183	0	202	2	203	1	172	2	203	0
June	220	3	253	3	273	0	276	3	244	0
July	263	2	268	0	251	3	227	2	235	1
August	199	1	177	1	221	2	210	2	209	2
September	251	0	187	0	201	1	199	2	229	1
October	311	2	289	3	310	3	325	2	337	4
November	350 †	2	438 †	1	483 †	0	353 †	3	352 †	2
December	343	2	245	0	315	2	228	1	300	2
Total	2,928	17	3,087	14	3,163	13	2,705	18	2,822	17

Note: † Indicates that the highest number of total crashes reported in the 5-year period occurred in the same month.

5-Year Trend - Crashes by Day of Week

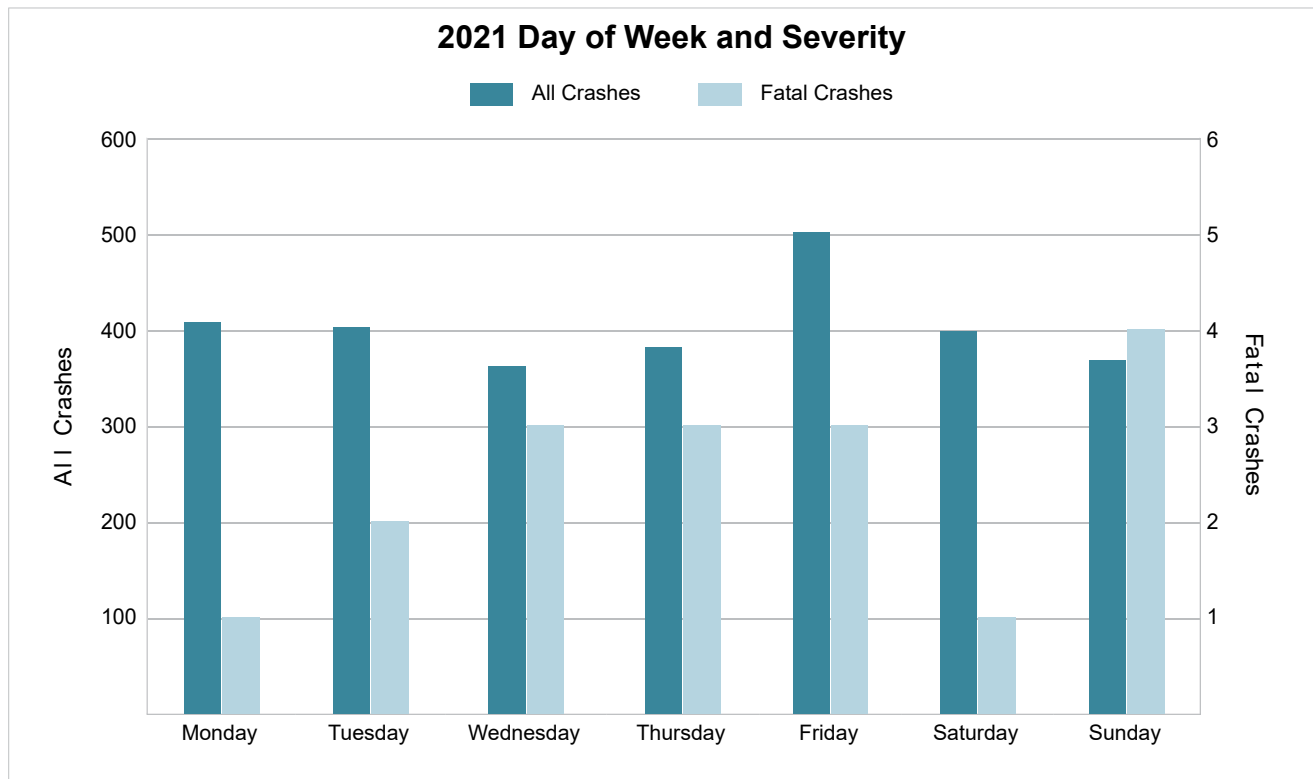
Day	2017		2018		2019		2020		2021	
	Total Crashes	Fatal Crashes	Total Crashes	Fatal Crashes	Total Crashes	Fatal Crashes	Total Crashes	Fatal Crashes	Total Crashes	Fatal Crashes
Monday	422	3	407	1	455	2	374	1	408	1
Tuesday	375	4	487	3	437	2	371	2	403	2
Wednesday	425	2	434	1	481	1	371	1	362	3
Thursday	432	3	457	3	419	2	402	4	382	3
Friday	449 †	1	517 †	2	540 †	2	408 †	4	501 †	3
Saturday	447	1	384	1	456	3	399	3	398	1
Sunday	378	3	401	3	375	1	380	3	368	4
Total	2,928	17	3,087	14	3,163	13	2,705	18	2,822	17

Note: † Indicates that the highest number of total crashes reported in the 5-year period occurred on the same day of the week.



2021 - Crashes by Day of Week

Day	All Crashes		Fatal Crashes		Injury Crashes			PDO Crashes
	Number	% of Total	Fatal	% of Fatal	A	B	C	Number
Monday	408	14.5	1	5.9	10	21	30	346
Tuesday	403	14.3	2	11.8	7	15	25	354
Wednesday	362	12.8	3	17.6	7	9	25	318
Thursday	382	13.5	3	17.6	14	16	31	318
Friday	501	17.8	3	17.6	14	23	44	417
Saturday	398	14.1	1	5.9	15	9	27	346
Sunday	368	13.0	4	23.5	8	23	26	307
Total	2,822	100.0	17	100.0	75	116	208	2,406

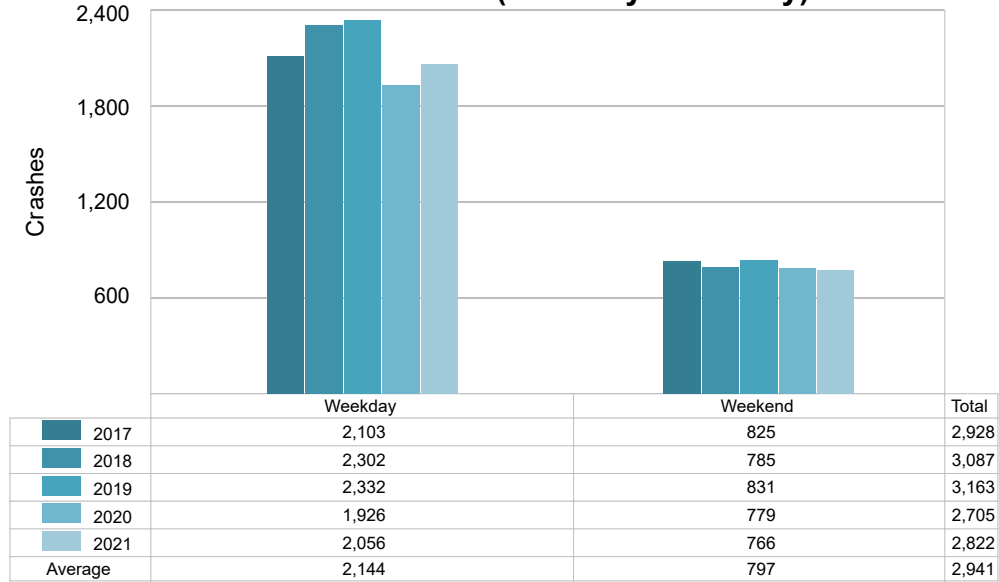


MSP Post 32 - West Branch (continued)

5-Year Trend - Crashes by Weekday and Weekend

Portion of Week	2017		2018		2019		2020		2021	
	Total Crashes	Fatal Crashes	Total Crashes	Fatal Crashes	Total Crashes	Fatal Crashes	Total Crashes	Fatal Crashes	Total Crashes	Fatal Crashes
Weekday	2,103	13	2,302	10	2,332	9	1,926	12	2,056	12
Weekend	825	4	785	4	831	4	779	6	766	5
Total	2,928	17	3,087	14	3,163	13	2,705	18	2,822	17

5-Year Crash Trends by Weekday (Monday - Friday) and Weekend (Saturday & Sunday)

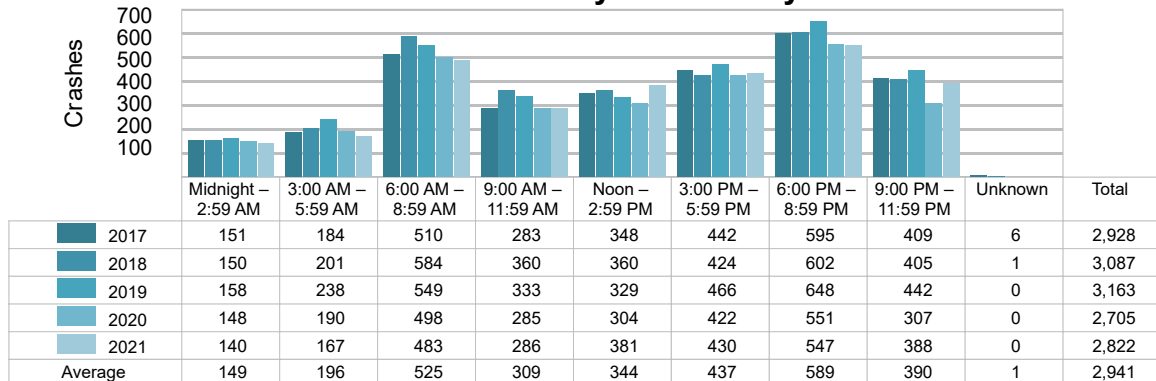


5-Year Trend - Crashes by Time of Day

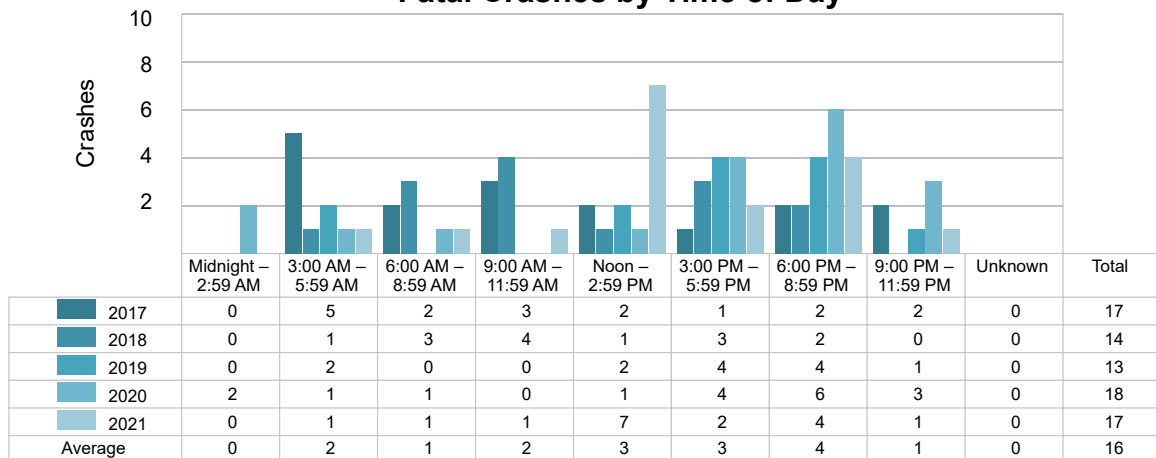
Time of Day	2017		2018		2019		2020		2021	
	Total Crashes	Fatal Crashes	Total Crashes	Fatal Crashes	Total Crashes	Fatal Crashes	Total Crashes	Fatal Crashes	Total Crashes	Fatal Crashes
Midnight – 2:59 AM	151	0	150	0	158	0	148	2	140	0
3:00 AM – 5:59 AM	184	5	201	1	238	2	190	1	167	1
6:00 AM – 8:59 AM	510	2	584	3	549	0	498	1	483	1
9:00 AM – 11:59 AM	283	3	360	4	333	0	285	0	286	1
Noon – 2:59 PM	348	2	360	1	329	2	304	1	381	7
3:00 PM – 5:59 PM	442	1	424	3	466	4	422	4	430	2
6:00 PM – 8:59 PM	595 †	2	602 †	2	648 †	4	551 †	6	547 †	4
9:00 PM – 11:59 PM	409	2	405	0	442	1	307	3	388	1
Unknown	6	0	1	0	0	0	0	0	0	0
Total	2,928	17	3,087	14	3,163	13	2,705	18	2,822	17

Note: † Indicates that the highest number of total crashes reported in the 5-year period occurred in the same time period.

5-Year Trend Crashes by Time of Day



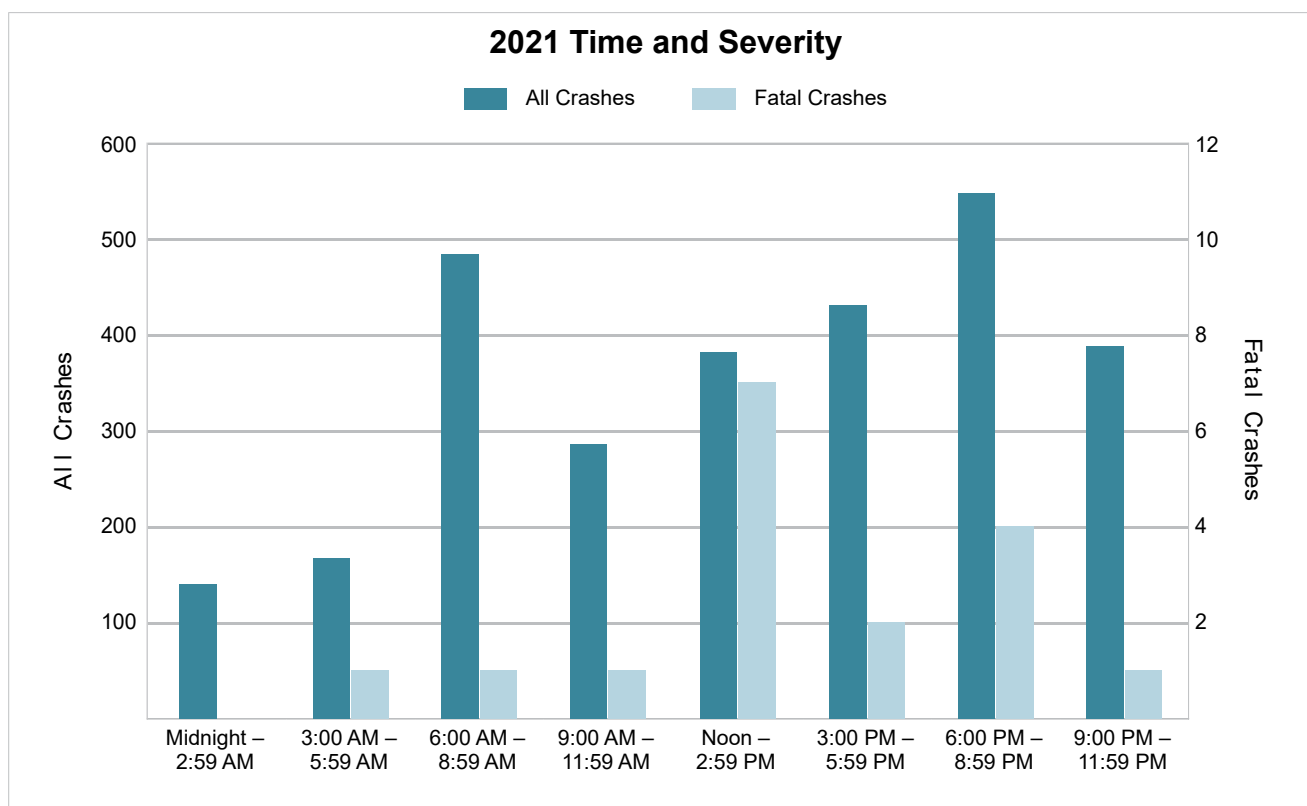
5-Year Trend Fatal Crashes by Time of Day



MSP Post 32 - West Branch (continued)

2021 - Time and Severity

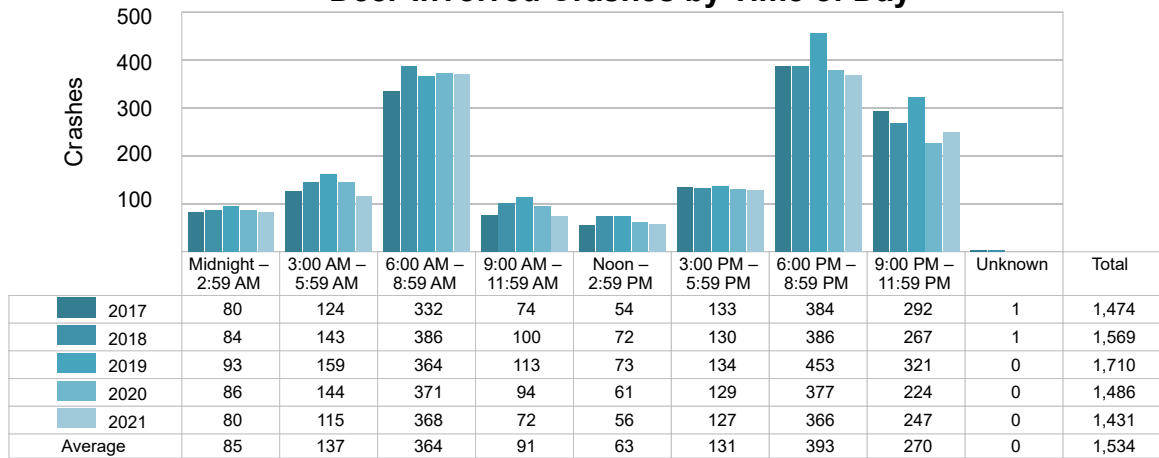
Time of Day	All Crashes		Fatal Crashes		Injury Crashes			PDO Crashes
	Number	% of Total	Number	% of Fatal	A	B	C	Number
Midnight – 2:59 AM	140	5.0	0	0.0	3	7	12	118
3:00 AM – 5:59 AM	167	5.9	1	5.9	6	3	3	154
6:00 AM – 8:59 AM	483	17.1	1	5.9	4	12	18	448
9:00 AM – 11:59 AM	286	10.1	1	5.9	8	10	25	242
Noon – 2:59 PM	381	13.5	7	41.2	14	22	46	292
3:00 PM – 5:59 PM	430	15.2	2	11.8	16	28	44	340
6:00 PM – 8:59 PM	547	19.4	4	23.5	16	25	33	469
9:00 PM – 11:59 PM	388	13.7	1	5.9	8	9	27	343
Unknown	0	0.0	0	0.0	0	0	0	0
Total	2,822	100.0	17	100.0	75	116	208	2,406



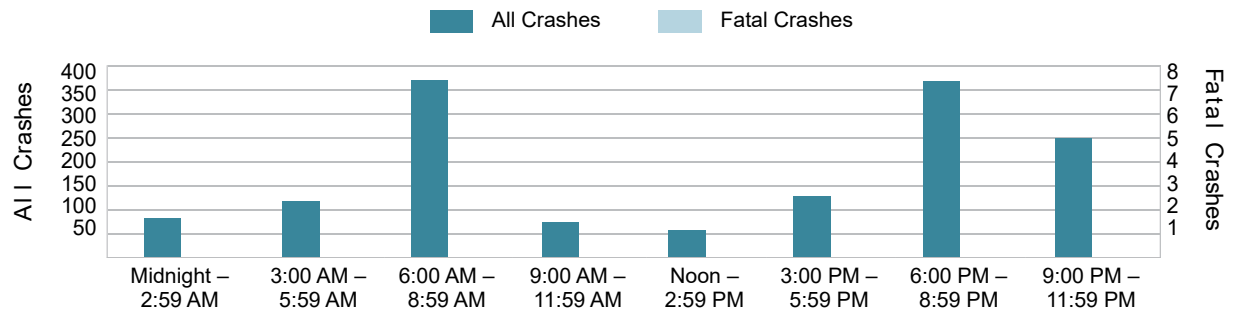
5-Year Trend - Deer-Involved Crashes by Time of Day

Time of Day	2017		2018		2019		2020		2021	
	Total Crashes	Fatal Crashes	Total Crashes	Fatal Crashes	Total Crashes	Fatal Crashes	Total Crashes	Fatal Crashes	Total Crashes	Fatal Crashes
Midnight – 2:59 AM	80	0	84	0	93	0	86	0	80	0
3:00 AM – 5:59 AM	124	0	143	0	159	0	144	0	115	0
6:00 AM – 8:59 AM	332	0	386	0	364	0	371	0	368	0
9:00 AM – 11:59 AM	74	0	100	0	113	0	94	0	72	0
Noon – 2:59 PM	54	0	72	0	73	0	61	0	56	0
3:00 PM – 5:59 PM	133	0	130	0	134	0	129	0	127	0
6:00 PM – 8:59 PM	384	0	386	1	453	1	377	0	366	0
9:00 PM – 11:59 PM	292	0	267	0	321	0	224	1	247	0
Unknown	1	0	1	0	0	0	0	0	0	0
Total	1,474	0	1,569	1	1,710	1	1,486	1	1,431	0

5-Year Trend Deer-Involved Crashes by Time of Day



2021 Time and Severity of Deer-Involved Crashes



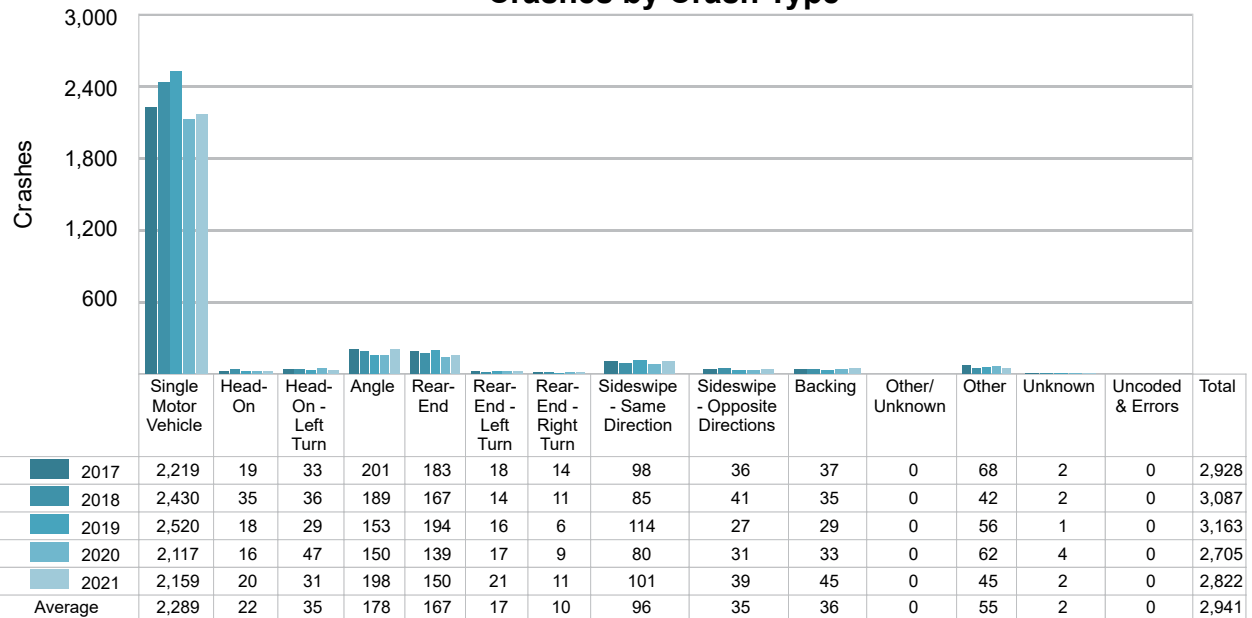
There were no fatal deer-involved crashes in MSP Post 32 - West Branch in 2021.

MSP Post 32 - West Branch (continued)

5-Year Trend - Crashes by Crash Type

Crash Type	2017		2018		2019		2020		2021	
	Total Crashes	Fatal Crashes	Total Crashes	Fatal Crashes	Total Crashes	Fatal Crashes	Total Crashes	Fatal Crashes	Total Crashes	Fatal Crashes
Single Motor Vehicle	2,219	10	2,430	7	2,520	7	2,117	12	2,159	7
Head-On	19	2	35	3	18	3	16	2	20	4
Head-On - Left Turn	33	0	36	1	29	0	47	1	31	1
Angle	201	1	189	1	153	0	150	2	198	0
Rear-End	183	3	167	2	194	2	139	0	150	2
Rear-End - Left Turn	18	0	14	0	16	0	17	0	21	0
Rear-End - Right Turn	14	0	11	0	6	0	9	0	11	0
Sideswipe - Same Direction	98	0	85	0	114	0	80	1	101	0
Sideswipe - Opposite Directions	36	0	41	0	27	0	31	0	39	2
Backing	37	0	35	0	29	0	33	0	45	0
Other/Unknown	0	0	0	0	0	0	0	0	0	0
Other	68	1	42	0	56	1	62	0	45	1
Unknown	2	0	2	0	1	0	4	0	2	0
Uncoded & Errors	0	0	0	0	0	0	0	0	0	0
Total	2,928	17	3,087	14	3,163	13	2,705	18	2,822	17

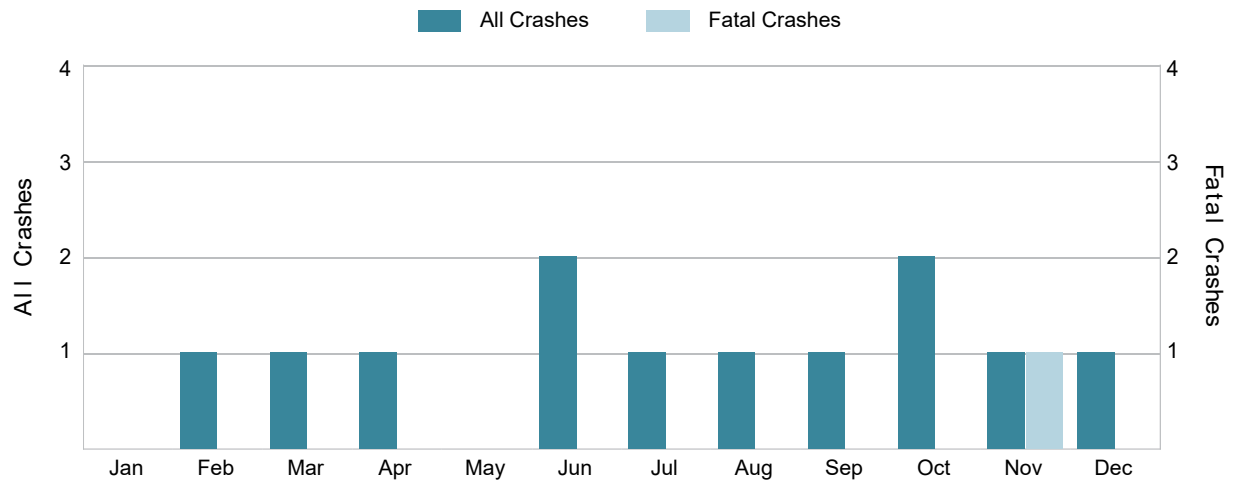
5-Year Trend Crashes by Crash Type



5-Year Trend - Pedestrian-Involved Crashes by Month

Month	2017		2018		2019		2020		2021	
	Total Crashes	Fatal Crashes	Total Crashes	Fatal Crashes	Total Crashes	Fatal Crashes	Total Crashes	Fatal Crashes	Total Crashes	Fatal Crashes
January	0	0	0	0	1	0	0	0	0	0
February	2	0	2	0	1	0	2	0	1	0
March	0	0	2	0	0	0	0	0	1	0
April	2	0	1	0	0	0	0	0	1	0
May	2	0	0	0	1	0	1	0	0	0
June	0	0	2	0	2	0	1	0	2	0
July	1	0	3	0	1	0	1	0	1	0
August	1	0	2	0	1	1	4	1	1	0
September	1	0	2	0	0	0	4	0	1	0
October	2	0	2	0	3	1	1	0	2	0
November	3	0	1	0	4	0	3	1	1	1
December	0	0	1	0	3	1	1	0	1	0
Total	14	0	18	0	17	3	18	2	12	1

2021 Pedestrian-Involved Crashes by Month

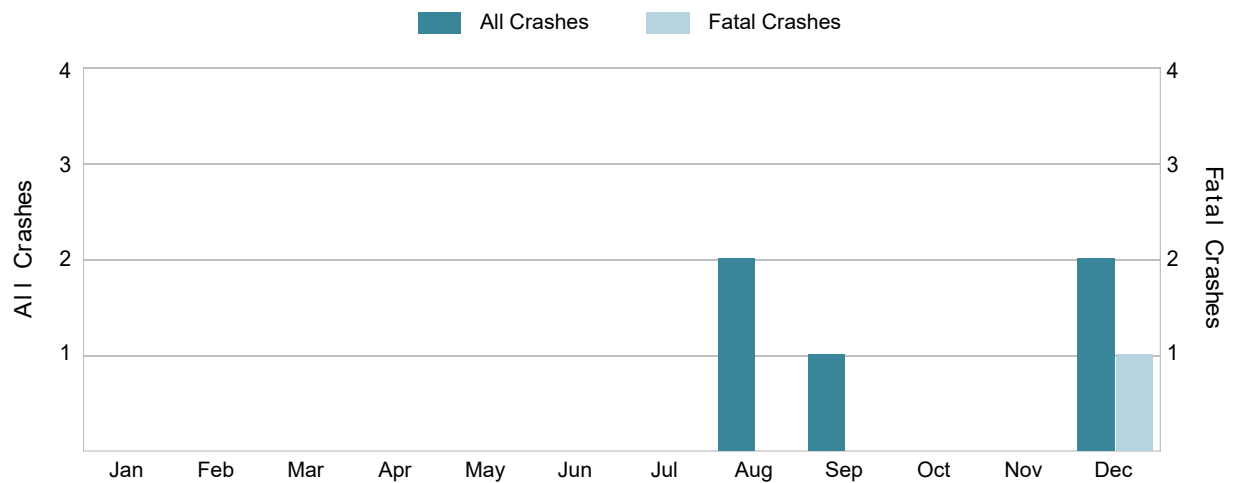


MSP Post 32 - West Branch (continued)

5-Year Trend - Bicyclist-Involved Crashes by Month

Month	2017		2018		2019		2020		2021	
	Total Crashes	Fatal Crashes	Total Crashes	Fatal Crashes	Total Crashes	Fatal Crashes	Total Crashes	Fatal Crashes	Total Crashes	Fatal Crashes
January	0	0	0	0	0	0	0	0	0	0
February	0	0	0	0	0	0	0	0	0	0
March	0	0	0	0	0	0	0	0	0	0
April	0	0	0	0	1	0	0	0	0	0
May	0	0	1	0	1	0	1	0	0	0
June	4	1	3	0	0	0	2	0	0	0
July	0	0	1	0	0	0	0	0	0	0
August	1	0	1	0	1	0	1	1	2	0
September	1	0	1	0	0	0	1	0	1	0
October	1	0	0	0	0	0	0	0	0	0
November	1	0	0	0	0	0	1	0	0	0
December	0	0	0	0	0	0	0	0	2	1
Total	8	1	7	0	3	0	6	1	5	1

2021 Bicyclist-Involved Crashes by Month



2021 - Reported Motor Vehicle Crashes by County

County	Crashes												
	Total	Fatal	Injury	Property Damage	Inter-State	US Route	State Route	Local Street	Alcohol-Involved	Drug-Involved	Deer-Involved	Pedestrian-Involved	Bicyclist-Involved
Arenac	711	4	90	617	94	163	78	376	32	20	384	0	0
Gladwin	710	2	80	628	0	0	279	425	33	6	396	9	1
Iosco	610	4	125	481	0	166	147	295	29	9	256	2	3
Ogemaw	791	7	104	680	137	0	234	413	21	3	395	1	1
Total	2,822	17	399	2,406	231	329	738	1,509	115	38	1,431	12	5

2021 - People in Reported Motor Vehicle Crashes by County

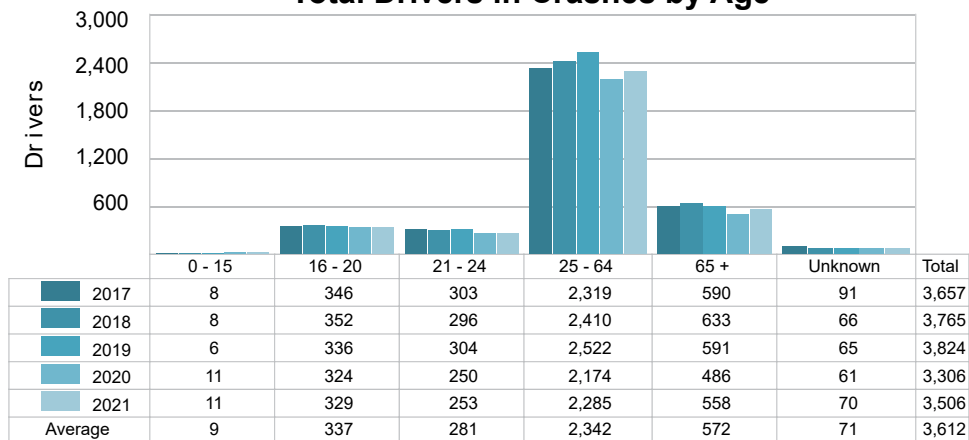
County	People					
	Fatalities	Suspected Serious Injuries	Suspected Minor Injuries	Possible Injuries	No Injuries	Uncoded & Errors
Arenac	4	45	49	99	849	15
Gladwin	2	36	64	47	904	22
Iosco	5	41	62	148	778	25
Ogemaw	7	43	52	126	1,095	16
Total	18	165	227	420	3,626	78

MSP Post 32 - West Branch (continued)

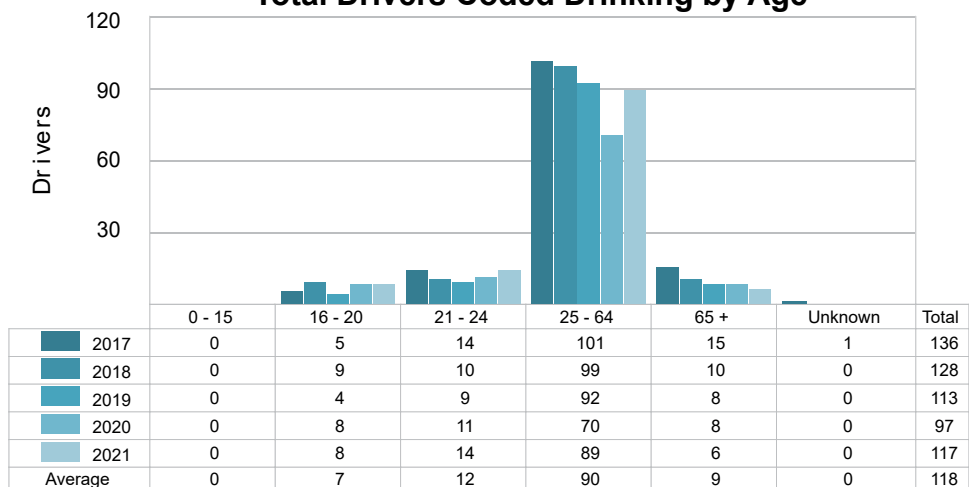
5-Year Trend - Drivers in Crashes Coded Drinking by Driver Age

Driver Age	2017		2018		2019		2020		2021	
	Total Drivers in Crashes	Total Drivers Coded Drinking	Total Drivers in Crashes	Total Drivers Coded Drinking	Total Drivers in Crashes	Total Drivers Coded Drinking	Total Drivers in Crashes	Total Drivers Coded Drinking	Total Drivers in Crashes	Total Drivers Coded Drinking
0 - 15	8	0	8	0	6	0	11	0	11	0
16 - 20	346	5	352	9	336	4	324	8	329	8
21 - 24	303	14	296	10	304	9	250	11	253	14
25 - 64	2,319	101	2,410	99	2,522	92	2,174	70	2,285	89
65 +	590	15	633	10	591	8	486	8	558	6
Unknown	91	1	66	0	65	0	61	0	70	0
Total	3,657	136	3,765	128	3,824	113	3,306	97	3,506	117

5-Year Trend Total Drivers in Crashes by Age



5-Year Trend Total Drivers Coded Drinking by Age



2021 - Bodily Alcohol Concentration (BAC) Results Among All Vehicle Drivers in Alcohol-Involved Crashes by Age

Age Group	Drivers				BAC Result Range for Drivers Coded Drinking				
	Total Drivers in Alcohol-Involved Crashes	Total Drivers Tested in all Crashes	Total Drivers Coded Drinking, Tested	Total Drivers Coded Drinking	BAC = 0.00	BAC 0.01 g/dL to 0.07 g/dL	BAC 0.08 g/dL to 0.16 g/dL	BAC 0.17 g/dL and Above	BAC Not Reported
0 - 15	0	0	0	0	0	0	0	0	0
16 - 20	9	7	6	8	0	1	5	0	2
21 - 24	15	16	10	14	0	1	5	2	6
25 - 64	98	83	63	89	0	1	21	23	44
65 +	9	9	4	6	0	1	2	0	3
Unknown	4	0	0	0	0	0	0	0	0
Total	135	115	83	117	0	4	33	25	55

Notes: BAC measured in grams (g) per deciliter (dL).

BAC may not be reported if drivers are not tested or if the results are not available immediately (as in the case of a blood test).

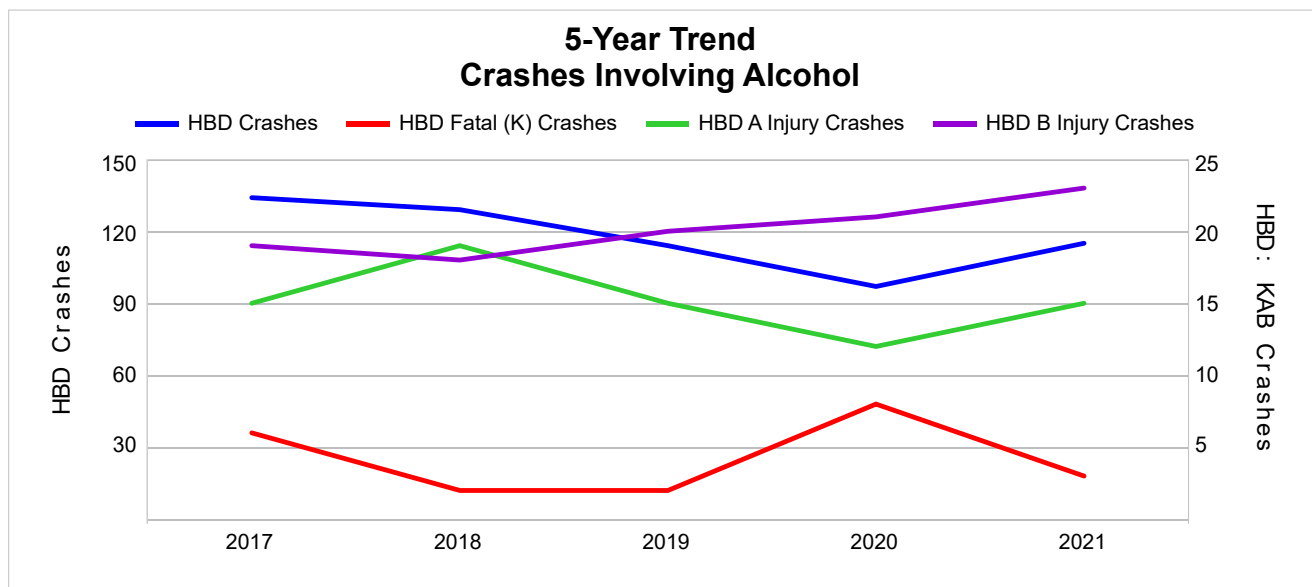
A driver may be coded by the officer as drinking even though no test is administered.

5-Year Trend - Crashes Involving Alcohol

Year	All Crashes	HBD Crashes	% HBD	Fatal Crashes	HBD Fatal Crashes	% HBD	A Injury Crashes	HBD A Injury Crashes	% HBD	B Injury Crashes	HBD B Injury Crashes	% HBD
2017	2,928	134	4.6	17	6	35.3	73	15	20.5	140	19	13.6
2018	3,087	129	4.2	14	2	14.3	68	19	27.9	132	18	13.6
2019	3,163	114	3.6	13	2	15.4	89	15	16.9	128	20	15.6
2020	2,705	97	3.6	18	8	44.4	62	12	19.4	145	21	14.5
2021	2,822	115	4.1	17	3	17.6	75	15	20.0	116 *	23 **	19.8 **

Note: * Indicates that the most recent year is the lowest number or percentage reported in the 5-year period in that column.

** Indicates that the most recent year is the highest number or percentage reported in the 5-year period in that column.



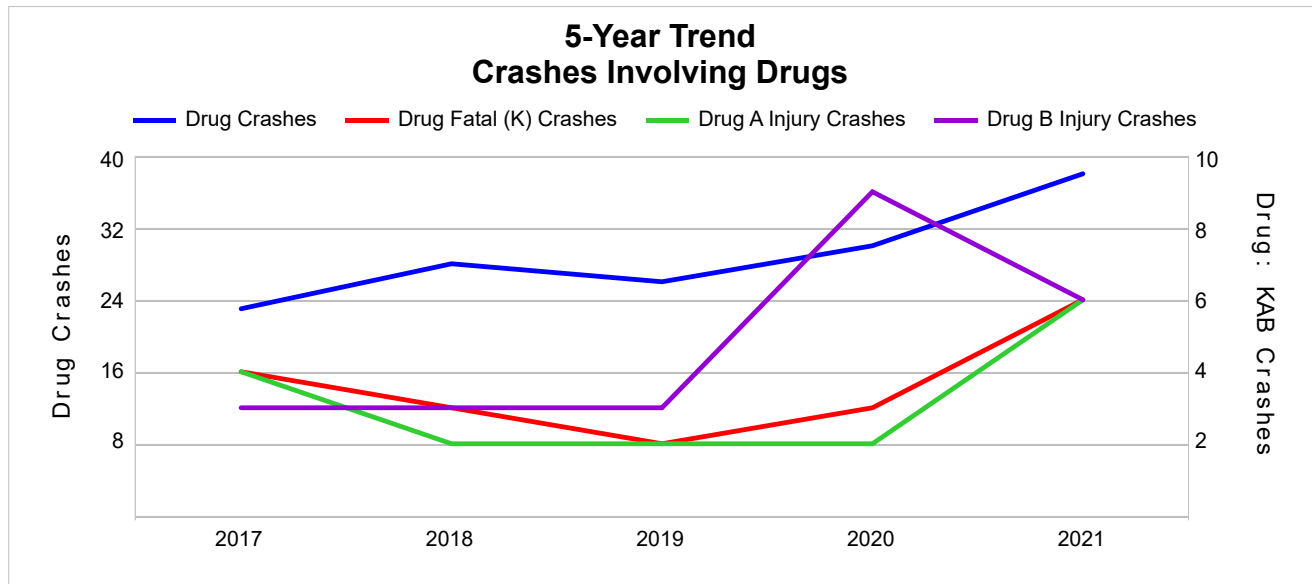
Note: Had-Been-Drinking (HBD)

5-Year Trend - Crashes Involving Drugs

Year	All Crashes	Drug Crashes	% Drug	Fatal Crashes	Drug Fatal Crashes	% Drug	A Injury Crashes	Drug A Injury Crashes	% Drug	B Injury Crashes	Drug B Injury Crashes	% Drug
2017	2,928	23	0.8	17	4	23.5	73	4	5.5	140	3	2.1
2018	3,087	28	0.9	14	3	21.4	68	2	2.9	132	3	2.3
2019	3,163	26	0.8	13	2	15.4	89	2	2.2	128	3	2.3
2020	2,705	30	1.1	18	3	16.7	62	2	3.2	145	9	6.2
2021	2,822	38 **	1.3 **	17	6 **	35.3 **	75	6 **	8.0 **	116 *	6	5.2

Note: * Indicates that the most recent year is the lowest number or percentage reported in the 5-year period in that column.

** Indicates that the most recent year is the highest number or percentage reported in the 5-year period in that column.

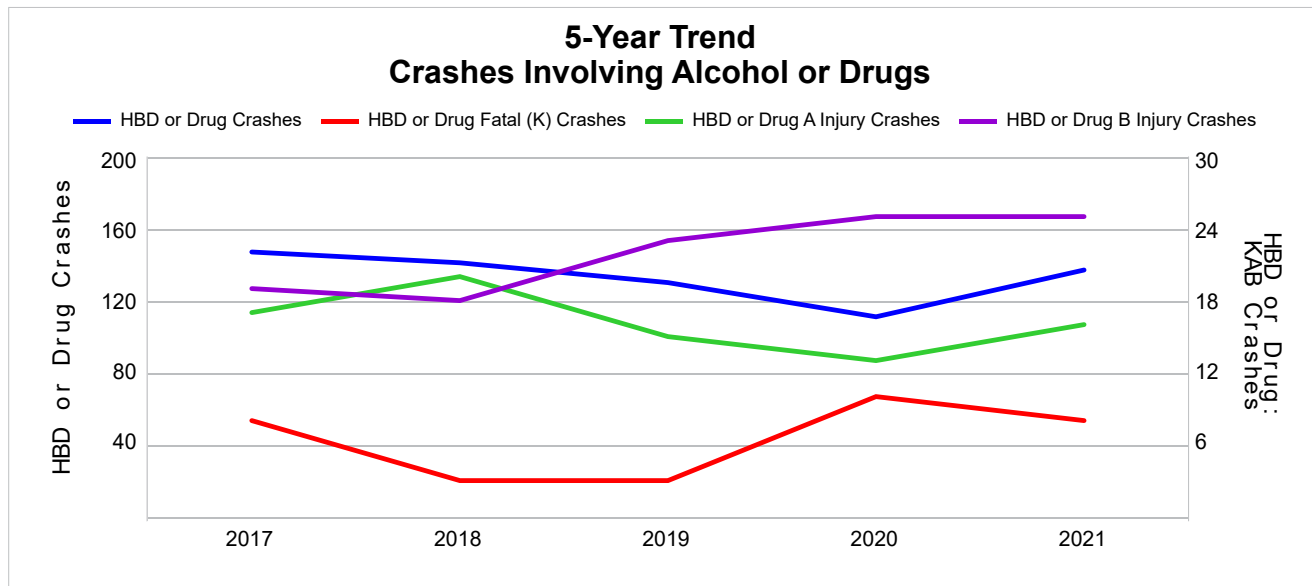


5-Year Trend - Crashes Involving Alcohol or Drugs

Year	All Crashes	HBD or Drug Crashes	% HBD or Drug	Fatal Crashes	HBD or Drug Fatal Crashes	% HBD or Drug	A Injury Crashes	HBD or Drug A Injury Crashes	% HBD or Drug	B Injury Crashes	HBD or Drug B Injury Crashes	% HBD or Drug
2017	2,928	147	5.0	17	8	47.1	73	17	23.3	140	19	13.6
2018	3,087	141	4.6	14	3	21.4	68	20	29.4	132	18	13.6
2019	3,163	130	4.1	13	3	23.1	89	15	16.9	128	23	18.0
2020	2,705	111	4.1	18	10	55.6	62	13	21.0	145	25	17.2
2021	2,822	137	4.9	17	8	47.1	75	16	21.3	116 *	25	21.6 **

Note: * Indicates that the most recent year is the lowest number or percentage reported in the 5-year period in that column.

** Indicates that the most recent year is the highest number or percentage reported in the 5-year period in that column.



Note: Had-Been-Drinking (HBD)

2021 - Restraints Worn Among Vehicle Drivers and Injured Passengers by Vehicle Type

Vehicle Type	Total Occupants			Fatalities			A - Suspected Serious			B - Suspected Minor			C - Possible Injury			No Injury		
	Total	Used Restraint	%	Total	Used Restraint	%	Total	Used Restraint	%	Total	Used Restraint	%	Total	Used Restraint	%	Total	Used Restraint	%
Passenger Car, SUV, Van	2,556	2,425	94.9	9	3	33.3	54	46	85.2	101	86	85.1	205	196	95.6	2,156	2,094	97.1
Motor Home	5	5	100.0	0	0	0.0	0	0	0.0	0	0	0.0	2	2	100.0	3	3	100.0
Pickup Truck	897	834	93.0	5	3	60.0	22	13	59.1	25	23	92.0	72	65	90.3	750	730	97.3
Small Truck Under 10,000 lbs. GVWR	18	17	94.4	0	0	0.0	1	1	100.0	2	1	50.0	0	0	0.0	15	15	100.0
Motorcycle	35	20	57.1	0	0	0.0	10	4	40.0	13	8	61.5	7	4	57.1	5	4	80.0
Moped/Goped	2	2	100.0	0	0	0.0	0	0	0.0	1	1	100.0	1	1	100.0	0	0	0.0
Go-Cart/Golf Cart	1	0	0.0	0	0	0.0	0	0	0.0	0	0	0.0	0	0	0.0	1	0	0.0
Snowmobile	2	2	100.0	1	1	100.0	0	0	0.0	0	0	0.0	0	0	0.0	1	1	100.0
Off-Road Vehicle (ORV)/All-Terrain Vehicle (ATV)	16	10	62.5	0	0	0.0	2	1	50.0	5	2	40.0	1	0	0.0	8	7	87.5
Other (non-registered farm equipment, construction equipment, snow plows, etc.)	20	13	65.0	0	0	0.0	0	0	0.0	0	0	0.0	0	0	0.0	18	13	72.2
Truck/Bus (over 10,000 lbs. GVWR/ 8+ occupants/ hazmat placard)	68	60	88.2	1	0	0.0	1	0	0.0	1	0	0.0	5	5	100.0	56	55	98.2
Uncoded & Errors	18	0	0.0	0	0	0.0	0	0	0.0	0	0	0.0	0	0	0.0	0	0	0.0
Total	3,638	3,388	93.1	16	7	43.8	90	65	72.2	148	121	81.8	293	273	93.2	3,013	2,922	97.0

Note: Restraint Use includes shoulder belt only used, lap belt only used, both lap and shoulder belts used, child restraint used, restraint failure, and helmet worn.

2021 - Restraints Worn Among Vehicle Drivers and Injured Passengers by Age

Age Group	Total Occupants			Fatalities			A - Suspected Serious			B - Suspected Minor			C - Possible Injury			No Injury		
	Total	Used Restraint	%	Total	Used Restraint	%	Total	Used Restraint	%	Total	Used Restraint	%	Total	Used Restraint	%	Total	Used Restraint	%
0 - 15	35	31	88.6	2	1	50.0	3	3	100.0	15	12	80.0	9	9	100.0	6	6	100.0
16 - 20	349	335	96.0	1	0	0.0	10	8	80.0	13	10	76.9	37	34	91.9	288	283	98.3
21 - 24	261	243	93.1	2	1	50.0	7	6	85.7	10	8	80.0	25	22	88.0	214	206	96.3
25 - 64	2,352	2,224	94.6	7	2	28.6	51	31	60.8	87	69	79.3	182	169	92.9	2,020	1,953	96.7
65 +	571	555	97.2	4	3	75.0	19	17	89.5	23	22	95.7	40	39	97.5	484	474	97.9
Unknown	70	0	0.0	0	0	0.0	0	0	0.0	0	0	0.0	0	0	0.0	1	0	0.0
Total	3,638	3,388	93.1	16	7	43.8	90	65	72.2	148	121	81.8	293	273	93.2	3,013	2,922	97.0

Note: Restraint Use includes shoulder belt only used, lap belt only used, both lap and shoulder belts used, child restraint used, restraint failure, and helmet worn.

5-Year Trend - Restraint Use Among Drivers

Restraint Use	2017			2018			2019			2020			2021		
	Drivers	Fatal Drivers	Injured Drivers	Drivers	Fatal Drivers	Injured Drivers	Drivers	Fatal Drivers	Injured Drivers	Drivers	Fatal Drivers	Injured Drivers	Drivers	Fatal Drivers	Injured Drivers
No Belts Available	21	0	6	27	1	6	15	0	3	14	0	2	13	0	5
Shoulder Belt Only Used	18	0	1	19	1	5	35	0	4	21	0	3	20	0	2
Lap Belt Only Used	9	0	0	7	0	0	4	0	0	13	0	3	10	0	1
Both Lap & Shoulder Belt Used	3,312	6	303	3,432	4	353	3,521	2	343	3,000	3	293	3,215	4	323
No Belts Used	48	2	24	41	5	14	37	2	22	28	4	14	41	5	22
Child Restraint Used - Forward Facing	0	0	0	2	0	1	0	0	0	0	0	0	0	0	0
Child Restraint Not Used, Unavailable or Improper Use	0	0	0	0	0	0	0	0	0	0	0	0	0	0	0
Child Restraint Used - Rear Facing	0	0	0	0	0	0	0	0	0	0	0	0	0	0	0
Child Restraint Used - Booster Seat	1	0	0	0	0	0	0	0	0	0	0	0	0	0	0
Restraint Failure	1	0	0	0	0	0	0	0	0	0	0	0	0	0	0
Restraint Use Unknown	149	3	16	158	1	17	144	2	16	165	2	19	165	3	16
Helmet Worn	29	1	19	23	2	16	30	2	21	39	4	30	26	1	18
Helmet Not Worn	12	1	11	12	0	11	20	0	15	21	1	17	13	0	12
Helmet Use Unknown	3	0	1	1	0	1	5	1	3	4	0	2	3	0	3
Uncoded & Errors	54	0	0	43	0	1	13	0	0	1	0	0	0	0	0
Total	3,657	13	381	3,765	14	425	3,824	9	427	3,306	14	383	3,506	13	402

5-Year Trend - Restraint Use Among Drivers Coded Drinking

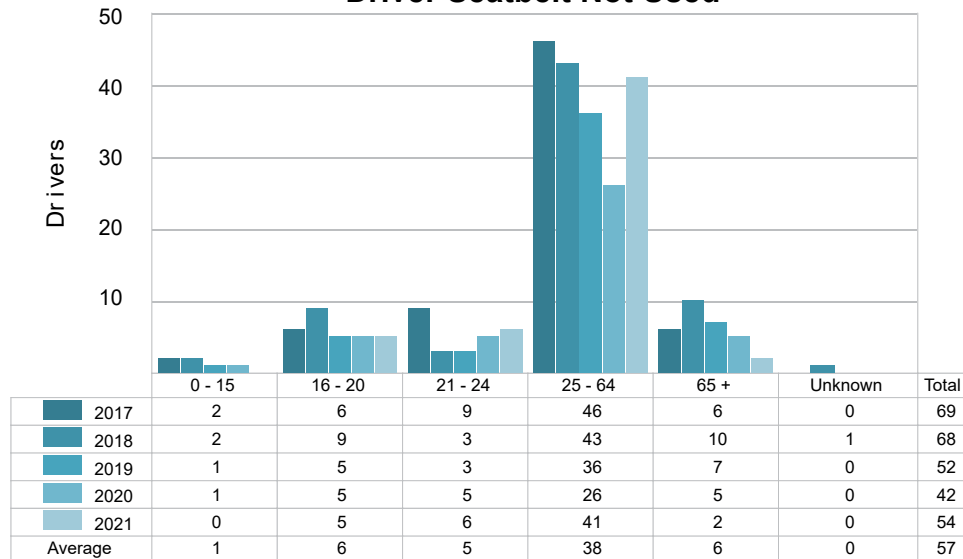
Restraint Use	2017			2018			2019			2020			2021		
	Drivers	Fatal Drivers	Injured Drivers	Drivers	Fatal Drivers	Injured Drivers	Drivers	Fatal Drivers	Injured Drivers	Drivers	Fatal Drivers	Injured Drivers	Drivers	Fatal Drivers	Injured Drivers
No Belts Available	2	0	0	1	1	0	0	0	0	0	0	0	0	0	0
Shoulder Belt Only Used	1	0	0	0	0	0	2	0	0	1	0	1	0	0	0
Lap Belt Only Used	1	0	0	0	0	0	0	0	0	1	0	0	1	0	0
Both Lap & Shoulder Belt Used	85	0	22	82	0	27	79	0	31	54	0	16	75	0	34
No Belts Used	11	2	8	17	1	9	8	0	4	10	4	5	14	1	9
Child Restraint Used - Forward Facing	0	0	0	0	0	0	0	0	0	0	0	0	0	0	0
Child Restraint Not Used, Unavailable or Improper Use	0	0	0	0	0	0	0	0	0	0	0	0	0	0	0
Child Restraint Used - Rear Facing	0	0	0	0	0	0	0	0	0	0	0	0	0	0	0
Child Restraint Used - Booster Seat	0	0	0	0	0	0	0	0	0	0	0	0	0	0	0
Restraint Failure	0	0	0	0	0	0	0	0	0	0	0	0	0	0	0
Restraint Use Unknown	31	2	8	23	0	6	18	1	7	21	0	10	20	0	4
Helmet Worn	1	0	1	3	0	2	1	0	1	3	2	1	2	0	2
Helmet Not Worn	4	1	3	2	0	2	4	0	3	7	1	6	4	0	4
Helmet Use Unknown	0	0	0	0	0	0	1	0	0	0	0	0	1	0	1
Uncoded & Errors	0	0	0	0	0	0	0	0	0	0	0	0	0	0	0
Total	136	5	42	128	2	46	113	1	46	97	7	39	117	1	54

5-Year Trend - Seatbelt Not Used Among Drivers by Age

Age Group	2017			2018			2019			2020			2021		
	Drivers	Fatal Drivers	Injured Drivers	Drivers	Fatal Drivers	Injured Drivers	Drivers	Fatal Drivers	Injured Drivers	Drivers	Fatal Drivers	Injured Drivers	Drivers	Fatal Drivers	Injured Drivers
0 - 15	2	0	1	2	0	2	1	0	1	1	0	0	0	0	0
16 - 20	6	0	2	9	1	2	5	0	5	5	0	3	5	1	2
21 - 24	9	1	6	3	1	1	3	0	3	5	1	2	6	1	3
25 - 64	46	1	18	43	3	13	36	1	15	26	2	9	41	3	22
65 +	6	0	3	10	1	2	7	1	1	5	1	2	2	0	0
Unknown	0	0	0	1	0	0	0	0	0	0	0	0	0	0	0
Total	69	2	30	68	6	20	52	2	25	42	4	16	54	5	27

Note: Seatbelt Not Used includes no belts available or no belts used.

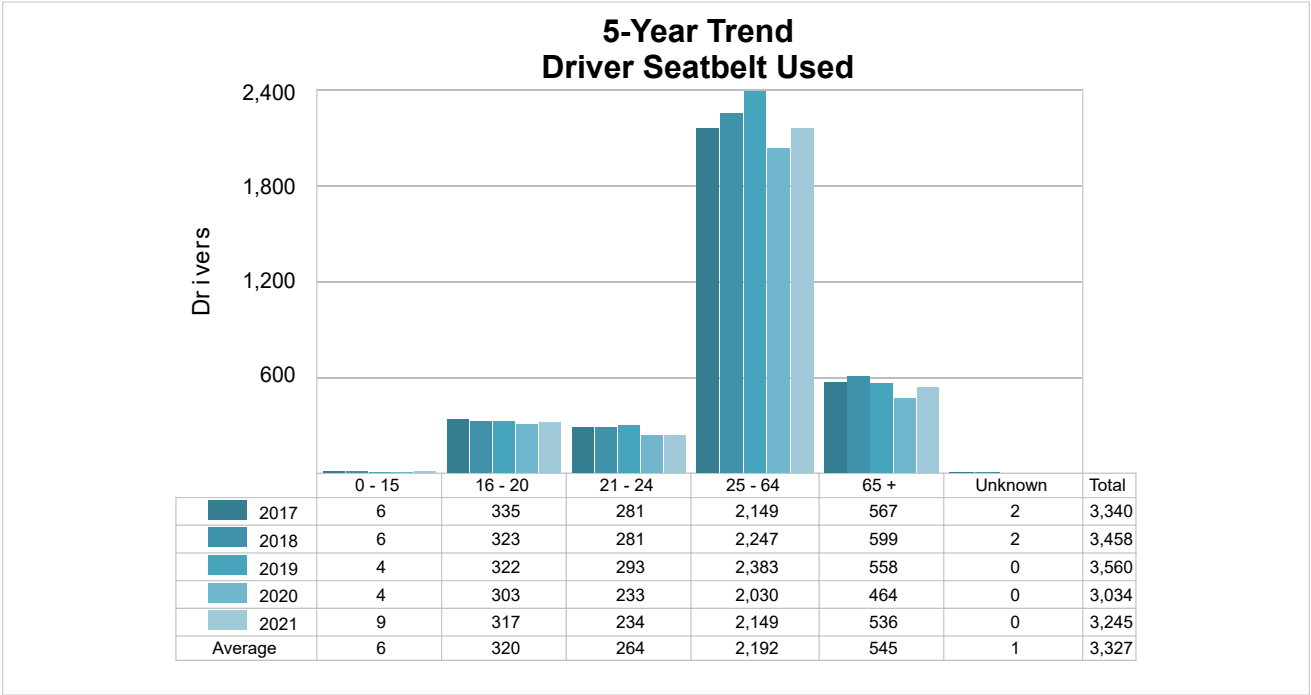
5-Year Trend Driver Seatbelt Not Used



5-Year Trend - Seatbelt Used Among Drivers by Age

Age Group	2017			2018			2019			2020			2021		
	Drivers	Fatal Drivers	Injured Drivers	Drivers	Fatal Drivers	Injured Drivers	Drivers	Fatal Drivers	Injured Drivers	Drivers	Fatal Drivers	Injured Drivers	Drivers	Fatal Drivers	Injured Drivers
0 - 15	6	0	0	6	0	3	4	0	3	4	0	1	9	0	3
16 - 20	335	0	44	323	0	45	322	0	48	303	0	45	317	0	35
21 - 24	281	1	23	281	0	23	293	0	31	233	0	21	234	1	28
25 - 64	2,149	2	188	2,247	2	217	2,383	1	203	2,030	2	178	2,149	1	200
65 +	567	3	49	599	3	70	558	1	62	464	1	54	536	2	60
Unknown	2	0	0	2	0	0	0	0	0	0	0	0	0	0	0
Total	3,340	6	304	3,458	5	358	3,560	2	347	3,034	3	299	3,245	4	326

Note: Seatbelt Used includes shoulder belt only used, lap belt only used, both lap and shoulder belts used, and restraint failure.



MSP Post 32 - West Branch (continued)

5-Year Trend - Drivers in Crashes by Hazardous Action

Hazardous Action	2017		2018		2019		2020		2021	
	Total Drivers in Crashes	Drivers in Fatal Crashes	Total Drivers in Crashes	Drivers in Fatal Crashes	Total Drivers in Crashes	Drivers in Fatal Crashes	Total Drivers in Crashes	Drivers in Fatal Crashes	Total Drivers in Crashes	Drivers in Fatal Crashes
None	2,271	10	2,358	8	2,506	11	2,183	8	2,221	11
Speed Too Fast	397	6	490	6	465	2	298	4	395	2
Speed Too Slow	3	0	3	0	2	0	2	0	2	0
Failed to Yield	229	1	227	0	207	0	191	3	224	1
Disregard Traffic Control	31	0	33	0	21	0	27	0	31	0
Drove Wrong Way	0	0	1	0	1	0	1	0	2	0
Drove Left of Center	18	1	33	3	15	1	15	1	31	4
Improper Passing	19	0	13	0	26	0	13	0	28	0
Improper Lane Use	33	0	35	0	35	1	32	1	34	1
Improper Turn	19	0	27	0	21	0	18	2	25	0
Improper/No Signal	5	0	3	0	2	0	6	0	0	0
Improper Backing	45	0	33	0	31	0	26	0	38	0
Unable to Stop in Assured Clear Distance	186	1	166	0	173	2	141	0	161	2
Other	108	1	91	1	91	0	100	1	101	2
Unknown	62	2	54	0	71	1	69	1	93	7
Reckless Driving	17	0	28	1	23	0	25	1	20	0
Careless/Negligent Driving	131	3	130	2	124	2	158	2	100	0
Uncoded & Errors	83	2	40	0	10	0	1	0	0	0
Total	3,657	27	3,765	21	3,824	20	3,306	24	3,506	30

Office of Highway Safety Planning

Physical Address:
7150 Harris Drive
Dimondale, Michigan 48821

Mailing Address:
P.O. Box 30634
Lansing, Michigan 48909

Find us on the web:
MichiganTrafficCrashFacts.org
mtcf-info@umich.edu

