



2021

**MTCF**  
Michigan Traffic  
Crash Facts

# Michigan Traffic Crash Facts

## Reporting Criteria

Please pay particular attention to the wording when interpreting the three levels of data gathered for this report.

### Crash

The Crash Level analyzes data related to crash events and returns one result per crash.

Examples: Time, weather, and location.

### Units

The Units Level analyzes the experience of the units in the crash and returns one result per vehicle, driver, pedestrian, bicyclist, or train.

Examples: Vehicle type, driver condition, and unit events.

### People

The People Level analyzes the experience of the people involved in the crash and returns one result per occupant/person/party.

Examples: Age, injury severity, and seat belt or helmet use.

### **KABCO Injury Indicator:**

K = Killed

A = Suspected Serious Injury

B = Suspected Minor Injury

C = Possible Injury

O = No Injury

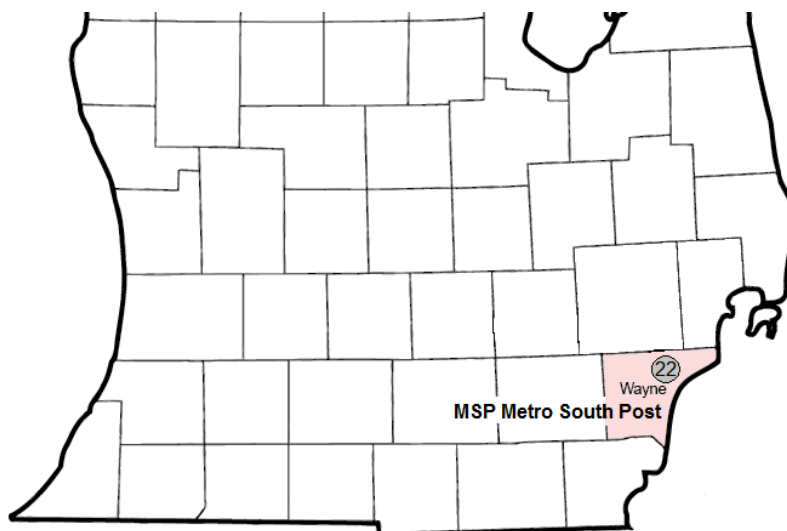
Property Damage Only (PDO)



## Michigan State Police (MSP) Post 22 - Metro South

### 2021 Traffic Crash Data & 2017-2021 5-Year Trends

MSP Post 22 - Metro South is comprised of Wayne county. Trend tables for this report are based on those counties.



### Sources:

The crashes in this report occurred on public roadways in Michigan and resulted in injuries, fatalities, or property damage (with \$1,000 as a reporting threshold). The information was gathered from Michigan Traffic Crash Report Forms (UD-10) submitted by local police departments, sheriff's offices, and the Michigan State Police. Other related information was obtained from the departments of Transportation, State, and Community Health.

## MSP Post 22 - Metro South

- There were 50,490 crashes in Post 22 during 2021. [Page 1]
- A total of 219 fatalities resulted from 202 fatal crashes in 2021 in Post 22. [Page 1]
- There were 16,662 injuries and 11,830 injury crashes. [Page 1]
- There were 38,458 property damage only crashes (no fatalities or injuries). [Page 1]
- October had the highest number of crashes (4,943). [Pages 1-2]
- March had the highest number of fatal crashes (26) and fatalities (28). [Pages 1-2]
- June had the highest number of injury crashes (1,146) while July had the highest number of injuries (1,663). [Page 1]
- October had the highest number of property damage only crashes (3,784). [Page 1]
- Of all vehicles involved in fatal crashes, 29 (9.1%) were motorcycles. [Page 1]
- Friday was the day of the week with the highest number of crashes (8,217) and Sunday had the highest number of fatal crashes (42). [Pages 2-3]
- The 3:00 PM – 5:59 PM time period had the highest number of crashes (12,184). This holds true for every year between 2017 and 2021. The Midnight – 2:59 AM time period had the highest number of fatal crashes (51). [Pages 5-6]
- During the period from 2017 to 2021, the highest number of deer crashes occurred in 2019 (513). The 6:00 PM – 8:59 PM time period consistently had the highest number of deer-involved crashes during the five-year period. There were 0 fatal crashes involving deer in 2021. [Page 7]
- Wayne County (100.0%) had the highest number of crashes in Post 22 in 2021. [Page 11]
- Wayne County (100.0%) had the highest number of fatalities in Post 22 in 2021. [Page 11]
- The highest number of drivers in crashes (107,402) occurred during 2017 and the highest number of drivers coded drinking in crashes (1,481) occurred during 2021 within the five year period between 2017 and 2021. [Page 12]
- A total of 1,491 crashes involved alcohol in 2021. [Page 13]
- Alcohol-involved fatal crashes were the highest in 2018 during the five-year period from 2017 to 2021 at 58. [Page 13]
- A total of 408 crashes, 24 fatal crashes, and 47 suspected injury crashes involved drugs in 2021. [Page 14]
- There were 62,312 drivers wearing seatbelts and 919 drivers not wearing seatbelts in crashes in 2021. Of the 919 drivers not wearing seatbelts, 31 (3.4%) were killed and 338 (36.8%) were injured. [Pages 17-19]
- The most common hazardous action coded for drivers in 2021 in all crashes was unknown (14,104), while the most common hazardous actions coded for drivers in fatal crashes were unknown and reckless driving (40). [Page 20]

## 2021 - Crashes and Injury by Month

Month	Crashes				People	
	Total	Fatal	Injury	Property Damage Only (PDO)	Fatalities	Injuries
January	3,266	8	727	2,531	9	1,019
February	3,757	16	762	2,979	16	1,027
March	3,635	26	888	2,721	28	1,276
April	3,797	21	967	2,809	24	1,336
May	4,392	22	1,083	3,287	25	1,501
June	4,546	16	1,146	3,384	19	1,659
July	4,432	17	1,129	3,286	18	1,663
August	4,660	16	1,141	3,503	16	1,604
September	4,588	18	1,102	3,468	19	1,564
October	4,943	18	1,141	3,784	20	1,606
November	4,537	16	945	3,576	16	1,301
December	3,937	8	799	3,130	9	1,106
<b>Total</b>	<b>50,490</b>	<b>202</b>	<b>11,830</b>	<b>38,458</b>	<b>219</b>	<b>16,662</b>

## 2021 - Driver Statistics

Age Group	MSP Post 22 - Metro South			Driver Rates	
	2019 Population*	Licensed Drivers	Drivers in Crashes	Per 10k Population	Per 10k Licensed
0 - 15	365,688	4,859	155	4.2	319.0
16 - 20	106,588	64,910	7,865	737.9	1,211.7
21 - 24	89,018	70,720	8,312	933.7	1,175.3
25 - 64	911,519	744,498	54,108	593.6	726.8
65 +	276,530	232,753	7,637	276.2	328.1
Unknown	0	0	19,869	--	--
<b>Total</b>	<b>1,749,343</b>	<b>1,117,740</b>	<b>97,946</b>	<b>559.9</b>	<b>876.3</b>

\*2021 Population of Michigan Counties (by single-year of age) not yet available from U.S. Census Bureau.

## 2021 - Vehicles in Crashes

Vehicle Type	Motor Vehicles		Fatal Crashes		Injury Crashes	PDO Crashes
	Number of Vehicles	% of Total	Number	% of Total	Number	Number
Passenger Car, SUV, Van	80,777	82.5	228	71.5	19,741	60,808
Motor Home	129	0.1	0	0.0	20	109
Pickup Truck	6,271	6.4	16	5.0	1,297	4,958
Small Truck Under 10,000 lbs. GVWR	358	0.4	0	0.0	68	290
Motorcycle	612	0.6	29	9.1	433	150
Moped/Goped	133	0.1	7	2.2	105	21
Go-Cart/Golf Cart	3	0.0	0	0.0	1	2
Snowmobile	0	0.0	0	0.0	0	0
Off-Road Vehicle (ORV)/All-Terrain Vehicle (ATV)	60	0.1	7	2.2	37	16
Other (non-registered farm equipment, construction equipment, snow plows, etc.)	330	0.3	0	0.0	71	259
Truck/Bus (over 10,000 lbs. GVWR/8+ occupants/hazmat placard)	3,287	3.4	18	5.6	583	2,686
Uncoded & Errors	5,986	6.1	14	4.4	837	5,135
<b>Total</b>	<b>97,946</b>	<b>100.0</b>	<b>319</b>	<b>100.0</b>	<b>23,193</b>	<b>74,434</b>

## MSP Post 22 - Metro South (continued)

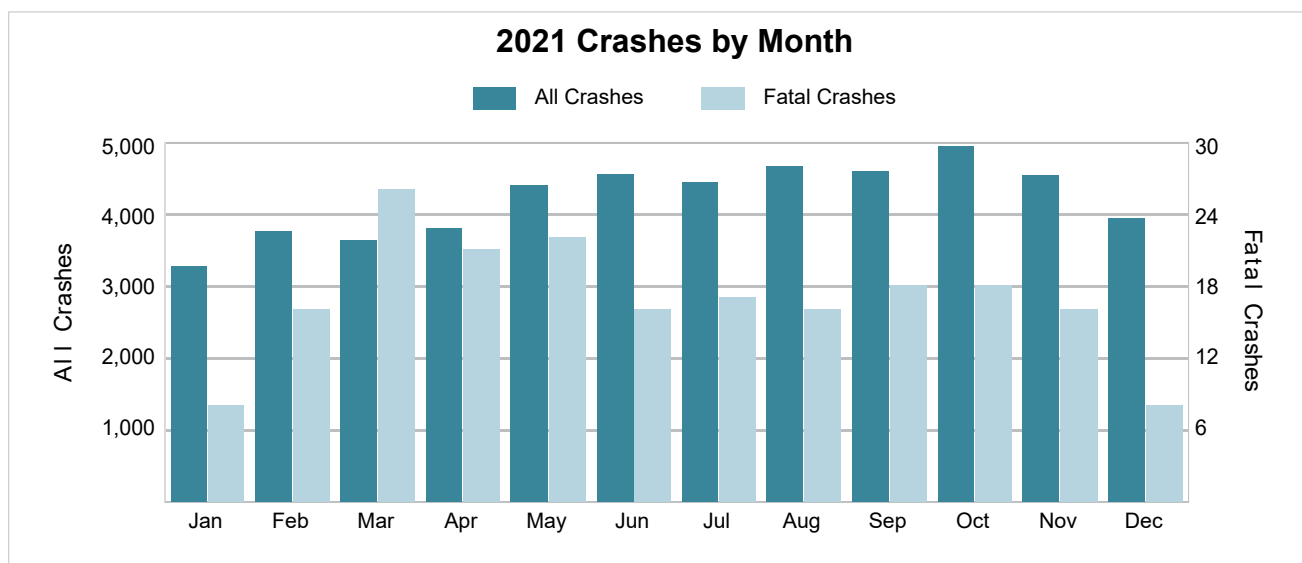
### 5-Year Trend - Crashes by Month

Month	2017		2018		2019		2020		2021	
	Total Crashes	Fatal Crashes	Total Crashes	Fatal Crashes	Total Crashes	Fatal Crashes	Total Crashes	Fatal Crashes	Total Crashes	Fatal Crashes
January	4,161	15	5,041	3	4,706	13	4,260	9	3,266	8
February	3,793	12	4,654	9	4,137	5	4,134	10	3,757	16
March	5,085	11	4,111	4	4,145	17	2,748	14	3,635	26
April	4,081	13	3,988	11	4,002	12	1,773	15	3,797	21
May	4,911	16	4,911	15	4,652	19	2,996	22	4,392	22
June	4,784	17	4,635	21	4,577	18	3,864	21	4,546	16
July	4,162	8	4,175	16	4,182	11	4,469	36	4,432	17
August	4,317	11	4,283	20	4,291	10	4,373	30	4,660	16
September	4,499	11	4,460	20	4,467	12	4,030	26	4,588	18
October	4,894	8	5,059	9	4,980	17	4,106	18	4,943	18
November	4,595	8	4,411	12	4,660	8	3,573	17	4,537	16
December	5,638	15	4,344	13	4,236	9	3,691	16	3,937	8
<b>Total</b>	<b>54,920</b>	<b>145</b>	<b>54,072</b>	<b>153</b>	<b>53,035</b>	<b>151</b>	<b>44,017</b>	<b>234</b>	<b>50,490</b>	<b>202</b>

### 5-Year Trend - Crashes by Day of Week

Day	2017		2018		2019		2020		2021	
	Total Crashes	Fatal Crashes	Total Crashes	Fatal Crashes	Total Crashes	Fatal Crashes	Total Crashes	Fatal Crashes	Total Crashes	Fatal Crashes
Monday	8,258	20	8,343	24	7,942	20	5,930	32	7,056	29
Tuesday	8,248	23	8,166	22	7,921	18	6,064	28	7,079	25
Wednesday	8,502	11	8,028	14	8,099	14	6,883	29	7,296	24
Thursday	8,444	18	8,084	21	7,894	25	6,389	30	7,234	24
Friday	8,922 †	23	8,691 †	22	8,265 †	17	7,088 †	28	8,217 †	20
Saturday	6,804	30	7,017	27	6,976	34	6,305	43	7,301	38
Sunday	5,742	20	5,743	23	5,938	23	5,358	44	6,307	42
<b>Total</b>	<b>54,920</b>	<b>145</b>	<b>54,072</b>	<b>153</b>	<b>53,035</b>	<b>151</b>	<b>44,017</b>	<b>234</b>	<b>50,490</b>	<b>202</b>

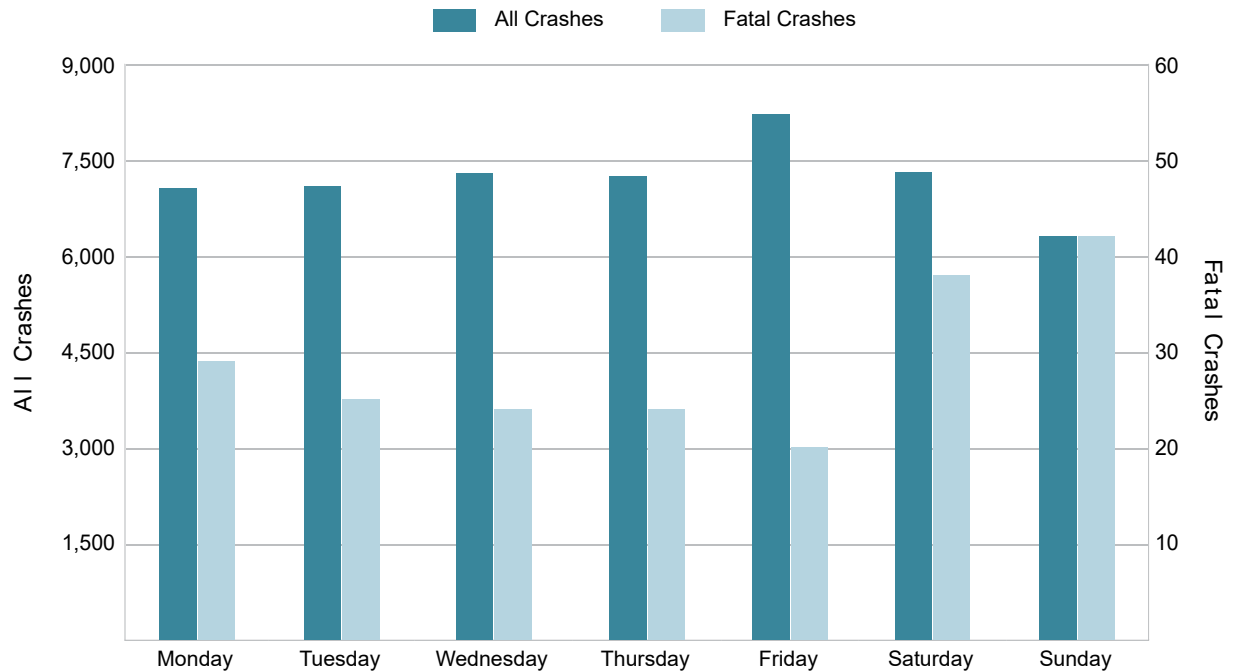
Note: † Indicates that the highest number of total crashes reported in the 5-year period occurred on the same day of the week.



## 2021 - Crashes by Day of Week

Day	All Crashes		Fatal Crashes		Injury Crashes			PDO Crashes
	Number	% of Total	Fatal	% of Fatal	A	B	C	Number
Monday	7,056	14.0	29	14.4	121	469	1,019	5,418
Tuesday	7,079	14.0	25	12.4	109	444	990	5,511
Wednesday	7,296	14.5	24	11.9	126	431	1,091	5,624
Thursday	7,234	14.3	24	11.9	128	498	1,087	5,497
Friday	8,217	16.3	20	9.9	141	504	1,191	6,361
Saturday	7,301	14.5	38	18.8	163	563	1,098	5,439
Sunday	6,307	12.5	42	20.8	175	493	989	4,608
<b>Total</b>	<b>50,490</b>	<b>100.0</b>	<b>202</b>	<b>100.0</b>	<b>963</b>	<b>3,402</b>	<b>7,465</b>	<b>38,458</b>

## 2021 Day of Week and Severity

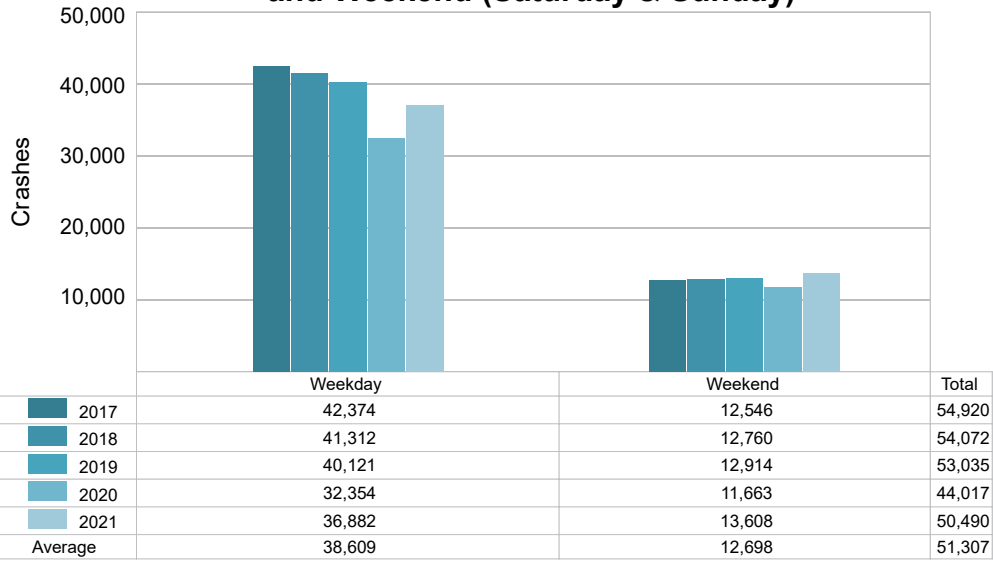


## MSP Post 22 - Metro South (continued)

### 5-Year Trend - Crashes by Weekday and Weekend

Portion of Week	2017		2018		2019		2020		2021	
	Total Crashes	Fatal Crashes	Total Crashes	Fatal Crashes	Total Crashes	Fatal Crashes	Total Crashes	Fatal Crashes	Total Crashes	Fatal Crashes
Weekday	42,374	95	41,312	103	40,121	94	32,354	147	36,882	122
Weekend	12,546	50	12,760	50	12,914	57	11,663	87	13,608	80
<b>Total</b>	<b>54,920</b>	<b>145</b>	<b>54,072</b>	<b>153</b>	<b>53,035</b>	<b>151</b>	<b>44,017</b>	<b>234</b>	<b>50,490</b>	<b>202</b>

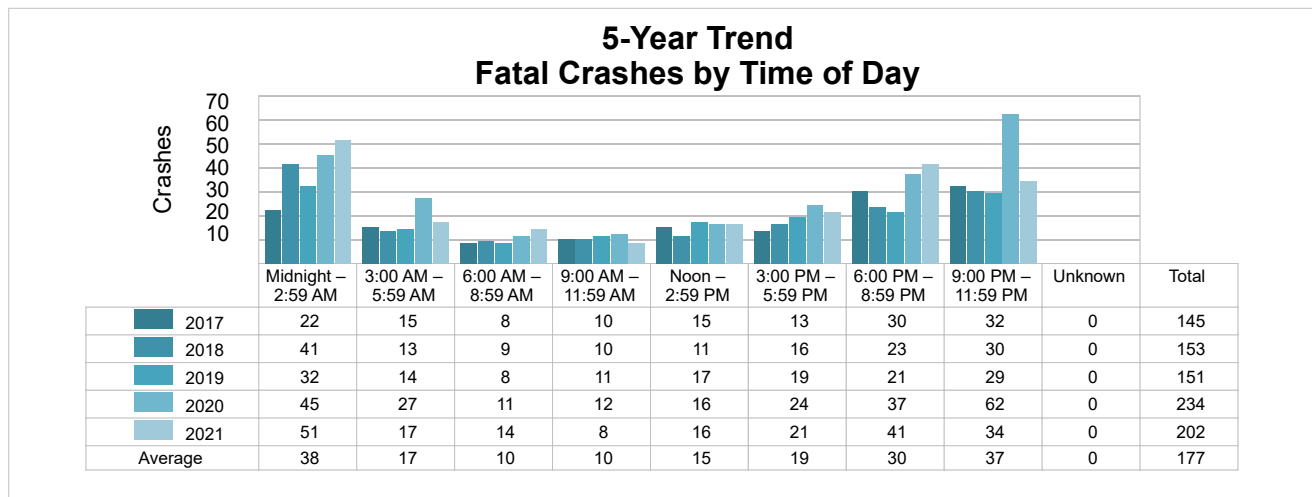
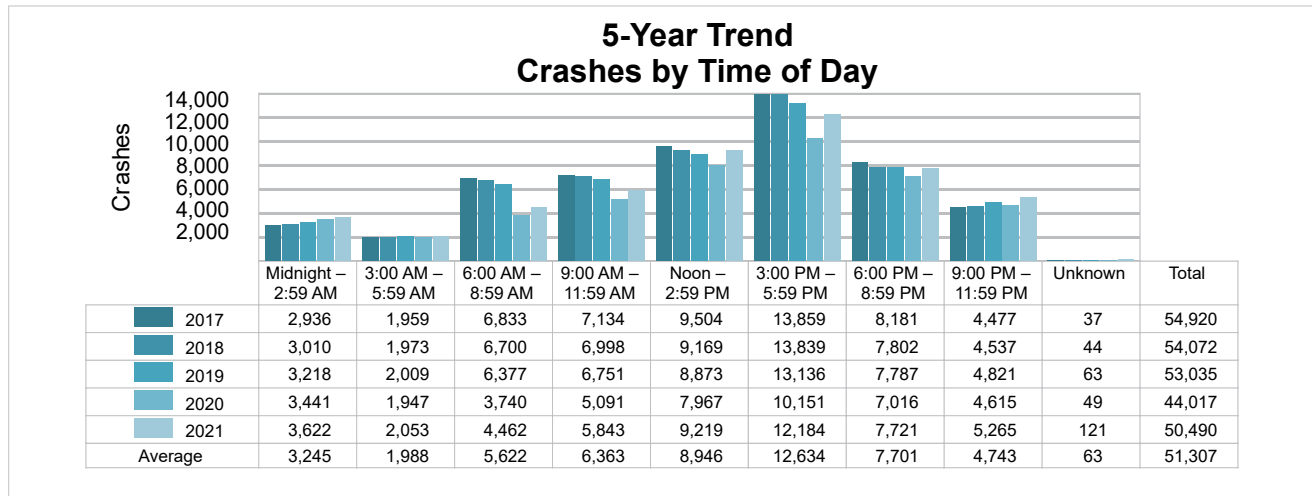
### 5-Year Crash Trends by Weekday (Monday - Friday) and Weekend (Saturday & Sunday)



## 5-Year Trend - Crashes by Time of Day

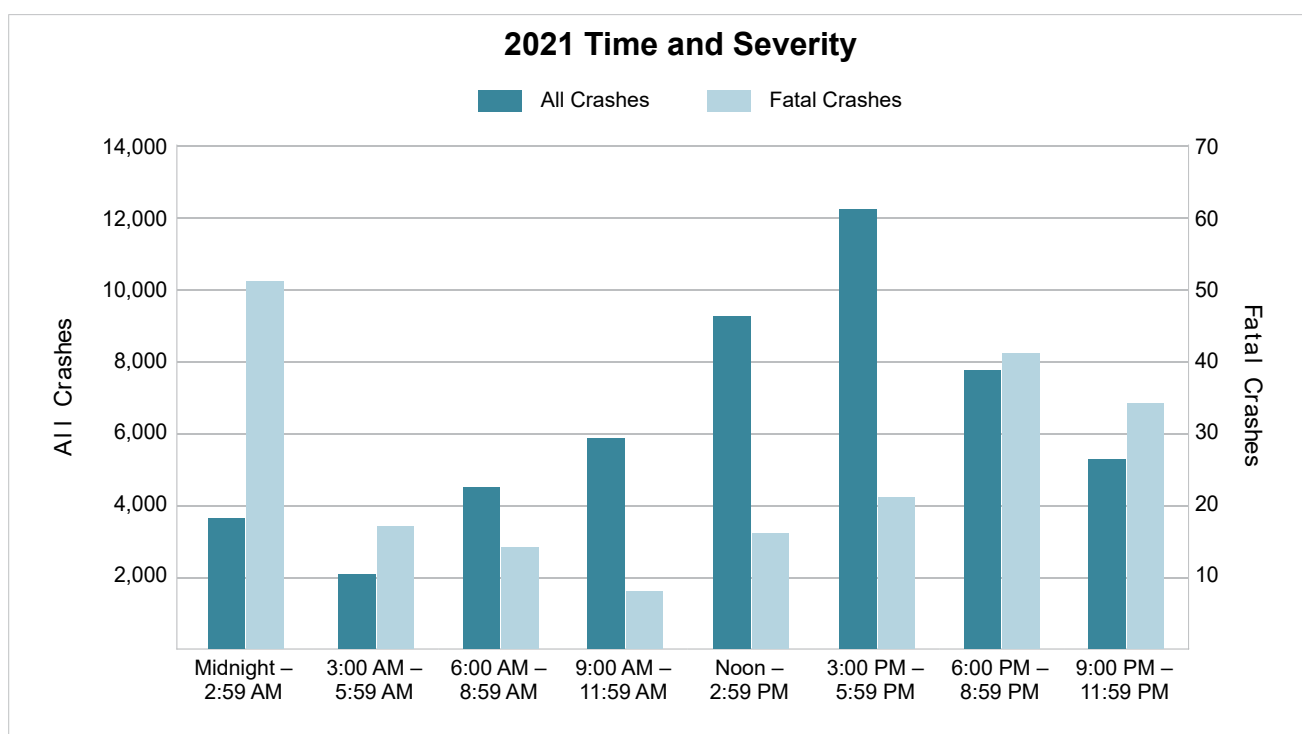
Time of Day	2017		2018		2019		2020		2021	
	Total Crashes	Fatal Crashes	Total Crashes	Fatal Crashes	Total Crashes	Fatal Crashes	Total Crashes	Fatal Crashes	Total Crashes	Fatal Crashes
Midnight – 2:59 AM	2,936	22	3,010	41	3,218	32	3,441	45	3,622	51
3:00 AM – 5:59 AM	1,959	15	1,973	13	2,009	14	1,947	27	2,053	17
6:00 AM – 8:59 AM	6,833	8	6,700	9	6,377	8	3,740	11	4,462	14
9:00 AM – 11:59 AM	7,134	10	6,998	10	6,751	11	5,091	12	5,843	8
Noon – 2:59 PM	9,504	15	9,169	11	8,873	17	7,967	16	9,219	16
3:00 PM – 5:59 PM	13,859 †	13	13,839 †	16	13,136 †	19	10,151 †	24	12,184 †	21
6:00 PM – 8:59 PM	8,181	30	7,802	23	7,787	21	7,016	37	7,721	41
9:00 PM – 11:59 PM	4,477	32	4,537	30	4,821	29	4,615	62	5,265	34
Unknown	37	0	44	0	63	0	49	0	121	0
<b>Total</b>	<b>54,920</b>	<b>145</b>	<b>54,072</b>	<b>153</b>	<b>53,035</b>	<b>151</b>	<b>44,017</b>	<b>234</b>	<b>50,490</b>	<b>202</b>

Note: † Indicates that the highest number of total crashes reported in the 5-year period occurred in the same time period.



## 2021 - Time and Severity

Time of Day	All Crashes		Fatal Crashes		Injury Crashes			PDO Crashes
	Number	% of Total	Number	% of Fatal	A	B	C	Number
Midnight – 2:59 AM	3,622	7.2	51	25.2	119	306	601	2,545
3:00 AM – 5:59 AM	2,053	4.1	17	8.4	63	141	270	1,562
6:00 AM – 8:59 AM	4,462	8.8	14	6.9	57	244	563	3,584
9:00 AM – 11:59 AM	5,843	11.6	8	4.0	85	371	811	4,568
Noon – 2:59 PM	9,219	18.3	16	7.9	148	595	1,394	7,066
3:00 PM – 5:59 PM	12,184	24.1	21	10.4	170	728	1,787	9,478
6:00 PM – 8:59 PM	7,721	15.3	41	20.3	151	601	1,190	5,738
9:00 PM – 11:59 PM	5,265	10.4	34	16.8	168	414	841	3,808
Unknown	121	0.2	0	0.0	2	2	8	109
<b>Total</b>	<b>50,490</b>	<b>100.0</b>	<b>202</b>	<b>100.0</b>	<b>963</b>	<b>3,402</b>	<b>7,465</b>	<b>38,458</b>



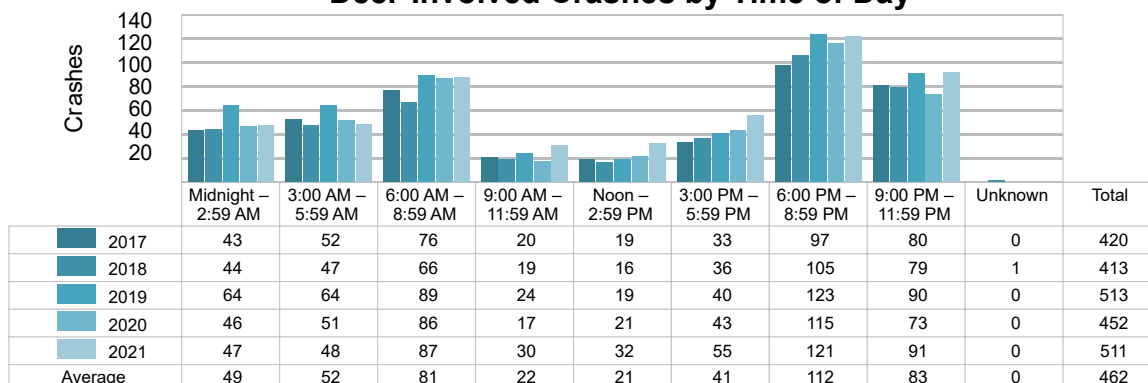


## 5-Year Trend - Deer-Involved Crashes by Time of Day

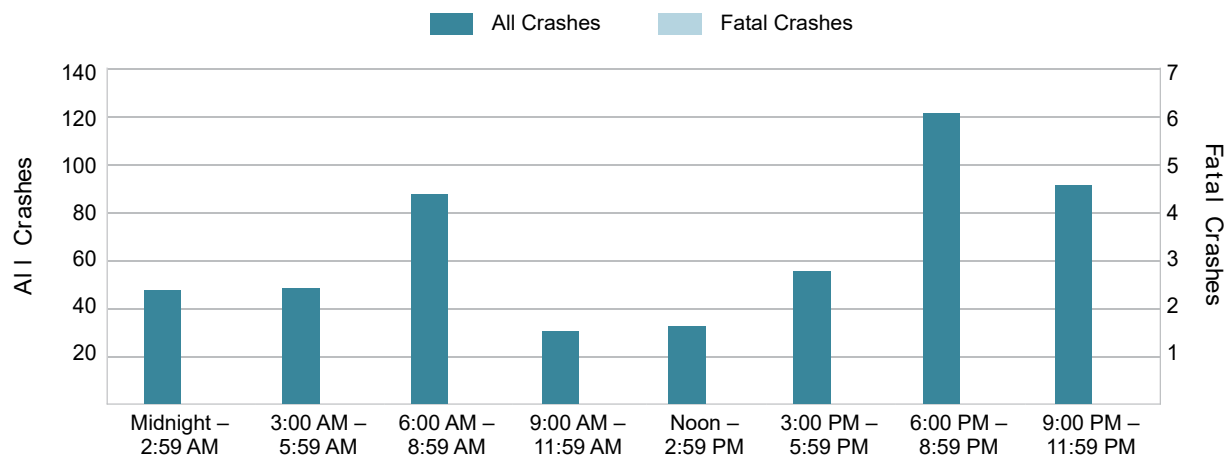
Time of Day	2017		2018		2019		2020		2021	
	Total Crashes	Fatal Crashes	Total Crashes	Fatal Crashes	Total Crashes	Fatal Crashes	Total Crashes	Fatal Crashes	Total Crashes	Fatal Crashes
Midnight – 2:59 AM	43	0	44	0	64	0	46	0	47	0
3:00 AM – 5:59 AM	52	0	47	0	64	0	51	0	48	0
6:00 AM – 8:59 AM	76	0	66	0	89	0	86	0	87	0
9:00 AM – 11:59 AM	20	0	19	0	24	0	17	0	30	0
Noon – 2:59 PM	19	0	16	0	19	0	21	0	32	0
3:00 PM – 5:59 PM	33	0	36	0	40	0	43	0	55	0
6:00 PM – 8:59 PM	97 †	0	105 †	0	123 †	0	115 †	0	121 †	0
9:00 PM – 11:59 PM	80	0	79	0	90	0	73	1	91	0
Unknown	0	0	1	0	0	0	0	0	0	0
<b>Total</b>	<b>420</b>	<b>0</b>	<b>413</b>	<b>0</b>	<b>513</b>	<b>0</b>	<b>452</b>	<b>1</b>	<b>511</b>	<b>0</b>

Note: † Indicates that the highest number of total crashes reported in the 5-year period occurred in the same time period.

## 5-Year Trend Deer-Involved Crashes by Time of Day



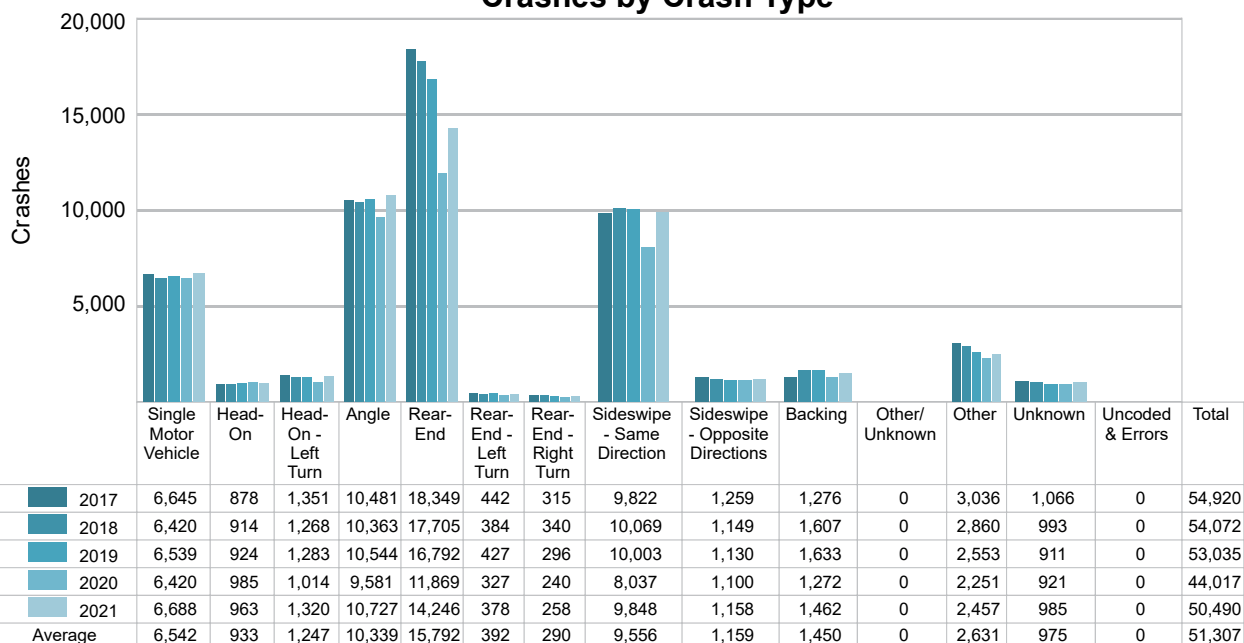
## 2021 Time and Severity of Deer-Involved Crashes



There were no fatal deer-involved crashes in MSP Post 22 - Metro South in 2021.

## 5-Year Trend - Crashes by Crash Type

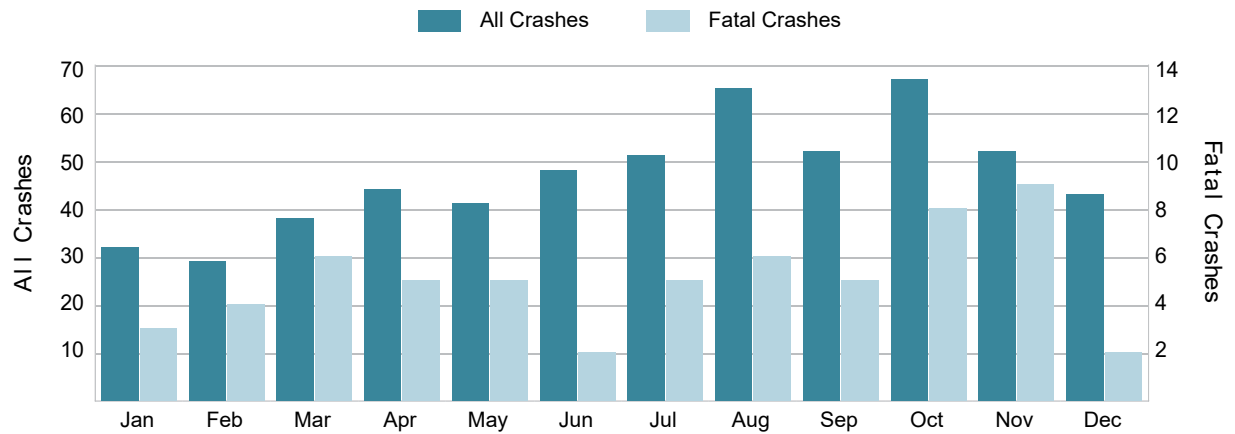
Crash Type	2017		2018		2019		2020		2021	
	Total Crashes	Fatal Crashes	Total Crashes	Fatal Crashes	Total Crashes	Fatal Crashes	Total Crashes	Fatal Crashes	Total Crashes	Fatal Crashes
Single Motor Vehicle	6,645	65	6,420	82	6,539	69	6,420	108	6,688	91
Head-On	878	15	914	7	924	10	985	10	963	20
Head-On - Left Turn	1,351	4	1,268	3	1,283	5	1,014	8	1,320	8
Angle	10,481	28	10,363	24	10,544	38	9,581	55	10,727	34
Rear-End	18,349	13	17,705	11	16,792	11	11,869	22	14,246	17
Rear-End - Left Turn	442	0	384	0	427	0	327	1	378	1
Rear-End - Right Turn	315	0	340	0	296	0	240	0	258	0
Sideswipe - Same Direction	9,822	7	10,069	6	10,003	5	8,037	10	9,848	13
Sideswipe - Opposite Directions	1,259	2	1,149	1	1,130	0	1,100	5	1,158	0
Backing	1,276	0	1,607	0	1,633	0	1,272	0	1,462	0
Other/Unknown	0	0	0	0	0	0	0	0	0	0
Other	3,036	10	2,860	17	2,553	13	2,251	12	2,457	16
Unknown	1,066	1	993	2	911	0	921	3	985	2
Uncoded & Errors	0	0	0	0	0	0	0	0	0	0
<b>Total</b>	<b>54,920</b>	<b>145</b>	<b>54,072</b>	<b>153</b>	<b>53,035</b>	<b>151</b>	<b>44,017</b>	<b>234</b>	<b>50,490</b>	<b>202</b>

5-Year Trend  
Crashes by Crash Type

## 5-Year Trend - Pedestrian-Involved Crashes by Month

Month	2017		2018		2019		2020		2021	
	Total Crashes	Fatal Crashes	Total Crashes	Fatal Crashes	Total Crashes	Fatal Crashes	Total Crashes	Fatal Crashes	Total Crashes	Fatal Crashes
January	55	5	64	2	57	2	53	1	32	3
February	41	5	65	3	50	2	49	6	29	4
March	52	2	47	1	50	7	45	5	38	6
April	50	4	46	3	57	2	24	5	44	5
May	60	2	57	2	68	1	36	5	41	5
June	62	3	65	6	52	4	55	4	48	2
July	66	4	52	3	63	1	50	2	51	5
August	53	4	55	8	60	2	56	6	65	6
September	59	3	81	6	70	2	63	5	52	5
October	69	1	79	6	78	3	41	4	67	8
November	62	1	78	5	66	2	37	6	52	9
December	59	4	82	5	61	5	46	4	43	2
<b>Total</b>	<b>688</b>	<b>38</b>	<b>771</b>	<b>50</b>	<b>732</b>	<b>33</b>	<b>555</b>	<b>53</b>	<b>562</b>	<b>60</b>

## 2021 Pedestrian-Involved Crashes by Month

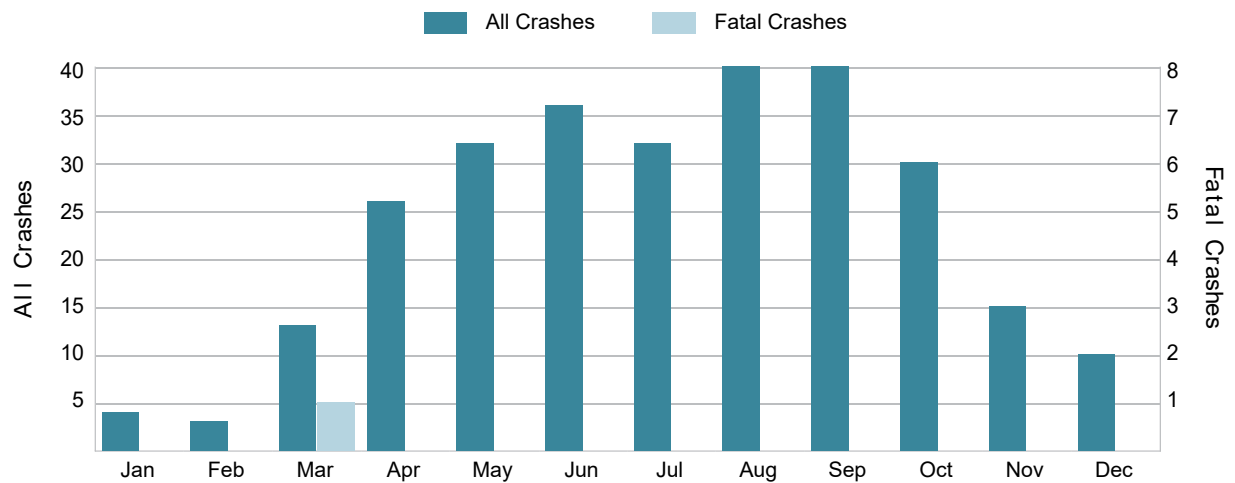


## MSP Post 22 - Metro South (continued)

### 5-Year Trend - Bicyclist-Involved Crashes by Month

Month	2017		2018		2019		2020		2021	
	Total Crashes	Fatal Crashes	Total Crashes	Fatal Crashes	Total Crashes	Fatal Crashes	Total Crashes	Fatal Crashes	Total Crashes	Fatal Crashes
January	10	0	5	0	7	0	11	1	4	0
February	14	0	10	0	3	0	12	0	3	0
March	10	0	8	0	13	1	6	0	13	1
April	24	0	14	0	25	1	10	2	26	0
May	35	0	38	0	37	0	31	1	32	0
June	55	0	52	0	63	2	47	0	36	0
July	68	0	62	0	45	0	50	2	32	0
August	68	0	51	1	60	0	54	5	40	0
September	67	0	65	1	49	0	47	0	40	0
October	35	0	38	0	38	1	25	0	30	0
November	28	0	15	0	17	0	15	0	15	0
December	14	1	10	0	8	0	3	1	10	0
<b>Total</b>	<b>428</b>	<b>1</b>	<b>368</b>	<b>2</b>	<b>365</b>	<b>5</b>	<b>311</b>	<b>12</b>	<b>281</b>	<b>1</b>

### 2021 Bicyclist-Involved Crashes by Month



## 2021 - Reported Motor Vehicle Crashes by County

County	Crashes												
	Total	Fatal	Injury	Property Damage	Inter-State	US Route	State Route	Local Street	Alcohol-Involved	Drug-Involved	Deer-Involved	Pedestrian-Involved	Bicyclist-Involved
Wayne	50,490	202	11,830	38,458	6,402	3,003	9,350	31,644	1,491	408	511	562	281
Total	50,490	202	11,830	38,458	6,402	3,003	9,350	31,644	1,491	408	511	562	281

## 2021 - People in Reported Motor Vehicle Crashes by County

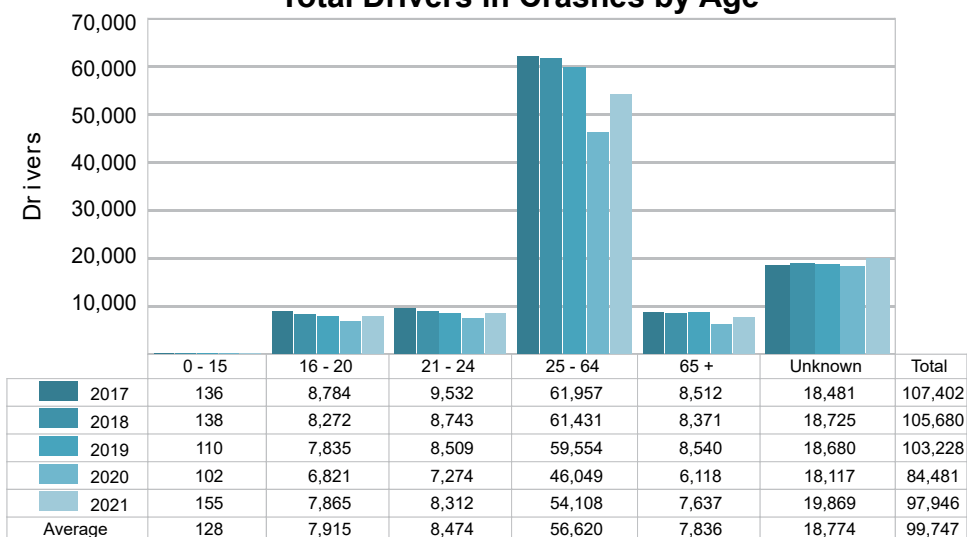
County	People					
	Fatalities	Suspected Serious Injuries	Suspected Minor Injuries	Possible Injuries	No Injuries	Uncoded & Errors
Wayne	219	2,526	9,002	20,322	80,515	20,984
<b>Total</b>	<b>219</b>	<b>2,526</b>	<b>9,002</b>	<b>20,322</b>	<b>80,515</b>	<b>20,984</b>

# MSP Post 22 - Metro South (continued)

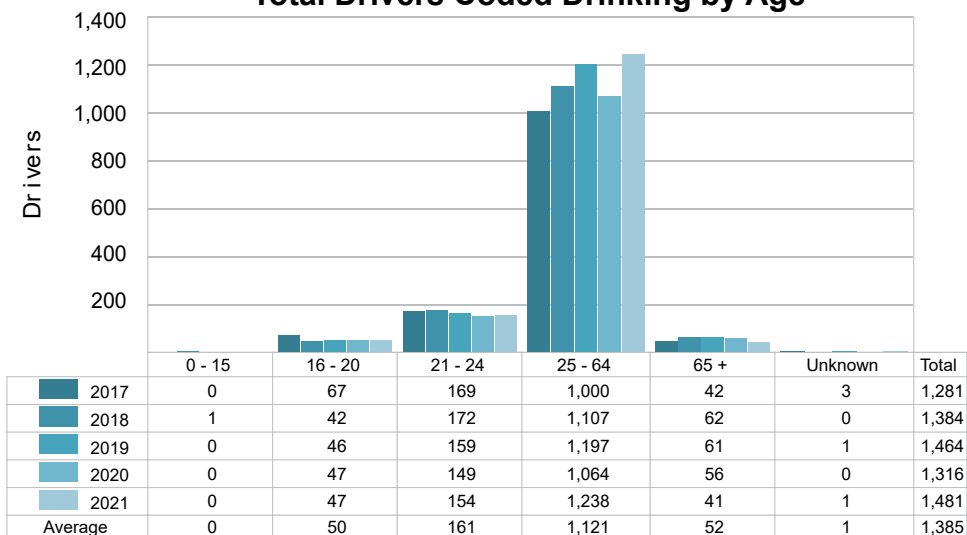
## 5-Year Trend - Drivers in Crashes Coded Drinking by Driver Age

Driver Age	2017		2018		2019		2020		2021	
	Total Drivers in Crashes	Total Drivers Coded Drinking	Total Drivers in Crashes	Total Drivers Coded Drinking	Total Drivers in Crashes	Total Drivers Coded Drinking	Total Drivers in Crashes	Total Drivers Coded Drinking	Total Drivers in Crashes	Total Drivers Coded Drinking
0 - 15	136	0	138	1	110	0	102	0	155	0
16 - 20	8,784	67	8,272	42	7,835	46	6,821	47	7,865	47
21 - 24	9,532	169	8,743	172	8,509	159	7,274	149	8,312	154
25 - 64	61,957	1,000	61,431	1,107	59,554	1,197	46,049	1,064	54,108	1,238
65 +	8,512	42	8,371	62	8,540	61	6,118	56	7,637	41
Unknown	18,481	3	18,725	0	18,680	1	18,117	0	19,869	1
<b>Total</b>	<b>107,402</b>	<b>1,281</b>	<b>105,680</b>	<b>1,384</b>	<b>103,228</b>	<b>1,464</b>	<b>84,481</b>	<b>1,316</b>	<b>97,946</b>	<b>1,481</b>

### 5-Year Trend Total Drivers in Crashes by Age



### 5-Year Trend Total Drivers Coded Drinking by Age



### 2021 - Bodily Alcohol Concentration (BAC) Results Among All Vehicle Drivers in Alcohol-Involved Crashes by Age

Age Group	Drivers				BAC Result Range for Drivers Coded Drinking				
	Total Drivers in Alcohol-Involved Crashes	Total Drivers Tested in all Crashes	Total Drivers Coded Drinking, Tested	Total Drivers Coded Drinking	BAC = 0.00	BAC 0.01 g/dL to 0.07 g/dL	BAC 0.08 g/dL to 0.16 g/dL	BAC 0.17 g/dL and Above	BAC Not Reported
0 - 15	2	1	0	0	0	0	0	0	0
16 - 20	112	59	39	47	0	5	18	6	18
21 - 24	239	149	132	154	0	5	41	46	62
25 - 64	1,865	1,226	1,039	1,238	2	41	244	424	527
65 +	113	46	34	41	0	2	16	8	15
Unknown	384	1	0	1	0	0	0	0	1
<b>Total</b>	<b>2,715</b>	<b>1,482</b>	<b>1,244</b>	<b>1,481</b>	<b>2</b>	<b>53</b>	<b>319</b>	<b>484</b>	<b>623</b>

Notes: BAC measured in grams (g) per deciliter (dL).

BAC may not be reported if drivers are not tested or if the results are not available immediately (as in the case of a blood test).

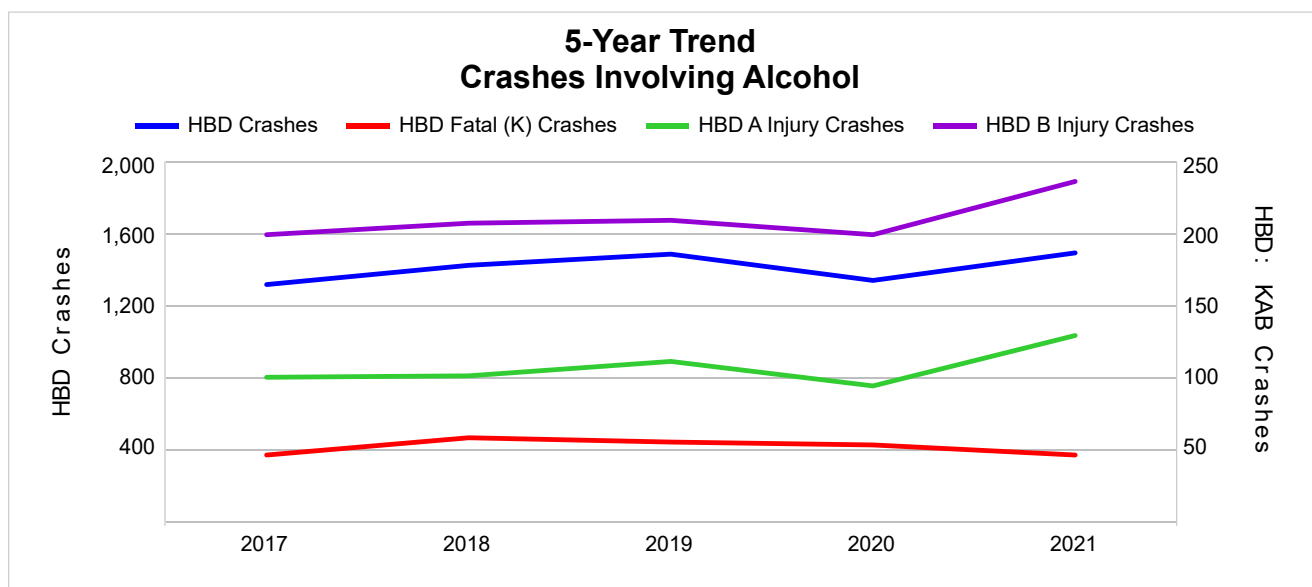
A driver may be coded by the officer as drinking even though no test is administered.

### 5-Year Trend - Crashes Involving Alcohol

Year	All Crashes	HBD Crashes	% HBD	Fatal Crashes	HBD Fatal Crashes	% HBD	A Injury Crashes	HBD A Injury Crashes	% HBD	B Injury Crashes	HBD B Injury Crashes	% HBD
2017	54,920	1,315	2.4	145	46	31.7	852	100	11.7	3,030	199	6.6
2018	54,072	1,422	2.6	153	58	37.9	781	101	12.9	2,969	207	7.0
2019	53,035	1,484	2.8	151	55	36.4	815	111	13.6	3,074	209	6.8
2020	44,017	1,338	3.0	234	53	22.6	836	94	11.2	2,953	199	6.7
2021	50,490	1,491 **	3.0	202	46	22.8	963 **	129 **	13.4	3,402 **	236 **	6.9

Note: \* Indicates that the most recent year is the lowest number or percentage reported in the 5-year period in that column.

\*\* Indicates that the most recent year is the highest number or percentage reported in the 5-year period in that column.



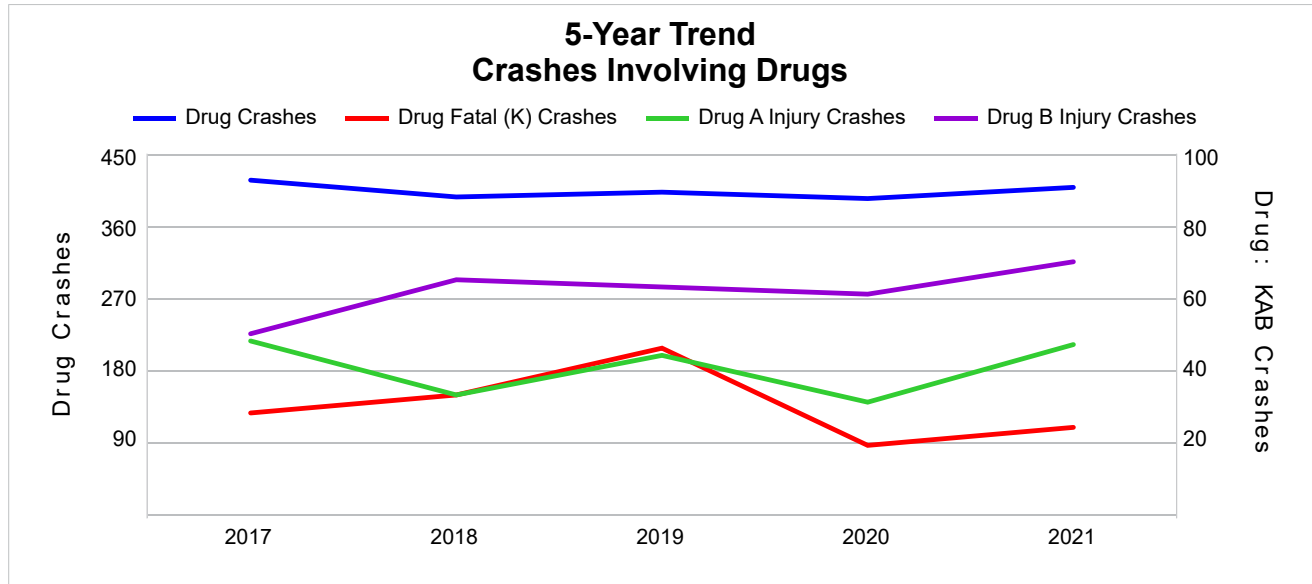
Note: Had-Been-Drinking (HBD)

## 5-Year Trend - Crashes Involving Drugs

Year	All Crashes	Drug Crashes	% Drug	Fatal Crashes	Drug Fatal Crashes	% Drug	A Injury Crashes	Drug A Injury Crashes	% Drug	B Injury Crashes	Drug B Injury Crashes	% Drug
2017	54,920	417	0.8	145	28	19.3	852	48	5.6	3,030	50	1.7
2018	54,072	396	0.7	153	33	21.6	781	33	4.2	2,969	65	2.2
2019	53,035	402	0.8	151	46	30.5	815	44	5.4	3,074	63	2.0
2020	44,017	394	0.9	234	19	8.1	836	31	3.7	2,953	61	2.1
2021	50,490	408	0.8	202	24	11.9	963 **	47	4.9	3,402 **	70 **	2.1

Note: \* Indicates that the most recent year is the lowest number or percentage reported in the 5-year period in that column.

\*\* Indicates that the most recent year is the highest number or percentage reported in the 5-year period in that column.



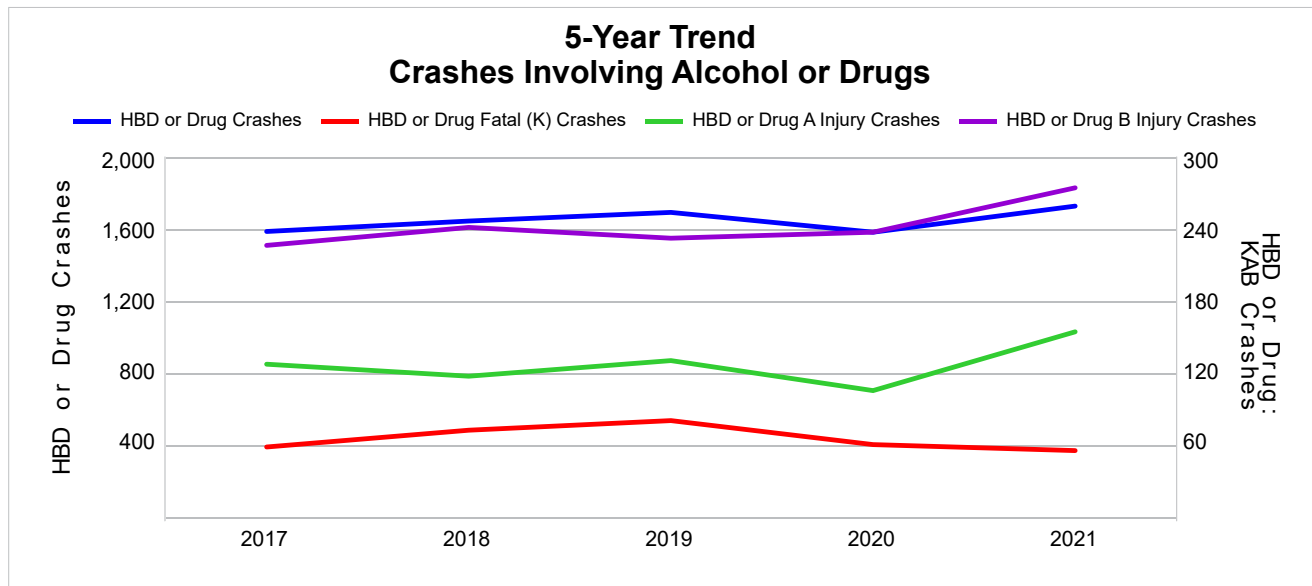


### 5-Year Trend - Crashes Involving Alcohol or Drugs

Year	All Crashes	HBD or Drug Crashes	% HBD or Drug	Fatal Crashes	HBD or Drug Fatal Crashes	% HBD or Drug	A Injury Crashes	HBD or Drug A Injury Crashes	% HBD or Drug	B Injury Crashes	HBD or Drug B Injury Crashes	% HBD or Drug
2017	54,920	1,584	2.9	145	58	40.0	852	127	14.9	3,030	226	7.5
2018	54,072	1,642	3.0	153	72	47.1	781	117	15.0	2,969	241	8.1
2019	53,035	1,690	3.2	151	80	53.0	815	130	16.0	3,074	232	7.5
2020	44,017	1,580	3.6	234	60	25.6	836	105	12.6	2,953	237	8.0
2021	50,490	1,725 **	3.4	202	55 *	27.2	963 **	154 **	16.0 **	3,402 **	274 **	8.1

Note: \* Indicates that the most recent year is the lowest number or percentage reported in the 5-year period in that column.

\*\* Indicates that the most recent year is the highest number or percentage reported in the 5-year period in that column.



Note: Had-Been-Drinking (HBD)

# MSP Post 22 - Metro South (continued)

## 2021 - Restraints Worn Among Vehicle Drivers and Injured Passengers by Vehicle Type

Vehicle Type	Total Occupants			Fatalities			A - Suspected Serious			B - Suspected Minor			C - Possible Injury			No Injury		
	Total	Used Restraint	%	Total	Used Restraint	%	Total	Used Restraint	%	Total	Used Restraint	%	Total	Used Restraint	%	Total	Used Restraint	%
Passenger Car, SUV, Van	84,750	57,224	67.5	105	28	26.7	808	436	54.0	3,486	2,687	77.1	10,174	7,713	75.8	56,747	46,358	81.7
Motor Home	132	89	67.4	0	0	0.0	1	1	100.0	1	0	0.0	13	10	76.9	94	78	83.0
Pickup Truck	6,411	4,797	74.8	3	1	33.3	42	23	54.8	162	139	85.8	441	374	84.8	4,789	4,260	89.0
Small Truck Under 10,000 lbs. GVWR	367	230	62.7	0	0	0.0	3	2	66.7	6	3	50.0	20	20	100.0	246	205	83.3
Motorcycle	648	304	46.9	30	10	33.3	131	57	43.5	186	94	50.5	133	68	51.1	133	75	56.4
Moped/Goped	137	16	11.7	7	0	0.0	29	3	10.3	52	6	11.5	25	3	12.0	11	4	36.4
Go-Cart/Golf Cart	3	0	0.0	0	0	0.0	0	0	0.0	1	0	0.0	0	0	0.0	2	0	0.0
Snowmobile	0	0	0.0	0	0	0.0	0	0	0.0	0	0	0.0	0	0	0.0	0	0	0.0
Off-Road Vehicle (ORV)/All-Terrain Vehicle (ATV)	63	4	6.3	7	1	14.3	13	0	0.0	14	0	0.0	11	1	9.1	13	2	15.4
Other (non-registered farm equipment, construction equipment, snow plows, etc.)	349	140	40.1	0	0	0.0	11	2	18.2	16	5	31.3	29	11	37.9	180	122	67.8
Truck/Bus (over 10,000 lbs. GVWR/ 8+ occupants/ hazmat placard)	3,382	2,632	77.8	4	0	0.0	8	2	25.0	51	31	60.8	139	64	46.0	2,907	2,535	87.2
Uncoded & Errors	5,989	15	0.3	0	0	0.0	0	0	0.0	3	0	0.0	5	3	60.0	25	12	48.0
<b>Total</b>	<b>102,231</b>	<b>65,451</b>	<b>64.0</b>	<b>156</b>	<b>40</b>	<b>25.6</b>	<b>1,046</b>	<b>526</b>	<b>50.3</b>	<b>3,978</b>	<b>2,965</b>	<b>74.5</b>	<b>10,990</b>	<b>8,267</b>	<b>75.2</b>	<b>65,147</b>	<b>53,651</b>	<b>82.4</b>

Note: Restraint Use includes shoulder belt only used, lap belt only used, both lap and shoulder belts used, child restraint used, restraint failure, and helmet worn.

## 2021 - Restraints Worn Among Vehicle Drivers and Injured Passengers by Age

Age Group	Total Occupants			Fatalities			A - Suspected Serious			B - Suspected Minor			C - Possible Injury			No Injury		
	Total	Used Restraint	%	Total	Used Restraint	%	Total	Used Restraint	%	Total	Used Restraint	%	Total	Used Restraint	%	Total	Used Restraint	%
0 - 15	1,158	804	69.4	5	3	60.0	41	12	29.3	183	105	57.4	822	616	74.9	100	68	68.0
16 - 20	8,512	6,935	81.5	18	5	27.8	117	50	42.7	463	335	72.4	1,217	887	72.9	6,615	5,658	85.5
21 - 24	8,776	6,903	78.7	19	5	26.3	120	60	50.0	481	349	72.6	1,207	883	73.2	6,838	5,606	82.0
25 - 64	56,021	44,138	78.8	107	21	19.6	694	349	50.3	2,535	1,889	74.5	6,800	5,082	74.7	44,986	36,795	81.8
65 +	7,891	6,663	84.4	7	6	85.7	74	55	74.3	315	287	91.1	938	797	85.0	6,448	5,518	85.6
Unknown	19,873	8	0.0	0	0	0.0	0	0	0.0	1	0	0.0	6	2	33.3	160	6	3.8
<b>Total</b>	<b>102,231</b>	<b>65,451</b>	<b>64.0</b>	<b>156</b>	<b>40</b>	<b>25.6</b>	<b>1,046</b>	<b>526</b>	<b>50.3</b>	<b>3,978</b>	<b>2,965</b>	<b>74.5</b>	<b>10,990</b>	<b>8,267</b>	<b>75.2</b>	<b>65,147</b>	<b>53,651</b>	<b>82.4</b>

Note: Restraint Use includes shoulder belt only used, lap belt only used, both lap and shoulder belts used, child restraint used, restraint failure, and helmet worn.

## 5-Year Trend - Restraint Use Among Drivers

Restraint Use	2017			2018			2019			2020			2021		
	Drivers	Fatal Drivers	Injured Drivers	Drivers	Fatal Drivers	Injured Drivers	Drivers	Fatal Drivers	Injured Drivers	Drivers	Fatal Drivers	Injured Drivers	Drivers	Fatal Drivers	Injured Drivers
No Belts Available	166	0	27	135	0	24	142	0	25	151	1	48	191	0	56
Shoulder Belt Only Used	680	1	87	481	0	80	534	2	89	487	0	85	574	0	84
Lap Belt Only Used	165	1	15	104	0	20	125	0	23	83	0	15	106	1	11
Both Lap & Shoulder Belt Used	77,677	26	9,655	74,816	23	9,156	71,351	18	9,261	52,541	27	7,452	61,602	22	8,618
No Belts Used	610	13	222	542	22	200	569	21	220	628	30	248	728	31	282
Child Restraint Used - Forward Facing	3	0	0	0	0	0	0	0	0	0	0	0	0	0	0
Child Restraint Not Used, Unavailable or Improper Use	0	0	0	0	0	0	0	0	0	0	0	0	0	0	0
Child Restraint Used - Rear Facing	0	0	0	0	0	0	0	0	0	0	0	0	0	0	0
Child Restraint Used - Booster Seat	4	0	0	0	0	0	1	0	0	0	0	0	0	0	0
Restraint Failure	23	0	8	17	0	4	19	0	3	23	0	3	30	0	3
Restraint Use Unknown	25,004	30	1,164	26,968	23	1,474	27,793	27	1,575	28,049	40	1,996	31,158	30	2,174
Helmet Worn	297	7	209	256	5	193	278	15	192	272	16	197	308	10	218
Helmet Not Worn	164	8	125	194	12	148	231	13	170	292	22	220	296	17	239
Helmet Use Unknown	56	4	36	68	2	44	58	4	35	77	6	53	114	13	73
Uncoded & Errors	2,553	0	0	2,099	0	0	2,127	0	0	1,878	0	1	2,839	0	3
<b>Total</b>	<b>107,402</b>	<b>90</b>	<b>11,548</b>	<b>105,680</b>	<b>87</b>	<b>11,343</b>	<b>103,228</b>	<b>100</b>	<b>11,593</b>	<b>84,481</b>	<b>142</b>	<b>10,318</b>	<b>97,946</b>	<b>124</b>	<b>11,761</b>

## 5-Year Trend - Restraint Use Among Drivers Coded Drinking

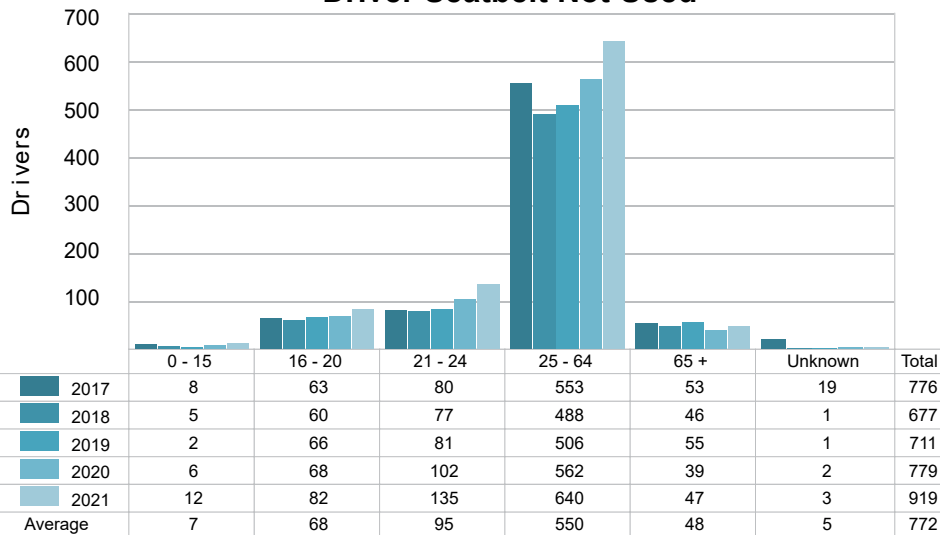
Restraint Use	2017			2018			2019			2020			2021		
	Drivers	Fatal Drivers	Injured Drivers	Drivers	Fatal Drivers	Injured Drivers	Drivers	Fatal Drivers	Injured Drivers	Drivers	Fatal Drivers	Injured Drivers	Drivers	Fatal Drivers	Injured Drivers
No Belts Available	4	0	0	6	0	3	0	0	0	5	0	2	2	0	1
Shoulder Belt Only Used	6	0	2	5	0	1	4	0	2	4	0	2	7	0	2
Lap Belt Only Used	1	0	0	3	0	1	1	0	1	0	0	0	3	0	1
Both Lap & Shoulder Belt Used	891	7	220	943	3	238	944	3	240	793	3	188	919	5	255
No Belts Used	60	3	31	61	5	38	88	8	48	85	6	53	95	5	54
Child Restraint Used - Forward Facing	0	0	0	0	0	0	0	0	0	0	0	0	0	0	0
Child Restraint Not Used, Unavailable or Improper Use	0	0	0	0	0	0	0	0	0	0	0	0	0	0	0
Child Restraint Used - Rear Facing	0	0	0	0	0	0	0	0	0	0	0	0	0	0	0
Child Restraint Used - Booster Seat	1	0	0	0	0	0	0	0	0	0	0	0	0	0	0
Restraint Failure	0	0	0	0	0	0	0	0	0	2	0	0	2	0	0
Restraint Use Unknown	297	10	91	337	13	113	386	8	124	399	4	129	423	5	148
Helmet Worn	8	0	8	4	1	2	10	7	3	6	1	3	9	0	8
Helmet Not Worn	9	1	8	22	5	14	29	7	21	22	2	17	19	3	14
Helmet Use Unknown	2	0	0	3	0	2	2	0	1	0	0	0	2	0	2
Uncoded & Errors	2	0	0	0	0	0	0	0	0	0	0	0	0	0	0
<b>Total</b>	<b>1,281</b>	<b>21</b>	<b>360</b>	<b>1,384</b>	<b>27</b>	<b>412</b>	<b>1,464</b>	<b>33</b>	<b>440</b>	<b>1,316</b>	<b>16</b>	<b>394</b>	<b>1,481</b>	<b>18</b>	<b>485</b>

## 5-Year Trend - Seatbelt Not Used Among Drivers by Age

Age Group	2017			2018			2019			2020			2021		
	Drivers	Fatal Drivers	Injured Drivers	Drivers	Fatal Drivers	Injured Drivers	Drivers	Fatal Drivers	Injured Drivers	Drivers	Fatal Drivers	Injured Drivers	Drivers	Fatal Drivers	Injured Drivers
0 - 15	8	0	1	5	0	3	2	0	0	6	0	5	12	1	7
16 - 20	63	2	25	60	4	27	66	1	25	68	1	26	82	1	39
21 - 24	80	3	28	77	1	28	81	2	35	102	8	50	135	7	53
25 - 64	553	7	183	488	16	158	506	14	171	562	21	207	640	22	230
65 +	53	1	12	46	1	8	55	4	14	39	1	8	47	0	9
Unknown	19	0	0	1	0	0	1	0	0	2	0	0	3	0	0
<b>Total</b>	<b>776</b>	<b>13</b>	<b>249</b>	<b>677</b>	<b>22</b>	<b>224</b>	<b>711</b>	<b>21</b>	<b>245</b>	<b>779</b>	<b>31</b>	<b>296</b>	<b>919</b>	<b>31</b>	<b>338</b>

Note: Seatbelt Not Used includes no belts available or no belts used.

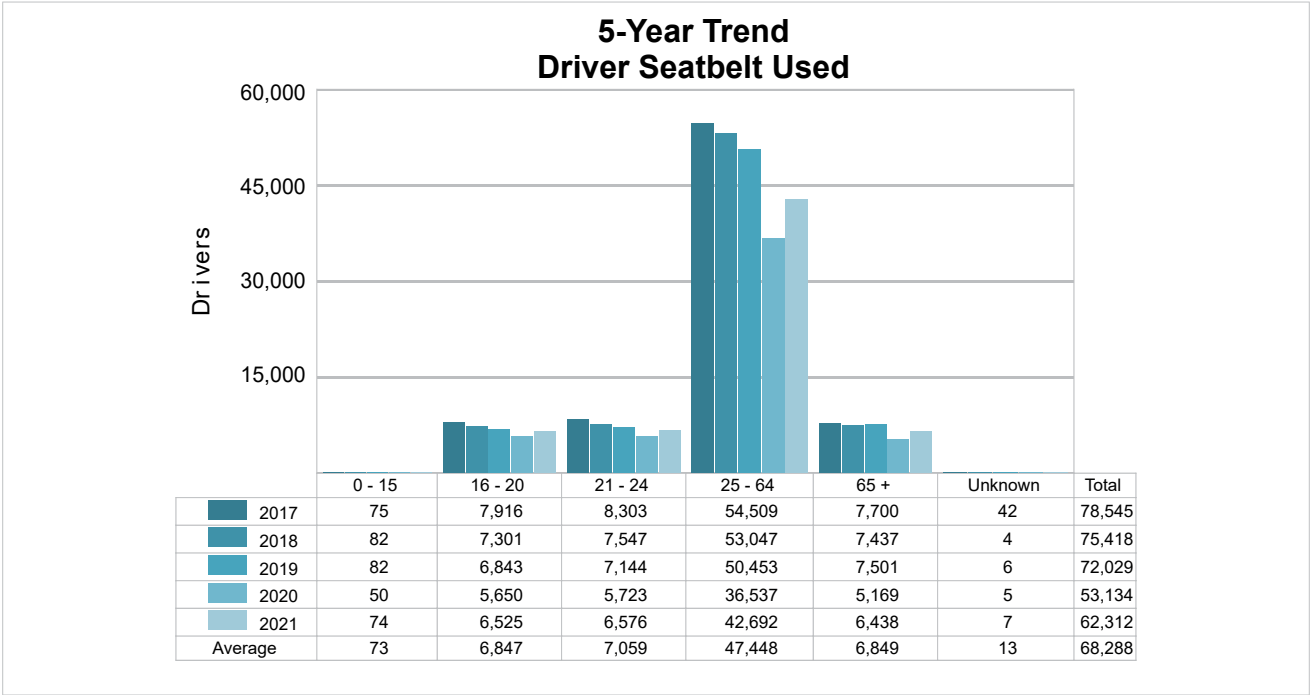
### 5-Year Trend Driver Seatbelt Not Used



5-Year Trend - Seatbelt Used Among Drivers by Age

Age Group	2017			2018			2019			2020			2021		
	Drivers	Fatal Drivers	Injured Drivers	Drivers	Fatal Drivers	Injured Drivers	Drivers	Fatal Drivers	Injured Drivers	Drivers	Fatal Drivers	Injured Drivers	Drivers	Fatal Drivers	Injured Drivers
0 - 15	75	0	7	82	0	9	82	0	6	50	0	8	74	0	7
16 - 20	7,916	3	920	7,301	1	835	6,843	1	819	5,650	0	804	6,525	3	867
21 - 24	8,303	0	1,066	7,547	1	975	7,144	0	1,009	5,723	2	867	6,576	1	975
25 - 64	54,509	20	6,787	53,047	16	6,426	50,453	15	6,550	36,537	18	5,136	42,692	14	5,946
65 +	7,700	5	983	7,437	5	1,014	7,501	4	992	5,169	7	740	6,438	5	920
Unknown	42	0	2	4	0	1	6	0	0	5	0	0	7	0	1
Total	78,545	28	9,765	75,418	23	9,260	72,029	20	9,376	53,134	27	7,555	62,312	23	8,716

Note: Seatbelt Used includes shoulder belt only used, lap belt only used, both lap and shoulder belts used, and restraint failure.



## MSP Post 22 - Metro South (continued)

## 5-Year Trend - Drivers in Crashes by Hazardous Action

Hazardous Action	2017		2018		2019		2020		2021	
	Total Drivers in Crashes	Drivers in Fatal Crashes	Total Drivers in Crashes	Drivers in Fatal Crashes	Total Drivers in Crashes	Drivers in Fatal Crashes	Total Drivers in Crashes	Drivers in Fatal Crashes	Total Drivers in Crashes	Drivers in Fatal Crashes
None	48,083	96	46,545	87	45,805	96	35,795	140	42,260	104
Speed Too Fast	3,986	31	3,873	33	3,913	35	3,633	44	3,493	35
Speed Too Slow	30	0	34	0	32	0	26	0	25	0
Failed to Yield	8,036	5	7,904	11	7,872	10	6,129	17	7,466	17
Disregard Traffic Control	2,874	8	2,841	15	2,922	12	2,924	21	3,292	12
Drove Wrong Way	132	4	158	0	160	0	163	3	155	3
Drove Left of Center	413	5	369	7	399	7	400	3	367	6
Improper Passing	785	3	814	0	846	1	705	1	883	3
Improper Lane Use	3,833	3	3,803	2	3,926	2	2,961	4	3,773	4
Improper Turn	1,334	2	1,334	2	1,464	3	1,066	2	1,330	0
Improper/No Signal	77	0	81	0	78	0	51	0	72	0
Improper Backing	1,460	0	1,470	0	1,542	0	1,128	1	1,329	0
Unable to Stop in Assured Clear Distance	14,933	5	14,357	7	13,857	8	9,085	12	11,118	9
Other	3,430	15	3,339	11	3,252	12	2,698	21	3,132	23
Unknown	13,569	33	14,413	33	12,746	26	13,728	51	14,104	40
Reckless Driving	601	22	573	20	578	23	658	51	705	40
Careless/Negligent Driving	1,765	13	1,788	16	1,817	12	1,574	20	1,623	20
Uncoded & Errors	2,061	6	1,984	0	2,019	1	1,757	2	2,819	3
<b>Total</b>	<b>107,402</b>	<b>251</b>	<b>105,680</b>	<b>244</b>	<b>103,228</b>	<b>248</b>	<b>84,481</b>	<b>393</b>	<b>97,946</b>	<b>319</b>

### Office of Highway Safety Planning

---

Physical Address:  
7150 Harris Drive  
Dimondale, Michigan 48821

Mailing Address:  
P.O. Box 30634  
Lansing, Michigan 48909

Find us on the web:  
[MichiganTrafficCrashFacts.org](http://MichiganTrafficCrashFacts.org)  
[mtcf-info@umich.edu](mailto:mtcf-info@umich.edu)

