



2021

MTCF
Michigan Traffic
Crash Facts

Michigan Traffic Crash Facts

Reporting Criteria

Please pay particular attention to the wording when interpreting the three levels of data gathered for this report.

Crash

The Crash Level analyzes data related to crash events and returns one result per crash.

Examples: Time, weather, and location.

Units

The Units Level analyzes the experience of the units in the crash and returns one result per vehicle, driver, pedestrian, bicyclist, or train.

Examples: Vehicle type, driver condition, and unit events.

People

The People Level analyzes the experience of the people involved in the crash and returns one result per occupant/person/party.

Examples: Age, injury severity, and seat belt or helmet use.

KABCO Injury Indicator:

K = Killed

A = Suspected Serious Injury

B = Suspected Minor Injury

C = Possible Injury

O = No Injury

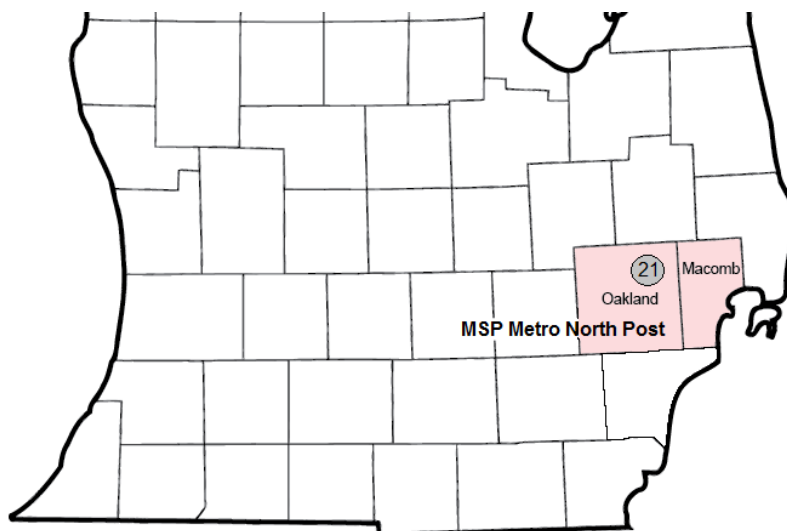
Property Damage Only (PDO)



Michigan State Police (MSP) Post 21 - Metro North

2021 Traffic Crash Data & 2017-2021 5-Year Trends

MSP Post 21 - Metro North is comprised of Macomb and Oakland counties. Trend tables for this report are based on those counties.



Sources:

The crashes in this report occurred on public roadways in Michigan and resulted in injuries, fatalities, or property damage (with \$1,000 as a reporting threshold). The information was gathered from Michigan Traffic Crash Report Forms (UD-10) submitted by local police departments, sheriff's offices, and the Michigan State Police. Other related information was obtained from the departments of Transportation, State, and Community Health.

MSP Post 21 - Metro North

- There were 53,909 crashes in Post 21 during 2021. [Page 1]
- A total of 125 fatalities resulted from 121 fatal crashes in 2021 in Post 21. [Page 1]
- There were 14,863 injuries and 10,839 injury crashes. [Page 1]
- There were 42,949 property damage only crashes (no fatalities or injuries). [Page 1]
- October had the highest number of crashes (5,559). [Pages 1-2]
- December had the highest number of fatal crashes (15) while June and December had the highest number of fatalities (15). [Pages 1-2]
- October had the highest number of injury crashes (1,121) and injuries (1,544). [Page 1]
- October had the highest number of property damage only crashes (4,426). [Page 1]
- Of all vehicles involved in fatal crashes, 17 (8.7%) were motorcycles. [Page 1]
- Friday was the day of the week with the highest number of crashes (9,114) and Sunday had the highest number of fatal crashes (20). [Pages 2-3]
- The 3:00 PM – 5:59 PM time period had the highest number of crashes (14,312). This holds true for every year between 2017 and 2021. The 9:00 PM – 11:59 PM time period had the highest number of fatal crashes (27). [Pages 5-6]
- During the period from 2017 to 2021, the highest number of deer crashes occurred in 2019 (2,607). The 6:00 PM – 8:59 PM time period had the highest number of deer-involved crashes. There were 0 fatal crashes involving deer in 2021. [Page 7]
- Oakland County (59.4%) had the highest number of crashes in Post 21 in 2021, followed by Macomb County (40.6%). [Page 11]
- Oakland County (52.8%) had the highest number of fatalities in Post 21 in 2021, followed by Macomb County (47.2%). [Page 11]
- The highest number of drivers in crashes (130,774) occurred during 2017 and the highest number of drivers coded drinking in crashes (1,768) occurred during 2018 within the five year period between 2017 and 2021. [Page 12]
- A total of 1,554 crashes involved alcohol in 2021. [Page 13]
- Alcohol-involved fatal crashes were the highest in 2021 during the five-year period from 2017 to 2021 at 41. [Page 13]
- A total of 444 crashes, 19 fatal crashes, and 35 suspected injury crashes involved drugs in 2021. [Page 14]
- There were 89,667 drivers wearing seatbelts and 514 drivers not wearing seatbelts in crashes in 2021. Of the 514 drivers not wearing seatbelts, 20 (3.9%) were killed and 259 (50.4%) were injured. [Pages 17-19]
- The most common hazardous action coded for drivers in 2021 in all crashes was unable to stop in assured clear distance (16,679), while the most common hazardous actions coded for drivers in fatal crashes were speed too fast and unknown (26). [Page 20]

2021 - Crashes and Injury by Month

Month	Crashes				People	
	Total	Fatal	Injury	Property Damage Only (PDO)	Fatalities	Injuries
January	3,781	9	719	3,053	10	980
February	3,846	5	684	3,157	5	900
March	3,349	10	703	2,636	11	934
April	3,679	7	771	2,901	7	1,044
May	4,425	9	954	3,462	9	1,357
June	4,729	13	1,017	3,699	15	1,389
July	4,490	9	993	3,488	9	1,406
August	4,853	13	1,046	3,794	13	1,420
September	5,095	7	1,036	4,052	7	1,386
October	5,559	12	1,121	4,426	12	1,544
November	5,308	12	940	4,356	12	1,328
December	4,795	15	855	3,925	15	1,175
Total	53,909	121	10,839	42,949	125	14,863

2021 - Driver Statistics

Age Group	MSP Post 21 - Metro North			Driver Rates	
	2019 Population*	Licensed Drivers	Drivers in Crashes	Per 10k Population	Per 10k Licensed
0 - 15	387,487	10,858	177	4.6	163.0
16 - 20	122,163	99,982	10,870	889.8	1,087.2
21 - 24	103,458	97,305	9,301	899.0	955.9
25 - 64	1,148,504	1,085,099	61,645	536.7	568.1
65 +	369,944	357,009	11,175	302.1	313.0
Unknown	0	0	9,366	--	--
Total	2,131,556	1,650,253	102,534	481.0	621.3

*2021 Population of Michigan Counties (by single-year of age) not yet available from U.S. Census Bureau.

2021 - Vehicles in Crashes

Vehicle Type	Motor Vehicles		Fatal Crashes		Injury Crashes	PDO Crashes
	Number of Vehicles	% of Total	Number	% of Total	Number	Number
Passenger Car, SUV, Van	86,033	83.9	142	72.8	18,314	67,577
Motor Home	112	0.1	0	0.0	20	92
Pickup Truck	10,385	10.1	23	11.8	2,024	8,338
Small Truck Under 10,000 lbs. GVWR	368	0.4	2	1.0	68	298
Motorcycle	470	0.5	17	8.7	339	114
Moped/Goped	47	0.0	0	0.0	43	4
Go-Cart/Golf Cart	9	0.0	0	0.0	6	3
Snowmobile	2	0.0	0	0.0	2	0
Off-Road Vehicle (ORV)/All-Terrain Vehicle (ATV)	27	0.0	1	0.5	19	7
Other (non-registered farm equipment, construction equipment, snow plows, etc.)	203	0.2	2	1.0	34	167
Truck/Bus (over 10,000 lbs. GVWR/8+ occupants/hazmat placard)	3,135	3.1	8	4.1	509	2,618
Uncoded & Errors	1,743	1.7	0	0.0	173	1,570
Total	102,534	100.0	195	100.0	21,551	80,788

MSP Post 21 - Metro North (continued)

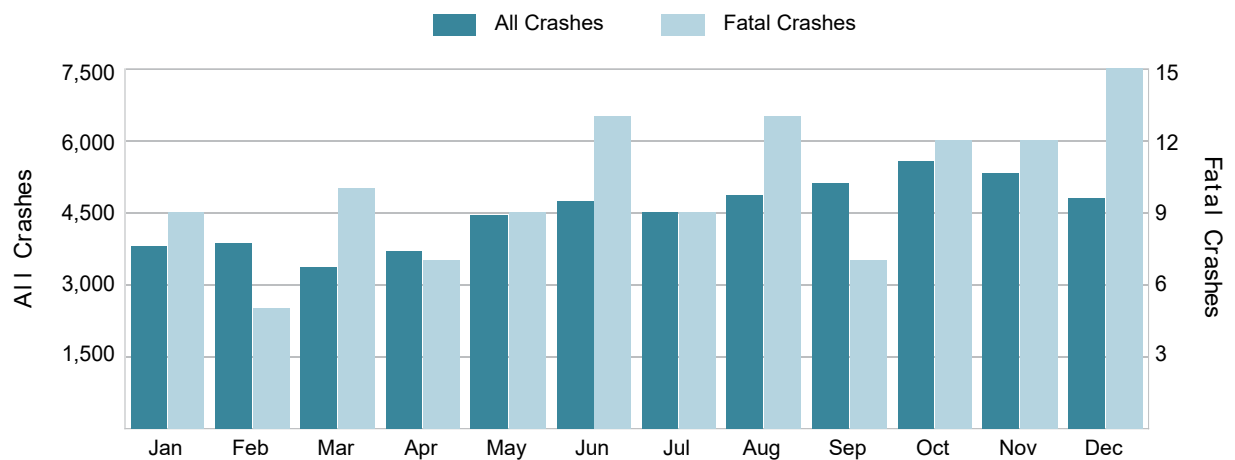
5-Year Trend - Crashes by Month

Month	2017		2018		2019		2020		2021	
	Total Crashes	Fatal Crashes	Total Crashes	Fatal Crashes	Total Crashes	Fatal Crashes	Total Crashes	Fatal Crashes	Total Crashes	Fatal Crashes
January	5,572	8	6,402	5	5,619	8	5,102	10	3,781	9
February	4,286	8	5,397	9	4,998	12	5,118	5	3,846	5
March	5,659	7	4,966	7	4,766	6	2,605	7	3,349	10
April	4,616	5	4,693	9	4,298	10	1,229	2	3,679	7
May	6,006	8	5,768	7	5,391	6	2,354	7	4,425	9
June	5,685	12	5,737	9	5,444	8	3,687	9	4,729	13
July	5,051	11	5,063	5	5,308	11	3,871	7	4,490	9
August	5,503	8	5,191	18	5,162	8	3,955	8	4,853	13
September	5,315	13	5,246	11	5,454	9	3,911	13	5,095	7
October	6,354	10	6,426	6	6,365	18	4,457	14	5,559	12
November	5,868	11	6,121	10	6,272	9	3,925	6	5,308	12
December	7,253	8	5,588	9	5,246	8	3,898	7	4,795	15
Total	67,168	109	66,598	105	64,323	113	44,112	95	53,909	121

5-Year Trend - Crashes by Day of Week

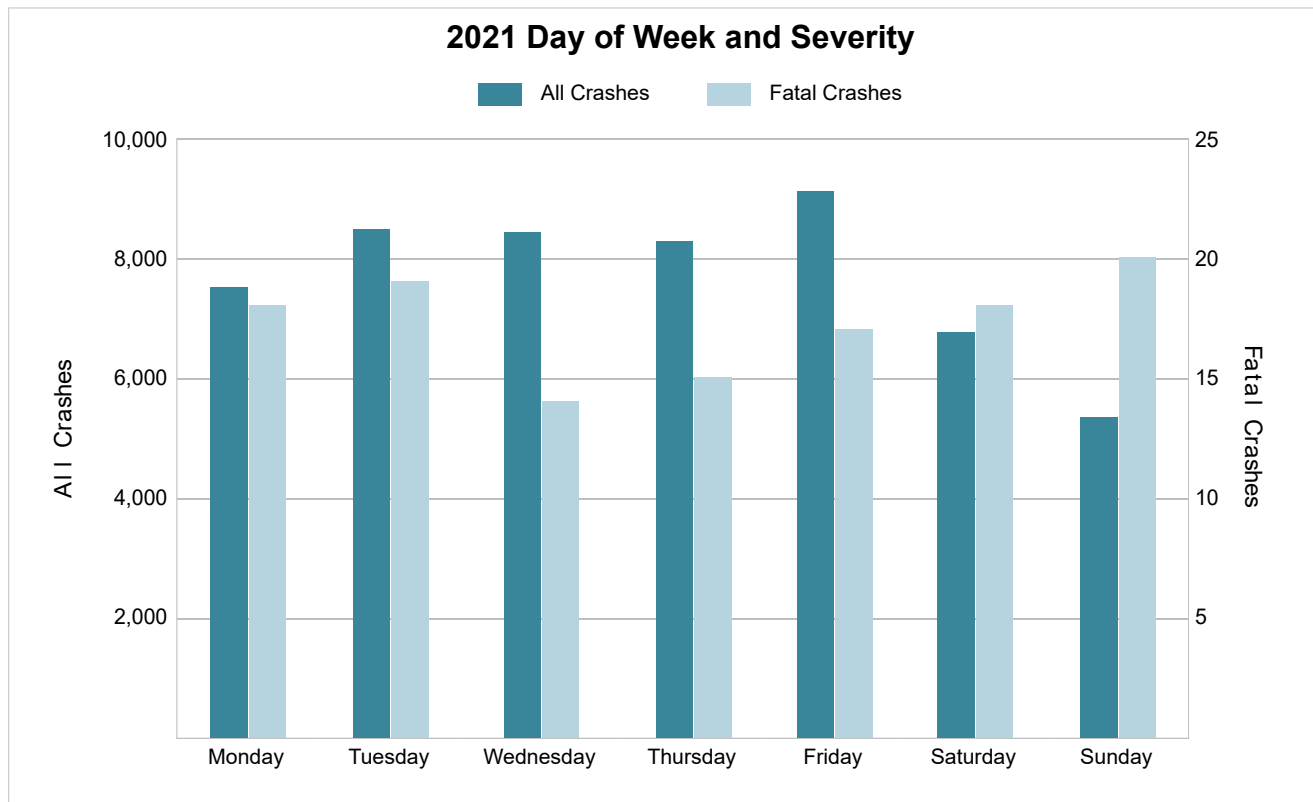
Day	2017		2018		2019		2020		2021	
	Total Crashes	Fatal Crashes	Total Crashes	Fatal Crashes	Total Crashes	Fatal Crashes	Total Crashes	Fatal Crashes	Total Crashes	Fatal Crashes
Monday	10,378	14	10,328	16	10,213	9	6,109	16	7,514	18
Tuesday	11,123	16	11,301	13	10,140	22	6,398	13	8,477	19
Wednesday	11,030	20	10,350	6	10,877	13	7,499	13	8,428	14
Thursday	10,765	22	10,766	13	10,203	15	7,041	13	8,277	15
Friday	10,883	12	11,092	25	10,177	15	7,185	15	9,114	17
Saturday	7,466	10	7,344	22	7,086	24	5,633	17	6,764	18
Sunday	5,523	15	5,417	10	5,627	15	4,247	8	5,335	20
Total	67,168	109	66,598	105	64,323	113	44,112	95	53,909	121

2021 Crashes by Month



2021 - Crashes by Day of Week

Day	All Crashes		Fatal Crashes		Injury Crashes			PDO Crashes
	Number	% of Total	Fatal	% of Fatal	A	B	C	Number
Monday	7,514	13.9	18	14.9	71	506	917	6,002
Tuesday	8,477	15.7	19	15.7	80	560	1,005	6,813
Wednesday	8,428	15.6	14	11.6	88	528	1,073	6,725
Thursday	8,277	15.4	15	12.4	102	543	962	6,655
Friday	9,114	16.9	17	14.0	93	629	1,101	7,274
Saturday	6,764	12.5	18	14.9	96	516	802	5,332
Sunday	5,335	9.9	20	16.5	99	417	651	4,148
Total	53,909	100.0	121	100.0	629	3,699	6,511	42,949

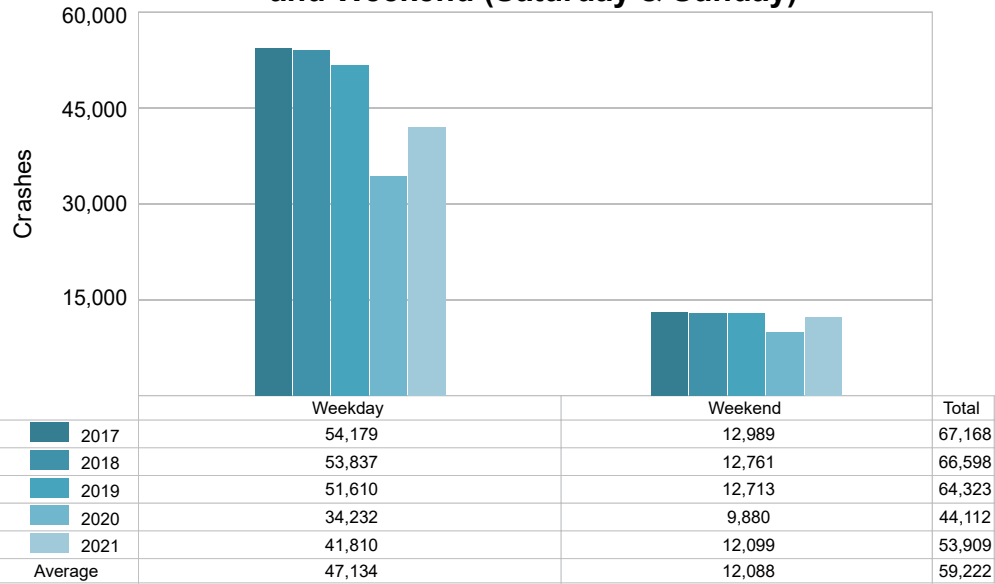


MSP Post 21 - Metro North (continued)

5-Year Trend - Crashes by Weekday and Weekend

Portion of Week	2017		2018		2019		2020		2021	
	Total Crashes	Fatal Crashes	Total Crashes	Fatal Crashes	Total Crashes	Fatal Crashes	Total Crashes	Fatal Crashes	Total Crashes	Fatal Crashes
Weekday	54,179	84	53,837	73	51,610	74	34,232	70	41,810	83
Weekend	12,989	25	12,761	32	12,713	39	9,880	25	12,099	38
Total	67,168	109	66,598	105	64,323	113	44,112	95	53,909	121

5-Year Crash Trends by Weekday (Monday - Friday) and Weekend (Saturday & Sunday)

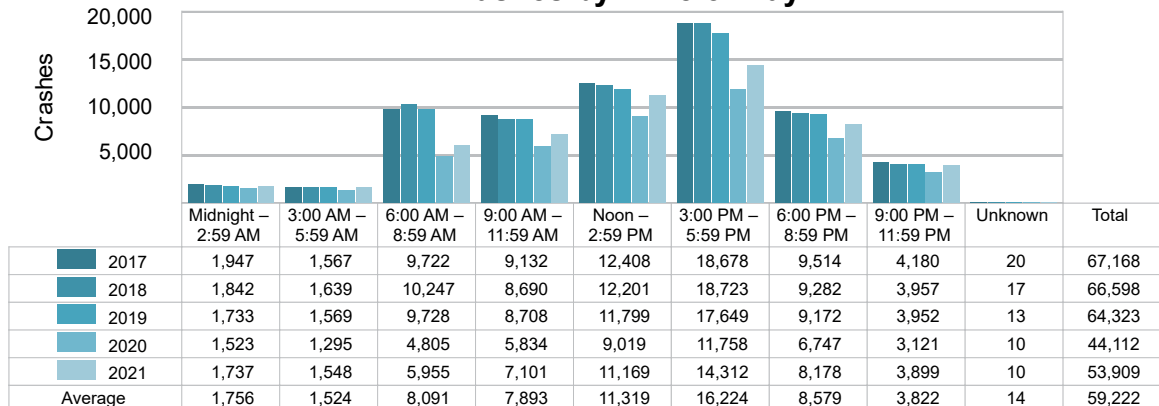


5-Year Trend - Crashes by Time of Day

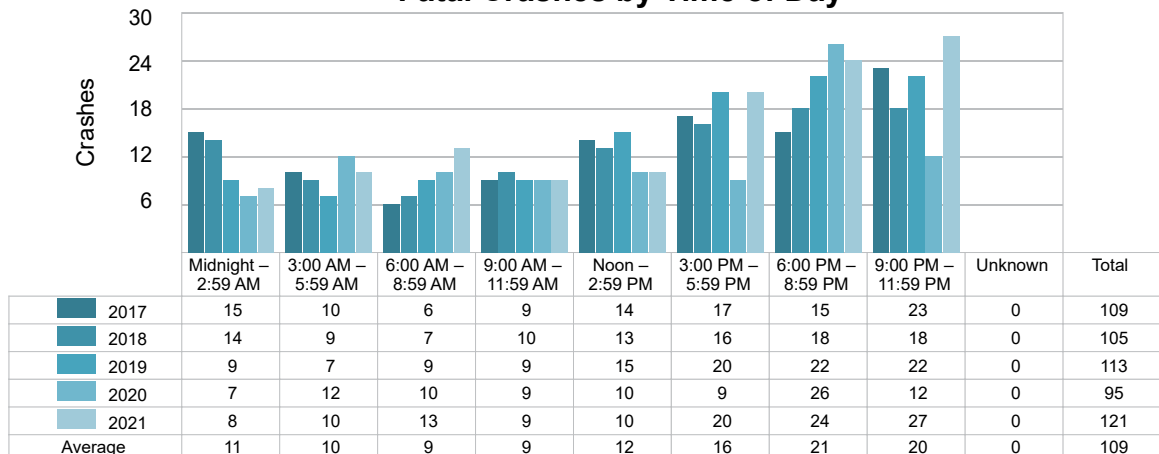
Time of Day	2017		2018		2019		2020		2021	
	Total Crashes	Fatal Crashes	Total Crashes	Fatal Crashes	Total Crashes	Fatal Crashes	Total Crashes	Fatal Crashes	Total Crashes	Fatal Crashes
Midnight – 2:59 AM	1,947	15	1,842	14	1,733	9	1,523	7	1,737	8
3:00 AM – 5:59 AM	1,567	10	1,639	9	1,569	7	1,295	12	1,548	10
6:00 AM – 8:59 AM	9,722	6	10,247	7	9,728	9	4,805	10	5,955	13
9:00 AM – 11:59 AM	9,132	9	8,690	10	8,708	9	5,834	9	7,101	9
Noon – 2:59 PM	12,408	14	12,201	13	11,799	15	9,019	10	11,169	10
3:00 PM – 5:59 PM	18,678 †	17	18,723 †	16	17,649 †	20	11,758 †	9	14,312 †	20
6:00 PM – 8:59 PM	9,514	15	9,282	18	9,172	22	6,747	26	8,178	24
9:00 PM – 11:59 PM	4,180	23	3,957	18	3,952	22	3,121	12	3,899	27
Unknown	20	0	17	0	13	0	10	0	10	0
Total	67,168	109	66,598	105	64,323	113	44,112	95	53,909	121

Note: † Indicates that the highest number of total crashes reported in the 5-year period occurred in the same time period.

5-Year Trend Crashes by Time of Day



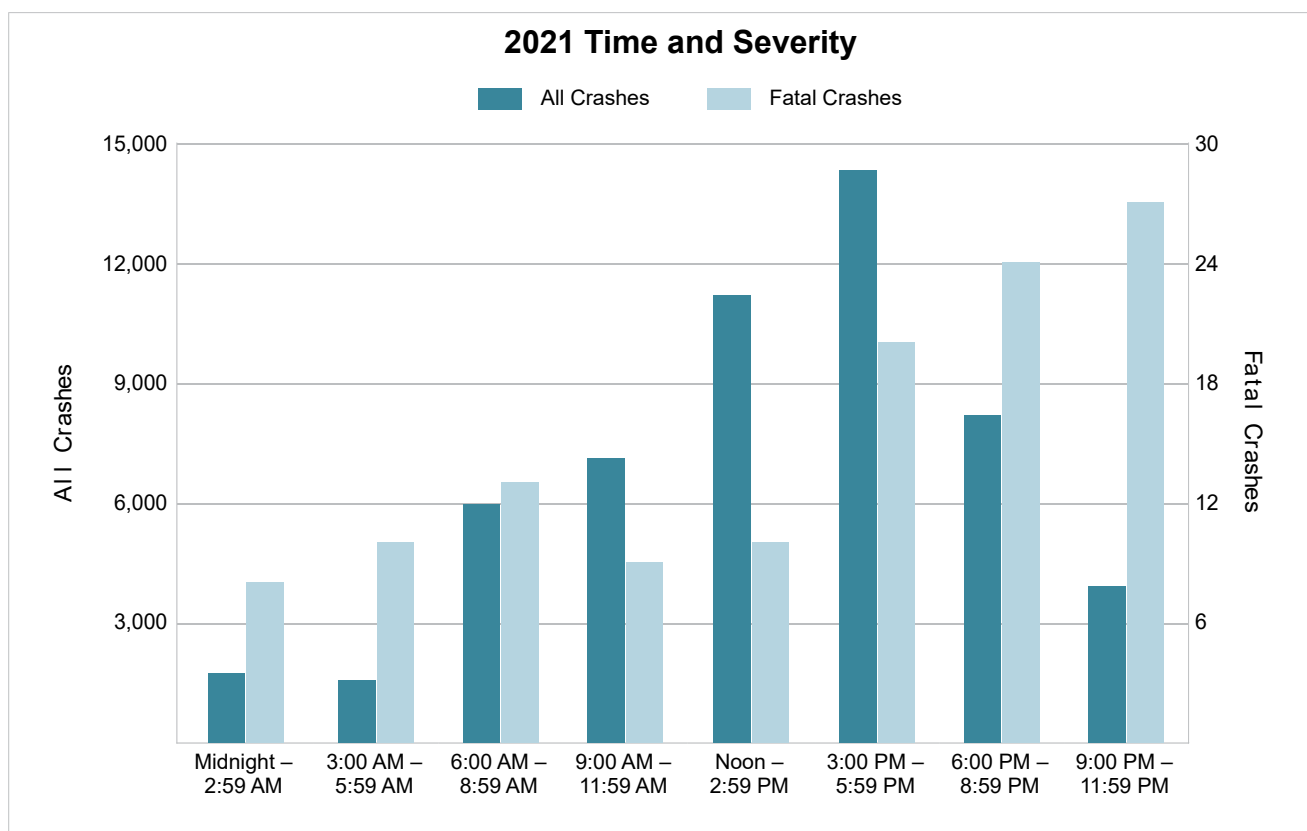
5-Year Trend Fatal Crashes by Time of Day



MSP Post 21 - Metro North (continued)

2021 - Time and Severity

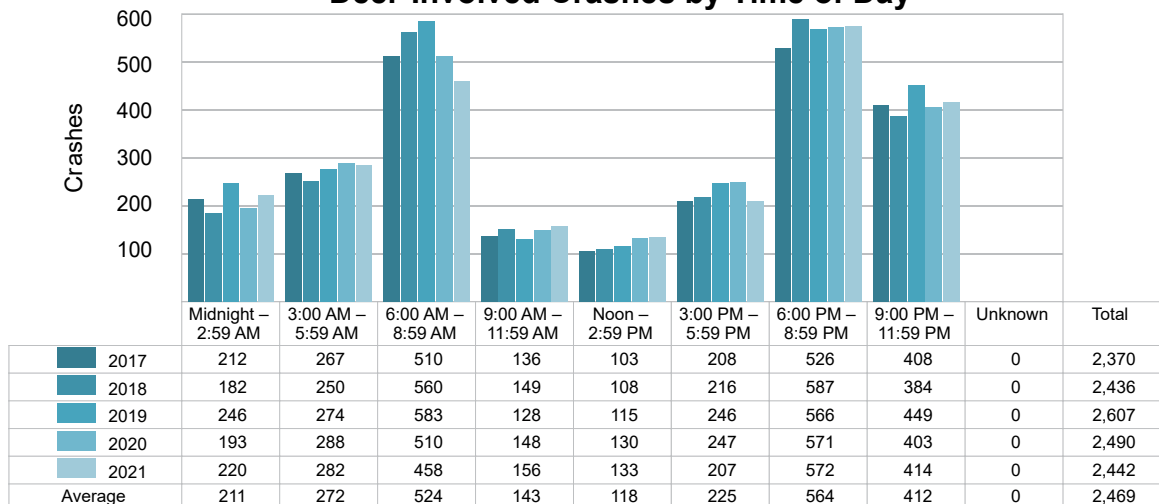
Time of Day	All Crashes		Fatal Crashes		Injury Crashes			PDO Crashes
	Number	% of Total	Number	% of Fatal	A	B	C	Number
Midnight – 2:59 AM	1,737	3.2	8	6.6	52	163	187	1,327
3:00 AM – 5:59 AM	1,548	2.9	10	8.3	32	131	171	1,204
6:00 AM – 8:59 AM	5,955	11.0	13	10.7	46	369	696	4,831
9:00 AM – 11:59 AM	7,101	13.2	9	7.4	55	486	849	5,702
Noon – 2:59 PM	11,169	20.7	10	8.3	109	733	1,339	8,978
3:00 PM – 5:59 PM	14,312	26.5	20	16.5	131	923	1,819	11,419
6:00 PM – 8:59 PM	8,178	15.2	24	19.8	123	567	977	6,487
9:00 PM – 11:59 PM	3,899	7.2	27	22.3	81	327	473	2,991
Unknown	10	0.0	0	0.0	0	0	0	10
Total	53,909	100.0	121	100.0	629	3,699	6,511	42,949



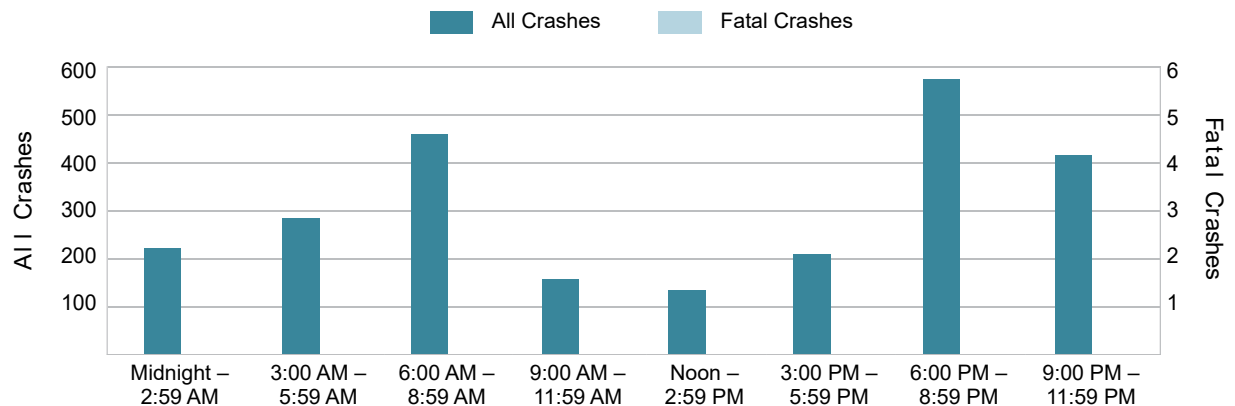
5-Year Trend - Deer-Involved Crashes by Time of Day

Time of Day	2017		2018		2019		2020		2021	
	Total Crashes	Fatal Crashes	Total Crashes	Fatal Crashes	Total Crashes	Fatal Crashes	Total Crashes	Fatal Crashes	Total Crashes	Fatal Crashes
Midnight – 2:59 AM	212	1	182	0	246	0	193	0	220	0
3:00 AM – 5:59 AM	267	0	250	0	274	0	288	0	282	0
6:00 AM – 8:59 AM	510	0	560	0	583	1	510	0	458	0
9:00 AM – 11:59 AM	136	0	149	0	128	0	148	0	156	0
Noon – 2:59 PM	103	0	108	0	115	0	130	0	133	0
3:00 PM – 5:59 PM	208	0	216	0	246	0	247	0	207	0
6:00 PM – 8:59 PM	526	0	587	0	566	0	571	0	572	0
9:00 PM – 11:59 PM	408	0	384	0	449	0	403	0	414	0
Unknown	0	0	0	0	0	0	0	0	0	0
Total	2,370	1	2,436	0	2,607	1	2,490	0	2,442	0

5-Year Trend Deer-Involved Crashes by Time of Day



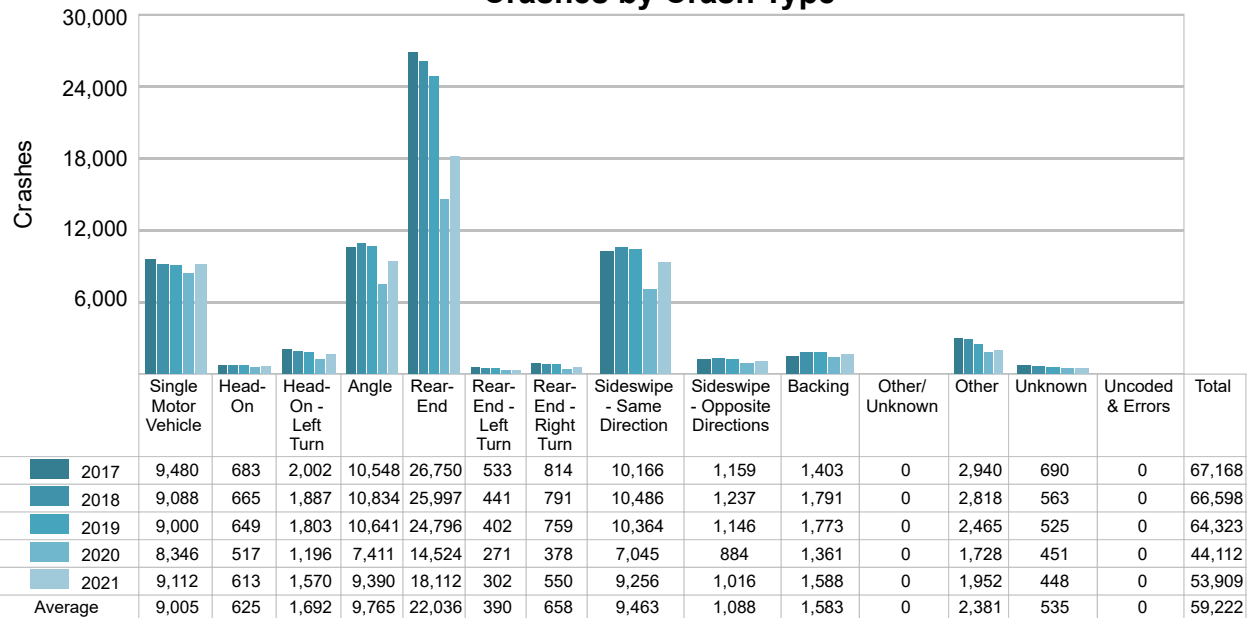
2021 Time and Severity of Deer-Involved Crashes



There were no fatal deer-involved crashes in MSP Post 21 - Metro North in 2021.

5-Year Trend - Crashes by Crash Type

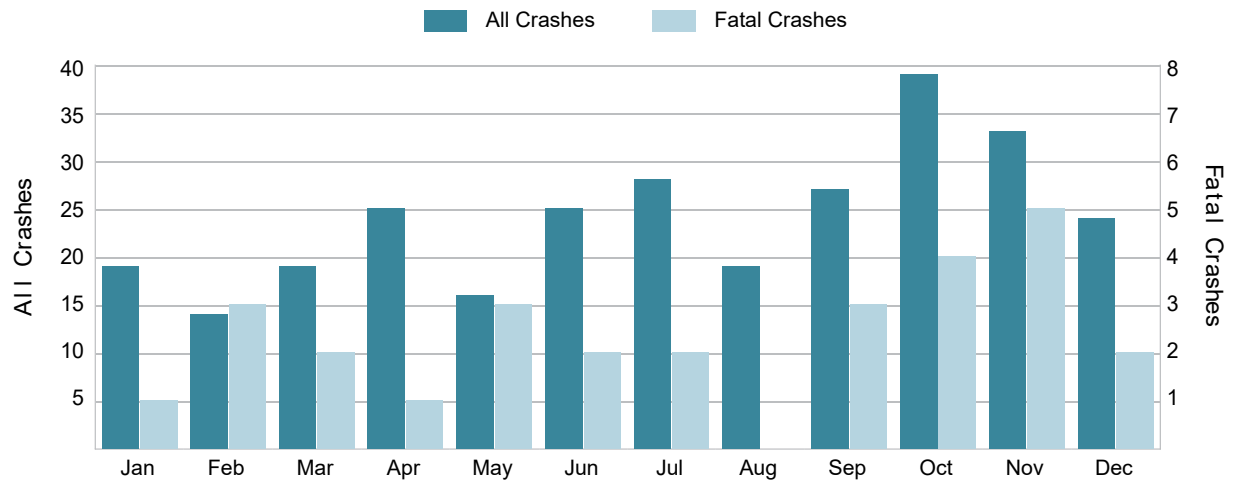
Crash Type	2017		2018		2019		2020		2021	
	Total Crashes	Fatal Crashes	Total Crashes	Fatal Crashes	Total Crashes	Fatal Crashes	Total Crashes	Fatal Crashes	Total Crashes	Fatal Crashes
Single Motor Vehicle	9,480	41	9,088	43	9,000	61	8,346	53	9,112	58
Head-On	683	18	665	12	649	9	517	9	613	8
Head-On - Left Turn	2,002	2	1,887	4	1,803	9	1,196	4	1,570	12
Angle	10,548	16	10,834	13	10,641	18	7,411	10	9,390	24
Rear-End	26,750	12	25,997	15	24,796	5	14,524	12	18,112	10
Rear-End - Left Turn	533	0	441	0	402	0	271	0	302	0
Rear-End - Right Turn	814	0	791	0	759	0	378	0	550	0
Sideswipe - Same Direction	10,166	2	10,486	2	10,364	2	7,045	1	9,256	0
Sideswipe - Opposite Directions	1,159	1	1,237	3	1,146	2	884	3	1,016	1
Backing	1,403	0	1,791	0	1,773	0	1,361	0	1,588	0
Other/Unknown	0	0	0	0	0	0	0	0	0	0
Other	2,940	16	2,818	13	2,465	7	1,728	3	1,952	8
Unknown	690	1	563	0	525	0	451	0	448	0
Uncoded & Errors	0	0	0	0	0	0	0	0	0	0
Total	67,168	109	66,598	105	64,323	113	44,112	95	53,909	121

5-Year Trend
Crashes by Crash Type

5-Year Trend - Pedestrian-Involved Crashes by Month

Month	2017		2018		2019		2020		2021	
	Total Crashes	Fatal Crashes	Total Crashes	Fatal Crashes	Total Crashes	Fatal Crashes	Total Crashes	Fatal Crashes	Total Crashes	Fatal Crashes
January	28	3	34	0	41	4	51	4	19	1
February	26	3	32	2	31	3	19	1	14	3
March	26	1	29	4	30	2	17	4	19	2
April	18	2	17	1	23	3	7	1	25	1
May	26	1	34	1	35	0	14	3	16	3
June	25	1	27	1	21	1	23	3	25	2
July	24	1	30	2	32	3	17	1	28	2
August	33	2	25	4	20	3	22	3	19	0
September	37	4	36	2	35	3	23	4	27	3
October	45	5	39	0	48	8	35	4	39	4
November	46	6	34	2	30	1	19	3	33	5
December	40	3	35	3	33	2	23	3	24	2
Total	374	32	372	22	379	33	270	34	288	28

2021 Pedestrian-Involved Crashes by Month

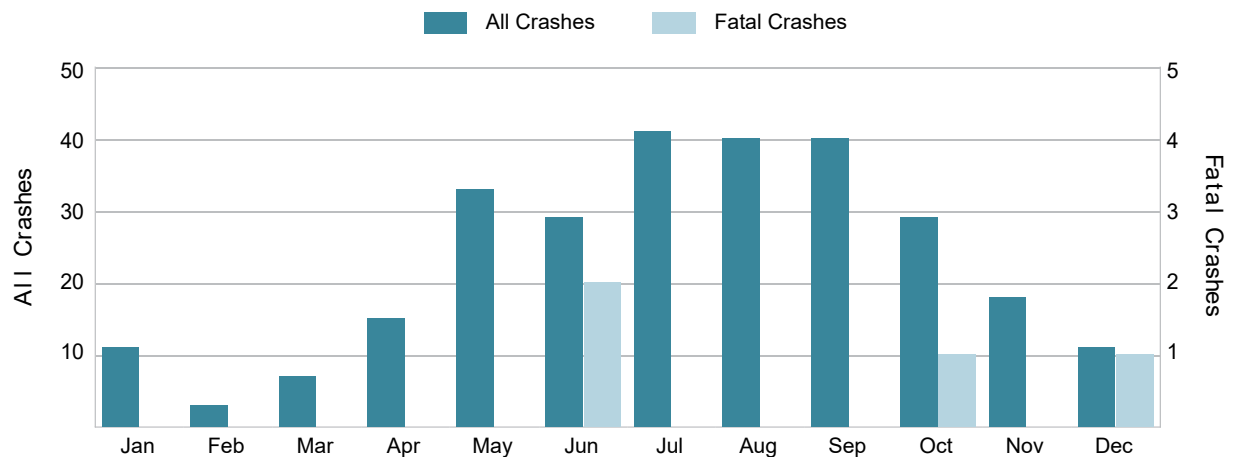


MSP Post 21 - Metro North (continued)

5-Year Trend - Bicyclist-Involved Crashes by Month

Month	2017		2018		2019		2020		2021	
	Total Crashes	Fatal Crashes	Total Crashes	Fatal Crashes	Total Crashes	Fatal Crashes	Total Crashes	Fatal Crashes	Total Crashes	Fatal Crashes
January	11	0	7	1	6	0	10	1	11	0
February	8	1	7	0	4	1	5	0	3	0
March	8	0	6	0	5	0	13	0	7	0
April	17	0	17	1	14	0	10	0	15	0
May	33	0	36	0	23	0	19	0	33	0
June	37	0	48	1	33	0	55	0	29	2
July	59	1	49	0	47	1	48	1	41	0
August	50	0	44	0	46	0	48	0	40	0
September	47	1	55	0	42	1	42	2	40	0
October	31	0	27	1	43	1	19	0	29	1
November	22	0	19	0	7	0	21	0	18	0
December	8	0	10	0	11	1	6	0	11	1
Total	331	3	325	4	281	5	296	4	277	4

2021 Bicyclist-Involved Crashes by Month



2021 - Reported Motor Vehicle Crashes by County

County	Crashes												
	Total	Fatal	Injury	Property Damage	Inter-State	US Route	State Route	Local Street	Alcohol-Involved	Drug-Involved	Deer-Involved	Pedestrian-Involved	Bicyclist-Involved
Macomb	21,871	57	4,619	17,195	1,689	0	5,717	14,429	610	181	589	128	141
Oakland	32,038	64	6,220	25,754	3,906	1,865	5,307	20,943	944	263	1,853	160	136
Total	53,909	121	10,839	42,949	5,595	1,865	11,024	35,372	1,554	444	2,442	288	277

2021 - People in Reported Motor Vehicle Crashes by County

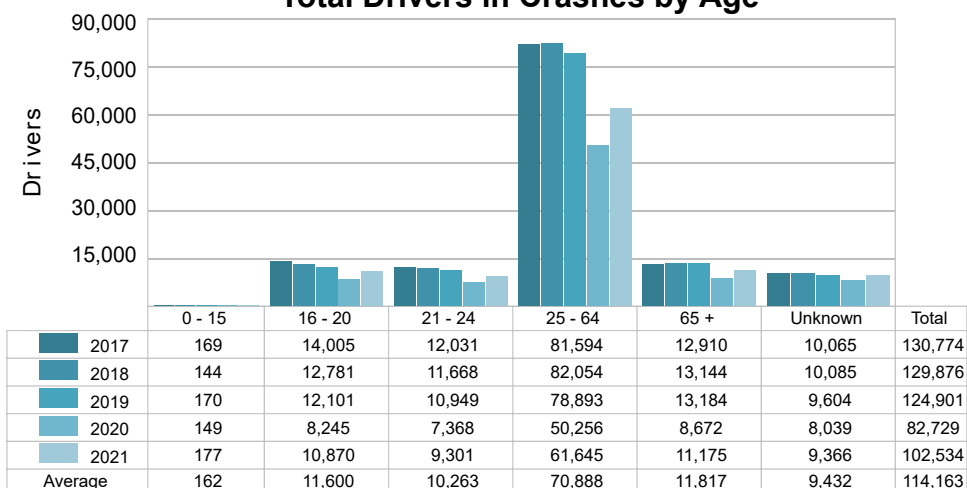
County	People					
	Fatalities	Suspected Serious Injuries	Suspected Minor Injuries	Possible Injuries	No Injuries	Uncoded & Errors
Macomb	59	642	3,540	7,603	37,290	4,450
Oakland	66	896	5,770	9,137	56,442	5,519
Total	125	1,538	9,310	16,740	93,732	9,969

MSP Post 21 - Metro North (continued)

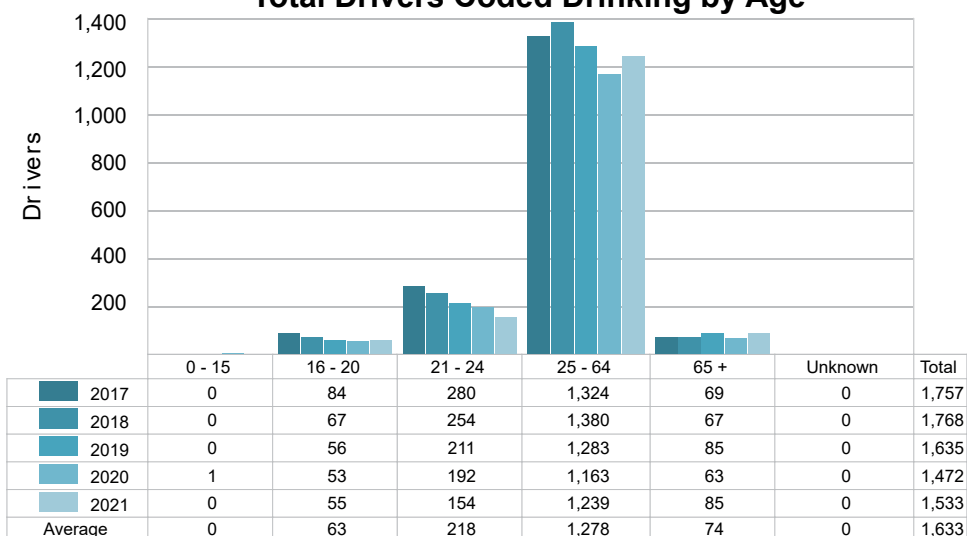
5-Year Trend - Drivers in Crashes Coded Drinking by Driver Age

Driver Age	2017		2018		2019		2020		2021	
	Total Drivers in Crashes	Total Drivers Coded Drinking	Total Drivers in Crashes	Total Drivers Coded Drinking	Total Drivers in Crashes	Total Drivers Coded Drinking	Total Drivers in Crashes	Total Drivers Coded Drinking	Total Drivers in Crashes	Total Drivers Coded Drinking
0 - 15	169	0	144	0	170	0	149	1	177	0
16 - 20	14,005	84	12,781	67	12,101	56	8,245	53	10,870	55
21 - 24	12,031	280	11,668	254	10,949	211	7,368	192	9,301	154
25 - 64	81,594	1,324	82,054	1,380	78,893	1,283	50,256	1,163	61,645	1,239
65 +	12,910	69	13,144	67	13,184	85	8,672	63	11,175	85
Unknown	10,065	0	10,085	0	9,604	0	8,039	0	9,366	0
Total	130,774	1,757	129,876	1,768	124,901	1,635	82,729	1,472	102,534	1,533

5-Year Trend Total Drivers in Crashes by Age



5-Year Trend Total Drivers Coded Drinking by Age



2021 - Bodily Alcohol Concentration (BAC) Results Among All Vehicle Drivers in Alcohol-Involved Crashes by Age

Age Group	Drivers				BAC Result Range for Drivers Coded Drinking				
	Total Drivers in Alcohol-Involved Crashes	Total Drivers Tested in all Crashes	Total Drivers Coded Drinking, Tested	Total Drivers Coded Drinking	BAC = 0.00	BAC 0.01 g/dL to 0.07 g/dL	BAC 0.08 g/dL to 0.16 g/dL	BAC 0.17 g/dL and Above	BAC Not Reported
0 - 15	3	0	0	0	0	0	0	0	0
16 - 20	120	76	50	55	0	5	23	12	15
21 - 24	236	173	136	154	0	15	50	33	56
25 - 64	1,815	1,403	1,121	1,239	0	57	286	426	470
65 +	143	107	83	85	0	9	20	28	28
Unknown	246	0	0	0	0	0	0	0	0
Total	2,563	1,759	1,390	1,533	0	86	379	499	569

Notes: BAC measured in grams (g) per deciliter (dL).

BAC may not be reported if drivers are not tested or if the results are not available immediately (as in the case of a blood test).

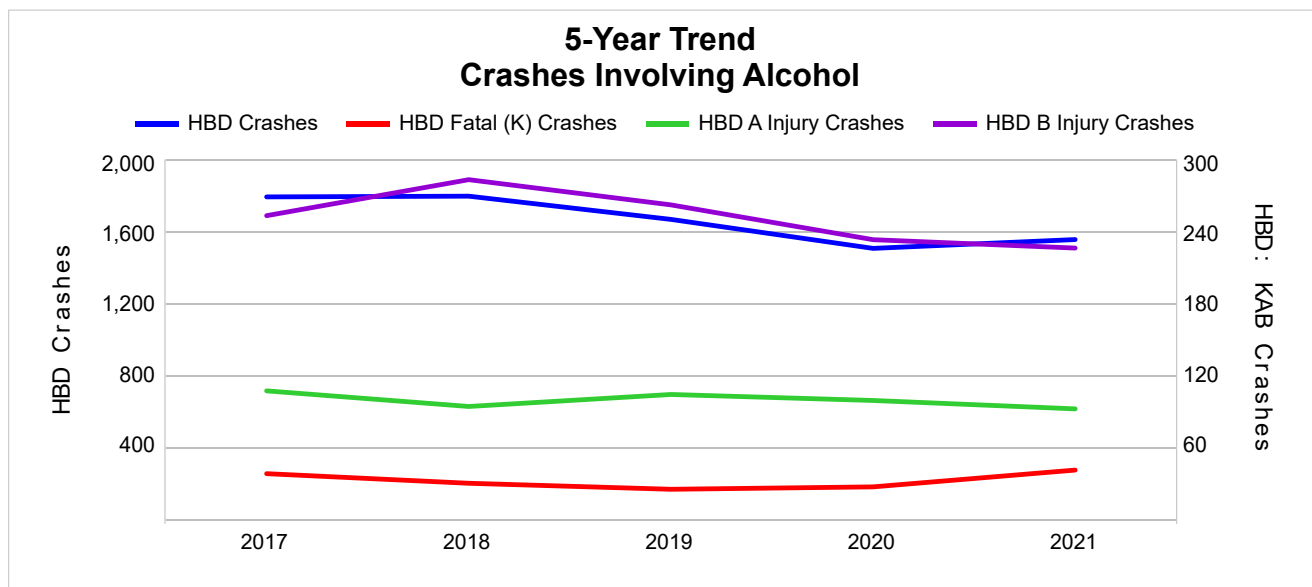
A driver may be coded by the officer as drinking even though no test is administered.

5-Year Trend - Crashes Involving Alcohol

Year	All Crashes	HBD Crashes	% HBD	Fatal Crashes	HBD Fatal Crashes	% HBD	A Injury Crashes	HBD A Injury Crashes	% HBD	B Injury Crashes	HBD B Injury Crashes	% HBD
2017	67,168	1,791	2.7	109	38	34.9	692	107	15.5	3,978	253	6.4
2018	66,598	1,795	2.7	105	30	28.6	647	94	14.5	3,892	283	7.3
2019	64,323	1,666	2.6	113	25	22.1	587	104	17.7	3,803	262	6.9
2020	44,112	1,505	3.4	95	27	28.4	548	99	18.1	2,951	233	7.9
2021	53,909	1,554	2.9	121 **	41 **	33.9	629	92 *	14.6	3,699	226 *	6.1 *

Note: * Indicates that the most recent year is the lowest number or percentage reported in the 5-year period in that column.

** Indicates that the most recent year is the highest number or percentage reported in the 5-year period in that column.



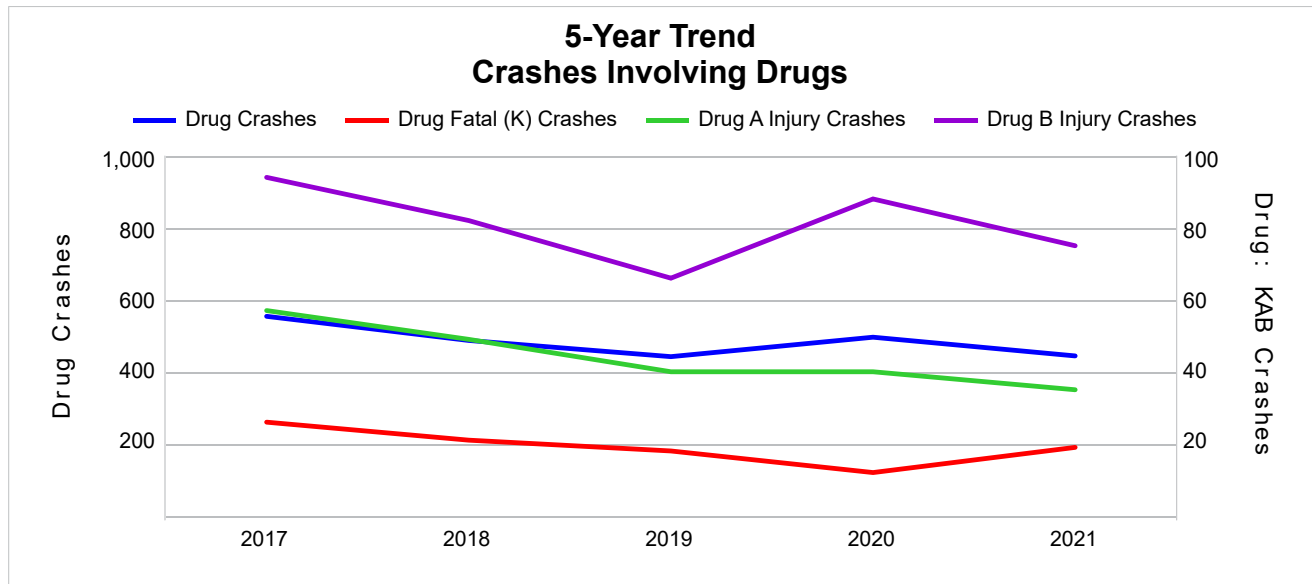
Note: Had-Been-Drinking (HBD)

5-Year Trend - Crashes Involving Drugs

Year	All Crashes	Drug Crashes	% Drug	Fatal Crashes	Drug Fatal Crashes	% Drug	A Injury Crashes	Drug A Injury Crashes	% Drug	B Injury Crashes	Drug B Injury Crashes	% Drug
2017	67,168	554	0.8	109	26	23.9	692	57	8.2	3,978	94	2.4
2018	66,598	487	0.7	105	21	20.0	647	49	7.6	3,892	82	2.1
2019	64,323	442	0.7	113	18	15.9	587	40	6.8	3,803	66	1.7
2020	44,112	496	1.1	95	12	12.6	548	40	7.3	2,951	88	3.0
2021	53,909	444	0.8	121 **	19	15.7	629	35 *	5.6 *	3,699	75	2.0

Note: * Indicates that the most recent year is the lowest number or percentage reported in the 5-year period in that column.

** Indicates that the most recent year is the highest number or percentage reported in the 5-year period in that column.

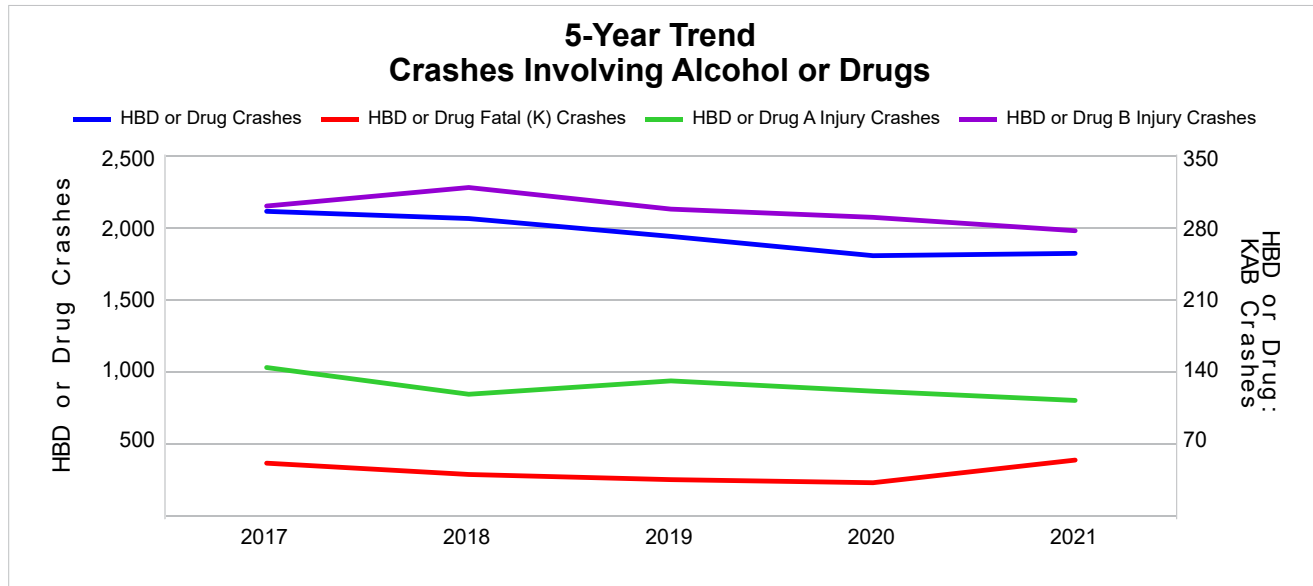


5-Year Trend - Crashes Involving Alcohol or Drugs

Year	All Crashes	HBD or Drug Crashes	% HBD or Drug	Fatal Crashes	HBD or Drug Fatal Crashes	% HBD or Drug	A Injury Crashes	HBD or Drug A Injury Crashes	% HBD or Drug	B Injury Crashes	HBD or Drug B Injury Crashes	% HBD or Drug
2017	67,168	2,106	3.1	109	50	45.9	692	143	20.7	3,978	300	7.5
2018	66,598	2,056	3.1	105	39	37.1	647	117	18.1	3,892	318	8.2
2019	64,323	1,932	3.0	113	34	30.1	587	130	22.1	3,803	297	7.8
2020	44,112	1,798	4.1	95	31	32.6	548	120	21.9	2,951	289	9.8
2021	53,909	1,814	3.4	121 **	53 **	43.8	629	111 *	17.6 *	3,699	276 *	7.5 *

Note: * Indicates that the most recent year is the lowest number or percentage reported in the 5-year period in that column.

** Indicates that the most recent year is the highest number or percentage reported in the 5-year period in that column.



Note: Had-Been-Drinking (HBD)

2021 - Restraints Worn Among Vehicle Drivers and Injured Passengers by Vehicle Type

Vehicle Type	Total Occupants			Fatalities			A - Suspected Serious			B - Suspected Minor			C - Possible Injury			No Injury		
	Total	Used Restraint	%	Total	Used Restraint	%	Total	Used Restraint	%	Total	Used Restraint	%	Total	Used Restraint	%	Total	Used Restraint	%
Passenger Car, SUV, Van	88,681	79,575	89.7	63	34	54.0	461	349	75.7	3,740	3,529	94.4	8,608	8,277	96.2	69,047	67,386	97.6
Motor Home	114	111	97.4	0	0	0.0	0	0	0.0	5	5	100.0	9	9	100.0	99	97	98.0
Pickup Truck	10,541	9,291	88.1	9	3	33.3	43	30	69.8	259	238	91.9	668	649	97.2	8,561	8,371	97.8
Small Truck Under 10,000 lbs. GVWR	377	327	86.7	1	0	0.0	4	3	75.0	9	9	100.0	21	21	100.0	296	294	99.3
Motorcycle	492	274	55.7	16	9	56.3	100	51	51.0	176	112	63.6	74	46	62.2	100	56	56.0
Moped/Goped	48	12	25.0	0	0	0.0	10	2	20.0	21	7	33.3	11	1	9.1	4	2	50.0
Go-Cart/Golf Cart	14	1	7.1	0	0	0.0	3	0	0.0	2	0	0.0	2	0	0.0	6	1	16.7
Snowmobile	3	0	0.0	0	0	0.0	0	0	0.0	0	0	0.0	1	0	0.0	2	0	0.0
Off-Road Vehicle (ORV)/All-Terrain Vehicle (ATV)	29	5	17.2	1	0	0.0	6	1	16.7	10	1	10.0	4	1	25.0	6	2	33.3
Other (non-registered farm equipment, construction equipment, snow plows, etc.)	204	122	59.8	2	1	50.0	6	2	33.3	6	3	50.0	8	4	50.0	133	112	84.2
Truck/Bus (over 10,000 lbs. GVWR/8+ occupants/hazmat placard)	3,173	2,823	89.0	1	1	100.0	6	4	66.7	36	29	80.6	93	74	79.6	2,787	2,715	97.4
Uncoded & Errors	1,744	2	0.1	0	0	0.0	0	0	0.0	0	0	0.0	1	1	100.0	1	1	100.0
Total	105,420	92,543	87.8	93	48	51.6	639	442	69.2	4,264	3,933	92.2	9,500	9,083	95.6	81,042	79,037	97.5

Note: Restraint Use includes shoulder belt only used, lap belt only used, both lap and shoulder belts used, child restraint used, restraint failure, and helmet worn.

2021 - Restraints Worn Among Vehicle Drivers and Injured Passengers by Age

Age Group	Total Occupants			Fatalities			A - Suspected Serious			B - Suspected Minor			C - Possible Injury			No Injury		
	Total	Used Restraint	%	Total	Used Restraint	%	Total	Used Restraint	%	Total	Used Restraint	%	Total	Used Restraint	%	Total	Used Restraint	%
0 - 15	877	781	89.1	2	0	0.0	19	5	26.3	140	118	84.3	570	535	93.9	143	123	86.0
16 - 20	11,304	10,935	96.7	7	2	28.6	72	47	65.3	503	468	93.0	975	921	94.5	9,695	9,497	98.0
21 - 24	9,523	9,135	95.9	5	2	40.0	53	31	58.5	467	416	89.1	891	842	94.5	8,060	7,844	97.3
25 - 64	62,819	60,450	96.2	58	32	55.2	406	278	68.5	2,566	2,365	92.2	5,845	5,600	95.8	53,549	52,175	97.4
65 +	11,529	11,236	97.5	21	12	57.1	89	81	91.0	588	566	96.3	1,216	1,184	97.4	9,585	9,393	98.0
Unknown	9,368	6	0.1	0	0	0.0	0	0	0.0	0	0	0.0	3	1	33.3	10	5	50.0
Total	105,420	92,543	87.8	93	48	51.6	639	442	69.2	4,264	3,933	92.2	9,500	9,083	95.6	81,042	79,037	97.5

Note: Restraint Use includes shoulder belt only used, lap belt only used, both lap and shoulder belts used, child restraint used, restraint failure, and helmet worn.

5-Year Trend - Restraint Use Among Drivers

Restraint Use	2017			2018			2019			2020			2021		
	Drivers	Fatal Drivers	Injured Drivers	Drivers	Fatal Drivers	Injured Drivers	Drivers	Fatal Drivers	Injured Drivers	Drivers	Fatal Drivers	Injured Drivers	Drivers	Fatal Drivers	Injured Drivers
No Belts Available	75	1	12	41	0	8	85	0	12	48	0	8	71	3	20
Shoulder Belt Only Used	203	0	26	135	0	19	144	0	23	98	0	16	173	2	36
Lap Belt Only Used	83	0	10	84	0	7	69	0	11	62	0	9	66	0	15
Both Lap & Shoulder Belt Used	116,696	29	12,894	116,148	33	12,613	111,906	27	12,001	71,864	23	8,330	89,424	32	10,602
No Belts Used	361	15	200	349	8	173	345	18	170	352	8	179	443	17	239
Child Restraint Used - Forward Facing	2	0	1	1	0	0	1	0	0	0	0	0	0	0	0
Child Restraint Not Used, Unavailable or Improper Use	0	0	0	0	0	0	0	0	0	0	0	0	0	0	0
Child Restraint Used - Rear Facing	0	0	0	0	0	0	0	0	0	0	0	0	0	0	0
Child Restraint Used - Booster Seat	0	0	0	0	0	0	0	0	0	0	0	0	0	0	0
Restraint Failure	10	0	1	7	0	1	7	0	1	5	0	0	4	0	1
Restraint Use Unknown	9,891	4	272	9,772	5	213	9,176	4	200	7,339	3	185	9,161	11	229
Helmet Worn	369	8	268	313	11	221	297	5	213	264	8	200	279	9	212
Helmet Not Worn	146	8	105	138	8	105	118	4	97	179	4	143	211	5	161
Helmet Use Unknown	22	1	10	19	1	11	17	0	10	25	1	13	23	2	14
Uncoded & Errors	2,916	0	0	2,869	0	0	2,736	0	0	2,493	0	0	2,679	0	0
Total	130,774	66	13,799	129,876	66	13,371	124,901	58	12,738	82,729	47	9,083	102,534	81	11,529

5-Year Trend - Restraint Use Among Drivers Coded Drinking

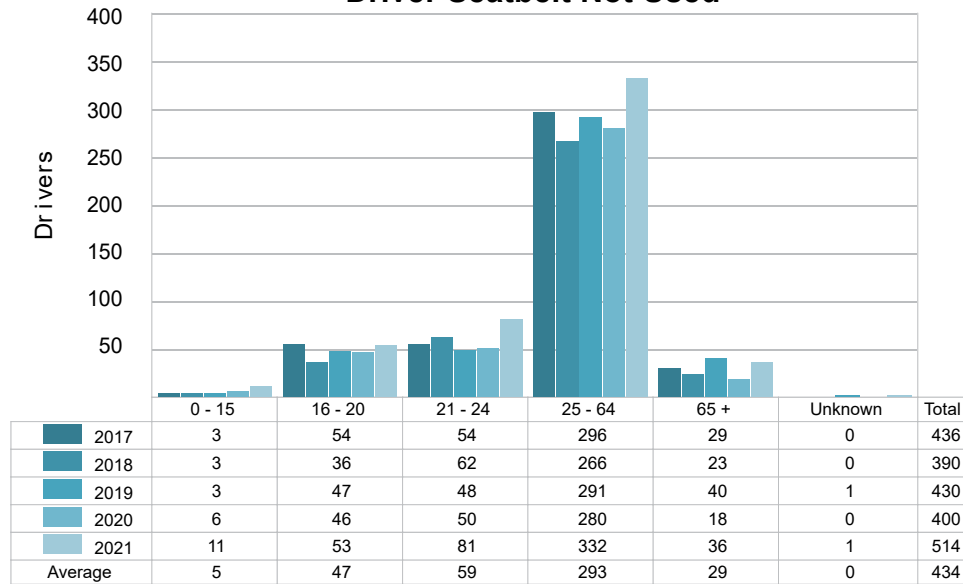
Restraint Use	2017			2018			2019			2020			2021		
	Drivers	Fatal Drivers	Injured Drivers	Drivers	Fatal Drivers	Injured Drivers	Drivers	Fatal Drivers	Injured Drivers	Drivers	Fatal Drivers	Injured Drivers	Drivers	Fatal Drivers	Injured Drivers
No Belts Available	0	0	0	2	0	0	2	0	2	2	0	1	4	1	2
Shoulder Belt Only Used	1	0	0	0	0	0	5	0	1	1	0	0	0	0	0
Lap Belt Only Used	0	0	0	0	0	0	2	0	1	3	0	1	1	0	1
Both Lap & Shoulder Belt Used	1,427	6	332	1,450	2	350	1,359	4	343	1,175	1	319	1,218	6	303
No Belts Used	60	6	40	72	4	46	58	6	34	62	1	41	85	7	51
Child Restraint Used - Forward Facing	0	0	0	0	0	0	0	0	0	0	0	0	0	0	0
Child Restraint Not Used, Unavailable or Improper Use	0	0	0	0	0	0	0	0	0	0	0	0	0	0	0
Child Restraint Used - Rear Facing	0	0	0	0	0	0	0	0	0	0	0	0	0	0	0
Child Restraint Used - Booster Seat	0	0	0	0	0	0	0	0	0	0	0	0	0	0	0
Restraint Failure	0	0	0	0	0	0	0	0	0	0	0	0	0	0	0
Restraint Use Unknown	240	0	64	218	3	55	182	1	50	193	2	47	190	1	44
Helmet Worn	8	1	6	12	2	9	6	1	3	9	1	8	7	1	6
Helmet Not Worn	19	2	16	14	2	11	19	0	18	26	2	20	27	3	20
Helmet Use Unknown	2	0	2	0	0	0	2	0	2	1	0	1	1	1	0
Uncoded & Errors	0	0	0	0	0	0	0	0	0	0	0	0	0	0	0
Total	1,757	15	460	1,768	13	471	1,635	12	454	1,472	7	438	1,533	20	427

5-Year Trend - Seatbelt Not Used Among Drivers by Age

Age Group	2017			2018			2019			2020			2021		
	Drivers	Fatal Drivers	Injured Drivers	Drivers	Fatal Drivers	Injured Drivers	Drivers	Fatal Drivers	Injured Drivers	Drivers	Fatal Drivers	Injured Drivers	Drivers	Fatal Drivers	Injured Drivers
0 - 15	3	0	1	3	0	1	3	0	0	6	0	3	11	0	3
16 - 20	54	3	27	36	0	17	47	0	26	46	0	26	53	1	28
21 - 24	54	2	30	62	2	35	48	4	22	50	1	25	81	2	51
25 - 64	296	7	143	266	4	120	291	8	120	280	5	126	332	14	163
65 +	29	4	11	23	2	8	40	6	14	18	2	7	36	3	14
Unknown	0	0	0	0	0	0	1	0	0	0	0	0	1	0	0
Total	436	16	212	390	8	181	430	18	182	400	8	187	514	20	259

Note: Seatbelt Not Used includes no belts available or no belts used.

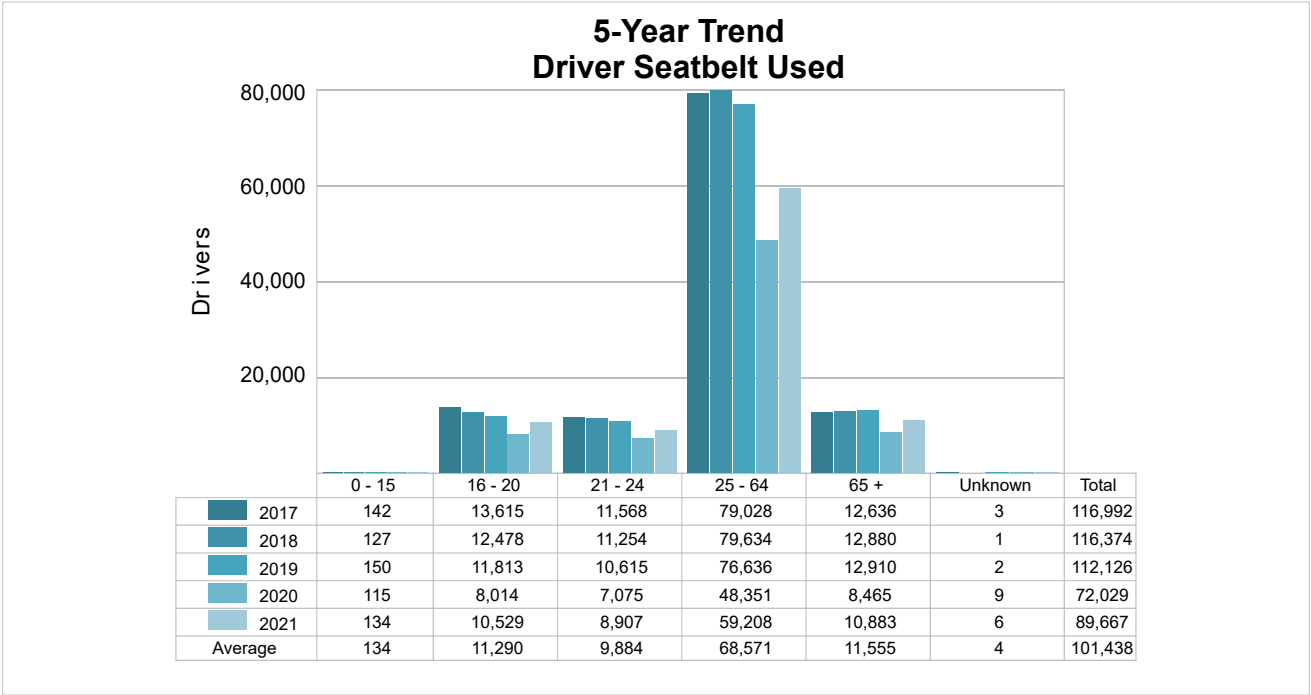
5-Year Trend Driver Seatbelt Not Used



5-Year Trend - Seatbelt Used Among Drivers by Age

Age Group	2017			2018			2019			2020			2021		
	Drivers	Fatal Drivers	Injured Drivers	Drivers	Fatal Drivers	Injured Drivers	Drivers	Fatal Drivers	Injured Drivers	Drivers	Fatal Drivers	Injured Drivers	Drivers	Fatal Drivers	Injured Drivers
0 - 15	142	0	10	127	0	10	150	0	10	115	0	9	134	0	11
16 - 20	13,615	2	1,281	12,478	1	1,203	11,813	2	1,043	8,014	1	832	10,529	1	1,035
21 - 24	11,568	4	1,254	11,254	3	1,199	10,615	5	1,098	7,075	2	786	8,907	2	1,070
25 - 64	79,028	15	8,730	79,634	15	8,592	76,636	8	8,250	48,351	11	5,575	59,208	22	7,050
65 +	12,636	8	1,655	12,880	14	1,636	12,910	12	1,635	8,465	9	1,153	10,883	9	1,487
Unknown	3	0	1	1	0	0	2	0	0	9	0	0	6	0	1
Total	116,992	29	12,931	116,374	33	12,640	112,126	27	12,036	72,029	23	8,355	89,667	34	10,654

Note: Seatbelt Used includes shoulder belt only used, lap belt only used, both lap and shoulder belts used, and restraint failure.



MSP Post 21 - Metro North (continued)

5-Year Trend - Drivers in Crashes by Hazardous Action

Hazardous Action	2017		2018		2019		2020		2021	
	Total Drivers in Crashes	Drivers in Fatal Crashes	Total Drivers in Crashes	Drivers in Fatal Crashes	Total Drivers in Crashes	Drivers in Fatal Crashes	Total Drivers in Crashes	Drivers in Fatal Crashes	Total Drivers in Crashes	Drivers in Fatal Crashes
None	63,059	100	62,558	89	60,006	77	38,887	72	48,558	84
Speed Too Fast	3,549	10	3,532	14	3,429	11	2,700	10	3,117	26
Speed Too Slow	18	0	26	1	19	0	18	0	17	0
Failed to Yield	12,712	12	13,244	10	12,888	15	8,310	6	10,958	19
Disregard Traffic Control	2,076	5	2,144	5	2,037	7	1,798	5	2,007	9
Drove Wrong Way	68	1	75	0	66	0	67	1	95	1
Drove Left of Center	543	11	520	9	486	9	384	5	468	4
Improper Passing	501	0	551	2	616	0	382	0	554	0
Improper Lane Use	3,698	0	3,703	1	3,687	0	2,452	1	3,228	2
Improper Turn	1,156	1	1,126	0	1,115	1	826	0	1,035	0
Improper/No Signal	104	0	71	0	99	0	39	0	57	0
Improper Backing	1,638	0	1,710	1	1,657	0	1,253	0	1,458	0
Unable to Stop in Assured Clear Distance	25,474	8	24,537	10	23,485	4	13,317	10	16,679	6
Other	4,188	11	4,465	15	4,195	20	3,229	9	3,820	7
Unknown	6,897	21	6,738	16	6,632	22	5,269	18	6,354	26
Reckless Driving	419	6	385	6	328	6	347	11	350	9
Careless/Negligent Driving	2,422	7	2,192	6	1,967	2	1,557	4	1,733	2
Uncoded & Errors	2,252	2	2,299	0	2,189	4	1,894	1	2,046	0
Total	130,774	195	129,876	185	124,901	178	82,729	153	102,534	195

Office of Highway Safety Planning

Physical Address:
7150 Harris Drive
Dimondale, Michigan 48821

Mailing Address:
P.O. Box 30634
Lansing, Michigan 48909

Find us on the web:
MichiganTrafficCrashFacts.org
mtcf-info@umich.edu

