



2021

MTCF
Michigan Traffic
Crash Facts

Michigan Traffic Crash Facts

Reporting Criteria

Please pay particular attention to the wording when interpreting the three levels of data gathered for this report.

Crash

The Crash Level analyzes data related to crash events and returns one result per crash.

Examples: Time, weather, and location.

Units

The Units Level analyzes the experience of the units in the crash and returns one result per vehicle, driver, pedestrian, bicyclist, or train.

Examples: Vehicle type, driver condition, and unit events.

People

The People Level analyzes the experience of the people involved in the crash and returns one result per occupant/person/party.

Examples: Age, injury severity, and seat belt or helmet use.

KABCO Injury Indicator:

K = Killed

A = Suspected Serious Injury

B = Suspected Minor Injury

C = Possible Injury

O = No Injury

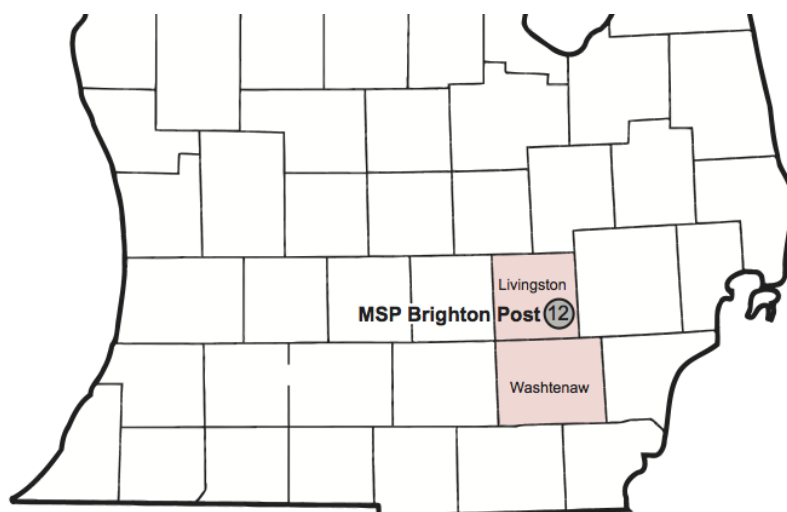
Property Damage Only (PDO)



Michigan State Police (MSP) Post 12 - Brighton

2021 Traffic Crash Data & 2017-2021 5-Year Trends

MSP Post 12 - Brighton is comprised of Livingston and Washtenaw counties. Trend tables for this report are based on those counties.



Sources:

The crashes in this report occurred on public roadways in Michigan and resulted in injuries, fatalities, or property damage (with \$1,000 as a reporting threshold). The information was gathered from Michigan Traffic Crash Report Forms (UD-10) submitted by local police departments, sheriff's offices, and the Michigan State Police. Other related information was obtained from the departments of Transportation, State, and Community Health.

MSP Post 12 - Brighton

- There were 13,053 crashes in Post 12 during 2021. [Page 1]
- A total of 42 fatalities resulted from 40 fatal crashes in 2021 in Post 12. [Page 1]
- There were 2,943 injuries and 2,177 injury crashes. [Page 1]
- There were 10,836 property damage only crashes (no fatalities or injuries). [Page 1]
- November had the highest number of crashes (1,543). [Pages 1-2]
- October had the highest number of fatal crashes (9) and fatalities (9). [Pages 1-2]
- September had the highest number of injury crashes (251) and injuries (351). [Page 1]
- November had the highest number of property damage only crashes (1,349). [Page 1]
- Of all vehicles involved in fatal crashes, 7 (10.3%) were motorcycles. [Page 1]
- Friday was the day of the week with the highest number of crashes (2,210) and Tuesday had the highest number of fatal crashes (8). [Pages 2-3]
- The 3:00 PM – 5:59 PM time period had the highest number of crashes (3,128). This holds true for every year between 2017 and 2021. The 6:00 PM – 8:59 PM time period had the highest number of fatal crashes (8). [Pages 5-6]
- During the period from 2017 to 2021, the highest number of deer crashes occurred in 2021 (2,028). The 6:00 PM – 8:59 PM time period had the highest number of deer-involved crashes. There were 0 fatal crashes involving deer in 2021. [Page 7]
- Washtenaw County (66.4%) had the highest number of crashes in Post 12 in 2021, followed by Livingston County (33.6%). [Page 11]
- Washtenaw County (71.4%) had the highest number of fatalities in Post 12 in 2021, followed by Livingston County (28.6%). [Page 11]
- The highest number of drivers in crashes (28,646) occurred during 2019 and the highest number of drivers coded drinking in crashes (538) occurred during 2017 within the five year period between 2017 and 2021. [Page 12]
- A total of 472 crashes involved alcohol in 2021. [Page 13]
- Alcohol-involved fatal crashes were the highest in 2017 during the five-year period from 2017 to 2021 at 18. [Page 13]
- A total of 191 crashes, 11 fatal crashes, and 13 suspected injury crashes involved drugs in 2021. [Page 14]
- There were 19,722 drivers wearing seatbelts and 127 drivers not wearing seatbelts in crashes in 2021. Of the 127 drivers not wearing seatbelts, 10 (7.9%) were killed and 61 (48.0%) were injured. [Pages 17-19]
- The most common hazardous action coded for drivers in 2021 in all crashes was unable to stop in assured clear distance (3,040), while the most common hazardous action coded for drivers in fatal crashes was careless/negligent driving (9). [Page 20]

2021 - Crashes and Injury by Month

Month	Crashes				People	
	Total	Fatal	Injury	Property Damage Only (PDO)	Fatalities	Injuries
January	981	5	135	841	5	173
February	979	2	122	855	2	156
March	673	1	100	572	1	122
April	770	2	145	623	2	187
May	936	5	173	758	6	232
June	1,073	2	207	864	2	295
July	998	3	231	764	3	343
August	1,132	4	224	904	5	313
September	1,203	2	251	950	2	351
October	1,522	9	239	1,274	9	306
November	1,543	4	190	1,349	4	242
December	1,243	1	160	1,082	1	223
Total	13,053	40	2,177	10,836	42	2,943

2021 - Driver Statistics

Age Group	MSP Post 12 - Brighton			Driver Rates	
	2019 Population*	Licensed Drivers	Drivers in Crashes	Per 10k Population	Per 10k Licensed
0 - 15	94,308	3,127	42	4.5	134.3
16 - 20	50,549	27,000	2,693	532.8	997.4
21 - 24	45,243	26,932	2,332	515.4	865.9
25 - 64	281,757	266,475	13,002	461.5	487.9
65 +	87,739	89,132	2,366	269.7	265.4
Unknown	0	0	1,581	--	--
Total	559,596	412,666	22,016	393.4	533.5

*2021 Population of Michigan Counties (by single-year of age) not yet available from U.S. Census Bureau.

2021 - Vehicles in Crashes

Vehicle Type	Motor Vehicles		Fatal Crashes		Injury Crashes	PDO Crashes
	Number of Vehicles	% of Total	Number	% of Total	Number	Number
Passenger Car, SUV, Van	18,175	82.6	42	61.8	3,246	14,887
Motor Home	137	0.6	1	1.5	20	116
Pickup Truck	2,249	10.2	11	16.2	365	1,873
Small Truck Under 10,000 lbs. GVWR	133	0.6	0	0.0	19	114
Motorcycle	142	0.6	7	10.3	97	38
Moped/Goped	11	0.0	0	0.0	10	1
Go-Cart/Golf Cart	2	0.0	0	0.0	2	0
Snowmobile	1	0.0	0	0.0	1	0
Off-Road Vehicle (ORV)/All-Terrain Vehicle (ATV)	6	0.0	0	0.0	5	1
Other (non-registered farm equipment, construction equipment, snow plows, etc.)	56	0.3	1	1.5	6	49
Truck/Bus (over 10,000 lbs. GVWR/8+ occupants/hazmat placard)	792	3.6	6	8.8	126	660
Uncoded & Errors	312	1.4	0	0.0	33	279
Total	22,016	100.0	68	100.0	3,930	18,018

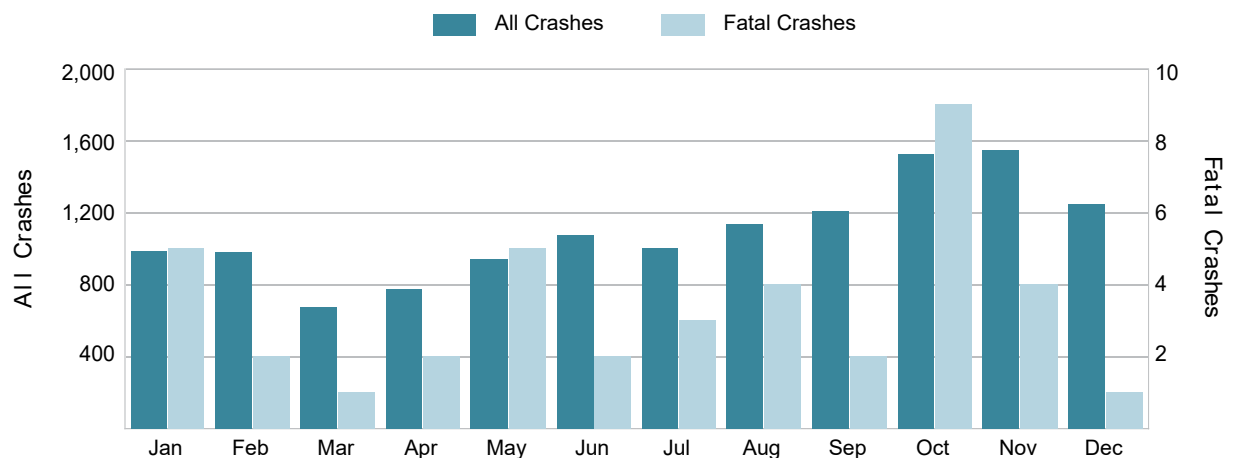
5-Year Trend - Crashes by Month

Month	2017		2018		2019		2020		2021	
	Total Crashes	Fatal Crashes	Total Crashes	Fatal Crashes	Total Crashes	Fatal Crashes	Total Crashes	Fatal Crashes	Total Crashes	Fatal Crashes
January	1,313	5	1,684	4	1,582	3	1,334	1	981	5
February	1,058	3	1,381	4	1,401	0	1,372	4	979	2
March	1,388	3	1,311	4	1,183	4	635	3	673	1
April	1,079	5	1,163	3	1,131	6	330	0	770	2
May	1,274	6	1,237	2	1,273	1	557	3	936	5
June	1,211	5	1,204	3	1,268	4	879	6	1,073	2
July	1,076	7	1,091	4	1,263	0	861	7	998	3
August	1,136	4	1,166	4	1,223	5	858	3	1,132	4
September	1,221	3	1,223	4	1,276	0	865	2	1,203	2
October	1,619	5	1,534	2	1,618	3	1,092	6	1,522	9
November	1,658	5	1,643	0	1,796	8	1,096	6	1,543	4
December	1,908	2	1,364	3	1,358	4	873	3	1,243	1
Total	15,941	53	16,001	37	16,372	38	10,752	44	13,053	40

5-Year Trend - Crashes by Day of Week

Day	2017		2018		2019		2020		2021	
	Total Crashes	Fatal Crashes	Total Crashes	Fatal Crashes	Total Crashes	Fatal Crashes	Total Crashes	Fatal Crashes	Total Crashes	Fatal Crashes
Monday	2,374	7	2,354	3	2,660	6	1,437	7	1,893	6
Tuesday	2,439	8	2,637	6	2,544	4	1,527	5	2,044	8
Wednesday	2,422	12	2,385	7	2,657	8	1,909	5	1,879	3
Thursday	2,562	5	2,654	2	2,497	3	1,628	1	1,899	4
Friday	2,718	7	2,665	6	2,636	3	1,806	9	2,210	5
Saturday	1,860	6	1,915	6	1,832	9	1,325	8	1,792	7
Sunday	1,566	8	1,391	7	1,546	5	1,120	9	1,336	7
Total	15,941	53	16,001	37	16,372	38	10,752	44	13,053	40

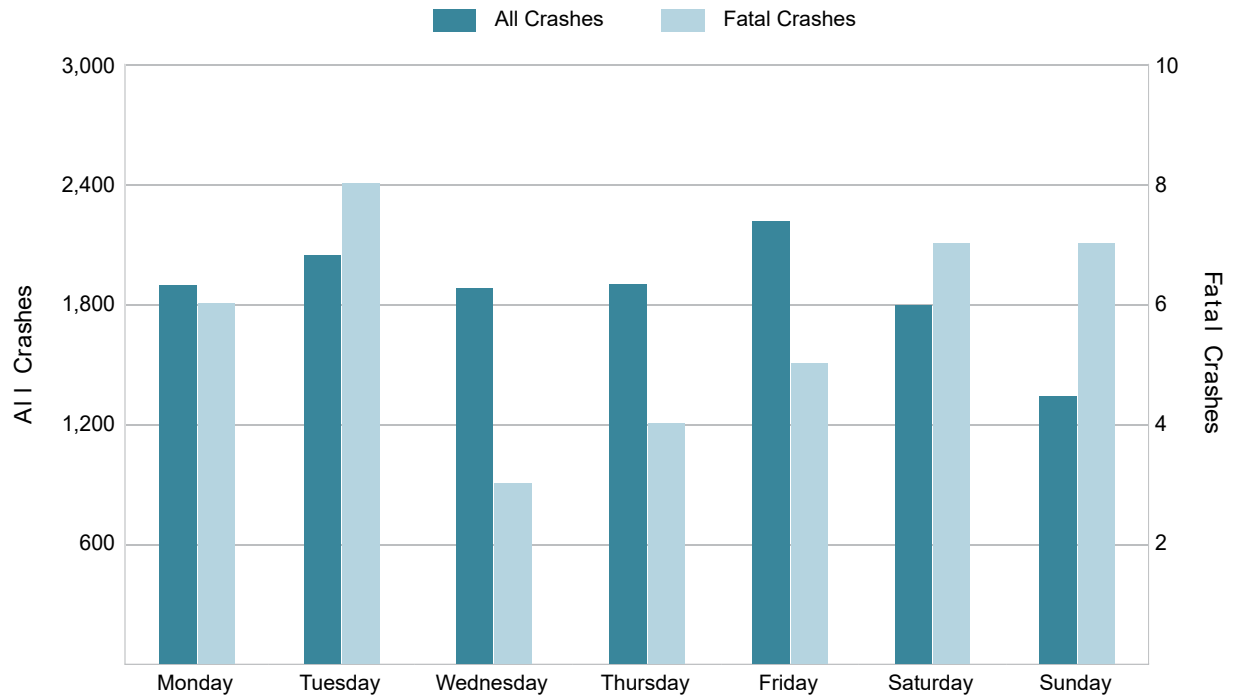
2021 Crashes by Month



2021 - Crashes by Day of Week

Day	All Crashes		Fatal Crashes		Injury Crashes			PDO Crashes
	Number	% of Total	Fatal	% of Fatal	A	B	C	Number
Monday	1,893	14.5	6	15.0	22	120	164	1,581
Tuesday	2,044	15.7	8	20.0	24	135	157	1,720
Wednesday	1,879	14.4	3	7.5	22	136	178	1,540
Thursday	1,899	14.5	4	10.0	22	116	162	1,595
Friday	2,210	16.9	5	12.5	35	143	194	1,833
Saturday	1,792	13.7	7	17.5	29	129	146	1,481
Sunday	1,336	10.2	7	17.5	28	102	113	1,086
Total	13,053	100.0	40	100.0	182	881	1,114	10,836

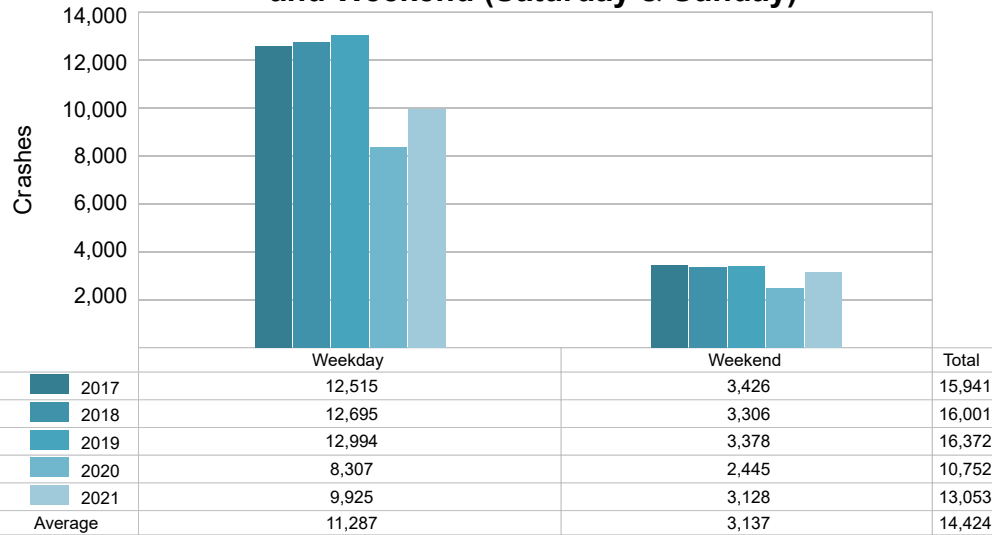
2021 Day of Week and Severity



5-Year Trend - Crashes by Weekday and Weekend

Portion of Week	2017		2018		2019		2020		2021	
	Total Crashes	Fatal Crashes	Total Crashes	Fatal Crashes	Total Crashes	Fatal Crashes	Total Crashes	Fatal Crashes	Total Crashes	Fatal Crashes
Weekday	12,515	39	12,695	24	12,994	24	8,307	27	9,925	26
Weekend	3,426	14	3,306	13	3,378	14	2,445	17	3,128	14
Total	15,941	53	16,001	37	16,372	38	10,752	44	13,053	40

5-Year Crash Trends by Weekday (Monday - Friday) and Weekend (Saturday & Sunday)

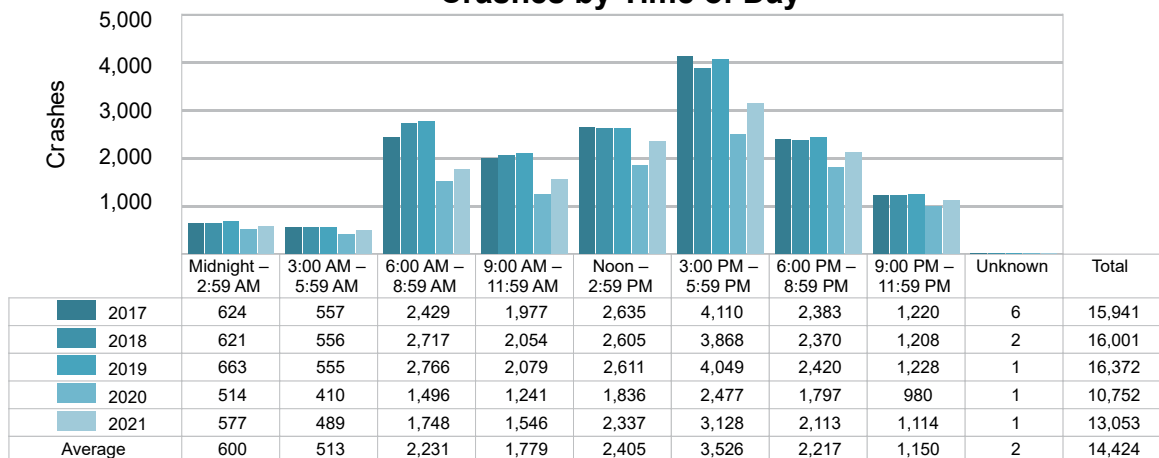


5-Year Trend - Crashes by Time of Day

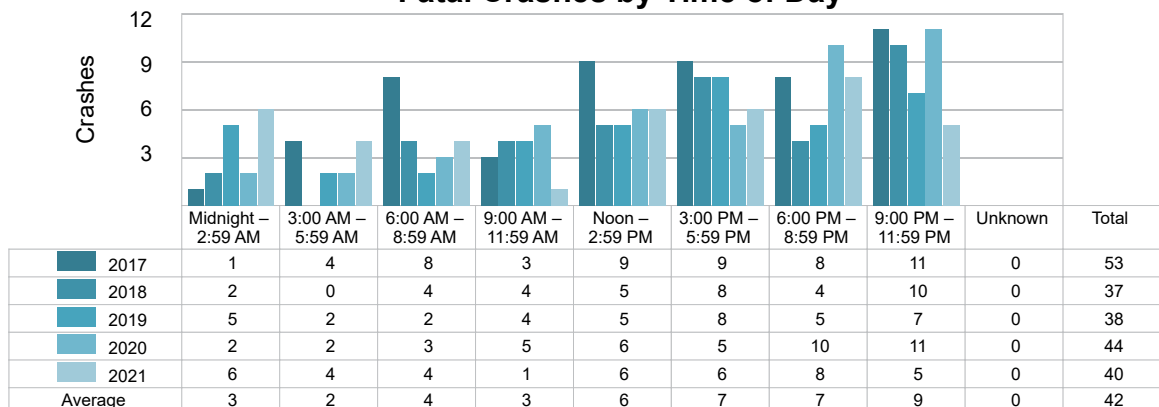
Time of Day	2017		2018		2019		2020		2021	
	Total Crashes	Fatal Crashes	Total Crashes	Fatal Crashes	Total Crashes	Fatal Crashes	Total Crashes	Fatal Crashes	Total Crashes	Fatal Crashes
Midnight – 2:59 AM	624	1	621	2	663	5	514	2	577	6
3:00 AM – 5:59 AM	557	4	556	0	555	2	410	2	489	4
6:00 AM – 8:59 AM	2,429	8	2,717	4	2,766	2	1,496	3	1,748	4
9:00 AM – 11:59 AM	1,977	3	2,054	4	2,079	4	1,241	5	1,546	1
Noon – 2:59 PM	2,635	9	2,605	5	2,611	5	1,836	6	2,337	6
3:00 PM – 5:59 PM	4,110 †	9	3,868 †	8	4,049 †	8	2,477 †	5	3,128 †	6
6:00 PM – 8:59 PM	2,383	8	2,370	4	2,420	5	1,797	10	2,113	8
9:00 PM – 11:59 PM	1,220	11	1,208	10	1,228	7	980	11	1,114	5
Unknown	6	0	2	0	1	0	1	0	1	0
Total	15,941	53	16,001	37	16,372	38	10,752	44	13,053	40

Note: † Indicates that the highest number of total crashes reported in the 5-year period occurred in the same time period.

5-Year Trend Crashes by Time of Day

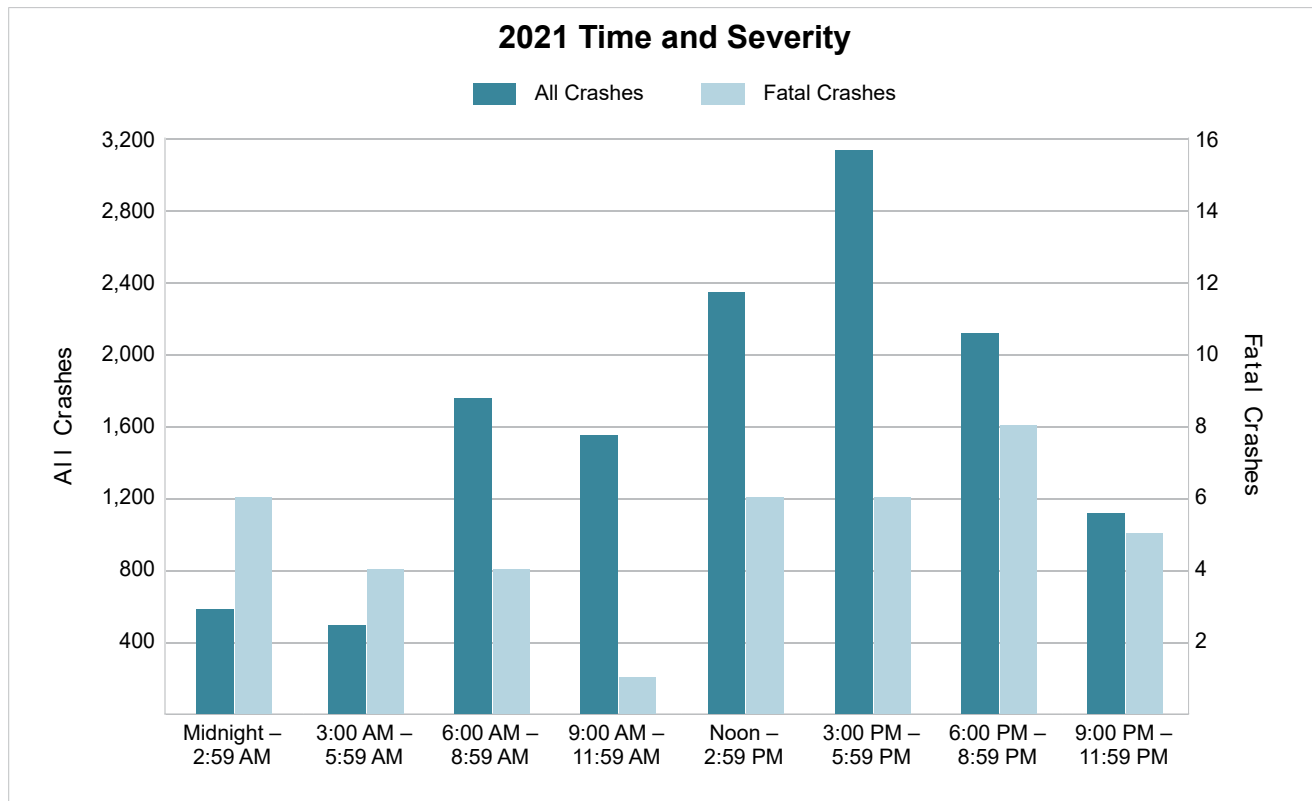


5-Year Trend Fatal Crashes by Time of Day



2021 - Time and Severity

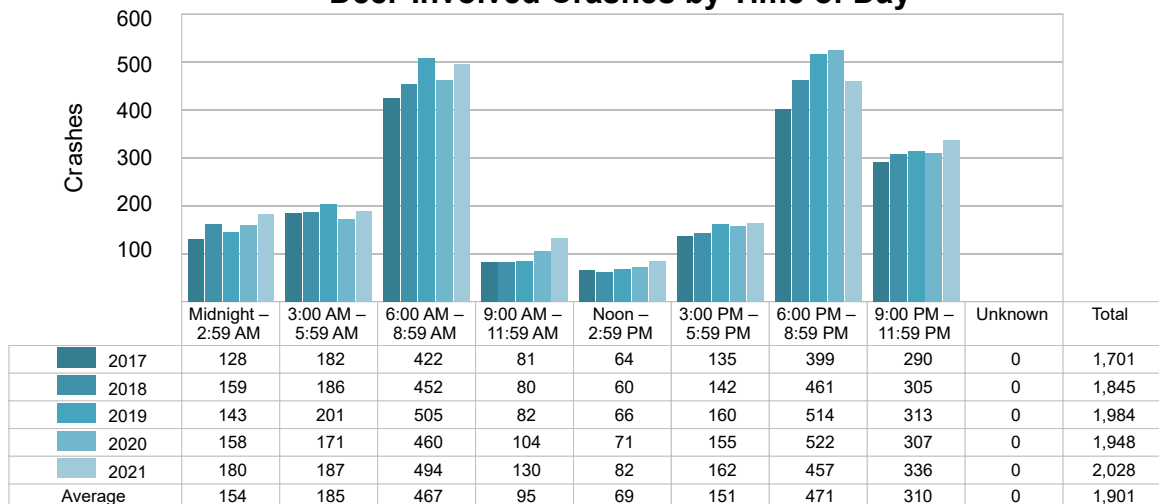
Time of Day	All Crashes		Fatal Crashes		Injury Crashes			PDO Crashes
	Number	% of Total	Number	% of Fatal	A	B	C	Number
Midnight – 2:59 AM	577	4.4	6	15.0	8	50	35	478
3:00 AM – 5:59 AM	489	3.7	4	10.0	2	22	32	429
6:00 AM – 8:59 AM	1,748	13.4	4	10.0	13	80	131	1,520
9:00 AM – 11:59 AM	1,546	11.8	1	2.5	18	100	150	1,277
Noon – 2:59 PM	2,337	17.9	6	15.0	35	163	205	1,928
3:00 PM – 5:59 PM	3,128	24.0	6	15.0	57	226	276	2,563
6:00 PM – 8:59 PM	2,113	16.2	8	20.0	25	168	190	1,722
9:00 PM – 11:59 PM	1,114	8.5	5	12.5	24	72	95	918
Unknown	1	0.0	0	0.0	0	0	0	1
Total	13,053	100.0	40	100.0	182	881	1,114	10,836



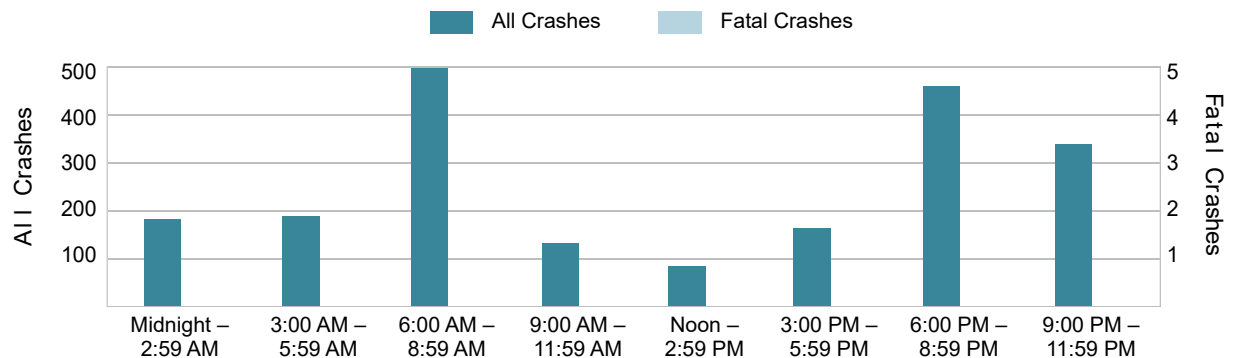
5-Year Trend - Deer-Involved Crashes by Time of Day

Time of Day	2017		2018		2019		2020		2021	
	Total Crashes	Fatal Crashes	Total Crashes	Fatal Crashes	Total Crashes	Fatal Crashes	Total Crashes	Fatal Crashes	Total Crashes	Fatal Crashes
Midnight – 2:59 AM	128	0	159	0	143	0	158	0	180	0
3:00 AM – 5:59 AM	182	1	186	0	201	0	171	0	187	0
6:00 AM – 8:59 AM	422	0	452	0	505	0	460	0	494	0
9:00 AM – 11:59 AM	81	0	80	0	82	0	104	0	130	0
Noon – 2:59 PM	64	0	60	0	66	0	71	0	82	0
3:00 PM – 5:59 PM	135	0	142	0	160	0	155	0	162	0
6:00 PM – 8:59 PM	399	0	461	0	514	0	522	0	457	0
9:00 PM – 11:59 PM	290	0	305	0	313	0	307	0	336	0
Unknown	0	0	0	0	0	0	0	0	0	0
Total	1,701	1	1,845	0	1,984	0	1,948	0	2,028	0

5-Year Trend
Deer-Involved Crashes by Time of Day



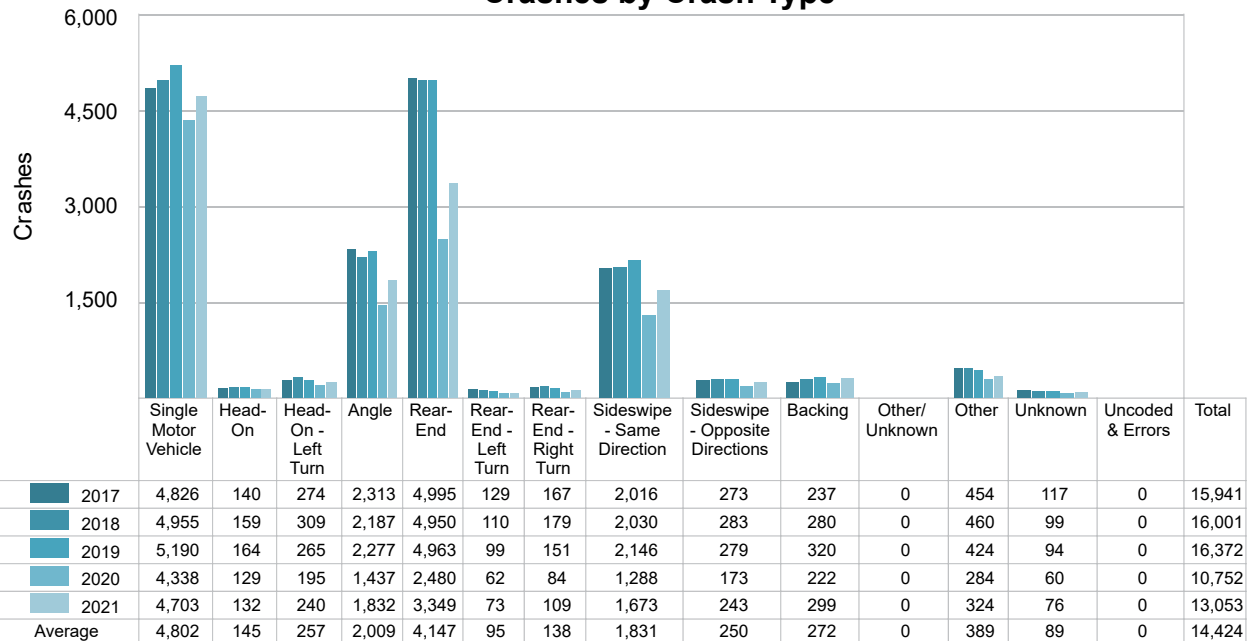
2021 Time and Severity of Deer-Involved Crashes



There were no fatal deer-involved crashes in MSP Post 12 - Brighton in 2021.

5-Year Trend - Crashes by Crash Type

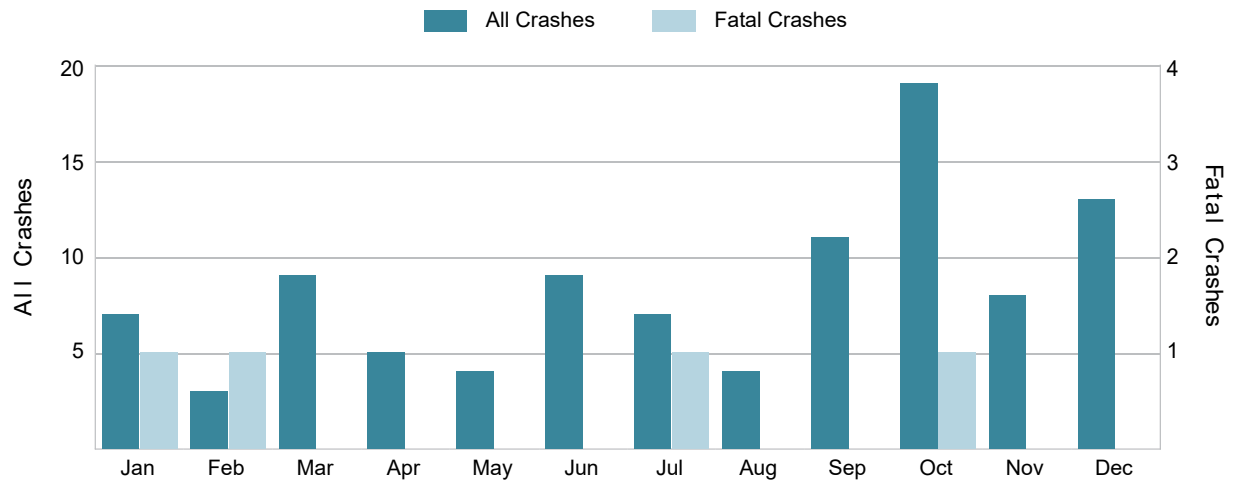
Crash Type	2017		2018		2019		2020		2021	
	Total Crashes	Fatal Crashes	Total Crashes	Fatal Crashes	Total Crashes	Fatal Crashes	Total Crashes	Fatal Crashes	Total Crashes	Fatal Crashes
Single Motor Vehicle	4,826	28	4,955	14	5,190	17	4,338	24	4,703	20
Head-On	140	6	159	8	164	8	129	6	132	5
Head-On - Left Turn	274	0	309	2	265	1	195	1	240	2
Angle	2,313	8	2,187	4	2,277	2	1,437	6	1,832	6
Rear-End	4,995	6	4,950	3	4,963	4	2,480	3	3,349	5
Rear-End - Left Turn	129	0	110	0	99	0	62	0	73	0
Rear-End - Right Turn	167	0	179	0	151	0	84	0	109	0
Sideswipe - Same Direction	2,016	5	2,030	1	2,146	2	1,288	2	1,673	1
Sideswipe - Opposite Directions	273	0	283	1	279	0	173	0	243	0
Backing	237	0	280	0	320	0	222	0	299	0
Other/Unknown	0	0	0	0	0	0	0	0	0	0
Other	454	0	460	4	424	4	284	2	324	1
Unknown	117	0	99	0	94	0	60	0	76	0
Uncoded & Errors	0	0	0	0	0	0	0	0	0	0
Total	15,941	53	16,001	37	16,372	38	10,752	44	13,053	40

5-Year Trend
Crashes by Crash Type

5-Year Trend - Pedestrian-Involved Crashes by Month

Month	2017		2018		2019		2020		2021	
	Total Crashes	Fatal Crashes	Total Crashes	Fatal Crashes	Total Crashes	Fatal Crashes	Total Crashes	Fatal Crashes	Total Crashes	Fatal Crashes
January	15	2	7	0	16	0	13	0	7	1
February	13	2	7	0	15	0	10	1	3	1
March	6	2	13	1	14	0	10	1	9	0
April	6	1	9	1	7	1	3	0	5	0
May	9	1	3	1	4	0	3	1	4	0
June	6	0	13	0	4	0	6	0	9	0
July	4	0	9	0	10	0	6	1	7	1
August	5	1	10	0	6	1	5	0	4	0
September	10	0	10	0	15	0	5	1	11	0
October	20	1	14	1	14	0	4	0	19	1
November	20	0	12	0	12	0	11	2	8	0
December	10	0	11	0	15	0	4	0	13	0
Total	124	10	118	4	132	2	80	7	99	4

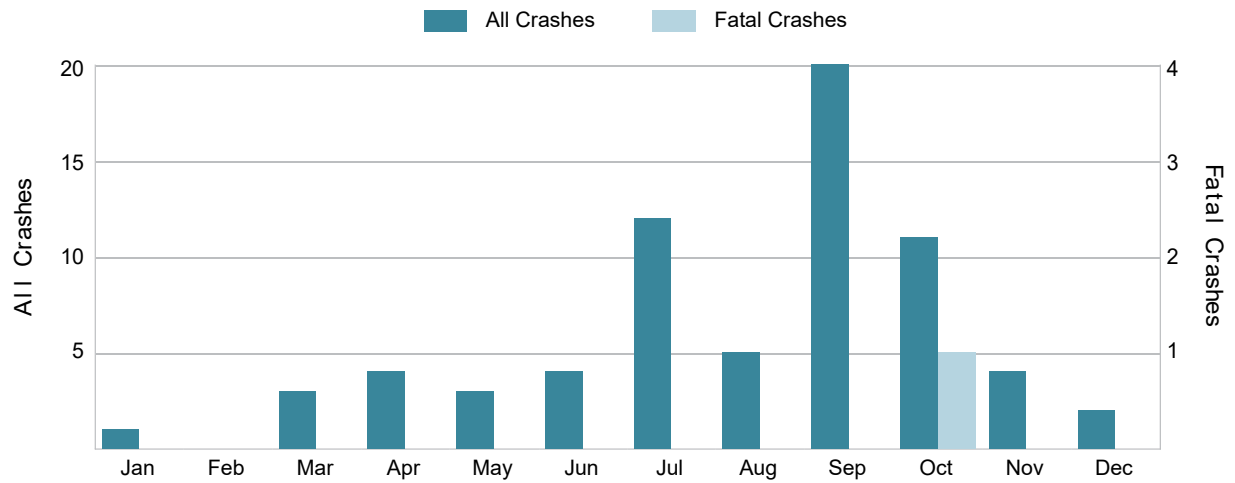
2021 Pedestrian-Involved Crashes by Month



5-Year Trend - Bicyclist-Involved Crashes by Month

Month	2017		2018		2019		2020		2021	
	Total Crashes	Fatal Crashes	Total Crashes	Fatal Crashes	Total Crashes	Fatal Crashes	Total Crashes	Fatal Crashes	Total Crashes	Fatal Crashes
January	6	1	3	0	5	0	2	0	1	0
February	8	0	2	0	0	0	2	0	0	0
March	4	0	5	0	1	0	2	1	3	0
April	6	0	8	1	8	1	2	0	4	0
May	10	0	7	0	7	0	1	0	3	0
June	9	0	10	1	15	0	8	0	4	0
July	11	0	9	0	11	0	11	0	12	0
August	8	0	7	0	8	0	13	1	5	0
September	16	0	16	0	23	0	7	0	20	0
October	16	0	6	0	13	0	6	0	11	1
November	10	0	5	0	2	0	5	0	4	0
December	3	0	1	0	3	0	5	0	2	0
Total	107	1	79	2	96	1	64	2	69	1

2021 Bicyclist-Involved Crashes by Month



2021 - Reported Motor Vehicle Crashes by County

County	Crashes												
	Total	Fatal	Injury	Property Damage	Inter-State	US Route	State Route	Local Street	Alcohol-Involved	Drug-Involved	Deer-Involved	Pedestrian-Involved	Bicyclist-Involved
Livingston	4,389	12	658	3,719	724	464	588	2,611	181	62	948	20	7
Washtenaw	8,664	28	1,519	7,117	1,177	1,358	821	5,266	291	129	1,080	79	62
Total	13,053	40	2,177	10,836	1,901	1,822	1,409	7,877	472	191	2,028	99	69

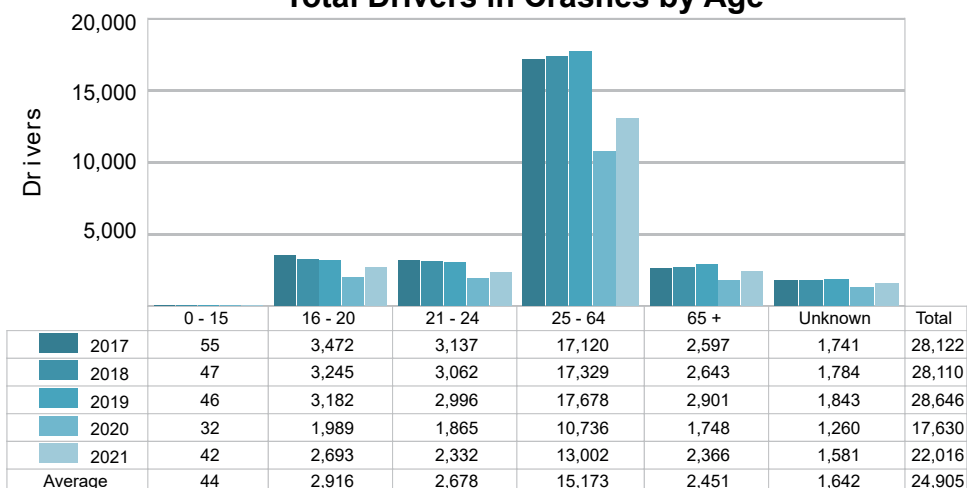
2021 - People in Reported Motor Vehicle Crashes by County

County	People					
	Fatalities	Suspected Serious Injuries	Suspected Minor Injuries	Possible Injuries	No Injuries	Uncoded & Errors
Livingston	12	133	528	851	6,800	190
Washtenaw	30	300	1,590	1,892	14,740	1,358
Total	42	433	2,118	2,743	21,540	1,548

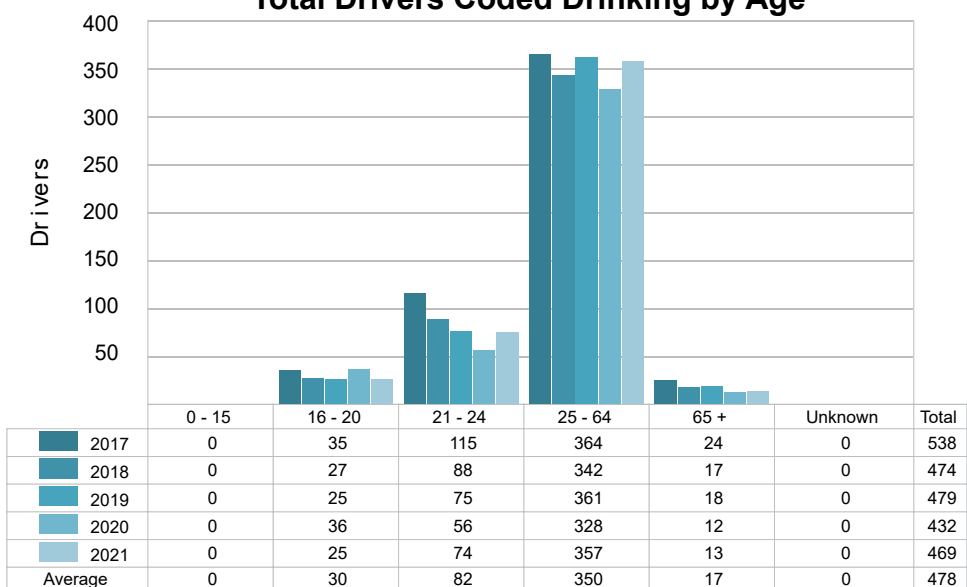
5-Year Trend - Drivers in Crashes Coded Drinking by Driver Age

Driver Age	2017		2018		2019		2020		2021	
	Total Drivers in Crashes	Total Drivers Coded Drinking	Total Drivers in Crashes	Total Drivers Coded Drinking	Total Drivers in Crashes	Total Drivers Coded Drinking	Total Drivers in Crashes	Total Drivers Coded Drinking	Total Drivers in Crashes	Total Drivers Coded Drinking
0 - 15	55	0	47	0	46	0	32	0	42	0
16 - 20	3,472	35	3,245	27	3,182	25	1,989	36	2,693	25
21 - 24	3,137	115	3,062	88	2,996	75	1,865	56	2,332	74
25 - 64	17,120	364	17,329	342	17,678	361	10,736	328	13,002	357
65 +	2,597	24	2,643	17	2,901	18	1,748	12	2,366	13
Unknown	1,741	0	1,784	0	1,843	0	1,260	0	1,581	0
Total	28,122	538	28,110	474	28,646	479	17,630	432	22,016	469

5-Year Trend Total Drivers in Crashes by Age



5-Year Trend Total Drivers Coded Drinking by Age



2021 - Bodily Alcohol Concentration (BAC) Results Among All Vehicle Drivers in Alcohol-Involved Crashes by Age

Age Group	Drivers				BAC Result Range for Drivers Coded Drinking				
	Total Drivers in Alcohol-Involved Crashes	Total Drivers Tested in all Crashes	Total Drivers Coded Drinking, Tested	Total Drivers Coded Drinking	BAC = 0.00	BAC 0.01 g/dL to 0.07 g/dL	BAC 0.08 g/dL to 0.16 g/dL	BAC 0.17 g/dL and Above	BAC Not Reported
0 - 15	0	0	0	0	0	0	0	0	0
16 - 20	38	33	20	25	0	5	7	1	12
21 - 24	104	78	66	74	1	15	13	10	35
25 - 64	483	378	304	357	2	22	65	77	191
65 +	23	18	13	13	0	2	2	1	8
Unknown	40	0	0	0	0	0	0	0	0
Total	688	507	403	469	3	44	87	89	246

Notes: BAC measured in grams (g) per deciliter (dL).

BAC may not be reported if drivers are not tested or if the results are not available immediately (as in the case of a blood test).

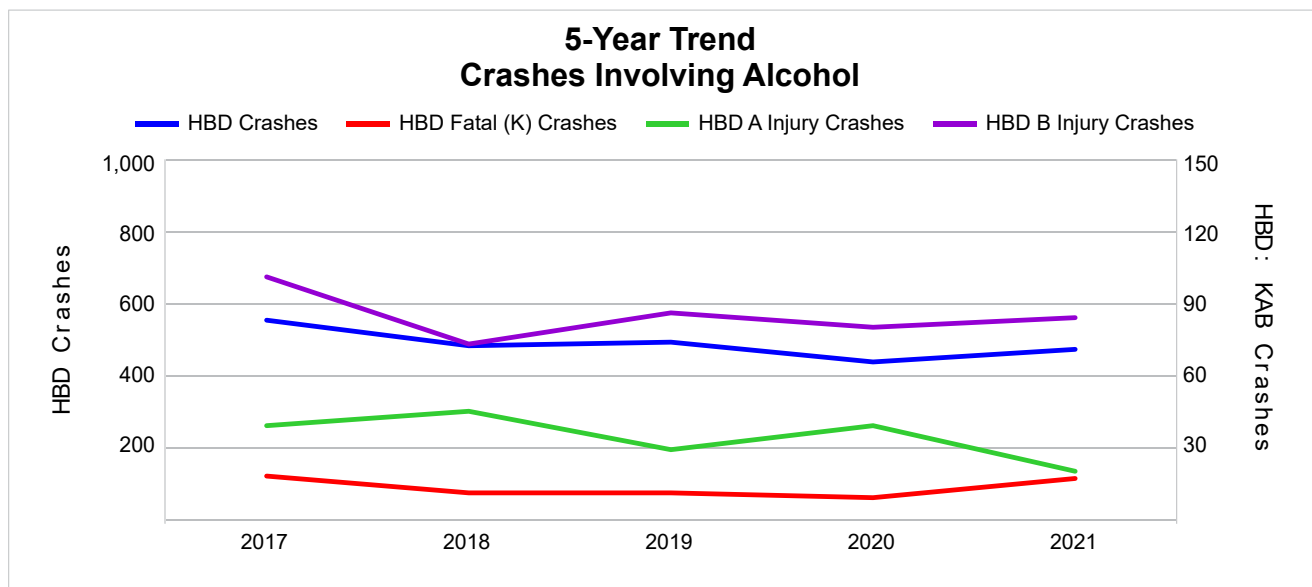
A driver may be coded by the officer as drinking even though no test is administered.

5-Year Trend - Crashes Involving Alcohol

Year	All Crashes	HBD Crashes	% HBD	Fatal Crashes	HBD Fatal Crashes	% HBD	A Injury Crashes	HBD A Injury Crashes	% HBD	B Injury Crashes	HBD B Injury Crashes	% HBD
2017	15,941	553	3.5	53	18	34.0	213	39	18.3	953	101	10.6
2018	16,001	482	3.0	37	11	29.7	219	45	20.5	885	73	8.2
2019	16,372	492	3.0	38	11	28.9	182	29	15.9	919	86	9.4
2020	10,752	437	4.1	44	9	20.5	185	39	21.1	664	80	12.0
2021	13,053	472	3.6	40	17	42.5 **	182	20 *	11.0 *	881	84	9.5

Note: * Indicates that the most recent year is the lowest number or percentage reported in the 5-year period in that column.

** Indicates that the most recent year is the highest number or percentage reported in the 5-year period in that column.



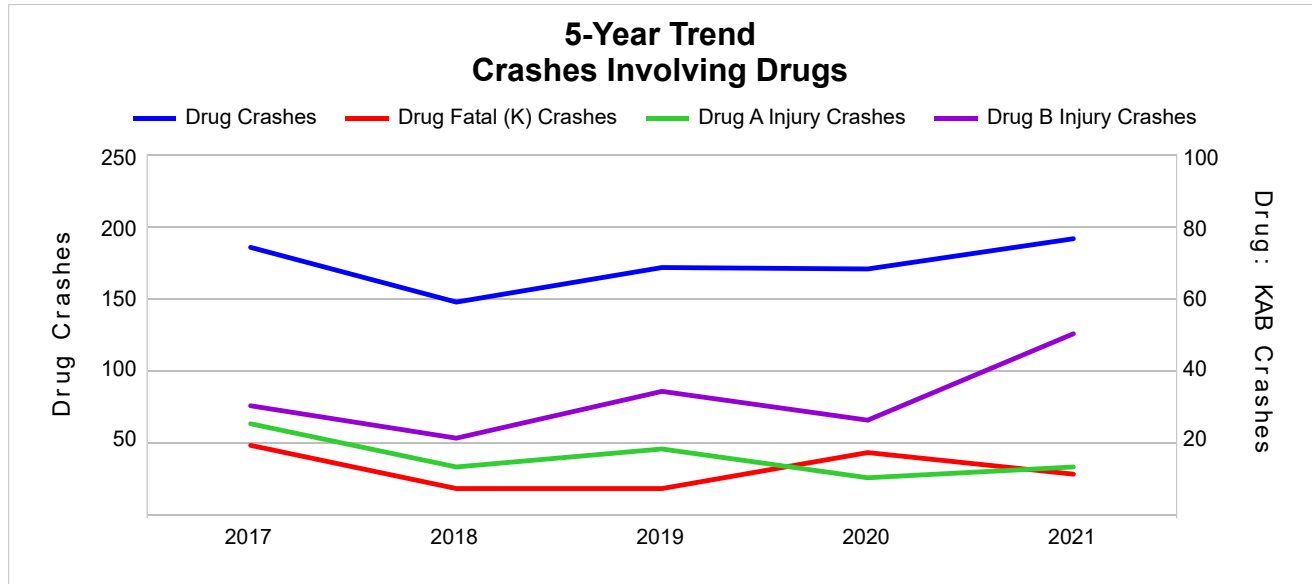
Note: Had-Been-Drinking (HBD)

5-Year Trend - Crashes Involving Drugs

Year	All Crashes	Drug Crashes	% Drug	Fatal Crashes	Drug Fatal Crashes	% Drug	A Injury Crashes	Drug A Injury Crashes	% Drug	B Injury Crashes	Drug B Injury Crashes	% Drug
2017	15,941	185	1.2	53	19	35.8	213	25	11.7	953	30	3.1
2018	16,001	147	0.9	37	7	18.9	219	13	5.9	885	21	2.4
2019	16,372	171	1.0	38	7	18.4	182	18	9.9	919	34	3.7
2020	10,752	170	1.6	44	17	38.6	185	10	5.4	664	26	3.9
2021	13,053	191 **	1.5	40	11	27.5	182	13	7.1	881	50 **	5.7 **

Note: * Indicates that the most recent year is the lowest number or percentage reported in the 5-year period in that column.

** Indicates that the most recent year is the highest number or percentage reported in the 5-year period in that column.

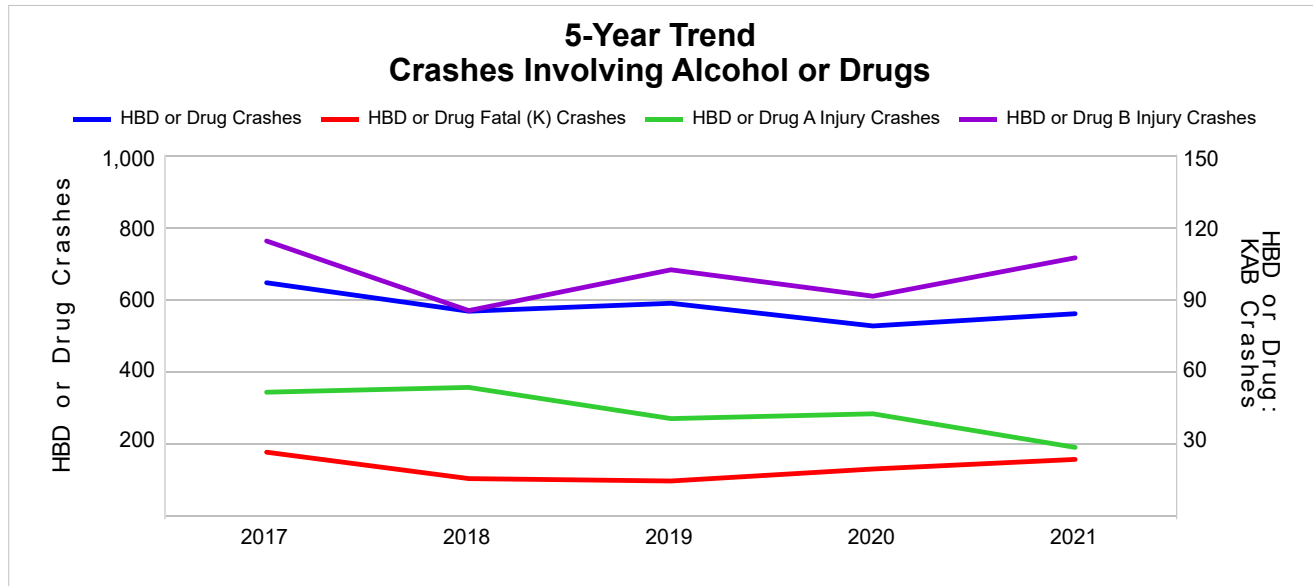


5-Year Trend - Crashes Involving Alcohol or Drugs

Year	All Crashes	HBD or Drug Crashes	% HBD or Drug	Fatal Crashes	HBD or Drug Fatal Crashes	% HBD or Drug	A Injury Crashes	HBD or Drug A Injury Crashes	% HBD or Drug	B Injury Crashes	HBD or Drug B Injury Crashes	% HBD or Drug
2017	15,941	644	4.0	53	26	49.1	213	51	23.9	953	114	12.0
2018	16,001	565	3.5	37	15	40.5	219	53	24.2	885	85	9.6
2019	16,372	587	3.6	38	14	36.8	182	40	22.0	919	102	11.1
2020	10,752	524	4.9	44	19	43.2	185	42	22.7	664	91	13.7
2021	13,053	558	4.3	40	23	57.5 **	182	28 *	15.4 *	881	107	12.1

Note: * Indicates that the most recent year is the lowest number or percentage reported in the 5-year period in that column.

** Indicates that the most recent year is the highest number or percentage reported in the 5-year period in that column.



Note: Had-Been-Drinking (HBD)

2021 - Restraints Worn Among Vehicle Drivers and Injured Passengers by Vehicle Type

Vehicle Type	Total Occupants			Fatalities			A - Suspected Serious			B - Suspected Minor			C - Possible Injury			No Injury		
	Total	Used Restraint	%	Total	Used Restraint	%	Total	Used Restraint	%	Total	Used Restraint	%	Total	Used Restraint	%	Total	Used Restraint	%
Passenger Car, SUV, Van	18,722	17,175	91.7	18	13	72.2	137	110	80.3	877	813	92.7	1,386	1,307	94.3	15,278	14,932	97.7
Motor Home	146	129	88.4	0	0	0.0	2	2	100.0	4	4	100.0	14	13	92.9	120	110	91.7
Pickup Truck	2,284	2,045	89.5	9	3	33.3	15	13	86.7	68	57	83.8	117	112	95.7	1,940	1,860	95.9
Small Truck Under 10,000 lbs. GVWR	134	119	88.8	0	0	0.0	0	0	0.0	3	2	66.7	2	1	50.0	119	116	97.5
Motorcycle	150	104	69.3	7	5	71.4	31	17	54.8	50	40	80.0	23	21	91.3	34	21	61.8
Moped/Goped	12	3	25.0	0	0	0.0	0	0	0.0	5	1	20.0	6	2	33.3	1	0	0.0
Go-Cart/Golf Cart	5	0	0.0	0	0	0.0	0	0	0.0	4	0	0.0	1	0	0.0	0	0	0.0
Snowmobile	1	0	0.0	0	0	0.0	1	0	0.0	0	0	0.0	0	0	0.0	0	0	0.0
Off-Road Vehicle (ORV)/All-Terrain Vehicle (ATV)	8	0	0.0	0	0	0.0	1	0	0.0	4	0	0.0	1	0	0.0	2	0	0.0
Other (non-registered farm equipment, construction equipment, snow plows, etc.)	57	46	80.7	1	0	0.0	0	0	0.0	0	0	0.0	5	4	80.0	45	42	93.3
Truck/Bus (over 10,000 lbs. GVWR/8+ occupants/hazmat placard)	800	729	91.1	2	0	0.0	1	0	0.0	13	12	92.3	26	21	80.8	722	696	96.4
Uncoded & Errors	312	0	0.0	0	0	0.0	0	0	0.0	0	0	0.0	0	0	0.0	3	0	0.0
Total	22,631	20,350	89.9	37	21	56.8	188	142	75.5	1,028	929	90.4	1,581	1,481	93.7	18,264	17,777	97.3

Note: Restraint Use includes shoulder belt only used, lap belt only used, both lap and shoulder belts used, child restraint used, restraint failure, and helmet worn.

2021 - Restraints Worn Among Vehicle Drivers and Injured Passengers by Age

Age Group	Total Occupants			Fatalities			A - Suspected Serious			B - Suspected Minor			C - Possible Injury			No Injury		
	Total	Used Restraint	%	Total	Used Restraint	%	Total	Used Restraint	%	Total	Used Restraint	%	Total	Used Restraint	%	Total	Used Restraint	%
0 - 15	202	170	84.2	1	0	0.0	6	3	50.0	37	29	78.4	118	104	88.1	40	34	85.0
16 - 20	2,787	2,711	97.3	7	4	57.1	21	16	76.2	137	126	92.0	185	168	90.8	2,435	2,397	98.4
21 - 24	2,379	2,310	97.1	0	0	0.0	16	12	75.0	131	120	91.6	159	147	92.5	2,070	2,031	98.1
25 - 64	13,244	12,778	96.5	23	12	52.2	115	83	72.2	569	509	89.5	934	879	94.1	11,559	11,295	97.7
65 +	2,438	2,380	97.6	6	5	83.3	30	28	93.3	152	144	94.7	185	183	98.9	2,061	2,020	98.0
Unknown	1,581	1	0.1	0	0	0.0	0	0	0.0	2	1	50.0	0	0	0.0	99	0	0.0
Total	22,631	20,350	89.9	37	21	56.8	188	142	75.5	1,028	929	90.4	1,581	1,481	93.7	18,264	17,777	97.3

Note: Restraint Use includes shoulder belt only used, lap belt only used, both lap and shoulder belts used, child restraint used, restraint failure, and helmet worn.

5-Year Trend - Restraint Use Among Drivers

Restraint Use	2017			2018			2019			2020			2021		
	Drivers	Fatal Drivers	Injured Drivers	Drivers	Fatal Drivers	Injured Drivers	Drivers	Fatal Drivers	Injured Drivers	Drivers	Fatal Drivers	Injured Drivers	Drivers	Fatal Drivers	Injured Drivers
No Belts Available	21	0	1	29	0	5	21	0	4	26	0	7	21	1	5
Shoulder Belt Only Used	27	0	3	26	0	5	29	0	4	18	0	2	31	0	2
Lap Belt Only Used	15	0	3	19	0	4	18	0	1	16	0	4	15	0	1
Both Lap & Shoulder Belt Used	25,516	24	2,401	25,496	13	2,415	25,922	14	2,248	15,711	15	1,524	19,676	12	1,951
No Belts Used	116	7	55	107	7	48	134	6	61	114	11	58	106	9	56
Child Restraint Used - Forward Facing	0	0	0	0	0	0	0	0	0	0	0	0	0	0	0
Child Restraint Not Used, Unavailable or Improper Use	0	0	0	0	0	0	0	0	0	0	0	0	0	0	0
Child Restraint Used - Rear Facing	0	0	0	0	0	0	0	0	0	0	0	0	0	0	0
Child Restraint Used - Booster Seat	6	0	0	0	0	0	0	0	0	0	0	0	0	0	0
Restraint Failure	1	0	1	1	0	0	2	0	1	0	0	0	0	0	0
Restraint Use Unknown	1,740	2	78	1,721	2	74	1,762	2	58	1,204	2	51	1,586	2	62
Helmet Worn	115	2	92	101	5	77	102	4	76	98	3	78	100	5	74
Helmet Not Worn	41	3	28	39	2	30	57	3	41	47	4	38	49	2	35
Helmet Use Unknown	5	0	3	5	0	4	4	0	3	4	0	2	5	0	2
Uncoded & Errors	519	0	0	566	0	0	595	0	0	392	0	0	427	0	0
Total	28,122	38	2,665	28,110	29	2,662	28,646	29	2,497	17,630	35	1,764	22,016	31	2,188

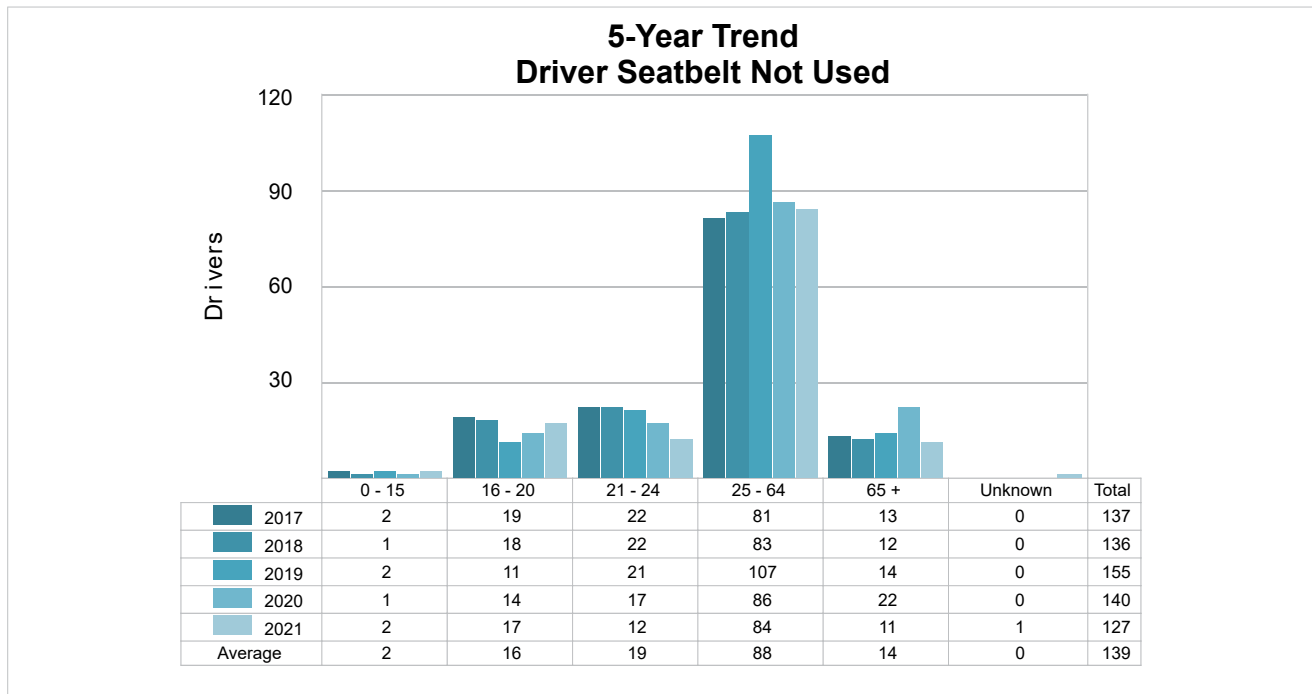
5-Year Trend - Restraint Use Among Drivers Coded Drinking

Restraint Use	2017			2018			2019			2020			2021		
	Drivers	Fatal Drivers	Injured Drivers	Drivers	Fatal Drivers	Injured Drivers	Drivers	Fatal Drivers	Injured Drivers	Drivers	Fatal Drivers	Injured Drivers	Drivers	Fatal Drivers	Injured Drivers
No Belts Available	0	0	0	2	0	0	1	0	1	0	0	0	1	1	0
Shoulder Belt Only Used	1	0	0	2	0	1	0	0	0	0	0	0	1	0	0
Lap Belt Only Used	0	0	0	0	0	0	0	0	0	1	0	1	0	0	0
Both Lap & Shoulder Belt Used	416	3	138	367	4	118	386	2	100	338	4	119	363	3	121
No Belts Used	30	3	18	28	2	14	33	2	20	17	1	16	20	4	11
Child Restraint Used - Forward Facing	0	0	0	0	0	0	0	0	0	0	0	0	0	0	0
Child Restraint Not Used, Unavailable or Improper Use	0	0	0	0	0	0	0	0	0	0	0	0	0	0	0
Child Restraint Used - Rear Facing	0	0	0	0	0	0	0	0	0	0	0	0	0	0	0
Child Restraint Used - Booster Seat	1	0	0	0	0	0	0	0	0	0	0	0	0	0	0
Restraint Failure	0	0	0	0	0	0	0	0	0	0	0	0	0	0	0
Restraint Use Unknown	83	1	28	63	0	22	48	0	24	64	1	20	73	1	19
Helmet Worn	3	0	3	6	0	6	3	1	2	5	0	5	5	2	2
Helmet Not Worn	4	0	4	5	2	3	8	2	6	6	0	6	6	0	6
Helmet Use Unknown	0	0	0	1	0	0	0	0	0	1	0	1	0	0	0
Uncoded & Errors	0	0	0	0	0	0	0	0	0	0	0	0	0	0	0
Total	538	7	191	474	8	164	479	7	153	432	6	168	469	11	159

5-Year Trend - Seatbelt Not Used Among Drivers by Age

Age Group	2017			2018			2019			2020			2021		
	Drivers	Fatal Drivers	Injured Drivers	Drivers	Fatal Drivers	Injured Drivers	Drivers	Fatal Drivers	Injured Drivers	Drivers	Fatal Drivers	Injured Drivers	Drivers	Fatal Drivers	Injured Drivers
0 - 15	2	0	0	1	0	0	2	0	0	1	0	0	2	0	1
16 - 20	19	0	12	18	0	8	11	0	8	14	0	11	17	2	10
21 - 24	22	2	13	22	3	6	21	0	12	17	0	9	12	0	7
25 - 64	81	3	28	83	3	36	107	5	43	86	8	36	84	7	38
65 +	13	2	3	12	1	3	14	1	2	22	3	9	11	1	5
Unknown	0	0	0	0	0	0	0	0	0	0	0	0	1	0	0
Total	137	7	56	136	7	53	155	6	65	140	11	65	127	10	61

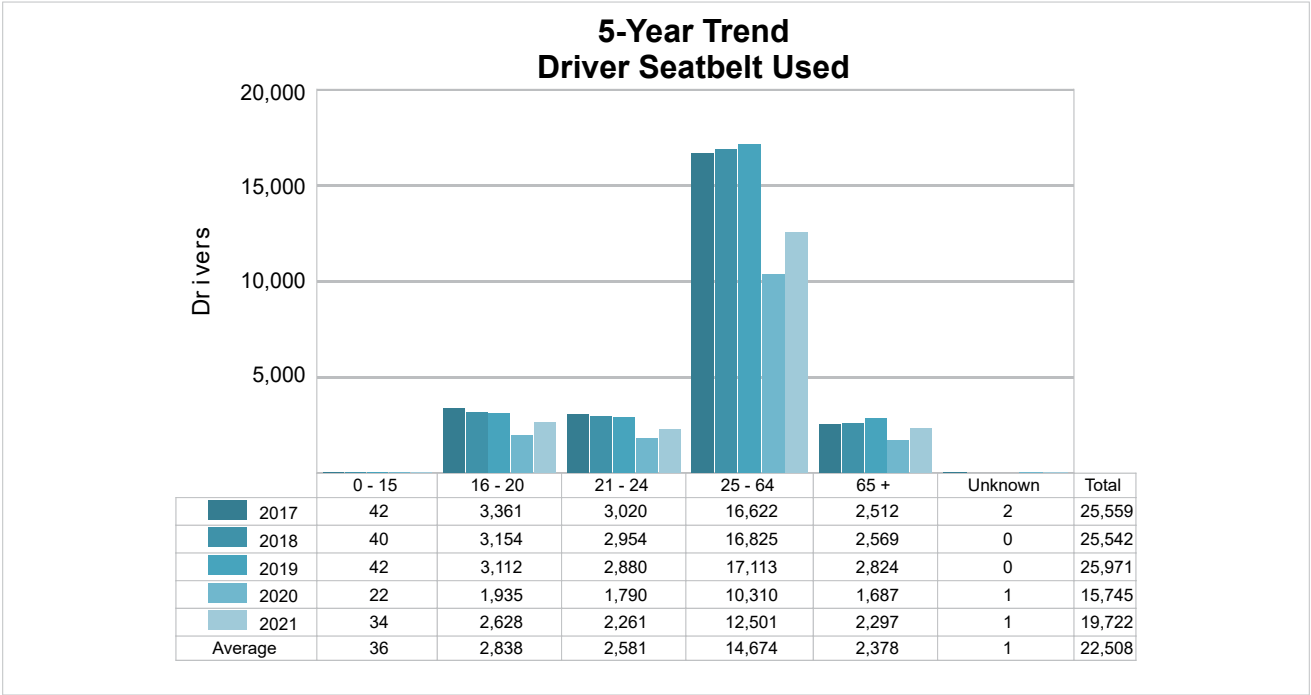
Note: Seatbelt Not Used includes no belts available or no belts used.



5-Year Trend - Seatbelt Used Among Drivers by Age

Age Group	2017			2018			2019			2020			2021		
	Drivers	Fatal Drivers	Injured Drivers	Drivers	Fatal Drivers	Injured Drivers	Drivers	Fatal Drivers	Injured Drivers	Drivers	Fatal Drivers	Injured Drivers	Drivers	Fatal Drivers	Injured Drivers
0 - 15	42	0	3	40	0	2	42	0	1	22	0	1	34	0	0
16 - 20	3,361	2	304	3,154	1	302	3,112	0	253	1,935	0	169	2,628	3	230
21 - 24	3,020	1	296	2,954	1	270	2,880	1	242	1,790	0	154	2,261	0	233
25 - 64	16,622	15	1,538	16,825	9	1,552	17,113	7	1,448	10,310	8	993	12,501	6	1,213
65 +	2,512	6	267	2,569	2	298	2,824	6	310	1,687	7	213	2,297	3	277
Unknown	2	0	0	0	0	0	0	0	0	1	0	0	1	0	1
Total	25,559	24	2,408	25,542	13	2,424	25,971	14	2,254	15,745	15	1,530	19,722	12	1,954

Note: Seatbelt Used includes shoulder belt only used, lap belt only used, both lap and shoulder belts used, and restraint failure.



5-Year Trend - Drivers in Crashes by Hazardous Action

Hazardous Action	2017		2018		2019		2020		2021	
	Total Drivers in Crashes	Drivers in Fatal Crashes	Total Drivers in Crashes	Drivers in Fatal Crashes	Total Drivers in Crashes	Drivers in Fatal Crashes	Total Drivers in Crashes	Drivers in Fatal Crashes	Total Drivers in Crashes	Drivers in Fatal Crashes
None	13,672	43	13,761	32	13,972	21	8,776	31	10,949	28
Speed Too Fast	1,852	5	2,092	8	2,121	8	1,344	10	1,433	5
Speed Too Slow	9	0	10	0	16	0	7	0	5	0
Failed to Yield	2,686	6	2,687	3	2,677	3	1,598	6	2,131	4
Disregard Traffic Control	336	1	313	1	317	0	263	1	317	1
Drove Wrong Way	10	0	14	2	13	0	8	0	7	0
Drove Left of Center	125	4	132	7	123	2	90	2	115	0
Improper Passing	142	2	134	0	154	1	88	0	109	0
Improper Lane Use	660	2	684	0	798	1	514	1	736	1
Improper Turn	226	1	244	0	301	0	186	0	199	1
Improper/No Signal	58	0	60	0	33	0	27	0	44	0
Improper Backing	291	0	282	0	297	0	215	0	266	0
Unable to Stop in Assured Clear Distance	4,714	4	4,616	1	4,648	1	2,256	2	3,040	3
Other	699	5	679	7	703	9	501	2	580	6
Unknown	1,173	3	1,098	5	1,159	7	811	10	1,061	7
Reckless Driving	133	7	101	4	134	2	99	2	113	3
Careless/Negligent Driving	828	5	673	4	618	7	487	7	515	9
Uncoded & Errors	508	0	530	3	562	8	360	0	396	0
Total	28,122	88	28,110	77	28,646	70	17,630	74	22,016	68

Office of Highway Safety Planning

Physical Address:
7150 Harris Drive
Dimondale, Michigan 48821

Mailing Address:
P.O. Box 30634
Lansing, Michigan 48909

Find us on the web:
MichiganTrafficCrashFacts.org
mtcf-info@umich.edu

