



2021

# Michigan Traffic Crash Facts

**MTCF**  
Michigan Traffic  
Crash Facts

## Reporting Criteria

Please pay particular attention to the wording when interpreting the three levels of data gathered for this report.

### Crash

The Crash Level analyzes data related to crash events and returns one result per crash.

Examples: Time, weather, and location.

### Units

The Units Level analyzes the experience of the units in the crash and returns one result per vehicle, driver, pedestrian, bicyclist, or train.

Examples: Vehicle type, driver condition, and unit events.

### People

The People Level analyzes the experience of the people involved in the crash and returns one result per occupant/person/party.

Examples: Age, injury severity, and seat belt or helmet use.

### **KABCO Injury Indicator:**

K = Killed

A = Suspected Serious Injury

B = Suspected Minor Injury

C = Possible Injury

O = No Injury

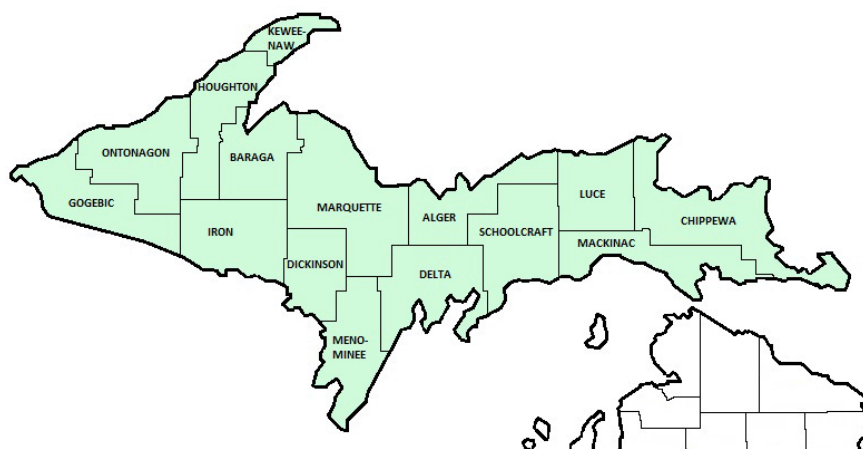
Property Damage Only (PDO)



## Michigan State Police (MSP) District 8 - Upper Peninsula

### 2021 Traffic Crash Data & 2017-2021 5-Year Trends

Beginning in 2011, District 8 is comprised of Alger, Baraga, Chippewa, Delta, Dickinson, Gogebic, Houghton, Iron, Keweenaw, Luce, Mackinac, Marquette, Menominee, Ontonagon and Schoolcraft counties. Trend tables for this report are based on those counties.



### Sources:

The crashes in this report occurred on public roadways in Michigan and resulted in injuries, fatalities, or property damage (with \$1,000 as a reporting threshold). The information was gathered from Michigan Traffic Crash Report Forms (UD-10) submitted by local police departments, sheriff's offices, and the Michigan State Police. Other related information was obtained from the departments of Transportation, State, and Community Health.

## MSP District 8 - Upper Peninsula

- There were 7,990 crashes in District 8 during 2021. [Page 1]
- A total of 44 fatalities resulted from 41 fatal crashes in 2021 in District 8. [Page 1]
- There were 1,442 injuries and 1,065 injury crashes. [Page 1]
- There were 6,884 property damage only crashes (no fatalities or injuries). [Page 1]
- November had the highest number of crashes (1,000). [Pages 1-2]
- June had the highest number of fatal crashes (8) and fatalities (9). [Pages 1-2]
- September had the highest number of injury crashes (115) while July had the highest number of injuries (152). [Page 1]
- November had the highest number of property damage only crashes (901). [Page 1]
- Of all vehicles involved in fatal crashes, 4 (5.6%) were motorcycles. [Page 1]
- Friday was the day of the week with the highest number of crashes (1,247) and Thursday had the highest number of fatal crashes (11). [Pages 2-3]
- The 3:00 PM – 5:59 PM time period had the highest number of crashes (1,557). This holds true for every year between 2017 and 2021. The 3:00 PM – 5:59 PM time period had the highest number of fatal crashes (9). [Pages 5-6]
- During the period from 2017 to 2021, the highest number of deer crashes occurred in 2017 (3,973). The 6:00 PM – 8:59 PM time period consistently had the highest number of deer-involved crashes during the five-year period. There were 2 fatal crashes involving deer in 2021. [Page 7]
- Marquette County (19.3%) had the highest number of crashes in District 8 in 2021, followed by Delta County (13.5%), and Houghton County (11.1%). [Page 11]
- Dickinson, Houghton, and Marquette County (15.9%) had the highest number of fatalities in District 8 in 2021, followed by Houghton and Marquette County (15.9%), and Marquette County (15.9%). [Page 11]
- The highest number of drivers in crashes (13,050) occurred during 2017 and the highest number of drivers coded drinking in crashes (357) occurred during 2017 within the five year period between 2017 and 2021. [Page 12]
- A total of 325 crashes involved alcohol in 2021. [Page 13]
- Alcohol-involved fatal crashes were the highest in 2019 during the five-year period from 2017 to 2021 at 15. [Page 13]
- A total of 140 crashes, 13 fatal crashes, and 13 suspected injury crashes involved drugs in 2021. [Page 14]
- There were 9,391 drivers wearing seatbelts and 133 drivers not wearing seatbelts in crashes in 2021. Of the 133 drivers not wearing seatbelts, 12 (9.0%) were killed and 50 (37.6%) were injured. [Pages 17-19]
- The most common hazardous action coded for drivers in 2021 in all crashes was speed too fast (832), while the most common hazardous action coded for drivers in fatal crashes was unknown (10). [Page 20]

## 2021 - Crashes and Injury by Month

Month	Crashes				People	
	Total	Fatal	Injury	Property Damage Only (PDO)	Fatalities	Injuries
January	620	2	59	559	2	76
February	612	3	90	519	3	119
March	509	1	64	444	1	85
April	463	1	61	401	1	75
May	548	3	78	467	3	107
June	668	8	109	551	9	145
July	604	5	104	495	5	152
August	587	6	99	482	6	150
September	678	2	115	561	2	151
October	721	3	87	631	3	121
November	1,000	3	96	901	4	129
December	980	4	103	873	5	132
<b>Total</b>	<b>7,990</b>	<b>41</b>	<b>1,065</b>	<b>6,884</b>	<b>44</b>	<b>1,442</b>

## 2021 - Driver Statistics

Age Group	MSP District 8 - Upper Peninsula			Driver Rates	
	2019 Population*	Licensed Drivers	Drivers in Crashes	Per 10k Population	Per 10k Licensed
0 - 15	47,429	1,243	36	7.6	289.6
16 - 20	20,635	11,949	1,270	615.5	1,062.9
21 - 24	18,719	11,106	943	503.8	849.1
25 - 64	143,813	128,199	6,408	445.6	499.8
65 +	68,255	67,226	1,766	258.7	262.7
Unknown	0	0	602	--	--
<b>Total</b>	<b>298,851</b>	<b>219,723</b>	<b>11,025</b>	<b>368.9</b>	<b>501.8</b>

\*2021 Population of Michigan Counties (by single-year of age) not yet available from U.S. Census Bureau.

## 2021 - Vehicles in Crashes

Vehicle Type	Motor Vehicles		Fatal Crashes		Injury Crashes	PDO Crashes
	Number of Vehicles	% of Total	Number	% of Total	Number	Number
Passenger Car, SUV, Van	7,590	68.8	43	59.7	1,071	6,476
Motor Home	16	0.1	0	0.0	1	15
Pickup Truck	2,589	23.5	17	23.6	361	2,211
Small Truck Under 10,000 lbs. GVWR	69	0.6	0	0.0	9	60
Motorcycle	110	1.0	4	5.6	88	18
Moped/Goped	17	0.2	0	0.0	12	5
Go-Cart/Golf Cart	0	0.0	0	0.0	0	0
Snowmobile	42	0.4	1	1.4	33	8
Off-Road Vehicle (ORV)/All-Terrain Vehicle (ATV)	73	0.7	4	5.6	53	16
Other (non-registered farm equipment, construction equipment, snow plows, etc.)	38	0.3	0	0.0	7	31
Truck/Bus (over 10,000 lbs. GVWR/8+ occupants/hazmat placard)	310	2.8	3	4.2	44	263
Uncoded & Errors	171	1.6	0	0.0	5	166
<b>Total</b>	<b>11,025</b>	<b>100.0</b>	<b>72</b>	<b>100.0</b>	<b>1,684</b>	<b>9,269</b>

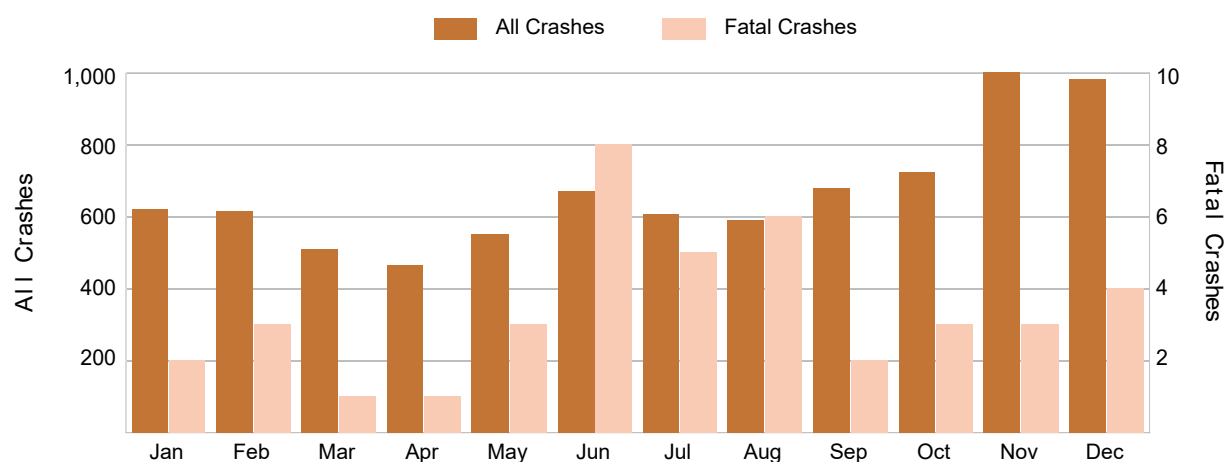
## 5-Year Trend - Crashes by Month

Month	2017		2018		2019		2020		2021	
	Total Crashes	Fatal Crashes	Total Crashes	Fatal Crashes	Total Crashes	Fatal Crashes	Total Crashes	Fatal Crashes	Total Crashes	Fatal Crashes
January	861	2	976	2	926	6	877	3	620	2
February	783	3	675	2	977	2	758	3	612	3
March	676	3	613	4	632	3	558	0	509	1
April	516	4	596	1	572	1	285	3	463	1
May	494	3	519	2	550	4	417	0	548	3
June	706	5	686	2	692	4	565	3	668	8
July	676	3	686	4	698	4	582	5	604	5
August	637	1	588	3	625	2	582	5	587	6
September	794	2	684	5	577	6	628	1	678	2
October	1,015	1	864	1	872	4	772	3	721	3
November	1,119	2	1,145	3	1,080	1	720	4	1,000	3
December	1,265	6	916	4	939	0	634	2	980	4
<b>Total</b>	<b>9,542</b>	<b>35</b>	<b>8,948</b>	<b>33</b>	<b>9,140</b>	<b>37</b>	<b>7,378</b>	<b>32</b>	<b>7,990</b>	<b>41</b>

## 5-Year Trend - Crashes by Day of Week

Day	2017		2018		2019		2020		2021	
	Total Crashes	Fatal Crashes	Total Crashes	Fatal Crashes	Total Crashes	Fatal Crashes	Total Crashes	Fatal Crashes	Total Crashes	Fatal Crashes
Monday	1,225	4	1,323	4	1,306	5	1,108	1	1,184	0
Tuesday	1,367	4	1,159	4	1,244	4	950	3	1,088	7
Wednesday	1,411	6	1,324	5	1,452	4	1,045	4	1,136	4
Thursday	1,407	4	1,337	5	1,395	8	1,197	6	1,178	11
Friday	1,638	11	1,546	3	1,442	7	1,195	7	1,247	5
Saturday	1,343	3	1,173	7	1,240	7	963	7	1,142	10
Sunday	1,151	3	1,086	5	1,061	2	920	4	1,015	4
<b>Total</b>	<b>9,542</b>	<b>35</b>	<b>8,948</b>	<b>33</b>	<b>9,140</b>	<b>37</b>	<b>7,378</b>	<b>32</b>	<b>7,990</b>	<b>41</b>

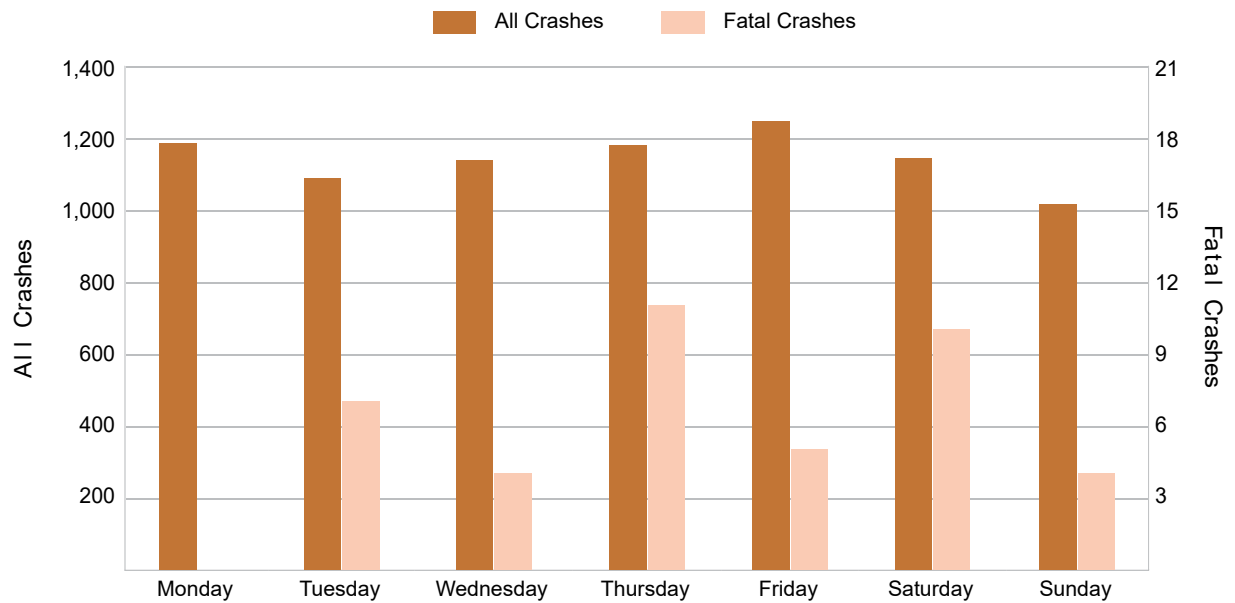
## 2021 Crashes by Month



2021 - Crashes by Day of Week

Day	All Crashes		Fatal Crashes		Injury Crashes			PDO Crashes
	Number	% of Total	Fatal	% of Fatal	A	B	C	Number
Monday	1,184	14.8	0	0.0	26	47	67	1,044
Tuesday	1,088	13.6	7	17.1	27	38	74	942
Wednesday	1,136	14.2	4	9.8	24	45	79	984
Thursday	1,178	14.7	11	26.8	29	51	85	1,002
Friday	1,247	15.6	5	12.2	38	54	83	1,067
Saturday	1,142	14.3	10	24.4	33	53	74	972
Sunday	1,015	12.7	4	9.8	18	45	75	873
<b>Total</b>	<b>7,990</b>	<b>100.0</b>	<b>41</b>	<b>100.0</b>	<b>195</b>	<b>333</b>	<b>537</b>	<b>6,884</b>

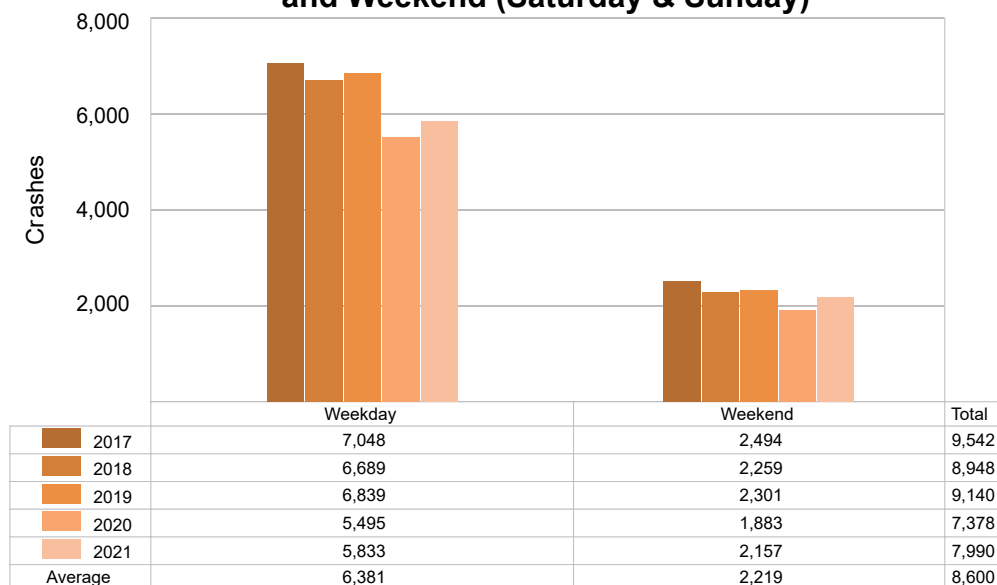
2021 Day of Week and Severity



## 5-Year Trend - Crashes by Weekday and Weekend

Portion of Week	2017		2018		2019		2020		2021	
	Total Crashes	Fatal Crashes	Total Crashes	Fatal Crashes	Total Crashes	Fatal Crashes	Total Crashes	Fatal Crashes	Total Crashes	Fatal Crashes
Weekday	7,048	29	6,689	21	6,839	28	5,495	21	5,833	27
Weekend	2,494	6	2,259	12	2,301	9	1,883	11	2,157	14
<b>Total</b>	<b>9,542</b>	<b>35</b>	<b>8,948</b>	<b>33</b>	<b>9,140</b>	<b>37</b>	<b>7,378</b>	<b>32</b>	<b>7,990</b>	<b>41</b>

### 5-Year Crash Trends by Weekday (Monday - Friday) and Weekend (Saturday & Sunday)

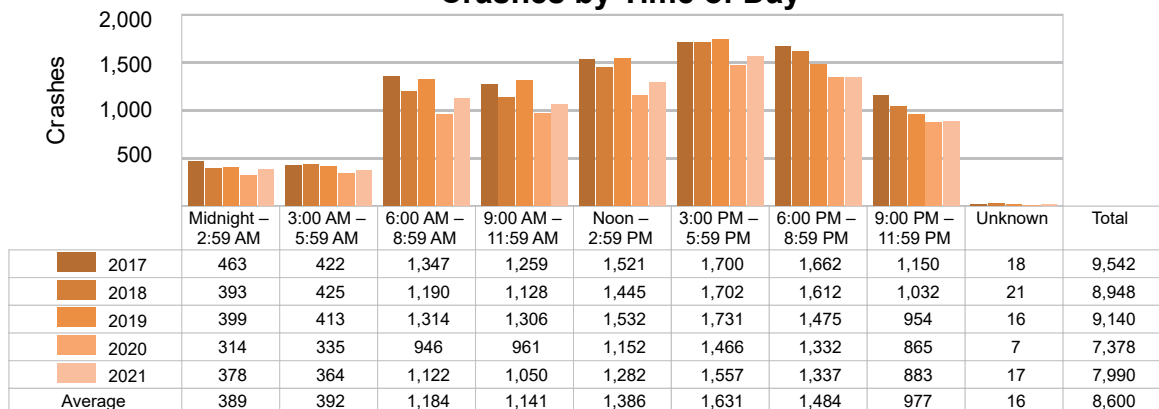


### 5-Year Trend - Crashes by Time of Day

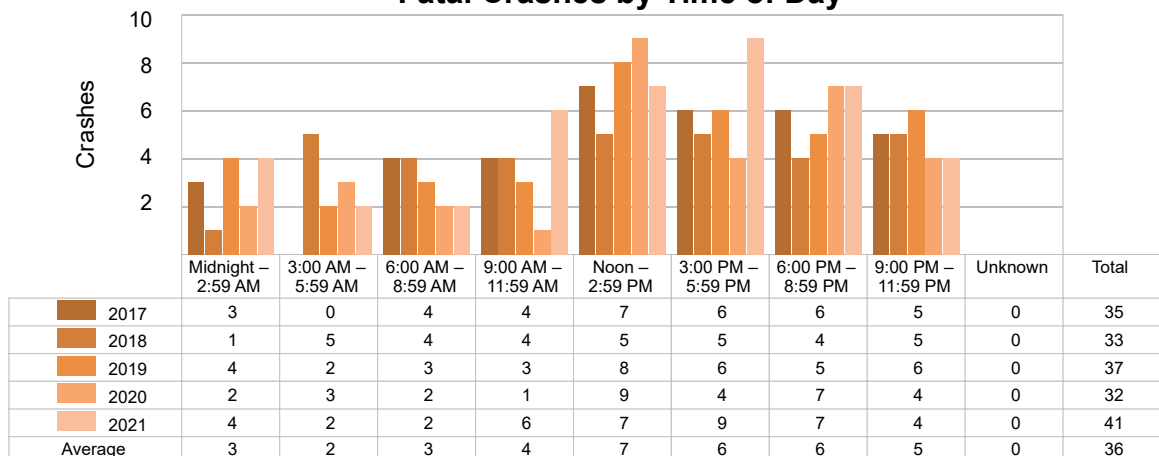
Time of Day	2017		2018		2019		2020		2021	
	Total Crashes	Fatal Crashes	Total Crashes	Fatal Crashes	Total Crashes	Fatal Crashes	Total Crashes	Fatal Crashes	Total Crashes	Fatal Crashes
Midnight – 2:59 AM	463	3	393	1	399	4	314	2	378	4
3:00 AM – 5:59 AM	422	0	425	5	413	2	335	3	364	2
6:00 AM – 8:59 AM	1,347	4	1,190	4	1,314	3	946	2	1,122	2
9:00 AM – 11:59 AM	1,259	4	1,128	4	1,306	3	961	1	1,050	6
Noon – 2:59 PM	1,521	7	1,445	5	1,532	8	1,152	9	1,282	7
3:00 PM – 5:59 PM	1,700 †	6	1,702 †	5	1,731 †	6	1,466 †	4	1,557 †	9
6:00 PM – 8:59 PM	1,662	6	1,612	4	1,475	5	1,332	7	1,337	7
9:00 PM – 11:59 PM	1,150	5	1,032	5	954	6	865	4	883	4
Unknown	18	0	21	0	16	0	7	0	17	0
<b>Total</b>	<b>9,542</b>	<b>35</b>	<b>8,948</b>	<b>33</b>	<b>9,140</b>	<b>37</b>	<b>7,378</b>	<b>32</b>	<b>7,990</b>	<b>41</b>

Note: † Indicates that the highest number of total crashes reported in the 5-year period occurred in the same time period.

### 5-Year Trend Crashes by Time of Day



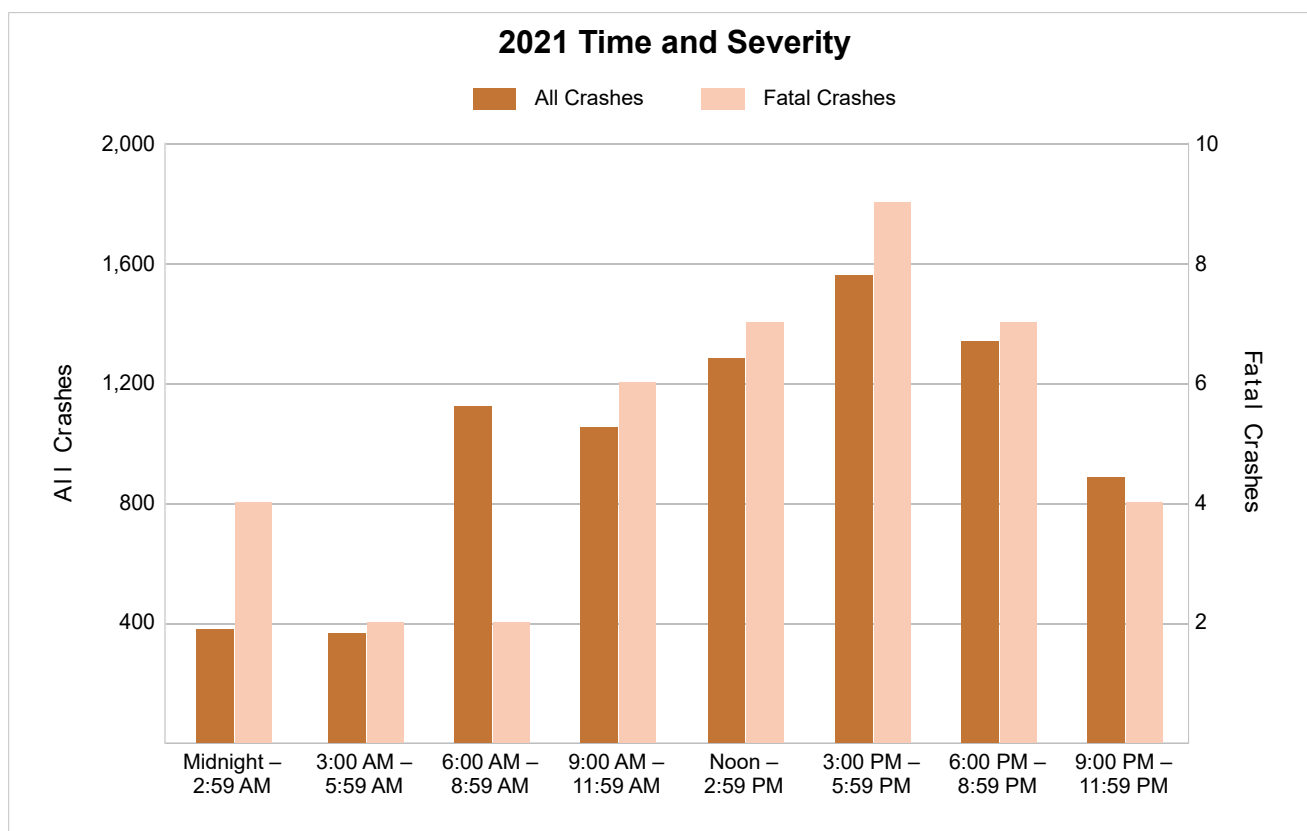
### 5-Year Trend Fatal Crashes by Time of Day



## MSP District 8 - Upper Peninsula (continued)

## 2021 - Time and Severity

Time of Day	All Crashes		Fatal Crashes		Injury Crashes			PDO Crashes
	Number	% of Total	Number	% of Fatal	A	B	C	Number
Midnight – 2:59 AM	378	4.7	4	9.8	14	19	28	313
3:00 AM – 5:59 AM	364	4.6	2	4.9	7	12	17	326
6:00 AM – 8:59 AM	1,122	14.0	2	4.9	15	31	57	1,017
9:00 AM – 11:59 AM	1,050	13.1	6	14.6	32	40	79	893
Noon – 2:59 PM	1,282	16.0	7	17.1	38	72	104	1,061
3:00 PM – 5:59 PM	1,557	19.5	9	22.0	52	84	149	1,263
6:00 PM – 8:59 PM	1,337	16.7	7	17.1	25	46	66	1,193
9:00 PM – 11:59 PM	883	11.1	4	9.8	12	29	37	801
Unknown	17	0.2	0	0.0	0	0	0	17
<b>Total</b>	<b>7,990</b>	<b>100.0</b>	<b>41</b>	<b>100.0</b>	<b>195</b>	<b>333</b>	<b>537</b>	<b>6,884</b>

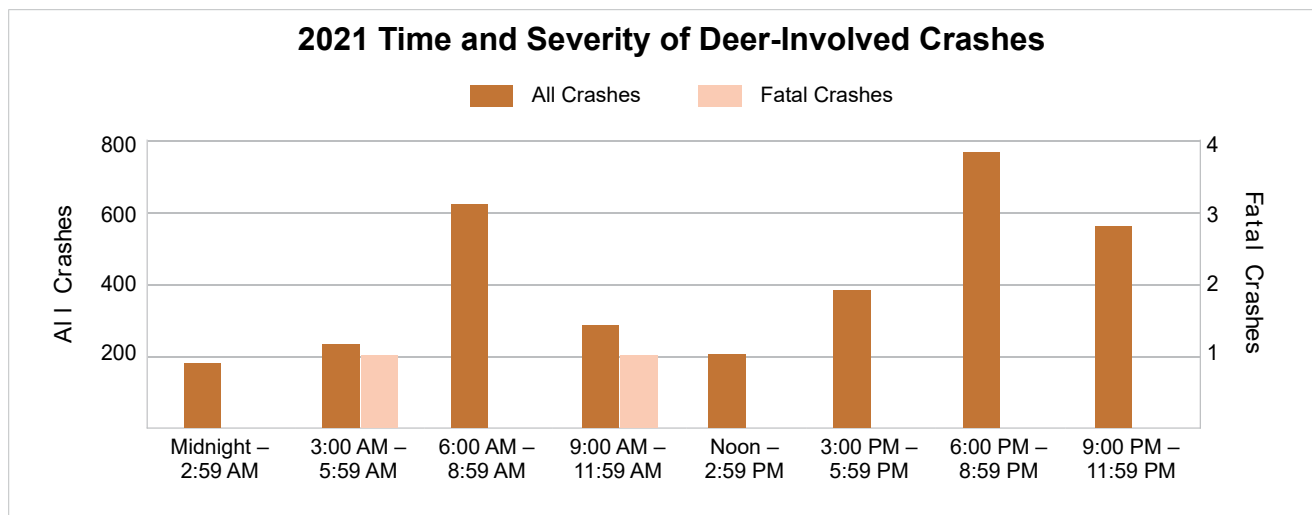
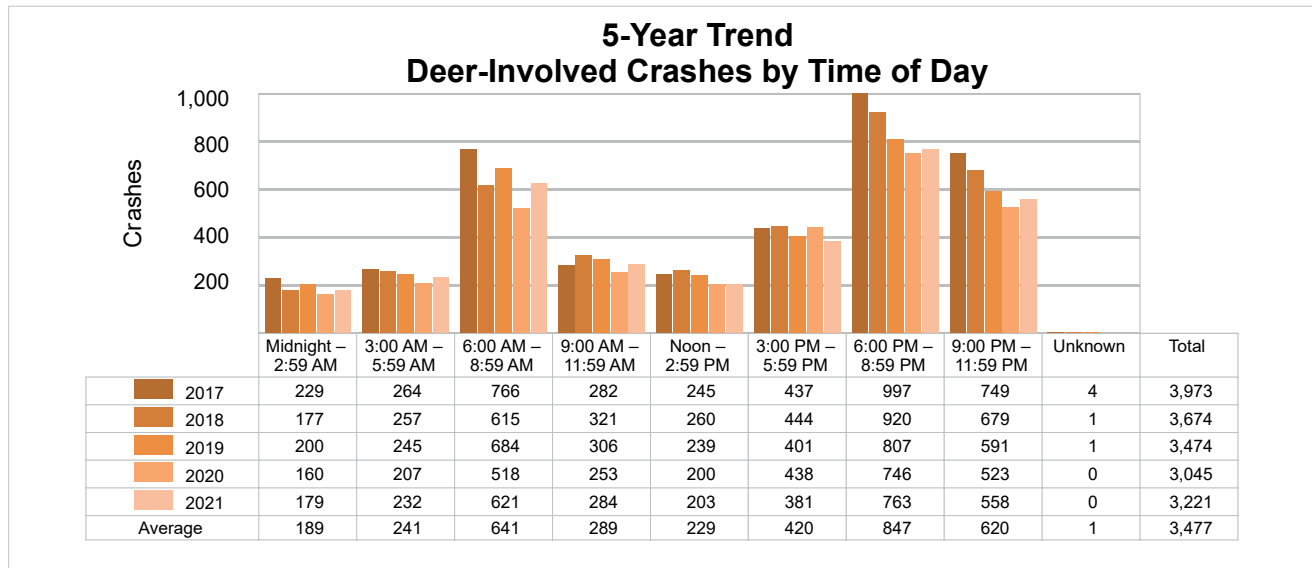




### 5-Year Trend - Deer-Involved Crashes by Time of Day

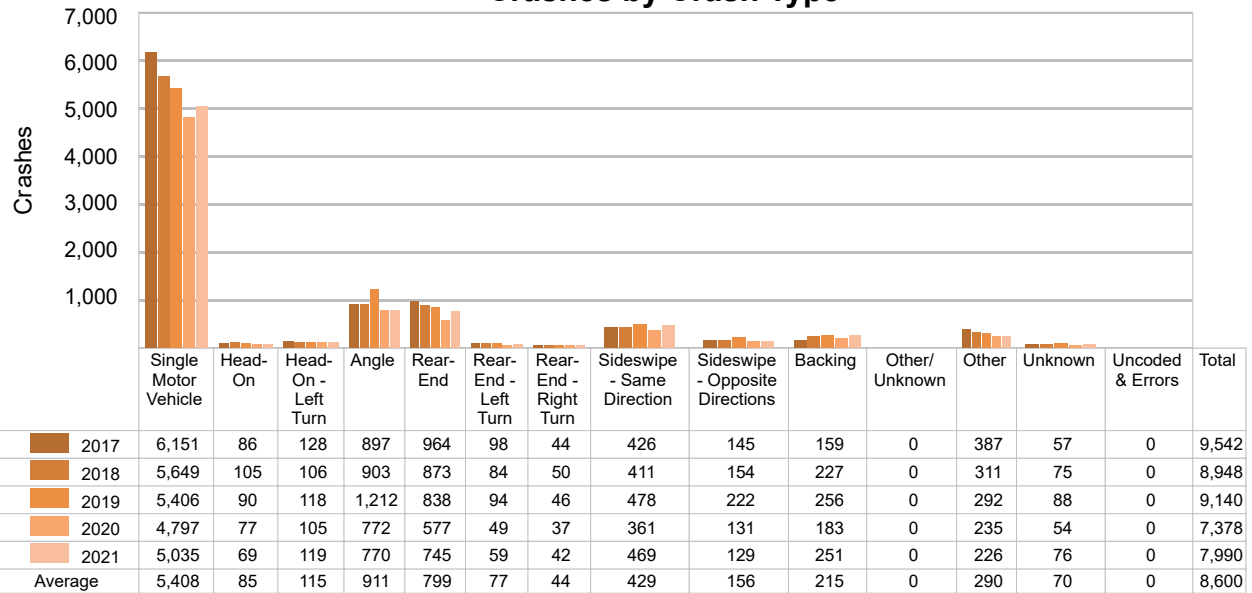
Time of Day	2017		2018		2019		2020		2021	
	Total Crashes	Fatal Crashes	Total Crashes	Fatal Crashes	Total Crashes	Fatal Crashes	Total Crashes	Fatal Crashes	Total Crashes	Fatal Crashes
Midnight – 2:59 AM	229	1	177	0	200	0	160	0	179	0
3:00 AM – 5:59 AM	264	0	257	0	245	0	207	0	232	1
6:00 AM – 8:59 AM	766	0	615	1	684	0	518	0	621	0
9:00 AM – 11:59 AM	282	0	321	1	306	0	253	0	284	1
Noon – 2:59 PM	245	1	260	0	239	0	200	0	203	0
3:00 PM – 5:59 PM	437	0	444	0	401	0	438	0	381	0
6:00 PM – 8:59 PM	997 †	0	920 †	0	807 †	1	746 †	0	763 †	0
9:00 PM – 11:59 PM	749	0	679	0	591	0	523	0	558	0
Unknown	4	0	1	0	1	0	0	0	0	0
<b>Total</b>	<b>3,973</b>	<b>2</b>	<b>3,674</b>	<b>2</b>	<b>3,474</b>	<b>1</b>	<b>3,045</b>	<b>0</b>	<b>3,221</b>	<b>2</b>

Note: † Indicates that the highest number of total crashes reported in the 5-year period occurred in the same time period.



## 5-Year Trend - Crashes by Crash Type

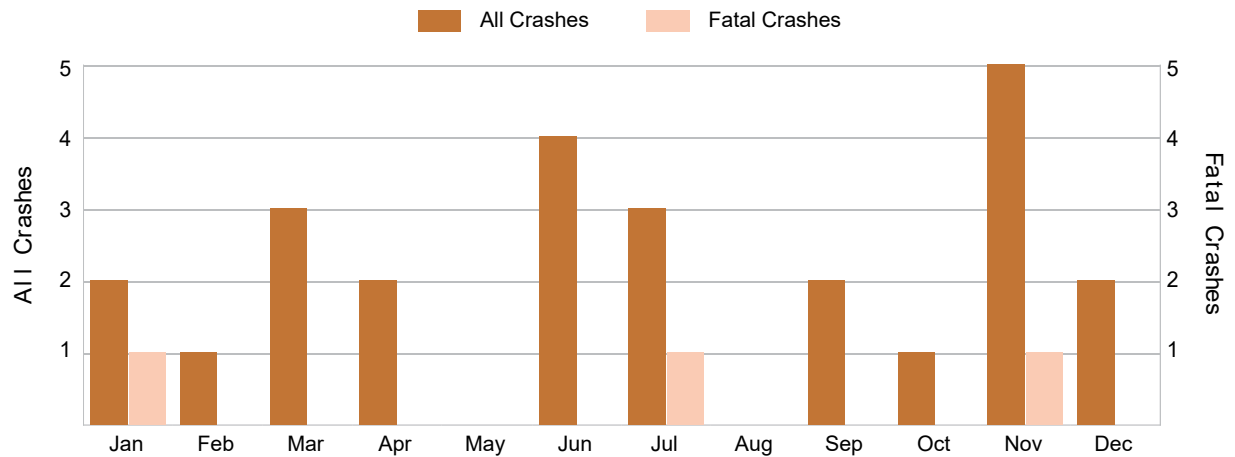
Crash Type	2017		2018		2019		2020		2021	
	Total Crashes	Fatal Crashes	Total Crashes	Fatal Crashes	Total Crashes	Fatal Crashes	Total Crashes	Fatal Crashes	Total Crashes	Fatal Crashes
Single Motor Vehicle	6,151	18	5,649	11	5,406	23	4,797	17	5,035	17
Head-On	86	3	105	9	90	3	77	6	69	7
Head-On - Left Turn	128	0	106	2	118	1	105	1	119	0
Angle	897	6	903	6	1,212	8	772	6	770	7
Rear-End	964	5	873	2	838	0	577	1	745	4
Rear-End - Left Turn	98	0	84	0	94	0	49	0	59	0
Rear-End - Right Turn	44	0	50	0	46	0	37	0	42	0
Sideswipe - Same Direction	426	0	411	0	478	0	361	0	469	1
Sideswipe - Opposite Directions	145	0	154	1	222	2	131	0	129	1
Backing	159	0	227	0	256	0	183	0	251	0
Other/Unknown	0	0	0	0	0	0	0	0	0	0
Other	387	2	311	2	292	0	235	1	226	4
Unknown	57	1	75	0	88	0	54	0	76	0
Uncoded & Errors	0	0	0	0	0	0	0	0	0	0
<b>Total</b>	<b>9,542</b>	<b>35</b>	<b>8,948</b>	<b>33</b>	<b>9,140</b>	<b>37</b>	<b>7,378</b>	<b>32</b>	<b>7,990</b>	<b>41</b>

5-Year Trend  
Crashes by Crash Type

5-Year Trend - Pedestrian-Involved Crashes by Month

Month	2017		2018		2019		2020		2021	
	Total Crashes	Fatal Crashes	Total Crashes	Fatal Crashes	Total Crashes	Fatal Crashes	Total Crashes	Fatal Crashes	Total Crashes	Fatal Crashes
January	0	0	4	1	4	2	3	0	2	1
February	5	0	2	0	2	0	3	0	1	0
March	1	0	1	0	0	0	2	0	3	0
April	1	0	4	0	1	0	0	0	2	0
May	2	0	5	0	1	0	2	0	0	0
June	0	0	1	0	5	1	1	0	4	0
July	0	0	3	0	4	0	5	1	3	1
August	4	0	2	0	1	0	1	0	0	0
September	7	0	5	0	2	0	5	0	2	0
October	3	0	2	0	1	0	1	0	1	0
November	3	0	3	0	6	0	2	0	5	1
December	2	0	5	0	4	0	1	0	2	0
<b>Total</b>	<b>28</b>	<b>0</b>	<b>37</b>	<b>1</b>	<b>31</b>	<b>3</b>	<b>26</b>	<b>1</b>	<b>25</b>	<b>3</b>

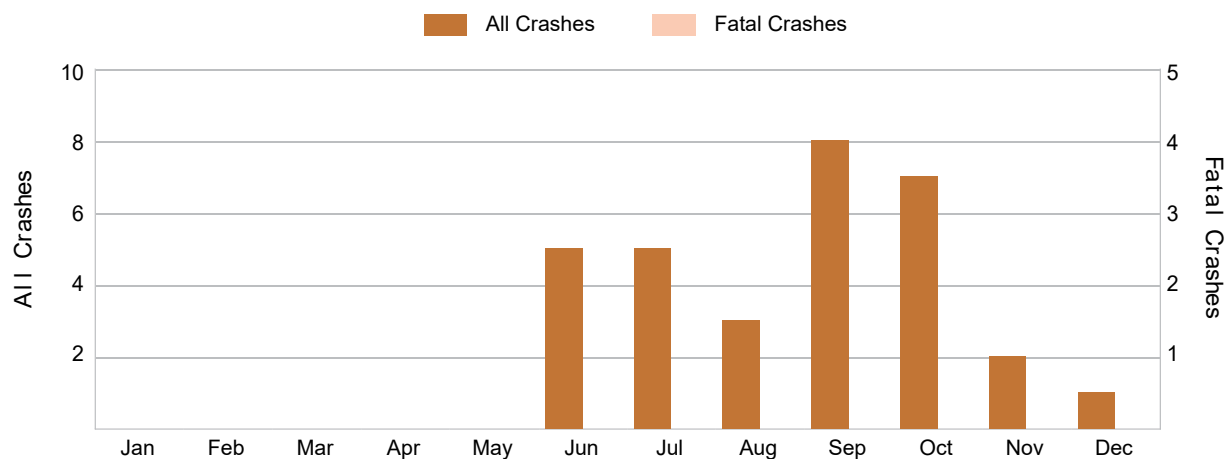
2021 Pedestrian-Involved Crashes by Month



## 5-Year Trend - Bicyclist-Involved Crashes by Month

Month	2017		2018		2019		2020		2021	
	Total Crashes	Fatal Crashes	Total Crashes	Fatal Crashes	Total Crashes	Fatal Crashes	Total Crashes	Fatal Crashes	Total Crashes	Fatal Crashes
January	0	0	0	0	0	0	0	0	0	0
February	0	0	0	0	0	0	0	0	0	0
March	2	0	0	0	0	0	0	0	0	0
April	0	0	1	0	2	0	0	0	0	0
May	2	0	8	0	2	0	0	0	0	0
June	3	0	4	0	6	0	3	0	5	0
July	9	0	6	0	8	0	4	1	5	0
August	3	0	5	0	6	0	5	0	3	0
September	5	0	2	0	5	0	4	0	8	0
October	4	0	1	0	5	0	1	0	7	0
November	0	0	1	0	2	0	1	1	2	0
December	0	0	0	0	0	0	0	0	1	0
<b>Total</b>	<b>28</b>	<b>0</b>	<b>28</b>	<b>0</b>	<b>36</b>	<b>0</b>	<b>18</b>	<b>2</b>	<b>31</b>	<b>0</b>

## 2021 Bicyclist-Involved Crashes by Month



There were no fatal bicyclist-involved crashes in MSP District 8 - Upper Peninsula in 2021.

## 2021 - Reported Motor Vehicle Crashes by County

County	Crashes												
	Total	Fatal	Injury	Property Damage	Inter-State	US Route	State Route	Local Street	Alcohol-Involved	Drug-Involved	Deer-Involved	Pedestrian-Involved	Bicyclist-Involved
Alger	233	2	29	202	0	21	131	80	7	1	78	0	0
Baraga	270	2	26	242	0	123	47	94	10	5	166	0	1
Chippewa	781	3	118	660	181	0	220	379	26	16	271	3	5
Delta	1,075	4	140	931	0	410	182	475	45	19	467	5	4
Dickinson	873	6	98	769	0	292	205	362	21	12	421	1	5
Gogebic	225	0	39	186	0	108	22	95	22	4	66	0	0
Houghton	885	7	129	749	0	339	250	295	31	13	259	3	4
Iron	479	2	34	443	0	236	81	159	16	2	326	3	0
Keweenaw	67	0	11	56	0	29	8	29	3	0	22	0	0
Luce	126	2	19	105	0	0	76	50	6	1	58	0	0
Mackinac	496	1	56	439	95	131	123	141	16	9	268	0	2
Marquette	1,544	6	212	1,326	0	487	257	797	67	42	390	4	8
Menominee	308	2	73	233	0	116	36	154	30	8	61	3	1
Ontonagon	284	2	42	240	0	55	160	66	13	4	186	0	0
Schoolcraft	344	2	39	303	0	145	109	85	12	4	182	3	1
<b>Total</b>	<b>7,990</b>	<b>41</b>	<b>1,065</b>	<b>6,884</b>	<b>276</b>	<b>2,492</b>	<b>1,907</b>	<b>3,261</b>	<b>325</b>	<b>140</b>	<b>3,221</b>	<b>25</b>	<b>31</b>

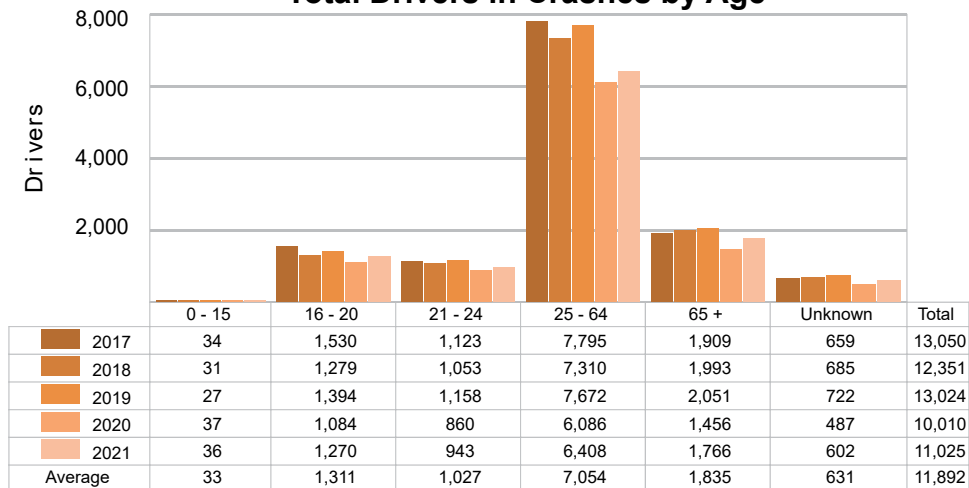
## 2021 - People in Reported Motor Vehicle Crashes by County

County	People					
	Fatalities	Suspected Serious Injuries	Suspected Minor Injuries	Possible Injuries	No Injuries	Uncoded & Errors
Alger	2	17	15	22	295	7
Baraga	2	10	32	21	352	15
Chippewa	3	57	78	124	1,178	69
Delta	5	47	56	203	1,473	69
Dickinson	7	31	75	131	1,167	63
Gogebic	0	16	32	38	298	26
Houghton	7	40	113	141	1,273	81
Iron	2	20	16	30	553	24
Keweenaw	0	6	3	14	85	7
Luce	2	9	14	10	146	5
Mackinac	1	28	38	51	619	13
Marquette	7	69	159	266	2,273	221
Menominee	2	34	46	88	442	26
Ontonagon	2	27	35	26	305	11
Schoolcraft	2	33	15	43	434	9
<b>Total</b>	<b>44</b>	<b>444</b>	<b>727</b>	<b>1,208</b>	<b>10,893</b>	<b>646</b>

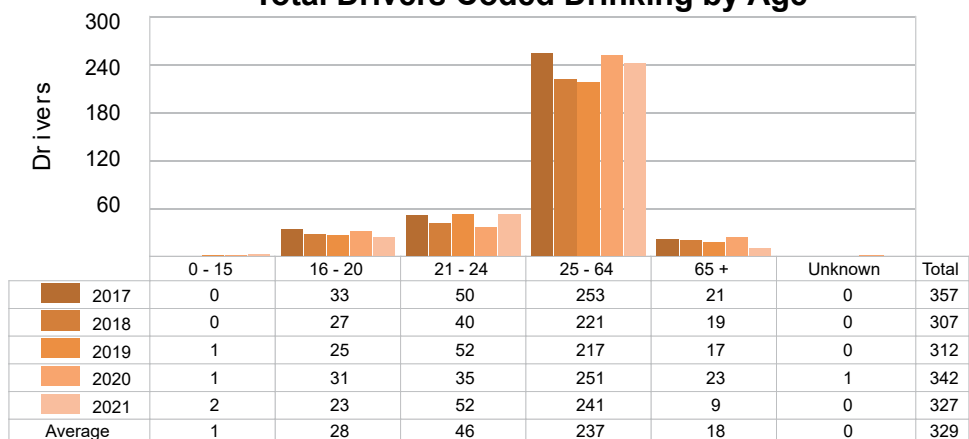
## 5-Year Trend - Drivers in Crashes Coded Drinking by Driver Age

Driver Age	2017		2018		2019		2020		2021	
	Total Drivers in Crashes	Total Drivers Coded Drinking	Total Drivers in Crashes	Total Drivers Coded Drinking	Total Drivers in Crashes	Total Drivers Coded Drinking	Total Drivers in Crashes	Total Drivers Coded Drinking	Total Drivers in Crashes	Total Drivers Coded Drinking
0 - 15	34	0	31	0	27	1	37	1	36	2
16 - 20	1,530	33	1,279	27	1,394	25	1,084	31	1,270	23
21 - 24	1,123	50	1,053	40	1,158	52	860	35	943	52
25 - 64	7,795	253	7,310	221	7,672	217	6,086	251	6,408	241
65 +	1,909	21	1,993	19	2,051	17	1,456	23	1,766	9
Unknown	659	0	685	0	722	0	487	1	602	0
<b>Total</b>	<b>13,050</b>	<b>357</b>	<b>12,351</b>	<b>307</b>	<b>13,024</b>	<b>312</b>	<b>10,010</b>	<b>342</b>	<b>11,025</b>	<b>327</b>

### 5-Year Trend Total Drivers in Crashes by Age



### 5-Year Trend Total Drivers Coded Drinking by Age



**2021 - Bodily Alcohol Concentration (BAC) Results Among All Vehicle Drivers in Alcohol-Involved Crashes by Age**

Age Group	Drivers				BAC Result Range for Drivers Coded Drinking				
	Total Drivers in Alcohol-Involved Crashes	Total Drivers Tested in all Crashes	Total Drivers Coded Drinking, Tested	Total Drivers Coded Drinking	BAC = 0.00	BAC 0.01 g/dL to 0.07 g/dL	BAC 0.08 g/dL to 0.16 g/dL	BAC 0.17 g/dL and Above	BAC Not Reported
0 - 15	2	1	1	2	0	0	0	0	2
16 - 20	33	29	17	23	0	2	6	4	11
21 - 24	58	46	36	52	0	4	20	8	20
25 - 64	285	272	179	241	0	20	50	61	110
65 +	14	22	7	9	0	2	0	2	5
Unknown	27	0	0	0	0	0	0	0	0
<b>Total</b>	<b>419</b>	<b>370</b>	<b>240</b>	<b>327</b>	<b>0</b>	<b>28</b>	<b>76</b>	<b>75</b>	<b>148</b>

Notes: BAC measured in grams (g) per deciliter (dL).

BAC may not be reported if drivers are not tested or if the results are not available immediately (as in the case of a blood test).

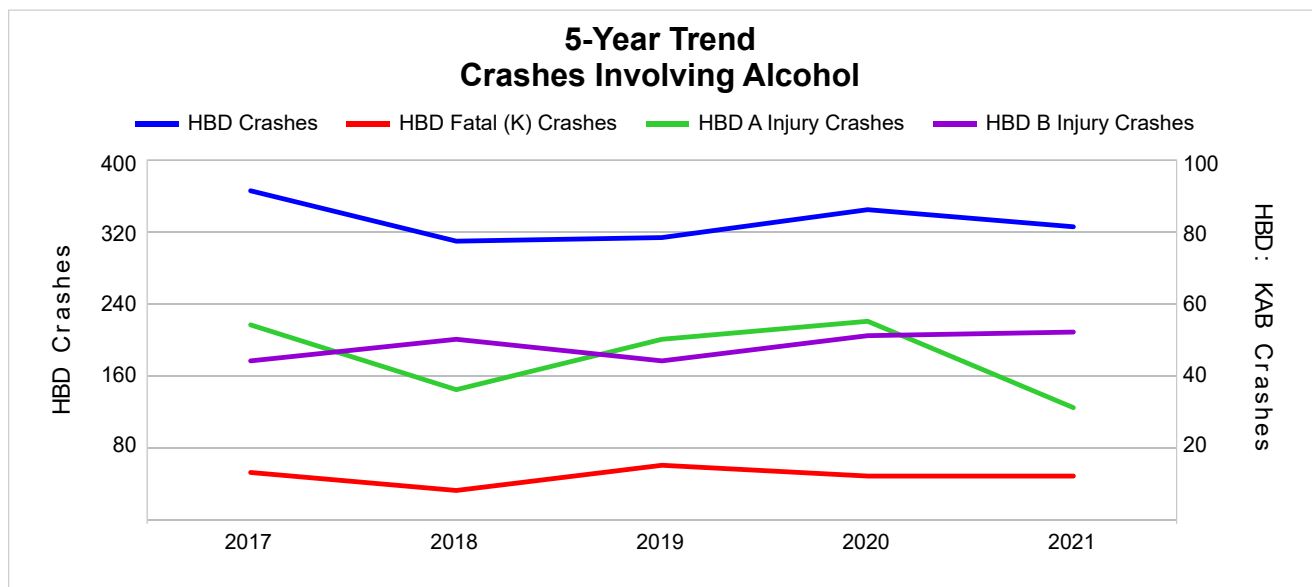
A driver may be coded by the officer as drinking even though no test is administered.

**5-Year Trend - Crashes Involving Alcohol**

Year	All Crashes	HBD Crashes	% HBD	Fatal Crashes	HBD Fatal Crashes	% HBD	A Injury Crashes	HBD A Injury Crashes	% HBD	B Injury Crashes	HBD B Injury Crashes	% HBD
2017	9,542	365	3.8	35	13	37.1	195	54	27.7	333	44	13.2
2018	8,948	309	3.5	33	8	24.2	182	36	19.8	338	50	14.8
2019	9,140	313	3.4	37	15	40.5	200	50	25.0	318	44	13.8
2020	7,378	344	4.7	32	12	37.5	211	55	26.1	311	51	16.4
2021	7,990	325	4.1	41 **	12	29.3	195	31 *	15.9 *	333	52 **	15.6

Note: \* Indicates that the most recent year is the lowest number or percentage reported in the 5-year period in that column.

\*\* Indicates that the most recent year is the highest number or percentage reported in the 5-year period in that column.



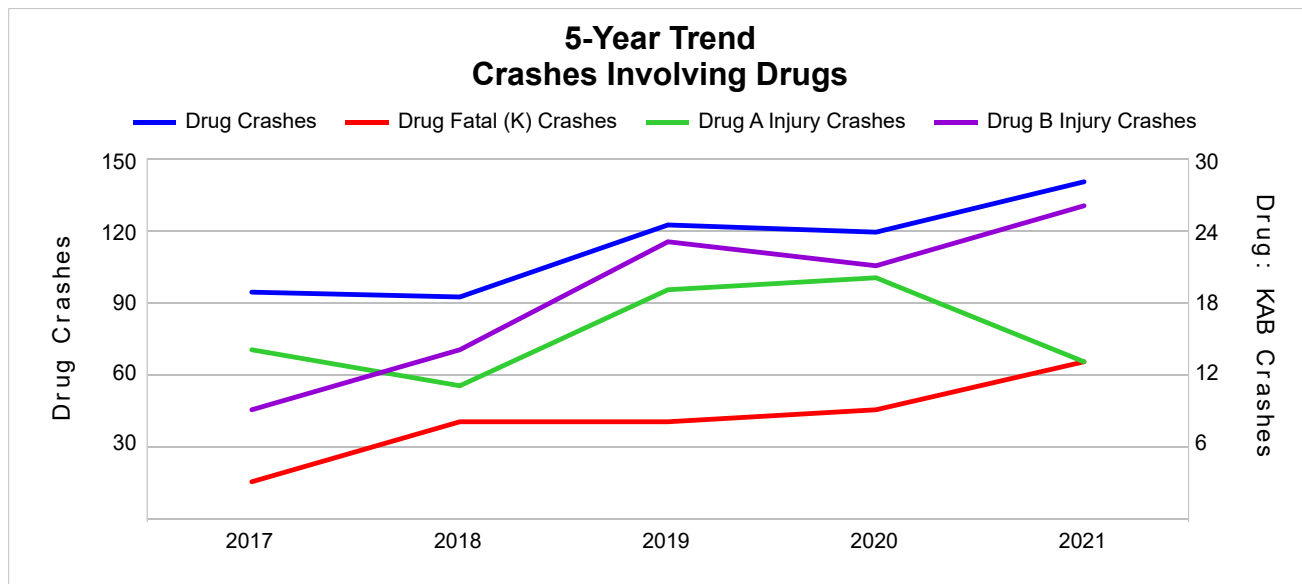
Note: Had-Been-Drinking (HBD)

## 5-Year Trend - Crashes Involving Drugs

Year	All Crashes	Drug Crashes	% Drug	Fatal Crashes	Drug Fatal Crashes	% Drug	A Injury Crashes	Drug A Injury Crashes	% Drug	B Injury Crashes	Drug B Injury Crashes	% Drug
2017	9,542	94	1.0	35	3	8.6	195	14	7.2	333	9	2.7
2018	8,948	92	1.0	33	8	24.2	182	11	6.0	338	14	4.1
2019	9,140	122	1.3	37	8	21.6	200	19	9.5	318	23	7.2
2020	7,378	119	1.6	32	9	28.1	211	20	9.5	311	21	6.8
2021	7,990	140 **	1.8 **	41 **	13 **	31.7 **	195	13	6.7	333	26 **	7.8 **

Note: \* Indicates that the most recent year is the lowest number or percentage reported in the 5-year period in that column.

\*\* Indicates that the most recent year is the highest number or percentage reported in the 5-year period in that column.



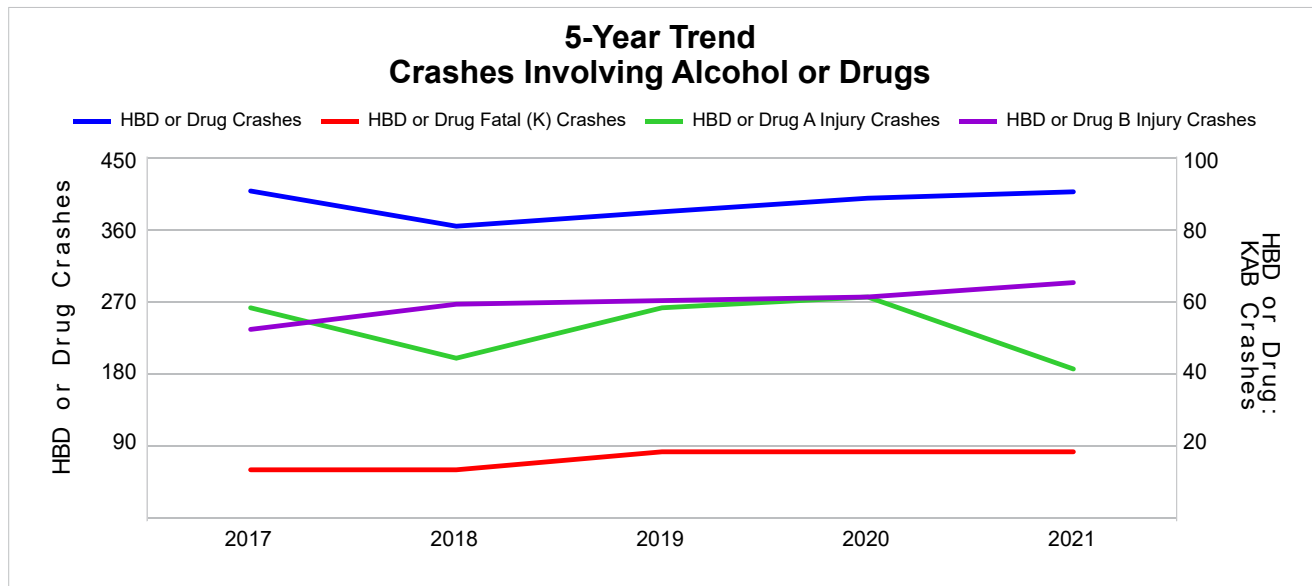


## 5-Year Trend - Crashes Involving Alcohol or Drugs

Year	All Crashes	HBD or Drug Crashes	% HBD or Drug	Fatal Crashes	HBD or Drug Fatal Crashes	% HBD or Drug	A Injury Crashes	HBD or Drug A Injury Crashes	% HBD or Drug	B Injury Crashes	HBD or Drug B Injury Crashes	% HBD or Drug
2017	9,542	407	4.3	35	13	37.1	195	58	29.7	333	52	15.6
2018	8,948	363	4.1	33	13	39.4	182	44	24.2	338	59	17.5
2019	9,140	381	4.2	37	18	48.6	200	58	29.0	318	60	18.9
2020	7,378	398	5.4	32	18	56.3	211	61	28.9	311	61	19.6
2021	7,990	406	5.1	41 **	18	43.9	195	41 *	21.0 *	333	65 **	19.5

Note: \* Indicates that the most recent year is the lowest number or percentage reported in the 5-year period in that column.

\*\* Indicates that the most recent year is the highest number or percentage reported in the 5-year period in that column.



Note: Had-Been-Drinking (HBD)

## 2021 - Restraints Worn Among Vehicle Drivers and Injured Passengers by Vehicle Type

Vehicle Type	Total Occupants			Fatalities			A - Suspected Serious			B - Suspected Minor			C - Possible Injury			No Injury		
	Total	Used Restraint	%	Total	Used Restraint	%	Total	Used Restraint	%	Total	Used Restraint	%	Total	Used Restraint	%	Total	Used Restraint	%
Passenger Car, SUV, Van	7,849	6,945	88.5	22	11	50.0	98	75	76.5	262	223	85.1	548	500	91.2	6,591	6,136	93.1
Motor Home	16	15	93.8	0	0	0.0	0	0	0.0	0	0	0.0	0	0	0.0	15	15	100.0
Pickup Truck	2,654	2,305	86.9	10	4	40.0	44	18	40.9	68	57	83.8	139	124	89.2	2,266	2,102	92.8
Small Truck Under 10,000 lbs. GVWR	69	59	85.5	0	0	0.0	0	0	0.0	1	1	100.0	5	4	80.0	61	54	88.5
Motorcycle	126	76	60.3	4	0	0.0	46	28	60.9	35	23	65.7	17	9	52.9	23	16	69.6
Moped/Goped	17	8	47.1	0	0	0.0	3	2	66.7	7	3	42.9	2	1	50.0	5	2	40.0
Go-Cart/Golf Cart	0	0	0.0	0	0	0.0	0	0	0.0	0	0	0.0	0	0	0.0	0	0	0.0
Snowmobile	44	43	97.7	1	1	100.0	17	17	100.0	12	12	100.0	5	5	100.0	8	8	100.0
Off-Road Vehicle (ORV)/All-Terrain Vehicle (ATV)	90	56	62.2	4	2	50.0	16	9	56.3	15	8	53.3	32	22	68.8	22	15	68.2
Other (non-registered farm equipment, construction equipment, snow plows, etc.)	39	19	48.7	0	0	0.0	1	0	0.0	2	0	0.0	1	0	0.0	28	19	67.9
Truck/Bus (over 10,000 lbs. GVWR/ 8+ occupants/ hazmat placard)	316	289	91.5	0	0	0.0	1	1	100.0	8	8	100.0	9	6	66.7	292	274	93.8
Uncoded & Errors	171	0	0.0	0	0	0.0	0	0	0.0	0	0	0.0	0	0	0.0	0	0	0.0
<b>Total</b>	<b>11,391</b>	<b>9,815</b>	<b>86.2</b>	<b>41</b>	<b>18</b>	<b>43.9</b>	<b>226</b>	<b>150</b>	<b>66.4</b>	<b>410</b>	<b>335</b>	<b>81.7</b>	<b>758</b>	<b>671</b>	<b>88.5</b>	<b>9,311</b>	<b>8,641</b>	<b>92.8</b>

Note: Restraint Use includes shoulder belt only used, lap belt only used, both lap and shoulder belts used, child restraint used, restraint failure, and helmet worn.

## 2021 - Restraints Worn Among Vehicle Drivers and Injured Passengers by Age

Age Group	Total Occupants			Fatalities			A - Suspected Serious			B - Suspected Minor			C - Possible Injury			No Injury		
	Total	Used Restraint	%	Total	Used Restraint	%	Total	Used Restraint	%	Total	Used Restraint	%	Total	Used Restraint	%	Total	Used Restraint	%
0 - 15	108	86	79.6	0	0	0.0	13	9	69.2	30	22	73.3	48	42	87.5	17	13	76.5
16 - 20	1,321	1,206	91.3	4	2	50.0	23	19	82.6	57	49	86.0	106	89	84.0	1,127	1,047	92.9
21 - 24	978	904	92.4	1	0	0.0	15	11	73.3	46	38	82.6	69	54	78.3	845	801	94.8
25 - 64	6,575	5,938	90.3	28	12	42.9	135	82	60.7	225	179	79.6	405	364	89.9	5,751	5,301	92.2
65 +	1,807	1,681	93.0	8	4	50.0	40	29	72.5	52	47	90.4	130	122	93.8	1,568	1,479	94.3
Unknown	602	0	0.0	0	0	0.0	0	0	0.0	0	0	0.0	0	0	0.0	3	0	0.0
<b>Total</b>	<b>11,391</b>	<b>9,815</b>	<b>86.2</b>	<b>41</b>	<b>18</b>	<b>43.9</b>	<b>226</b>	<b>150</b>	<b>66.4</b>	<b>410</b>	<b>335</b>	<b>81.7</b>	<b>758</b>	<b>671</b>	<b>88.5</b>	<b>9,311</b>	<b>8,641</b>	<b>92.8</b>

Note: Restraint Use includes shoulder belt only used, lap belt only used, both lap and shoulder belts used, child restraint used, restraint failure, and helmet worn.

## 5-Year Trend - Restraint Use Among Drivers

Restraint Use	2017			2018			2019			2020			2021		
	Drivers	Fatal Drivers	Injured Drivers	Drivers	Fatal Drivers	Injured Drivers	Drivers	Fatal Drivers	Injured Drivers	Drivers	Fatal Drivers	Injured Drivers	Drivers	Fatal Drivers	Injured Drivers
No Belts Available	48	0	21	15	1	0	30	0	0	21	0	5	34	0	9
Shoulder Belt Only Used	85	0	4	66	0	11	76	0	9	77	0	17	66	0	9
Lap Belt Only Used	26	0	2	19	0	1	32	0	1	26	1	1	21	0	6
Both Lap & Shoulder Belt Used	11,488	9	949	10,722	13	904	11,231	11	852	8,524	7	741	9,301	12	751
No Belts Used	101	9	50	92	7	45	89	6	33	103	10	44	99	12	41
Child Restraint Used - Forward Facing	2	0	1	1	0	1	0	0	0	0	0	0	0	0	0
Child Restraint Not Used, Unavailable or Improper Use	0	0	0	0	0	0	0	0	0	0	0	0	0	0	0
Child Restraint Used - Rear Facing	0	0	0	0	0	0	0	0	0	0	0	0	0	0	0
Child Restraint Used - Booster Seat	0	0	0	0	0	0	0	0	0	0	0	0	0	0	0
Restraint Failure	6	0	1	1	0	0	5	0	0	3	0	1	3	0	1
Restraint Use Unknown	1,053	1	46	1,214	2	54	1,292	1	42	1,013	1	51	1,270	3	63
Helmet Worn	107	5	71	131	3	84	177	7	118	157	3	113	140	2	109
Helmet Not Worn	48	3	35	40	2	29	53	5	36	63	3	44	58	5	44
Helmet Use Unknown	16	1	9	13	0	8	11	1	2	9	0	5	3	1	1
Uncoded & Errors	70	0	0	37	0	0	28	0	0	14	0	0	30	0	0
<b>Total</b>	<b>13,050</b>	<b>28</b>	<b>1,189</b>	<b>12,351</b>	<b>28</b>	<b>1,137</b>	<b>13,024</b>	<b>31</b>	<b>1,093</b>	<b>10,010</b>	<b>25</b>	<b>1,022</b>	<b>11,025</b>	<b>35</b>	<b>1,034</b>

## 5-Year Trend - Restraint Use Among Drivers Coded Drinking

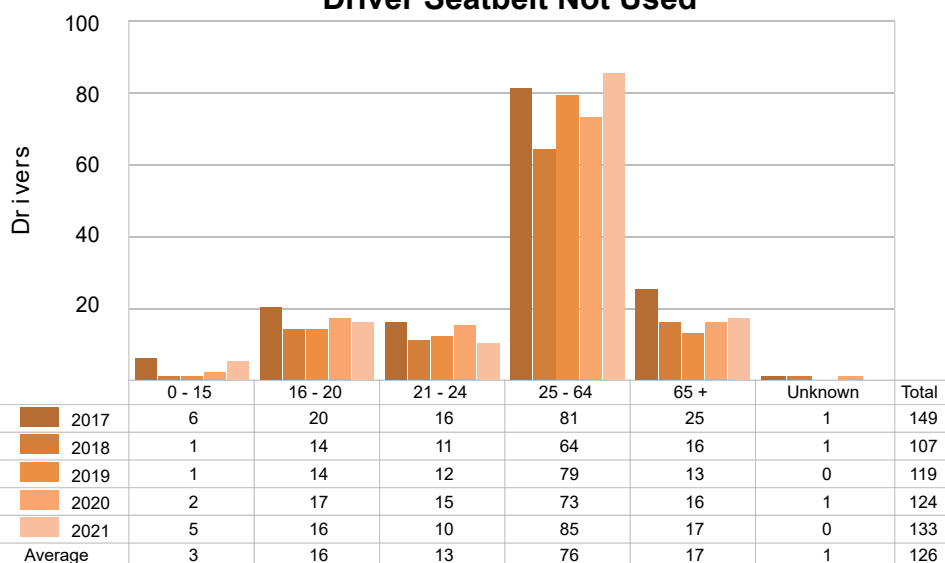
Restraint Use	2017			2018			2019			2020			2021		
	Drivers	Fatal Drivers	Injured Drivers	Drivers	Fatal Drivers	Injured Drivers	Drivers	Fatal Drivers	Injured Drivers	Drivers	Fatal Drivers	Injured Drivers	Drivers	Fatal Drivers	Injured Drivers
No Belts Available	3	0	3	0	0	0	0	0	0	1	0	0	1	0	0
Shoulder Belt Only Used	2	0	1	2	0	1	1	0	0	2	0	1	3	0	2
Lap Belt Only Used	0	0	0	1	0	0	2	0	1	1	0	0	2	0	1
Both Lap & Shoulder Belt Used	228	1	64	176	1	47	185	2	55	198	1	65	182	2	55
No Belts Used	34	4	22	22	2	17	25	3	17	40	6	25	29	4	18
Child Restraint Used - Forward Facing	0	0	0	0	0	0	0	0	0	0	0	0	0	0	0
Child Restraint Not Used, Unavailable or Improper Use	0	0	0	0	0	0	0	0	0	0	0	0	0	0	0
Child Restraint Used - Rear Facing	0	0	0	0	0	0	0	0	0	0	0	0	0	0	0
Child Restraint Used - Booster Seat	0	0	0	0	0	0	0	0	0	0	0	0	0	0	0
Restraint Failure	0	0	0	0	0	0	0	0	0	0	0	0	0	0	0
Restraint Use Unknown	73	1	20	83	2	23	62	1	15	76	0	22	92	2	18
Helmet Worn	8	3	4	16	0	14	17	2	14	9	2	7	8	1	7
Helmet Not Worn	6	1	5	4	1	3	17	3	11	13	0	12	10	2	8
Helmet Use Unknown	3	1	2	3	0	2	3	1	0	2	0	2	0	0	0
Uncoded & Errors	0	0	0	0	0	0	0	0	0	0	0	0	0	0	0
<b>Total</b>	<b>357</b>	<b>11</b>	<b>121</b>	<b>307</b>	<b>6</b>	<b>107</b>	<b>312</b>	<b>12</b>	<b>113</b>	<b>342</b>	<b>9</b>	<b>134</b>	<b>327</b>	<b>11</b>	<b>109</b>

## 5-Year Trend - Seatbelt Not Used Among Drivers by Age

Age Group	2017			2018			2019			2020			2021		
	Drivers	Fatal Drivers	Injured Drivers	Drivers	Fatal Drivers	Injured Drivers	Drivers	Fatal Drivers	Injured Drivers	Drivers	Fatal Drivers	Injured Drivers	Drivers	Fatal Drivers	Injured Drivers
0 - 15	6	0	6	1	0	1	1	0	0	2	0	1	5	0	2
16 - 20	20	0	7	14	1	6	14	0	7	17	0	7	16	1	8
21 - 24	16	1	11	11	1	5	12	0	7	15	0	10	10	1	6
25 - 64	81	6	41	64	4	31	79	5	19	73	8	24	85	8	29
65 +	25	2	6	16	2	2	13	1	0	16	2	7	17	2	5
Unknown	1	0	0	1	0	0	0	0	0	1	0	0	0	0	0
<b>Total</b>	<b>149</b>	<b>9</b>	<b>71</b>	<b>107</b>	<b>8</b>	<b>45</b>	<b>119</b>	<b>6</b>	<b>33</b>	<b>124</b>	<b>10</b>	<b>49</b>	<b>133</b>	<b>12</b>	<b>50</b>

Note: Seatbelt Not Used includes no belts available or no belts used.

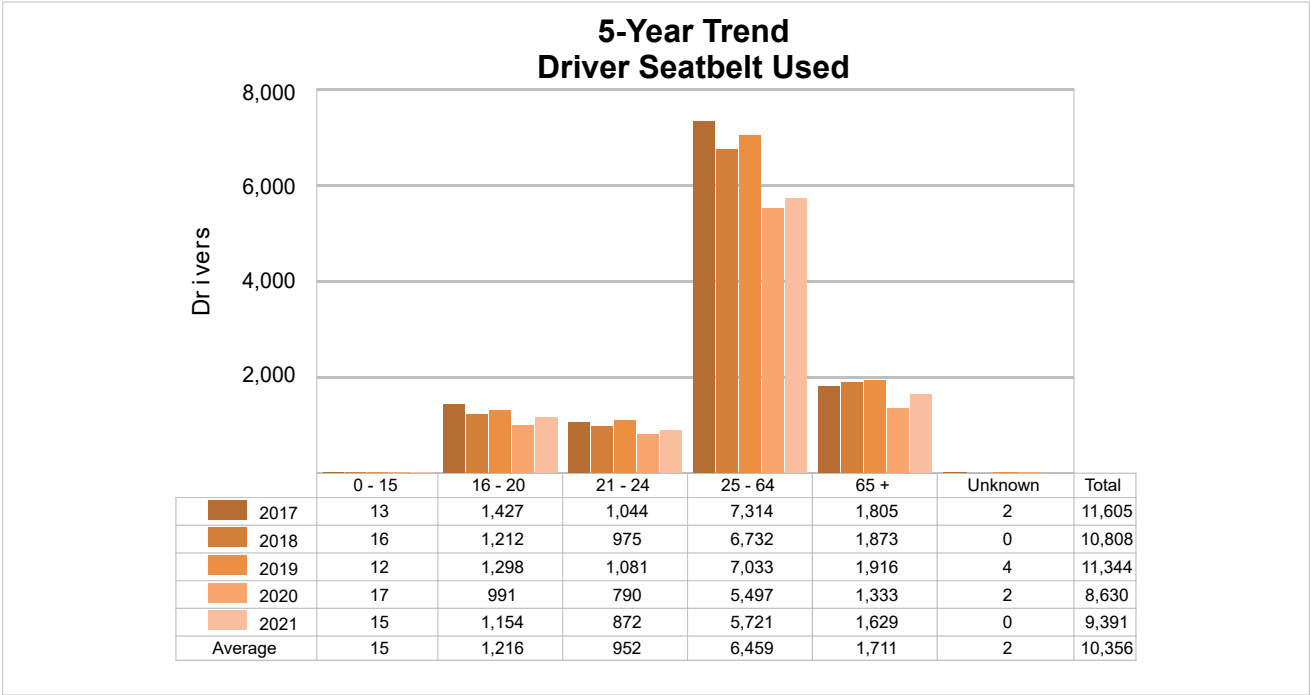
### 5-Year Trend Driver Seatbelt Not Used



5-Year Trend - Seatbelt Used Among Drivers by Age

Age Group	2017			2018			2019			2020			2021		
	Drivers	Fatal Drivers	Injured Drivers	Drivers	Fatal Drivers	Injured Drivers	Drivers	Fatal Drivers	Injured Drivers	Drivers	Fatal Drivers	Injured Drivers	Drivers	Fatal Drivers	Injured Drivers
0 - 15	13	0	4	16	0	2	12	0	3	17	0	2	15	0	4
16 - 20	1,427	1	151	1,212	2	126	1,298	3	118	991	0	95	1,154	2	109
21 - 24	1,044	1	89	975	2	82	1,081	0	94	790	0	92	872	0	72
25 - 64	7,314	3	555	6,732	5	552	7,033	6	478	5,497	4	445	5,721	7	432
65 +	1,805	4	157	1,873	4	154	1,916	2	169	1,333	4	126	1,629	3	150
Unknown	2	0	0	0	0	0	4	0	0	2	0	0	0	0	0
Total	11,605	9	956	10,808	13	916	11,344	11	862	8,630	8	760	9,391	12	767

Note: Seatbelt Used includes shoulder belt only used, lap belt only used, both lap and shoulder belts used, and restraint failure.



## 5-Year Trend - Drivers in Crashes by Hazardous Action

Hazardous Action	2017		2018		2019		2020		2021	
	Total Drivers in Crashes	Drivers in Fatal Crashes	Total Drivers in Crashes	Drivers in Fatal Crashes	Total Drivers in Crashes	Drivers in Fatal Crashes	Total Drivers in Crashes	Drivers in Fatal Crashes	Total Drivers in Crashes	Drivers in Fatal Crashes
None	7,832	20	7,405	29	7,617	16	5,981	19	6,535	29
Speed Too Fast	1,182	11	1,007	9	1,127	7	857	9	832	8
Speed Too Slow	9	0	11	0	3	0	3	0	6	0
Failed to Yield	903	6	886	4	1,049	5	716	3	788	7
Disregard Traffic Control	111	2	122	0	153	2	129	0	138	2
Drove Wrong Way	6	0	9	2	9	0	2	0	9	0
Drove Left of Center	52	0	70	4	64	3	64	1	61	2
Improper Passing	46	0	56	0	55	0	36	1	50	0
Improper Lane Use	135	1	151	0	148	1	113	1	150	0
Improper Turn	110	0	84	1	118	0	95	1	107	0
Improper/No Signal	15	0	17	0	17	0	10	0	15	0
Improper Backing	263	0	283	0	313	0	200	0	264	0
Unable to Stop in Assured Clear Distance	941	4	904	2	897	0	551	0	720	2
Other	396	2	350	0	405	4	357	2	347	1
Unknown	408	3	492	4	547	10	411	10	495	10
Reckless Driving	68	0	45	2	43	1	55	1	57	5
Careless/Negligent Driving	521	4	432	2	442	3	429	2	447	5
Uncoded & Errors	52	0	27	0	17	0	1	0	4	1
<b>Total</b>	<b>13,050</b>	<b>53</b>	<b>12,351</b>	<b>59</b>	<b>13,024</b>	<b>52</b>	<b>10,010</b>	<b>50</b>	<b>11,025</b>	<b>72</b>

### Office of Highway Safety Planning

---

Physical Address:  
7150 Harris Drive  
Dimondale, Michigan 48821

Mailing Address:  
P.O. Box 30634  
Lansing, Michigan 48909

Find us on the web:  
[MichiganTrafficCrashFacts.org](http://MichiganTrafficCrashFacts.org)  
[mtcf-info@umich.edu](mailto:mtcf-info@umich.edu)

