



2021

**MTCF**  
Michigan Traffic  
Crash Facts

# Michigan Traffic Crash Facts

## Reporting Criteria

Please pay particular attention to the wording when interpreting the three levels of data gathered for this report.

### Crash

The Crash Level analyzes data related to crash events and returns one result per crash.

Examples: Time, weather, and location.

### Units

The Units Level analyzes the experience of the units in the crash and returns one result per vehicle, driver, pedestrian, bicyclist, or train.

Examples: Vehicle type, driver condition, and unit events.

### People

The People Level analyzes the experience of the people involved in the crash and returns one result per occupant/person/party.

Examples: Age, injury severity, and seat belt or helmet use.

### **KABCO Injury Indicator:**

K = Killed

A = Suspected Serious Injury

B = Suspected Minor Injury

C = Possible Injury

O = No Injury

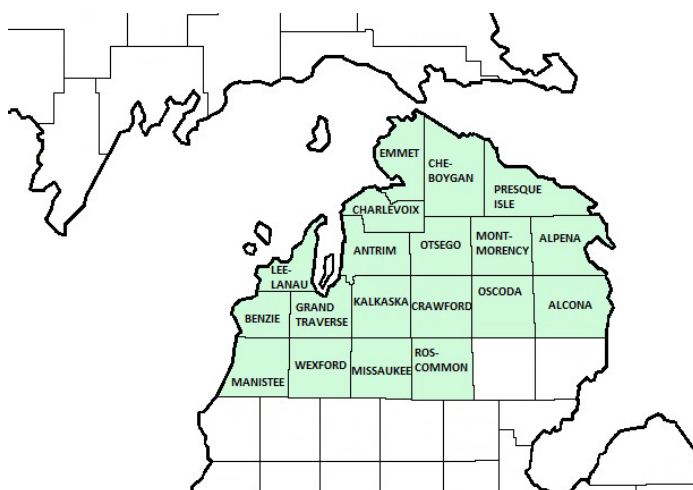
Property Damage Only (PDO)



## Michigan State Police (MSP) District 7 - Northern Lower Peninsula

### 2021 Traffic Crash Data & 2017-2021 5-Year Trends

Beginning in 2011, District 7 is comprised of Alcona, Alpena, Antrim, Benzie, Charlevoix, Cheboygan, Crawford, Emmet, Grand Traverse, Kalkaska, Leelanau, Manistee, Missaukee, Montmorency, Oscoda, Otsego, Presque Isle, Roscommon and Wexford counties. Trend tables for this report are based on those counties.



### Sources:

The crashes in this report occurred on public roadways in Michigan and resulted in injuries, fatalities, or property damage (with \$1,000 as a reporting threshold). The information was gathered from Michigan Traffic Crash Report Forms (UD-10) submitted by local police departments, sheriff's offices, and the Michigan State Police. Other related information was obtained from the departments of Transportation, State, and Community Health.

## MSP District 7 - Northern Lower Peninsula

- There were 16,494 crashes in District 7 during 2021. [Page 1]
- A total of 61 fatalities resulted from 58 fatal crashes in 2021 in District 7. [Page 1]
- There were 2,957 injuries and 2,182 injury crashes. [Page 1]
- There were 14,254 property damage only crashes (no fatalities or injuries). [Page 1]
- November had the highest number of crashes (2,201). [Pages 1-2]
- August had the highest number of fatal crashes (14) and fatalities (14). [Pages 1-2]
- July had the highest number of injury crashes (257) and injuries (369). [Page 1]
- November had the highest number of property damage only crashes (1,954). [Page 1]
- Of all vehicles involved in fatal crashes, 12 (14.6%) were motorcycles. [Page 1]
- Friday was the day of the week with the highest number of crashes (2,710) and Saturday had the highest number of fatal crashes (11). [Pages 2-3]
- The 3:00 PM – 5:59 PM time period had the highest number of crashes (2,926). The Noon – 2:59 PM time period had the highest number of fatal crashes (11). [Pages 5-6]
- During the period from 2017 to 2021, the highest number of deer crashes occurred in 2018 (8,090). The 6:00 AM – 8:59 AM time period had the highest number of deer-involved crashes. There was one fatal crash involving deer in 2021. [Page 7]
- Grand Traverse County (19.9%) had the highest number of crashes in District 7 in 2021, followed by Wexford County (7.7%), and Emmet County (7.5%). [Page 11]
- Grand Traverse County (26.2%) had the highest number of fatalities in District 7 in 2021, followed by Roscommon County (13.1%), and Wexford County (11.5%). [Page 11]
- The highest number of drivers in crashes (25,112) occurred during 2017 and the highest number of drivers coded drinking in crashes (668) occurred during 2017 within the five year period between 2017 and 2021. [Page 12]
- A total of 577 crashes involved alcohol in 2021. [Page 13]
- Alcohol-involved fatal crashes were the highest in 2020 during the five-year period from 2017 to 2021 at 22. [Page 13]
- A total of 195 crashes, 19 fatal crashes, and 18 suspected injury crashes involved drugs in 2021. [Page 14]
- There were 20,504 drivers wearing seatbelts and 201 drivers not wearing seatbelts in crashes in 2021. Of the 201 drivers not wearing seatbelts, 13 (6.5%) were killed and 89 (44.3%) were injured. [Pages 17-19]
- The most common hazardous action coded for drivers in 2021 in all crashes was speed too fast (1,987), while the most common hazardous action coded for drivers in fatal crashes was speed too fast (25). [Page 20]

## 2021 - Crashes and Injury by Month

Month	Crashes				People	
	Total	Fatal	Injury	Property Damage Only (PDO)	Fatalities	Injuries
January	1,220	1	114	1,105	1	145
February	1,168	0	133	1,035	0	170
March	944	6	123	815	7	172
April	849	3	117	729	3	156
May	1,087	3	168	916	3	222
June	1,431	6	204	1,221	7	310
July	1,404	4	257	1,143	4	369
August	1,264	14	209	1,041	14	292
September	1,414	5	207	1,202	5	273
October	1,785	6	227	1,552	6	311
November	2,201	7	240	1,954	8	301
December	1,727	3	183	1,541	3	236
<b>Total</b>	<b>16,494</b>	<b>58</b>	<b>2,182</b>	<b>14,254</b>	<b>61</b>	<b>2,957</b>

## 2021 - Driver Statistics

Age Group	MSP District 7 - Northern Lower Peninsula			Driver Rates	
	2019 Population*	Licensed Drivers	Drivers in Crashes	Per 10k Population	Per 10k Licensed
0 - 15	75,713	2,060	46	6.1	223.3
16 - 20	23,722	19,475	2,356	993.2	1,209.8
21 - 24	18,268	17,638	1,755	960.7	995.0
25 - 64	230,188	220,509	13,976	607.2	633.8
65 +	115,914	121,085	3,545	305.8	292.8
Unknown	0	0	789	--	--
<b>Total</b>	<b>463,805</b>	<b>380,767</b>	<b>22,467</b>	<b>484.4</b>	<b>590.0</b>

\*2021 Population of Michigan Counties (by single-year of age) not yet available from U.S. Census Bureau.

## 2021 - Vehicles in Crashes

Vehicle Type	Motor Vehicles		Fatal Crashes		Injury Crashes	PDO Crashes
	Number of Vehicles	% of Total	Number	% of Total	Number	Number
Passenger Car, SUV, Van	16,118	71.7	43	52.4	2,396	13,679
Motor Home	93	0.4	0	0.0	14	79
Pickup Truck	4,876	21.7	11	13.4	694	4,171
Small Truck Under 10,000 lbs. GVWR	132	0.6	1	1.2	11	120
Motorcycle	182	0.8	12	14.6	142	28
Moped/Goped	17	0.1	0	0.0	14	3
Go-Cart/Golf Cart	2	0.0	0	0.0	1	1
Snowmobile	37	0.2	1	1.2	21	15
Off-Road Vehicle (ORV)/All-Terrain Vehicle (ATV)	84	0.4	2	2.4	59	23
Other (non-registered farm equipment, construction equipment, snow plows, etc.)	76	0.3	1	1.2	9	66
Truck/Bus (over 10,000 lbs. GVWR/8+ occupants/hazmat placard)	589	2.6	10	12.2	96	483
Uncoded & Errors	261	1.2	1	1.2	10	250
<b>Total</b>	<b>22,467</b>	<b>100.0</b>	<b>82</b>	<b>100.0</b>	<b>3,467</b>	<b>18,918</b>

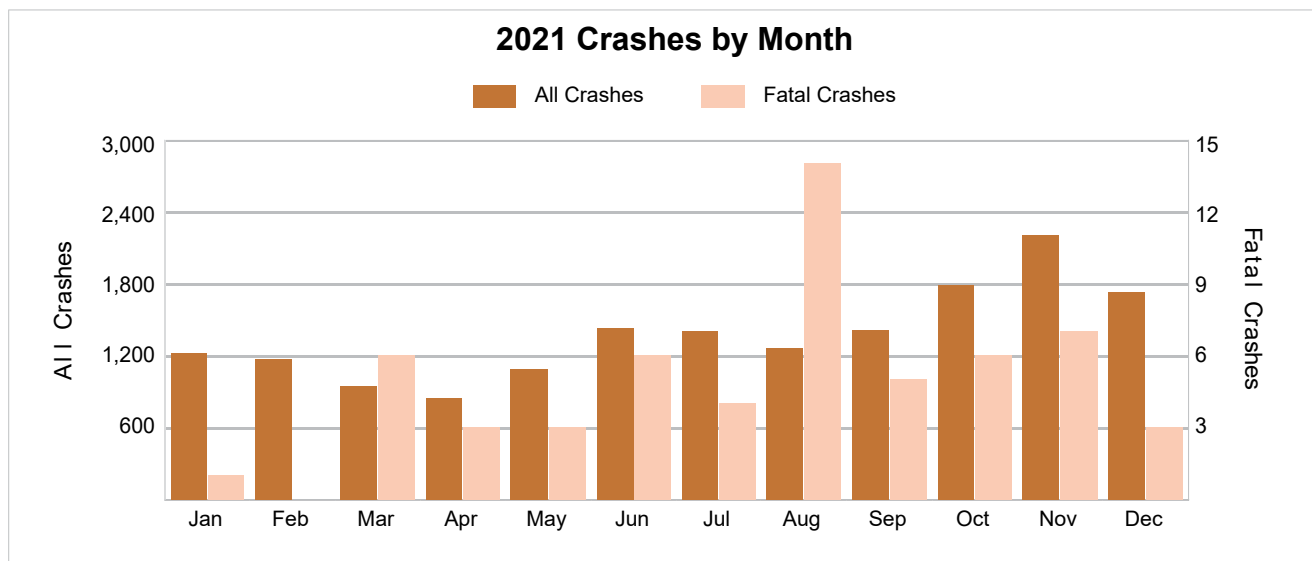
## 5-Year Trend - Crashes by Month

Month	2017		2018		2019		2020		2021	
	Total Crashes	Fatal Crashes	Total Crashes	Fatal Crashes	Total Crashes	Fatal Crashes	Total Crashes	Fatal Crashes	Total Crashes	Fatal Crashes
January	1,647	3	1,711	1	1,844	5	1,529	2	1,220	1
February	1,395	2	1,392	1	1,431	2	1,342	3	1,168	0
March	1,204	3	1,373	4	1,371	0	863	2	944	6
April	859	3	1,333	3	1,125	2	488	4	849	3
May	1,198	3	1,166	5	1,104	4	759	5	1,087	3
June	1,390	5	1,496	4	1,473	8	1,315	10	1,431	6
July	1,425	8	1,462	4	1,431	7	1,262	7	1,404	4
August	1,364	4	1,301	3	1,298	4	1,144	6	1,264	14
September	1,486	8	1,209	5	1,197	6	1,187	5	1,414	5
October	1,877	4	1,661	6	1,674	5	1,686	4	1,785	6
November	2,202	4	2,366	6	2,277	5	1,798	6	2,201	7
December	2,349	4	1,962	3	1,962	7	1,340	3	1,727	3
<b>Total</b>	<b>18,396</b>	<b>51</b>	<b>18,432</b>	<b>45</b>	<b>18,187</b>	<b>55</b>	<b>14,713</b>	<b>57</b>	<b>16,494</b>	<b>58</b>

## 5-Year Trend - Crashes by Day of Week

Day	2017		2018		2019		2020		2021	
	Total Crashes	Fatal Crashes	Total Crashes	Fatal Crashes	Total Crashes	Fatal Crashes	Total Crashes	Fatal Crashes	Total Crashes	Fatal Crashes
Monday	2,533	5	2,657	9	2,586	7	2,094	8	2,442	6
Tuesday	2,644	5	2,868	7	2,638	7	2,208	7	2,407	10
Wednesday	2,718	4	2,616	5	2,900	3	2,138	8	2,375	6
Thursday	2,844	9	2,759	3	2,785	6	2,296	3	2,492	8
Friday	3,028 †	5	3,135 †	7	3,013 †	10	2,337 †	10	2,710 †	9
Saturday	2,506	15	2,367	9	2,291	13	1,978	14	2,224	11
Sunday	2,123	8	2,030	5	1,974	9	1,662	7	1,844	8
<b>Total</b>	<b>18,396</b>	<b>51</b>	<b>18,432</b>	<b>45</b>	<b>18,187</b>	<b>55</b>	<b>14,713</b>	<b>57</b>	<b>16,494</b>	<b>58</b>

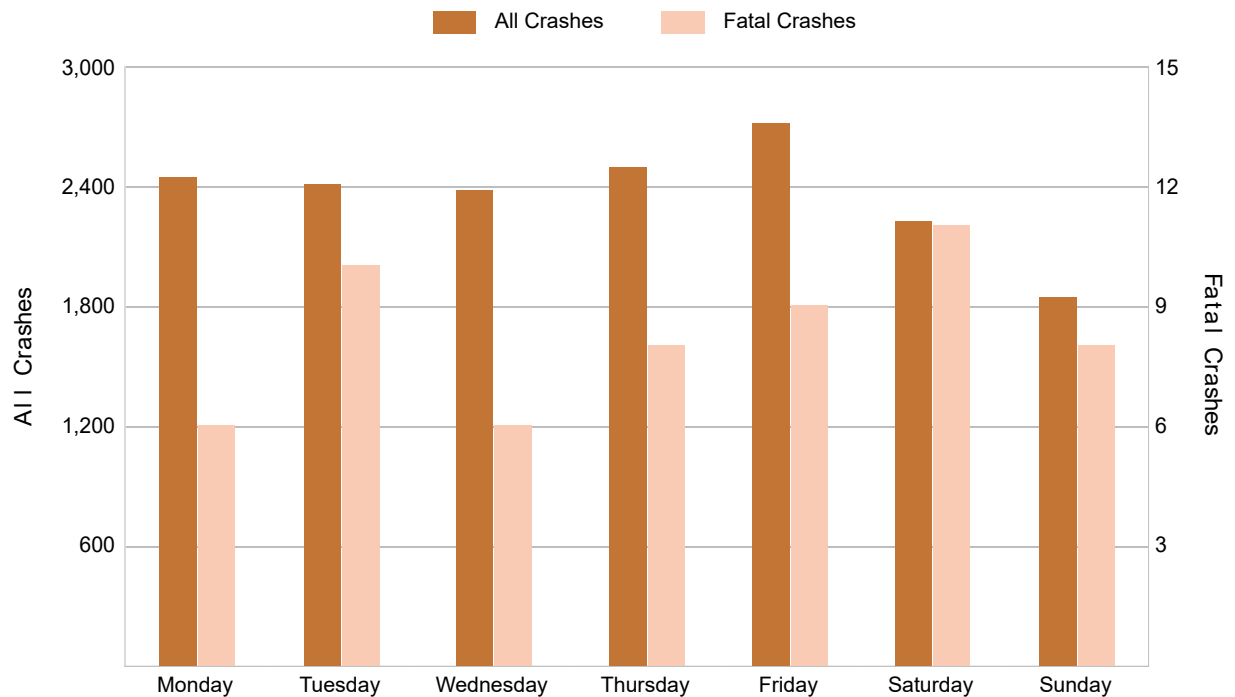
Note: † Indicates that the highest number of total crashes reported in the 5-year period occurred on the same day of the week.



## 2021 - Crashes by Day of Week

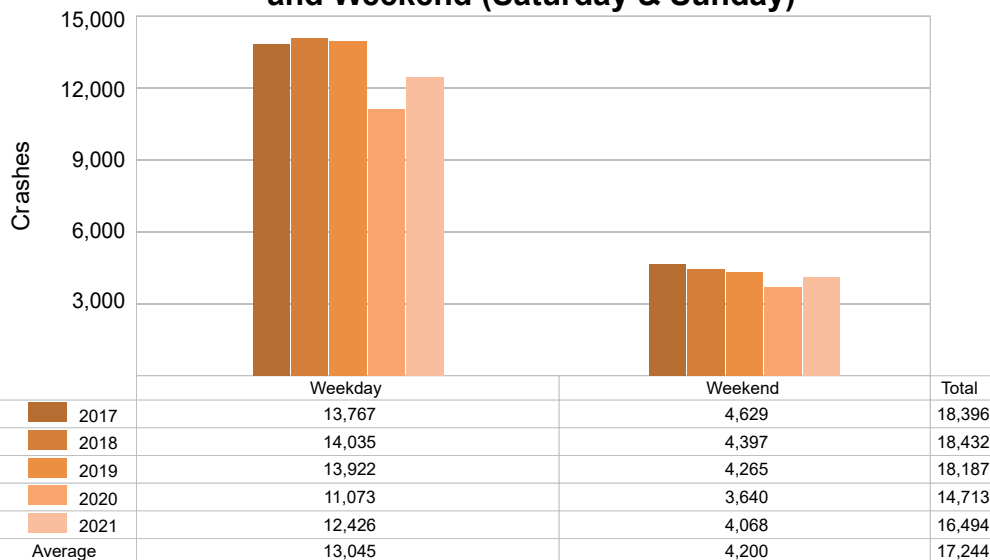
Day	All Crashes		Fatal Crashes		Injury Crashes			PDO Crashes
	Number	% of Total	Fatal	% of Fatal	A	B	C	Number
Monday	2,442	14.8	6	10.3	39	96	180	2,121
Tuesday	2,407	14.6	10	17.2	38	104	138	2,117
Wednesday	2,375	14.4	6	10.3	34	104	154	2,077
Thursday	2,492	15.1	8	13.8	34	105	175	2,170
Friday	2,710	16.4	9	15.5	44	103	210	2,344
Saturday	2,224	13.5	11	19.0	62	103	171	1,877
Sunday	1,844	11.2	8	13.8	53	94	141	1,548
<b>Total</b>	<b>16,494</b>	<b>100.0</b>	<b>58</b>	<b>100.0</b>	<b>304</b>	<b>709</b>	<b>1,169</b>	<b>14,254</b>

## 2021 Day of Week and Severity



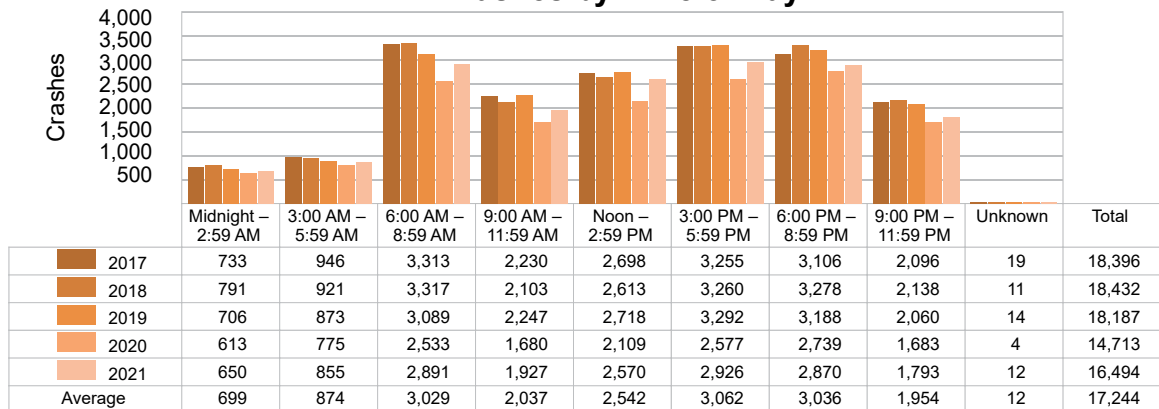
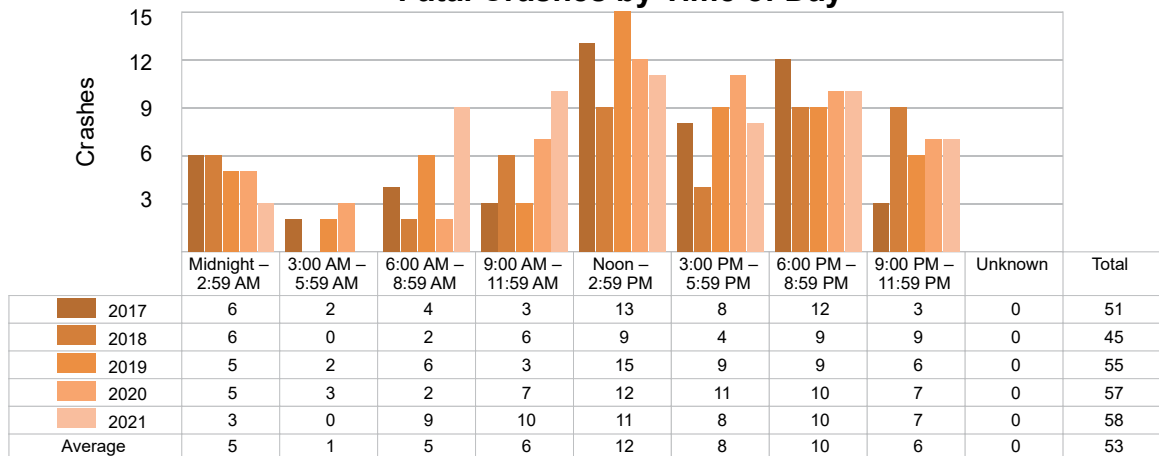
## 5-Year Trend - Crashes by Weekday and Weekend

Portion of Week	2017		2018		2019		2020		2021	
	Total Crashes	Fatal Crashes	Total Crashes	Fatal Crashes	Total Crashes	Fatal Crashes	Total Crashes	Fatal Crashes	Total Crashes	Fatal Crashes
Weekday	13,767	28	14,035	31	13,922	33	11,073	36	12,426	39
Weekend	4,629	23	4,397	14	4,265	22	3,640	21	4,068	19
<b>Total</b>	<b>18,396</b>	<b>51</b>	<b>18,432</b>	<b>45</b>	<b>18,187</b>	<b>55</b>	<b>14,713</b>	<b>57</b>	<b>16,494</b>	<b>58</b>

5-Year Crash Trends by Weekday (Monday - Friday)  
and Weekend (Saturday & Sunday)

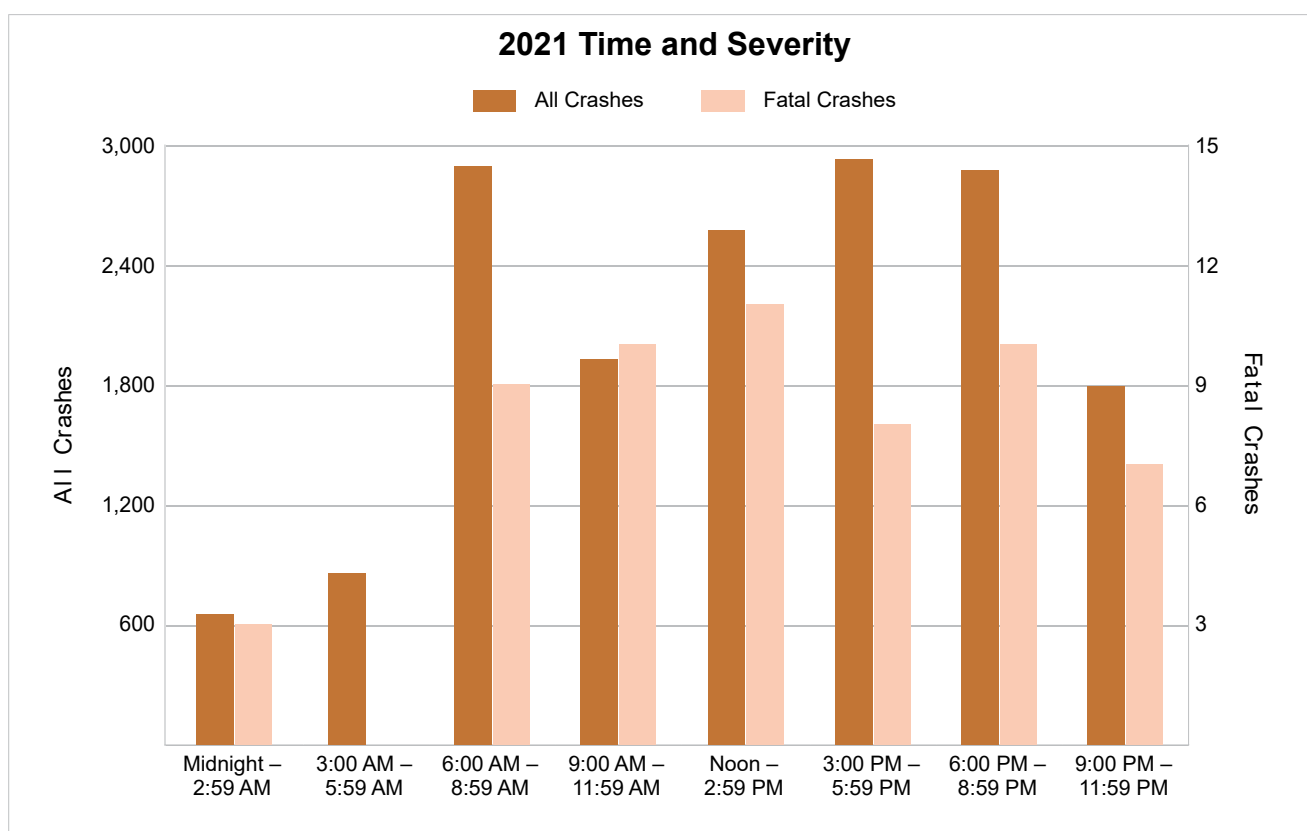
## 5-Year Trend - Crashes by Time of Day

Time of Day	2017		2018		2019		2020		2021	
	Total Crashes	Fatal Crashes	Total Crashes	Fatal Crashes	Total Crashes	Fatal Crashes	Total Crashes	Fatal Crashes	Total Crashes	Fatal Crashes
Midnight – 2:59 AM	733	6	791	6	706	5	613	5	650	3
3:00 AM – 5:59 AM	946	2	921	0	873	2	775	3	855	0
6:00 AM – 8:59 AM	3,313	4	3,317	2	3,089	6	2,533	2	2,891	9
9:00 AM – 11:59 AM	2,230	3	2,103	6	2,247	3	1,680	7	1,927	10
Noon – 2:59 PM	2,698	13	2,613	9	2,718	15	2,109	12	2,570	11
3:00 PM – 5:59 PM	3,255	8	3,260	4	3,292	9	2,577	11	2,926	8
6:00 PM – 8:59 PM	3,106	12	3,278	9	3,188	9	2,739	10	2,870	10
9:00 PM – 11:59 PM	2,096	3	2,138	9	2,060	6	1,683	7	1,793	7
Unknown	19	0	11	0	14	0	4	0	12	0
<b>Total</b>	<b>18,396</b>	<b>51</b>	<b>18,432</b>	<b>45</b>	<b>18,187</b>	<b>55</b>	<b>14,713</b>	<b>57</b>	<b>16,494</b>	<b>58</b>

5-Year Trend  
Crashes by Time of Day5-Year Trend  
Fatal Crashes by Time of Day

## 2021 - Time and Severity

Time of Day	All Crashes		Fatal Crashes		Injury Crashes			PDO Crashes
	Number	% of Total	Number	% of Fatal	A	B	C	Number
Midnight – 2:59 AM	650	3.9	3	5.2	19	37	39	552
3:00 AM – 5:59 AM	855	5.2	0	0.0	9	24	42	780
6:00 AM – 8:59 AM	2,891	17.5	9	15.5	20	57	116	2,689
9:00 AM – 11:59 AM	1,927	11.7	10	17.2	31	95	165	1,626
Noon – 2:59 PM	2,570	15.6	11	19.0	62	150	267	2,080
3:00 PM – 5:59 PM	2,926	17.7	8	13.8	67	169	278	2,404
6:00 PM – 8:59 PM	2,870	17.4	10	17.2	68	98	156	2,538
9:00 PM – 11:59 PM	1,793	10.9	7	12.1	28	79	106	1,573
Unknown	12	0.1	0	0.0	0	0	0	12
<b>Total</b>	<b>16,494</b>	<b>100.0</b>	<b>58</b>	<b>100.0</b>	<b>304</b>	<b>709</b>	<b>1,169</b>	<b>14,254</b>

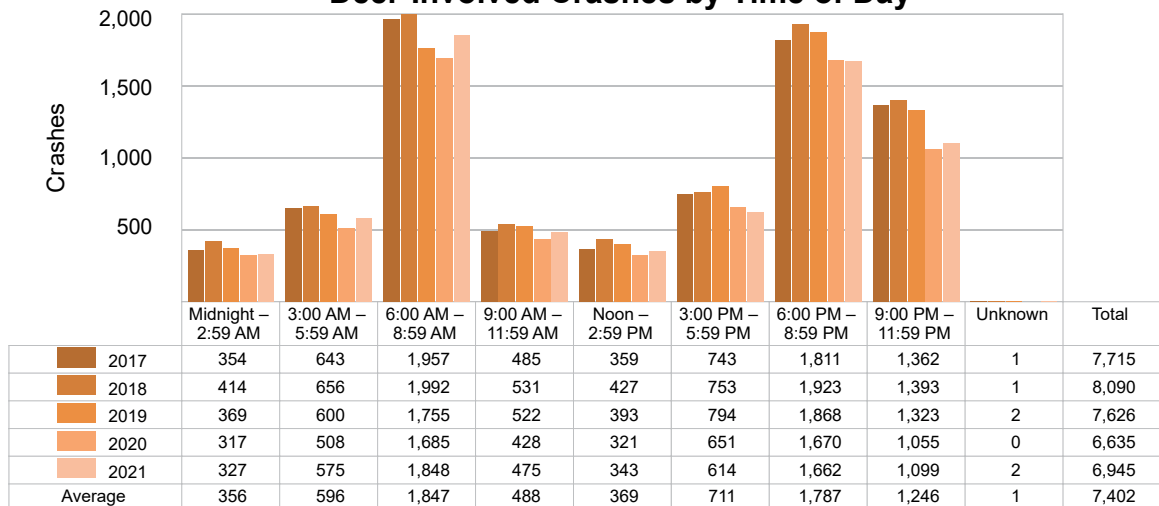




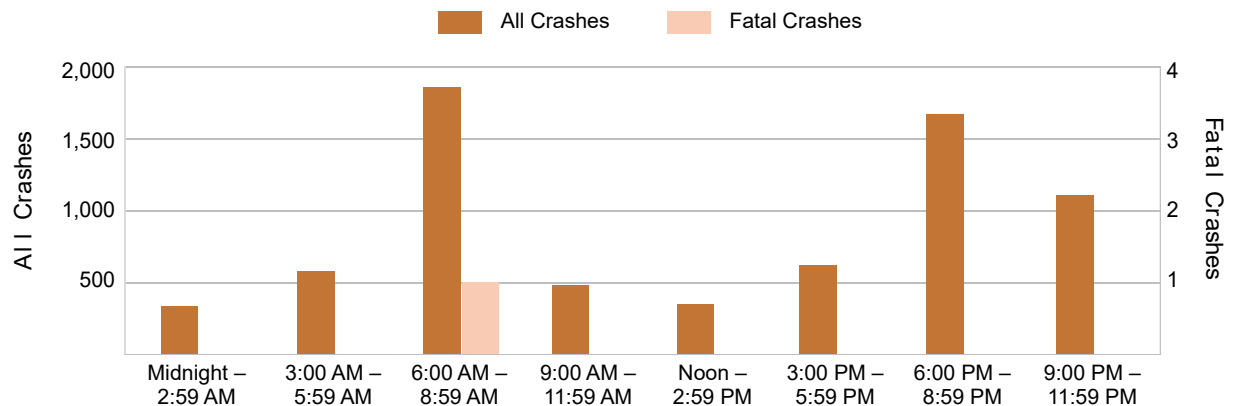
## 5-Year Trend - Deer-Involved Crashes by Time of Day

Time of Day	2017		2018		2019		2020		2021	
	Total Crashes	Fatal Crashes	Total Crashes	Fatal Crashes	Total Crashes	Fatal Crashes	Total Crashes	Fatal Crashes	Total Crashes	Fatal Crashes
Midnight – 2:59 AM	354	0	414	0	369	0	317	0	327	0
3:00 AM – 5:59 AM	643	0	656	0	600	0	508	1	575	0
6:00 AM – 8:59 AM	1,957	0	1,992	0	1,755	0	1,685	0	1,848	1
9:00 AM – 11:59 AM	485	0	531	0	522	0	428	0	475	0
Noon – 2:59 PM	359	0	427	0	393	1	321	0	343	0
3:00 PM – 5:59 PM	743	0	753	0	794	0	651	0	614	0
6:00 PM – 8:59 PM	1,811	1	1,923	2	1,868	0	1,670	0	1,662	0
9:00 PM – 11:59 PM	1,362	1	1,393	1	1,323	0	1,055	0	1,099	0
Unknown	1	0	1	0	2	0	0	0	2	0
<b>Total</b>	<b>7,715</b>	<b>2</b>	<b>8,090</b>	<b>3</b>	<b>7,626</b>	<b>1</b>	<b>6,635</b>	<b>1</b>	<b>6,945</b>	<b>1</b>

### 5-Year Trend Deer-Involved Crashes by Time of Day

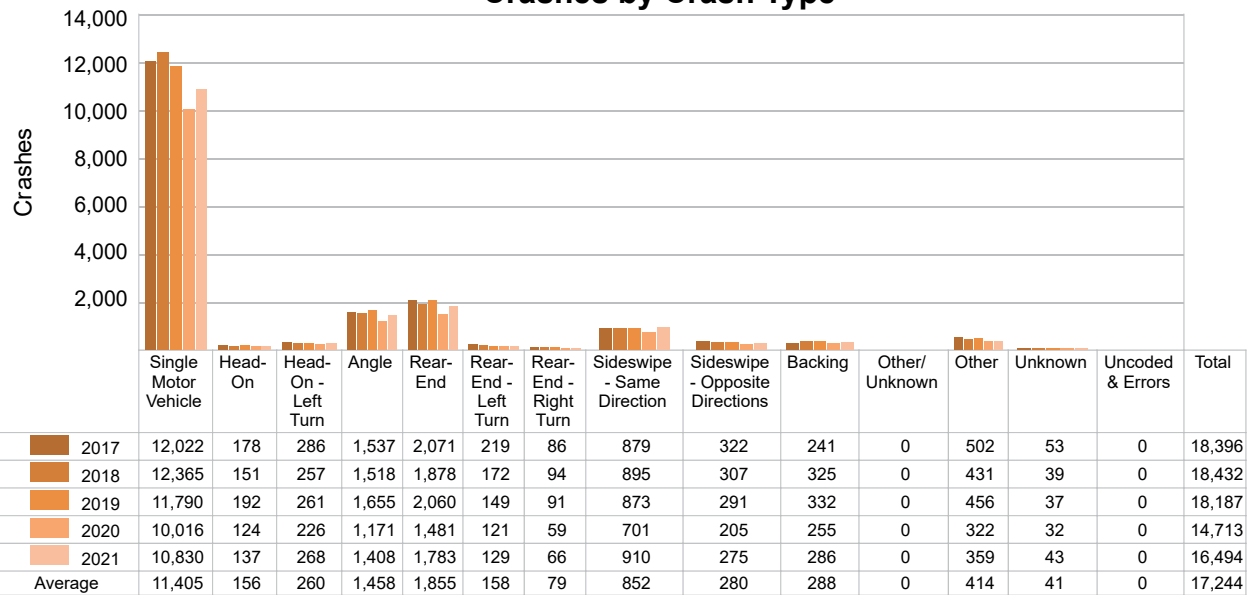


### 2021 Time and Severity of Deer-Involved Crashes



## 5-Year Trend - Crashes by Crash Type

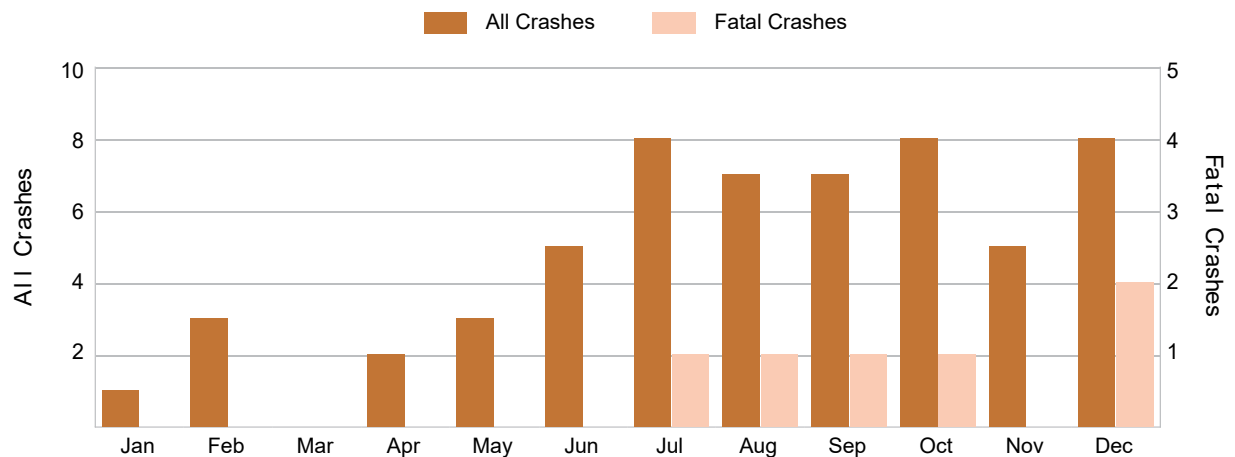
Crash Type	2017		2018		2019		2020		2021	
	Total Crashes	Fatal Crashes	Total Crashes	Fatal Crashes	Total Crashes	Fatal Crashes	Total Crashes	Fatal Crashes	Total Crashes	Fatal Crashes
Single Motor Vehicle	12,022	27	12,365	25	11,790	23	10,016	38	10,830	34
Head-On	178	8	151	6	192	10	124	7	137	9
Head-On - Left Turn	286	2	257	1	261	3	226	2	268	1
Angle	1,537	7	1,518	6	1,655	11	1,171	5	1,408	8
Rear-End	2,071	2	1,878	2	2,060	4	1,481	1	1,783	1
Rear-End - Left Turn	219	1	172	0	149	1	121	0	129	2
Rear-End - Right Turn	86	0	94	0	91	0	59	0	66	0
Sideswipe - Same Direction	879	1	895	0	873	1	701	1	910	1
Sideswipe - Opposite Directions	322	0	307	1	291	0	205	3	275	1
Backing	241	0	325	0	332	0	255	0	286	0
Other/Unknown	0	0	0	0	0	0	0	0	0	0
Other	502	3	431	4	456	2	322	0	359	0
Unknown	53	0	39	0	37	0	32	0	43	1
Uncoded & Errors	0	0	0	0	0	0	0	0	0	0
<b>Total</b>	<b>18,396</b>	<b>51</b>	<b>18,432</b>	<b>45</b>	<b>18,187</b>	<b>55</b>	<b>14,713</b>	<b>57</b>	<b>16,494</b>	<b>58</b>

5-Year Trend  
Crashes by Crash Type

## 5-Year Trend - Pedestrian-Involved Crashes by Month

Month	2017		2018		2019		2020		2021	
	Total Crashes	Fatal Crashes	Total Crashes	Fatal Crashes	Total Crashes	Fatal Crashes	Total Crashes	Fatal Crashes	Total Crashes	Fatal Crashes
January	5	0	5	0	3	1	3	0	1	0
February	3	0	3	0	2	0	4	0	3	0
March	4	0	6	0	2	0	3	1	0	0
April	3	0	4	0	5	0	0	0	2	0
May	5	0	3	0	4	0	1	0	3	0
June	6	0	4	0	10	2	4	1	5	0
July	10	0	7	0	4	1	7	0	8	1
August	8	1	8	1	3	0	5	1	7	1
September	7	1	7	1	4	0	5	0	7	1
October	4	0	4	0	6	0	6	1	8	1
November	6	0	4	0	4	1	3	1	5	0
December	6	1	6	0	8	0	1	0	8	2
<b>Total</b>	<b>67</b>	<b>3</b>	<b>61</b>	<b>2</b>	<b>55</b>	<b>5</b>	<b>42</b>	<b>5</b>	<b>57</b>	<b>6</b>

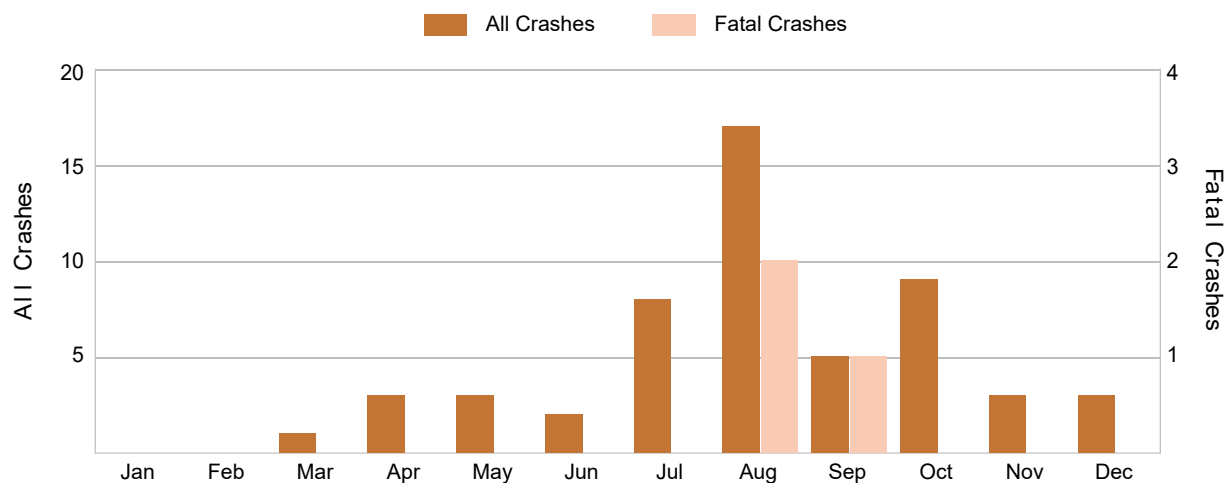
## 2021 Pedestrian-Involved Crashes by Month



## 5-Year Trend - Bicyclist-Involved Crashes by Month

Month	2017		2018		2019		2020		2021	
	Total Crashes	Fatal Crashes	Total Crashes	Fatal Crashes	Total Crashes	Fatal Crashes	Total Crashes	Fatal Crashes	Total Crashes	Fatal Crashes
January	0	0	0	0	0	0	0	0	0	0
February	0	0	2	0	1	0	0	0	0	0
March	0	0	1	0	0	0	0	0	1	0
April	4	0	1	0	4	0	1	0	3	0
May	4	0	11	0	8	0	2	0	3	0
June	11	0	9	0	11	0	5	0	2	0
July	11	0	20	0	9	0	6	0	8	0
August	9	0	13	0	17	0	10	0	17	2
September	8	1	6	0	4	0	7	0	5	1
October	7	0	3	0	7	0	1	0	9	0
November	0	0	0	0	0	0	1	0	3	0
December	2	0	1	0	0	0	2	0	3	0
<b>Total</b>	<b>56</b>	<b>1</b>	<b>67</b>	<b>0</b>	<b>61</b>	<b>0</b>	<b>35</b>	<b>0</b>	<b>54</b>	<b>3</b>

## 2021 Bicyclist-Involved Crashes by Month



## 2021 - Reported Motor Vehicle Crashes by County

County	Crashes												
	Total	Fatal	Injury	Property Damage	Inter-State	US Route	State Route	Local Street	Alcohol-Involved	Drug-Involved	Deer-Involved	Pedestrian-Involved	Bicyclist-Involved
Alcona	496	0	43	453	0	78	120	298	10	3	340	0	0
Alpena	820	1	167	652	0	199	210	406	30	12	291	6	9
Antrim	805	2	90	713	0	199	166	428	21	6	421	3	2
Benzie	566	0	79	487	0	136	112	316	33	8	243	0	0
Charlevoix	962	4	90	868	0	235	170	552	30	13	508	6	2
Cheboygan	1,051	3	113	935	207	69	238	537	32	10	563	0	3
Crawford	561	0	85	476	159	18	140	242	25	13	278	0	0
Emmet	1,237	3	161	1,073	10	432	118	669	47	22	419	0	2
Grand Traverse	3,275	15	460	2,800	0	910	426	1,931	119	45	642	15	20
Kalkaska	681	2	112	567	0	156	153	371	25	11	295	3	3
Leelanau	588	1	73	514	0	0	275	313	31	7	289	3	1
Manistee	915	3	105	807	0	249	160	506	31	6	516	3	4
Missaukee	602	1	55	546	0	0	208	394	18	2	380	2	0
Montmorency	341	0	40	301	0	0	153	187	16	2	205	0	0
Oscoda	209	2	28	179	0	0	118	90	8	0	113	0	0
Otsego	863	4	126	733	195	0	264	395	29	8	305	5	2
Presque Isle	549	3	34	512	0	108	172	269	16	6	418	2	0
Roscommon	696	7	125	564	97	98	209	290	25	11	290	0	4
Wexford	1,277	7	196	1,074	0	396	366	506	31	10	429	9	2
<b>Total</b>	<b>16,494</b>	<b>58</b>	<b>2,182</b>	<b>14,254</b>	<b>668</b>	<b>3,283</b>	<b>3,778</b>	<b>8,700</b>	<b>577</b>	<b>195</b>	<b>6,945</b>	<b>57</b>	<b>54</b>

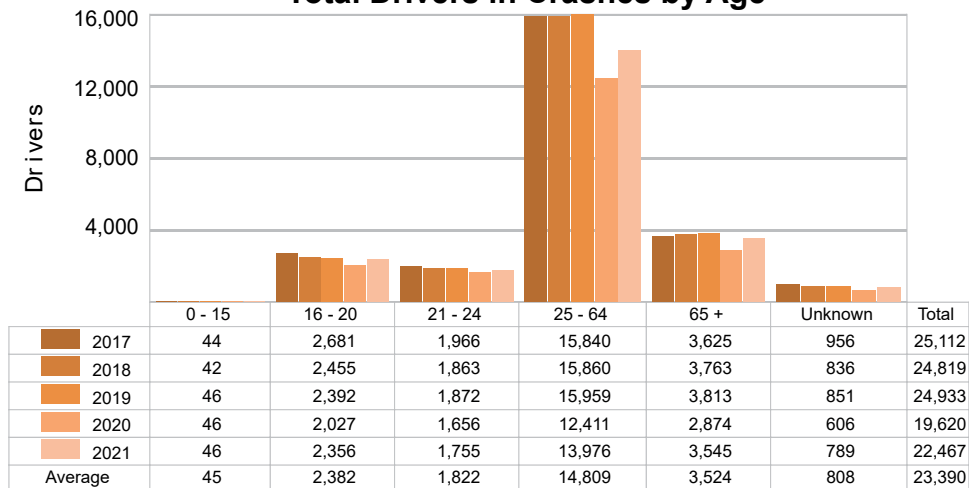
## 2021 - People in Reported Motor Vehicle Crashes by County

County	People					
	Fatalities	Suspected Serious Injuries	Suspected Minor Injuries	Possible Injuries	No Injuries	Uncoded & Errors
Alcona	0	17	33	29	561	2
Alpena	1	34	122	227	1,188	52
Antrim	2	25	69	76	962	44
Benzie	0	12	82	83	705	25
Charlevoix	4	24	82	80	1,204	41
Cheboygan	3	23	91	94	1,229	16
Crawford	0	42	63	67	762	26
Emmet	3	47	95	222	1,714	54
Grand Traverse	16	85	315	670	4,960	249
Kalkaska	2	48	66	128	894	19
Leelanau	1	30	58	85	694	32
Manistee	3	41	43	113	1,148	63
Missaukee	1	25	52	36	713	12
Montmorency	0	18	16	45	423	2
Oscoda	2	5	37	27	270	4
Otsego	5	42	87	162	1,289	19
Presque Isle	3	10	17	39	669	8
Roscommon	8	56	85	150	969	28
Wexford	7	68	132	245	1,811	107
<b>Total</b>	<b>61</b>	<b>652</b>	<b>1,545</b>	<b>2,578</b>	<b>22,165</b>	<b>803</b>

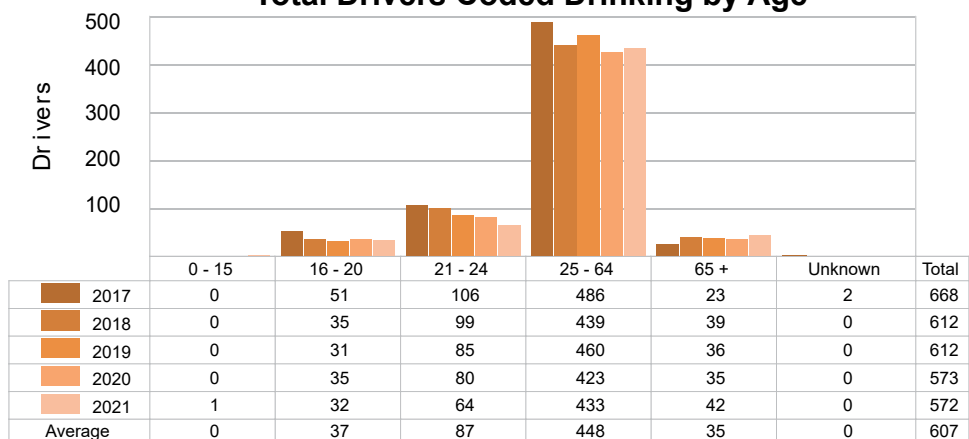
## 5-Year Trend - Drivers in Crashes Coded Drinking by Driver Age

Driver Age	2017		2018		2019		2020		2021	
	Total Drivers in Crashes	Total Drivers Coded Drinking	Total Drivers in Crashes	Total Drivers Coded Drinking	Total Drivers in Crashes	Total Drivers Coded Drinking	Total Drivers in Crashes	Total Drivers Coded Drinking	Total Drivers in Crashes	Total Drivers Coded Drinking
0 - 15	44	0	42	0	46	0	46	0	46	1
16 - 20	2,681	51	2,455	35	2,392	31	2,027	35	2,356	32
21 - 24	1,966	106	1,863	99	1,872	85	1,656	80	1,755	64
25 - 64	15,840	486	15,860	439	15,959	460	12,411	423	13,976	433
65 +	3,625	23	3,763	39	3,813	36	2,874	35	3,545	42
Unknown	956	2	836	0	851	0	606	0	789	0
<b>Total</b>	<b>25,112</b>	<b>668</b>	<b>24,819</b>	<b>612</b>	<b>24,933</b>	<b>612</b>	<b>19,620</b>	<b>573</b>	<b>22,467</b>	<b>572</b>

### 5-Year Trend Total Drivers in Crashes by Age



### 5-Year Trend Total Drivers Coded Drinking by Age



**2021 - Bodily Alcohol Concentration (BAC) Results Among All Vehicle Drivers in Alcohol-Involved Crashes by Age**

Age Group	Drivers				BAC Result Range for Drivers Coded Drinking				
	Total Drivers in Alcohol-Involved Crashes	Total Drivers Tested in all Crashes	Total Drivers Coded Drinking, Tested	Total Drivers Coded Drinking	BAC = 0.00	BAC 0.01 g/dL to 0.07 g/dL	BAC 0.08 g/dL to 0.16 g/dL	BAC 0.17 g/dL and Above	BAC Not Reported
0 - 15	2	2	1	1	0	0	1	0	0
16 - 20	45	56	25	32	0	9	9	2	12
21 - 24	78	66	50	64	0	5	19	13	27
25 - 64	507	494	342	433	0	40	100	136	157
65 +	57	56	37	42	0	2	15	10	15
Unknown	20	1	0	0	0	0	0	0	0
<b>Total</b>	<b>709</b>	<b>675</b>	<b>455</b>	<b>572</b>	<b>0</b>	<b>56</b>	<b>144</b>	<b>161</b>	<b>211</b>

Notes: BAC measured in grams (g) per deciliter (dL).

BAC may not be reported if drivers are not tested or if the results are not available immediately (as in the case of a blood test).

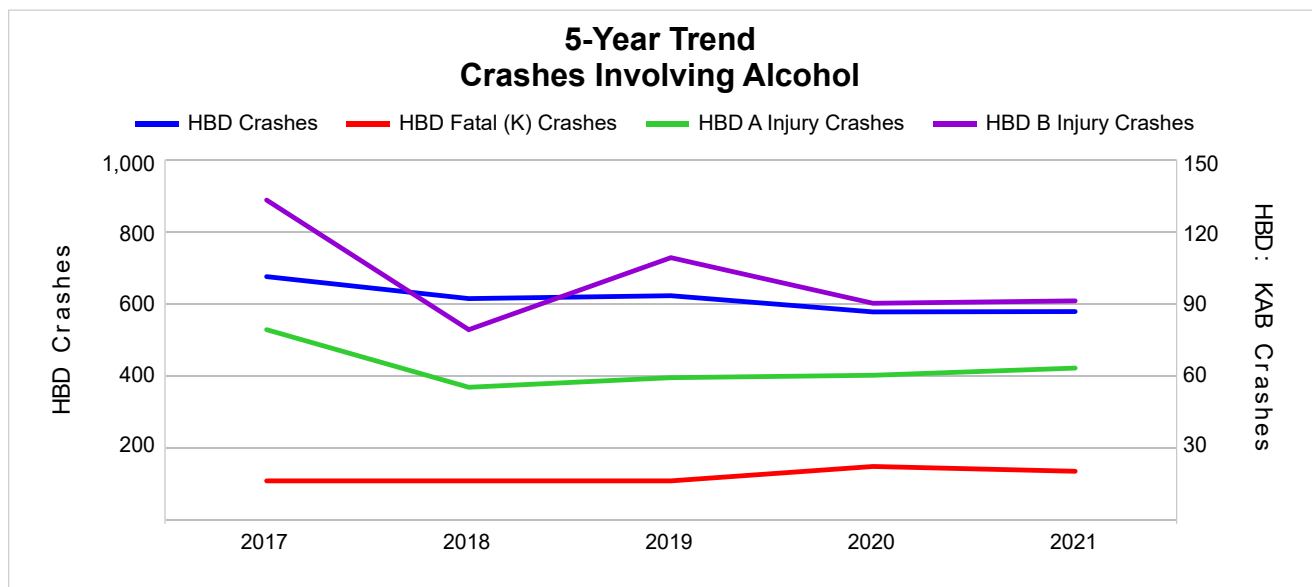
A driver may be coded by the officer as drinking even though no test is administered.

**5-Year Trend - Crashes Involving Alcohol**

Year	All Crashes	HBD Crashes	% HBD	Fatal Crashes	HBD Fatal Crashes	% HBD	A Injury Crashes	HBD A Injury Crashes	% HBD	B Injury Crashes	HBD B Injury Crashes	% HBD
2017	18,396	674	3.7	51	16	31.4	348	79	22.7	807	133	16.5
2018	18,432	613	3.3	45	16	35.6	318	55	17.3	743	79	10.6
2019	18,187	621	3.4	55	16	29.1	291	59	20.3	702	109	15.5
2020	14,713	576	3.9	57	22	38.6	269	60	22.3	592	90	15.2
2021	16,494	577	3.5	58 **	20	34.5	304	63	20.7	709	91	12.8

Note: \* Indicates that the most recent year is the lowest number or percentage reported in the 5-year period in that column.

\*\* Indicates that the most recent year is the highest number or percentage reported in the 5-year period in that column.



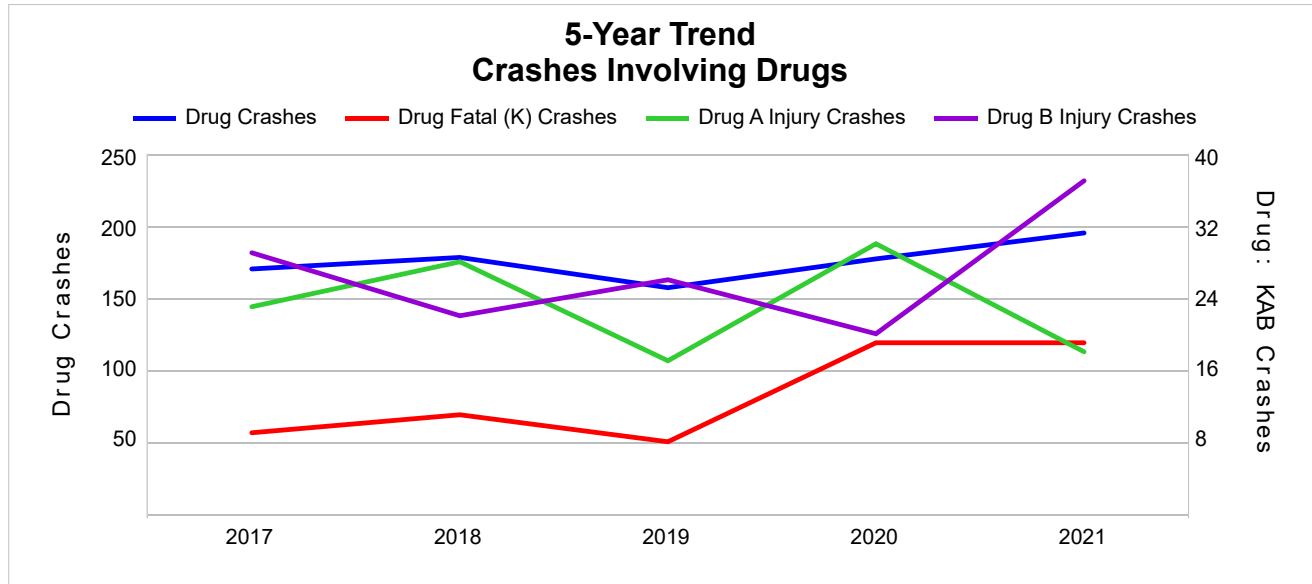
Note: Had-Been-Drinking (HBD)

## 5-Year Trend - Crashes Involving Drugs

Year	All Crashes	Drug Crashes	% Drug	Fatal Crashes	Drug Fatal Crashes	% Drug	A Injury Crashes	Drug A Injury Crashes	% Drug	B Injury Crashes	Drug B Injury Crashes	% Drug
2017	18,396	170	0.9	51	9	17.6	348	23	6.6	807	29	3.6
2018	18,432	178	1.0	45	11	24.4	318	28	8.8	743	22	3.0
2019	18,187	157	0.9	55	8	14.5	291	17	5.8	702	26	3.7
2020	14,713	177	1.2	57	19	33.3	269	30	11.2	592	20	3.4
2021	16,494	195 **	1.2	58 **	19	32.8	304	18	5.9	709	37 **	5.2 **

Note: \* Indicates that the most recent year is the lowest number or percentage reported in the 5-year period in that column.

\*\* Indicates that the most recent year is the highest number or percentage reported in the 5-year period in that column.



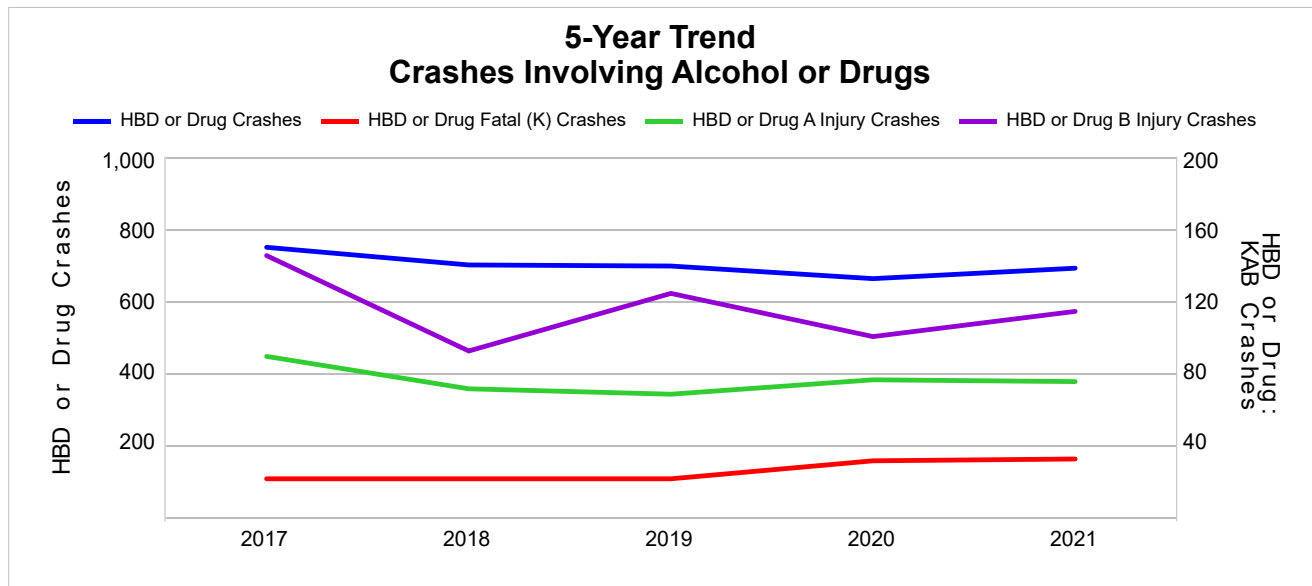


## 5-Year Trend - Crashes Involving Alcohol or Drugs

Year	All Crashes	HBD or Drug Crashes	% HBD or Drug	Fatal Crashes	HBD or Drug Fatal Crashes	% HBD or Drug	A Injury Crashes	HBD or Drug A Injury Crashes	% HBD or Drug	B Injury Crashes	HBD or Drug B Injury Crashes	% HBD or Drug
2017	18,396	748	4.1	51	21	41.2	348	89	25.6	807	145	18.0
2018	18,432	699	3.8	45	21	46.7	318	71	22.3	743	92	12.4
2019	18,187	696	3.8	55	21	38.2	291	68	23.4	702	124	17.7
2020	14,713	661	4.5	57	31	54.4	269	76	28.3	592	100	16.9
2021	16,494	690	4.2	58 **	32 **	55.2 **	304	75	24.7	709	114	16.1

Note: \* Indicates that the most recent year is the lowest number or percentage reported in the 5-year period in that column.

\*\* Indicates that the most recent year is the highest number or percentage reported in the 5-year period in that column.



Note: Had-Been-Drinking (HBD)

## 2021 - Restraints Worn Among Vehicle Drivers and Injured Passengers by Vehicle Type

Vehicle Type	Total Occupants			Fatalities			A - Suspected Serious			B - Suspected Minor			C - Possible Injury			No Injury		
	Total	Used Restraint	%	Total	Used Restraint	%	Total	Used Restraint	%	Total	Used Restraint	%	Total	Used Restraint	%	Total	Used Restraint	%
Passenger Car, SUV, Van	16,647	15,613	93.8	32	14	43.8	202	161	79.7	625	554	88.6	1,210	1,126	93.1	14,208	13,758	96.8
Motor Home	95	88	92.6	0	0	0.0	0	0	0.0	3	3	100.0	7	5	71.4	82	80	97.6
Pickup Truck	5,027	4,647	92.4	3	2	66.7	66	42	63.6	164	131	79.9	289	276	95.5	4,362	4,195	96.2
Small Truck Under 10,000 lbs. GVWR	133	120	90.2	1	0	0.0	1	1	100.0	0	0	0.0	7	7	100.0	118	112	94.9
Motorcycle	195	118	60.5	12	8	66.7	52	31	59.6	66	42	63.6	30	21	70.0	33	16	48.5
Moped/Goped	18	7	38.9	0	0	0.0	3	1	33.3	9	3	33.3	3	1	33.3	2	2	100.0
Go-Cart/Golf Cart	3	0	0.0	0	0	0.0	0	0	0.0	2	0	0.0	0	0	0.0	1	0	0.0
Snowmobile	37	33	89.2	1	1	100.0	10	9	90.0	5	5	100.0	5	4	80.0	16	14	87.5
Off-Road Vehicle (ORV)/All-Terrain Vehicle (ATV)	95	46	48.4	2	0	0.0	29	13	44.8	22	13	59.1	8	5	62.5	32	15	46.9
Other (non-registered farm equipment, construction equipment, snow plows, etc.)	76	53	69.7	0	0	0.0	1	0	0.0	2	1	50.0	0	0	0.0	65	52	80.0
Truck/Bus (over 10,000 lbs. GVWR/8+ occupants/hazmat placard)	599	560	93.5	1	0	0.0	5	3	60.0	14	12	85.7	30	24	80.0	537	521	97.0
Uncoded & Errors	261	0	0.0	0	0	0.0	1	0	0.0	0	0	0.0	0	0	0.0	6	0	0.0
<b>Total</b>	<b>23,186</b>	<b>21,285</b>	<b>91.8</b>	<b>52</b>	<b>25</b>	<b>48.1</b>	<b>370</b>	<b>261</b>	<b>70.5</b>	<b>912</b>	<b>764</b>	<b>83.8</b>	<b>1,589</b>	<b>1,469</b>	<b>92.4</b>	<b>19,462</b>	<b>18,765</b>	<b>96.4</b>

Note: Restraint Use includes shoulder belt only used, lap belt only used, both lap and shoulder belts used, child restraint used, restraint failure, and helmet worn.

## 2021 - Restraints Worn Among Vehicle Drivers and Injured Passengers by Age

Age Group	Total Occupants			Fatalities			A - Suspected Serious			B - Suspected Minor			C - Possible Injury			No Injury		
	Total	Used Restraint	%	Total	Used Restraint	%	Total	Used Restraint	%	Total	Used Restraint	%	Total	Used Restraint	%	Total	Used Restraint	%
0 - 15	175	148	84.6	1	1	100.0	18	14	77.8	43	33	76.7	87	77	88.5	26	23	88.5
16 - 20	2,485	2,377	95.7	6	3	50.0	43	28	65.1	134	110	82.1	205	185	90.2	2,096	2,051	97.9
21 - 24	1,822	1,715	94.1	5	2	40.0	30	18	60.0	95	74	77.9	150	140	93.3	1,538	1,481	96.3
25 - 64	14,275	13,548	94.9	32	13	40.6	225	156	69.3	465	390	83.9	890	816	91.7	12,630	12,172	96.4
65 +	3,640	3,496	96.0	8	6	75.0	53	45	84.9	175	157	89.7	257	251	97.7	3,140	3,037	96.7
Unknown	789	1	0.1	0	0	0.0	1	0	0.0	0	0	0.0	0	0	0.0	32	1	3.1
<b>Total</b>	<b>23,186</b>	<b>21,285</b>	<b>91.8</b>	<b>52</b>	<b>25</b>	<b>48.1</b>	<b>370</b>	<b>261</b>	<b>70.5</b>	<b>912</b>	<b>764</b>	<b>83.8</b>	<b>1,589</b>	<b>1,469</b>	<b>92.4</b>	<b>19,462</b>	<b>18,765</b>	<b>96.4</b>

Note: Restraint Use includes shoulder belt only used, lap belt only used, both lap and shoulder belts used, child restraint used, restraint failure, and helmet worn.

## 5-Year Trend - Restraint Use Among Drivers

Restraint Use	2017			2018			2019			2020			2021		
	Drivers	Fatal Drivers	Injured Drivers	Drivers	Fatal Drivers	Injured Drivers	Drivers	Fatal Drivers	Injured Drivers	Drivers	Fatal Drivers	Injured Drivers	Drivers	Fatal Drivers	Injured Drivers
No Belts Available	77	1	26	37	0	4	42	0	5	44	0	9	49	1	12
Shoulder Belt Only Used	119	0	12	113	0	13	98	0	11	82	0	13	103	0	12
Lap Belt Only Used	50	0	3	42	2	6	30	1	3	23	0	2	36	0	5
Both Lap & Shoulder Belt Used	22,995	21	2,039	22,839	14	1,906	23,009	15	1,829	17,895	13	1,518	20,364	12	1,743
No Belts Used	187	9	77	171	11	79	133	12	56	125	12	73	152	12	77
Child Restraint Used - Forward Facing	4	0	0	3	0	1	1	0	0	0	0	0	0	0	0
Child Restraint Not Used, Unavailable or Improper Use	0	0	0	0	0	0	0	0	0	0	0	0	0	0	0
Child Restraint Used - Rear Facing	1	0	0	0	0	0	0	0	0	0	0	0	0	0	0
Child Restraint Used - Booster Seat	2	0	1	0	0	0	0	0	0	0	0	0	0	0	0
Restraint Failure	8	0	2	6	0	2	8	0	2	6	0	0	1	0	1
Restraint Use Unknown	1,223	1	63	1,208	3	57	1,264	3	61	1,142	8	67	1,466	4	107
Helmet Worn	197	5	139	174	6	133	180	7	129	178	3	139	179	9	135
Helmet Not Worn	78	5	52	64	2	51	67	2	52	80	6	62	88	5	63
Helmet Use Unknown	13	2	5	18	0	8	19	0	8	21	1	16	10	0	6
Uncoded & Errors	158	0	0	144	0	0	82	0	0	24	0	0	19	0	0
<b>Total</b>	<b>25,112</b>	<b>44</b>	<b>2,419</b>	<b>24,819</b>	<b>38</b>	<b>2,260</b>	<b>24,933</b>	<b>40</b>	<b>2,156</b>	<b>19,620</b>	<b>43</b>	<b>1,899</b>	<b>22,467</b>	<b>43</b>	<b>2,161</b>

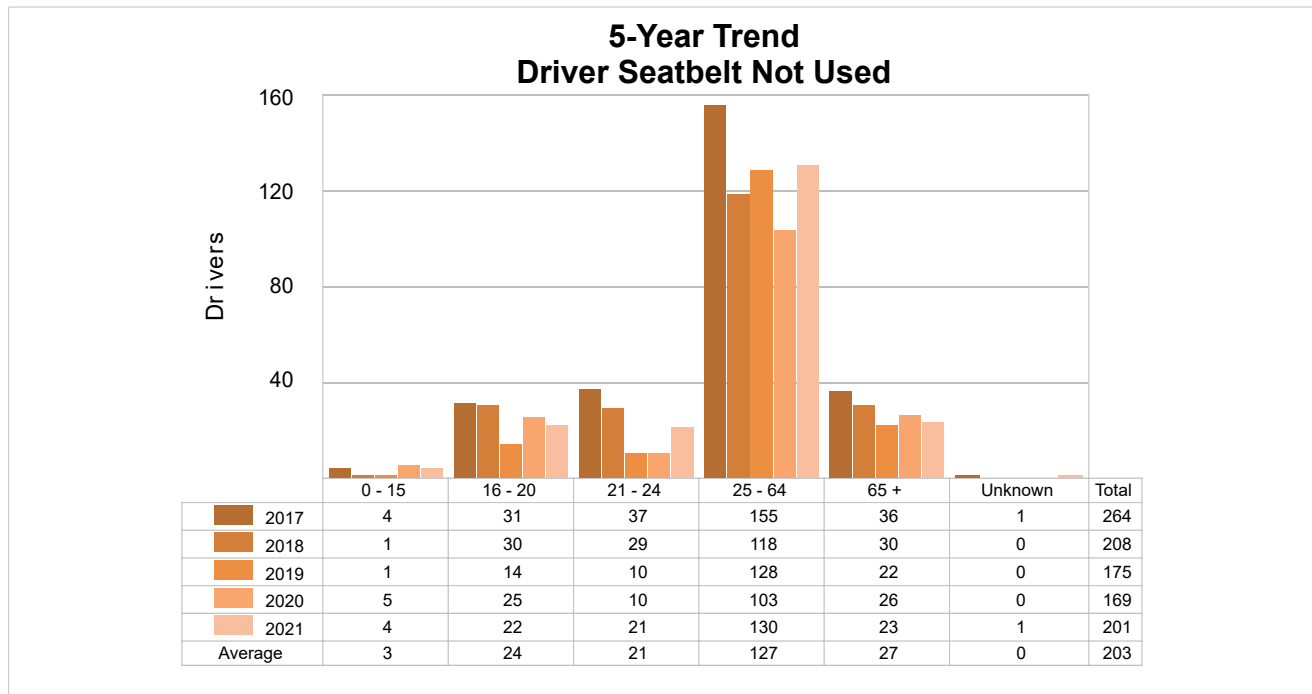
## 5-Year Trend - Restraint Use Among Drivers Coded Drinking

Restraint Use	2017			2018			2019			2020			2021		
	Drivers	Fatal Drivers	Injured Drivers	Drivers	Fatal Drivers	Injured Drivers	Drivers	Fatal Drivers	Injured Drivers	Drivers	Fatal Drivers	Injured Drivers	Drivers	Fatal Drivers	Injured Drivers
No Belts Available	3	0	2	2	0	2	1	0	0	1	0	1	4	0	2
Shoulder Belt Only Used	5	0	2	3	0	2	2	0	1	1	0	0	3	0	0
Lap Belt Only Used	0	0	0	1	1	0	2	0	1	0	0	0	1	0	0
Both Lap & Shoulder Belt Used	470	2	135	421	3	106	413	1	125	390	3	119	384	5	128
No Belts Used	39	6	31	40	5	23	37	6	22	36	7	25	33	5	20
Child Restraint Used - Forward Facing	0	0	0	0	0	0	0	0	0	0	0	0	0	0	0
Child Restraint Not Used, Unavailable or Improper Use	0	0	0	0	0	0	0	0	0	0	0	0	0	0	0
Child Restraint Used - Rear Facing	0	0	0	0	0	0	0	0	0	0	0	0	0	0	0
Child Restraint Used - Booster Seat	0	0	0	0	0	0	0	0	0	0	0	0	0	0	0
Restraint Failure	0	0	0	0	0	0	0	0	0	0	0	0	0	0	0
Restraint Use Unknown	115	1	31	114	1	24	126	0	35	112	4	30	117	0	35
Helmet Worn	12	1	10	11	2	9	14	1	13	14	1	11	15	1	11
Helmet Not Worn	18	1	14	18	1	14	14	1	12	15	4	10	15	1	14
Helmet Use Unknown	4	2	1	1	0	1	3	0	2	4	0	3	0	0	0
Uncoded & Errors	2	0	0	1	0	0	0	0	0	0	0	0	0	0	0
<b>Total</b>	<b>668</b>	<b>13</b>	<b>226</b>	<b>612</b>	<b>13</b>	<b>181</b>	<b>612</b>	<b>9</b>	<b>211</b>	<b>573</b>	<b>19</b>	<b>199</b>	<b>572</b>	<b>12</b>	<b>210</b>

## 5-Year Trend - Seatbelt Not Used Among Drivers by Age

Age Group	2017			2018			2019			2020			2021		
	Drivers	Fatal Drivers	Injured Drivers	Drivers	Fatal Drivers	Injured Drivers	Drivers	Fatal Drivers	Injured Drivers	Drivers	Fatal Drivers	Injured Drivers	Drivers	Fatal Drivers	Injured Drivers
0 - 15	4	0	3	1	0	0	1	0	1	5	0	4	4	0	4
16 - 20	31	2	14	30	1	16	14	1	5	25	2	13	22	1	14
21 - 24	37	2	18	29	3	15	10	1	1	10	1	5	21	0	14
25 - 64	155	5	51	118	5	46	128	9	46	103	5	50	130	12	52
65 +	36	1	17	30	2	6	22	1	8	26	4	10	23	0	5
Unknown	1	0	0	0	0	0	0	0	0	0	0	0	1	0	0
<b>Total</b>	<b>264</b>	<b>10</b>	<b>103</b>	<b>208</b>	<b>11</b>	<b>83</b>	<b>175</b>	<b>12</b>	<b>61</b>	<b>169</b>	<b>12</b>	<b>82</b>	<b>201</b>	<b>13</b>	<b>89</b>

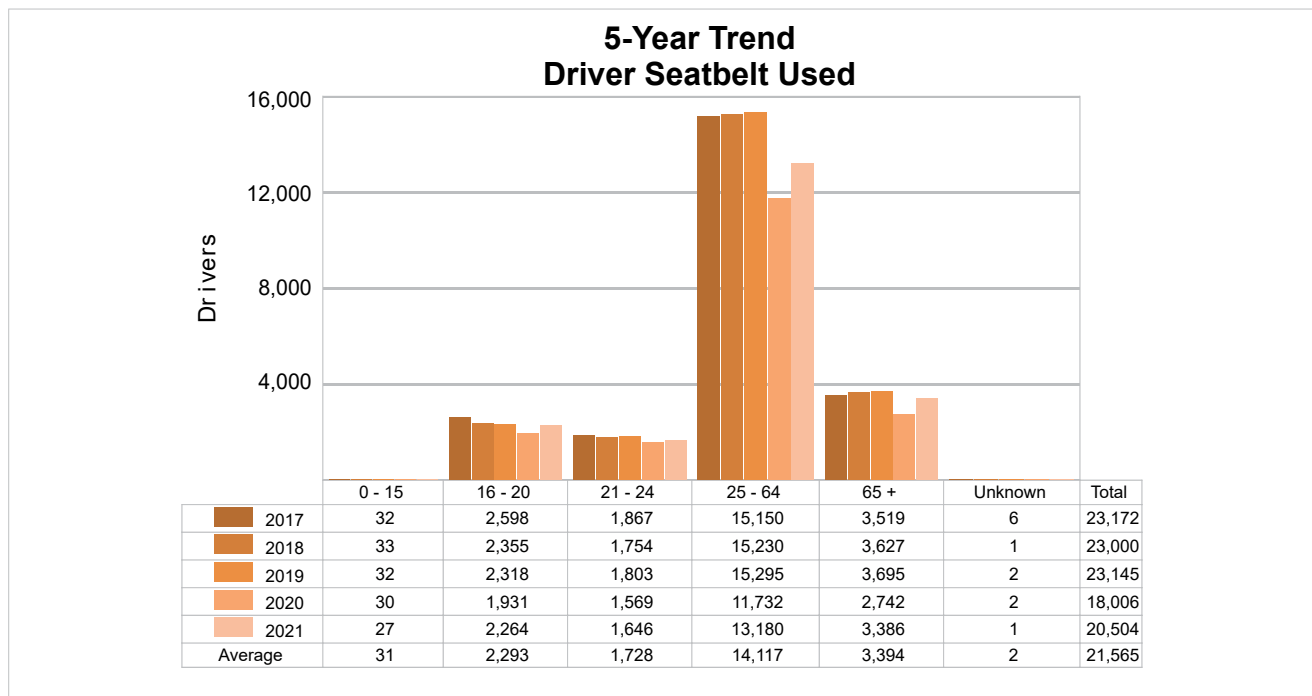
Note: Seatbelt Not Used includes no belts available or no belts used.



## 5-Year Trend - Seatbelt Used Among Drivers by Age

Age Group	2017			2018			2019			2020			2021		
	Drivers	Fatal Drivers	Injured Drivers	Drivers	Fatal Drivers	Injured Drivers	Drivers	Fatal Drivers	Injured Drivers	Drivers	Fatal Drivers	Injured Drivers	Drivers	Fatal Drivers	Injured Drivers
0 - 15	32	0	1	33	0	4	32	0	2	30	0	4	27	0	5
16 - 20	2,598	2	301	2,355	1	258	2,318	1	219	1,931	2	184	2,264	2	216
21 - 24	1,867	1	192	1,754	3	150	1,803	1	152	1,569	1	148	1,646	1	167
25 - 64	15,150	11	1,236	15,230	4	1,170	15,295	6	1,154	11,732	6	944	13,180	6	1,022
65 +	3,519	7	325	3,627	8	345	3,695	8	318	2,742	4	253	3,386	3	351
Unknown	6	0	1	1	0	0	2	0	0	2	0	0	1	0	0
<b>Total</b>	<b>23,172</b>	<b>21</b>	<b>2,056</b>	<b>23,000</b>	<b>16</b>	<b>1,927</b>	<b>23,145</b>	<b>16</b>	<b>1,845</b>	<b>18,006</b>	<b>13</b>	<b>1,533</b>	<b>20,504</b>	<b>12</b>	<b>1,761</b>

Note: Seatbelt Used includes shoulder belt only used, lap belt only used, both lap and shoulder belts used, and restraint failure.



## 5-Year Trend - Drivers in Crashes by Hazardous Action

Hazardous Action	2017		2018		2019		2020		2021	
	Total Drivers in Crashes	Drivers in Fatal Crashes	Total Drivers in Crashes	Drivers in Fatal Crashes	Total Drivers in Crashes	Drivers in Fatal Crashes	Total Drivers in Crashes	Drivers in Fatal Crashes	Total Drivers in Crashes	Drivers in Fatal Crashes
None	15,007	31	15,186	26	15,082	40	12,226	24	13,608	29
Speed Too Fast	2,797	14	2,563	9	2,669	15	1,757	15	1,987	25
Speed Too Slow	20	0	12	0	13	0	6	0	7	0
Failed to Yield	1,788	5	1,819	6	1,920	9	1,487	7	1,799	5
Disregard Traffic Control	237	2	231	3	233	3	223	2	231	1
Drove Wrong Way	8	1	8	0	8	1	7	0	6	0
Drove Left of Center	172	6	160	4	162	0	125	5	142	4
Improper Passing	92	0	116	0	93	2	94	0	104	2
Improper Lane Use	279	0	276	1	261	1	191	1	256	0
Improper Turn	148	0	160	0	164	0	138	0	187	0
Improper/No Signal	15	0	23	0	28	0	17	0	21	0
Improper Backing	338	0	353	0	323	0	241	0	264	0
Unable to Stop in Assured Clear Distance	2,046	3	1,929	1	2,105	3	1,480	0	1,791	0
Other	686	2	645	1	590	0	506	3	605	8
Unknown	648	9	569	13	631	8	529	8	758	5
Reckless Driving	76	3	88	1	76	1	92	5	77	2
Careless/Negligent Driving	603	1	558	5	506	6	487	10	619	1
Uncoded & Errors	152	0	123	1	69	0	14	0	5	0
<b>Total</b>	<b>25,112</b>	<b>77</b>	<b>24,819</b>	<b>71</b>	<b>24,933</b>	<b>89</b>	<b>19,620</b>	<b>80</b>	<b>22,467</b>	<b>82</b>

### Office of Highway Safety Planning

---

Physical Address:  
7150 Harris Drive  
Dimondale, Michigan 48821

Mailing Address:  
P.O. Box 30634  
Lansing, Michigan 48909

Find us on the web:  
[MichiganTrafficCrashFacts.org](http://MichiganTrafficCrashFacts.org)  
[mtcf-info@umich.edu](mailto:mtcf-info@umich.edu)

