



2021

MTCF
Michigan Traffic
Crash Facts

Michigan Traffic Crash Facts

Reporting Criteria

Please pay particular attention to the wording when interpreting the three levels of data gathered for this report.

Crash

The Crash Level analyzes data related to crash events and returns one result per crash.

Examples: Time, weather, and location.

Units

The Units Level analyzes the experience of the units in the crash and returns one result per vehicle, driver, pedestrian, bicyclist, or train.

Examples: Vehicle type, driver condition, and unit events.

People

The People Level analyzes the experience of the people involved in the crash and returns one result per occupant/person/party.

Examples: Age, injury severity, and seat belt or helmet use.

KABCO Injury Indicator:

K = Killed

A = Suspected Serious Injury

B = Suspected Minor Injury

C = Possible Injury

O = No Injury

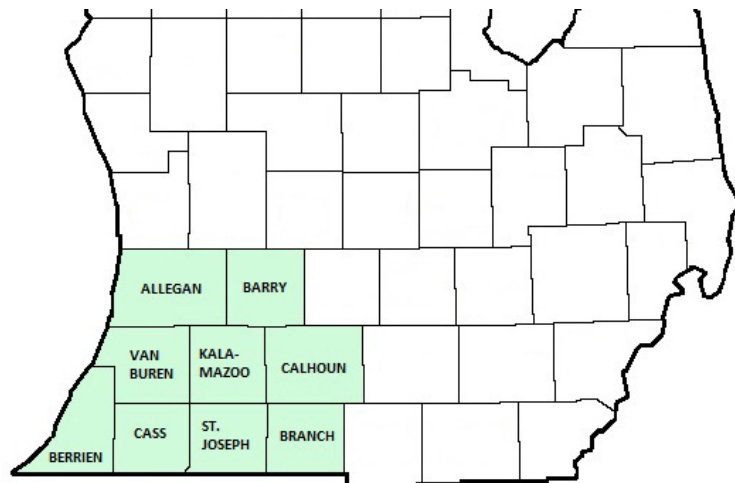
Property Damage Only (PDO)



Michigan State Police (MSP) District 5 - Southwest

2021 Traffic Crash Data & 2017-2021 5-Year Trends

Beginning in 2011, District 5 is comprised of Allegan, Barry, Berrien, Branch, Calhoun, Cass, Kalamazoo, St. Joseph and Van Buren counties. Trend tables for this report are based on those counties.



Sources:

The crashes in this report occurred on public roadways in Michigan and resulted in injuries, fatalities, or property damage (with \$1,000 as a reporting threshold). The information was gathered from Michigan Traffic Crash Report Forms (UD-10) submitted by local police departments, sheriff's offices, and the Michigan State Police. Other related information was obtained from the departments of Transportation, State, and Community Health.

MSP District 5 - Southwest

- There were 29,808 crashes in District 5 during 2021. [Page 1]
- A total of 156 fatalities resulted from 151 fatal crashes in 2021 in District 5. [Page 1]
- There were 6,477 injuries and 4,746 injury crashes. [Page 1]
- There were 24,911 property damage only crashes (no fatalities or injuries). [Page 1]
- November had the highest number of crashes (3,389). [Pages 1-2]
- August had the highest number of fatal crashes (20) and fatalities (21). [Pages 1-2]
- August had the highest number of injury crashes (492) and injuries (676). [Page 1]
- November had the highest number of property damage only crashes (2,998). [Page 1]
- Of all vehicles involved in fatal crashes, 28 (11.8%) were motorcycles. [Page 1]
- Friday was the day of the week with the highest number of crashes (4,953) and fatal crashes (31). [Pages 2-3]
- The 3:00 PM – 5:59 PM time period had the highest number of crashes (5,905). This holds true for every year between 2017 and 2021. The 3:00 PM – 5:59 PM time period had the highest number of fatal crashes (31). [Pages 5-6]
- During the period from 2017 to 2021, the highest number of deer crashes occurred in 2021 (8,288). The 6:00 AM – 8:59 AM time period had the highest number of deer-involved crashes. There were 3 fatal crashes involving deer in 2021. [Page 7]
- Kalamazoo County (27.6%) had the highest number of crashes in District 5 in 2021, followed by Calhoun County (15.1%), and Berrien County (14.7%). [Page 11]
- Kalamazoo County (25.0%) had the highest number of fatalities in District 5 in 2021, followed by Berrien County (16.0%), and Calhoun County (13.5%). [Page 11]
- The highest number of drivers in crashes (46,913) occurred during 2019 and the highest number of drivers coded drinking in crashes (1,182) occurred during 2017 within the five year period between 2017 and 2021. [Page 12]
- A total of 1,085 crashes involved alcohol in 2021. [Page 13]
- Alcohol-involved fatal crashes were the highest in 2021 during the five-year period from 2017 to 2021 at 48. [Page 13]
- A total of 325 crashes, 52 fatal crashes, and 63 suspected injury crashes involved drugs in 2021. [Page 14]
- There were 38,236 drivers wearing seatbelts and 413 drivers not wearing seatbelts in crashes in 2021. Of the 413 drivers not wearing seatbelts, 29 (7.0%) were killed and 167 (40.4%) were injured. [Pages 17-19]
- The most common hazardous action coded for drivers in 2021 in all crashes was unable to stop in assured clear distance (4,318), while the most common hazardous action coded for drivers in fatal crashes was unknown (37). [Page 20]

2021 - Crashes and Injury by Month

Month	Crashes				People	
	Total	Fatal	Injury	Property Damage Only (PDO)	Fatalities	Injuries
January	2,686	10	344	2,332	10	469
February	2,508	7	315	2,186	7	410
March	1,893	13	327	1,553	14	436
April	1,905	16	363	1,526	16	512
May	2,131	16	400	1,715	17	552
June	2,475	6	473	1,996	6	662
July	2,281	18	383	1,880	18	529
August	2,180	20	492	1,668	21	676
September	2,275	13	446	1,816	14	598
October	3,144	10	462	2,672	10	617
November	3,389	15	376	2,998	15	534
December	2,941	7	365	2,569	8	482
Total	29,808	151	4,746	24,911	156	6,477

2021 - Driver Statistics

Age Group	MSP District 5 - Southwest			Driver Rates	
	2019 Population*	Licensed Drivers	Drivers in Crashes	Per 10k Population	Per 10k Licensed
0 - 15	190,339	4,787	75	3.9	156.7
16 - 20	64,210	41,484	4,949	770.8	1,193.0
21 - 24	56,777	40,650	4,311	759.3	1,060.5
25 - 64	480,016	435,933	27,560	574.1	632.2
65 +	172,860	170,509	4,999	289.2	293.2
Unknown	0	0	3,292	--	--
Total	964,202	693,363	45,186	468.6	651.7

*2021 Population of Michigan Counties (by single-year of age) not yet available from U.S. Census Bureau.

2021 - Vehicles in Crashes

Vehicle Type	Motor Vehicles		Fatal Crashes		Injury Crashes	PDO Crashes
	Number of Vehicles	% of Total	Number	% of Total	Number	Number
Passenger Car, SUV, Van	35,246	78.0	155	65.4	6,246	28,845
Motor Home	171	0.4	0	0.0	27	144
Pickup Truck	5,864	13.0	32	13.5	990	4,842
Small Truck Under 10,000 lbs. GVWR	239	0.5	0	0.0	42	197
Motorcycle	392	0.9	28	11.8	274	90
Moped/Goped	49	0.1	0	0.0	40	9
Go-Cart/Golf Cart	6	0.0	0	0.0	4	2
Snowmobile	0	0.0	0	0.0	0	0
Off-Road Vehicle (ORV)/All-Terrain Vehicle (ATV)	27	0.1	3	1.3	17	7
Other (non-registered farm equipment, construction equipment, snow plows, etc.)	198	0.4	2	0.8	49	147
Truck/Bus (over 10,000 lbs. GVWR/8+ occupants/hazmat placard)	1,782	3.9	16	6.8	331	1,435
Uncoded & Errors	1,212	2.7	1	0.4	91	1,120
Total	45,186	100.0	237	100.0	8,111	36,838

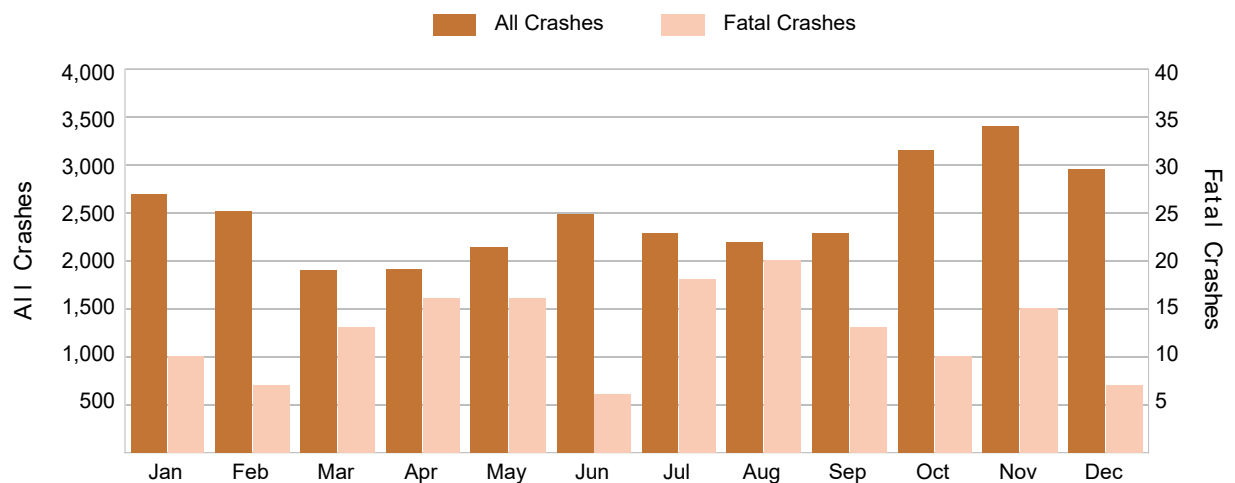
5-Year Trend - Crashes by Month

Month	2017		2018		2019		2020		2021	
	Total Crashes	Fatal Crashes	Total Crashes	Fatal Crashes	Total Crashes	Fatal Crashes	Total Crashes	Fatal Crashes	Total Crashes	Fatal Crashes
January	2,877	9	3,204	6	3,557	11	2,517	8	2,686	10
February	1,892	3	2,523	6	2,556	10	2,879	2	2,508	7
March	2,051	12	2,200	15	2,204	9	1,408	3	1,893	13
April	1,766	8	2,129	6	2,017	7	988	5	1,905	16
May	2,221	12	2,227	13	2,237	11	1,532	10	2,131	16
June	2,286	14	2,185	9	2,245	6	2,110	18	2,475	6
July	2,150	13	2,131	18	2,309	17	2,048	11	2,281	18
August	2,051	15	1,963	11	2,008	9	1,995	19	2,180	20
September	2,150	12	2,136	13	2,112	13	2,129	12	2,275	13
October	2,890	7	2,792	13	3,030	14	2,703	14	3,144	10
November	3,015	9	3,859	4	3,793	8	2,560	13	3,389	15
December	4,127	12	2,579	6	2,777	7	2,448	9	2,941	7
Total	29,476	126	29,928	120	30,845	122	25,317	124	29,808	151

5-Year Trend - Crashes by Day of Week

Day	2017		2018		2019		2020		2021	
	Total Crashes	Fatal Crashes	Total Crashes	Fatal Crashes	Total Crashes	Fatal Crashes	Total Crashes	Fatal Crashes	Total Crashes	Fatal Crashes
Monday	4,273	8	4,664	12	4,577	18	3,511	26	4,412	22
Tuesday	4,161	10	4,326	12	5,114	14	3,554	23	4,672	18
Wednesday	4,301	19	4,474	13	4,701	18	4,059	13	4,175	17
Thursday	4,468	22	4,378	22	4,291	14	3,894	17	4,266	16
Friday	4,882	23	5,141	21	4,882	18	4,116	11	4,953	31
Saturday	3,955	20	3,747	18	3,785	19	3,389	21	3,959	23
Sunday	3,436	24	3,198	22	3,495	21	2,794	13	3,371	24
Total	29,476	126	29,928	120	30,845	122	25,317	124	29,808	151

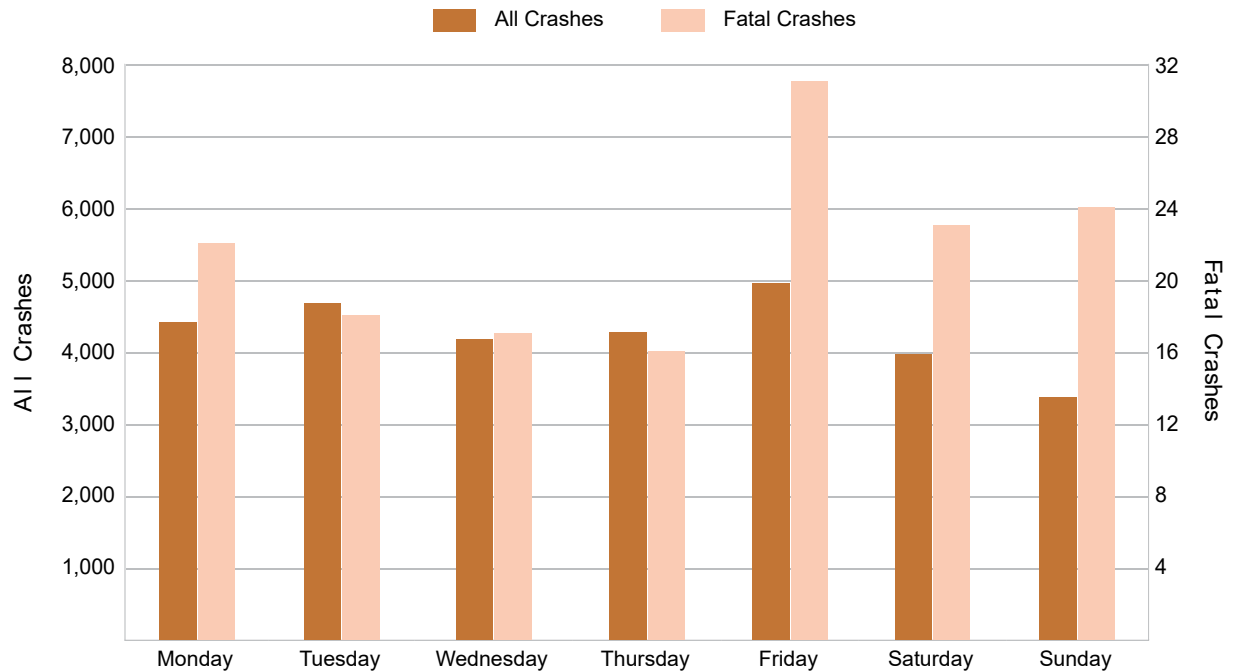
2021 Crashes by Month



2021 - Crashes by Day of Week

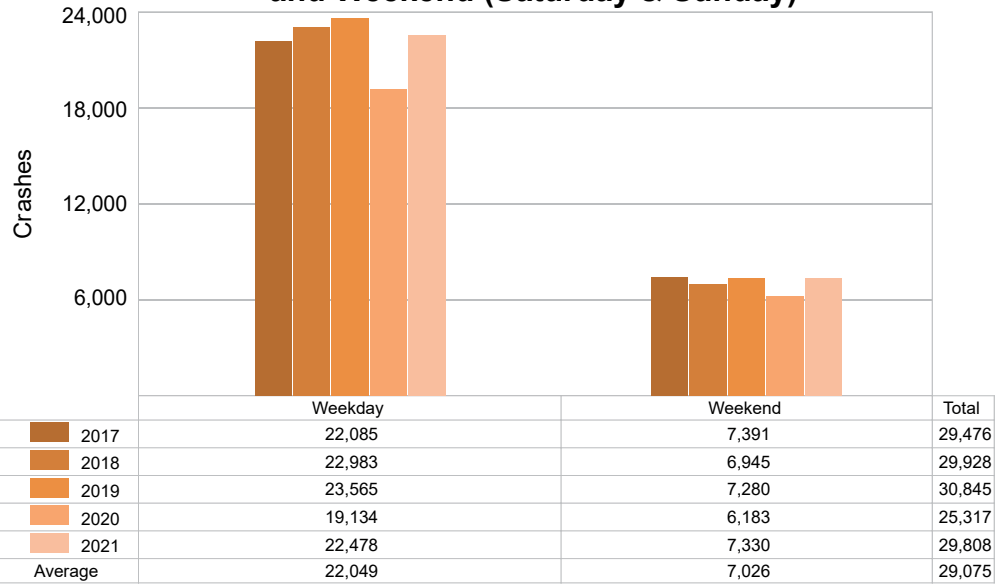
Day	All Crashes		Fatal Crashes		Injury Crashes			PDO Crashes
	Number	% of Total	Fatal	% of Fatal	A	B	C	Number
Monday	4,412	14.8	22	14.6	73	225	330	3,762
Tuesday	4,672	15.7	18	11.9	86	240	391	3,937
Wednesday	4,175	14.0	17	11.3	89	197	375	3,497
Thursday	4,266	14.3	16	10.6	74	229	376	3,571
Friday	4,953	16.6	31	20.5	94	280	408	4,140
Saturday	3,959	13.3	23	15.2	110	226	352	3,248
Sunday	3,371	11.3	24	15.9	79	212	300	2,756
Total	29,808	100.0	151	100.0	605	1,609	2,532	24,911

2021 Day of Week and Severity



5-Year Trend - Crashes by Weekday and Weekend

Portion of Week	2017		2018		2019		2020		2021	
	Total Crashes	Fatal Crashes	Total Crashes	Fatal Crashes	Total Crashes	Fatal Crashes	Total Crashes	Fatal Crashes	Total Crashes	Fatal Crashes
Weekday	22,085	82	22,983	80	23,565	82	19,134	90	22,478	104
Weekend	7,391	44	6,945	40	7,280	40	6,183	34	7,330	47
Total	29,476	126	29,928	120	30,845	122	25,317	124	29,808	151

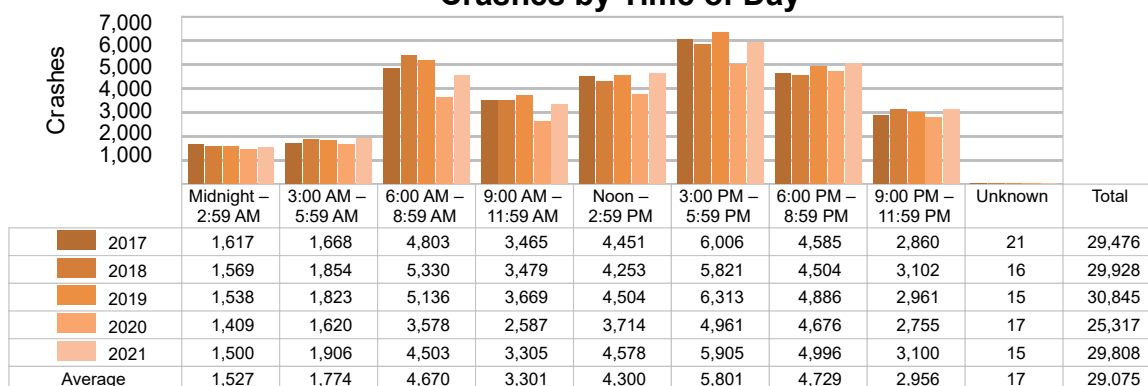
5-Year Crash Trends by Weekday (Monday - Friday)
and Weekend (Saturday & Sunday)

5-Year Trend - Crashes by Time of Day

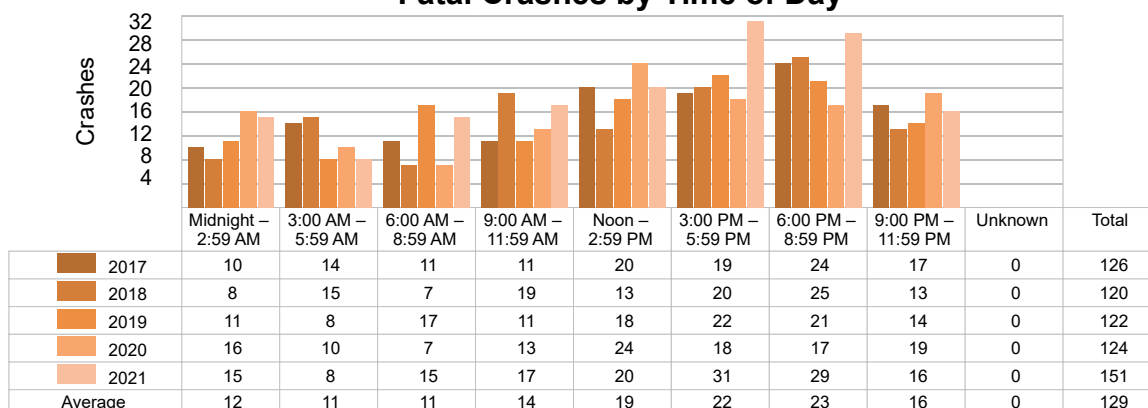
Time of Day	2017		2018		2019		2020		2021	
	Total Crashes	Fatal Crashes	Total Crashes	Fatal Crashes	Total Crashes	Fatal Crashes	Total Crashes	Fatal Crashes	Total Crashes	Fatal Crashes
Midnight – 2:59 AM	1,617	10	1,569	8	1,538	11	1,409	16	1,500	15
3:00 AM – 5:59 AM	1,668	14	1,854	15	1,823	8	1,620	10	1,906	8
6:00 AM – 8:59 AM	4,803	11	5,330	7	5,136	17	3,578	7	4,503	15
9:00 AM – 11:59 AM	3,465	11	3,479	19	3,669	11	2,587	13	3,305	17
Noon – 2:59 PM	4,451	20	4,253	13	4,504	18	3,714	24	4,578	20
3:00 PM – 5:59 PM	6,006 †	19	5,821 †	20	6,313 †	22	4,961 †	18	5,905 †	31
6:00 PM – 8:59 PM	4,585	24	4,504	25	4,886	21	4,676	17	4,996	29
9:00 PM – 11:59 PM	2,860	17	3,102	13	2,961	14	2,755	19	3,100	16
Unknown	21	0	16	0	15	0	17	0	15	0
Total	29,476	126	29,928	120	30,845	122	25,317	124	29,808	151

Note: † Indicates that the highest number of total crashes reported in the 5-year period occurred in the same time period.

5-Year Trend Crashes by Time of Day

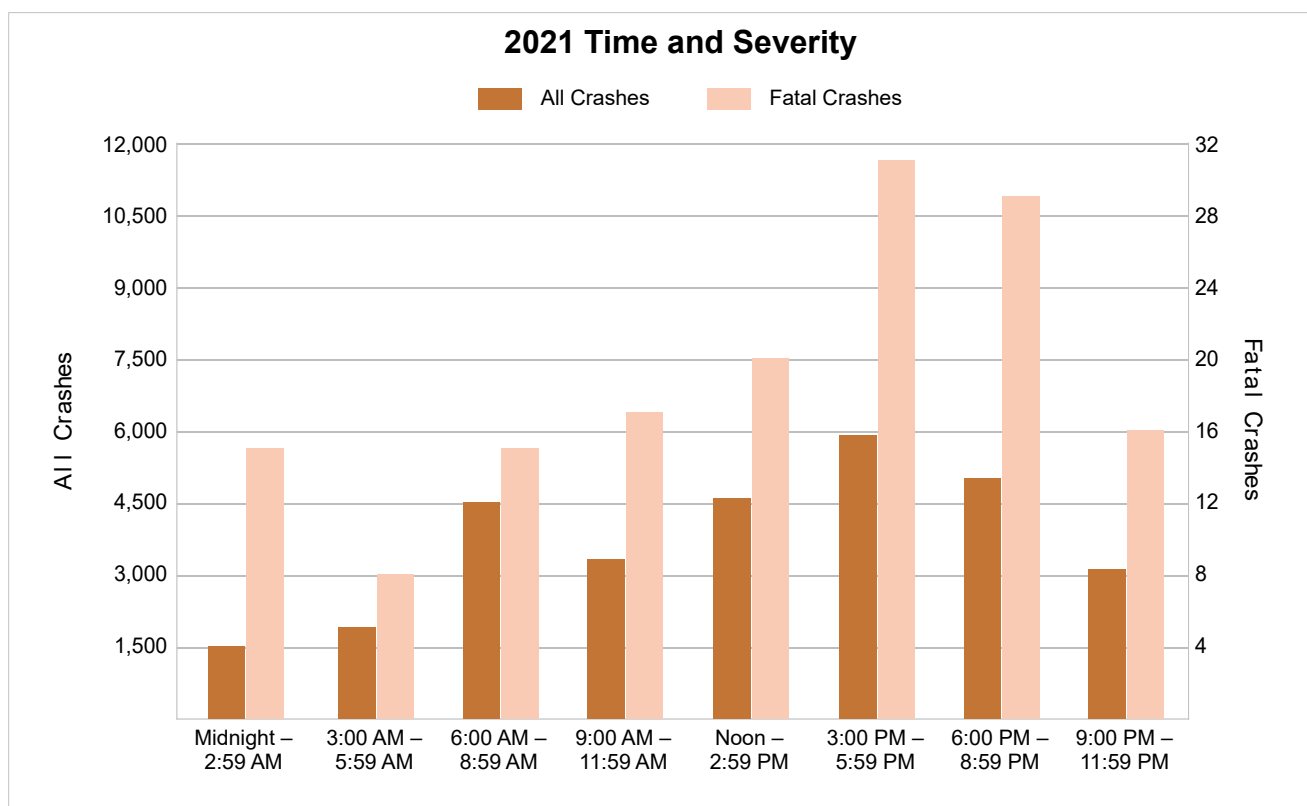


5-Year Trend Fatal Crashes by Time of Day



2021 - Time and Severity

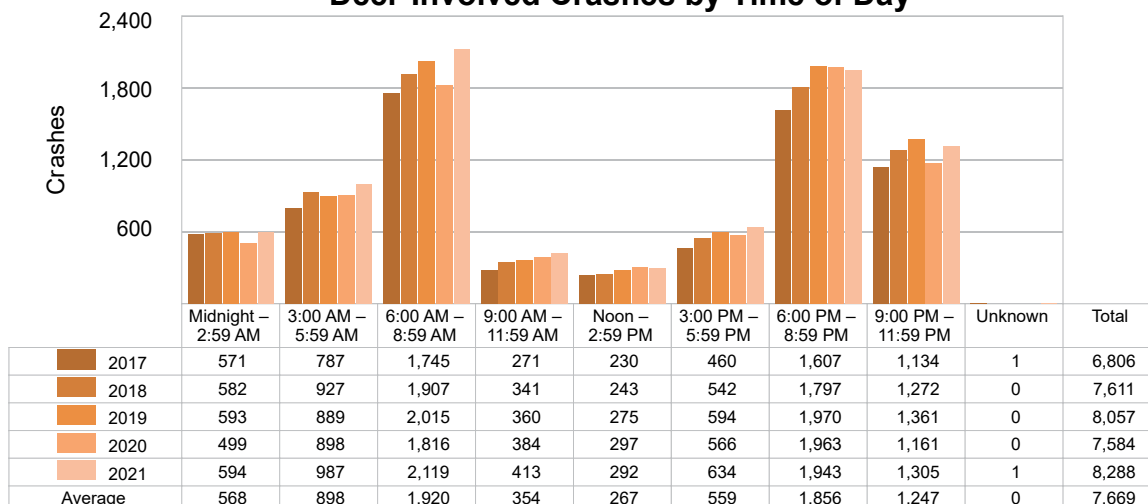
Time of Day	All Crashes		Fatal Crashes		Injury Crashes			PDO Crashes
	Number	% of Total	Number	% of Fatal	A	B	C	Number
Midnight – 2:59 AM	1,500	5.0	15	9.9	38	87	114	1,246
3:00 AM – 5:59 AM	1,906	6.4	8	5.3	25	81	113	1,679
6:00 AM – 8:59 AM	4,503	15.1	15	9.9	65	151	275	3,997
9:00 AM – 11:59 AM	3,305	11.1	17	11.3	74	196	332	2,686
Noon – 2:59 PM	4,578	15.4	20	13.2	107	326	531	3,594
3:00 PM – 5:59 PM	5,905	19.8	31	20.5	121	372	598	4,783
6:00 PM – 8:59 PM	4,996	16.8	29	19.2	93	245	366	4,263
9:00 PM – 11:59 PM	3,100	10.4	16	10.6	82	150	203	2,649
Unknown	15	0.1	0	0.0	0	1	0	14
Total	29,808	100.0	151	100.0	605	1,609	2,532	24,911



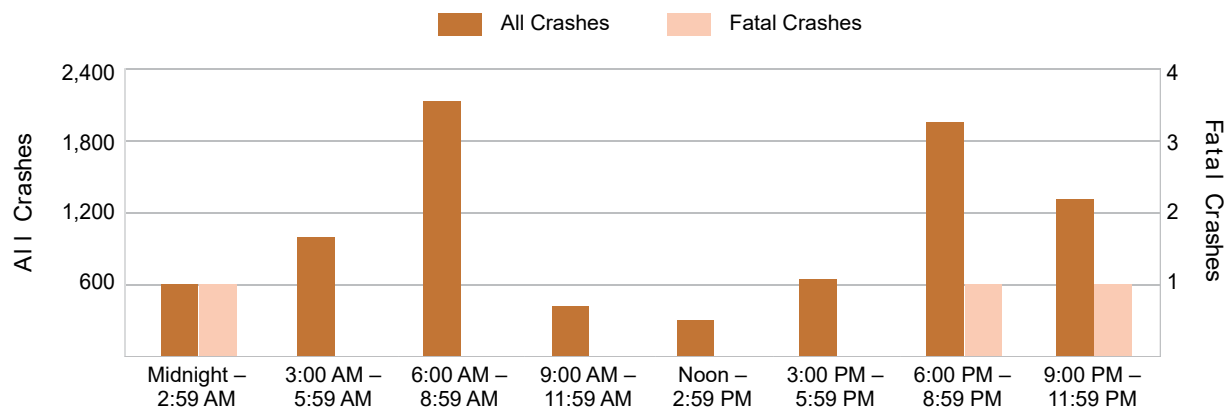
5-Year Trend - Deer-Involved Crashes by Time of Day

Time of Day	2017		2018		2019		2020		2021	
	Total Crashes	Fatal Crashes	Total Crashes	Fatal Crashes	Total Crashes	Fatal Crashes	Total Crashes	Fatal Crashes	Total Crashes	Fatal Crashes
Midnight – 2:59 AM	571	0	582	0	593	0	499	0	594	1
3:00 AM – 5:59 AM	787	0	927	0	889	0	898	0	987	0
6:00 AM – 8:59 AM	1,745	0	1,907	0	2,015	0	1,816	0	2,119	0
9:00 AM – 11:59 AM	271	0	341	0	360	0	384	0	413	0
Noon – 2:59 PM	230	0	243	0	275	0	297	0	292	0
3:00 PM – 5:59 PM	460	0	542	1	594	0	566	0	634	0
6:00 PM – 8:59 PM	1,607	2	1,797	0	1,970	2	1,963	0	1,943	1
9:00 PM – 11:59 PM	1,134	0	1,272	0	1,361	1	1,161	0	1,305	1
Unknown	1	0	0	0	0	0	0	0	1	0
Total	6,806	2	7,611	1	8,057	3	7,584	0	8,288	3

5-Year Trend Deer-Involved Crashes by Time of Day

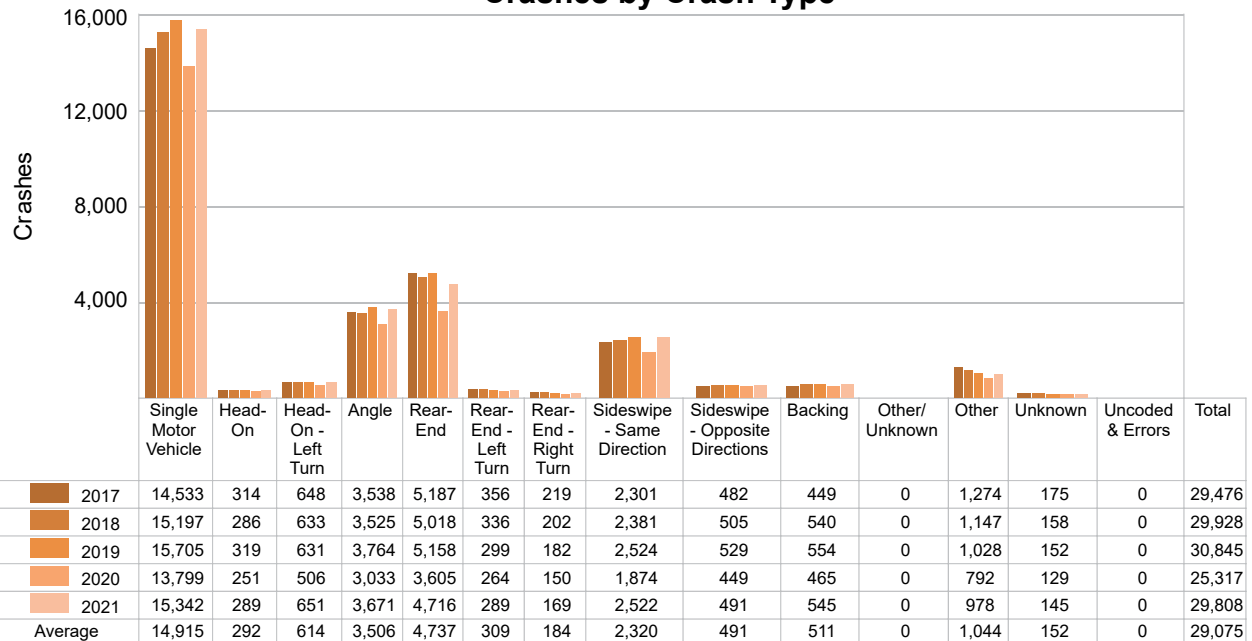


2021 Time and Severity of Deer-Involved Crashes



5-Year Trend - Crashes by Crash Type

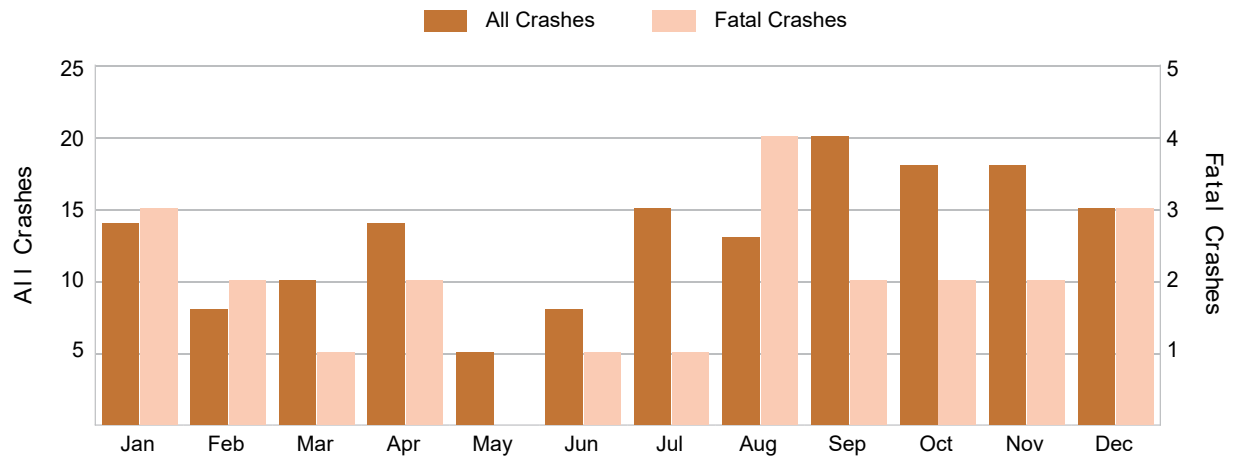
Crash Type	2017		2018		2019		2020		2021	
	Total Crashes	Fatal Crashes	Total Crashes	Fatal Crashes	Total Crashes	Fatal Crashes	Total Crashes	Fatal Crashes	Total Crashes	Fatal Crashes
Single Motor Vehicle	14,533	66	15,197	64	15,705	68	13,799	60	15,342	76
Head-On	314	12	286	9	319	13	251	13	289	18
Head-On - Left Turn	648	4	633	3	631	3	506	6	651	3
Angle	3,538	21	3,525	23	3,764	17	3,033	27	3,671	29
Rear-End	5,187	9	5,018	12	5,158	7	3,605	11	4,716	9
Rear-End - Left Turn	356	1	336	1	299	0	264	0	289	0
Rear-End - Right Turn	219	0	202	0	182	0	150	0	169	0
Sideswipe - Same Direction	2,301	2	2,381	0	2,524	3	1,874	2	2,522	3
Sideswipe - Opposite Directions	482	1	505	0	529	0	449	1	491	2
Backing	449	0	540	0	554	0	465	0	545	0
Other/Unknown	0	0	0	0	0	0	0	0	0	0
Other	1,274	10	1,147	8	1,028	11	792	4	978	10
Unknown	175	0	158	0	152	0	129	0	145	1
Uncoded & Errors	0	0	0	0	0	0	0	0	0	0
Total	29,476	126	29,928	120	30,845	122	25,317	124	29,808	151

5-Year Trend
Crashes by Crash Type

5-Year Trend - Pedestrian-Involved Crashes by Month

Month	2017		2018		2019		2020		2021	
	Total Crashes	Fatal Crashes	Total Crashes	Fatal Crashes	Total Crashes	Fatal Crashes	Total Crashes	Fatal Crashes	Total Crashes	Fatal Crashes
January	23	3	17	2	19	2	18	2	14	3
February	12	0	15	2	10	2	12	0	8	2
March	12	1	10	3	13	1	8	0	10	1
April	8	0	14	0	12	0	3	1	14	2
May	12	1	17	1	16	1	4	0	5	0
June	15	1	5	0	11	1	22	2	8	1
July	15	2	16	1	9	0	9	2	15	1
August	15	3	14	2	14	3	12	2	13	4
September	28	4	15	0	20	0	17	1	20	2
October	25	3	19	2	28	5	10	1	18	2
November	20	1	12	0	17	1	16	2	18	2
December	20	0	17	4	13	1	12	0	15	3
Total	205	19	171	17	182	17	143	13	158	23

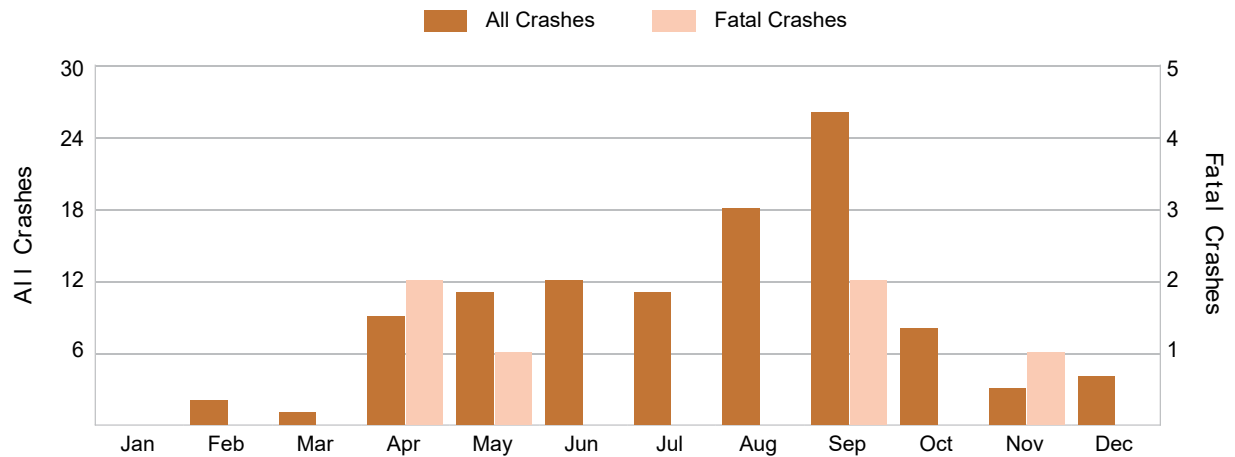
2021 Pedestrian-Involved Crashes by Month



5-Year Trend - Bicyclist-Involved Crashes by Month

Month	2017		2018		2019		2020		2021	
	Total Crashes	Fatal Crashes	Total Crashes	Fatal Crashes	Total Crashes	Fatal Crashes	Total Crashes	Fatal Crashes	Total Crashes	Fatal Crashes
January	0	0	1	0	2	0	4	0	0	0
February	5	0	2	0	1	0	1	0	2	0
March	5	0	10	0	5	0	4	0	1	0
April	10	0	4	0	8	0	5	0	9	2
May	10	0	15	0	5	0	10	0	11	1
June	18	1	17	0	16	0	18	0	12	0
July	24	1	20	2	25	0	21	0	11	0
August	18	1	25	1	19	0	14	1	18	0
September	16	0	31	2	18	0	8	1	26	2
October	10	0	12	0	10	0	8	1	8	0
November	6	0	4	0	5	0	9	0	3	1
December	1	0	4	0	7	0	3	0	4	0
Total	123	3	145	5	121	0	105	3	105	6

2021 Bicyclist-Involved Crashes by Month



2021 - Reported Motor Vehicle Crashes by County

County	Crashes												
	Total	Fatal	Injury	Property Damage	Inter-State	US Route	State Route	Local Street	Alcohol-Involved	Drug-Involved	Deer-Involved	Pedestrian-Involved	Bicyclist-Involved
Allegan	3,901	14	540	3,347	344	491	699	2,364	154	30	1,288	10	11
Barry	1,524	6	209	1,309	0	0	616	906	59	16	720	5	4
Berrien	4,385	24	789	3,572	683	407	935	2,350	174	50	1,013	16	17
Branch	1,704	8	230	1,466	148	406	86	1,056	27	12	808	12	7
Calhoun	4,512	20	602	3,890	1,054	0	1,156	2,284	160	50	1,247	30	9
Cass	1,625	16	219	1,390	0	181	508	936	72	24	657	6	1
Kalamazoo	8,236	38	1,490	6,708	568	345	1,170	6,138	279	84	1,137	55	44
St. Joseph	1,702	9	296	1,397	0	431	399	871	67	17	565	13	4
Van Buren	2,219	16	371	1,832	391	0	463	1,359	93	42	853	11	8
Total	29,808	151	4,746	24,911	3,188	2,261	6,032	18,264	1,085	325	8,288	158	105

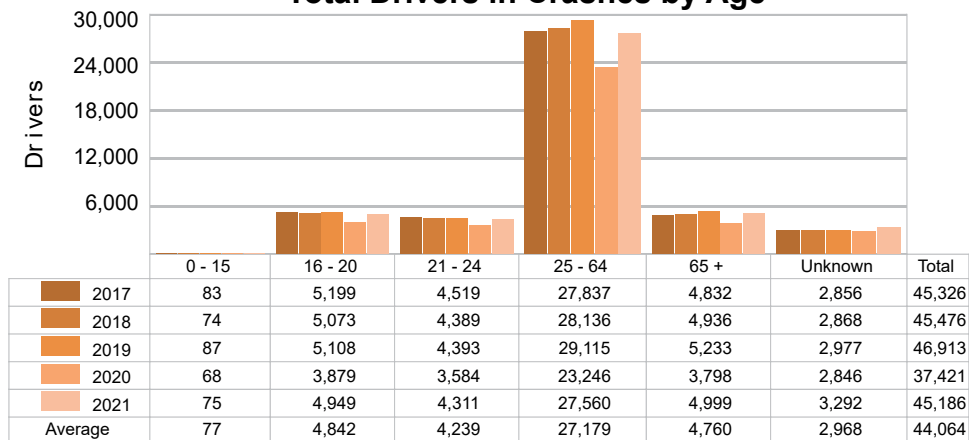
2021 - People in Reported Motor Vehicle Crashes by County

County	People					
	Fatalities	Suspected Serious Injuries	Suspected Minor Injuries	Possible Injuries	No Injuries	Uncoded & Errors
Allegan	14	148	444	655	5,420	206
Barry	6	96	184	179	2,054	46
Berrien	25	195	508	1,123	6,570	509
Branch	8	64	237	188	2,191	73
Calhoun	21	161	519	730	6,697	391
Cass	17	89	150	252	2,251	85
Kalamazoo	39	397	1,121	2,256	13,571	1,560
St. Joseph	9	104	234	354	2,464	158
Van Buren	17	122	295	397	3,125	121
Total	156	1,376	3,692	6,134	44,343	3,149

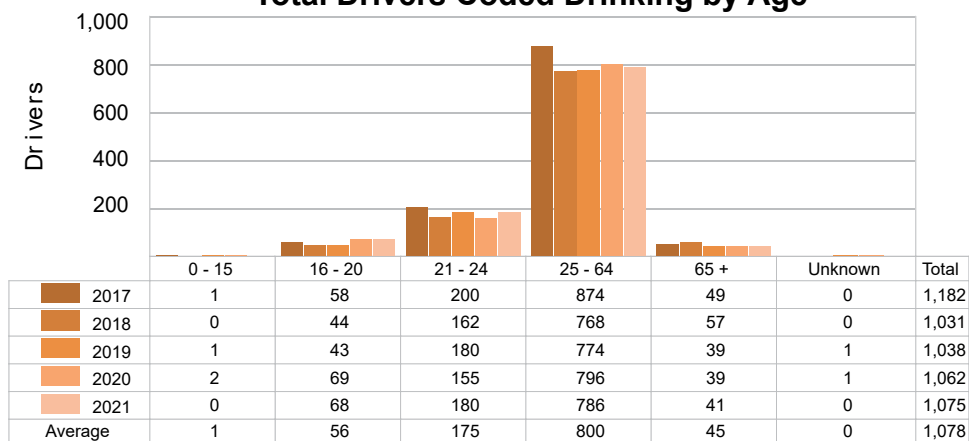
5-Year Trend - Drivers in Crashes Coded Drinking by Driver Age

Driver Age	2017		2018		2019		2020		2021	
	Total Drivers in Crashes	Total Drivers Coded Drinking	Total Drivers in Crashes	Total Drivers Coded Drinking	Total Drivers in Crashes	Total Drivers Coded Drinking	Total Drivers in Crashes	Total Drivers Coded Drinking	Total Drivers in Crashes	Total Drivers Coded Drinking
0 - 15	83	1	74	0	87	1	68	2	75	0
16 - 20	5,199	58	5,073	44	5,108	43	3,879	69	4,949	68
21 - 24	4,519	200	4,389	162	4,393	180	3,584	155	4,311	180
25 - 64	27,837	874	28,136	768	29,115	774	23,246	796	27,560	786
65 +	4,832	49	4,936	57	5,233	39	3,798	39	4,999	41
Unknown	2,856	0	2,868	0	2,977	1	2,846	1	3,292	0
Total	45,326	1,182	45,476	1,031	46,913	1,038	37,421	1,062	45,186	1,075

5-Year Trend Total Drivers in Crashes by Age



5-Year Trend Total Drivers Coded Drinking by Age



**2021 - Bodily Alcohol Concentration (BAC) Results Among
All Vehicle Drivers in Alcohol-Involved Crashes by Age**

Age Group	Drivers				BAC Result Range for Drivers Coded Drinking				
	Total Drivers in Alcohol-Involved Crashes	Total Drivers Tested in all Crashes	Total Drivers Coded Drinking, Tested	Total Drivers Coded Drinking	BAC = 0.00	BAC 0.01 g/dL to 0.07 g/dL	BAC 0.08 g/dL to 0.16 g/dL	BAC 0.17 g/dL and Above	BAC Not Reported
0 - 15	0	0	0	0	0	0	0	0	0
16 - 20	95	89	61	68	0	9	26	16	17
21 - 24	208	204	155	180	1	14	56	50	59
25 - 64	1,025	941	675	786	4	57	168	298	259
65 +	72	74	38	41	0	4	8	13	16
Unknown	84	1	0	0	0	0	0	0	0
Total	1,484	1,309	929	1,075	5	84	258	377	351

Notes: BAC measured in grams (g) per deciliter (dL).

BAC may not be reported if drivers are not tested or if the results are not available immediately (as in the case of a blood test).

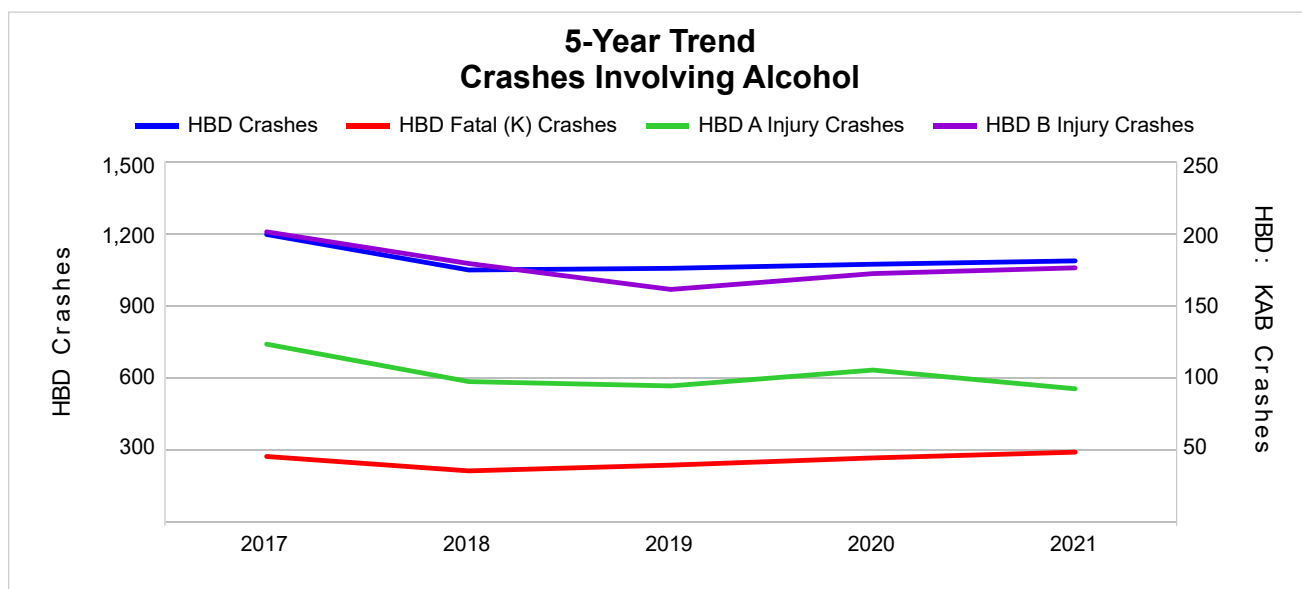
A driver may be coded by the officer as drinking even though no test is administered.

5-Year Trend - Crashes Involving Alcohol

Year	All Crashes	HBD Crashes	% HBD	Fatal Crashes	HBD Fatal Crashes	% HBD	A Injury Crashes	HBD A Injury Crashes	% HBD	B Injury Crashes	HBD B Injury Crashes	% HBD
2017	29,476	1,195	4.1	126	45	35.7	627	123	19.6	1,513	201	13.3
2018	29,928	1,047	3.5	120	35	29.2	544	97	17.8	1,482	179	12.1
2019	30,845	1,054	3.4	122	39	32.0	541	94	17.4	1,421	161	11.3
2020	25,317	1,071	4.2	124	44	35.5	551	105	19.1	1,249	172	13.8
2021	29,808	1,085	3.6	151 **	48 **	31.8	605	92 *	15.2 *	1,609 **	176	10.9 *

Note: * Indicates that the most recent year is the lowest number or percentage reported in the 5-year period in that column.

** Indicates that the most recent year is the highest number or percentage reported in the 5-year period in that column.



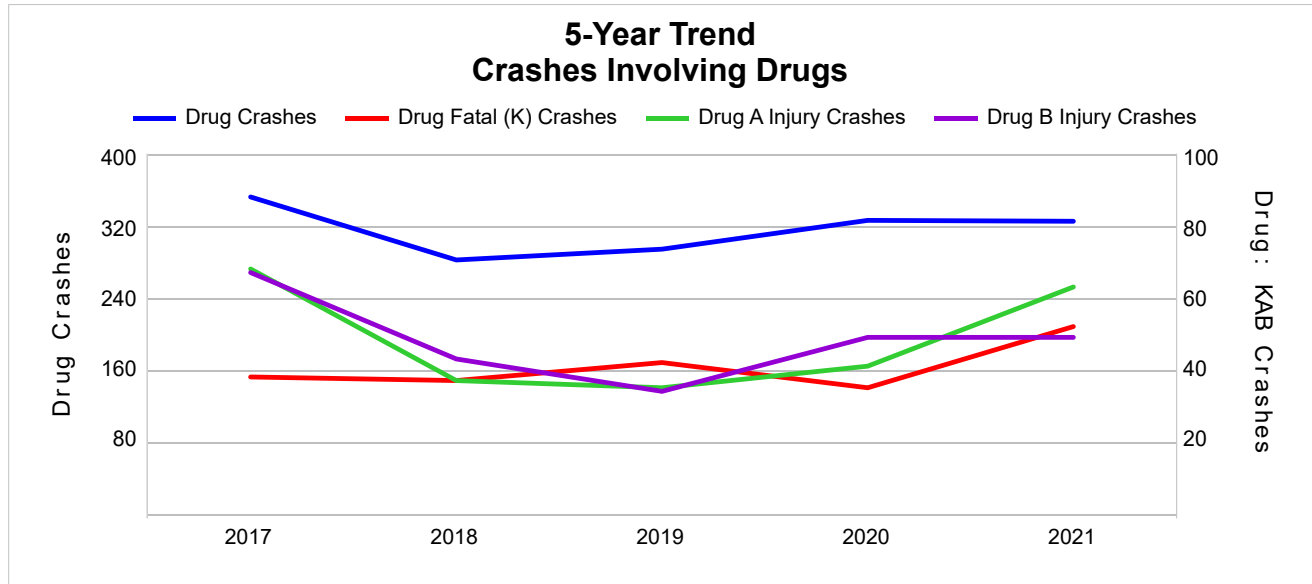
Note: Had-Been-Drinking (HBD)

5-Year Trend - Crashes Involving Drugs

Year	All Crashes	Drug Crashes	% Drug	Fatal Crashes	Drug Fatal Crashes	% Drug	A Injury Crashes	Drug A Injury Crashes	% Drug	B Injury Crashes	Drug B Injury Crashes	% Drug
2017	29,476	352	1.2	126	38	30.2	627	68	10.8	1,513	67	4.4
2018	29,928	282	0.9	120	37	30.8	544	37	6.8	1,482	43	2.9
2019	30,845	294	1.0	122	42	34.4	541	35	6.5	1,421	34	2.4
2020	25,317	326	1.3	124	35	28.2	551	41	7.4	1,249	49	3.9
2021	29,808	325	1.1	151 **	52 **	34.4 **	605	63	10.4	1,609 **	49	3.0

Note: * Indicates that the most recent year is the lowest number or percentage reported in the 5-year period in that column.

** Indicates that the most recent year is the highest number or percentage reported in the 5-year period in that column.

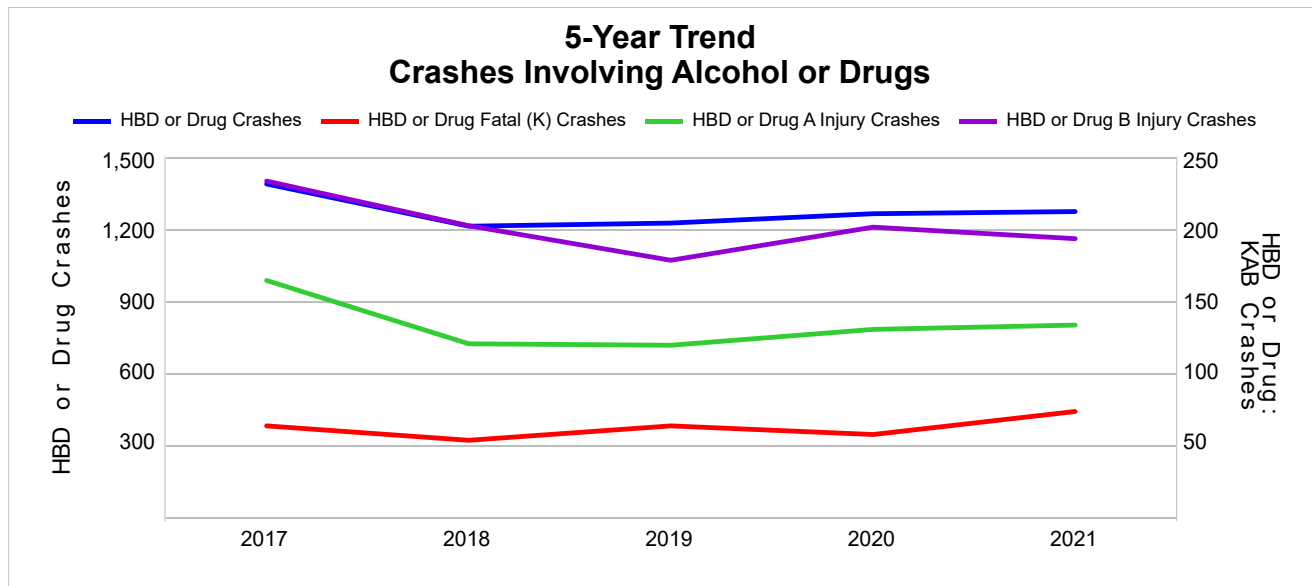


5-Year Trend - Crashes Involving Alcohol or Drugs

Year	All Crashes	HBD or Drug Crashes	% HBD or Drug	Fatal Crashes	HBD or Drug Fatal Crashes	% HBD or Drug	A Injury Crashes	HBD or Drug A Injury Crashes	% HBD or Drug	B Injury Crashes	HBD or Drug B Injury Crashes	% HBD or Drug
2017	29,476	1,386	4.7	126	63	50.0	627	164	26.2	1,513	233	15.4
2018	29,928	1,210	4.0	120	53	44.2	544	120	22.1	1,482	202	13.6
2019	30,845	1,223	4.0	122	63	51.6	541	119	22.0	1,421	178	12.5
2020	25,317	1,262	5.0	124	57	46.0	551	130	23.6	1,249	201	16.1
2021	29,808	1,271	4.3	151 **	73 **	48.3	605	133	22.0 *	1,609 **	193	12.0 *

Note: * Indicates that the most recent year is the lowest number or percentage reported in the 5-year period in that column.

** Indicates that the most recent year is the highest number or percentage reported in the 5-year period in that column.



Note: Had-Been-Drinking (HBD)

2021 - Restraints Worn Among Vehicle Drivers and Injured Passengers by Vehicle Type

Vehicle Type	Total Occupants			Fatalities			A - Suspected Serious			B - Suspected Minor			C - Possible Injury			No Injury		
	Total	Used Restraint	%	Total	Used Restraint	%	Total	Used Restraint	%	Total	Used Restraint	%	Total	Used Restraint	%	Total	Used Restraint	%
Passenger Car, SUV, Van	36,575	32,029	87.6	84	44	52.4	454	316	69.6	1,492	1,319	88.4	3,086	2,782	90.1	29,895	27,568	92.2
Motor Home	183	169	92.3	0	0	0.0	1	1	100.0	5	5	100.0	17	17	100.0	153	146	95.4
Pickup Truck	6,031	5,363	88.9	13	4	30.8	87	62	71.3	221	193	87.3	371	332	89.5	5,056	4,772	94.4
Small Truck Under 10,000 lbs. GVWR	243	212	87.2	0	0	0.0	4	4	100.0	9	8	88.9	10	9	90.0	204	191	93.6
Motorcycle	418	211	50.5	25	11	44.0	112	54	48.2	133	67	50.4	53	32	60.4	83	47	56.6
Moped/Goped	49	16	32.7	0	0	0.0	7	3	42.9	20	3	15.0	12	6	50.0	7	4	57.1
Go-Cart/Golf Cart	8	0	0.0	0	0	0.0	2	0	0.0	2	0	0.0	1	0	0.0	2	0	0.0
Snowmobile	0	0	0.0	0	0	0.0	0	0	0.0	0	0	0.0	0	0	0.0	0	0	0.0
Off-Road Vehicle (ORV)/All-Terrain Vehicle (ATV)	35	2	5.7	3	0	0.0	12	0	0.0	6	1	16.7	4	0	0.0	8	1	12.5
Other (non-registered farm equipment, construction equipment, snow plows, etc.)	206	121	58.7	1	0	0.0	3	1	33.3	9	5	55.6	14	7	50.0	159	108	67.9
Truck/Bus (over 10,000 lbs. GVWR/ 8+ occupants/ hazmat placard)	1,789	1,605	89.7	2	1	50.0	10	9	90.0	47	43	91.5	69	60	87.0	1,592	1,492	93.7
Uncoded & Errors	1,212	0	0.0	0	0	0.0	0	0	0.0	0	0	0.0	0	0	0.0	51	0	0.0
Total	46,749	39,728	85.0	128	60	46.9	692	450	65.0	1,944	1,644	84.6	3,637	3,245	89.2	37,210	34,329	92.3

Note: Restraint Use includes shoulder belt only used, lap belt only used, both lap and shoulder belts used, child restraint used, restraint failure, and helmet worn.

2021 - Restraints Worn Among Vehicle Drivers and Injured Passengers by Age

Age Group	Total Occupants			Fatalities			A - Suspected Serious			B - Suspected Minor			C - Possible Injury			No Injury		
	Total	Used Restraint	%	Total	Used Restraint	%	Total	Used Restraint	%	Total	Used Restraint	%	Total	Used Restraint	%	Total	Used Restraint	%
0 - 15	449	375	83.5	3	3	100.0	25	14	56.0	105	85	81.0	254	226	89.0	61	47	77.0
16 - 20	5,195	4,767	91.8	6	4	66.7	75	43	57.3	256	220	85.9	461	409	88.7	4,388	4,091	93.2
21 - 24	4,472	4,035	90.2	13	4	30.8	65	45	69.2	226	184	81.4	388	326	84.0	3,761	3,476	92.4
25 - 64	28,175	25,746	91.4	77	35	45.5	440	285	64.8	1,096	914	83.4	2,073	1,863	89.9	24,376	22,649	92.9
65 +	5,166	4,805	93.0	29	14	48.3	87	63	72.4	261	241	92.3	455	421	92.5	4,319	4,066	94.1
Unknown	3,292	0	0.0	0	0	0.0	0	0	0.0	0	0	0.0	6	0	0.0	305	0	0.0
Total	46,749	39,728	85.0	128	60	46.9	692	450	65.0	1,944	1,644	84.6	3,637	3,245	89.2	37,210	34,329	92.3

Note: Restraint Use includes shoulder belt only used, lap belt only used, both lap and shoulder belts used, child restraint used, restraint failure, and helmet worn.

5-Year Trend - Restraint Use Among Drivers

Restraint Use	2017			2018			2019			2020			2021		
	Drivers	Fatal Drivers	Injured Drivers	Drivers	Fatal Drivers	Injured Drivers	Drivers	Fatal Drivers	Injured Drivers	Drivers	Fatal Drivers	Injured Drivers	Drivers	Fatal Drivers	Injured Drivers
No Belts Available	82	2	12	91	1	13	90	0	18	99	1	15	127	1	16
Shoulder Belt Only Used	259	1	44	228	0	23	227	2	22	220	0	26	278	0	30
Lap Belt Only Used	115	1	13	112	0	16	97	0	14	53	0	5	86	0	13
Both Lap & Shoulder Belt Used	39,117	37	4,084	39,191	30	3,907	40,621	41	3,850	31,357	38	3,182	37,857	40	3,871
No Belts Used	299	20	118	265	19	129	251	28	96	267	19	125	286	28	151
Child Restraint Used - Forward Facing	3	0	0	2	0	0	0	0	0	0	0	0	0	0	0
Child Restraint Not Used, Unavailable or Improper Use	0	0	0	0	0	0	0	0	0	0	0	0	0	0	0
Child Restraint Used - Rear Facing	0	0	0	0	0	0	0	0	0	0	0	0	0	0	0
Child Restraint Used - Booster Seat	1	0	0	0	0	0	0	0	0	0	0	0	0	0	0
Restraint Failure	22	0	4	8	0	1	15	1	2	12	0	1	15	0	4
Restraint Use Unknown	4,883	10	277	5,115	16	255	5,211	10	246	4,990	12	222	6,095	11	326
Helmet Worn	238	8	165	204	9	146	190	5	138	205	6	158	216	11	154
Helmet Not Worn	165	8	123	145	7	115	166	7	130	187	10	140	197	16	151
Helmet Use Unknown	26	1	13	19	1	11	23	0	12	27	5	12	23	1	14
Uncoded & Errors	116	0	1	96	0	0	22	0	0	4	0	0	6	0	0
Total	45,326	88	4,854	45,476	83	4,616	46,913	94	4,528	37,421	91	3,886	45,186	108	4,730

5-Year Trend - Restraint Use Among Drivers Coded Drinking

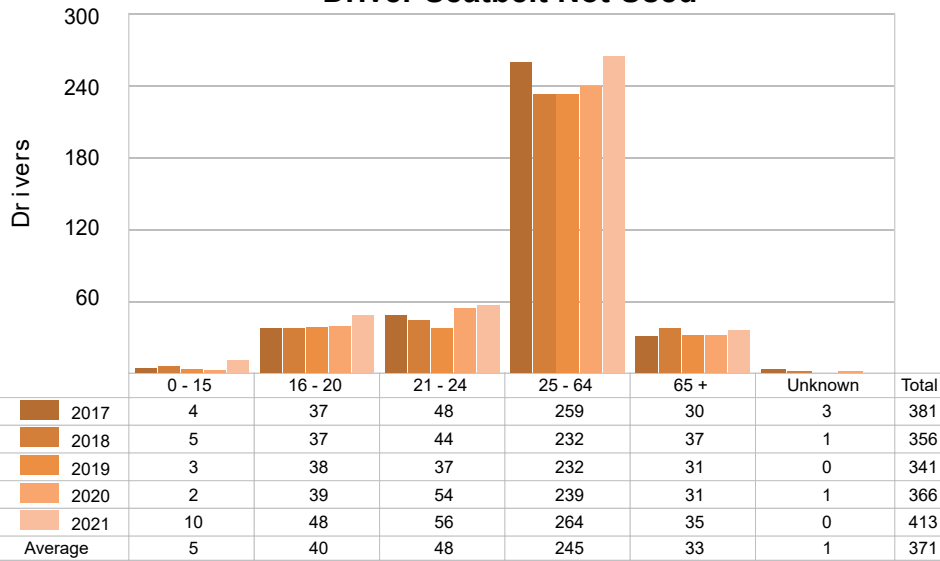
Restraint Use	2017			2018			2019			2020			2021		
	Drivers	Fatal Drivers	Injured Drivers	Drivers	Fatal Drivers	Injured Drivers	Drivers	Fatal Drivers	Injured Drivers	Drivers	Fatal Drivers	Injured Drivers	Drivers	Fatal Drivers	Injured Drivers
No Belts Available	3	0	2	2	0	1	3	0	2	4	0	3	3	0	2
Shoulder Belt Only Used	5	1	3	4	0	1	1	0	0	6	0	2	8	0	1
Lap Belt Only Used	4	0	0	2	0	1	1	0	1	2	0	2	2	0	1
Both Lap & Shoulder Belt Used	815	10	249	730	5	229	728	8	197	733	3	240	765	11	225
No Belts Used	69	12	40	56	6	37	56	12	32	51	6	31	64	12	41
Child Restraint Used - Forward Facing	0	0	0	0	0	0	0	0	0	0	0	0	0	0	0
Child Restraint Not Used, Unavailable or Improper Use	0	0	0	0	0	0	0	0	0	0	0	0	0	0	0
Child Restraint Used - Rear Facing	0	0	0	0	0	0	0	0	0	0	0	0	0	0	0
Child Restraint Used - Booster Seat	1	0	0	0	0	0	0	0	0	0	0	0	0	0	0
Restraint Failure	0	0	0	1	0	1	1	0	0	1	0	0	0	0	0
Restraint Use Unknown	233	3	83	204	3	73	208	4	59	230	5	61	203	3	66
Helmet Worn	13	3	8	5	1	4	10	0	10	8	0	7	8	1	6
Helmet Not Worn	36	4	29	24	4	18	27	3	24	21	2	13	21	6	13
Helmet Use Unknown	3	1	2	3	0	3	3	0	2	6	2	3	1	0	0
Uncoded & Errors	0	0	0	0	0	0	0	0	0	0	0	0	0	0	0
Total	1,182	34	416	1,031	19	368	1,038	27	327	1,062	18	362	1,075	33	355

5-Year Trend - Seatbelt Not Used Among Drivers by Age

Age Group	2017			2018			2019			2020			2021		
	Drivers	Fatal Drivers	Injured Drivers	Drivers	Fatal Drivers	Injured Drivers	Drivers	Fatal Drivers	Injured Drivers	Drivers	Fatal Drivers	Injured Drivers	Drivers	Fatal Drivers	Injured Drivers
0 - 15	4	0	2	5	0	2	3	0	1	2	0	0	10	0	3
16 - 20	37	1	13	37	2	17	38	0	17	39	1	21	48	1	24
21 - 24	48	6	19	44	1	21	37	3	16	54	0	23	56	5	23
25 - 64	259	13	86	232	13	89	232	23	73	239	16	85	264	17	104
65 +	30	2	10	37	4	13	31	2	7	31	3	10	35	6	13
Unknown	3	0	0	1	0	0	0	0	0	1	0	1	0	0	0
Total	381	22	130	356	20	142	341	28	114	366	20	140	413	29	167

Note: Seatbelt Not Used includes no belts available or no belts used.

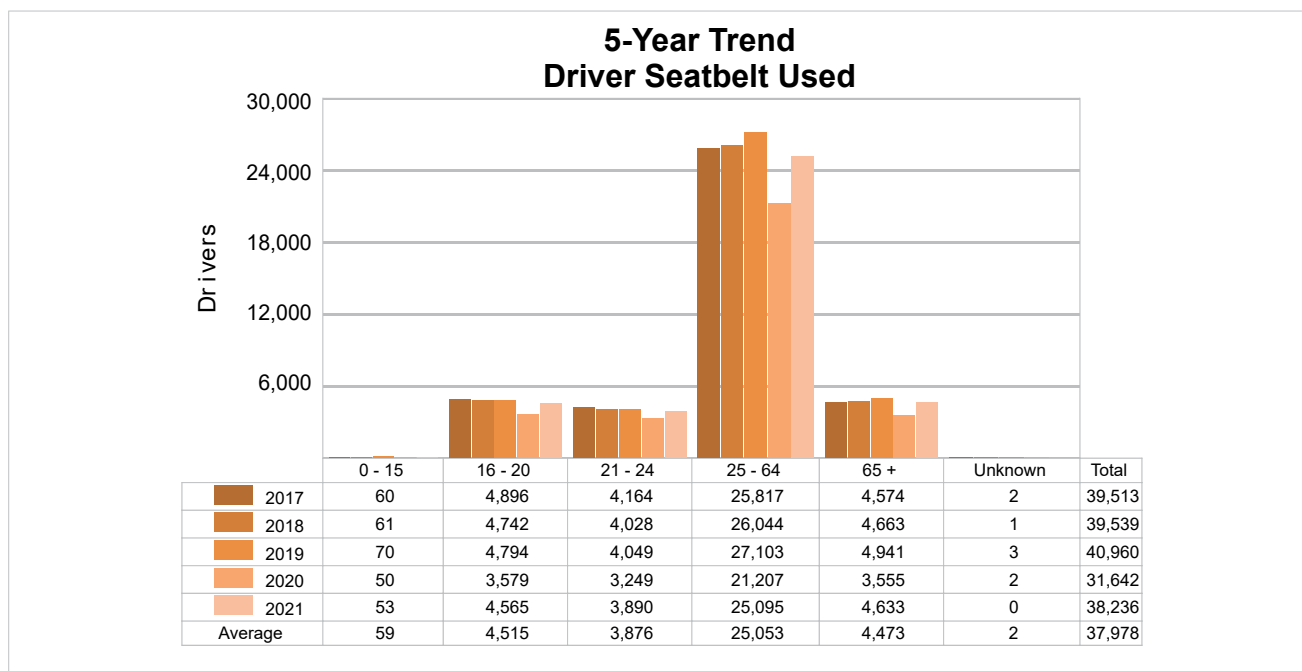
5-Year Trend Driver Seatbelt Not Used



5-Year Trend - Seatbelt Used Among Drivers by Age

Age Group	2017			2018			2019			2020			2021		
	Drivers	Fatal Drivers	Injured Drivers	Drivers	Fatal Drivers	Injured Drivers	Drivers	Fatal Drivers	Injured Drivers	Drivers	Fatal Drivers	Injured Drivers	Drivers	Fatal Drivers	Injured Drivers
0 - 15	60	0	11	61	0	8	70	0	10	50	0	6	53	0	6
16 - 20	4,896	1	516	4,742	0	487	4,794	2	462	3,579	2	380	4,565	4	476
21 - 24	4,164	3	453	4,028	2	432	4,049	4	420	3,249	4	325	3,890	2	416
25 - 64	25,817	28	2,600	26,044	17	2,481	27,103	23	2,486	21,207	23	2,076	25,095	25	2,454
65 +	4,574	7	565	4,663	11	539	4,941	15	509	3,555	9	426	4,633	9	566
Unknown	2	0	0	1	0	0	3	0	1	2	0	1	0	0	0
Total	39,513	39	4,145	39,539	30	3,947	40,960	44	3,888	31,642	38	3,214	38,236	40	3,918

Note: Seatbelt Used includes shoulder belt only used, lap belt only used, both lap and shoulder belts used, and restraint failure.



5-Year Trend - Drivers in Crashes by Hazardous Action

Hazardous Action	2017		2018		2019		2020		2021	
	Total Drivers in Crashes	Drivers in Fatal Crashes	Total Drivers in Crashes	Drivers in Fatal Crashes	Total Drivers in Crashes	Drivers in Fatal Crashes	Total Drivers in Crashes	Drivers in Fatal Crashes	Total Drivers in Crashes	Drivers in Fatal Crashes
None	23,992	85	24,503	70	25,445	74	20,812	77	24,965	89
Speed Too Fast	4,195	22	4,093	27	4,354	24	2,691	22	3,200	29
Speed Too Slow	44	1	47	1	31	1	20	0	19	0
Failed to Yield	3,782	8	3,751	17	3,784	9	3,088	17	3,885	19
Disregard Traffic Control	792	12	836	8	776	11	742	10	873	7
Drove Wrong Way	27	1	27	0	24	0	28	1	24	0
Drove Left of Center	253	7	293	5	310	10	294	9	306	9
Improper Passing	212	0	248	1	256	0	211	1	279	2
Improper Lane Use	859	1	853	1	858	3	642	3	966	4
Improper Turn	457	2	454	0	435	0	416	2	481	2
Improper/No Signal	40	0	38	0	44	0	31	0	44	1
Improper Backing	600	1	633	0	566	0	460	0	519	0
Unable to Stop in Assured Clear Distance	4,932	5	4,757	6	4,819	5	3,410	5	4,318	7
Other	1,680	11	1,594	5	1,758	8	1,417	9	1,612	15
Unknown	1,693	16	1,772	18	2,036	32	1,869	27	2,324	37
Reckless Driving	292	8	251	9	247	2	266	8	253	8
Careless/Negligent Driving	1,441	16	1,291	14	1,158	12	1,022	7	1,116	8
Uncoded & Errors	35	1	35	0	12	1	2	0	2	0
Total	45,326	197	45,476	182	46,913	192	37,421	198	45,186	237

Office of Highway Safety Planning

Physical Address:
7150 Harris Drive
Dimondale, Michigan 48821

Mailing Address:
P.O. Box 30634
Lansing, Michigan 48909

Find us on the web:
MichiganTrafficCrashFacts.org
mtcf-info@umich.edu

