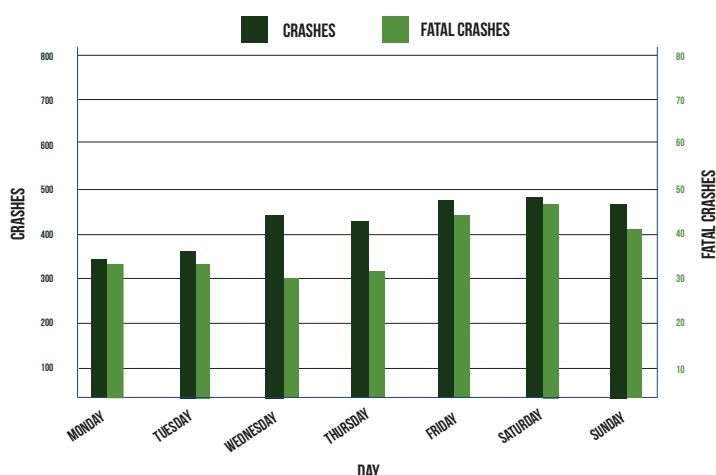


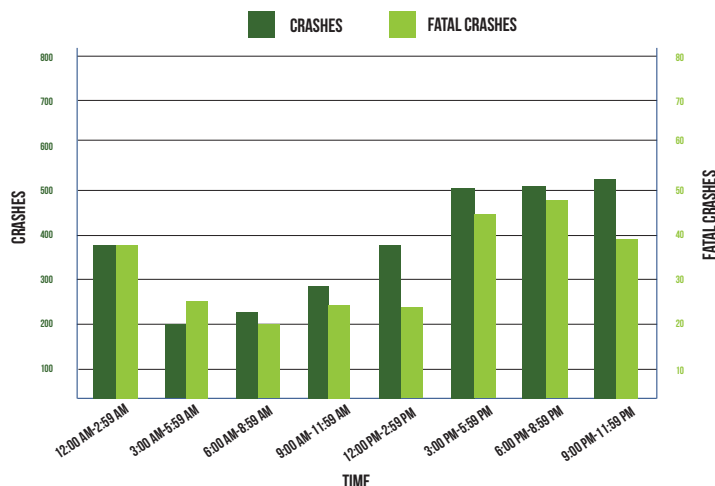
2021

A crash is drug-involved if any driver, pedestrian, or cyclist involved was reported as suspected of drug use by the police officer on the Traffic Crash Report.

DRUG-INVOLVED CRASHES BY DAY OF THE WEEK



DRUG-INVOLVED CRASHES BY TIME OF DAY



Of the 1,068 fatal crashes that occurred in Michigan, 259 (24.3%) were drug-involved, with at least one drugged operator, bicyclist, or pedestrian.

Of the 259 fatal drug-involved crashes, 132 (51.0%) involved only one vehicle.

Alcohol was involved in 120 (46.3%) of the 259 fatal drug-involved crashes.

Saturday had the highest number of drug-involved fatal crashes at 47, followed by Friday with 44.

There were 275 drug-involved fatalities, which accounts for 24.3% of the total of number of people killed (1,131).

Of the 183 pedestrian deaths, 27 (14.8%) were drug-involved and 10 (37.0%) of those pedestrians were suspected of drug use.

There were 166 motorcyclist deaths, and 38 (22.9%) of those deaths were the result of a drug-involved crash. Of the 38 drug-involved motorcyclist crash deaths, 25 (65.8%) motorcycle operators were coded as drugs suspected.

Of the 256 motor-vehicle drivers suspected of drugs who were involved in fatal crashes, 208 were male and 48 were female.

Eighty-nine (34.8%) of the 256 drivers suspected of drugs who were involved in fatal crashes were between the ages of 20 and 29.

Seventy-seven (30.1%) of the drivers were between age 30 and 39.