

MTCF

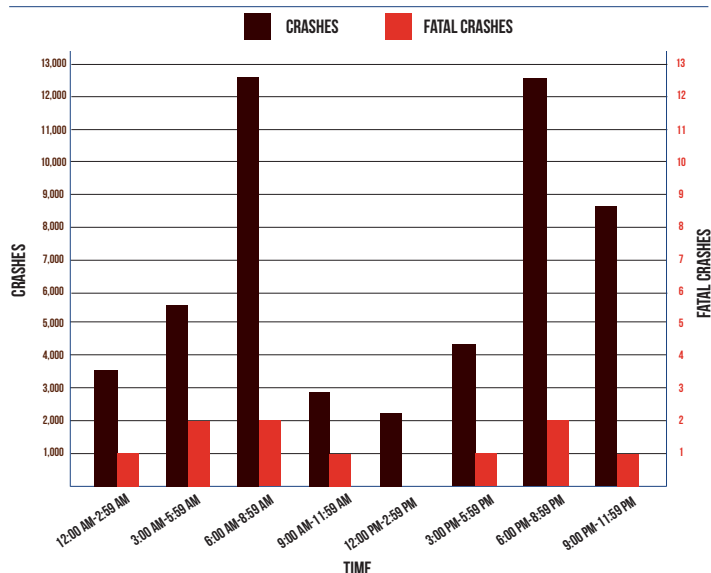
Michigan Traffic Crash Facts

DEER

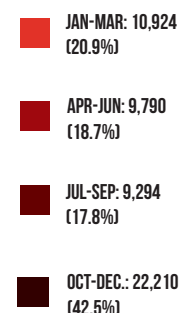
2021

Deer crashes include situations where a deer is a contributing factor but does not necessarily come in contact with a traffic unit.

MOTOR VEHICLE-DEER CRASHES BY TIME OF DAY



MOTOR VEHICLE-DEER CRASHES BY TIME OF YEAR



Michigan had 52,218 (18.5% of the total crashes) motor vehicle-deer crashes.

Passenger cars, SUVs, and vans represented 78.5 percent (41,154) of the vehicles involved in vehicle-deer crashes.

As a result of vehicle-deer crashes, 1,449 people were injured and 10 people were killed. Four (40.0%) of those killed were occupants in passenger vehicles and six (60.0%) killed were motorcyclists.

Motor vehicle-deer involved crashes were highest during the 7:00-7:59 AM time period (5,484).

The top 10 counties experiencing vehicle-deer crashes were: Oakland (1,853); Kent (1,810); Jackson (1,544); Ottawa (1,391); Lapeer (1,355); Allegan (1,288); Genesee (1,254); Calhoun (1,247); Kalamazoo (1,137); and Clinton (1,116).

The highest number of vehicle-deer crashes occurred during November (9,093).

Of the motor vehicle-deer crashes, 22,210 (42.5%) occurred during the fourth quarter of the year.