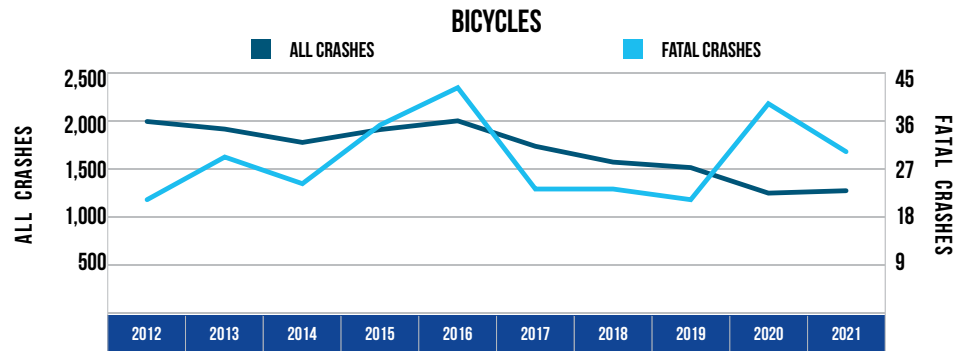


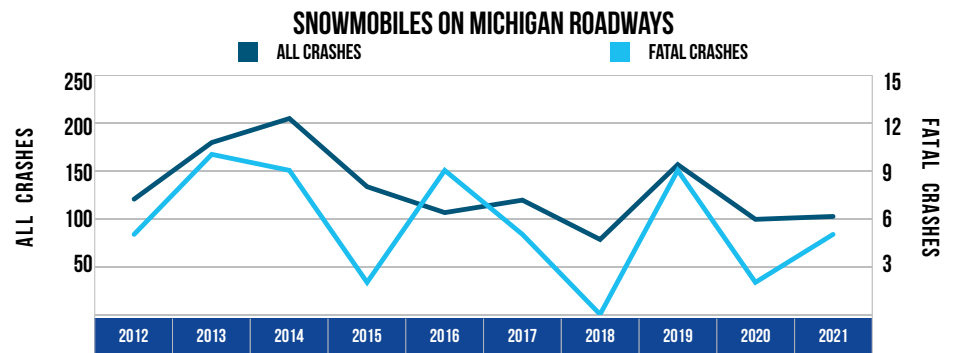
## 10 YEAR TRENDS-STATEWIDE (CONTINUED)

BICYCLES		
Year	All Crashes	Fatal Crashes
2012	1,981	21
2013	1,902	29
2014	1,763	24
2015	1,897	35
2016	1,988	42
2017	1,723	23
2018	1,558	23
2019	1,501	21
2020	1,235	39
2021	1,260	30



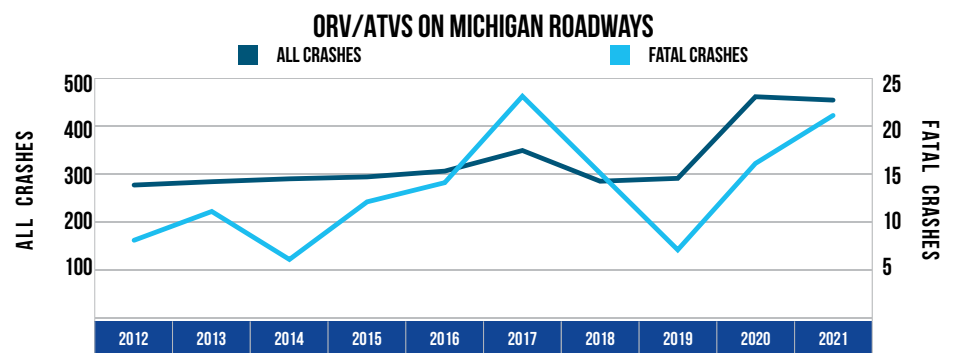
There were 1,260 bicycles involved in crashes in 2021, down 36.4 percent from 2012. There were 30 bicycles involved in fatal crashes in 2021, up 42.9 percent from 2012.

SNOWMOBILES ON MICHIGAN ROADWAYS		
Year	All Crashes	Fatal Crashes
2012	120	5
2013	179	10
2014	204	9
2015	133	2
2016	106	9
2017	119	5
2018	78	0
2019	156	9
2020	99	2
2021	102	5



There were 102 snowmobiles in crashes on roadways in 2021, down 15.0 percent from 2012. There were five snowmobiles in fatal crashes, a 0.0 percent change from 2012.

ORV/ATVS ON MICHIGAN ROADWAYS		
Year	All Crashes	Fatal Crashes
2012	275	8
2013	282	11
2014	288	6
2015	292	12
2016	304	14
2017	347	23
2018	283	15
2019	289	7
2020	459	16
2021	452	21



There were 452 ORV/ATVs in crashes on roadways in 2021, up 64.4 percent from 2012. There were 21 ORV/ATVs in fatal crashes, up 162.5 percent from 2012.