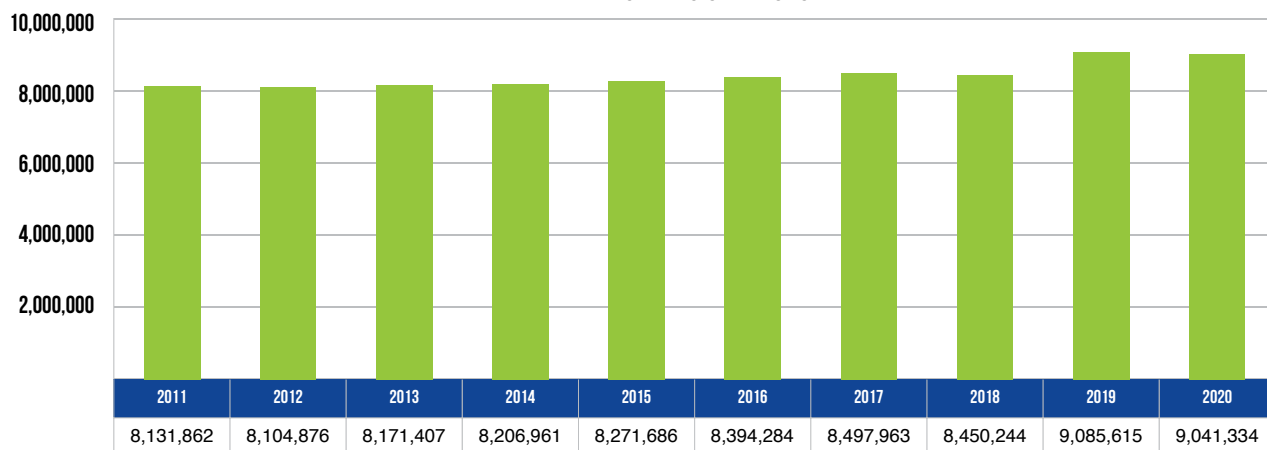


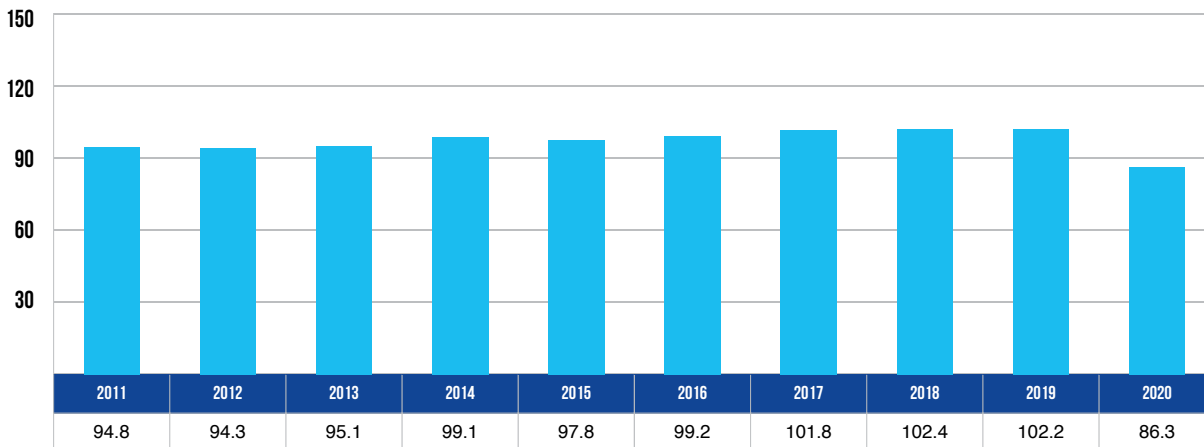
10 YEAR TRENDS-STATEWIDE

VEHICLE REGISTRATIONS



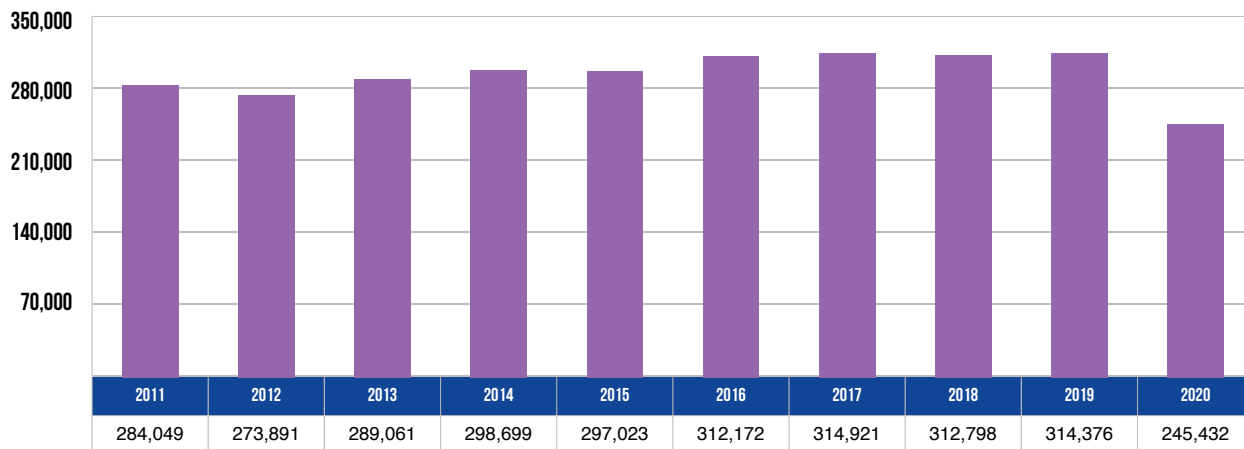
Vehicle registrations increased 11.2 percent over the 10-year period.

VEHICLE MILES TRAVELED (BILLIONS)



Vehicle miles traveled decreased 8.9 percent over the 10-year period.

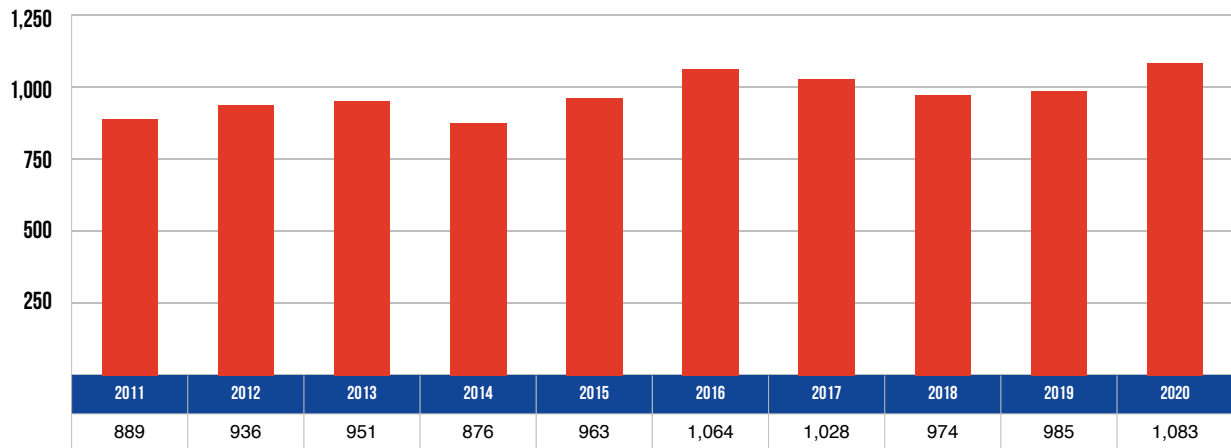
CRASHES



There were 245,432 total crashes statewide in 2020--a 13.6 percent decrease from 2011.

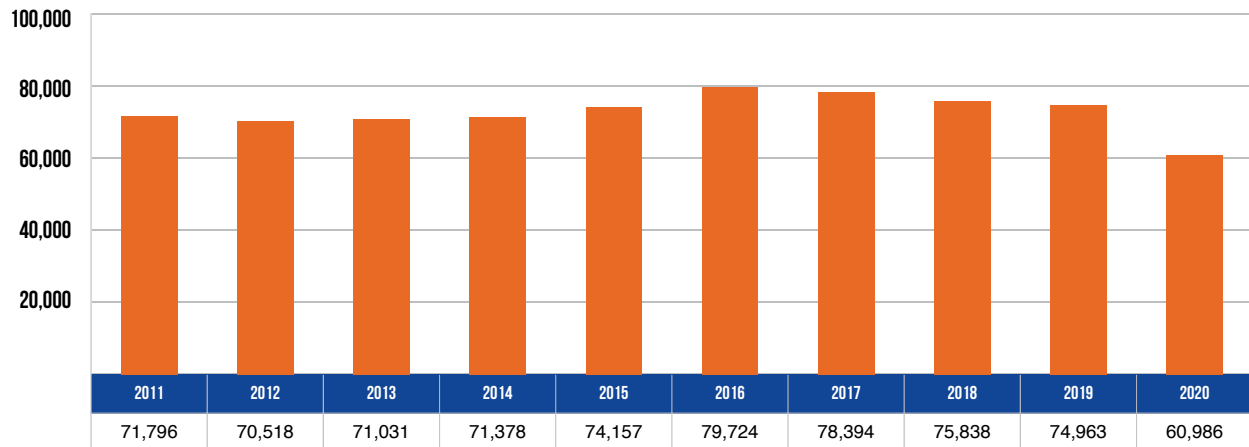
10 YEAR TRENDS-STATEWIDE (CONTINUED)

DEATHS



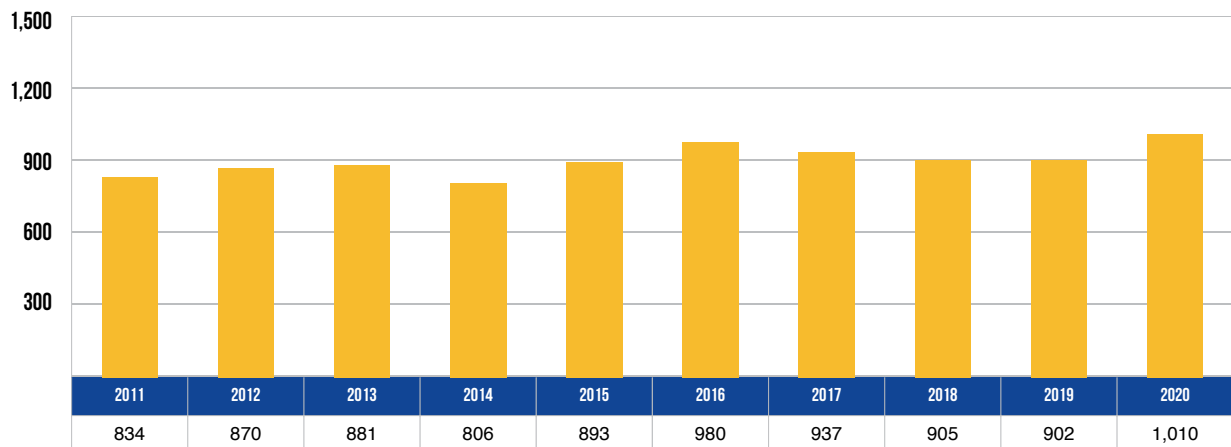
In 2020, 1,083 people died in motor vehicle crashes--an increase of 21.8 percent from 2011.

INJURIES



In 2020, 60,986 people received injuries in motor vehicle crashes--down 15.1 percent from 71,796 in 2011.

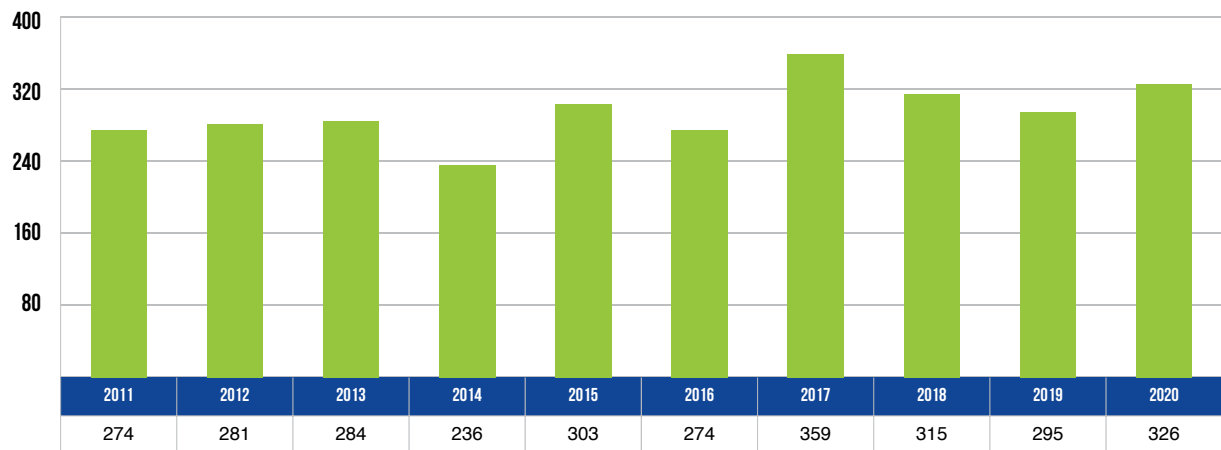
FATAL CRASHES



In 2020, there were 1,010 fatal crashes--up 21.1 percent from 834 in 2011.

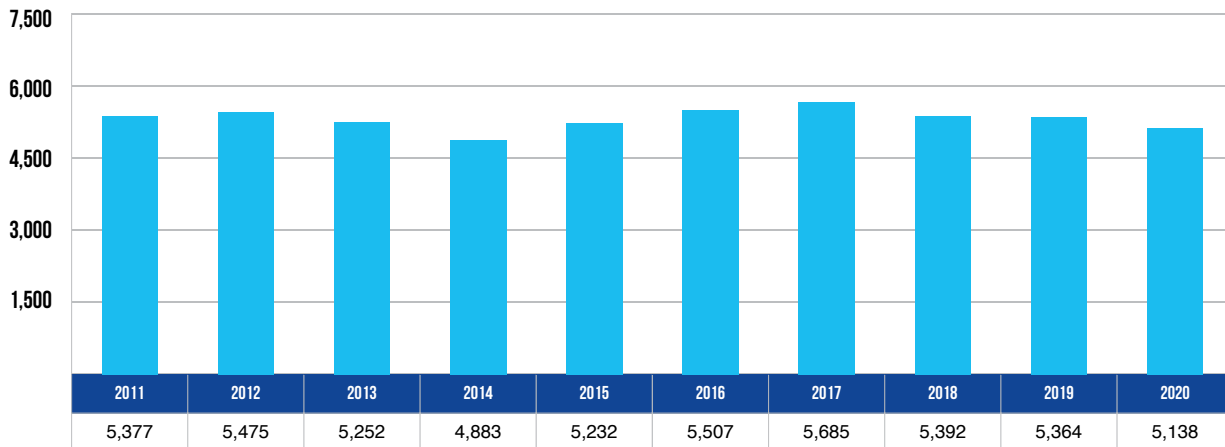
10 YEAR TRENDS-STATEWIDE (CONTINUED)

ALCOHOL-INVOLVED DEATHS



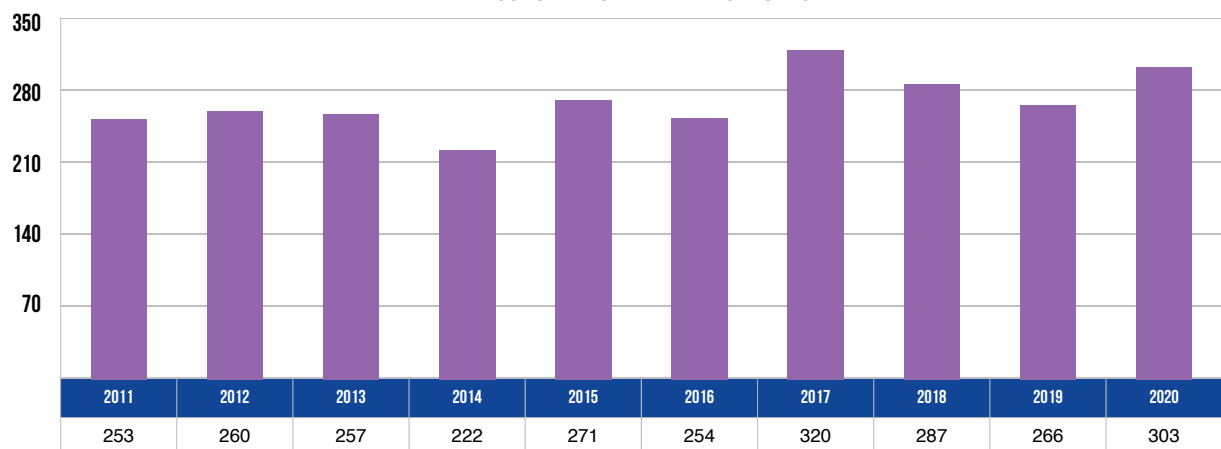
There were 326 deaths in alcohol-involved crashes in 2020--up 19.0 percent from 274 in 2011.

ALCOHOL-INVOLVED INJURIES



There were 5,138 injuries in alcohol-involved crashes in 2020--down 4.4 percent from 2011.

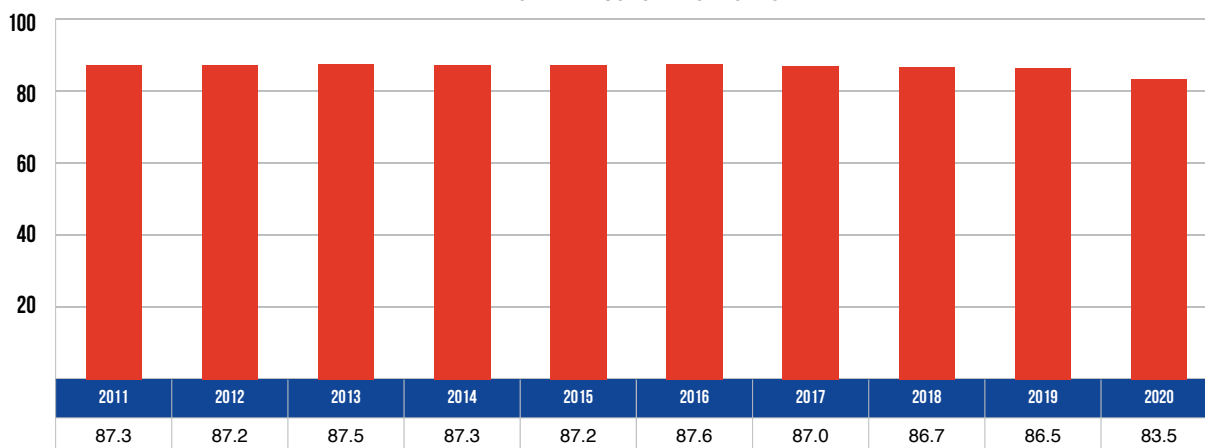
ALCOHOL-INVOLVED FATAL CRASHES



There were 303 alcohol-involved fatal crashes--up 19.8 percent from 253 in 2011.

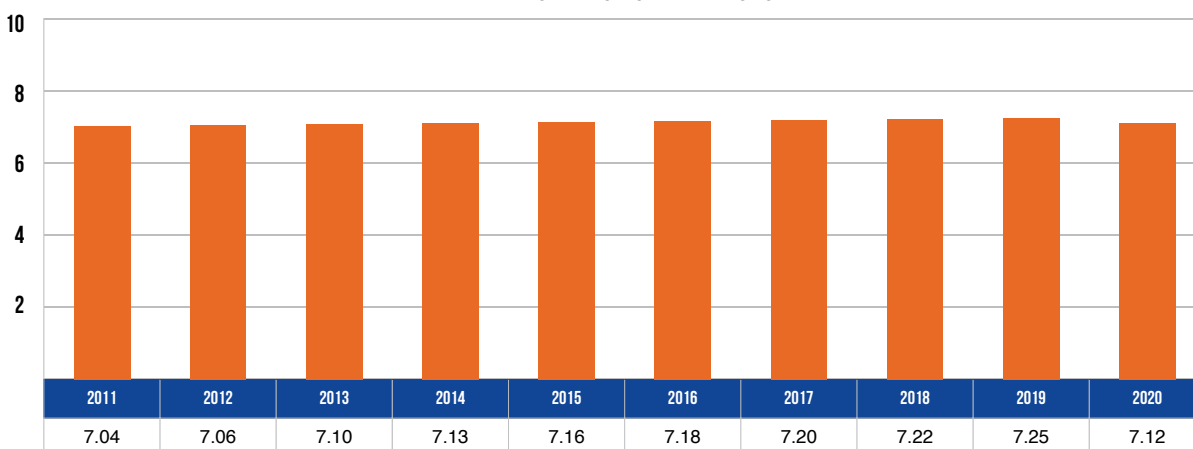
10 YEAR TRENDS-STATEWIDE (CONTINUED)

RESTRAINT USAGE IN CRASHES



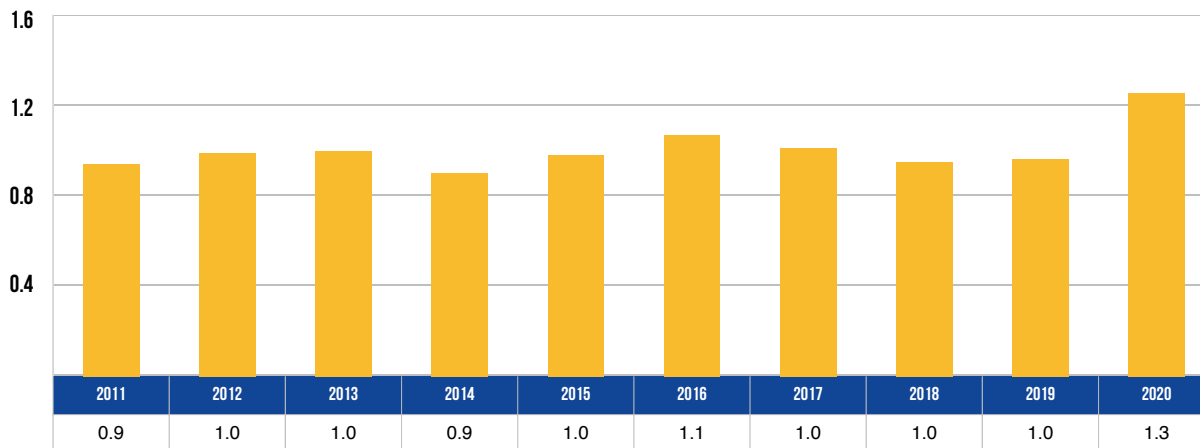
The percentage of motor vehicle occupants using restraints as reported by police in traffic crashes was 83.5 percent in 2020, down 4.4 percent from 2011.

DRIVERS IN MICHIGAN (MILLIONS)



There were 7,118,197 licensed drivers on Michigan roadways in 2020--an increase of 1.1 percent from 2011.

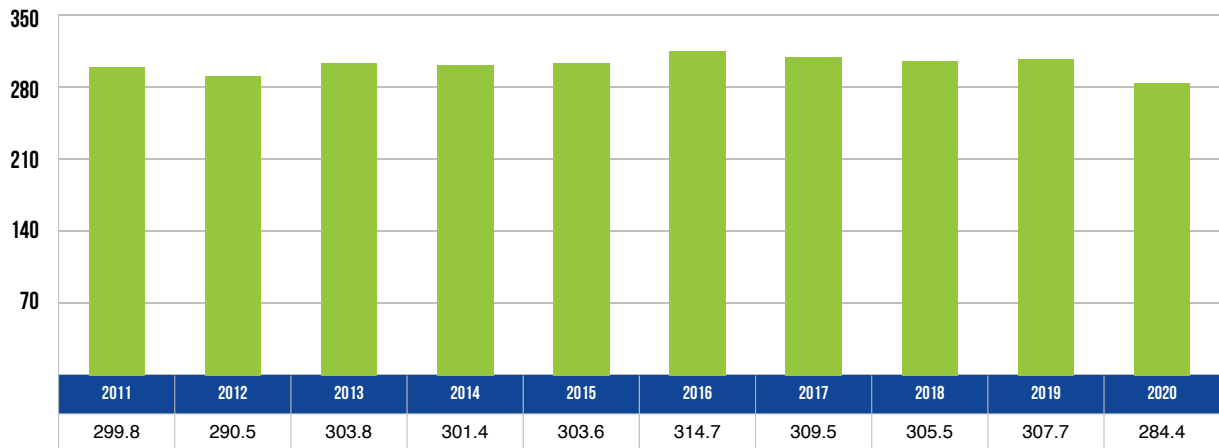
FATALITIES PER 100 MILLION VEHICLE MILES TRAVELED



The death rate of 1.255 fatalities per 100 million VMT in 2020 was an increase of 33.5% from the death rate of 0.940 in 2011.

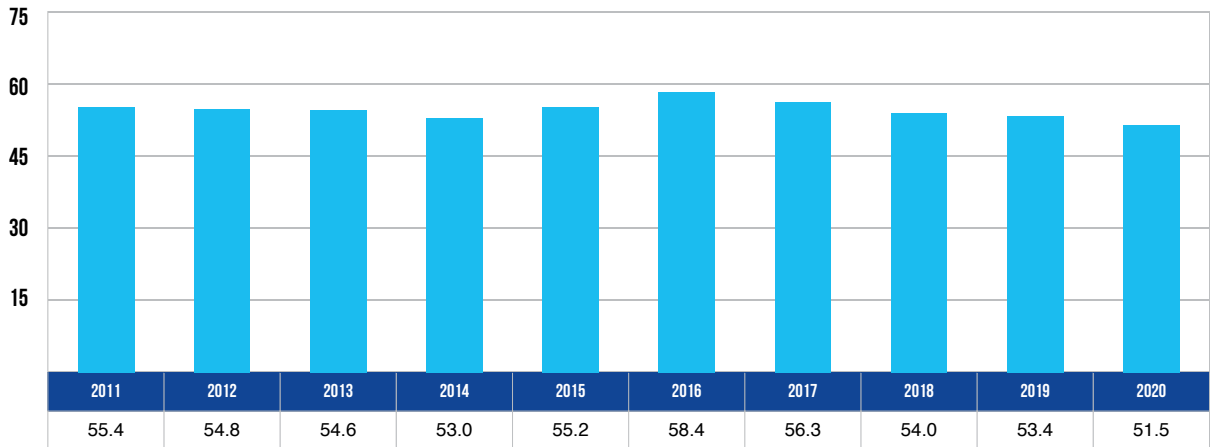
10 YEAR TRENDS-STATEWIDE (CONTINUED)

TOTAL CRASHES PER 100 MILLION VEHICLE MILES TRAVELED



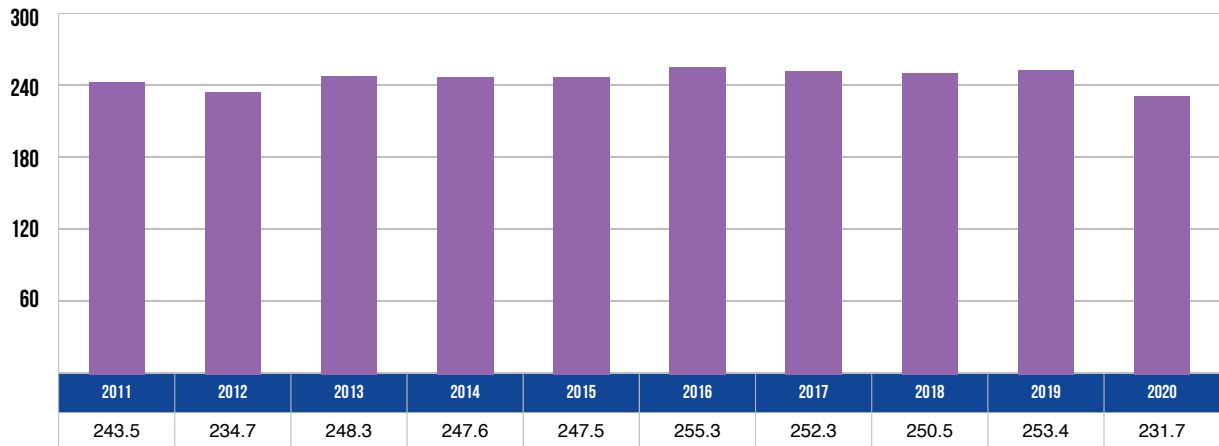
The total crash rate of 284.4 crashes in 2020 was a 5.2 percent decrease from 2011.

INJURY CRASHES PER 100 MILLION VEHICLE MILES TRAVELED



The injury crash rate of 51.5 crashes in 2020 was a 7.1 percent decrease from 2011.

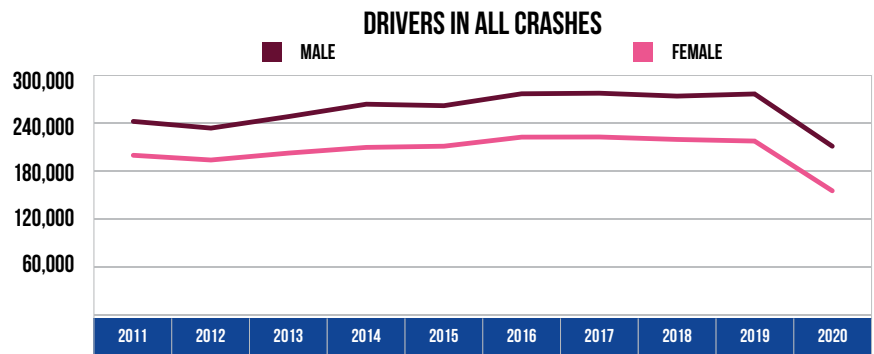
PROPERTY DAMAGE CRASHES PER 100 MILLION VEHICLE MILES TRAVELED



The property damage crash rate of 231.7 crashes in 2020 was a 4.8 percent decrease from 2011.

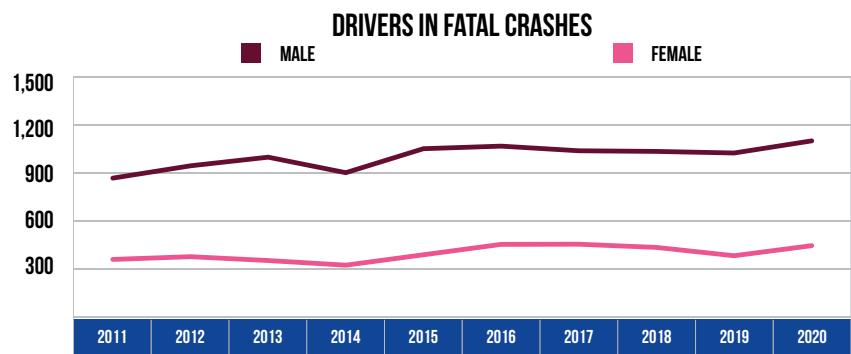
10 YEAR TRENDS-STATEWIDE (CONTINUED)

DRIVERS IN ALL CRASHES		
Year	Male	Female
2011	240,850	198,488
2012	232,475	192,605
2013	246,908	201,264
2014	262,359	208,359
2015	260,508	209,843
2016	275,382	221,200
2017	276,112	221,365
2018	272,480	218,294
2019	275,180	216,274
2020	209,816	154,100



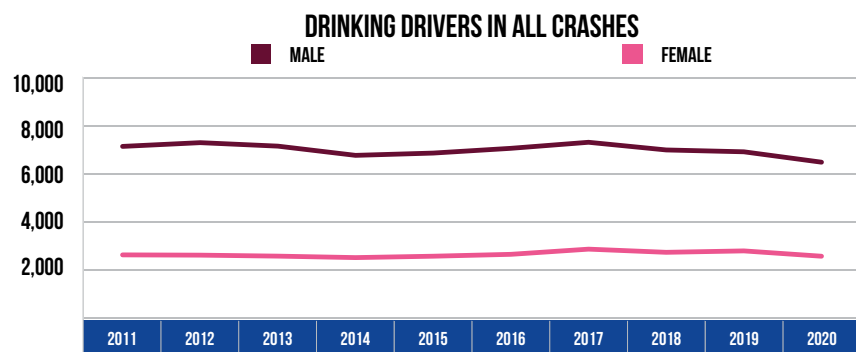
Male drivers accounted for 57.7 percent of all drivers in crashes during 2020, which was up slightly from 54.8 percent in 2011. Female drivers accounted for 42.3 percent of all drivers in crashes during 2020, which was down slightly from 45.2 percent in 2011.

DRIVERS IN FATAL CRASHES		
Year	Male	Female
2011	859	351
2012	936	368
2013	990	344
2014	893	315
2015	1,043	380
2016	1,059	445
2017	1,030	446
2018	1,026	426
2019	1,016	374
2020	1,092	437



Male drivers made up 71.4 percent of all drivers in fatal crashes in 2020, which was up from 71.0 percent in 2011. Female drivers made up 28.6 percent of all drivers in fatal crashes in 2020, which was down from 29.0 percent in 2011.

DRINKING DRIVERS IN ALL CRASHES		
Year	Male	Female
2011	7,094	2,574
2012	7,250	2,563
2013	7,105	2,522
2014	6,721	2,461
2015	6,816	2,519
2016	7,014	2,597
2017	7,266	2,813
2018	6,946	2,681
2019	6,869	2,740
2020	6,436	2,518



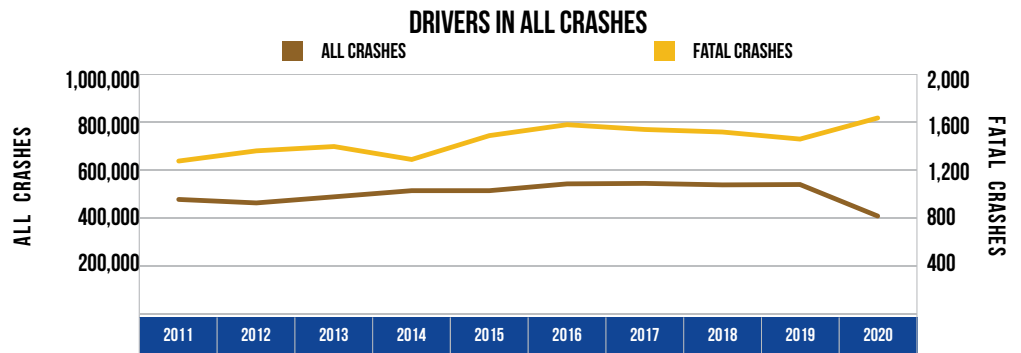
In 2020, males represented 71.9 percent of all drinking drivers, which was down from 73.4 percent in 2011. Females represented 28.1 percent of all drinking drivers in 2020, which was up from 26.6 percent in 2011.

Note: 40,370 drivers in all crashes, 97 drivers in fatal crashes, and two drinking drivers were coded as unknown gender in 2020 and are not included in the tables.

10 YEAR TRENDS-STATEWIDE (CONTINUED)

DRIVERS IN ALL CRASHES

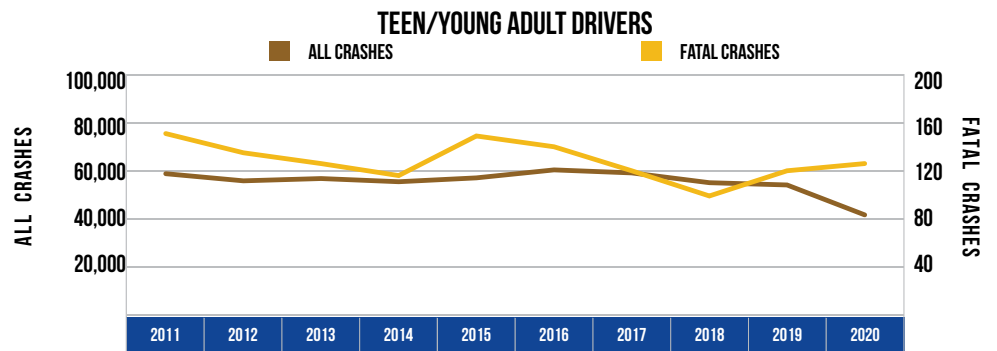
Year	All Crashes	Fatal Crashes
2011	473,501	1,267
2012	459,030	1,352
2013	484,446	1,388
2014	510,086	1,280
2015	510,074	1,479
2016	538,412	1,570
2017	540,387	1,530
2018	534,223	1,509
2019	535,721	1,450
2020	404,286	1,626



The number of drivers involved in all crashes decreased 14.6 percent over the 10-year period. The number of drivers involved in fatal crashes increased 28.3 percent over the 10-year period.

TEEN/YOUNG ADULT DRIVERS (AGE 16-20)

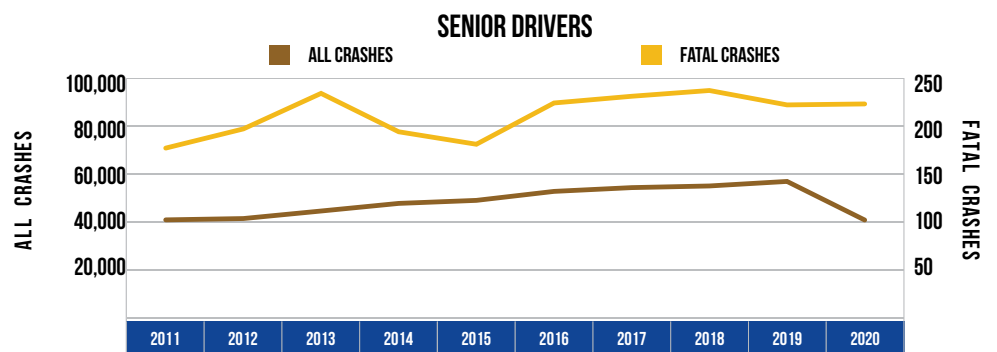
Year	All Crashes	Fatal Crashes
2011	58,279	150
2012	55,307	134
2013	56,264	125
2014	54,935	115
2015	56,544	148
2016	59,865	139
2017	58,607	119
2018	54,530	98
2019	53,586	119
2020	41,119	125



Teen/young adult drivers (age 16-20) represented 6.1 percent of the licensed drivers in 2020. The number of teen/young adult drivers in all crashes has decreased by 29.4 percent since 2011. Their involvement in fatal crashes has decreased 16.7 percent during the same time period.

SENIOR DRIVERS (AGE 65 & OVER)

Year	All Crashes	Fatal Crashes
2011	40,495	176
2012	41,047	196
2013	44,183	233
2014	47,356	193
2015	48,615	180
2016	52,362	223
2017	53,934	230
2018	54,621	236
2019	56,515	221
2020	40,432	222

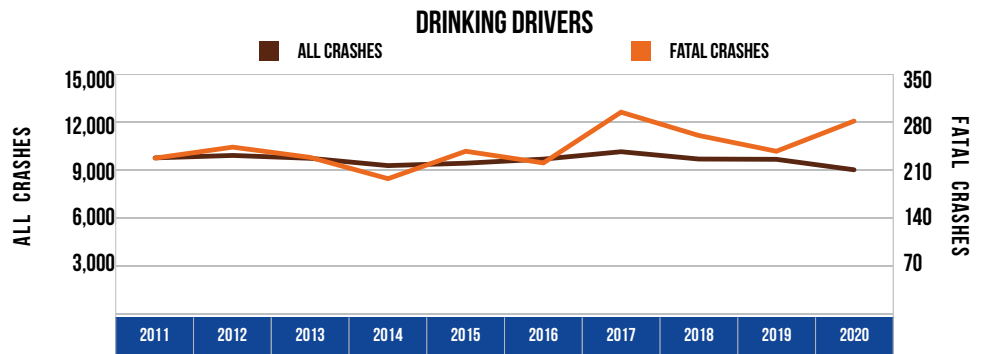


Senior drivers (age 65 and over) represented 22.5 percent of the licensed drivers in 2020. The number of drivers age 65 and over in all crashes has decreased 0.2 percent since 2011. Senior driver involvement in fatal crashes increased 26.1 percent during the same time period.

10 YEAR TRENDS-STATEWIDE (CONTINUED)

DRINKING DRIVERS

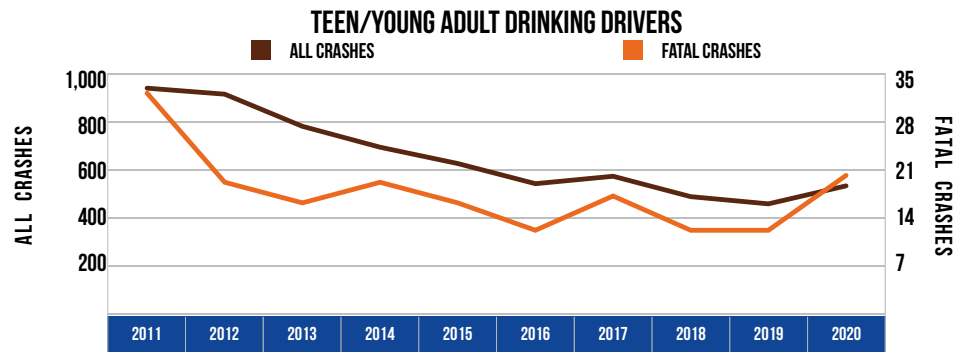
Year	All Crashes	Fatal Crashes
2011	9,701	226
2012	9,853	242
2013	9,673	227
2014	9,218	196
2015	9,368	236
2016	9,623	219
2017	10,085	293
2018	9,628	259
2019	9,610	236
2020	8,956	280



Drinking driver involvement in all crashes decreased by 7.7 percent from 2011. Drinking driver involvement in fatal crashes increased by 23.9 percent from 2011.

TEEN/YOUNG ADULT DRINKING DRIVERS (AGE 16-20)

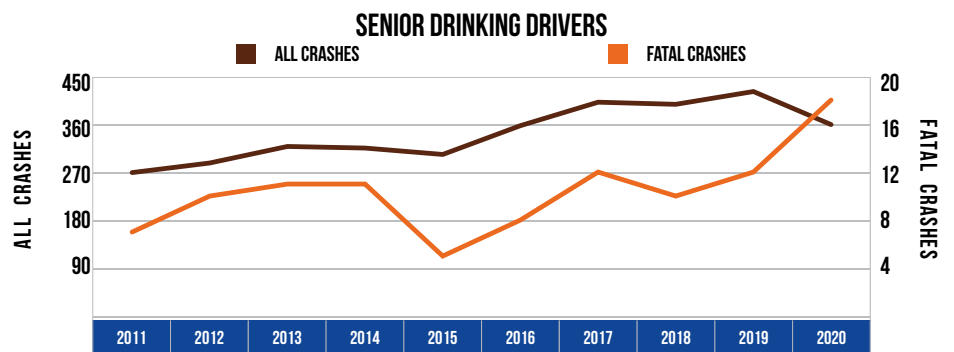
Year	All Crashes	Fatal Crashes
2011	935	32
2012	910	19
2013	776	16
2014	689	19
2015	621	16
2016	537	12
2017	568	17
2018	483	12
2019	453	12
2020	528	20



The number of teen/young adult drinking drivers (age 16-20) in all crashes decreased by 43.5 percent, and their involvement in fatal crashes decreased by 37.5 percent from 2011.

SENIOR DRINKING DRIVERS (AGE 65 & OVER)

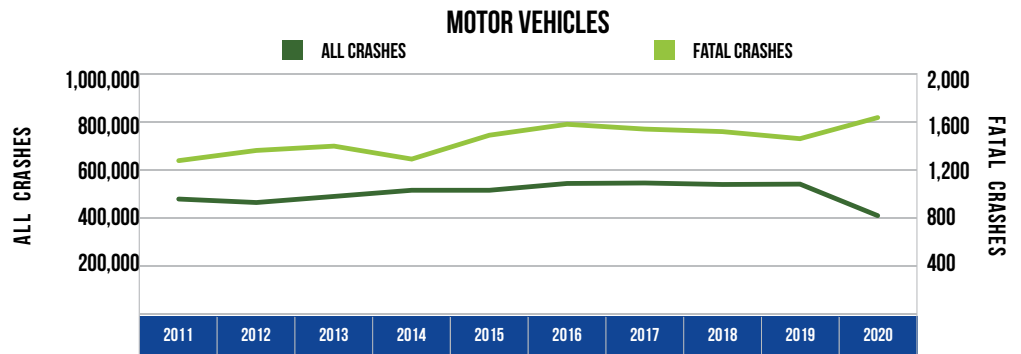
Year	All Crashes	Fatal Crashes
2011	269	7
2012	287	10
2013	318	11
2014	315	11
2015	303	5
2016	357	8
2017	401	12
2018	397	10
2019	421	12
2020	359	18



The number of senior drinking drivers (age 65 and over) in all crashes increased by 33.5 percent from 2011. Their involvement in fatal crashes increased by 157.1 percent from 2011.

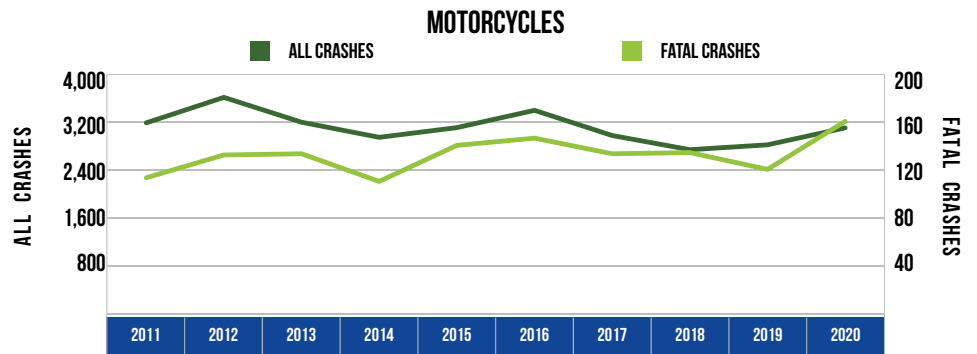
10 YEAR TRENDS-STATEWIDE (CONTINUED)

MOTOR VEHICLES		
Year	All Crashes	Fatal Crashes
2011	473,501	1,267
2012	459,030	1,352
2013	484,446	1,388
2014	510,086	1,280
2015	510,074	1,479
2016	538,412	1,570
2017	540,387	1,530
2018	534,223	1,509
2019	535,721	1,450
2020	404,286	1,626



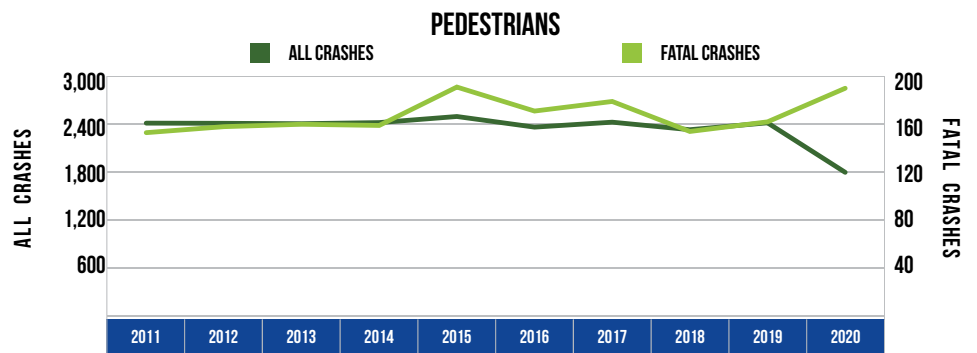
There were 404,286 motor vehicles involved in all crashes in 2020, down 14.6 percent from 2011. There were 1,626 motor vehicles involved in fatal crashes in 2020, up 28.3 percent from 2011.

MOTORCYCLES		
Year	All Crashes	Fatal Crashes
2011	3,175	113
2012	3,600	132
2013	3,186	133
2014	2,934	110
2015	3,096	140
2016	3,384	146
2017	2,964	133
2018	2,728	134
2019	2,809	120
2020	3,092	160



There were 3,092 motorcycles involved in crashes in 2020, a 2.6 percent decrease from 2011. There were 160 motorcycles involved in fatal crashes in 2020, up 41.6 percent from 2011.

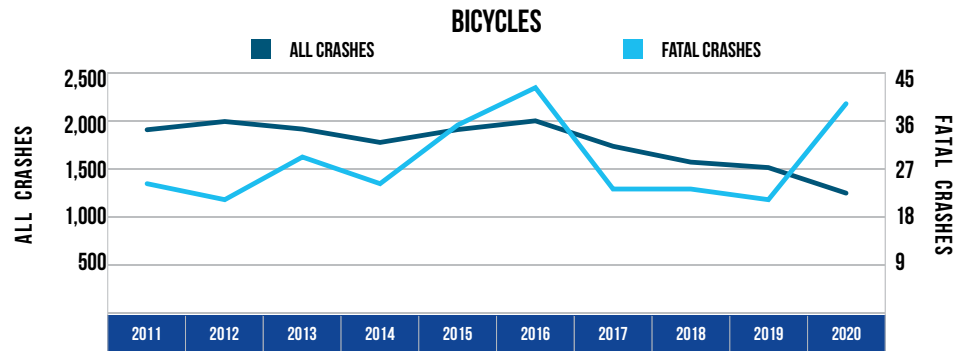
PEDESTRIANS		
Year	All Crashes	Fatal Crashes
2011	2,399	152
2012	2,397	157
2013	2,392	159
2014	2,406	158
2015	2,482	190
2016	2,349	170
2017	2,411	178
2018	2,317	153
2019	2,403	161
2020	1,784	189



There were 1,784 pedestrians involved in crashes in 2020, down 25.6 percent from 2011. There were 189 pedestrians involved in fatal crashes in 2020, up 24.3 percent from 2011.

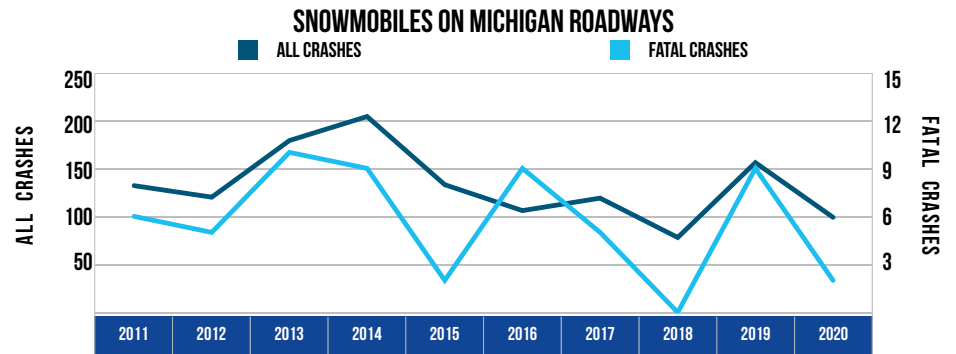
10 YEAR TRENDS-STATEWIDE (CONTINUED)

BICYCLES		
Year	All Crashes	Fatal Crashes
2011	1,895	24
2012	1,981	21
2013	1,902	29
2014	1,763	24
2015	1,897	35
2016	1,988	42
2017	1,723	23
2018	1,558	23
2019	1,501	21
2020	1,235	39



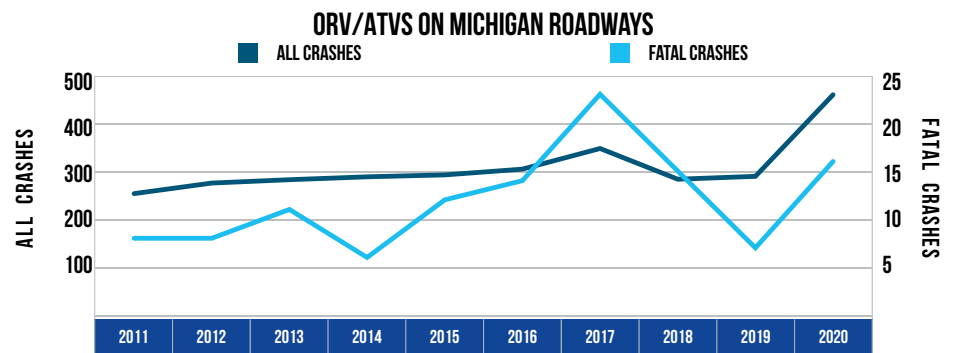
There were 1,235 bicycles involved in crashes in 2020, down 34.8 percent from 2011. There were 39 bicycles involved in fatal crashes in 2020, up 62.5 percent from 2011.

SNOWMOBILES ON MICHIGAN ROADWAYS		
Year	All Crashes	Fatal Crashes
2011	132	6
2012	120	5
2013	179	10
2014	204	9
2015	133	2
2016	106	9
2017	119	5
2018	78	0
2019	156	9
2020	99	2



There were 99 snowmobiles in crashes on roadways in 2020, down 25.0 percent from 2011. There were two snowmobiles in fatal crashes, down 66.7 percent from 2011.

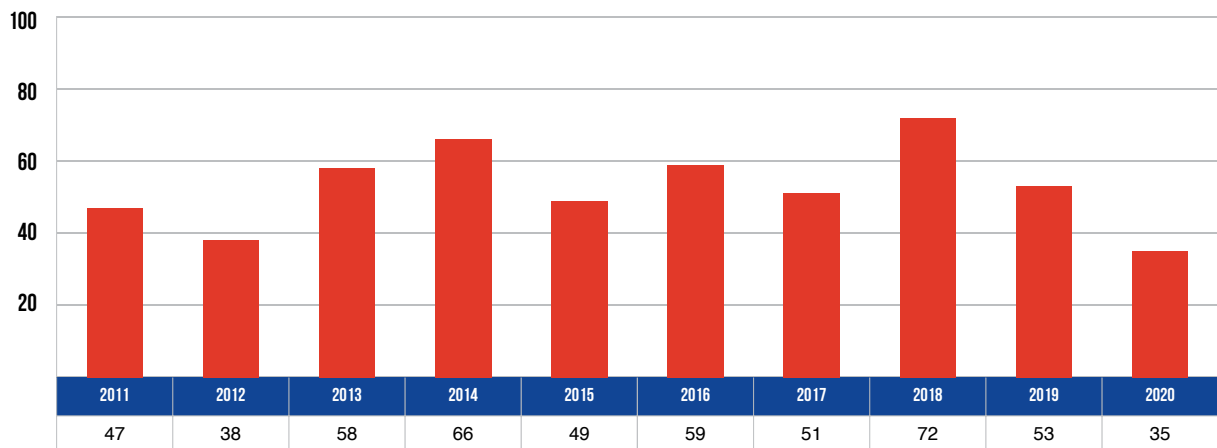
ORV/ATVS ON MICHIGAN ROADWAYS		
Year	All Crashes	Fatal Crashes
2011	253	8
2012	275	8
2013	282	11
2014	288	6
2015	292	12
2016	304	14
2017	347	23
2018	283	15
2019	289	7
2020	459	16



There were 459 ORV/ATVs in crashes on roadways in 2020, up 81.4 percent from 2011. There were 16 ORV/ATVs in fatal crashes, up 100.0 percent from 2011.

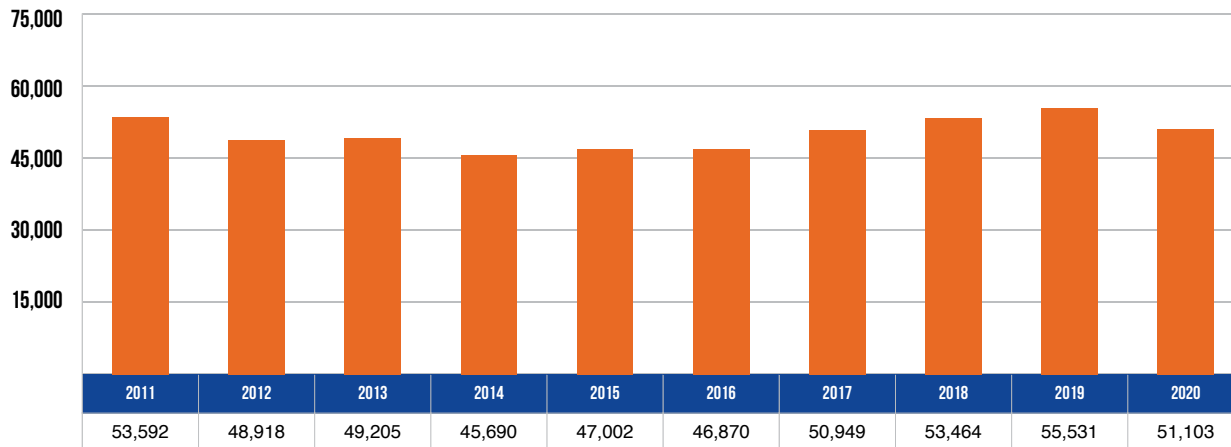
10 YEAR TRENDS-STATEWIDE (CONTINUED)

VEHICLE-TRAIN CRASHES



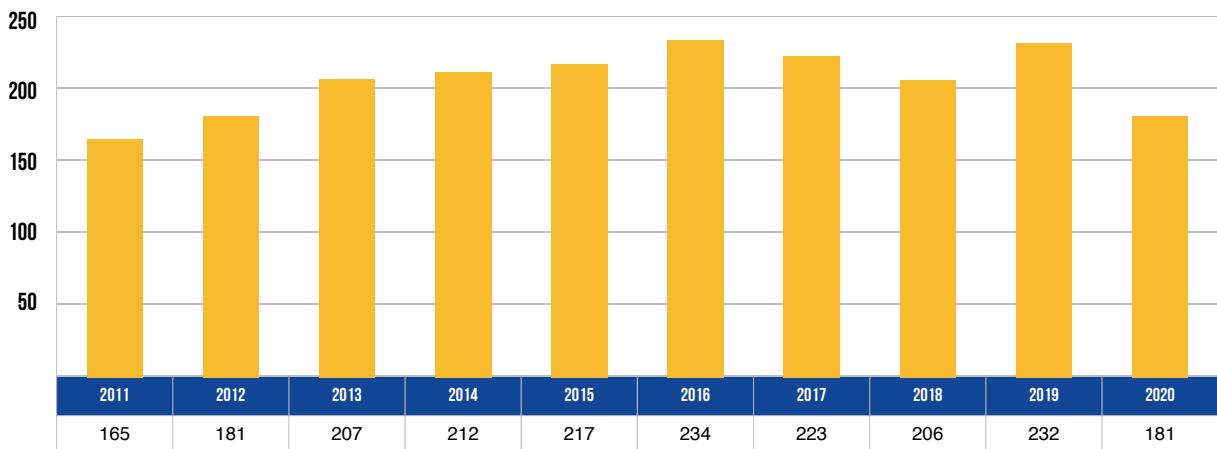
There were 35 vehicle-train crashes in 2020--a decrease of 25.5 percent in the 10-year period.

VEHICLE-DEER CRASHES



There were 51,103 vehicle-deer crashes in 2020--a decrease of 4.6 percent in the 10-year period.

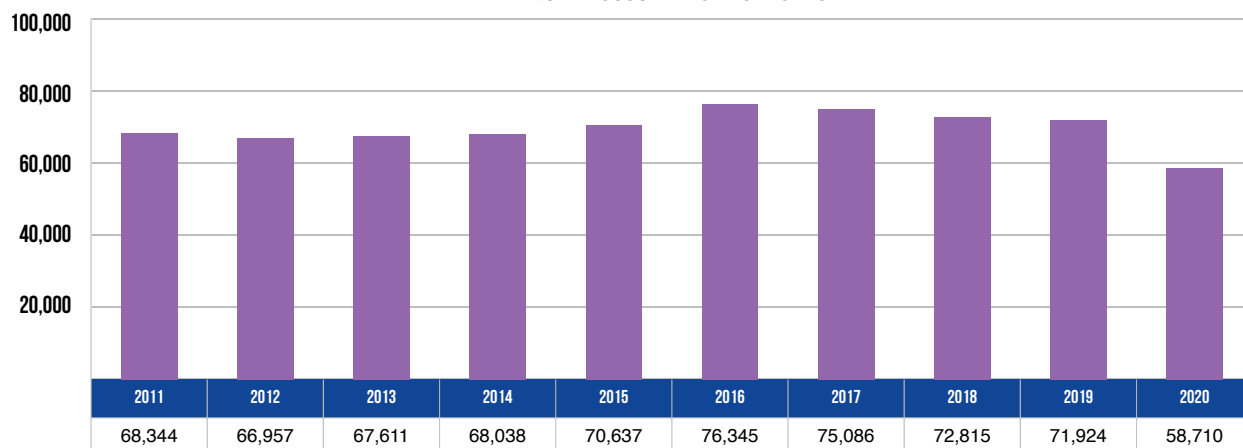
FARM EQUIPMENT CRASHES



There were 181 farm equipment crashes in 2020--an increase of 9.7 percent from 2011.

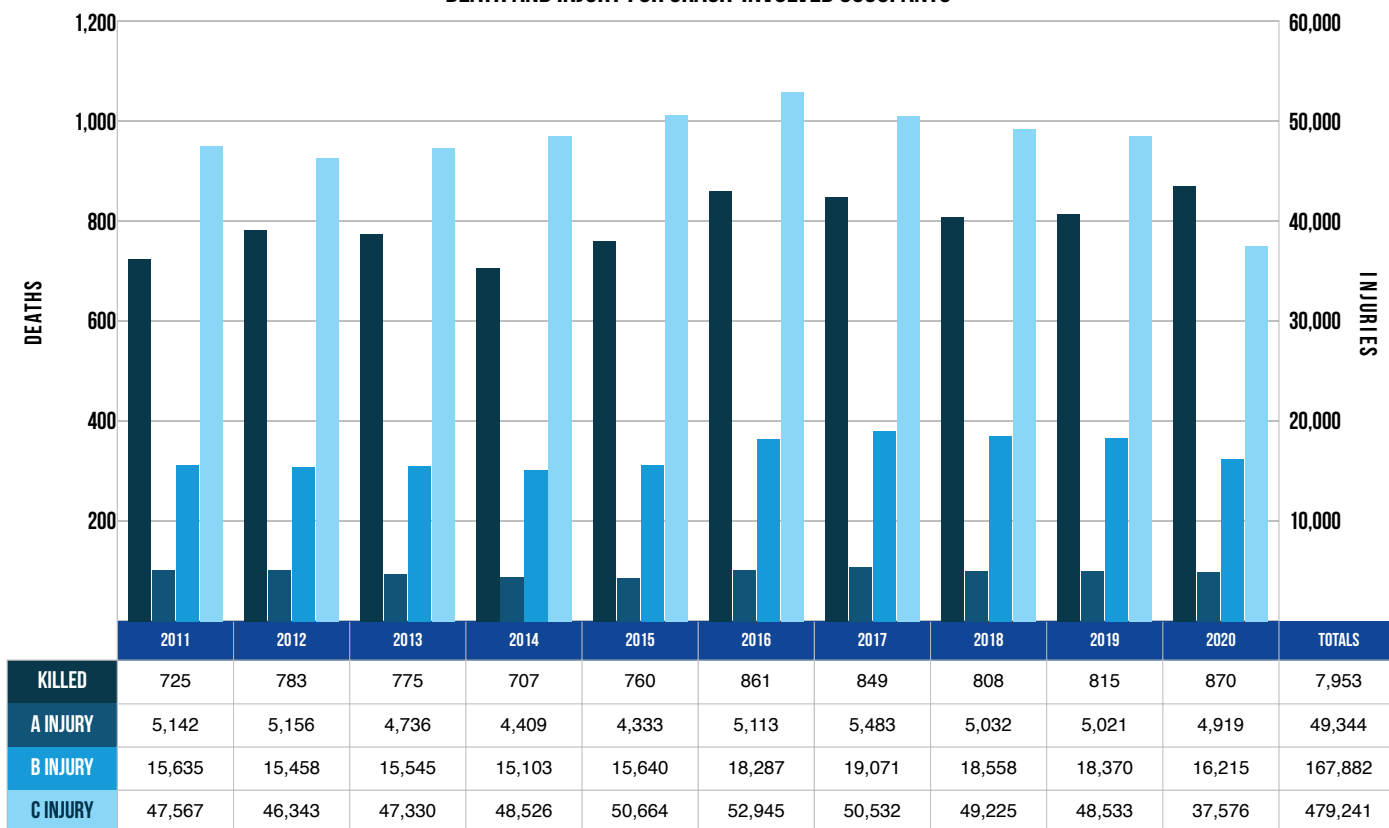
10 YEAR TRENDS-STATEWIDE (CONTINUED)

INJURED OCCUPANTS IN CRASHES



There were 58,710 occupants injured in crashes in 2020--a decrease of 14.1 percent from 2011.

DEATH AND INJURY FOR CRASH-INVOLVED OCCUPANTS



Over the period from 2011 to 2020, occupant deaths increased 20.0 percent, A injuries decreased 4.3 percent, B injuries increased 3.7 percent, and C injuries decreased 21.0 percent.

Note: These figures contain the number of occupants recorded as injured by the police officer on the UD-10.

10 YEAR TRENDS-STATEWIDE (CONTINUED)

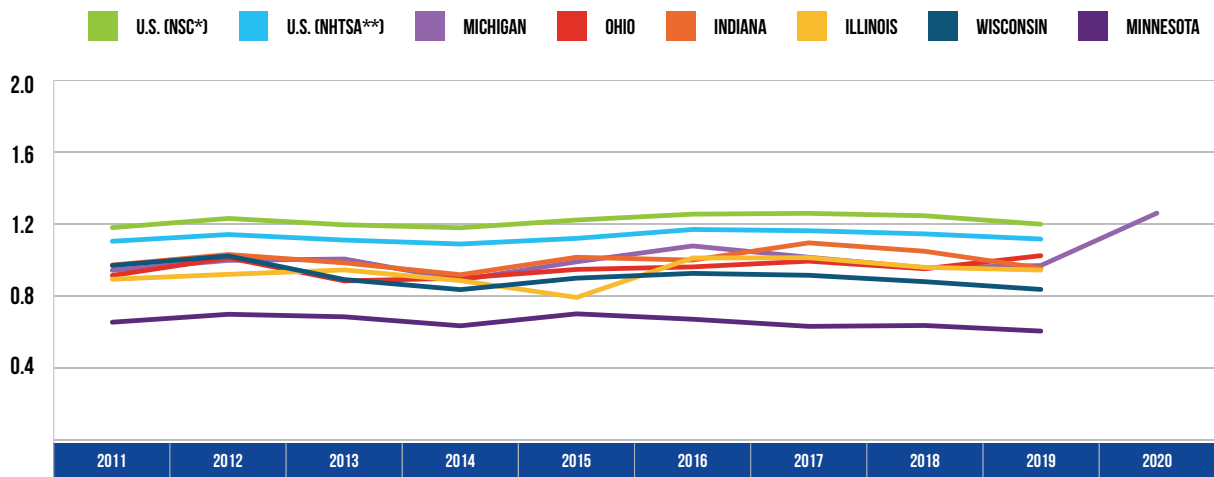
AVERAGE AGE OF DRIVERS IN CRASHES 2011 - 2020



Over the 10-year period, reflecting the demographic trend of increasing age in the general population, the average age of drivers involved in all crashes has increased 1.3 percent. The age of drivers involved in fatal crashes has increased 21.3 percent. The average age of drinking drivers in crashes has decreased 13.0 percent. The average age of drinking drivers in fatal crashes has increased 12.2 percent.

10 YEAR TRENDS-STATEWIDE (CONTINUED)

FATALITIES PER 100 MILLION VMT 2011 - 2020



YEAR	U.S. (NSC*)	U.S. (NHTSA**)	MICHIGAN	OHIO	INDIANA	ILLINOIS	WISCONSIN	MINNESOTA
2011	1.2	1.1	0.9	0.9	1.0	0.9	1.0	0.6
2012	1.2	1.1	1.0	1.0	1.0	0.9	1.0	0.7
2013	1.2	1.1	1.0	0.9	1.0	0.9	0.9	0.7
2014	1.2	1.1	0.9	0.9	0.9	0.9	0.8	0.6
2015	1.2	1.1	1.0	0.9	1.0	0.8	0.9	0.7
2016	1.2	1.2	1.1	1.0	1.0	1.0	0.9	0.7
2017	1.3	1.2	1.0	1.0	1.1	1.0	0.9	0.6
2018	1.2	1.1	1.0	0.9	1.0	1.0	0.9	0.6
2019	1.2	1.1	1.0	1.0	0.9	0.9	0.8	0.6
2020	-	-	1.3	-	-	-	-	-

* National Safety Council (NSC) reports traffic and nontraffic deaths within a year of the crash.

**National Highway Traffic Safety Administration (NHTSA) reports only traffic deaths that occur within 30 days of the crash.

U.S. data for this table and tables on the following page were provided by the National Safety Council [3], the National Highway Traffic Safety Administration [4], and the Federal Highway Administration [5]. State data for this table and tables on the following page were provided by Ohio [6], Indiana [7], Illinois [8], Wisconsin [9], and Minnesota [10].

10 YEAR TRENDS-STATEWIDE (CONTINUED)

YEAR	U.S. (NSC) FATALITIES	U.S. (NHTSA) FATALITIES	MICHIGAN FATALITIES	OHIO FATALITIES	INDIANA FATALITIES	ILLINOIS FATALITIES	WISCONSIN FATALITIES	MINNESOTA FATALITIES
2011	34,600	32,367	889	1,015	749	918	565	368
2012	36,200	33,561	936	1,122	779	956	601	395
2013	35,369	32,850	951	990	777	991	527	387
2014	35,400	32,675	876	1,008	743	924	498	361
2015	38,300	35,092	963	1,110	829	829	555	411
2016	40,200	37,461	1,064	1,133	821	1,078	588	392
2017	40,231	37,133	1,028	1,179	911	1,090	594	358
2018	40,000	36,750	974	1,068	873	1,031	576	381
2019	38,800	36,120	985	1,155	800	1,010	551	364
2020	-	-	1,083	-	-	-	-	-

YEAR	U.S. (FHWA) VMT	MICHIGAN VMT	OHIO VMT	INDIANA VMT	ILLINOIS VMT	WISCONSIN VMT	MINNESOTA VMT
2011	2,946	94.8	111.7	77.5	103.4	58.6	56.7
2012	2,954	94.3	111.5	76.0	104.5	59.1	57.0
2013	2,972	95.1	112.7	79.4	105.5	59.5	57.0
2014	3,016	99.1	112.8	81.4	105.0	60.0	57.4
2015	3,148	97.8	117.8	82.1	105.4	62.1	59.1
2016	3,218	99.2	118.5	82.6	107.2	63.9	58.9
2017	3,209	101.8	119.3	83.6	108.2	65.3	57.2
2018	3,225	102.4	112.9	83.7	108.1	65.9	60.4
2019	3,251	102.2	113.4	84.3	107.6	66.3	60.7
2020	-	86.3	-	-	94.0	-	-

VMT described in billions of miles