

MTCF

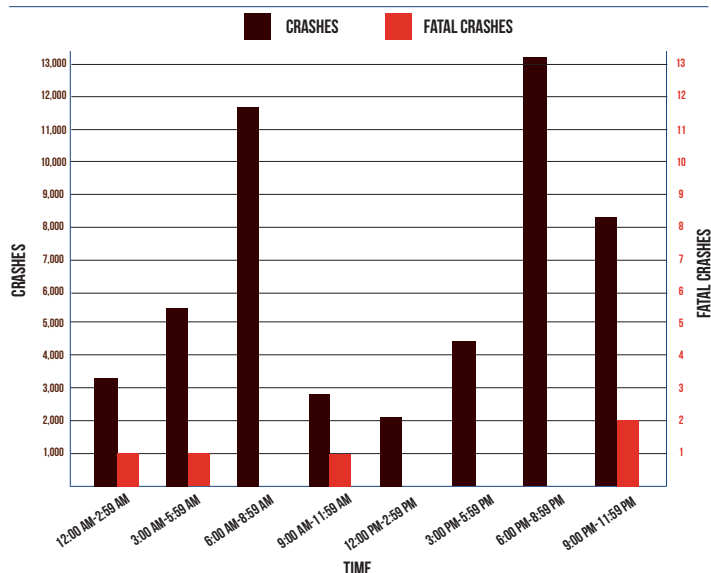
Michigan Traffic Crash Facts

DEER

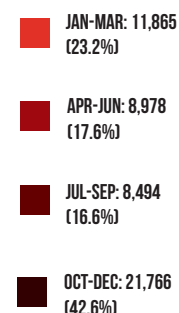
2020

Deer crashes include situations where a deer is a contributing factor but does not necessarily come in contact with a traffic unit.

MOTOR VEHICLE-DEER CRASHES BY TIME OF DAY



MOTOR VEHICLE-DEER CRASHES BY TIME OF YEAR



Michigan had 51,103 (20.8% of the total crashes) motor vehicle-deer crashes.

Passenger cars, SUVs, and vans represented 77.9 percent (40,010) of the vehicles involved.

As a result of vehicle-deer crashes, 1,400 people were injured and five people were killed. Three (60.0%) of those killed were occupants in passenger vehicles and two (40.0%) killed were motorcyclists.

Motor vehicle-deer involved crashes were highest during the 7:00-7:59 AM time period (4,951).

The top 10 counties experiencing vehicle-deer crashes were: Oakland 1,854; Kent 1,712; Jackson 1,471; Ottawa 1,363; Lapeer 1,243; Allegan 1,242; Genesee 1,169; Clinton 1,131; Washtenaw 1,068; and Sanilac 1,064.

The highest number of vehicle-deer crashes occurred during November (9,001).

Of the motor vehicle-deer crashes, 21,766 (42.6%) occurred during the fourth quarter of the year.