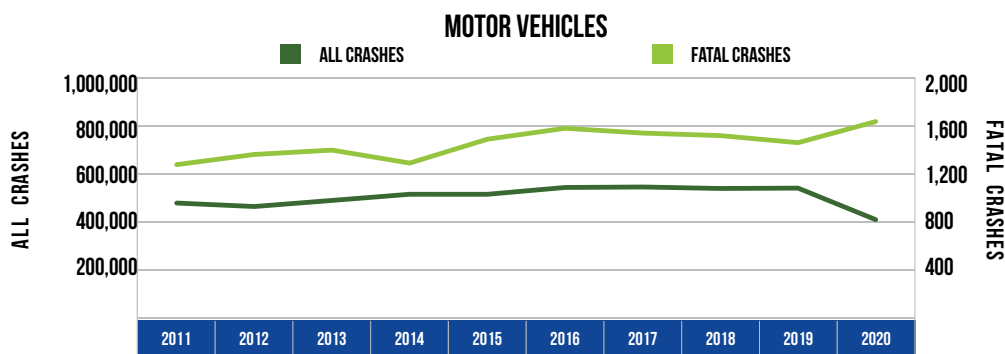


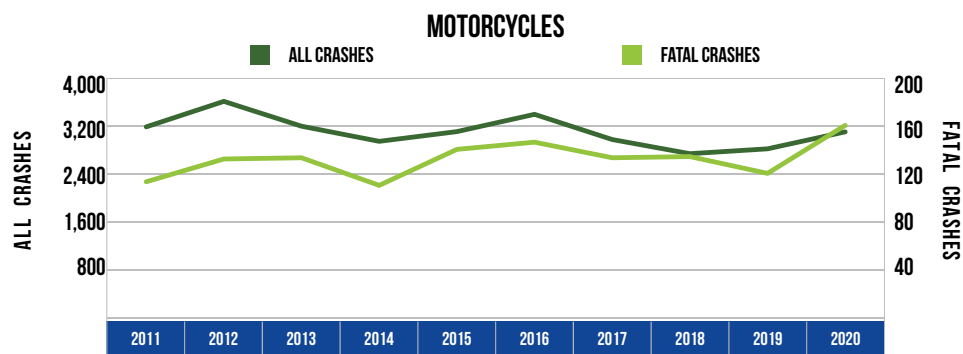
10 YEAR TRENDS-STATEWIDE (CONTINUED)

MOTOR VEHICLES		
Year	All Crashes	Fatal Crashes
2011	473,501	1,267
2012	459,030	1,352
2013	484,446	1,388
2014	510,086	1,280
2015	510,074	1,479
2016	538,412	1,570
2017	540,387	1,530
2018	534,223	1,509
2019	535,721	1,450
2020	404,286	1,626



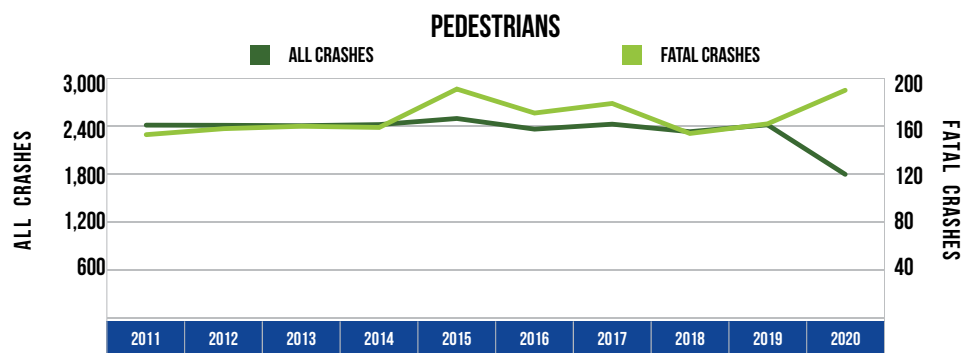
There were 404,286 motor vehicles involved in all crashes in 2020, down 14.6 percent from 2011. There were 1,626 motor vehicles involved in fatal crashes in 2020, up 28.3 percent from 2011.

MOTORCYCLES		
Year	All Crashes	Fatal Crashes
2011	3,175	113
2012	3,600	132
2013	3,186	133
2014	2,934	110
2015	3,096	140
2016	3,384	146
2017	2,964	133
2018	2,728	134
2019	2,809	120
2020	3,092	160



There were 3,092 motorcycles involved in crashes in 2020, a 2.6 percent decrease from 2011. There were 160 motorcycles involved in fatal crashes in 2020, up 41.6 percent from 2011.

PEDESTRIANS		
Year	All Crashes	Fatal Crashes
2011	2,399	152
2012	2,397	157
2013	2,392	159
2014	2,406	158
2015	2,482	190
2016	2,349	170
2017	2,411	178
2018	2,317	153
2019	2,403	161
2020	1,784	189



There were 1,784 pedestrians involved in crashes in 2020, down 25.6 percent from 2011. There were 189 pedestrians involved in fatal crashes in 2020, up 24.3 percent from 2011.