



2019

**MTCF**  
Michigan Traffic  
Crash Facts

# Michigan Traffic Crash Facts

## Reporting Criteria

Please pay particular attention to the wording when interpreting the three levels of data gathered for this report.

### Crash

The Crash Level analyzes data related to crash events and returns one result per crash.

Examples: Time, weather, and location.

### Units

The Units Level analyzes the experience of the units in the crash and returns one result per vehicle, driver, pedestrian, bicyclist, or train.

Examples: Vehicle type, driver condition, and unit events.

### People

The People Level analyzes the experience of the people involved in the crash and returns one result per occupant/person/party.

Examples: Age, injury severity, and seat belt or helmet use.

### **KABCO Injury Indicator:**

K = Killed

A = Suspected Serious Injury

B = Suspected Minor Injury

C = Possible Injury

O = No Injury

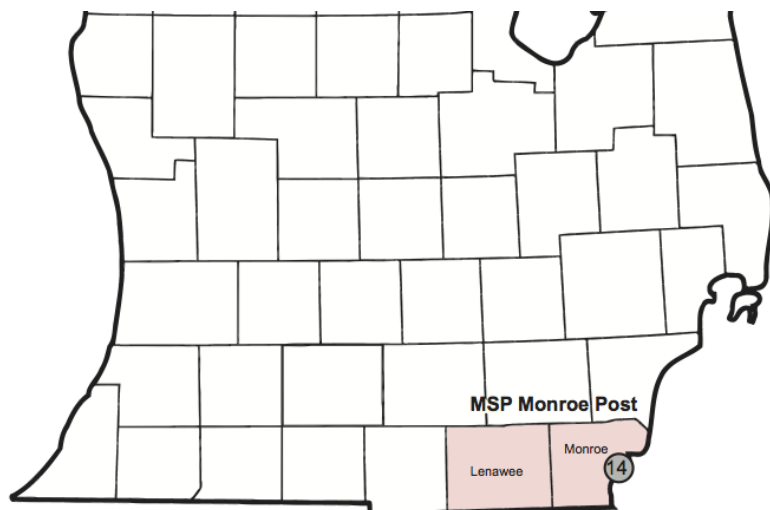
Property Damage Only (PDO)



## Michigan State Police (MSP) Post 14 - Monroe

### 2019 Traffic Crash Data & 2015-2019 5-Year Trends

Post 14 is comprised of Lenawee and Monroe counties. Trend tables for this report are based on those counties.



### Sources:

The crashes in this report occurred on public roadways in Michigan and resulted in injuries, fatalities, or property damage (with \$1,000 as a reporting threshold). The information was gathered from Michigan Traffic Crash Report Forms (UD-10) submitted by local police departments, sheriff's offices, and the Michigan State Police. Other related information was obtained from the departments of Transportation, State, and Community Health.

This page left intentionally blank

## MSP Post 14 - Monroe

- There were 6,489 crashes in Post 14 during 2019. [Page 1]
- A total of 28 fatalities resulted from 27 fatal crashes in 2019 in Post 14. [Page 1]
- There were 1,610 injuries and 1,137 injury crashes. [Page 1]
- There were 5,325 property damage only crashes (no fatalities or injuries). [Page 1]
- November had the highest number of crashes (754). [Pages 1-2]
- July had the highest number of fatal crashes (5) and fatalities (5). [Pages 1-2]
- July had the highest number of injury crashes (134) and injuries (203). [Page 1]
- November had the highest number of property damage only crashes (653). [Page 1]
- Of all vehicles involved in fatal crashes, 3 (6.5%) were motorcycles. [Page 1]
- Friday was the day of the week with the highest number of crashes (1,005) and Monday had the highest number of fatal crashes (9). [Pages 2-3]
- The 3:00 PM - 5:59 PM time period had the highest number of crashes (1,340). This holds true for every year between 2015 and 2019. The 3:00 PM - 5:59 PM time period had the highest number of fatal crashes (7). [Pages 5-6]
- During the period from 2015 to 2019, the highest number of deer crashes occurred in 2019 (1,291). The 6:00 PM - 8:59 PM time period had the highest number of deer-involved crashes. There were 0 fatal crashes involving deer in 2019. [Pages 7-8]
- Monroe County (60.6%) had the highest number of crashes in Post 14 in 2019, followed by Lenawee County (39.4%). [Page 8]
- Lenawee County (53.6%) had the highest number of fatalities in Post 14 in 2019, followed by Monroe County (46.4%). [Page 8]
- The highest number of drivers in crashes (10,104) occurred during 2019 and the highest number of drivers coded drinking in crashes (325) occurred during 2019 within the five year period between 2015 and 2019. [Page 9]
- A total of 331 crashes involved alcohol in 2019. [Page 11]
- Alcohol-involved fatal crashes were the highest in 2017 during the five-year period from 2015 to 2019 at 16. [Page 11]
- A total of 87 crashes, 4 fatal crashes, and 9 suspected serious injury crashes involved drugs in 2019. [Page 12]
- There were 8,945 drivers wearing seatbelts and 107 drivers not wearing seatbelts in crashes in 2019. Of the 107 drivers not wearing seat belts, 4 (3.7%) were killed and 54 (50.5%) were injured. [Pages 15-17]
- The most common hazardous action coded for drivers in 2019 in all crashes was unable to stop in assured clear distance (1,111), while the most common hazardous action coded for drivers in fatal crashes was unknown (5). [Page 18]

# MSP Post 14 - Monroe (continued)

## Post 14 Experience

In 2019:

There were 10,104 drivers involved in 6,489 motor vehicle crashes in MSP Post 14. Of those crashes, 27 were classified as fatal, resulting in 28 fatalities. An additional 1,610 persons were injured.

Post 14 experienced the highest number of motor vehicle crashes (754) in November, the highest number of fatal crashes (5) and the highest number of persons killed (5) in July.

Michigan driver statistics indicate 6.6 percent of licensed drivers in Post 14 were age 16-20, and 11.6 percent of drivers in crashes were also in that age group.

## 2019 - Crashes and Injuries by Month

Month	Crashes				Persons	
	Total	Fatal	Injury	Property Damage Only (PDO)	Fatalities	Injuries
January	626	3	88	535	3	126
February	561	1	78	482	1	103
March	502	1	79	422	1	115
April	401	3	72	326	3	107
May	460	2	78	380	2	98
June	533	2	95	436	2	148
July	470	5	134	331	5	203
August	458	3	100	355	3	146
September	472	1	110	361	1	151
October	619	3	113	503	3	159
November	754	1	100	653	1	132
December	633	2	90	541	3	122
<b>Total</b>	<b>6,489</b>	<b>27</b>	<b>1,137</b>	<b>5,325</b>	<b>28</b>	<b>1,610</b>

## 2019 - Driver Statistics

Age Group	Post 14			Driver Rates	
	2019 Population	Licensed Drivers	Drivers in Crashes	Per 10k Population	Per 10k Licensed
0 - 15	45,606	1,404	22	4.8	156.7
16 - 20	15,500	12,658	1,175	758.1	928.3
21 - 24	11,795	11,350	832	705.4	733.0
25 - 64	128,674	122,267	6,175	479.9	505.0
65 +	47,376	44,255	1,159	244.6	261.9
Unknown	0	0	741	--	--
<b>Total</b>	<b>248,951</b>	<b>191,934</b>	<b>10,104</b>	<b>405.9</b>	<b>526.4</b>

## 2019 - Vehicles in Crashes

Vehicle Type	Motor Vehicles		Fatal Crashes		Injury Crashes	PDO Crashes
	Number of Vehicles	% of Total	Number	% of Total	Number	Number
Passenger car, SUV, van	7,569	74.9	32	69.6	1,493	6,044
Motor home	12	0.1	0	0.0	1	11
Pickup truck	1,508	14.9	3	6.5	260	1,245
Small truck under 10,000 lbs. GVWR	49	0.5	0	0.0	3	46
Motorcycle	90	0.9	3	6.5	72	15
Moped / goped	3	0.0	0	0.0	3	0
Go-cart / golf cart	3	0.0	0	0.0	2	1
Snowmobile	0	0.0	0	0.0	0	0
Off-Road Vehicle - ORV / All-Terrain Vehicle - ATV	5	0.0	0	0.0	4	1
Other	35	0.3	0	0.0	3	32
Truck/bus over 10,000 lbs.	580	5.7	8	17.4	95	477
Unknown	250	2.5	0	0.0	21	229
<b>Total</b>	<b>10,104</b>	<b>100.0</b>	<b>46</b>	<b>100.0</b>	<b>1,957</b>	<b>8,101</b>

## 5-Year Trend - Crashes by Month

Month	2015		2016		2017		2018		2019	
	Total Crashes	Fatal Crashes	Total Crashes	Fatal Crashes	Total Crashes	Fatal Crashes	Total Crashes	Fatal Crashes	Total Crashes	Fatal Crashes
January	674	0	533	1	493	3	704	2	626	3
February	589	0	574	2	398	1	588	1	561	1
March	440	0	513	1	591	2	478	2	502	1
April	362	2	429	3	409	8	420	3	401	3
May	431	1	489	1	500	2	463	3	460	2
June	488	5	472	3	475	2	484	2	533	2
July	487	3	466	3	433	4	444	6	470	5
August	415	2	442	3	427	2	418	3	458	3
September	490	3	432	1	427	4	434	2	472	1
October	585	3	575	5	533	3	547	3	619	3
November	675	0	601	5	556	2	620	3	754	1
December	561	3	645	2	833	2	509	0	633	2
<b>Total</b>	<b>6,197</b>	<b>22</b>	<b>6,171</b>	<b>30</b>	<b>6,075</b>	<b>35</b>	<b>6,109</b>	<b>30</b>	<b>6,489</b>	<b>27</b>

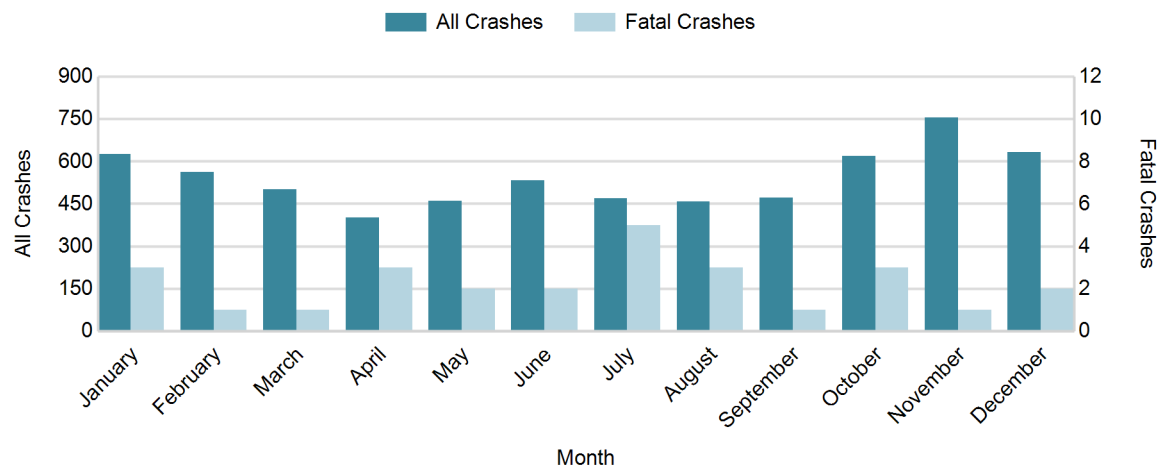
Note: † Indicates that the highest number of total crashes reported in the 5-year period occurred in the same month

## 5-Year Trend - Crashes by Day of Week

Day	2015		2016		2017		2018		2019	
	Total Crashes	Fatal Crashes	Total Crashes	Fatal Crashes	Total Crashes	Fatal Crashes	Total Crashes	Fatal Crashes	Total Crashes	Fatal Crashes
Monday	946	3	803	5	923	3	914	3	969	9
Tuesday	894	2	966	6	854	5	875	3	958	1
Wednesday	915	5	948	2	893	4	851	4	988	3
Thursday	877	2	927	0	903	6	967	2	935	5
Friday	937	5	1,030	4	1,008	8	978	8	1,005	5
Saturday	911	1	809	6	783	5	793	5	831	1
Sunday	717	4	688	7	711	4	731	5	803	3
<b>Total</b>	<b>6,197</b>	<b>22</b>	<b>6,171</b>	<b>30</b>	<b>6,075</b>	<b>35</b>	<b>6,109</b>	<b>30</b>	<b>6,489</b>	<b>27</b>

Note: † Indicates that the highest number of total crashes reported in the 5-year period occurred on the same day of the week

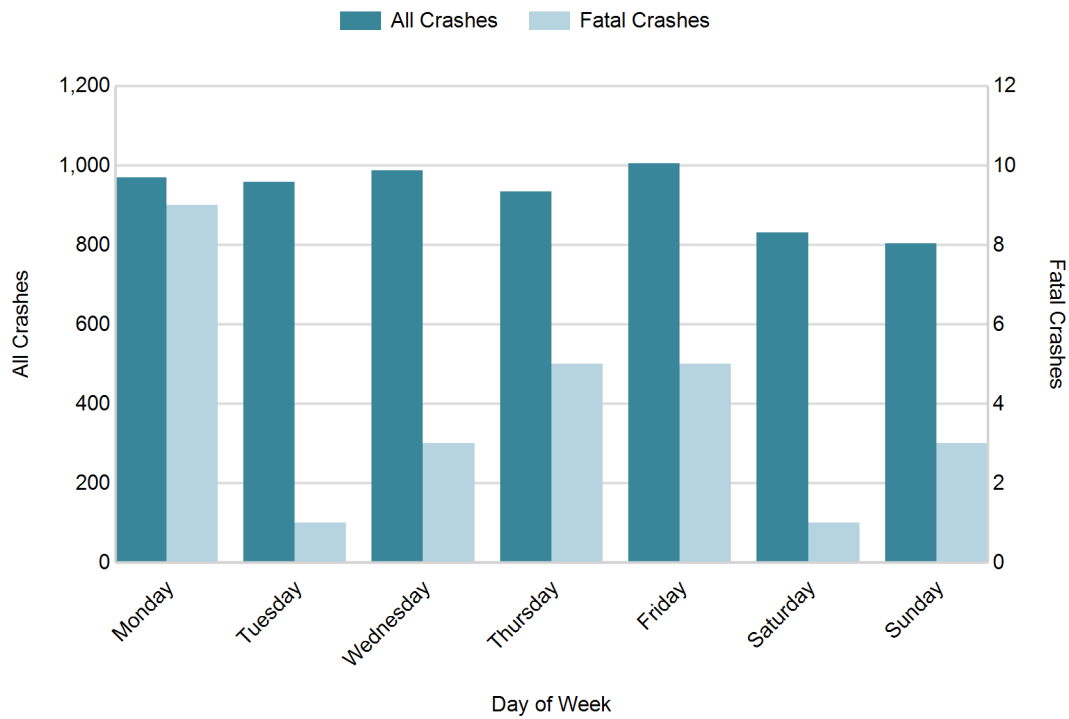
## 2019 Crashes by Month



## 2019 - Crashes by Day of Week

Day	All Crashes		Fatal Crashes		Injury Crashes			PDO Crashes
	Number	% of Total	Number	% of Fatal	A	B	C	Number
Monday	969	14.9	9	33.3	18	45	97	800
Tuesday	958	14.8	1	3.7	12	66	102	777
Wednesday	988	15.2	3	11.1	19	64	98	804
Thursday	935	14.4	5	18.5	18	58	91	763
Friday	1,005	15.5	5	18.5	18	54	93	835
Saturday	831	12.8	1	3.7	19	51	68	692
Sunday	803	12.4	3	11.1	15	60	71	654
<b>Total</b>	<b>6,489</b>	<b>100.0</b>	<b>27</b>	<b>100.0</b>	<b>119</b>	<b>398</b>	<b>620</b>	<b>5,325</b>

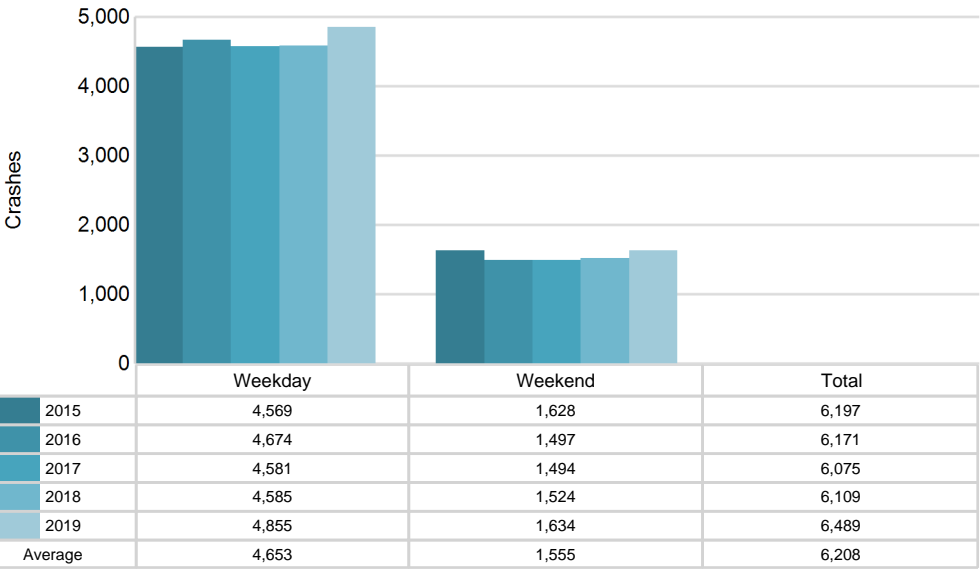
## 2019 Day of Week and Severity



5-Year Trend - Crashes by Weekday and Weekend

Portion of Week	2015		2016		2017		2018		2019	
	Total Crashes	Fatal Crashes	Total Crashes	Fatal Crashes	Total Crashes	Fatal Crashes	Total Crashes	Fatal Crashes	Total Crashes	Fatal Crashes
Weekday	4,569	17	4,674	17	4,581	26	4,585	20	4,855	23
Weekend	1,628	5	1,497	13	1,494	9	1,524	10	1,634	4
Total	6,197	22	6,171	30	6,075	35	6,109	30	6,489	27

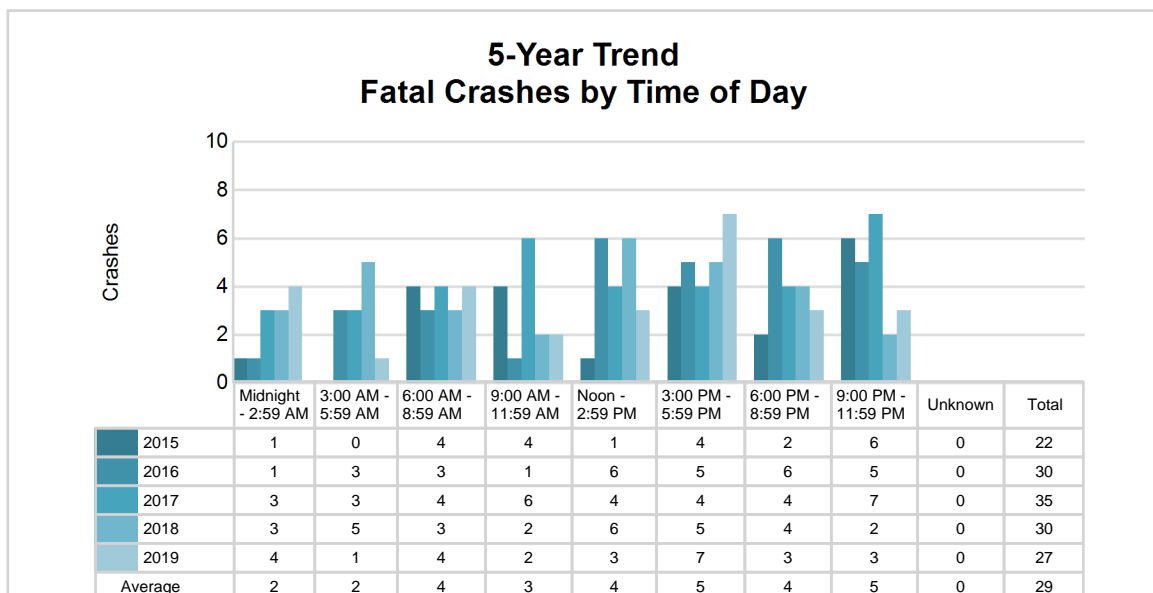
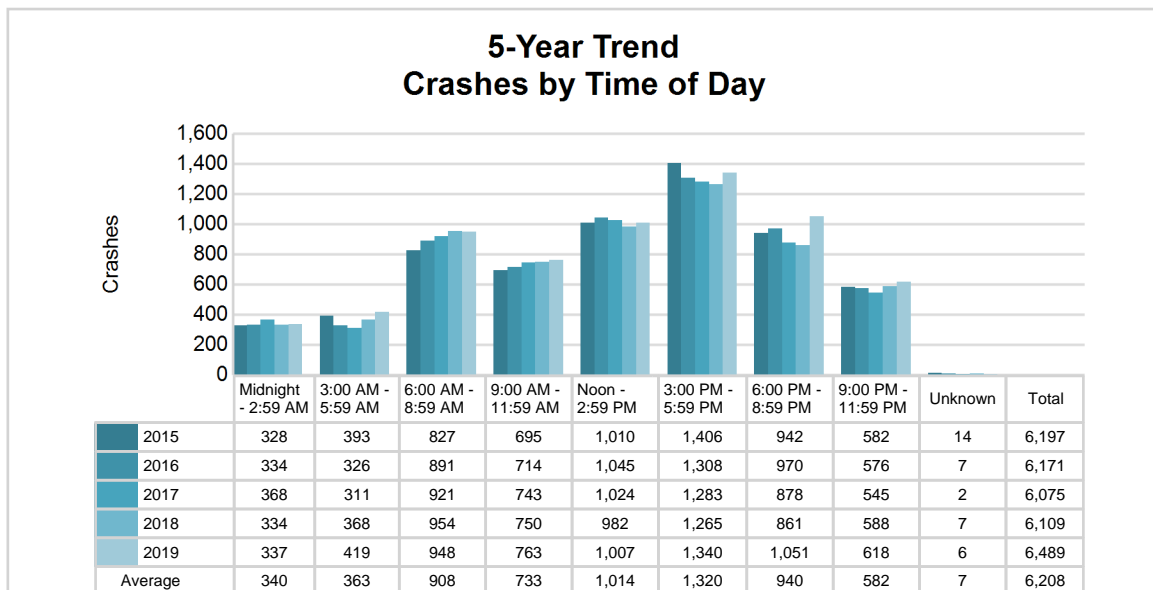
5-Year Crash Trends by Weekday (Monday - Friday) and Weekend (Saturday & Sunday)



## 5-Year Trend - Crashes by Time of Day

Time of Day	2015		2016		2017		2018		2019	
	Total Crashes	Fatal Crashes	Total Crashes	Fatal Crashes	Total Crashes	Fatal Crashes	Total Crashes	Fatal Crashes	Total Crashes	Fatal Crashes
Midnight - 2:59 AM	328	1	334	1	368	3	334	3	337	4
3:00 AM - 5:59 AM	393	0	326	3	311	3	368	5	419	1
6:00 AM - 8:59 AM	827	4	891	3	921	4	954	3	948	4
9:00 AM - 11:59 AM	695	4	714	1	743	6	750	2	763	2
Noon - 2:59 PM	1,010	1	1,045	6	1,024	4	982	6	1,007	3
3:00 PM - 5:59 PM	1,406 †	4	1,308 †	5	1,283 †	4	1,265 †	5	1,340 †	7
6:00 PM - 8:59 PM	942	2	970	6	878	4	861	4	1,051	3
9:00 PM - 11:59 PM	582	6	576	5	545	7	588	2	618	3
Unknown	14	0	7	0	2	0	7	0	6	0
<b>Total</b>	<b>6,197</b>	<b>22</b>	<b>6,171</b>	<b>30</b>	<b>6,075</b>	<b>35</b>	<b>6,109</b>	<b>30</b>	<b>6,489</b>	<b>27</b>

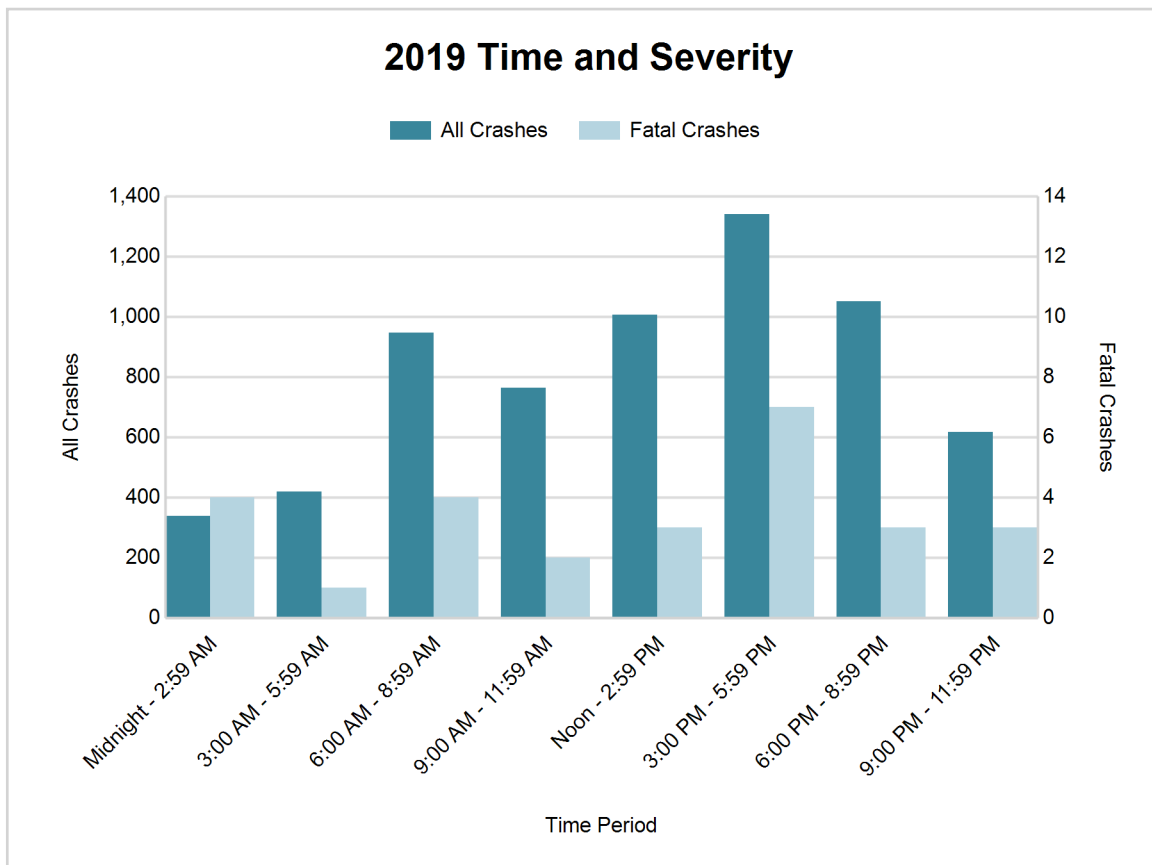
Note: † Indicates that the highest number of total crashes reported in the 5-year period occurred in the same time period





## 2019 - Time and Severity

Time of Day	All Crashes		Fatal Crashes		Injury Crashes			PDO Crashes
	Number	% of Total	Number	% of Fatal	A	B	C	Number
Midnight - 2:59 AM	337	5.2	4	14.8	11	36	20	266
3:00 AM - 5:59 AM	419	6.5	1	3.7	9	22	31	356
6:00 AM - 8:59 AM	948	14.6	4	14.8	10	41	61	832
9:00 AM - 11:59 AM	763	11.8	2	7.4	10	43	84	624
Noon - 2:59 PM	1,007	15.5	3	11.1	23	87	113	781
3:00 PM - 5:59 PM	1,340	20.7	7	25.9	28	76	154	1,075
6:00 PM - 8:59 PM	1,051	16.2	3	11.1	17	53	113	865
9:00 PM - 11:59 PM	618	9.5	3	11.1	11	40	44	520
Unknown	6	0.1	0	0.0	0	0	0	6
<b>Total</b>	<b>6,489</b>	<b>100.0</b>	<b>27</b>	<b>100.0</b>	<b>119</b>	<b>398</b>	<b>620</b>	<b>5,325</b>

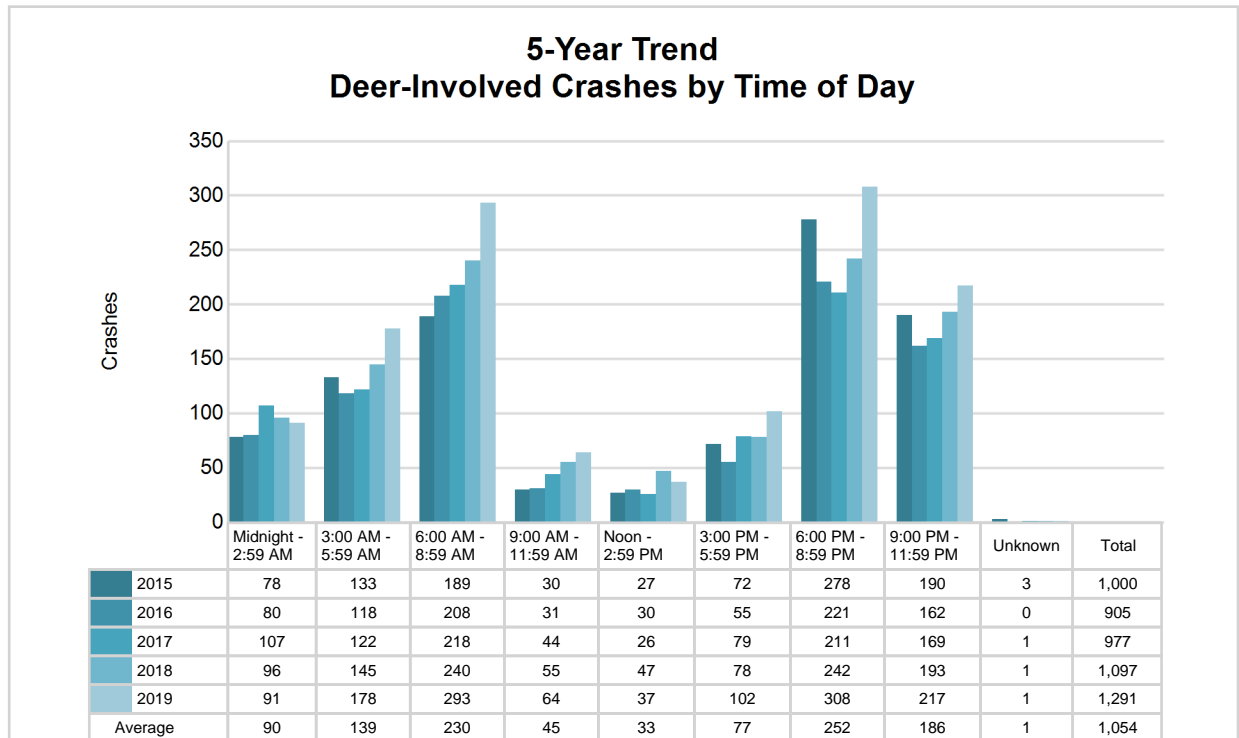


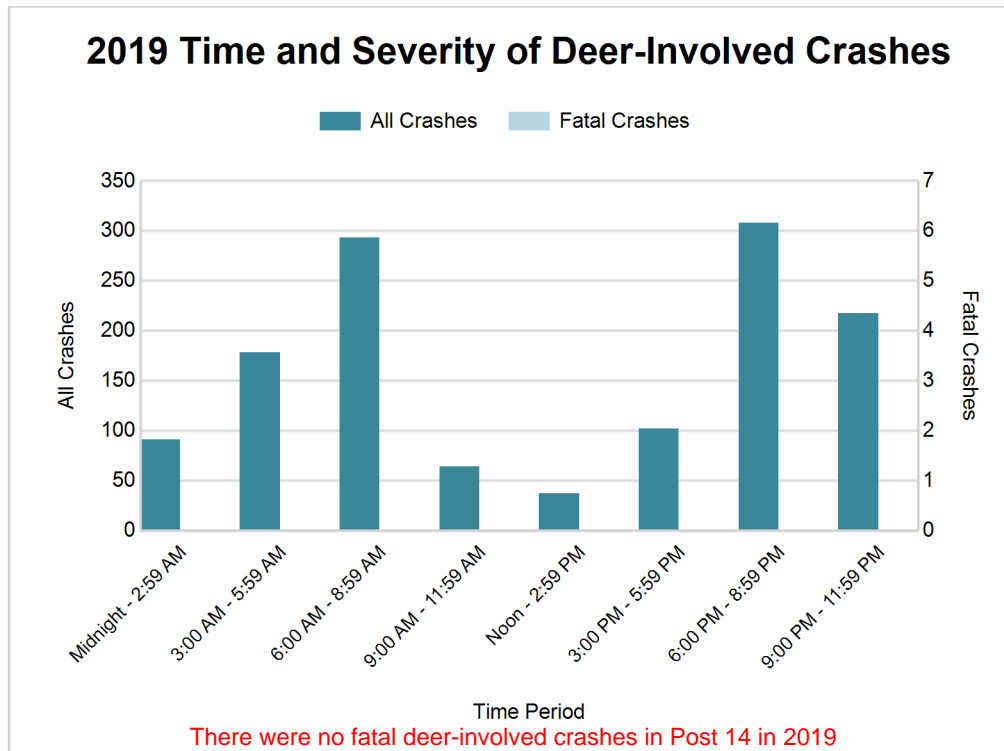
# MSP Post 14 - Monroe (continued)

## 5-Year Trend - Deer-Involved Crashes by Time of Day

Time of Day	2015		2016		2017		2018		2019	
	Total Crashes	Fatal Crashes	Total Crashes	Fatal Crashes	Total Crashes	Fatal Crashes	Total Crashes	Fatal Crashes	Total Crashes	Fatal Crashes
Midnight - 2:59 AM	78	0	80	0	107	0	96	0	91	0
3:00 AM - 5:59 AM	133	0	118	0	122	0	145	0	178	0
6:00 AM - 8:59 AM	189	0	208	0	218	0	240	0	293	0
9:00 AM - 11:59 AM	30	0	31	0	44	0	55	0	64	0
Noon - 2:59 PM	27	0	30	0	26	0	47	0	37	0
3:00 PM - 5:59 PM	72	0	55	0	79	0	78	0	102	0
6:00 PM - 8:59 PM	278	0	221	0	211	0	242	0	308	0
9:00 PM - 11:59 PM	190	0	162	0	169	0	193	0	217	0
Unknown	3	0	0	0	1	0	1	0	1	0
<b>Total</b>	<b>1,000</b>	<b>0</b>	<b>905</b>	<b>0</b>	<b>977</b>	<b>0</b>	<b>1,097</b>	<b>0</b>	<b>1,291</b>	<b>0</b>

Note: † Indicates that the highest number of total crashes reported in the 5-year period occurred in the same time period





#### 2019 - Reported Motor Vehicle Crashes by County

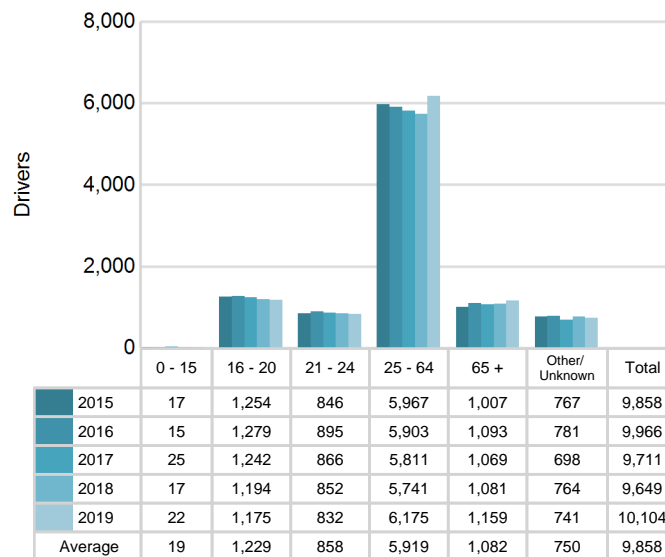
County	Crashes											Persons	
	Total	Fatal	Injury	Property Damage	Inter-state	US Route	State Route	Local Street	Alcohol-Involved	Drug-Involved	Deer-Involved	Fatalities	Injuries
Lenawee	2,557	14	428	2,115	0	586	580	1,391	105	19	811	15	633
Monroe	3,932	13	709	3,210	755	786	398	1,991	226	68	480	13	977
<b>Total</b>	<b>6,489</b>	<b>27</b>	<b>1,137</b>	<b>5,325</b>	<b>755</b>	<b>1,372</b>	<b>978</b>	<b>3,382</b>	<b>331</b>	<b>87</b>	<b>1,291</b>	<b>28</b>	<b>1,610</b>

# MSP Post 14 - Monroe (continued)

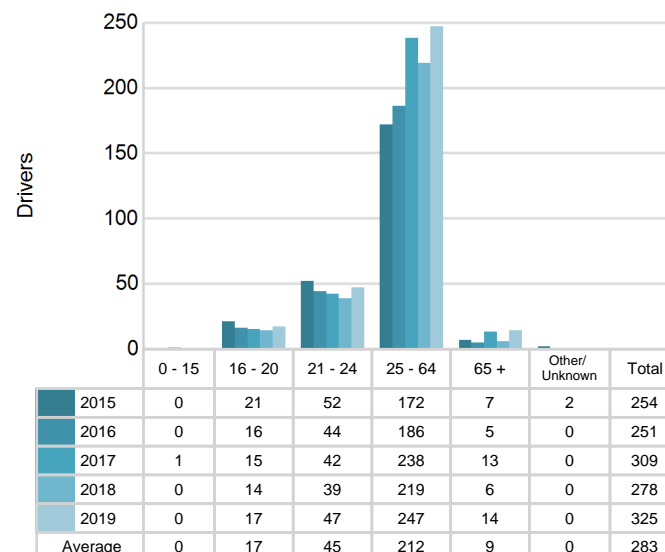
## 5-Year Trend - Drivers in Crashes Coded Drinking by Driver Age

Driver Age	2015		2016		2017		2018		2019	
	Total Drivers in Crashes	Total Drivers Coded Drinking	Total Drivers in Crashes	Total Drivers Coded Drinking	Total Drivers in Crashes	Total Drivers Coded Drinking	Total Drivers in Crashes	Total Drivers Coded Drinking	Total Drivers in Crashes	Total Drivers Coded Drinking
0 - 15	17	0	15	0	25	1	17	0	22	0
16 - 20	1,254	21	1,279	16	1,242	15	1,194	14	1,175	17
21 - 24	846	52	895	44	866	42	852	39	832	47
25 - 64	5,967	172	5,903	186	5,811	238	5,741	219	6,175	247
65 +	1,007	7	1,093	5	1,069	13	1,081	6	1,159	14
Unknown	767	2	781	0	698	0	764	0	741	0
<b>Total</b>	<b>9,858</b>	<b>254</b>	<b>9,966</b>	<b>251</b>	<b>9,711</b>	<b>309</b>	<b>9,649</b>	<b>278</b>	<b>10,104</b>	<b>325</b>

**5-Year Trend  
Total Drivers in Crashes by Age**



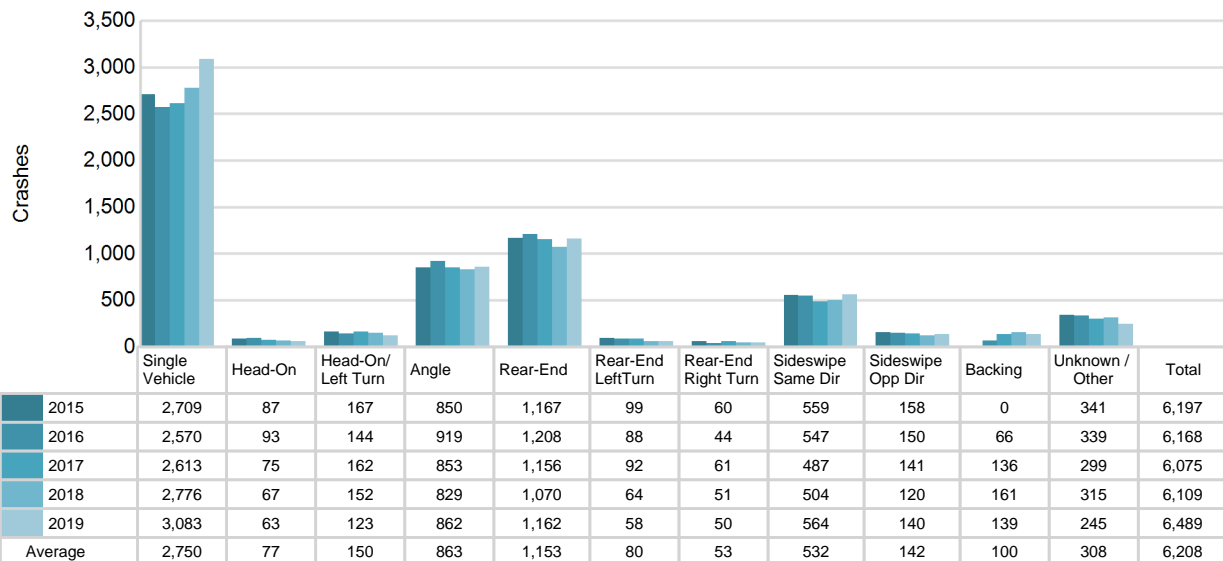
**5-Year Trend  
Total Drivers Coded Drinking by Age**



## 5-Year Trend - Crashes by Crash Type

Crash Type	2015		2016		2017		2018		2019	
	Total Crashes	Fatal Crashes	Total Crashes	Fatal Crashes	Total Crashes	Fatal Crashes	Total Crashes	Fatal Crashes	Total Crashes	Fatal Crashes
Single motor vehicle	2,709	13	2,570	15	2,613	17	2,776	15	3,083	10
Head-on	87	4	93	5	75	3	67	3	63	6
Head-on / left turn	167	0	144	0	162	0	152	3	123	1
Angle	850	3	919	6	853	9	829	3	862	4
Rear-end	1,167	1	1,208	2	1,156	3	1,070	4	1,162	4
Rear-end left turn	99	0	88	1	92	0	64	0	58	1
Rear-end right turn	60	0	44	0	61	0	51	0	50	0
Sideswipe same direction	559	0	547	0	487	1	504	0	564	0
Sideswipe opposite direction	158	0	150	1	141	0	120	0	140	0
Backing	0	0	66	0	136	0	161	0	139	0
Other / Unknown	341	1	339	0	299	2	315	2	245	1
Uncoded and Errors	0	0	3	0	0	0	0	0	0	0
<b>Total</b>	<b>6,197</b>	<b>22</b>	<b>6,171</b>	<b>30</b>	<b>6,075</b>	<b>35</b>	<b>6,109</b>	<b>30</b>	<b>6,489</b>	<b>27</b>

## 5-Year Trend Crashes by Crash Type



**2019 - Bodily Alcohol Concentration (BAC) Results Among All Vehicle Drivers in Alcohol-Involved Crashes by Age**

Age Group	Drivers				BAC Result Range for Drivers Coded Drinking				
	Total Drivers in Alcohol-Involved Crashes	Total Drivers Tested in all Crashes	Total Drivers Coded Drinking, Tested	Total Drivers Coded Drinking	BAC = 0.00	BAC 0.01 g/dL to 0.07 g/dL	BAC 0.08 g/dL to 0.16 g/dL	BAC 0.17 g/dL and Above	BAC Not Reported
0 - 15	1	0	0	0	0	0	0	0	0
16 - 20	26	24	16	17	0	2	9	1	5
21 - 24	58	46	38	47	0	5	7	16	19
25 - 64	297	258	206	247	0	23	43	92	89
65 +	25	16	12	14	0	4	5	3	2
Unknown	32	0	0	0	0	0	0	0	0
<b>Total</b>	<b>439</b>	<b>344</b>	<b>272</b>	<b>325</b>	<b>0</b>	<b>34</b>	<b>64</b>	<b>112</b>	<b>115</b>

Notes: BAC measured in grams (g) per deciliter (dL).

BAC may not be reported if drivers are not tested or if the results are not available immediately (as in the case of a blood test).

A driver may be coded by the officer as drinking even though no test is administered.

**Alcohol-Involved Crashes**

In 2019, there were 439 drivers in alcohol-involved crashes; 325 (74.0%) of those drivers were coded as had-been-drinking by the officer on the crash form.

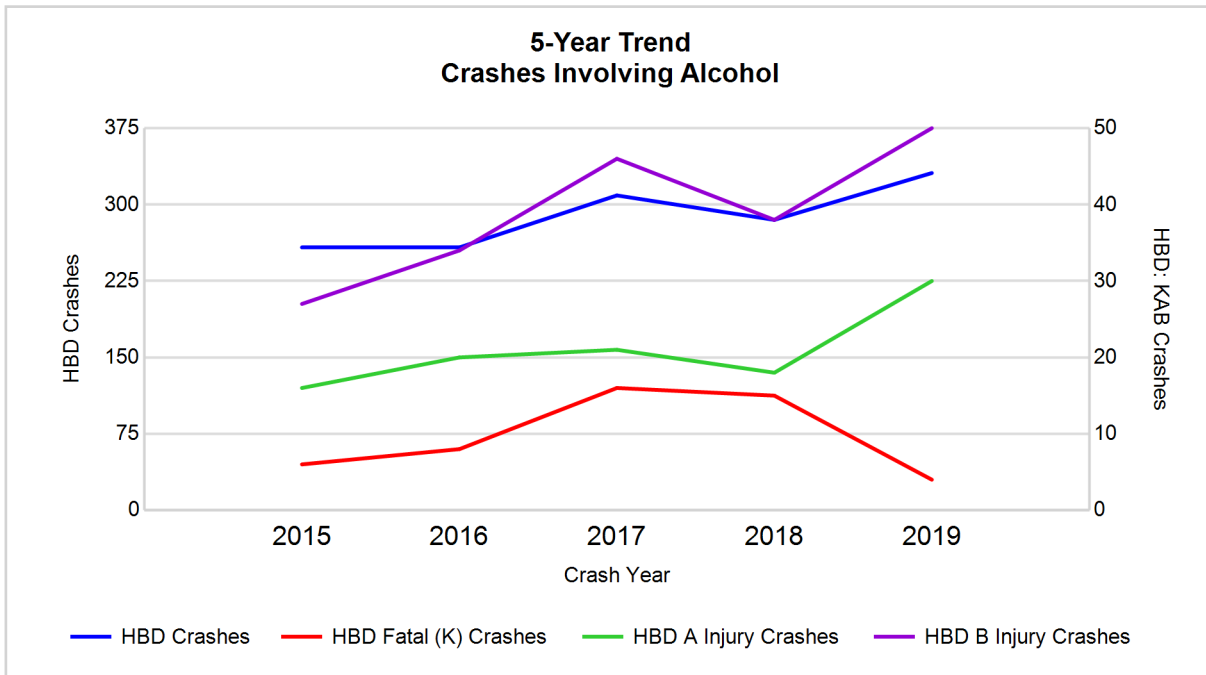
- 176 (54.2%) of the 325 drivers had a blood alcohol concentration (BAC) of 0.08 g/dL (grams per deciliter) or greater, and 112 (63.6%) of the 176 drivers had a BAC at or above 0.17 g/dL.
- 272 (83.7%) of the 325 drivers were coded as had-been-drinking and were tested for alcohol consumption.

**5-Year Trend - Crashes Involving Alcohol**

Year	All Crashes	HBD Crashes	% HBD	Fatal Crashes	HBD Fatal Crashes	% HBD	A Injury Crashes	HBD A Injury Crashes	% HBD	B Injury Crashes	HBD B Injury Crashes	% HBD
2015	6,197	258	4.2	22	6	27.3	83	16	19.3	267	27	10.1
2016	6,171	258	4.2	30	8	26.7	111	20	18.0	295	34	11.5
2017	6,075	309	5.1	35	16	45.7	124	21	16.9	347	46	13.3
2018	6,109	285	4.7	30	15	50.0	110	18	16.4	362	38	10.5
2019	6,489**	331**	5.1	27	4*	14.8*	119	30**	25.2**	398**	50**	12.6

Note: \* Indicates that the most recent year is the lowest number or percentage reported in the 5-year period in that column

\*\* Indicates that the most recent year is the highest number or percentage reported in the 5-year period in that column



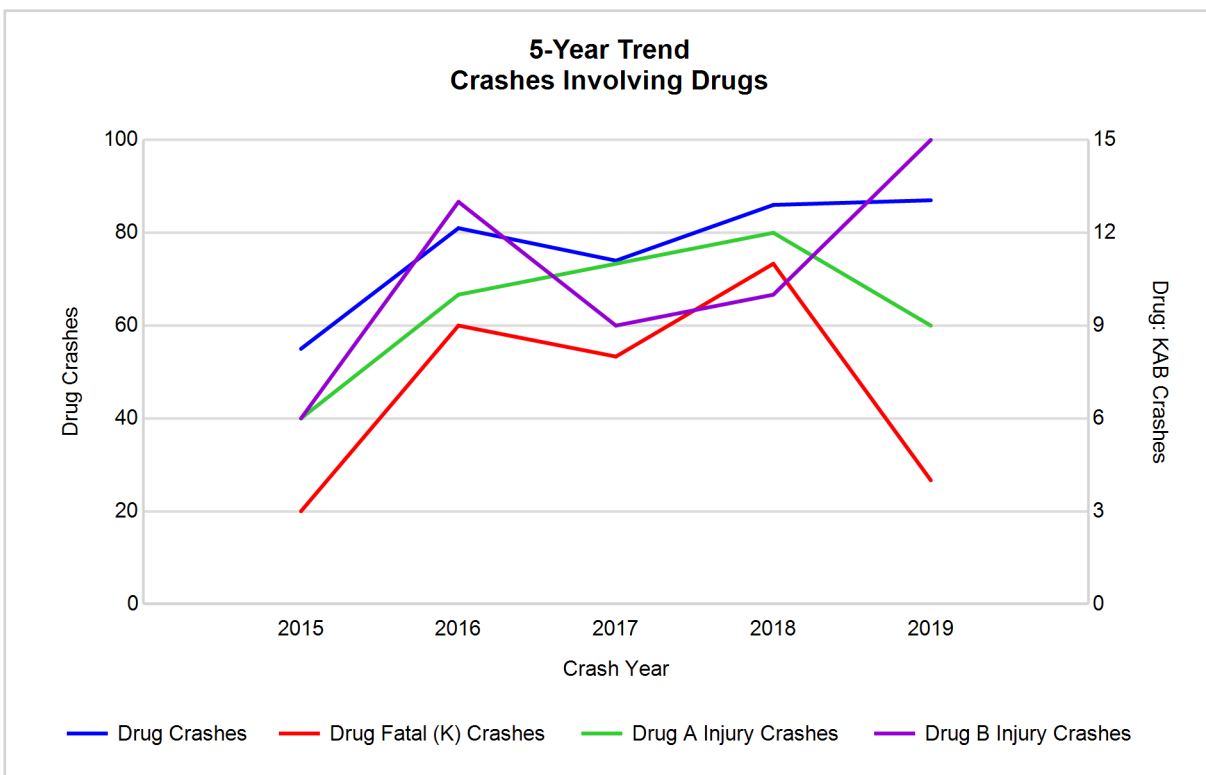
Note: Had-Been-Drinking (HBD)

## 5-Year Trend - Crashes Involving Drugs

Year	All Crashes	Drug Crashes	% Drug	Fatal Crashes	Drug Fatal Crashes	% Drug	A Injury Crashes	Drug A Injury Crashes	% Drug	B Injury Crashes	Drug B Injury Crashes	% Drug
2015	6,197	55	0.9	22	3	13.6	83	6	7.2	267	6	2.2
2016	6,171	81	1.3	30	9	30.0	111	10	9.0	295	13	4.4
2017	6,075	74	1.2	35	8	22.9	124	11	8.9	347	9	2.6
2018	6,109	86	1.4	30	11	36.7	110	12	10.9	362	10	2.8
2019	6,489**	87**	1.3	27	4	14.8	119	9	7.6	398**	15**	3.8

Note: \* Indicates that the most recent year is the lowest number or percentage reported in the 5-year period in that column

\*\* Indicates that the most recent year is the highest number or percentage reported in the 5-year period in that column

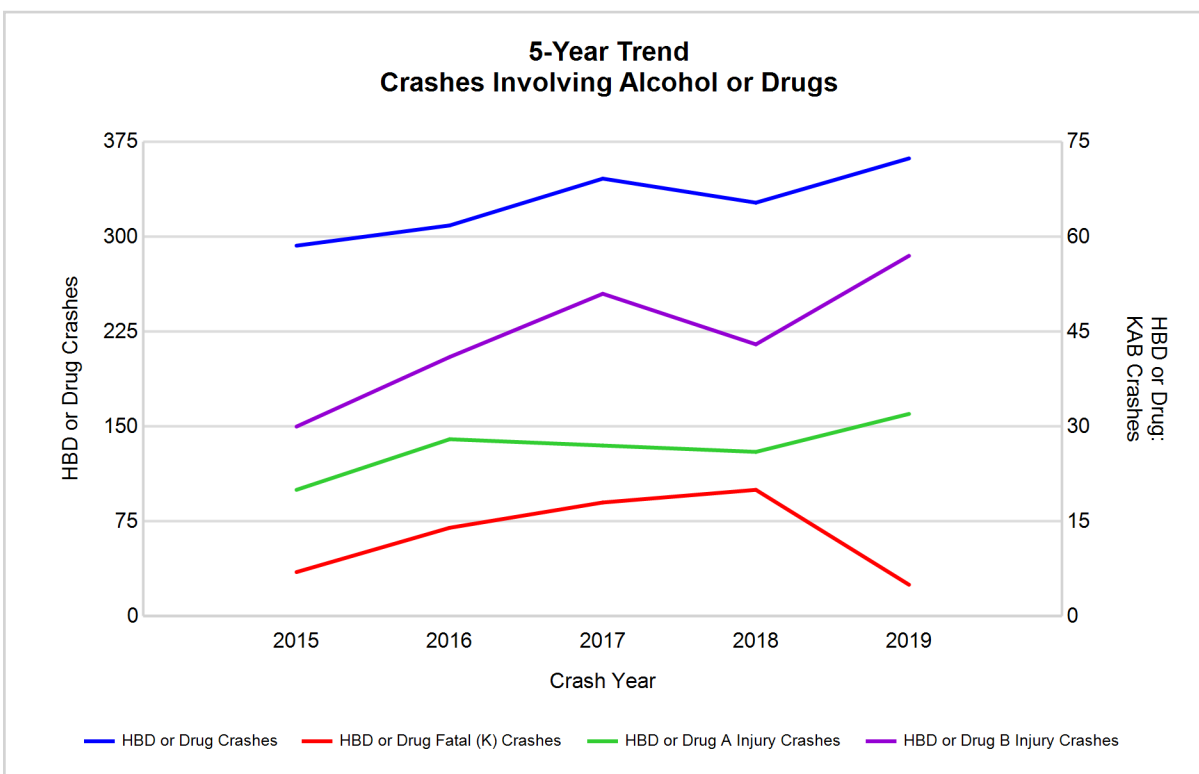


## 5-Year Trend - Crashes Involving Alcohol or Drugs

Year	All Crashes	HBD or Drug Crashes	% HBD or Drug	Fatal Crashes	HBD or Drug Fatal Crashes	% HBD or Drug	A Injury Crashes	HBD or Drug A Injury Crashes	% HBD or Drug	B Injury Crashes	HBD or Drug B Injury Crashes	% HBD or Drug
2015	6,197	293	4.7	22	7	31.8	83	20	24.1	267	30	11.2
2016	6,171	309	5.0	30	14	46.7	111	28	25.2	295	41	13.9
2017	6,075	346	5.7	35	18	51.4	124	27	21.8	347	51	14.7
2018	6,109	327	5.4	30	20	66.7	110	26	23.6	362	43	11.9
2019	6,489**	362**	5.6	27	5*	18.5*	119	32**	26.9**	398**	57**	14.3

Note: \* Indicates that the most recent year is the lowest number or percentage reported in the 5-year period in that column

\*\* Indicates that the most recent year is the highest number or percentage reported in the 5-year period in that column



Note: Had-Been-Drinking (HBD)



## 2019 - Restraints Worn Among Vehicle Drivers and Injured Passengers by Vehicle Type

Vehicle Type	Total Occupants			Fatalities			A - Suspected Serious			B - Suspected Minor			C - Possible Injury			No Injury		
	Total	Used Restraint	%	Total	Used Restraint	%	Total	Used Restraint	%	Total	Used Restraint	%	Total	Used Restraint	%	Total	Used Restraint	%
Passenger car, SUV, van	7,880	7,264	92.2	15	9	60.0	79	63	79.7	392	358	91.3	783	731	93.4	6,240	6,103	97.8
Motor home	12	9	75.0	0	0	0.0	0	0	0.0	0	0	0.0	1	1	100.0	9	8	88.9
Pickup truck	1,558	1,398	89.7	2	1	50.0	18	10	55.6	48	37	77.1	110	100	90.9	1,292	1,250	96.7
Small truck under 10,000 lbs. GVWR	49	46	93.9	0	0	0.0	0	0	0.0	0	0	0.0	2	2	100.0	44	44	100.0
Motorcycle	99	62	62.6	4	1	25.0	28	16	57.1	35	21	60.0	16	13	81.3	16	11	68.8
Moped / goped	3	0	0.0	0	0	0.0	0	0	0.0	2	0	0.0	1	0	0.0	0	0	0.0
Go-cart / golf cart	5	2	40.0	0	0	0.0	0	0	0.0	2	1	50.0	0	0	0.0	3	1	33.3
Snowmobile	0	0	0.0	0	0	0.0	0	0	0.0	0	0	0.0	0	0	0.0	0	0	0.0
Off-Road Vehicle - ORV / All-Terrain Vehicle - ATV	6	1	16.7	0	0	0.0	1	0	0.0	1	1	100.0	2	0	0.0	2	0	0.0
Other	35	16	45.7	0	0	0.0	0	0	0.0	1	1	100.0	2	1	50.0	20	14	70.0
Truck/bus over 10,000 lbs.	582	524	90.0	2	1	50.0	4	4	100.0	8	5	62.5	22	21	95.5	513	493	96.1
Unknown	250	0	0.0	0	0	0.0	0	0	0.0	0	0	0.0	0	0	0.0	0	0	0.0
<b>Total</b>	<b>10,479</b>	<b>9,322</b>	<b>89.0</b>	<b>23</b>	<b>12</b>	<b>52.2</b>	<b>130</b>	<b>93</b>	<b>71.5</b>	<b>489</b>	<b>424</b>	<b>86.7</b>	<b>939</b>	<b>869</b>	<b>92.5</b>	<b>8,139</b>	<b>7,924</b>	<b>97.4</b>

Note: Restraint Use includes shoulder belt only used, lap belt only used, both lap and shoulder belts used, child restraint used, restraint failure, and helmet worn.

## 2019 - Restraints Worn Among Vehicle Drivers and Injured Passengers by Age

Age Group	Total Occupants			Fatalities			A - Suspected Serious			B - Suspected Minor			C - Possible Injury			No Injury		
	Total	Used Restraint	%	Total	Used Restraint	%	Total	Used Restraint	%	Total	Used Restraint	%	Total	Used Restraint	%	Total	Used Restraint	%
0 - 15	115	103	89.6	2	2	100.0	2	0	0.0	17	16	94.1	78	71	91.0	16	14	87.5
16 - 20	1,242	1,198	96.5	1	1	100.0	19	16	84.2	70	58	82.9	125	119	95.2	1,026	1,004	97.9
21 - 24	876	816	93.2	1	0	0.0	12	6	50.0	50	38	76.0	96	85	88.5	715	687	96.1
25 - 64	6,302	6,035	95.8	13	6	46.2	79	54	68.4	291	253	86.9	521	479	91.9	5,387	5,243	97.3
65 +	1,203	1,170	97.3	6	3	50.0	18	17	94.4	61	59	96.7	119	115	96.6	995	976	98.1
Unknown	741	0	0.0	0	0	0.0	0	0	0.0	0	0	0.0	0	0	0.0	0	0	0.0
<b>Total</b>	<b>10,479</b>	<b>9,322</b>	<b>89.0</b>	<b>23</b>	<b>12</b>	<b>52.2</b>	<b>130</b>	<b>93</b>	<b>71.5</b>	<b>489</b>	<b>424</b>	<b>86.7</b>	<b>939</b>	<b>869</b>	<b>92.5</b>	<b>8,139</b>	<b>7,924</b>	<b>97.4</b>

Note: Restraint Use includes shoulder belt only used, lap belt only used, both lap and shoulder belts used, child restraint used, restraint failure, and helmet worn.

## 5-Year Trend - Restraint Use Among Drivers

Restraint Use	2015			2016			2017			2018			2019		
	Drivers	Fatal Drivers	Injured Drivers	Drivers	Fatal Drivers	Injured Drivers	Drivers	Fatal Drivers	Injured Drivers	Drivers	Fatal Drivers	Injured Drivers	Drivers	Fatal Drivers	Injured Drivers
No belts available	55	1	12	28	0	4	25	0	6	16	0	3	21	0	0
Shoulder belt only used	5	0	0	40	0	6	36	0	6	38	0	8	35	0	1
Lap belt only used	26	0	5	23	0	5	20	0	2	11	0	4	22	0	0
Both lap & shoulder belts used	8,683	7	947	8,786	13	1,011	8,562	14	1,002	8,481	10	1,032	8,885	9	1,022
No belts used	49	2	21	61	2	40	72	8	35	51	4	23	86	4	54
Child restraint used	0	0	0	0	0	0	0	0	0	0	0	0	0	0	0
Child restraint not used, unavailable or improper use	0	0	0	0	0	0	0	0	0	0	0	0	0	0	0
Restraint failure	1	0	0	1	0	1	4	0	1	0	0	0	3	0	0
Restraint use unknown	233	0	27	601	3	28	787	1	24	838	3	28	847	2	34
Helmet worn	54	2	34	48	3	32	51	2	29	52	5	36	59	1	47
Helmet not worn	47	2	40	46	2	33	45	5	34	29	3	20	35	0	28
Helmet use unknown	6	0	3	14	0	10	3	0	1	4	0	0	4	2	2
Uncoded & errors	699	0	1	318	0	0	106	0	0	129	0	0	107	0	0
<b>Total</b>	<b>9,858</b>	<b>14</b>	<b>1,090</b>	<b>9,966</b>	<b>23</b>	<b>1,170</b>	<b>9,711</b>	<b>30</b>	<b>1,140</b>	<b>9,649</b>	<b>25</b>	<b>1,154</b>	<b>10,104</b>	<b>18</b>	<b>1,188</b>

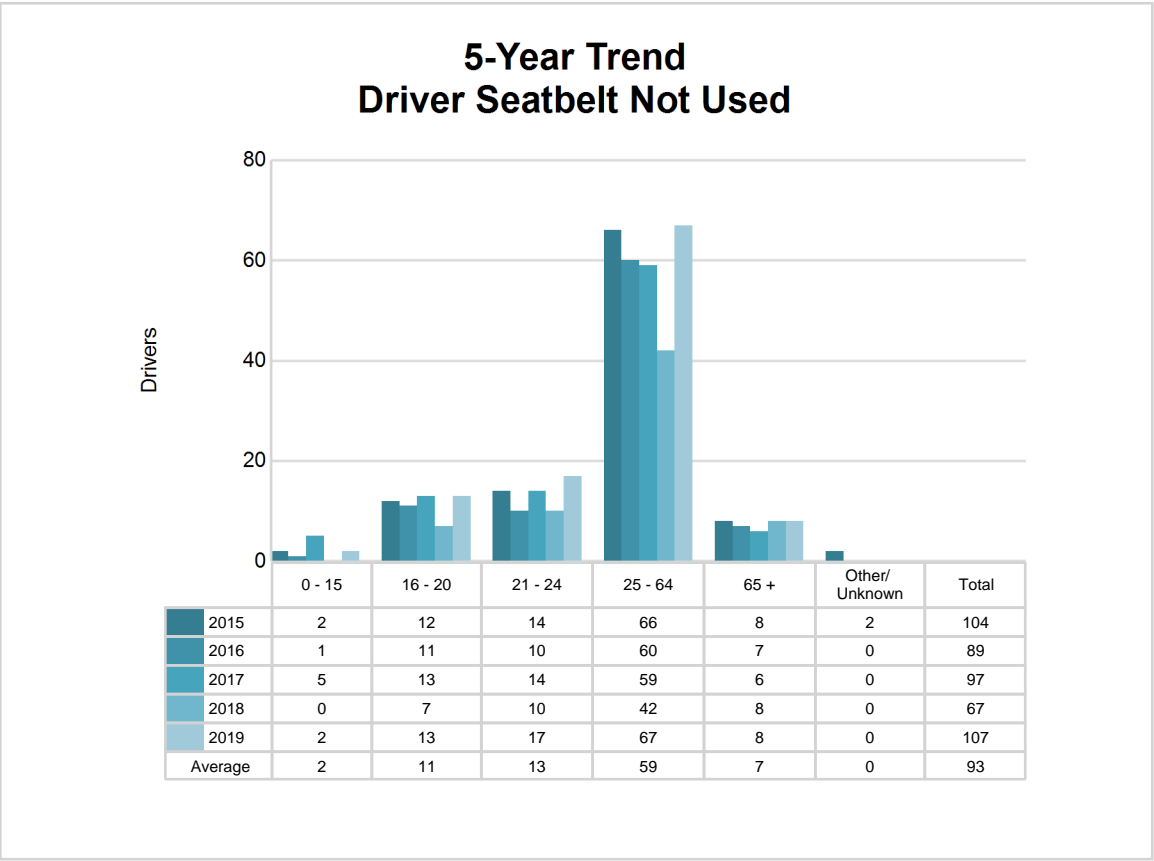
## 5-Year Trend - Restraint Use Among Drivers Coded Drinking

Restraint Use	2015			2016			2017			2018			2019		
	Drivers	Fatal Drivers	Injured Drivers	Drivers	Fatal Drivers	Injured Drivers	Drivers	Fatal Drivers	Injured Drivers	Drivers	Fatal Drivers	Injured Drivers	Drivers	Fatal Drivers	Injured Drivers
No belts available	3	0	2	0	0	0	0	0	0	1	0	0	0	0	0
Shoulder belt only used	0	0	0	5	0	0	0	0	0	2	0	0	0	0	0
Lap belt only used	2	0	1	1	0	0	0	0	0	0	0	0	1	0	0
Both lap & shoulder belts used	197	1	53	178	1	62	212	2	63	209	3	55	231	0	61
No belts used	11	0	7	19	1	14	25	5	10	18	3	9	32	1	23
Child restraint used	0	0	0	0	0	0	0	0	0	0	0	0	0	0	0
Child restraint not used, unavailable or improper use	0	0	0	0	0	0	0	0	0	0	0	0	0	0	0
Restraint failure	0	0	0	0	0	0	0	0	0	0	0	0	0	0	0
Restraint use unknown	30	0	11	39	0	15	61	1	11	42	2	7	51	0	10
Helmet worn	3	0	3	4	0	4	3	1	2	2	2	0	2	0	2
Helmet not worn	8	2	6	4	0	4	8	3	5	4	2	2	7	0	7
Helmet use unknown	0	0	0	0	0	0	0	0	0	0	0	0	1	1	0
Uncoded & errors	0	0	0	1	0	0	0	0	0	0	0	0	0	0	0
<b>Total</b>	<b>254</b>	<b>3</b>	<b>83</b>	<b>251</b>	<b>2</b>	<b>99</b>	<b>309</b>	<b>12</b>	<b>91</b>	<b>278</b>	<b>12</b>	<b>73</b>	<b>325</b>	<b>2</b>	<b>103</b>

5-Year Trend - Seatbelt Not Used Among Drivers by Age

Age Group	2015			2016			2017			2018			2019		
	Drivers	Fatal Drivers	Injured Drivers	Drivers	Fatal Drivers	Injured Drivers	Drivers	Fatal Drivers	Injured Drivers	Drivers	Fatal Drivers	Injured Drivers	Drivers	Fatal Drivers	Injured Drivers
0 - 15	2	0	1	1	0	0	5	0	3	0	0	0	2	0	0
16 - 20	12	1	5	11	0	5	13	0	6	7	0	3	13	0	5
21 - 24	14	0	7	10	1	4	14	3	5	10	0	6	17	1	15
25 - 64	66	2	19	60	1	31	59	5	26	42	4	15	67	2	31
65 +	8	0	0	7	0	4	6	0	1	8	0	2	8	1	3
Unknown	2	0	1	0	0	0	0	0	0	0	0	0	0	0	0
Total	104	3	33	89	2	44	97	8	41	67	4	26	107	4	54

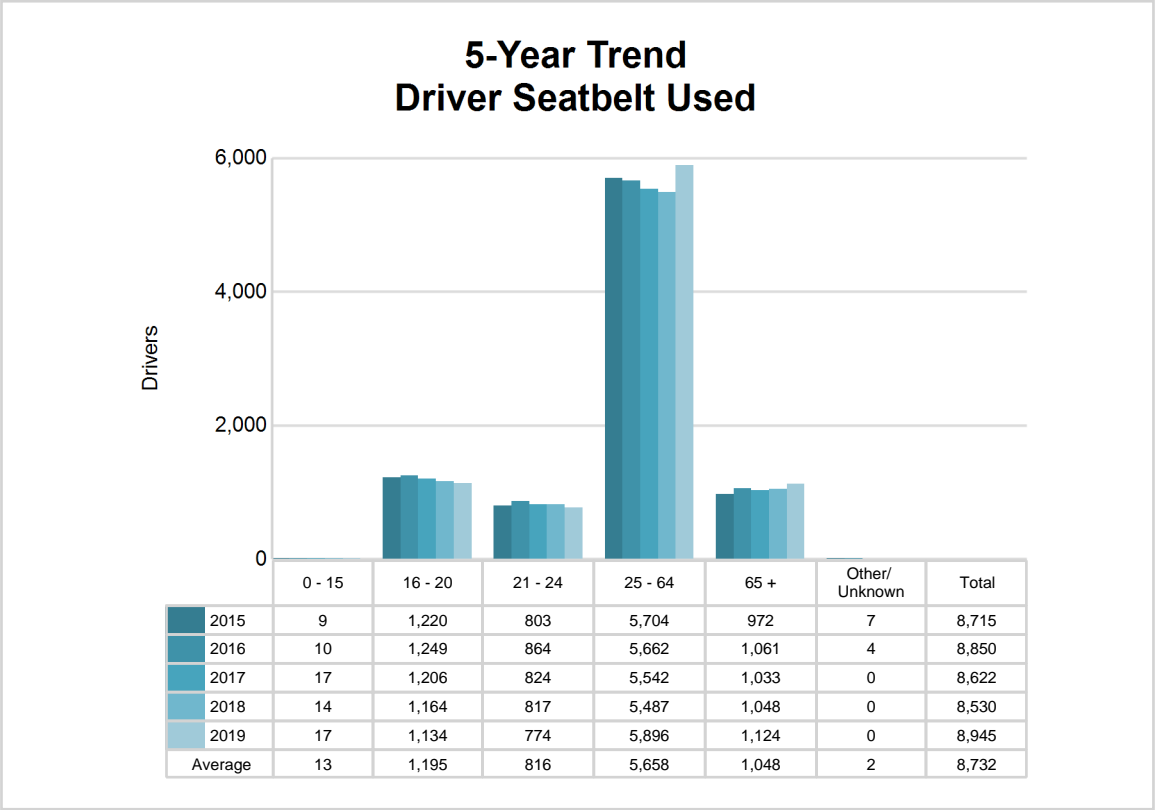
Note: Seatbelt Not Used includes no belts available or no belts used.



5-Year Trend - Seatbelt Used Among Drivers by Age

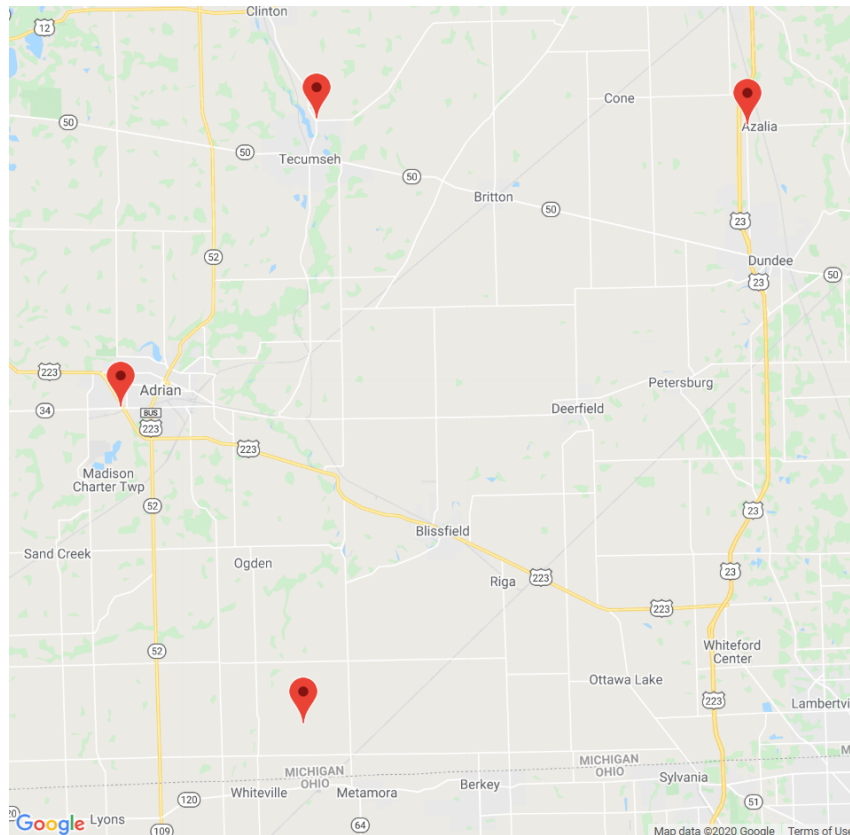
Age Group	2015			2016			2017			2018			2019		
	Drivers	Fatal Drivers	Injured Drivers	Drivers	Fatal Drivers	Injured Drivers	Drivers	Fatal Drivers	Injured Drivers	Drivers	Fatal Drivers	Injured Drivers	Drivers	Fatal Drivers	Injured Drivers
0 - 15	9	0	0	10	0	0	17	0	2	14	0	3	17	0	3
16 - 20	1,220	2	159	1,249	0	162	1,206	0	157	1,164	2	130	1,134	1	132
21 - 24	803	1	81	864	1	108	824	2	105	817	1	84	774	0	89
25 - 64	5,704	4	594	5,662	10	607	5,542	7	628	5,487	4	687	5,896	5	653
65 +	972	0	118	1,061	2	146	1,033	5	119	1,048	3	140	1,124	3	146
Unknown	7	0	0	4	0	0	0	0	0	0	0	0	0	0	0
Total	8,715	7	952	8,850	13	1,023	8,622	14	1,011	8,530	10	1,044	8,945	9	1,023

Note: Seatbelt Used includes shoulder belt only used, lap belt only used, both lap and shoulder belts used, and restraint failure.



## 5-Year Trend - Drivers in Crashes by Hazardous Action

Hazardous Action	2015		2016		2017		2018		2019	
	Total Drivers in Crashes	Drivers in Fatal Crashes	Total Drivers in Crashes	Drivers in Fatal Crashes	Total Drivers in Crashes	Drivers in Fatal Crashes	Total Drivers in Crashes	Drivers in Fatal Crashes	Total Drivers in Crashes	Drivers in Fatal Crashes
None	5,123	16	5,076	25	4,741	30	4,813	17	5,081	21
Speed too fast	752	4	691	5	751	7	745	5	761	0
Speed too slow	4	0	0	0	2	0	1	0	2	0
Failed to yield	786	1	917	1	870	5	888	4	878	3
Disregard traffic control	170	1	171	3	144	3	137	0	149	2
Drove wrong way	3	0	5	0	3	0	6	0	2	0
Drove left of center	84	1	55	3	55	0	66	2	65	4
Improper passing	52	0	62	3	67	0	64	0	52	1
Improper lane use	207	0	233	0	213	0	199	0	223	0
Improper turn	81	0	82	0	66	0	58	0	84	0
Improper/no signal	16	0	16	0	11	0	9	0	9	0
Improper backing	160	0	182	0	174	0	149	0	148	0
Unable to stop in assured clear distance	1,102	2	1,121	2	1,117	2	999	0	1,111	3
Other	323	1	330	1	298	0	337	3	289	2
Unknown	198	5	280	3	363	5	377	4	417	5
Reckless driving	66	1	63	1	85	5	62	4	75	1
Careless/negligent driving	725	4	669	4	663	6	630	7	661	4
Uncoded & errors	6	0	13	0	88	0	109	0	97	0
<b>Total</b>	<b>9,858</b>	<b>36</b>	<b>9,966</b>	<b>51</b>	<b>9,711</b>	<b>63</b>	<b>9,649</b>	<b>46</b>	<b>10,104</b>	<b>46</b>



The picture above represents all 2019 alcohol-involved fatal crashes in Post 14.

In 2019, there were 331 alcohol-involved crashes in Post 14:

4	K - Fatal Crashes
30	A - Suspected Serious Injury Crashes
50	B - Suspected Minor Injury Crashes
52	C - Possible Injury Crashes
195	O - Property Damage Only/No Injury Crashes

### Office of Highway Safety Planning

---

Physical Address:  
7150 Harris Drive  
Dimondale, Michigan 48821

Mailing Address:  
P.O. Box 30634  
Lansing, Michigan 48909

Phone: (517) 284-3112  
Fax: (517) 284-3151

Find us on the web:  
[MichiganTrafficCrashFacts.org](http://MichiganTrafficCrashFacts.org)

