



2019

**MTCF**  
Michigan Traffic  
Crash Facts

# Michigan Traffic Crash Facts

## Reporting Criteria

Please pay particular attention to the wording when interpreting the three levels of data gathered for this report.

### Crash

The Crash Level analyzes data related to crash events and returns one result per crash.

Examples: Time, weather, and location.

### Units

The Units Level analyzes the experience of the units in the crash and returns one result per vehicle, driver, pedestrian, bicyclist, or train.

Examples: Vehicle type, driver condition, and unit events.

### People

The People Level analyzes the experience of the people involved in the crash and returns one result per occupant/person/party.

Examples: Age, injury severity, and seat belt or helmet use.

### **KABCO Injury Indicator:**

K = Killed

A = Suspected Serious Injury

B = Suspected Minor Injury

C = Possible Injury

O = No Injury

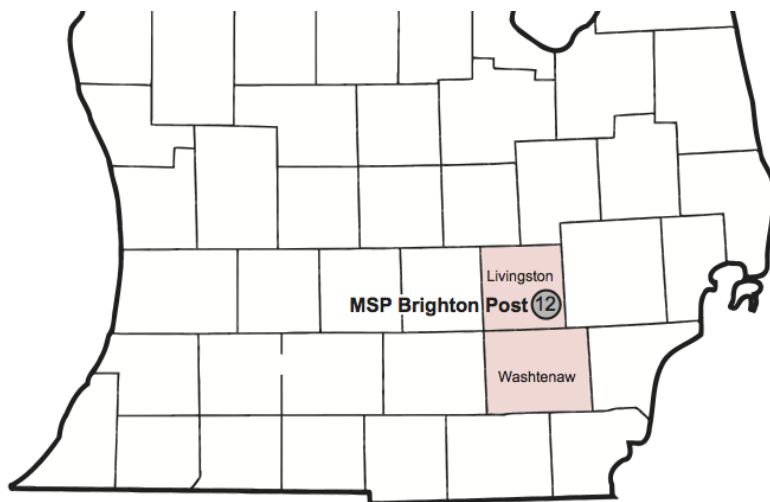
Property Damage Only (PDO)



## Michigan State Police (MSP) Post 12 - Brighton

### 2019 Traffic Crash Data & 2015-2019 5-Year Trends

Post 12 is comprised of Livingston and Washtenaw counties. Trend tables for this report are based on those counties.



### Sources:

The crashes in this report occurred on public roadways in Michigan and resulted in injuries, fatalities, or property damage (with \$1,000 as a reporting threshold). The information was gathered from Michigan Traffic Crash Report Forms (UD-10) submitted by local police departments, sheriff's offices, and the Michigan State Police. Other related information was obtained from the departments of Transportation, State, and Community Health.

This page left intentionally blank

## MSP Post 12 - Brighton

- There were 16,372 crashes in Post 12 during 2019. [Page 1]
- A total of 42 fatalities resulted from 38 fatal crashes in 2019 in Post 12. [Page 1]
- There were 3,374 injuries and 2,576 injury crashes. [Page 1]
- There were 13,758 property damage only crashes (no fatalities or injuries). [Page 1]
- November had the highest number of crashes (1,796). [Pages 1-2]
- November had the highest number of fatal crashes (8) and fatalities (8). [Pages 1-2]
- July had the highest number of injury crashes (277) and injuries (358). [Page 1]
- November had the highest number of property damage only crashes (1,581). [Page 1]
- Of all vehicles involved in fatal crashes, 8 (11.4%) were motorcycles. [Page 1]
- Monday was the day of the week with the highest number of crashes (2,660) and Saturday had the highest number of fatal crashes (9). [Pages 2-3]
- The 3:00 PM - 5:59 PM time period had the highest number of crashes (4,049). This holds true for every year between 2015 and 2019. The 3:00 PM - 5:59 PM time period had the highest number of fatal crashes (8). [Pages 5-6]
- During the period from 2015 to 2019, the highest number of deer crashes occurred in 2019 (1,984). The 6:00 PM - 8:59 PM time period had the highest number of deer-involved crashes. There were 0 fatal crashes involving deer in 2019. [Pages 7-8]
- Washtenaw County (69.3%) had the highest number of crashes in Post 12 in 2019, followed by Livingston County (30.7%). [Page 8]
- Washtenaw County (61.9%) had the highest number of fatalities in Post 12 in 2019, followed by Livingston County (38.1%). [Page 8]
- The highest number of drivers in crashes (29,717) occurred during 2016 and the highest number of drivers coded drinking in crashes (538) occurred during 2017 within the five year period between 2015 and 2019. [Page 9]
- A total of 492 crashes involved alcohol in 2019. [Page 11]
- Alcohol-involved fatal crashes were the highest in 2017 during the five-year period from 2015 to 2019 at 18. [Page 11]
- A total of 171 crashes, 7 fatal crashes, and 18 suspected serious injury crashes involved drugs in 2019. [Page 12]
- There were 25,971 drivers wearing seatbelts and 155 drivers not wearing seatbelts in crashes in 2019. Of the 155 drivers not wearing seat belts, 6 (3.9%) were killed and 65 (41.9%) were injured. [Pages 15-17]
- The most common hazardous action coded for drivers in 2019 in all crashes was unable to stop in assured clear distance (4,648), while the most common hazardous action coded for drivers in fatal crashes was other (9). [Page 18]

# MSP Post 12 - Brighton (continued)

## Post 12 Experience

In 2019:

There were 28,646 drivers involved in 16,372 motor vehicle crashes in MSP Post 12. Of those crashes, 38 were classified as fatal, resulting in 42 fatalities. An additional 3,374 persons were injured.

Post 12 experienced the highest number of motor vehicle crashes (1,796) in November, the highest number of fatal crashes (8) and the highest number of persons killed (8) in November.

Michigan driver statistics indicate 6.9 percent of licensed drivers in Post 12 were age 16-20, and 11.1 percent of drivers in crashes were also in that age group.

## 2019 - Crashes and Injuries by Month

Month	Crashes				Persons	
	Total	Fatal	Injury	Property Damage Only (PDO)	Fatalities	Injuries
January	1,582	3	225	1,354	3	283
February	1,401	0	191	1,210	0	231
March	1,183	4	179	1,000	5	244
April	1,131	6	185	940	6	289
May	1,273	1	204	1,068	3	265
June	1,268	4	215	1,049	4	267
July	1,263	0	277	986	0	358
August	1,223	5	222	996	5	300
September	1,276	0	225	1,051	0	285
October	1,618	3	250	1,365	4	311
November	1,796	8	207	1,581	8	270
December	1,358	4	196	1,158	4	271
<b>Total</b>	<b>16,372</b>	<b>38</b>	<b>2,576</b>	<b>13,758</b>	<b>42</b>	<b>3,374</b>

## 2019 - Driver Statistics

Age Group	Post 12			Driver Rates	
	2019 Population	Licensed Drivers	Drivers in Crashes	Per 10k Population	Per 10k Licensed
0 - 15	94,308	3,429	46	4.9	134.1
16 - 20	50,549	28,513	3,182	629.5	1,116.0
21 - 24	45,243	28,912	2,996	662.2	1,036.2
25 - 64	281,757	273,178	17,678	627.4	647.1
65 +	87,739	81,581	2,901	330.6	355.6
Unknown	0	0	1,843	--	--
<b>Total</b>	<b>559,596</b>	<b>415,613</b>	<b>28,646</b>	<b>511.9</b>	<b>689.2</b>

## 2019 - Vehicles in Crashes

Vehicle Type	Motor Vehicles		Fatal Crashes		Injury Crashes	PDO Crashes
	Number of Vehicles	% of Total	Number	% of Total	Number	Number
Passenger car, SUV, van	24,293	84.8	42	60.0	3,971	20,280
Motor home	117	0.4	0	0.0	28	89
Pickup truck	2,539	8.9	12	17.1	411	2,116
Small truck under 10,000 lbs. GVWR	114	0.4	0	0.0	16	98
Motorcycle	141	0.5	8	11.4	101	32
Moped / goped	20	0.1	0	0.0	15	5
Go-cart / golf cart	1	0.0	0	0.0	0	1
Snowmobile	1	0.0	0	0.0	1	0
Off-Road Vehicle - ORV / All-Terrain Vehicle - ATV	5	0.0	0	0.0	3	2
Other	77	0.3	0	0.0	9	68
Truck/bus over 10,000 lbs.	990	3.5	8	11.4	164	818
Unknown	348	1.2	0	0.0	21	327
<b>Total</b>	<b>28,646</b>	<b>100.0</b>	<b>70</b>	<b>100.0</b>	<b>4,740</b>	<b>23,836</b>

## 5-Year Trend - Crashes by Month

Month	2015		2016		2017		2018		2019	
	Total Crashes	Fatal Crashes	Total Crashes	Fatal Crashes	Total Crashes	Fatal Crashes	Total Crashes	Fatal Crashes	Total Crashes	Fatal Crashes
January	1,818	4	1,463	3	1,313	5	1,684	4	1,582	3
February	1,384	1	1,374	3	1,058	3	1,381	4	1,401	0
March	1,054	2	1,349	2	1,388	3	1,311	4	1,183	4
April	987	2	1,249	2	1,079	5	1,163	3	1,131	6
May	1,160	3	1,250	3	1,274	6	1,237	2	1,273	1
June	1,263	1	1,292	2	1,211	5	1,204	3	1,268	4
July	1,123	7	1,256	7	1,076	7	1,091	4	1,263	0
August	1,133	3	1,244	5	1,136	4	1,166	4	1,223	5
September	1,291	2	1,409	7	1,221	3	1,223	4	1,276	0
October	1,524	7	1,465	3	1,619	5	1,534	2	1,618	3
November	1,749	3	1,589	3	1,658	5	1,643	0	1,796	8
December	1,330	3	1,691	3	1,908	2	1,364	3	1,358	4
<b>Total</b>	<b>15,816</b>	<b>38</b>	<b>16,631</b>	<b>43</b>	<b>15,941</b>	<b>53</b>	<b>16,001</b>	<b>37</b>	<b>16,372</b>	<b>38</b>

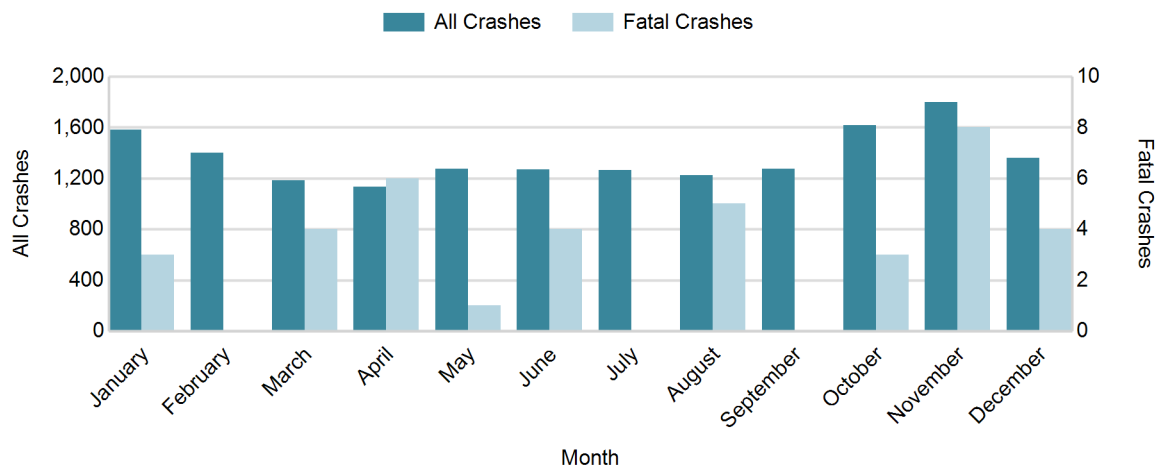
Note: † Indicates that the highest number of total crashes reported in the 5-year period occurred in the same month

## 5-Year Trend - Crashes by Day of Week

Day	2015		2016		2017		2018		2019	
	Total Crashes	Fatal Crashes	Total Crashes	Fatal Crashes	Total Crashes	Fatal Crashes	Total Crashes	Fatal Crashes	Total Crashes	Fatal Crashes
Monday	2,338	2	2,344	7	2,374	7	2,354	3	2,660	6
Tuesday	2,422	3	2,600	6	2,439	8	2,637	6	2,544	4
Wednesday	2,547	12	2,742	6	2,422	12	2,385	7	2,657	8
Thursday	2,273	7	2,697	6	2,562	5	2,654	2	2,497	3
Friday	2,626	7	2,807	8	2,718	7	2,665	6	2,636	3
Saturday	2,079	5	1,950	7	1,860	6	1,915	6	1,832	9
Sunday	1,531	2	1,491	3	1,566	8	1,391	7	1,546	5
<b>Total</b>	<b>15,816</b>	<b>38</b>	<b>16,631</b>	<b>43</b>	<b>15,941</b>	<b>53</b>	<b>16,001</b>	<b>37</b>	<b>16,372</b>	<b>38</b>

Note: † Indicates that the highest number of total crashes reported in the 5-year period occurred on the same day of the week

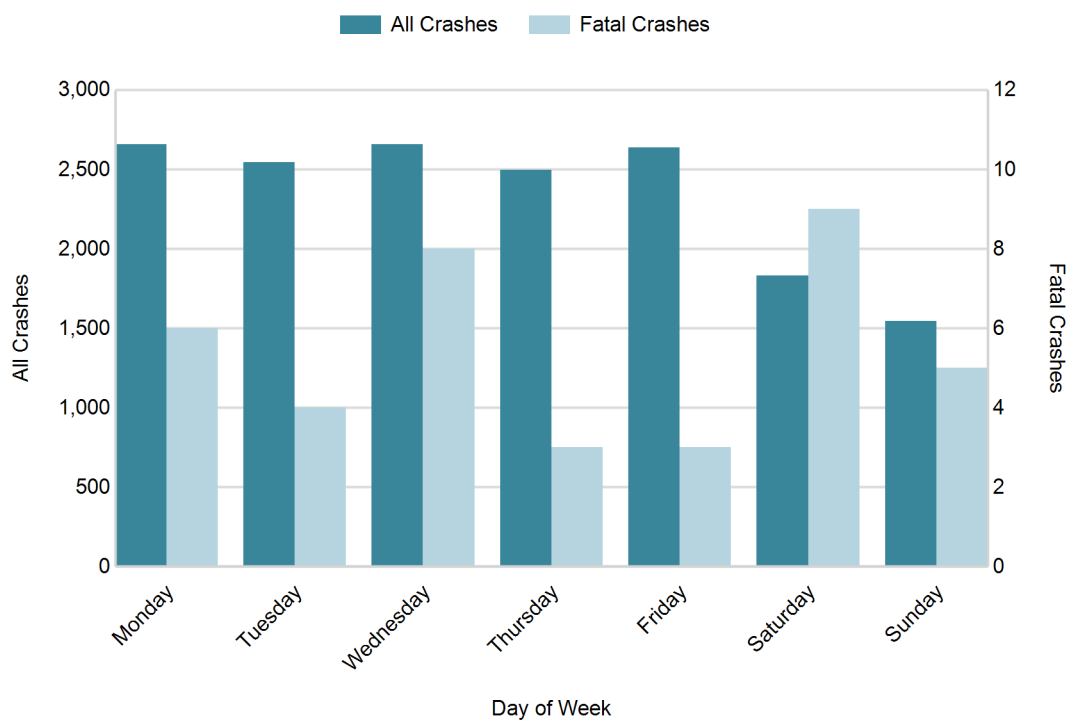
## 2019 Crashes by Month



## 2019 - Crashes by Day of Week

Day	All Crashes		Fatal Crashes		Injury Crashes			PDO Crashes
	Number	% of Total	Number	% of Fatal	A	B	C	Number
Monday	2,660	16.2	6	15.8	27	146	230	2,251
Tuesday	2,544	15.5	4	10.5	19	139	247	2,135
Wednesday	2,657	16.2	8	21.1	29	145	246	2,229
Thursday	2,497	15.3	3	7.9	26	133	218	2,117
Friday	2,636	16.1	3	7.9	39	139	248	2,207
Saturday	1,832	11.2	9	23.7	17	116	141	1,549
Sunday	1,546	9.4	5	13.2	25	101	145	1,270
<b>Total</b>	<b>16,372</b>	<b>100.0</b>	<b>38</b>	<b>100.0</b>	<b>182</b>	<b>919</b>	<b>1,475</b>	<b>13,758</b>

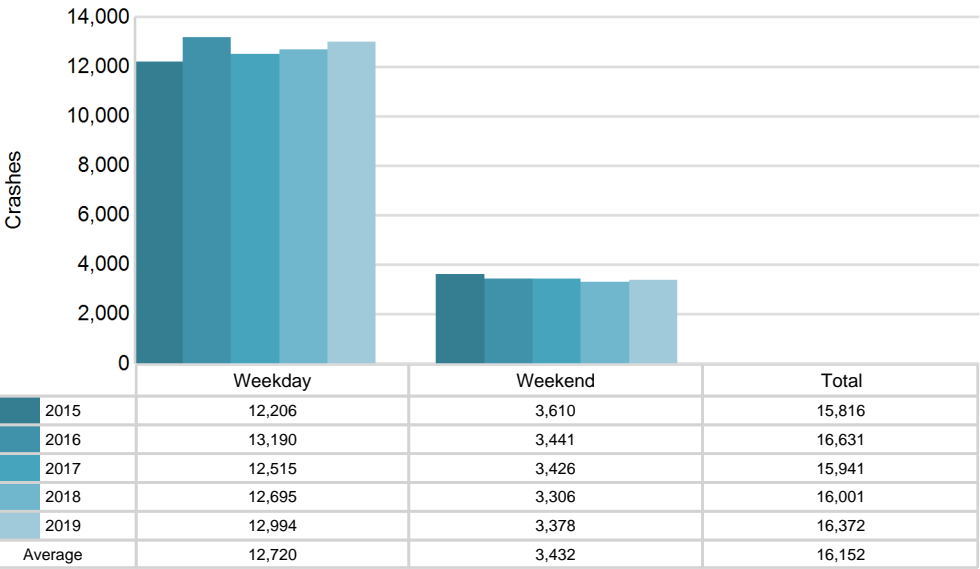
## 2019 Day of Week and Severity



5-Year Trend - Crashes by Weekday and Weekend

Portion of Week	2015		2016		2017		2018		2019	
	Total Crashes	Fatal Crashes	Total Crashes	Fatal Crashes	Total Crashes	Fatal Crashes	Total Crashes	Fatal Crashes	Total Crashes	Fatal Crashes
Weekday	12,206	31	13,190	33	12,515	39	12,695	24	12,994	24
Weekend	3,610	7	3,441	10	3,426	14	3,306	13	3,378	14
Total	15,816	38	16,631	43	15,941	53	16,001	37	16,372	38

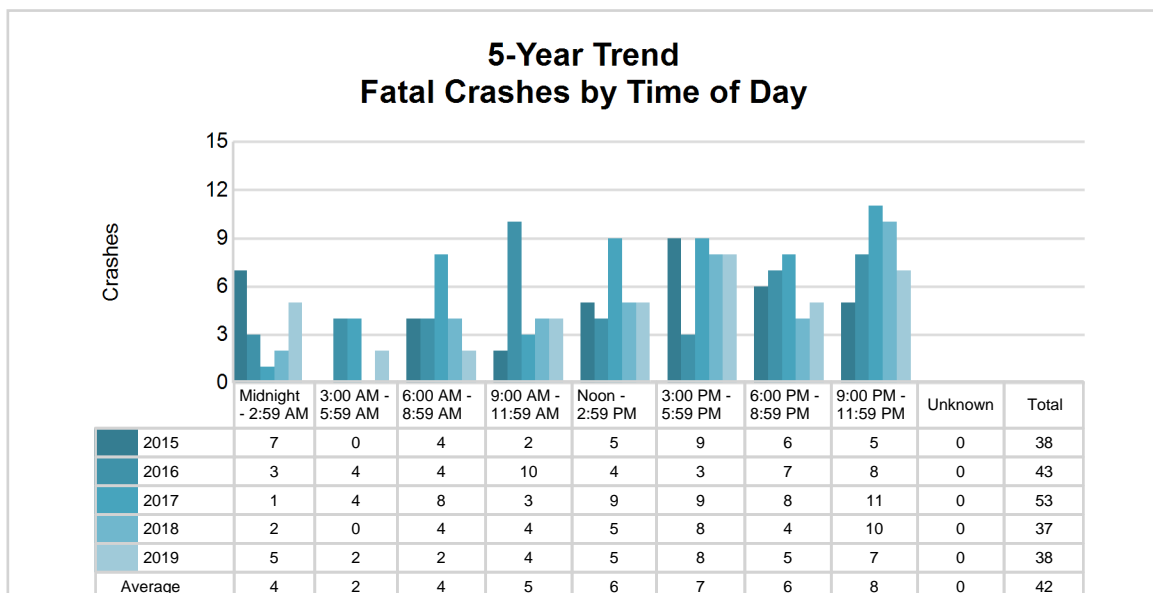
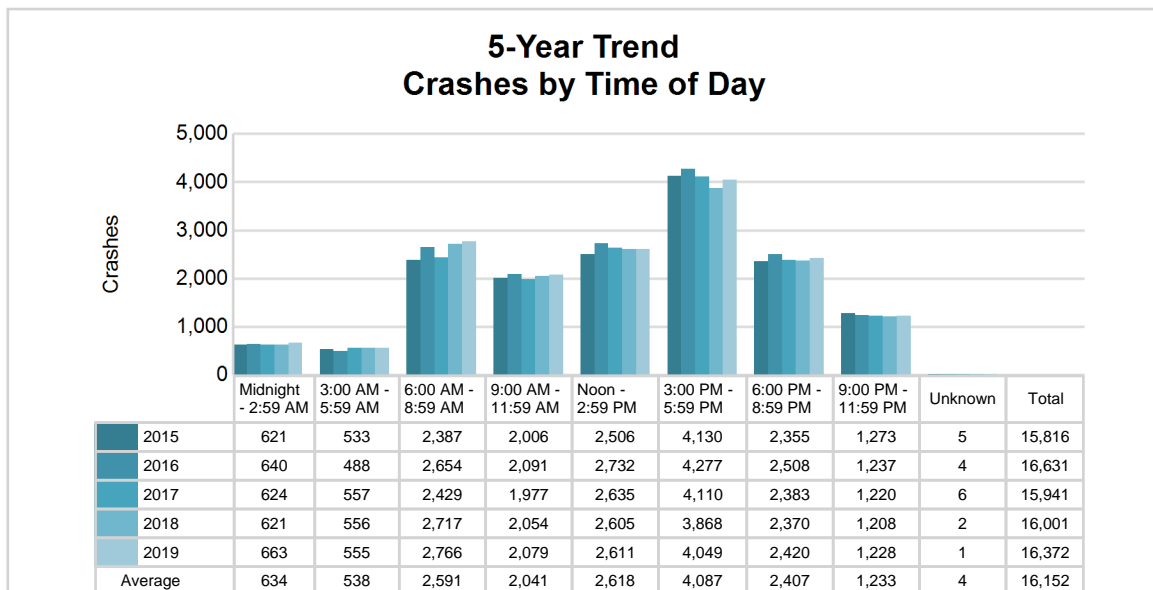
5-Year Crash Trends by Weekday (Monday - Friday) and Weekend (Saturday & Sunday)



## 5-Year Trend - Crashes by Time of Day

Time of Day	2015		2016		2017		2018		2019	
	Total Crashes	Fatal Crashes	Total Crashes	Fatal Crashes	Total Crashes	Fatal Crashes	Total Crashes	Fatal Crashes	Total Crashes	Fatal Crashes
Midnight - 2:59 AM	621	7	640	3	624	1	621	2	663	5
3:00 AM - 5:59 AM	533	0	488	4	557	4	556	0	555	2
6:00 AM - 8:59 AM	2,387	4	2,654	4	2,429	8	2,717	4	2,766	2
9:00 AM - 11:59 AM	2,006	2	2,091	10	1,977	3	2,054	4	2,079	4
Noon - 2:59 PM	2,506	5	2,732	4	2,635	9	2,605	5	2,611	5
3:00 PM - 5:59 PM	4,130 †	9	4,277 †	3	4,110 †	9	3,868 †	8	4,049 †	8
6:00 PM - 8:59 PM	2,355	6	2,508	7	2,383	8	2,370	4	2,420	5
9:00 PM - 11:59 PM	1,273	5	1,237	8	1,220	11	1,208	10	1,228	7
Unknown	5	0	4	0	6	0	2	0	1	0
<b>Total</b>	<b>15,816</b>	<b>38</b>	<b>16,631</b>	<b>43</b>	<b>15,941</b>	<b>53</b>	<b>16,001</b>	<b>37</b>	<b>16,372</b>	<b>38</b>

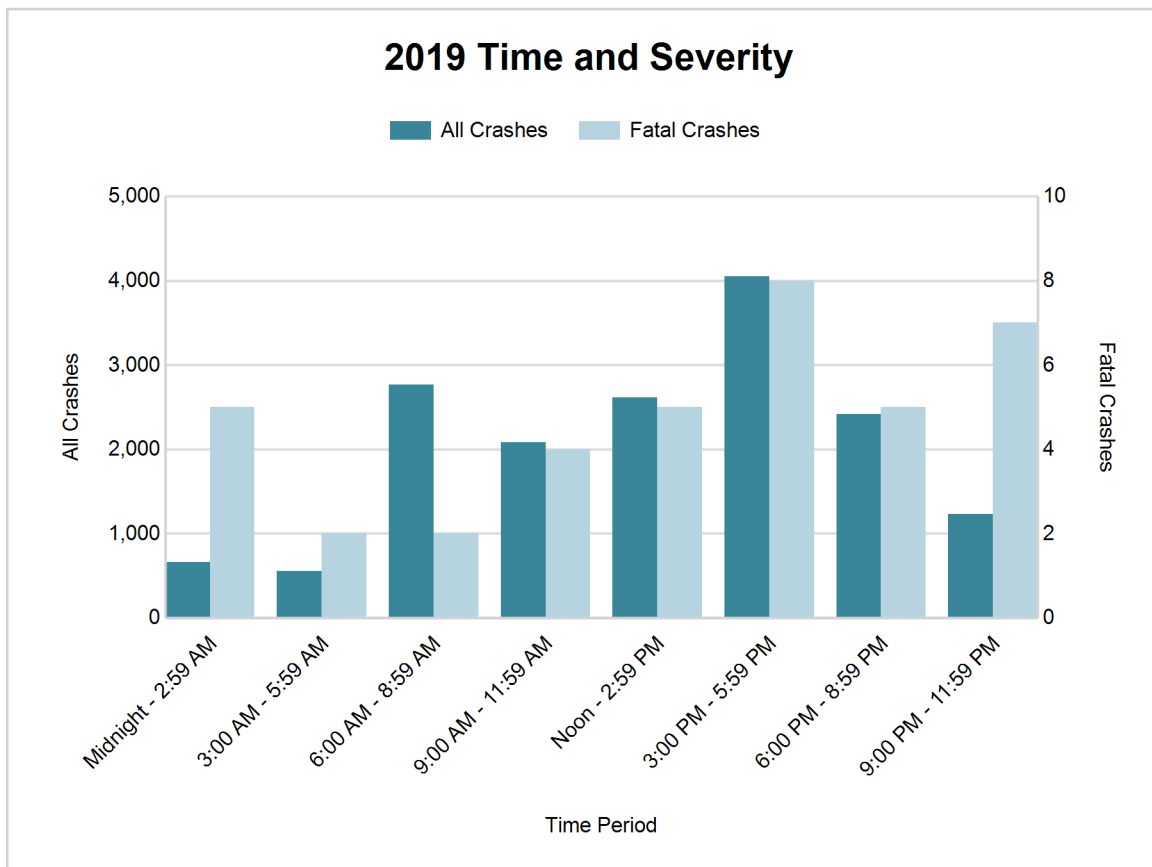
Note: † Indicates that the highest number of total crashes reported in the 5-year period occurred in the same time period





## 2019 - Time and Severity

Time of Day	All Crashes		Fatal Crashes		Injury Crashes			PDO Crashes
	Number	% of Total	Number	% of Fatal	A	B	C	Number
Midnight - 2:59 AM	663	4.0	5	13.2	22	60	46	530
3:00 AM - 5:59 AM	555	3.4	2	5.3	8	33	43	469
6:00 AM - 8:59 AM	2,766	16.9	2	5.3	27	114	247	2,376
9:00 AM - 11:59 AM	2,079	12.7	4	10.5	21	116	168	1,770
Noon - 2:59 PM	2,611	15.9	5	13.2	30	146	280	2,150
3:00 PM - 5:59 PM	4,049	24.7	8	21.1	29	235	385	3,392
6:00 PM - 8:59 PM	2,420	14.8	5	13.2	33	148	206	2,028
9:00 PM - 11:59 PM	1,228	7.5	7	18.4	12	67	100	1,042
Unknown	1	0.0	0	0.0	0	0	0	1
<b>Total</b>	<b>16,372</b>	<b>100.0</b>	<b>38</b>	<b>100.0</b>	<b>182</b>	<b>919</b>	<b>1,475</b>	<b>13,758</b>

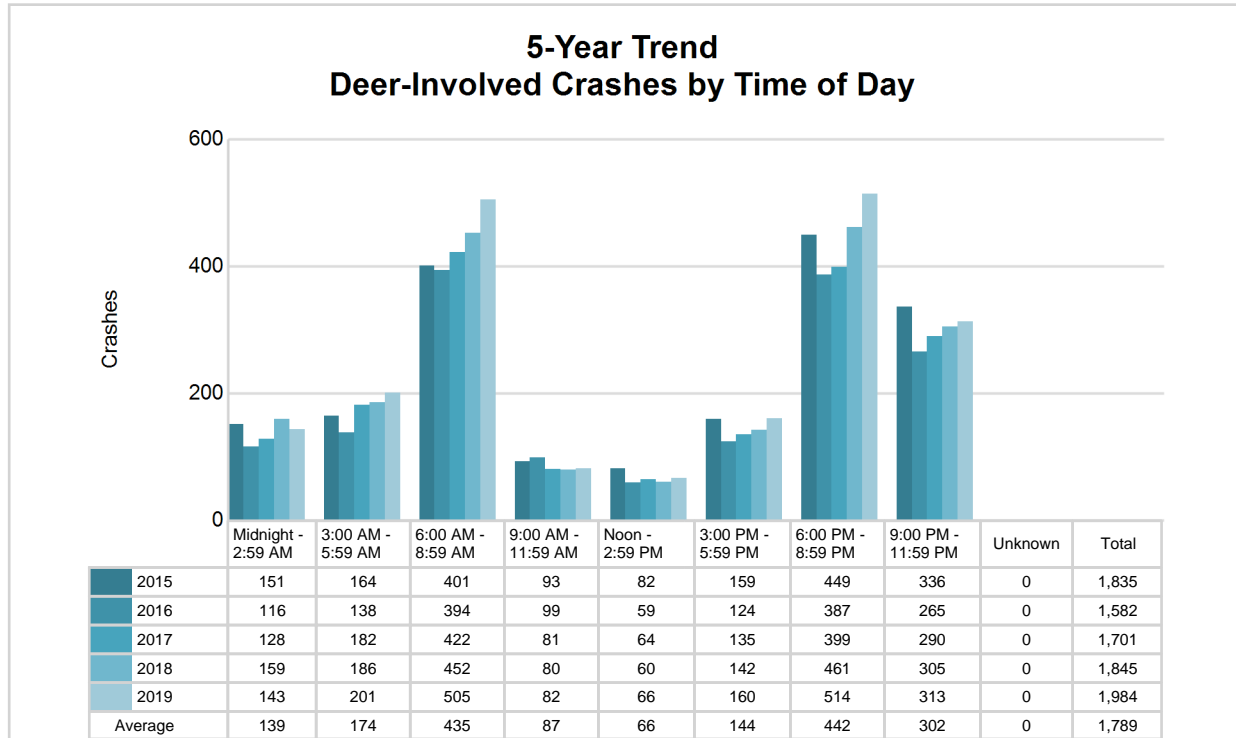


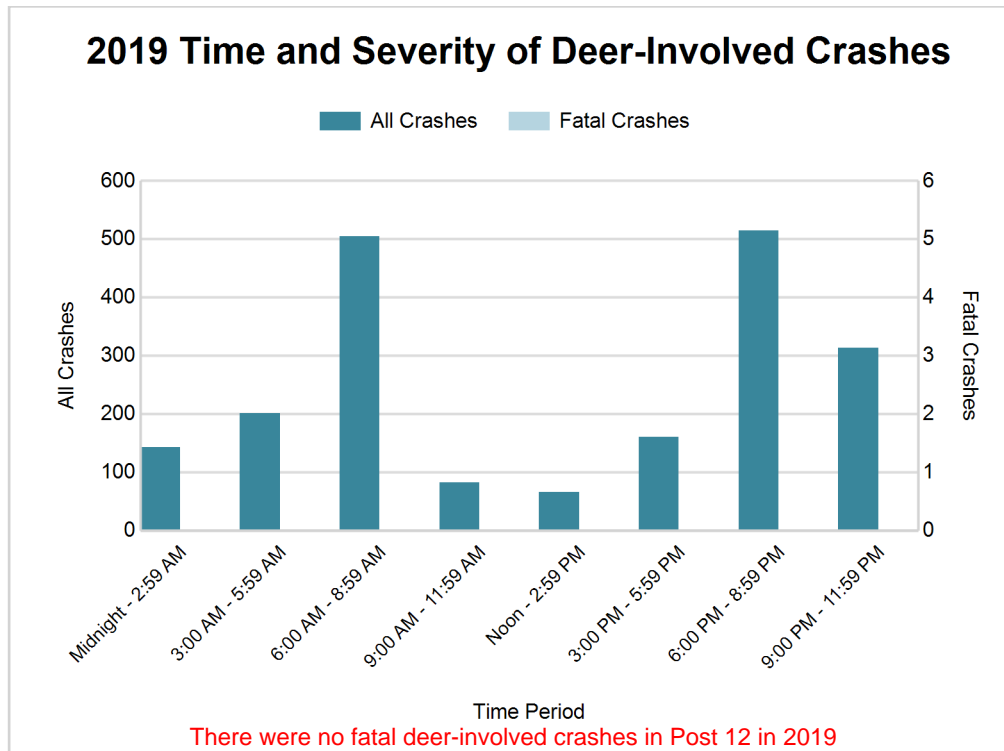
## MSP Post 12 - Brighton (continued)

### 5-Year Trend - Deer-Involved Crashes by Time of Day

Time of Day	2015		2016		2017		2018		2019	
	Total Crashes	Fatal Crashes	Total Crashes	Fatal Crashes	Total Crashes	Fatal Crashes	Total Crashes	Fatal Crashes	Total Crashes	Fatal Crashes
Midnight - 2:59 AM	151	0	116	0	128	0	159	0	143	0
3:00 AM - 5:59 AM	164	0	138	0	182	1	186	0	201	0
6:00 AM - 8:59 AM	401	0	394	0	422	0	452	0	505	0
9:00 AM - 11:59 AM	93	0	99	0	81	0	80	0	82	0
Noon - 2:59 PM	82	0	59	0	64	0	60	0	66	0
3:00 PM - 5:59 PM	159	0	124	0	135	0	142	0	160	0
6:00 PM - 8:59 PM	449	1	387	0	399	0	461	0	514	0
9:00 PM - 11:59 PM	336	0	265	0	290	0	305	0	313	0
Unknown	0	0	0	0	0	0	0	0	0	0
<b>Total</b>	<b>1,835</b>	<b>1</b>	<b>1,582</b>	<b>0</b>	<b>1,701</b>	<b>1</b>	<b>1,845</b>	<b>0</b>	<b>1,984</b>	<b>0</b>

Note: † Indicates that the highest number of total crashes reported in the 5-year period occurred in the same time period





#### 2019 - Reported Motor Vehicle Crashes by County

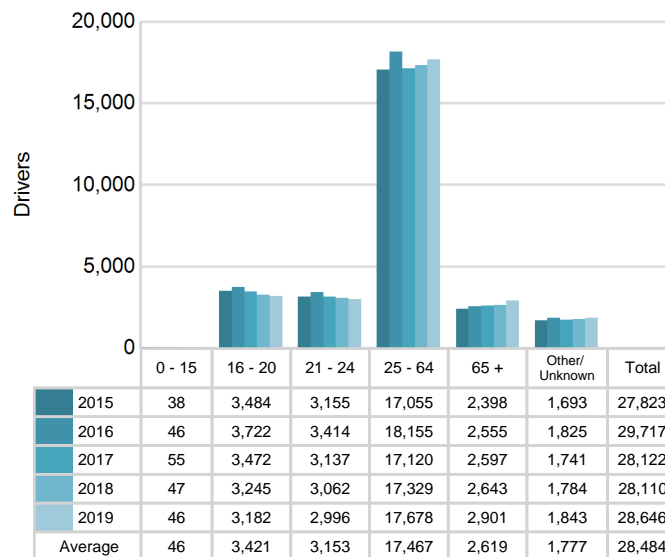
County	Crashes											Persons	
	Total	Fatal	Injury	Property Damage	Inter-state	US Route	State Route	Local Street	Alcohol-Involved	Drug-Involved	Deer-Involved	Fatalities	Injuries
Livingston	5,019	14	693	4,312	1,097	760	627	2,510	185	56	878	16	956
Washtenaw	11,353	24	1,883	9,446	1,658	1,894	1,080	6,706	307	115	1,106	26	2,418
<b>Total</b>	<b>16,372</b>	<b>38</b>	<b>2,576</b>	<b>13,758</b>	<b>2,755</b>	<b>2,654</b>	<b>1,707</b>	<b>9,216</b>	<b>492</b>	<b>171</b>	<b>1,984</b>	<b>42</b>	<b>3,374</b>

# MSP Post 12 - Brighton (continued)

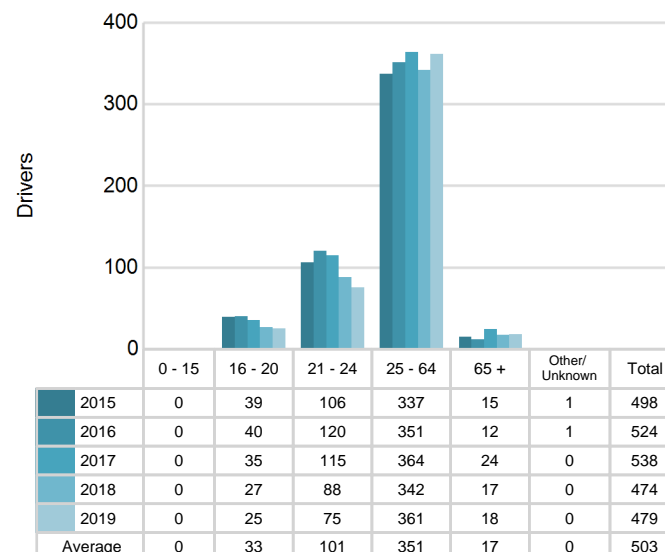
## 5-Year Trend - Drivers in Crashes Coded Drinking by Driver Age

Driver Age	2015		2016		2017		2018		2019	
	Total Drivers in Crashes	Total Drivers Coded Drinking	Total Drivers in Crashes	Total Drivers Coded Drinking	Total Drivers in Crashes	Total Drivers Coded Drinking	Total Drivers in Crashes	Total Drivers Coded Drinking	Total Drivers in Crashes	Total Drivers Coded Drinking
0 - 15	38	0	46	0	55	0	47	0	46	0
16 - 20	3,484	39	3,722	40	3,472	35	3,245	27	3,182	25
21 - 24	3,155	106	3,414	120	3,137	115	3,062	88	2,996	75
25 - 64	17,055	337	18,155	351	17,120	364	17,329	342	17,678	361
65 +	2,398	15	2,555	12	2,597	24	2,643	17	2,901	18
Unknown	1,693	1	1,825	1	1,741	0	1,784	0	1,843	0
<b>Total</b>	<b>27,823</b>	<b>498</b>	<b>29,717</b>	<b>524</b>	<b>28,122</b>	<b>538</b>	<b>28,110</b>	<b>474</b>	<b>28,646</b>	<b>479</b>

**5-Year Trend  
Total Drivers in Crashes by Age**



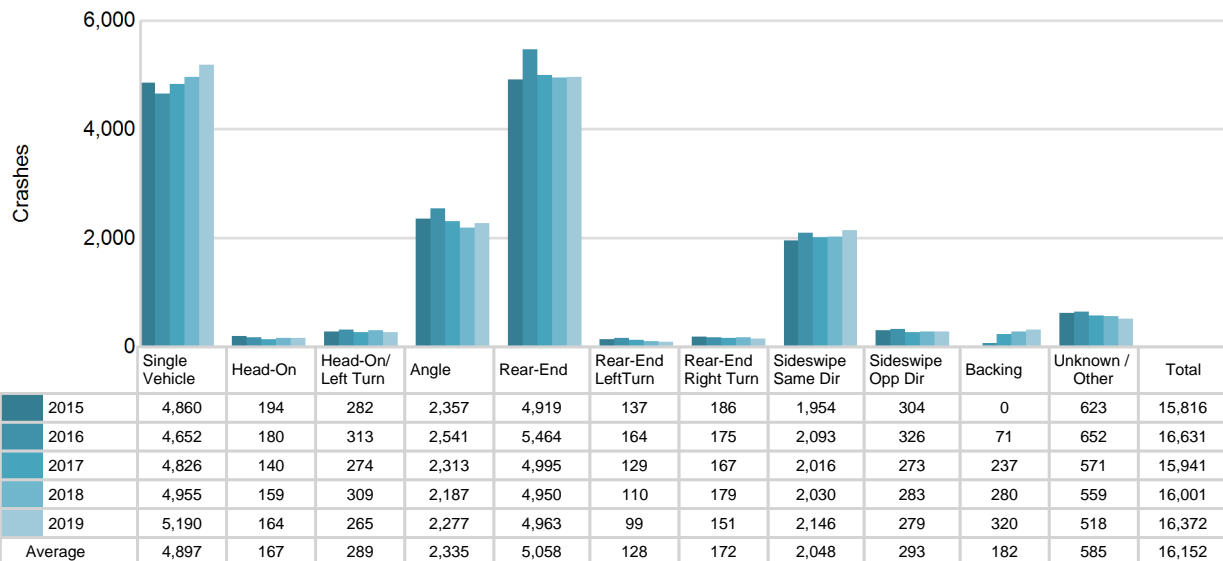
**5-Year Trend  
Total Drivers Coded Drinking by Age**



## 5-Year Trend - Crashes by Crash Type

Crash Type	2015		2016		2017		2018		2019	
	Total Crashes	Fatal Crashes	Total Crashes	Fatal Crashes	Total Crashes	Fatal Crashes	Total Crashes	Fatal Crashes	Total Crashes	Fatal Crashes
Single motor vehicle	4,860	19	4,652	30	4,826	28	4,955	14	5,190	17
Head-on	194	6	180	3	140	6	159	8	164	8
Head-on / left turn	282	0	313	1	274	0	309	2	265	1
Angle	2,357	6	2,541	5	2,313	8	2,187	4	2,277	2
Rear-end	4,919	5	5,464	2	4,995	6	4,950	3	4,963	4
Rear-end left turn	137	0	164	0	129	0	110	0	99	0
Rear-end right turn	186	0	175	0	167	0	179	0	151	0
Sideswipe same direction	1,954	1	2,093	0	2,016	5	2,030	1	2,146	2
Sideswipe opposite direction	304	0	326	0	273	0	283	1	279	0
Backing	0	0	71	0	237	0	280	0	320	0
Other / Unknown	623	1	652	2	571	0	559	4	518	4
Uncoded and Errors	0	0	0	0	0	0	0	0	0	0
<b>Total</b>	<b>15,816</b>	<b>38</b>	<b>16,631</b>	<b>43</b>	<b>15,941</b>	<b>53</b>	<b>16,001</b>	<b>37</b>	<b>16,372</b>	<b>38</b>

## 5-Year Trend Crashes by Crash Type



**2019 - Bodily Alcohol Concentration (BAC) Results Among All Vehicle Drivers in Alcohol-Involved Crashes by Age**

Age Group	Drivers				BAC Result Range for Drivers Coded Drinking				
	Total Drivers in Alcohol-Involved Crashes	Total Drivers Tested in all Crashes	Total Drivers Coded Drinking, Tested	Total Drivers Coded Drinking	BAC = 0.00	BAC 0.01 g/dL to 0.07 g/dL	BAC 0.08 g/dL to 0.16 g/dL	BAC 0.17 g/dL and Above	BAC Not Reported
0 - 15	0	0	0	0	0	0	0	0	0
16 - 20	39	32	22	25	0	3	6	0	16
21 - 24	99	80	65	75	0	12	20	18	25
25 - 64	507	365	304	361	0	18	81	85	177
65 +	38	25	16	18	0	0	4	2	12
Unknown	50	0	0	0	0	0	0	0	0
<b>Total</b>	<b>733</b>	<b>502</b>	<b>407</b>	<b>479</b>	<b>0</b>	<b>33</b>	<b>111</b>	<b>105</b>	<b>230</b>

Notes: BAC measured in grams (g) per deciliter (dL).

BAC may not be reported if drivers are not tested or if the results are not available immediately (as in the case of a blood test).

A driver may be coded by the officer as drinking even though no test is administered.

**Alcohol-Involved Crashes**

In 2019, there were 733 drivers in alcohol-involved crashes; 479 (65.3%) of those drivers were coded as had-been-drinking by the officer on the crash form.

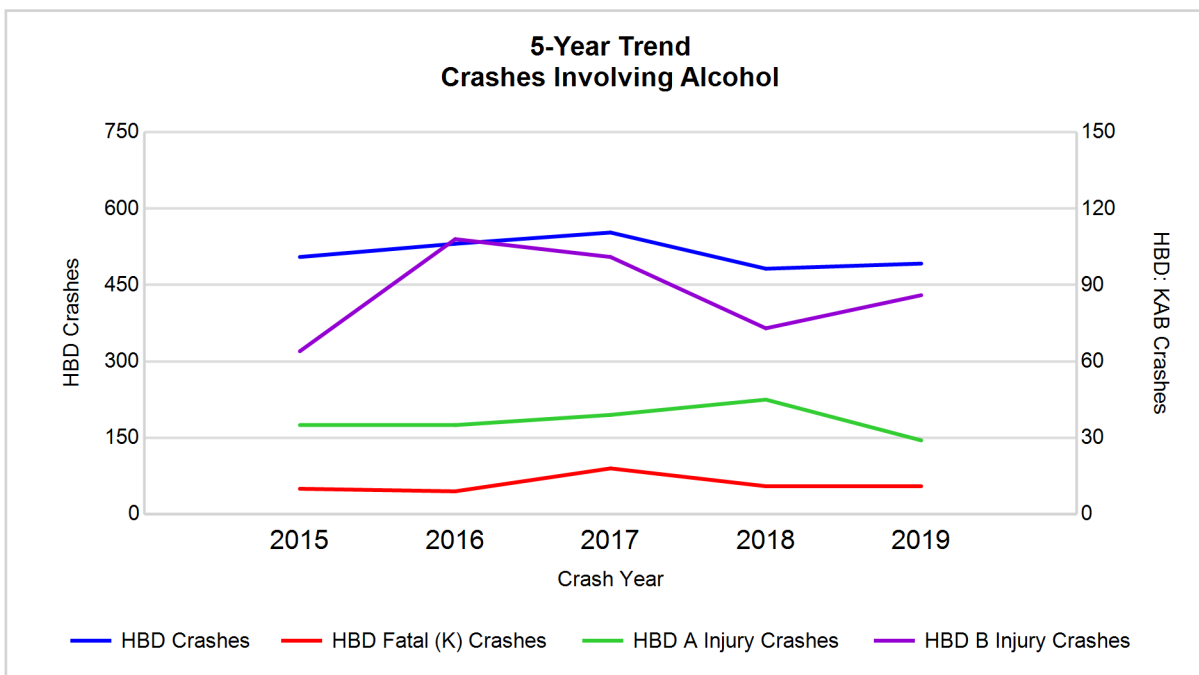
- 216 (45.1%) of the 479 drivers had a blood alcohol concentration (BAC) of 0.08 g/dL (grams per deciliter) or greater, and 105 (48.6%) of the 216 drivers had a BAC at or above 0.17 g/dL.
- 407 (85.0%) of the 479 drivers were coded as had-been-drinking and were tested for alcohol consumption.

**5-Year Trend - Crashes Involving Alcohol**

Year	All Crashes	HBD Crashes	% HBD	Fatal Crashes	HBD Fatal Crashes	% HBD	A Injury Crashes	HBD A Injury Crashes	% HBD	B Injury Crashes	HBD B Injury Crashes	% HBD
2015	15,816	505	3.2	38	10	26.3	163	35	21.5	776	64	8.2
2016	16,631	531	3.2	43	9	20.9	193	35	18.1	965	108	11.2
2017	15,941	553	3.5	53	18	34.0	213	39	18.3	953	101	10.6
2018	16,001	482	3.0	37	11	29.7	219	45	20.5	885	73	8.2
2019	16,372	492	3.0	38	11	28.9	182	29*	15.9*	919	86	9.4

Note: \* Indicates that the most recent year is the lowest number or percentage reported in the 5-year period in that column

\*\* Indicates that the most recent year is the highest number or percentage reported in the 5-year period in that column



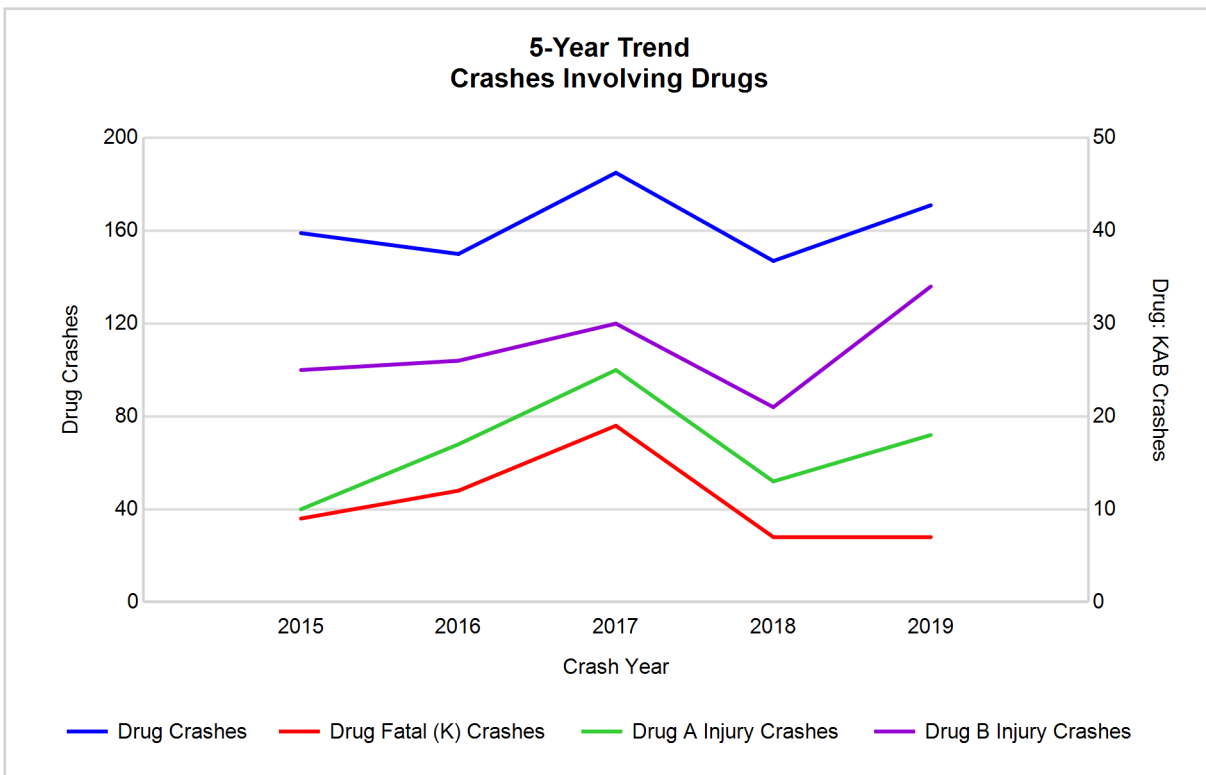
Note: Had-Been-Drinking (HBD)

## 5-Year Trend - Crashes Involving Drugs

Year	All Crashes	Drug Crashes	% Drug	Fatal Crashes	Drug Fatal Crashes	% Drug	A Injury Crashes	Drug A Injury Crashes	% Drug	B Injury Crashes	Drug B Injury Crashes	% Drug
2015	15,816	159	1.0	38	9	23.7	163	10	6.1	776	25	3.2
2016	16,631	150	0.9	43	12	27.9	193	17	8.8	965	26	2.7
2017	15,941	185	1.2	53	19	35.8	213	25	11.7	953	30	3.1
2018	16,001	147	0.9	37	7	18.9	219	13	5.9	885	21	2.4
2019	16,372	171	1.0	38	7	18.4*	182	18	9.9	919	34**	3.7**

Note: \* Indicates that the most recent year is the lowest number or percentage reported in the 5-year period in that column

\*\* Indicates that the most recent year is the highest number or percentage reported in the 5-year period in that column

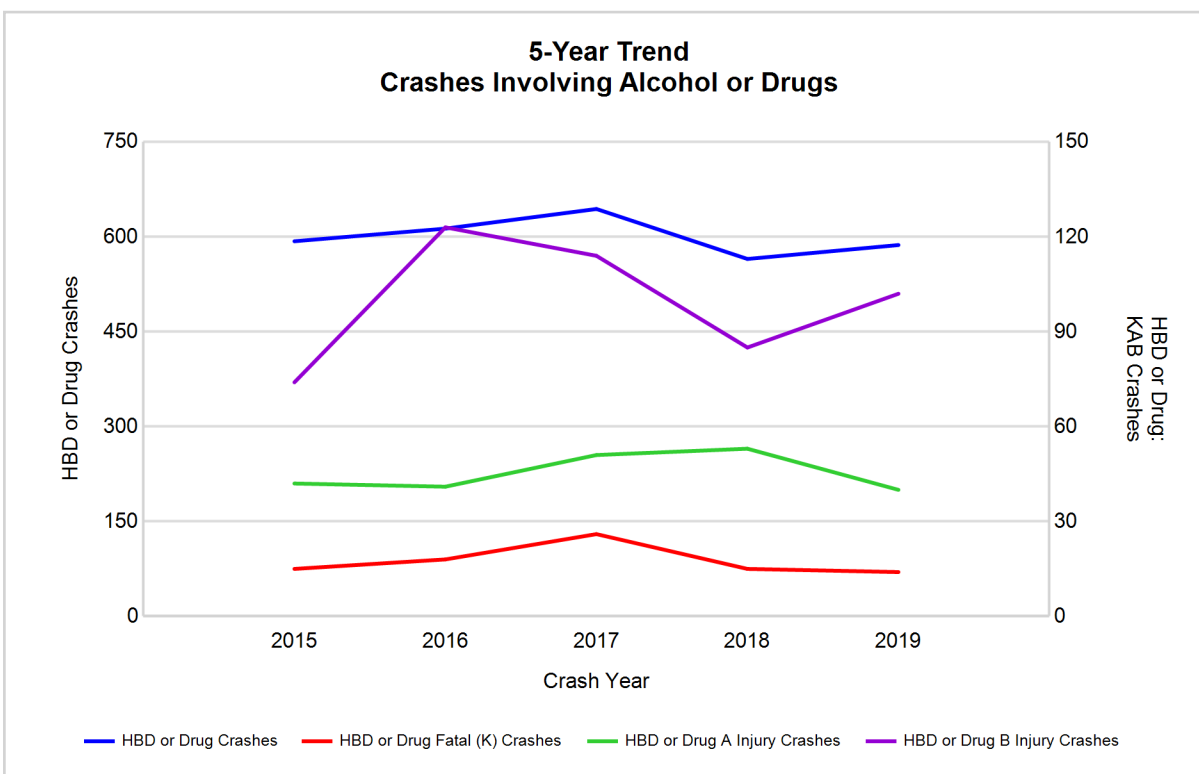


## 5-Year Trend - Crashes Involving Alcohol or Drugs

Year	All Crashes	HBD or Drug Crashes	% HBD or Drug	Fatal Crashes	HBD or Drug Fatal Crashes	% HBD or Drug	A Injury Crashes	HBD or Drug A Injury Crashes	% HBD or Drug	B Injury Crashes	HBD or Drug B Injury Crashes	% HBD or Drug
2015	15,816	593	3.7	38	15	39.5	163	42	25.8	776	74	9.5
2016	16,631	613	3.7	43	18	41.9	193	41	21.2	965	123	12.7
2017	15,941	644	4.0	53	26	49.1	213	51	23.9	953	114	12.0
2018	16,001	565	3.5	37	15	40.5	219	53	24.2	885	85	9.6
2019	16,372	587	3.6	38	14*	36.8*	182	40*	22.0	919	102	11.1

Note: \* Indicates that the most recent year is the lowest number or percentage reported in the 5-year period in that column

\*\* Indicates that the most recent year is the highest number or percentage reported in the 5-year period in that column



Note: Had-Been-Drinking (HBD)



# MSP Post 12 - Brighton (continued)

14

## 2019 - Restraints Worn Among Vehicle Drivers and Injured Passengers by Vehicle Type

Vehicle Type	Total Occupants			Fatalities			A - Suspected Serious			B - Suspected Minor			C - Possible Injury			No Injury		
	Total	Used Restraint	%	Total	Used Restraint	%	Total	Used Restraint	%	Total	Used Restraint	%	Total	Used Restraint	%	Total	Used Restraint	%
Passenger car, SUV, van	24,897	23,006	92.4	24	17	70.8	127	103	81.1	816	748	91.7	1,796	1,707	95.0	20,870	20,431	97.9
Motor home	122	117	95.9	0	0	0.0	0	0	0.0	5	4	80.0	14	14	100.0	103	99	96.1
Pickup truck	2,581	2,367	91.7	6	3	50.0	18	14	77.8	83	76	91.6	108	99	91.7	2,241	2,175	97.1
Small truck under 10,000 lbs. GVWR	116	101	87.1	0	0	0.0	0	0	0.0	3	3	100.0	6	6	100.0	95	92	96.8
Motorcycle	144	97	67.4	7	4	57.1	26	16	61.5	52	36	69.2	26	20	76.9	31	21	67.7
Moped / goped	20	5	25.0	0	0	0.0	4	0	0.0	6	3	50.0	5	1	20.0	4	1	25.0
Go-cart / golf cart	1	0	0.0	0	0	0.0	0	0	0.0	0	0	0.0	0	0	0.0	1	0	0.0
Snowmobile	1	1	100.0	0	0	0.0	0	0	0.0	1	1	100.0	0	0	0.0	0	0	0.0
Off-Road Vehicle - ORV / All-Terrain Vehicle - ATV	6	2	33.3	0	0	0.0	1	0	0.0	3	2	66.7	0	0	0.0	2	0	0.0
Other	78	45	57.7	0	0	0.0	0	0	0.0	4	2	50.0	1	0	0.0	59	43	72.9
Truck/bus over 10,000 lbs.	1,027	900	87.6	2	0	0.0	7	4	57.1	19	11	57.9	51	22	43.1	892	863	96.7
Unknown	348	0	0.0	0	0	0.0	0	0	0.0	0	0	0.0	0	0	0.0	9	0	0.0
<b>Total</b>	<b>29,341</b>	<b>26,641</b>	<b>90.8</b>	<b>39</b>	<b>24</b>	<b>61.5</b>	<b>183</b>	<b>137</b>	<b>74.9</b>	<b>992</b>	<b>886</b>	<b>89.3</b>	<b>2,007</b>	<b>1,869</b>	<b>93.1</b>	<b>24,307</b>	<b>23,725</b>	<b>97.6</b>

Note: Restraint Use includes shoulder belt only used, lap belt only used, both lap and shoulder belts used, child restraint used, restraint failure, and helmet worn.

## 2019 - Restraints Worn Among Vehicle Drivers and Injured Passengers by Age

Age Group	Total Occupants			Fatalities			A - Suspected Serious			B - Suspected Minor			C - Possible Injury			No Injury		
	Total	Used Restraint	%	Total	Used Restraint	%	Total	Used Restraint	%	Total	Used Restraint	%	Total	Used Restraint	%	Total	Used Restraint	%
0 - 15	255	208	81.6	3	1	33.3	4	1	25.0	31	23	74.2	173	142	82.1	44	41	93.2
16 - 20	3,256	3,173	97.5	1	0	0.0	14	11	78.6	129	111	86.0	202	189	93.6	2,907	2,862	98.5
21 - 24	3,056	2,943	96.3	4	3	75.0	17	14	82.4	128	114	89.1	199	173	86.9	2,699	2,639	97.8
25 - 64	17,942	17,396	97.0	19	10	52.6	123	88	71.5	560	502	89.6	1,188	1,124	94.6	15,997	15,672	98.0
65 +	2,989	2,921	97.7	12	10	83.3	25	23	92.0	144	136	94.4	245	241	98.4	2,560	2,511	98.1
Unknown	1,843	0	0.0	0	0	0.0	0	0	0.0	0	0	0.0	0	0	0.0	100	0	0.0
<b>Total</b>	<b>29,341</b>	<b>26,641</b>	<b>90.8</b>	<b>39</b>	<b>24</b>	<b>61.5</b>	<b>183</b>	<b>137</b>	<b>74.9</b>	<b>992</b>	<b>886</b>	<b>89.3</b>	<b>2,007</b>	<b>1,869</b>	<b>93.1</b>	<b>24,307</b>	<b>23,725</b>	<b>97.6</b>

Note: Restraint Use includes shoulder belt only used, lap belt only used, both lap and shoulder belts used, child restraint used, restraint failure, and helmet worn.

## 5-Year Trend - Restraint Use Among Drivers

Restraint Use	2015			2016			2017			2018			2019		
	Drivers	Fatal Drivers	Injured Drivers	Drivers	Fatal Drivers	Injured Drivers	Drivers	Fatal Drivers	Injured Drivers	Drivers	Fatal Drivers	Injured Drivers	Drivers	Fatal Drivers	Injured Drivers
No belts available	33	0	6	38	0	7	21	0	1	29	0	5	21	0	4
Shoulder belt only used	9	0	2	23	0	4	27	0	3	26	0	5	29	0	4
Lap belt only used	29	0	2	24	0	3	15	0	3	19	0	4	18	0	1
Both lap & shoulder belts used	25,339	10	2,405	26,906	14	2,570	25,516	24	2,401	25,496	13	2,415	25,922	14	2,248
No belts used	135	5	63	140	3	61	116	7	55	107	7	48	134	6	61
Child restraint used	1	0	0	1	0	0	6	0	0	0	0	0	0	0	0
Child restraint not used, unavailable or improper use	0	0	0	1	0	0	0	0	0	0	0	0	0	0	0
Restraint failure	1	0	0	0	0	0	1	0	1	1	0	0	2	0	1
Restraint use unknown	1,677	2	52	1,994	5	81	1,740	2	78	1,721	2	74	1,762	2	58
Helmet worn	131	5	90	116	1	88	115	2	92	101	5	77	102	4	76
Helmet not worn	65	3	38	54	5	35	41	3	28	39	2	30	57	3	41
Helmet use unknown	13	2	6	8	0	5	5	0	3	5	0	4	4	0	3
Uncoded & errors	390	0	0	412	0	0	519	0	0	566	0	0	595	0	0
<b>Total</b>	<b>27,823</b>	<b>27</b>	<b>2,664</b>	<b>29,717</b>	<b>28</b>	<b>2,854</b>	<b>28,122</b>	<b>38</b>	<b>2,665</b>	<b>28,110</b>	<b>29</b>	<b>2,662</b>	<b>28,646</b>	<b>29</b>	<b>2,497</b>

## 5-Year Trend - Restraint Use Among Drivers Coded Drinking

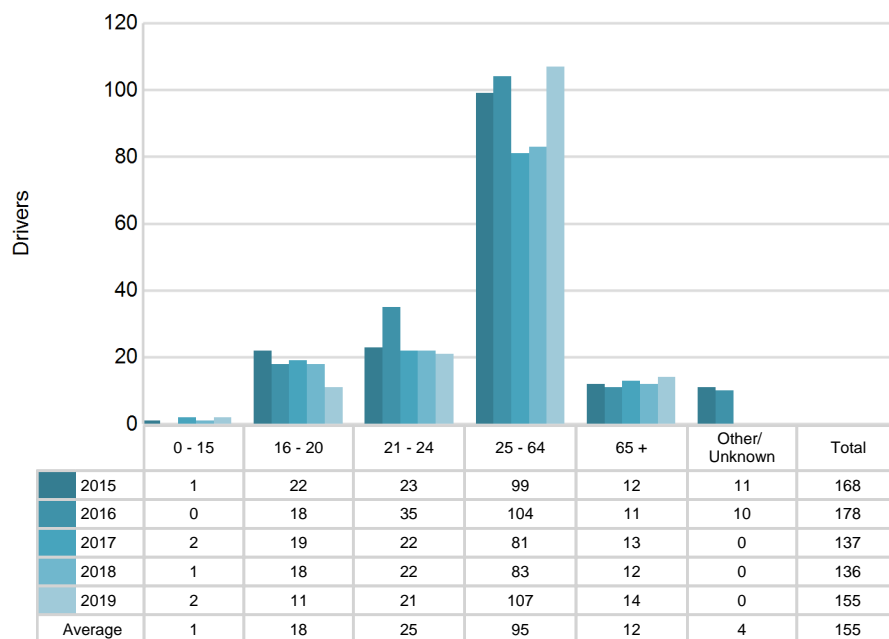
Restraint Use	2015			2016			2017			2018			2019		
	Drivers	Fatal Drivers	Injured Drivers	Drivers	Fatal Drivers	Injured Drivers	Drivers	Fatal Drivers	Injured Drivers	Drivers	Fatal Drivers	Injured Drivers	Drivers	Fatal Drivers	Injured Drivers
No belts available	1	0	1	1	0	0	0	0	0	2	0	0	1	0	1
Shoulder belt only used	0	0	0	0	0	0	1	0	0	2	0	1	0	0	0
Lap belt only used	1	0	0	1	0	0	0	0	0	0	0	0	0	0	0
Both lap & shoulder belts used	383	1	91	394	1	132	416	3	138	367	4	118	386	2	100
No belts used	29	3	17	30	2	17	30	3	18	28	2	14	33	2	20
Child restraint used	0	0	0	0	0	0	1	0	0	0	0	0	0	0	0
Child restraint not used, unavailable or improper use	0	0	0	0	0	0	0	0	0	0	0	0	0	0	0
Restraint failure	0	0	0	0	0	0	0	0	0	0	0	0	0	0	0
Restraint use unknown	73	1	19	76	1	34	83	1	28	63	0	22	48	0	24
Helmet worn	3	0	3	6	0	5	3	0	3	6	0	6	3	1	2
Helmet not worn	7	2	4	15	1	13	4	0	4	5	2	3	8	2	6
Helmet use unknown	1	0	0	1	0	1	0	0	0	1	0	0	0	0	0
Uncoded & errors	0	0	0	0	0	0	0	0	0	0	0	0	0	0	0
<b>Total</b>	<b>498</b>	<b>7</b>	<b>135</b>	<b>524</b>	<b>5</b>	<b>202</b>	<b>538</b>	<b>7</b>	<b>191</b>	<b>474</b>	<b>8</b>	<b>164</b>	<b>479</b>	<b>7</b>	<b>153</b>

## 5-Year Trend - Seatbelt Not Used Among Drivers by Age

Age Group	2015			2016			2017			2018			2019		
	Drivers	Fatal Drivers	Injured Drivers	Drivers	Fatal Drivers	Injured Drivers	Drivers	Fatal Drivers	Injured Drivers	Drivers	Fatal Drivers	Injured Drivers	Drivers	Fatal Drivers	Injured Drivers
0 - 15	1	0	1	0	0	0	2	0	0	1	0	0	2	0	0
16 - 20	22	0	7	18	0	8	19	0	12	18	0	8	11	0	8
21 - 24	23	2	13	35	0	16	22	2	13	22	3	6	21	0	12
25 - 64	99	3	43	104	3	35	81	3	28	83	3	36	107	5	43
65 +	12	0	5	11	0	9	13	2	3	12	1	3	14	1	2
Unknown	11	0	0	10	0	0	0	0	0	0	0	0	0	0	0
<b>Total</b>	<b>168</b>	<b>5</b>	<b>69</b>	<b>178</b>	<b>3</b>	<b>68</b>	<b>137</b>	<b>7</b>	<b>56</b>	<b>136</b>	<b>7</b>	<b>53</b>	<b>155</b>	<b>6</b>	<b>65</b>

Note: Seatbelt Not Used includes no belts available or no belts used.

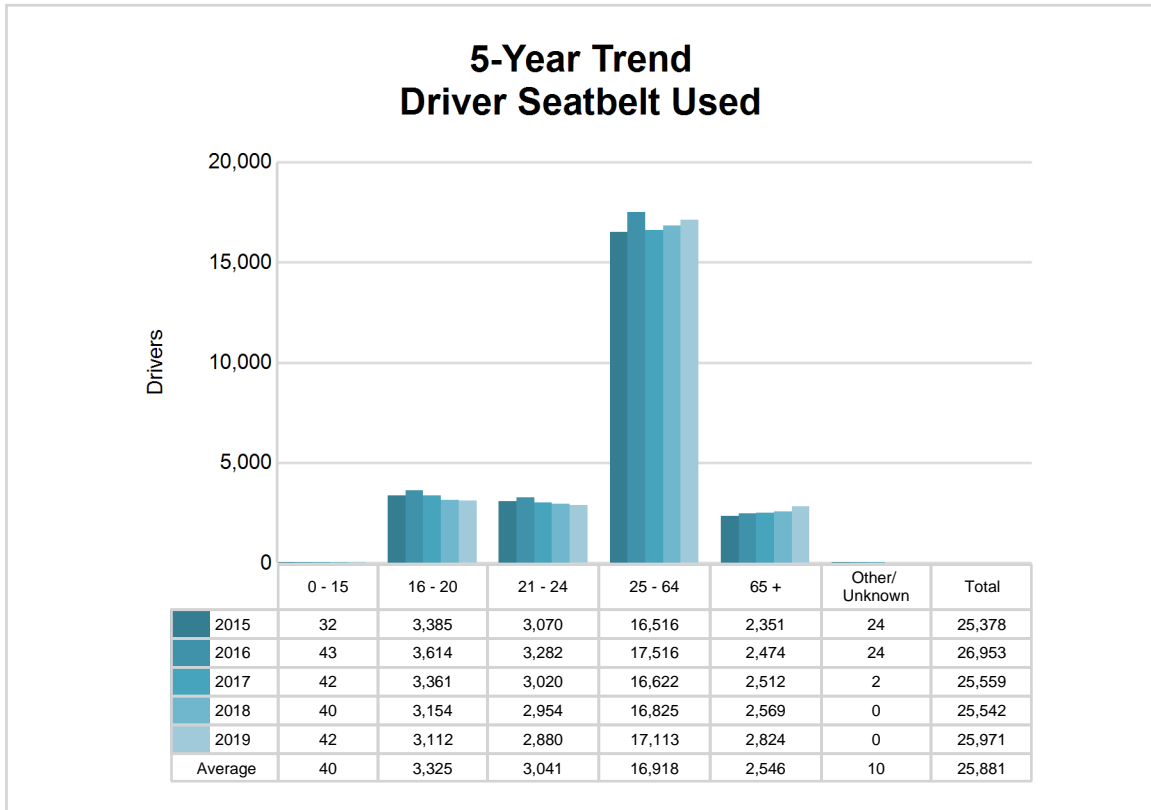
## 5-Year Trend Driver Seatbelt Not Used



## 5-Year Trend - Seatbelt Used Among Drivers by Age

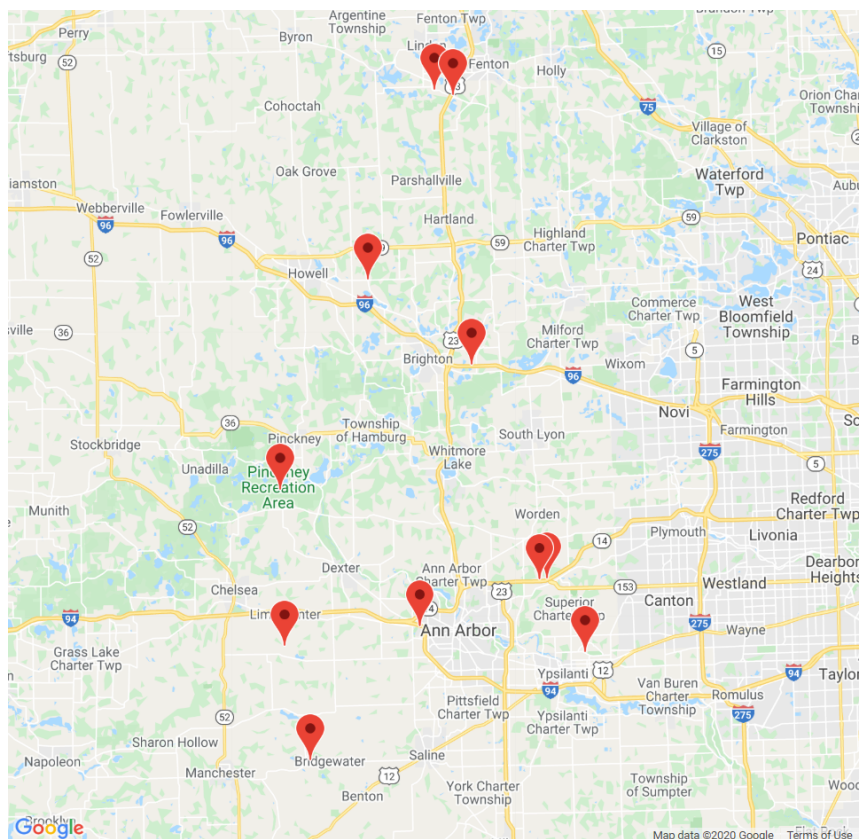
Age Group	2015			2016			2017			2018			2019		
	Drivers	Fatal Drivers	Injured Drivers	Drivers	Fatal Drivers	Injured Drivers	Drivers	Fatal Drivers	Injured Drivers	Drivers	Fatal Drivers	Injured Drivers	Drivers	Fatal Drivers	Injured Drivers
0 - 15	32	0	4	43	0	6	42	0	3	40	0	2	42	0	1
16 - 20	3,385	2	298	3,614	1	313	3,361	2	304	3,154	1	302	3,112	0	253
21 - 24	3,070	1	271	3,282	1	319	3,020	1	296	2,954	1	270	2,880	1	242
25 - 64	16,516	4	1,581	17,516	6	1,660	16,622	15	1,538	16,825	9	1,552	17,113	7	1,448
65 +	2,351	3	255	2,474	6	279	2,512	6	267	2,569	2	298	2,824	6	310
Unknown	24	0	0	24	0	0	2	0	0	0	0	0	0	0	0
<b>Total</b>	<b>25,378</b>	<b>10</b>	<b>2,409</b>	<b>26,953</b>	<b>14</b>	<b>2,577</b>	<b>25,559</b>	<b>24</b>	<b>2,408</b>	<b>25,542</b>	<b>13</b>	<b>2,424</b>	<b>25,971</b>	<b>14</b>	<b>2,254</b>

Note: Seatbelt Used includes shoulder belt only used, lap belt only used, both lap and shoulder belts used, and restraint failure.



## 5-Year Trend - Drivers in Crashes by Hazardous Action

Hazardous Action	2015		2016		2017		2018		2019	
	Total Drivers in Crashes	Drivers in Fatal Crashes	Total Drivers in Crashes	Drivers in Fatal Crashes	Total Drivers in Crashes	Drivers in Fatal Crashes	Total Drivers in Crashes	Drivers in Fatal Crashes	Total Drivers in Crashes	Drivers in Fatal Crashes
None	13,644	29	14,345	23	13,672	43	13,761	32	13,972	21
Speed too fast	1,907	11	1,792	8	1,852	5	2,092	8	2,121	8
Speed too slow	7	0	13	0	9	0	10	0	16	0
Failed to yield	2,463	2	2,853	4	2,686	6	2,687	3	2,677	3
Disregard traffic control	339	3	351	1	336	1	313	1	317	0
Drove wrong way	5	0	10	0	10	0	14	2	13	0
Drove left of center	144	4	127	1	125	4	132	7	123	2
Improper passing	146	0	136	0	142	2	134	0	154	1
Improper lane use	584	0	661	1	660	2	684	0	798	1
Improper turn	243	0	294	0	226	1	244	0	301	0
Improper/no signal	61	0	44	0	58	0	60	0	33	0
Improper backing	364	0	298	0	291	0	282	0	297	0
Unable to stop in assured clear distance	4,636	2	5,212	1	4,714	4	4,616	1	4,648	1
Other	709	5	723	2	699	5	679	7	703	9
Unknown	965	2	1,213	6	1,173	3	1,098	5	1,159	7
Reckless driving	125	2	150	3	133	7	101	4	134	2
Careless/negligent driving	962	4	959	9	828	5	673	4	618	7
Uncoded & errors	519	0	536	0	508	0	530	3	562	8
<b>Total</b>	<b>27,823</b>	<b>64</b>	<b>29,717</b>	<b>59</b>	<b>28,122</b>	<b>88</b>	<b>28,110</b>	<b>77</b>	<b>28,646</b>	<b>70</b>



The picture above represents all 2019 alcohol-involved fatal crashes in Post 12.

In 2019, there were 492 alcohol-involved crashes in Post 12:

- 11 K - Fatal Crashes
- 29 A - Suspected Serious Injury Crashes
- 86 B - Suspected Minor Injury Crashes
- 82 C - Possible Injury Crashes
- 284 O - Property Damage Only/No Injury Crashes

### Office of Highway Safety Planning

---

Physical Address:  
7150 Harris Drive  
Dimondale, Michigan 48821

Mailing Address:  
P.O. Box 30634  
Lansing, Michigan 48909

Phone: (517) 284-3112  
Fax: (517) 284-3151

Find us on the web:  
[MichiganTrafficCrashFacts.org](http://MichiganTrafficCrashFacts.org)

