



2019

MTCF
Michigan Traffic
Crash Facts

Michigan Traffic Crash Facts

Reporting Criteria

Please pay particular attention to the wording when interpreting the three levels of data gathered for this report.

Crash

The Crash Level analyzes data related to crash events and returns one result per crash.

Examples: Time, weather, and location.

Units

The Units Level analyzes the experience of the units in the crash and returns one result per vehicle, driver, pedestrian, bicyclist, or train.

Examples: Vehicle type, driver condition, and unit events.

People

The People Level analyzes the experience of the people involved in the crash and returns one result per occupant/person/party.

Examples: Age, injury severity, and seat belt or helmet use.

KABCO Injury Indicator:

K = Killed

A = Suspected Serious Injury

B = Suspected Minor Injury

C = Possible Injury

O = No Injury

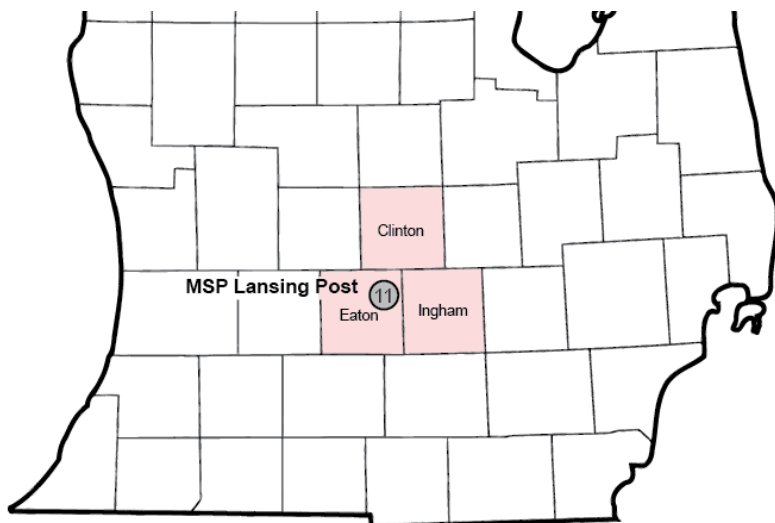
Property Damage Only (PDO)



Michigan State Police (MSP) Post 11 - Lansing

2019 Traffic Crash Data & 2015-2019 5-Year Trends

Post 11 is comprised of Clinton, Eaton, and Ingham counties. Trend tables for this report are based on those counties.



Sources:

The crashes in this report occurred on public roadways in Michigan and resulted in injuries, fatalities, or property damage (with \$1,000 as a reporting threshold). The information was gathered from Michigan Traffic Crash Report Forms (UD-10) submitted by local police departments, sheriff's offices, and the Michigan State Police. Other related information was obtained from the departments of Transportation, State, and Community Health.

This page left intentionally blank

MSP Post 11 - Lansing

- There were 15,345 crashes in Post 11 during 2019. [Page 1]
- A total of 42 fatalities resulted from 35 fatal crashes in 2019 in Post 11. [Page 1]
- There were 3,610 injuries and 2,639 injury crashes. [Page 1]
- There were 12,671 property damage only crashes (no fatalities or injuries). [Page 1]
- November had the highest number of crashes (1,864). [Pages 1-2]
- October had the highest number of fatal crashes (6) while October and November had the highest number of fatalities (6). [Pages 1-2]
- October had the highest number of injury crashes (287) and injuries (387). [Page 1]
- November had the highest number of property damage only crashes (1,628). [Page 1]
- Of all vehicles involved in fatal crashes, 7 (12.1%) were motorcycles. [Page 1]
- Tuesday was the day of the week with the highest number of crashes (2,461) and Friday had the highest number of fatal crashes (9). [Pages 2-3]
- The 3:00 PM - 5:59 PM time period had the highest number of crashes (3,441). This holds true for every year between 2015 and 2019. The Noon - 2:59 PM time period had the highest number of fatal crashes (8). [Pages 5-6]
- During the period from 2015 to 2019, the highest number of deer crashes occurred in 2019 (3,318). The 6:00 PM - 8:59 PM time period had the highest number of deer-involved crashes. There were 0 fatal crashes involving deer in 2019. [Pages 7-8]
- Ingham County (62.2%) had the highest number of crashes in Post 11 in 2019, followed by Eaton County (21.8%), and Clinton County (16.0%). [Page 8]
- Ingham County (40.5%) had the highest number of fatalities in Post 11 in 2019, followed by Eaton County (31.0%), and Clinton County (28.6%). [Page 8]
- The highest number of drivers in crashes (25,981) occurred during 2016 and the highest number of drivers coded drinking in crashes (452) occurred during 2019 within the five year period between 2015 and 2019. [Page 9]
- A total of 460 crashes involved alcohol in 2019. [Page 11]
- Alcohol-involved fatal crashes were the highest in 2017 during the five-year period from 2015 to 2019 at 14. [Page 11]
- A total of 127 crashes, 10 fatal crashes, and 19 suspected serious injury crashes involved drugs in 2019. [Page 12]
- There were 22,673 drivers wearing seatbelts and 163 drivers not wearing seatbelts in crashes in 2019. Of the 163 drivers not wearing seat belts, 6 (3.7%) were killed and 65 (39.9%) were injured. [Pages 15-17]
- The most common hazardous action coded for drivers in 2019 in all crashes was unable to stop in assured clear distance (3,211), while the most common hazardous actions coded for drivers in fatal crashes were unknown and speed too fast (8). [Page 18]

MSP Post 11 - Lansing (continued)

Post 11 Experience

In 2019:

There were 25,430 drivers involved in 15,345 motor vehicle crashes in MSP Post 11. Of those crashes, 35 were classified as fatal, resulting in 42 fatalities. An additional 3,610 persons were injured.

Post 11 experienced the highest number of motor vehicle crashes (1,864) in November, the highest number of fatal crashes (6) in October and the highest number of persons killed (6) in October and November.

Michigan driver statistics indicate 6.8 percent of licensed drivers in Post 11 were age 16-20, and 11.4 percent of drivers in crashes were also in that age group.

2019 - Crashes and Injuries by Month

Month	Crashes				Persons	
	Total	Fatal	Injury	Property Damage Only (PDO)	Fatalities	Injuries
January	1,540	2	237	1,301	2	328
February	1,276	2	176	1,098	2	236
March	1,105	2	176	927	4	262
April	961	2	189	770	2	256
May	1,081	4	212	865	4	287
June	1,196	2	244	950	2	332
July	996	3	223	770	3	310
August	1,106	4	245	857	4	350
September	1,185	2	229	954	4	310
October	1,724	6	287	1,431	6	387
November	1,864	4	232	1,628	6	297
December	1,311	2	189	1,120	3	255
Total	15,345	35	2,639	12,671	42	3,610

2019 - Driver Statistics

Age Group	Post 11			Driver Rates	
	2019 Population	Licensed Drivers	Drivers in Crashes	Per 10k Population	Per 10k Licensed
0 - 15	86,384	2,320	36	4.2	155.2
16 - 20	42,982	22,841	2,905	675.9	1,271.8
21 - 24	39,656	24,533	2,755	694.7	1,123.0
25 - 64	237,672	215,638	15,206	639.8	705.2
65 +	75,575	68,347	2,659	351.8	389.0
Unknown	0	0	1,869	--	--
Total	482,269	333,679	25,430	527.3	762.1

2019 - Vehicles in Crashes

Vehicle Type	Motor Vehicles		Fatal Crashes		Injury Crashes	PDO Crashes
	Number of Vehicles	% of Total	Number	% of Total	Number	Number
Passenger car, SUV, van	20,905	82.2	39	67.2	3,970	16,896
Motor home	71	0.3	0	0.0	7	64
Pickup truck	2,645	10.4	8	13.8	467	2,170
Small truck under 10,000 lbs. GVWR	108	0.4	0	0.0	17	91
Motorcycle	132	0.5	7	12.1	95	30
Moped / goped	37	0.1	2	3.4	27	8
Go-cart / golf cart	1	0.0	0	0.0	1	0
Snowmobile	0	0.0	0	0.0	0	0
Off-Road Vehicle - ORV / All-Terrain Vehicle - ATV	5	0.0	0	0.0	5	0
Other	167	0.7	0	0.0	20	147
Truck/bus over 10,000 lbs.	750	2.9	2	3.4	122	626
Unknown	609	2.4	0	0.0	62	547
Total	25,430	100.0	58	100.0	4,793	20,579

5-Year Trend - Crashes by Month

Month	2015		2016		2017		2018		2019	
	Total Crashes	Fatal Crashes	Total Crashes	Fatal Crashes	Total Crashes	Fatal Crashes	Total Crashes	Fatal Crashes	Total Crashes	Fatal Crashes
January	1,503	1	1,525	0	1,402	4	1,643	5	1,540	2
February	1,326	2	1,379	3	960	2	1,394	2	1,276	2
March	1,008	4	1,169	2	1,279	2	1,092	3	1,105	2
April	881	1	1,001	4	1,031	3	1,093	2	961	2
May	1,063	2	1,187	3	1,193	3	1,097	3	1,081	4
June	1,054	5	1,172	7	1,125	4	1,133	2	1,196	2
July	1,055	5	932	5	965	4	955	3	996	3
August	980	4	1,055	4	1,020	4	1,029	8	1,106	4
September	1,170	1	1,247	9	1,123	4	1,189	7	1,185	2
October	1,606	4	1,543	4	1,672	4	1,694	5	1,724	6
November	1,740	0	1,638	3	1,586	2	1,776	1	1,864	4
December	1,349	2	1,625	3	1,694	1	1,196	2	1,311	2
Total	14,735	31	15,473	47	15,050	37	15,291	43	15,345	35

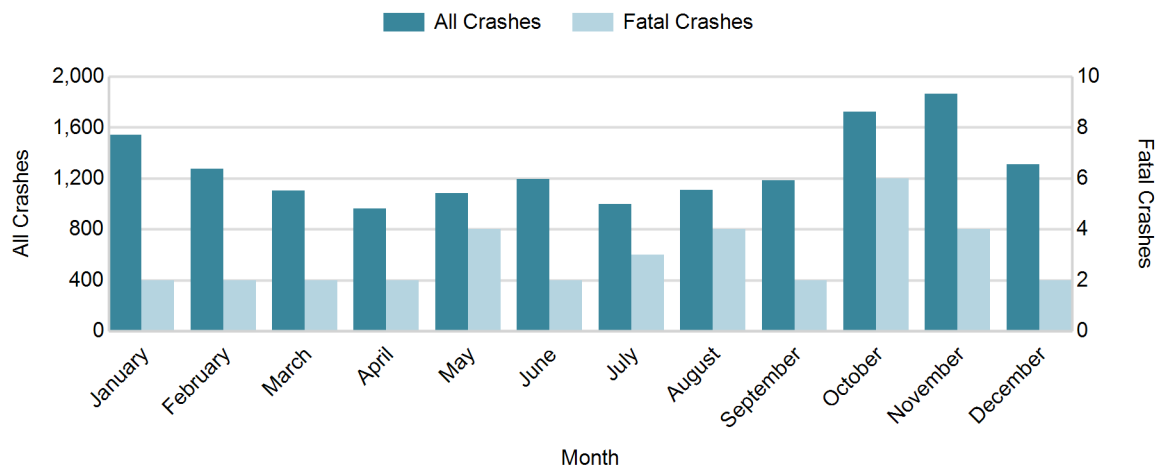
Note: † Indicates that the highest number of total crashes reported in the 5-year period occurred in the same month

5-Year Trend - Crashes by Day of Week

Day	2015		2016		2017		2018		2019	
	Total Crashes	Fatal Crashes	Total Crashes	Fatal Crashes	Total Crashes	Fatal Crashes	Total Crashes	Fatal Crashes	Total Crashes	Fatal Crashes
Monday	2,148	5	2,141	6	2,209	6	2,318	5	2,393	3
Tuesday	2,267	4	2,364	5	2,372	2	2,348	6	2,461	3
Wednesday	2,232	2	2,473	6	2,307	5	2,293	9	2,433	4
Thursday	2,115	5	2,568	8	2,392	3	2,271	3	2,329	2
Friday	2,460	3	2,585	6	2,515	7	2,697	5	2,429	9
Saturday	1,947	6	1,830	10	1,813	10	1,843	8	1,737	7
Sunday	1,566	6	1,512	6	1,442	4	1,521	7	1,563	7
Total	14,735	31	15,473	47	15,050	37	15,291	43	15,345	35

Note: † Indicates that the highest number of total crashes reported in the 5-year period occurred on the same day of the week

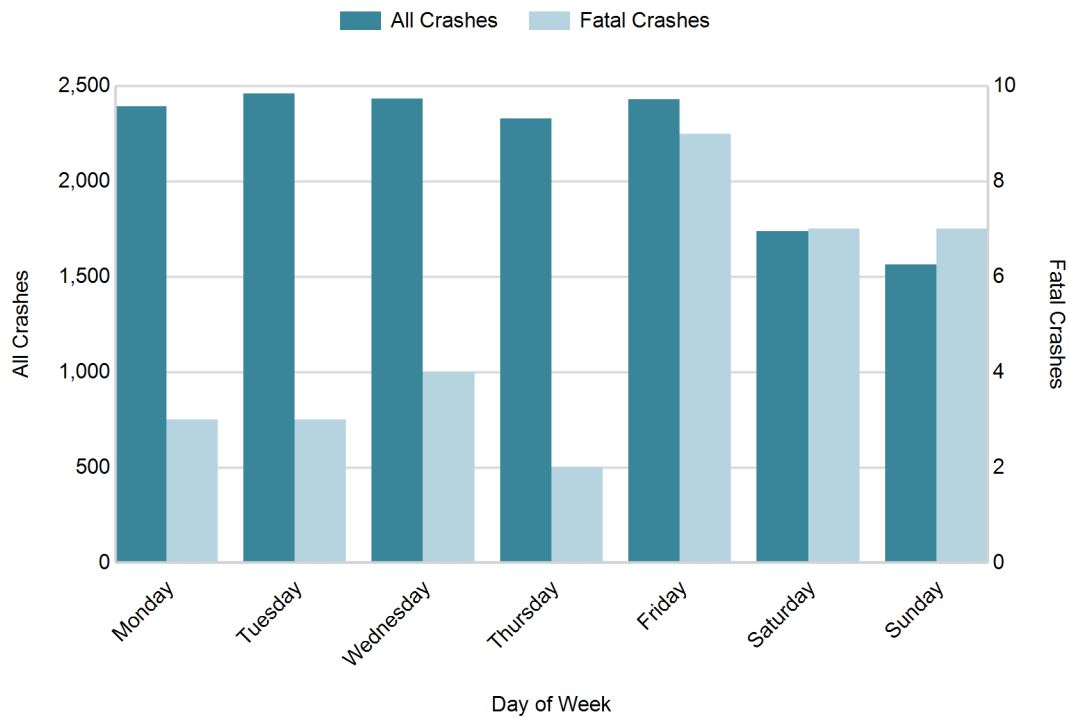
2019 Crashes by Month



2019 - Crashes by Day of Week

Day	All Crashes		Fatal Crashes		Injury Crashes			PDO Crashes
	Number	% of Total	Number	% of Fatal	A	B	C	Number
Monday	2,393	15.6	3	8.6	40	89	263	1,998
Tuesday	2,461	16.0	3	8.6	41	118	282	2,017
Wednesday	2,433	15.9	4	11.4	30	101	286	2,012
Thursday	2,329	15.2	2	5.7	34	109	270	1,914
Friday	2,429	15.8	9	25.7	43	106	256	2,015
Saturday	1,737	11.3	7	20.0	34	86	173	1,437
Sunday	1,563	10.2	7	20.0	25	92	161	1,278
Total	15,345	100.0	35	100.0	247	701	1,691	12,671

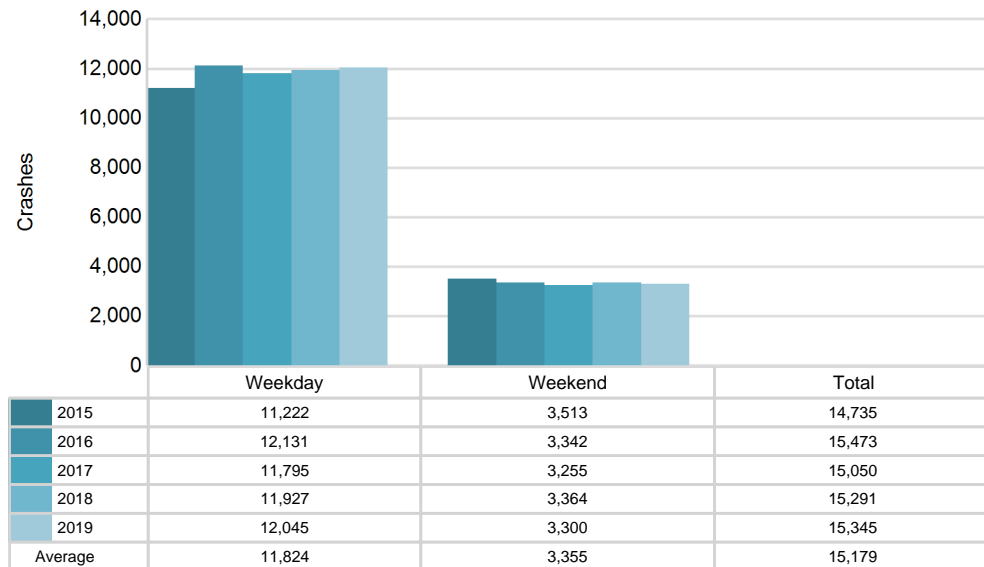
2019 Day of Week and Severity



5-Year Trend - Crashes by Weekday and Weekend

Portion of Week	2015		2016		2017		2018		2019	
	Total Crashes	Fatal Crashes	Total Crashes	Fatal Crashes	Total Crashes	Fatal Crashes	Total Crashes	Fatal Crashes	Total Crashes	Fatal Crashes
Weekday	11,222	19	12,131	31	11,795	23	11,927	28	12,045	21
Weekend	3,513	12	3,342	16	3,255	14	3,364	15	3,300	14
Total	14,735	31	15,473	47	15,050	37	15,291	43	15,345	35

5-Year Crash Trends by Weekday (Monday - Friday) and Weekend (Saturday & Sunday)

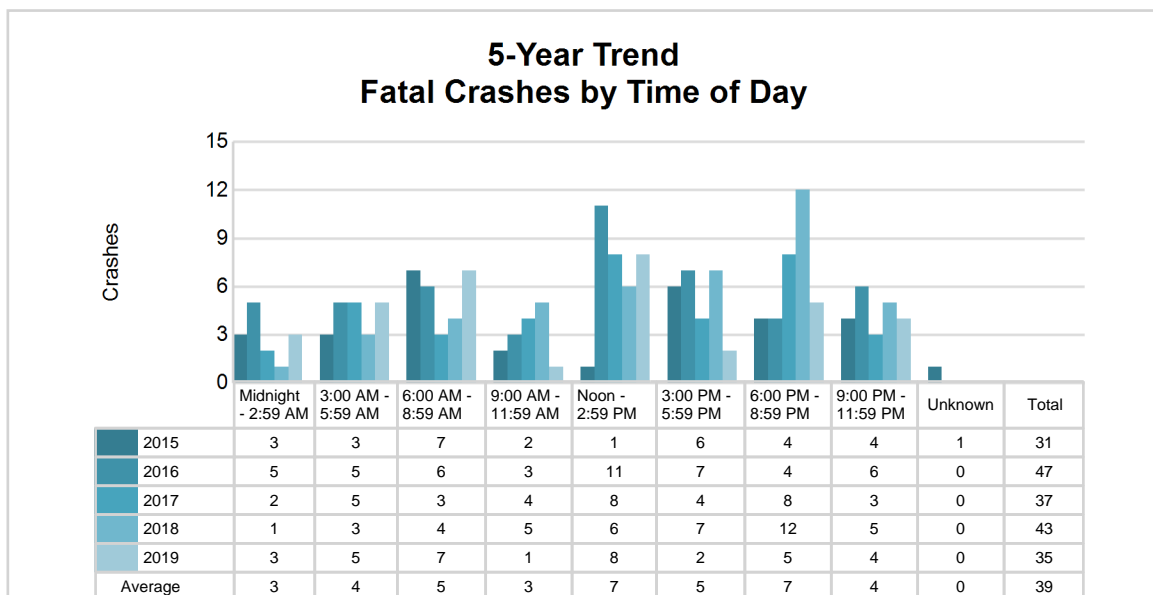
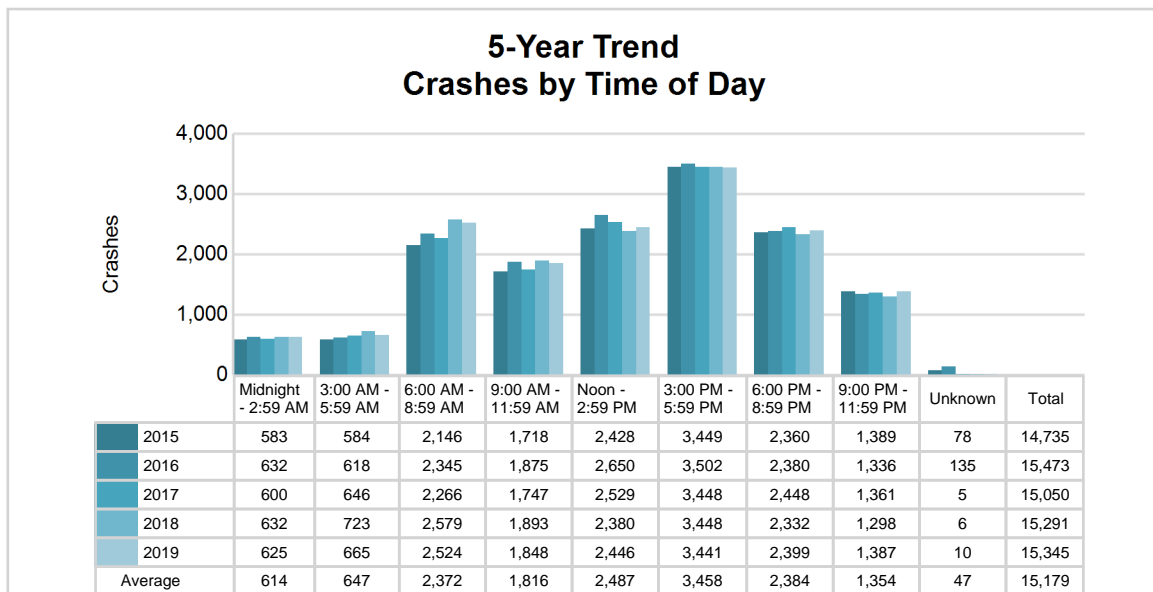


MSP Post 11 - Lansing (continued)

5-Year Trend - Crashes by Time of Day

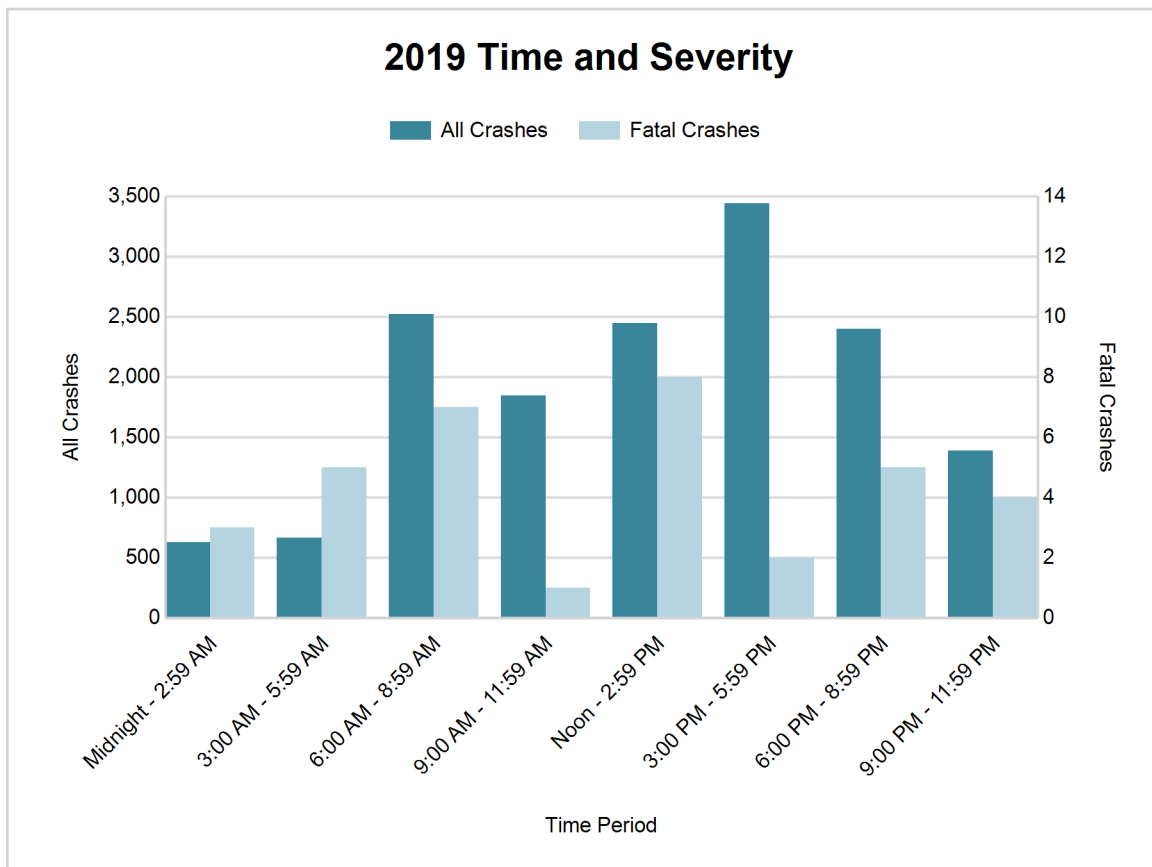
Time of Day	2015		2016		2017		2018		2019	
	Total Crashes	Fatal Crashes	Total Crashes	Fatal Crashes	Total Crashes	Fatal Crashes	Total Crashes	Fatal Crashes	Total Crashes	Fatal Crashes
Midnight - 2:59 AM	583	3	632	5	600	2	632	1	625	3
3:00 AM - 5:59 AM	584	3	618	5	646	5	723	3	665	5
6:00 AM - 8:59 AM	2,146	7	2,345	6	2,266	3	2,579	4	2,524	7
9:00 AM - 11:59 AM	1,718	2	1,875	3	1,747	4	1,893	5	1,848	1
Noon - 2:59 PM	2,428	1	2,650	11	2,529	8	2,380	6	2,446	8
3:00 PM - 5:59 PM	3,449 †	6	3,502 †	7	3,448 †	4	3,448 †	7	3,441 †	2
6:00 PM - 8:59 PM	2,360	4	2,380	4	2,448	8	2,332	12	2,399	5
9:00 PM - 11:59 PM	1,389	4	1,336	6	1,361	3	1,298	5	1,387	4
Unknown	78	1	135	0	5	0	6	0	10	0
Total	14,735	31	15,473	47	15,050	37	15,291	43	15,345	35

Note: † Indicates that the highest number of total crashes reported in the 5-year period occurred in the same time period



2019 - Time and Severity

Time of Day	All Crashes		Fatal Crashes		Injury Crashes			PDO Crashes
	Number	% of Total	Number	% of Fatal	A	B	C	Number
Midnight - 2:59 AM	625	4.1	3	8.6	10	32	70	510
3:00 AM - 5:59 AM	665	4.3	5	14.3	10	38	47	565
6:00 AM - 8:59 AM	2,524	16.4	7	20.0	32	92	211	2,182
9:00 AM - 11:59 AM	1,848	12.0	1	2.9	25	76	255	1,491
Noon - 2:59 PM	2,446	15.9	8	22.9	39	127	317	1,955
3:00 PM - 5:59 PM	3,441	22.4	2	5.7	68	176	435	2,760
6:00 PM - 8:59 PM	2,399	15.6	5	14.3	35	107	232	2,020
9:00 PM - 11:59 PM	1,387	9.0	4	11.4	27	53	124	1,179
Unknown	10	0.1	0	0.0	1	0	0	9
Total	15,345	100.0	35	100.0	247	701	1,691	12,671

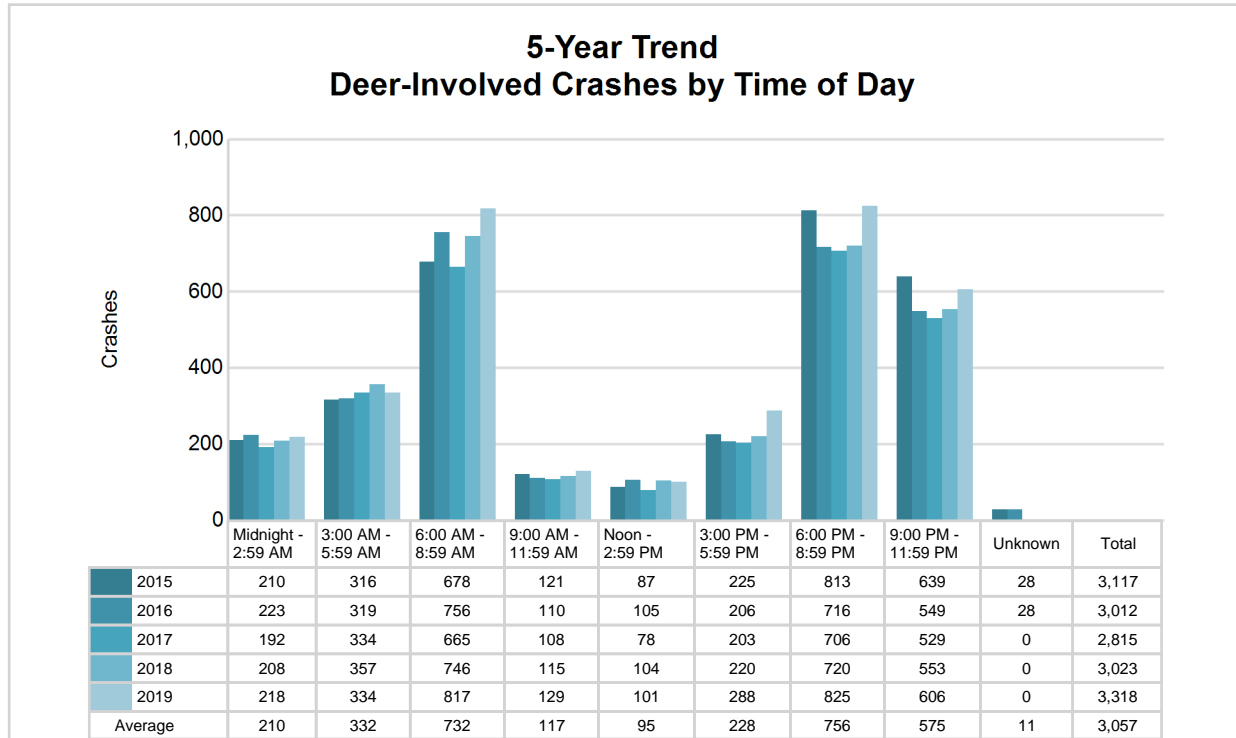


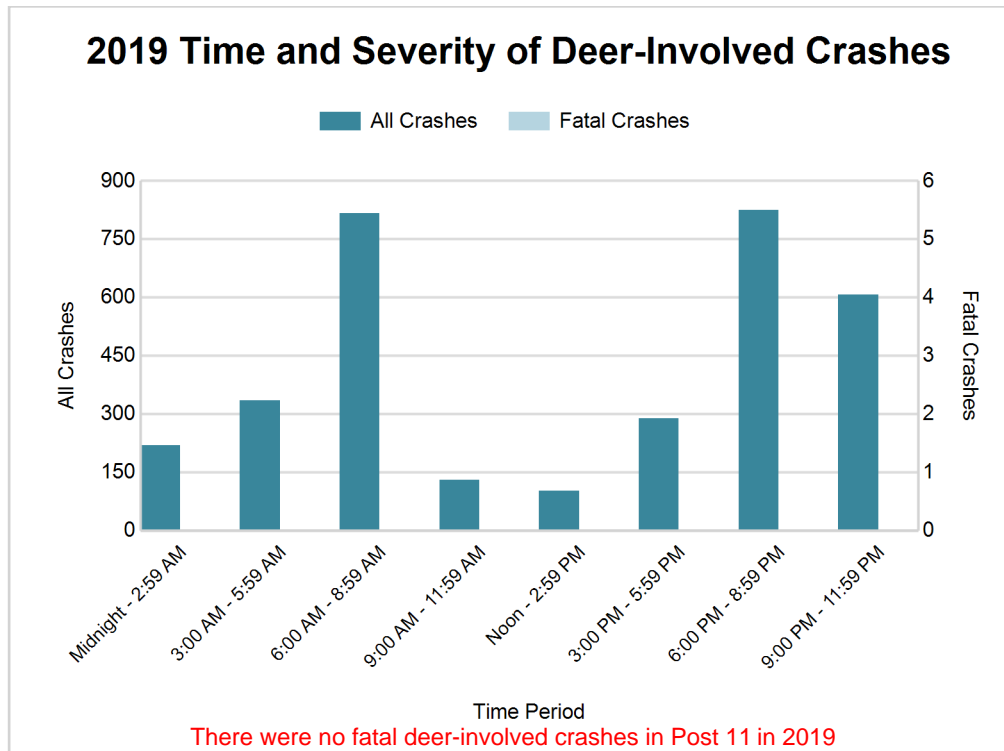
MSP Post 11 - Lansing (continued)

5-Year Trend - Deer-Involved Crashes by Time of Day

Time of Day	2015		2016		2017		2018		2019	
	Total Crashes	Fatal Crashes	Total Crashes	Fatal Crashes	Total Crashes	Fatal Crashes	Total Crashes	Fatal Crashes	Total Crashes	Fatal Crashes
Midnight - 2:59 AM	210	1	223	0	192	0	208	0	218	0
3:00 AM - 5:59 AM	316	1	319	0	334	0	357	0	334	0
6:00 AM - 8:59 AM	678	0	756	0	665	0	746	0	817	0
9:00 AM - 11:59 AM	121	0	110	0	108	0	115	0	129	0
Noon - 2:59 PM	87	0	105	0	78	0	104	0	101	0
3:00 PM - 5:59 PM	225	0	206	0	203	0	220	0	288	0
6:00 PM - 8:59 PM	813	0	716	1	706	0	720	0	825	0
9:00 PM - 11:59 PM	639	0	549	1	529	0	553	0	606	0
Unknown	28	0	28	0	0	0	0	0	0	0
Total	3,117	2	3,012	2	2,815	0	3,023	0	3,318	0

Note: † Indicates that the highest number of total crashes reported in the 5-year period occurred in the same time period





2019 - Reported Motor Vehicle Crashes by County

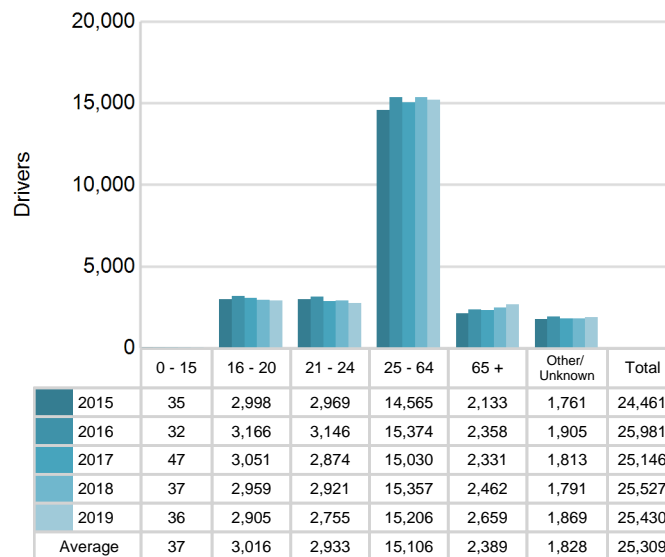
County	Crashes											Persons	
	Total	Fatal	Injury	Property Damage	Inter-state	US Route	State Route	Local Street	Alcohol-Involved	Drug-Involved	Deer-Involved	Fatalities	Injuries
Clinton	2,462	10	292	2,160	430	353	328	1,346	71	26	1,174	12	444
Eaton	3,342	9	499	2,834	689	0	1,078	1,573	116	39	1,053	13	692
Ingham	9,541	16	1,848	7,677	1,964	569	2,175	4,831	273	62	1,091	17	2,474
Total	15,345	35	2,639	12,671	3,083	922	3,581	7,750	460	127	3,318	42	3,610

MSP Post 11 - Lansing (continued)

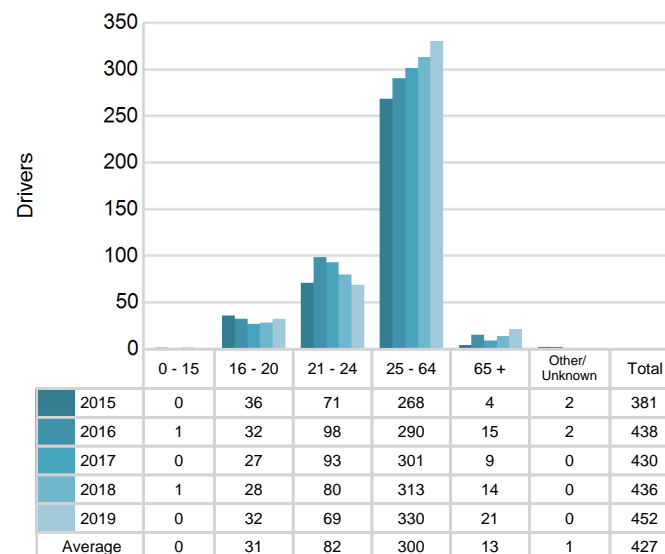
5-Year Trend - Drivers in Crashes Coded Drinking by Driver Age

Driver Age	2015		2016		2017		2018		2019	
	Total Drivers in Crashes	Total Drivers Coded Drinking	Total Drivers in Crashes	Total Drivers Coded Drinking	Total Drivers in Crashes	Total Drivers Coded Drinking	Total Drivers in Crashes	Total Drivers Coded Drinking	Total Drivers in Crashes	Total Drivers Coded Drinking
0 - 15	35	0	32	1	47	0	37	1	36	0
16 - 20	2,998	36	3,166	32	3,051	27	2,959	28	2,905	32
21 - 24	2,969	71	3,146	98	2,874	93	2,921	80	2,755	69
25 - 64	14,565	268	15,374	290	15,030	301	15,357	313	15,206	330
65 +	2,133	4	2,358	15	2,331	9	2,462	14	2,659	21
Unknown	1,761	2	1,905	2	1,813	0	1,791	0	1,869	0
Total	24,461	381	25,981	438	25,146	430	25,527	436	25,430	452

**5-Year Trend
Total Drivers in Crashes by Age**



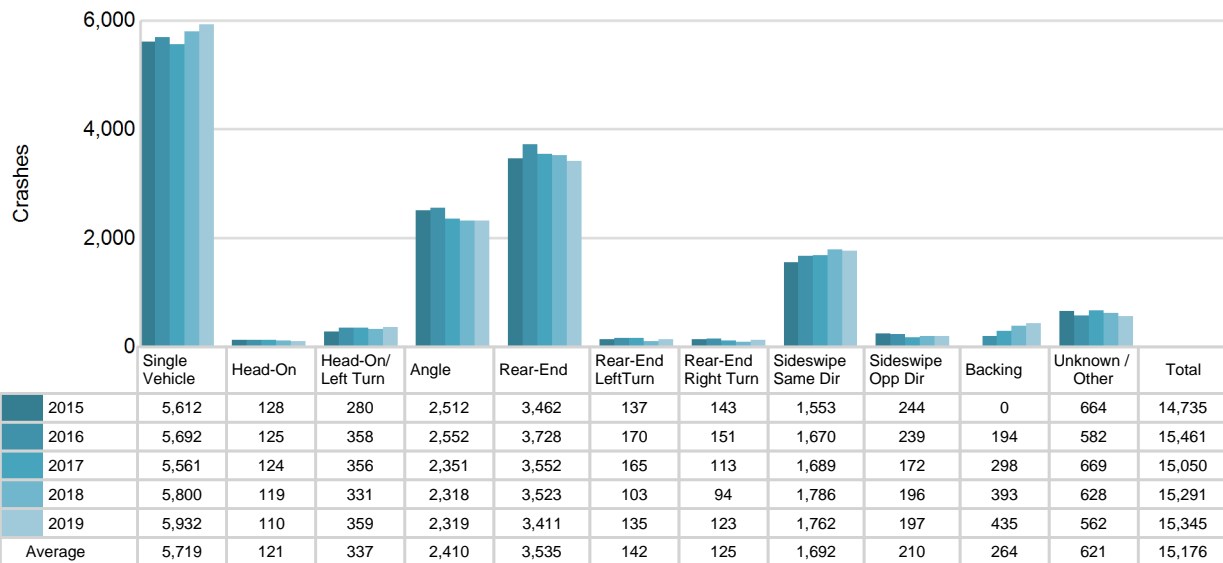
**5-Year Trend
Total Drivers Coded Drinking by Age**



5-Year Trend - Crashes by Crash Type

Crash Type	2015		2016		2017		2018		2019	
	Total Crashes	Fatal Crashes	Total Crashes	Fatal Crashes	Total Crashes	Fatal Crashes	Total Crashes	Fatal Crashes	Total Crashes	Fatal Crashes
Single motor vehicle	5,612	15	5,692	24	5,561	21	5,800	16	5,932	16
Head-on	128	5	125	5	124	0	119	5	110	6
Head-on / left turn	280	2	358	3	356	5	331	2	359	2
Angle	2,512	7	2,552	10	2,351	6	2,318	8	2,319	8
Rear-end	3,462	1	3,728	5	3,552	2	3,523	3	3,411	1
Rear-end left turn	137	0	170	0	165	0	103	2	135	0
Rear-end right turn	143	0	151	0	113	0	94	0	123	0
Sideswipe same direction	1,553	1	1,670	0	1,689	0	1,786	1	1,762	1
Sideswipe opposite direction	244	0	239	0	172	0	196	0	197	0
Backing	0	0	194	0	298	0	393	1	435	0
Other / Unknown	664	0	582	0	669	3	628	5	562	1
Uncoded and Errors	0	0	12	0	0	0	0	0	0	0
Total	14,735	31	15,473	47	15,050	37	15,291	43	15,345	35

5-Year Trend Crashes by Crash Type



2019 - Bodily Alcohol Concentration (BAC) Results Among All Vehicle Drivers in Alcohol-Involved Crashes by Age

Age Group	Drivers				BAC Result Range for Drivers Coded Drinking				
	Total Drivers in Alcohol-Involved Crashes	Total Drivers Tested in all Crashes	Total Drivers Coded Drinking, Tested	Total Drivers Coded Drinking	BAC = 0.00	BAC 0.01 g/dL to 0.07 g/dL	BAC 0.08 g/dL to 0.16 g/dL	BAC 0.17 g/dL and Above	BAC Not Reported
0 - 15	1	0	0	0	0	0	0	0	0
16 - 20	53	42	25	32	0	2	7	8	15
21 - 24	85	71	59	69	0	8	24	17	20
25 - 64	447	361	275	330	1	22	87	82	138
65 +	35	22	18	21	0	3	10	2	6
Unknown	50	1	0	0	0	0	0	0	0
Total	671	497	377	452	1	35	128	109	179

Notes: BAC measured in grams (g) per deciliter (dL).

BAC may not be reported if drivers are not tested or if the results are not available immediately (as in the case of a blood test).

A driver may be coded by the officer as drinking even though no test is administered.

Alcohol-Involved Crashes

In 2019, there were 671 drivers in alcohol-involved crashes; 452 (67.4%) of those drivers were coded as had-been-drinking by the officer on the crash form.

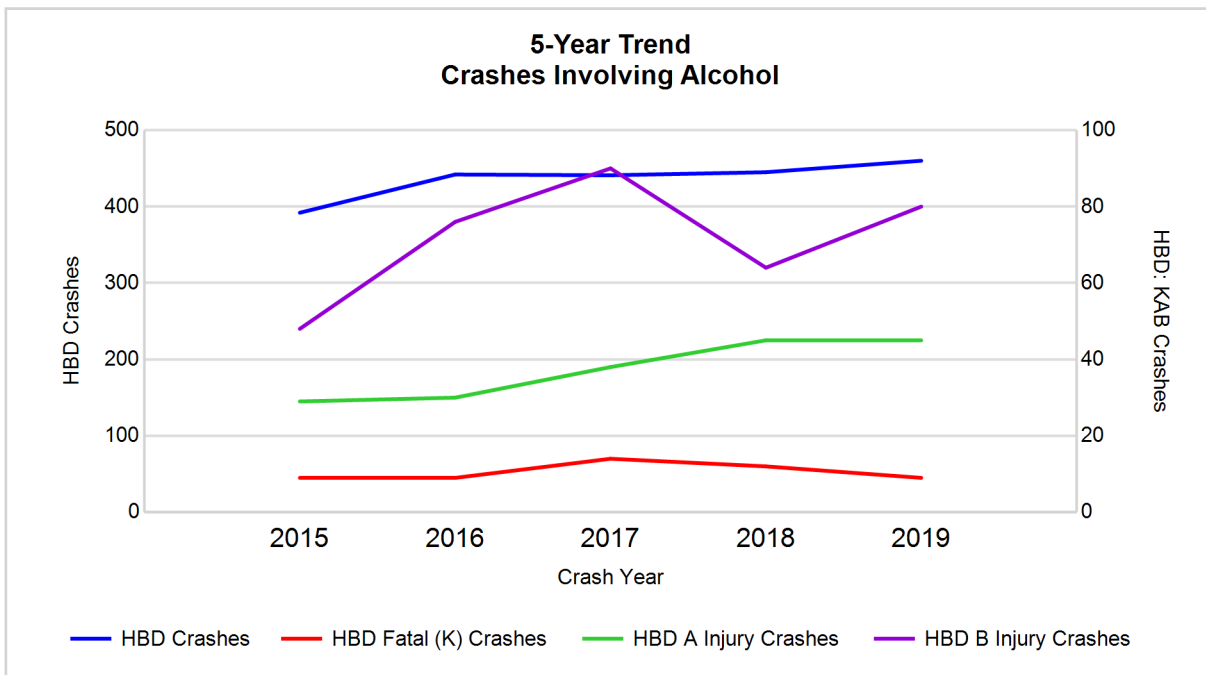
- 237 (52.4%) of the 452 drivers had a blood alcohol concentration (BAC) of 0.08 g/dL (grams per deciliter) or greater, and 109 (46.0%) of the 237 drivers had a BAC at or above 0.17 g/dL.
- 377 (83.4%) of the 452 drivers were coded as had-been-drinking and were tested for alcohol consumption.

5-Year Trend - Crashes Involving Alcohol

Year	All Crashes	HBD Crashes	% HBD	Fatal Crashes	HBD Fatal Crashes	% HBD	A Injury Crashes	HBD A Injury Crashes	% HBD	B Injury Crashes	HBD B Injury Crashes	% HBD
2015	14,735	392	2.7	31	9	29.0	200	29	14.5	579	48	8.3
2016	15,473	442	2.9	47	9	19.1	231	30	13.0	664	76	11.4
2017	15,050	441	2.9	37	14	37.8	243	38	15.6	728	90	12.4
2018	15,291	445	2.9	43	12	27.9	231	45	19.5	679	64	9.4
2019	15,345	460**	3.0**	35	9	25.7	247**	45	18.2	701	80	11.4

Note: * Indicates that the most recent year is the lowest number or percentage reported in the 5-year period in that column

** Indicates that the most recent year is the highest number or percentage reported in the 5-year period in that column



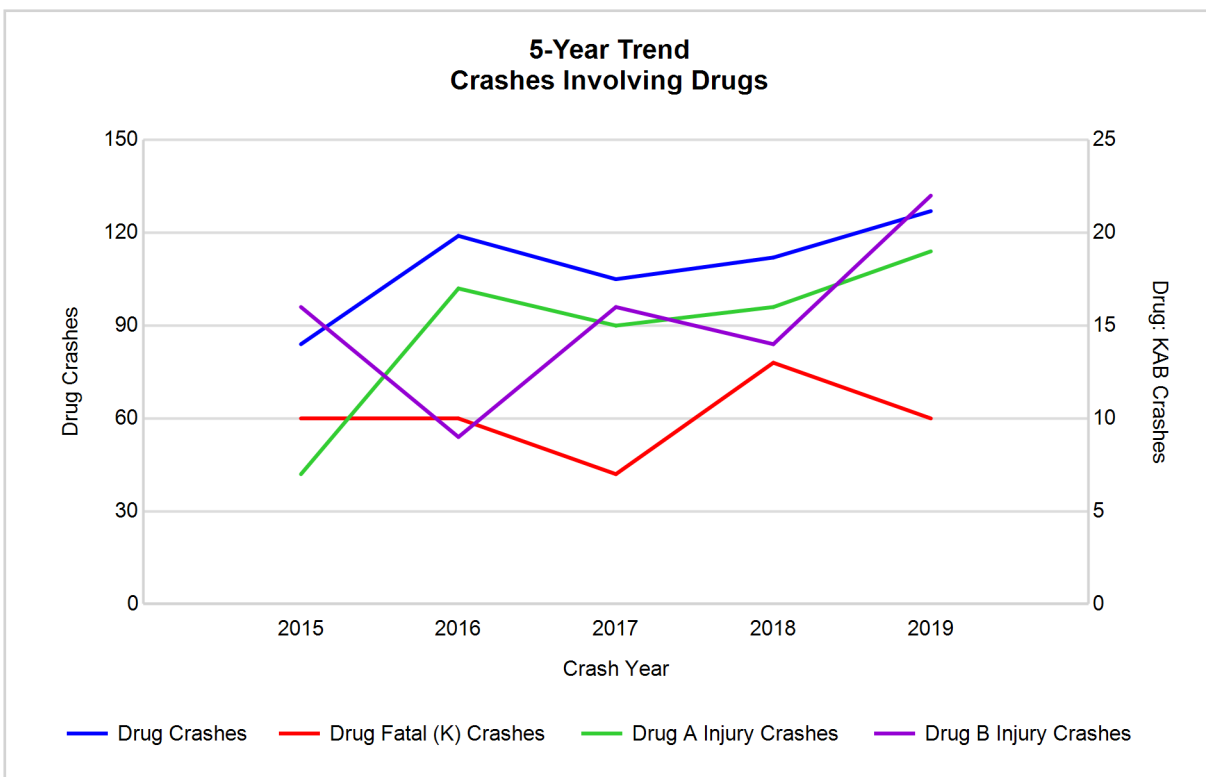
Note: Had-Been-Drinking (HBD)

5-Year Trend - Crashes Involving Drugs

Year	All Crashes	Drug Crashes	% Drug	Fatal Crashes	Drug Fatal Crashes	% Drug	A Injury Crashes	Drug A Injury Crashes	% Drug	B Injury Crashes	Drug B Injury Crashes	% Drug
2015	14,735	84	0.6	31	10	32.3	200	7	3.5	579	16	2.8
2016	15,473	119	0.8	47	10	21.3	231	17	7.4	664	9	1.4
2017	15,050	105	0.7	37	7	18.9	243	15	6.2	728	16	2.2
2018	15,291	112	0.7	43	13	30.2	231	16	6.9	679	14	2.1
2019	15,345	127**	0.8	35	10	28.6	247**	19**	7.7**	701	22**	3.1**

Note: * Indicates that the most recent year is the lowest number or percentage reported in the 5-year period in that column

** Indicates that the most recent year is the highest number or percentage reported in the 5-year period in that column

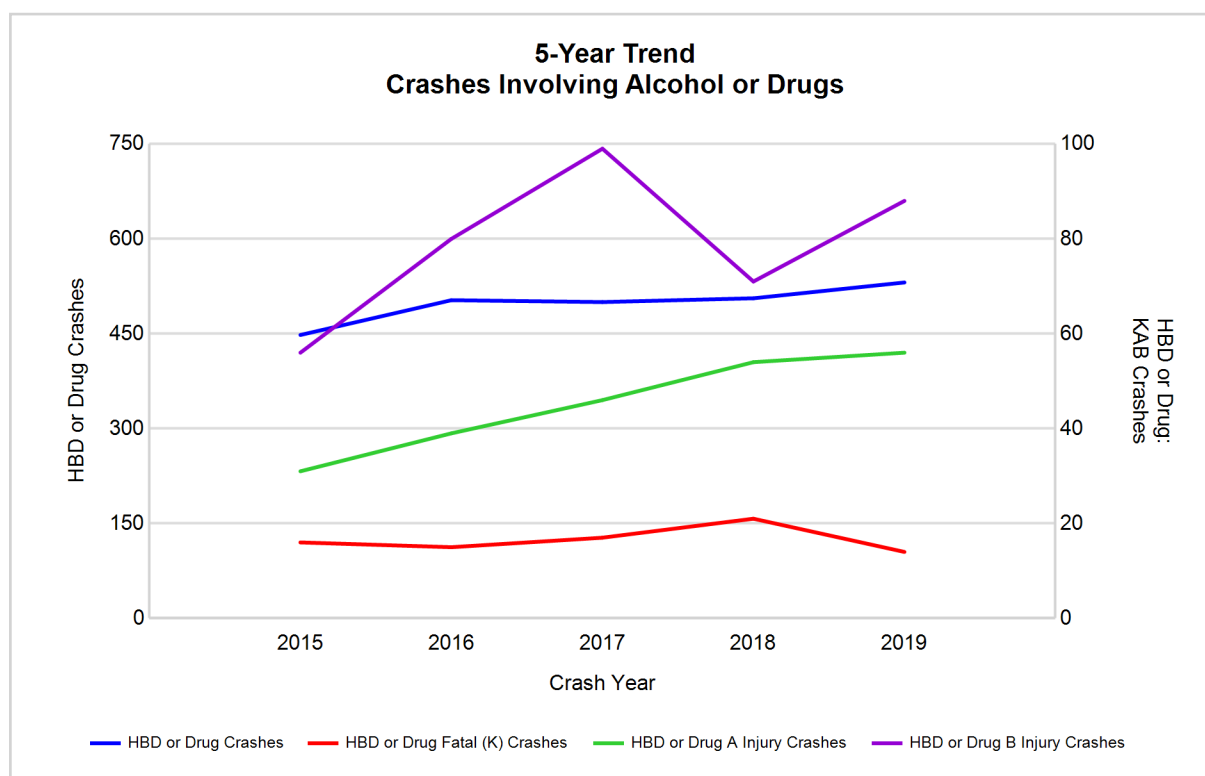


5-Year Trend - Crashes Involving Alcohol or Drugs

Year	All Crashes	HBD or Drug Crashes	% HBD or Drug	Fatal Crashes	HBD or Drug Fatal Crashes	% HBD or Drug	A Injury Crashes	HBD or Drug A Injury Crashes	% HBD or Drug	B Injury Crashes	HBD or Drug B Injury Crashes	% HBD or Drug
2015	14,735	448	3.0	31	16	51.6	200	31	15.5	579	56	9.7
2016	15,473	503	3.3	47	15	31.9	231	39	16.9	664	80	12.0
2017	15,050	500	3.3	37	17	45.9	243	46	18.9	728	99	13.6
2018	15,291	506	3.3	43	21	48.8	231	54	23.4	679	71	10.5
2019	15,345	531**	3.5**	35	14*	40.0	247**	56**	22.7	701	88	12.6

Note: * Indicates that the most recent year is the lowest number or percentage reported in the 5-year period in that column

** Indicates that the most recent year is the highest number or percentage reported in the 5-year period in that column



Note: Had-Been-Drinking (HBD)

2019 - Restraints Worn Among Vehicle Drivers and Injured Passengers by Vehicle Type

Vehicle Type	Total Occupants			Fatalities			A - Suspected Serious			B - Suspected Minor			C - Possible Injury			No Injury		
	Total	Used Restraint	%	Total	Used Restraint	%	Total	Used Restraint	%	Total	Used Restraint	%	Total	Used Restraint	%	Total	Used Restraint	%
Passenger car, SUV, van	21,621	19,928	92.2	25	16	64.0	198	157	79.3	709	641	90.4	2,058	1,972	95.8	17,552	17,142	97.7
Motor home	73	64	87.7	0	0	0.0	1	1	100.0	2	0	0.0	2	2	100.0	63	61	96.8
Pickup truck	2,701	2,459	91.0	2	0	0.0	19	15	78.9	73	60	82.2	169	156	92.3	2,285	2,228	97.5
Small truck under 10,000 lbs. GVWR	110	97	88.2	0	0	0.0	3	3	100.0	5	5	100.0	3	3	100.0	88	86	97.7
Motorcycle	142	90	63.4	6	3	50.0	31	19	61.3	48	32	66.7	23	16	69.6	29	20	69.0
Moped / goped	39	8	20.5	2	1	50.0	6	0	0.0	13	3	23.1	10	4	40.0	8	0	0.0
Go-cart / golf cart	1	1	100.0	0	0	0.0	0	0	0.0	0	0	0.0	0	0	0.0	1	1	100.0
Snowmobile	0	0	0.0	0	0	0.0	0	0	0.0	0	0	0.0	0	0	0.0	0	0	0.0
Off-Road Vehicle - ORV / All-Terrain Vehicle - ATV	8	0	0.0	0	0	0.0	1	0	0.0	5	0	0.0	1	0	0.0	1	0	0.0
Other	168	120	71.4	0	0	0.0	1	1	100.0	3	3	100.0	6	5	83.3	131	111	84.7
Truck/bus over 10,000 lbs.	767	691	90.1	0	0	0.0	4	1	25.0	8	4	50.0	32	17	53.1	700	669	95.6
Unknown	609	0	0.0	0	0	0.0	0	0	0.0	0	0	0.0	0	0	0.0	2	0	0.0
Total	26,239	23,458	89.4	35	20	57.1	264	197	74.6	866	748	86.4	2,304	2,175	94.4	20,860	20,318	97.4

Note: Restraint Use includes shoulder belt only used, lap belt only used, both lap and shoulder belts used, child restraint used, restraint failure, and helmet worn.

2019 - Restraints Worn Among Vehicle Drivers and Injured Passengers by Age

Age Group	Total Occupants			Fatalities			A - Suspected Serious			B - Suspected Minor			C - Possible Injury			No Injury		
	Total	Used Restraint	%	Total	Used Restraint	%	Total	Used Restraint	%	Total	Used Restraint	%	Total	Used Restraint	%	Total	Used Restraint	%
0 - 15	261	221	84.7	3	2	66.7	15	8	53.3	48	38	79.2	163	143	87.7	32	30	93.8
16 - 20	3,034	2,918	96.2	5	2	40.0	32	23	71.9	145	118	81.4	264	249	94.3	2,584	2,526	97.8
21 - 24	2,823	2,711	96.0	4	1	25.0	21	17	81.0	93	77	82.8	224	212	94.6	2,473	2,404	97.2
25 - 64	15,508	14,935	96.3	14	8	57.1	172	127	73.8	469	409	87.2	1,370	1,298	94.7	13,445	13,093	97.4
65 +	2,744	2,672	97.4	9	7	77.8	24	22	91.7	111	106	95.5	283	273	96.5	2,313	2,264	97.9
Unknown	1,869	1	0.1	0	0	0.0	0	0	0.0	0	0	0.0	0	0	0.0	13	1	7.7
Total	26,239	23,458	89.4	35	20	57.1	264	197	74.6	866	748	86.4	2,304	2,175	94.4	20,860	20,318	97.4

Note: Restraint Use includes shoulder belt only used, lap belt only used, both lap and shoulder belts used, child restraint used, restraint failure, and helmet worn.

5-Year Trend - Restraint Use Among Drivers

Restraint Use	2015			2016			2017			2018			2019		
	Drivers	Fatal Drivers	Injured Drivers	Drivers	Fatal Drivers	Injured Drivers	Drivers	Fatal Drivers	Injured Drivers	Drivers	Fatal Drivers	Injured Drivers	Drivers	Fatal Drivers	Injured Drivers
No belts available	87	0	9	82	0	13	40	0	5	38	0	5	40	0	4
Shoulder belt only used	14	0	3	53	0	7	91	0	14	86	0	9	84	1	9
Lap belt only used	77	2	7	54	0	4	56	0	7	51	1	7	60	0	7
Both lap & shoulder belts used	21,836	9	2,027	23,126	13	2,341	22,278	5	2,324	22,660	20	2,228	22,525	8	2,352
No belts used	140	6	46	130	8	44	124	4	41	128	7	53	123	6	61
Child restraint used	0	0	0	5	0	1	3	0	0	0	0	0	2	0	0
Child restraint not used, unavailable or improper use	1	0	0	0	0	0	0	0	0	0	0	0	0	0	0
Restraint failure	8	0	2	9	0	0	4	0	1	11	0	0	4	0	0
Restraint use unknown	486	2	53	1,569	2	65	2,223	3	77	2,353	0	71	2,414	3	78
Helmet worn	98	3	66	92	5	75	97	8	66	81	3	58	90	4	66
Helmet not worn	73	2	56	80	7	58	80	1	63	88	2	64	76	2	57
Helmet use unknown	13	1	3	16	0	9	11	1	5	7	1	4	3	2	0
Uncoded & errors	1,628	0	1	765	0	2	139	0	1	24	0	0	9	0	0
Total	24,461	25	2,273	25,981	35	2,619	25,146	22	2,604	25,527	34	2,499	25,430	26	2,634

5-Year Trend - Restraint Use Among Drivers Coded Drinking

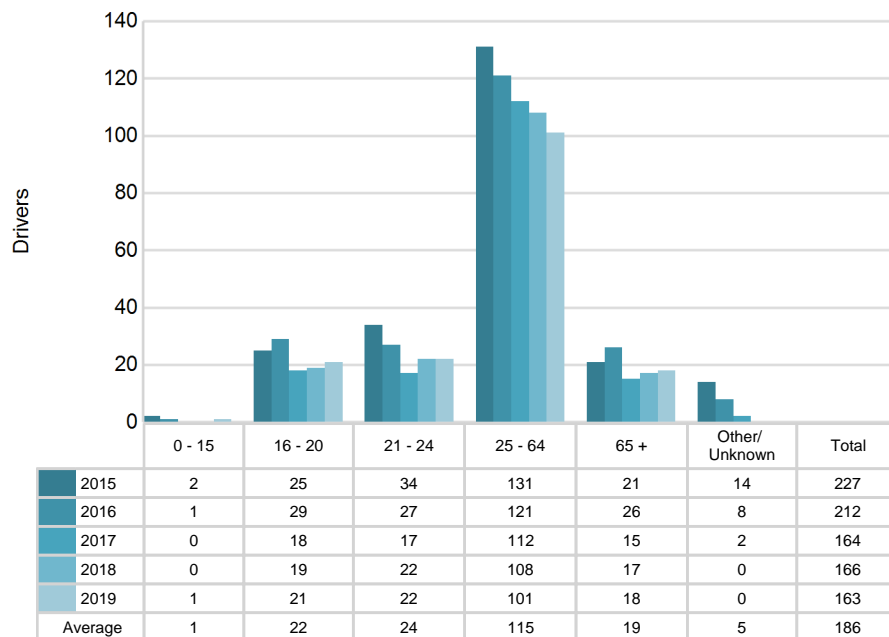
Restraint Use	2015			2016			2017			2018			2019		
	Drivers	Fatal Drivers	Injured Drivers	Drivers	Fatal Drivers	Injured Drivers	Drivers	Fatal Drivers	Injured Drivers	Drivers	Fatal Drivers	Injured Drivers	Drivers	Fatal Drivers	Injured Drivers
No belts available	1	0	1	1	0	1	0	0	0	0	0	0	1	0	1
Shoulder belt only used	0	0	0	1	0	0	0	0	0	2	0	1	4	0	0
Lap belt only used	2	2	0	0	0	0	2	0	1	0	0	0	1	0	1
Both lap & shoulder belts used	274	2	73	336	3	103	307	2	102	322	2	111	320	0	114
No belts used	16	2	10	16	2	10	27	1	17	27	3	17	30	2	20
Child restraint used	0	0	0	0	0	0	0	0	0	0	0	0	0	0	0
Child restraint not used, unavailable or improper use	0	0	0	0	0	0	0	0	0	0	0	0	0	0	0
Restraint failure	0	0	0	0	0	0	0	0	0	0	0	0	0	0	0
Restraint use unknown	70	0	17	66	0	21	82	2	29	78	0	31	82	3	27
Helmet worn	4	0	3	2	2	0	3	1	2	3	1	2	4	0	4
Helmet not worn	13	1	9	13	2	9	8	1	7	4	1	3	10	1	9
Helmet use unknown	1	1	0	1	0	0	1	0	1	0	0	0	0	0	0
Uncoded & errors	0	0	0	2	0	0	0	0	0	0	0	0	0	0	0
Total	381	8	113	438	9	144	430	7	159	436	7	165	452	6	176

5-Year Trend - Seatbelt Not Used Among Drivers by Age

Age Group	2015			2016			2017			2018			2019		
	Drivers	Fatal Drivers	Injured Drivers	Drivers	Fatal Drivers	Injured Drivers	Drivers	Fatal Drivers	Injured Drivers	Drivers	Fatal Drivers	Injured Drivers	Drivers	Fatal Drivers	Injured Drivers
0 - 15	2	0	0	1	0	1	0	0	0	0	0	0	1	0	0
16 - 20	25	0	7	29	0	11	18	1	5	19	0	8	21	2	11
21 - 24	34	0	11	27	1	9	17	0	5	22	1	8	22	2	6
25 - 64	131	5	36	121	4	28	112	3	33	108	4	36	101	2	41
65 +	21	1	1	26	3	8	15	0	3	17	2	6	18	0	7
Unknown	14	0	0	8	0	0	2	0	0	0	0	0	0	0	0
Total	227	6	55	212	8	57	164	4	46	166	7	58	163	6	65

Note: Seatbelt Not Used includes no belts available or no belts used.

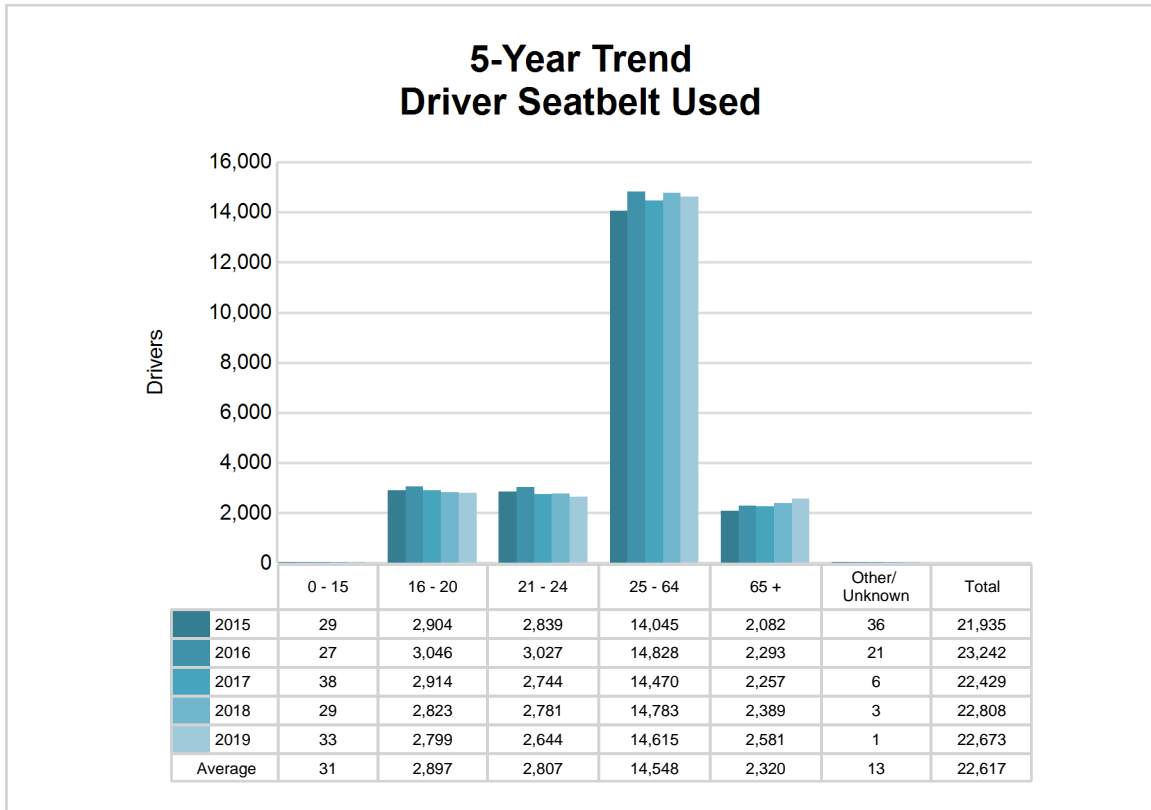
5-Year Trend Driver Seatbelt Not Used



5-Year Trend - Seatbelt Used Among Drivers by Age

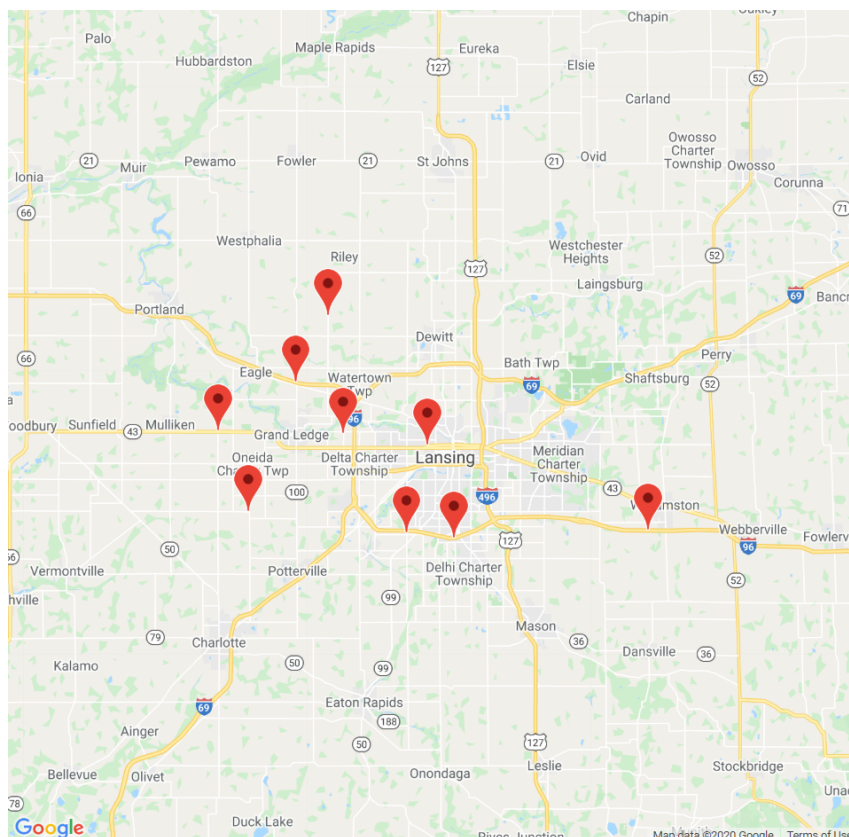
Age Group	2015			2016			2017			2018			2019		
	Drivers	Fatal Drivers	Injured Drivers	Drivers	Fatal Drivers	Injured Drivers	Drivers	Fatal Drivers	Injured Drivers	Drivers	Fatal Drivers	Injured Drivers	Drivers	Fatal Drivers	Injured Drivers
0 - 15	29	0	3	27	0	2	38	0	7	29	0	0	33	0	3
16 - 20	2,904	1	292	3,046	2	297	2,914	0	310	2,823	3	292	2,799	1	273
21 - 24	2,839	2	241	3,027	1	276	2,744	0	263	2,781	3	240	2,644	0	244
25 - 64	14,045	6	1,299	14,828	7	1,513	14,470	4	1,505	14,783	13	1,427	14,615	5	1,533
65 +	2,082	2	204	2,293	3	264	2,257	1	261	2,389	2	285	2,581	3	315
Unknown	36	0	0	21	0	0	6	0	0	3	0	0	1	0	0
Total	21,935	11	2,039	23,242	13	2,352	22,429	5	2,346	22,808	21	2,244	22,673	9	2,368

Note: Seatbelt Used includes shoulder belt only used, lap belt only used, both lap and shoulder belts used, and restraint failure.



5-Year Trend - Drivers in Crashes by Hazardous Action

Hazardous Action	2015		2016		2017		2018		2019	
	Total Drivers in Crashes	Drivers in Fatal Crashes	Total Drivers in Crashes	Drivers in Fatal Crashes	Total Drivers in Crashes	Drivers in Fatal Crashes	Total Drivers in Crashes	Drivers in Fatal Crashes	Total Drivers in Crashes	Drivers in Fatal Crashes
None	13,519	26	13,924	36	13,293	23	13,626	33	13,709	23
Speed too fast	1,368	6	1,460	12	1,459	9	1,552	11	1,403	8
Speed too slow	24	0	22	0	15	0	27	0	14	0
Failed to yield	2,237	5	2,471	7	2,465	7	2,366	8	2,339	5
Disregard traffic control	631	3	621	3	615	2	653	2	638	2
Drove wrong way	28	1	33	0	22	0	26	0	17	0
Drove left of center	89	2	94	1	76	0	87	2	82	2
Improper passing	115	0	124	0	110	0	117	0	123	1
Improper lane use	542	0	637	0	611	0	600	1	639	1
Improper turn	319	0	300	1	341	1	332	0	327	1
Improper/no signal	42	0	30	0	18	0	17	0	14	0
Improper backing	427	0	444	0	399	0	417	0	439	0
Unable to stop in assured clear distance	3,145	1	3,533	2	3,364	2	3,269	3	3,211	1
Other	557	2	560	1	597	2	670	2	617	1
Unknown	560	8	855	7	1,038	7	1,098	6	1,083	8
Reckless driving	108	0	91	1	132	0	104	2	122	4
Careless/negligent driving	578	2	595	5	527	2	547	6	649	1
Uncoded & errors	172	0	187	1	64	0	19	0	4	0
Total	24,461	56	25,981	77	25,146	55	25,527	76	25,430	58



The picture above represents all 2019 alcohol-involved fatal crashes in Post 11.

In 2019, there were 460 alcohol-involved crashes in Post 11:

9	K - Fatal Crashes
45	A - Suspected Serious Injury Crashes
80	B - Suspected Minor Injury Crashes
89	C - Possible Injury Crashes
237	O - Property Damage Only/No Injury Crashes

Office of Highway Safety Planning

Physical Address:
7150 Harris Drive
Dimondale, Michigan 48821

Mailing Address:
P.O. Box 30634
Lansing, Michigan 48909

Phone: (517) 284-3112
Fax: (517) 284-3151

Find us on the web:
MichiganTrafficCrashFacts.org

