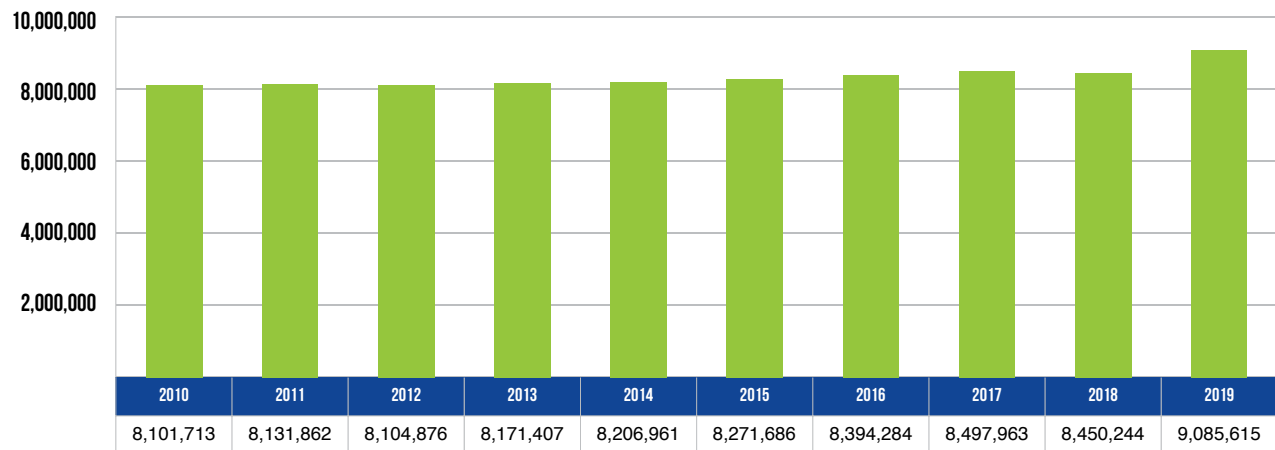


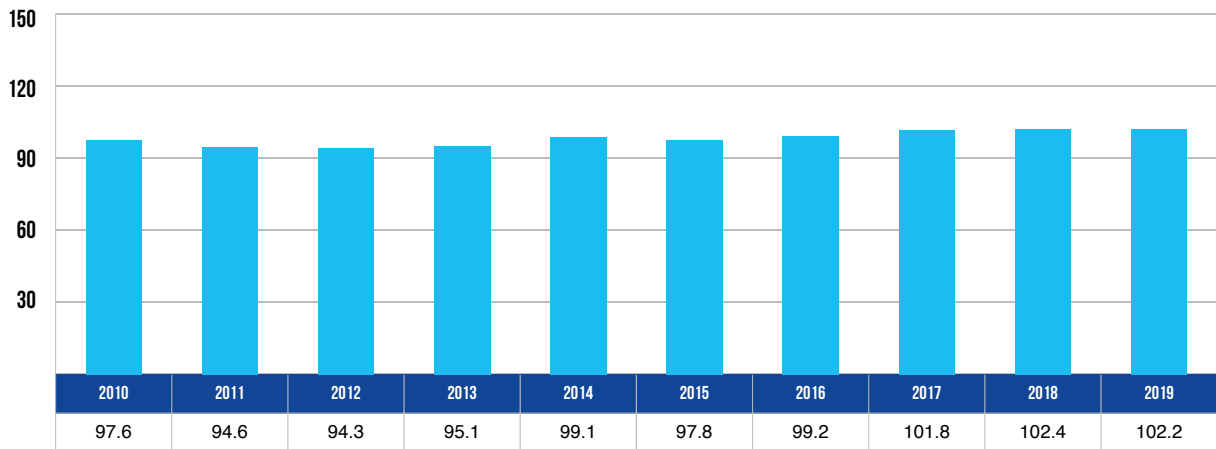
10 YEAR TRENDS-STATEWIDE

VEHICLE REGISTRATIONS



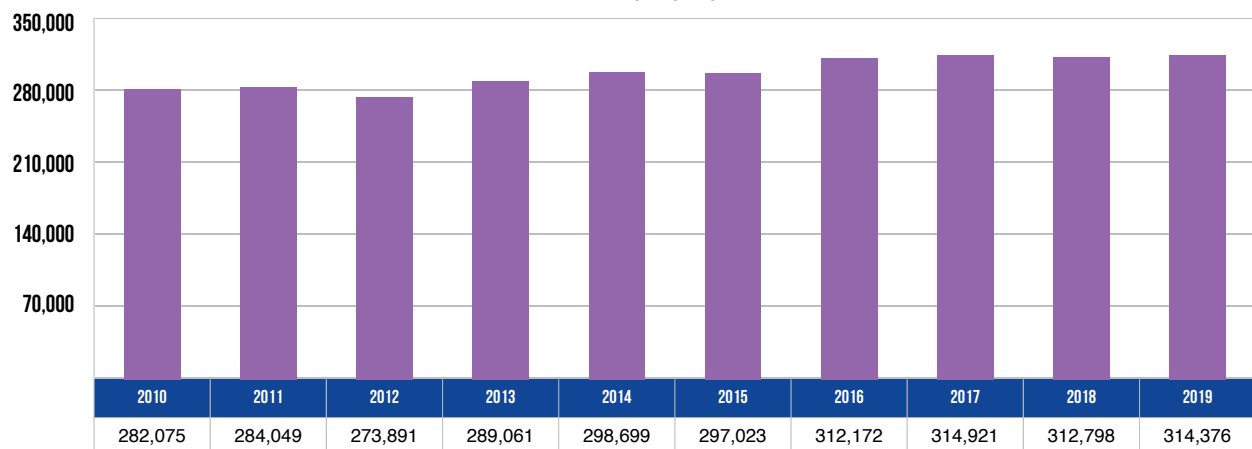
Vehicle registrations increased 12.1 percent over the 10-year period.

VEHICLE MILES TRAVELED (BILLIONS)



Vehicle miles traveled increased 4.6 percent over the 10-year period.

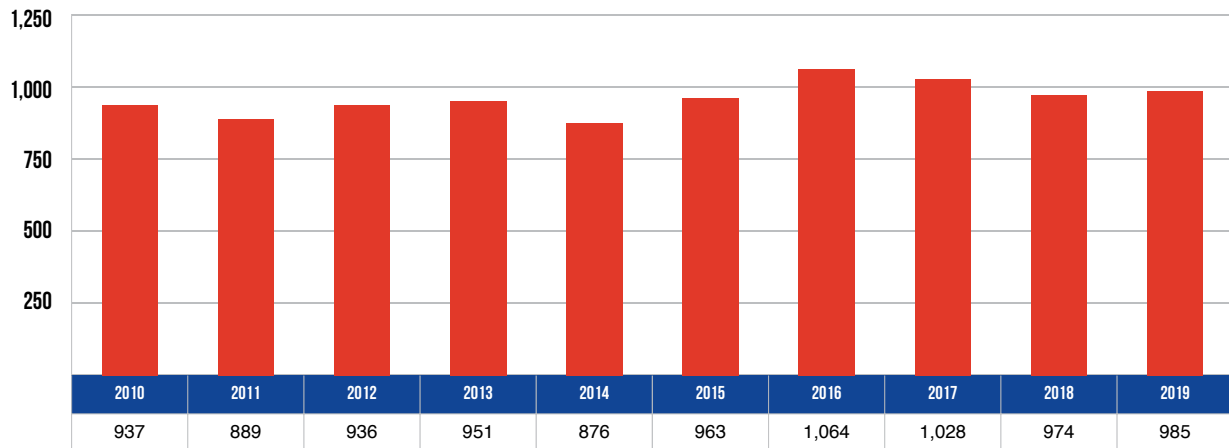
CRASHES



There were 314,376 total crashes statewide in 2019--an 11.5 percent increase from 2010.

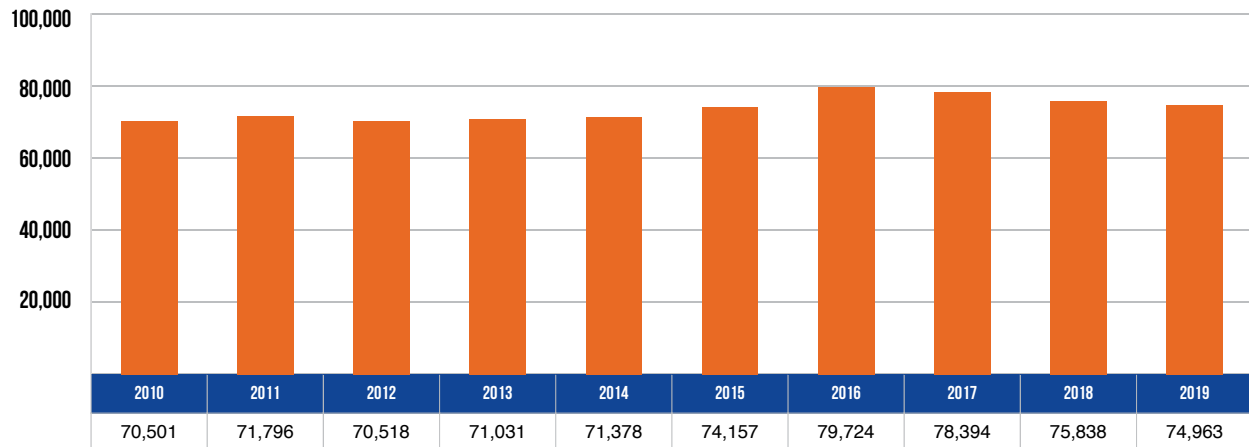
10 YEAR TRENDS-STATEWIDE (CONTINUED)

DEATHS



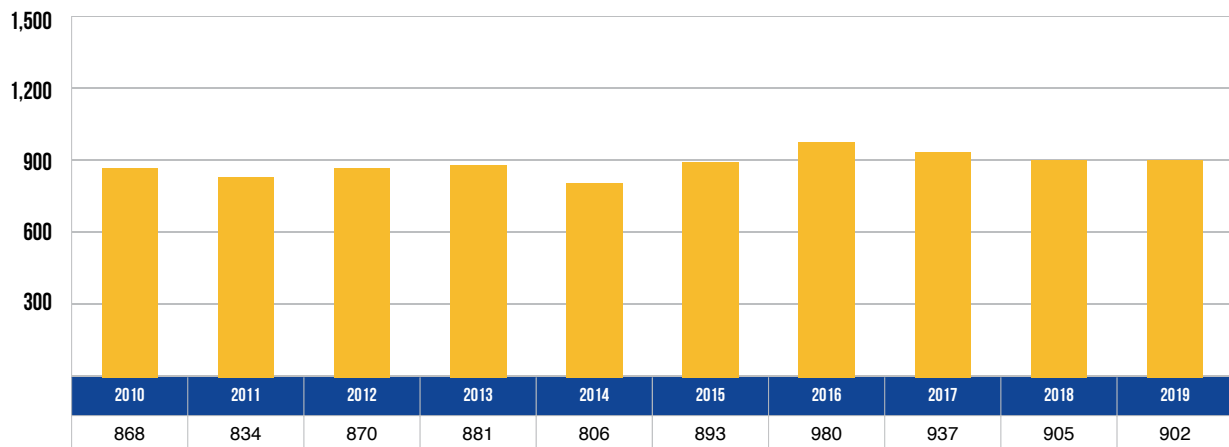
In 2019, 985 people died in motor vehicle crashes--an increase of 5.1 percent from 2010.

INJURIES



In 2019, 74,963 people received injuries in motor vehicle crashes--up 6.3 percent from 70,501 in 2010.

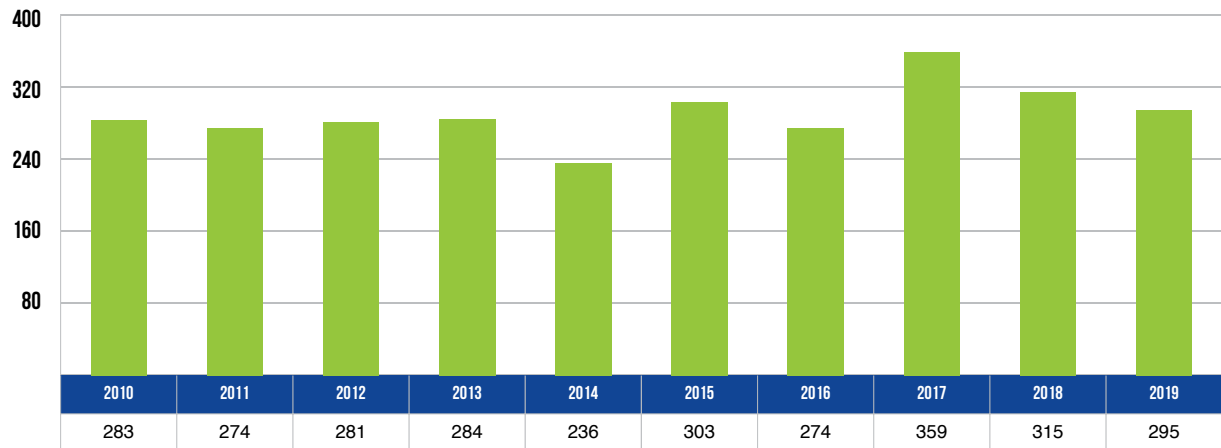
FATAL CRASHES



In 2019, there were 902 fatal crashes--up 3.9 percent from 868 in 2010.

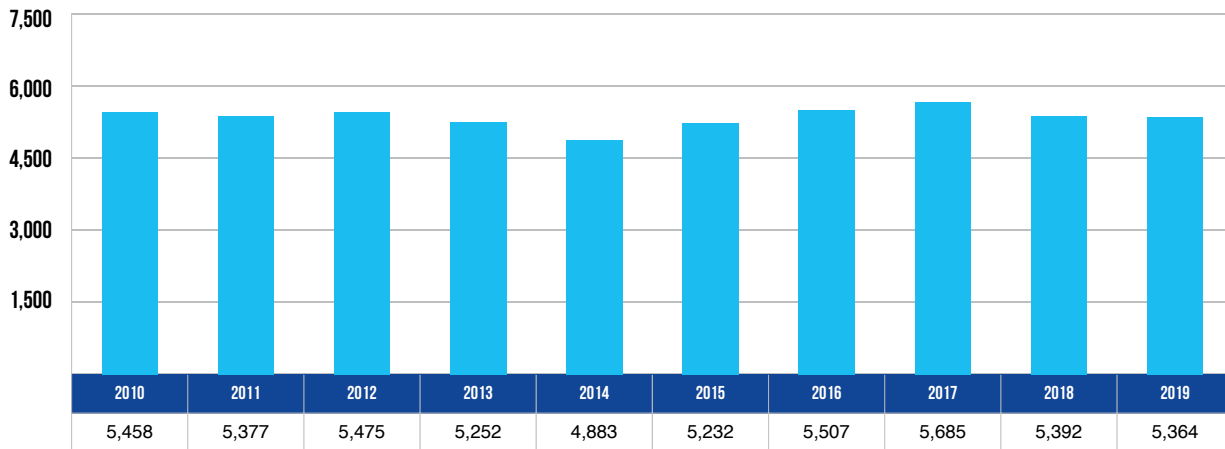
10 YEAR TRENDS-STATEWIDE (CONTINUED)

ALCOHOL-INVOLVED DEATHS



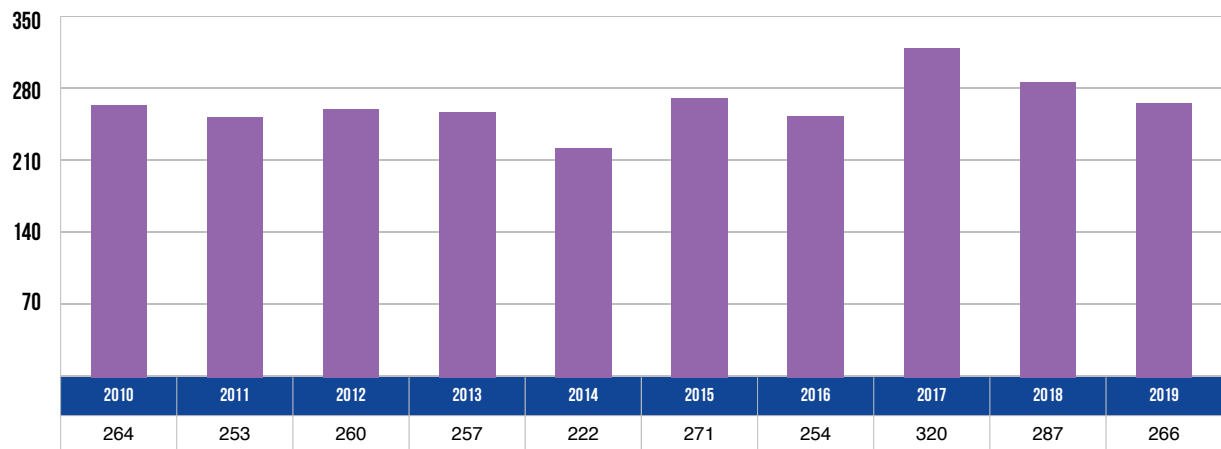
There were 295 deaths in alcohol-involved crashes in 2019--up 4.2 percent from 2010.

ALCOHOL-INVOLVED INJURIES



There were 5,364 injuries in alcohol-involved crashes in 2019--down 1.7 percent from 2010.

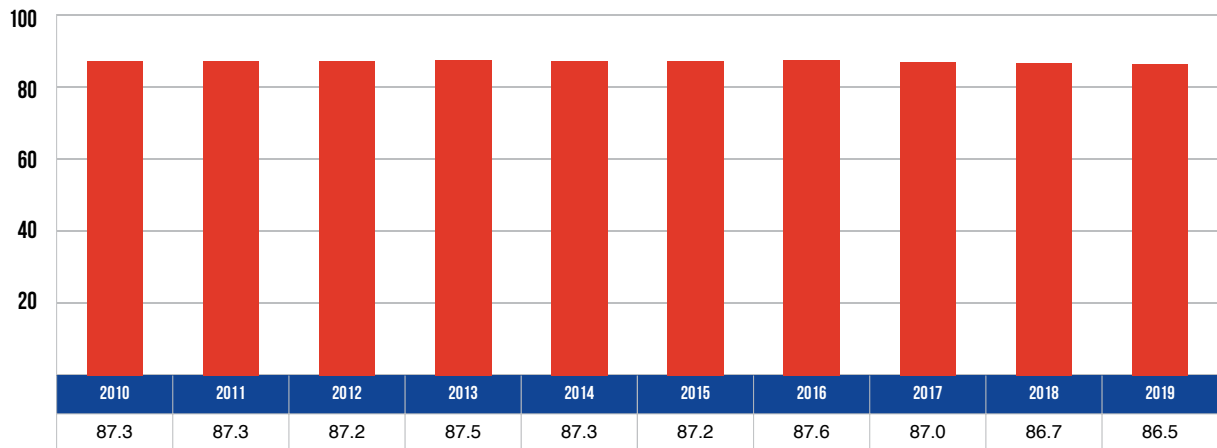
ALCOHOL-INVOLVED FATAL CRASHES



There were 266 alcohol-involved fatal crashes in 2019--up 0.8 percent from 2010.

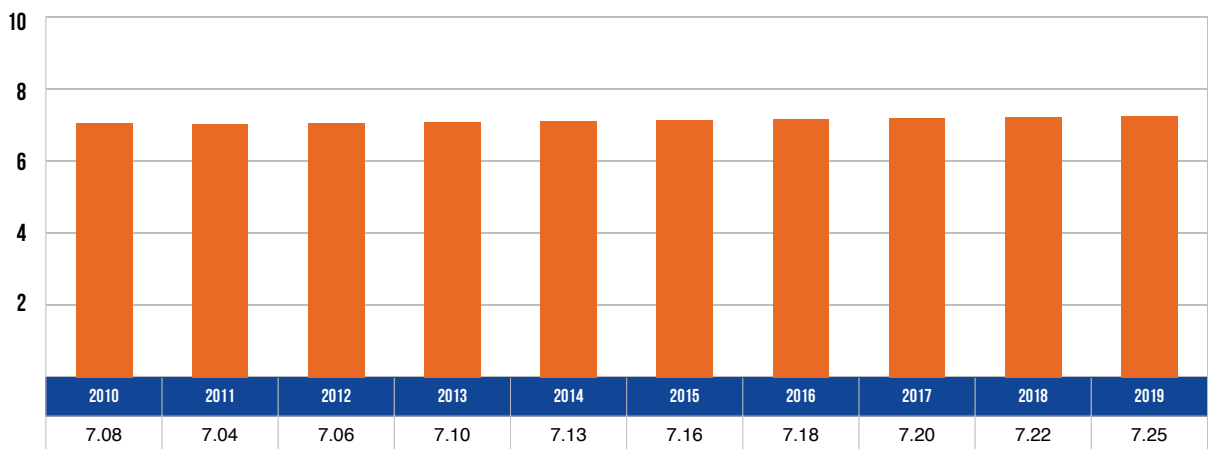
10 YEAR TRENDS-STATEWIDE (CONTINUED)

RESTRAINT USAGE IN CRASHES



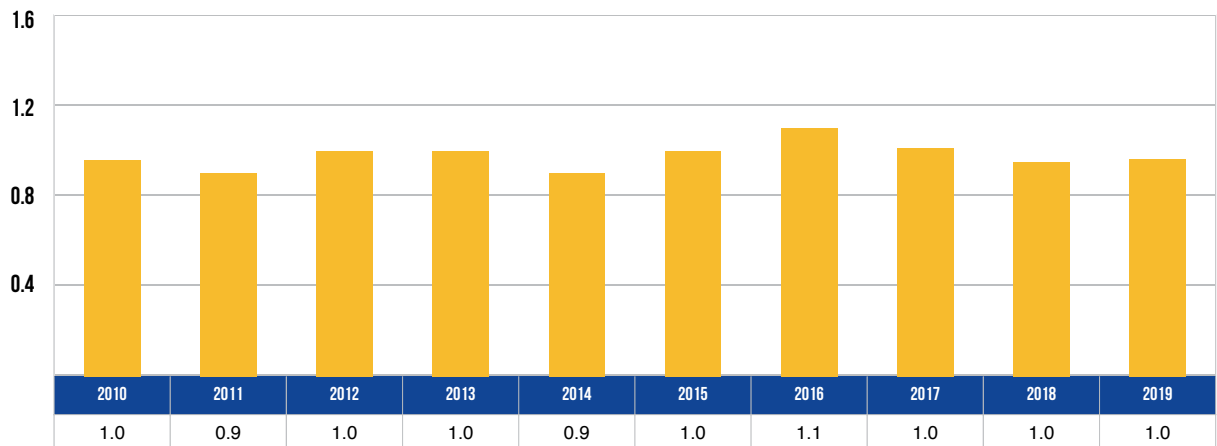
The percentage of motor vehicle occupants using restraints as reported by police in traffic crashes was 86.5 percent in 2019, down 0.9% from 2010.

DRIVERS IN MICHIGAN (MILLIONS)



There were 7,253,407 licensed drivers on Michigan roadways in 2019--an increase of 2.5 percent from 2010.

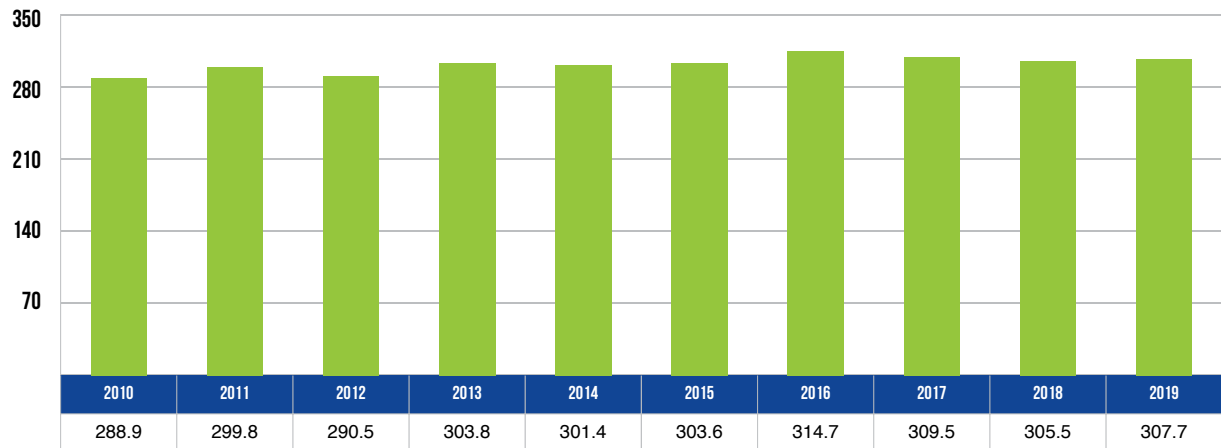
FATALITIES PER 100 MILLION VEHICLE MILES TRAVELED



The death rate of 0.964 fatalities per 100 million VMT in 2019 was an increase of 0.5% from the death rate of 0.960 in 2010.

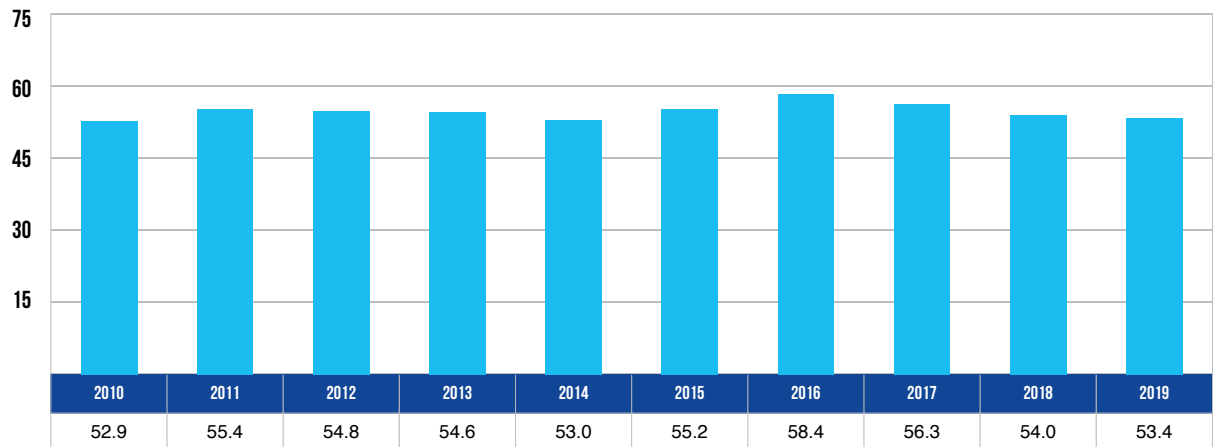
10 YEAR TRENDS-STATEWIDE (CONTINUED)

TOTAL CRASHES PER 100 MILLION VEHICLE MILES TRAVELED



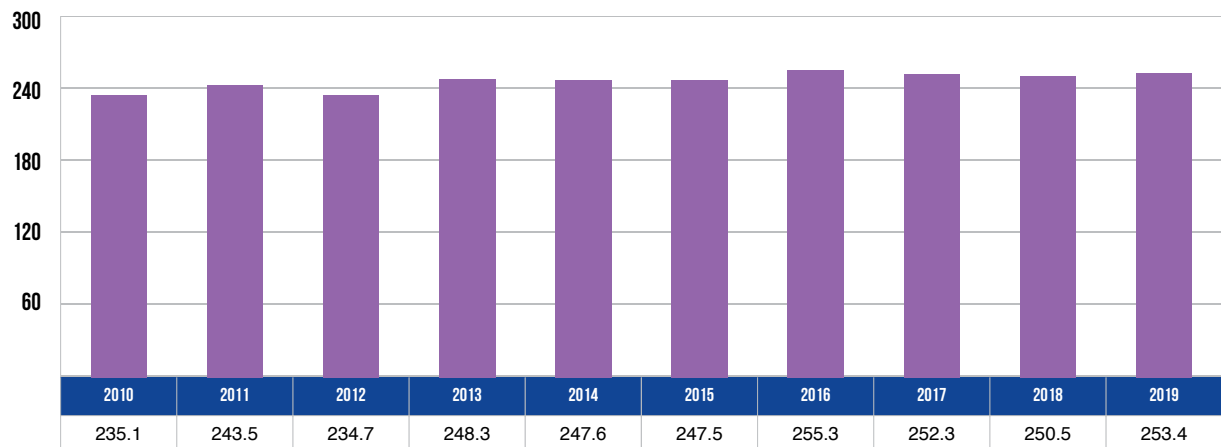
The total crash rate of 307.7 crashes in 2019 was a 6.5 percent increase from 2010.

INJURY CRASHES PER 100 MILLION VEHICLE MILES TRAVELED



The injury crash rate of 53.4 crashes in 2019 was a 0.9 percent increase from 2010.

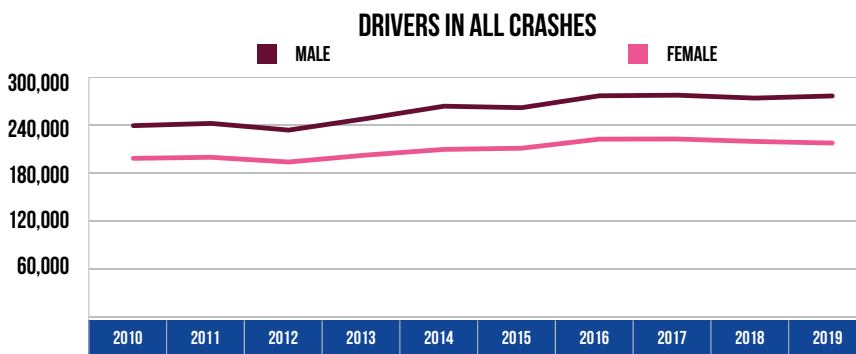
PROPERTY DAMAGE CRASHES PER 100 MILLION VEHICLE MILES TRAVELED



The property damage crash rate of 253.4 in 2019 was a 7.8 percent increase from 2010.

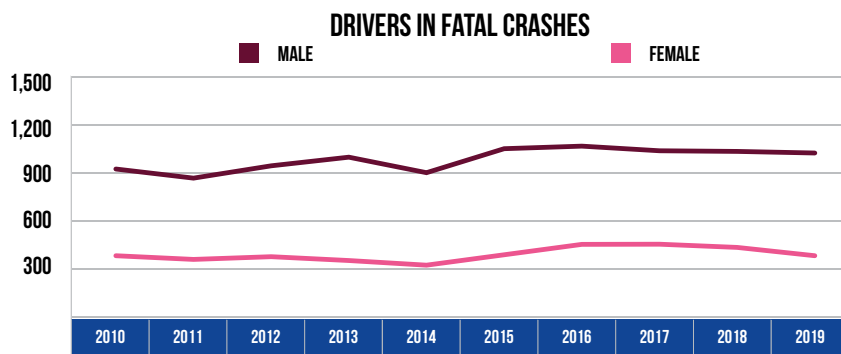
10 YEAR TRENDS-STATEWIDE (CONTINUED)

DRIVERS IN ALL CRASHES		
Year	Male	Female
2010	238,048	197,183
2011	240,850	198,488
2012	232,475	192,605
2013	246,908	201,264
2014	262,359	208,359
2015	260,508	209,843
2016	275,382	221,200
2017	276,112	221,365
2018	272,480	218,294
2019	275,180	216,274



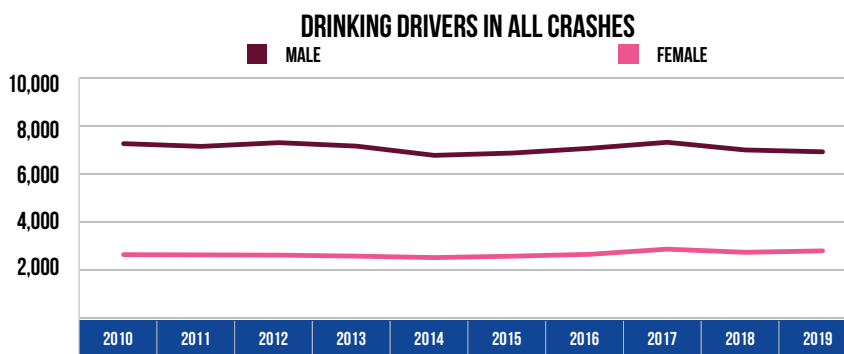
Male drivers accounted for 56.0 percent of all drivers in crashes during 2019, which was up slightly from 54.7 percent in 2010. Female drivers accounted for 44.0 percent of all drivers in crashes during 2019, which was down slightly from 45.3 percent in 2010.

DRIVERS IN FATAL CRASHES		
Year	Male	Female
2010	916	374
2011	859	351
2012	936	368
2013	990	344
2014	893	315
2015	1,043	380
2016	1,059	445
2017	1,030	446
2018	1,026	426
2019	1,016	374



Male drivers made up 73.1 percent of all drivers in fatal crashes in 2019, which was up from 71.0 percent in 2010. Female drivers made up 26.9 percent of all drivers in fatal crashes in 2019, which was down from 29.0 percent in 2010.

DRINKING DRIVERS IN ALL CRASHES		
Year	Male	Female
2010	7,209	2,584
2011	7,094	2,574
2012	7,250	2,563
2013	7,105	2,522
2014	6,721	2,461
2015	6,816	2,519
2016	7,014	2,597
2017	7,266	2,813
2018	6,946	2,681
2019	6,869	2,740

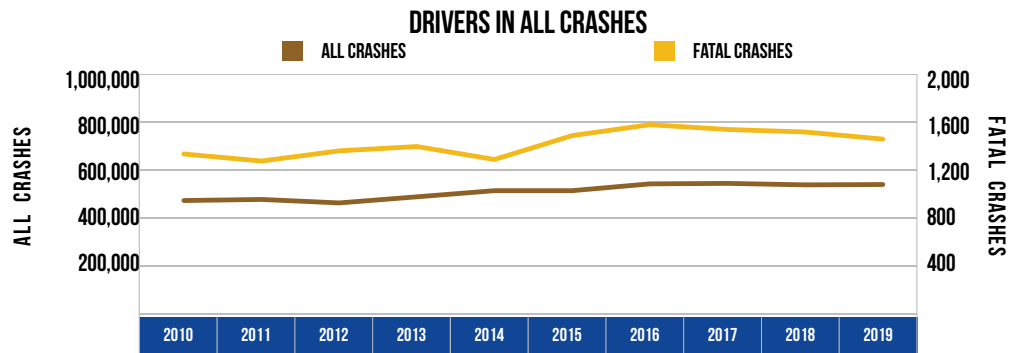


In 2019, males represented 78.3 percent of all drinking drivers, which was up from 73.6 percent in 2010. Females represented 21.7 percent of all drinking drivers in 2019, which was down from 26.4 percent in 2010.

Note: 44,267 drivers in all crashes, 60 drivers in fatal crashes, and one drinking driver were coded as unknown gender in 2019 and are not included in the tables.

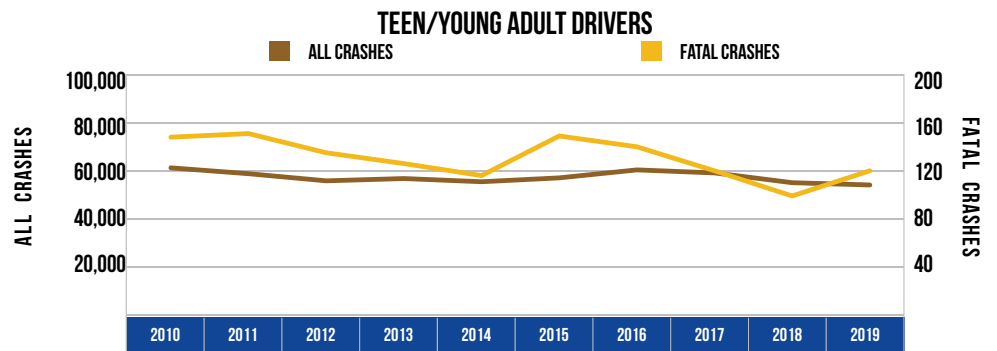
10 YEAR TRENDS-STATEWIDE (CONTINUED)

DRIVERS IN ALL CRASHES		
Year	All Crashes	Fatal Crashes
2010	468,968	1,326
2011	473,501	1,267
2012	459,030	1,352
2013	484,446	1,388
2014	510,086	1,280
2015	510,074	1,479
2016	538,412	1,570
2017	540,387	1,530
2018	534,223	1,509
2019	535,721	1,450



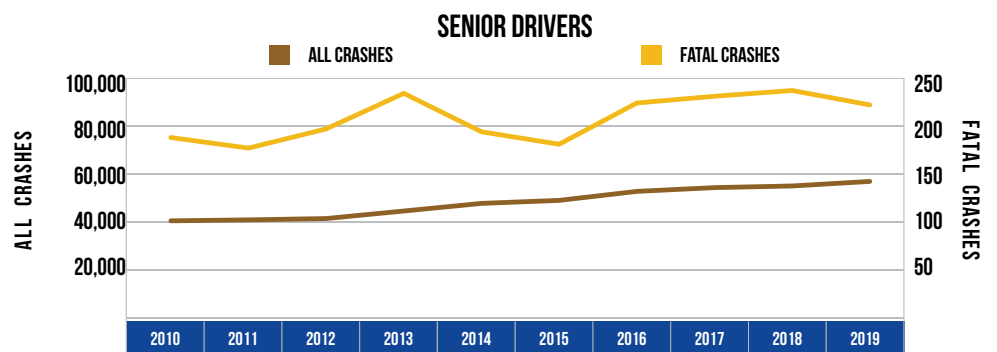
The number of drivers involved in all crashes increased 14.2 percent over the 10-year period. The number of drivers involved in fatal crashes increased 9.4 percent over the 10-year period.

TEEN/YOUNG ADULT DRIVERS (AGE 16-20)		
Year	All Crashes	Fatal Crashes
2010	60,721	147
2011	58,279	150
2012	55,307	134
2013	56,264	125
2014	54,935	115
2015	56,544	148
2016	59,865	139
2017	58,607	119
2018	54,530	98
2019	53,586	119



Teen/young adult drivers (age 16-20) represented 6.3 percent of the licensed drivers in 2019. The number of teen/young adult drivers in all crashes has decreased by 11.8 percent since 2010. Their involvement in fatal crashes has decreased 19.0 percent during the same time period.

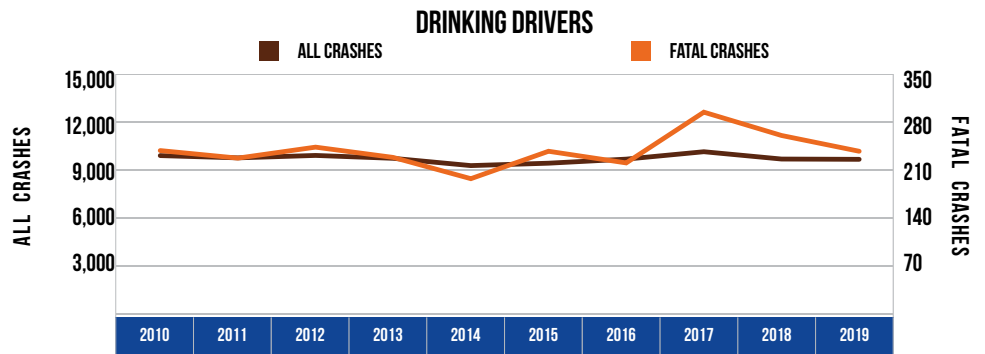
SENIOR DRIVERS (AGE 65 & OVER)		
Year	All Crashes	Fatal Crashes
2010	40,096	187
2011	40,495	176
2012	41,047	196
2013	44,183	233
2014	47,356	193
2015	48,615	180
2016	52,362	223
2017	53,934	230
2018	54,621	236
2019	56,515	221



Senior drivers (age 65 and over) represented 21.8 percent of the licensed drivers in 2019. The number of drivers age 65 and over in all crashes has increased 40.9 percent since 2010. Senior driver involvement in fatal crashes increased 18.2 percent during the same time period.

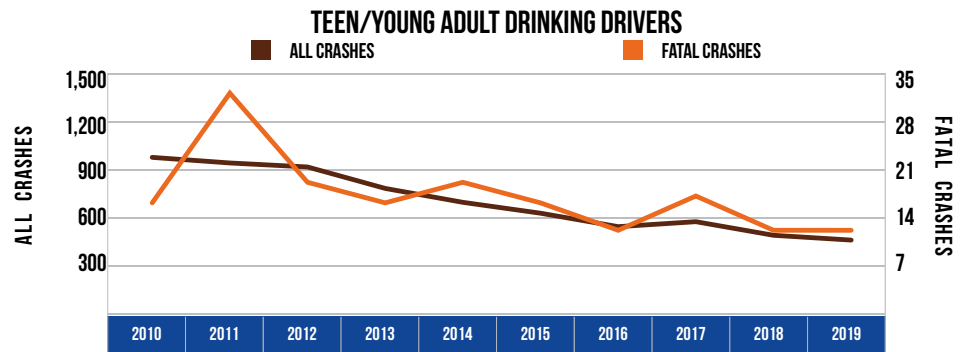
10 YEAR TRENDS-STATEWIDE (CONTINUED)

DRINKING DRIVERS		
Year	All Crashes	Fatal Crashes
2010	9,843	237
2011	9,701	226
2012	9,853	242
2013	9,673	227
2014	9,218	196
2015	9,368	236
2016	9,623	219
2017	10,085	293
2018	9,628	259
2019	9,610	236



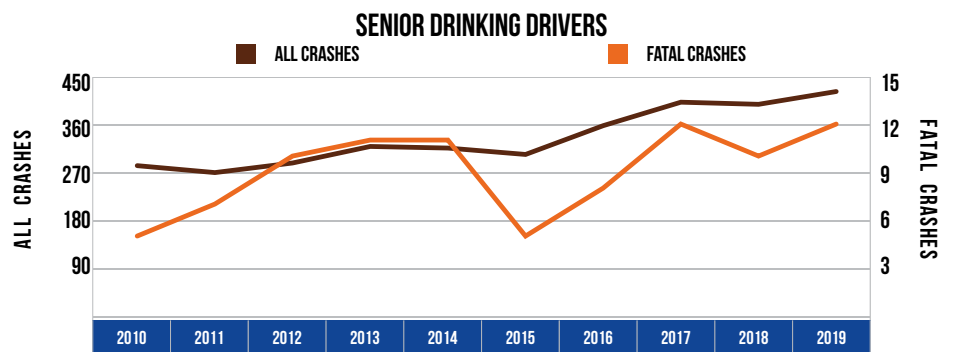
Drinking driver involvement in all crashes decreased by 2.4 percent from 2010. Drinking driver involvement in fatal crashes decreased by 0.4 percent from 2010.

TEEN/YOUNG ADULT DRINKING DRIVERS (AGE 16-20)		
Year	All Crashes	Fatal Crashes
2010	970	16
2011	935	32
2012	910	19
2013	776	16
2014	689	19
2015	621	16
2016	537	12
2017	568	17
2018	483	12
2019	453	12



The number of teen/young adult drinking drivers (age 16-20) in all crashes decreased by 53.3 percent, and their involvement in fatal crashes decreased by 25.0 percent from 2010.

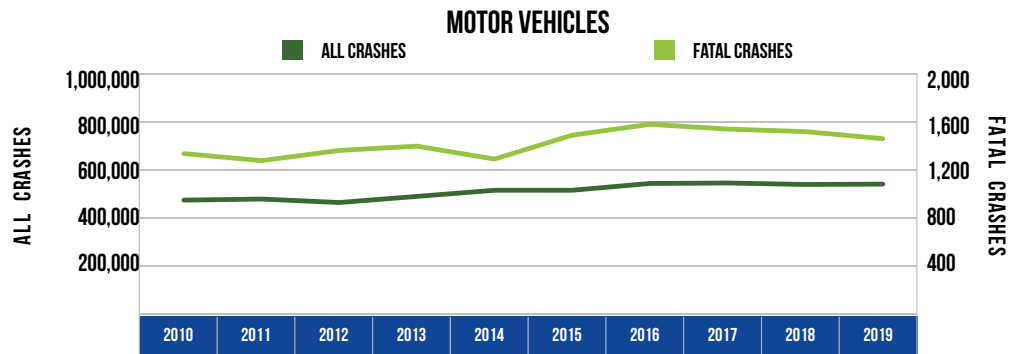
SENIOR DRINKING DRIVERS (AGE 65 & OVER)		
Year	All Crashes	Fatal Crashes
2010	282	5
2011	269	7
2012	287	10
2013	318	11
2014	315	11
2015	303	5
2016	357	8
2017	401	12
2018	397	10
2019	421	12



The number of senior drinking drivers (age 65 and over) in all crashes increased by 49.3 percent from 2010. Their involvement in fatal crashes increased by 140.0 percent from 2010.

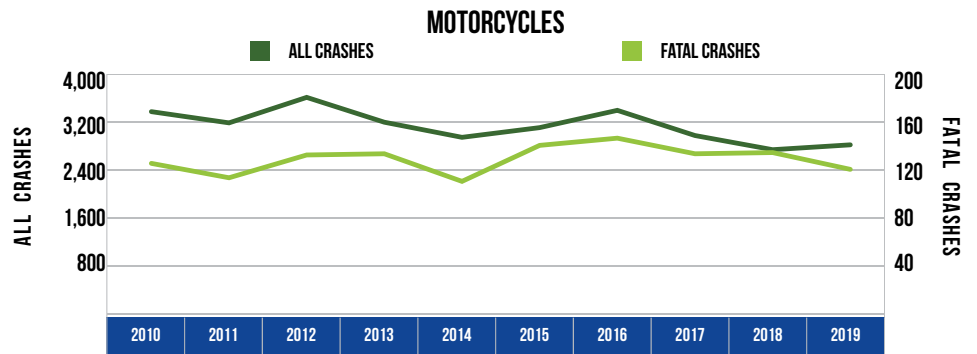
10 YEAR TRENDS-STATEWIDE (CONTINUED)

MOTOR VEHICLES		
Year	All Crashes	Fatal Crashes
2010	468,968	1,326
2011	473,501	1,267
2012	459,030	1,352
2013	484,446	1,388
2014	510,086	1,280
2015	510,074	1,479
2016	538,412	1,570
2017	540,387	1,530
2018	534,223	1,509
2019	535,721	1,450



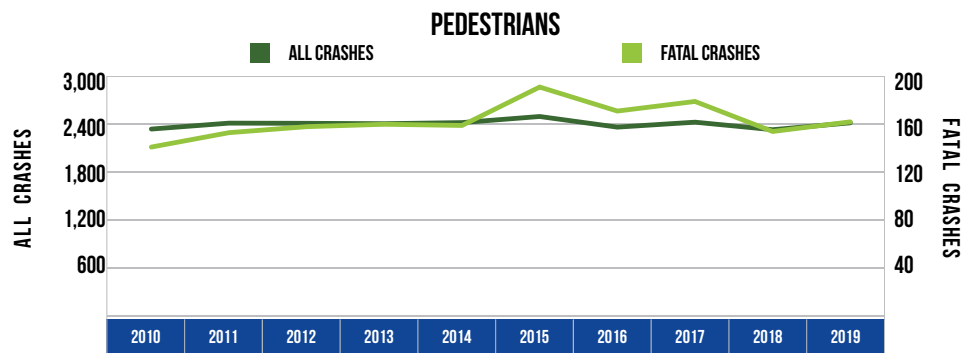
There were 535,721 motor vehicles involved in all crashes in 2019, up 14.2 percent from 2010. There were 1,450 motor vehicles involved in fatal crashes in 2019, up 9.4 percent from 2010.

MOTORCYCLES		
Year	All Crashes	Fatal Crashes
2010	3,362	125
2011	3,175	113
2012	3,600	132
2013	3,186	133
2014	2,934	110
2015	3,096	140
2016	3,384	146
2017	2,964	133
2018	2,728	134
2019	2,809	120



There were 2,809 motorcycles involved in crashes in 2019, a 16.4 percent decrease from 2010. There were 120 motorcycles involved in fatal crashes in 2019, down 4.0 percent from 2010.

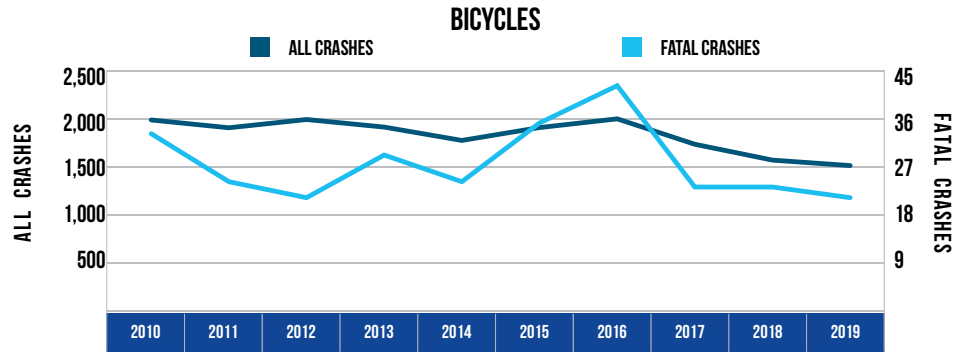
PEDESTRIANS		
Year	All Crashes	Fatal Crashes
2010	2,325	140
2011	2,399	152
2012	2,397	157
2013	2,392	159
2014	2,406	158
2015	2,482	190
2016	2,349	170
2017	2,411	178
2018	2,317	153
2019	2,403	161



There were 2,403 pedestrians involved in crashes in 2019, up 3.4 percent from 2010. There were 161 pedestrians involved in fatal crashes in 2019, up 15.0 percent from 2010.

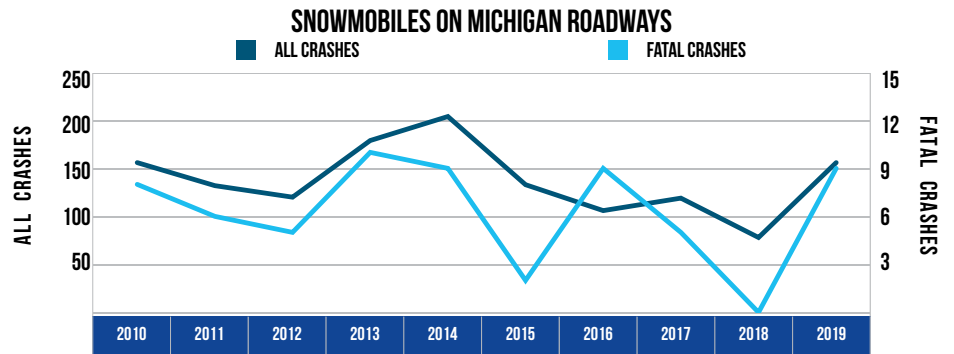
10 YEAR TRENDS-STATEWIDE (CONTINUED)

BICYCLES		
Year	All Crashes	Fatal Crashes
2010	1,976	33
2011	1,895	24
2012	1,981	21
2013	1,902	29
2014	1,763	24
2015	1,897	35
2016	1,988	42
2017	1,723	23
2018	1,558	23
2019	1,501	21



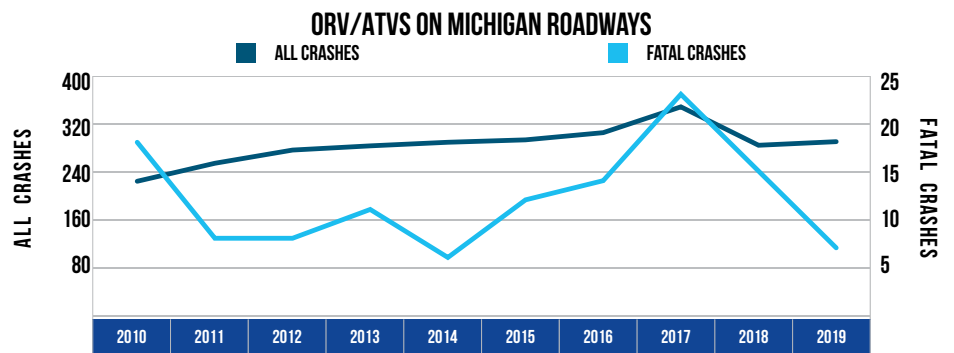
There were 1,501 bicycles involved in crashes in 2019, down 24.0 percent from 2010. There were 21 bicycles involved in fatal crashes in 2019, down 36.4 percent from 2010.

SNOWMOBILES ON MICHIGAN ROADWAYS		
Year	All Crashes	Fatal Crashes
2010	156	8
2011	132	6
2012	120	5
2013	179	10
2014	204	9
2015	133	2
2016	106	9
2017	119	5
2018	78	0
2019	156	9



There were 156 snowmobiles in crashes on roadways in 2019, the same number as in 2010. There were nine snowmobiles in fatal crashes, up 12.5 percent from 2010.

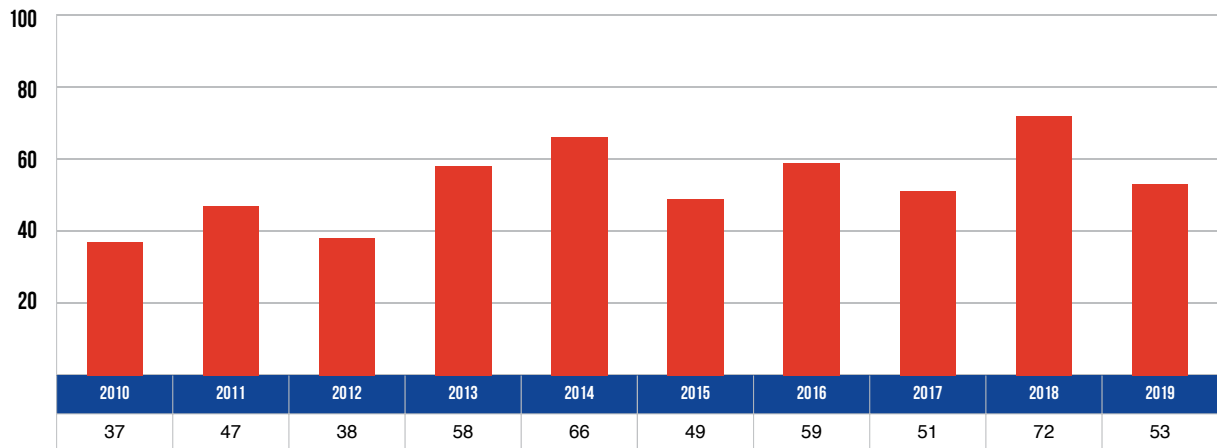
ORV/ATVS ON MICHIGAN ROADWAYS		
Year	All Crashes	Fatal Crashes
2010	223	18
2011	253	8
2012	275	8
2013	282	11
2014	288	6
2015	292	12
2016	304	14
2017	347	23
2018	283	15
2019	289	7



There were 289 ORV/ATVs in crashes on roadways in 2019, up 29.6 percent from 2010. There were seven ORV/ATVs in fatal crashes, down 61.1 percent from 2010.

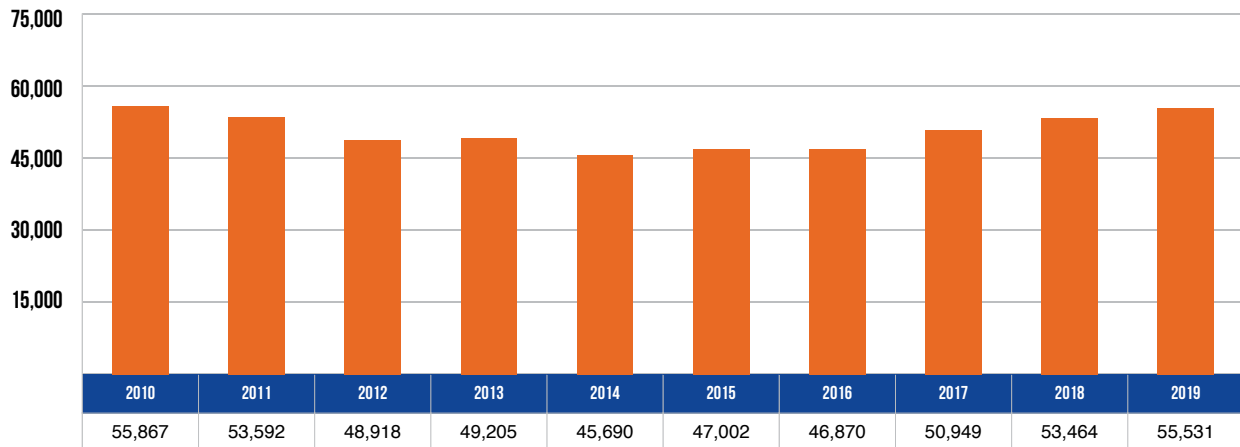
10 YEAR TRENDS-STATEWIDE (CONTINUED)

VEHICLE-TRAIN CRASHES



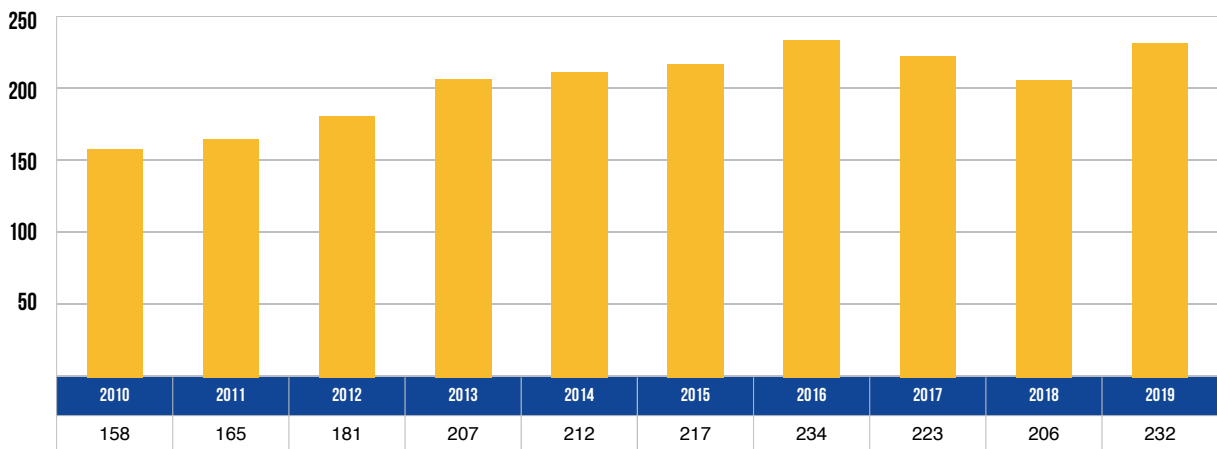
There were 53 vehicle-train crashes in 2019--an increase of 43.2 percent in the 10-year period.

VEHICLE-DEER CRASHES



There were 55,531 vehicle-deer crashes in 2019--a decrease of 0.6 percent in the 10-year period.

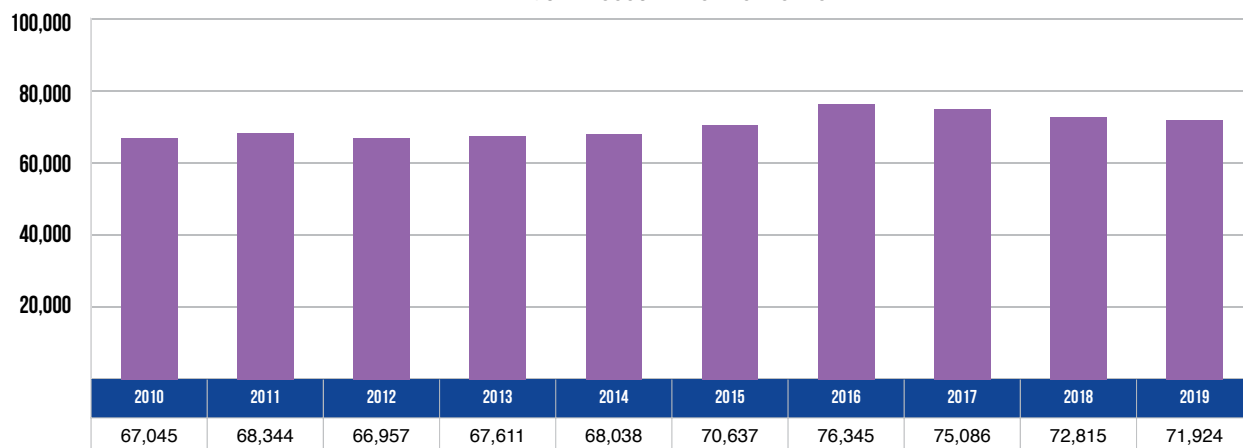
FARM EQUIPMENT CRASHES



There were 232 farm equipment crashes in 2019--an increase of 46.8 percent from 2010.

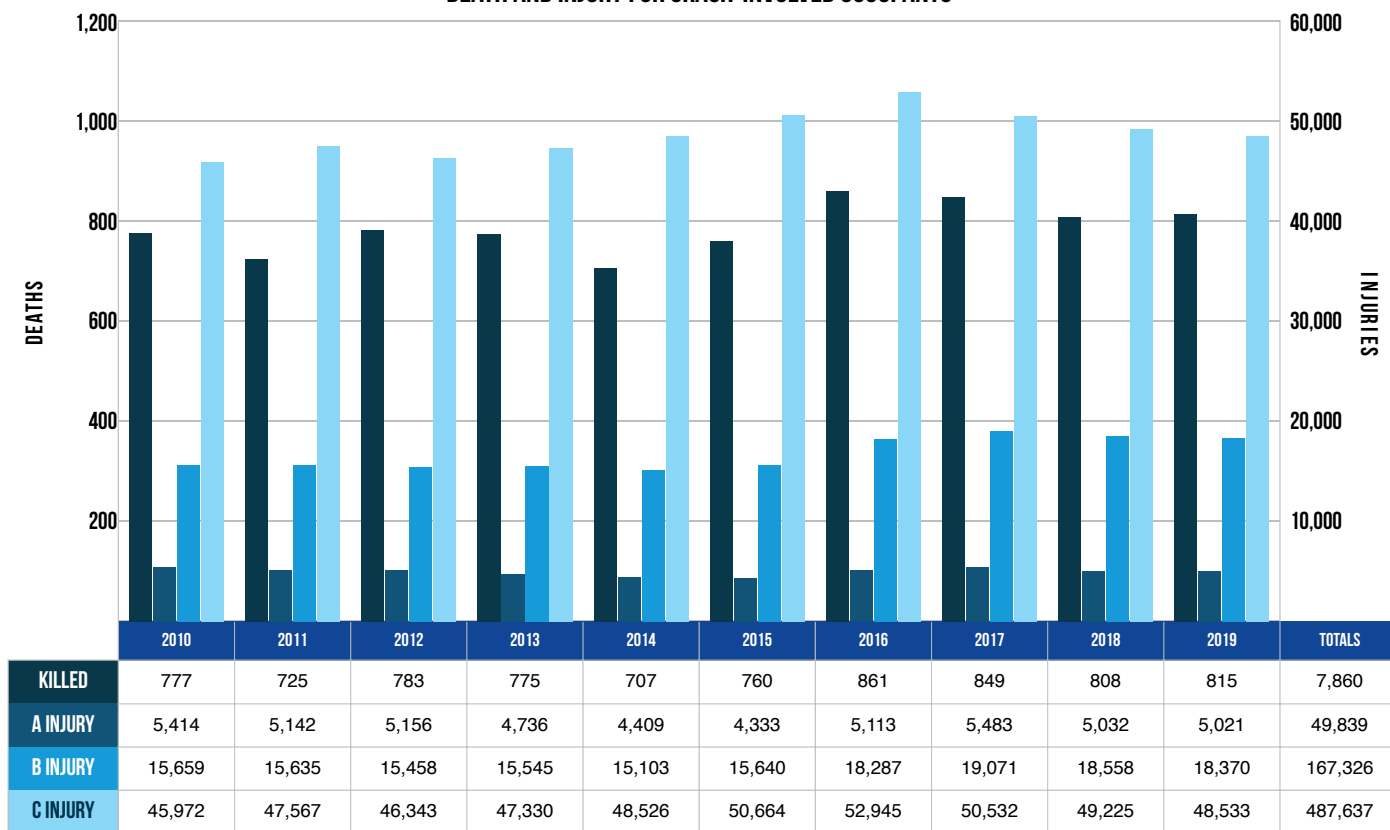
10 YEAR TRENDS-STATEWIDE (CONTINUED)

INJURED OCCUPANTS IN CRASHES



There were 71,924 occupants injured in crashes in 2019--an increase of 7.3 percent from 2010.

DEATH AND INJURY FOR CRASH-INVOLVED OCCUPANTS



Over the period from 2010 to 2019, occupant deaths increased 4.9 percent, A injuries decreased 7.3 percent, B injuries increased 17.3 percent, and C injuries increased 5.6 percent.

Note: These figures contain the number of occupants recorded as injured by the police officer on the UD-10.

10 YEAR TRENDS-STATEWIDE (CONTINUED)

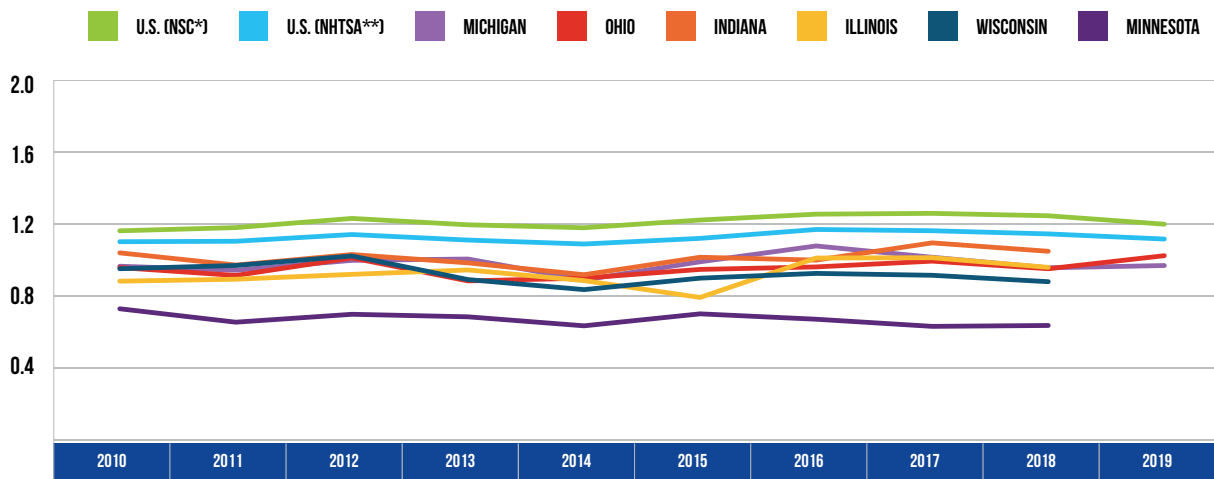
AVERAGE AGE OF DRIVERS IN CRASHES 2010 - 2019



Over the 10-year period, reflecting the demographic trend of increasing age in the general population, the average age of drivers involved in all crashes has increased three percent. The age of drivers involved in fatal crashes has increased 24 percent. The average age of drinking drivers in crashes has decreased 13 percent. The average age of drinking drivers in fatal crashes has increased 4 percent.

10 YEAR TRENDS-STATEWIDE (CONTINUED)

FATALITIES PER 100 MILLION VMT 2010 - 2019



YEAR	U.S. (NSC*)	U.S. (NHTSA**)	MICHIGAN	OHIO	INDIANA	ILLINOIS	WISCONSIN	MINNESOTA
2010	1.2	1.1	1.0	1.0	1.0	0.9	0.9	0.7
2011	1.2	1.1	0.9	0.9	1.0	0.9	1.0	0.6
2012	1.2	1.1	1.0	1.0	1.0	0.9	1.0	0.7
2013	1.2	1.1	1.0	0.9	1.0	0.9	0.9	0.7
2014	1.2	1.1	0.9	0.9	0.9	0.9	0.8	0.6
2015	1.2	1.1	1.0	0.9	1.0	0.8	0.9	0.7
2016	1.2	1.2	1.1	1.0	1.0	1.0	0.9	0.7
2017	1.3	1.2	1.0	1.0	1.1	1.0	0.9	0.6
2018	1.2	1.1	1.0	0.9	1.0	1.0	0.9	0.6
2019	1.2	1.1	1.0	1.0	-	-	-	-

* National Safety Council (NSC) reports traffic and nontraffic deaths within a year of the crash.

**National Highway Traffic Safety Administration (NHTSA) reports only traffic deaths that occur within 30 days of the crash.

U.S. data for this table and tables on the following page were provided by the National Safety Council [3], the National Highway Traffic Safety Administration [4], and the Federal Highway Administration [5]. State data for this table and tables on the following page were provided by Ohio [6], Indiana [7], Illinois [8], Wisconsin [9], and Minnesota [10].

10 YEAR TRENDS-STATEWIDE (CONTINUED)

YEAR	U.S. (NSC) FATALITIES	U.S. (NHTSA) FATALITIES	MICHIGAN FATALITIES	OHIO FATALITIES	INDIANA FATALITIES	ILLINOIS FATALITIES	WISCONSIN FATALITIES	MINNESOTA FATALITIES
2010	34,700	32,885	937	1,081	754	927	562	411
2011	34,600	32,367	889	1,015	749	918	565	368
2012	36,200	33,561	936	1,122	779	956	601	395
2013	35,369	32,850	951	990	777	991	527	387
2014	35,400	32,675	876	1,008	743	924	498	361
2015	38,300	35,092	963	1,110	829	829	555	411
2016	40,200	37,461	1,064	1,133	821	1,078	588	392
2017	40,231	37,133	1,028	1,179	911	1,090	594	358
2018	40,000	36,750	974	1,068	873	1,031	576	381
2019	38,800	36,120	985	1,155	-	-	-	-

YEAR	U.S. (FHWA) VMT	MICHIGAN VMT	OHIO VMT	INDIANA VMT	ILLINOIS VMT	WISCONSIN VMT	MINNESOTA VMT
2010	3,000	97.6	113.5	72.9	105.7	59.4	56.8
2011	2,946	94.8	111.7	77.5	103.4	58.6	56.7
2012	2,954	94.3	111.5	76.0	104.5	59.1	57.0
2013	2,972	95.1	112.7	79.4	105.5	59.5	57.0
2014	3,016	99.1	112.8	81.4	105.0	60.0	57.4
2015	3,148	97.8	117.8	82.1	105.4	62.1	59.1
2016	3,218	99.2	118.5	82.6	107.2	63.9	58.9
2017	3,209	101.8	119.3	83.6	108.2	65.3	57.2
2018	3,225	102.4	112.9	83.7	108.1	65.9	60.4
2019	3,251	102.2	113.4	84.3	107.6	-	-

VMT described in billions of miles