



2019

MTCF
Michigan Traffic
Crash Facts

Michigan Traffic Crash Facts

Reporting Criteria

Please pay particular attention to the wording when interpreting the three levels of data gathered for this report.

Crash

The Crash Level analyzes data related to crash events and returns one result per crash.

Examples: Time, weather, and location.

Units

The Units Level analyzes the experience of the units in the crash and returns one result per vehicle, driver, pedestrian, bicyclist, or train.

Examples: Vehicle type, driver condition, and unit events.

People

The People Level analyzes the experience of the people involved in the crash and returns one result per occupant/person/party.

Examples: Age, injury severity, and seat belt or helmet use.

KABCO Injury Indicator:

K = Killed

A = Suspected Serious Injury

B = Suspected Minor Injury

C = Possible Injury

O = No Injury

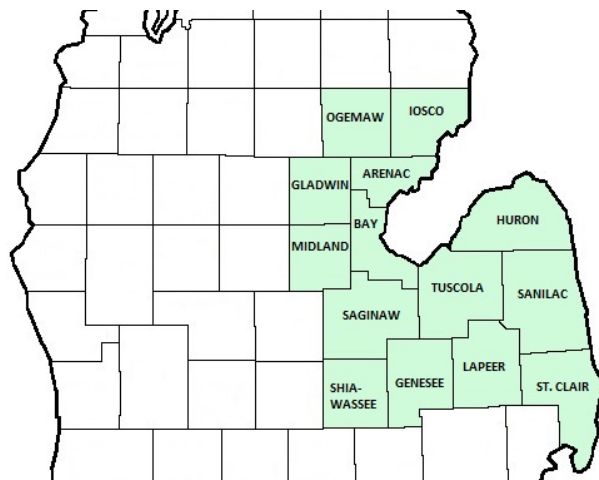
Property Damage Only (PDO)



Michigan State Police (MSP) District 3 - Thumb & Tri-Cities

2019 Traffic Crash Data & 2015-2019 5-Year Trends

Beginning in 2011, District 3 is comprised of Arenac, Bay, Genesee, Gladwin, Huron, Iosco, Lapeer, Midland, Ogemaw, Saginaw, St. Clair, Sanilac, Shiawassee, and Tuscola counties. Trend tables for this report are based on those counties.



Sources:

The crashes in this report occurred on public roadways in Michigan and resulted in injuries, fatalities, or property damage (with \$1,000 as a reporting threshold). The information was gathered from Michigan Traffic Crash Report Forms (UD-10) submitted by local police departments, sheriff's offices, and the Michigan State Police. Other related information was obtained from the departments of Transportation, State, and Community Health.

This page left intentionally blank

MSP District 3 - Thumb & Tri-Cities

- There were 39,491 crashes in District 3 during 2019. [Page 1]
- A total of 152 fatalities resulted from 139 fatal crashes in 2019 in District 3. [Page 1]
- There were 9,325 injuries and 6,688 injury crashes. [Page 1]
- There were 32,664 property damage only crashes (no fatalities or injuries). [Page 1]
- November had the highest number of crashes (4,966). [Pages 1-2]
- August had the highest number of fatal crashes (18) and fatalities (21). [Pages 1-2]
- August and October had the highest number of injury crashes (624) while August had the highest number of injuries (911). [Page 1]
- November had the highest number of property damage only crashes (4,370). [Page 1]
- Of all vehicles involved in fatal crashes, 16 (7.3%) were motorcycles. [Page 1]
- Friday was the day of the week with the highest number of crashes (6,289) and Thursday had the highest number of fatal crashes (28). [Pages 2-3]
- The 3:00 PM - 5:59 PM time period had the highest number of crashes (7,469). This holds true for every year between 2015 and 2019. The 3:00 PM - 5:59 PM time period had the highest number of fatal crashes (33). [Pages 5-6]
- During the period from 2015 to 2019, the highest number of deer crashes occurred in 2019 (12,405). The 6:00 PM - 8:59 PM time period consistently had the highest number of deer-involved crashes during the five-year period. There were 4 fatal crashes involving deer in 2019. [Pages 7-8]
- Genesee County (27.0%) had the highest number of crashes in District 3 in 2019, followed by Saginaw County (14.1%), and St. Clair County (9.4%). [Page 8]
- Genesee County (34.9%) had the highest number of fatalities in District 3 in 2019, followed by St. Clair County (14.5%), and Saginaw County (11.8%). [Page 8]
- The highest number of drivers in crashes (59,738) occurred during 2019 and the highest number of drivers coded drinking in crashes (1,376) occurred during 2017 within the five year period between 2015 and 2019. [Page 9]
- A total of 1,340 crashes involved alcohol in 2019. [Page 11]
- Alcohol-involved fatal crashes were the highest in 2015 during the five-year period from 2015 to 2019 at 47. [Page 11]
- A total of 338 crashes, 33 fatal crashes, and 44 suspected serious injury crashes involved drugs in 2019. [Page 12]
- There were 53,929 drivers wearing seatbelts and 552 drivers not wearing seatbelts in crashes in 2019. Of the 552 drivers not wearing seat belts, 28 (5.1%) were killed and 232 (42.0%) were injured. [Pages 15-17]
- The most common hazardous action coded for drivers in 2019 in all crashes was unable to stop in assured clear distance (6,117), while the most common hazardous actions coded for drivers in fatal crashes were unknown and speed too fast (23). [Page 18]

MSP District 3 - Thumb & Tri-Cities (continued)

District 3 Experience

In 2019:

There were 59,738 drivers involved in 39,491 motor vehicle crashes in MSP District 3. Of those crashes, 139 were classified as fatal, resulting in 152 fatalities. An additional 9,325 persons were injured.

District 3 experienced the highest number of motor vehicle crashes (4,966) in November, the highest number of fatal crashes (18) and the highest number of persons killed (21) in August.

Michigan driver statistics indicate 6.2 percent of licensed drivers in District 3 were age 16-20, and 11.0 percent of drivers in crashes were also in that age group.

2019 - Crashes and Injuries by Month

Month	Crashes				Persons	
	Total	Fatal	Injury	Property Damage Only (PDO)	Fatalities	Injuries
January	3,851	11	599	3,241	11	803
February	3,244	11	506	2,727	11	692
March	2,663	11	434	2,218	11	605
April	2,544	7	470	2,067	7	659
May	2,891	10	557	2,324	10	772
June	3,094	7	575	2,512	7	827
July	2,839	16	622	2,201	18	899
August	2,802	18	624	2,160	21	911
September	2,857	12	588	2,257	13	812
October	4,155	11	624	3,520	12	848
November	4,966	11	585	4,370	15	813
December	3,585	14	504	3,067	16	684
Total	39,491	139	6,688	32,664	152	9,325

2019 - Driver Statistics

Age Group	District 3			Driver Rates	
	2019 Population	Licensed Drivers	Drivers in Crashes	Per 10k Population	Per 10k Licensed
0 - 15	240,902	7,089	100	4.2	141.1
16 - 20	78,151	61,258	6,550	838.1	1,069.2
21 - 24	61,202	57,248	5,162	843.4	901.7
25 - 64	668,189	620,856	37,027	554.1	596.4
65 +	259,899	237,066	7,381	284.0	311.3
Unknown	0	0	3,518	--	--
Total	1,308,343	983,517	59,738	456.6	607.4

2019 - Vehicles in Crashes

Vehicle Type	Motor Vehicles		Fatal Crashes		Injury Crashes	PDO Crashes
	Number of Vehicles	% of Total	Number	% of Total	Number	Number
Passenger car, SUV, van	45,926	76.9	151	68.6	8,924	36,851
Motor home	105	0.2	0	0.0	16	89
Pickup truck	10,278	17.2	36	16.4	1,829	8,413
Small truck under 10,000 lbs. GVWR	271	0.5	0	0.0	52	219
Motorcycle	409	0.7	16	7.3	305	88
Moped / goped	35	0.1	0	0.0	29	6
Go-cart / golf cart	9	0.0	1	0.5	3	5
Snowmobile	3	0.0	0	0.0	3	0
Off-Road Vehicle - ORV / All-Terrain Vehicle - ATV	52	0.1	0	0.0	42	10
Other	245	0.4	1	0.5	47	197
Truck/bus over 10,000 lbs.	1,593	2.7	12	5.5	325	1,256
Unknown	812	1.4	3	1.4	75	734
Total	59,738	100.0	220	100.0	11,650	47,868

5-Year Trend - Crashes by Month

Month	2015		2016		2017		2018		2019	
	Total Crashes	Fatal Crashes	Total Crashes	Fatal Crashes	Total Crashes	Fatal Crashes	Total Crashes	Fatal Crashes	Total Crashes	Fatal Crashes
January	3,960	5	3,634	11	3,305	12	3,988	8	3,851	11
February	2,908	3	3,444	9	2,308	5	3,228	14	3,244	11
March	2,537	8	2,754	7	3,085	12	3,130	9	2,663	11
April	2,358	8	2,659	5	2,496	8	2,778	14	2,544	7
May	2,760	13	2,571	9	2,831	10	2,673	13	2,891	10
June	2,921	11	2,833	12	3,003	16	2,949	11	3,094	7
July	2,608	22	2,741	13	2,801	20	2,624	9	2,839	16
August	2,403	9	2,702	12	2,612	14	2,587	23	2,802	18
September	2,745	13	2,922	17	2,921	11	2,654	17	2,857	12
October	3,818	17	3,573	18	4,070	13	3,853	15	4,155	11
November	4,454	15	4,114	12	4,019	16	4,588	14	4,966	11
December	3,359	11	4,022	14	5,025	13	3,309	6	3,585	14
Total	36,831	135	37,969	139	38,476	150	38,361	153	39,491	139

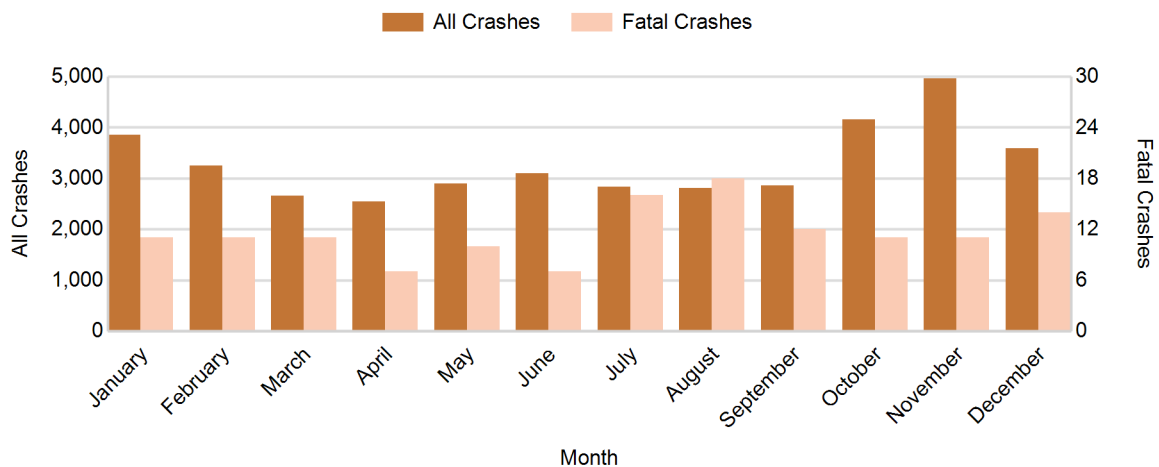
Note: † Indicates that the highest number of total crashes reported in the 5-year period occurred in the same month

5-Year Trend - Crashes by Day of Week

Day	2015		2016		2017		2018		2019	
	Total Crashes	Fatal Crashes	Total Crashes	Fatal Crashes	Total Crashes	Fatal Crashes	Total Crashes	Fatal Crashes	Total Crashes	Fatal Crashes
Monday	5,263	14	5,410	17	5,530	21	5,730	16	5,940	15
Tuesday	5,586	20	5,662	11	5,813	23	5,753	21	5,882	17
Wednesday	5,562	15	6,011	19	5,663	17	5,704	23	6,218	21
Thursday	5,457	14	5,549	18	5,923	22	5,789	23	5,837	28
Friday	5,767 †	26	6,140 †	27	6,196 †	21	6,437 †	18	6,289 †	19
Saturday	5,127	27	4,897	26	5,191	21	4,882	23	5,056	20
Sunday	4,069	19	4,300	21	4,160	25	4,066	29	4,269	19
Total	36,831	135	37,969	139	38,476	150	38,361	153	39,491	139

Note: † Indicates that the highest number of total crashes reported in the 5-year period occurred on the same day of the week

2019 Crashes by Month

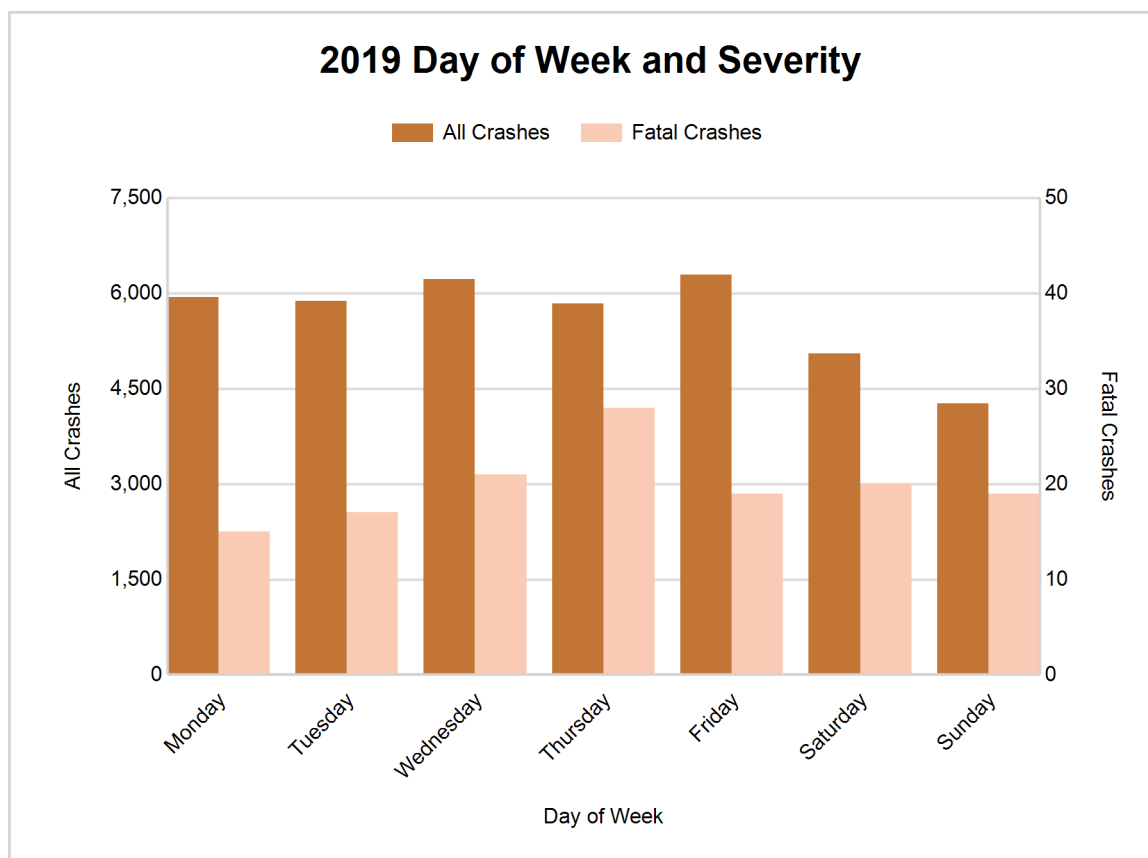


MSP District 3 - Thumb & Tri-Cities (continued)

2019 - Crashes by Day of Week

Day	All Crashes		Fatal Crashes		Injury Crashes			PDO Crashes
	Number	% of Total	Number	% of Fatal	A	B	C	Number
Monday	5,940	15.0	15	10.8	90	265	649	4,921
Tuesday	5,882	14.9	17	12.2	95	263	668	4,839
Wednesday	6,218	15.7	21	15.1	91	259	698	5,149
Thursday	5,837	14.8	28	20.1	90	264	589	4,866
Friday	6,289	15.9	19	13.7	110	278	634	5,248
Saturday	5,056	12.8	20	14.4	105	289	510	4,132
Sunday	4,269	10.8	19	13.7	103	248	390	3,509
Total	39,491	100.0	139	100.0	684	1,866	4,138	32,664

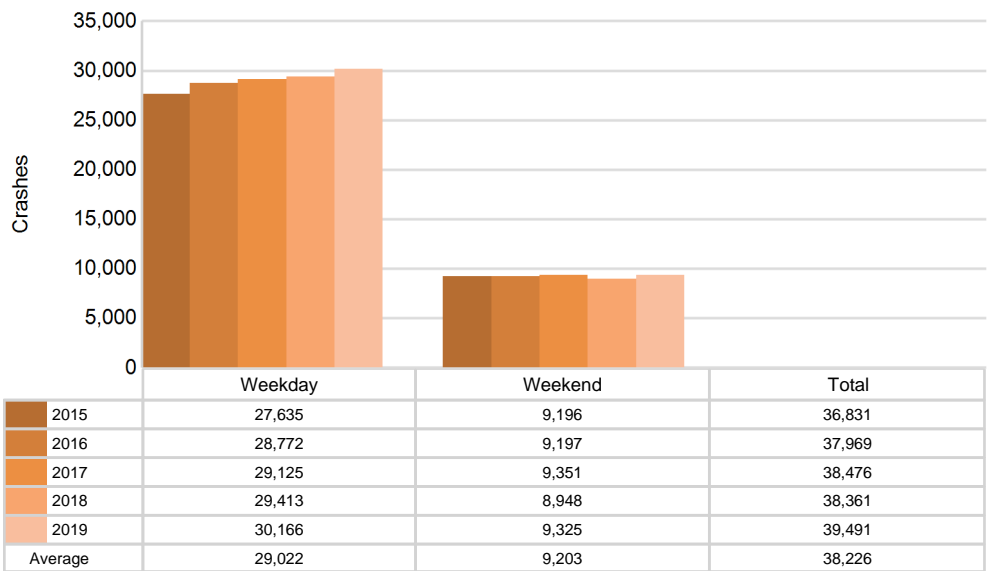
2019 Day of Week and Severity



5-Year Trend - Crashes by Weekday and Weekend

Portion of Week	2015		2016		2017		2018		2019	
	Total Crashes	Fatal Crashes	Total Crashes	Fatal Crashes	Total Crashes	Fatal Crashes	Total Crashes	Fatal Crashes	Total Crashes	Fatal Crashes
Weekday	27,635	89	28,772	92	29,125	104	29,413	101	30,166	100
Weekend	9,196	46	9,197	47	9,351	46	8,948	52	9,325	39
Total	36,831	135	37,969	139	38,476	150	38,361	153	39,491	139

5-Year Crash Trends by Weekday (Monday - Friday) and Weekend (Saturday & Sunday)

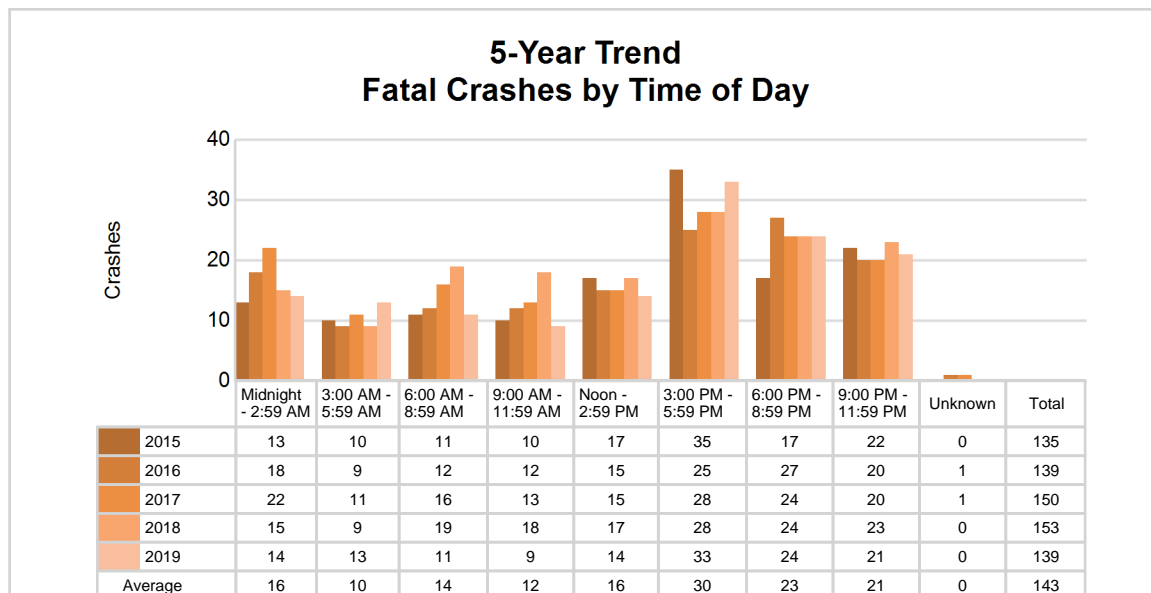
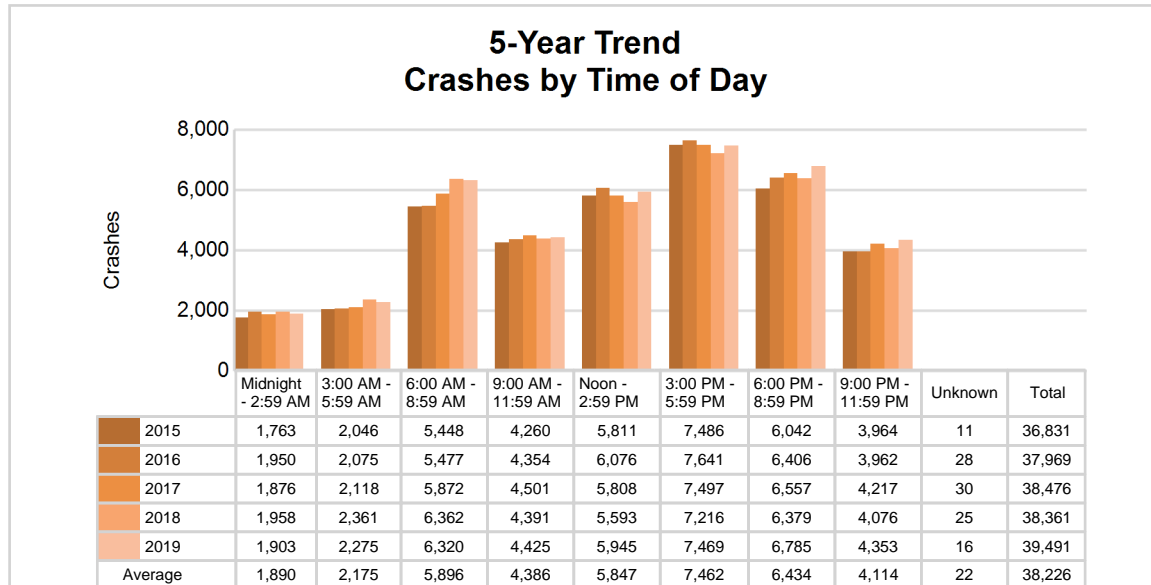


MSP District 3 - Thumb & Tri-Cities (continued)

5-Year Trend - Crashes by Time of Day

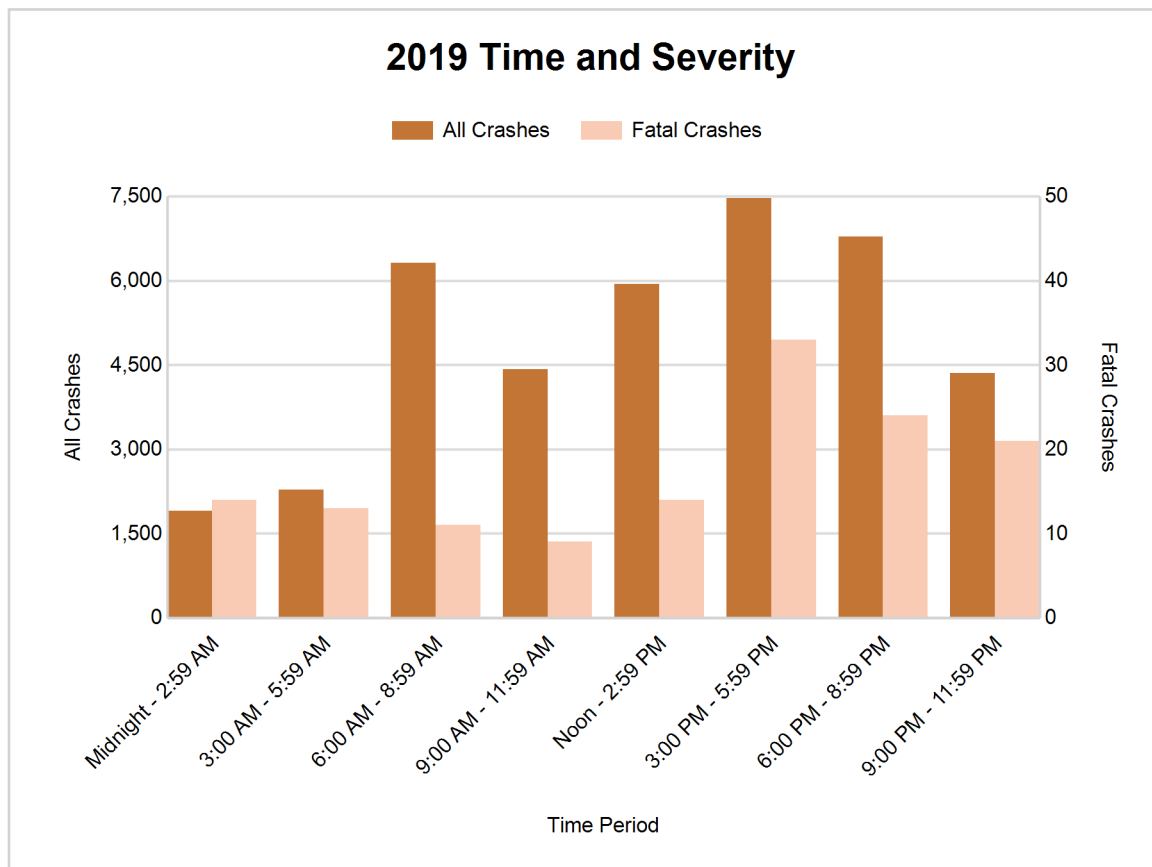
Time of Day	2015		2016		2017		2018		2019	
	Total Crashes	Fatal Crashes	Total Crashes	Fatal Crashes	Total Crashes	Fatal Crashes	Total Crashes	Fatal Crashes	Total Crashes	Fatal Crashes
Midnight - 2:59 AM	1,763	13	1,950	18	1,876	22	1,958	15	1,903	14
3:00 AM - 5:59 AM	2,046	10	2,075	9	2,118	11	2,361	9	2,275	13
6:00 AM - 8:59 AM	5,448	11	5,477	12	5,872	16	6,362	19	6,320	11
9:00 AM - 11:59 AM	4,260	10	4,354	12	4,501	13	4,391	18	4,425	9
Noon - 2:59 PM	5,811	17	6,076	15	5,808	15	5,593	17	5,945	14
3:00 PM - 5:59 PM	7,486 †	35	7,641 †	25	7,497 †	28	7,216 †	28	7,469 †	33
6:00 PM - 8:59 PM	6,042	17	6,406	27	6,557	24	6,379	24	6,785	24
9:00 PM - 11:59 PM	3,964	22	3,962	20	4,217	20	4,076	23	4,353	21
Unknown	11	0	28	1	30	1	25	0	16	0
Total	36,831	135	37,969	139	38,476	150	38,361	153	39,491	139

Note: † Indicates that the highest number of total crashes reported in the 5-year period occurred in the same time period



2019 - Time and Severity

Time of Day	All Crashes		Fatal Crashes		Injury Crashes			PDO Crashes
	Number	% of Total	Number	% of Fatal	A	B	C	Number
Midnight - 2:59 AM	1,903	4.8	14	10.1	53	97	157	1,582
3:00 AM - 5:59 AM	2,275	5.8	13	9.4	31	93	138	2,000
6:00 AM - 8:59 AM	6,320	16.0	11	7.9	81	187	507	5,534
9:00 AM - 11:59 AM	4,425	11.2	9	6.5	89	232	572	3,523
Noon - 2:59 PM	5,945	15.1	14	10.1	97	327	864	4,643
3:00 PM - 5:59 PM	7,469	18.9	33	23.7	144	446	1,018	5,828
6:00 PM - 8:59 PM	6,785	17.2	24	17.3	118	297	538	5,808
9:00 PM - 11:59 PM	4,353	11.0	21	15.1	71	185	343	3,733
Unknown	16	0.0	0	0.0	0	2	1	13
Total	39,491	100.0	139	100.0	684	1,866	4,138	32,664

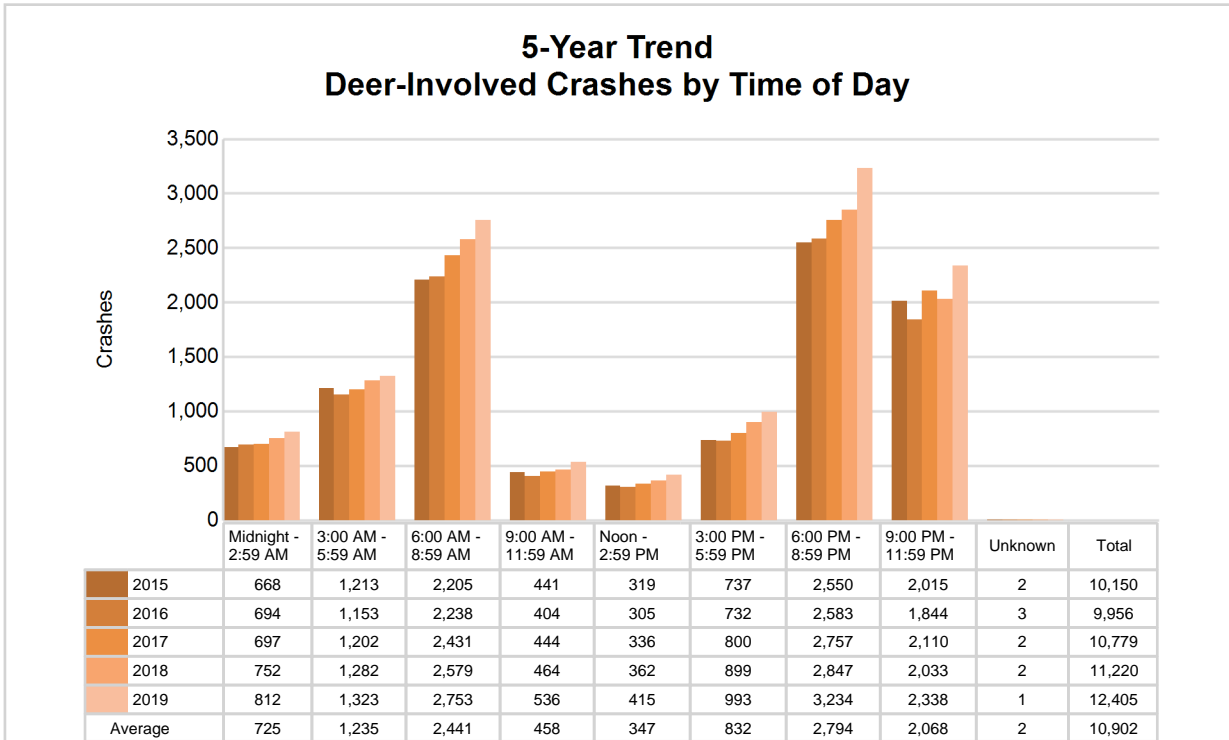


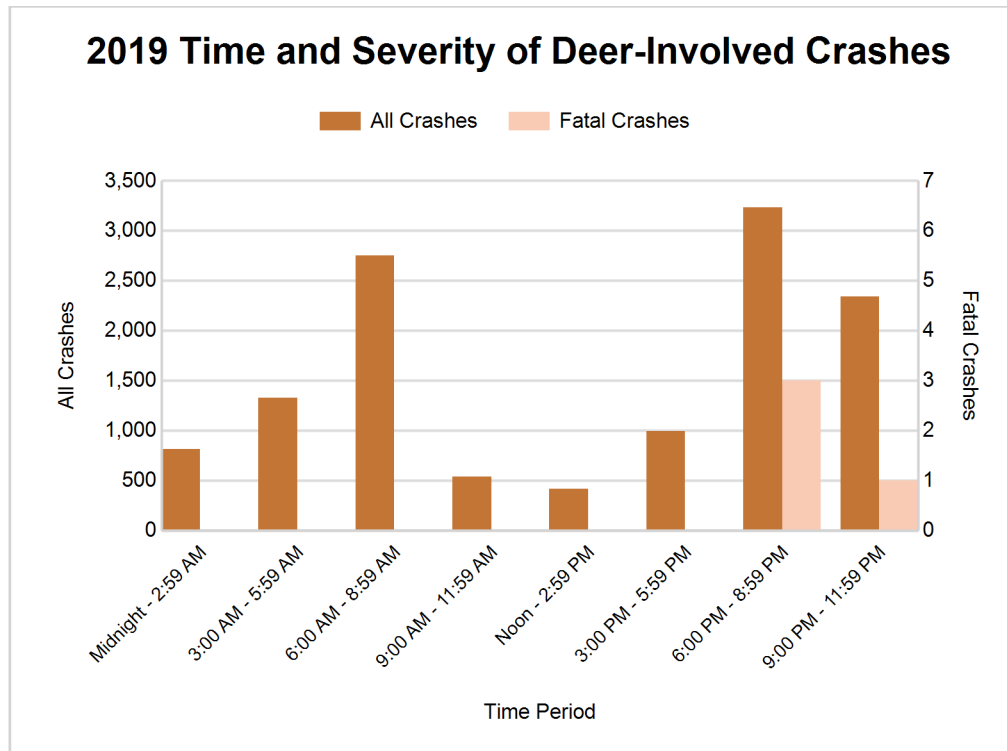
MSP District 3 - Thumb & Tri-Cities (continued)

5-Year Trend - Deer-Involved Crashes by Time of Day

Time of Day	2015		2016		2017		2018		2019	
	Total Crashes	Fatal Crashes	Total Crashes	Fatal Crashes	Total Crashes	Fatal Crashes	Total Crashes	Fatal Crashes	Total Crashes	Fatal Crashes
Midnight - 2:59 AM	668	0	694	0	697	2	752	0	812	0
3:00 AM - 5:59 AM	1,213	0	1,153	0	1,202	0	1,282	0	1,323	0
6:00 AM - 8:59 AM	2,205	1	2,238	1	2,431	0	2,579	0	2,753	0
9:00 AM - 11:59 AM	441	0	404	0	444	0	464	0	536	0
Noon - 2:59 PM	319	0	305	0	336	0	362	0	415	0
3:00 PM - 5:59 PM	737	0	732	0	800	1	899	1	993	0
6:00 PM - 8:59 PM	2,550 †	0	2,583 †	0	2,757 †	1	2,847 †	2	3,234 †	3
9:00 PM - 11:59 PM	2,015	0	1,844	3	2,110	0	2,033	0	2,338	1
Unknown	2	0	3	0	2	0	2	0	1	0
Total	10,150	1	9,956	4	10,779	4	11,220	3	12,405	4

Note: † Indicates that the highest number of total crashes reported in the 5-year period occurred in the same time period





2019 - Reported Motor Vehicle Crashes by County

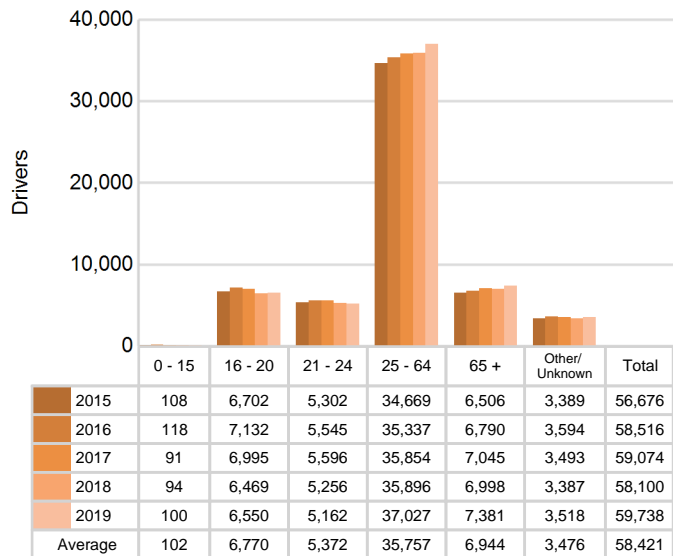
County	Crashes											Persons	
	Total	Fatal	Injury	Property Damage	Inter-state	US Route	State Route	Local Street	Alcohol-Involved	Drug-Involved	Deer-Involved	Fatalities	Injuries
Arenac	794	5	108	681	130	198	106	356	26	4	444	6	142
Bay	3,213	8	640	2,565	338	178	1,085	1,611	134	28	560	9	888
Genesee	10,656	49	2,295	8,312	1,755	430	1,663	6,795	376	123	1,212	53	3,192
Gladwin	829	1	94	734	0	0	347	482	30	4	500	2	137
Huron	1,537	0	147	1,390	0	0	682	855	39	6	1,085	0	200
Iosco	702	5	107	590	0	155	201	343	41	10	319	6	156
Lapeer	2,970	9	413	2,548	246	0	857	1,863	89	15	1,394	10	564
Midland	2,766	9	405	2,352	0	408	489	1,865	77	17	1,000	9	568
Ogemaw	838	2	124	712	145	0	249	443	17	8	447	2	176
Saginaw	5,555	18	996	4,541	651	0	1,867	3,021	192	41	1,148	18	1,427
St. Clair	3,728	19	626	3,083	748	0	652	2,317	120	31	968	22	850
Sanilac	1,711	2	150	1,559	0	0	796	914	52	8	1,226	3	203
Shiawassee	2,261	8	335	1,918	310	0	663	1,282	80	16	1,036	8	456
Tuscola	1,931	4	248	1,679	0	0	708	1,223	67	27	1,066	4	366
Total	39,491	139	6,688	32,664	4,323	1,369	10,365	23,370	1,340	338	12,405	152	9,325

MSP District 3 - Thumb & Tri-Cities (continued)

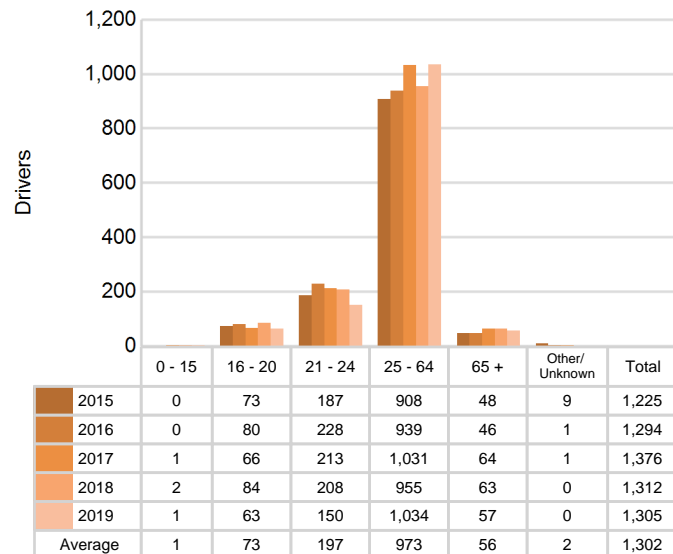
5-Year Trend - Drivers in Crashes Coded Drinking by Driver Age

Driver Age	2015		2016		2017		2018		2019	
	Total Drivers in Crashes	Total Drivers Coded Drinking	Total Drivers in Crashes	Total Drivers Coded Drinking	Total Drivers in Crashes	Total Drivers Coded Drinking	Total Drivers in Crashes	Total Drivers Coded Drinking	Total Drivers in Crashes	Total Drivers Coded Drinking
0 - 15	108	0	118	0	91	1	94	2	100	1
16 - 20	6,702	73	7,132	80	6,995	66	6,469	84	6,550	63
21 - 24	5,302	187	5,545	228	5,596	213	5,256	208	5,162	150
25 - 64	34,669	908	35,337	939	35,854	1,031	35,896	955	37,027	1,034
65 +	6,506	48	6,790	46	7,045	64	6,998	63	7,381	57
Unknown	3,389	9	3,594	1	3,493	1	3,387	0	3,518	0
Total	56,676	1,225	58,516	1,294	59,074	1,376	58,100	1,312	59,738	1,305

**5-Year Trend
Total Drivers in Crashes by Age**



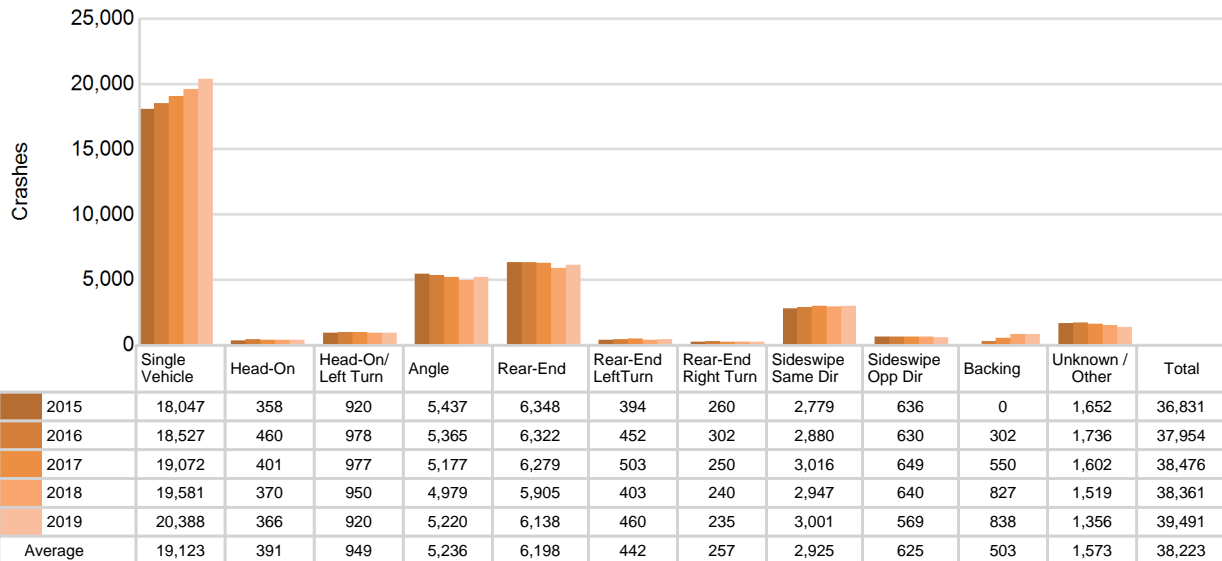
**5-Year Trend
Total Drivers Coded Drinking by Age**



5-Year Trend - Crashes by Crash Type

Crash Type	2015		2016		2017		2018		2019	
	Total Crashes	Fatal Crashes	Total Crashes	Fatal Crashes	Total Crashes	Fatal Crashes	Total Crashes	Fatal Crashes	Total Crashes	Fatal Crashes
Single motor vehicle	18,047	71	18,527	73	19,072	72	19,581	64	20,388	69
Head-on	358	8	460	25	401	15	370	19	366	24
Head-on / left turn	920	5	978	5	977	7	950	6	920	5
Angle	5,437	29	5,365	23	5,177	31	4,979	28	5,220	26
Rear-end	6,348	11	6,322	5	6,279	11	5,905	14	6,138	5
Rear-end left turn	394	1	452	0	503	2	403	0	460	1
Rear-end right turn	260	0	302	0	250	0	240	0	235	0
Sideswipe same direction	2,779	1	2,880	2	3,016	0	2,947	4	3,001	3
Sideswipe opposite direction	636	5	630	3	649	1	640	4	569	1
Backing	0	0	302	0	550	0	827	1	838	0
Other / Unknown	1,652	4	1,736	3	1,602	11	1,519	13	1,356	5
Uncoded and Errors	0	0	15	0	0	0	0	0	0	0
Total	36,831	135	37,969	139	38,476	150	38,361	153	39,491	139

5-Year Trend Crashes by Crash Type



MSP District 3 - Thumb & Tri-Cities (continued)

2019 - Bodily Alcohol Concentration (BAC) Results Among All Vehicle Drivers in Alcohol-Involved Crashes by Age

Age Group	Drivers				BAC Result Range for Drivers Coded Drinking				
	Total Drivers in Alcohol-Involved Crashes	Total Drivers Tested in all Crashes	Total Drivers Coded Drinking, Tested	Total Drivers Coded Drinking	BAC = 0.00	BAC 0.01 g/dL to 0.07 g/dL	BAC 0.08 g/dL to 0.16 g/dL	BAC 0.17 g/dL and Above	BAC Not Reported
0 - 15	2	4	1	1	0	0	0	0	1
16 - 20	110	86	52	63	1	5	24	12	21
21 - 24	189	155	120	150	0	14	46	43	47
25 - 64	1,353	1,093	876	1,034	0	71	260	333	370
65 +	104	92	49	57	1	3	14	13	26
Unknown	93	0	0	0	0	0	0	0	0
Total	1,851	1,430	1,098	1,305	2	93	344	401	465

Notes: BAC measured in grams (g) per deciliter (dL).

BAC may not be reported if drivers are not tested or if the results are not available immediately (as in the case of a blood test).

A driver may be coded by the officer as drinking even though no test is administered.

Alcohol-Involved Crashes

In 2019, there were 1,851 drivers in alcohol-involved crashes; 1,305 (70.5%) of those drivers were coded as had-been-drinking by the officer on the crash form.

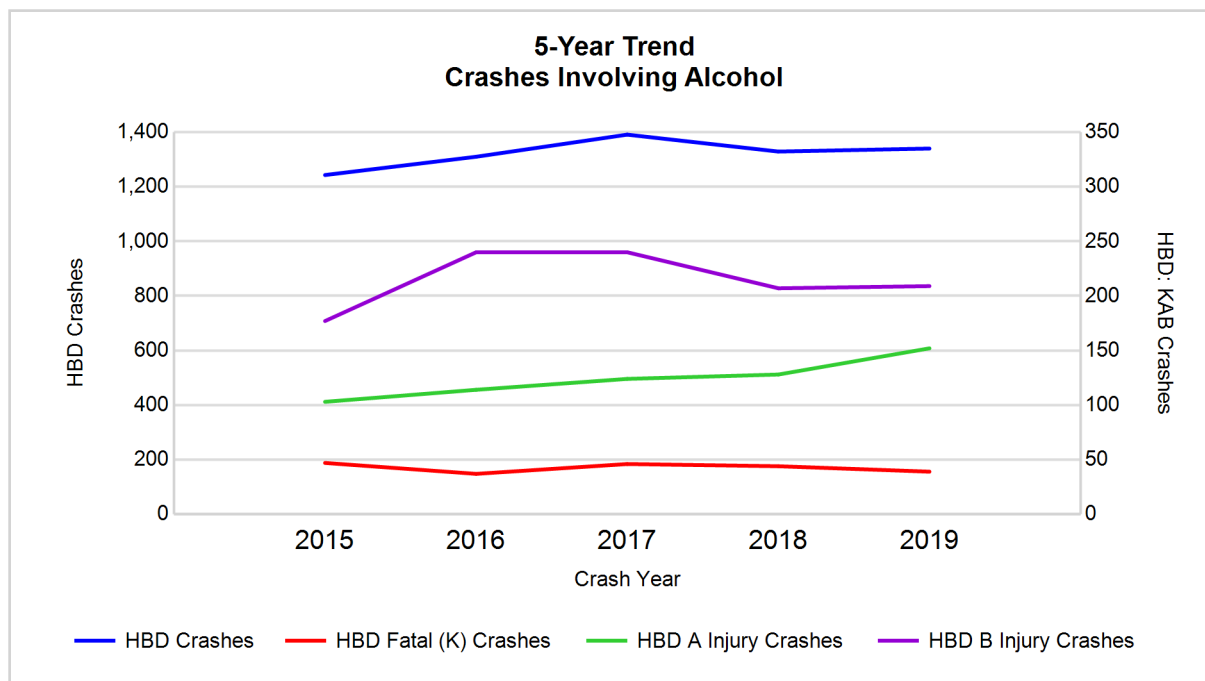
- 745 (57.1%) of the 1,305 drivers had a blood alcohol concentration (BAC) of 0.08 g/dL (grams per deciliter) or greater, and 401 (53.8%) of the 745 drivers had a BAC at or above 0.17 g/dL.
- 1,098 (84.1%) of the 1,305 drivers were coded as had-been-drinking and were tested for alcohol consumption.

5-Year Trend - Crashes Involving Alcohol

Year	All Crashes	HBD Crashes	% HBD	Fatal Crashes	HBD Fatal Crashes	% HBD	A Injury Crashes	HBD A Injury Crashes	% HBD	B Injury Crashes	HBD B Injury Crashes	% HBD
2015	36,831	1,243	3.4	135	47	34.8	498	103	20.7	1,628	177	10.9
2016	37,969	1,310	3.5	139	37	26.6	641	114	17.8	1,942	240	12.4
2017	38,476	1,391	3.6	150	46	30.7	653	124	19.0	1,956	240	12.3
2018	38,361	1,329	3.5	153	44	28.8	587	128	21.8	1,837	207	11.3
2019	39,491**	1,340	3.4	139	39	28.1	684**	152**	22.2**	1,866	209	11.2

Note: * Indicates that the most recent year is the lowest number or percentage reported in the 5-year period in that column

** Indicates that the most recent year is the highest number or percentage reported in the 5-year period in that column



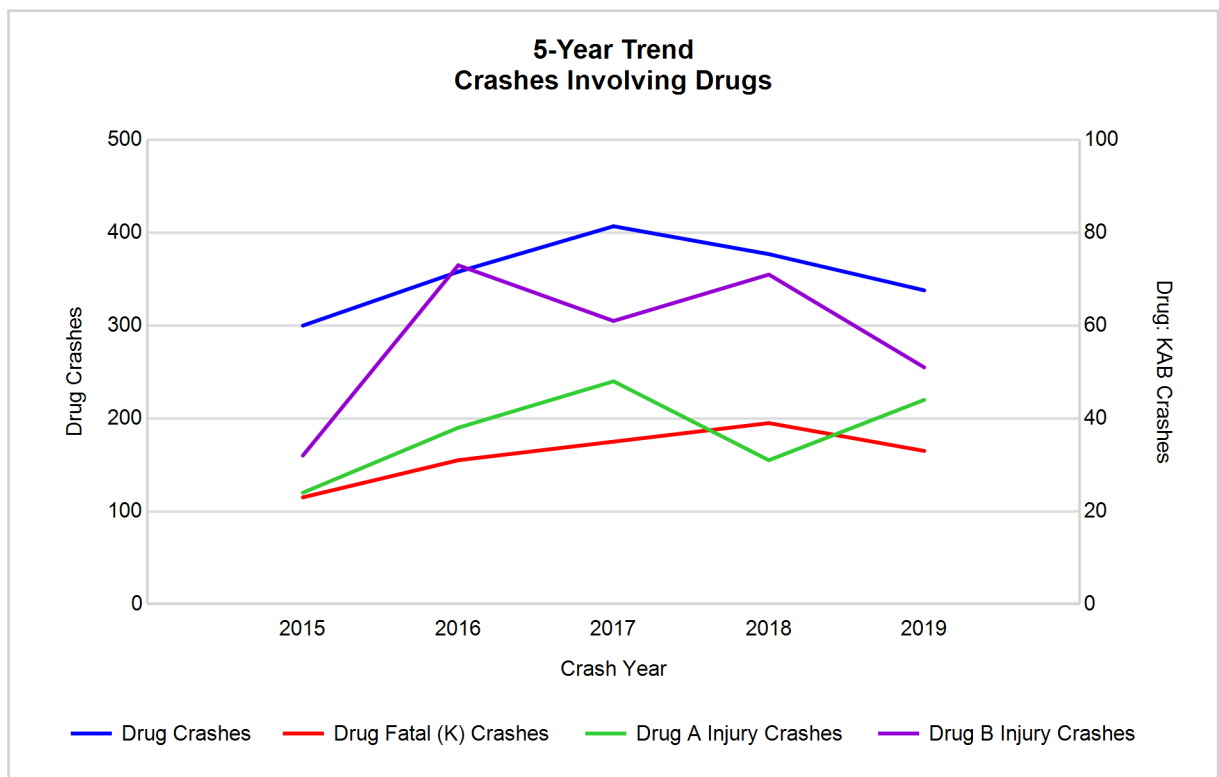
Note: Had-Been-Drinking (HBD)

5-Year Trend - Crashes Involving Drugs

Year	All Crashes	Drug Crashes	% Drug	Fatal Crashes	Drug Fatal Crashes	% Drug	A Injury Crashes	Drug A Injury Crashes	% Drug	B Injury Crashes	Drug B Injury Crashes	% Drug
2015	36,831	300	0.8	135	23	17.0	498	24	4.8	1,628	32	2.0
2016	37,969	358	0.9	139	31	22.3	641	38	5.9	1,942	73	3.8
2017	38,476	407	1.1	150	35	23.3	653	48	7.4	1,956	61	3.1
2018	38,361	377	1.0	153	39	25.5	587	31	5.3	1,837	71	3.9
2019	39,491**	338	0.9	139	33	23.7	684**	44	6.4	1,866	51	2.7

Note: * Indicates that the most recent year is the lowest number or percentage reported in the 5-year period in that column

** Indicates that the most recent year is the highest number or percentage reported in the 5-year period in that column



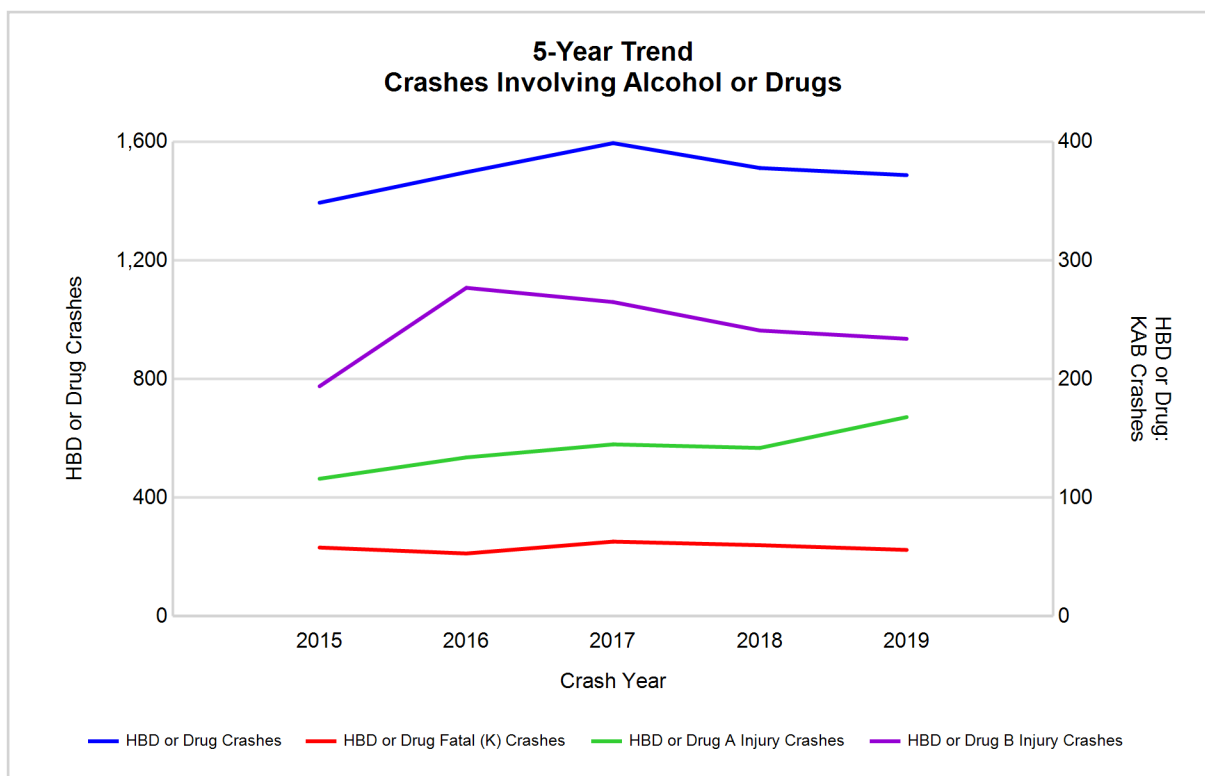
MSP District 3 - Thumb & Tri-Cities (continued)

5-Year Trend - Crashes Involving Alcohol or Drugs

Year	All Crashes	HBD or Drug Crashes	% HBD or Drug	Fatal Crashes	HBD or Drug Fatal Crashes	% HBD or Drug	A Injury Crashes	HBD or Drug A Injury Crashes	% HBD or Drug	B Injury Crashes	HBD or Drug B Injury Crashes	% HBD or Drug
2015	36,831	1,395	3.8	135	58	43.0	498	116	23.3	1,628	194	11.9
2016	37,969	1,498	3.9	139	53	38.1	641	134	20.9	1,942	277	14.3
2017	38,476	1,596	4.1	150	63	42.0	653	145	22.2	1,956	265	13.5
2018	38,361	1,512	3.9	153	60	39.2	587	142	24.2	1,837	241	13.1
2019	39,491**	1,488	3.8	139	56	40.3	684**	168**	24.6**	1,866	234	12.5

Note: * Indicates that the most recent year is the lowest number or percentage reported in the 5-year period in that column

** Indicates that the most recent year is the highest number or percentage reported in the 5-year period in that column



Note: Had-Been-Drinking (HBD)

2019 - Restraints Worn Among Vehicle Drivers and Injured Passengers by Vehicle Type

Vehicle Type	Total Occupants			Fatalities			A - Suspected Serious			B - Suspected Minor			C - Possible Injury			No Injury		
	Total	Used Restraint	%	Total	Used Restraint	%	Total	Used Restraint	%	Total	Used Restraint	%	Total	Used Restraint	%	Total	Used Restraint	%
Passenger car, SUV, van	47,791	44,126	92.3	88	47	53.4	485	375	77.3	1,654	1,469	88.8	5,047	4,806	95.2	38,352	37,429	97.6
Motor home	109	101	92.7	0	0	0.0	1	1	100.0	6	6	100.0	9	9	100.0	88	85	96.6
Pickup truck	10,588	9,753	92.1	21	11	52.4	111	77	69.4	359	311	86.6	764	718	94.0	8,863	8,636	97.4
Small truck under 10,000 lbs. GVWR	273	244	89.4	0	0	0.0	6	5	83.3	5	3	60.0	14	13	92.9	228	223	97.8
Motorcycle	447	252	56.4	17	6	35.3	112	57	50.9	147	90	61.2	71	48	67.6	87	51	58.6
Moped / goped	37	9	24.3	0	0	0.0	4	0	0.0	14	3	21.4	12	4	33.3	5	2	40.0
Go-cart / golf cart	13	3	23.1	2	0	0.0	3	0	0.0	1	0	0.0	1	0	0.0	6	3	50.0
Snowmobile	3	3	100.0	0	0	0.0	1	1	100.0	1	1	100.0	0	0	0.0	1	1	100.0
Off-Road Vehicle - ORV / All-Terrain Vehicle - ATV	61	25	41.0	0	0	0.0	16	6	37.5	20	12	60.0	9	4	44.4	15	3	20.0
Other	252	160	63.5	0	0	0.0	4	1	25.0	7	2	28.6	14	10	71.4	188	147	78.2
Truck/bus over 10,000 lbs.	1,647	1,485	90.2	1	1	100.0	8	5	62.5	29	22	75.9	83	37	44.6	1,459	1,420	97.3
Unknown	812	0	0.0	0	0	0.0	0	0	0.0	0	0	0.0	0	0	0.0	1	0	0.0
Total	62,033	56,161	90.5	129	65	50.4	751	528	70.3	2,243	1,919	85.6	6,024	5,649	93.8	49,293	48,000	97.4

Note: Restraint Use includes shoulder belt only used, lap belt only used, both lap and shoulder belts used, child restraint used, restraint failure, and helmet worn.

2019 - Restraints Worn Among Vehicle Drivers and Injured Passengers by Age

Age Group	Total Occupants			Fatalities			A - Suspected Serious			B - Suspected Minor			C - Possible Injury			No Injury		
	Total	Used Restraint	%	Total	Used Restraint	%	Total	Used Restraint	%	Total	Used Restraint	%	Total	Used Restraint	%	Total	Used Restraint	%
0 - 15	681	603	88.5	2	0	0.0	31	23	74.2	129	109	84.5	448	408	91.1	71	63	88.7
16 - 20	6,887	6,620	96.1	7	3	42.9	97	60	61.9	350	301	86.0	766	714	93.2	5,656	5,542	98.0
21 - 24	5,331	5,094	95.6	5	2	40.0	80	52	65.0	208	173	83.2	521	473	90.8	4,509	4,394	97.4
25 - 64	37,952	36,372	95.8	86	39	45.3	452	316	69.9	1,223	1,029	84.1	3,453	3,235	93.7	32,676	31,753	97.2
65 +	7,664	7,461	97.4	29	21	72.4	91	77	84.6	332	306	92.2	834	817	98.0	6,364	6,240	98.1
Unknown	3,518	11	0.3	0	0	0.0	0	0	0.0	1	1	100.0	2	2	100.0	17	8	47.1
Total	62,033	56,161	90.5	129	65	50.4	751	528	70.3	2,243	1,919	85.6	6,024	5,649	93.8	49,293	48,000	97.4

Note: Restraint Use includes shoulder belt only used, lap belt only used, both lap and shoulder belts used, child restraint used, restraint failure, and helmet worn.

MSP District 3 - Thumb & Tri-Cities (continued)

5-Year Trend - Restraint Use Among Drivers

Restraint Use	2015			2016			2017			2018			2019		
	Drivers	Fatal Drivers	Injured Drivers	Drivers	Fatal Drivers	Injured Drivers	Drivers	Fatal Drivers	Injured Drivers	Drivers	Fatal Drivers	Injured Drivers	Drivers	Fatal Drivers	Injured Drivers
No belts available	363	4	59	172	1	27	133	1	40	116	2	22	96	0	11
Shoulder belt only used	68	0	7	155	0	24	274	0	38	229	1	30	307	0	45
Lap belt only used	351	0	36	244	1	27	177	0	21	165	0	29	138	0	19
Both lap & shoulder belts used	50,505	33	5,475	52,202	41	6,179	52,883	45	6,065	52,041	47	5,800	53,468	46	5,874
No belts used	523	28	227	499	22	229	494	30	233	491	29	231	456	28	221
Child restraint used	2	0	0	10	0	0	5	0	0	3	0	1	0	0	0
Child restraint not used, unavailable or improper use	1	0	0	0	0	0	0	0	0	0	0	0	0	0	0
Restraint failure	25	0	1	20	0	3	21	0	5	11	0	2	16	0	2
Restraint use unknown	1,854	5	174	3,545	9	171	4,323	7	195	4,289	14	191	4,519	10	223
Helmet worn	315	9	222	366	6	284	274	11	199	260	10	198	260	5	198
Helmet not worn	187	16	133	214	13	156	167	13	133	171	7	132	188	7	140
Helmet use unknown	45	2	20	46	1	27	16	1	7	21	1	13	32	3	20
Uncoded & errors	2,437	0	4	1,043	0	0	307	0	0	303	0	1	258	0	0
Total	56,676	97	6,358	58,516	94	7,127	59,074	108	6,936	58,100	111	6,650	59,738	99	6,753

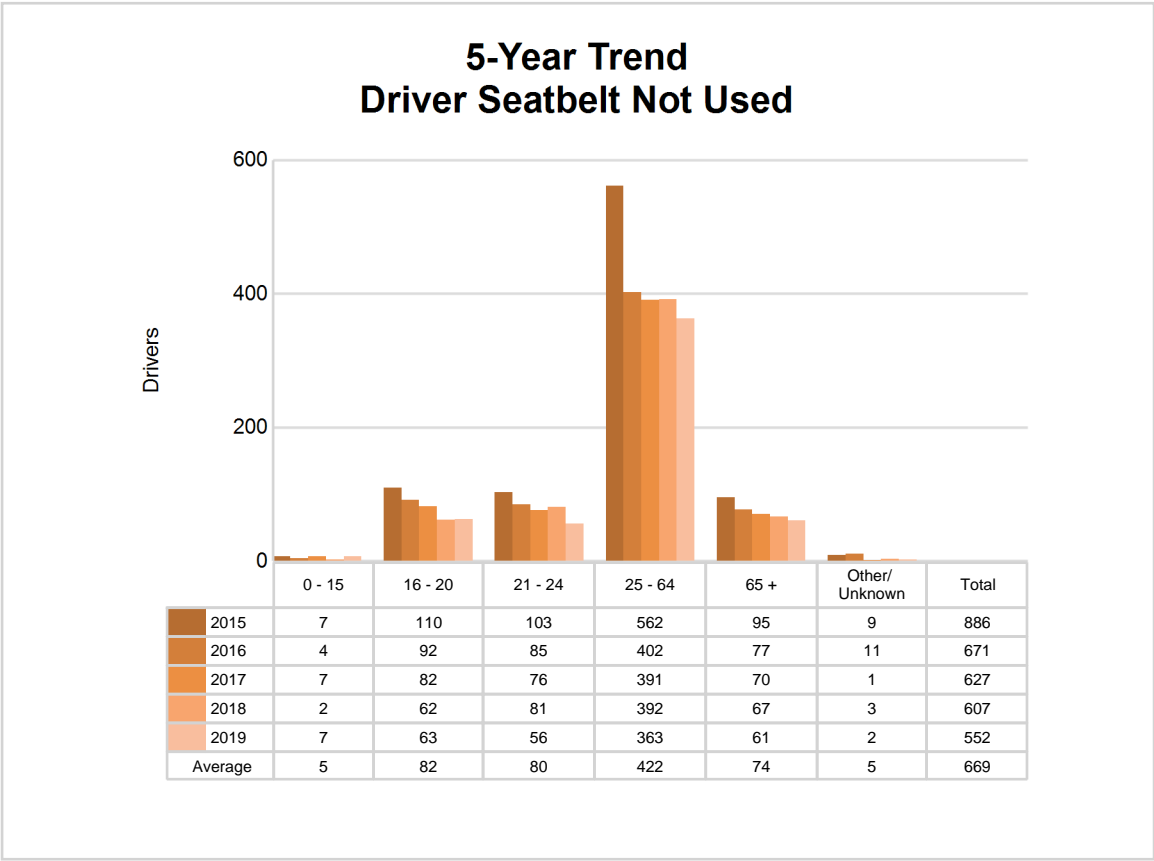
5-Year Trend - Restraint Use Among Drivers Coded Drinking

Restraint Use	2015			2016			2017			2018			2019		
	Drivers	Fatal Drivers	Injured Drivers	Drivers	Fatal Drivers	Injured Drivers	Drivers	Fatal Drivers	Injured Drivers	Drivers	Fatal Drivers	Injured Drivers	Drivers	Fatal Drivers	Injured Drivers
No belts available	10	1	8	3	0	2	4	0	2	7	1	2	1	0	0
Shoulder belt only used	2	0	0	4	0	1	9	0	3	3	0	0	11	0	2
Lap belt only used	10	0	5	4	0	1	5	0	2	1	0	1	3	0	2
Both lap & shoulder belts used	858	6	217	927	5	297	958	7	295	923	8	287	922	6	278
No belts used	105	12	71	106	8	69	117	12	82	114	11	74	111	13	74
Child restraint used	0	0	0	0	0	0	0	0	0	0	0	0	0	0	0
Child restraint not used, unavailable or improper use	0	0	0	0	0	0	0	0	0	0	0	0	0	0	0
Restraint failure	1	0	0	2	0	1	0	0	0	0	0	0	3	0	1
Restraint use unknown	173	2	54	193	4	50	223	3	59	220	4	67	216	3	70
Helmet worn	17	3	12	17	1	15	15	0	13	12	0	10	3	0	3
Helmet not worn	38	10	23	36	3	28	43	9	31	28	3	21	33	2	26
Helmet use unknown	5	0	5	2	1	1	1	1	0	4	0	3	2	0	0
Uncoded & errors	6	0	1	0	0	0	1	0	0	0	0	0	0	0	0
Total	1,225	34	396	1,294	22	465	1,376	32	487	1,312	27	465	1,305	24	456

5-Year Trend - Seatbelt Not Used Among Drivers by Age

Age Group	2015			2016			2017			2018			2019		
	Drivers	Fatal Drivers	Injured Drivers	Drivers	Fatal Drivers	Injured Drivers	Drivers	Fatal Drivers	Injured Drivers	Drivers	Fatal Drivers	Injured Drivers	Drivers	Fatal Drivers	Injured Drivers
0 - 15	7	1	4	4	0	2	7	0	3	2	0	2	7	0	2
16 - 20	110	3	38	92	2	39	82	0	46	62	2	23	63	1	39
21 - 24	103	2	40	85	2	40	76	5	42	81	3	45	56	3	32
25 - 64	562	19	178	402	11	146	391	19	158	392	20	164	363	21	137
65 +	95	7	23	77	8	29	70	7	24	67	6	19	61	3	22
Unknown	9	0	3	11	0	0	1	0	0	3	0	0	2	0	0
Total	886	32	286	671	23	256	627	31	273	607	31	253	552	28	232

Note: Seatbelt Not Used includes no belts available or no belts used.

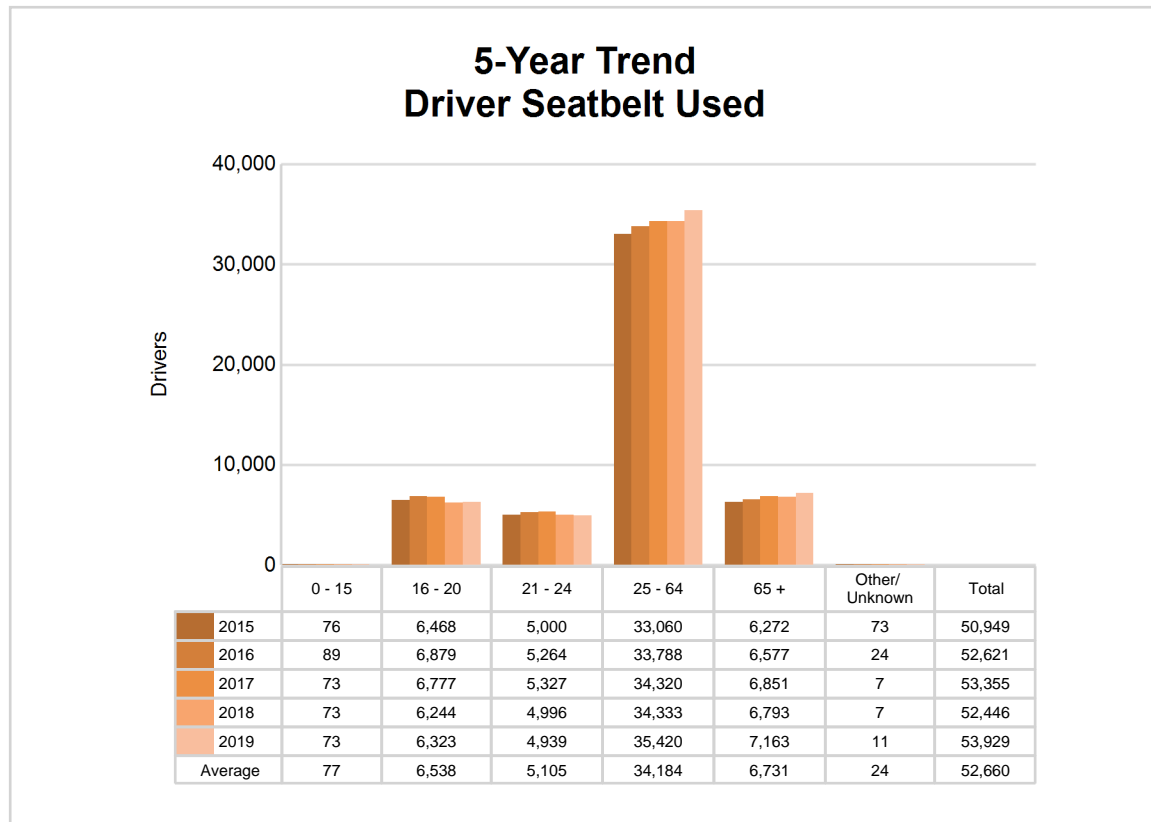


MSP District 3 - Thumb & Tri-Cities (continued)

5-Year Trend - Seatbelt Used Among Drivers by Age

Age Group	2015			2016			2017			2018			2019		
	Drivers	Fatal Drivers	Injured Drivers	Drivers	Fatal Drivers	Injured Drivers	Drivers	Fatal Drivers	Injured Drivers	Drivers	Fatal Drivers	Injured Drivers	Drivers	Fatal Drivers	Injured Drivers
0 - 15	76	0	7	89	0	8	73	0	12	73	1	13	73	0	12
16 - 20	6,468	2	772	6,879	4	844	6,777	2	805	6,244	5	717	6,323	2	785
21 - 24	5,000	1	571	5,264	3	627	5,327	4	645	4,996	1	559	4,939	1	549
25 - 64	33,060	20	3,412	33,788	26	3,858	34,320	21	3,805	34,333	29	3,710	35,420	29	3,677
65 +	6,272	10	756	6,577	9	896	6,851	18	862	6,793	12	862	7,163	14	914
Unknown	73	0	1	24	0	0	7	0	0	7	0	0	11	0	3
Total	50,949	33	5,519	52,621	42	6,233	53,355	45	6,129	52,446	48	5,861	53,929	46	5,940

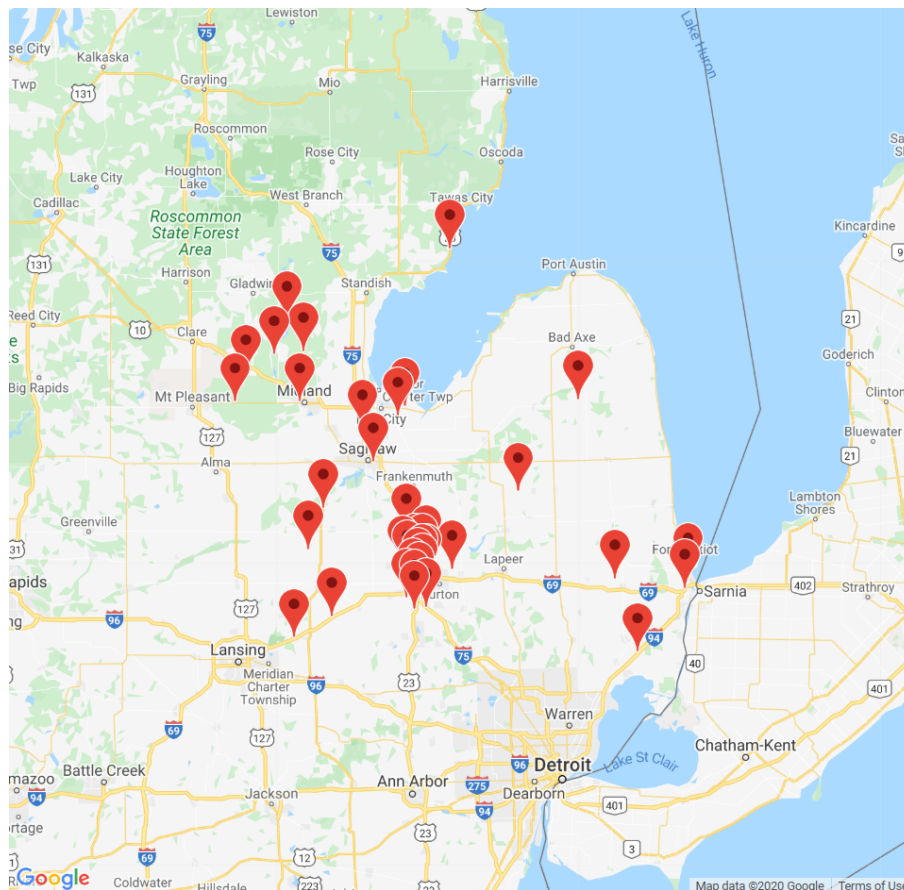
Note: Seatbelt Used includes shoulder belt only used, lap belt only used, both lap and shoulder belts used, and restraint failure.



5-Year Trend - Drivers in Crashes by Hazardous Action

Hazardous Action	2015		2016		2017		2018		2019	
	Total Drivers in Crashes	Drivers in Fatal Crashes	Total Drivers in Crashes	Drivers in Fatal Crashes	Total Drivers in Crashes	Drivers in Fatal Crashes	Total Drivers in Crashes	Drivers in Fatal Crashes	Total Drivers in Crashes	Drivers in Fatal Crashes
None	31,311	89	31,542	86	32,111	96	31,684	110	33,523	92
Speed too fast	4,139	32	4,472	24	4,167	19	4,810	28	4,234	23
Speed too slow	58	1	50	0	47	0	46	1	22	0
Failed to yield	4,952	19	5,154	16	5,264	21	4,986	13	5,046	14
Disregard traffic control	1,436	10	1,390	11	1,289	14	1,289	18	1,318	11
Drove wrong way	50	0	49	4	37	1	41	2	32	0
Drove left of center	305	7	382	10	342	10	355	13	312	12
Improper passing	254	0	293	1	312	1	273	3	332	3
Improper lane use	936	2	955	2	1,042	2	1,161	0	1,158	2
Improper turn	684	0	638	1	672	2	598	0	649	1
Improper/no signal	83	0	68	0	59	0	52	0	54	0
Improper backing	995	1	993	1	828	0	899	0	879	0
Unable to stop in assured clear distance	6,075	7	6,292	4	6,247	3	5,808	14	6,117	6
Other	1,926	15	2,055	12	1,963	11	1,913	15	1,975	9
Unknown	1,167	20	1,795	22	2,244	21	2,016	19	2,001	23
Reckless driving	339	4	289	4	310	10	279	7	293	7
Careless/negligent driving	1,766	10	1,715	11	1,776	17	1,571	17	1,548	14
Uncoded & errors	200	0	384	1	364	3	319	3	245	3
Total	56,676	217	58,516	210	59,074	231	58,100	263	59,738	220

MSP District 3 - Thumb & Tri-Cities (continued)



The picture above represents all 2019 alcohol-involved fatal crashes in District 3.

In 2019, there were 1,340 alcohol-involved crashes in District 3:

- 39 K - Fatal Crashes
- 152 A - Suspected Serious Injury Crashes
- 209 B - Suspected Minor Injury Crashes
- 227 C - Possible Injury Crashes
- 713 O - Property Damage Only/No Injury Crashes

Office of Highway Safety Planning

Physical Address:

7150 Harris Drive
Dimondale, Michigan 48821

Mailing Address:

P.O. Box 30634
Lansing, Michigan 48909

Phone: (517) 284-3112

Fax: (517) 284-3151

Find us on the web:

MichiganTrafficCrashFacts.org

