

MTCF

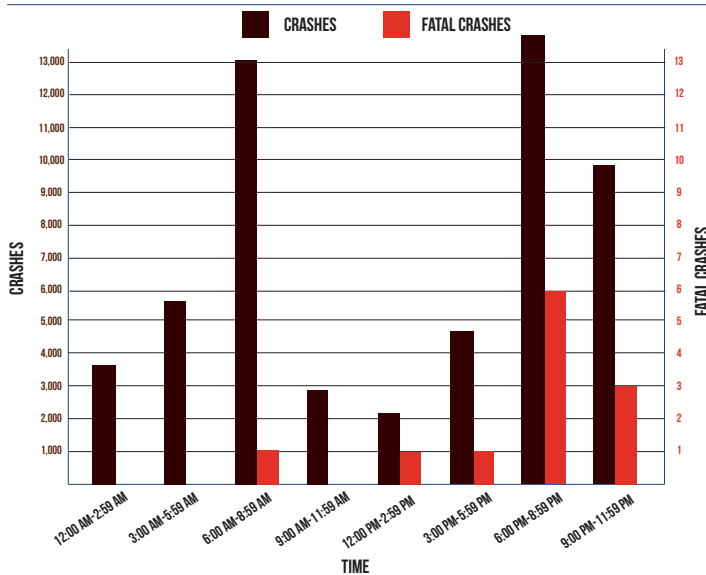
Michigan Traffic Crash Facts

DEER

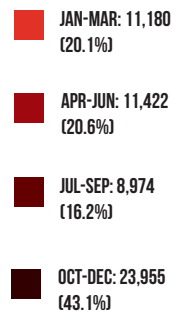
2019

Deer crashes include situations where a deer is a contributing factor but does not necessarily come in contact with a traffic unit.

MOTOR VEHICLE-DEER CRASHES BY TIME OF DAY



MOTOR VEHICLE-DEER CRASHES BY TIME OF YEAR



Michigan had 55,531 (17.7% of the total crashes) motor vehicle-deer crashes.

Passenger cars, SUVs, and vans represented 79.2 percent (44,231) of the vehicles involved.

As a result of vehicle-deer crashes, 1,429 people were injured and 12 people were killed. Four (33.3%) of those killed were occupants in passenger vehicles and eight (66.7%) killed were motorcyclists.

Motor vehicle-deer involved crashes were highest during the 7:00-7:59 AM time period (5,570).

The top 10 counties experiencing vehicle-deer crashes were: Oakland 1,928; Kent 1,684; Jackson 1,630; Lapeer 1,394; Ottawa 1,288; Sanilac 1,226; Genesee 1,212; Allegan 1,210; Calhoun 1,195; and Clinton 1,174.

The highest number of vehicle-deer crashes occurred during November (9,885).

Of the motor vehicle-deer crashes, 23,955 (43.1%) occurred during the fourth quarter of the year.

Michigan Department of State Police
Office of Highway Safety Planning - Traffic Safety Programs (517) 284-3112
WWW.MICHIGAN.GOV/OHSP