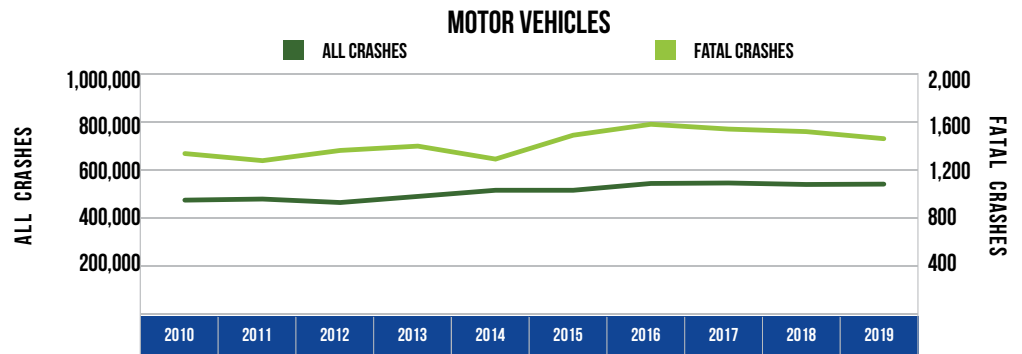


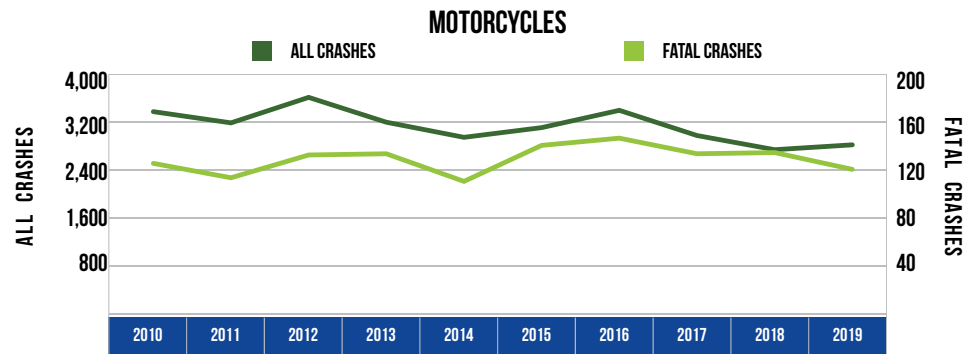
10 YEAR TRENDS-STATEWIDE (CONTINUED)

MOTOR VEHICLES		
Year	All Crashes	Fatal Crashes
2010	468,968	1,326
2011	473,501	1,267
2012	459,030	1,352
2013	484,446	1,388
2014	510,086	1,280
2015	510,074	1,479
2016	538,412	1,570
2017	540,387	1,530
2018	534,223	1,509
2019	535,721	1,450



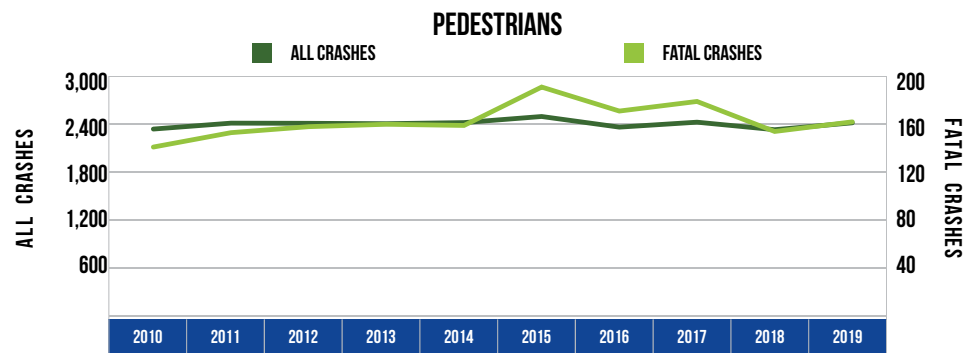
There were 535,721 motor vehicles involved in all crashes in 2019, up 14.2 percent from 2010. There were 1,450 motor vehicles involved in fatal crashes in 2019, up 9.4 percent from 2010.

MOTORCYCLES		
Year	All Crashes	Fatal Crashes
2010	3,362	125
2011	3,175	113
2012	3,600	132
2013	3,186	133
2014	2,934	110
2015	3,096	140
2016	3,384	146
2017	2,964	133
2018	2,728	134
2019	2,809	120



There were 2,809 motorcycles involved in crashes in 2019, a 16.4 percent decrease from 2010. There were 120 motorcycles involved in fatal crashes in 2019, down 4.0 percent from 2010.

PEDESTRIANS		
Year	All Crashes	Fatal Crashes
2010	2,325	140
2011	2,399	152
2012	2,397	157
2013	2,392	159
2014	2,406	158
2015	2,482	190
2016	2,349	170
2017	2,411	178
2018	2,317	153
2019	2,403	161



There were 2,403 pedestrians involved in crashes in 2019, up 3.4 percent from 2010. There were 161 pedestrians involved in fatal crashes in 2019, up 15.0 percent from 2010.