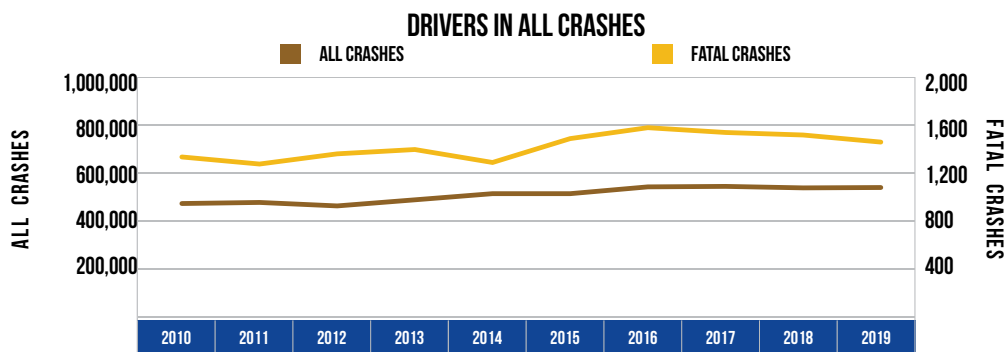


## 10 YEAR TRENDS-STATEWIDE (CONTINUED)

### DRIVERS IN ALL CRASHES

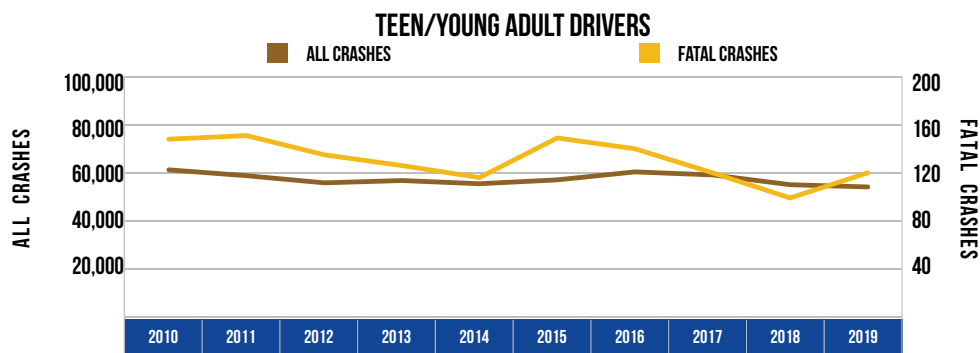
| Year | All Crashes | Fatal Crashes |
|------|-------------|---------------|
| 2010 | 468,968     | 1,326         |
| 2011 | 473,501     | 1,267         |
| 2012 | 459,030     | 1,352         |
| 2013 | 484,446     | 1,388         |
| 2014 | 510,086     | 1,280         |
| 2015 | 510,074     | 1,479         |
| 2016 | 538,412     | 1,570         |
| 2017 | 540,387     | 1,530         |
| 2018 | 534,223     | 1,509         |
| 2019 | 535,721     | 1,450         |



The number of drivers involved in all crashes increased 14.2 percent over the 10-year period. The number of drivers involved in fatal crashes increased 9.4 percent over the 10-year period.

### TEEN/YOUNG ADULT DRIVERS (AGE 16-20)

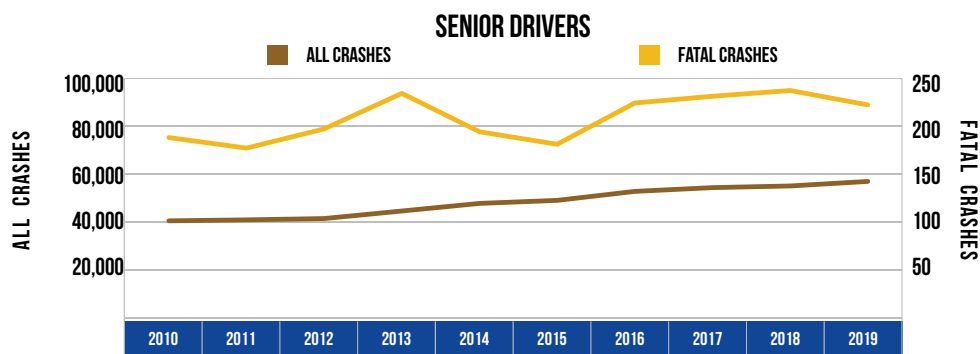
| Year | All Crashes | Fatal Crashes |
|------|-------------|---------------|
| 2010 | 60,721      | 147           |
| 2011 | 58,279      | 150           |
| 2012 | 55,307      | 134           |
| 2013 | 56,264      | 125           |
| 2014 | 54,935      | 115           |
| 2015 | 56,544      | 148           |
| 2016 | 59,865      | 139           |
| 2017 | 58,607      | 119           |
| 2018 | 54,530      | 98            |
| 2019 | 53,586      | 119           |



Teen/young adult drivers (age 16-20) represented 6.3 percent of the licensed drivers in 2019. The number of teen/young adult drivers in all crashes has decreased by 11.8 percent since 2010. Their involvement in fatal crashes has decreased 19.0 percent during the same time period.

### SENIOR DRIVERS (AGE 65 & OVER)

| Year | All Crashes | Fatal Crashes |
|------|-------------|---------------|
| 2010 | 40,096      | 187           |
| 2011 | 40,495      | 176           |
| 2012 | 41,047      | 196           |
| 2013 | 44,183      | 233           |
| 2014 | 47,356      | 193           |
| 2015 | 48,615      | 180           |
| 2016 | 52,362      | 223           |
| 2017 | 53,934      | 230           |
| 2018 | 54,621      | 236           |
| 2019 | 56,515      | 221           |

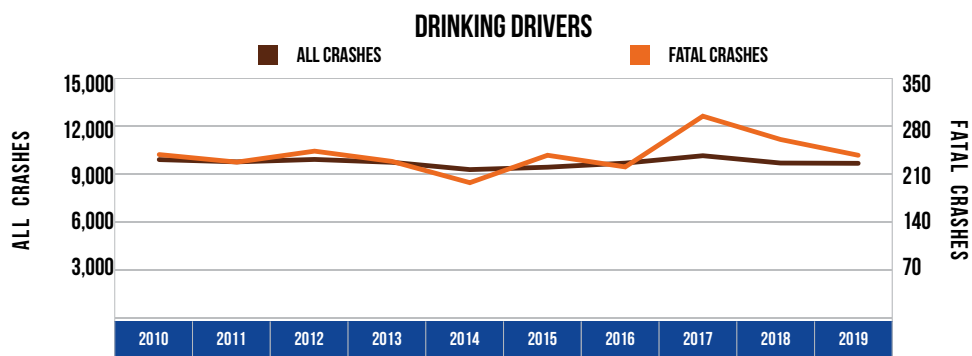


Senior drivers (age 65 and over) represented 21.8 percent of the licensed drivers in 2019. The number of drivers age 65 and over in all crashes has increased 40.9 percent since 2010. Senior driver involvement in fatal crashes increased 18.2 percent during the same time period.

## 10 YEAR TRENDS-STATEWIDE (CONTINUED)

### DRINKING DRIVERS

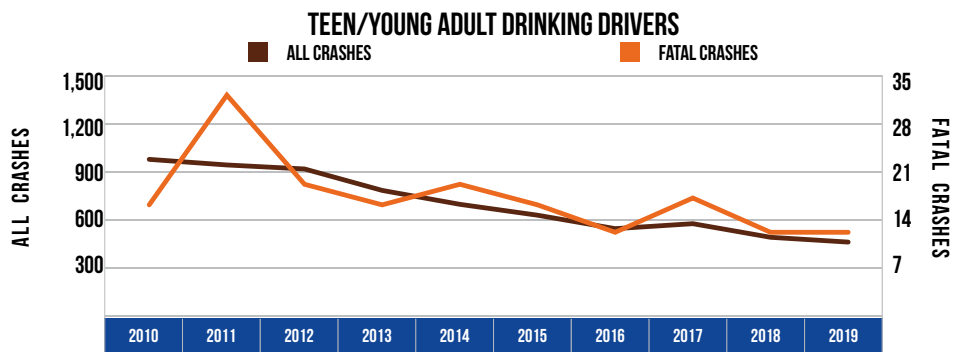
| Year | All Crashes | Fatal Crashes |
|------|-------------|---------------|
| 2010 | 9,843       | 237           |
| 2011 | 9,701       | 226           |
| 2012 | 9,853       | 242           |
| 2013 | 9,673       | 227           |
| 2014 | 9,218       | 196           |
| 2015 | 9,368       | 236           |
| 2016 | 9,623       | 219           |
| 2017 | 10,085      | 293           |
| 2018 | 9,628       | 259           |
| 2019 | 9,610       | 236           |



Drinking driver involvement in all crashes decreased by 2.4 percent from 2010. Drinking driver involvement in fatal crashes decreased by 0.4 percent from 2010.

### TEEN/YOUNG ADULT DRINKING DRIVERS (AGE 16-20)

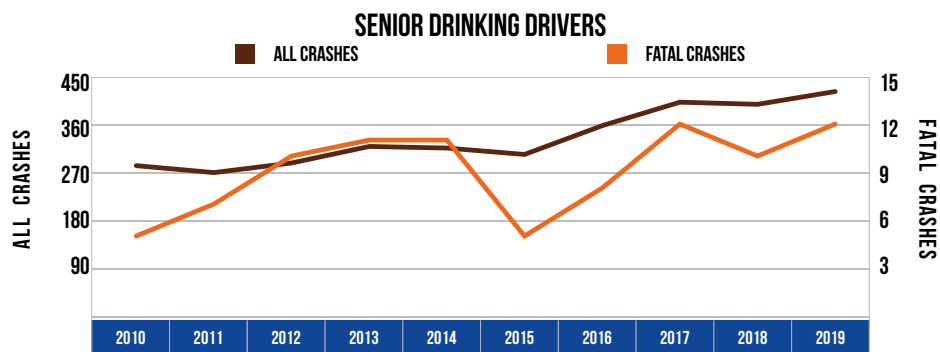
| Year | All Crashes | Fatal Crashes |
|------|-------------|---------------|
| 2010 | 970         | 16            |
| 2011 | 935         | 32            |
| 2012 | 910         | 19            |
| 2013 | 776         | 16            |
| 2014 | 689         | 19            |
| 2015 | 621         | 16            |
| 2016 | 537         | 12            |
| 2017 | 568         | 17            |
| 2018 | 483         | 12            |
| 2019 | 453         | 12            |



The number of teen/young adult drinking drivers (age 16-20) in all crashes decreased by 53.3 percent, and their involvement in fatal crashes decreased by 25.0 percent from 2010.

### SENIOR DRINKING DRIVERS (AGE 65 & OVER)

| Year | All Crashes | Fatal Crashes |
|------|-------------|---------------|
| 2010 | 282         | 5             |
| 2011 | 269         | 7             |
| 2012 | 287         | 10            |
| 2013 | 318         | 11            |
| 2014 | 315         | 11            |
| 2015 | 303         | 5             |
| 2016 | 357         | 8             |
| 2017 | 401         | 12            |
| 2018 | 397         | 10            |
| 2019 | 421         | 12            |



The number of senior drinking drivers (age 65 and over) in all crashes increased by 49.3 percent from 2010. Their involvement in fatal crashes increased by 140.0 percent from 2010.