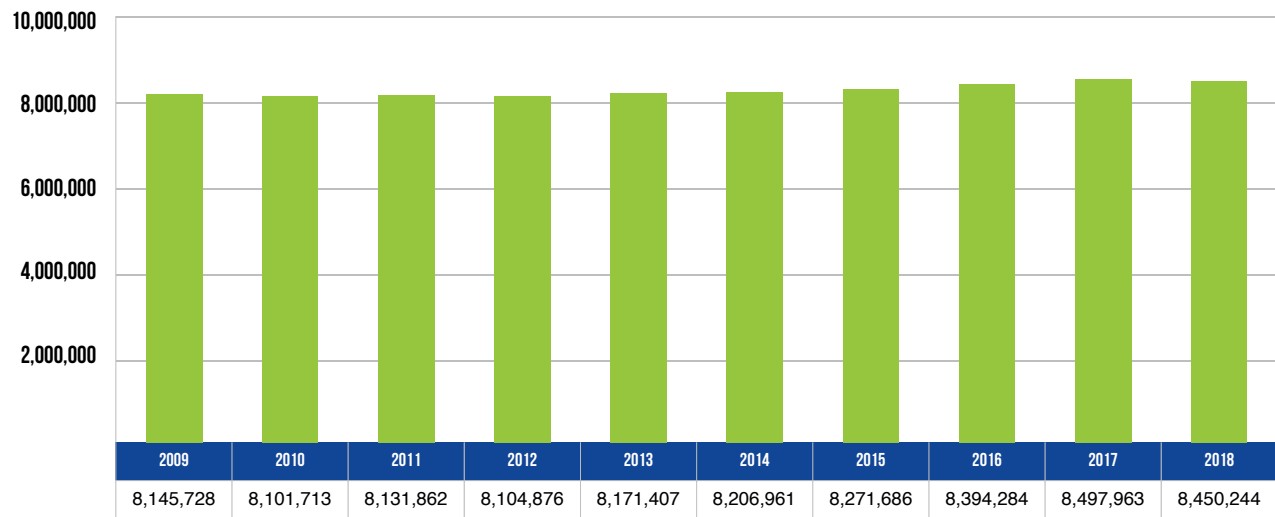


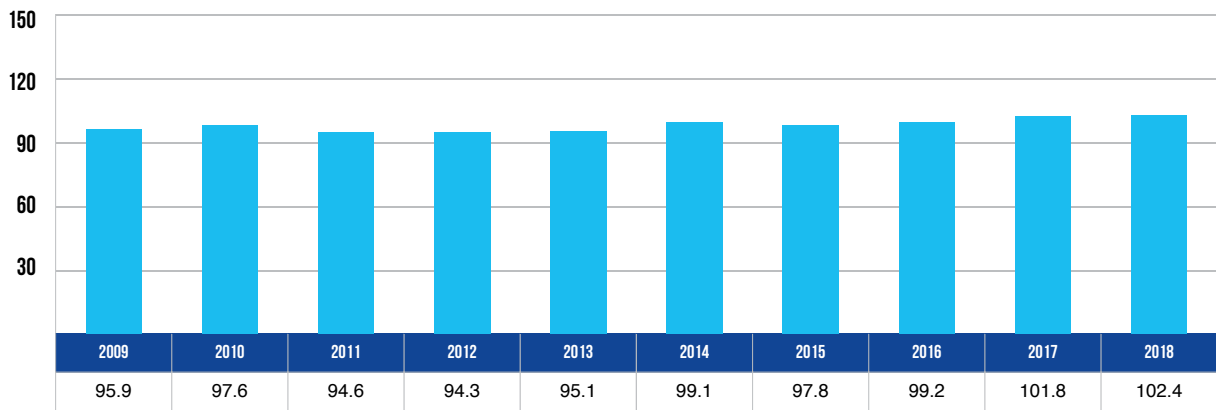
10 YEAR TRENDS-STATEWIDE

VEHICLE REGISTRATIONS



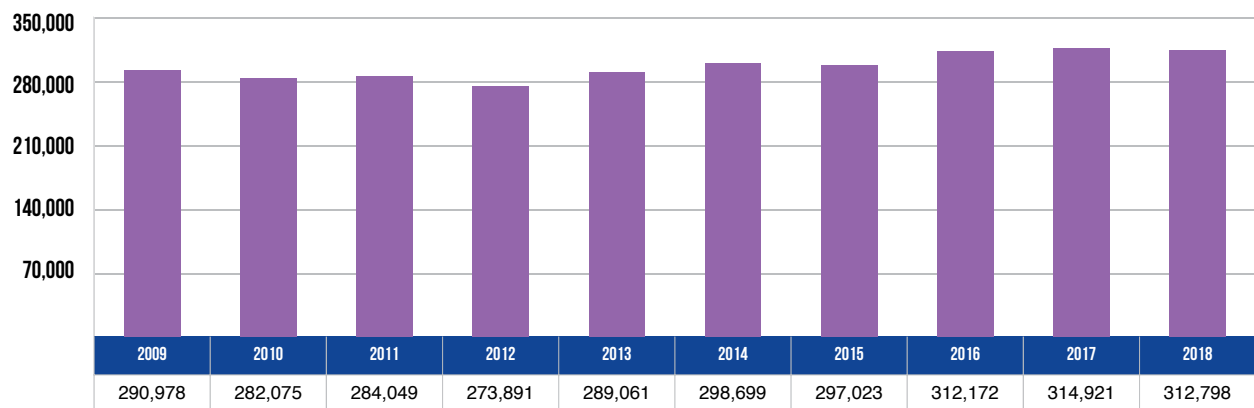
Vehicle registrations increased 3.7 percent over the 10-year period.

VEHICLE MILES TRAVELED (BILLIONS)



Vehicle miles traveled increased 6.8 percent over the 10-year period.

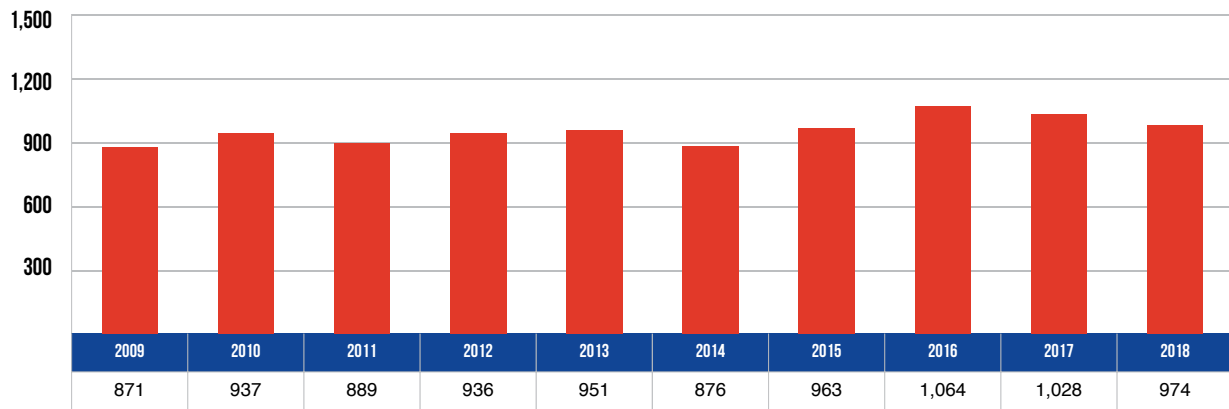
CRASHES



There were 312,798 total crashes statewide in 2018 - a 7.5 percent increase from 2009.

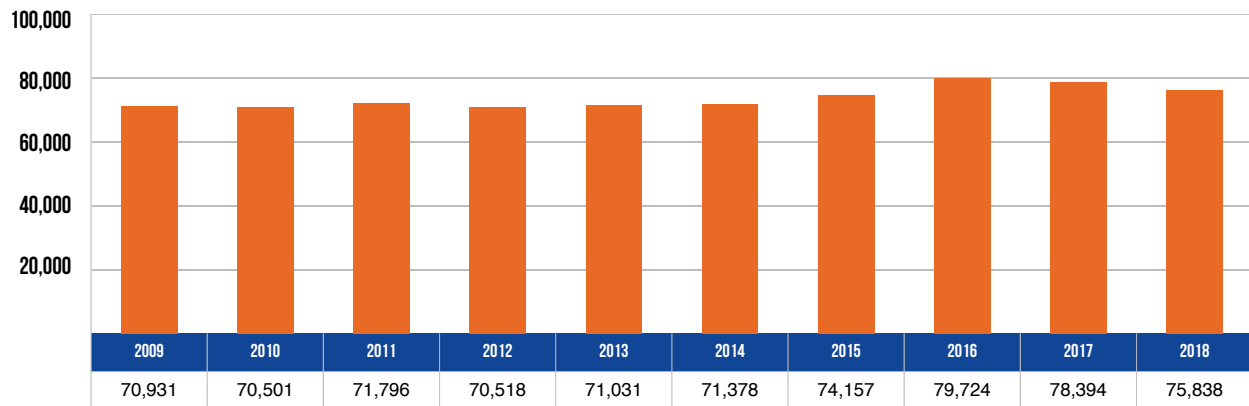
10 YEAR TRENDS-STATEWIDE (CONTINUED)

DEATHS



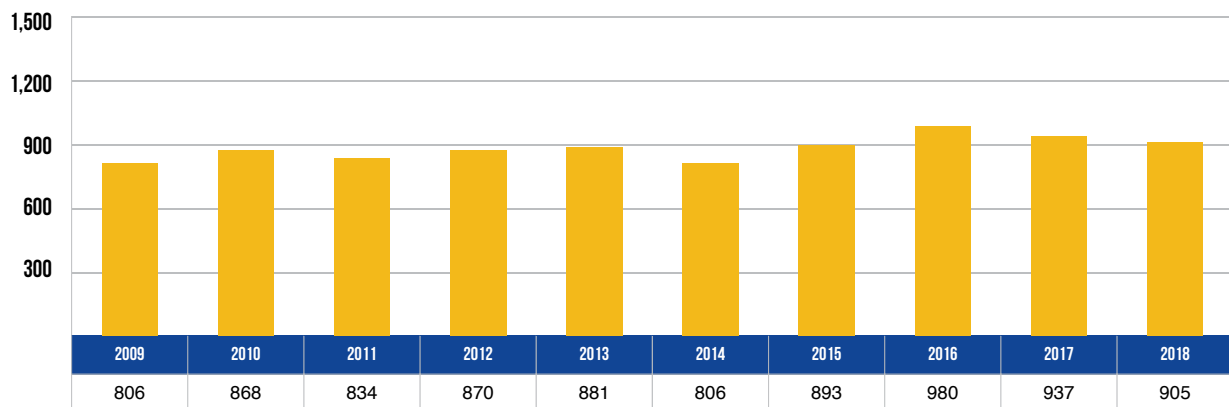
In 2018, 974 people died in motor vehicle crashes - an increase of 11.8 percent from 2009.

INJURIES



In 2018, 75,838 people received injuries in motor vehicle crashes - up 6.9 percent from 70,931 in 2009.

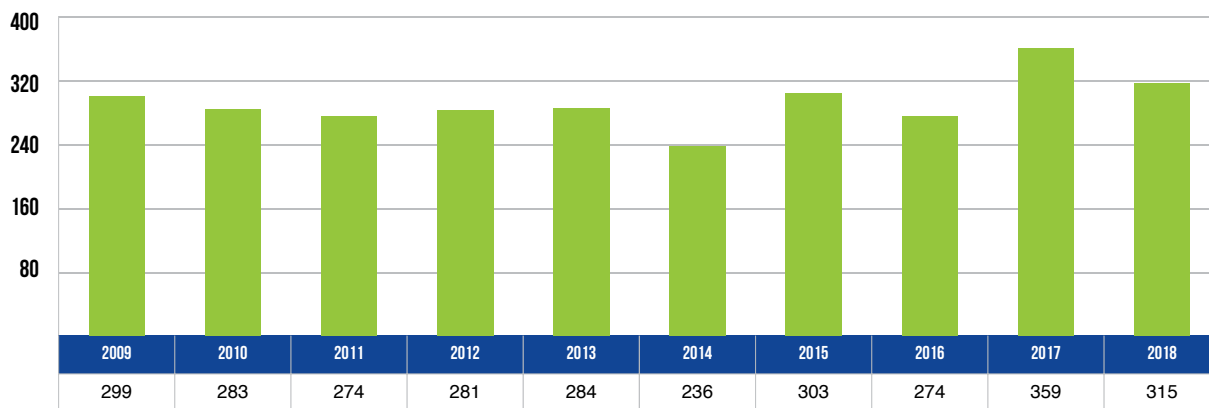
FATAL CRASHES



In 2018, there were 905 fatal crashes - up 12.3 percent from 806 in 2009.

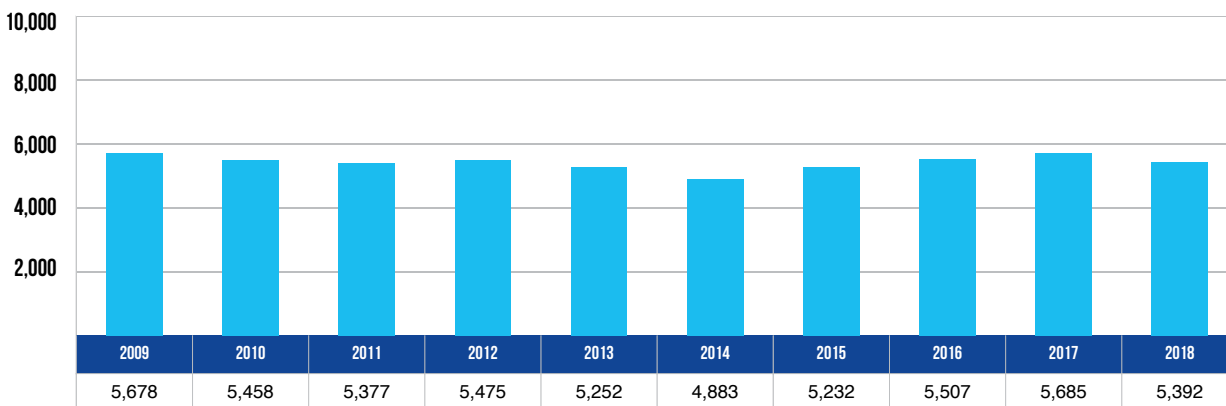
10 YEAR TRENDS-STATEWIDE (CONTINUED)

ALCOHOL-INVOLVED DEATHS



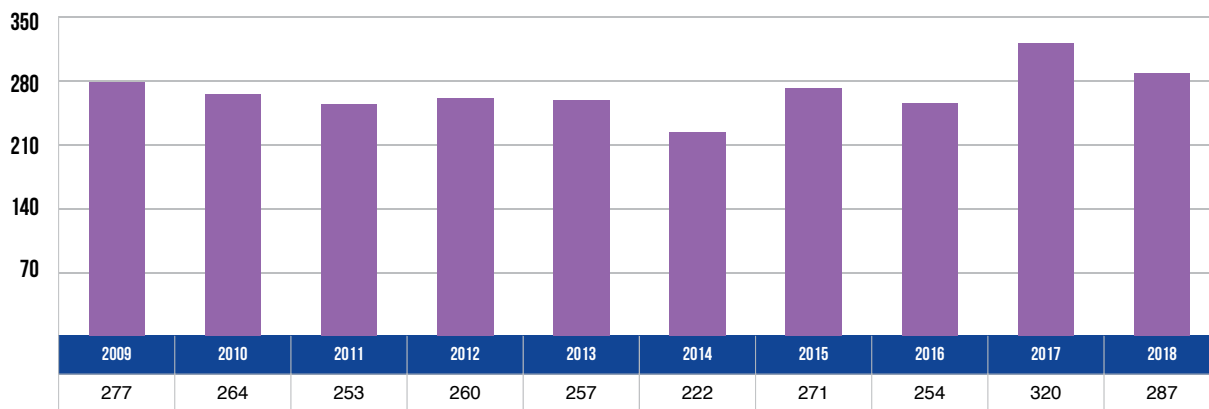
There were 315 deaths in alcohol-involved crashes in 2018 - up 5.4 percent from 2009.

ALCOHOL-INVOLVED INJURIES



There were 5,392 injuries in alcohol-involved crashes in 2018 - down 5.0 percent from 2009.

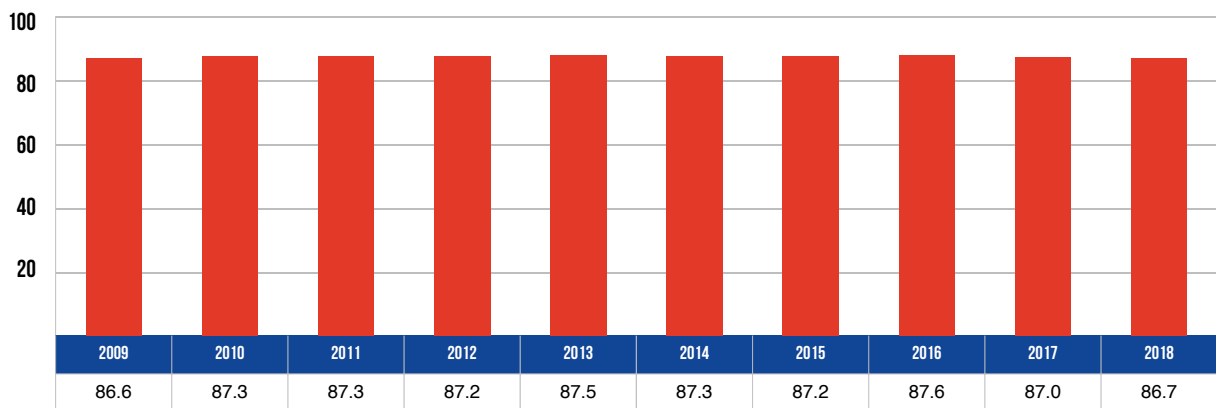
ALCOHOL-INVOLVED FATAL CRASHES



There were 287 alcohol-involved fatal crashes in 2018 - up 3.6 percent from 2009.

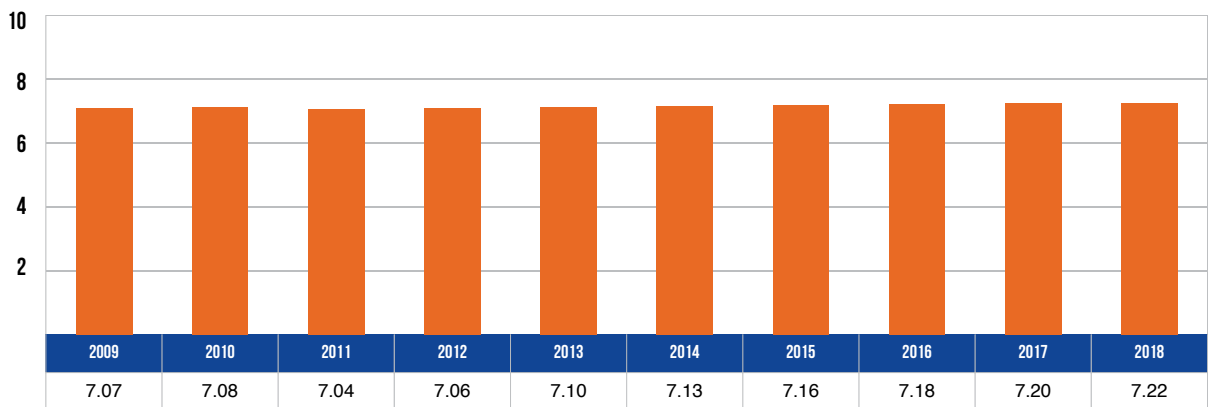
10 YEAR TRENDS-STATEWIDE (CONTINUED)

RESTRAINT USAGE IN CRASHES



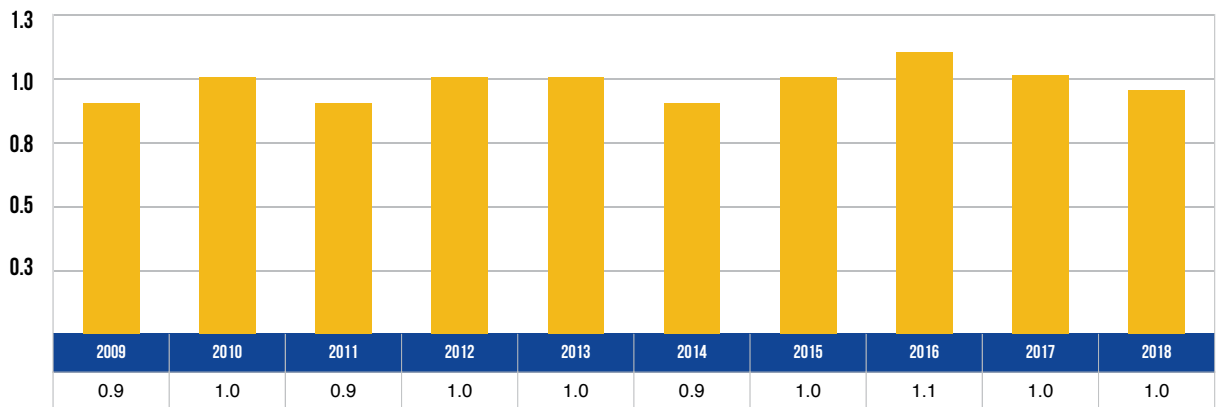
The percentage of motor vehicle occupants using restraints as reported by police in traffic crashes was 86.7 percent in 2018, virtually unchanged from 2009.

DRIVERS IN MICHIGAN (MILLIONS)



There were 7,222,165 licensed drivers on Michigan roadways in 2018 - an increase of 2.1 percent from 2009.

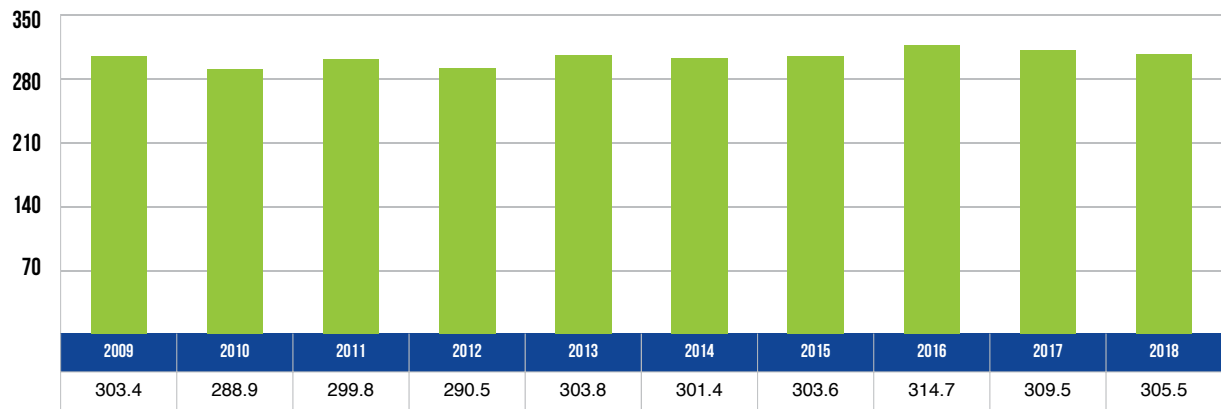
FATALITIES PER 100 MILLION VEHICLE MILES TRAVELED



The death rate of 0.95 fatalities per 100 million VMT in 2018 was an increase of 4.7% from the death rate of 0.91 in 2009.

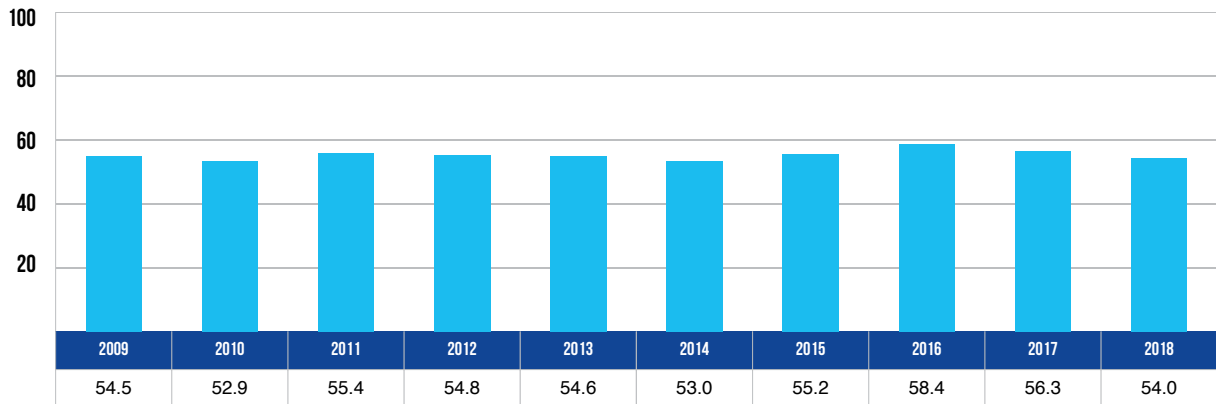
10 YEAR TRENDS-STATEWIDE (CONTINUED)

TOTAL CRASHES PER 100 MILLION VEHICLE MILES TRAVELED



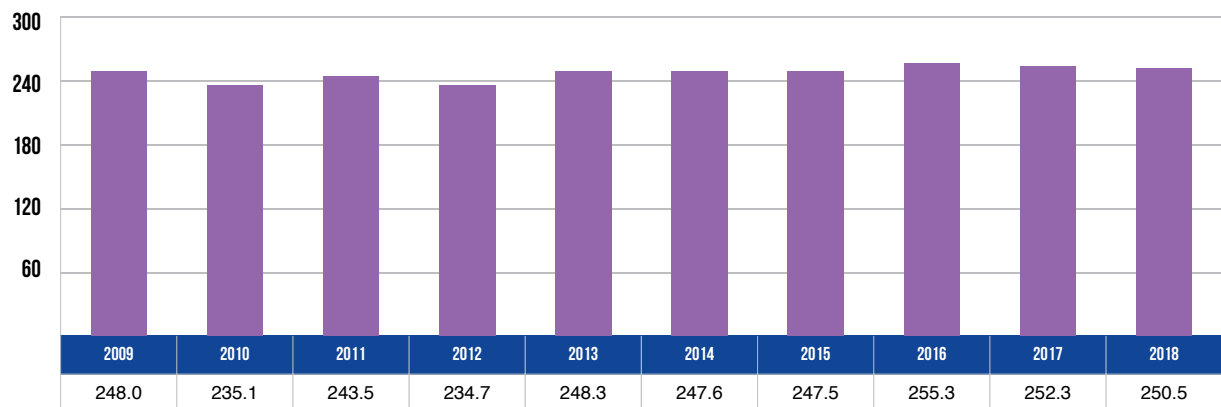
The total crash rate of 305.5 crashes in 2018 was a 0.7 percent increase from 2009.

INJURY CRASHES PER 100 MILLION VEHICLE MILES TRAVELED



The injury crash rate of 54.0 crashes in 2018 was a 0.9 percent decrease from 2009.

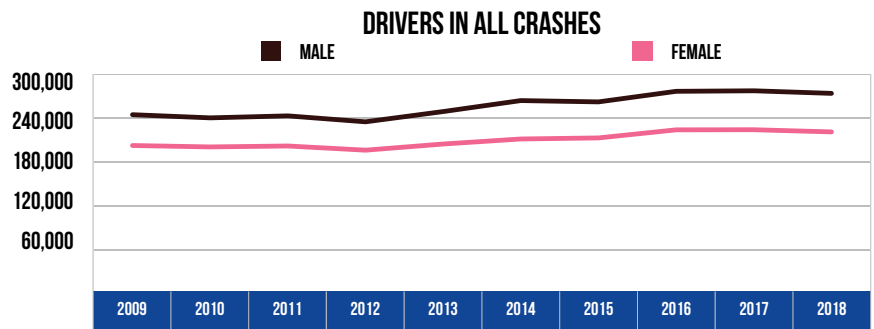
PROPERTY DAMAGE CRASHES PER 100 MILLION VEHICLE MILES TRAVELED



The property damage crash rate of 250.5 in 2018 was a 1.0 percent increase from 2009.

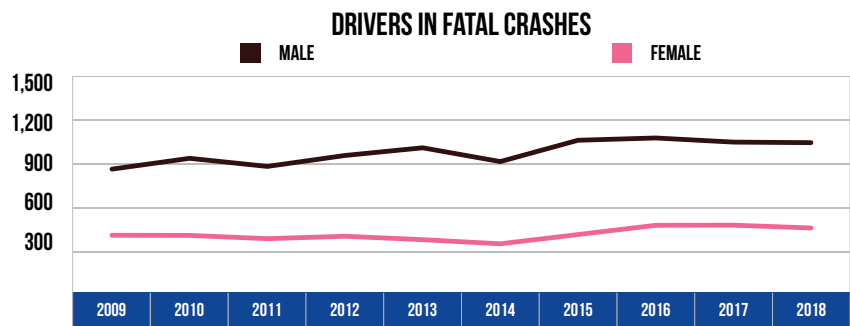
10 YEAR TRENDS-STATEWIDE (CONTINUED)

DRIVERS IN ALL CRASHES		
Year	Male	Female
2009	242,490	199,166
2010	238,048	197,183
2011	240,850	198,488
2012	232,475	192,605
2013	246,908	201,264
2014	262,359	208,359
2015	260,508	209,843
2016	275,382	221,200
2017	276,112	221,365
2018	272,480	218,294



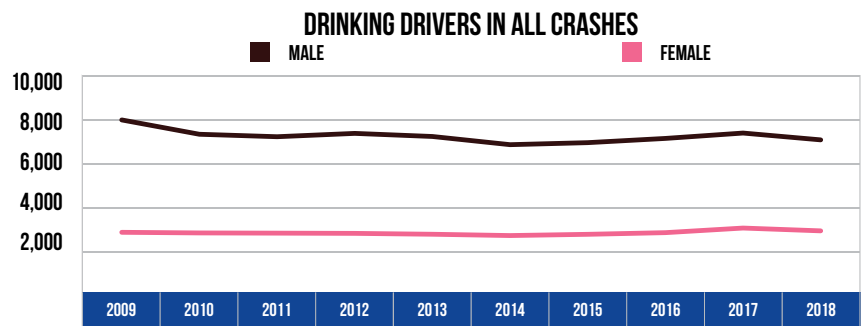
Male drivers accounted for 55.5 percent of all drivers in crashes during 2018, which was up slightly from 54.9 percent in 2009. Female drivers accounted for 44.5 percent of all drivers in crashes during 2018, which was down slightly from 45.1 percent in 2009.

DRIVERS IN FATAL CRASHES		
Year	Male	Female
2009	840	375
2010	916	374
2011	859	351
2012	936	368
2013	990	344
2014	893	315
2015	1,043	380
2016	1,059	445
2017	1,030	446
2018	1,026	426



Male drivers made up 70.7 percent of all drivers in fatal crashes in 2018, which was up from 69.1 percent in 2009. Female drivers made up 29.3 percent of all drivers in fatal crashes in 2018, which was down from 30.9 percent in 2009.

DRINKING DRIVERS IN ALL CRASHES		
Year	Male	Female
2009	7,881	2,613
2010	7,209	2,584
2011	7,094	2,574
2012	7,250	2,563
2013	7,105	2,522
2014	6,721	2,461
2015	6,816	2,519
2016	7,014	2,597
2017	7,266	2,813
2018	6,946	2,681



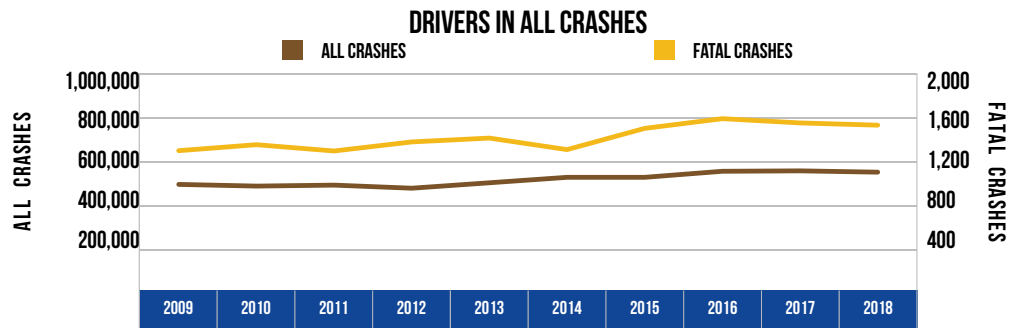
In 2018, males represented 72.2 percent of all drinking drivers, which was down from 75.1 percent in 2009. Females represented 27.8 percent of all drinking drivers in 2018, which was up from 24.9 percent in 2009.

Note: 43,449 drivers in all crashes, 57 drivers in fatal crashes, and one drinking driver were coded as unknown gender in 2018 and are not included in the tables.

10 YEAR TRENDS-STATEWIDE (CONTINUED)

DRIVERS IN ALL CRASHES

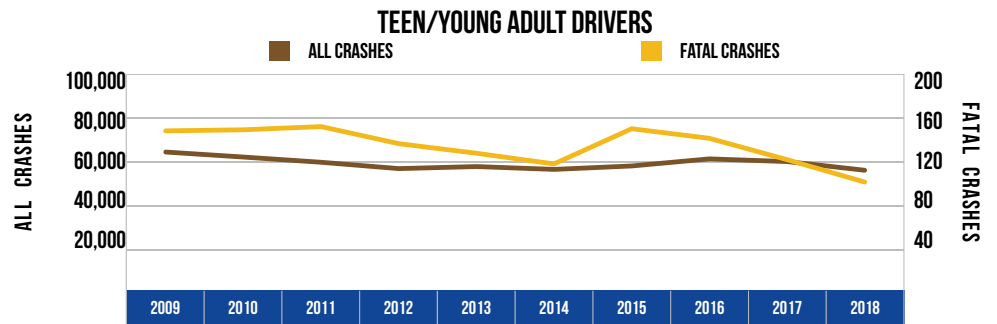
Year	All Crashes	Fatal Crashes
2009	476,801	1,270
2010	468,968	1,326
2011	473,501	1,267
2012	459,030	1,352
2013	484,446	1,388
2014	510,086	1,280
2015	510,074	1,479
2016	538,412	1,570
2017	540,387	1,530
2018	534,223	1,509



The number of drivers involved in all crashes increased 12.0 percent over the 10-year period. The number of drivers involved in fatal crashes increased 18.8 percent over the 10-year period.

TEEN/YOUNG ADULT DRIVERS (AGE 16-20)

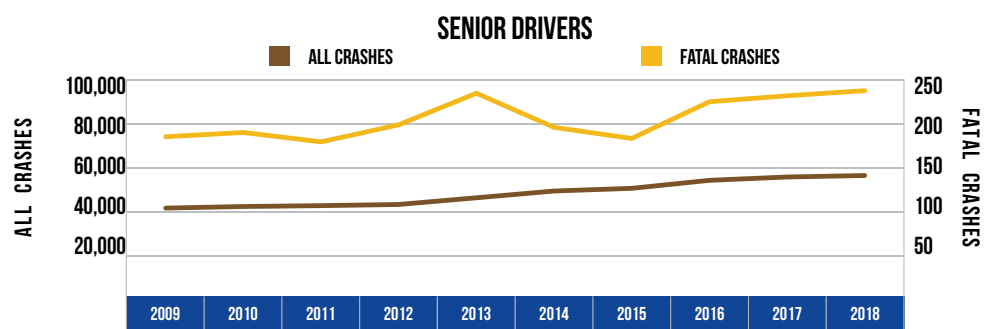
Year	All Crashes	Fatal Crashes
2009	63,069	146
2010	60,721	147
2011	58,279	150
2012	55,307	134
2013	56,264	125
2014	54,935	115
2015	56,544	148
2016	59,865	139
2017	58,607	119
2018	54,530	98



Teen/young adult drivers (age 16-20) represented 6.4 percent of the licensed drivers in 2018. The number of teen/young adult drivers in all crashes has decreased by 13.5 percent since 2009. Their involvement in fatal crashes has decreased 32.9 percent during the same time period.

SENIOR DRIVERS (AGE 65 & OVER)

Year	All Crashes	Fatal Crashes
2009	39,357	182
2010	40,096	187
2011	40,495	176
2012	41,047	196
2013	44,183	233
2014	47,356	193
2015	48,615	180
2016	52,362	223
2017	53,934	230
2018	54,621	236

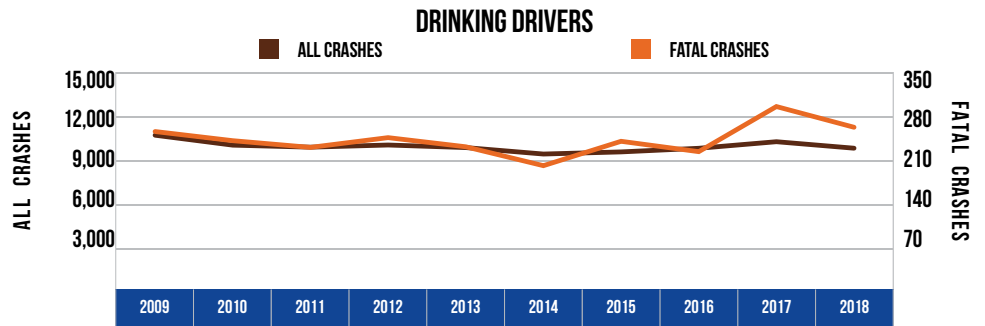


Senior drivers (age 65 and over) represented 21.1 percent of the licensed drivers in 2018. The number of drivers age 65 and over in all crashes has increased 38.8 percent since 2009. Senior driver involvement in fatal crashes increased 29.7 percent during the same time period.

10 YEAR TRENDS-STATEWIDE (CONTINUED)

DRINKING DRIVERS

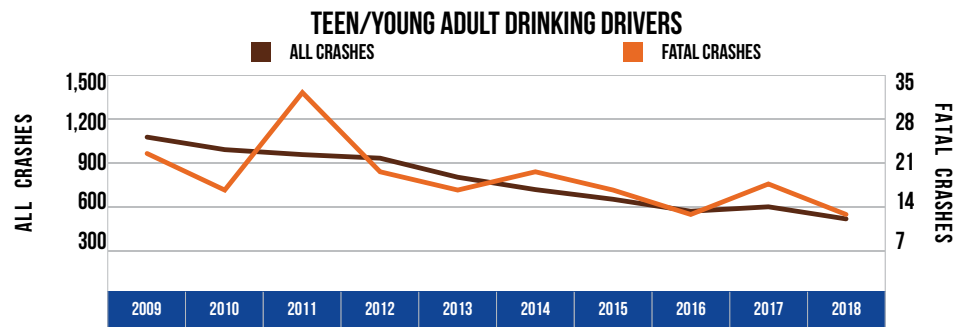
Year	All Crashes	Fatal Crashes
2009	10,542	252
2010	9,843	237
2011	9,701	226
2012	9,853	242
2013	9,673	227
2014	9,218	196
2015	9,368	236
2016	9,623	219
2017	10,085	293
2018	9,628	259



Drinking driver involvement in all crashes decreased by 8.7 percent from 2009. Drinking driver involvement in fatal crashes increased by 2.8 percent from 2009.

TEEN/YOUNG ADULT DRINKING DRIVERS (AGE 16-20)

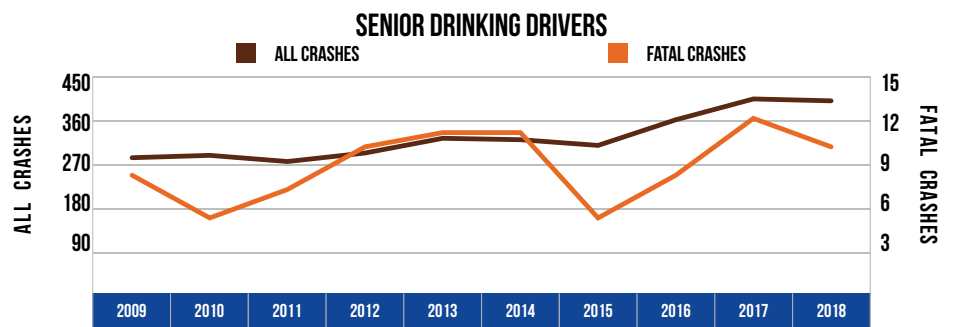
Year	All Crashes	Fatal Crashes
2009	1,058	22
2010	970	16
2011	935	32
2012	910	19
2013	776	16
2014	689	19
2015	621	16
2016	537	12
2017	568	17
2018	483	12



The number of teen/young adult drinking drivers (age 16-20) in all crashes decreased by 54.3 percent, and their involvement in fatal crashes decreased by 45.5 percent from 2009.

SENIOR DRINKING DRIVERS (AGE 65 & OVER)

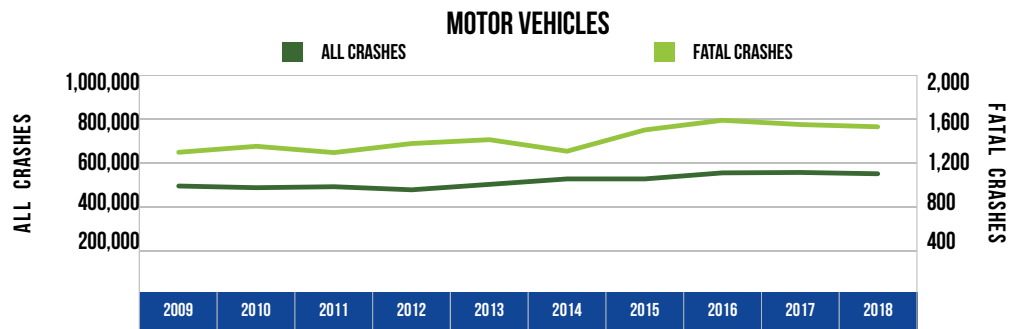
Year	All Crashes	Fatal Crashes
2009	277	8
2010	282	5
2011	269	7
2012	287	10
2013	318	11
2014	315	11
2015	303	5
2016	357	8
2017	401	12
2018	397	10



The number of senior drinking drivers (age 65 and over) in all crashes increased by 43.3 percent from 2009. Their involvement in fatal crashes increased by 25.0 percent from 2009.

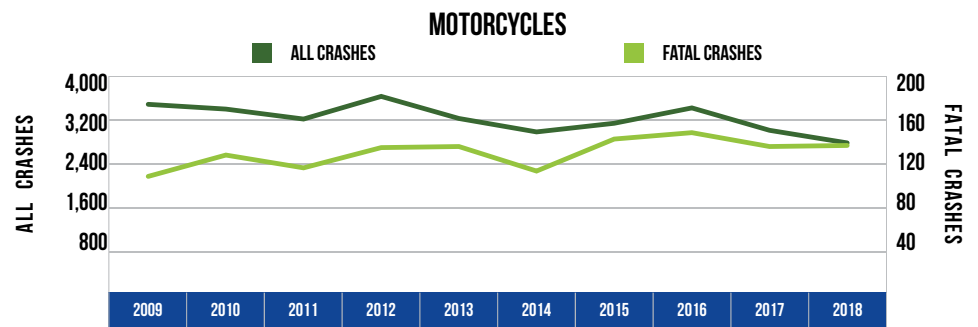
10 YEAR TRENDS-STATEWIDE (CONTINUED)

MOTOR VEHICLES		
Year	All Crashes	Fatal Crashes
2009	476,801	1,270
2010	468,968	1,326
2011	473,501	1,267
2012	459,030	1,352
2013	484,446	1,388
2014	510,086	1,280
2015	510,074	1,479
2016	538,412	1,570
2017	540,387	1,530
2018	534,223	1,509



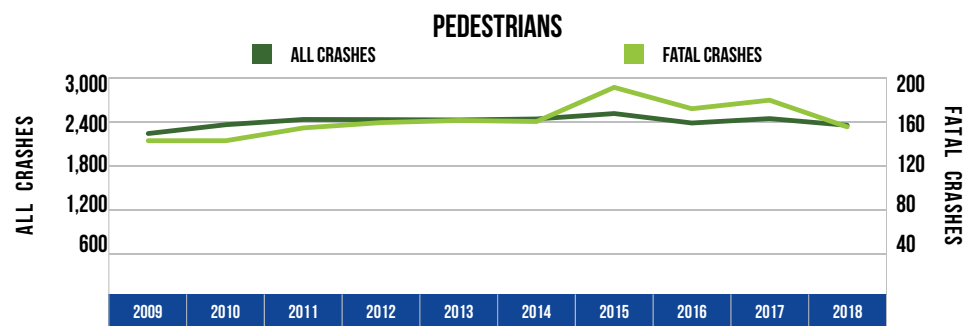
There were 534,223 motor vehicles involved in all crashes in 2018, up 12.0 percent from 2009. There were 1,509 motor vehicles involved in fatal crashes in 2018, up 18.8 percent from 2009.

MOTORCYCLES		
Year	All Crashes	Fatal Crashes
2009	3,451	105
2010	3,362	125
2011	3,175	113
2012	3,600	132
2013	3,186	133
2014	2,934	110
2015	3,096	140
2016	3,384	146
2017	2,964	133
2018	2,728	134



There were 2,728 motorcycles involved in crashes in 2018, a 21.0 percent decrease from 2009. There were 134 motorcycles involved in fatal crashes in 2018, up 27.6 percent from 2009.

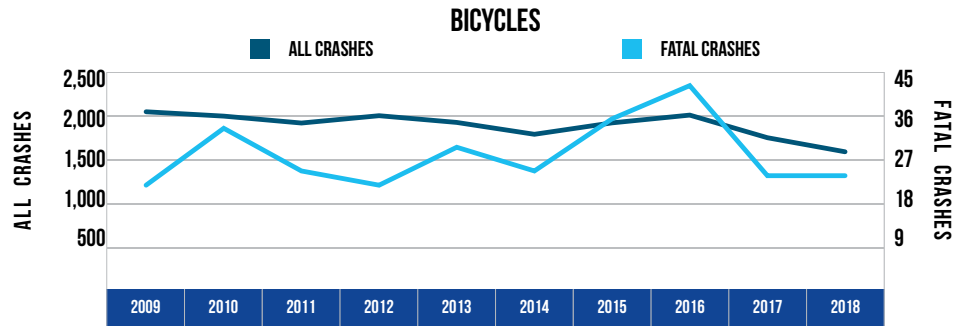
PEDESTRIANS		
Year	All Crashes	Fatal Crashes
2009	2,201	140
2010	2,325	140
2011	2,399	152
2012	2,397	157
2013	2,392	159
2014	2,406	158
2015	2,482	190
2016	2,349	170
2017	2,411	178
2018	2,317	153



There were 2,317 pedestrians involved in crashes in 2018, up 5.3 percent from 2009. There were 153 pedestrians involved in fatal crashes in 2018, up 9.3 percent from 2009.

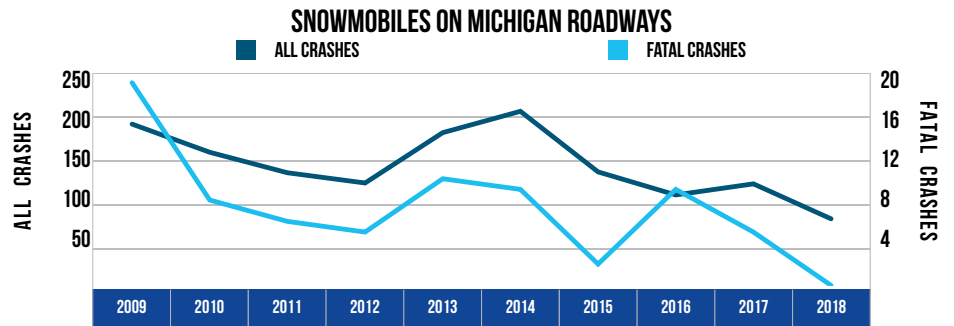
10 YEAR TRENDS-STATEWIDE (CONTINUED)

BICYCLES		
Year	All Crashes	Fatal Crashes
2009	2,027	21
2010	1,976	33
2011	1,895	24
2012	1,981	21
2013	1,902	29
2014	1,763	24
2015	1,897	35
2016	1,988	42
2017	1,723	23
2018	1,558	23



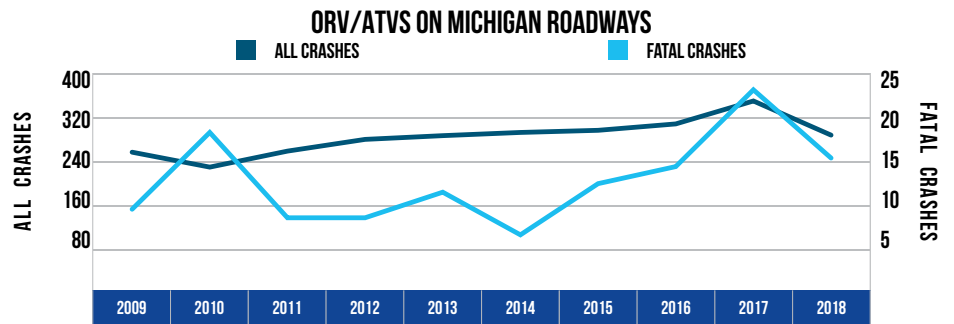
There were 1,558 bicycles involved in crashes in 2018, down 23.1 percent from 2009. There were 23 bicycles involved in fatal crashes in 2018, up 9.5 percent from 2009.

SNOWMOBILES ON MICHIGAN ROADWAYS		
Year	All Crashes	Fatal Crashes
2009	189	19
2010	156	8
2011	132	6
2012	120	5
2013	179	10
2014	204	9
2015	133	2
2016	106	9
2017	119	5
2018	78	0



There were 78 snowmobiles in crashes on roadways in 2018, down 58.7 percent from 2009. There were no snowmobiles in fatal crashes, down from 19 in 2009.

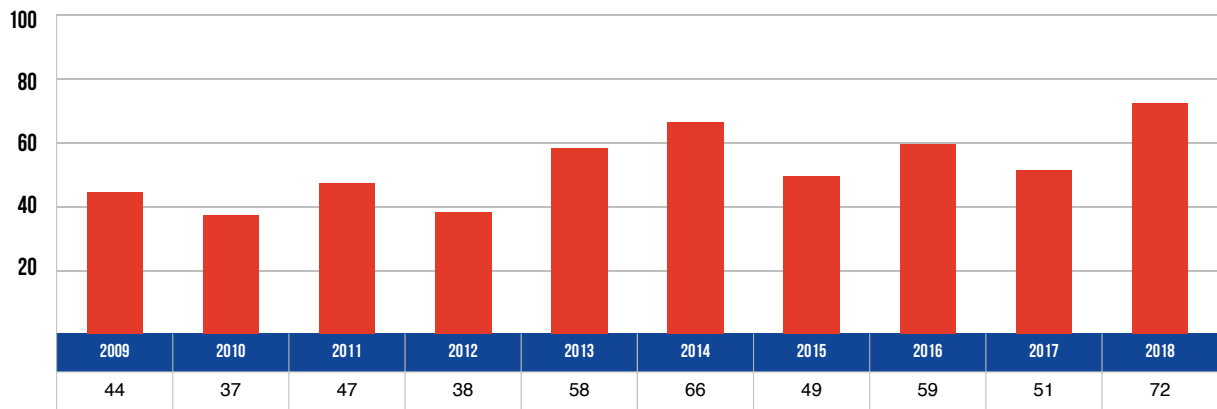
ORV/ATVS ON MICHIGAN ROADWAYS		
Year	All Crashes	Fatal Crashes
2009	251	9
2010	223	18
2011	253	8
2012	275	8
2013	282	11
2014	288	6
2015	292	12
2016	304	14
2017	347	23
2018	283	15



There were 283 ORV/ATVs in crashes on roadways in 2018, up 12.7 percent from 2009. There were 15 ORV/ATVs in fatal crashes, up 66.7 percent from 2009.

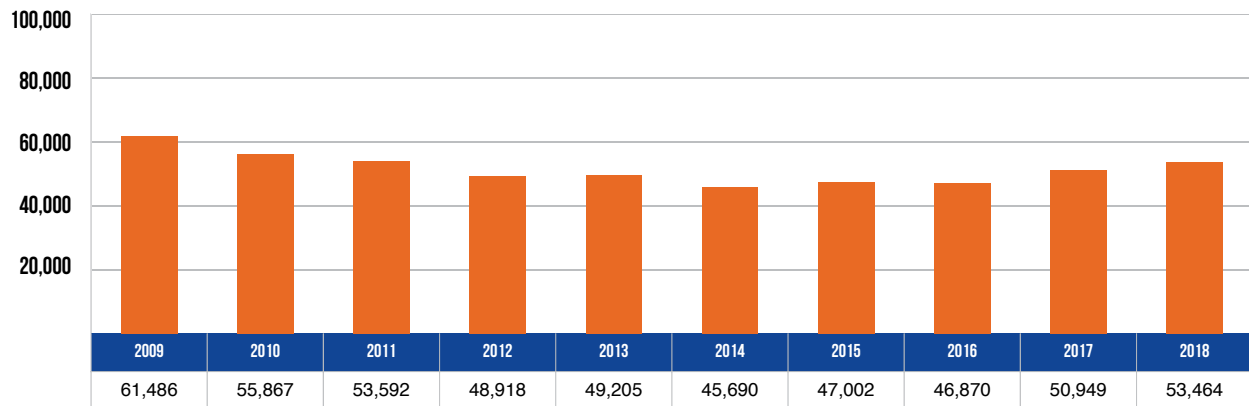
10 YEAR TRENDS-STATEWIDE (CONTINUED)

VEHICLE-TRAIN CRASHES



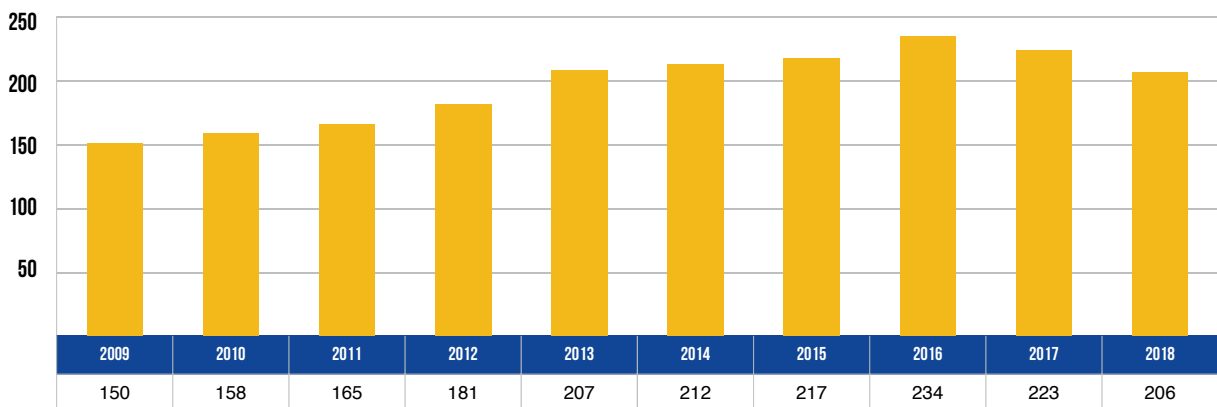
There were 72 vehicle-train crashes in 2018 - an increase of 63.6 percent in the 10-year period.

VEHICLE-DEER CRASHES



There were 53,464 vehicle-deer crashes in 2018 - a decrease of 13.0 percent in the 10-year period.

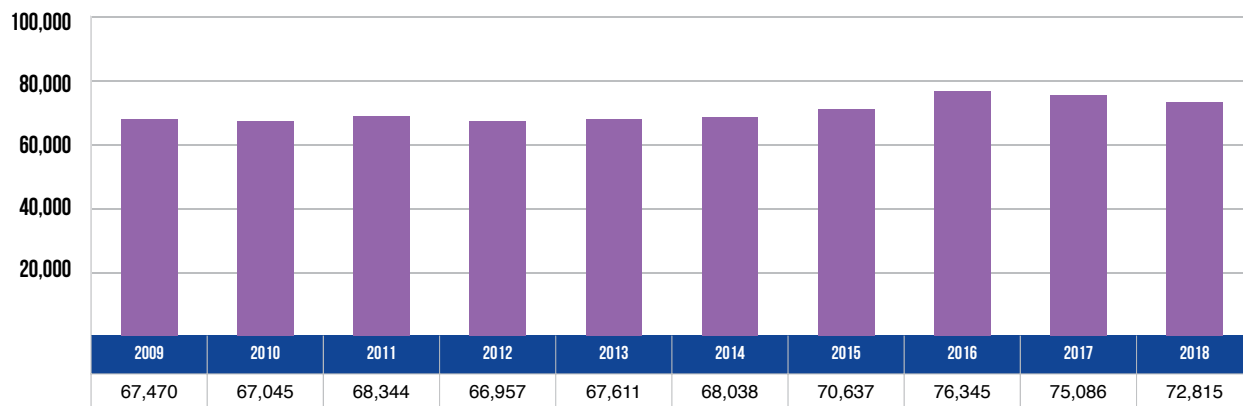
FARM EQUIPMENT CRASHES



There were 206 farm equipment crashes in 2018 - an increase of 37.3 percent from 2009.

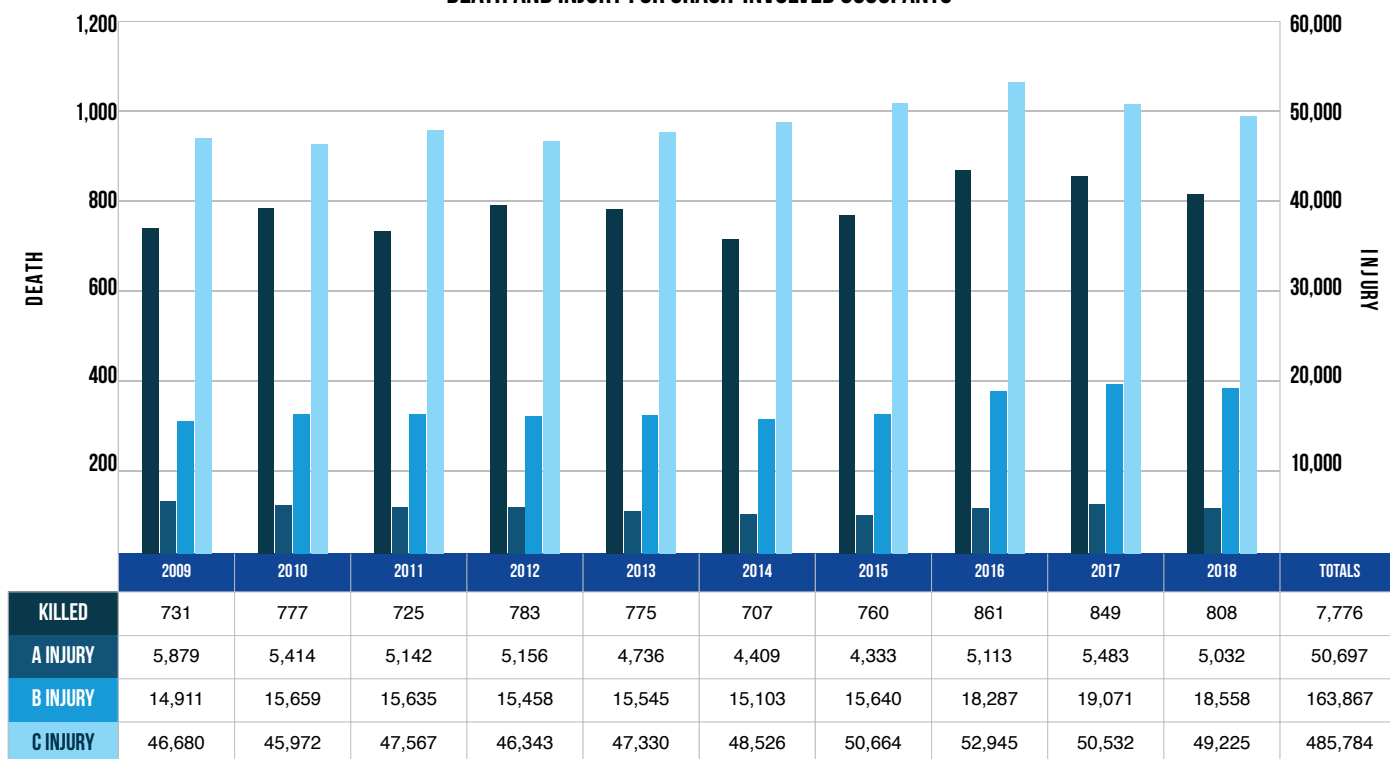
10 YEAR TRENDS-STATEWIDE (CONTINUED)

INJURED OCCUPANTS IN CRASHES



There were 72,815 occupants injured in crashes in 2018 - an increase of 7.9 percent from 2009.

DEATH AND INJURY FOR CRASH-INVOLVED OCCUPANTS

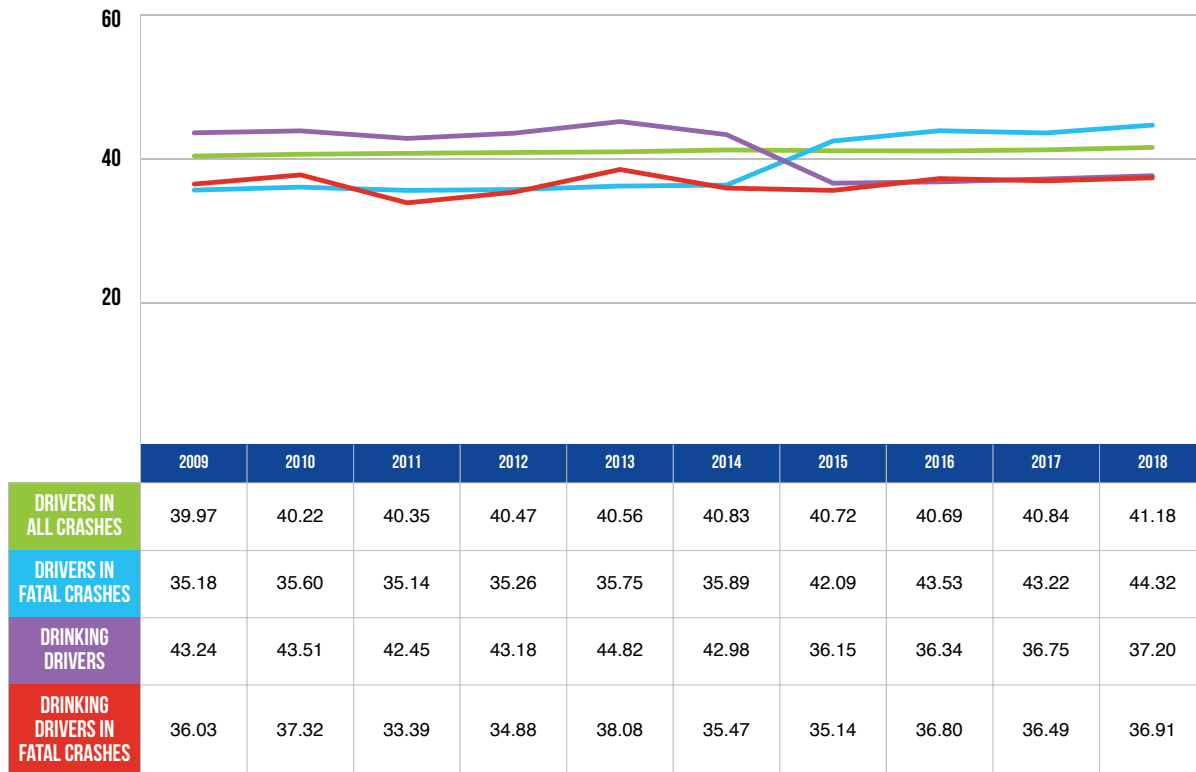


Over the period from 2009 to 2018, occupant deaths increased 10.5 percent, A injuries decreased 14.4 percent, B injuries increased 24.5 percent, and C injuries increased 5.5 percent.

Note: These figures contain the number of occupants recorded as injured by the police officer on the UD-10.

10 YEAR TRENDS-STATEWIDE (CONTINUED)

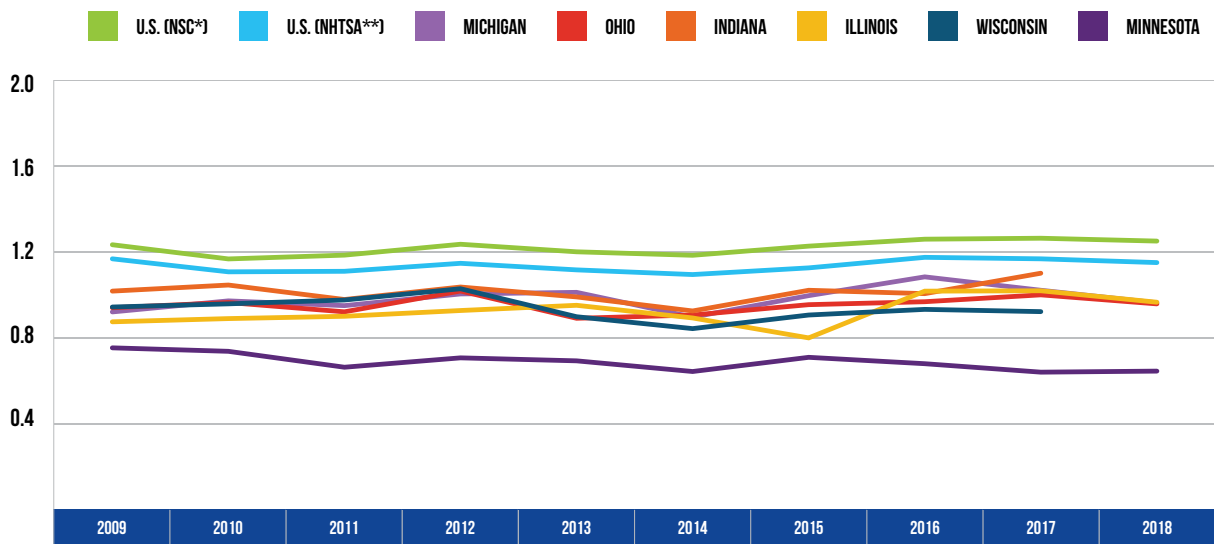
AVERAGE AGE OF DRIVERS IN CRASHES 2009 - 2018



Over the 10-year period, reflecting the demographic trend of increasing age in the general population, the average age of drivers involved in all crashes has increased three percent. The age of drivers involved in fatal crashes has increased 26 percent. The average age of drinking drivers in crashes has decreased 14 percent. The average age of drinking drivers in fatal crashes has increased 2.4 percent.

10 YEAR TRENDS-STATEWIDE (CONTINUED)

FATALITIES PER 100 MILLION VMT 2009 - 2018



YEAR	U.S. (NSC*)	U.S. (NHTSA**)	MICHIGAN	OHIO	INDIANA	ILLINOIS	WISCONSIN	MINNESOTA
2009	1.2	1.2	0.9	0.9	1.0	0.9	0.9	0.7
2010	1.2	1.1	1.0	1.0	1.0	0.9	0.9	0.7
2011	1.2	1.1	0.9	0.9	1.0	0.9	1.0	0.6
2012	1.2	1.1	1.0	1.0	1.0	0.9	1.0	0.7
2013	1.2	1.1	1.0	0.9	1.0	0.9	0.9	0.7
2014	1.2	1.1	0.9	0.9	0.9	0.9	0.8	0.6
2015	1.2	1.1	1.0	0.9	1.0	0.8	0.9	0.7
2016	1.2	1.2	1.1	1.0	1.0	1.0	0.9	0.7
2017	1.3	1.2	1.0	1.0	1.1	1.0	0.9	0.6
2018	1.2	1.1	1.0	0.9	-	1.0	-	0.6

* National Safety Council (NSC) reports traffic and nontraffic deaths within a year of the crash.

**National Highway Traffic Safety Administration (NHTSA) reports only traffic deaths that occur within 30 days of the accident.

U.S. data for this table and tables on the following page were provided by the National Safety Council [3], the National Highway Traffic Safety Administration [4], and the Federal Highway Administration [5]. State data for this table and tables on the following page were provided by Ohio [6], Indiana [7], Illinois [8], Wisconsin [9], and Minnesota [10].

10 YEAR TRENDS-STATEWIDE (CONTINUED)

YEAR	U.S. (NCS*) FATALITIES	U.S. (NHTSA**) FATALITIES	MICHIGAN FATALITIES	OHIO FATALITIES	INDIANA FATALITIES	ILLINOIS FATALITIES	WISCONSIN FATALITIES	MINNESOTA FATALITIES
2009	35,900	33,963	871	1,028	692	911	542	421
2010	34,700	32,885	937	1,081	754	927	562	411
2011	34,600	32,367	889	1,015	749	918	565	368
2012	36,200	33,561	936	1,122	779	956	601	395
2013	35,369	32,850	951	990	777	991	527	387
2014	35,400	32,675	876	1,008	743	924	498	361
2015	38,300	35,092	963	1,110	829	829	555	411
2016	40,200	37,461	1,064	1,133	821	1,078	588	392
2017	40,231	37,133	1,028	1,179	911	1,090	594	358
2018	40,000	36,750	974	1,068	-	1,031	576	381

YEAR	U.S. (FHWA) VMT	MICHIGAN VMT	OHIO VMT	INDIANA VMT	ILLINOIS VMT	WISCONSIN VMT	MINNESOTA VMT
2009	2,935	95.9	110.8	68.8	105.7	58.2	56.9
2010	3,000	97.6	113.5	72.9	105.7	59.4	56.8
2011	2,946	94.8	111.7	77.5	103.4	58.6	56.7
2012	2,954	94.3	111.5	76.0	104.5	59.1	57.0
2013	2,972	95.1	112.7	79.4	105.5	59.5	57.0
2014	3,016	99.1	112.8	81.4	105.0	60.0	57.4
2015	3,148	97.8	117.8	82.1	105.4	62.1	59.1
2016	3,218	99.2	118.5	82.6	107.2	63.9	58.9
2017	3,209	101.8	119.3	83.6	108.2	65.3	57.2
2018	3,225	102.4	112.9	83.7	108.1	-	60.4

VMT described in billions of miles