



2018

MTCF
Michigan Traffic
Crash Facts

Michigan Traffic Crash Facts

Reporting Criteria

Please pay particular attention to the wording when interpreting the three levels of data gathered for this report.

Crash

The Crash Level analyzes data related to crash events and returns one result per crash.

Examples: Time, weather, and location.

Units

The Units Level analyzes the experience of the units in the crash and returns one result per vehicle, driver, pedestrian, bicyclist, or train.

Examples: Vehicle type, driver condition, and unit events.

People

The People Level analyzes the experience of the people involved in the crash and returns one result per occupant/person/party.

Examples: Age, injury severity, and seat belt or helmet use.

KABCO Injury Indicator:

K = Killed

A = Suspected Serious Injury

B = Suspected Minor Injury

C = Possible Injury

O = No Injury

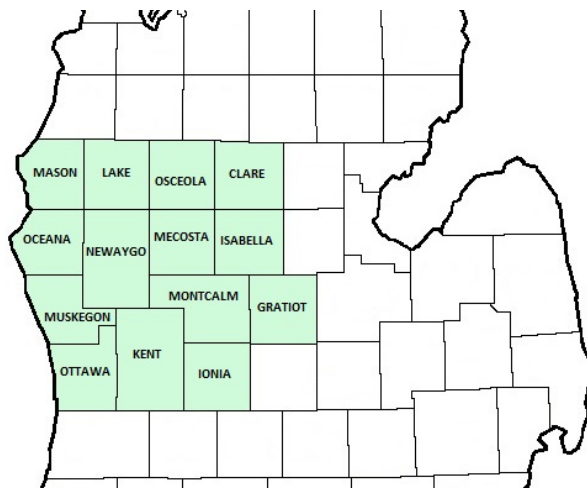
Property Damage Only (PDO)



Michigan State Police (MSP) District 6 - West

2018 Traffic Crash Data & 2014-2018 5-Year Trends

Beginning in 2011, District 6 is comprised of Clare, Gratiot, Ionia, Isabella, Kent, Lake, Mason, Mecosta, Montcalm, Muskegon, Newaygo, Oceana, Osceola, and Ottawa counties. Trend tables for this report are based on those counties.



Sources:

The crashes in this report occurred on public roadways in Michigan and resulted in injuries, fatalities, or property damage (with \$1,000 as a reporting threshold). The information was gathered from Michigan Traffic Crash Report Forms (UD-10) submitted by local police departments, sheriff's offices, and the Michigan State Police. Other related information was obtained from the departments of Transportation, State, and Community Health.

This page left intentionally blank

MSP District 6 - West

- There were 52,058 crashes in District 6 during 2018. [Page 1]
- A total of 171 fatalities resulted from 160 fatal crashes in 2018 in District 6. [Page 1]
- There were 11,641 injuries and 8,536 injury crashes. [Page 1]
- There were 43,362 property damage only crashes (no fatalities or injuries). [Page 1]
- November had the highest number of crashes (5,998). [Pages 1-2]
- August had the highest number of fatal crashes (25) and fatalities (27). [Pages 1-2]
- October had the highest number of injury crashes (806) while August had the highest number of injuries (1,146). [Page 1]
- November had the highest number of property damage only crashes (5,229). [Page 1]
- Of all vehicles involved in fatal crashes, 24 (9.2%) were motorcycles. [Page 1]
- Friday was the day of the week with the highest number of crashes (8,665) and Sunday had the highest number of fatal crashes (38). [Pages 2-3]
- The 3:00 PM - 5:59 PM time period had the highest number of crashes (10,799). This holds true for every year between 2014 and 2018. The Noon - 2:59 PM time period had the highest number of fatal crashes (28). [Pages 5-6]
- During the period from 2014 to 2018, the highest number of deer crashes occurred in 2018 (11,664). The 6:00 AM - 8:59 AM time period had the highest number of deer-involved crashes. There were 4 fatal crashes involving deer in 2018. [Pages 7-8]
- Kent County (42.9%) had the highest number of crashes in District 6 in 2018, followed by Ottawa County (15.3%), and Muskegon County (9.4%). [Page 8]
- Kent County (38.0%) had the highest number of fatalities in District 6 in 2018, followed by Ottawa County (15.2%), and Muskegon County (9.4%). [Page 8]
- The highest number of drivers in crashes (86,228) occurred during 2017 and the highest number of drivers coded drinking in crashes (1,919) occurred during 2017 within the five year period between 2014 and 2018. [Page 9]
- A total of 1,827 crashes involved alcohol in 2018. [Page 11]
- Alcohol-involved fatal crashes were the highest in 2017 during the five-year period from 2014 to 2018 at 60. [Page 11]
- A total of 414 crashes, 32 fatal crashes, and 52 suspected serious injury crashes involved drugs in 2018. [Page 12]
- There were 74,472 drivers wearing seatbelts and 553 drivers not wearing seatbelts in crashes in 2018. Of the 553 drivers not wearing seat belts, 24 (4.3%) were killed and 206 (37.3%) were injured. [Pages 15-17]
- The most common hazardous action coded for drivers in 2018 in all crashes was unable to stop in assured clear distance (10,422), while the most common hazardous action coded for drivers in fatal crashes was speed too fast (33). [Page 18]

MSP District 6 - West (continued)

District 6 Experience

In 2018:

There were 84,444 drivers involved in 52,058 motor vehicle crashes in MSP District 6. Of those crashes, 160 were classified as fatal, resulting in 171 fatalities. An additional 11,641 persons were injured.

District 6 experienced the highest number of motor vehicle crashes (5,998) in November, the highest number of fatal crashes (25) and the highest number of persons killed (27) in August.

Michigan driver statistics indicate 6.8 percent of licensed drivers in District 6 were age 16-20, and 11.5 percent of drivers in crashes were also in that age group.

2018 - Crashes and Injuries by Month

Month	Crashes				Persons	
	Total	Fatal	Injury	Property Damage Only (PDO)	Fatalities	Injuries
January	4,969	12	639	4,318	15	844
February	4,166	9	568	3,589	11	777
March	3,625	6	555	3,064	6	738
April	3,953	13	730	3,210	14	989
May	3,824	15	761	3,048	16	1,050
June	4,042	10	761	3,271	10	1,052
July	3,702	12	740	2,950	12	1,019
August	3,777	25	789	2,963	27	1,146
September	3,974	23	784	3,167	24	1,080
October	5,495	12	806	4,677	12	1,053
November	5,998	10	759	5,229	11	1,013
December	4,533	13	644	3,876	13	880
Total	52,058	160	8,536	43,362	171	11,641

2018 - Driver Statistics

Age Group	District 6			Driver Rates	
	2018 Population	Licensed Drivers	Drivers in Crashes	Per 10k Population	Per 10k Licensed
0 - 15	319,042	8,868	128	4.0	144.3
16 - 20	115,577	75,616	9,671	836.8	1,279.0
21 - 24	95,650	74,024	8,700	909.6	1,175.3
25 - 64	796,726	726,496	51,448	645.7	708.2
65 +	244,353	221,750	8,100	331.5	365.3
Unknown	0	0	6,397	--	--
Total	1,571,348	1,106,754	84,444	537.4	763.0

2018 - Vehicles in Crashes

Vehicle Type	Motor Vehicles		Fatal Crashes		Injury Crashes	PDO Crashes
	Number of Vehicles	% of Total	Number	% of Total	Number	Number
Passenger car, SUV, van	68,911	81.6	180	68.7	12,427	56,304
Motor home	292	0.3	1	0.4	54	237
Pickup truck	9,791	11.6	30	11.5	1,701	8,060
Small truck under 10,000 lbs. GVWR	486	0.6	1	0.4	75	410
Motorcycle	490	0.6	24	9.2	368	98
Moped / goped	80	0.1	1	0.4	60	19
Go-cart / golf cart	6	0.0	0	0.0	2	4
Snowmobile	5	0.0	0	0.0	4	1
Off-Road Vehicle - ORV / All-Terrain Vehicle - ATV	51	0.1	3	1.1	40	8
Other	342	0.4	1	0.4	52	289
Truck/bus over 10,000 lbs.	2,287	2.7	19	7.3	397	1,871
Unknown	1,703	2.0	2	0.8	123	1,578
Total	84,444	100.0	262	100.0	15,303	68,879

5-Year Trend - Crashes by Month

Month	2014		2015		2016		2017		2018	
	Total Crashes	Fatal Crashes	Total Crashes	Fatal Crashes	Total Crashes	Fatal Crashes	Total Crashes	Fatal Crashes	Total Crashes	Fatal Crashes
January	6,393	2	5,049	14	4,968	8	4,813	10	4,969	12
February	5,108	12	4,572	5	3,944	10	3,410	12	4,166	9
March	3,771	11	3,247	6	3,767	6	3,904	16	3,625	6
April	2,605	9	2,890	6	3,421	12	3,349	12	3,953	13
May	3,328	13	3,656	16	3,994	11	3,990	12	3,824	15
June	3,443	10	3,664	13	3,948	14	4,206	16	4,042	10
July	3,130	22	3,600	12	3,613	14	3,770	12	3,702	12
August	3,219	16	3,236	28	3,923	14	3,692	18	3,777	25
September	3,404	14	3,603	13	4,155	18	3,993	20	3,974	23
October	4,655	12	4,982	13	5,019	14	5,582	17	5,495	12
November	6,478	8	5,101	15	5,477	14	5,196	20	5,998	10
December	3,771	8	4,201	12	6,145	9	6,983	11	4,533	13
Total	49,305	137	47,801	153	52,374	144	52,888	176	52,058	160

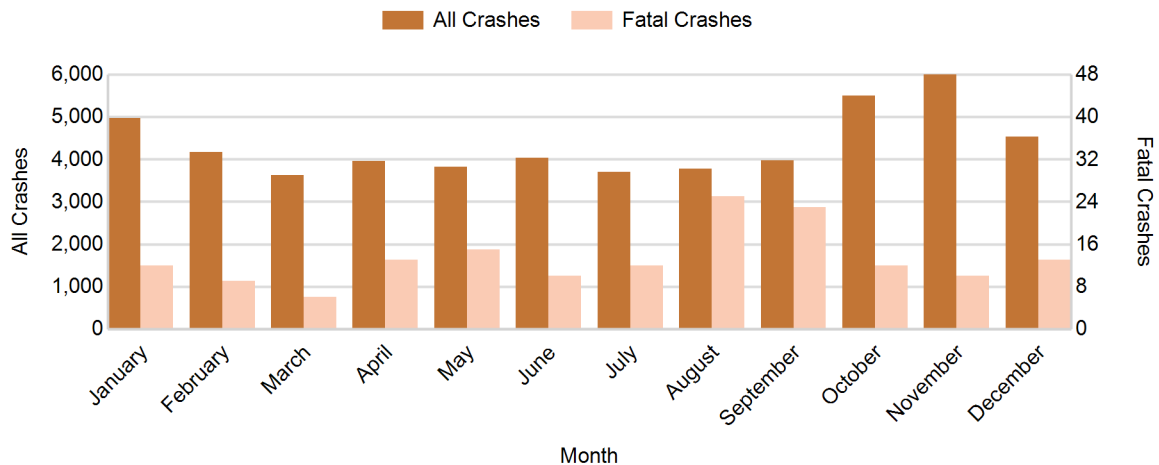
Note: † Indicates that the highest number of total crashes reported in the 5-year period occurred in the same month

5-Year Trend - Crashes by Day of Week

Day	2014		2015		2016		2017		2018	
	Total Crashes	Fatal Crashes	Total Crashes	Fatal Crashes	Total Crashes	Fatal Crashes	Total Crashes	Fatal Crashes	Total Crashes	Fatal Crashes
Monday	6,984	15	6,975	20	7,314	23	7,587	16	7,832	19
Tuesday	7,337	12	7,111	17	7,820	20	7,762	21	8,048	19
Wednesday	7,873	18	7,357	21	8,165	18	7,989	31	8,007	24
Thursday	7,840	20	7,236	18	8,207	21	8,174	32	7,504	14
Friday	8,331 †	21	7,794 †	23	8,916 †	22	8,971 †	25	8,665 †	22
Saturday	6,032	24	6,446	26	6,633	23	7,013	30	6,721	24
Sunday	4,908	27	4,882	28	5,319	17	5,392	21	5,281	38
Total	49,305	137	47,801	153	52,374	144	52,888	176	52,058	160

Note: † Indicates that the highest number of total crashes reported in the 5-year period occurred on the same day of the week

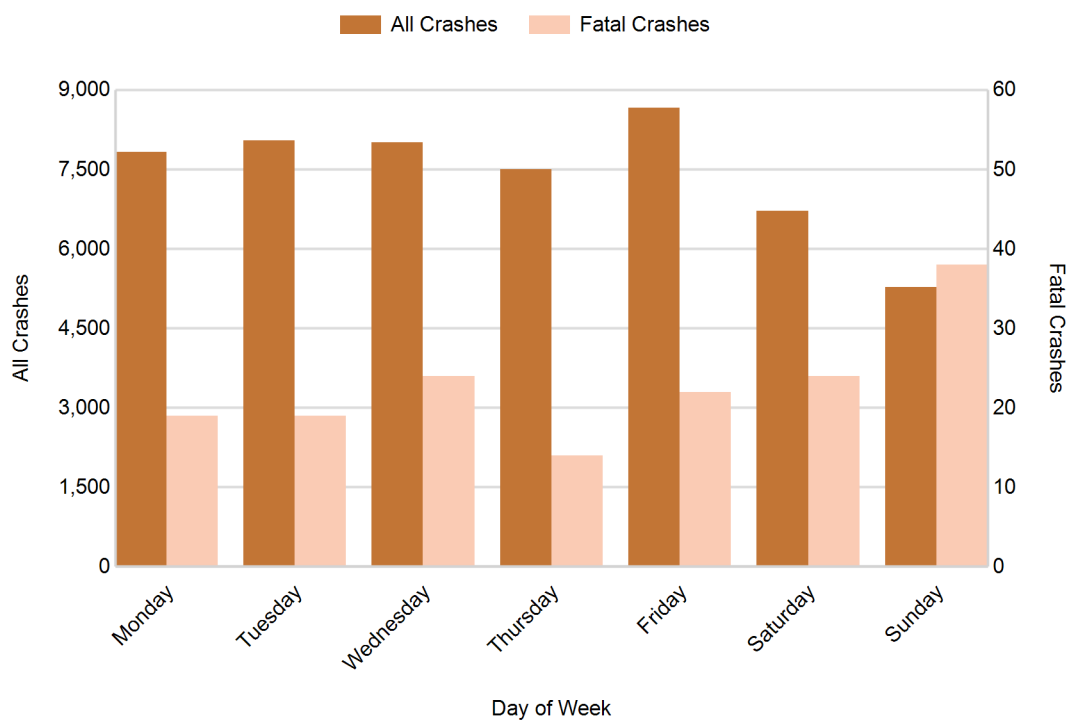
2018 Crashes by Month



2018 - Crashes by Day of Week

Day	All Crashes		Fatal Crashes		Injury Crashes			PDO Crashes
	Number	% of Total	Number	% of Fatal	A	B	C	Number
Monday	7,832	15.0	19	11.9	118	329	832	6,534
Tuesday	8,048	15.5	19	11.9	151	315	896	6,667
Wednesday	8,007	15.4	24	15.0	124	316	766	6,777
Thursday	7,504	14.4	14	8.8	130	333	724	6,303
Friday	8,665	16.6	22	13.8	154	424	862	7,203
Saturday	6,721	12.9	24	15.0	145	335	707	5,510
Sunday	5,281	10.1	38	23.8	101	300	474	4,368
Total	52,058	100.0	160	100.0	923	2,352	5,261	43,362

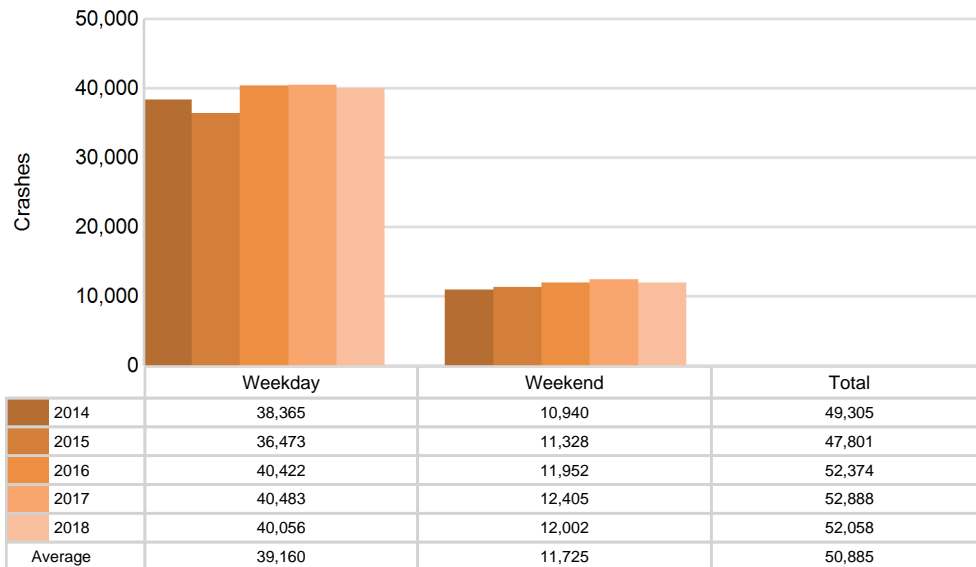
2018 Day of Week and Severity



5-Year Trend - Crashes by Weekday and Weekend

Portion of Week	2014		2015		2016		2017		2018	
	Total Crashes	Fatal Crashes	Total Crashes	Fatal Crashes	Total Crashes	Fatal Crashes	Total Crashes	Fatal Crashes	Total Crashes	Fatal Crashes
Weekday	38,365	86	36,473	99	40,422	104	40,483	125	40,056	98
Weekend	10,940	51	11,328	54	11,952	40	12,405	51	12,002	62
Total	49,305	137	47,801	153	52,374	144	52,888	176	52,058	160

5-Year Crash Trends by Weekday (Monday - Friday) and Weekend (Saturday & Sunday)

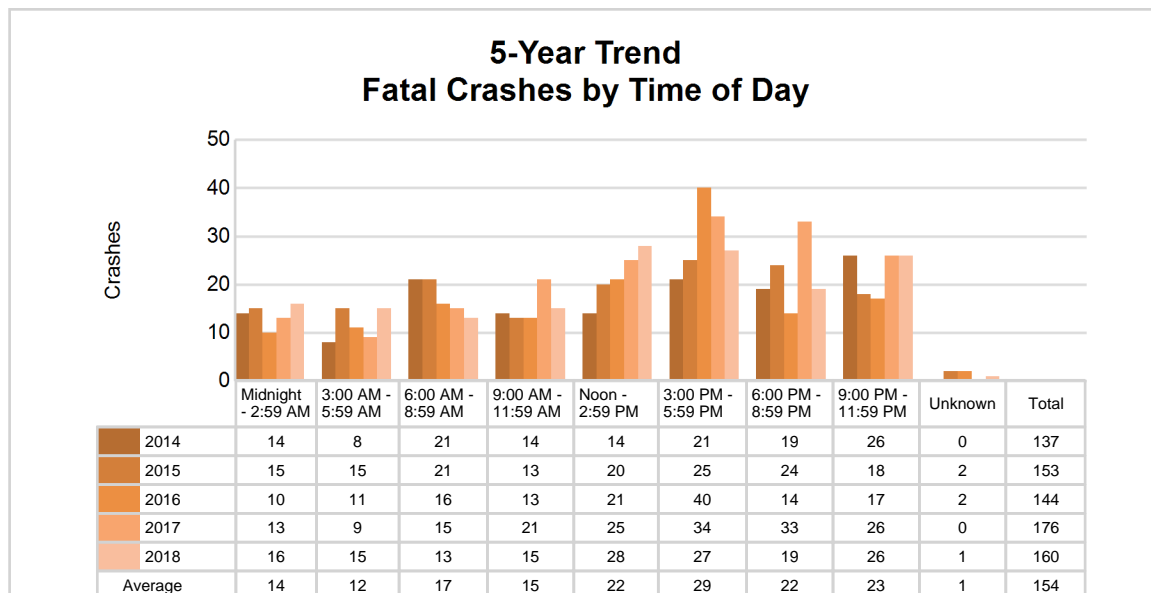
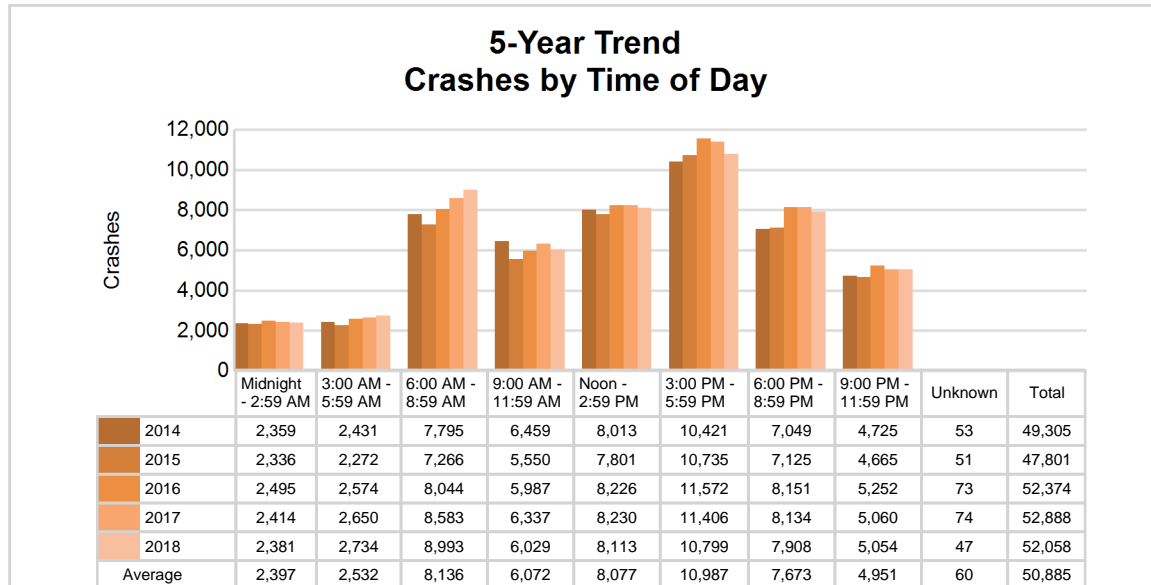


MSP District 6 - West (continued)

5-Year Trend - Crashes by Time of Day

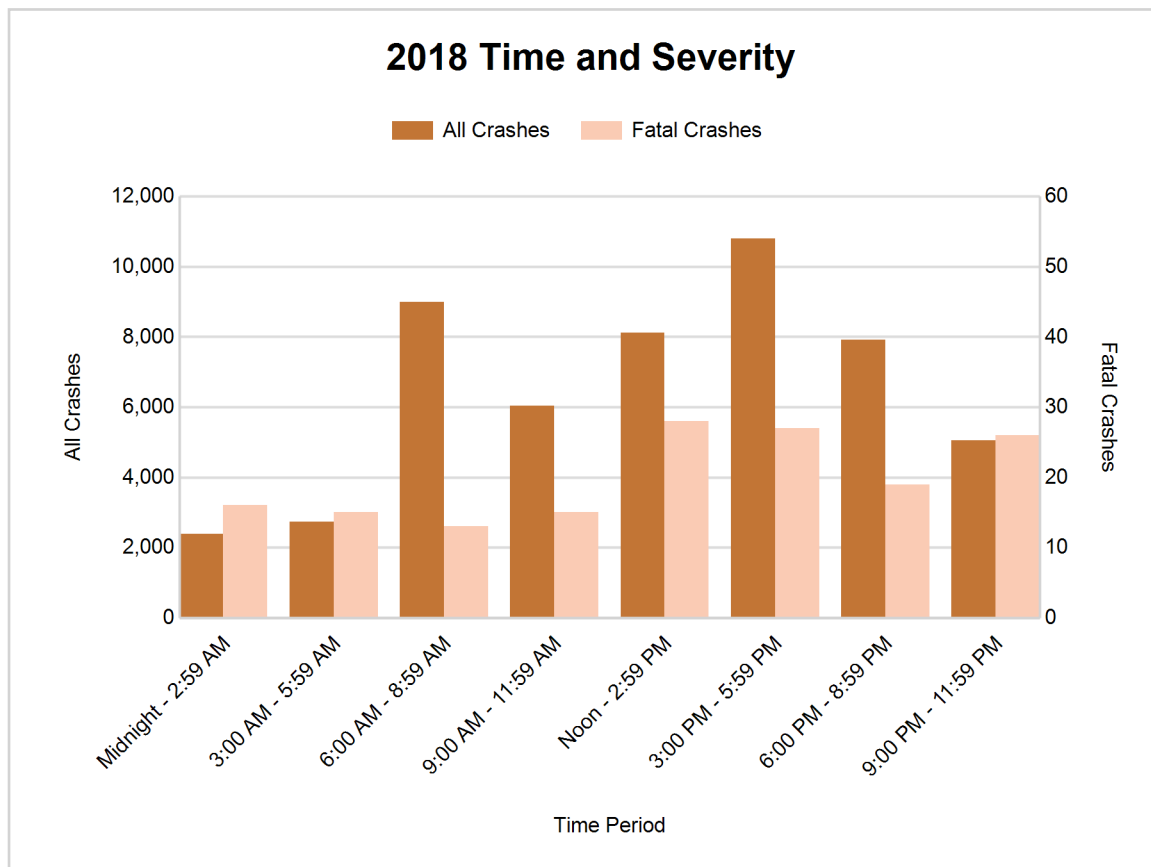
Time of Day	2014		2015		2016		2017		2018	
	Total Crashes	Fatal Crashes	Total Crashes	Fatal Crashes	Total Crashes	Fatal Crashes	Total Crashes	Fatal Crashes	Total Crashes	Fatal Crashes
Midnight - 2:59 AM	2,359	14	2,336	15	2,495	10	2,414	13	2,381	16
3:00 AM - 5:59 AM	2,431	8	2,272	15	2,574	11	2,650	9	2,734	15
6:00 AM - 8:59 AM	7,795	21	7,266	21	8,044	16	8,583	15	8,993	13
9:00 AM - 11:59 AM	6,459	14	5,550	13	5,987	13	6,337	21	6,029	15
Noon - 2:59 PM	8,013	14	7,801	20	8,226	21	8,230	25	8,113	28
3:00 PM - 5:59 PM	10,421 †	21	10,735 †	25	11,572 †	40	11,406 †	34	10,799 †	27
6:00 PM - 8:59 PM	7,049	19	7,125	24	8,151	14	8,134	33	7,908	19
9:00 PM - 11:59 PM	4,725	26	4,665	18	5,252	17	5,060	26	5,054	26
Unknown	53	0	51	2	73	2	74	0	47	1
Total	49,305	137	47,801	153	52,374	144	52,888	176	52,058	160

Note: † Indicates that the highest number of total crashes reported in the 5-year period occurred in the same time period



2018 - Time and Severity

Time of Day	All Crashes		Fatal Crashes		Injury Crashes			PDO Crashes
	Number	% of Total	Number	% of Fatal	A	B	C	Number
Midnight - 2:59 AM	2,381	4.6	16	10.0	56	138	200	1,971
3:00 AM - 5:59 AM	2,734	5.3	15	9.4	54	115	200	2,350
6:00 AM - 8:59 AM	8,993	17.3	13	8.1	109	275	729	7,867
9:00 AM - 11:59 AM	6,029	11.6	15	9.4	108	258	681	4,967
Noon - 2:59 PM	8,113	15.6	28	17.5	140	448	1,036	6,461
3:00 PM - 5:59 PM	10,799	20.7	27	16.9	199	559	1,342	8,672
6:00 PM - 8:59 PM	7,908	15.2	19	11.9	142	355	662	6,730
9:00 PM - 11:59 PM	5,054	9.7	26	16.3	115	203	410	4,300
Unknown	47	0.1	1	0.6	0	1	1	44
Total	52,058	100.0	160	100.0	923	2,352	5,261	43,362

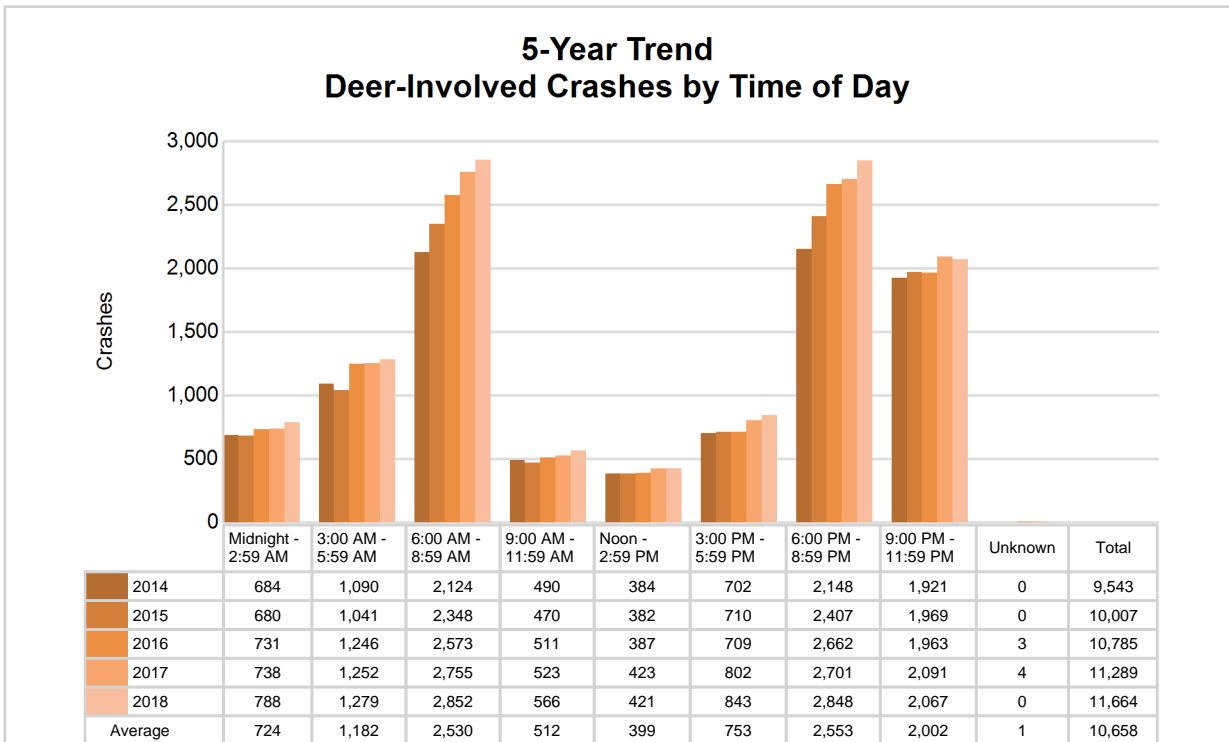


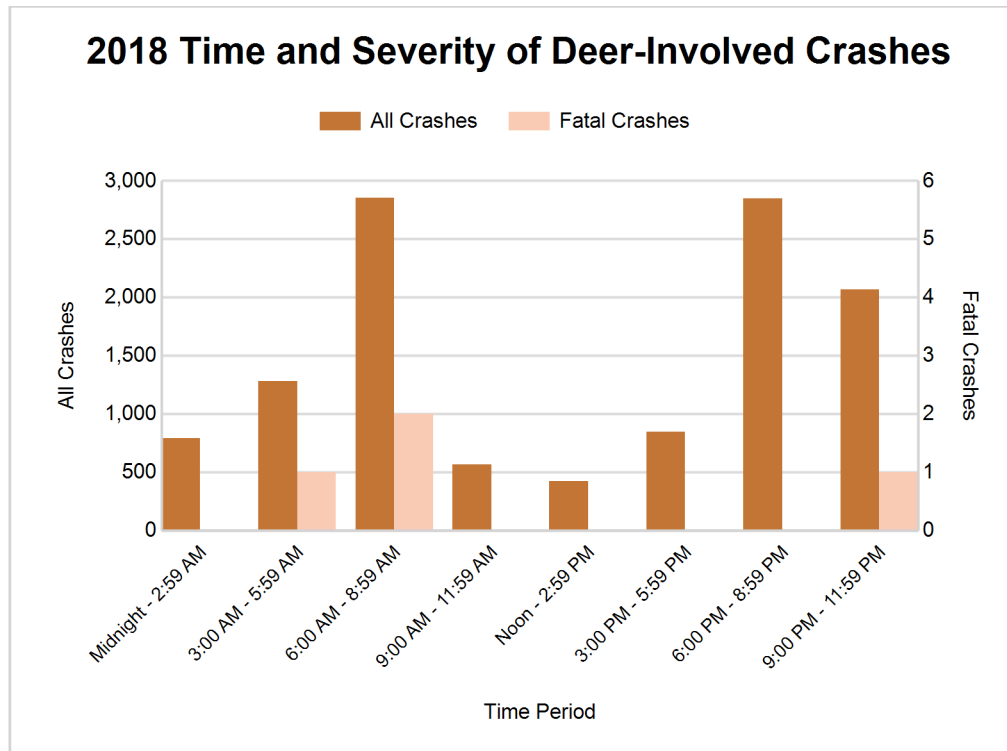
MSP District 6 - West (continued)

5-Year Trend - Deer-Involved Crashes by Time of Day

Time of Day	2014		2015		2016		2017		2018	
	Total Crashes	Fatal Crashes	Total Crashes	Fatal Crashes	Total Crashes	Fatal Crashes	Total Crashes	Fatal Crashes	Total Crashes	Fatal Crashes
Midnight - 2:59 AM	684	0	680	0	731	0	738	0	788	0
3:00 AM - 5:59 AM	1,090	0	1,041	0	1,246	0	1,252	0	1,279	1
6:00 AM - 8:59 AM	2,124	0	2,348	1	2,573	0	2,755	1	2,852	2
9:00 AM - 11:59 AM	490	0	470	0	511	0	523	0	566	0
Noon - 2:59 PM	384	0	382	0	387	1	423	0	421	0
3:00 PM - 5:59 PM	702	1	710	0	709	2	802	1	843	0
6:00 PM - 8:59 PM	2,148	0	2,407	0	2,662	0	2,701	1	2,848	0
9:00 PM - 11:59 PM	1,921	1	1,969	0	1,963	0	2,091	0	2,067	1
Unknown	0	0	0	0	3	0	4	0	0	0
Total	9,543	2	10,007	1	10,785	3	11,289	3	11,664	4

Note: † Indicates that the highest number of total crashes reported in the 5-year period occurred in the same time period





2018 - Reported Motor Vehicle Crashes by County

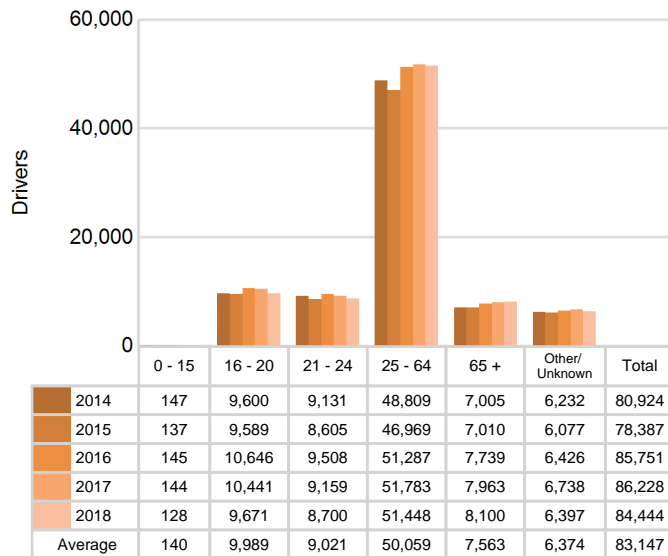
County	Crashes											Persons	
	Total	Fatal	Injury	Property Damage	Inter-state	US Route	State Route	Local Street	Alcohol-Involved	Drug-Involved	Deer-Involved	Fatalities	Injuries
Clare	1,121	8	162	951	0	358	212	550	31	16	516	9	229
Gratiot	1,684	3	163	1,518	0	463	267	953	33	10	944	3	244
Ionia	1,736	5	273	1,458	394	0	543	798	60	24	539	5	363
Isabella	2,712	6	355	2,351	0	655	384	1,667	68	17	1,094	7	519
Kent	22,307	61	4,028	18,218	2,585	2,297	4,572	12,833	855	167	1,837	65	5,453
Lake	445	2	75	368	0	100	76	258	20	3	231	2	99
Mason	1,391	7	139	1,245	0	541	43	807	36	7	746	7	187
Mecosta	1,788	3	216	1,569	0	237	686	865	40	10	875	3	280
Montcalm	2,163	13	343	1,807	0	125	783	1,253	68	12	993	14	498
Muskegon	4,899	16	963	3,920	77	1,022	611	3,185	164	57	613	16	1,319
Newaygo	1,530	9	215	1,306	0	0	518	1,010	66	12	728	9	320
Oceana	1,087	1	164	922	0	235	127	725	42	7	562	1	210
Osceola	1,224	3	141	1,080	0	401	177	646	39	8	719	4	177
Ottawa	7,971	23	1,299	6,649	912	923	850	5,279	305	64	1,267	26	1,743
Total	52,058	160	8,536	43,362	3,968	7,357	9,849	30,829	1,827	414	11,664	171	11,641

MSP District 6 - West (continued)

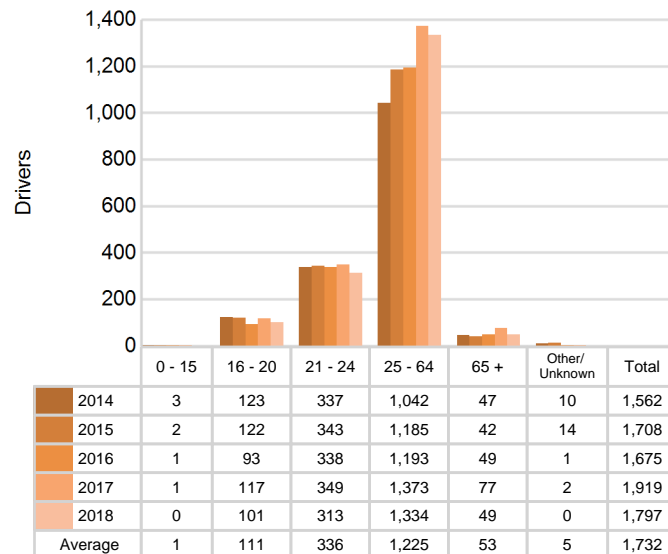
5-Year Trend - Drivers in Crashes Coded Drinking by Driver Age

Driver Age	2014		2015		2016		2017		2018	
	Total Drivers in Crashes	Total Drivers Coded Drinking	Total Drivers in Crashes	Total Drivers Coded Drinking	Total Drivers in Crashes	Total Drivers Coded Drinking	Total Drivers in Crashes	Total Drivers Coded Drinking	Total Drivers in Crashes	Total Drivers Coded Drinking
0 - 15	147	3	137	2	145	1	144	1	128	0
16 - 20	9,600	123	9,589	122	10,646	93	10,441	117	9,671	101
21 - 24	9,131	337	8,605	343	9,508	338	9,159	349	8,700	313
25 - 64	48,809	1,042	46,969	1,185	51,287	1,193	51,783	1,373	51,448	1,334
65 +	7,005	47	7,010	42	7,739	49	7,963	77	8,100	49
Unknown	6,232	10	6,077	14	6,426	1	6,738	2	6,397	0
Total	80,924	1,562	78,387	1,708	85,751	1,675	86,228	1,919	84,444	1,797

5-Year Trend Total Drivers in Crashes by Age



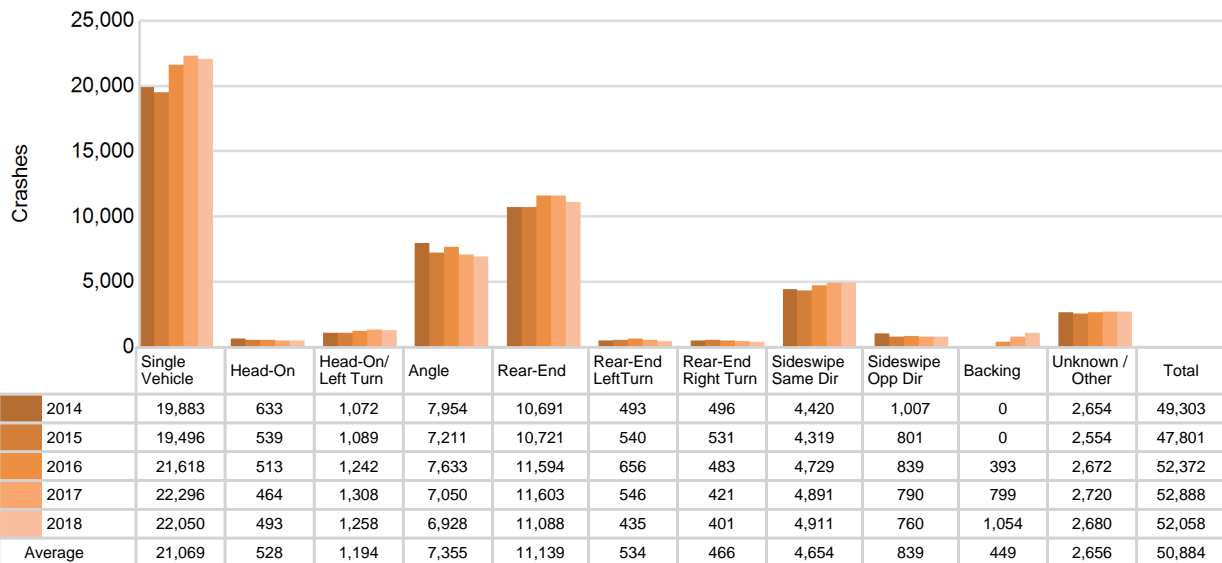
5-Year Trend Total Drivers Coded Drinking by Age



5-Year Trend - Crashes by Crash Type

Crash Type	2014		2015		2016		2017		2018	
	Total Crashes	Fatal Crashes	Total Crashes	Fatal Crashes	Total Crashes	Fatal Crashes	Total Crashes	Fatal Crashes	Total Crashes	Fatal Crashes
Single motor vehicle	19,883	52	19,496	82	21,618	58	22,296	83	22,050	76
Head-on	633	29	539	23	513	18	464	15	493	18
Head-on / left turn	1,072	2	1,089	1	1,242	11	1,308	9	1,258	7
Angle	7,954	36	7,211	28	7,633	45	7,050	38	6,928	33
Rear-end	10,691	4	10,721	7	11,594	5	11,603	14	11,088	14
Rear-end left turn	493	0	540	1	656	2	546	2	435	4
Rear-end right turn	496	0	531	0	483	0	421	0	401	0
Sideswipe same direction	4,420	2	4,319	0	4,729	0	4,891	4	4,911	1
Sideswipe opposite direction	1,007	3	801	1	839	2	790	3	760	0
Backing	0	0	0	0	393	0	799	0	1,054	0
Other / Unknown	2,654	9	2,554	10	2,672	3	2,720	8	2,680	7
Uncoded and Errors	2	0	0	0	2	0	0	0	0	0
Total	49,305	137	47,801	153	52,374	144	52,888	176	52,058	160

5-Year Trend Crashes by Crash Type



2018 - Bodily Alcohol Concentration (BAC) Results Among All Vehicle Drivers in Alcohol-Involved Crashes by Age

Age Group	Drivers				BAC Result Range for Drivers Coded Drinking				
	Total Drivers in Alcohol-Involved Crashes	Total Drivers Tested in all Crashes	Total Drivers Coded Drinking, Tested	Total Drivers Coded Drinking	BAC = 0.00	BAC 0.01 g/dL to 0.07 g/dL	BAC 0.08 g/dL to 0.16 g/dL	BAC 0.17 g/dL and Above	BAC Not Reported
0 - 15	5	0	0	0	0	0	0	0	0
16 - 20	176	133	81	101	0	13	37	16	35
21 - 24	375	315	256	313	1	35	99	82	96
25 - 64	1,760	1,318	1,035	1,334	5	96	330	361	542
65 +	97	76	43	49	0	5	20	13	11
Unknown	242	0	0	0	0	0	0	0	0
Total	2,655	1,842	1,415	1,797	6	149	486	472	684

Notes: BAC measured in grams (g) per deciliter (dL).

BAC may not be reported if drivers are not tested or if the results are not available immediately (as in the case of a blood test).

A driver may be coded by the officer as drinking even though no test is administered.

Alcohol-Involved Crashes

In 2018, there were 2,655 drivers in alcohol-involved crashes; 1,797 (67.7%) of those drivers were coded as had-been-drinking by the officer on the crash form.

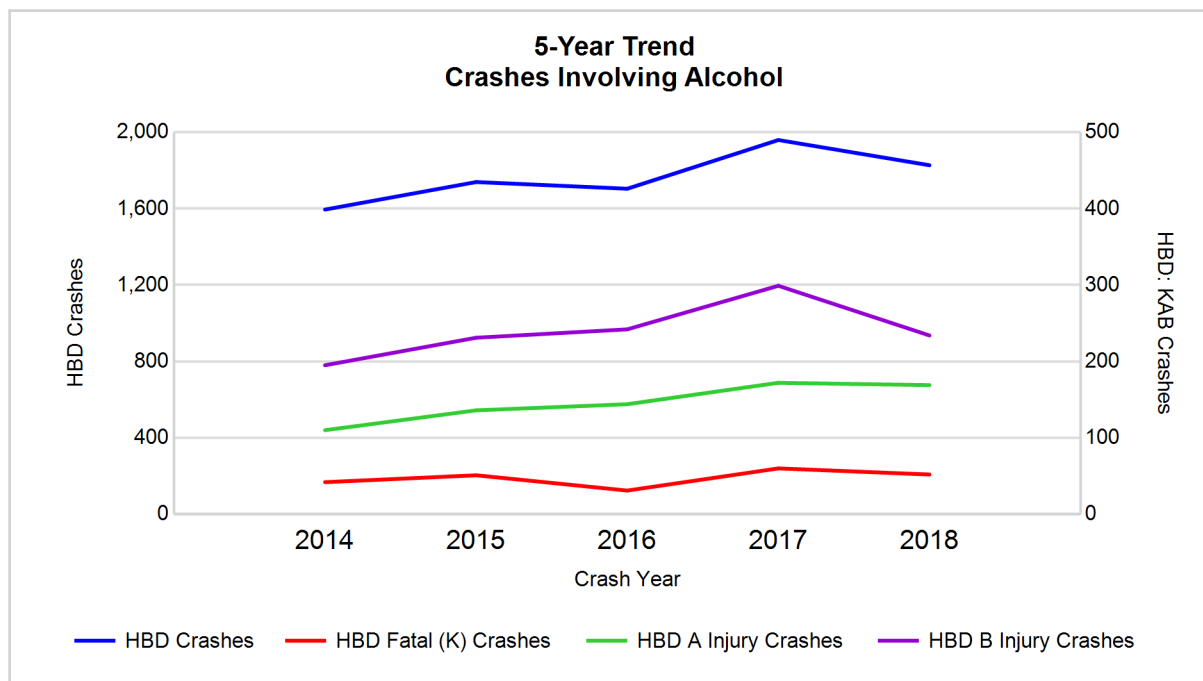
- 958 (53.3%) of the 1,797 drivers had a blood alcohol concentration (BAC) of 0.08 g/dL (grams per deciliter) or greater, and 472 (49.3%) of the 958 drivers had a BAC at or above 0.17 g/dL.
- 1,415 (78.7%) of the 1,797 drivers were coded as had-been-drinking and were tested for alcohol consumption.

5-Year Trend - Crashes Involving Alcohol

Year	All Crashes	HBD Crashes	% HBD	Fatal Crashes	HBD Fatal Crashes	% HBD	A Injury Crashes	HBD A Injury Crashes	% HBD	B Injury Crashes	HBD B Injury Crashes	% HBD
2014	49,305	1,595	3.2	137	42	30.7	705	110	15.6	1,987	195	9.8
2015	47,801	1,739	3.6	153	51	33.3	720	136	18.9	1,960	231	11.8
2016	52,374	1,704	3.3	144	31	21.5	913	144	15.8	2,386	242	10.1
2017	52,888	1,959	3.7	176	60	34.1	954	172	18.0	2,404	299	12.4
2018	52,058	1,827	3.5	160	52	32.5	923	169	18.3	2,352	234	9.9

Note: * Indicates that the most recent year is the lowest number or percentage reported in the 5-year period in that column

** Indicates that the most recent year is the highest number or percentage reported in the 5-year period in that column



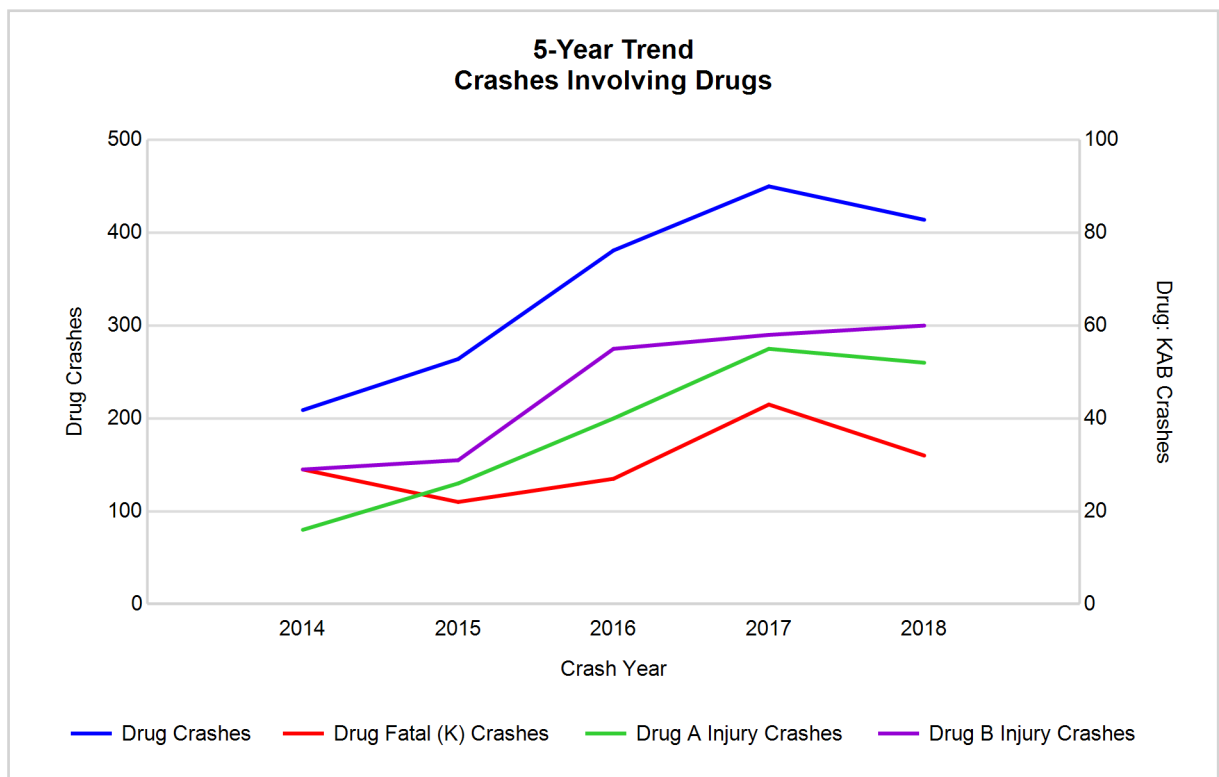
Note: Had-Been-Drinking (HBD)

5-Year Trend - Crashes Involving Drugs

Year	All Crashes	Drug Crashes	% Drug	Fatal Crashes	Drug Fatal Crashes	% Drug	A Injury Crashes	Drug A Injury Crashes	% Drug	B Injury Crashes	Drug B Injury Crashes	% Drug
2014	49,305	209	0.4	137	29	21.2	705	16	2.3	1,987	29	1.5
2015	47,801	264	0.6	153	22	14.4	720	26	3.6	1,960	31	1.6
2016	52,374	381	0.7	144	27	18.8	913	40	4.4	2,386	55	2.3
2017	52,888	450	0.9	176	43	24.4	954	55	5.8	2,404	58	2.4
2018	52,058	414	0.8	160	32	20.0	923	52	5.6	2,352	60**	2.6**

Note: * Indicates that the most recent year is the lowest number or percentage reported in the 5-year period in that column

** Indicates that the most recent year is the highest number or percentage reported in the 5-year period in that column

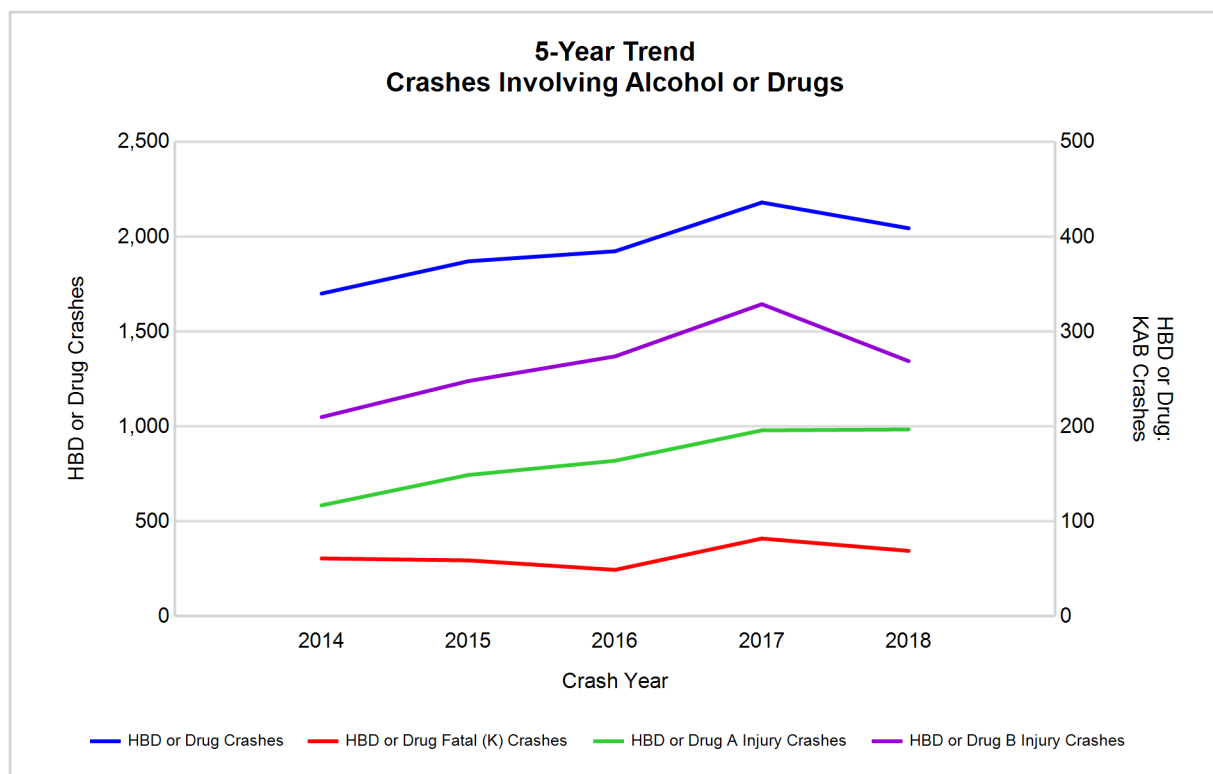


5-Year Trend - Crashes Involving Alcohol or Drugs

Year	All Crashes	HBD or Drug Crashes	% HBD or Drug	Fatal Crashes	HBD or Drug Fatal Crashes	% HBD or Drug	A Injury Crashes	HBD or Drug A Injury Crashes	% HBD or Drug	B Injury Crashes	HBD or Drug B Injury Crashes	% HBD or Drug
2014	49,305	1,701	3.5	137	61	44.5	705	117	16.6	1,987	210	10.6
2015	47,801	1,871	3.9	153	59	38.6	720	149	20.7	1,960	248	12.7
2016	52,374	1,924	3.7	144	49	34.0	913	164	18.0	2,386	274	11.5
2017	52,888	2,181	4.1	176	82	46.6	954	196	20.5	2,404	329	13.7
2018	52,058	2,045	3.9	160	69	43.1	923	197**	21.3**	2,352	269	11.4

Note: * Indicates that the most recent year is the lowest number or percentage reported in the 5-year period in that column

** Indicates that the most recent year is the highest number or percentage reported in the 5-year period in that column



Note: Had-Been-Drinking (HBD)

2018 - Restraints Worn Among Vehicle Drivers and Injured Passengers by Vehicle Type

Vehicle Type	Total Occupants			Fatalities			A - Suspected Serious			B - Suspected Minor			C - Possible Injury			No Injury		
	Total	Used Restraint	%	Total	Used Restraint	%	Total	Used Restraint	%	Total	Used Restraint	%	Total	Used Restraint	%	Total	Used Restraint	%
Passenger car, SUV, van	71,328	64,668	90.7	104	73	70.2	742	591	79.6	2,225	2,026	91.1	6,405	6,156	96.1	57,947	55,819	96.3
Motor home	296	265	89.5	0	0	0.0	1	0	0.0	9	9	100.0	20	18	90.0	250	238	95.2
Pickup truck	10,077	9,186	91.2	13	3	23.1	117	84	71.8	325	284	87.4	644	604	93.8	8,472	8,211	96.9
Small truck under 10,000 lbs. GVWR	498	442	88.8	1	0	0.0	4	4	100.0	14	11	78.6	21	21	100.0	421	406	96.4
Motorcycle	521	352	67.6	25	19	76.0	120	72	60.0	170	117	68.8	90	66	73.3	100	78	78.0
Moped / goped	81	24	29.6	1	0	0.0	8	4	50.0	33	11	33.3	20	6	30.0	14	3	21.4
Go-cart / golf cart	7	2	28.6	0	0	0.0	0	0	0.0	2	0	0.0	0	0	0.0	3	2	66.7
Snowmobile	5	4	80.0	0	0	0.0	1	1	100.0	2	2	100.0	1	1	100.0	1	0	0.0
Off-Road Vehicle - ORV / All-Terrain Vehicle - ATV	61	23	37.7	3	1	33.3	17	7	41.2	17	8	47.1	8	3	37.5	13	4	30.8
Other	348	197	56.6	1	0	0.0	4	2	50.0	9	4	44.4	11	3	27.3	275	188	68.4
Truck/bus over 10,000 lbs.	2,332	2,152	92.3	3	1	33.3	17	12	70.6	27	19	70.4	93	64	68.8	2,110	2,056	97.4
Unknown	1,704	1	0.1	0	0	0.0	0	0	0.0	0	0	0.0	1	0	0.0	26	1	3.8
Total	87,258	77,316	88.6	151	97	64.2	1,031	777	75.4	2,833	2,491	87.9	7,314	6,942	94.9	69,632	67,006	96.2

Note: Restraint Use includes shoulder belt only used, lap belt only used, both lap and shoulder belts used, child restraint used, restraint failure, and helmet worn.

2018 - Restraints Worn Among Vehicle Drivers and Injured Passengers by Age

Age Group	Total Occupants			Fatalities			A - Suspected Serious			B - Suspected Minor			C - Possible Injury			No Injury		
	Total	Used Restraint	%	Total	Used Restraint	%	Total	Used Restraint	%	Total	Used Restraint	%	Total	Used Restraint	%	Total	Used Restraint	%
0 - 15	844	749	88.7	4	2	50.0	39	27	69.2	185	154	83.2	504	476	94.4	109	90	82.6
16 - 20	10,101	9,702	96.0	9	4	44.4	125	84	67.2	407	362	88.9	933	884	94.7	8,615	8,368	97.1
21 - 24	8,933	8,479	94.9	18	11	61.1	99	70	70.7	318	272	85.5	717	672	93.7	7,759	7,454	96.1
25 - 64	52,569	50,228	95.5	88	51	58.0	647	488	75.4	1,553	1,357	87.4	4,326	4,111	95.0	45,800	44,219	96.5
65 +	8,414	8,157	96.9	32	29	90.6	120	108	90.0	369	346	93.8	825	799	96.8	7,055	6,874	97.4
Unknown	6,397	1	0.0	0	0	0.0	1	0	0.0	1	0	0.0	9	0	0.0	294	1	0.3
Total	87,258	77,316	88.6	151	97	64.2	1,031	777	75.4	2,833	2,491	87.9	7,314	6,942	94.9	69,632	67,006	96.2

Note: Restraint Use includes shoulder belt only used, lap belt only used, both lap and shoulder belts used, child restraint used, restraint failure, and helmet worn.

5-Year Trend - Restraint Use Among Drivers

Restraint Use	2014			2015			2016			2017			2018		
	Drivers	Fatal Drivers	Injured Drivers	Drivers	Fatal Drivers	Injured Drivers	Drivers	Fatal Drivers	Injured Drivers	Drivers	Fatal Drivers	Injured Drivers	Drivers	Fatal Drivers	Injured Drivers
No belts available	354	2	44	327	1	29	221	4	22	133	0	22	138	0	21
Shoulder belt only used	131	0	14	190	0	20	335	0	34	351	0	47	343	0	47
Lap belt only used	551	1	60	503	3	40	414	0	46	276	0	38	206	0	31
Both lap & shoulder belts used	70,039	39	6,501	68,155	46	6,401	74,754	46	7,474	74,840	70	7,266	73,889	57	7,409
No belts used	610	28	180	618	22	175	596	20	205	512	25	204	415	24	185
Child restraint used	4	0	0	0	0	0	5	0	1	1	0	0	0	0	0
Child restraint not used, unavailable or improper use	8	0	1	2	0	0	1	0	0	0	0	0	0	0	0
Restraint failure	66	0	9	55	1	4	53	0	8	38	0	8	34	0	2
Restraint use unknown	2,828	8	175	2,370	8	159	6,547	9	250	9,349	15	256	8,788	7	262
Helmet worn	491	8	351	457	8	323	435	8	332	376	14	259	378	17	278
Helmet not worn	212	11	160	219	11	157	278	14	202	214	13	165	197	7	154
Helmet use unknown	45	2	20	28	0	18	37	0	22	29	0	16	19	0	14
Uncoded & errors	5,585	0	4	5,463	0	8	2,075	0	2	109	0	0	37	0	0
Total	80,924	99	7,519	78,387	100	7,334	85,751	101	8,598	86,228	137	8,281	84,444	112	8,403

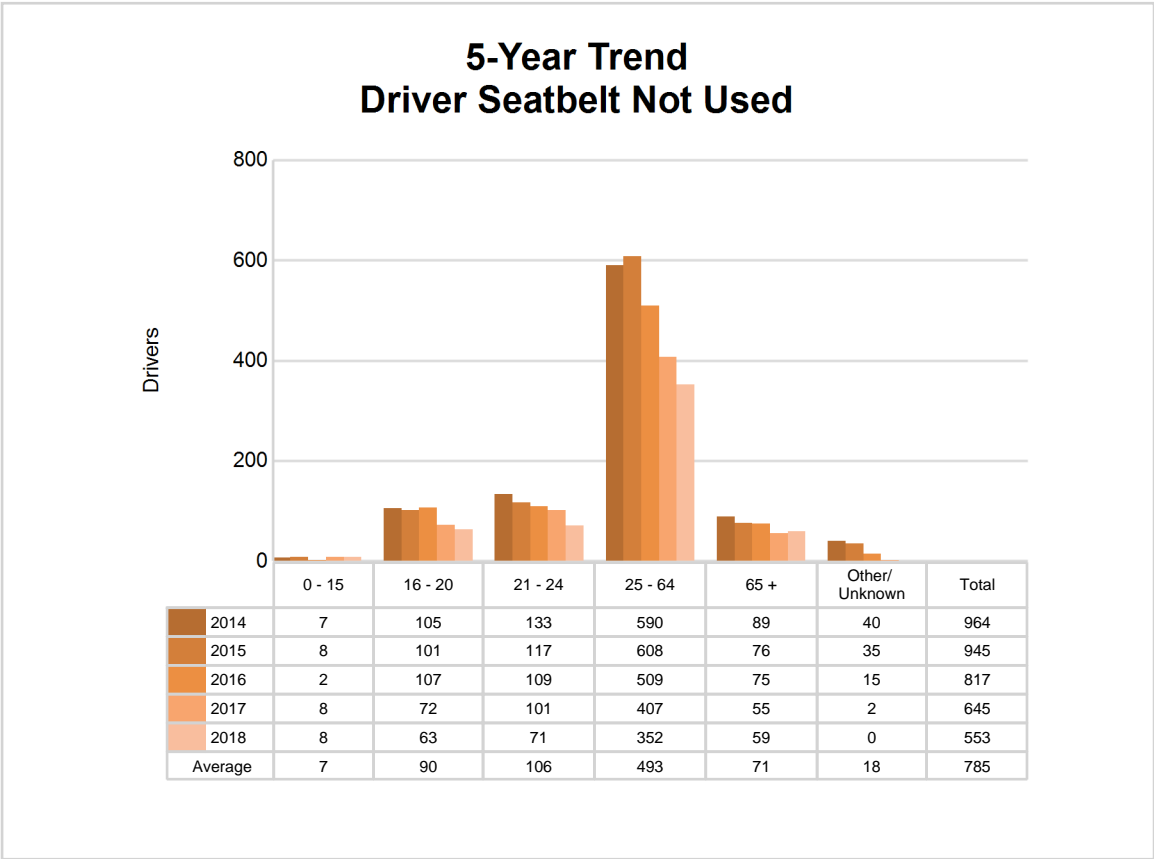
5-Year Trend - Restraint Use Among Drivers Coded Drinking

Restraint Use	2014			2015			2016			2017			2018		
	Drivers	Fatal Drivers	Injured Drivers	Drivers	Fatal Drivers	Injured Drivers	Drivers	Fatal Drivers	Injured Drivers	Drivers	Fatal Drivers	Injured Drivers	Drivers	Fatal Drivers	Injured Drivers
No belts available	16	0	4	10	1	1	8	1	3	7	0	5	1	0	0
Shoulder belt only used	3	0	0	6	0	0	7	0	0	10	0	7	8	0	1
Lap belt only used	10	0	2	14	2	1	9	0	3	3	0	0	2	0	1
Both lap & shoulder belts used	1,125	5	249	1,276	8	316	1,190	2	286	1,376	13	355	1,291	10	339
No belts used	87	9	50	99	10	53	103	6	64	102	14	63	76	13	49
Child restraint used	0	0	0	0	0	0	0	0	0	0	0	0	0	0	0
Child restraint not used, unavailable or improper use	2	0	0	0	0	0	0	0	0	0	0	0	0	0	0
Restraint failure	7	0	1	8	0	0	4	0	2	1	0	0	3	0	0
Restraint use unknown	245	3	58	233	3	56	280	3	74	358	6	73	359	3	86
Helmet worn	17	2	13	19	2	15	20	0	19	20	3	14	27	4	18
Helmet not worn	37	4	29	31	5	23	53	9	40	40	4	34	29	2	27
Helmet use unknown	6	2	3	2	0	2	1	0	1	2	0	2	0	0	0
Uncoded & errors	7	0	0	10	0	0	0	0	0	0	0	0	1	0	0
Total	1,562	25	409	1,708	31	467	1,675	21	492	1,919	40	553	1,797	32	521

5-Year Trend - Seatbelt Not Used Among Drivers by Age

Age Group	2014			2015			2016			2017			2018		
	Drivers	Fatal Drivers	Injured Drivers	Drivers	Fatal Drivers	Injured Drivers	Drivers	Fatal Drivers	Injured Drivers	Drivers	Fatal Drivers	Injured Drivers	Drivers	Fatal Drivers	Injured Drivers
0 - 15	7	1	0	8	0	3	2	0	0	8	0	4	8	0	0
16 - 20	105	3	33	101	1	22	107	3	32	72	3	33	63	2	34
21 - 24	133	3	38	117	3	30	109	3	29	101	6	40	71	3	29
25 - 64	590	18	130	608	16	131	509	11	142	407	15	131	352	18	131
65 +	89	5	23	76	3	17	75	7	24	55	1	18	59	1	12
Unknown	40	0	0	35	0	1	15	0	0	2	0	0	0	0	0
Total	964	30	224	945	23	204	817	24	227	645	25	226	553	24	206

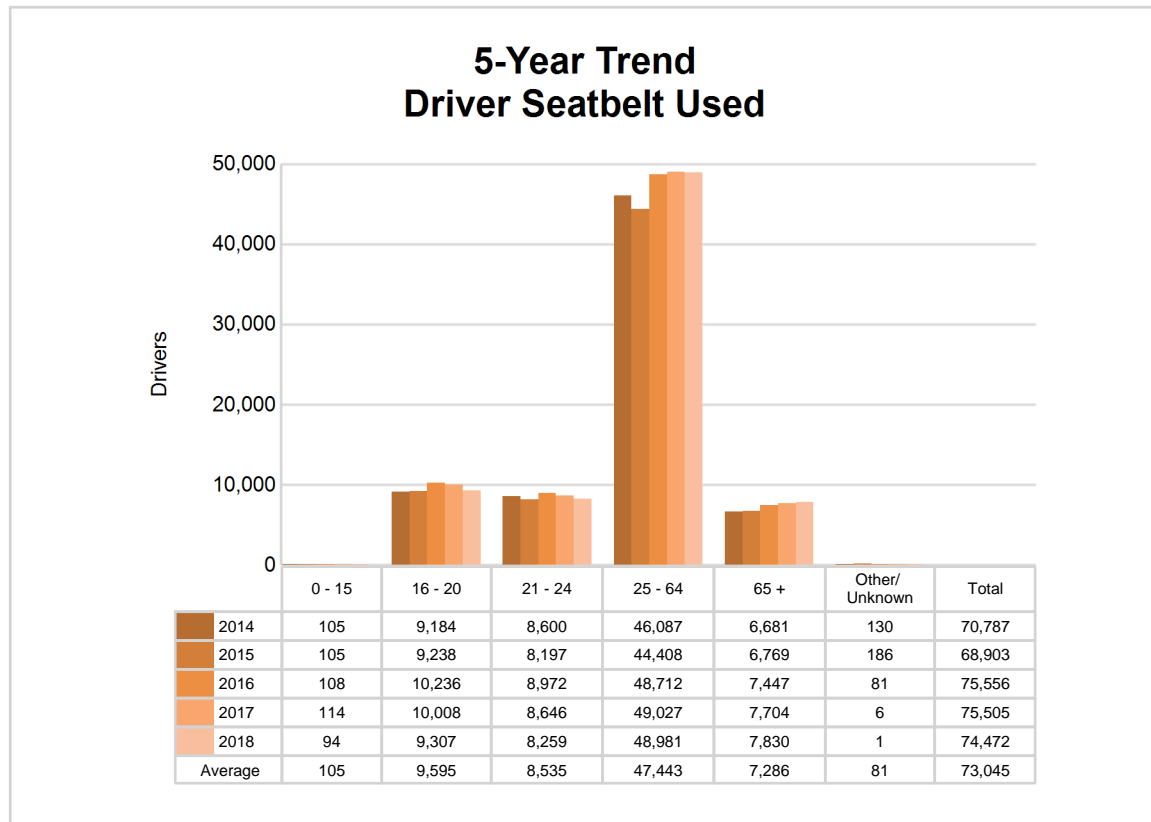
Note: Seatbelt Not Used includes no belts available or no belts used.



5-Year Trend - Seatbelt Used Among Drivers by Age

Age Group	2014			2015			2016			2017			2018		
	Drivers	Fatal Drivers	Injured Drivers	Drivers	Fatal Drivers	Injured Drivers	Drivers	Fatal Drivers	Injured Drivers	Drivers	Fatal Drivers	Injured Drivers	Drivers	Fatal Drivers	Injured Drivers
0 - 15	105	0	6	105	0	11	108	0	12	114	0	12	94	0	4
16 - 20	9,184	4	860	9,238	7	931	10,236	3	1,088	10,008	10	1,044	9,307	3	943
21 - 24	8,600	3	769	8,197	5	717	8,972	6	942	8,646	5	765	8,259	7	804
25 - 64	46,087	16	4,167	44,408	24	4,106	48,712	25	4,699	49,027	31	4,658	48,981	34	4,791
65 +	6,681	17	779	6,769	14	700	7,447	12	820	7,704	24	880	7,830	13	947
Unknown	130	0	3	186	0	0	81	0	1	6	0	0	1	0	0
Total	70,787	40	6,584	68,903	50	6,465	75,556	46	7,562	75,505	70	7,359	74,472	57	7,489

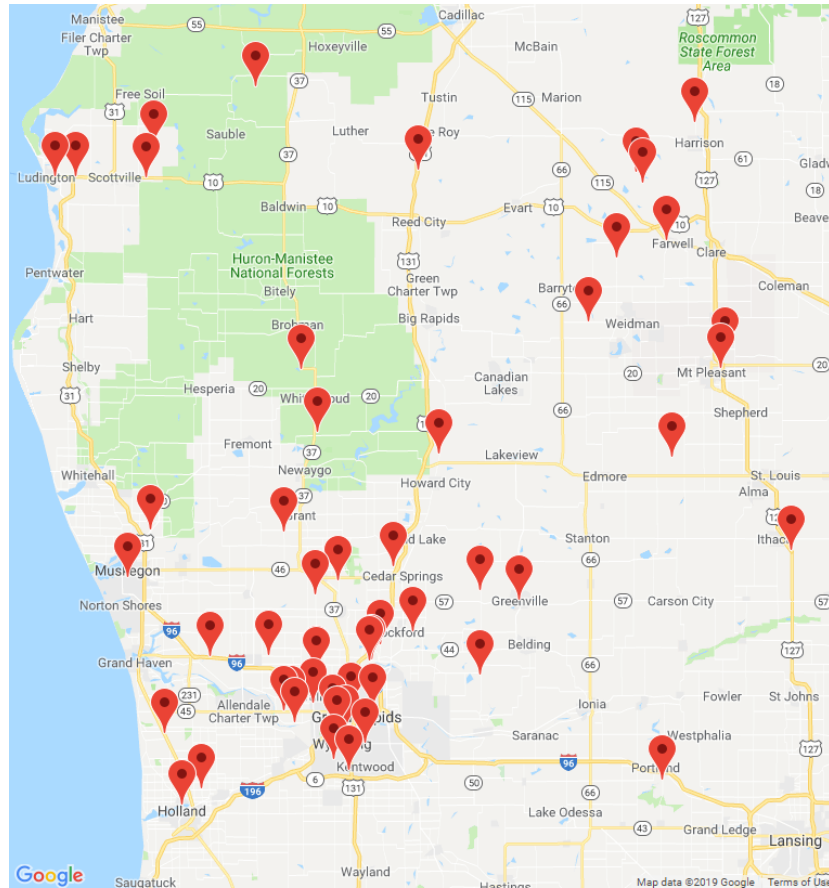
Note: Seatbelt Used includes shoulder belt only used, lap belt only used, both lap and shoulder belts used, and restraint failure.



5-Year Trend - Drivers in Crashes by Hazardous Action

Hazardous Action	2014		2015		2016		2017		2018	
	Total Drivers in Crashes	Drivers in Fatal Crashes	Total Drivers in Crashes	Drivers in Fatal Crashes	Total Drivers in Crashes	Drivers in Fatal Crashes	Total Drivers in Crashes	Drivers in Fatal Crashes	Total Drivers in Crashes	Drivers in Fatal Crashes
None	43,078	104	42,619	105	46,146	119	46,006	135	45,250	113
Speed too fast	7,800	24	5,542	27	6,553	23	6,521	29	6,307	33
Speed too slow	114	0	110	1	91	0	53	2	52	0
Failed to yield	7,214	17	6,983	18	7,629	23	7,489	26	7,523	21
Disregard traffic control	1,586	12	1,707	11	1,766	26	1,661	17	1,670	10
Drove wrong way	66	6	75	1	66	1	54	3	39	0
Drove left of center	374	16	354	12	370	4	368	12	342	6
Improper passing	447	0	372	5	439	2	463	1	430	1
Improper lane use	1,357	3	1,570	1	1,782	5	1,837	3	1,985	2
Improper turn	773	1	733	0	766	1	776	1	757	0
Improper/no signal	176	0	170	1	104	0	77	0	72	0
Improper backing	1,316	0	1,302	0	1,370	0	1,236	0	1,118	0
Unable to stop in assured clear distance	9,706	3	9,811	6	10,915	5	10,944	15	10,422	13
Other	2,717	13	2,544	6	2,668	10	2,725	7	2,542	10
Unknown	2,043	17	2,123	23	2,706	13	3,351	18	3,436	32
Reckless driving	349	4	393	3	385	7	388	11	346	9
Careless/negligent driving	1,749	6	1,963	12	1,950	4	2,024	10	2,128	11
Uncoded & errors	59	0	16	0	45	0	255	0	25	1
Total	80,924	226	78,387	232	85,751	243	86,228	290	84,444	262

MSP District 6 - West (continued)



The picture above represents all 2018 alcohol-involved fatal crashes in District 6.

In 2018, there were 1,827 alcohol-involved crashes in District 6:

52	K - Fatal Crashes
169	A - Suspected Serious Injury Crashes
234	B - Suspected Minor Injury Crashes
289	C - Possible Injury Crashes
1,083	O - Property Damage Only/No Injury Crashes

Office of Highway Safety Planning

Physical Address:

7150 Harris Drive
Dimondale, Michigan 48821

Mailing Address:

P.O. Box 30634
Lansing, Michigan 48909

Phone: (517) 284-3112

Fax: (517) 284-3151

Find us on the web:

MichiganTrafficCrashFacts.org

