



2018

MTCF
Michigan Traffic
Crash Facts

Michigan Traffic Crash Facts

Reporting Criteria

Please pay particular attention to the wording when interpreting the three levels of data gathered for this report.

Crash

The Crash Level analyzes data related to crash events and returns one result per crash.

Examples: Time, weather, and location.

Units

The Units Level analyzes the experience of the units in the crash and returns one result per vehicle, driver, pedestrian, bicyclist, or train.

Examples: Vehicle type, driver condition, and unit events.

People

The People Level analyzes the experience of the people involved in the crash and returns one result per occupant/person/party.

Examples: Age, injury severity, and seat belt or helmet use.

KABCO Injury Indicator:

K = Killed

A = Suspected Serious Injury

B = Suspected Minor Injury

C = Possible Injury

O = No Injury

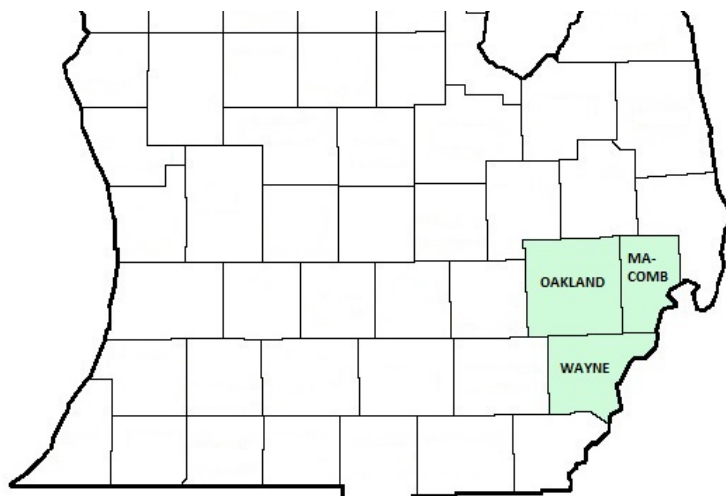
Property Damage Only (PDO)



Michigan State Police (MSP) District 2 - Metro

2018 Traffic Crash Data & 2014-2018 5-Year Trends

Beginning in 2011, District 2 is comprised of Macomb, Oakland, and Wayne counties. Trend tables for this report are based on those counties.



Sources:

The crashes in this report occurred on public roadways in Michigan and resulted in injuries, fatalities, or property damage (with \$1,000 as a reporting threshold). The information was gathered from Michigan Traffic Crash Report Forms (UD-10) submitted by local police departments, sheriff's offices, and the Michigan State Police. Other related information was obtained from the departments of Transportation, State, and Community Health.

This page left intentionally blank

MSP District 2 - Metro

- There were 120,670 crashes in District 2 during 2018. [Page 1]
- A total of 271 fatalities resulted from 258 fatal crashes in 2018 in District 2. [Page 1]
- There were 34,043 injuries and 24,726 injury crashes. [Page 1]
- There were 95,686 property damage only crashes (no fatalities or injuries). [Page 1]
- October had the highest number of crashes (11,485). [Pages 1-2]
- August had the highest number of fatal crashes (38) and fatalities (40). [Pages 1-2]
- May had the highest number of injury crashes (2,391) and injuries (3,321). [Page 1]
- January had the highest number of property damage only crashes (9,455). [Page 1]
- Of all vehicles involved in fatal crashes, 34 (8.1%) were motorcycles. [Page 1]
- Friday was the day of the week with the highest number of crashes (19,783) and Saturday had the highest number of fatal crashes (49). [Pages 2-3]
- The 3:00 PM - 5:59 PM time period had the highest number of crashes (32,562). This holds true for every year between 2014 and 2018. The Midnight - 2:59 AM time period had the highest number of fatal crashes (55). [Pages 5-6]
- During the period from 2014 to 2018, the highest number of deer crashes occurred in 2015 (2,903). The 6:00 PM - 8:59 PM time period consistently had the highest number of deer-involved crashes during the five-year period. There were 0 fatal crashes involving deer in 2018. [Pages 7-8]
- Wayne County (44.8%) had the highest number of crashes in District 2 in 2018, followed by Oakland County (33.8%), and Macomb County (21.4%). [Page 8]
- Wayne County (60.5%) had the highest number of fatalities in District 2 in 2018, followed by Oakland County (19.9%), and Macomb County (19.6%). [Page 8]
- The highest number of drivers in crashes (238,176) occurred during 2017 and the highest number of drivers coded drinking in crashes (3,202) occurred during 2015 within the five year period between 2014 and 2018. [Page 9]
- A total of 3,217 crashes involved alcohol in 2018. [Page 11]
- Alcohol-involved fatal crashes were the highest in 2016 during the five-year period from 2014 to 2018 at 97. [Page 11]
- A total of 883 crashes, 54 fatal crashes, and 82 suspected serious injury crashes involved drugs in 2018. [Page 12]
- There were 191,792 drivers wearing seatbelts and 1,067 drivers not wearing seatbelts in crashes in 2018. Of the 1,067 drivers not wearing seat belts, 30 (2.8%) were killed and 405 (38.0%) were injured. [Pages 15-17]
- The most common hazardous action coded for drivers in 2018 in all crashes was unable to stop in assured clear distance (38,894), while the most common hazardous action coded for drivers in fatal crashes was unknown (49). [Page 18]

MSP District 2 - Metro (continued)

District 2 Experience

In 2018:

There were 235,556 drivers involved in 120,670 motor vehicle crashes in MSP District 2. Of those crashes, 258 were classified as fatal, resulting in 271 fatalities. An additional 34,043 persons were injured.

District 2 experienced the highest number of motor vehicle crashes (11,485) in October, the highest number of fatal crashes (38) and the highest number of persons killed (40) in August.

Michigan driver statistics indicate 6.3 percent of licensed drivers in District 2 were age 16-20, and 8.9 percent of drivers in crashes were also in that age group.

2018 - Crashes and Injuries by Month

Month	Crashes				Persons	
	Total	Fatal	Injury	Property Damage Only (PDO)	Fatalities	Injuries
January	11,443	8	1,980	9,455	9	2,616
February	10,051	18	1,713	8,320	18	2,301
March	9,077	11	1,767	7,299	13	2,417
April	8,681	20	1,776	6,885	21	2,396
May	10,679	22	2,391	8,266	25	3,321
June	10,372	30	2,328	8,014	32	3,248
July	9,238	21	2,113	7,104	23	2,999
August	9,474	38	2,178	7,258	40	3,010
September	9,706	31	2,231	7,444	31	3,078
October	11,485	15	2,290	9,180	15	3,162
November	10,532	22	2,017	8,493	22	2,818
December	9,932	22	1,942	7,968	22	2,677
Total	120,670	258	24,726	95,686	271	34,043

2018 - Driver Statistics

Age Group	District 2			Driver Rates	
	2018 Population	Licensed Drivers	Drivers in Crashes	Per 10k Population	Per 10k Licensed
0 - 15	758,953	17,961	282	3.7	157.0
16 - 20	231,873	173,783	21,053	908.0	1,211.5
21 - 24	197,219	175,525	20,411	1,034.9	1,162.9
25 - 64	2,069,091	1,866,431	143,485	693.5	768.8
65 +	630,717	531,093	21,515	341.1	405.1
Unknown	0	0	28,810	--	--
Total	3,887,853	2,764,793	235,556	605.9	852.0

2018 - Vehicles in Crashes

Vehicle Type	Motor Vehicles		Fatal Crashes		Injury Crashes	PDO Crashes
	Number of Vehicles	% of Total	Number	% of Total	Number	Number
Passenger car, SUV, van	200,662	85.2	309	72.0	43,231	157,122
Motor home	437	0.2	0	0.0	68	369
Pickup truck	17,998	7.6	43	10.0	3,336	14,619
Small truck under 10,000 lbs. GVWR	1,219	0.5	1	0.2	182	1,036
Motorcycle	883	0.4	34	7.9	628	221
Moped / goped	115	0.0	4	0.9	84	27
Go-cart / golf cart	16	0.0	1	0.2	9	6
Snowmobile	2	0.0	0	0.0	1	1
Off-Road Vehicle - ORV / All-Terrain Vehicle - ATV	46	0.0	2	0.5	36	8
Other	843	0.4	0	0.0	119	724
Truck/bus over 10,000 lbs.	6,858	2.9	27	6.3	1,113	5,718
Unknown	6,477	2.7	8	1.9	842	5,627
Total	235,556	100.0	429	100.0	49,649	185,478

5-Year Trend - Crashes by Month

Month	2014		2015		2016		2017		2018	
	Total Crashes	Fatal Crashes	Total Crashes	Fatal Crashes	Total Crashes	Fatal Crashes	Total Crashes	Fatal Crashes	Total Crashes	Fatal Crashes
January	13,865	15	11,314	19	9,778	17	9,733	23	11,443	8
February	9,658	19	10,234	12	9,649	23	8,079	20	10,051	18
March	9,279	12	8,739	18	9,783	13	10,744	18	9,077	11
April	7,127	21	7,918	23	9,287	32	8,697	18	8,681	20
May	8,957	19	9,558	20	9,973	24	10,917	24	10,679	22
June	8,987	27	9,451	36	10,002	30	10,469	29	10,372	30
July	7,781	24	8,960	33	9,549	23	9,213	19	9,238	21
August	8,677	23	8,943	36	9,841	39	9,820	19	9,474	38
September	9,234	26	9,755	22	10,447	34	9,814	24	9,706	31
October	10,155	29	10,015	17	10,675	29	11,248	18	11,485	15
November	10,740	19	10,407	33	10,282	34	10,463	19	10,532	22
December	8,393	24	9,869	24	11,969	23	12,891	23	9,932	22
Total	112,853	258	115,163	293	121,235	321	122,088	254	120,670	258

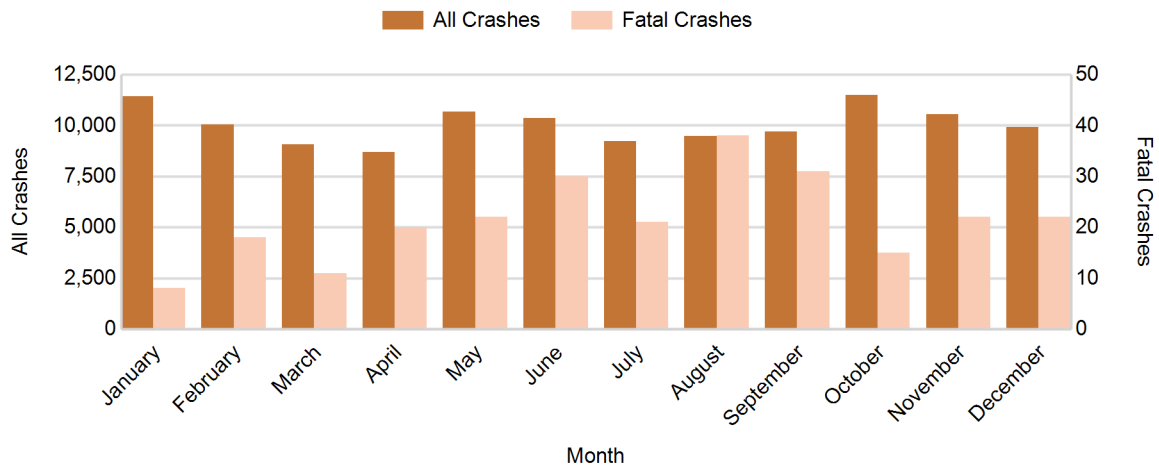
Note: † Indicates that the highest number of total crashes reported in the 5-year period occurred in the same month

5-Year Trend - Crashes by Day of Week

Day	2014		2015		2016		2017		2018	
	Total Crashes	Fatal Crashes	Total Crashes	Fatal Crashes	Total Crashes	Fatal Crashes	Total Crashes	Fatal Crashes	Total Crashes	Fatal Crashes
Monday	16,324	44	16,936	39	17,242	32	18,636	34	18,671	40
Tuesday	17,759	36	17,868	35	18,669	37	19,371	39	19,467	35
Wednesday	19,086	22	18,438	36	19,477	44	19,532	31	18,378	20
Thursday	17,905	30	17,573	36	19,612	44	19,209	40	18,850	34
Friday	18,225	36	18,687	52	20,093	47	19,805	35	19,783	47
Saturday	13,250	46	14,551	58	14,573	62	14,270	40	14,361	49
Sunday	10,304	44	11,110	37	11,569	55	11,265	35	11,160	33
Total	112,853	258	115,163	293	121,235	321	122,088	254	120,670	258

Note: † Indicates that the highest number of total crashes reported in the 5-year period occurred on the same day of the week

2018 Crashes by Month

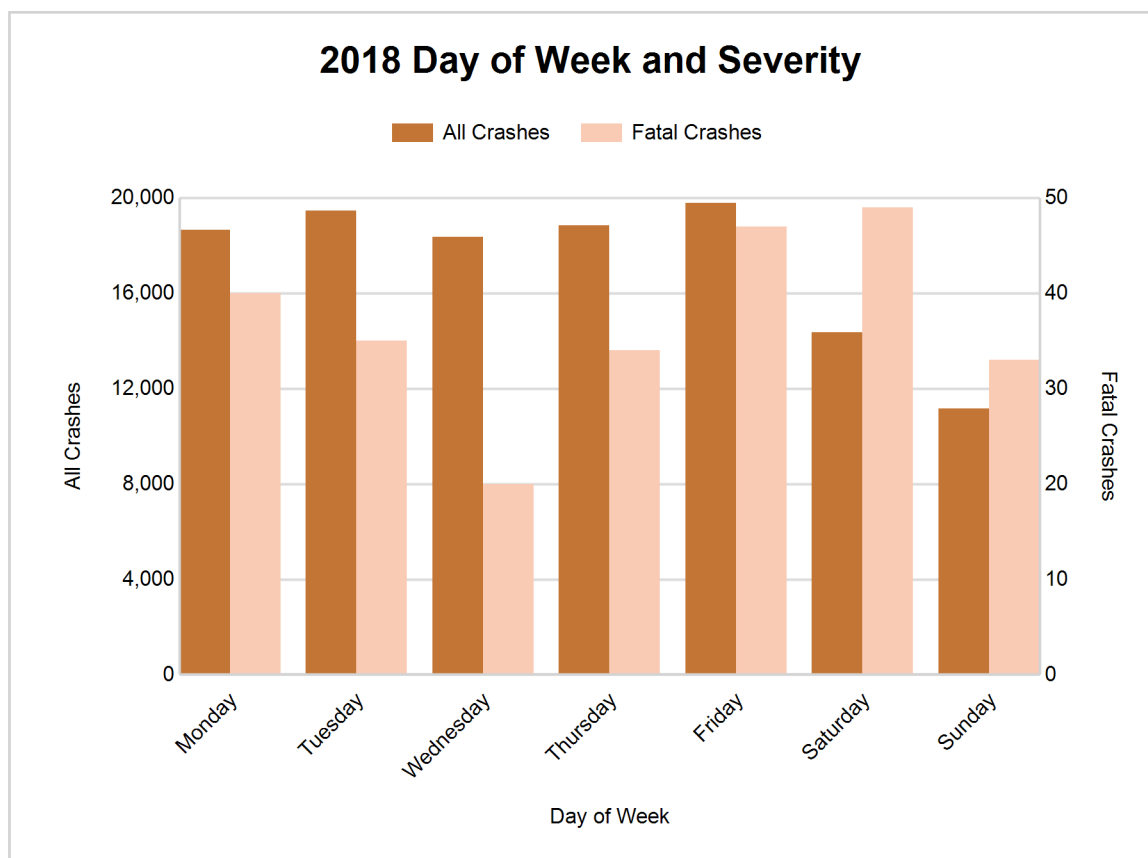


MSP District 2 - Metro (continued)

2018 - Crashes by Day of Week

Day	All Crashes		Fatal Crashes		Injury Crashes			PDO Crashes
	Number	% of Total	Number	% of Fatal	A	B	C	Number
Monday	18,671	15.5	40	15.5	219	1,022	2,558	14,832
Tuesday	19,467	16.1	35	13.6	190	1,102	2,557	15,583
Wednesday	18,378	15.2	20	7.8	188	1,016	2,402	14,752
Thursday	18,850	15.6	34	13.2	193	993	2,628	15,002
Friday	19,783	16.4	47	18.2	202	1,110	2,712	15,712
Saturday	14,361	11.9	49	19.0	205	885	1,998	11,224
Sunday	11,160	9.2	33	12.8	231	733	1,582	8,581
Total	120,670	100.0	258	100.0	1,428	6,861	16,437	95,686

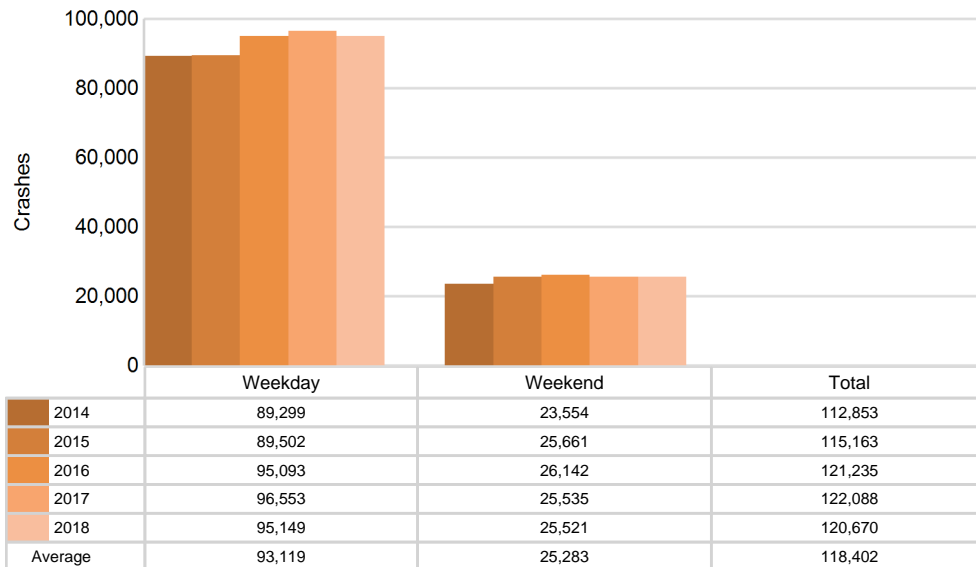
2018 Day of Week and Severity



5-Year Trend - Crashes by Weekday and Weekend

Portion of Week	2014		2015		2016		2017		2018	
	Total Crashes	Fatal Crashes	Total Crashes	Fatal Crashes	Total Crashes	Fatal Crashes	Total Crashes	Fatal Crashes	Total Crashes	Fatal Crashes
Weekday	89,299	168	89,502	198	95,093	204	96,553	179	95,149	176
Weekend	23,554	90	25,661	95	26,142	117	25,535	75	25,521	82
Total	112,853	258	115,163	293	121,235	321	122,088	254	120,670	258

5-Year Crash Trends by Weekday (Monday - Friday) and Weekend (Saturday & Sunday)

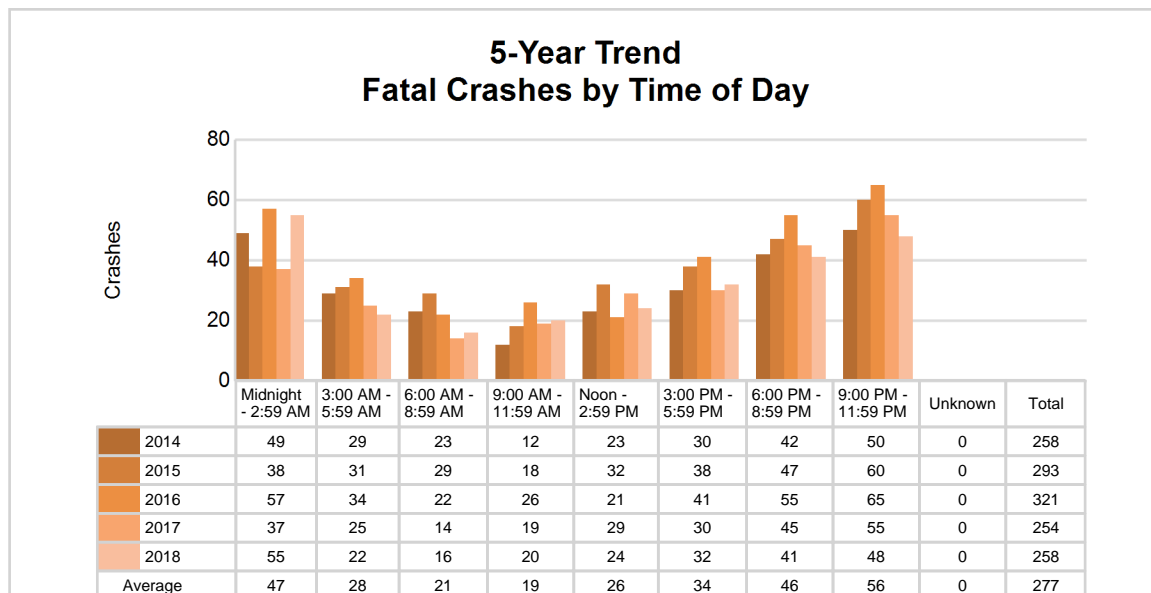
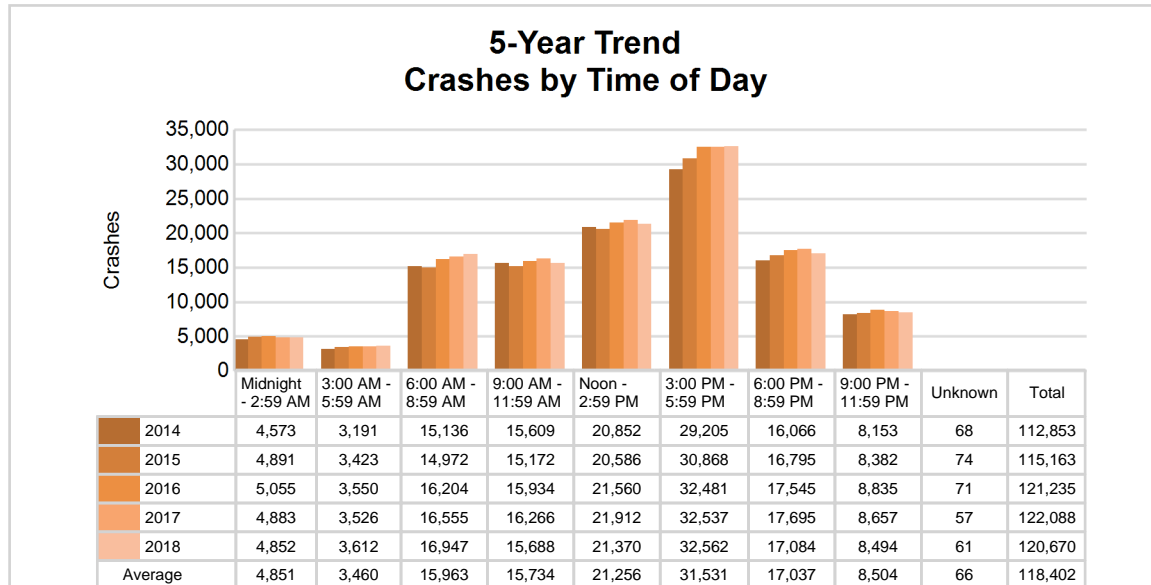


MSP District 2 - Metro (continued)

5-Year Trend - Crashes by Time of Day

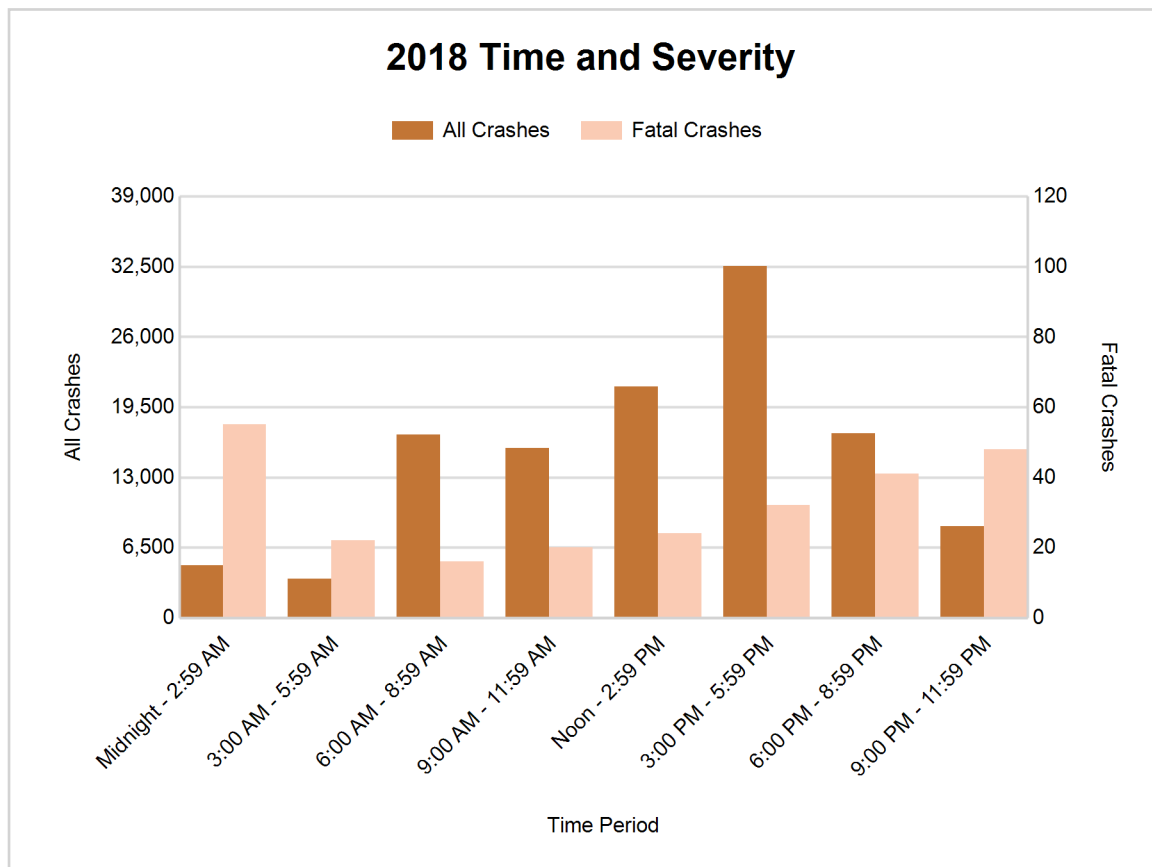
Time of Day	2014		2015		2016		2017		2018	
	Total Crashes	Fatal Crashes	Total Crashes	Fatal Crashes	Total Crashes	Fatal Crashes	Total Crashes	Fatal Crashes	Total Crashes	Fatal Crashes
Midnight - 2:59 AM	4,573	49	4,891	38	5,055	57	4,883	37	4,852	55
3:00 AM - 5:59 AM	3,191	29	3,423	31	3,550	34	3,526	25	3,612	22
6:00 AM - 8:59 AM	15,136	23	14,972	29	16,204	22	16,555	14	16,947	16
9:00 AM - 11:59 AM	15,609	12	15,172	18	15,934	26	16,266	19	15,688	20
Noon - 2:59 PM	20,852	23	20,586	32	21,560	21	21,912	29	21,370	24
3:00 PM - 5:59 PM	29,205 †	30	30,868 †	38	32,481 †	41	32,537 †	30	32,562 †	32
6:00 PM - 8:59 PM	16,066	42	16,795	47	17,545	55	17,695	45	17,084	41
9:00 PM - 11:59 PM	8,153	50	8,382	60	8,835	65	8,657	55	8,494	48
Unknown	68	0	74	0	71	0	57	0	61	0
Total	112,853	258	115,163	293	121,235	321	122,088	254	120,670	258

Note: † Indicates that the highest number of total crashes reported in the 5-year period occurred in the same time period



2018 - Time and Severity

Time of Day	All Crashes		Fatal Crashes		Injury Crashes			PDO Crashes
	Number	% of Total	Number	% of Fatal	A	B	C	Number
Midnight - 2:59 AM	4,852	4.0	55	21.3	131	384	714	3,568
3:00 AM - 5:59 AM	3,612	3.0	22	8.5	91	284	439	2,776
6:00 AM - 8:59 AM	16,947	14.0	16	6.2	137	786	2,077	13,931
9:00 AM - 11:59 AM	15,688	13.0	20	7.8	140	795	2,047	12,686
Noon - 2:59 PM	21,370	17.7	24	9.3	214	1,229	3,026	16,877
3:00 PM - 5:59 PM	32,562	27.0	32	12.4	268	1,689	4,549	26,024
6:00 PM - 8:59 PM	17,084	14.2	41	15.9	230	1,085	2,327	13,401
9:00 PM - 11:59 PM	8,494	7.0	48	18.6	217	607	1,254	6,368
Unknown	61	0.1	0	0.0	0	2	4	55
Total	120,670	100.0	258	100.0	1,428	6,861	16,437	95,686

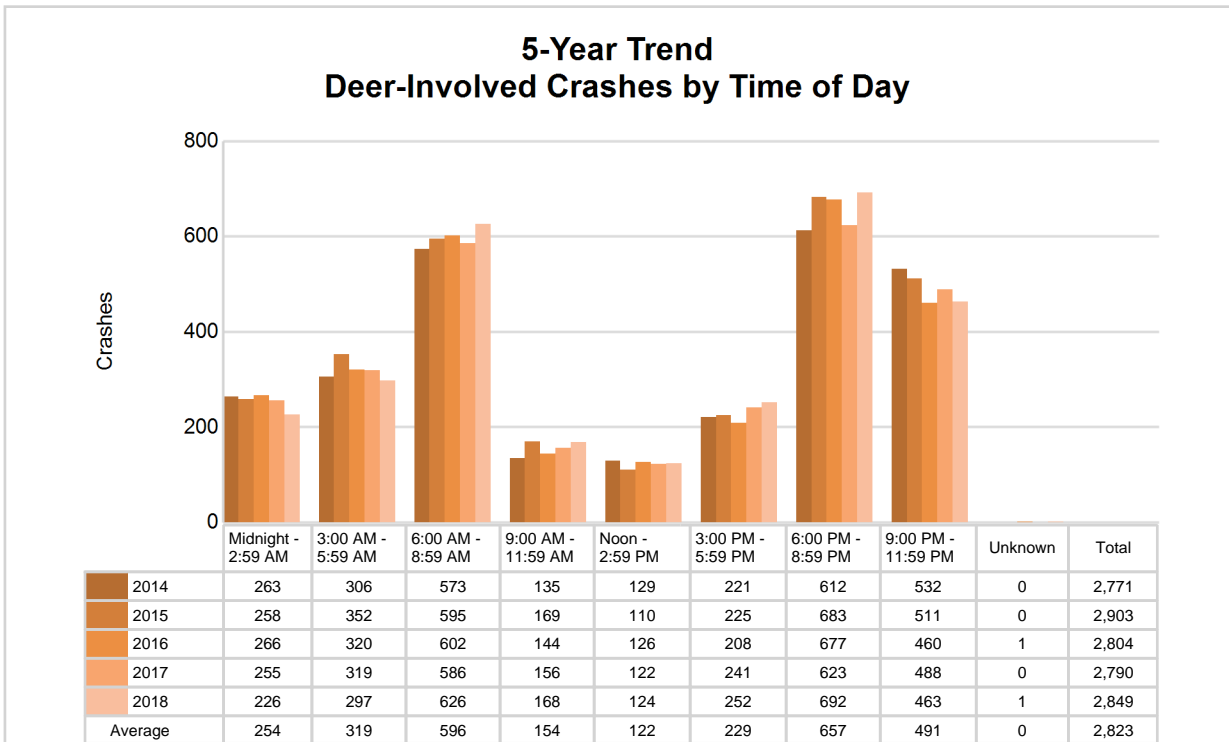


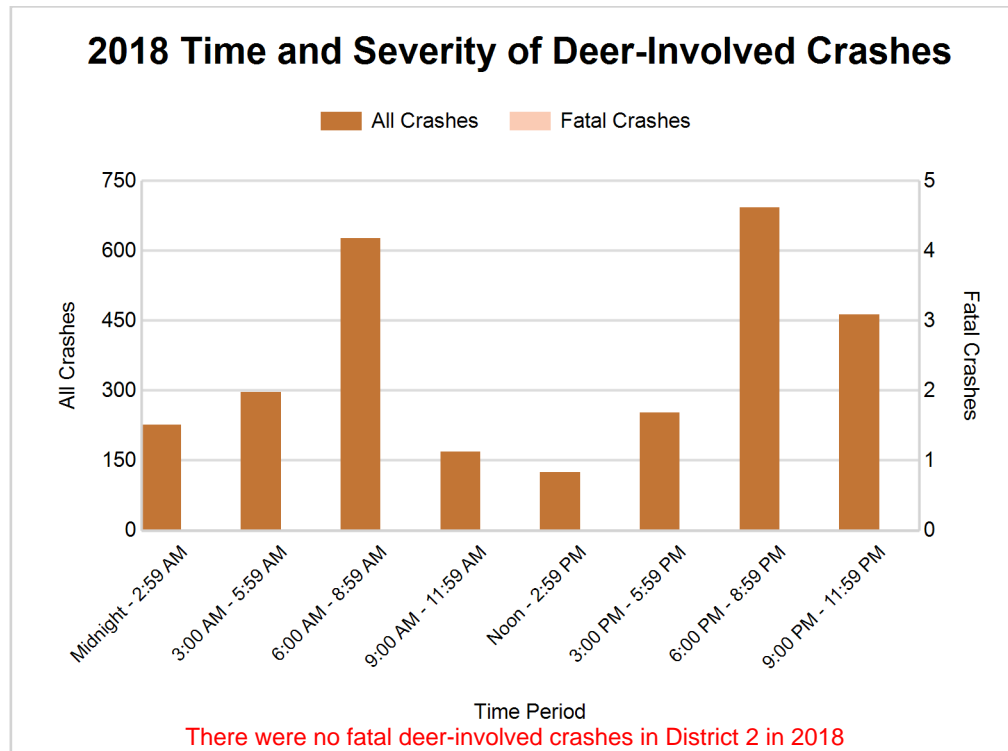
MSP District 2 - Metro (continued)

5-Year Trend - Deer-Involved Crashes by Time of Day

Time of Day	2014		2015		2016		2017		2018	
	Total Crashes	Fatal Crashes	Total Crashes	Fatal Crashes	Total Crashes	Fatal Crashes	Total Crashes	Fatal Crashes	Total Crashes	Fatal Crashes
Midnight - 2:59 AM	263	0	258	0	266	0	255	1	226	0
3:00 AM - 5:59 AM	306	0	352	0	320	0	319	0	297	0
6:00 AM - 8:59 AM	573	0	595	0	602	0	586	0	626	0
9:00 AM - 11:59 AM	135	0	169	0	144	0	156	0	168	0
Noon - 2:59 PM	129	0	110	0	126	0	122	0	124	0
3:00 PM - 5:59 PM	221	0	225	0	208	0	241	0	252	0
6:00 PM - 8:59 PM	612 †	0	683 †	0	677 †	0	623 †	0	692 †	0
9:00 PM - 11:59 PM	532	0	511	0	460	0	488	0	463	0
Unknown	0	0	0	0	1	0	0	0	1	0
Total	2,771	0	2,903	0	2,804	0	2,790	1	2,849	0

Note: † Indicates that the highest number of total crashes reported in the 5-year period occurred in the same time period





2018 - Reported Motor Vehicle Crashes by County

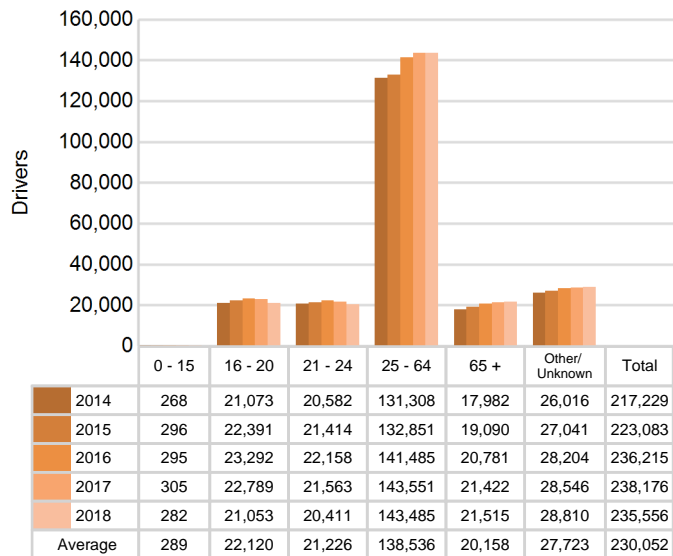
County	Crashes											Persons	
	Total	Fatal	Injury	Property Damage	Inter-state	US Route	State Route	Local Street	Alcohol-Involved	Drug-Involved	Deer-Involved	Fatalities	Injuries
Macomb	25,784	52	5,372	20,360	2,691	0	7,047	16,030	737	208	585	53	7,360
Oakland	40,814	53	7,558	33,203	6,973	2,392	7,017	24,395	1,058	279	1,851	54	10,105
Wayne	54,072	153	11,796	42,123	9,144	3,402	10,083	31,426	1,422	396	413	164	16,578
Total	120,670	258	24,726	95,686	18,808	5,794	24,147	71,851	3,217	883	2,849	271	34,043

MSP District 2 - Metro (continued)

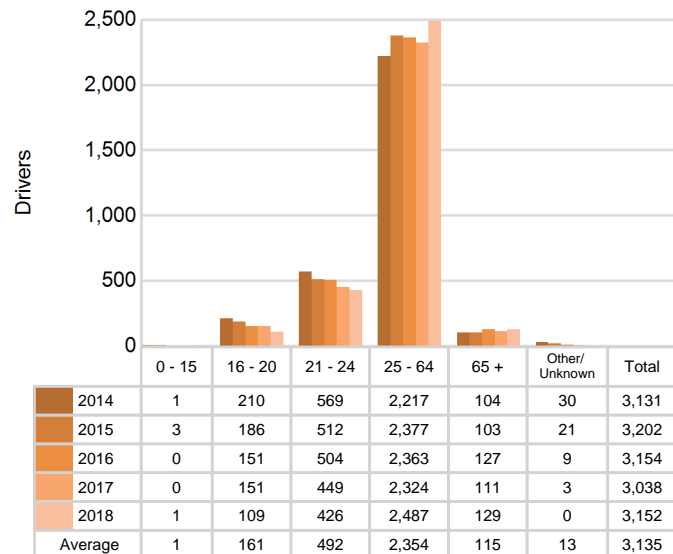
5-Year Trend - Drivers in Crashes Coded Drinking by Driver Age

Driver Age	2014		2015		2016		2017		2018	
	Total Drivers in Crashes	Total Drivers Coded Drinking	Total Drivers in Crashes	Total Drivers Coded Drinking	Total Drivers in Crashes	Total Drivers Coded Drinking	Total Drivers in Crashes	Total Drivers Coded Drinking	Total Drivers in Crashes	Total Drivers Coded Drinking
0 - 15	268	1	296	3	295	0	305	0	282	1
16 - 20	21,073	210	22,391	186	23,292	151	22,789	151	21,053	109
21 - 24	20,582	569	21,414	512	22,158	504	21,563	449	20,411	426
25 - 64	131,308	2,217	132,851	2,377	141,485	2,363	143,551	2,324	143,485	2,487
65 +	17,982	104	19,090	103	20,781	127	21,422	111	21,515	129
Unknown	26,016	30	27,041	21	28,204	9	28,546	3	28,810	0
Total	217,229	3,131	223,083	3,202	236,215	3,154	238,176	3,038	235,556	3,152

**5-Year Trend
Total Drivers in Crashes by Age**



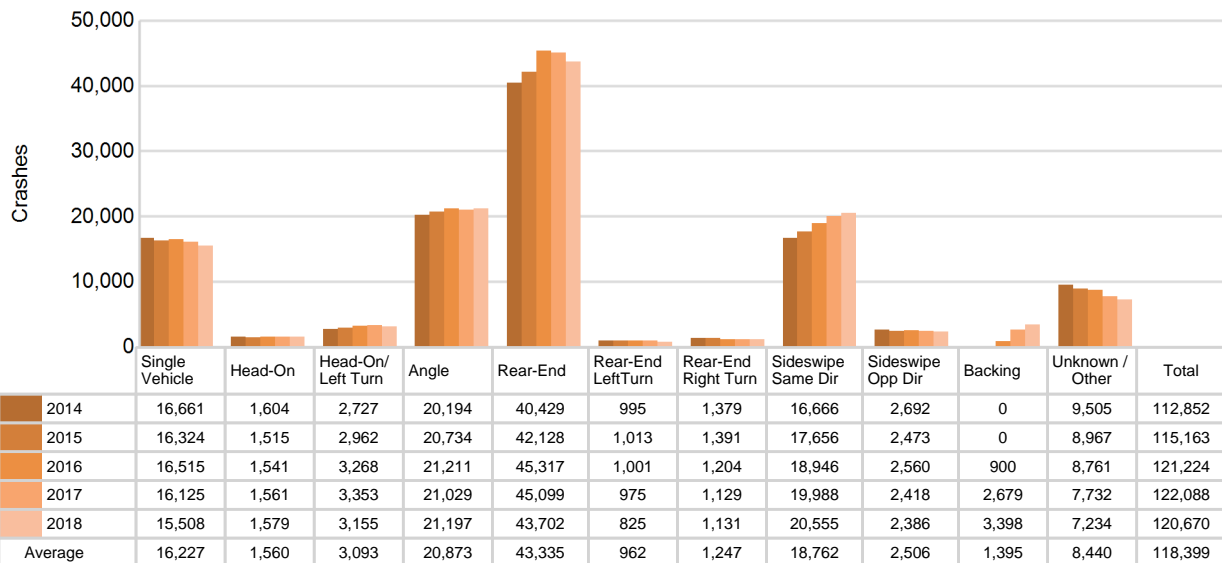
**5-Year Trend
Total Drivers Coded Drinking by Age**



5-Year Trend - Crashes by Crash Type

Crash Type	2014		2015		2016		2017		2018	
	Total Crashes	Fatal Crashes	Total Crashes	Fatal Crashes	Total Crashes	Fatal Crashes	Total Crashes	Fatal Crashes	Total Crashes	Fatal Crashes
Single motor vehicle	16,661	153	16,324	141	16,515	165	16,125	106	15,508	125
Head-on	1,604	23	1,515	20	1,541	24	1,561	33	1,579	19
Head-on / left turn	2,727	9	2,962	15	3,268	20	3,353	6	3,155	7
Angle	20,194	30	20,734	42	21,211	51	21,029	44	21,197	37
Rear-end	40,429	20	42,128	29	45,317	37	45,099	25	43,702	26
Rear-end left turn	995	0	1,013	1	1,001	1	975	0	825	0
Rear-end right turn	1,379	0	1,391	0	1,204	0	1,129	0	1,131	0
Sideswipe same direction	16,666	4	17,656	12	18,946	6	19,988	9	20,555	8
Sideswipe opposite direction	2,692	0	2,473	2	2,560	6	2,418	3	2,386	4
Backing	0	0	0	0	900	0	2,679	0	3,398	0
Other / Unknown	9,505	19	8,967	31	8,761	11	7,732	28	7,234	32
Uncoded and Errors	1	0	0	0	11	0	0	0	0	0
Total	112,853	258	115,163	293	121,235	321	122,088	254	120,670	258

5-Year Trend Crashes by Crash Type



2018 - Bodily Alcohol Concentration (BAC) Results Among All Vehicle Drivers in Alcohol-Involved Crashes by Age

Age Group	Drivers				BAC Result Range for Drivers Coded Drinking				
	Total Drivers in Alcohol-Involved Crashes	Total Drivers Tested in all Crashes	Total Drivers Coded Drinking, Tested	Total Drivers Coded Drinking	BAC = 0.00	BAC 0.01 g/dL to 0.07 g/dL	BAC 0.08 g/dL to 0.16 g/dL	BAC 0.17 g/dL and Above	BAC Not Reported
0 - 15	4	1	1	1	0	0	1	0	0
16 - 20	237	123	94	109	0	9	29	29	42
21 - 24	589	423	378	426	0	28	135	135	128
25 - 64	3,791	2,425	2,154	2,487	2	134	573	870	908
65 +	251	140	117	129	0	19	36	37	37
Unknown	623	5	0	0	0	0	0	0	0
Total	5,495	3,117	2,744	3,152	2	190	774	1,071	1,115

Notes: BAC measured in grams (g) per deciliter (dL).

BAC may not be reported if drivers are not tested or if the results are not available immediately (as in the case of a blood test).

A driver may be coded by the officer as drinking even though no test is administered.

Alcohol-Involved Crashes

In 2018, there were 5,495 drivers in alcohol-involved crashes; 3,152 (57.4%) of those drivers were coded as had-been-drinking by the officer on the crash form.

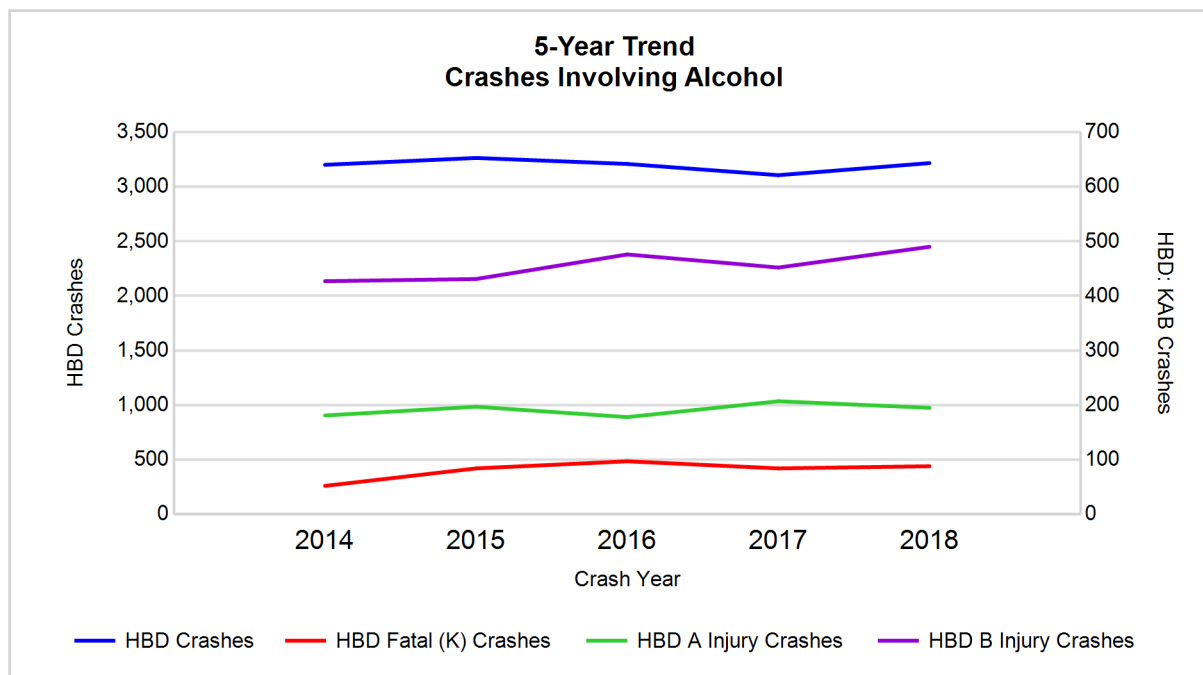
- 1,845 (58.5%) of the 3,152 drivers had a blood alcohol concentration (BAC) of 0.08 g/dL (grams per deciliter) or greater, and 1,071 (58.0%) of the 1,845 drivers had a BAC at or above 0.17 g/dL.
- 2,744 (87.1%) of the 3,152 drivers were coded as had-been-drinking and were tested for alcohol consumption.

5-Year Trend - Crashes Involving Alcohol

Year	All Crashes	HBD Crashes	% HBD	Fatal Crashes	HBD Fatal Crashes	% HBD	A Injury Crashes	HBD A Injury Crashes	% HBD	B Injury Crashes	HBD B Injury Crashes	% HBD
2014	112,853	3,201	2.8	258	52	20.2	1,367	181	13.2	5,342	427	8.0
2015	115,163	3,264	2.8	293	84	28.7	1,301	197	15.1	5,549	431	7.8
2016	121,235	3,209	2.6	321	97	30.2	1,360	178	13.1	6,400	476	7.4
2017	122,088	3,106	2.5	254	84	33.1	1,544	207	13.4	7,008	452	6.4
2018	120,670	3,217	2.7	258	88	34.1**	1,428	195	13.7	6,861	490**	7.1

Note: * Indicates that the most recent year is the lowest number or percentage reported in the 5-year period in that column

** Indicates that the most recent year is the highest number or percentage reported in the 5-year period in that column



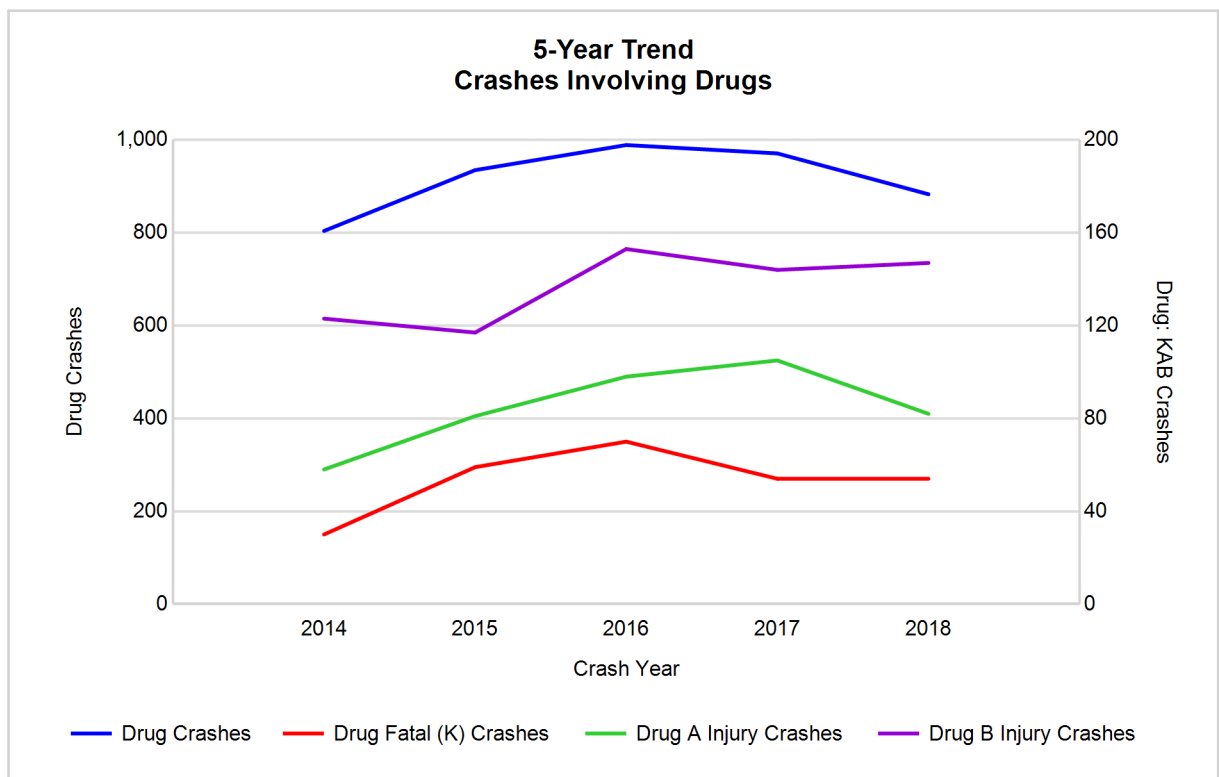
Note: Had-Been-Drinking (HBD)

5-Year Trend - Crashes Involving Drugs

Year	All Crashes	Drug Crashes	% Drug	Fatal Crashes	Drug Fatal Crashes	% Drug	A Injury Crashes	Drug A Injury Crashes	% Drug	B Injury Crashes	Drug B Injury Crashes	% Drug
2014	112,853	804	0.7	258	30	11.6	1,367	58	4.2	5,342	123	2.3
2015	115,163	935	0.8	293	59	20.1	1,301	81	6.2	5,549	117	2.1
2016	121,235	989	0.8	321	70	21.8	1,360	98	7.2	6,400	153	2.4
2017	122,088	971	0.8	254	54	21.3	1,544	105	6.8	7,008	144	2.1
2018	120,670	883	0.7	258	54	20.9	1,428	82	5.7	6,861	147	2.1

Note: * Indicates that the most recent year is the lowest number or percentage reported in the 5-year period in that column

** Indicates that the most recent year is the highest number or percentage reported in the 5-year period in that column

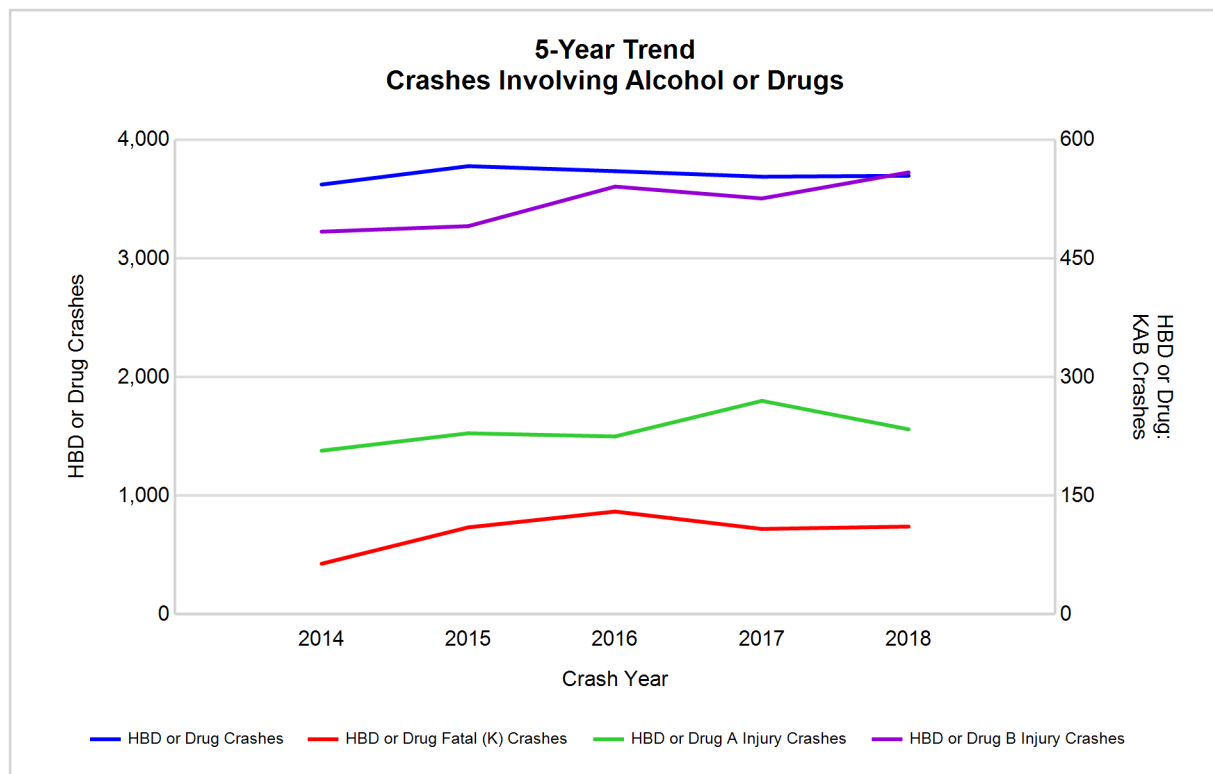


5-Year Trend - Crashes Involving Alcohol or Drugs

Year	All Crashes	HBD or Drug Crashes	% HBD or Drug	Fatal Crashes	HBD or Drug Fatal Crashes	% HBD or Drug	A Injury Crashes	HBD or Drug A Injury Crashes	% HBD or Drug	B Injury Crashes	HBD or Drug B Injury Crashes	% HBD or Drug
2014	112,853	3,624	3.2	258	64	24.8	1,367	207	15.1	5,342	484	9.1
2015	115,163	3,779	3.3	293	110	37.5	1,301	229	17.6	5,549	491	8.8
2016	121,235	3,737	3.1	321	130	40.5	1,360	225	16.5	6,400	541	8.5
2017	122,088	3,690	3.0	254	108	42.5	1,544	270	17.5	7,008	526	7.5
2018	120,670	3,698	3.1	258	111	43.0**	1,428	234	16.4	6,861	559**	8.1

Note: * Indicates that the most recent year is the lowest number or percentage reported in the 5-year period in that column

** Indicates that the most recent year is the highest number or percentage reported in the 5-year period in that column



Note: Had-Been-Drinking (HBD)

2018 - Restraints Worn Among Vehicle Drivers and Injured Passengers by Vehicle Type

Vehicle Type	Total Occupants			Fatalities			A - Suspected Serious			B - Suspected Minor			C - Possible Injury			No Injury		
	Total	Used Restraint	%	Total	Used Restraint	%	Total	Used Restraint	%	Total	Used Restraint	%	Total	Used Restraint	%	Total	Used Restraint	%
Passenger car, SUV, van	207,994	174,685	84.0	140	69	49.3	1,104	779	70.6	6,919	6,128	88.6	21,650	19,552	90.3	157,546	148,141	94.0
Motor home	443	350	79.0	0	0	0.0	5	4	80.0	9	8	88.9	25	21	84.0	356	317	89.0
Pickup truck	18,335	15,551	84.8	8	4	50.0	58	41	70.7	385	345	89.6	1,158	1,050	90.7	14,764	14,111	95.6
Small truck under 10,000 lbs. GVWR	1,232	975	79.1	0	0	0.0	2	1	50.0	12	11	91.7	53	47	88.7	995	916	92.1
Motorcycle	940	561	59.7	35	16	45.7	170	103	60.6	330	206	62.4	161	103	64.0	204	133	65.2
Moped / goped	119	32	26.9	4	0	0.0	24	6	25.0	36	12	33.3	25	10	40.0	16	4	25.0
Go-cart / golf cart	21	5	23.8	1	0	0.0	2	0	0.0	8	1	12.5	3	2	66.7	4	2	50.0
Snowmobile	3	2	66.7	0	0	0.0	0	0	0.0	1	1	100.0	1	1	100.0	1	0	0.0
Off-Road Vehicle - ORV / All-Terrain Vehicle - ATV	55	9	16.4	2	1	50.0	20	1	5.0	14	3	21.4	9	2	22.2	7	2	28.6
Other	855	487	57.0	0	0	0.0	5	1	20.0	12	7	58.3	37	21	56.8	560	458	81.8
Truck/bus over 10,000 lbs.	6,987	6,091	87.2	2	1	50.0	13	8	61.5	86	58	67.4	242	150	62.0	6,203	5,873	94.7
Unknown	6,479	2	0.0	0	0	0.0	0	0	0.0	1	0	0.0	2	0	0.0	58	2	3.4
Total	243,463	198,750	81.6	192	91	47.4	1,403	944	67.3	7,813	6,780	86.8	23,366	20,959	89.7	180,714	169,959	94.0

Note: Restraint Use includes shoulder belt only used, lap belt only used, both lap and shoulder belts used, child restraint used, restraint failure, and helmet worn.

2018 - Restraints Worn Among Vehicle Drivers and Injured Passengers by Age

Age Group	Total Occupants			Fatalities			A - Suspected Serious			B - Suspected Minor			C - Possible Injury			No Injury		
	Total	Used Restraint	%	Total	Used Restraint	%	Total	Used Restraint	%	Total	Used Restraint	%	Total	Used Restraint	%	Total	Used Restraint	%
0 - 15	2,250	1,855	82.4	6	2	33.3	39	21	53.8	304	219	72.0	1,666	1,421	85.3	227	192	84.6
16 - 20	22,115	20,671	93.5	15	6	40.0	132	78	59.1	842	747	88.7	2,366	2,089	88.3	18,605	17,749	95.4
21 - 24	21,128	19,395	91.8	21	8	38.1	160	95	59.4	886	743	83.9	2,146	1,905	88.8	17,742	16,641	93.8
25 - 64	146,953	135,840	92.4	115	47	40.9	945	644	68.1	4,869	4,206	86.4	14,717	13,220	89.8	125,012	117,712	94.2
65 +	22,206	20,983	94.5	35	28	80.0	126	106	84.1	911	865	95.0	2,462	2,322	94.3	18,521	17,661	95.4
Unknown	28,811	6	0.0	0	0	0.0	1	0	0.0	1	0	0.0	9	2	22.2	607	4	0.7
Total	243,463	198,750	81.6	192	91	47.4	1,403	944	67.3	7,813	6,780	86.8	23,366	20,959	89.7	180,714	169,959	94.0

Note: Restraint Use includes shoulder belt only used, lap belt only used, both lap and shoulder belts used, child restraint used, restraint failure, and helmet worn.

5-Year Trend - Restraint Use Among Drivers

Restraint Use	2014			2015			2016			2017			2018		
	Drivers	Fatal Drivers	Injured Drivers	Drivers	Fatal Drivers	Injured Drivers	Drivers	Fatal Drivers	Injured Drivers	Drivers	Fatal Drivers	Injured Drivers	Drivers	Fatal Drivers	Injured Drivers
No belts available	435	2	63	584	2	87	340	0	52	241	1	39	176	0	32
Shoulder belt only used	231	0	40	313	0	34	750	1	100	883	1	113	616	0	99
Lap belt only used	333	1	39	411	0	50	281	0	32	248	1	25	188	0	27
Both lap & shoulder belts used	181,123	51	20,155	184,428	62	21,242	195,277	57	22,816	194,373	55	22,549	190,964	56	21,769
No belts used	1,160	34	387	1,216	36	422	1,181	42	438	971	28	422	891	30	373
Child restraint used	3	0	0	10	0	1	12	0	1	9	0	1	1	0	0
Child restraint not used, unavailable or improper use	7	0	0	11	0	2	3	0	0	0	0	0	0	0	0
Restraint failure	31	0	4	38	0	4	36	0	8	33	0	9	24	0	5
Restraint use unknown	21,436	20	977	21,834	20	1,257	29,419	37	1,162	34,895	34	1,436	36,740	28	1,687
Helmet worn	602	14	432	678	28	476	725	24	512	666	15	477	569	16	414
Helmet not worn	296	9	227	329	13	242	487	17	282	310	16	230	332	20	253
Helmet use unknown	104	3	42	120	3	43	98	6	36	78	5	46	87	3	55
Uncoded & errors	11,468	0	35	13,111	0	17	7,606	0	16	5,469	0	0	4,968	0	0
Total	217,229	134	22,401	223,083	164	23,877	236,215	184	25,455	238,176	156	25,347	235,556	153	24,714

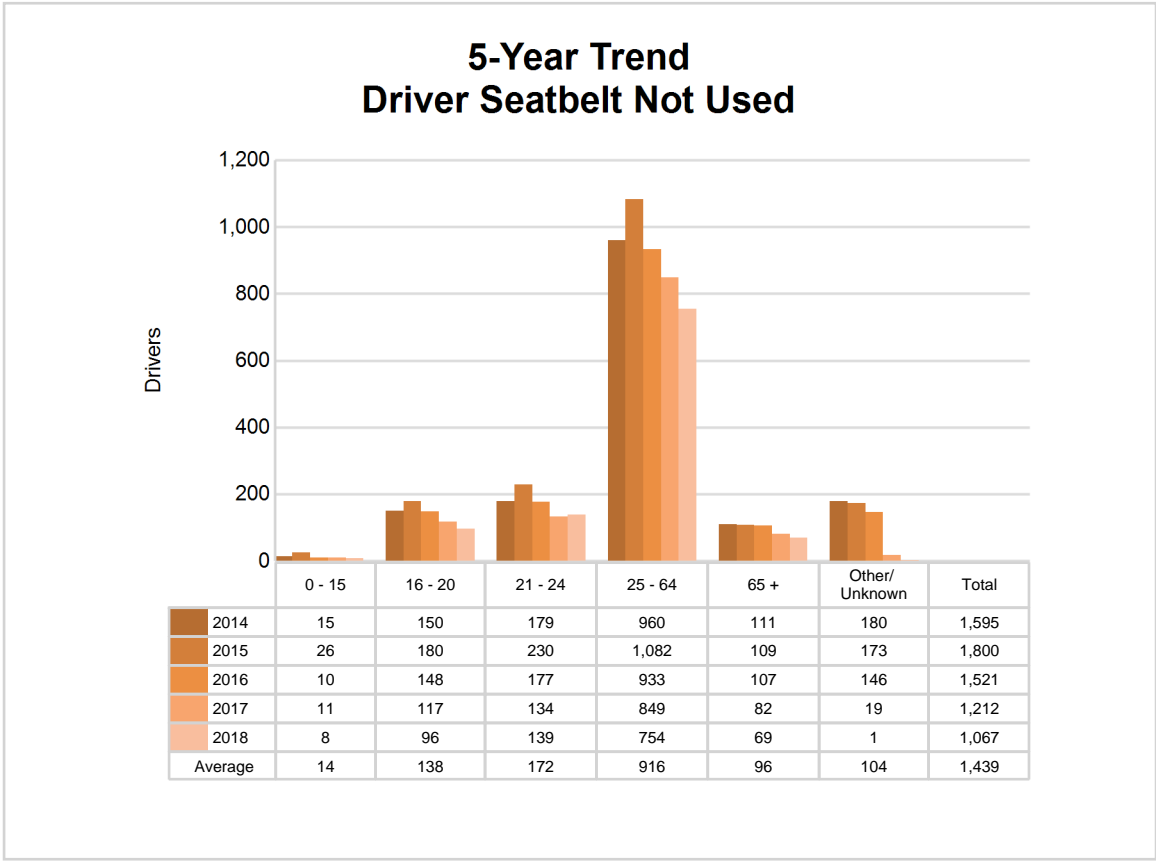
5-Year Trend - Restraint Use Among Drivers Coded Drinking

Restraint Use	2014			2015			2016			2017			2018		
	Drivers	Fatal Drivers	Injured Drivers	Drivers	Fatal Drivers	Injured Drivers	Drivers	Fatal Drivers	Injured Drivers	Drivers	Fatal Drivers	Injured Drivers	Drivers	Fatal Drivers	Injured Drivers
No belts available	8	0	1	12	0	4	9	0	4	4	0	0	8	0	3
Shoulder belt only used	7	0	2	7	0	2	15	0	3	7	0	2	5	0	1
Lap belt only used	7	0	2	5	0	2	2	0	1	1	0	0	3	0	1
Both lap & shoulder belts used	2,411	5	517	2,434	8	529	2,410	6	600	2,318	13	552	2,393	5	588
No belts used	164	7	105	170	13	98	172	18	94	120	9	71	133	9	84
Child restraint used	0	0	0	0	0	0	0	0	0	1	0	0	0	0	0
Child restraint not used, unavailable or improper use	0	0	0	0	0	0	0	0	0	0	0	0	0	0	0
Restraint failure	0	0	0	0	0	0	0	0	0	0	0	0	0	0	0
Restraint use unknown	467	1	116	517	7	146	486	11	123	537	10	155	555	16	168
Helmet worn	20	3	15	24	1	19	21	2	18	16	1	14	16	3	11
Helmet not worn	37	1	34	29	6	19	35	5	27	28	3	24	36	7	25
Helmet use unknown	3	0	2	1	0	0	2	1	1	4	0	2	3	0	2
Uncoded & errors	7	0	1	3	0	0	2	0	0	2	0	0	0	0	0
Total	3,131	17	795	3,202	35	819	3,154	43	871	3,038	36	820	3,152	40	883

5-Year Trend - Seatbelt Not Used Among Drivers by Age

Age Group	2014			2015			2016			2017			2018		
	Drivers	Fatal Drivers	Injured Drivers	Drivers	Fatal Drivers	Injured Drivers	Drivers	Fatal Drivers	Injured Drivers	Drivers	Fatal Drivers	Injured Drivers	Drivers	Fatal Drivers	Injured Drivers
0 - 15	15	0	3	26	0	5	10	0	1	11	0	2	8	0	4
16 - 20	150	4	50	180	3	74	148	2	71	117	5	52	96	4	44
21 - 24	179	6	63	230	6	81	177	6	79	134	5	58	139	3	63
25 - 64	960	20	297	1,082	25	313	933	28	310	849	14	326	754	20	278
65 +	111	6	27	109	4	32	107	6	27	82	5	23	69	3	16
Unknown	180	0	10	173	0	4	146	0	2	19	0	0	1	0	0
Total	1,595	36	450	1,800	38	509	1,521	42	490	1,212	29	461	1,067	30	405

Note: Seatbelt Not Used includes no belts available or no belts used.

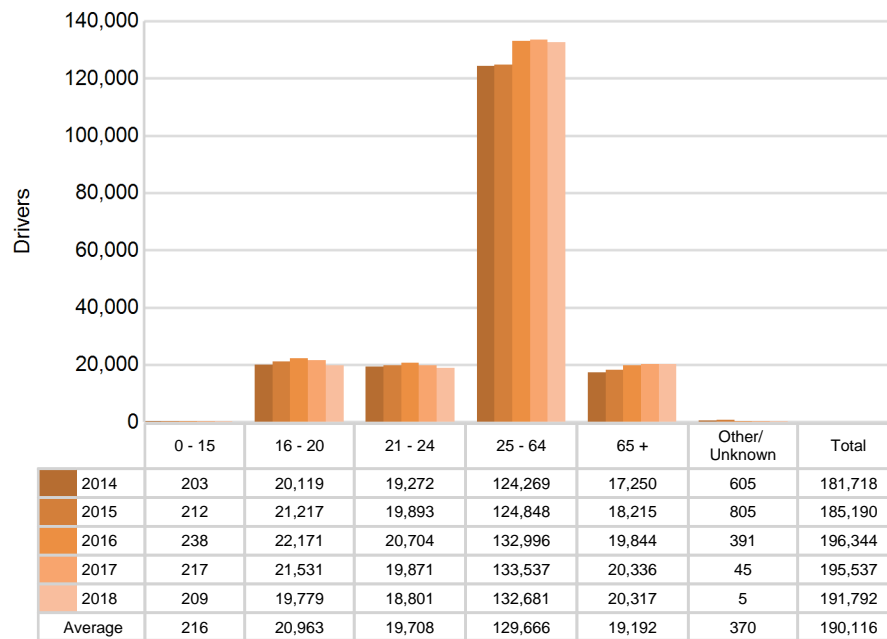


5-Year Trend - Seatbelt Used Among Drivers by Age

Age Group	2014			2015			2016			2017			2018		
	Drivers	Fatal Drivers	Injured Drivers	Drivers	Fatal Drivers	Injured Drivers	Drivers	Fatal Drivers	Injured Drivers	Drivers	Fatal Drivers	Injured Drivers	Drivers	Fatal Drivers	Injured Drivers
0 - 15	203	0	19	212	0	23	238	1	16	217	0	17	209	0	19
16 - 20	20,119	1	2,007	21,217	6	2,148	22,171	3	2,276	21,531	5	2,201	19,779	2	2,038
21 - 24	19,272	4	2,194	19,893	6	2,226	20,704	4	2,456	19,871	4	2,320	18,801	4	2,174
25 - 64	124,269	32	13,885	124,848	32	14,505	132,996	32	15,562	133,537	35	15,517	132,681	31	15,018
65 +	17,250	15	2,118	18,215	18	2,421	19,844	18	2,640	20,336	13	2,638	20,317	19	2,650
Unknown	605	0	15	805	0	7	391	0	6	45	0	3	5	0	1
Total	181,718	52	20,238	185,190	62	21,330	196,344	58	22,956	195,537	57	22,696	191,792	56	21,900

Note: Seatbelt Used includes shoulder belt only used, lap belt only used, both lap and shoulder belts used, and restraint failure.

5-Year Trend Driver Seatbelt Used



5-Year Trend - Drivers in Crashes by Hazardous Action

Hazardous Action	2014		2015		2016		2017		2018	
	Total Drivers in Crashes	Drivers in Fatal Crashes	Total Drivers in Crashes	Drivers in Fatal Crashes	Total Drivers in Crashes	Drivers in Fatal Crashes	Total Drivers in Crashes	Drivers in Fatal Crashes	Total Drivers in Crashes	Drivers in Fatal Crashes
None	103,387	155	108,110	199	111,862	229	111,142	196	109,103	176
Speed too fast	9,630	36	7,679	41	7,823	59	7,535	41	7,405	47
Speed too slow	72	1	96	2	77	1	48	0	60	1
Failed to yield	18,746	12	19,453	27	20,369	23	20,748	17	21,148	21
Disregard traffic control	4,307	14	4,682	24	5,020	22	4,950	13	4,985	20
Drove wrong way	215	4	240	0	215	2	200	5	233	0
Drove left of center	1,032	14	929	10	970	19	956	16	889	16
Improper passing	1,062	2	1,142	2	1,178	4	1,286	3	1,365	2
Improper lane use	5,697	2	6,512	7	7,200	3	7,531	3	7,506	3
Improper turn	2,023	1	2,350	5	2,378	2	2,490	3	2,460	2
Improper/no signal	219	0	238	0	177	0	181	0	152	0
Improper backing	3,211	3	3,210	1	3,211	0	3,098	0	3,180	1
Unable to stop in assured clear distance	36,625	12	38,099	20	40,955	17	40,407	13	38,894	17
Other	7,937	29	7,722	31	7,849	31	7,618	26	7,804	26
Unknown	12,311	66	11,855	51	15,860	57	20,466	54	21,151	49
Reckless driving	1,019	20	1,157	26	1,212	27	1,020	28	958	26
Careless/negligent driving	4,481	22	5,141	31	5,229	26	4,187	20	3,980	22
Uncoded & errors	5,255	6	4,468	2	4,630	3	4,313	8	4,283	0
Total	217,229	399	223,083	479	236,215	525	238,176	446	235,556	429

MSP District 2 - Metro (continued)



The picture above represents all 2018 alcohol-involved fatal crashes in District 2.

In 2018, there were 3,217 alcohol-involved crashes in District 2:

88	K - Fatal Crashes
195	A - Suspected Serious Injury Crashes
490	B - Suspected Minor Injury Crashes
565	C - Possible Injury Crashes
1,879	O - Property Damage Only/No Injury Crashes

Office of Highway Safety Planning

Physical Address:

7150 Harris Drive
Dimondale, Michigan 48821

Mailing Address:

P.O. Box 30634
Lansing, Michigan 48909

Phone: (517) 284-3112

Fax: (517) 284-3151

Find us on the web:

MichiganTrafficCrashFacts.org

