

MTCF

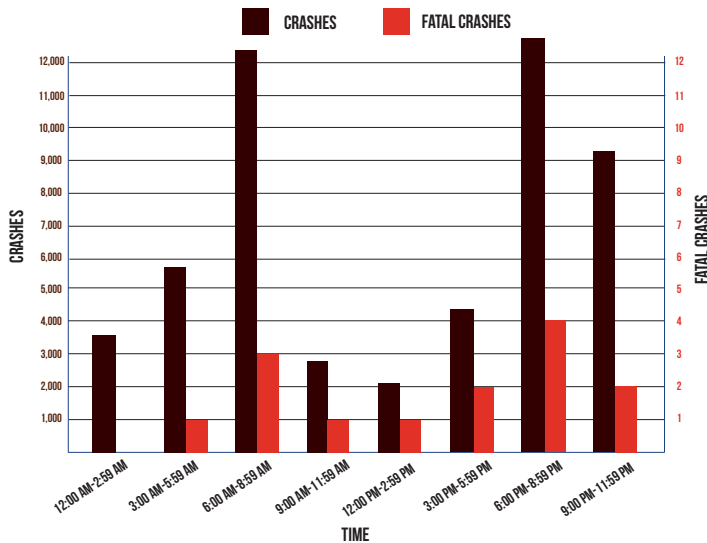
Michigan Traffic Crash Facts

DEER

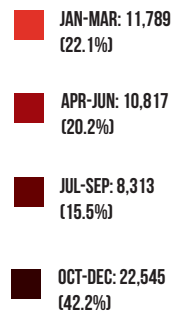
2018

Deer crashes include situations where a deer is a contributing factor, but does not necessarily come in contact with a traffic unit.

MOTOR VEHICLE-DEER CRASHES BY TIME OF DAY



MOTOR VEHICLE-DEER CRASHES BY TIME OF YEAR



Michigan had 53,464 (17.1% of the total crashes) motor vehicle-deer crashes.

Passenger cars, SUVs, and vans represented 79.6 percent (42,751) of the vehicles involved.

As a result of vehicle-deer crashes, 1,335 people were injured and 14 people were killed. Four (28.6%) of those killed were occupants in passenger vehicles, nine (64.3%) killed were motorcyclists, and one (7.1%) was an ORV/ATV rider.

Motor vehicle-deer involved crashes were highest during the 7:00-7:59 AM time period (5,612).

The top 10 counties experiencing vehicle-deer crashes were: Oakland 1,851; Kent 1,837; Jackson 1,537; Lapeer 1,275; Ottawa 1,267; Allegan 1,160; Genesee 1,136; Calhoun 1,104; Clinton 1,103; and Isabella 1,094.

The highest number of vehicle-deer crashes occurred during November (9,353).

Of the motor vehicle-deer crashes, 22,545 (42.2%) occurred during the fourth quarter of the year.

Michigan Department of State Police
Office of Highway Safety Planning - Traffic Safety Programs (517) 284-3112
WWW.MICHIGAN.GOV/OHSP