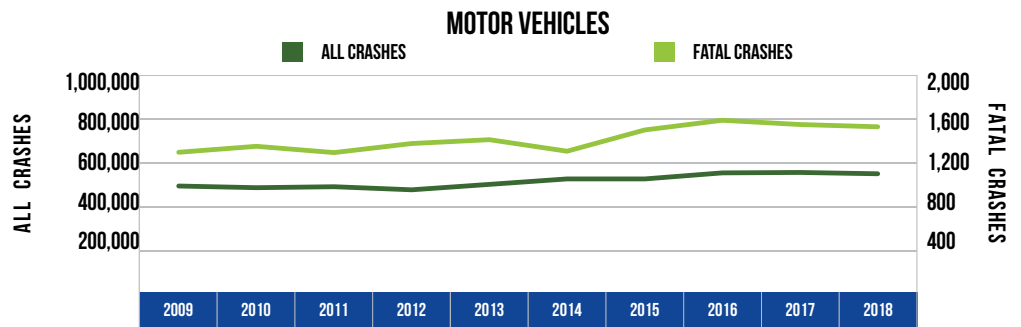


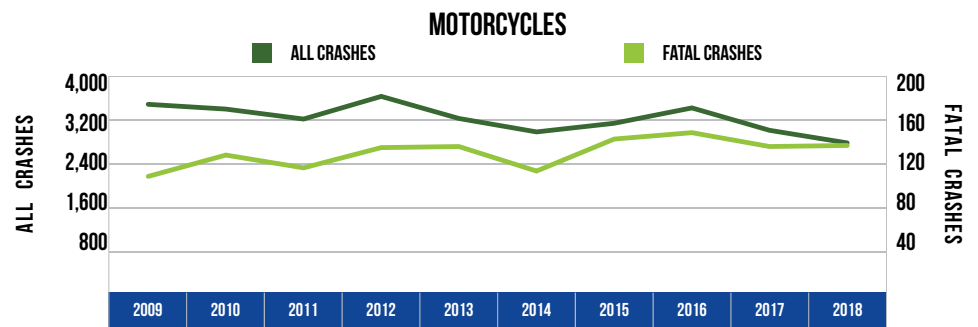
## 10 YEAR TRENDS-STATEWIDE (CONTINUED)

MOTOR VEHICLES		
Year	All Crashes	Fatal Crashes
2009	476,801	1,270
2010	468,968	1,326
2011	473,501	1,267
2012	459,030	1,352
2013	484,446	1,388
2014	510,086	1,280
2015	510,074	1,479
2016	538,412	1,570
2017	540,387	1,530
2018	534,223	1,509



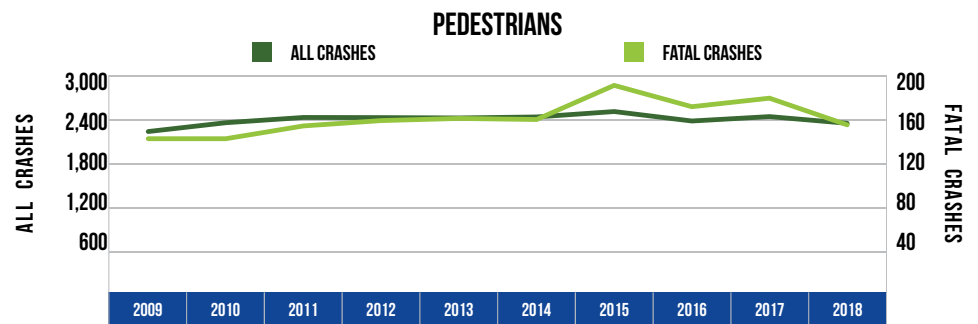
There were 534,223 motor vehicles involved in all crashes in 2018, up 12.0 percent from 2009. There were 1,509 motor vehicles involved in fatal crashes in 2018, up 18.8 percent from 2009.

MOTORCYCLES		
Year	All Crashes	Fatal Crashes
2009	3,451	105
2010	3,362	125
2011	3,175	113
2012	3,600	132
2013	3,186	133
2014	2,934	110
2015	3,096	140
2016	3,384	146
2017	2,964	133
2018	2,728	134



There were 2,728 motorcycles involved in crashes in 2018, a 21.0 percent decrease from 2009. There were 134 motorcycles involved in fatal crashes in 2018, up 27.6 percent from 2009.

PEDESTRIANS		
Year	All Crashes	Fatal Crashes
2009	2,201	140
2010	2,325	140
2011	2,399	152
2012	2,397	157
2013	2,392	159
2014	2,406	158
2015	2,482	190
2016	2,349	170
2017	2,411	178
2018	2,317	153



There were 2,317 pedestrians involved in crashes in 2018, up 5.3 percent from 2009. There were 153 pedestrians involved in fatal crashes in 2018, up 9.3 percent from 2009.