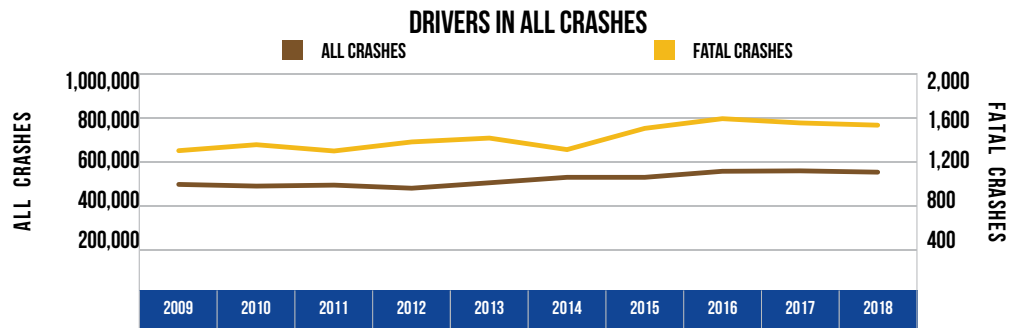


## 10 YEAR TRENDS-STATEWIDE (CONTINUED)

### DRIVERS IN ALL CRASHES

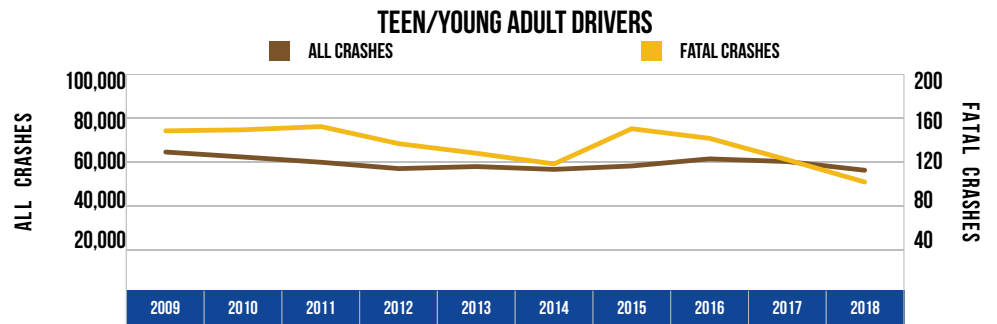
Year	All Crashes	Fatal Crashes
2009	476,801	1,270
2010	468,968	1,326
2011	473,501	1,267
2012	459,030	1,352
2013	484,446	1,388
2014	510,086	1,280
2015	510,074	1,479
2016	538,412	1,570
2017	540,387	1,530
2018	534,223	1,509



The number of drivers involved in all crashes increased 12.0 percent over the 10-year period. The number of drivers involved in fatal crashes increased 18.8 percent over the 10-year period.

### TEEN/YOUNG ADULT DRIVERS (AGE 16-20)

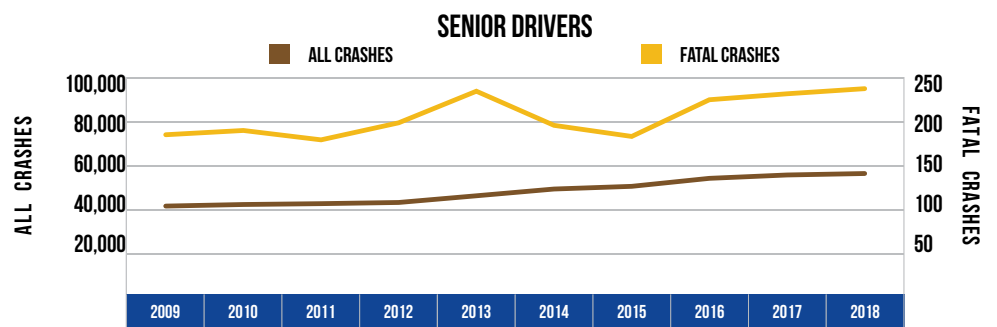
Year	All Crashes	Fatal Crashes
2009	63,069	146
2010	60,721	147
2011	58,279	150
2012	55,307	134
2013	56,264	125
2014	54,935	115
2015	56,544	148
2016	59,865	139
2017	58,607	119
2018	54,530	98



Teen/young adult drivers (age 16-20) represented 6.4 percent of the licensed drivers in 2018. The number of teen/young adult drivers in all crashes has decreased by 13.5 percent since 2009. Their involvement in fatal crashes has decreased 32.9 percent during the same time period.

### SENIOR DRIVERS (AGE 65 & OVER)

Year	All Crashes	Fatal Crashes
2009	39,357	182
2010	40,096	187
2011	40,495	176
2012	41,047	196
2013	44,183	233
2014	47,356	193
2015	48,615	180
2016	52,362	223
2017	53,934	230
2018	54,621	236



Senior drivers (age 65 and over) represented 21.1 percent of the licensed drivers in 2018. The number of drivers age 65 and over in all crashes has increased 38.8 percent since 2009. Senior driver involvement in fatal crashes increased 29.7 percent during the same time period.