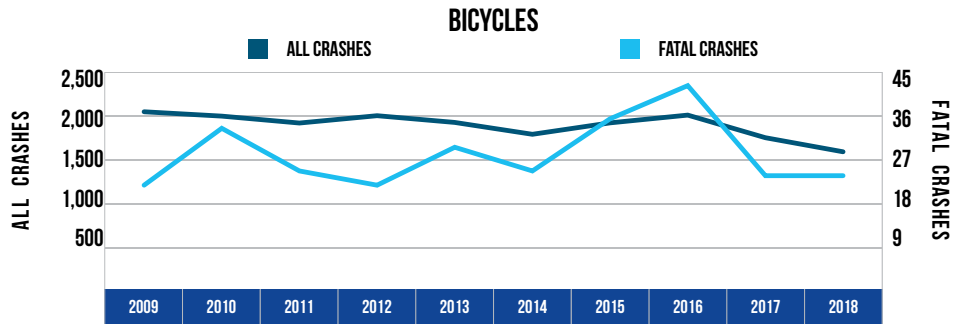


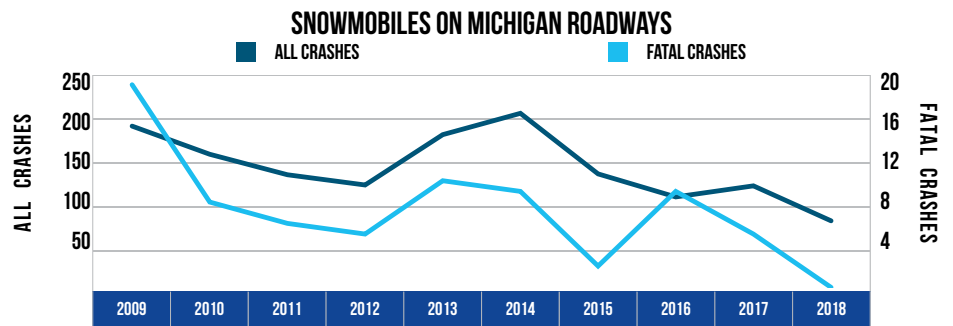
10 YEAR TRENDS-STATEWIDE (CONTINUED)

BICYCLES		
Year	All Crashes	Fatal Crashes
2009	2,027	21
2010	1,976	33
2011	1,895	24
2012	1,981	21
2013	1,902	29
2014	1,763	24
2015	1,897	35
2016	1,988	42
2017	1,723	23
2018	1,558	23



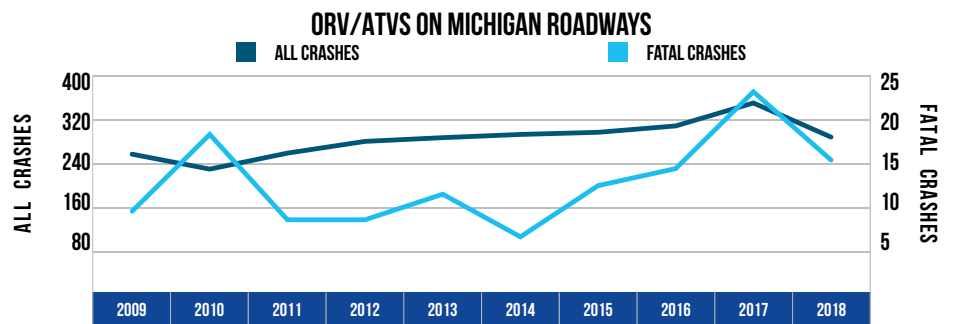
There were 1,558 bicycles involved in crashes in 2018, down 23.1 percent from 2009. There were 23 bicycles involved in fatal crashes in 2018, up 9.5 percent from 2009.

SNOWMOBILES ON MICHIGAN ROADWAYS		
Year	All Crashes	Fatal Crashes
2009	189	19
2010	156	8
2011	132	6
2012	120	5
2013	179	10
2014	204	9
2015	133	2
2016	106	9
2017	119	5
2018	78	0



There were 78 snowmobiles in crashes on roadways in 2018, down 58.7 percent from 2009. There were no snowmobiles in fatal crashes, down from 19 in 2009.

ORV/ATVS ON MICHIGAN ROADWAYS		
Year	All Crashes	Fatal Crashes
2009	251	9
2010	223	18
2011	253	8
2012	275	8
2013	282	11
2014	288	6
2015	292	12
2016	304	14
2017	347	23
2018	283	15



There were 283 ORV/ATVs in crashes on roadways in 2018, up 12.7 percent from 2009. There were 15 ORV/ATVs in fatal crashes, up 66.7 percent from 2009.