



2017

**MTCF**  
Michigan Traffic  
Crash Facts

# Michigan Traffic Crash Facts

## Reporting Criteria

Please pay particular attention to the wording when interpreting the three levels of data gathered for this report.

### Crash

The Crash Level analyzes data related to crash events and returns one result per crash.

Examples: Time, weather, and location.

### Units

The Units Level analyzes the experience of the units in the crash and returns one result per vehicle, driver, pedestrian, bicyclist, or train.

Examples: Vehicle type, driver condition, and unit events.

### People

The People Level analyzes the experience of the people involved in the crash and returns one result per occupant/person/party.

Examples: Age, injury severity, and seat belt or helmet use.

### **KABCO Injury Indicator:**

K = Killed

A = Suspected Serious Injury

B = Suspected Minor Injury

C = Possible Injury

O = No Injury

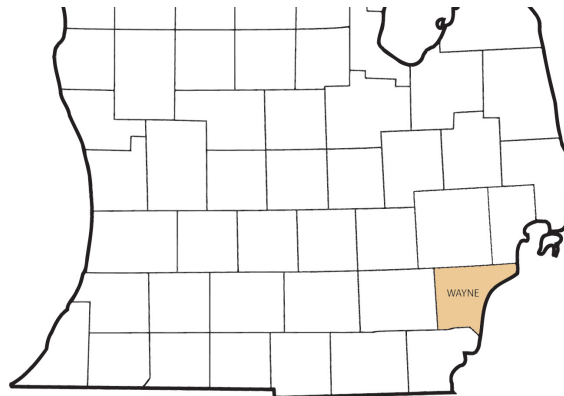
Property Damage Only (PDO)



## Traffic Safety Network Wayne County

### 2017 Traffic Crash Data & 2013-2017 5-Year Trends

Traffic Safety Network Wayne County is comprised of and Wayne counties. Trend tables for this report are based on those counties.



### Sources:

The crashes in this report occurred on public roadways in Michigan and resulted in injuries, fatalities, or property damage (with \$1,000 as a reporting threshold). The information was gathered from Michigan Traffic Crash Report Forms (UD-10) submitted by local police departments, sheriff's offices, and the Michigan State Police. Other related information was obtained from the departments of Transportation, State, and Community Health.

This page left intentionally blank

## TSN Wayne County Experience

In 2017:

There were 107,402 drivers involved in 54,920 motor vehicle crashes in Traffic Safety Network Wayne County. Of those crashes, 145 were classified as fatal, resulting in 159 fatalities. An additional 16,988 persons were injured.

Traffic Safety Network Wayne County experienced the highest number of motor vehicle crashes (5,638) in December, the highest number of fatal crashes (17) and the highest number of persons killed (20) in June.

Michigan driver statistics indicate 6.5 percent of licensed drivers in Traffic Safety Network Wayne County were age 16-20, and 8.2 percent of drivers in crashes were also in that age group.

## 2017 - Crashes and Injuries by Month

Month	Crashes				Persons	
	Total	Fatal	Injury	Property Damage Only (PDO)	Fatalities	Injuries
January	4,161	15	851	3,295	18	1,216
February	3,793	12	771	3,010	13	1,039
March	5,085	11	1,037	4,037	12	1,423
April	4,081	13	956	3,112	14	1,378
May	4,911	16	1,138	3,757	17	1,600
June	4,784	17	1,127	3,640	20	1,601
July	4,162	8	1,029	3,125	8	1,468
August	4,317	11	1,049	3,257	11	1,455
September	4,499	11	1,094	3,394	11	1,517
October	4,894	8	1,124	3,762	8	1,553
November	4,595	8	991	3,596	11	1,368
December	5,638	15	996	4,627	16	1,370
<b>Total</b>	<b>54,920</b>	<b>145</b>	<b>12,163</b>	<b>42,612</b>	<b>159</b>	<b>16,988</b>

## 2017 - Driver Statistics

Age Group	Wayne County			Driver Rates	
	2017 Population	Licensed Drivers	Drivers in Crashes	Per 10k Population	Per 10k Licensed
0 - 15	367,421	5,474	136	3.7	248.4
16 - 20	109,010	69,233	8,784	805.8	1,268.8
21 - 24	94,945	75,243	9,532	1,003.9	1,266.8
25 - 64	917,090	750,357	61,957	675.6	825.7
65 +	265,150	206,421	8,512	321.0	412.4
Unknown	0	0	18,481	--	--
<b>Total</b>	<b>1,753,616</b>	<b>1,106,728</b>	<b>107,402</b>	<b>612.5</b>	<b>970.4</b>

## 2017 - Vehicles in Crashes

Vehicle Type	Motor Vehicles		Fatal Crashes		Injury Crashes	PDO Crashes
	Number of Vehicles	% of Total	Number	% of Total	Number	Number
Passenger car, SUV, van	90,775	84.5	194	77.3	20,658	69,923
Motor home	328	0.3	1	0.4	74	253
Pickup truck	6,932	6.5	10	4.0	1,459	5,463
Small truck under 10,000 lbs. GVWR	726	0.7	0	0.0	139	587
Motorcycle	456	0.4	18	7.2	310	128
Moped / goped	79	0.1	0	0.0	65	14
Go-cart / golf cart	11	0.0	1	0.4	4	6
Snowmobile	2	0.0	0	0.0	1	1
Off-Road Vehicle - ORV / All-Terrain Vehicle - ATV	23	0.0	5	2.0	11	7
Other	566	0.5	0	0.0	81	485
Truck/bus over 10,000 lbs.	3,142	2.9	14	5.6	562	2,566
Unknown	4,362	4.1	8	3.2	596	3,758
<b>Total</b>	<b>107,402</b>	<b>100.0</b>	<b>251</b>	<b>100.0</b>	<b>23,960</b>	<b>83,191</b>

# Traffic Safety Network Wayne County (continued)

## 5-Year Trend - Crashes by Month

Month	2013		2014		2015		2016		2017	
	Total Crashes	Fatal Crashes	Total Crashes	Fatal Crashes	Total Crashes	Fatal Crashes	Total Crashes	Fatal Crashes	Total Crashes	Fatal Crashes
January	3,812	11	6,142	13	4,955	12	4,161	11	4,161	15
February	3,709	6	4,110	12	4,624	6	4,169	15	3,793	12
March	3,410	7	4,157	8	3,986	9	4,482	7	5,085	11
April	3,331	10	3,244	14	3,590	16	4,211	18	4,081	13
May	3,898	15	3,862	11	4,226	8	4,560	14	4,911	16
June	3,722	13	3,874	11	4,214	22	4,330	21	4,784	17
July	3,593	22	3,298	15	3,899	18	4,415	10	4,162	8
August	3,572	12	3,799	16	3,960	27	4,272	23	4,317	11
September	3,699	19	3,863	17	4,269	11	4,523	17	4,499	11
October	4,120	11	4,148	17	4,222	10	4,502	15	4,894	8
November	3,801	12	4,478	10	4,383	24	4,437	20	4,595	8
December	4,186	13	3,456	11	4,130	11	5,102	12	5,638	15
<b>Total</b>	<b>44,853</b>	<b>151</b>	<b>48,431</b>	<b>155</b>	<b>50,458</b>	<b>174</b>	<b>53,164</b>	<b>183</b>	<b>54,920</b>	<b>145</b>

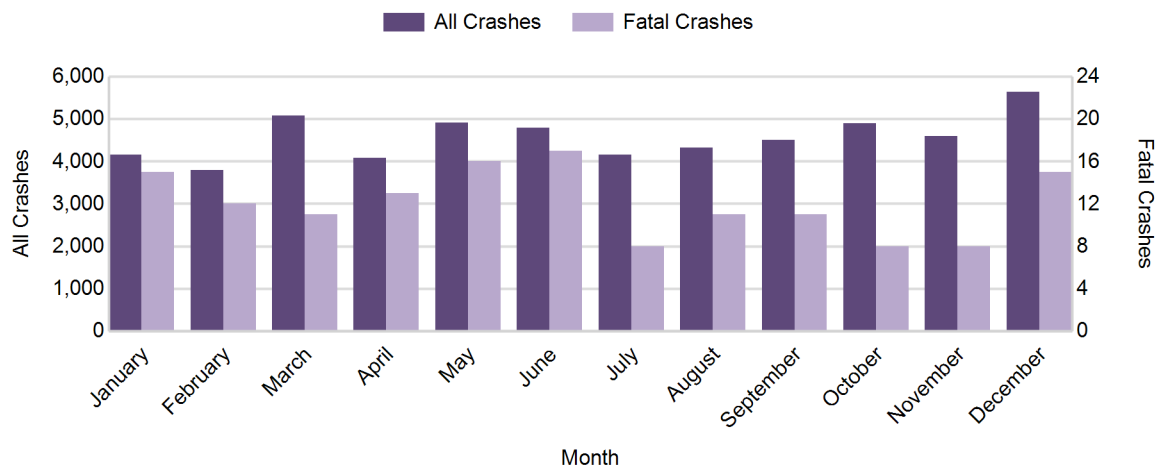
Note: † Indicates that the highest number of total crashes reported in the 5-year period occurred in the same month

## 5-Year Trend - Crashes by Day of Week

Day	2013		2014		2015		2016		2017	
	Total Crashes	Fatal Crashes	Total Crashes	Fatal Crashes	Total Crashes	Fatal Crashes	Total Crashes	Fatal Crashes	Total Crashes	Fatal Crashes
Monday	6,586	12	6,787	32	7,237	20	7,425	14	8,258	20
Tuesday	6,414	12	7,318	18	7,497	22	7,797	23	8,248	23
Wednesday	6,592	19	8,023	10	7,744	20	8,094	17	8,502	11
Thursday	6,809	24	7,469	13	7,531	21	8,403	25	8,444	18
Friday	7,265	26	7,715	25	8,024	25	8,645	27	8,922	23
Saturday	6,362	30	6,148	30	6,858	39	7,037	39	6,804	30
Sunday	4,825	28	4,971	27	5,567	27	5,763	38	5,742	20
<b>Total</b>	<b>44,853</b>	<b>151</b>	<b>48,431</b>	<b>155</b>	<b>50,458</b>	<b>174</b>	<b>53,164</b>	<b>183</b>	<b>54,920</b>	<b>145</b>

Note: † Indicates that the highest number of total crashes reported in the 5-year period occurred on the same day of the week

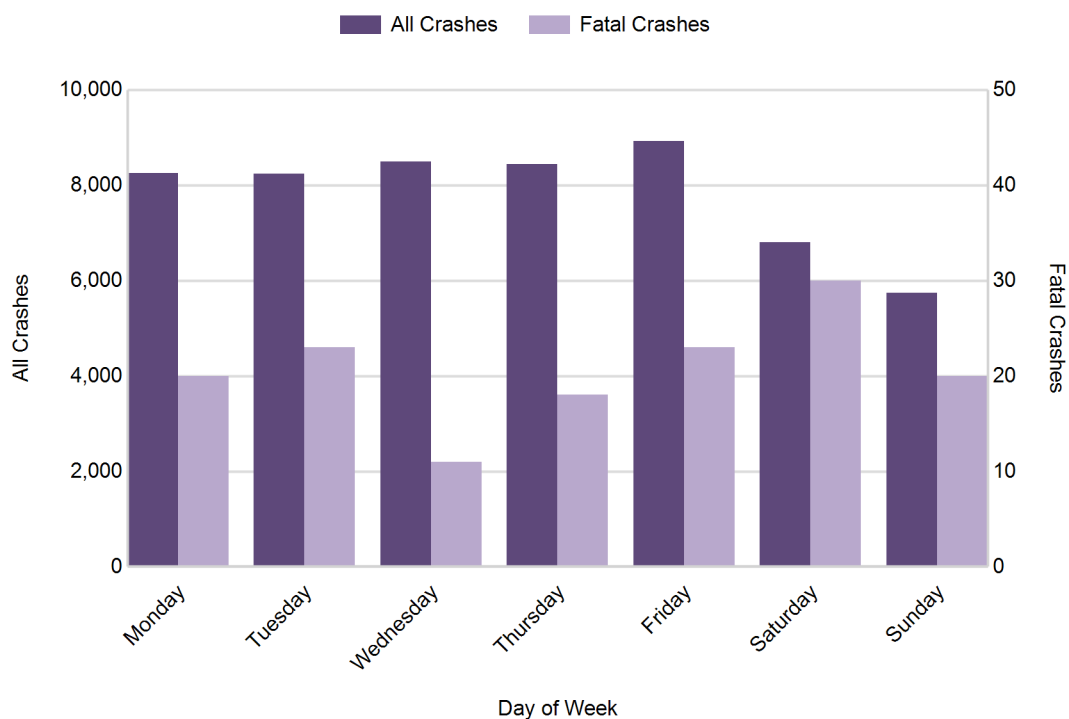
## 2017 Crashes by Month



2017 - Crashes by Day of Week

Day	All Crashes		Fatal Crashes		Injury Crashes			PDO Crashes
	Number	% of Total	Number	% of Fatal	A	B	C	Number
Monday	8,258	15.0	20	13.8	124	452	1,243	6,419
Tuesday	8,248	15.0	23	15.9	106	411	1,213	6,495
Wednesday	8,502	15.5	11	7.6	114	432	1,284	6,661
Thursday	8,444	15.4	18	12.4	120	422	1,256	6,628
Friday	8,922	16.2	23	15.9	130	471	1,355	6,943
Saturday	6,804	12.4	30	20.7	135	442	1,021	5,176
Sunday	5,742	10.5	20	13.8	123	400	909	4,290
<b>Total</b>	<b>54,920</b>	<b>100.0</b>	<b>145</b>	<b>100.0</b>	<b>852</b>	<b>3,030</b>	<b>8,281</b>	<b>42,612</b>

2017 Day of Week and Severity

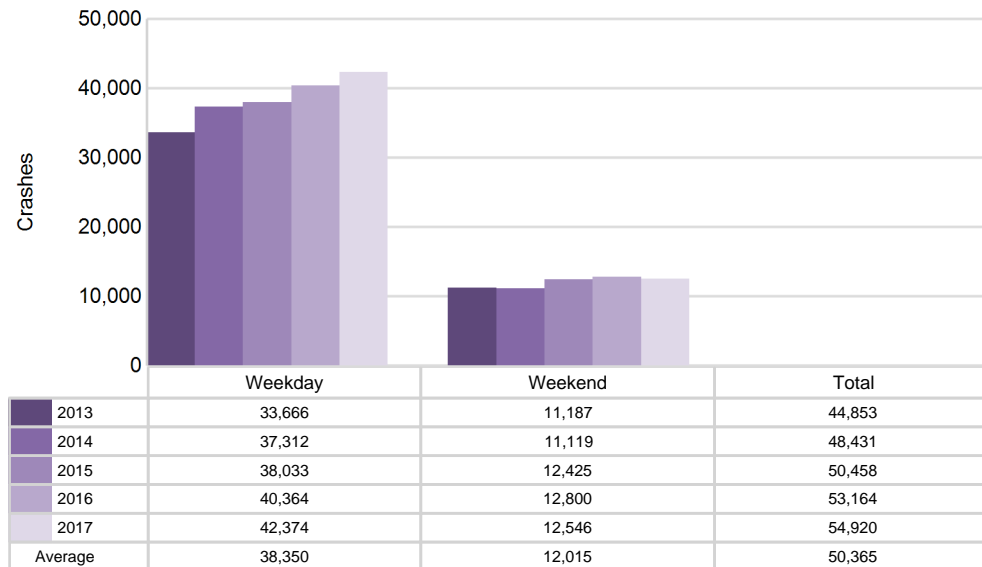


# Traffic Safety Network Wayne County (continued)

## 5-Year Trend - Crashes by Weekday and Weekend

Portion of Week	2013		2014		2015		2016		2017	
	Total Crashes	Fatal Crashes	Total Crashes	Fatal Crashes	Total Crashes	Fatal Crashes	Total Crashes	Fatal Crashes	Total Crashes	Fatal Crashes
Weekday	33,666	93	37,312	98	38,033	108	40,364	106	42,374	95
Weekend	11,187	58	11,119	57	12,425	66	12,800	77	12,546	50
<b>Total</b>	<b>44,853</b>	<b>151</b>	<b>48,431</b>	<b>155</b>	<b>50,458</b>	<b>174</b>	<b>53,164</b>	<b>183</b>	<b>54,920</b>	<b>145</b>

## 5-Year Crash Trends by Weekday (Monday - Friday) and Weekend (Saturday & Sunday)



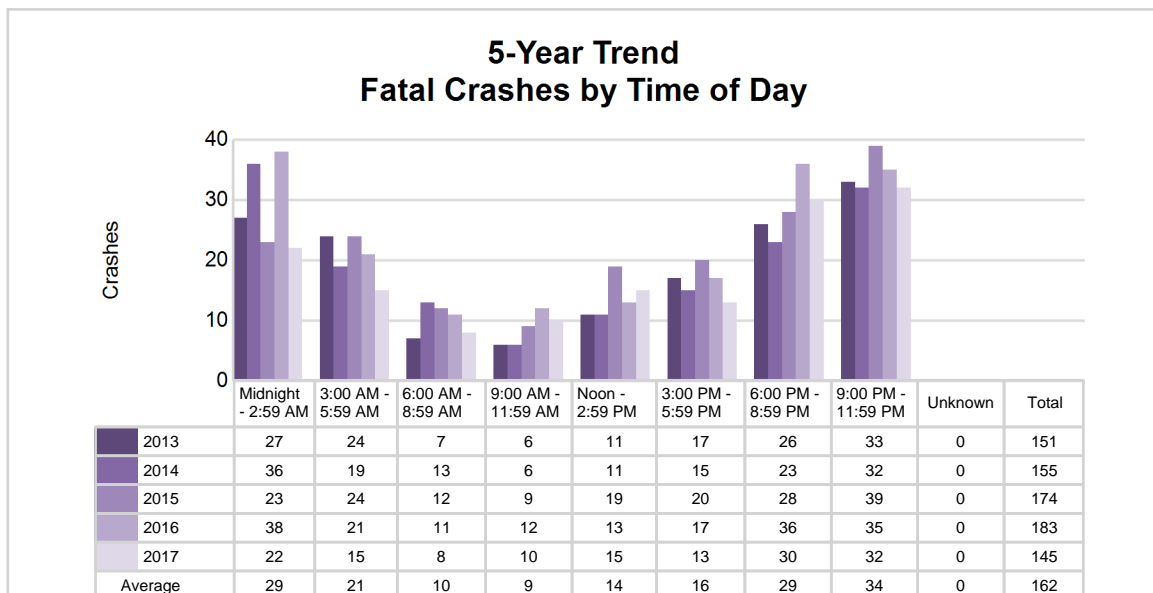
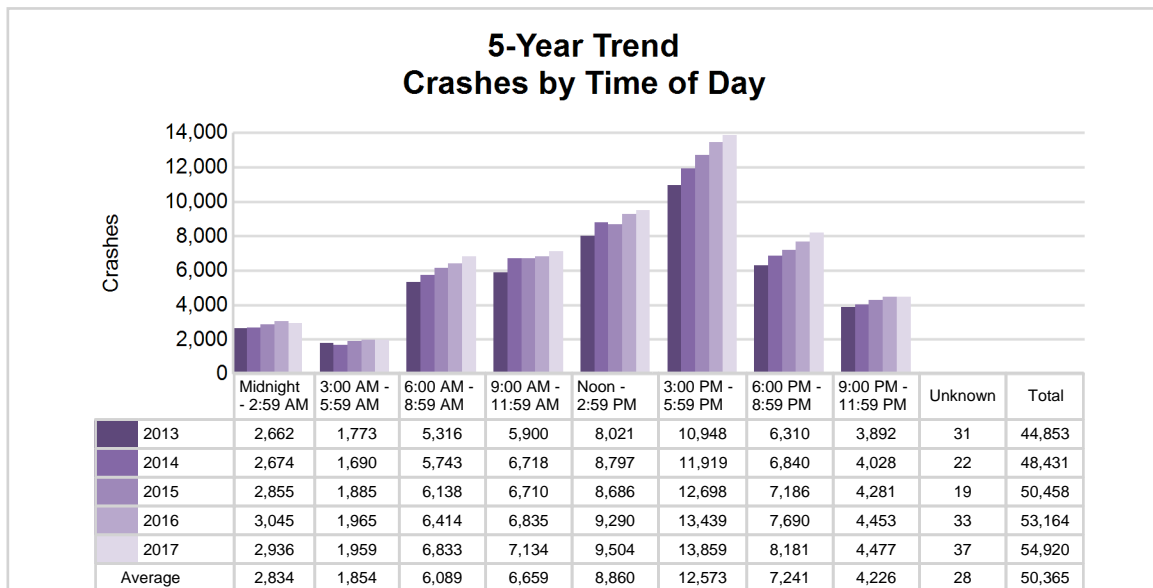
# Traffic Safety Network Wayne County (continued)

5

## 5-Year Trend - Crashes by Time of Day

Time of Day	2013		2014		2015		2016		2017	
	Total Crashes	Fatal Crashes	Total Crashes	Fatal Crashes	Total Crashes	Fatal Crashes	Total Crashes	Fatal Crashes	Total Crashes	Fatal Crashes
Midnight - 2:59 AM	2,662	27	2,674	36	2,855	23	3,045	38	2,936	22
3:00 AM - 5:59 AM	1,773	24	1,690	19	1,885	24	1,965	21	1,959	15
6:00 AM - 8:59 AM	5,316	7	5,743	13	6,138	12	6,414	11	6,833	8
9:00 AM - 11:59 AM	5,900	6	6,718	6	6,710	9	6,835	12	7,134	10
Noon - 2:59 PM	8,021	11	8,797	11	8,686	19	9,290	13	9,504	15
3:00 PM - 5:59 PM	10,948 †	17	11,919 †	15	12,698 †	20	13,439 †	17	13,859 †	13
6:00 PM - 8:59 PM	6,310	26	6,840	23	7,186	28	7,690	36	8,181	30
9:00 PM - 11:59 PM	3,892	33	4,028	32	4,281	39	4,453	35	4,477	32
Unknown	31	0	22	0	19	0	33	0	37	0
<b>Total</b>	<b>44,853</b>	<b>151</b>	<b>48,431</b>	<b>155</b>	<b>50,458</b>	<b>174</b>	<b>53,164</b>	<b>183</b>	<b>54,920</b>	<b>145</b>

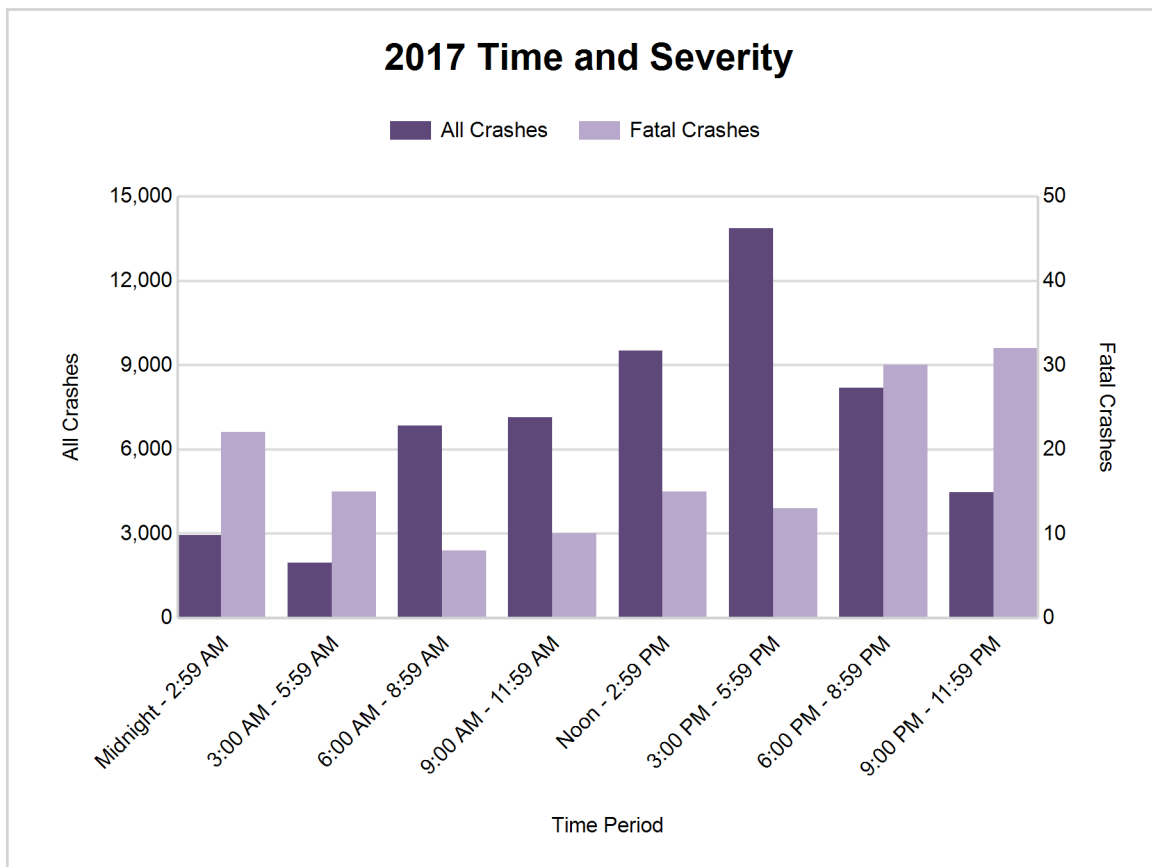
Note: † Indicates that the highest number of total crashes reported in the 5-year period occurred in the same time period



# Traffic Safety Network Wayne County (continued)

## 2017 - Time and Severity

Time of Day	All Crashes		Fatal Crashes		Injury Crashes			PDO Crashes
	Number	% of Total	Number	% of Fatal	A	B	C	Number
Midnight - 2:59 AM	2,936	5.3	22	15.2	101	238	471	2,104
3:00 AM - 5:59 AM	1,959	3.6	15	10.3	57	119	277	1,491
6:00 AM - 8:59 AM	6,833	12.4	8	5.5	68	314	955	5,488
9:00 AM - 11:59 AM	7,134	13.0	10	6.9	73	314	992	5,745
Noon - 2:59 PM	9,504	17.3	15	10.3	130	516	1,439	7,404
3:00 PM - 5:59 PM	13,859	25.2	13	9.0	161	691	2,176	10,818
6:00 PM - 8:59 PM	8,181	14.9	30	20.7	141	525	1,248	6,237
9:00 PM - 11:59 PM	4,477	8.2	32	22.1	121	313	721	3,290
Unknown	37	0.1	0	0.0	0	0	2	35
<b>Total</b>	<b>54,920</b>	<b>100.0</b>	<b>145</b>	<b>100.0</b>	<b>852</b>	<b>3,030</b>	<b>8,281</b>	<b>42,612</b>





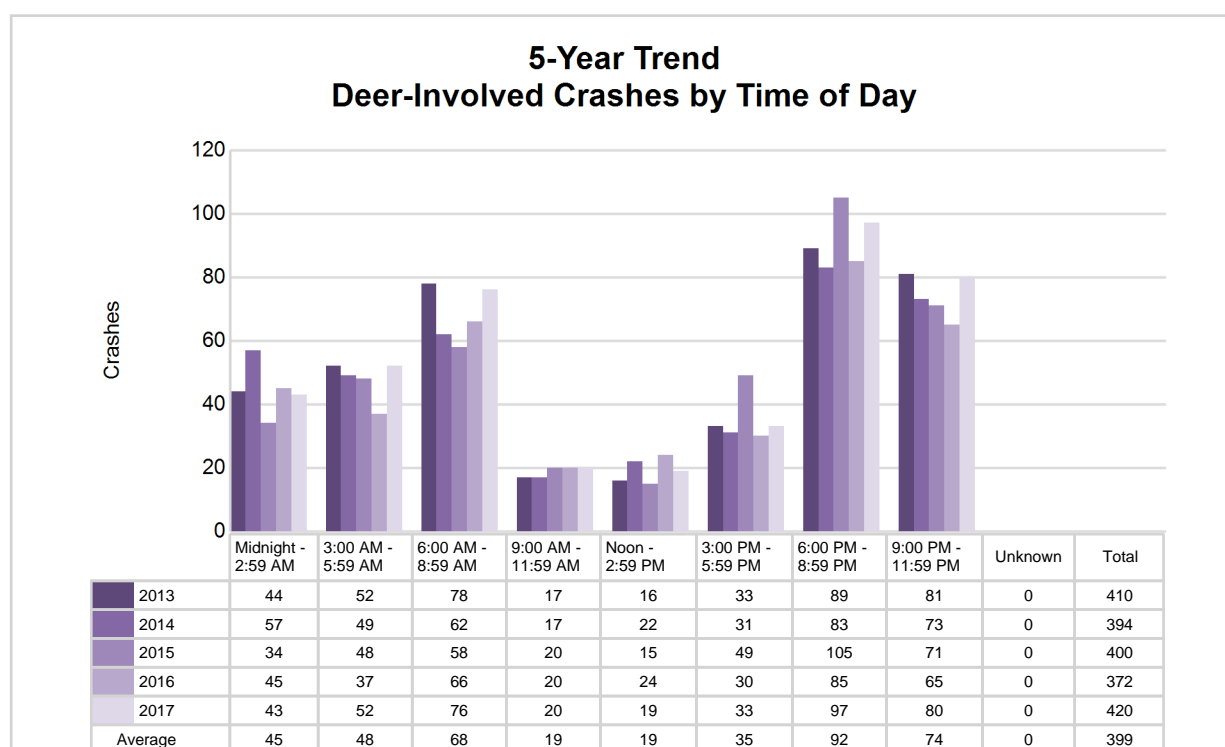
# Traffic Safety Network Wayne County (continued)

7

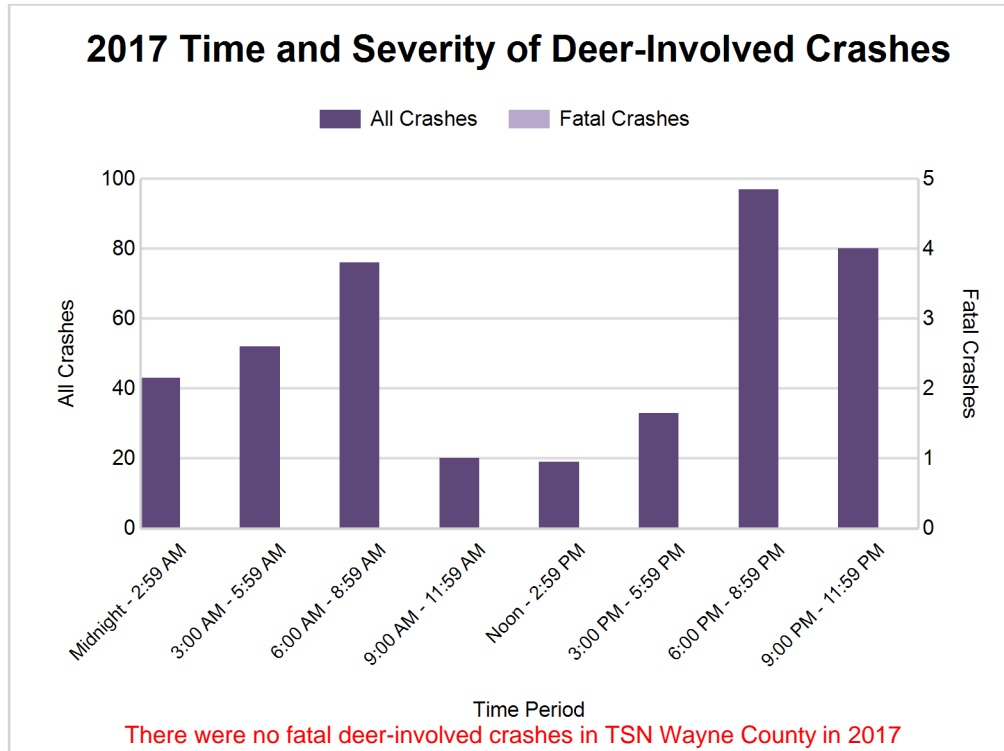
## 5-Year Trend - Deer-Involved Crashes by Time of Day

Time of Day	2013		2014		2015		2016		2017	
	Total Crashes	Fatal Crashes	Total Crashes	Fatal Crashes	Total Crashes	Fatal Crashes	Total Crashes	Fatal Crashes	Total Crashes	Fatal Crashes
Midnight - 2:59 AM	44	0	57	0	34	0	45	0	43	0
3:00 AM - 5:59 AM	52	0	49	0	48	0	37	0	52	0
6:00 AM - 8:59 AM	78	0	62	0	58	0	66	0	76	0
9:00 AM - 11:59 AM	17	0	17	0	20	0	20	0	20	0
Noon - 2:59 PM	16	0	22	0	15	0	24	0	19	0
3:00 PM - 5:59 PM	33	0	31	0	49	0	30	0	33	0
6:00 PM - 8:59 PM	89 †	0	83 †	0	105 †	0	85 †	0	97 †	0
9:00 PM - 11:59 PM	81	1	73	0	71	0	65	0	80	0
Unknown	0	0	0	0	0	0	0	0	0	0
<b>Total</b>	<b>410</b>	<b>1</b>	<b>394</b>	<b>0</b>	<b>400</b>	<b>0</b>	<b>372</b>	<b>0</b>	<b>420</b>	<b>0</b>

Note: † Indicates that the highest number of total crashes reported in the 5-year period occurred in the same time period



## Traffic Safety Network Wayne County (continued)



### 2017 - Reported Motor Vehicle Crashes by County

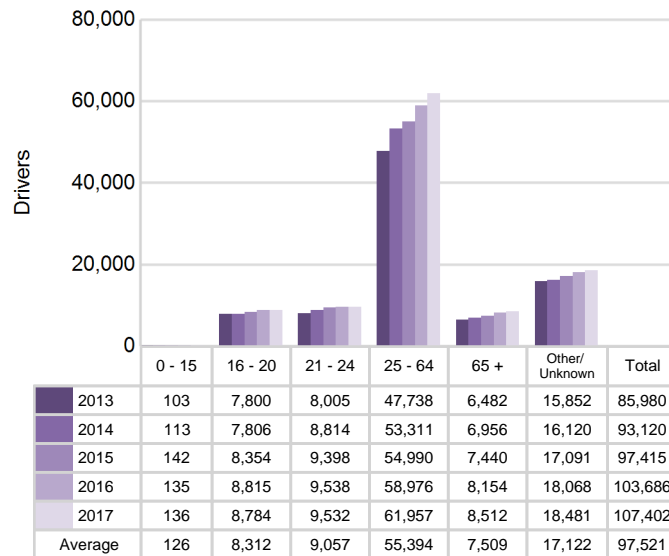
County	Crashes											Persons	
	Total	Fatal	Injury	Property Damage	Inter-state	US Route	State Route	Local Street	Alcohol-Involved	Drug-Involved	Deer-Involved	Fatalities	Injuries
Wayne	54,920	145	12,163	42,612	9,233	3,708	10,311	31,605	1,315	417	420	159	16,988
<b>Total</b>	<b>54,920</b>	<b>145</b>	<b>12,163</b>	<b>42,612</b>	<b>9,233</b>	<b>3,708</b>	<b>10,311</b>	<b>31,605</b>	<b>1,315</b>	<b>417</b>	<b>420</b>	<b>159</b>	<b>16,988</b>

# Traffic Safety Network Wayne County (continued)

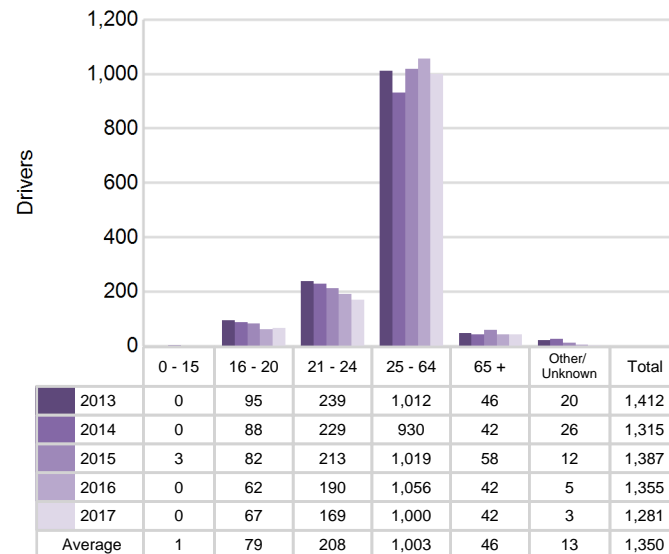
## 5-Year Trend - Drivers in Crashes Coded Drinking by Driver Age

Driver Age	2013		2014		2015		2016		2017	
	Total Drivers in Crashes	Total Drivers Coded Drinking	Total Drivers in Crashes	Total Drivers Coded Drinking	Total Drivers in Crashes	Total Drivers Coded Drinking	Total Drivers in Crashes	Total Drivers Coded Drinking	Total Drivers in Crashes	Total Drivers Coded Drinking
0 - 15	103	0	113	0	142	3	135	0	136	0
16 - 20	7,800	95	7,806	88	8,354	82	8,815	62	8,784	67
21 - 24	8,005	239	8,814	229	9,398	213	9,538	190	9,532	169
25 - 64	47,738	1,012	53,311	930	54,990	1,019	58,976	1,056	61,957	1,000
65 +	6,482	46	6,956	42	7,440	58	8,154	42	8,512	42
Unknown	15,852	20	16,120	26	17,091	12	18,068	5	18,481	3
<b>Total</b>	<b>85,980</b>	<b>1,412</b>	<b>93,120</b>	<b>1,315</b>	<b>97,415</b>	<b>1,387</b>	<b>103,686</b>	<b>1,355</b>	<b>107,402</b>	<b>1,281</b>

**5-Year Trend  
Total Drivers in Crashes by Age**



**5-Year Trend  
Total Drivers Coded Drinking by Age**



# Traffic Safety Network Wayne County (continued)

## 2017 - Bodily Alcohol Concentration (BAC) Results Among All Vehicle Drivers in Alcohol-Involved Crashes by Age

Age Group	Drivers				BAC Result Range for Drivers Coded Drinking				
	Total Drivers in Alcohol-Involved Crashes	Total Drivers Tested in all Crashes	Total Drivers Coded Drinking, Tested	Total Drivers Coded Drinking	BAC = 0.00	BAC 0.01 g/dL to 0.07 g/dL	BAC 0.08 g/dL to 0.16 g/dL	BAC 0.17 g/dL and Above	BAC Not Reported
0 - 15	1	0	0	0	0	0	0	0	0
16 - 20	123	66	56	67	1	3	18	8	37
21 - 24	247	160	140	169	2	13	41	47	66
25 - 64	1,506	918	816	1,000	12	50	172	315	451
65 +	90	48	37	42	0	3	9	11	19
Unknown	350	1	1	3	0	0	0	0	3
<b>Total</b>	<b>2,317</b>	<b>1,193</b>	<b>1,050</b>	<b>1,281</b>	<b>15</b>	<b>69</b>	<b>240</b>	<b>381</b>	<b>576</b>

Notes: BAC measured in grams (g) per deciliter (dL).

BAC may not be reported if drivers are not tested or if the results are not available immediately (as in the case of a blood test).

A driver may be coded by the officer as drinking even though no test is administered.

## Alcohol-Involved Crashes

In 2017, there were 2,317 drivers in alcohol-involved crashes; 1,281 (55.3%) of those drivers were coded as had-been-drinking by the officer on the crash form.

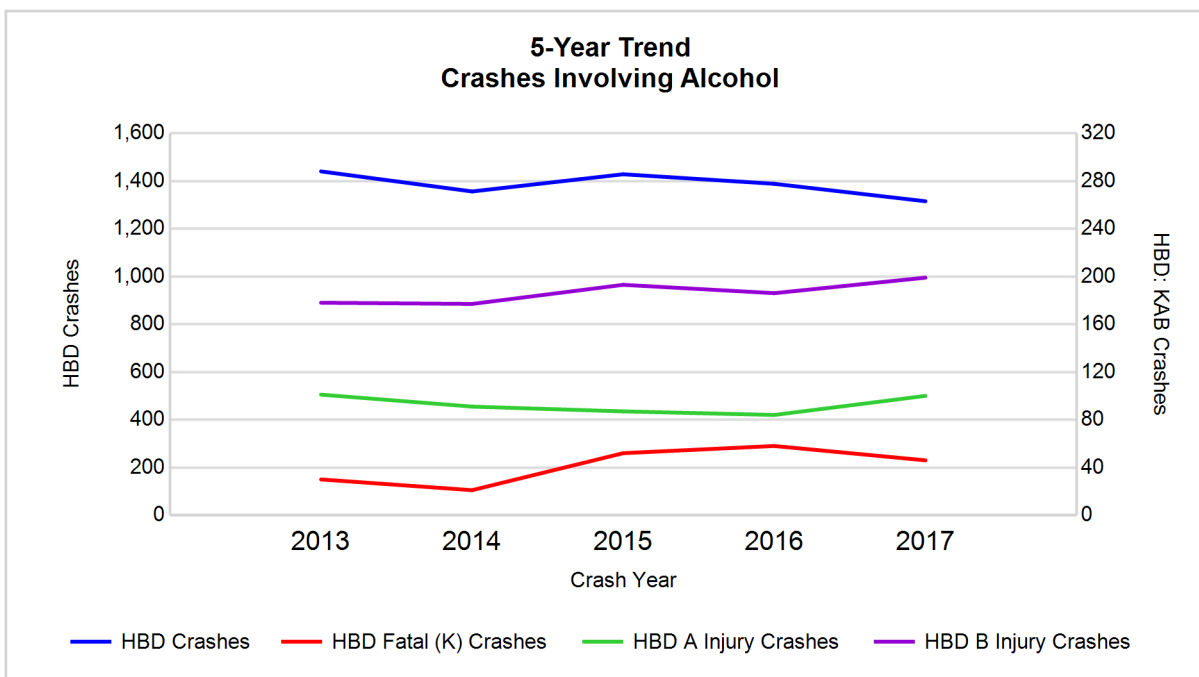
- 621 (48.5%) of the 1,281 drivers had a blood alcohol concentration (BAC) of 0.08 g/dL (grams per deciliter) or greater, and 381 (61.4%) of the 621 drivers had a BAC at or above 0.17 g/dL.
- 1,050 (82.0%) of the 1,281 drivers were coded as had-been-drinking and were tested for alcohol consumption.

## 5-Year Trend - Crashes Involving Alcohol

Year	All Crashes	HBD Crashes	% HBD	Fatal Crashes	HBD Fatal Crashes	% HBD	A Injury Crashes	HBD A Injury Crashes	% HBD	B Injury Crashes	HBD B Injury Crashes	% HBD
2013	44,853	1,440	3.2	151	30	19.9	724	101	14.0	2,260	178	7.9
2014	48,431	1,356	2.8	155	21	13.5	696	91	13.1	2,207	177	8.0
2015	50,458	1,428	2.8	174	52	29.9	664	87	13.1	2,459	193	7.8
2016	53,164	1,388	2.6	183	58	31.7	730	84	11.5	2,772	186	6.7
2017	54,920**	1,315*	2.4*	145*	46	31.7	852**	100	11.7	3,030**	199**	6.6*

Note: \* Indicates that the most recent year is the lowest number or percentage reported in the 5-year period in that column

\*\* Indicates that the most recent year is the highest number or percentage reported in the 5-year period in that column



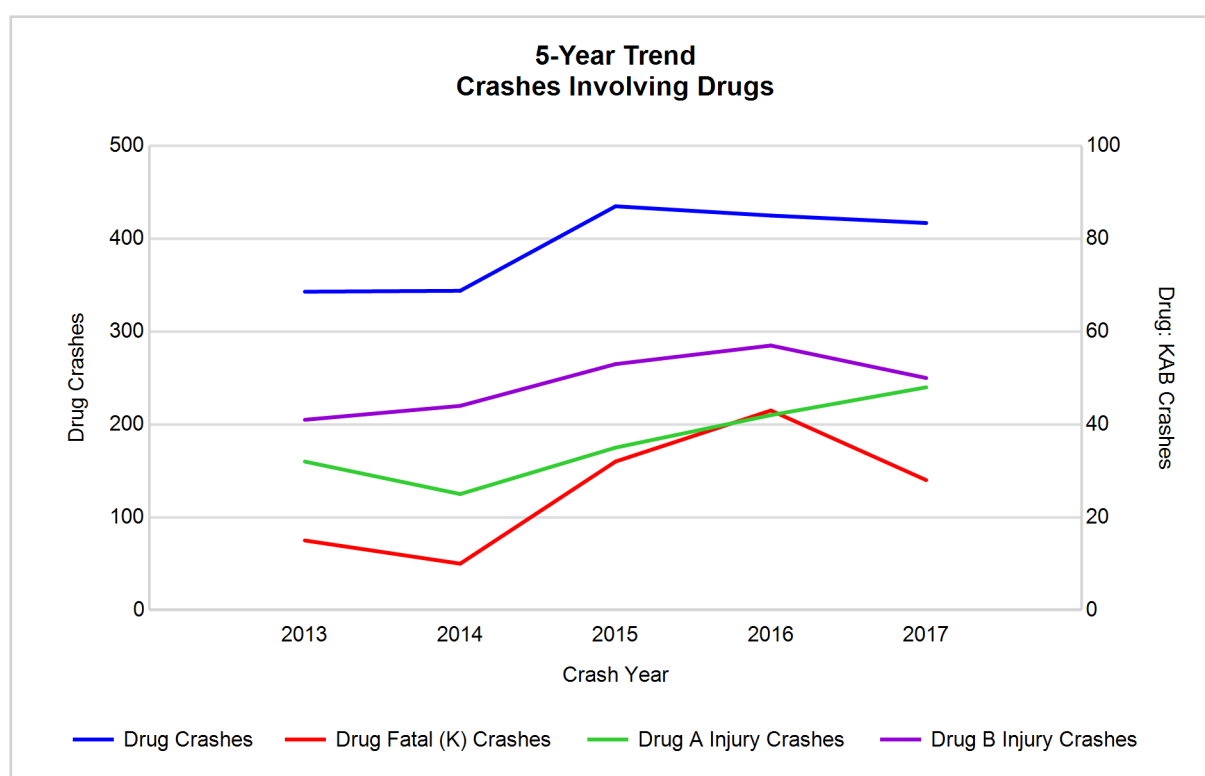
Note: Had-Been-Drinking (HBD)

## 5-Year Trend - Crashes Involving Drugs

Year	All Crashes	Drug Crashes	% Drug	Fatal Crashes	Drug Fatal Crashes	% Drug	A Injury Crashes	Drug A Injury Crashes	% Drug	B Injury Crashes	Drug B Injury Crashes	% Drug
2013	44,853	343	0.8	151	15	9.9	724	32	4.4	2,260	41	1.8
2014	48,431	344	0.7	155	10	6.5	696	25	3.6	2,207	44	2.0
2015	50,458	435	0.9	174	32	18.4	664	35	5.3	2,459	53	2.2
2016	53,164	425	0.8	183	43	23.5	730	42	5.8	2,772	57	2.1
2017	54,920**	417	0.8	145*	28	19.3	852**	48**	5.6	3,030**	50	1.7*

Note: \* Indicates that the most recent year is the lowest number or percentage reported in the 5-year period in that column

\*\* Indicates that the most recent year is the highest number or percentage reported in the 5-year period in that column



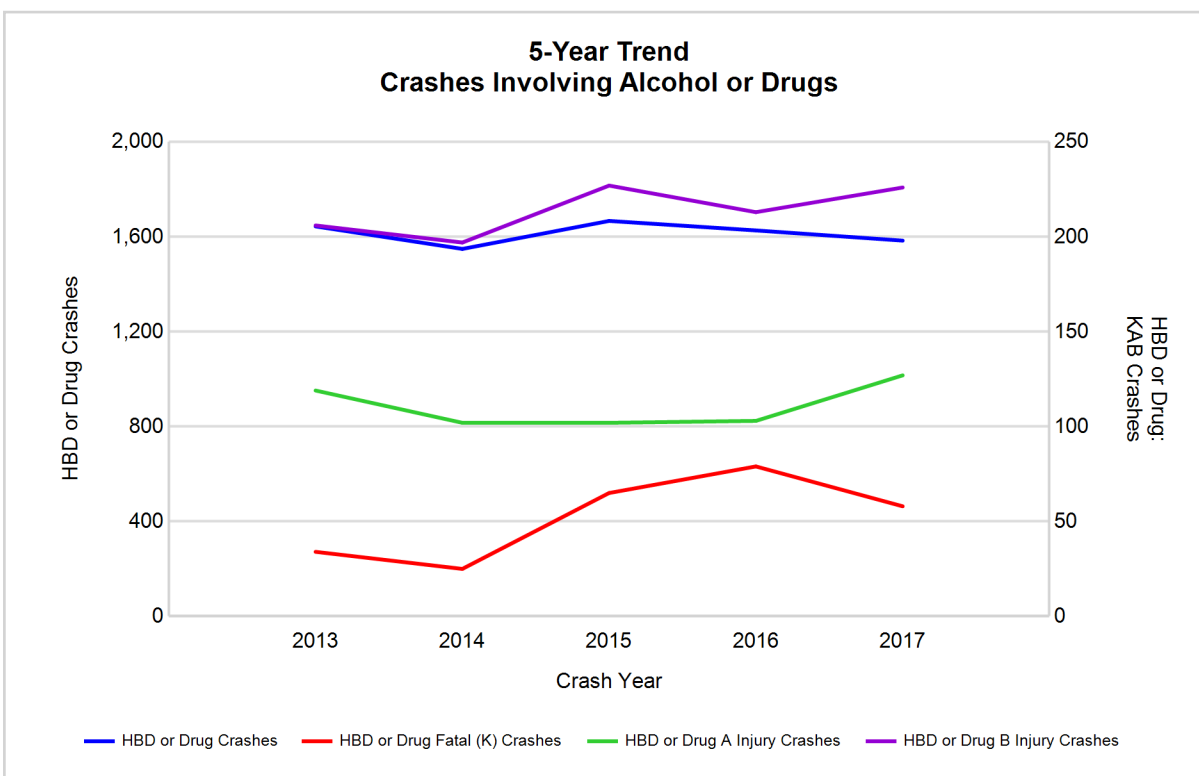
# Traffic Safety Network Wayne County (continued)

## 5-Year Trend - Crashes Involving Alcohol or Drugs

Year	All Crashes	HBD or Drug Crashes	% HBD or Drug	Fatal Crashes	HBD or Drug Fatal Crashes	% HBD or Drug	A Injury Crashes	HBD or Drug A Injury Crashes	% HBD or Drug	B Injury Crashes	HBD or Drug B Injury Crashes	% HBD or Drug
2013	44,853	1,644	3.7	151	34	22.5	724	119	16.4	2,260	206	9.1
2014	48,431	1,549	3.2	155	25	16.1	696	102	14.7	2,207	197	8.9
2015	50,458	1,667	3.3	174	65	37.4	664	102	15.4	2,459	227	9.2
2016	53,164	1,627	3.1	183	79	43.2	730	103	14.1	2,772	213	7.7
2017	54,920**	1,584	2.9*	145*	58	40.0	852**	127**	14.9	3,030**	226	7.5*

Note: \* Indicates that the most recent year is the lowest number or percentage reported in the 5-year period in that column

\*\* Indicates that the most recent year is the highest number or percentage reported in the 5-year period in that column



Note: Had-Been-Drinking (HBD)

# Traffic Safety Network Wayne County (continued)

13

## 2017 - Restraints Worn Among Vehicle Drivers and Injured Passengers by Vehicle Type

Vehicle Type	Total Occupants			Fatalities			A - Suspected Serious			B - Suspected Minor			C - Possible Injury			No Injury		
	Total	Used Restraint	%	Total	Used Restraint	%	Total	Used Restraint	%	Total	Used Restraint	%	Total	Used Restraint	%	Total	Used Restraint	%
Passenger car, SUV, van	95,042	72,579	76.4	95	36	37.9	683	458	67.1	3,009	2,534	84.2	10,977	9,480	86.4	67,006	60,037	89.6
Motor home	336	268	79.8	1	1	100.0	3	3	100.0	9	7	77.8	32	30	93.8	252	227	90.1
Pickup truck	7,097	5,675	80.0	3	1	33.3	34	27	79.4	184	168	91.3	484	440	90.9	5,457	5,037	92.3
Small truck under 10,000 lbs. GVWR	740	525	70.9	0	0	0.0	2	1	50.0	6	6	100.0	48	38	79.2	559	480	85.9
Motorcycle	479	296	61.8	17	8	47.1	89	53	59.6	146	98	67.1	89	59	66.3	119	78	65.5
Moped / goped	82	16	19.5	0	0	0.0	16	3	18.8	29	11	37.9	23	0	0.0	5	2	40.0
Go-cart / golf cart	12	2	16.7	1	0	0.0	0	0	0.0	3	0	0.0	0	0	0.0	5	2	40.0
Snowmobile	2	0	0.0	0	0	0.0	0	0	0.0	0	0	0.0	0	0	0.0	1	0	0.0
Off-Road Vehicle - ORV / All-Terrain Vehicle - ATV	23	3	13.0	3	0	0.0	1	0	0.0	3	0	0.0	5	0	0.0	6	3	50.0
Other	584	317	54.3	0	0	0.0	5	2	40.0	11	6	54.5	29	11	37.9	392	298	76.0
Truck/bus over 10,000 lbs.	3,234	2,719	84.1	1	1	100.0	9	5	55.6	39	23	59.0	139	64	46.0	2,849	2,626	92.2
Unknown	4,366	19	0.4	0	0	0.0	0	0	0.0	2	2	100.0	3	3	100.0	64	13	20.3
<b>Total</b>	<b>111,997</b>	<b>82,419</b>	<b>73.6</b>	<b>121</b>	<b>47</b>	<b>38.8</b>	<b>842</b>	<b>552</b>	<b>65.6</b>	<b>3,441</b>	<b>2,855</b>	<b>83.0</b>	<b>11,829</b>	<b>10,125</b>	<b>85.6</b>	<b>76,715</b>	<b>68,803</b>	<b>89.7</b>

Note: Restraint Use includes shoulder belt only used, lap belt only used, both lap and shoulder belts used, child restraint used, restraint failure, and helmet worn.

## 2017 - Restraints Worn Among Vehicle Drivers and Injured Passengers by Age

Age Group	Total Occupants			Fatalities			A - Suspected Serious			B - Suspected Minor			C - Possible Injury			No Injury		
	Total	Used Restraint	%	Total	Used Restraint	%	Total	Used Restraint	%	Total	Used Restraint	%	Total	Used Restraint	%	Total	Used Restraint	%
0 - 15	1,190	948	79.7	6	4	66.7	34	22	64.7	176	140	79.5	866	714	82.4	103	68	66.0
16 - 20	9,451	8,441	89.3	11	3	27.3	90	53	58.9	417	331	79.4	1,240	1,053	84.9	7,592	7,000	92.2
21 - 24	10,001	8,688	86.9	17	3	17.6	110	73	66.4	417	330	79.1	1,234	1,032	83.6	8,086	7,247	89.6
25 - 64	64,025	56,293	87.9	74	31	41.9	539	344	63.8	2,126	1,778	83.6	7,428	6,377	85.9	53,012	47,741	90.1
65 +	8,837	8,002	90.6	13	6	46.2	68	60	88.2	302	274	90.7	1,046	944	90.2	7,316	6,712	91.7
Unknown	18,493	47	0.3	0	0	0.0	1	0	0.0	3	2	66.7	15	5	33.3	606	35	5.8
<b>Total</b>	<b>111,997</b>	<b>82,419</b>	<b>73.6</b>	<b>121</b>	<b>47</b>	<b>38.8</b>	<b>842</b>	<b>552</b>	<b>65.6</b>	<b>3,441</b>	<b>2,855</b>	<b>83.0</b>	<b>11,829</b>	<b>10,125</b>	<b>85.6</b>	<b>76,715</b>	<b>68,803</b>	<b>89.7</b>

Note: Restraint Use includes shoulder belt only used, lap belt only used, both lap and shoulder belts used, child restraint used, restraint failure, and helmet worn.

# Traffic Safety Network Wayne County (continued)

## 5-Year Trend - Restraint Use Among Drivers

Restraint Use	2013			2014			2015			2016			2017		
	Drivers	Fatal Drivers	Injured Drivers	Drivers	Fatal Drivers	Injured Drivers	Drivers	Fatal Drivers	Injured Drivers	Drivers	Fatal Drivers	Injured Drivers	Drivers	Fatal Drivers	Injured Drivers
No belts available	371	2	62	353	1	50	406	1	61	243	0	33	166	0	27
Shoulder belt only used	176	0	20	210	0	38	293	0	31	591	1	75	680	1	87
Lap belt only used	240	0	18	253	1	29	290	0	30	196	0	21	165	1	15
Both lap & shoulder belts used	63,302	21	7,669	69,740	21	7,957	72,178	28	8,654	76,661	25	9,605	77,677	26	9,655
No belts used	835	13	236	751	20	203	782	14	237	737	28	236	610	13	222
Child restraint used	10	0	1	2	0	0	10	0	1	8	0	0	7	0	0
Child restraint not used, unavailable or improper use	7	0	0	6	0	0	8	0	1	2	0	0	0	0	0
Restraint failure	31	0	3	28	0	3	35	0	4	31	0	8	23	0	8
Restraint use unknown	10,728	17	642	11,161	15	783	12,034	14	972	18,847	29	919	25,004	30	1,164
Helmet worn	297	10	200	272	6	189	306	19	198	326	9	232	297	7	209
Helmet not worn	152	9	100	160	4	125	171	8	121	330	10	166	164	8	125
Helmet use unknown	54	4	13	82	1	30	95	3	31	70	3	24	56	4	36
Uncoded & errors	9,777	0	18	10,102	0	34	10,807	0	15	5,644	0	16	2,553	0	0
<b>Total</b>	<b>85,980</b>	<b>76</b>	<b>8,982</b>	<b>93,120</b>	<b>69</b>	<b>9,441</b>	<b>97,415</b>	<b>87</b>	<b>10,356</b>	<b>103,686</b>	<b>105</b>	<b>11,335</b>	<b>107,402</b>	<b>90</b>	<b>11,548</b>

## 5-Year Trend - Restraint Use Among Drivers Coded Drinking

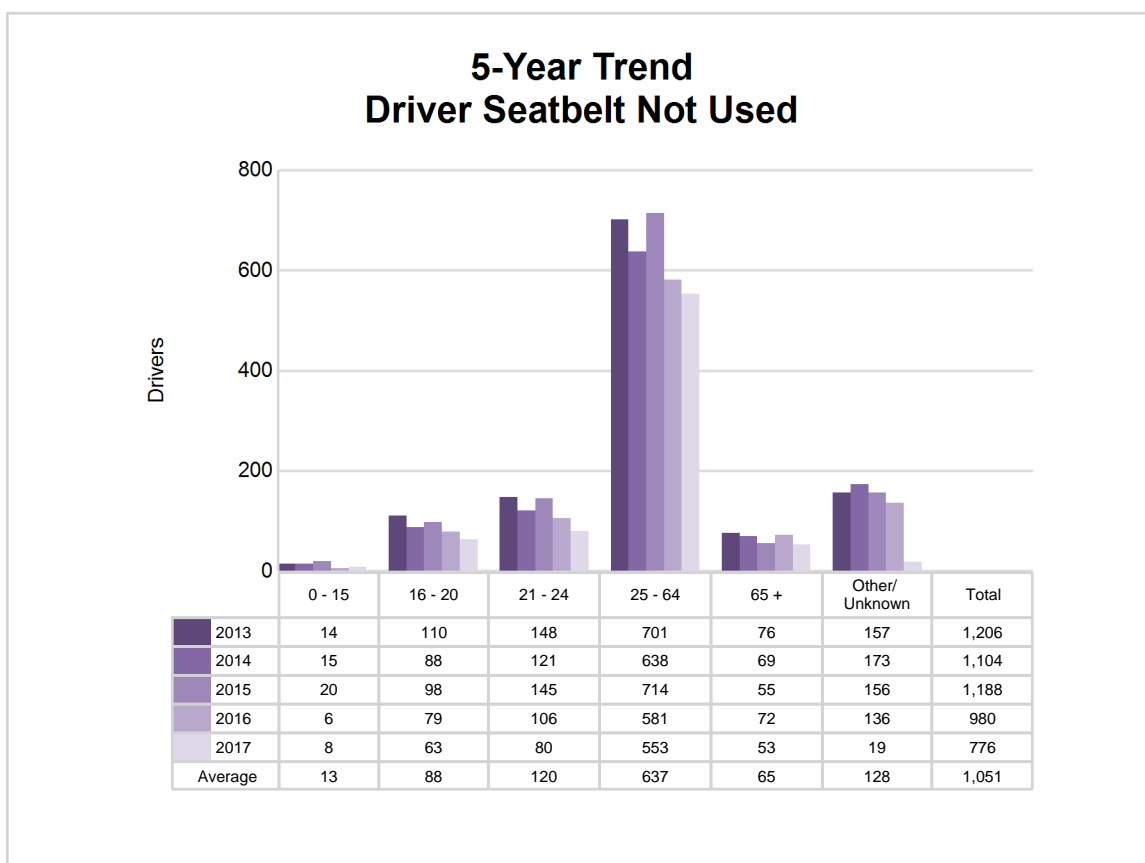
Restraint Use	2013			2014			2015			2016			2017		
	Drivers	Fatal Drivers	Injured Drivers	Drivers	Fatal Drivers	Injured Drivers	Drivers	Fatal Drivers	Injured Drivers	Drivers	Fatal Drivers	Injured Drivers	Drivers	Fatal Drivers	Injured Drivers
No belts available	5	0	2	7	0	1	5	0	2	8	0	3	4	0	0
Shoulder belt only used	6	0	1	6	0	1	6	0	1	11	0	2	6	0	2
Lap belt only used	3	0	1	6	0	2	5	0	2	1	0	0	1	0	0
Both lap & shoulder belts used	1,024	4	233	930	3	189	990	3	229	968	1	239	891	7	220
No belts used	94	2	50	83	1	52	84	6	46	82	13	40	60	3	31
Child restraint used	0	0	0	0	0	0	0	0	0	0	0	0	1	0	0
Child restraint not used, unavailable or improper use	0	0	0	0	0	0	0	0	0	0	0	0	0	0	0
Restraint failure	0	0	0	0	0	0	0	0	0	0	0	0	0	0	0
Restraint use unknown	249	1	72	245	0	66	271	4	74	260	8	69	297	10	91
Helmet worn	7	2	3	7	1	6	9	0	8	4	0	4	8	0	8
Helmet not worn	11	1	6	22	0	22	15	5	8	19	2	14	9	1	8
Helmet use unknown	1	0	0	2	0	1	0	0	0	0	0	0	2	0	0
Uncoded & errors	12	0	1	7	0	1	2	0	0	2	0	0	2	0	0
<b>Total</b>	<b>1,412</b>	<b>10</b>	<b>369</b>	<b>1,315</b>	<b>5</b>	<b>341</b>	<b>1,387</b>	<b>18</b>	<b>370</b>	<b>1,355</b>	<b>24</b>	<b>371</b>	<b>1,281</b>	<b>21</b>	<b>360</b>



## 5-Year Trend - Seatbelt Not Used Among Drivers by Age

Age Group	2013			2014			2015			2016			2017		
	Drivers	Fatal Drivers	Injured Drivers	Drivers	Fatal Drivers	Injured Drivers	Drivers	Fatal Drivers	Injured Drivers	Drivers	Fatal Drivers	Injured Drivers	Drivers	Fatal Drivers	Injured Drivers
0 - 15	14	0	0	15	0	3	20	0	5	6	0	0	8	0	1
16 - 20	110	1	42	88	4	23	98	0	45	79	1	34	63	2	25
21 - 24	148	0	58	121	4	41	145	2	44	106	2	35	80	3	28
25 - 64	701	12	173	638	11	165	714	11	189	581	22	185	553	7	183
65 +	76	2	19	69	2	11	55	2	11	72	3	13	53	1	12
Unknown	157	0	6	173	0	10	156	0	4	136	0	2	19	0	0
<b>Total</b>	<b>1,206</b>	<b>15</b>	<b>298</b>	<b>1,104</b>	<b>21</b>	<b>253</b>	<b>1,188</b>	<b>15</b>	<b>298</b>	<b>980</b>	<b>28</b>	<b>269</b>	<b>776</b>	<b>13</b>	<b>249</b>

Note: Seatbelt Not Used includes no belts available or no belts used.



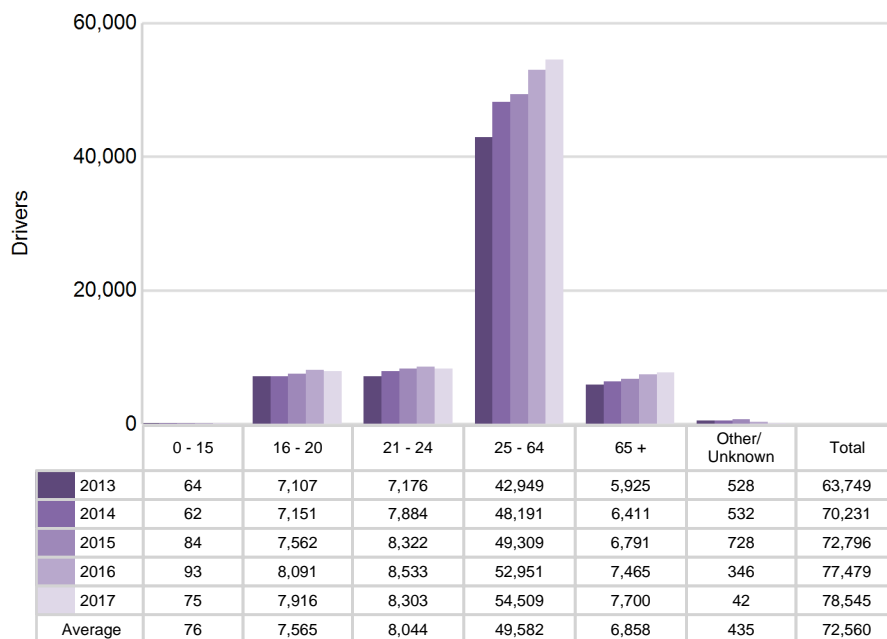
# Traffic Safety Network Wayne County (continued)

## 5-Year Trend - Seatbelt Used Among Drivers by Age

Age Group	2013			2014			2015			2016			2017		
	Drivers	Fatal Drivers	Injured Drivers	Drivers	Fatal Drivers	Injured Drivers	Drivers	Fatal Drivers	Injured Drivers	Drivers	Fatal Drivers	Injured Drivers	Drivers	Fatal Drivers	Injured Drivers
0 - 15	64	0	1	62	0	5	84	0	7	93	1	9	75	0	7
16 - 20	7,107	3	802	7,151	1	807	7,562	3	840	8,091	2	956	7,916	3	920
21 - 24	7,176	1	1,006	7,884	2	972	8,322	4	1,013	8,533	2	1,121	8,303	0	1,066
25 - 64	42,949	10	5,159	48,191	15	5,462	49,309	15	5,981	52,951	14	6,622	54,509	20	6,787
65 +	5,925	7	728	6,411	4	769	6,791	6	871	7,465	7	995	7,700	5	983
Unknown	528	0	14	532	0	12	728	0	7	346	0	6	42	0	2
<b>Total</b>	<b>63,749</b>	<b>21</b>	<b>7,710</b>	<b>70,231</b>	<b>22</b>	<b>8,027</b>	<b>72,796</b>	<b>28</b>	<b>8,719</b>	<b>77,479</b>	<b>26</b>	<b>9,709</b>	<b>78,545</b>	<b>28</b>	<b>9,765</b>

Note: Seatbelt Used includes shoulder belt only used, lap belt only used, both lap and shoulder belts used, and restraint failure.

## 5-Year Trend Driver Seatbelt Used



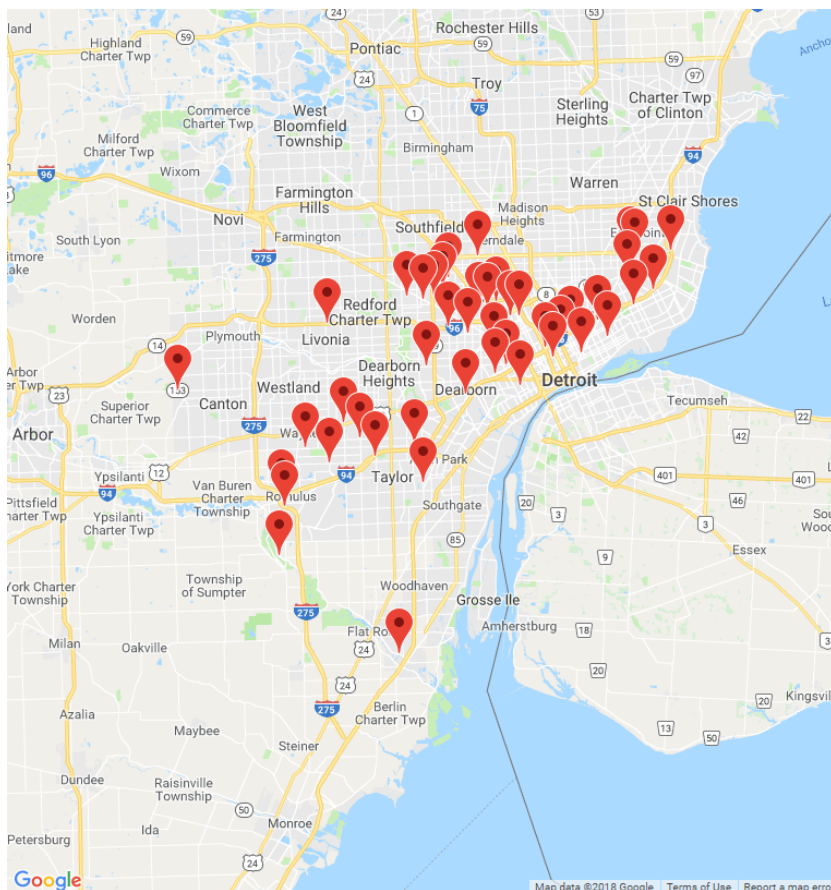
# Traffic Safety Network Wayne County (continued)

17

## 5-Year Trend - Drivers in Crashes by Hazardous Action

Hazardous Action	2013		2014		2015		2016		2017	
	Total Drivers in Crashes	Drivers in Fatal Crashes	Total Drivers in Crashes	Drivers in Fatal Crashes	Total Drivers in Crashes	Drivers in Fatal Crashes	Total Drivers in Crashes	Drivers in Fatal Crashes	Total Drivers in Crashes	Drivers in Fatal Crashes
None	41,712	98	44,609	84	47,113	102	47,920	124	48,083	96
Speed too fast	3,877	25	4,960	27	4,258	31	4,062	42	3,986	31
Speed too slow	67	0	54	1	67	2	57	1	30	0
Failed to yield	6,733	10	7,214	5	7,471	13	7,785	12	8,036	5
Disregard traffic control	2,451	9	2,421	7	2,688	14	2,841	10	2,874	8
Drove wrong way	131	0	154	2	178	0	144	1	132	4
Drove left of center	437	3	436	5	395	3	399	10	413	5
Improper passing	516	0	603	0	690	1	695	3	785	3
Improper lane use	2,532	3	2,763	2	3,243	4	3,544	3	3,833	3
Improper turn	1,005	1	1,067	0	1,245	4	1,216	1	1,334	2
Improper/no signal	100	0	128	0	143	0	98	0	77	0
Improper backing	1,492	0	1,564	1	1,568	1	1,468	0	1,460	0
Unable to stop in assured clear distance	11,422	9	13,237	8	13,707	13	14,916	5	14,933	5
Other	3,342	12	3,340	19	3,490	16	3,628	18	3,430	15
Unknown	5,444	38	5,860	44	5,935	38	9,496	24	13,569	33
Reckless driving	590	13	646	15	764	19	803	23	601	22
Careless/negligent driving	2,036	10	2,040	11	2,385	18	2,433	18	1,765	13
Uncoded & errors	2,093	4	2,024	1	2,075	1	2,181	2	2,061	6
<b>Total</b>	<b>85,980</b>	<b>235</b>	<b>93,120</b>	<b>232</b>	<b>97,415</b>	<b>280</b>	<b>103,686</b>	<b>297</b>	<b>107,402</b>	<b>251</b>

## Traffic Safety Network Wayne County (continued)



The picture above represents all 2017 alcohol-involved fatal crashes in TSN Wayne County.

In 2017, there were 1,315 alcohol-involved crashes in TSN Wayne County:

46	K - Fatal Crashes
100	A - Suspected Serious Injury Crashes
199	B - Suspected Minor Injury Crashes
227	C - Possible Injury Crashes
743	O - Property Damage Only/No Injury Crashes

### Office of Highway Safety Planning

---

Physical Address:  
7150 Harris Drive  
Dimondale, Michigan 48821

Mailing Address:  
P.O. Box 30634  
Lansing, Michigan 48909

Phone: (517) 284-3112  
Fax: (517) 284-3151

Find us on the web:  
[MichiganTrafficCrashFacts.org](http://MichiganTrafficCrashFacts.org)

